

República Argentina

**MARINE FISHERIES  
INDICATORS**

October 2009

Ministry of Agriculture, Livestock and Fisheries  
Secretariat of Agriculture, Livestock and Fisheries  
Undersecretariat of Fisheries and Aquaculture  
National Department of Fisheries Planning  
Department of Fisheries Economy  
Department of Fisheries Management

# LANDINGS

## Total Landings of Main Species:

Species	October 2009 t	Rate variation compared to the same period of the previous year (%)	Accrued in 2009 (until 10/31/09) t	Rate variation compared to the same period of the previous year (%)
Pink cuskeel ( <i>Genypterus blacodes</i> )	1.275,2	8,0%	14.462,0	-6,6%
Red porgy ( <i>Sparus pagrus</i> )	3.756,9	-57,0%	14.823,8	-31,7%
Chub mackerel ( <i>Scomber japonicus</i> )	274,0	-72,9%	4.761,8	-3,1%
Tope shark ( <i>Galeorhinus galeus</i> )	920,4	-65,3%	6.585,6	-47,3%
White croaker ( <i>Micropogonias furnieri</i> )	10,5	191,7%	111,8	54,6%
Patagonian smoothhound ( <i>Mustelus schmitti</i> )	704,8	-19,5%	21.634,1	6,4%
Flounder ( <i>Paralichthys patagonicus</i> )	413,6	-50,8%	7.279,6	-21,1%
Longtail hake ( <i>Macruronus magellanicus</i> )	202,5	-74,3%	4.879,9	-26,2%
Argentine hake ( <i>Merluccius hubbsi</i> )	3.800,9	-33,7%	76.609,1	-13,4%
Patagonian toothfish ( <i>Dissostichus eleginoides</i> )	29.418,5	16,8%	225.916,5	-0,4%
Argentine sea bass ( <i>Acanthistius brasiliensis</i> )	257,4	977,0%	1.252,8	-25,1%
Stripped weakfish ( <i>Cynoscion guatucupa</i> )	137,9	-84,5%	1.688,7	-34,1%
Southern blue whiting ( <i>Micromesistius australis</i> )	194,5	-91,7%	10.761,0	-22,6%
Argentine red shrimp ( <i>Pleoticus muelleri</i> )	54,8	-97,8%	14.022,5	-3,0%
Argentine squid ( <i>Illex argentinus</i> )	4.271,4	-8,8%	48.362,5	10,1%
Patagonian scallops ( <i>Zygochlamys patagónica</i> )	287,5	-52,8%	66.274,4	-74,0%
<b>Group total</b>	<b>42.467,8</b>	<b>-27,8%</b>	<b>513.165,0</b>	<b>-31,0%</b>
<b>Total</b>	<b>60.420,0</b>	<b>-13,6%</b>	<b>610.410,5</b>	<b>-26,7%</b>

Source: own elaboration based on DNCP data  
Data updated to 11/13/2009

## AVERAGE OF FISHING DAYS PER VESSEL

Type of vessels	October 2009	Rate variation compared to the previous month (%)	Rate variation compared to the same period of the previous year (%)
Trawlers	20,0	-4,5%	-16,4%
Coastal vessels	11,5	-16,0%	-37,0%
Ice trawlers	20,0	6,9%	-17,0%
Longliners	28,0	-6,7%	-8,7%
Jiggers	4,0	3,7%	100,0%
Rada vessels	9,1	63,1%	-33,4%
Surimi vessels	27,5	0,6%	8,6%
Outriggers	20,7	-17,7%	12,7%
<b>Total</b>	<b>15,9</b>	<b>-1,3%</b>	<b>-15,7%</b>

Source: own elaboration based on DNCP data

# EXPORTS

Exports sequenced by tariff items:

Tariff code	Description	September 2009		Rate variation compared to the same period of the previous year	
		T	Thousand U\$S	t (%)	Thousand U\$S (%)
0301.	Live fish.	0	6	-10,3%	200,0%
0302.	Fresh or chilled fish exc. fillets.	152	596	-74,1%	-39,6%
0303.	Frozen fish exc. fillets.	14.792	19.213	23,2%	7,1%
0304.	Fresh fillets and other fish meats.	9.991	25.795	13,3%	-10,9%
0305.	Fish fit for human consumption, dried, salted or in brine, smoked fish/flours/meals and pellets.	59	196	-77,1%	-76,7%
0306.	Crustaceans.	9.867	66.854	65,5%	19,4%
0307.	Molluscs.	2.720	8.072	-77,8%	-41,6%
0511.91.00	Products not expressed in other chapters. Unfit for human consumption.				
1504.	Fats and oils of fish or marine mammals.	87	156	-26,3%	-3,7%
1603.	Extracts and juices of fish, crustaceans, molluscs and other aquatic invertebrates.				
1604.	Prepared or preserved fish.	312	990	-23,9%	-39,1%
1605.	Prepared or preserved seafood.	1	2	-92,0%	-97,8%
2301.20	Flours, meals and pellets. Unfit for human consumption.	4.523	2.111	89,8%	4,8%
<b>Total</b>		<b>42.504</b>	<b>123.991</b>	<b>-0,7%</b>	<b>1,3%</b>

Source: own elaboration based on INDEC data

Tariff code	Description	Accrued in 2009 (until 09/30/09)		Rate variation compared to the same period of the previous year	
		t	Thousand U\$S	t (%)	Thousand U\$S (%)
0301.	Live fish.	1	48	19,3%	9,1%
0302.	Fresh or chilled fish exc. fillets.	5.073	10.327	-8,3%	-1,0%
0303.	Frozen fish exc. fillets.	126.261	174.962	16,0%	1,3%
0304.	Fresh fillets and other fish meats.	97.447	264.304	-2,2%	-17,9%
0305.	Fish fit for human consumption, dried, salted or in brine, smoked fish/flours/meals and pellets.	7.644	18.977	-27,0%	-14,5%
0306.	Crustaceans.	40.229	245.197	14,0%	-22,2%
0307.	Molluscs.	55.941	90.704	-67,8%	-49,7%
0511.91.00	Products not expressed in other chapters. Unfit for human consumption.	157	303	84,7%	-15,6%
1504.	Fats and oils of fish or marine mammals.	501	835	-57,1%	-40,2%
1603.	Extracts and juices of fish, crustaceans, molluscs and other aquatic invertebrates.	23	85	-59,6%	-64,4%
1604.	Prepared or preserved fish.	2.307	7.570	-5,0%	-14,3%
1605.	Prepared or preserved seafood.	232	1.410	15,4%	-12,0%
2301.20	Flours, meals and pellets. Unfit for human consumption.	27.856	21.174	-23,6%	-27,3%
<b>Total</b>		<b>363.672</b>	<b>835.896</b>	<b>-23,2%</b>	<b>-21,5%</b>

Source: own elaboration based on INDEC data

# EXPORTS

Argentine hake exports.

Tariff Code	Description	September 2009			Rate variation compared to the same period of the previous year		
		t	Thousand U\$S	Average Price U\$S/kg	t (%)	Thousand U\$S (%)	Average Price (%)
0302.69.10.100P	Argentine hake, fresh or chilled.	49	180	3,673	-84,5%	-62,0%	144,9%
0303.78.00.110D	Argentine hake, frozen in CN packages of 1 kg or less.	23	36	1,565	187,5%	125,0%	-21,7%
0303.78.00.190E	Argentine hake, frozen, the others.	3.863	5.514	1,427	28,1%	-9,0%	-28,9%
0304.29.10	Argentine hake, frozen fillets.	7.678	19.199	2,501	23,0%	-7,0%	-24,4%
<b>Total of Argentine hake</b>		<b>11.613</b>	<b>24.929</b>	<b>2,147</b>	<b>21,2%</b>	<b>-8,3%</b>	<b>-24,3%</b>

Source: Own elaboration based on INDEC data.

Tariff Code	Description	Accrued in 2009 (until 09/30/09)			Rate variation compared to the same period of the previous year		
		t	Thousand U\$S	Average Price U\$S/kg	t (%)	Thousand U\$S (%)	Average Price (%)
0302.69.10.100P	Argentine hake, fresh or chilled.	4.128	7.029	1,703	17,2%	9,1%	-6,9%
0303.78.00.110D	Argentine hake, frozen in CN packages of 1 kg or less.	212	311	1,467	133,0%	111,6%	-9,2%
0303.78.00.190E	Argentine hake, frozen, the others.	29.096	44.093	1,515	22,6%	-0,6%	-19,0%
0304.29.10	Argentine hake, frozen fillets.	62.441	159.445	2,554	3,6%	-18,5%	-21,3%
<b>Total of Argentine hake</b>		<b>95.877</b>	<b>210.878</b>	<b>2,199</b>	<b>9,4%</b>	<b>-14,5%</b>	<b>-21,8%</b>

Source: Own elaboration based on INDEC data.

# EXPORTS

Longtail hake exports.

Tariff code	Description	September 2009			Rate variation compared to the same period of the previous year		
		t	Thousand U\$S	Average price U\$S/kg	t (%)	Thousand U\$S	Average price (%)
0303.79.46.100X	Frozen longtail hake in packages of less or 1 kg.	20	30	1,500			
0303.79.46.900Q	Frozen longtail hake, the others (more than 1 kg.).	569	619	1,088	120,5%	79,9%	-18,4%
0304.20.90.300B	Longtail hake fillets in packages of more than 1 kg.	582	1.380	2,371	334,3%	327,2%	-1,6%
<b>Longtail hake total</b>		<b>1.171</b>	<b>2.029</b>	<b>1,733</b>	<b>198,7%</b>	<b>204,2%</b>	<b>1,8%</b>

Source: own elaboration based on INDEC data

Tariff code	Description	Accrued in 2009 (until 09/30/09)			Rate variation compared to the same period of the previous year		
		t	Thousand U\$S	Average price U\$S/kg	t (%)	Thousand U\$S	Average price (%)
0303.79.46.100X	Frozen longtail hake in packages of less or 1 kg.	60	90	1,500			
0303.79.46.900Q	Frozen longtail hake, the others (more than 1 kg.).	11.761	14.151	1,203	-0,1%	-11,6%	-11,5%
0304.20.90.300B	Longtail hake fillets in packages of more than 1 kg.	9.144	23.976	2,622	-24,9%	-23,7%	1,7%
<b>Longtail hake total</b>		<b>20.965</b>	<b>38.217</b>	<b>1,823</b>	<b>-12,5%</b>	<b>-19,4%</b>	<b>-7,9%</b>

Source: own elaboration based on INDEC data

# EXPORTS

Surimi exports.

Tariff code	Description	September 2009			Rate variation compared to the same period of the previous year		
		t	Thousand U\$S	Average price U\$S/kg	t (%)	Thousand U\$S	Average price (%)
0304.90.00.300M	Surimi.	27	99	3,667	125,0%	83,3%	-18,5%
1604.20.90.100U	Prepared surimi in airtight containers of 1 kg or less.	80	259	3,238	1,3%	14,6%	13,2%
<b>Total surimi</b>		<b>107</b>	<b>358</b>	<b>3,346</b>	<b>17,6%</b>	<b>27,9%</b>	<b>8,7%</b>

Source: own elaboration based on INDEC data

Tariff code	Description	Accrued in 2009 (until 09/30/09)			Rate variation compared to the same period of the previous year		
		t	Thousand U\$S	Average price U\$S/kg	t (%)	Thousand U\$S	Average price (%)
0304.90.00.300M	Surimi.	7.262	23.798	3,277	-20,7%	-30,5%	-12,4%
1604.20.90.100U	Prepared surimi in airtight containers of 1 kg or less.	388	1.254	3,232	1392,3%	1617,8%	15,1%
<b>Total surimi</b>		<b>7.650</b>	<b>25.052</b>	<b>3,275</b>	<b>-16,7%</b>	<b>-27,0%</b>	<b>-12,4%</b>

Source: own elaboration based on INDEC data

# EXPORTS

Shad exports.

Tariff code	Description	September 2009			Rate variation compared to the same period of the previous year		
		t	Thousand US\$	Average price US\$/kg	t (%)	Thousand US\$	Average price (%)
0303.79.51.900M	Frozen shad in packages of 1 kg or more.	1.139	950	0,834	12,4%	13,8%	1,2%
<b>Shad total</b>		<b>1.139</b>	<b>950</b>	<b>0,834</b>	<b>12,4%</b>	<b>13,8%</b>	<b>1,2%</b>

Source: own elaboration based on INDEC data

Tariff code	Description	Accrued in 2009 (until 09/30/09)			Rate variation compared to the same period of the previous year		
		t	Thousand US\$	Average price US\$/kg	t (%)	Thousand US\$	Average price (%)
0303.79.51.900M	Frozen shad in packages of 1 kg or more.	11.115	9.136	0,822	20,4%	22,2%	1,5%
<b>Shad total</b>		<b>11.115</b>	<b>9.136</b>	<b>0,822</b>	<b>20,4%</b>	<b>22,2%</b>	<b>1,5%</b>

Source: own elaboration based on INDEC data

# EXPORTS

## Shrimps exports.

Tariff code	Description	September 2009			Rate variation compared to the same period of the previous year		
		t	Thousand U\$S	Average price U\$S/kg	t (%)	Thousand U\$S	Average price (%)
0306.13.91.911F	Whole shrimps in packages of 1 kg or less.	342	2.663	7,787	322,2%	182,4%	-33,1%
0306.13.91.919Y	Whole shrimps in packages of more than 1kg.	8.534	57.709	6,762	58,5%	13,8%	-28,2%
<b>Whole shrimps total</b>		<b>8.876</b>	<b>60.372</b>	<b>6,802</b>	<b>64,8%</b>	<b>19,0%</b>	<b>-27,8%</b>
0306.13.99.110W	Shrimps exc. whole in packages of 1 kg or less.	174	1.315	7,557	100,0%	151,0%	25,5%
0306.13.99.190X	Shrimps exc. whole in packages of more than 1 kg.	801	5.069	6,328	99,3%	34,9%	-32,3%
<b>Shrimps exc. whole total</b>		<b>975</b>	<b>6.384</b>	<b>6,548</b>	<b>99,4%</b>	<b>49,1%</b>	<b>-25,2%</b>
<b>Shrimps total</b>		<b>9.851</b>	<b>66.756</b>	<b>6,777</b>	<b>67,7%</b>	<b>21,4%</b>	<b>-27,6%</b>

Source: own elaboration based on INDEC data

Tariff code	Description	Accrued in 2009 (until 09/30/09)			Rate variation compared to the same period of the previous year		
		t	Thousand U\$S	Average price U\$S/kg	t (%)	Thousand U\$S	Average price (%)
0306.13.91.911F	Whole shrimps in packages of 1 kg or less.	1.230	8.999	7,316	328,6%	253,3%	-17,6%
0306.13.91.919Y	Whole shrimps in packages of more than 1kg.	35.187	211.898	6,022	9,9%	-26,6%	-33,2%
<b>Whole shrimps total</b>		<b>36.417</b>	<b>220.897</b>	<b>6,066</b>	<b>13,8%</b>	<b>-23,5%</b>	<b>-32,7%</b>
0306.13.99.110W	Shrimps exc. whole in packages of 1 kg or less.	778	5.036	6,473	158,5%	169,3%	4,2%
0306.13.99.190X	Shrimps exc. whole in packages of more than 1 kg.	2.812	17.908	6,368	16,5%	-12,3%	-24,7%
<b>Shrimps exc. whole total</b>		<b>3.590</b>	<b>22.944</b>	<b>6,391</b>	<b>32,3%</b>	<b>2,9%</b>	<b>-22,2%</b>
<b>Shrimps total</b>		<b>40.007</b>	<b>243.841</b>	<b>6,095</b>	<b>15,2%</b>	<b>-21,6%</b>	<b>-31,9%</b>

Source: own elaboration based on INDEC data

# EXPORTS

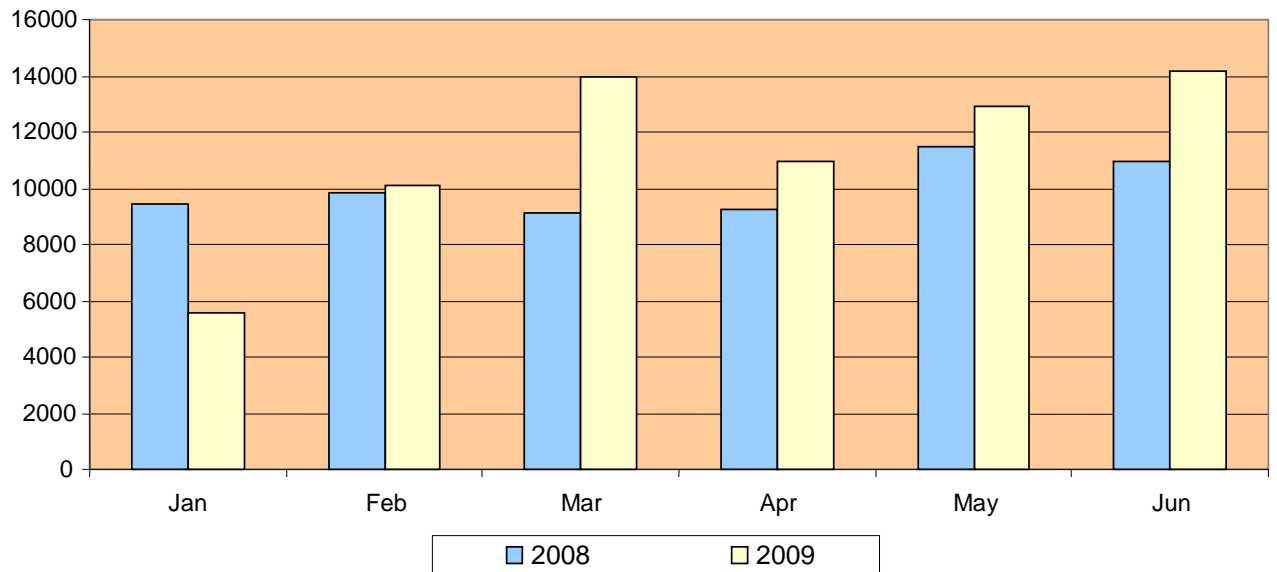
Argentine hake exports by products. First semester of 2009.

Product	Type	Accrued in 2009 (until 06/30/09)			Rate variation compared to the same period of the previous year		
		t	Thousand U\$S	Average price U\$S/kg	t (%)	Thousand U\$S (%)	Average price(%)
Frozen meats	Minced	1.961,5	2.612,4	1.331,8	106,4%	68,0%	-18,6%
	Sausage	477,5	1.026,3	2.149,1	322,4%	206,4%	-27,5%
	Cococha	60,2	496,9	8.254,1	-36,8%	-25,0%	18,7%
	Loins	28,2	95,3	3.376,1	822,0%	344,7%	-51,8%
	Breast	31,9	39,5	1.238,9	3698,5%	5782,5%	54,9%
	Wings and necks	13,4	11,7	873,9	-4,5%	-18,3%	-14,5%
	Head	9,0	6,3	700,0			
	Pieces	3,5	4,2	1.203,3	209,0%	5,6%	-65,8%
	Unidentified	0,0	0,0		-100,0%	-100,0%	-100,0%
<b>Frozen meats total</b>		<b>2.585,1</b>	<b>4.292,5</b>	<b>1.660,4</b>	<b>0,9</b>	<b>93,7%</b>	<b>44,8%</b>
Fresh meats	Cococha	32,1	173,4	5.407,2	98,4%	43,4%	-27,7%
<b>Fresh meats total</b>		<b>32,1</b>	<b>173,4</b>	<b>5.407,2</b>	<b>1,0</b>	<b>98,4%</b>	<b>43,4%</b>
Whole	Frozen	2.756,7	2.527,5	916,9	1617,4%	2108,6%	28,6%
	Fresh	256,1	867,8	3.389,2	-46,9%	-56,2%	-17,4%
<b>Whole total</b>		<b>3.012,8</b>	<b>3.395,3</b>	<b>1.127,0</b>	<b>3,7</b>	<b>368,5%</b>	<b>62,0%</b>
Smoked fillets		20,8	72,0	3.468,7			
<b>Smoked fillets total</b>		<b>20,8</b>	<b>72,0</b>	<b>3.468,7</b>			
Frozen fillets	Skinless and with a few spines	30.690,1	77.445,1	2.523,5	-10,1%	-25,1%	-16,7%
	Skinned and with a few spines	3.302,8	8.674,5	2.626,5	150,3%	104,9%	-18,1%
	Skinless and with a few spines greasless	2.552,3	6.500,1	2.546,7	256,9%	193,6%	-17,7%
	Skinless and without spines	2.403,2	6.446,2	2.682,3	216,3%	133,1%	-26,3%
	Skinless and without spines greasless	2.696,0	12.688,0	4.706,2	-12,5%	-22,4%	-11,3%
<b>Frozen fillets total</b>		<b>41.644,4</b>	<b>111.754,1</b>	<b>2.683,5</b>	<b>0,0</b>	<b>4,1%</b>	<b>-13,4%</b>
Fresh fillets	Skinless and with a few spines	3,0	13,0	4.333,3	-90,3%	-92,7%	-24,5%
<b>Fresh fillets total</b>		<b>2,8</b>	<b>13,3</b>	<b>4.698,6</b>	<b>-0,9</b>	<b>-90,8%</b>	<b>-92,5%</b>
H&G	Frozen	16.472,3	26.891,0	1.632,5	10,3%	-0,5%	-9,8%
	Fresh	3.722,1	5.615,6	1.508,7	78,0%	91,4%	7,5%
<b>H&amp;G total</b>		<b>20.194,4</b>	<b>32.506,6</b>	<b>1.609,7</b>	<b>0,2</b>	<b>18,6%</b>	<b>8,5%</b>
Roes	Frozen	42,4	53,7	1.266,0	-77,4%	-86,3%	-39,3%
<b>Roes total</b>		<b>42,4</b>	<b>53,7</b>	<b>1.266,0</b>	<b>-0,8</b>	<b>-77,4%</b>	<b>-86,3%</b>
Preparations	Breaded	162,8	826,2	5.074,8	-78,8%	-49,5%	138,3%
<b>Preparations total</b>		<b>162,8</b>	<b>826,2</b>	<b>5.074,8</b>	<b>-0,8</b>	<b>-78,8%</b>	<b>-49,5%</b>
<b>Argentine hake total</b>		<b>67.697,6</b>	<b>153.086,8</b>	<b>2.261,3</b>	<b>0,1</b>	<b>12,8%</b>	<b>-8,0%</b>

Source: Own elaboration based on Customs data.

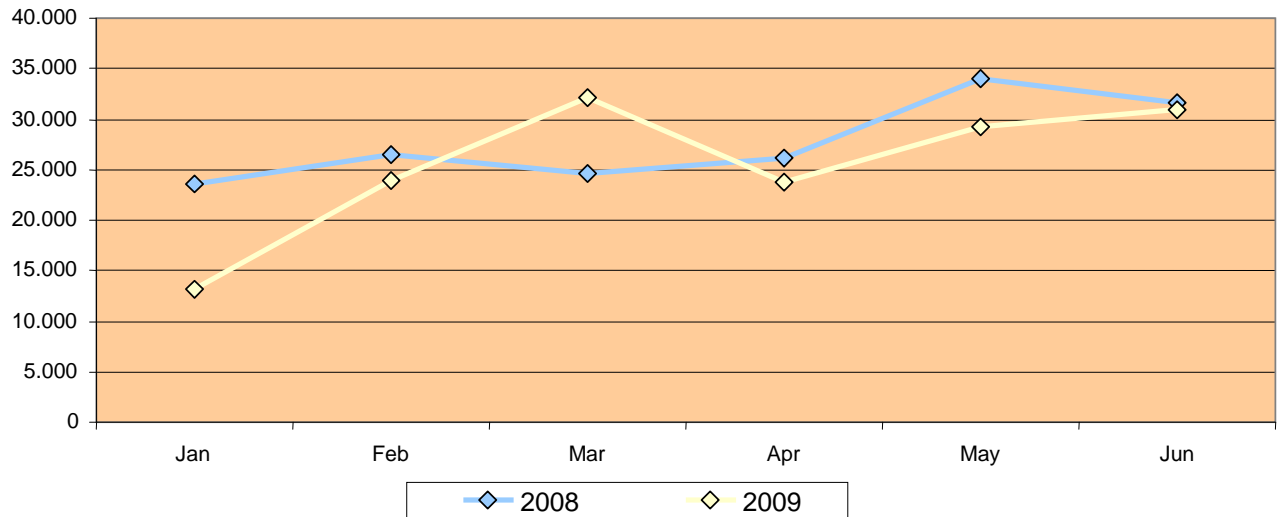
# EXPORTS

## Argentine hake exports (Tonnes)



Source: Own elaboration based on Customs data.

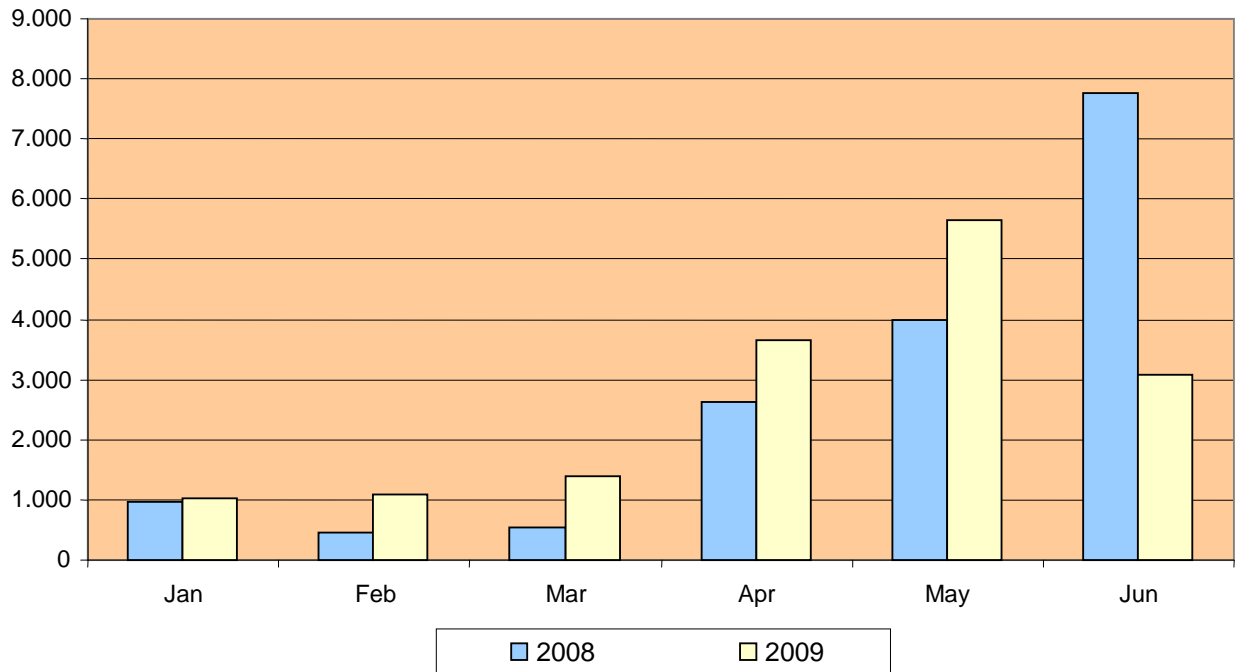
## Argentine hake exports (Thousand U\$)



Source: Own elaboration based on Customs data.

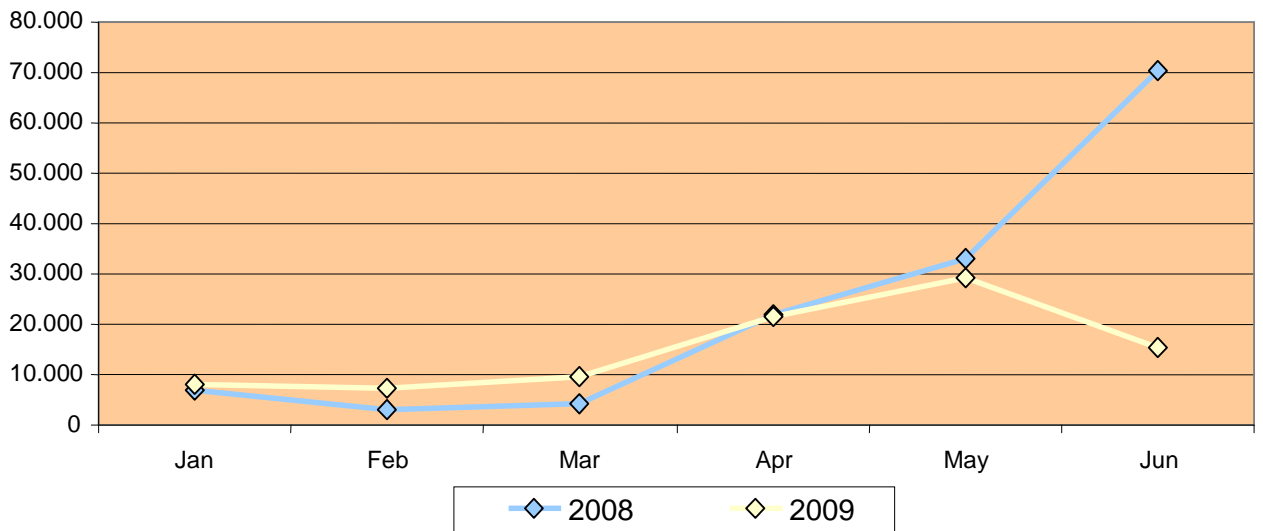
# EXPORTS

## Shrimp exports (Tonnes)



Source: Own elaboration based on Customs data.

## Shrimps exports (Thousand U\$)



Source: Own elaboration based on Customs data.

# EXPORTS

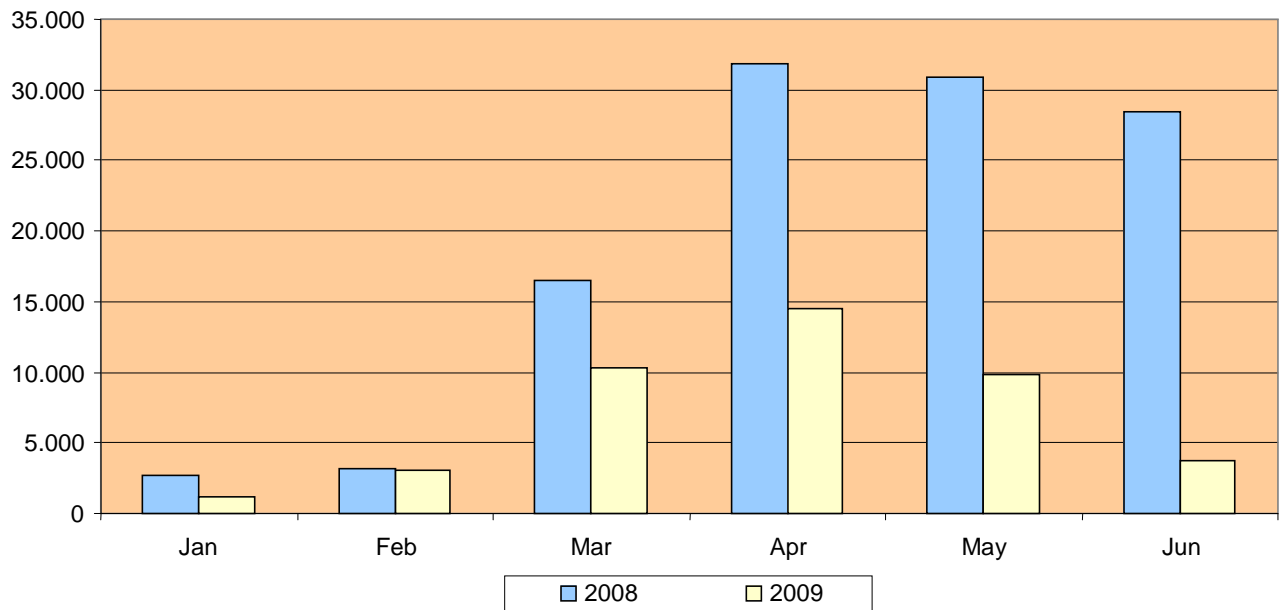
Argentine squid exports by products. First semestre of 2009.

Product	Accrued in 2009 (until 06/30/09)			Rate variation compared to the same period of the previous year		
	t	Thousand U\$S	Average price U\$S/kg	t (%)	Thousand U\$S (%)	Average price (%)
Whole	23.035,6	17.791,5	772,3	-54,8%	-45,1%	21,4%
Sheath	12.317,1	14.691,0	1.192,7	-74,1%	-70,2%	15,0%
Cleaned tube	2.855,4	5.370,3	1.880,7	-55,8%	-48,7%	15,9%
Tentacle	2.947,0	3.468,0	1.176,8	-59,3%	-50,6%	21,4%
Preparations	166,1	1.014,7	6.110,0	843,2%	1774,1%	98,7%
Skinless rings	259,8	585,8	2.254,7	-21,6%	-19,9%	2,1%
Wing	1.009,9	513,6	508,5	-5,9%	0,3%	6,6%
Pieces	88,8	48,1	541,2	412,3%	122,8%	-56,5%
Viscera	0,0	0,0	300,0			
Gonads	0,0	0,0		-100,0%	-100,0%	-100,0%
Roes	0,0	0,0		-100,0%	-100,0%	-100,0%
<b>Argentine squid total</b>	<b>42.679,6</b>	<b>43.482,9</b>	<b>1.018,8</b>	<b>-62,5%</b>	<b>-56,8%</b>	<b>15,1%</b>

Source: Own elaboration based on Customs data.

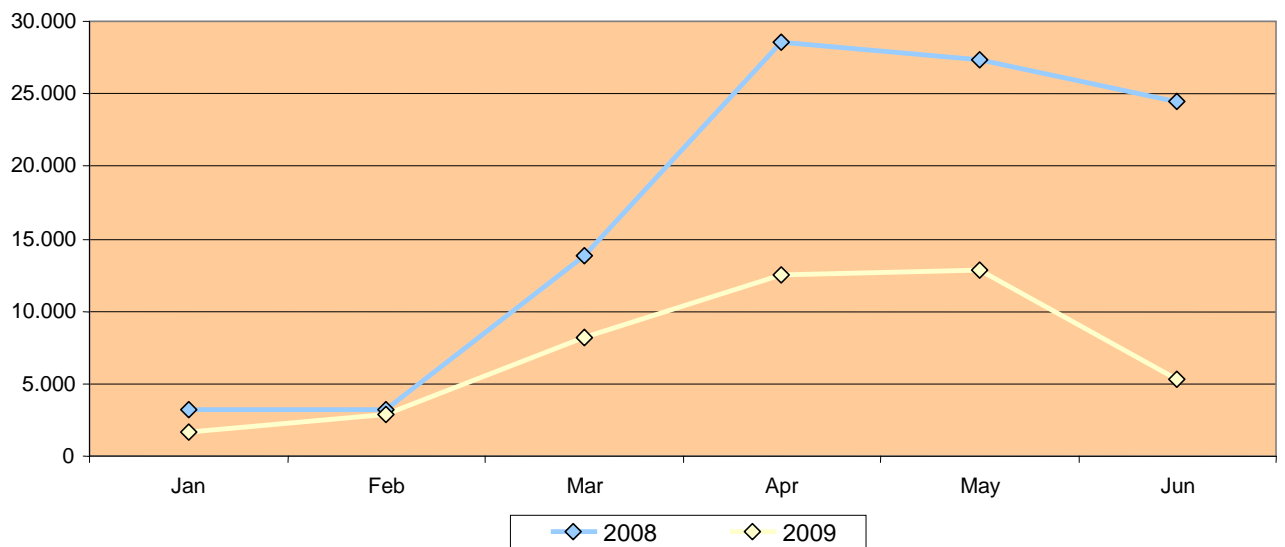
# EXPORTS

## Argentine squid exports (Tonnes)



Source: Own elaboration based on Customs data.

## Argentine squid exports (Thousand U\$S)



Source: Own elaboration based on Customs data.

# PRICES

Wholesale price index. Base: 1993=100.

	October 2009	Rate variation compared to the previous month	Rate variation compared to December 2008
Domestic wholesale prices	382,75	0,9%	7,8%
Fisheries	340,38	-	-6,1%
Pink cuskeel		-	
Argentine anchovy		-	
Chub Mackerel		-	
Flounder		-	
Argentine hake		-	
White croaker		-	

Provisory data.  
Source: INDEC

# GUIDE PRICES

Exports prices.

Species	Description	September 2009 U\$S/t
<b>Argentine hake</b>	H&G&T (150-250 g), interleaved.	1.450/1.500
	H&G&T (500-800 g), interleaved.	1.300/1.650
	Fillets, interleaved, with few spines, skinless.	2.150/2.500
<b>White croaker</b>	Whole, frozen.	750/1.100
<b>Pink cuskeel</b>	H&G (800-1500 g).	2.500/3.000
<b>Nothotenia</b>	HGT, interleaved.	1.180/1.250
<b>Longtail hake fillets</b>	Skinless, with few spines.	2.200/2.600
<b>Shrimps</b>	L2.	7.300/8.300
	L3.	5.100/5.400
	L4.	3.650/4.750
<b>Argentine squid</b>	Whole.	1.000/1.700
	Tube.	2.000/2.100
	Cleaned tube.	2.600/3.000
<b>Fish meal</b>		780/1.500

Source: Own elaboration.