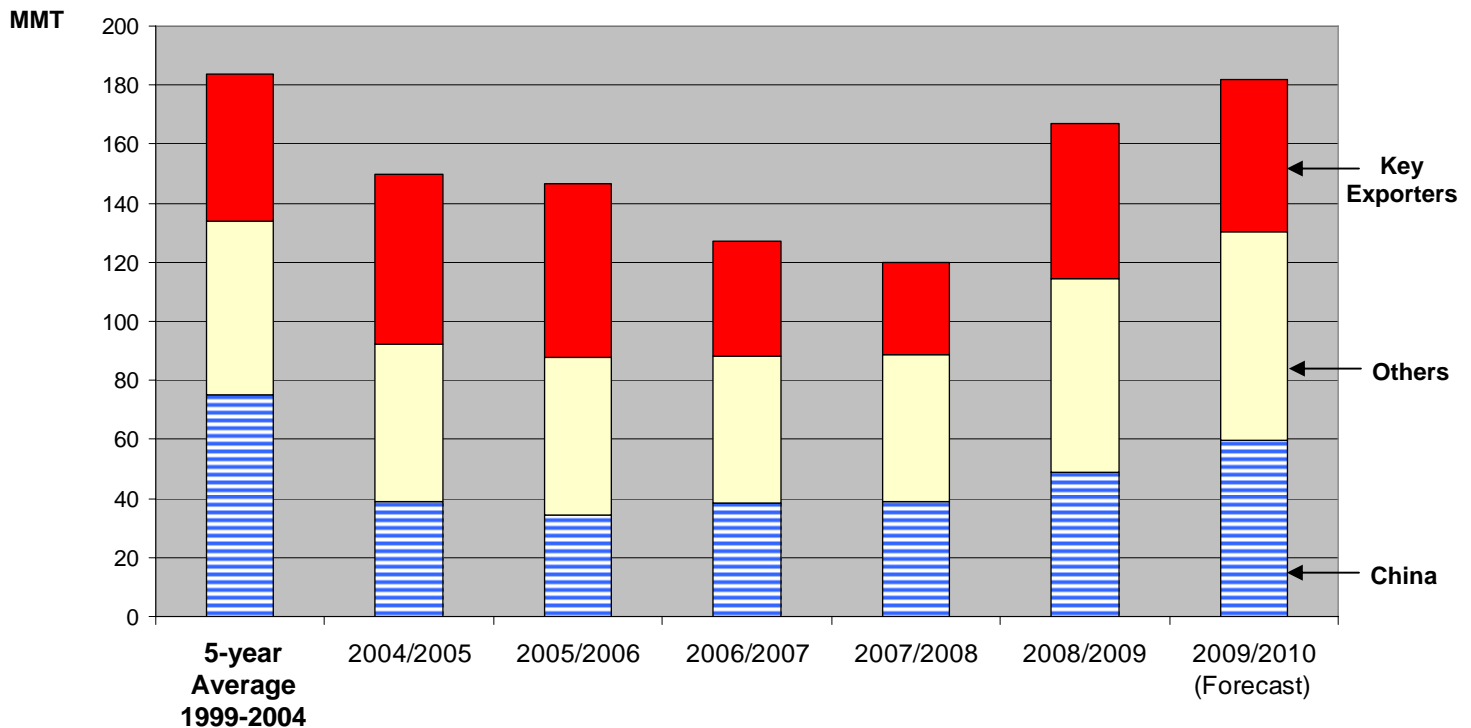




Grain: World Markets and Trade

Wheat Stocks Surge, But Market Availability Limited



Global wheat stocks have sharply rebounded from 2007/08's record low, and are forecast to climb even higher by the end of 2009/10, as illustrated above. Virtually every wheat producing or consuming country holds some working stocks or pipeline supplies throughout their distribution system and some carryover until the next crop is harvested. Many countries hold strategic government stocks for public distribution, for food security against domestic crop shortfalls, or to diminish reliance on international suppliers. Whatever the reason, stocks held by most of these countries, like China, are generally not available to the world market, and therefore have little impact on global price stability.

A few key exporting countries (the United States, EU, Canada, and Australia) are surplus producers which consistently supply the world and hold carryover stocks available to the market. History has demonstrated that there is a strong inverse relationship between global prices and the reserves held by these countries. For example, one reason for last year's wheat price surge was the unprecedented, multi-year drop in these countries' stocks.

In contrast, Russia has not only built large reserves, both private and government, but also has become a significant exporter. However, the continued and consistent availability of those additional stocks is presently uncertain, and uncertainty often exacerbates global market and price instability, particularly if the disposition of those potential exportable supplies are policy, not market, driven.

TABLE OF CONTENTS

World Markets and Trade: Commentary and Current Data	
Wheat	4
Rice	10
Coarse Grains.....	15
Historical Data Series for Selected Regions and Countries	37
Endnotes to Grain: World Markets and Trade	56

The Foreign Agricultural Service (FAS) updates its production, supply and distribution database for cotton, oilseeds, and grains at 9 a.m. on the day the World Agricultural Supply and Demand Estimates (WASDE) report is released. It is available on the FAS website (<http://www.fas.usda.gov/psdonline/>). This circular is released at 10:00 a.m. on the same day, together with its downloadable data set.

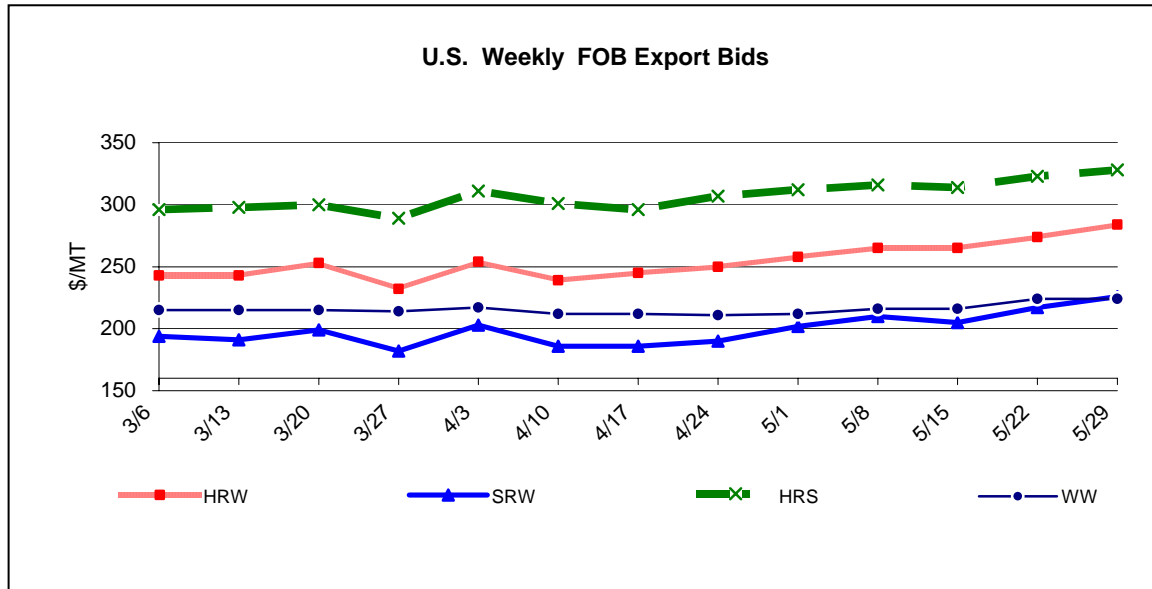
All Grain Summary Comparison

	Marketing Year	Wheat			Rice, Milled			Corn		
		2007/08	2008/09	2009/10	2007/08	2008/09	2009/10	2007/08	2008/09	2009/10
Production										
United States	(Jun-May)	55.8	68.0	54.9	6.3	6.5	7.0	331.2	307.4	303.2
Other		553.9	614.2	601.2	427.4	437.4	441.5	460.4	479.9	478.3
World Total		609.7	682.2	656.1	433.7	443.9	448.5	791.6	787.3	781.5
Domestic Consumption										
United States	(Jun-May)	28.6	34.0	34.1	4.1	4.3	4.2	261.7	263.9	268.2
Other		584.3	598.3	602.5	422.4	427.7	435.8	508.0	513.6	524.5
World Total		612.9	632.4	636.6	426.4	432.0	440.0	769.7	777.5	792.8
Ending Stocks										
United States	(Jun-May)	8.3	18.2	17.6	0.9	0.7	1.2	41.3	40.7	27.7
Other		111.6	150.2	165.0	79.7	89.2	93.8	89.4	97.9	97.8
World Total		120.0	168.4	182.7	80.6	89.9	95.0	130.7	138.5	125.5
TY Imports										
United States	(Jun-May)	2.9	3.2	3.1	0.7	0.7	0.8	0.5	0.4	0.4
Other		110.9	129.0	115.2	27.5	25.6	25.8	99.4	75.7	79.1
World Total		113.8	132.2	118.3	28.1	26.3	26.6	99.9	76.1	79.5
TY Exports										
United States	(Jun-May)	34.3	27.0	24.5	3.3	3.1	3.1	60.8	44.5	49.0
Other		82.4	108.0	96.8	26.4	25.9	26.5	37.6	33.4	32.2
World Total		116.8	135.0	121.3	29.7	29.0	29.6	98.3	77.9	81.2

Note: Consumption in this table has not been adjusted for differences in marketing year imports and exports and therefore differs from global totals shown elsewhere.

Marketing years for U.S. grains are: Wheat (Jun-May), Rice (Aug-Jul), Corn (Sep-Aug).
'Marketing Year' column is germane for U.S. wheat only.

WHEAT: WORLD MARKETS AND TRADE



PRICES:

Domestic: Prices for all classes of wheat jumped in May after being relatively flat for several months. Hard Red Winter (HRW) increased \$26 to \$284/ton, Soft Red Winter (SRW) rose \$24 to \$226/ton, Hard Red Spring (HRS) expanded \$16 to \$328/ton, and Soft White (SWW) is up \$12 to \$224/ton.

TRADE CHANGES IN 2009/2010

Selected Exporters:

- **Ukraine** is down 1.0 million tons to 5.0 million on reduced crop prospects.
- **Russia** is up 500,000 tons to 18.0 million on large carry-over stocks and potentially reduced competition.

Selected Importers:

- **Afghanistan** is down 400,000 tons to 1.1 million on larger domestic production.
- **Azerbaijan** is lowered 300,000 tons to 1.0 million based on greater carry-in stocks.

TRADE CHANGES IN 2008/2009

Selected Exporters:

- **Canada, EU, Kazakhstan, and Ukraine** are all boosted 500,000 tons based on unexpectedly strong late-season shipments.
- **Russia** is raised 1.0 million tons to a record 18.0 million, on the continued heavy pace of shipments, particularly to Egypt.

Selected Importers:

- **Azerbaijan, Bangladesh, and Sudan** are all raised 300,000 tons, reaching record supplies despite relatively high prices.
- **Egypt** is up 1.0 million tons to 9.5 million, a record, on higher shipments.
- **Turkey** is up 500,000 tons to 3.5 million based on the strong pace of imports, particularly from Russia.
- **Uzbekistan** is up 400,000 tons to 1.4 million due to increased imports from Kazakhstan.

World Wheat, Flour, and Products Trade
July/June Year, Thousand Metric Tons

	2005/06	2006/07	2007/08	2008/09	2009/10 May	2009/10 Jun
TY Exports						
Argentina	8,216	12,168	10,237	7,750	4,000	4,000
Australia	15,211	11,241	7,449	13,500	14,500	14,500
Canada	15,633	19,278	16,820	17,000	18,000	18,000
China	1,397	2,783	2,835	750	1,500	1,500
EU-27	15,701	13,816	12,271	22,500	18,000	18,000
India	369	200	43	300	2,000	2,000
Kazakhstan	3,817	8,089	8,181	5,000	6,500	6,500
Russia	10,514	10,584	12,552	18,000	17,500	18,000
Turkey	3,208	2,200	1,763	2,000	1,900	2,100
Ukraine	6,461	3,366	1,236	12,500	6,000	5,000
Others	6,059	6,844	9,035	8,668	7,419	7,224
Subtotal	86,586	90,569	82,422	107,968	97,319	96,824
United States	27,424	25,041	34,328	27,000	24,500	24,500
World Total	114,010	115,610	116,750	134,968	121,819	121,324
TY Imports						
Algeria	5,476	4,874	5,904	5,600	5,400	5,400
Bangladesh	2,034	1,731	1,555	2,800	2,200	2,000
Brazil	5,823	7,704	7,136	6,000	5,700	5,700
Colombia	1,314	1,241	1,309	1,325	1,400	1,400
Egypt	7,771	7,300	7,700	9,500	8,500	8,500
EU-27	6,758	5,137	6,942	6,500	6,500	6,500
Indonesia	4,981	5,711	5,458	5,300	5,500	5,500
Iran	1,105	700	200	8,500	6,000	6,000
Iraq	4,996	2,912	3,424	3,400	3,800	3,800
Israel	1,663	1,458	1,186	2,000	1,800	1,800
Japan	5,469	5,747	5,701	5,500	5,500	5,500
Korea, South	3,884	3,439	3,092	3,200	3,400	3,400
Libya	1,722	994	1,569	1,500	1,600	1,600
Malaysia	1,216	1,202	1,331	1,250	1,350	1,350
Mexico	3,549	3,610	3,136	3,400	3,400	3,400
Morocco	2,418	1,801	4,191	3,500	1,800	1,800
Nigeria	3,678	3,265	2,677	3,200	3,400	3,400
Peru	1,644	1,367	1,452	1,500	1,525	1,525
Philippines	2,954	2,746	2,271	3,000	3,000	3,000
South Africa	1,242	885	1,333	1,500	1,500	1,500
Sudan	1,659	1,303	1,064	1,500	1,300	1,400
Tunisia	1,263	1,433	2,372	1,800	1,500	1,500
Turkey	64	1,833	2,192	3,500	1,500	1,500
Venezuela	1,691	1,765	1,498	1,650	1,700	1,700
Yemen	2,187	2,420	1,872	2,000	2,100	2,100
Others	32,263	37,681	34,318	40,055	34,455	33,905
Subtotal	108,824	110,259	110,883	128,980	115,830	115,180
Unaccounted	2,877	1,957	2,937	2,788	2,889	3,044
United States	2,309	3,394	2,930	3,200	3,100	3,100
World Total	114,010	115,610	116,750	134,968	121,819	121,324

TY=Trade Year, see Endnotes.

World Wheat Production, Consumption, and Stocks
Local Marketing Years, Thousand Metric Tons

	2005/06	2006/07	2007/08	2008/09	2009/10 May	2009/10 Jun
Production						
Argentina	14,500	16,000	16,800	8,400	11,000	11,000
Australia	25,173	10,822	13,838	21,500	23,000	23,000
Canada	25,748	25,265	20,054	28,610	26,000	25,000
China	97,445	108,466	109,298	112,500	113,000	113,500
Egypt	8,184	8,274	8,275	7,883	7,900	7,900
EU-27	132,356	124,870	120,204	151,568	138,244	135,961
India	68,640	69,350	75,810	78,600	77,500	77,500
Iran	14,308	14,500	15,000	10,000	12,000	12,000
Kazakhstan	11,000	13,500	16,600	12,500	14,000	14,000
Morocco	3,043	6,327	1,583	3,730	6,200	6,500
Pakistan	21,612	21,277	23,300	21,500	24,000	24,000
Russia	47,700	44,900	49,400	63,700	58,000	59,000
Turkey	18,500	17,500	15,500	16,800	18,000	18,000
Ukraine	18,700	14,000	13,900	25,900	19,000	18,000
Uzbekistan	5,800	5,850	6,200	6,000	6,200	6,200
Others	49,611	45,502	48,114	44,967	48,442	49,642
Subtotal	562,320	546,403	553,876	614,158	602,486	601,203
United States	57,243	49,217	55,821	68,026	55,139	54,859
World Total	619,563	595,620	609,697	682,184	657,625	656,062
Total Consumption						
Algeria	7,750	7,850	8,050	8,150	8,250	8,250
Brazil	10,450	10,300	10,300	10,700	10,900	10,900
Canada	8,242	8,986	6,373	9,190	8,800	8,800
China	101,500	102,000	106,000	102,500	101,000	101,000
Egypt	14,800	15,450	15,950	16,550	16,550	16,850
EU-27	127,525	125,500	116,536	127,500	127,500	127,500
India	69,980	73,365	76,345	70,300	72,500	72,500
Iran	14,800	15,300	15,500	15,600	15,900	15,900
Kazakhstan	7,400	7,500	7,500	7,500	7,500	7,500
Morocco	6,800	7,150	7,300	7,200	7,300	7,300
Pakistan	20,900	21,900	22,400	22,800	23,300	23,300
Russia	38,400	36,400	37,700	38,700	40,500	40,000
Turkey	16,100	16,650	16,800	16,900	17,000	17,000
Ukraine	12,500	11,700	12,900	13,800	13,400	12,800
Uzbekistan	6,118	6,500	6,800	7,050	7,000	7,100
Others	122,341	120,703	117,824	123,899	125,609	125,784
Subtotal	591,240	584,363	588,139	599,706	608,127	607,707
United States	31,320	30,940	28,574	34,046	34,646	34,102
World Total	622,560	615,303	616,713	633,752	642,773	641,809
Ending Stocks						
Australia	9,640	4,426	4,687	5,462	5,987	5,987
Canada	9,698	6,865	4,561	7,531	7,531	6,531
China	34,387	38,450	38,963	48,413	59,613	59,713
EU-27	23,384	14,075	12,414	20,482	20,226	17,443
India	2,000	4,500	5,800	13,910	16,910	16,910
Iran	3,257	3,507	3,157	4,507	6,057	6,057
Russia	3,454	2,231	1,819	8,969	7,769	10,269
Others	45,299	40,513	40,241	40,906	40,465	42,130
Subtotal	131,119	114,567	111,642	150,180	164,558	165,040
United States	15,545	12,414	8,323	18,217	17,346	17,610
World Total	146,664	126,981	119,965	168,397	181,904	182,650

Regional Wheat Imports, Production, Consumption, and Stocks

Thousand Metric Tons

	2005/06	2006/07	2007/08	2008/09	May 2009/10	Jun 2009/10
TY Imports						
North America	6,145	7,325	6,452	6,950	6,800	6,800
Central America	1,506	1,582	1,460	1,550	1,550	1,550
Caribbean	1,889	1,828	2,043	2,075	2,075	2,075
South America	12,304	13,979	13,171	12,425	12,290	12,290
European Union	6,758	5,137	6,942	6,500	6,500	6,500
Other Europe	1,457	1,468	1,923	1,675	1,575	1,675
Former Soviet Union - 12	5,487	5,958	6,021	6,725	5,750	5,400
Middle East	13,400	12,187	11,772	25,375	20,600	20,600
North Africa	18,650	16,402	21,736	21,900	18,800	18,800
Sub-Saharan Africa	13,169	11,639	10,360	12,665	12,360	12,460
East Asia	12,852	11,893	11,277	11,150	11,400	11,500
South Asia	4,842	10,949	8,272	10,125	5,715	5,115
Southeast Asia	11,923	12,495	11,649	12,300	12,750	12,750
Oceania	751	811	735	765	765	765
Total	111,133	113,653	113,813	132,180	118,930	118,280
Production						
North America	86,011	77,722	79,468	100,636	85,139	83,859
Central America	1	1	1	1	1	1
Caribbean	0	0	0	0	0	0
South America	22,422	20,872	23,612	17,224	20,253	20,253
European Union	132,356	124,870	120,204	151,568	138,244	135,961
Other Europe	4,176	4,331	4,379	4,615	4,660	4,810
Former Soviet Union - 12	90,923	84,977	92,691	115,535	104,045	104,395
Middle East	42,975	41,758	39,912	32,196	35,925	36,125
North Africa	15,178	18,576	13,948	14,588	18,625	19,025
Sub-Saharan Africa	5,219	5,724	5,547	6,242	6,138	6,138
East Asia	98,652	109,669	110,590	113,742	114,218	114,718
South Asia	96,034	95,881	105,075	103,900	106,920	107,320
Southeast Asia	150	140	155	160	180	180
Oceania	25,466	11,099	14,115	21,777	23,277	23,277
Total	619,563	595,620	609,697	682,184	657,625	656,062
Domestic Consumption						
North America	45,662	46,126	40,447	49,436	49,796	49,252
Central America	1,455	1,491	1,341	1,400	1,420	1,420
Caribbean	1,889	1,822	2,038	2,069	2,073	2,073
South America	24,136	23,876	23,964	24,450	24,980	24,980
European Union	127,525	125,500	116,536	127,500	127,500	127,500
Other Europe	5,897	5,450	5,558	5,585	5,745	5,795
Former Soviet Union - 12	75,041	72,627	75,602	78,225	79,775	78,650
Middle East	50,422	51,303	50,559	51,700	51,865	51,865
North Africa	33,847	34,205	35,894	36,525	36,925	37,225
Sub-Saharan Africa	17,777	16,656	15,859	18,305	18,406	18,506
East Asia	114,116	113,945	117,555	114,095	112,795	112,795
South Asia	100,310	105,154	109,410	103,135	105,835	105,985
Southeast Asia	11,515	11,694	10,995	12,225	12,540	12,540
Oceania	7,334	8,345	7,094	7,735	8,000	8,000
Total	616,926	618,194	612,852	632,385	637,655	636,586
Ending Stocks						
North America	25,555	19,693	13,266	26,280	25,659	24,923
Central America	196	164	150	151	157	157
Caribbean	20	20	20	20	20	20
South America	4,444	4,668	4,086	3,350	3,783	3,783
European Union	23,384	14,075	12,414	20,482	20,226	17,443
Other Europe	1,336	1,121	1,107	1,422	1,232	1,497
Former Soviet Union - 12	12,588	8,563	9,459	17,509	15,894	18,719
Middle East	13,489	12,004	10,617	12,276	13,374	13,874
North Africa	9,233	9,749	9,287	9,015	8,575	9,375
Sub-Saharan Africa	1,458	1,731	1,563	1,815	1,592	1,592
East Asia	36,606	40,838	41,781	51,338	62,421	62,646
South Asia	6,285	7,061	8,493	16,455	20,205	19,855
Southeast Asia	2,251	2,662	2,845	2,625	2,590	2,590
Oceania	9,819	4,632	4,877	5,659	6,176	6,176
Total	146,664	126,981	119,965	168,397	181,904	182,650

Regional Wheat Imports, Production, Consumption, and Stocks (Continued)

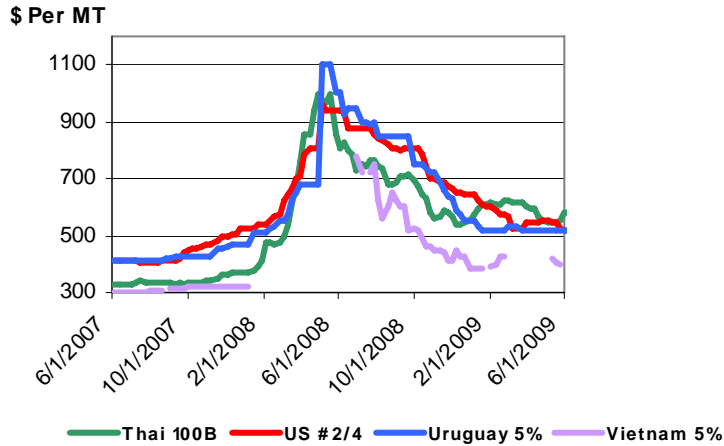
Thousand Metric Tons

2005/06	2006/07	2007/08	2008/09	May 2009/10	Jun 2009/10
---------	---------	---------	---------	----------------	----------------

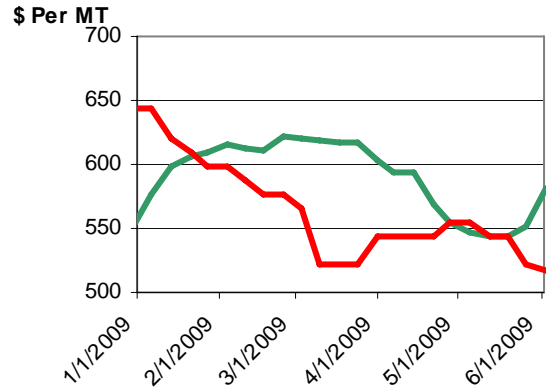
NOTES: Regional definitions appear on last page of this circular. Imports are reported on a trade year basis. All other data are reported using local marketing years.

RICE: WORLD MARKETS AND TRADE

Uncertainty Causing Bumpy Ride for Prices



Thai Quotes Above U.S. Yet Again



Despite rising global production and stocks over the past few years, uncertainty about exportable supplies has caused major price swings in the last 18 months. The spike in early 2008 was quick and smooth, but the ride down has been slow and filled with bumps, as traders try to navigate the changing landscape of government restrictions. Export bans have been stringent at times and porous at others. Domestic purchase programs have pulled supplies from the international market only to release them later, sometimes in huge quantities. Unable to predict the availability of supplies, traders often react to rumors and fear, rather than supply and demand factors. This uncertainty destabilizes the market and causes price volatility.

Thai 100B quotes have been especially bumpy, sometimes above U.S. #2/4 quotes and other times below. Since January, the spread has changed directions at least three times with a maximum spread of \$67 (U.S. over Thai) and a minimum of negative \$97. From 1990 through 2007, the average spread was \$81 and never went below negative \$8.

World Rice Trade
January/December Year, Thousand Metric Tons

	2005/06	2006/07	2007/08	2008/09	2009/10 May	2009/10 Jun
TY Exports						
Argentina	487	436	408	500	550	550
Brazil	291	201	511	400	400	450
Burma	47	31	541	500	300	300
Cambodia	350	450	500	400	500	500
China	1,216	1,340	969	1,300	1,300	1,300
Egypt	958	1,209	750	300	900	900
EU-27	144	139	144	120	100	100
Guyana	250	210	210	220	220	220
India	4,537	6,301	3,383	2,500	4,000	4,000
Japan	200	200	200	200	200	200
Pakistan	3,579	2,696	3,000	4,000	3,300	3,300
Thailand	7,376	9,557	10,011	9,000	8,500	8,500
Uruguay	812	734	634	800	800	800
Venezuela	56	80	80	80	80	80
Vietnam	4,705	4,522	4,649	5,200	5,000	5,000
Others	805	709	379	340	315	315
Subtotal	25,813	28,815	26,369	25,860	26,465	26,515
United States	3,307	3,029	3,294	3,100	3,100	3,100
World Total	29,120	31,844	29,663	28,960	29,565	29,615
TY Imports						
Bangladesh	531	1,570	1,658	700	500	500
Brazil	691	684	410	615	650	650
Canada	333	341	365	345	340	340
China	654	472	295	330	350	350
Cote d'Ivoire	750	980	800	800	800	800
Cuba	594	574	555	600	575	575
EU-27	1,083	1,342	1,433	1,200	1,300	1,250
Ghana	440	340	300	350	350	350
Haiti	399	292	320	300	325	325
Hong Kong	309	348	399	325	350	350
Iran	1,500	1,500	1,500	1,700	1,700	1,700
Iraq	1,306	613	975	1,000	1,000	1,075
Japan	681	642	546	700	700	700
Malaysia	886	799	1,020	830	850	850
Mexico	586	609	577	630	675	675
Mozambique	330	410	300	350	350	350
Nigeria	1,600	1,550	1,600	1,600	1,600	1,600
Philippines	1,791	1,900	2,500	1,800	1,750	1,750
Saudi Arabia	958	961	1,360	1,370	1,400	1,400
Senegal	600	700	860	700	700	700
Singapore	350	393	320	300	350	350
South Africa	800	960	665	720	800	800
Syria	214	235	250	300	310	310
Vietnam	350	450	300	400	400	400
Yemen	250	338	325	325	325	325
Others	7,601	9,644	7,857	7,352	7,363	7,364
Subtotal	25,587	28,647	27,490	25,642	25,813	25,839
Unaccounted	2,900	2,502	1,522	2,618	3,027	3,026
United States	633	695	651	700	725	750
World Total	29,120	31,844	29,663	28,960	29,565	29,615

TY=Trade Year, see Endnotes.

Note about dates: 2008/09 is calendar year 2009, 2007/08 is calendar year 2008, and so on.

World Rice Production, Consumption, and Stocks
Local Marketing Years, Thousand Metric Tons

	2005/06	2006/07	2007/08	2008/09	2009/10 May	2009/10 Jun
Milled Production						
Bangladesh	28,758	29,000	28,800	31,000	31,000	31,000
Brazil	7,874	7,695	8,199	8,840	8,500	9,000
Burma	10,440	10,600	10,730	10,150	10,730	10,730
Cambodia	3,771	3,946	4,221	4,284	4,450	4,450
China	126,414	127,200	130,224	135,100	134,400	134,400
Egypt	4,135	4,383	4,385	4,387	4,374	4,374
India	91,790	93,350	96,690	98,900	99,500	99,500
Indonesia	34,959	35,300	37,000	37,300	37,600	37,600
Japan	8,257	7,786	7,930	8,029	7,710	7,710
Korea, South	4,768	4,680	4,408	4,843	4,500	4,500
Nigeria	2,700	2,900	3,000	3,200	3,400	3,400
Pakistan	5,547	5,450	5,700	6,300	6,200	6,200
Philippines	9,821	9,775	10,479	10,593	10,710	10,710
Thailand	18,200	18,250	19,300	19,400	20,000	20,000
Vietnam	22,772	22,922	24,375	23,693	23,760	23,760
Others	31,110	31,166	31,964	31,363	34,146	34,143
Subtotal	411,316	414,403	427,405	437,382	440,980	441,477
United States	7,105	6,267	6,344	6,515	7,163	7,035
World Total	418,421	420,670	433,749	443,897	448,143	448,512
Total Consumption						
Bangladesh	29,000	29,764	30,747	31,000	31,800	31,800
Brazil	8,460	7,925	8,380	8,810	8,884	9,080
Burma	10,400	10,670	10,249	9,950	10,450	10,450
Cambodia	3,571	3,646	3,771	3,934	4,000	4,000
China	128,000	127,200	127,450	129,300	131,850	131,850
Egypt	3,320	3,276	3,390	4,000	3,680	3,680
India	85,088	86,700	90,466	92,400	93,000	93,000
Indonesia	35,739	35,900	36,350	36,940	37,400	37,400
Iran	3,274	3,550	3,575	3,550	3,600	3,600
Japan	8,250	8,250	8,177	8,370	8,200	8,200
Korea, South	4,766	4,887	4,670	5,007	4,750	4,750
Nigeria	4,300	4,400	4,500	4,900	5,100	5,100
Philippines	10,722	12,000	13,499	13,150	13,449	13,449
Thailand	9,544	9,780	9,600	9,500	10,400	10,400
Vietnam	18,392	18,775	19,400	19,150	19,150	19,150
Others	45,865	47,446	48,126	47,765	49,861	49,900
Subtotal	411,991	417,455	424,159	430,311	438,996	439,214
United States	3,828	4,102	4,057	4,313	4,216	4,216
World Total	415,819	421,557	428,216	434,624	443,212	443,430
Ending Stocks						
China	36,783	35,915	38,015	42,845	44,445	44,445
India	10,520	11,430	13,000	17,000	19,500	19,500
Indonesia	3,207	4,607	5,607	6,307	6,807	6,807
Japan	2,395	2,406	2,556	2,715	2,725	2,725
Philippines	5,293	4,868	4,548	3,991	3,002	3,002
Thailand	3,594	2,510	2,207	3,115	4,223	4,223
Vietnam	1,317	1,392	2,018	1,761	1,771	1,771
Others	11,512	10,711	11,745	11,436	11,003	11,363
Subtotal	74,621	73,839	79,696	89,170	93,476	93,836
United States	1,371	1,266	942	741	1,253	1,157
World Total	75,992	75,105	80,638	89,911	94,729	94,993

Note: All data are reported on a milled basis.

Regional Rice Imports, Production, Consumption, and Stocks

Thousand Metric Tons

	2005/06	2006/07	2007/08	2008/09	May 2009/10	Jun 2009/10
TY Imports						
North America	1,552	1,645	1,593	1,675	1,740	1,765
Central America	520	544	519	485	520	520
Caribbean	1,111	965	1,025	995	1,005	1,005
South America	1,095	1,070	1,112	1,160	1,165	1,165
European Union	1,083	1,342	1,433	1,200	1,300	1,250
Other Europe	138	137	98	100	100	100
Former Soviet Union - 12	504	361	335	434	380	380
Middle East	5,204	4,778	5,743	5,740	5,805	5,880
North Africa	233	355	310	310	305	305
Sub-Saharan Africa	7,447	7,804	7,264	7,360	7,485	7,485
East Asia	2,017	2,318	1,646	1,785	1,875	1,876
South Asia	925	1,962	2,043	940	740	740
Southeast Asia	4,122	5,742	4,637	3,808	3,743	3,743
Oceania	269	319	383	350	375	375
Total	26,220	29,342	28,141	26,342	26,538	26,589
Production						
North America	7,286	6,448	6,522	6,700	7,406	7,278
Central America	562	517	504	539	553	553
Caribbean	685	798	799	868	938	938
South America	14,557	14,292	15,649	15,531	16,081	16,581
European Union	1,744	1,706	1,821	1,684	1,781	1,889
Other Europe	10	10	10	10	10	10
Former Soviet Union - 12	871	1,000	1,005	1,007	1,012	1,012
Middle East	2,372	2,538	2,738	2,085	2,600	2,530
North Africa	4,170	4,413	4,406	4,408	4,409	4,409
Sub-Saharan Africa	8,645	9,235	9,391	9,922	10,315	10,315
East Asia	142,492	142,661	145,044	150,874	149,600	149,559
South Asia	131,367	133,111	136,535	141,445	142,598	142,598
Southeast Asia	102,944	103,778	109,306	108,751	110,726	110,726
Oceania	716	163	19	73	114	114
Total	418,421	420,670	433,749	443,897	448,143	448,512
Domestic Consumption						
North America	4,936	5,231	5,181	5,473	5,416	5,416
Central America	1,063	1,055	1,100	1,009	1,045	1,045
Caribbean	1,732	1,829	1,863	1,912	1,922	1,922
South America	14,002	13,418	14,314	14,709	15,038	15,239
European Union	2,664	2,939	3,255	2,673	2,912	2,970
Other Europe	117	136	136	124	110	110
Former Soviet Union - 12	1,346	1,342	1,283	1,372	1,367	1,367
Middle East	7,629	7,586	7,708	7,995	8,255	8,260
North Africa	3,575	3,546	3,721	4,306	4,020	4,020
Sub-Saharan Africa	16,402	16,924	17,367	17,044	17,741	17,741
East Asia	144,371	144,289	143,315	146,065	148,250	148,221
South Asia	121,673	124,366	129,400	131,745	133,645	133,645
Southeast Asia	92,459	94,986	97,233	97,112	99,580	99,580
Oceania	550	624	531	500	489	489
Total	412,519	418,271	426,407	432,039	439,790	440,025
Ending Stocks						
North America	1,530	1,412	1,080	869	1,429	1,333
Central America	271	299	245	207	220	220
Caribbean	225	178	134	95	106	106
South America	2,199	2,230	2,358	2,335	1,982	2,442
European Union	1,183	1,140	1,120	1,061	1,130	1,130
Other Europe	60	65	75	60	60	60
Former Soviet Union - 12	119	84	84	104	84	84
Middle East	2,079	1,697	2,052	1,859	1,924	1,924
North Africa	366	370	635	742	536	536
Sub-Saharan Africa	1,330	1,021	1,341	1,005	980	980
East Asia	40,329	39,317	41,537	46,572	48,330	48,230
South Asia	11,317	12,636	14,556	18,841	21,234	21,234
Southeast Asia	14,469	14,426	15,410	16,137	16,704	16,704
Oceania	515	230	11	24	10	10
Total	75,992	75,105	80,638	89,911	94,729	94,993

Regional Rice Imports, Production, Consumption, and Stocks (Continued)

Thousand Metric Tons

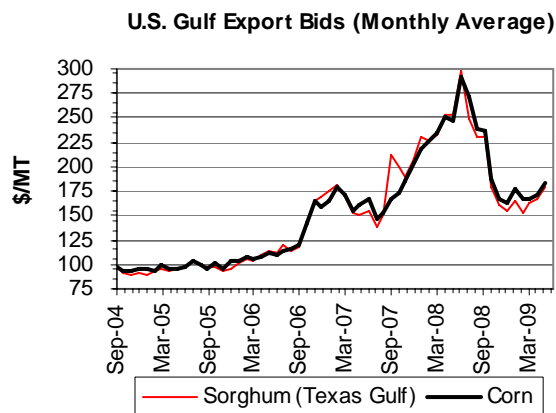
2005/06	2006/07	2007/08	2008/09	May 2009/10	Jun 2009/10
----------------	----------------	----------------	----------------	------------------------	------------------------

NOTES: Regional definitions appear on last page of this circular. Imports are reported on a trade year basis. All other data are reported using local marketing years.

COARSE GRAINS: WORLD MARKETS AND TRADE

PRICES:

Domestic: U.S. corn export prices averaged \$184 per ton in May, up \$12 from April. Concerns over Eastern Corn Belt weather and crop conditions, depreciation of the dollar, and renewed interest from investors in commodity markets have all caused stronger prices. During the first week of June, prices averaged \$194. Like corn, May sorghum prices were up \$12 from April and up another \$8 during the first week of June.



TRADE CHANGES IN 2009/10

Selected Exporters

- **Ukrainian corn** is up 500,000 tons to 3.0 million on stronger demand from the EU and Mediterranean countries and prospects for a larger crop.

TRADE CHANGES IN 2008/09

Selected Exporters

- **Russian and Ukrainian corn** are both raised to record levels because of large shipments in recent months: Russian 1.3 million tons (up 300,000), Ukrainian 5.2 million tons (up 700,000). These have been primarily to Egypt and other North African and Middle Eastern destinations, normally key U.S. markets.
- **Russian barley** is lifted 400,000 tons to 2.8 million based on stronger-than-expected exports in April and May.

World Coarse Grain Trade
October/September Year, Thousand Metric Tons

	2005/06	2006/07	2007/08	2008/09	2009/10 May	2009/10 Jun
TY Exports						
Argentina	11,243	17,191	17,786	8,255	9,705	9,705
Australia	5,614	1,993	3,895	4,725	4,960	4,960
Brazil	2,826	8,188	8,032	10,105	10,100	10,100
Canada	4,010	3,787	6,379	4,075	4,225	4,225
EU-27	3,652	5,467	4,679	5,800	5,505	5,505
India	501	721	5,539	475	1,025	1,025
Russia	1,452	1,836	1,419	4,125	2,650	2,650
Serbia	nr	863	132	1,005	1,205	1,205
South Africa	1,429	456	1,149	2,525	2,025	2,025
Ukraine	7,439	3,942	5,909	10,735	7,015	7,515
Others	8,873	10,994	5,595	4,426	4,955	4,805
Subtotal	47,039	55,438	60,514	56,251	53,370	53,720
United States	61,443	59,157	68,407	48,200	53,050	53,050
World Total	108,482	114,595	128,921	104,451	106,420	106,770
TY Imports						
Algeria	2,139	2,588	2,433	2,105	2,205	2,205
Brazil	1,106	1,496	1,216	1,005	750	750
Canada	2,029	2,285	3,201	1,700	2,470	2,470
Chile	1,678	1,766	1,969	2,100	2,050	2,050
China	2,306	1,156	1,157	1,080	1,285	1,285
Colombia	3,380	3,714	3,603	3,200	3,325	3,325
Cuba	501	646	836	750	800	800
Dominican Republic	1,068	1,212	1,074	900	1,000	1,000
Egypt	4,418	4,845	4,172	3,725	4,225	4,225
EU-27	2,883	8,738	19,892	2,930	3,080	3,080
Iran	3,000	3,600	3,900	4,400	3,900	3,900
Israel	1,588	1,684	1,776	1,350	1,725	1,725
Japan	19,765	19,668	19,210	19,485	19,285	19,285
Jordan	1,234	1,186	889	900	1,050	1,050
Korea, South	8,545	8,797	9,358	7,070	7,570	7,570
Libya	719	569	780	800	850	850
Malaysia	2,517	2,363	3,181	2,000	2,600	2,600
Mexico	9,930	11,040	11,011	9,550	9,950	9,950
Morocco	1,971	2,150	2,186	1,855	1,705	1,705
Peru	1,548	1,646	1,592	1,520	1,620	1,620
Saudi Arabia	8,572	7,577	9,961	9,000	9,300	9,300
Syria	2,006	2,079	2,511	3,000	2,900	2,900
Taiwan	4,735	4,402	4,653	4,410	4,100	4,400
Tunisia	1,230	1,519	1,183	1,300	1,100	1,100
Venezuela	152	534	1,103	800	900	900
Others	13,582	13,316	13,508	11,950	11,090	11,190
Subtotal	102,602	110,576	126,355	98,885	100,835	101,235
Unaccounted	3,585	1,414	-1,097	2,638	2,760	2,710
United States	2,295	2,605	3,663	2,928	2,825	2,825
World Total	108,482	114,595	128,921	104,451	106,420	106,770

TY=Trade Year, see Endnotes.

World Coarse Grains Production, Consumption, and Stocks
Local Marketing Years, Thousand Metric Tons

	2005/06	2006/07	2007/08	2008/09	2009/10 May	2009/10 Jun
Production						
Argentina	19,353	27,038	26,953	16,983	20,798	20,473
Australia	13,527	6,583	11,549	11,057	11,457	11,457
Brazil	44,167	53,184	61,344	52,554	56,514	56,514
Canada	24,939	23,145	27,822	27,190	25,010	24,310
China	147,696	159,098	159,105	172,800	169,200	169,200
Ethiopia	7,179	7,928	8,302	9,236	8,925	8,925
EU-27	146,267	137,421	136,140	161,000	151,883	148,059
India	34,040	33,810	40,630	37,470	39,500	39,500
Indonesia	6,800	7,850	8,500	8,700	9,000	9,000
Mexico	25,833	29,140	30,780	32,280	31,480	31,630
Nigeria	24,700	26,000	24,000	26,600	27,500	27,500
Russia	27,600	30,200	29,325	40,700	32,400	32,900
South Africa	7,311	7,760	13,695	12,508	11,968	11,968
Turkey	11,955	10,896	9,480	10,315	11,145	11,145
Ukraine	18,140	19,175	14,585	26,220	19,650	20,650
Others	120,604	126,668	125,083	126,108	132,026	132,070
Subtotal	680,111	705,896	727,293	771,721	758,456	755,301
United States	298,710	279,998	349,861	326,088	323,135	319,198
World Total	978,821	985,894	1,077,154	1,097,809	1,081,591	1,074,499
Domestic Consumption						
Argentina	9,473	9,523	9,978	9,233	9,773	9,773
Brazil	42,215	43,305	45,352	47,319	48,154	48,154
Canada	22,854	24,505	24,009	22,930	24,015	23,815
China	147,105	153,465	157,115	160,160	165,965	165,965
Egypt	11,163	11,801	11,477	11,283	11,685	11,685
EU-27	147,541	147,872	153,900	150,800	149,500	149,400
India	33,800	32,520	35,500	36,500	38,350	38,350
Japan	20,089	19,823	19,444	19,590	19,430	19,430
Mexico	37,587	39,925	40,430	41,810	42,050	42,200
Nigeria	24,450	25,750	24,000	26,450	27,550	27,550
Russia	27,700	28,600	28,875	32,750	32,350	32,450
Saudi Arabia	8,215	8,754	9,670	9,480	9,680	9,680
South Africa	8,763	9,158	9,796	10,433	10,633	10,633
Turkey	11,462	11,602	11,009	10,575	10,510	10,510
Ukraine	11,990	13,375	12,210	14,020	13,250	13,450
Others	180,689	184,528	188,248	189,165	191,755	192,345
Subtotal	747,609	768,747	781,600	794,569	807,294	807,984
United States	245,022	242,798	274,601	280,879	285,847	283,306
World Total	992,631	1,011,545	1,056,201	1,075,448	1,093,141	1,091,290
Ending Stocks						
Brazil	3,161	3,758	12,746	8,681	8,186	7,691
Canada	6,347	3,501	4,016	5,902	5,142	4,642
China	36,705	38,032	40,326	53,696	57,596	57,596
EU-27	22,265	15,129	13,002	20,532	20,490	16,766
Mexico	3,336	3,390	4,612	4,532	3,862	3,862
Russia	1,333	1,700	1,451	5,476	3,476	3,476
South Africa	2,448	1,773	3,640	3,445	2,985	2,985
Others	34,449	35,703	35,261	34,887	36,988	36,809
Subtotal	110,044	102,986	115,054	137,151	138,725	133,827
United States	54,767	36,174	45,059	45,323	33,231	31,856
World Total	164,811	139,160	160,113	182,474	171,956	165,683

Regional Coarse Grains Imports, Production, Consumption, and Stocks

Thousand Metric Tons

	2005/06	2006/07	2007/08	2008/09	May 2009/10	Jun 2009/10
TY Imports						
North America	14,254	15,930	17,875	14,178	15,245	15,245
Central America	2,803	2,906	2,681	2,725	2,900	2,900
Caribbean	1,969	2,227	2,264	2,000	2,150	2,150
South America	8,786	10,201	10,586	9,810	9,655	9,655
European Union	2,883	8,738	19,892	2,930	3,080	3,080
Other Europe	692	922	998	845	835	935
Former Soviet Union - 12	1,077	948	1,031	550	410	410
Middle East	17,832	18,673	21,697	20,270	20,475	20,475
North Africa	10,477	11,671	10,754	9,785	10,085	10,085
Sub-Saharan Africa	3,540	2,377	2,666	2,740	1,945	1,945
East Asia	35,605	34,134	34,631	32,295	32,490	32,790
South Asia	54	51	164	40	40	40
Southeast Asia	4,897	4,394	4,746	3,645	4,350	4,350
Oceania	28	9	33	0	0	0
Total	104,897	113,181	130,018	101,813	103,660	104,060
Production						
North America	349,482	332,283	408,463	385,558	379,625	375,138
Central America	2,949	3,080	3,344	3,387	3,457	3,457
Caribbean	784	771	785	785	785	785
South America	73,860	92,141	100,023	80,527	89,696	89,371
European Union	146,267	137,421	136,140	161,000	151,883	148,059
Other Europe	12,720	11,720	9,533	12,156	12,575	12,100
Former Soviet Union - 12	55,307	58,701	53,912	78,140	62,330	63,870
Middle East	19,998	19,060	17,381	15,933	17,877	17,877
North Africa	9,371	11,211	9,894	9,871	12,872	13,172
Sub-Saharan Africa	81,615	87,019	91,201	94,138	94,310	94,510
East Asia	149,899	161,399	161,295	174,975	171,454	171,383
South Asia	40,395	40,020	46,925	43,428	45,733	45,783
Southeast Asia	22,000	23,838	26,062	26,207	26,890	26,890
Oceania	14,174	7,230	12,196	11,704	12,104	12,104
Total	978,821	985,894	1,077,154	1,097,809	1,081,591	1,074,499
Domestic Consumption						
North America	305,463	307,228	339,040	345,619	351,912	349,321
Central America	5,560	5,975	6,031	6,175	6,375	6,375
Caribbean	2,784	2,886	3,043	2,883	2,883	2,883
South America	68,073	71,067	74,800	75,638	78,026	78,056
European Union	147,541	147,872	153,900	150,800	149,500	149,400
Other Europe	12,104	11,646	10,892	11,232	11,475	11,275
Former Soviet Union - 12	49,813	51,485	50,494	57,246	55,625	55,940
Middle East	37,168	37,401	37,945	37,171	37,751	37,751
North Africa	20,816	22,030	21,162	20,293	21,845	21,945
Sub-Saharan Africa	83,937	88,487	88,526	93,821	94,256	94,451
East Asia	182,811	188,962	191,916	194,004	199,439	199,639
South Asia	40,067	38,798	42,052	42,483	44,608	44,658
Southeast Asia	26,091	26,832	28,742	29,090	29,815	30,015
Oceania	7,890	6,635	7,071	6,922	6,987	6,987
Total	990,118	1,007,304	1,055,614	1,073,377	1,090,497	1,088,696
Ending Stocks						
North America	64,450	43,065	53,687	55,757	42,235	40,360
Central America	704	713	725	652	624	624
Caribbean	146	258	264	166	218	218
South America	7,807	9,087	18,327	13,526	13,176	12,681
European Union	22,265	15,129	13,002	20,532	20,490	16,766
Other Europe	1,493	1,559	1,047	1,453	1,928	1,903
Former Soviet Union - 12	5,305	5,053	4,213	9,342	6,917	6,687
Middle East	7,971	8,395	7,532	7,069	7,560	7,560
North Africa	2,686	3,183	2,437	2,048	3,110	3,360
Sub-Saharan Africa	4,912	5,179	6,815	6,657	5,968	6,001
East Asia	40,586	41,793	44,875	57,791	61,712	61,705
South Asia	1,401	1,455	1,584	1,924	2,064	2,064
Southeast Asia	2,102	2,648	3,283	2,828	3,018	2,818
Oceania	2,983	1,643	2,322	2,729	2,936	2,936
Total	164,811	139,160	160,113	182,474	171,956	165,683

Regional Coarse Grains Imports, Production, Consumption, and Stocks (Continued)

Thousand Metric Tons

	2005/06	2006/07	2007/08	2008/09	May 2009/10	Jun 2009/10
--	----------------	----------------	----------------	----------------	------------------------	------------------------

NOTES: Regional definitions appear on last page of this circular. Imports are reported on a trade year basis. All other data are reported using local marketing years.

World Corn Trade
October/September Year, Thousand Metric Tons

	2005/06	2006/07	2007/08	2008/09	2009/10 May	2009/10 Jun
TY Exports						
Argentina	10,707	15,693	15,676	7,000	8,000	8,000
Brazil	2,826	8,071	7,883	10,000	10,000	10,000
EU-27	449	664	591	2,000	2,000	2,000
India	497	582	5,077	400	1,000	1,000
Paraguay	1,314	1,981	1,461	1,000	1,000	1,000
Russia	53	77	49	1,300	1,000	1,000
Serbia	nr	854	128	1,000	1,200	1,200
South Africa	1,406	431	1,124	2,500	2,000	2,000
Thailand	121	442	646	500	750	750
Ukraine	2,464	1,027	2,074	5,200	2,500	3,000
Others	6,672	7,338	2,845	2,461	2,430	2,280
Subtotal	26,509	37,160	37,554	33,361	31,880	32,230
United States	56,084	54,214	60,757	44,500	49,000	49,000
World Total	82,593	91,374	98,311	77,861	80,880	81,230
TY Imports						
Algeria	2,061	2,463	2,166	1,900	2,100	2,100
Canada	1,962	2,226	3,117	1,600	2,400	2,400
Chile	1,599	1,508	1,628	1,800	1,700	1,700
Colombia	3,151	3,386	3,267	2,800	2,900	2,900
Costa Rica	687	672	674	600	700	700
Cuba	501	646	836	750	800	800
Dominican Republic	1,068	1,212	1,074	900	1,000	1,000
Egypt	4,397	4,826	4,151	3,700	4,200	4,200
EU-27	2,634	7,056	14,016	2,500	2,500	2,500
Guatemala	751	764	617	800	750	750
Iran	2,300	3,300	2,900	2,700	2,900	2,900
Israel	1,128	1,311	1,374	1,000	1,300	1,300
Japan	16,617	16,713	16,614	16,500	16,300	16,300
Korea, South	8,483	8,731	9,311	7,000	7,500	7,500
Libya	471	511	614	600	650	650
Malaysia	2,517	2,363	3,181	2,000	2,600	2,600
Mexico	6,787	8,944	9,556	7,000	7,500	7,500
Morocco	1,491	1,683	1,858	1,500	1,600	1,600
Peru	1,467	1,528	1,469	1,400	1,500	1,500
Saudi Arabia	1,472	1,577	1,961	1,700	1,800	1,800
Syria	1,256	1,729	1,611	1,800	1,900	1,900
Taiwan	4,533	4,283	4,527	4,300	4,000	4,300
Tunisia	624	653	805	600	800	800
Venezuela	152	534	1,103	800	900	900
Vietnam	475	650	700	600	700	700
Others	10,963	10,770	10,299	8,805	7,745	7,845
Subtotal	79,547	90,039	99,429	75,655	78,745	79,145
Unaccounted	2,836	1,016	-1,620	1,806	1,735	1,685
United States	210	319	502	400	400	400
World Total	82,593	91,374	98,311	77,861	80,880	81,230

TY=Trade Year, see Endnotes.

The large, negative Unaccounted in 2007/08 arises largely from timing differences between declared exports and Japan's and Korea's declared imports.

World Corn Production, Consumption, and Stocks
Local Marketing Years, Thousand Metric Tons

	2005/06	2006/07	2007/08	2008/09	2009/10 May	2009/10 Jun
Production						
Argentina	15,800	22,500	22,000	13,000	15,000	15,000
Brazil	41,700	51,000	58,600	50,000	54,000	54,000
Canada	9,332	8,990	11,649	10,600	10,300	10,300
China	139,365	151,600	152,300	165,500	162,500	162,500
Egypt	5,932	6,149	6,174	6,217	6,300	6,300
EU-27	60,668	53,829	47,506	62,380	56,902	56,502
India	14,710	15,100	18,960	17,000	18,500	18,500
Indonesia	6,800	7,850	8,500	8,700	9,000	9,000
Mexico	19,500	22,350	23,600	25,000	24,000	24,000
Nigeria	7,000	7,800	6,500	7,900	8,300	8,300
Philippines	5,884	6,231	7,277	6,900	6,900	6,900
Russia	3,200	3,600	3,950	6,600	7,000	7,000
Serbia	nr	6,415	4,054	5,900	6,500	6,500
South Africa	6,935	7,300	13,164	12,000	11,500	11,500
Ukraine	7,150	6,400	7,400	11,400	8,500	9,500
Others	72,525	67,586	68,792	70,785	72,837	72,491
Subtotal	416,501	444,700	460,426	479,882	478,039	478,293
United States	282,263	267,503	331,177	307,386	307,100	303,163
World Total	698,764	712,203	791,603	787,268	785,139	781,456
Total Consumption						
Argentina	6,200	6,700	7,000	6,700	5,900	5,900
Brazil	39,500	41,000	42,500	44,500	45,500	45,500
Canada	10,808	11,442	13,769	11,500	12,400	12,400
China	137,000	145,000	149,000	152,000	158,000	158,000
Egypt	10,100	10,700	10,400	10,200	10,600	10,600
EU-27	61,500	62,300	63,400	61,600	59,100	59,100
India	14,200	13,900	14,200	16,300	17,400	17,400
Indonesia	8,300	8,100	8,500	8,800	8,900	9,100
Japan	16,700	16,500	16,600	16,400	16,300	16,300
Korea, South	8,579	8,833	8,633	7,600	7,600	7,600
Mexico	27,900	30,700	32,000	32,200	32,200	32,200
Nigeria	6,800	7,600	6,550	7,800	8,400	8,400
Philippines	5,800	6,550	7,150	7,200	7,400	7,400
South Africa	8,200	8,600	9,200	9,800	10,000	10,000
Ukraine	5,100	5,250	5,750	6,250	6,350	6,550
Others	105,712	110,386	113,340	114,745	117,882	118,082
Subtotal	474,047	496,705	508,235	515,511	525,748	526,298
United States	232,015	230,674	261,671	263,918	270,777	268,237
World Total	706,062	727,379	769,906	779,429	796,525	794,535
Ending Stocks						
Brazil	3,015	3,592	12,579	8,579	8,079	7,579
Canada	2,001	1,337	1,457	1,657	1,557	1,557
China	35,255	36,602	39,394	52,694	56,744	56,744
EU-27	9,461	7,382	4,913	6,193	4,495	4,095
Korea, South	1,359	1,322	2,084	1,578	1,565	1,565
Mexico	2,707	3,084	4,131	3,831	3,081	3,081
South Africa	2,308	1,661	3,475	3,275	2,875	2,875
Others	18,104	20,908	21,411	20,079	20,703	20,266
Subtotal	74,210	75,888	89,444	97,886	99,099	97,762
United States	49,968	33,114	41,255	40,652	29,094	27,697
World Total	124,178	109,002	130,699	138,538	128,193	125,459

Regional Corn Imports, Production, Consumption, and Stocks

Thousand Metric Tons

	2005/06	2006/07	2007/08	2008/09	May 2009/10	Jun 2009/10
TY Imports						
North America	8,959	11,489	13,175	9,000	10,300	10,300
Central America	2,803	2,906	2,678	2,725	2,900	2,900
Caribbean	1,969	2,227	2,264	2,000	2,150	2,150
South America	8,158	9,141	9,459	8,540	8,365	8,365
European Union	2,634	7,056	14,016	2,500	2,500	2,500
Other Europe	410	575	541	505	500	600
Former Soviet Union - 12	649	501	648	320	185	185
Middle East	7,381	10,225	10,056	8,475	9,175	9,175
North Africa	9,044	10,136	9,594	8,300	9,350	9,350
Sub-Saharan Africa	2,855	1,806	1,844	1,925	1,255	1,255
East Asia	29,949	29,854	30,746	28,100	28,100	28,400
South Asia	33	48	162	40	40	40
Southeast Asia	4,890	4,385	4,715	3,625	4,325	4,325
Oceania	23	9	33	0	0	0
Total	79,757	90,358	99,931	76,055	79,145	79,545
Production						
North America	311,095	298,843	366,426	342,986	341,400	337,463
Central America	2,642	2,754	3,018	3,061	3,131	3,131
Caribbean	656	643	657	657	657	657
South America	65,826	83,335	90,357	71,736	79,240	79,240
European Union	60,668	53,829	47,506	62,380	56,902	56,502
Other Europe	10,333	9,350	7,239	9,735	10,160	9,685
Former Soviet Union - 12	13,289	12,849	13,790	21,315	18,815	19,815
Middle East	6,439	5,183	5,083	6,309	5,984	5,984
North Africa	6,134	6,351	6,376	6,419	6,502	6,502
Sub-Saharan Africa	38,359	41,481	46,778	47,089	47,328	47,528
East Asia	141,106	153,453	154,009	167,172	164,278	164,207
South Asia	19,920	20,115	23,980	21,870	23,520	23,520
Southeast Asia	21,745	23,605	25,825	25,967	26,650	26,650
Oceania	552	412	559	572	572	572
Total	698,764	712,203	791,603	787,268	785,139	781,456
Domestic Consumption						
North America	270,723	272,816	307,440	307,618	315,377	312,837
Central America	5,250	5,650	5,700	5,850	6,050	6,050
Caribbean	2,656	2,758	2,915	2,755	2,755	2,755
South America	59,649	63,272	66,112	67,205	68,405	68,405
European Union	61,500	62,300	63,400	61,600	59,100	59,100
Other Europe	9,426	8,995	8,117	8,502	8,755	8,555
Former Soviet Union - 12	11,908	12,144	12,898	14,955	15,540	15,740
Middle East	13,526	14,458	15,229	14,878	15,528	15,528
North Africa	14,871	16,061	15,664	15,200	15,900	15,900
Sub-Saharan Africa	40,416	43,043	43,222	46,170	46,839	47,039
East Asia	168,788	176,719	180,498	182,190	187,890	188,090
South Asia	19,319	18,982	19,474	21,195	22,445	22,445
Southeast Asia	25,837	26,597	28,499	28,850	29,575	29,775
Oceania	545	440	495	545	550	550
Total	704,414	724,235	769,663	777,513	794,709	792,769
Ending Stocks						
North America	54,676	37,535	46,843	46,140	33,732	32,335
Central America	687	695	709	635	606	606
Caribbean	146	258	264	166	218	218
South America	7,138	8,306	17,656	12,627	12,127	11,902
European Union	9,461	7,382	4,913	6,193	4,495	4,095
Other Europe	1,167	1,156	676	1,056	1,506	1,481
Former Soviet Union - 12	1,657	1,766	1,143	1,293	1,928	1,428
Middle East	2,739	3,452	3,426	3,317	2,938	2,938
North Africa	1,314	1,584	1,676	1,195	1,147	1,147
Sub-Saharan Africa	3,796	3,520	5,568	5,417	4,656	4,676
East Asia	38,328	39,745	43,378	56,210	60,234	60,227
South Asia	946	919	1,116	1,411	1,526	1,526
Southeast Asia	2,085	2,642	3,282	2,827	3,017	2,817
Oceania	38	42	49	51	63	63
Total	124,178	109,002	130,699	138,538	128,193	125,459

Regional Corn Imports, Production, Consumption, and Stocks (Continued)

Thousand Metric Tons

	2005/06	2006/07	2007/08	2008/09	May 2009/10	Jun 2009/10
--	----------------	----------------	----------------	----------------	------------------------	------------------------

NOTES: Regional definitions appear on last page of this circular. Imports are reported on a trade year basis. All other data are reported using local marketing years.

World Barley Trade
October/September Year, Thousand Metric Tons

	2005/06	2006/07	2007/08	2008/09	2009/10 May	2009/10 Jun
TY Exports						
Argentina	309	537	937	750	900	900
Australia	5,231	1,927	3,377	3,500	4,000	4,000
Canada	1,876	1,337	2,947	1,600	1,800	1,800
China	3	49	81	25	20	20
EU-27	2,587	4,366	3,888	3,500	3,200	3,200
Kazakhstan	239	606	806	450	600	600
Russia	1,397	1,691	1,277	2,800	1,600	1,600
Serbia	nr	9	4	5	5	5
Turkey	546	345	0	0	100	100
Ukraine	4,926	2,911	3,814	5,500	4,500	4,500
Uruguay	41	112	26	0	50	50
Others	5	185	450	50	0	0
Subtotal	17,160	14,075	17,607	18,180	16,775	16,775
United States	357	528	901	350	400	400
World Total	17,517	14,603	18,508	18,530	17,175	17,175
TY Imports						
Brazil	163	291	243	300	250	250
China	2,217	1,127	1,091	1,000	1,200	1,200
Colombia	198	243	256	225	250	250
EU-27	168	167	519	200	150	150
Iran	700	300	1,000	1,700	1,000	1,000
Israel	314	224	251	275	325	325
Japan	1,417	1,359	1,361	1,400	1,400	1,400
Jordan	811	804	528	600	700	700
Kuwait	203	217	254	200	200	200
Libya	248	58	166	200	200	200
Mexico	31	81	168	150	150	150
Saudi Arabia	7,100	6,000	8,000	7,300	7,500	7,500
Syria	750	350	900	1,200	1,000	1,000
Tunisia	606	866	378	700	300	300
United Arab Emirates	326	294	248	175	250	250
Others	1,638	1,744	1,897	1,765	1,265	1,265
Subtotal	16,890	14,125	17,260	17,390	16,140	16,140
Unaccounted	503	124	484	540	535	535
United States	124	354	764	600	500	500
World Total	17,517	14,603	18,508	18,530	17,175	17,175

TY=Trade Year, see Endnotes.

World Barley Production, Consumption, and Stocks
Local Marketing Years, Thousand Metric Tons

	2005/06	2006/07	2007/08	2008/09	2009/10 May	2009/10 Jun
Production						
Algeria	400	700	950	560	1,300	1,300
Argentina	800	1,265	1,470	1,600	1,925	1,600
Australia	9,483	4,257	7,191	7,000	7,500	7,500
Belarus	1,800	1,350	1,700	2,000	1,400	1,400
Canada	11,678	9,573	10,984	11,780	10,700	10,000
China	3,400	3,115	2,785	3,300	2,800	2,800
Ethiopia	1,271	1,352	1,355	1,484	1,300	1,300
EU-27	54,752	56,220	57,558	65,579	64,217	60,978
India	1,200	1,220	1,330	1,230	1,500	1,500
Iran	2,857	3,000	3,000	2,000	2,600	2,600
Kazakhstan	1,500	1,900	2,500	1,800	1,900	1,900
Morocco	1,102	2,535	763	1,272	3,400	3,700
Russia	15,800	18,100	15,650	23,100	16,000	16,500
Turkey	7,600	7,500	6,000	5,600	6,750	6,750
Ukraine	9,000	11,350	6,000	12,600	9,500	9,500
Others	8,986	9,112	9,246	7,811	8,582	8,672
Subtotal	131,629	132,549	128,482	148,716	141,374	138,000
United States	4,613	3,923	4,575	5,214	4,899	4,899
World Total	136,242	136,472	133,057	153,930	146,273	142,899
Total Consumption						
Australia	3,450	3,750	3,150	3,200	3,300	3,300
Belarus	2,000	1,650	1,750	1,950	1,575	1,575
Canada	9,611	10,190	7,916	8,950	9,300	9,100
China	5,400	4,200	3,900	4,200	4,100	4,100
EU-27	54,050	55,700	54,900	57,100	58,500	58,500
India	1,200	1,220	1,000	1,000	1,450	1,450
Iran	4,200	3,400	3,600	3,700	3,600	3,600
Japan	1,650	1,650	1,600	1,600	1,550	1,550
Kazakhstan	1,400	1,350	1,400	1,400	1,400	1,400
Morocco	2,525	2,500	1,900	1,600	2,600	2,700
Russia	15,500	16,400	15,050	17,100	16,800	16,900
Saudi Arabia	6,510	6,810	7,430	7,430	7,530	7,530
Syria	1,550	1,150	1,000	1,850	1,600	1,600
Turkey	7,300	7,300	6,500	5,900	5,900	5,900
Ukraine	4,900	6,500	5,300	5,800	5,300	5,300
Others	14,310	14,483	14,849	14,180	14,257	14,322
Subtotal	136,266	138,592	131,041	137,557	139,288	139,353
United States	4,570	4,596	4,376	5,116	5,226	5,225
World Total	140,836	143,188	135,417	142,673	144,514	144,578
Ending Stocks						
Australia	2,682	1,338	1,993	2,293	2,493	2,493
Canada	3,289	1,491	1,568	2,873	2,523	2,023
EU-27	8,535	5,824	5,018	10,197	12,864	9,625
Morocco	481	903	114	136	1,036	1,236
Russia	873	1,307	1,037	4,337	2,337	2,437
Saudi Arabia	2,568	2,458	2,428	2,298	2,268	2,268
Turkey	650	528	215	65	865	865
Others	6,555	5,918	5,049	6,012	5,902	5,802
Subtotal	25,633	19,767	17,422	28,211	30,288	26,749
United States	2,350	1,500	1,485	1,953	1,714	1,736
World Total	27,983	21,267	18,907	30,164	32,002	28,485

Regional Barley Imports, Production, Consumption, and Stocks

Thousand Metric Tons

	2005/06	2006/07	2007/08	2008/09	May 2009/10	Jun 2009/10
TY Imports						
North America	201	476	985	825	700	700
South America	516	747	709	765	700	700
European Union	168	167	519	200	150	150
Other Europe	162	220	207	185	180	180
Former Soviet Union - 12	357	425	378	230	225	225
Middle East	10,303	8,278	11,460	11,710	11,185	11,185
North Africa	1,392	1,521	1,144	1,475	725	725
Sub-Saharan Africa	81	51	103	100	75	75
East Asia	3,808	2,594	2,519	2,500	2,700	2,700
South Asia	21	0	0	0	0	0
Oceania	5	0	0	0	0	0
Total	17,014	14,479	18,024	17,990	16,640	16,640
Production						
North America	17,044	14,396	16,459	17,894	16,499	15,799
South America	1,827	2,287	2,560	2,620	3,025	2,700
European Union	54,752	56,220	57,558	65,579	64,217	60,978
Other Europe	1,589	1,577	1,494	1,621	1,615	1,615
Former Soviet Union - 12	29,450	33,951	27,067	40,860	30,220	30,760
Middle East	12,335	12,520	10,927	8,291	10,530	10,530
North Africa	2,212	3,835	2,493	2,427	5,345	5,645
Sub-Saharan Africa	1,638	1,738	1,733	1,824	1,640	1,640
East Asia	3,848	3,549	3,240	3,777	3,250	3,250
South Asia	1,664	1,742	1,935	1,637	2,032	2,082
Oceania	9,883	4,657	7,591	7,400	7,900	7,900
Total	136,242	136,472	133,057	153,930	146,273	142,899
Domestic Consumption						
North America	15,131	15,736	13,342	15,091	15,601	15,400
South America	2,120	2,227	2,387	2,425	2,540	2,540
European Union	54,050	55,700	54,900	57,100	58,500	58,500
Other Europe	1,761	1,723	1,720	1,780	1,765	1,765
Former Soviet Union - 12	25,227	27,195	24,879	27,656	26,500	26,615
Middle East	22,265	21,434	21,162	20,875	20,745	20,745
North Africa	4,880	4,931	4,452	4,058	4,910	5,010
Sub-Saharan Africa	1,691	1,792	1,796	1,924	1,735	1,735
East Asia	7,484	6,218	5,827	6,160	6,010	6,010
South Asia	1,667	1,743	1,606	1,407	1,982	2,032
Oceania	3,850	4,150	3,550	3,600	3,700	3,700
Total	140,126	142,849	135,621	142,076	143,988	144,052
Ending Stocks						
North America	5,712	3,080	3,150	4,948	4,334	3,856
South America	183	297	205	410	640	320
European Union	8,535	5,824	5,018	10,197	12,864	9,625
Other Europe	279	359	319	340	365	365
Former Soviet Union - 12	2,890	2,855	2,536	6,425	3,825	4,095
Middle East	5,196	4,904	4,068	3,714	4,584	4,584
North Africa	1,332	1,559	721	813	1,923	2,173
Sub-Saharan Africa	65	63	98	103	83	83
East Asia	1,005	881	732	824	744	744
South Asia	49	49	31	61	111	111
Oceania	2,737	1,396	2,029	2,329	2,529	2,529
Total	27,983	21,267	18,907	30,164	32,002	28,485

NOTES: Regional definitions appear on last page of this circular. Imports are reported on a trade year basis. All other data are reported using local marketing years.

World Sorghum Trade
October/September Year, Thousand Metric Tons

	2005/06	2006/07	2007/08	2008/09	2009/10 May	2009/10 Jun
TY Exports						
Argentina	226	959	1,172	500	800	800
Australia	190	25	340	1,050	800	800
Brazil	0	115	116	100	100	100
China	26	144	223	75	100	100
India	4	8	91	25	25	25
Nigeria	50	50	50	50	50	50
Sudan	2	52	200	200	100	100
Others	37	46	80	60	65	65
Subtotal	535	1,399	2,272	2,060	2,040	2,040
United States	4,961	4,380	6,686	3,300	3,600	3,600
World Total	5,496	5,779	8,958	5,360	5,640	5,640
TY Imports						
Chile	46	189	268	200	300	300
Colombia	5	67	66	150	150	150
Ecuador	0	0	0	60	50	50
Ethiopia	0	0	30	100	100	100
EU-27	77	1,474	5,267	200	400	400
Israel	44	78	144	50	75	75
Japan	1,393	1,276	1,084	1,350	1,350	1,350
Mexico	3,029	1,954	1,156	2,300	2,200	2,200
Niger	50	50	50	50	50	50
Sudan	211	300	300	300	300	300
Others	480	266	667	435	330	330
Subtotal	5,335	5,654	9,032	5,195	5,305	5,305
Unaccounted	161	123	-75	162	335	335
United States	0	2	1	3	0	0
World Total	5,496	5,779	8,958	5,360	5,640	5,640

TY=Trade Year, see Endnotes.

World Sorghum Production, Consumption, and Stocks
Local Marketing Years, Thousand Metric Tons

	2005/06	2006/07	2007/08	2008/09	2009/10 May	2009/10 Jun
Production						
Argentina	2,330	2,800	2,940	1,810	3,300	3,300
Australia	1,929	1,283	3,072	2,400	2,250	2,250
Brazil	1,543	1,500	2,000	1,840	1,800	1,800
Burkina	1,837	1,516	1,507	1,800	1,800	1,800
China	2,546	2,183	1,920	1,800	1,700	1,700
Egypt	900	900	900	900	900	900
Ethiopia	2,174	2,316	2,659	2,619	2,600	2,600
EU-27	489	542	522	535	564	564
India	7,630	7,150	7,930	7,240	7,500	7,500
Mexico	5,500	5,810	6,200	6,300	6,500	6,650
Niger	750	800	930	1,000	900	900
Nigeria	10,500	10,500	10,000	11,000	11,500	11,500
Sudan	4,275	5,200	4,500	4,700	4,700	4,700
Tanzania	890	850	900	900	900	900
Uganda	450	490	490	490	490	490
Others	4,168	4,400	4,153	4,692	4,483	4,483
Subtotal	47,911	48,240	50,623	50,026	51,887	52,037
United States	9,976	7,032	12,636	11,998	9,652	9,652
World Total	57,887	55,272	63,259	62,024	61,539	61,689
Total Consumption						
Argentina	2,300	1,700	1,800	1,310	2,500	2,500
Australia	1,895	1,205	2,155	1,605	1,505	1,505
Brazil	1,593	1,376	1,873	1,815	1,700	1,700
Burkina	1,837	1,516	1,507	1,800	1,800	1,800
China	2,300	2,050	2,100	1,735	1,640	1,640
Egypt	900	900	900	900	900	900
Ethiopia	2,100	2,300	2,600	2,700	2,700	2,700
EU-27	683	1,275	6,100	1,100	1,000	1,000
India	7,500	7,100	7,900	7,200	7,500	7,500
Japan	1,400	1,350	1,084	1,350	1,350	1,350
Mexico	8,600	8,100	7,200	8,400	8,600	8,750
Niger	750	825	1,025	1,050	950	950
Nigeria	10,450	10,450	9,950	10,950	11,450	11,450
Sudan	4,250	4,953	5,105	4,805	4,805	4,805
Tanzania	890	850	900	900	900	900
Others	5,166	5,431	5,744	5,984	5,797	5,822
Subtotal	52,738	52,033	58,123	53,213	55,338	55,513
United States	4,818	4,012	5,059	8,382	6,350	6,350
World Total	57,556	56,045	63,182	61,595	61,688	61,863
Ending Stocks						
Australia	23	16	133	178	173	173
China	935	928	537	537	512	512
Ethiopia	74	90	179	198	198	198
India	206	247	187	202	177	177
Mexico	553	217	373	573	673	673
Nigeria	200	200	200	200	200	200
Sudan	547	1,042	537	532	627	627
Others	972	851	996	834	711	774
Subtotal	3,510	3,591	3,142	3,254	3,271	3,334
United States	1,668	814	1,340	1,657	1,403	1,403
World Total	5,178	4,405	4,482	4,911	4,674	4,737

Regional Sorghum Imports, Production, Consumption, and Stocks

Thousand Metric Tons

	2005/06	2006/07	2007/08	2008/09	May 2009/10	Jun 2009/10
TY Imports						
North America	3,029	1,956	1,157	2,303	2,200	2,200
Central America	0	0	3	0	0	0
Caribbean	0	0	0	0	0	0
South America	72	280	388	475	560	560
European Union	77	1,474	5,267	200	400	400
Other Europe	0	0	132	25	25	25
Middle East	44	78	146	50	75	75
North Africa	35	0	10	0	0	0
Sub-Saharan Africa	586	507	701	690	590	590
East Asia	1,485	1,349	1,196	1,435	1,430	1,430
South Asia	0	3	2	0	0	0
Southeast Asia	7	9	31	20	25	25
Oceania	0	0	0	0	0	0
Total	5,335	5,656	9,033	5,198	5,305	5,305
Production						
North America	15,476	12,842	18,836	18,298	16,152	16,302
Central America	307	326	326	326	326	326
Caribbean	128	128	128	128	128	128
South America	4,794	5,122	5,664	4,699	5,952	5,952
European Union	489	542	522	535	564	564
Other Europe	0	0	0	0	0	0
Middle East	494	671	695	675	675	675
North Africa	915	915	915	915	915	915
Sub-Saharan Africa	22,923	23,894	23,023	24,783	25,152	25,152
East Asia	2,554	2,191	1,940	1,820	1,720	1,720
South Asia	7,783	7,305	8,081	7,385	7,645	7,645
Southeast Asia	95	53	57	60	60	60
Oceania	1,929	1,283	3,072	2,400	2,250	2,250
Total	57,887	55,272	63,259	62,024	61,539	61,689
Domestic Consumption						
North America	13,418	12,112	12,259	16,782	14,950	15,100
Central America	310	325	331	325	325	325
Caribbean	128	128	128	128	128	128
South America	4,874	4,171	4,877	4,536	5,602	5,632
European Union	683	1,275	6,100	1,100	1,000	1,000
Other Europe	0	0	132	25	25	25
Middle East	538	746	842	725	750	750
North Africa	950	915	925	915	915	915
Sub-Saharan Africa	23,105	23,731	23,831	25,260	25,467	25,462
East Asia	3,784	3,475	3,306	3,180	3,075	3,075
South Asia	7,653	7,255	8,053	7,345	7,645	7,645
Southeast Asia	94	55	63	60	60	60
Oceania	1,895	1,205	2,155	1,605	1,505	1,505
Total	57,432	55,393	63,002	61,986	61,447	61,622
Ending Stocks						
North America	2,221	1,031	1,713	2,230	2,076	2,076
Central America	17	18	16	17	18	18
Caribbean	0	0	0	0	0	0
South America	371	378	346	374	294	344
European Union	90	5	231	66	25	25
Other Europe	0	0	0	0	0	0
Middle East	36	39	38	38	38	38
North Africa	39	39	39	39	39	39
Sub-Saharan Africa	1,037	1,584	1,129	1,117	1,209	1,222
East Asia	1,121	1,042	649	649	624	624
South Asia	206	247	187	202	177	177
Southeast Asia	17	6	1	1	1	1
Oceania	23	16	133	178	173	173
Total	5,178	4,405	4,482	4,911	4,674	4,737

Regional Sorghum Imports, Production, Consumption, and Stocks (Continued)

Thousand Metric Tons

2005/06	2006/07	2007/08	2008/09	May 2009/10	Jun 2009/10
---------	---------	---------	---------	----------------	----------------

NOTES: Regional definitions appear on last page of this circular. Imports are reported on a trade year basis. All other data are reported using local marketing years.

World Oats Trade
October/September Year, Thousand Metric Tons

	2005/06	2006/07	2007/08	2008/09	2009/10 May	2009/10 Jun
TY Exports						
Argentina	1	2	1	5	5	5
Australia	191	41	174	100	150	150
Canada	1,754	1,921	2,321	1,900	1,900	1,900
Chile	27	41	17	25	25	25
EU-27	234	119	133	150	150	150
Kazakhstan	5	9	10	5	5	5
Ukraine	0	4	21	10	5	5
Others	2	8	14	5	0	0
Subtotal	2,214	2,145	2,691	2,200	2,240	2,240
United States	40	33	53	40	40	40
World Total	2,254	2,178	2,744	2,240	2,280	2,280
TY Imports						
Algeria	5	9	1	5	5	5
Bosnia and Herzegovina	7	4	3	5	5	5
Canada	21	18	17	25	15	15
China	18	9	13	20	20	20
Colombia	26	18	14	25	25	25
Ecuador	13	14	15	5	5	5
EU-27	2	5	2	5	5	5
Japan	59	62	68	60	60	60
Mexico	83	61	131	100	100	100
Morocco	1	5	5	5	5	5
Norway	51	59	47	50	50	50
South Africa	18	13	18	25	25	25
Switzerland	48	42	56	50	50	50
Turkey	0	3	12	5	5	5
Others	1	7	8	0	0	0
Subtotal	353	329	410	385	375	375
Unaccounted	70	55	90	55	105	105
United States	1,831	1,794	2,244	1,800	1,800	1,800
World Total	2,254	2,178	2,744	2,240	2,280	2,280

TY=Trade Year, see Endnotes.

World Oats Production, Consumption, and Stocks
Local Marketing Years, Thousand Metric Tons

	2005/06	2006/07	2007/08	2008/09	2009/10 May	2009/10 Jun
Production						
Algeria	80	80	80	80	80	80
Argentina	350	400	470	500	500	500
Australia	1,690	748	843	1,200	1,250	1,250
Belarus	600	550	600	900	600	600
Brazil	517	475	475	475	475	475
Canada	3,283	3,852	4,696	4,270	3,500	3,500
Chile	420	380	380	380	380	380
China	600	600	600	600	600	600
EU-27	7,968	7,768	8,618	8,962	8,505	8,390
Kazakhstan	140	140	160	160	160	160
Norway	360	360	360	360	360	360
Russia	4,550	4,900	5,400	5,800	5,000	5,000
Serbia	nr	120	120	120	120	120
Turkey	270	210	200	200	210	210
Ukraine	800	700	550	950	700	700
Others	546	443	417	417	424	424
Subtotal	22,174	21,726	23,969	25,374	22,864	22,749
United States	1,667	1,357	1,313	1,287	1,306	1,306
World Total	23,841	23,083	25,282	26,661	24,170	24,055
Total Consumption						
Argentina	350	400	455	500	500	500
Australia	1,480	710	740	1,040	1,100	1,100
Belarus	650	550	600	725	700	700
Brazil	515	475	475	475	475	475
Canada	1,966	2,283	1,933	2,050	1,900	1,900
Chile	400	350	350	350	350	350
China	620	615	615	625	625	625
EU-27	7,868	7,647	8,600	8,500	8,500	8,400
Kazakhstan	135	135	150	155	150	150
Mexico	137	175	180	185	175	175
Norway	410	420	410	410	410	410
Russia	4,600	4,900	5,400	5,400	5,200	5,200
Serbia	nr	120	121	120	120	120
Turkey	270	211	213	205	215	215
Ukraine	800	700	525	950	650	650
Others	730	619	590	595	602	602
Subtotal	20,976	20,247	21,671	22,162	21,685	21,585
United States	3,287	3,179	3,161	3,143	3,202	3,202
World Total	24,263	23,426	24,832	25,305	24,887	24,787
Ending Stocks						
Argentina	85	84	99	94	89	89
Australia	185	189	111	171	171	171
Belarus	25	25	25	200	100	100
Canada	872	556	950	1,295	1,010	1,010
China	107	101	99	94	89	89
EU-27	769	795	659	976	836	821
Russia	190	186	184	584	384	384
Others	135	118	142	129	191	191
Subtotal	2,368	2,054	2,269	3,543	2,870	2,855
United States	763	734	969	1,051	1,007	1,007
World Total	3,131	2,788	3,238	4,594	3,877	3,862

Regional Oats Imports, Production, Consumption, and Stocks

Thousand Metric Tons

	2005/06	2006/07	2007/08	2008/09	May 2009/10	Jun 2009/10
TY Imports						
North America	1,935	1,873	2,392	1,925	1,915	1,915
South America	40	33	30	30	30	30
European Union	2	5	2	5	5	5
Other Europe	106	105	108	105	105	105
Former Soviet Union - 12	0	6	5	0	0	0
Middle East	0	3	12	5	5	5
North Africa	6	14	6	10	10	10
Sub-Saharan Africa	18	13	18	25	25	25
East Asia	77	71	81	80	80	80
Oceania	0	0	0	0	0	0
Total	2,184	2,123	2,654	2,185	2,175	2,175
Production						
North America	5,030	5,289	6,089	5,637	4,886	4,886
South America	1,316	1,303	1,348	1,378	1,385	1,385
European Union	7,968	7,768	8,618	8,962	8,505	8,390
Other Europe	637	637	637	637	637	637
Former Soviet Union - 12	6,098	6,296	6,715	7,815	6,465	6,465
Middle East	270	210	200	200	210	210
North Africa	110	110	110	110	110	110
Sub-Saharan Africa	45	45	45	45	45	45
East Asia	602	602	602	602	602	602
Oceania	1,765	823	918	1,275	1,325	1,325
Total	23,841	23,083	25,282	26,661	24,170	24,055
Domestic Consumption						
North America	5,390	5,637	5,274	5,378	5,277	5,277
South America	1,333	1,303	1,330	1,378	1,385	1,385
European Union	7,868	7,647	8,600	8,500	8,500	8,400
Other Europe	739	752	745	737	742	742
Former Soviet Union - 12	6,193	6,291	6,680	7,235	6,705	6,705
Middle East	270	211	213	205	215	215
North Africa	115	123	121	120	120	120
Sub-Saharan Africa	75	60	55	70	70	70
East Asia	680	680	685	690	685	685
Oceania	1,555	785	815	1,115	1,175	1,175
Total	24,218	23,489	24,518	25,428	24,874	24,774
Ending Stocks						
North America	1,638	1,290	1,930	2,352	2,028	2,028
South America	115	106	120	115	115	115
European Union	769	795	659	976	836	821
Other Europe	46	44	52	57	57	57
Former Soviet Union - 12	251	246	242	807	557	557
Middle East	0	0	0	0	0	0
North Africa	1	1	1	1	1	1
Sub-Saharan Africa	14	12	20	20	20	20
East Asia	112	105	103	95	92	92
Oceania	185	189	111	171	171	171
Total	3,131	2,788	3,238	4,594	3,877	3,862

NOTES: Regional definitions appear on last page of this circular. Imports are reported on a trade year basis. All other data are reported using local marketing years.

World Rye Trade
October/September Year, Thousand Metric Tons

	2005/06	2006/07	2007/08	2008/09	2009/10 May	2009/10 Jun
TY Exports						
Belarus	50	75	75	175	100	100
Canada	141	207	167	75	125	125
EU-27	381	313	59	150	150	150
Russia	0	64	86	25	50	50
Ukraine	49	0	0	25	10	10
Others	0	0	3	0	0	0
Subtotal	621	659	390	450	435	435
United States	1	2	10	10	10	10
World Total	622	661	400	460	445	445
TY Imports						
Canada	0	0	14	0	5	5
EU-27	2	36	88	25	25	25
Israel	102	71	7	25	25	25
Japan	279	258	83	175	175	175
Korea, South	7	8	6	5	5	5
Norway	4	16	4	20	20	20
Switzerland	9	4	4	5	5	5
Turkey	2	18	16	5	10	10
Others	72	18	2	0	0	0
Subtotal	477	429	224	260	270	270
Unaccounted	15	96	24	75	50	50
United States	130	136	152	125	125	125
World Total	622	661	400	460	445	445

TY=Trade Year, see Endnotes.

World Rye Production, Consumption, and Stocks
Local Marketing Years, Thousand Metric Tons

	2005/06	2006/07	2007/08	2008/09	2009/10 May	2009/10 Jun
Production						
Argentina	55	55	55	55	55	55
Belarus	1,150	1,200	1,300	1,600	1,400	1,400
Canada	330	383	233	320	280	280
EU-27	7,688	6,541	7,685	9,146	8,616	8,546
Russia	3,600	3,000	3,900	4,500	4,000	4,000
Turkey	270	271	265	250	270	270
Ukraine	1,050	600	550	1,050	800	800
Others	188	180	187	187	187	187
Subtotal	14,331	12,230	14,175	17,108	15,608	15,538
United States	191	183	160	203	178	178
World Total	14,522	12,413	14,335	17,311	15,786	15,716
Total Consumption						
Argentina	55	55	55	55	55	55
Belarus	1,150	1,150	1,150	1,350	1,400	1,400
Canada	153	243	131	210	185	185
EU-27	8,620	7,400	7,200	8,500	8,900	8,900
Japan	279	258	90	175	170	170
Kazakhstan	50	50	47	50	50	50
Norway	41	53	44	57	57	57
Russia	3,600	3,100	3,750	4,250	4,050	4,050
Turkey	277	276	281	255	280	280
Ukraine	1,050	800	550	800	800	800
Others	238	176	121	135	135	135
Subtotal	15,499	13,730	13,473	15,909	16,130	16,130
United States	332	337	334	320	292	292
World Total	15,831	14,067	13,807	16,229	16,422	16,422
Ending Stocks						
Belarus	114	89	164	239	139	139
Canada	185	117	41	77	52	52
EU-27	1,874	616	1,123	1,644	1,235	1,165
Japan	20	20	13	13	18	18
Russia	126	32	63	288	188	188
Ukraine	267	65	65	290	280	280
Others	1	0	0	0	0	0
Subtotal	2,587	939	1,469	2,551	1,912	1,842
United States	18	12	10	10	13	13
World Total	2,605	951	1,479	2,561	1,925	1,855

Regional Rye Imports, Production, Consumption, and Stocks

Thousand Metric Tons

	2005/06	2006/07	2007/08	2008/09	May 2009/10	Jun 2009/10
TY Imports						
North America	130	136	166	125	130	130
South America	0	0	0	0	0	0
European Union	2	36	88	25	25	25
Other Europe	14	22	10	25	25	25
Former Soviet Union - 12	71	16	0	0	0	0
Middle East	104	89	23	30	35	35
Sub-Saharan Africa	0	0	0	0	0	0
East Asia	286	266	89	180	180	180
Oceania	0	0	0	0	0	0
Total	607	565	376	385	395	395
Production						
North America	521	566	393	523	458	458
South America	64	61	61	61	61	61
European Union	7,688	6,541	7,685	9,146	8,616	8,546
Other Europe	106	101	108	108	108	108
Former Soviet Union - 12	5,850	4,850	5,800	7,200	6,250	6,250
Middle East	270	271	265	250	270	270
Sub-Saharan Africa	3	3	3	3	3	3
East Asia	0	0	0	0	0	0
Oceania	20	20	20	20	20	20
Total	14,522	12,413	14,335	17,311	15,786	15,716
Domestic Consumption						
North America	485	580	465	530	477	477
South America	64	61	61	61	61	61
European Union	8,620	7,400	7,200	8,500	8,900	8,900
Other Europe	123	121	123	133	133	133
Former Soviet Union - 12	5,865	5,100	5,497	6,450	6,300	6,300
Middle East	379	347	288	280	305	305
Sub-Saharan Africa	3	3	3	3	3	3
East Asia	286	266	96	180	175	175
Oceania	20	20	20	20	20	20
Total	15,845	13,898	13,753	16,157	16,374	16,374
Ending Stocks						
North America	203	129	51	87	65	65
South America	0	0	0	0	0	0
European Union	1,874	616	1,123	1,644	1,235	1,165
Other Europe	1	0	0	0	0	0
Former Soviet Union - 12	507	186	292	817	607	607
Middle East	0	0	0	0	0	0
Sub-Saharan Africa	0	0	0	0	0	0
East Asia	20	20	13	13	18	18
Oceania	0	0	0	0	0	0
Total	2,605	951	1,479	2,561	1,925	1,855

NOTES: Regional definitions appear on last page of this circular. Imports are reported on a trade year basis. All other data are reported using local marketing years.



HISTORICAL DATA SERIES FOR SELECTED REGIONS AND COUNTRIES

CONTENTS

European Union: Grain Supply and Demand	38
China: Grain Supply and Demand	39
Other Europe: Grain Supply and Demand	40
Former Soviet Union: Grain Supply and Demand.....	41
Wheat Supply and Disappearance: Selected Exporters	45
Corn Supply and Disappearance: Selected Exporters.....	47
Barley Supply and Disappearance: Selected Exporters	49
Sorghum Supply and Disappearance: Selected Exporters	50
U.S. Grains: Supply and Distribution	51
Total Wheat and Coarse Grains: Supply and Demand	52
World Wheat and Coarse Grains: Supply and Demand	53
World Corn and Barley: Supply and Demand	54
World Rice: Supply and Demand	55

European Union: Grain Supply and Demand

Wheat and Coarse Grains Millions of Metric Tons/Hectares

	Area Harvested	Yield	Production	Imports	Exports	Feed Dom. Consumpti	Domestic Consumpti	Ending Stocks
Wheat								
1999/00	24.6	5.0	122.4	4.0	20.4	52.8	113.2	16.3
2000/01	26.5	5.0	131.7	3.5	15.7	56.3	118.4	17.5
2001/02	25.9	4.8	123.4	8.7	12.8	56.5	118.5	18.3
2002/03	26.4	5.0	132.6	10.7	18.1	60.0	125.0	18.5
2003/04	24.3	4.5	110.6	7.4	9.8	52.4	115.1	11.5
2004/05	26.0	5.7	146.9	7.1	14.7	59.2	123.2	27.5
2005/06	25.8	5.1	132.4	6.8	15.7	63.0	127.5	23.4
2006/07	24.5	5.1	124.9	5.1	13.8	60.2	125.5	14.1
2007/08	24.8	4.9	120.2	6.9	12.3	52.4	116.5	12.4
2008/09	26.9	5.6	151.6	6.5	22.5	61.0	127.5	20.5
2009/10	25.9	5.3	136.0	6.5	18.0	60.0	127.5	17.4
Coarse Grains								
1999/00	33.6	4.4	147.9	2.9	13.4	105.8	140.1	22.9
2000/01	33.0	4.2	139.9	4.1	9.3	105.1	139.3	18.3
2001/02	33.6	4.5	150.2	3.9	6.7	107.8	143.6	22.3
2002/03	32.7	4.5	148.3	4.4	7.6	109.3	144.9	22.5
2003/04	32.7	4.0	131.7	8.2	4.2	109.6	145.2	13.0
2004/05	33.5	5.0	166.6	3.0	4.9	116.5	152.6	25.1
2005/06	32.6	4.5	146.3	2.8	4.4	109.4	147.5	22.3
2006/07	31.8	4.3	137.4	8.0	4.7	110.2	147.9	15.1
2007/08	32.0	4.3	136.1	20.3	4.6	118.3	153.9	13.0
2008/09	33.3	4.8	161.0	3.1	5.8	112.2	150.8	20.5
2009/10	32.2	4.6	148.1	3.1	5.5	110.2	149.4	16.8
Wheat and Coarse Grains								
1999/00	58.2	4.6	270.4	6.8	33.8	158.6	253.4	39.2
2000/01	59.5	4.6	271.6	7.6	24.9	161.5	257.7	35.8
2001/02	59.5	4.6	273.6	12.7	19.4	164.3	262.0	40.6
2002/03	59.2	4.7	280.9	15.0	25.7	169.3	269.9	41.0
2003/04	57.0	4.3	242.3	15.6	14.0	162.1	260.3	24.5
2004/05	59.5	5.3	313.5	10.1	19.6	175.7	275.8	52.6
2005/06	58.4	4.8	278.6	9.5	20.1	172.4	275.1	45.6
2006/07	56.3	4.7	262.3	13.1	18.5	170.4	273.4	29.2
2007/08	56.8	4.5	256.3	27.2	16.9	170.7	270.4	25.4
2008/09	60.3	5.2	312.6	9.6	28.3	173.2	278.3	41.0
2009/10	58.0	4.9	284.0	9.6	23.5	170.2	276.9	34.2

China: Grain Supply and Demand

Wheat and Coarse Grains Millions of Metric Tons/Hectares

	Area Harvested	Yield	Production	Imports	Exports	Feed Dom. Consumpti	Domestic Consumpti	Ending Stocks
Wheat								
1998/99	29.8	3.7	109.7	0.8	0.5	5.0	108.3	97.9
1999/00	28.9	3.9	113.9	1.0	0.5	6.5	109.3	102.9
2000/01	26.7	3.7	99.6	0.2	0.6	10.0	110.3	91.9
2001/02	24.6	3.8	93.9	1.1	1.5	9.0	108.7	76.6
2002/03	23.9	3.8	90.3	0.4	1.7	6.5	105.2	60.4
2003/04	22.0	3.9	86.5	3.7	2.8	6.0	104.5	43.3
2004/05	21.6	4.3	92.0	6.7	1.2	4.0	102.0	38.8
2005/06	22.8	4.3	97.4	1.0	1.4	3.5	101.5	34.4
2006/07	23.6	4.6	108.5	0.4	2.8	4.0	102.0	38.5
2007/08	23.7	4.6	109.3	0.1	2.8	8.0	106.0	39.0
2008/09	24.0	4.7	112.5	0.2	0.8	5.0	102.5	48.4
2009/10	24.2	4.7	113.5	0.3	1.5	4.0	101.0	59.7
Coarse Grains								
1998/99	29.1	4.9	143.5	2.6	3.4	91.4	127.3	123.4
1999/00	29.6	4.6	137.2	2.3	10.0	92.7	128.8	124.2
2000/01	26.5	4.3	114.0	2.4	7.3	94.4	130.4	102.8
2001/02	27.5	4.4	122.2	2.0	8.6	96.2	132.9	85.6
2002/03	28.0	4.7	130.7	1.8	15.3	98.4	136.3	66.5
2003/04	27.1	4.6	124.0	1.5	7.7	99.1	138.3	45.9
2004/05	28.2	4.9	138.3	2.1	7.6	100.3	141.1	37.6
2005/06	29.1	5.1	147.7	2.3	3.8	103.2	147.1	36.7
2006/07	31.4	5.1	159.1	1.2	5.5	105.0	153.5	38.0
2007/08	32.2	4.9	159.1	1.2	0.9	105.8	157.1	40.3
2008/09	32.1	5.4	172.8	1.1	0.4	110.8	160.2	53.7
2009/10	32.0	5.3	169.2	1.3	0.6	115.6	166.0	57.6
Wheat and Coarse Grains								
1998/99	58.8	4.3	253.2	3.4	3.9	96.4	235.6	221.3
1999/00	58.4	4.3	251.1	3.4	10.5	99.2	238.1	227.1
2000/01	53.1	4.0	213.6	2.6	7.9	104.4	240.7	194.7
2001/02	52.1	4.1	216.1	3.1	10.1	105.2	241.6	162.1
2002/03	51.9	4.3	221.0	2.2	17.1	104.9	241.5	126.8
2003/04	49.1	4.3	210.4	5.3	10.5	105.1	242.8	89.2
2004/05	49.8	4.6	230.2	8.8	8.8	104.3	243.1	76.4
2005/06	51.9	4.7	245.1	3.3	5.2	106.7	248.6	71.1
2006/07	55.0	4.9	267.6	1.5	8.2	109.0	255.5	76.5
2007/08	55.9	4.8	268.4	1.2	3.7	113.8	263.1	79.3
2008/09	56.1	5.1	285.3	1.3	1.1	115.8	262.7	102.1
2009/10	56.2	5.0	282.7	1.6	2.1	119.6	267.0	117.3

Other Europe: Grain Supply and Demand

Wheat and Coarse Grains Millions of Metric Tons/Hectares

	Area Harvested	Yield	Production	Imports	Exports	Feed Dom. Consumpti	Domestic Consumpti	Ending Stocks
Wheat								
1998/99	1.6	3.9	6.0	1.0	0.1	0.6	6.6	1.5
1999/00	1.3	3.3	4.2	1.5	0.1	0.7	5.7	1.3
2000/01	1.4	3.3	4.6	1.2	0.3	0.7	5.5	1.4
2001/02	1.4	3.4	4.9	1.8	0.6	0.9	5.9	1.5
2002/03	1.4	3.5	4.9	1.4	0.6	0.9	5.7	1.4
2003/04	1.2	3.1	3.9	1.5	0.1	0.7	5.5	1.2
2004/05	1.4	4.0	5.4	1.5	0.3	1.0	6.0	1.8
2005/06	1.1	3.6	4.2	1.5	0.2	0.9	5.9	1.3
2006/07	1.2	3.6	4.3	1.5	0.6	0.7	5.5	1.1
2007/08	1.2	3.7	4.4	1.9	0.8	0.8	5.6	1.1
2008/09	1.1	4.1	4.6	1.7	0.4	0.8	5.6	1.4
2009/10	1.2	3.9	4.8	1.7	0.6	0.9	5.8	1.5
Coarse Grains								
1998/99	2.8	3.9	11.2	0.4	0.3	10.2	11.6	0.9
1999/00	2.8	4.4	12.2	0.6	0.3	11.2	12.5	0.9
2000/01	2.6	3.1	8.1	1.0	0.0	7.7	9.0	1.0
2001/02	2.7	4.1	10.9	0.8	0.2	9.8	11.1	1.4
2002/03	2.7	4.4	11.7	0.6	0.6	9.9	11.4	1.8
2003/04	2.7	3.5	9.2	0.8	0.1	9.5	10.8	1.1
2004/05	2.7	4.8	12.8	0.6	0.6	10.8	12.1	1.6
2005/06	2.7	4.8	12.7	0.7	1.4	10.7	12.1	1.5
2006/07	2.5	4.7	11.7	0.9	0.9	10.4	11.6	1.6
2007/08	2.6	3.6	9.5	1.0	0.1	9.6	10.9	1.0
2008/09	2.7	4.5	12.2	0.8	1.4	9.9	11.2	1.5
2009/10	2.6	4.6	12.1	0.9	1.3	9.9	11.3	1.9
Wheat and Coarse Grains								
1998/99	4.4	3.9	17.2	1.4	0.4	10.8	18.2	2.4
1999/00	4.0	4.1	16.4	2.1	0.3	11.9	18.2	2.3
2000/01	4.0	3.2	12.7	2.2	0.3	8.4	14.5	2.3
2001/02	4.1	3.9	15.8	2.6	0.8	10.7	17.0	2.9
2002/03	4.1	4.1	16.6	2.0	1.2	10.8	17.0	3.3
2003/04	3.9	3.4	13.1	2.3	0.2	10.2	16.3	2.2
2004/05	4.0	4.5	18.2	2.0	0.9	11.7	18.2	3.4
2005/06	3.8	4.5	16.9	2.1	1.6	11.6	18.0	2.8
2006/07	3.7	4.3	16.1	2.4	1.5	11.0	17.1	2.7
2007/08	3.8	3.7	13.9	2.9	0.9	10.4	16.5	2.2
2008/09	3.8	4.4	16.8	2.5	1.8	10.7	16.8	2.9
2009/10	3.9	4.3	16.9	2.6	1.9	10.7	17.1	3.4

Former Soviet Union: Grain Supply and Demand

Wheat and Coarse Grains Millions of Metric Tons/Hectares

	Area Harvested	Yield	Production	Imports	Exports	Feed Dom. Consumpti	Domestic Consumpti	Ending Stocks
Wheat								
2003/04	40.3	1.5	59.9	7.1	7.9	17.6	65.3	10.0
2004/05	46.5	1.8	85.6	4.9	16.1	21.1	72.2	12.2
2005/06	48.5	1.9	90.9	5.5	21.0	23.5	75.0	12.6
2006/07	45.9	1.8	85.0	6.0	22.3	21.6	72.6	8.6
2007/08	47.5	2.0	92.7	6.0	22.2	23.6	75.6	9.5
2008/09	51.1	2.3	115.5	6.7	36.0	25.5	78.2	17.5
2009/10	52.2	2.0	104.4	5.4	29.9	25.7	78.7	18.7
Coarse Grains								
2003/04	31.2	1.8	55.4	1.5	6.1	39.4	56.8	6.0
2004/05	31.2	2.0	63.0	1.1	8.1	38.1	54.7	7.3
2005/06	28.4	1.9	55.3	1.1	8.6	33.7	49.8	5.3
2006/07	29.8	2.0	58.7	1.0	8.5	35.7	51.5	5.1
2007/08	29.4	1.8	53.9	1.0	5.3	34.8	50.5	4.2
2008/09	30.3	2.6	78.1	0.6	16.3	40.4	57.2	9.3
2009/10	30.3	2.1	63.9	0.4	11.0	39.5	55.9	6.7

Former Soviet Union: Grain Supply and Demand (Wheat)

Millions of Tons/Hectares

Country Mktg Year	Area Harvested	Yield	Production	MY Imports	MY Exports	Feed Consumpti	Total Consumpti	Ending Stocks
Former Soviet Union - 12								
Kazakhstan								
2006/07	12.4	1.1	13.5	0.0	8.1	2.7	7.5	1.0
2007/08	12.8	1.3	16.6	0.0	8.2	2.7	7.5	1.9
2008/09	12.9	1.0	12.5	0.1	5.0	2.7	7.5	2.0
2009/10	13.5	1.0	14.0	0.1	6.5	2.7	7.5	2.1
Russia								
2006/07	23.7	1.9	44.9	0.9	10.6	14.1	36.4	2.2
2007/08	24.5	2.0	49.4	0.4	12.6	15.1	37.7	1.8
2008/09	26.7	2.4	63.7	0.2	18.0	16.0	38.7	9.0
2009/10	27.4	2.2	59.0	0.3	18.0	17.0	40.0	10.3
Ukraine								
2006/07	5.5	2.5	14.0	0.1	3.4	2.1	11.7	1.4
2007/08	6.0	2.3	13.9	0.3	1.2	3.1	12.9	1.5
2008/09	7.1	3.7	25.9	0.1	12.5	3.8	13.8	1.2
2009/10	6.6	2.7	18.0	0.1	5.0	3.0	12.8	1.5
Uzbekistan								
2006/07	1.3	4.5	5.9	1.1	0.2	1.1	6.5	1.2
2007/08	1.3	4.8	6.2	1.0	0.2	1.2	6.8	1.4
2008/09	1.4	4.4	6.0	1.4	0.2	1.3	7.1	1.6
2009/10	1.4	4.4	6.2	1.0	0.2	1.3	7.1	1.5
Other Former Soviet Union - 12								
2006/07	3.0	2.2	6.7	3.9	0.1	1.6	10.5	2.8
2007/08	3.0	2.2	6.6	4.2	0.0	1.6	10.7	2.9
2008/09	3.1	2.4	7.4	5.0	0.3	1.8	11.2	3.8
2009/10	3.3	2.2	7.2	4.0	0.2	1.7	11.3	3.5
Total Former Soviet Union - 12								
2006/07	45.9	1.8	85.0	6.0	22.3	21.6	72.6	8.6
2007/08	47.5	2.0	92.7	6.0	22.2	23.6	75.6	9.5
2008/09	51.1	2.3	115.5	6.7	36.0	25.5	78.2	17.5
2009/10	52.2	2.0	104.4	5.4	29.9	25.7	78.7	18.7

Former Soviet Union: Grain Supply and Demand (Barley)

Millions of Tons/Hectares

Country Mktg Year	Area Harvested	Yield	Production	MY Imports	MY Exports	Feed Consumpti	Total Consumpti	Ending Stocks
Former Soviet Union - 12								
Kazakhstan								
2006/07	1.8	1.1	1.9	0.1	0.6	1.3	1.4	0.2
2007/08	1.8	1.4	2.5	0.0	0.8	1.3	1.4	0.6
2008/09	1.8	1.0	1.8	0.1	0.5	1.3	1.4	0.6
2009/10	1.8	1.1	1.9	0.0	0.6	1.3	1.4	0.5
Russia								
2006/07	10.0	1.8	18.1	0.3	1.5	11.8	16.4	1.3
2007/08	9.8	1.6	15.7	0.2	1.0	10.5	15.1	1.0
2008/09	9.7	2.4	23.1	0.1	2.8	12.3	17.1	4.3
2009/10	9.4	1.8	16.5	0.1	1.6	12.1	16.9	2.4
Ukraine								
2006/07	5.2	2.2	11.4	0.0	5.1	4.8	6.5	1.0
2007/08	4.1	1.5	6.0	0.0	1.0	3.6	5.3	0.6
2008/09	4.2	3.0	12.6	0.0	6.3	4.1	5.8	1.1
2009/10	4.7	2.0	9.5	0.0	4.5	3.6	5.3	0.8
Uzbekistan								
2006/07	0.1	3.2	0.2	0.0	0.0	0.2	0.3	0.0
2007/08	0.1	3.2	0.2	0.0	0.0	0.2	0.3	0.0
2008/09	0.1	3.2	0.2	0.0	0.0	0.2	0.3	0.0
2009/10	0.1	3.2	0.2	0.0	0.0	0.2	0.3	0.0
Other Former Soviet Union - 12								
2006/07	1.1	2.1	2.4	0.1	0.0	1.8	2.7	0.4
2007/08	1.3	2.1	2.7	0.1	0.0	2.0	2.9	0.3
2008/09	1.2	2.7	3.1	0.1	0.0	2.3	3.1	0.4
2009/10	1.1	2.3	2.6	0.1	0.0	1.9	2.8	0.3
Total Former Soviet Union - 12								
2006/07	18.2	1.9	34.0	0.5	7.3	19.9	27.2	2.9
2007/08	17.0	1.6	27.1	0.4	2.9	17.5	24.9	2.5
2008/09	16.9	2.4	40.9	0.2	9.6	20.2	27.7	6.4
2009/10	17.1	1.8	30.8	0.2	6.7	19.1	26.6	4.1

Former Soviet Union: Grain Supply and Demand (Corn)

Millions of Tons/Hectares

Country Mktg Year	Area Harvested	Yield	Production	MY Imports	MY Exports	Feed Consumpti	Total Consumpti	Ending Stocks
Former Soviet Union - 12								
Kazakhstan								
2006/07	0.1	3.2	0.3	0.0	0.0	0.2	0.3	0.0
2007/08	0.1	3.1	0.3	0.0	0.0	0.2	0.3	0.0
2008/09	0.1	3.1	0.3	0.0	0.0	0.2	0.3	0.0
2009/10	0.1	3.1	0.3	0.0	0.0	0.2	0.3	0.0
Russia								
2006/07	1.0	3.6	3.6	0.1	0.1	3.1	3.6	0.2
2007/08	1.3	3.0	4.0	0.3	0.0	3.7	4.3	0.2
2008/09	1.7	4.0	6.6	0.1	1.3	4.6	5.3	0.3
2009/10	1.8	3.9	7.0	0.1	1.0	5.2	5.9	0.5
Ukraine								
2006/07	1.7	3.8	6.4	0.0	1.0	4.5	5.3	1.1
2007/08	1.9	3.9	7.4	0.0	2.1	5.0	5.8	0.7
2008/09	2.4	4.8	11.4	0.0	5.2	5.5	6.3	0.6
2009/10	2.2	4.3	9.5	0.0	3.0	5.8	6.6	0.6
Uzbekistan								
2006/07	0.0	4.6	0.2	0.0	0.0	0.2	0.2	0.0
2007/08	0.0	4.6	0.2	0.0	0.0	0.1	0.2	0.0
2008/09	0.0	4.6	0.2	0.0	0.0	0.1	0.2	0.0
2009/10	0.0	4.6	0.2	0.0	0.0	0.1	0.2	0.0
Other Former Soviet Union - 12								
2006/07	0.7	3.4	2.4	0.4	0.0	2.6	2.8	0.5
2007/08	0.8	2.6	2.0	0.2	0.0	2.2	2.5	0.3
2008/09	0.8	3.6	2.9	0.2	0.0	2.6	3.0	0.4
2009/10	0.8	3.5	2.9	0.1	0.1	2.5	2.9	0.4
Total Former Soviet Union - 12								
2006/07	3.5	3.6	12.8	0.5	1.1	10.5	12.1	1.8
2007/08	4.1	3.4	13.8	0.6	2.1	11.2	12.9	1.1
2008/09	5.0	4.3	21.3	0.3	6.5	13.1	15.0	1.3
2009/10	5.0	4.0	19.8	0.2	4.1	13.9	15.7	1.4

Wheat Supply and Disappearance: Selected Exporters
Million Metric Tons/Hectares

Country Mktg Year	Area Harvested	Yield	Production	MY Imports	MY Exports	Feed Consumpti	Total Consumpti	Ending Stocks
Wheat Competitors								
Argentina								
2001/02	6.8	2.3	15.5	0.0	10.1	0.1	4.9	1.1
2002/03	5.9	2.1	12.3	0.0	6.8	0.1	5.2	1.5
2003/04	5.7	2.5	14.5	0.0	9.4	0.1	5.2	1.4
2004/05	6.1	2.6	16.0	0.0	11.7	0.1	5.0	0.6
2005/06	5.0	2.9	14.5	0.0	9.5	0.1	5.0	0.7
2006/07	5.3	3.0	16.0	0.0	10.7	0.1	4.9	1.1
2007/08	5.8	2.9	16.8	0.0	11.2	0.1	5.1	1.5
2008/09	4.2	2.0	8.4	0.0	4.5	0.1	5.1	0.4
2009/10	4.0	2.8	11.0	0.0	5.5	0.1	5.2	0.7
Australia								
2001/02	11.6	2.1	24.3	0.1	16.4	2.7	5.4	8.0
2002/03	11.1	0.9	10.1	0.3	9.1	3.4	6.1	3.2
2003/04	13.1	2.0	26.1	0.1	18.0	3.2	5.9	5.4
2004/05	13.4	1.6	21.9	0.1	14.7	3.2	5.9	6.8
2005/06	12.5	2.0	25.2	0.1	16.0	3.7	6.4	9.6
2006/07	11.8	0.9	10.8	0.1	8.7	4.7	7.4	4.4
2007/08	12.7	1.1	13.8	0.1	7.5	3.5	6.2	4.7
2008/09	13.5	1.6	21.5	0.1	14.0	3.8	6.8	5.5
2009/10	13.0	1.8	23.0	0.1	15.5	4.0	7.1	6.0
Canada								
2001/02	10.6	1.9	20.6	0.3	16.3	3.6	7.7	6.5
2002/03	8.8	1.8	16.2	0.4	9.4	3.7	8.0	5.7
2003/04	10.2	2.3	23.0	0.2	15.8	3.1	7.2	6.0
2004/05	9.4	2.6	24.8	0.3	14.9	4.1	8.2	7.9
2005/06	9.4	2.7	25.7	0.3	16.0	4.1	8.2	9.7
2006/07	9.7	2.6	25.3	0.3	19.4	4.8	9.0	6.9
2007/08	8.6	2.3	20.1	0.4	16.4	2.1	6.4	4.6
2008/09	10.0	2.9	28.6	0.4	16.8	4.4	9.2	7.5
2009/10	10.0	2.5	25.0	0.3	17.5	3.9	8.8	6.5
Total Wheat Competitors								
2001/02	29.0	2.1	60.4	0.4	42.8	6.4	18.1	15.7
2002/03	25.8	1.5	38.6	0.7	25.3	7.2	19.3	10.4
2003/04	29.0	2.2	63.7	0.3	43.3	6.4	18.3	12.8
2004/05	28.9	2.2	62.7	0.3	41.3	7.4	19.2	15.4

Wheat Supply and Disappearance: Selected Exporters (Continued)

Million Metric Tons/Hectares

Country Mktg Year	Area Harvested	Yield	Production	MY Imports	MY Exports	Feed Consumpti	Total Consumpti	Ending Stocks
2005/06	26.9	2.4	65.4	0.4	41.5	7.9	19.6	20.0
2006/07	26.8	1.9	52.1	0.4	38.9	9.6	21.3	12.4
2007/08	27.1	1.9	50.7	0.5	35.1	5.7	17.7	10.8
2008/09	27.7	2.1	58.5	0.5	35.3	8.2	21.1	13.4
2009/10	27.0	2.2	59.0	0.4	38.5	8.0	21.0	13.2
India								
2001/02	25.7	2.7	69.7	0.0	3.1	0.5	65.1	23.0
2002/03	25.9	2.8	71.8	0.0	4.9	0.6	74.3	15.7
2003/04	24.9	2.6	65.1	0.0	5.7	0.6	68.3	6.9
2004/05	26.6	2.7	72.2	0.0	2.1	0.5	72.8	4.1
2005/06	26.5	2.6	68.6	0.0	0.8	0.3	70.0	2.0
2006/07	26.4	2.6	69.4	6.7	0.2	0.3	73.4	4.5
2007/08	28.0	2.7	75.8	1.9	0.1	0.2	76.3	5.8
2008/09	28.2	2.8	78.6	0.0	0.2	0.1	70.3	13.9
2009/10	27.8	2.8	77.5	0.0	2.0	0.1	72.5	16.9
Turkey								
2001/02	8.5	1.8	15.5	1.0	0.8	1.1	16.5	1.0
2002/03	8.6	2.0	16.8	1.2	0.8	1.0	16.8	1.4
2003/04	8.6	2.0	16.8	1.1	0.8	1.0	16.8	1.7
2004/05	8.6	2.2	18.5	0.4	2.0	1.0	16.8	1.8
2005/06	8.6	2.2	18.5	0.1	3.2	0.4	16.1	1.1
2006/07	8.6	2.0	17.5	1.7	2.4	0.8	16.7	1.3
2007/08	8.6	1.8	15.5	2.2	1.7	0.8	16.8	0.4
2008/09	8.6	2.0	16.8	3.5	2.0	0.7	16.9	1.8
2009/10	8.7	2.1	18.0	1.5	2.1	0.8	17.0	2.2

Corn Supply and Disappearance: Selected Exporters
Million Metric Tons/Hectares

Country Mktg Year	Area Harvested	Yield	Production	MY Imports	MY Exports	Feed Consumpti	Total Consumpti	Ending Stocks
Argentina								
2001/02	2.5	6.0	14.7	0.0	10.9	2.7	4.2	0.3
2002/03	2.5	6.3	15.5	0.0	11.2	2.5	4.1	0.5
2003/04	2.3	6.5	15.0	0.0	10.9	2.8	4.4	0.2
2004/05	2.8	7.4	20.5	0.0	14.6	3.5	5.2	1.0
2005/06	2.4	6.5	15.8	0.1	9.5	4.4	6.2	1.2
2006/07	2.8	8.0	22.5	0.0	15.3	4.8	6.7	1.7
2007/08	3.4	6.4	22.0	0.1	14.8	5.1	7.0	2.0
2008/09	2.3	5.8	13.0	0.1	7.0	4.8	6.7	1.4
2009/10	2.0	7.5	15.0	0.0	9.0	4.0	5.9	1.5
China								
2001/02	24.3	4.7	114.1	0.0	8.6	94.0	123.1	84.8
2002/03	24.6	4.9	121.3	0.0	15.2	96.0	125.9	65.0
2003/04	24.1	4.8	115.8	0.0	7.6	97.0	128.4	44.9
2004/05	25.4	5.1	130.3	0.0	7.6	98.0	131.0	36.6
2005/06	26.4	5.3	139.4	0.1	3.7	101.0	137.0	35.3
2006/07	28.5	5.3	151.6	0.0	5.3	104.0	145.0	36.6
2007/08	29.5	5.2	152.3	0.0	0.5	105.0	149.0	39.4
2008/09	29.4	5.6	165.5	0.1	0.3	110.0	152.0	52.7
2009/10	29.5	5.5	162.5	0.1	0.5	115.0	158.0	56.7
South Africa								
2001/02	3.5	2.8	10.1	0.9	1.1	3.9	8.4	1.9
2002/03	3.7	2.7	9.7	0.4	1.1	4.0	8.5	2.4
2003/04	3.3	2.9	9.7	0.2	0.7	4.1	8.7	3.0
2004/05	3.2	3.6	11.7	0.4	2.1	5.0	9.7	3.2
2005/06	2.0	3.4	6.9	0.9	0.5	4.0	8.2	2.3
2006/07	2.9	2.5	7.3	1.1	0.5	4.4	8.6	1.7
2007/08	3.3	4.0	13.2	0.1	2.2	4.3	9.2	3.5
2008/09	3.0	4.0	12.0	0.1	2.5	4.7	9.8	3.3
2009/10	3.2	3.6	11.5	0.1	2.0	4.7	10.0	2.9
Brazil								
2001/02	11.8	3.0	35.5	0.4	2.1	29.5	35.0	1.5
2002/03	13.0	3.4	44.5	0.7	4.6	30.0	35.8	6.3
2003/04	12.4	3.4	42.0	0.4	4.4	30.5	36.3	7.9
2004/05	11.6	3.0	35.0	0.5	0.7	32.1	38.5	4.2
2005/06	12.9	3.2	41.7	1.1	4.5	33.0	39.5	3.0
2006/07	14.0	3.6	51.0	1.4	10.8	34.5	41.0	3.6

Corn Supply and Disappearance: Selected Exporters (Continued)

Million Metric Tons/Hectares

Country Mktg Year	Area Harvested	Yield	Production	MY Imports	MY Exports	Feed Consumpti	Total Consumpti	Ending Stocks
2007/08	14.7	4.0	58.6	0.7	7.8	36.0	42.5	12.6
2008/09	14.1	3.5	50.0	0.5	10.0	37.0	44.5	8.6
2009/10	14.0	3.9	54.0	0.5	10.0	38.0	45.5	7.6
Total Corn Competitors								
2001/02	42.1	4.1	174.3	1.3	22.6	130.1	170.7	88.6
2002/03	43.7	4.4	191.0	1.2	32.2	132.5	174.3	74.2
2003/04	42.1	4.3	182.5	0.6	23.7	134.4	177.8	55.9
2004/05	43.0	4.6	197.5	0.9	25.0	138.6	184.4	44.9
2005/06	43.7	4.7	203.8	2.2	18.3	142.4	190.9	41.7
2006/07	48.2	4.8	232.4	2.6	31.9	147.7	201.3	43.5
2007/08	50.9	4.8	246.1	0.9	25.3	150.4	207.7	57.4
2008/09	48.8	4.9	240.5	0.8	19.8	156.5	213.0	66.0
2009/10	48.7	5.0	243.0	0.7	21.5	161.7	219.4	68.7

Barley Supply and Disappearance: Selected Exporters
Million Metric Tons/Hectares

Country Mktg Year	Area Harvested	Yield	Production	MY Imports	MY Exports	Feed Consumpti	Total Consumpti	Ending Stocks
Australia								
2001/02	3.7	2.2	8.3	0.0	4.7	1.8	2.8	1.8
2002/03	3.9	1.0	3.9	0.0	2.0	1.8	2.7	0.9
2003/04	4.5	2.3	10.4	0.0	6.4	2.2	3.1	1.9
2004/05	4.6	1.7	7.7	0.0	4.3	2.5	3.5	1.9
2005/06	4.4	2.2	9.5	0.0	5.3	2.5	3.5	2.7
2006/07	4.2	1.0	4.3	0.0	1.9	2.9	3.8	1.3
2007/08	4.9	1.5	7.2	0.0	3.4	2.2	3.2	2.0
2008/09	4.5	1.6	7.0	0.0	3.5	2.2	3.2	2.3
2009/10	4.4	1.7	7.5	0.0	4.0	2.3	3.3	2.5
Canada								
2001/02	4.2	2.6	10.8	0.1	1.1	8.9	10.3	2.0
2002/03	3.3	2.2	7.5	0.2	0.4	6.5	7.9	1.5
2003/04	4.4	2.8	12.2	0.0	1.8	8.4	9.7	2.1
2004/05	3.8	3.3	12.6	0.1	1.2	8.8	10.1	3.4
2005/06	3.6	3.2	11.7	0.0	2.3	8.4	9.6	3.3
2006/07	3.2	3.0	9.6	0.0	1.2	8.8	10.2	1.5
2007/08	4.0	2.7	11.0	0.1	3.0	6.6	7.9	1.6
2008/09	3.5	3.4	11.8	0.1	1.6	7.7	9.0	2.9
2009/10	3.5	2.9	10.0	0.1	1.8	7.9	9.1	2.0
EU-27								
2001/02	14.1	4.2	58.8	1.4	4.2	39.7	54.9	10.0
2002/03	14.0	4.2	58.2	1.1	5.2	39.3	55.4	8.7
2003/04	14.1	4.0	55.8	0.7	2.6	41.8	58.0	4.5
2004/05	13.7	4.7	64.1	0.3	3.3	38.6	54.6	11.1
2005/06	13.8	4.0	54.8	0.1	3.3	38.2	54.1	8.5
2006/07	13.8	4.1	56.2	0.2	3.5	38.7	55.7	5.8
2007/08	13.8	4.2	57.6	0.3	3.8	38.9	54.9	5.0
2008/09	14.6	4.5	65.6	0.2	3.5	40.6	57.1	10.2
2009/10	14.0	4.3	61.0	0.2	3.2	42.0	58.5	9.6

Sorghum Supply and Disappearance: Selected Exporters

Million Metric Tons/Hectares

Country Mktg Year	Area Harvested	Yield	Production	MY Imports	MY Exports	Feed Consumpti	Total Consumpti	Ending Stocks
Argentina								
2001/02	0.5	5.1	2.8	0.0	0.4	2.2	2.3	0.5
2002/03	0.6	5.1	2.8	0.0	0.6	2.1	2.3	0.4
2003/04	0.5	4.6	2.2	0.0	0.2	1.9	2.0	0.4
2004/05	0.6	5.0	2.9	0.0	0.4	2.4	2.6	0.3
2005/06	0.5	5.0	2.3	0.0	0.2	2.1	2.3	0.2
2006/07	0.6	4.5	2.8	0.0	1.1	1.5	1.7	0.2
2007/08	0.7	4.1	2.9	0.0	1.2	1.6	1.8	0.2
2008/09	0.5	3.7	1.8	0.0	0.5	1.1	1.3	0.2
2009/10	0.7	4.7	3.3	0.0	0.8	2.3	2.5	0.2
Australia								
2001/02	0.8	2.5	2.0	0.0	0.4	1.7	1.7	0.1
2002/03	0.7	2.2	1.5	0.0	0.1	1.4	1.4	0.1
2003/04	0.7	2.7	2.0	0.0	0.6	1.4	1.4	0.1
2004/05	0.8	2.7	2.0	0.0	0.2	1.8	1.8	0.1
2005/06	0.8	2.5	1.9	0.0	0.1	1.9	1.9	0.0
2006/07	0.6	2.1	1.3	0.0	0.1	1.2	1.2	0.0
2007/08	1.0	3.0	3.1	0.0	0.8	2.2	2.2	0.1
2008/09	0.8	3.0	2.4	0.0	0.8	1.6	1.6	0.2
2009/10	0.8	3.0	2.3	0.0	0.8	1.5	1.5	0.2

U.S. Grains Supply and Distribution: Wheat, Corn, Sorghum, Barley, Oats, Rye, and Rice

Thousand Metric Tons/Hectares

	Area Harvested	Yield	Rough Production	Production	Imports	TY Imports	Exports	TY Exports	Feed Dom. Consumption	Domestic Consumption	Ending Stocks
Wheat											
2007/08	20,639	3	nr	55,821	3,065	2,930	34,403	34,328	418	28,574	8,323
2008/09	22,535	3	nr	68,026	3,402	3,200	27,488	27,000	6,804	34,046	18,217
2009/10	19,792	3	nr	54,859	3,130	3,100	24,494	24,500	5,987	34,102	17,610
Corn											
2007/08	35,014	9	nr	331,177	508	502	61,873	60,757	150,835	261,671	41,255
2008/09	31,825	10	nr	307,386	381	400	44,452	44,500	135,896	263,918	40,652
2009/10	31,487	10	nr	303,163	381	400	48,262	49,000	130,816	268,237	27,697
Sorghum											
2007/08	2,749	5	nr	12,636	1	1	7,052	6,686	4,166	5,059	1,340
2008/09	2,942	4	nr	11,998	3	3	3,302	3,300	5,588	8,382	1,657
2009/10	2,408	4	nr	9,652	0	0	3,556	3,600	4,064	6,350	1,403
Barley											
2007/08	1,417	3	nr	4,575	688	764	902	901	706	4,376	1,485
2008/09	1,524	3	nr	5,214	653	600	283	350	1,415	5,116	1,953
2009/10	1,392	4	nr	4,899	544	500	435	400	1,524	5,225	1,736
Oats											
2007/08	609	2	nr	1,313	2,125	2,244	42	53	2,081	3,161	969
2008/09	565	2	nr	1,287	1,982	1,800	44	40	2,055	3,143	1,051
2009/10	571	2	nr	1,306	1,896	1,800	44	40	2,114	3,202	1,007
Rye											
2007/08	102	2	nr	160	179	152	7	10	99	334	10
2008/09	109	2	nr	203	127	125	10	10	83	320	10
2009/10	105	2	nr	178	127	125	10	10	56	292	13
Rice, Milled											
2007/08	1,112	8	8,999	6,344	759	651	3,370	3,294	nr	4,057	942
2008/09	1,204	8	9,241	6,515	603	700	3,006	3,100	nr	4,313	741
2009/10	1,280	8	9,979	7,035	699	750	3,102	3,100	nr	4,216	1,157

Notes: Wheat Trade Year (TY) statistics are on July/June years. Barley, corn, sorghum, rye and oats Trade Year (TY) statistics are on Oct/Sept years. Rice Trade Year (TY) statistics are for the subsequent calendar year; 'Imports' and 'Exports' columns contain data on the local marketing year: wheat, barley, oats and rye are June/May; corn and sorghum are Sept/Aug; rice is Aug/July.

Total Wheat and Coarse Grains: Supply and Demand

Millions of Metric Tons/Hectares

	Area Harvested	Yield	Production	TY Exports	Feed Dom. Consumpti	Domestic Consumpti	Ending Stocks
Wheat and Coarse Grains							
1980/81	577.6	2.0	1,159.3	200.6	562.6	1,179.2	255.2
1981/82	587.8	2.0	1,204.0	196.9	573.5	1,178.3	281.0
1982/83	576.9	2.2	1,248.0	189.6	593.4	1,197.1	332.1
1983/84	563.8	2.1	1,162.5	193.2	588.4	1,216.1	278.5
1984/85	567.0	2.3	1,315.0	203.6	609.9	1,253.5	340.0
1985/86	570.9	2.3	1,328.5	165.2	613.1	1,247.9	420.6
1986/87	565.6	2.4	1,348.0	174.7	644.2	1,299.4	469.2
1987/88	545.0	2.4	1,285.3	202.2	655.1	1,329.7	422.6
1988/89	542.5	2.2	1,218.0	203.3	618.2	1,302.0	338.6
1989/90	549.0	2.4	1,327.4	208.9	642.9	1,346.2	319.9
1990/91	548.9	2.6	1,417.3	190.1	667.3	1,369.2	368.0
1991/92	546.3	2.5	1,355.5	207.5	650.1	1,364.7	358.8
1992/93	548.7	2.6	1,431.3	205.2	662.3	1,389.7	397.6
1993/94	539.2	2.5	1,355.8	188.2	654.0	1,388.9	364.5
1994/95	537.5	2.6	1,392.1	200.1	666.9	1,395.6	360.9
1995/96	533.5	2.5	1,338.0	187.5	636.6	1,380.4	318.5
1996/97	552.9	2.7	1,490.2	198.4	669.6	1,442.9	365.8
1997/98	539.4	2.8	1,491.4	190.3	680.8	1,444.8	412.3
1998/99	534.0	2.8	1,481.6	198.7	679.8	1,448.3	445.6
1999/00	514.7	2.8	1,464.7	214.3	685.0	1,467.8	442.0
2000/01	514.0	2.8	1,445.9	205.1	693.7	1,469.6	418.3
2001/02	516.2	2.9	1,478.2	208.5	708.7	1,494.7	401.8
2002/03	505.9	2.9	1,442.7	209.9	707.8	1,507.3	337.2
2003/04	515.0	2.9	1,469.2	206.3	711.4	1,533.4	273.0
2004/05	516.6	3.2	1,640.2	215.0	749.9	1,585.0	328.3
2005/06	518.8	3.1	1,598.4	222.5	748.5	1,615.2	311.5
2006/07	516.9	3.1	1,581.5	230.2	739.7	1,626.8	266.1
2007/08	535.5	3.2	1,686.9	245.7	751.6	1,672.9	280.1
2008/09	536.4	3.3	1,780.0	239.4	759.0	1,709.2	350.9
2009/10	534.7	3.2	1,730.6	228.1	757.9	1,733.1	348.3

Notes: Wheat and coarse grains trade data are on July/June years through 1975/76. From 1976/77 to the present, coarse grains data are on an Oct/Sept trade year.

World Wheat and Coarse Grains: Supply and Demand

Millions of Metric Tons/Hectares

	Area Harvested	Yield	Production	TY Exports	Feed Dom. Consumpti	Domestic Consumpti	Ending Stocks
Wheat							
1987/88	220.1	2.3	498.4	114.1	113.6	530.6	159.1
1988/89	217.9	2.3	495.0	104.3	104.0	519.5	134.7
1989/90	226.5	2.4	533.2	103.9	103.7	531.3	136.6
1990/91	231.6	2.5	588.6	101.3	130.1	554.1	171.2
1991/92	223.4	2.4	543.3	111.4	113.8	551.6	162.9
1992/93	222.7	2.5	562.4	113.2	110.9	548.3	176.7
1993/94	221.8	2.5	558.2	101.7	108.0	552.7	182.2
1994/95	214.4	2.4	522.7	101.5	99.6	541.8	163.1
1995/96	219.1	2.5	537.1	99.2	91.9	544.6	155.6
1996/97	230.3	2.5	581.3	104.0	96.7	573.4	163.5
1997/98	228.5	2.7	610.0	104.5	100.9	577.2	196.3
1998/99	225.4	2.6	590.2	102.0	103.6	578.7	207.8
1999/00	215.7	2.7	586.7	112.0	98.9	585.0	209.5
2000/01	217.9	2.7	582.9	102.3	104.4	585.1	207.3
2001/02	215.2	2.7	583.1	108.0	107.6	587.2	203.2
2002/03	214.5	2.6	567.9	107.1	111.9	604.4	166.6
2003/04	209.6	2.6	553.5	103.7	96.3	588.7	131.4
2004/05	217.3	2.9	625.6	113.8	105.6	607.4	149.7
2005/06	218.4	2.8	619.6	114.0	111.2	622.6	146.7
2006/07	212.3	2.8	595.6	115.6	106.2	615.3	127.0
2007/08	217.9	2.8	609.7	116.8	96.2	616.7	120.0
2008/09	224.9	3.0	682.2	135.0	114.1	633.8	168.4
2009/10	223.7	2.9	656.1	121.3	111.4	641.8	182.7
Coarse Grains							
1987/88	324.9	2.4	786.9	88.1	541.5	799.2	263.5
1988/89	324.6	2.2	722.9	99.0	514.2	782.5	203.9
1989/90	322.5	2.5	794.2	105.0	539.2	814.9	183.3
1990/91	317.3	2.6	828.7	88.9	537.3	815.2	196.8
1991/92	322.9	2.5	812.2	96.2	536.2	813.1	195.9
1992/93	326.0	2.7	868.8	91.9	551.3	841.4	220.9
1993/94	317.4	2.5	797.6	86.5	546.1	836.2	182.3
1994/95	323.1	2.7	869.4	98.6	567.4	853.8	197.9
1995/96	314.4	2.5	800.9	88.2	544.7	835.8	162.9
1996/97	322.6	2.8	908.9	94.4	573.0	869.5	202.3
1997/98	311.0	2.8	881.4	85.8	579.8	867.7	216.0
1998/99	308.6	2.9	891.3	96.7	576.1	869.6	237.8
1999/00	299.0	2.9	878.0	102.4	586.0	882.8	232.5
2000/01	296.1	2.9	863.0	102.7	589.3	884.5	210.9
2001/02	301.0	3.0	895.1	100.5	601.1	907.4	198.6
2002/03	291.4	3.0	874.8	102.7	595.9	902.9	170.6
2003/04	305.5	3.0	915.7	102.6	615.1	944.7	141.6
2004/05	299.3	3.4	1,014.6	101.2	644.3	977.6	178.6
2005/06	300.4	3.3	978.8	108.5	637.3	992.6	164.8
2006/07	304.6	3.2	985.9	114.6	633.5	1,011.5	139.2
2007/08	317.6	3.4	1,077.2	128.9	655.4	1,056.2	160.1
2008/09	311.4	3.5	1,097.8	104.5	644.9	1,075.4	182.5
2009/10	310.9	3.5	1,074.5	106.8	646.5	1,091.3	165.7

Notes: Wheat and coarse grains trade data are on July/June years through 1975/76. From 1976/77 to the present, coarse grains data are on an Oct/Sept trade year.

World Corn and Barley: Supply and Demand

Millions of Metric Tons/Hectares

	Area Harvested	Yield	Production	TY Exports	Feed Dom. Consumpti	Domestic Consumpti	Ending Stocks
Corn							
1987/88	127.0	3.5	450.8	58.8	316.5	458.2	197.5
1988/89	126.1	3.2	400.5	66.0	306.8	452.8	145.2
1989/90	127.3	3.6	461.7	74.5	324.8	474.1	132.8
1990/91	129.2	3.7	481.9	58.8	318.5	473.4	141.2
1991/92	132.6	3.7	493.0	63.0	334.4	493.3	140.8
1992/93	133.2	4.0	535.6	62.6	348.7	512.1	162.5
1993/94	130.7	3.6	475.8	57.4	342.0	509.0	129.3
1994/95	135.3	4.1	559.3	71.9	371.5	535.6	152.9
1995/96	135.0	3.8	516.3	64.8	365.1	536.5	132.7
1996/97	141.6	4.2	592.9	66.7	387.6	560.1	165.6
1997/98	136.3	4.2	574.4	63.1	401.1	573.7	166.2
1998/99	139.3	4.3	605.9	68.7	404.6	581.1	191.0
1999/00	139.0	4.4	608.0	72.3	423.0	605.3	193.7
2000/01	137.2	4.3	590.8	75.9	427.9	610.0	174.5
2001/02	137.9	4.4	600.3	72.8	436.3	623.7	151.2
2002/03	137.3	4.4	603.3	76.9	433.2	627.9	126.6
2003/04	141.6	4.4	627.1	79.1	445.4	648.9	104.8
2004/05	144.7	4.9	714.7	76.0	475.0	688.0	131.5
2005/06	145.4	4.8	698.8	82.6	477.4	706.1	124.2
2006/07	149.2	4.8	712.2	91.4	477.7	727.4	109.0
2007/08	159.9	5.0	791.6	98.3	496.5	769.9	130.7
2008/09	156.4	5.0	787.3	77.9	481.2	779.4	138.5
2009/10	156.4	5.0	781.5	81.2	482.5	794.5	125.5
Barley							
1987/88	78.7	2.2	175.4	18.3	129.6	173.5	33.6
1988/89	76.4	2.2	164.4	19.0	121.9	166.3	31.7
1989/90	73.7	2.3	166.1	18.5	126.0	170.4	27.5
1990/91	72.9	2.5	179.5	19.6	130.8	175.5	31.5
1991/92	76.5	2.2	169.8	19.4	120.3	166.5	34.8
1992/93	73.1	2.3	166.2	16.4	119.0	165.6	34.9
1993/94	73.8	2.3	168.9	18.8	123.8	169.1	34.8
1994/95	72.8	2.2	160.7	15.3	120.9	165.6	29.9
1995/96	68.6	2.1	141.2	13.4	107.8	150.7	20.4
1996/97	65.6	2.3	153.1	17.9	106.3	149.5	23.9
1997/98	64.5	2.4	153.9	12.8	104.1	145.9	31.9
1998/99	60.8	2.2	136.0	17.8	99.5	139.4	28.6
1999/00	54.5	2.3	127.4	17.8	94.0	132.5	23.5
2000/01	53.9	2.5	133.1	16.2	94.7	134.4	22.2
2001/02	56.3	2.5	143.3	17.2	95.5	136.7	28.9
2002/03	55.7	2.4	134.4	16.3	95.0	136.6	26.7
2003/04	59.6	2.4	142.2	14.8	102.6	146.4	22.5
2004/05	58.0	2.6	152.4	16.9	100.0	142.4	32.6
2005/06	56.0	2.4	136.2	17.5	97.1	140.8	28.0
2006/07	57.1	2.4	136.5	14.6	98.6	143.2	21.3
2007/08	57.5	2.3	133.1	18.5	92.7	135.4	18.9
2008/09	55.3	2.8	153.9	18.5	98.7	142.7	30.2
2009/10	55.6	2.6	142.9	17.2	99.8	144.6	28.5

Notes: Coarse grains trade data are on July June years through 1975/76. From 1976/77 to the present, coarse grains data are on an Oct/Sept trade year.

World Rice: Supply and Demand

Millions of Metric Tons/Hectares

	Area Harvested	Yield	Rough Production	Production	TY Exports	Domestic Consumpti	Ending Stocks
Rice, Milled							
1980/81	144.4	2.7	397.0	269.9	11.9	271.2	52.6
1981/82	144.4	2.8	408.3	277.9	11.3	280.0	50.5
1982/83	140.5	3.0	418.3	285.0	11.2	278.7	56.8
1983/84	144.6	3.1	450.9	306.9	11.9	294.4	69.3
1984/85	144.2	3.2	464.9	316.8	11.0	298.4	87.7
1985/86	144.8	3.2	467.3	318.0	11.8	307.9	97.7
1986/87	144.8	3.2	464.6	316.0	12.9	310.4	103.3
1987/88	141.7	3.3	465.0	315.3	11.4	313.3	105.3
1988/89	146.4	3.4	490.8	332.1	14.0	325.7	111.7
1989/90	147.6	3.5	510.3	345.2	11.7	336.3	120.6
1990/91	146.9	3.5	519.0	351.1	12.3	345.1	126.7
1991/92	147.4	3.5	522.8	353.2	14.4	353.2	126.7
1992/93	146.5	3.6	524.2	354.0	14.9	357.5	123.2
1993/94	145.3	3.6	526.1	354.7	16.6	358.9	119.0
1994/95	147.5	3.7	539.7	364.0	20.8	365.4	117.6
1995/96	148.2	3.7	547.3	368.8	19.7	368.2	118.1
1996/97	150.0	3.8	565.3	381.4	18.9	379.2	120.3
1997/98	151.3	3.8	575.0	387.3	27.6	379.8	127.7
1998/99	152.7	3.8	586.8	394.8	24.8	388.6	134.0
1999/00	155.3	3.9	608.9	409.3	22.8	400.3	143.1
2000/01	151.8	3.9	594.4	399.5	24.5	395.8	146.7
2001/02	150.8	3.9	595.5	400.2	27.9	414.0	132.9
2002/03	146.3	3.9	564.3	378.9	27.6	408.7	103.2
2003/04	148.8	3.9	585.5	392.5	27.2	414.6	81.1
2004/05	151.2	4.0	597.8	401.8	28.9	409.4	73.4
2005/06	153.2	4.1	623.3	418.4	29.1	415.8	76.0
2006/07	154.0	4.1	627.3	420.7	31.8	421.6	75.1
2007/08	154.7	4.2	647.1	433.7	29.7	428.2	80.6
2008/09	155.7	4.3	661.8	443.9	29.0	434.6	89.9
2009/10	157.2	4.3	669.1	448.5	29.6	443.4	95.0

Notes: Stocks, exports and consumption are expressed on a milled basis in marketing years.

ENDNOTES TO GRAIN: WORLD MARKETS AND TRADE

REGIONAL TABLES

North America: Canada, Mexico, the United States.

Central America: Belize, Costa Rica, El Salvador, Guatemala, Honduras, Nicaragua, Panama.

Caribbean: Anguilla, Antigua and Barbuda, Aruba, Bahamas, Barbados, Bermuda, British Virgin Islands, Cayman Islands, Cuba, Dominica, Dominican Republic, French West Indies, Grenada, Guadeloupe, Haiti, Jamaica and Dep, Leeward-Windward Islands, Martinique, Montserrat, Netherlands Antilles, Puerto Rico, Kitts and Nevis, St. Lucia, St. Vincent and the Grenadines, Trinidad and Tobago, Turks and Caicos Islands, Virgin Islands of the U.S.

South America: Argentina, Bolivia, Brazil, Chile, Colombia, Ecuador, Falkland Islands (Islas Malvinas), French Guiana, Guyana, Paraguay, Peru, Suriname, Uruguay, Venezuela.

EU: Austria, Belgium/Luxembourg, Bulgaria, Cyprus, Czech Republic, Denmark, Estonia, Finland, France, Germany, Greece, Hungary, Ireland, Italy, Latvia, Lithuania, Malta, Netherlands, Poland, Portugal, Romania, Slovakia, Slovenia, Spain, Sweden, United Kingdom.

Other Europe: Albania, Azores, Bosnia and Herzegovina, Croatia, Former Yugoslavia, Gibraltar, Iceland, Macedonia, Montenegro, Norway, Serbia, Switzerland.

Former Soviet Union: Armenia, Azerbaijan, Belarus, Georgia, Kazakhstan, Kyrgyzstan, Moldova, Russia, Tajikistan, Turkmenistan, Ukraine, Uzbekistan.

Middle East: Bahrain, Iran, Iraq, Israel, Jordan, Kuwait, Lebanon, Oman, Qatar, Saudi Arabia, Syria, Turkey, United Arab Emirates, Yemen.

North Africa: Algeria, Egypt, Libya, Morocco, Tunisia.

Sub-Saharan Africa: all African countries except North Africa.

East Asia: China, Hong Kong, Japan, South Korea, North Korea, Macau, Mongolia, Taiwan.

South Asia: Afghanistan, Bangladesh, Bhutan, India, Nepal, Pakistan, Sri Lanka, Maldives.

Southeast Asia: Brunei, Burma, Cambodia, Indonesia, Laos, Malaysia, Philippines, Singapore, Thailand, Vietnam.

Oceania: Australia, Fiji, New Zealand, Papua New Guinea.

OTHER NOTES

Local Marketing Years (LMY): LMY refers to the 12-month period following the main harvest, when the crop is marketed (i.e., consumed, traded, or stored). The year first listed begins a country's LMY for that commodity (2008/09 starts in 2008); except for summer grains in certain Southern Hemisphere countries and for rice in selected countries, where the second year begins the LMY (2008/09 starts in 2009). Key exporter LMY's are:

Wheat	Corn	Barley	Sorghum
Argentina (Dec/Nov)	Argentina (Mar/Feb)	Australia (Nov/Oct)	Argentina (Mar/Feb)
Australia (Oct/Sep)	Brazil (Mar/Feb)	Canada (Aug/Jul)	Australia (Mar/Feb)
Canada (Aug/Jul)	China (Oct/Sep)	EU-27 (Jul/Jun)	United States (Sep/Aug)
China (Jul/Jun)	South Africa (May/Apr)	Russia (Jul/Jun)	
EU-27 (Jul/Jun)	United States (Sep/Aug)	Ukraine (Jul/Jun)	
India (Apr/Mar)		United States (Jun/May)	
Kazakhstan (Jul/Jun)			
Russia (Jul/Jun)			
Turkey (Jun/May)			
Ukraine (Jul/Jun)			
United States (Jun/May)			

For a complete list of local marketing years, please see the FAS website (<http://www.fas.usda.gov/psdonline/psdAvailability.aspx>).

Stocks: Unless otherwise stated, stock data are based on an aggregate of differing local marketing years and should not be construed as representing world stock levels at a fixed point in time.

Consumption: World totals for consumption reflect total utilization, including food, seed, industrial, feed, and waste; as well as differences in local marketing year imports and local marketing year exports. Consumption statistics for regions and individual countries, however, reflect food, seed, industrial, feed, and waste only.

Trade: All PSD tables are balanced on the different local marketing years. All trade tables contain Trade Year (TY) data which puts all countries on a uniform, 12-month period for analytical comparisons: wheat is July/June; coarse grains, corn, barley, sorghum, oats, and rye are Oct/Sept; and rice is calendar year.

EU Consolidation: The trade figures starting from 1999/00 represent EU-27 and exclude all intra-trade. For the years 1960/61 through 1998/99, figures are the EU-15 and also exclude all intra-trade. EU-15 member states' data for grains are no longer maintained in the official USDA database. Data for the individual NMS-10, plus Bulgaria and Romania, exists only prior to 1999/00.

Statistics: (1) Wheat trade statistics include wheat, flour, and selected pasta products on a grain equivalent basis. (2) Rice trade statistics include rough, brown, milled, and broken on a milled

equivalent basis. (3) Coarse grains statistics include corn, barley, sorghum, oats, rye, millet, and mixed grains but exclude trade in barley malt, millet, and mixed grains.

Unaccounted: This term includes grain in transit, reporting discrepancies in some countries, and trade to countries outside the USDA database.

The Field Crops and Livestock Branch, Industry and Sector Analysis Division, Foreign Agricultural Service, USDA, Washington DC 20250, prepared this circular. Information is gathered from official statistics of foreign governments and other foreign source materials, reports of U.S. agricultural attachés and Foreign Service officers, office research, and related information. Further information may be obtained by writing the Division or telephoning (202) 720-6590.

Note: The previous report in this series was the Grain: World Markets and Trade Foreign Agricultural Service Circular FG 05-09 May 2009. For further details on world grain production, please see World Agricultural Production Foreign Agricultural Service Circular WAP 06-09 June 2009.

This circular is available in its entirety on the World Wide Web via the Foreign Agricultural Service Home Page. The address is: <http://www.fas.usda.gov>