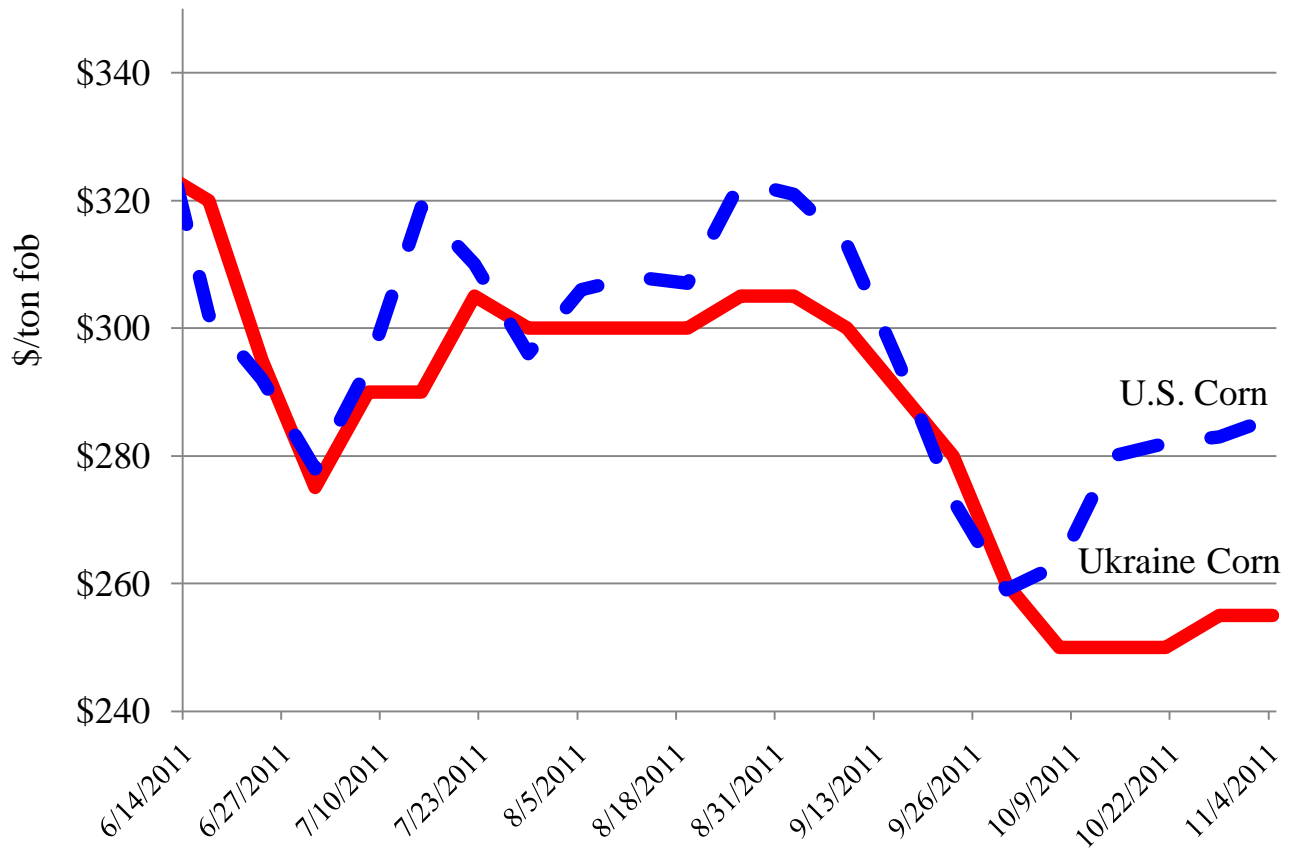




Grain: World Markets and Trade

Falling Ukrainian Corn Prices Undermine U.S. Exports



Ukraine's record exportable supplies and low prices for corn mean more competition in traditional Mediterranean markets. Those competitively-priced, abundant supplies are also being sold to Asian markets that have historically imported U.S. corn. There are reported sales of Ukrainian corn to Japan (and possibly South Korea and Taiwan). Meanwhile, U.S. sales to Japan are down nearly 20 percent compared to last year.

Ukrainian 2011/2012 corn exports are forecast to more than double to 12 million tons. With limited storage capacity, there is a strong incentive to export before new Brazilian and Argentine crops are available to world markets in March 2012. Abundant supplies of low-priced feed-quality wheat are also available to compete with U.S. corn.

TABLE OF CONTENTS

World Markets and Trade: Commentary and Current Data	
Wheat	4
Rice	9
Coarse Grains	13
Historical Data Series for Selected Regions and Countries	33
Endnotes to Grain: World Markets and Trade	52

The Foreign Agricultural Service (FAS) updates its production, supply and distribution database for cotton, oilseeds, and grains at 9 a.m. on the day the World Agricultural Supply and Demand Estimates (WASDE) report is released. It is available on the FAS website (<http://www.fas.usda.gov/psdonline/>). This circular is released at 10:00 a.m. on the same day, together with its downloadable data set.

All Grain Summary Comparison

	Marketing Year	Wheat			Rice, Milled			Corn		
		2009/10	2010/11	2011/12	2009/10	2010/11	2011/12	2009/10	2010/11	2011/12
Production										
United States	(Jun-May)	60.4	60.1	54.4	7.1	7.6	6.0	332.5	316.2	312.7
Other		623.9	588.6	628.9	433.4	443.6	454.9	487.1	512.5	546.3
World Total		684.3	648.7	683.3	440.5	451.2	461.0	819.6	828.7	859.0
Domestic Consumption										
United States	(Jun-May)	31.0	30.7	32.1	4.0	4.4	4.0	281.6	285.0	279.7
Other		617.3	621.2	641.2	430.8	441.1	452.3	534.1	558.3	583.8
World Total		648.3	652.0	673.3	434.8	445.4	456.4	815.7	843.3	863.4
Ending Stocks										
United States	(Jun-May)	26.6	23.5	22.5	1.2	1.5	1.2	43.4	28.7	21.4
Other		174.4	172.7	180.1	93.0	96.4	99.4	100.7	100.4	100.2
World Total		200.9	196.1	202.6	94.2	97.9	100.6	144.0	129.0	121.6
TY Imports										
United States	(Jun-May)	3.2	2.6	3.2	0.6	0.6	0.7	0.2	0.7	0.4
Other		128.6	126.5	130.5	28.3	30.9	29.9	90.1	89.4	91.7
World Total		131.8	129.0	133.7	28.9	31.5	30.6	90.3	90.1	92.1
TY Exports										
United States	(Jun-May)	24.2	36.0	26.0	3.9	3.3	3.1	49.7	45.3	41.0
Other		110.2	96.3	110.6	27.7	31.1	29.9	43.2	46.0	53.4
World Total		134.4	132.3	136.6	31.6	34.4	32.9	93.0	91.2	94.4

Note: Consumption in this table has not been adjusted for differences in marketing year imports and exports and therefore differs from global totals shown elsewhere.

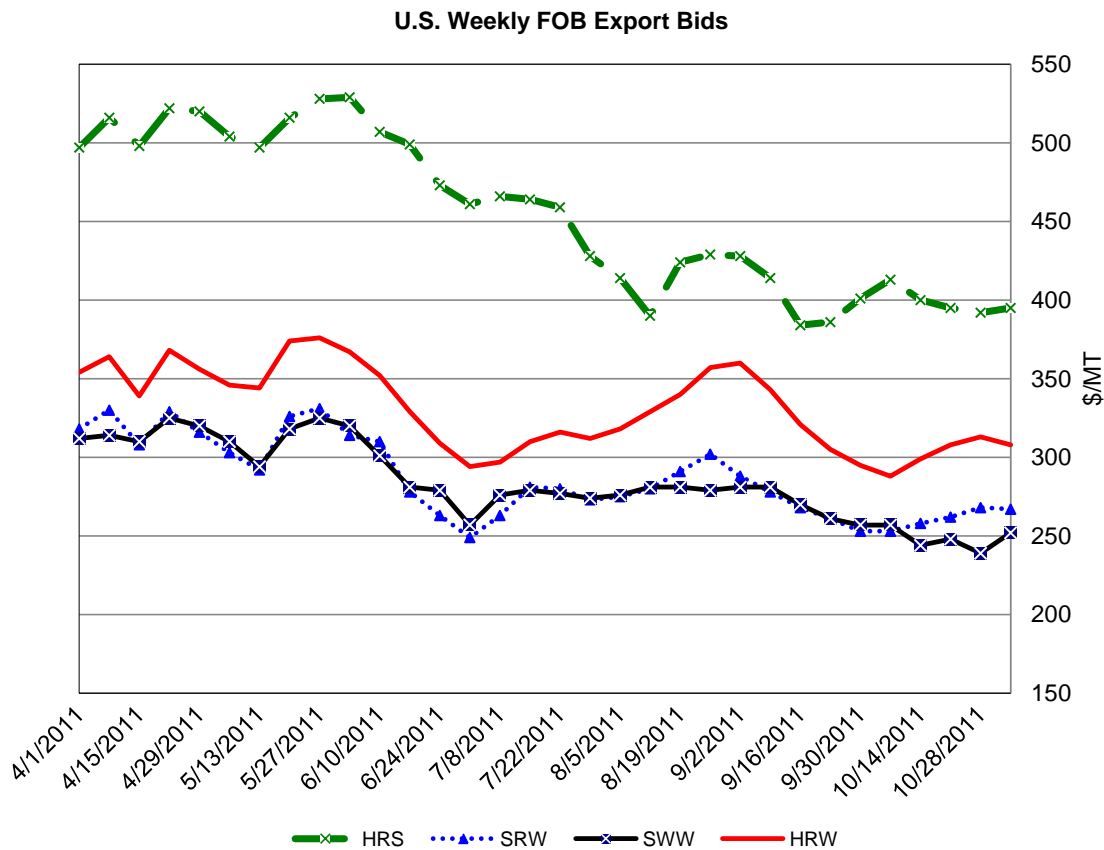
Marketing years for U.S. grains are: Wheat (Jun-May), Rice (Aug-Jul), Corn (Sep-Aug).
'Marketing Year' column is germane for U.S. wheat only.

WHEAT: WORLD MARKETS AND TRADE

OVERVIEW

Global trade for 2011/12 is raised because of stronger demand, particularly in North and East Africa and China. U.S. exports are unchanged from last month. The forecast U.S. season-average price is lowered this month, but remains a record.

PRICES:



Domestic: This month Hard Red Winter (HRW) and Soft Red Winter (SRW) prices recouped some of their losses from September, while Hard Red Spring (HRS) and Soft White Wheat (SWW) moved lower. HRW prices are up \$20 to \$308 per ton as a result of stronger domestic demand and concerns over dryness in the Plains. SRW prices ended the month \$14 higher at \$267 per ton, underpinned by corn prices. HRS prices fell \$18 to \$395 per ton and SWW are \$5 lower at \$252 per ton.

TRADE CHANGES IN 2011/12

Selected Exporters

- **EU** is up 1.0 million tons to 17.0 million on account of stronger demand from traditional markets.
- **Russia** is raised 1.0 million tons to a record 19.0 million based on the torrid pace of exports and continued strong import demand for its competitively-priced wheat.

Selected Importers

- **Algeria** is boosted 300,000 tons to 6.1 million because of a smaller crop.
- **Brazil** is up 300,000 tons to 7.0 million spurred by reports of rain during harvest reducing the quality of domestic supplies.
- **China** is raised 500,000 tons to 1.5 million as a result of a reported purchase of old-crop feed-quality wheat from Australia.
- **South Korea** is cut 500,000 tons to 4.2 million based on competition from corn.
- **Morocco** is up 400,000 tons to 3.0 million due to the poor quality of last spring's crop.

World Wheat, Flour, and Products Trade
July/June Year, Thousand Metric Tons

	2007/08	2008/09	2009/10	2010/11	2011/12 Oct	2011/12 Nov
TY Exports						
Argentina	10,228	8,621	5,172	7,738	8,000	8,000
Australia	7,449	13,450	13,764	18,477	19,000	19,000
Canada	16,561	18,674	18,992	16,768	18,000	18,000
China	2,835	723	892	941	1,000	1,000
EU-27	12,272	25,351	22,115	22,850	16,000	17,000
Kazakhstan	8,181	5,701	7,871	5,519	8,500	8,500
Russia	12,220	18,393	18,556	3,983	18,000	19,000
Turkey	1,763	2,342	4,371	2,946	3,500	3,500
Ukraine	1,236	13,037	9,337	4,302	8,000	8,000
Uruguay	422	616	994	1,197	1,100	1,100
Others	8,984	8,952	8,157	11,626	7,514	7,514
Subtotal	82,151	115,860	110,221	96,347	108,614	110,614
United States	34,282	27,101	24,172	35,977	26,000	26,000
World Total	116,433	142,961	134,393	132,324	134,614	136,614
TY Imports						
Afghanistan	2,300	3,800	2,500	2,300	3,000	3,000
Algeria	5,904	6,356	5,167	6,436	5,800	6,100
Bangladesh	1,500	2,882	3,331	3,900	2,800	2,800
Brazil	7,076	6,762	6,667	6,710	6,700	7,000
Egypt	7,700	9,900	10,300	10,600	10,500	10,500
EU-27	6,933	7,737	5,519	4,712	7,500	7,500
Indonesia	5,227	5,419	5,364	6,611	6,700	6,700
Iraq	3,429	3,879	3,905	3,632	3,700	3,700
Israel	1,189	2,063	1,862	1,392	1,700	1,700
Japan	5,701	5,156	5,502	5,869	5,800	5,800
Korea, South	3,092	3,371	4,470	4,761	4,700	4,200
Libya	1,574	1,689	2,091	1,419	1,600	1,600
Mexico	3,136	3,342	3,196	3,462	3,600	3,500
Morocco	4,192	3,759	2,304	3,903	2,600	3,000
Nigeria	2,633	3,550	4,079	4,051	4,100	4,100
Peru	1,444	1,385	1,703	1,757	1,700	1,700
Philippines	2,266	3,201	3,188	3,235	3,000	3,000
Saudi Arabia	75	1,275	1,910	1,741	2,000	2,000
Sudan	1,060	1,712	1,901	1,642	1,800	1,800
Thailand	1,072	1,128	1,600	1,920	1,600	1,600
Tunisia	2,372	1,768	1,534	1,773	1,800	1,800
Turkey	2,192	3,578	3,218	3,517	3,500	3,500
Uzbekistan	990	1,440	1,677	1,618	1,600	1,700
Vietnam	1,066	1,016	1,927	2,460	2,200	2,200
Yemen	1,900	2,796	2,602	2,705	2,700	2,700
Others	34,453	47,823	41,046	34,325	36,105	37,320
Subtotal	110,476	136,787	128,563	126,451	128,805	130,520
Unaccounted	3,005	2,775	2,595	3,302	2,609	2,894
United States	2,952	3,399	3,235	2,571	3,200	3,200
World Total	116,433	142,961	134,393	132,324	134,614	136,614

TY=Trade Year, see Endnotes.

World Wheat Production, Consumption, and Stocks
Local Marketing Years, Thousand Metric Tons

	2007/08	2008/09	2009/10	2010/11	2011/12 Oct	2011/12 Nov
Production						
Argentina	18,600	11,000	11,000	15,500	13,500	13,000
Australia	13,569	21,420	21,834	26,000	26,000	26,000
Canada	20,054	28,611	26,848	23,167	24,200	24,200
China	109,298	112,464	115,120	115,180	117,000	117,000
Egypt	8,275	7,977	8,523	7,200	8,700	8,700
EU-27	120,133	151,122	138,816	135,674	136,330	137,486
India	75,810	78,570	80,680	80,800	85,930	85,930
Iran	15,887	7,957	13,485	15,500	13,750	13,750
Kazakhstan	16,467	12,538	17,052	9,700	19,000	21,000
Morocco	1,583	3,730	6,400	4,887	6,100	6,100
Pakistan	23,295	20,959	24,000	23,900	24,000	24,000
Russia	49,368	63,765	61,770	41,508	56,000	56,000
Turkey	15,500	16,800	18,450	17,000	18,500	18,500
Ukraine	13,938	25,885	20,866	16,844	22,000	22,000
Uzbekistan	6,200	6,000	6,200	6,500	6,300	6,300
Others	48,297	45,976	52,896	49,276	49,235	48,920
Subtotal	556,274	614,774	623,940	588,636	626,545	628,886
United States	55,821	68,016	60,366	60,062	54,650	54,413
World Total	612,095	682,790	684,306	648,698	681,195	683,299
Total Consumption						
Algeria	8,050	8,300	8,550	8,750	8,850	8,850
Brazil	10,300	10,700	11,000	10,800	10,800	11,200
Canada	6,793	7,977	6,927	7,736	8,800	8,800
China	106,000	105,500	107,000	109,500	113,000	113,000
Egypt	15,800	17,200	17,900	17,700	18,800	18,800
EU-27	116,536	127,000	125,000	122,000	126,500	127,000
India	76,423	70,924	78,150	81,810	84,700	84,700
Iran	15,500	15,800	16,100	15,700	15,000	15,000
Kazakhstan	7,800	7,500	7,800	6,700	7,900	8,400
Morocco	7,225	7,450	8,100	8,250	8,750	8,750
Pakistan	22,400	22,800	23,000	23,200	23,400	23,400
Russia	37,650	38,900	39,600	38,600	38,600	38,600
Turkey	16,800	16,900	17,100	17,200	18,100	18,100
Ukraine	12,300	11,900	12,300	11,600	12,500	12,500
Uzbekistan	7,000	7,100	7,500	7,900	7,900	8,000
Others	118,614	125,908	131,271	133,795	135,541	136,147
Subtotal	589,062	608,419	619,521	622,767	642,369	644,760
United States	28,614	34,293	30,978	30,710	32,065	32,065
World Total	617,676	642,712	650,499	653,477	674,434	676,825
Ending Stocks						
Australia	3,851	3,389	5,593	7,287	7,876	7,787
China	39,081	45,803	54,425	60,091	64,091	64,591
Egypt	4,274	4,857	5,596	5,509	5,809	5,809
EU-27	12,429	18,937	16,157	11,693	12,958	12,679
India	5,800	13,430	16,120	15,360	15,590	15,590
Kazakhstan	3,901	3,357	4,795	2,283	4,908	6,408
Russia	4,068	10,743	14,521	13,535	13,135	12,135
Others	45,293	48,715	57,146	56,902	55,216	55,056
Subtotal	118,697	149,231	174,353	172,660	179,583	180,055
United States	8,323	17,867	26,552	23,466	22,782	22,545
World Total	127,020	167,098	200,905	196,126	202,365	202,600

Regional Wheat Imports, Production, Consumption, and Stocks

Thousand Metric Tons

	2007/08	2008/09	2009/10	2010/11	Oct 2011/12	Nov 2011/12
TY Imports						
North America	6,475	7,128	6,834	6,462	7,200	7,100
Central America	1,460	1,489	1,469	1,678	1,525	1,525
South America	13,092	13,074	13,091	12,935	12,990	13,290
European Union	6,933	7,737	5,519	4,712	7,500	7,500
Other Europe	1,923	1,712	1,696	1,649	1,735	1,735
Former Soviet Union - 12	6,032	6,569	5,415	5,473	5,800	6,175
Middle East	11,810	28,218	22,515	16,830	18,475	18,475
North Africa	21,742	23,472	21,396	24,131	22,300	23,000
Sub-Saharan Africa	10,287	13,707	15,773	14,475	15,045	15,485
East Asia	11,277	11,322	13,745	13,892	13,900	13,900
South Asia	8,215	10,771	7,586	7,662	7,210	7,210
Southeast Asia	11,405	12,324	13,902	16,301	15,450	15,450
Others	2,777	2,663	2,857	2,822	2,875	2,875
Total	113,428	140,186	131,798	129,022	132,005	133,720
Production						
North America	79,468	100,627	91,362	86,908	82,500	82,388
South America	25,435	20,516	21,039	25,751	23,462	22,962
European Union	120,133	151,122	138,816	135,674	136,330	137,486
Other Europe	4,405	4,712	4,609	3,800	4,280	4,420
Former Soviet Union - 12	92,470	115,491	113,927	80,971	110,445	112,445
Middle East	41,040	30,325	38,369	40,175	39,040	39,040
North Africa	13,948	14,352	20,261	16,133	19,325	19,025
Sub-Saharan Africa	5,547	6,103	6,155	5,568	6,060	5,786
East Asia	110,590	113,776	116,281	116,240	118,240	118,234
South Asia	105,070	103,898	111,200	111,020	115,050	115,050
Oceania	13,846	21,697	22,111	26,277	26,277	26,277
Others	143	171	176	181	186	186
Total	612,095	682,790	684,306	648,698	681,195	683,299
Domestic Consumption						
North America	40,907	48,270	44,205	44,846	47,315	47,315
South America	24,346	24,494	25,708	25,523	25,640	26,040
European Union	116,536	127,000	125,000	122,000	126,500	127,000
Other Europe	5,495	5,560	5,469	5,306	5,370	5,620
Former Soviet Union - 12	75,356	76,041	78,200	75,575	77,845	78,645
Middle East	50,758	52,669	53,615	53,860	54,450	54,450
North Africa	35,825	37,475	39,350	39,425	41,250	41,250
Sub-Saharan Africa	15,696	18,605	20,416	20,175	20,376	20,632
East Asia	117,556	117,188	120,020	122,455	126,350	126,250
South Asia	109,638	105,304	113,861	117,401	120,280	120,280
Southeast Asia	11,009	12,054	13,288	14,952	14,960	14,960
Oceania	7,383	8,120	5,835	7,044	7,505	7,505
Others	3,300	3,372	3,309	3,389	3,365	3,365
Total	613,805	636,152	648,276	651,951	671,206	673,312
Ending Stocks						
North America	13,108	24,729	34,901	31,095	28,011	27,999
South America	4,571	4,015	4,481	3,904	4,329	3,894
European Union	12,429	18,937	16,157	11,693	12,958	12,679
Other Europe	1,817	2,176	2,177	1,495	1,575	1,465
Former Soviet Union - 12	13,878	22,148	26,629	23,370	27,160	27,635
Middle East	11,610	11,564	15,050	14,651	13,704	13,704
North Africa	9,186	9,216	11,148	11,633	11,733	12,133
Sub-Saharan Africa	1,203	1,694	2,560	1,687	1,630	1,756
East Asia	41,899	48,637	57,261	63,500	67,735	67,894
South Asia	10,079	17,359	21,430	21,420	21,250	21,250
Southeast Asia	2,771	2,713	2,915	3,795	3,825	3,825
Oceania	4,117	3,606	5,784	7,544	8,135	8,046
Others	352	304	412	339	320	320
Total	127,020	167,098	200,905	196,126	202,365	202,600

NOTES: Regional definitions appear on last page of this circular. Imports are reported on a trade year basis. All other data are reported using local marketing years.

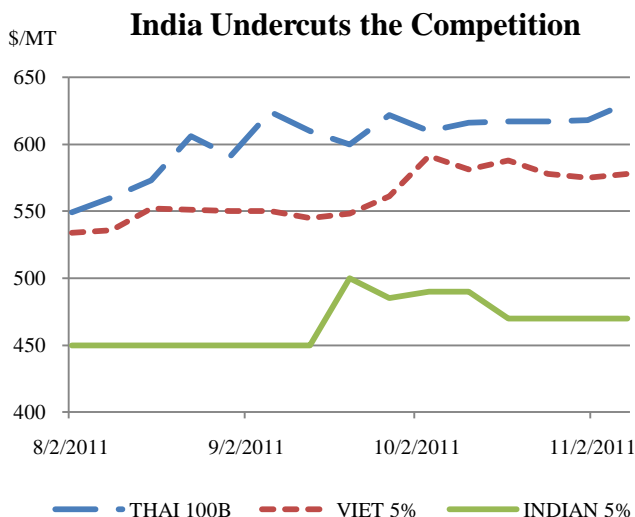
RICE: WORLD MARKETS AND TRADE

OVERVIEW

Global trade in 2011 is at a record level. Meanwhile, U.S. exports are expected to decline in 2011 and 2012. Global stocks are climbing for the fifth consecutive year. This month, Thai production is lowered nearly 1 million tons due to flooding, but Thai trade is unchanged.

PRICES

After banning non-basmati exports for nearly 4 years, India has re-entered the market with prices that undercut the competition. Quotes for Indian 5% are \$160 per ton below Thai 100B, \$140 per ton below U.S. #2/4, and more than \$100 below comparable quality rice from Vietnam and South America. India is gaining markets, but consumer preferences, established relationships, and logistics are discouraging some buyers from switching.



TRADE CHANGES

Selected Exporters

- **Brazil** is raised 150,000 tons in 2011 to a record 1.0 million on the pace of shipments. Likewise, 2012 exports are up 150,000 tons to 900,000.
- **Burma** is cut 100,000 tons to 900,000 for 2011 as flooding is expected to slow the pace of exports.
- **Cambodia** is lowered 200,000 tons to 800,000 for 2012 on flood-related production losses.

Selected Importers

- **Nigeria, Senegal, and Ghana** are boosted 100,000 tons each for 2011 to 2.3 million, 800,000, and 520,000, respectively, on trade data (record imports for Nigeria and Ghana).
- **Madagascar** is doubled to 200,000 tons for 2012 due to a smaller crop.

World Rice Trade
January/December Year, Thousand Metric Tons

	2007/08	2008/09	2009/10	2010/11	2011/12 Oct	2011/12 Nov
TY Exports						
Argentina	408	594	468	600	600	650
Australia	48	17	54	350	450	450
Brazil	511	591	430	1,000	750	900
Burma	541	1,052	445	900	800	750
Cambodia	500	800	1,000	1,000	1,000	800
China	969	783	619	500	600	600
Egypt	750	575	570	80	500	500
EU-27	157	150	282	300	350	350
Guyana	185	244	275	250	230	230
India	3,383	2,123	2,052	3,800	4,500	4,500
Japan	200	200	200	200	150	150
Pakistan	3,050	3,187	4,000	2,800	3,750	3,750
Thailand	10,011	8,570	9,047	10,500	8,000	8,000
Uruguay	742	926	808	975	850	850
Vietnam	4,649	5,950	6,734	7,000	6,700	6,700
Others	392	556	755	864	690	690
Subtotal	26,496	26,318	27,739	31,119	29,920	29,870
United States	3,267	3,017	3,868	3,250	3,050	3,050
World Total	29,763	29,335	31,607	34,369	32,970	32,920
TY Imports						
Bangladesh	1,658	150	660	1,400	750	750
Brazil	417	650	778	500	500	500
Canada	365	322	358	330	340	340
China	295	337	366	600	400	400
Cote d'Ivoire	800	800	840	900	950	950
Cuba	558	457	498	600	525	525
EU-27	1,520	1,383	1,216	1,150	1,070	1,070
Ghana	300	410	320	520	330	400
Hong Kong	399	397	390	410	415	415
Indonesia	350	250	1,150	2,200	1,400	1,400
Iran	1,430	1,470	1,000	1,400	1,500	1,500
Iraq	975	1,089	1,140	1,150	1,200	1,200
Japan	533	750	649	700	700	700
Korea, South	282	245	320	330	350	350
Malaysia	1,039	1,086	907	1,040	1,130	1,130
Mexico	578	610	598	655	700	700
Mozambique	300	385	325	400	375	375
Nigeria	1,800	2,000	2,000	2,300	2,150	2,200
Philippines	2,500	2,000	2,400	1,500	2,200	2,200
Saudi Arabia	1,166	1,072	1,069	1,100	1,150	1,150
Senegal	860	715	685	800	700	750
South Africa	650	745	733	760	750	750
Syria	230	250	315	350	350	350
United Arab Emirates	350	380	400	420	430	430
Vietnam	300	500	400	500	500	500
Others	8,199	7,882	8,799	8,887	8,647	8,872
Subtotal	27,854	26,335	28,316	30,902	29,512	29,907
Unaccounted	1,258	2,318	2,729	2,832	2,788	2,343
United States	651	682	562	635	670	670
World Total	29,763	29,335	31,607	34,369	32,970	32,920

TY=Trade Year, see Endnotes.

Note about dates: 2011/12 is calendar year 2012, 2010/11 is calendar year 2011, and so on.

World Rice Production, Consumption, and Stocks
Local Marketing Years, Thousand Metric Tons

	2007/08	2008/09	2009/10	2010/11	2011/12 Oct	2011/12 Nov
Milled Production						
Bangladesh	28,800	31,000	31,000	32,900	33,000	33,000
Brazil	8,199	8,570	7,929	9,257	8,840	8,840
Burma	10,730	10,150	10,550	10,750	11,000	10,500
Cambodia	4,238	4,520	4,780	5,200	5,200	4,800
China	130,224	134,330	136,570	137,000	139,000	141,000
Egypt	4,385	4,402	4,300	3,100	4,700	4,700
India	96,690	99,180	89,090	95,300	100,000	100,000
Indonesia	37,000	38,310	36,370	37,060	37,300	37,300
Japan	7,930	8,029	7,711	7,720	7,680	7,680
Korea, South	4,408	4,843	4,916	4,295	4,240	4,240
Pakistan	5,700	6,900	6,800	4,700	6,650	6,650
Philippines	10,479	10,755	9,772	10,539	10,650	10,650
Sri Lanka	2,200	2,227	2,650	2,400	2,900	2,900
Thailand	19,800	19,850	20,260	20,262	21,250	20,300
Vietnam	24,375	24,393	24,993	26,057	25,430	25,430
Others	30,824	33,493	35,701	37,083	37,556	36,929
Subtotal	425,982	440,952	433,392	443,623	455,396	454,919
United States	6,288	6,546	7,133	7,593	5,998	6,035
World Total	432,270	447,498	440,525	451,216	461,394	460,954
Consumption and Residual						
Bangladesh	30,747	31,000	31,600	33,800	34,200	34,200
Brazil	8,350	8,400	8,477	8,400	8,500	8,500
Burma	10,249	9,648	9,850	9,850	10,250	9,900
Cambodia	3,788	3,770	3,810	4,220	4,220	4,020
China	127,450	133,000	134,320	135,000	137,000	139,000
Egypt	3,340	4,000	3,670	3,400	3,800	3,800
India	90,466	91,090	85,690	90,000	94,000	94,000
Indonesia	36,350	37,100	38,000	39,000	39,550	39,550
Iran	3,000	3,100	2,950	2,900	3,000	3,000
Japan	8,162	8,326	8,200	8,125	8,250	8,250
Korea, South	4,670	4,788	4,765	4,797	4,800	4,800
Nigeria	3,910	4,100	4,450	4,890	4,949	4,879
Philippines	13,499	13,100	13,125	13,150	13,175	13,175
Thailand	9,600	9,500	10,200	10,500	10,900	10,700
Vietnam	19,400	19,000	19,150	19,300	19,550	19,550
Others	48,605	50,179	52,499	53,750	55,171	55,015
Subtotal	423,360	431,849	433,842	443,120	453,755	454,299
United States	4,042	4,082	4,016	4,358	4,028	4,027
World Total	427,402	435,931	437,858	447,478	457,783	458,326
Ending Stocks						
China	37,762	38,546	40,534	42,572	44,447	44,447
India	13,000	19,000	20,500	23,000	24,500	24,500
Indonesia	5,607	7,057	6,577	6,837	5,987	5,987
Japan	2,556	2,715	2,693	2,788	2,768	2,768
Philippines	4,418	4,673	3,520	2,409	2,084	2,084
Thailand	2,707	4,787	6,100	5,562	8,012	7,262
Vietnam	2,018	1,961	1,470	1,727	1,407	1,407
Others	10,963	11,817	11,622	11,529	11,042	10,906
Subtotal	79,031	90,556	93,016	96,424	100,247	99,361
United States	935	977	1,184	1,514	1,167	1,205
World Total	79,966	91,533	94,200	97,938	101,414	100,566

Note: All data are reported on a milled basis.

Regional Rice Imports, Production, Consumption, and Stocks

Thousand Metric Tons

	2007/08	2008/09	2009/10	2010/11	Oct 2011/12	Nov 2011/12
TY Imports						
North America	1,594	1,614	1,518	1,620	1,710	1,710
Caribbean	1,028	906	989	1,060	1,015	1,015
South America	1,105	1,116	1,377	1,252	1,272	1,272
Other Europe	98	126	126	135	135	135
Former Soviet Union - 12	361	412	401	377	310	360
Middle East	5,519	5,349	5,239	5,645	5,870	5,870
North Africa	275	155	345	390	375	375
Sub-Saharan Africa	7,569	8,175	8,248	9,215	8,810	9,155
East Asia	1,639	1,877	1,961	2,215	2,050	2,050
South Asia	2,208	528	1,013	1,835	1,090	1,090
Southeast Asia	4,640	4,542	5,562	5,838	5,735	5,735
Others	2,469	2,217	2,099	1,955	1,810	1,810
Total	28,505	27,017	28,878	31,537	30,182	30,577
Production						
North America	6,466	6,702	7,310	7,743	6,131	6,168
Caribbean	796	853	975	963	1,017	1,017
South America	15,461	16,217	15,444	17,200	16,098	16,199
European Union	1,757	1,620	1,887	1,867	1,899	1,899
Former Soviet Union - 12	988	906	1,095	1,223	1,262	1,212
Middle East	2,318	2,026	2,002	2,061	2,040	2,040
North Africa	4,406	4,423	4,335	3,140	4,740	4,740
Sub-Saharan Africa	8,108	10,268	11,409	12,319	12,797	12,269
East Asia	145,044	150,087	152,218	151,631	153,716	155,716
South Asia	136,570	142,432	132,775	138,475	145,800	145,800
Southeast Asia	109,790	111,279	110,269	113,279	114,461	112,461
Others	566	685	806	1,315	1,433	1,433
Total	432,270	447,498	440,525	451,216	461,394	460,954
Domestic Consumption						
North America	5,130	5,172	5,154	5,518	5,243	5,242
Central America	1,104	1,107	1,125	1,129	1,146	1,146
Caribbean	1,944	1,802	1,905	2,073	2,031	2,031
South America	14,194	14,534	14,697	14,723	14,792	14,792
European Union	3,185	2,925	2,860	2,900	2,830	2,830
Former Soviet Union - 12	1,303	1,242	1,279	1,355	1,382	1,382
Middle East	7,537	7,577	7,515	7,648	7,875	7,875
North Africa	3,636	4,133	4,038	3,790	4,195	4,195
Sub-Saharan Africa	16,523	17,434	19,444	21,207	21,548	21,472
East Asia	143,281	149,584	150,804	151,143	153,445	155,445
South Asia	129,831	131,370	126,348	132,420	137,350	137,350
Southeast Asia	97,272	96,739	98,984	100,864	102,801	101,901
Others	688	564	619	670	705	705
Total	425,628	434,183	434,772	445,440	455,343	456,366
Ending Stocks						
North America	1,128	1,143	1,354	1,664	1,308	1,346
Central America	265	218	244	252	256	254
Caribbean	134	109	129	146	152	152
South America	1,743	2,229	1,856	2,335	2,181	2,067
European Union	1,126	1,020	1,120	987	876	876
Middle East	2,172	1,999	1,654	1,512	1,462	1,462
North Africa	685	557	497	157	577	577
Sub-Saharan Africa	983	974	1,002	1,245	1,187	1,167
East Asia	41,284	42,488	45,038	46,971	48,612	48,612
South Asia	14,306	21,393	22,431	24,871	26,201	26,201
Southeast Asia	15,950	19,249	18,669	17,521	18,315	17,565
Oceania	52	26	51	97	107	107
Others	138	128	155	180	180	180
Total	79,966	91,533	94,200	97,938	101,414	100,566

NOTES: Regional definitions appear on last page of this circular. Imports are reported on a trade year basis. All other data are reported using local marketing years.

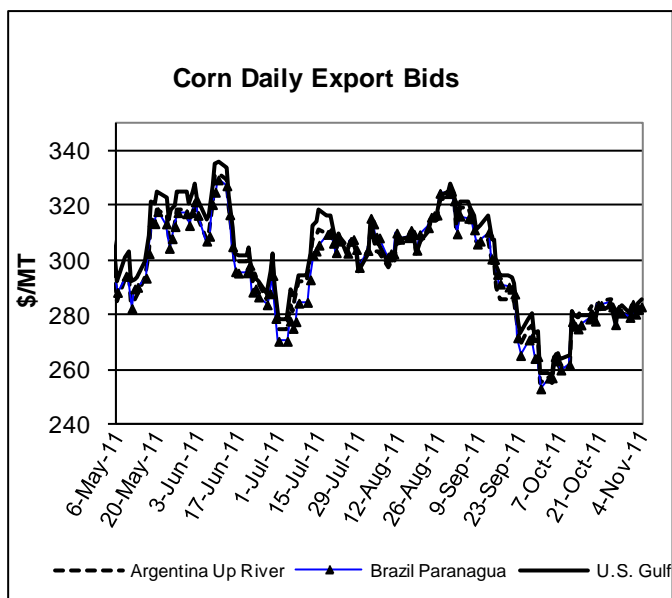
COARSE GRAINS: WORLD MARKETS AND TRADE

OVERVIEW

This month, global corn trade for 2011/12 is higher on stronger demand from China and Mexico. Greater exportable supplies from Argentina and EU are pressuring prices, while record Ukrainian corn exportable supplies significantly undercut U.S. prices. The season-average farm price for U.S. corn is unchanged but remains a record.

PRICES

U.S. corn export quotes increased throughout the past month. Prices ended at \$286/ton, \$20/ton higher than at the time of the October WASDE release. Prices have recovered from recent lows in mid-September. Argentine and Brazilian quotes followed suit.



TRADE CHANGES IN 2011/12

Selected Exporters

- **Argentine corn** is raised 500,000 tons to a record 18.5 million based on stronger global demand and prospects for a record crop.
- **EU corn** is raised 500,000 tons to 2.0 million considering the fast pace of export licenses and greater exportable supplies.
- **EU barley** is raised 500,000 tons to 2.5 million based on larger production and the pace of export licenses. (Exports for 10/11 are raised 200,000 tons to 4.5 million).
- **Argentine sorghum** is raised 300,000 tons to 2.3 million, the highest in 26 years, due to less competition from the United States and a larger crop.
- **U.S. sorghum** is cut 300,000 tons to 2.4 million, the lowest in 40 years, on tight supplies and slow sales.

Selected Importers

- **Chinese corn** is boosted 1.0 million tons to 3.0 million, the highest since 1994/95, based on recent purchases from the United States.
- **South Korean corn** is raised 300,000 tons to 8.0 million because of recent strong purchases of U.S. corn.
- **Uruguayan corn** is slashed by 350,000 tons to 50,000 as part of a series revision starting with 2005/06 and reflecting official import data.
- **EU corn** is cut 500,000 tons to 3.5 million on a slow pace of import licenses and a larger crop.
- **Mexican corn** is raised sharply by 600,000 tons to a record 9.8 million based on a smaller crop due to adverse weather conditions including late rains, drought, and frost.

TRADE CHANGES IN 2010/11

Large Late-Season Adjustments Reflect Reported Shipments:

Selected Exporters

- **U.S. corn** is lowered 250,000 tons to 45.3 million.
- **Brazilian corn** is raised 583,000 tons to 11.6 million.
- **Russian barley** is raised 200,000 tons to 1.0 million.

Selected Importers

- **Israeli corn** is lowered 200,000 tons to 1.1 million.
- **Jordanian corn** is doubled to 400,000 tons.
- **Tunisian corn** is raised 200,000 tons to 750,000.

World Coarse Grain Trade
October/September Year, Thousand Metric Tons

	2007/08	2008/09	2009/10	2010/11	2011/12 Oct	2011/12 Nov
TY Exports						
Argentina	17,786	10,241	19,028	18,605	22,005	22,805
Australia	3,895	4,873	4,414	4,860	5,210	5,210
Brazil	8,032	7,187	8,627	11,588	8,505	8,505
Canada	6,379	3,852	3,068	4,325	2,750	2,750
EU-27	4,679	4,338	4,267	5,730	3,755	4,755
India	5,539	2,642	2,072	2,870	2,300	2,300
Russia	1,419	4,945	2,528	1,065	2,215	2,215
Serbia	132	1,478	1,365	2,015	2,105	2,005
South Africa	1,145	2,159	1,634	2,861	2,340	2,325
Ukraine	5,909	11,380	10,936	7,420	16,405	16,405
Others	5,656	6,020	7,085	4,808	5,380	5,525
Subtotal	60,571	59,115	65,024	66,147	72,970	74,800
United States	68,289	51,558	53,989	49,320	43,950	43,650
World Total	128,860	110,673	119,013	115,467	116,920	118,450
TY Imports						
Algeria	2,433	2,067	2,576	2,975	2,675	2,850
Brazil	1,258	1,497	1,049	905	855	855
Canada	3,187	1,900	2,011	1,045	1,465	1,465
Chile	1,969	1,317	1,275	1,325	1,475	1,475
China	1,157	1,651	3,777	2,710	3,925	4,925
Colombia	3,603	3,483	4,102	4,155	4,455	4,455
Dominican Republic	1,074	973	1,071	1,050	1,050	1,050
Egypt	4,182	5,093	5,897	5,430	6,055	6,055
EU-27	19,892	2,988	3,012	8,320	4,165	3,665
Indonesia	294	317	1,321	2,500	1,500	1,500
Iran	3,900	5,000	5,100	3,900	3,900	3,900
Israel	1,776	1,295	1,592	1,460	1,410	1,410
Japan	19,210	19,611	19,198	18,596	19,135	19,135
Jordan	889	785	713	900	700	900
Korea, South	9,358	7,248	8,509	8,167	7,760	8,060
Malaysia	3,181	2,447	3,107	2,700	3,300	3,300
Mexico	11,011	10,465	10,914	10,525	11,425	12,025
Morocco	2,180	1,833	2,202	2,100	2,200	2,200
Peru	1,592	1,520	1,886	1,985	1,700	1,700
Saudi Arabia	9,968	9,186	9,076	7,905	9,005	9,205
Syria	2,561	2,834	2,274	1,900	2,500	2,500
Taiwan	4,684	4,658	4,663	4,450	4,550	4,550
Tunisia	1,182	875	1,202	1,200	850	1,000
Venezuela	1,103	1,340	2,198	1,200	1,600	1,600
Vietnam	700	1,250	1,600	1,200	1,300	1,300
Others	14,263	13,709	13,024	12,770	12,261	12,086
Subtotal	126,607	105,342	113,349	111,373	111,216	113,166
Unaccounted	-1,357	2,524	3,389	1,729	3,479	3,059
United States	3,610	2,807	2,275	2,365	2,225	2,225
World Total	128,860	110,673	119,013	115,467	116,920	118,450

TY=Trade Year, see Endnotes.

World Coarse Grains Production, Consumption, and Stocks
Local Marketing Years, Thousand Metric Tons

	2007/08	2008/09	2009/10	2010/11	2011/12 Oct	2011/12 Nov
Production						
Argentina	27,118	19,634	28,531	30,498	35,210	37,410
Australia	12,895	12,272	11,052	13,348	12,377	12,377
Brazil	60,520	53,486	58,412	59,929	63,333	63,333
Canada	27,841	27,184	22,477	22,263	21,227	21,227
China	158,863	172,424	169,604	183,405	188,310	190,810
Ethiopia	8,302	9,034	8,046	9,925	8,925	9,025
EU-27	136,580	162,102	155,038	139,460	143,554	145,664
India	40,630	39,550	33,890	42,000	40,370	40,370
Indonesia	8,500	8,700	6,900	6,800	8,100	8,100
Mexico	30,577	32,252	27,272	29,409	31,729	28,029
Nigeria	24,000	26,670	28,150	28,740	28,100	27,900
Russia	29,171	40,881	31,843	16,416	31,200	31,500
South Africa	13,690	13,084	13,881	12,203	12,993	13,016
Turkey	9,445	10,408	11,176	10,095	10,695	10,695
Ukraine	14,592	26,275	24,143	21,442	31,400	31,400
Others	128,212	131,525	137,129	144,208	142,428	141,702
Subtotal	730,936	785,481	767,544	770,141	809,951	812,558
United States	349,861	325,867	348,755	330,230	326,324	323,265
World Total	1,080,797	1,111,348	1,116,299	1,100,371	1,136,275	1,135,823
Domestic Consumption						
Argentina	9,367	8,768	10,054	11,033	11,425	11,725
Brazil	44,605	48,191	49,714	52,258	54,798	54,798
Canada	24,023	22,892	22,216	20,914	20,050	20,050
China	157,783	161,100	172,975	183,990	194,840	197,340
Egypt	11,477	12,162	13,072	13,195	11,500	11,500
EU-27	154,855	151,855	150,080	151,955	146,330	147,605
India	35,500	36,500	32,000	38,350	38,600	38,600
Japan	19,460	19,965	19,645	18,730	19,365	19,365
Mexico	40,235	42,060	40,885	39,045	41,920	40,420
Nigeria	24,000	26,550	27,950	28,550	28,050	28,050
Russia	28,617	33,011	30,440	18,156	27,900	28,100
Saudi Arabia	9,480	9,475	9,700	9,000	9,600	9,700
South Africa	10,143	10,468	10,833	10,938	11,358	11,168
Turkey	10,565	10,700	10,870	10,895	11,350	11,350
Ukraine	11,934	13,696	12,964	13,792	14,200	14,200
Others	190,764	195,855	198,155	207,831	210,658	210,893
Subtotal	783,380	805,611	819,353	829,788	855,507	858,128
United States	274,533	275,978	295,337	297,952	292,974	290,688
World Total	1,057,913	1,081,589	1,114,690	1,127,740	1,148,481	1,148,816
Ending Stocks						
Argentina	3,284	1,704	1,443	2,418	2,713	3,813
Brazil	12,703	12,450	10,287	9,858	11,243	10,743
Canada	4,010	6,326	5,650	3,529	3,421	3,421
China	39,404	52,158	52,359	54,308	51,414	52,438
EU-27	12,726	20,844	25,854	15,699	13,351	12,668
South Africa	3,266	4,327	5,367	3,727	3,951	3,650
Ukraine	1,659	2,374	2,209	2,059	3,169	3,169
Others	42,006	46,633	44,183	44,215	42,223	41,246
Subtotal	119,058	146,816	147,352	135,813	131,485	131,148
United States	45,059	47,060	48,133	32,303	24,494	23,975
World Total	164,117	193,876	195,485	168,116	155,979	155,123

Regional Coarse Grains Imports, Production, Consumption, and Stocks

Thousand Metric Tons

	2007/08	2008/09	2009/10	2010/11	Oct 2011/12	Nov 2011/12
TY Imports						
North America	17,808	15,172	15,200	13,935	15,115	15,715
Central America	2,681	2,491	2,537	2,755	2,950	2,950
Caribbean	2,239	2,011	2,139	2,200	2,210	2,210
South America	10,328	9,745	11,108	10,576	10,995	10,645
European Union	19,892	2,988	3,012	8,320	4,165	3,665
Former Soviet Union - 12	1,062	664	451	1,175	585	585
Middle East	21,810	21,247	21,318	18,172	19,650	20,050
North Africa	10,757	10,592	13,115	12,530	12,530	12,855
Sub-Saharan Africa	3,009	3,735	2,826	1,886	1,780	1,955
East Asia	34,662	33,349	36,276	34,053	35,500	36,800
Southeast Asia	4,746	5,405	6,725	7,115	7,115	7,115
Others	1,223	750	917	1,021	846	846
Total	130,217	108,149	115,624	113,738	113,441	115,391
Production						
North America	408,279	385,303	398,504	381,902	379,280	372,521
South America	99,917	84,977	98,905	103,212	111,859	114,059
European Union	136,580	162,102	155,038	139,460	143,554	145,664
Other Europe	9,370	12,357	11,800	12,190	12,030	11,630
Former Soviet Union - 12	54,154	79,162	68,179	47,690	74,845	75,745
Middle East	18,594	15,827	18,829	18,499	18,391	18,391
North Africa	9,894	10,219	14,891	12,359	9,932	9,782
Sub-Saharan Africa	90,972	96,200	97,111	105,727	103,114	102,261
East Asia	161,053	174,593	171,474	185,491	190,421	192,921
South Asia	47,105	45,688	40,331	48,358	46,653	46,653
Southeast Asia	26,882	27,710	25,386	27,186	28,870	28,870
Oceania	13,542	12,919	11,699	13,995	13,024	13,024
Others	4,455	4,291	4,152	4,302	4,302	4,302
Total	1,080,797	1,111,348	1,116,299	1,100,371	1,136,275	1,135,823
Domestic Consumption						
North America	338,791	340,930	358,438	357,911	354,944	351,158
South America	73,397	76,040	79,382	83,888	87,703	87,703
European Union	154,855	151,855	150,080	151,955	146,330	147,605
Other Europe	10,423	10,895	10,757	10,876	10,811	10,811
Former Soviet Union - 12	50,587	58,613	55,180	41,974	53,845	54,245
Middle East	38,192	37,833	38,469	37,894	38,984	39,284
North Africa	21,142	21,187	24,679	25,381	23,685	23,985
Sub-Saharan Africa	88,683	96,224	95,922	103,875	102,429	101,574
East Asia	192,632	195,849	207,611	217,512	228,549	231,349
South Asia	42,183	42,673	38,599	44,838	45,013	45,013
Southeast Asia	29,476	30,277	31,158	32,765	34,810	34,810
Oceania	7,666	7,897	7,727	8,477	8,377	8,577
Others	9,314	8,953	8,888	9,238	9,438	9,438
Total	1,057,341	1,079,226	1,106,890	1,126,584	1,144,918	1,145,552
Ending Stocks						
North America	53,809	58,625	55,724	38,537	30,814	29,635
South America	19,607	16,652	14,872	15,339	17,211	17,710
European Union	12,726	20,844	25,854	15,699	13,351	12,668
Other Europe	1,340	1,517	1,653	1,657	1,377	1,077
Former Soviet Union - 12	4,678	8,841	7,273	5,437	8,287	8,397
Middle East	8,663	8,496	9,390	8,354	7,246	7,346
North Africa	2,443	2,743	5,401	4,952	3,662	3,729
Sub-Saharan Africa	7,775	9,545	10,817	10,479	10,477	9,956
East Asia	43,975	55,897	55,831	57,687	54,557	55,794
South Asia	1,821	2,086	1,670	2,457	1,864	1,922
Southeast Asia	3,475	4,446	3,329	3,687	3,617	3,617
Oceania	2,737	3,342	2,882	3,053	2,734	2,490
Others	1,068	842	789	778	782	782
Total	164,117	193,876	195,485	168,116	155,979	155,123

NOTES: Regional definitions appear on last page of this circular. Imports are reported on a trade year basis. All other data are reported using local marketing years.

World Corn Trade
October/September Year, Thousand Metric Tons

	2007/08	2008/09	2009/10	2010/11	2011/12 Oct	2011/12 Nov
TY Exports						
Argentina	15,676	8,458	16,971	15,000	18,000	18,500
Brazil	7,883	7,178	8,623	11,583	8,500	8,500
Canada	944	366	184	1,700	500	500
EU-27	591	1,743	1,519	1,000	1,500	2,000
India	5,077	2,551	1,917	2,800	2,200	2,200
Paraguay	1,461	1,862	1,388	1,203	1,500	1,500
Russia	49	1,331	427	50	600	600
Serbia	128	1,467	1,343	2,000	2,100	2,000
South Africa	1,124	2,111	1,586	2,841	2,300	2,300
Ukraine	2,074	5,497	5,072	5,000	12,000	12,000
Others	2,616	3,641	4,199	2,790	3,105	3,250
Subtotal	37,623	36,205	43,229	45,967	52,305	53,350
United States	60,663	47,758	49,721	45,250	41,000	41,000
World Total	98,286	83,963	92,950	91,217	93,305	94,350
TY Imports						
Algeria	2,166	1,903	2,569	2,700	2,600	2,600
Canada	3,117	1,844	1,961	975	1,400	1,400
China	41	47	1,296	979	2,000	3,000
Colombia	3,267	3,068	3,651	3,600	3,900	3,900
Costa Rica	674	586	626	700	700	700
Cuba	811	708	736	800	800	800
Dominican Republic	1,074	973	1,071	1,050	1,050	1,050
Egypt	4,151	5,031	5,832	5,400	6,000	6,000
EU-27	14,016	2,754	2,931	7,300	4,000	3,500
Indonesia	294	317	1,321	2,500	1,500	1,500
Iran	2,900	3,600	4,300	3,500	3,500	3,500
Israel	1,374	846	1,053	1,050	1,100	1,100
Japan	16,614	16,533	15,979	15,655	16,100	16,100
Korea, South	9,311	7,188	8,461	8,107	7,700	8,000
Malaysia	3,181	2,447	3,107	2,700	3,300	3,300
Mexico	9,556	7,764	8,298	8,000	9,200	9,800
Morocco	1,858	1,566	1,802	1,800	1,900	1,900
Peru	1,469	1,429	1,782	1,900	1,600	1,600
Saudi Arabia	1,961	1,482	1,872	1,900	2,000	2,000
Syria	1,661	1,784	2,024	1,700	2,000	2,000
Taiwan	4,527	4,532	4,521	4,300	4,400	4,400
Thailand	425	900	500	600	800	800
Tunisia	804	646	866	750	650	800
Venezuela	1,103	1,336	2,198	1,200	1,600	1,600
Vietnam	700	1,250	1,600	1,200	1,300	1,300
Others	12,400	11,320	9,752	9,077	9,105	9,080
Subtotal	99,455	81,854	90,109	89,443	90,205	91,730
Unaccounted	-1,670	1,772	2,604	1,074	2,700	2,220
United States	501	337	237	700	400	400
World Total	98,286	83,963	92,950	91,217	93,305	94,350

TY=Trade Year, see Endnotes.

The large, negative Unaccounted in 2007/08 arises largely from timing differences between declared exports and Japan's and Korea's declared imports.

World Corn Production, Consumption, and Stocks
Local Marketing Years, Thousand Metric Tons

	2007/08	2008/09	2009/10	2010/11	2011/12 Oct	2011/12 Nov
Production						
Argentina	22,017	15,500	23,300	22,500	27,500	29,000
Brazil	58,600	51,000	56,100	57,500	61,000	61,000
Canada	11,649	10,592	9,561	11,714	10,000	10,000
China	152,300	165,914	163,974	177,245	182,000	184,500
EU-27	47,555	62,321	56,947	55,795	60,993	62,851
India	18,960	19,730	16,720	21,280	21,000	21,000
Indonesia	8,500	8,700	6,900	6,800	8,100	8,100
Mexico	23,600	24,226	20,374	21,130	24,000	20,500
Nigeria	6,500	7,970	8,950	9,340	8,700	8,700
Philippines	7,277	6,853	6,231	7,271	7,000	7,000
Russia	3,798	6,682	3,963	3,075	6,000	6,300
Serbia	4,054	6,130	6,400	6,800	6,700	6,300
South Africa	13,164	12,567	13,420	11,800	12,500	12,500
Ukraine	7,421	11,447	10,486	11,919	21,000	21,000
Vietnam	4,600	4,432	4,607	5,000	5,400	5,400
Others	73,685	78,142	79,125	83,353	82,391	82,151
Subtotal	463,680	492,206	487,058	512,522	544,284	546,302
United States	331,177	307,142	332,549	316,165	315,810	312,687
World Total	794,857	799,348	819,607	828,687	860,094	858,989
Total Consumption						
Argentina	6,800	6,400	6,900	7,100	7,600	7,800
Brazil	42,500	45,500	47,000	49,500	52,000	52,000
Canada	13,769	11,687	11,606	11,434	11,000	11,000
China	150,000	153,000	165,000	176,000	186,500	189,000
Egypt	10,400	11,100	12,000	12,100	10,400	10,400
EU-27	64,000	61,600	59,300	62,500	62,500	64,500
India	14,200	17,000	15,100	18,300	18,900	18,900
Indonesia	8,500	8,900	8,800	9,200	9,500	9,500
Japan	16,600	16,700	16,300	15,600	16,100	16,100
Korea, South	8,638	7,894	8,382	8,223	7,800	8,100
Mexico	32,000	32,400	30,200	28,700	32,100	30,300
Nigeria	6,550	7,900	8,800	9,200	8,700	8,900
Philippines	7,150	7,300	6,500	7,200	7,300	7,300
South Africa	9,600	9,900	10,300	10,400	10,800	10,600
Ukraine	5,750	5,850	5,700	6,550	7,750	7,750
Others	115,067	119,442	122,225	126,336	131,945	131,609
Subtotal	511,910	524,411	541,167	558,706	584,456	586,790
United States	261,632	259,272	281,590	284,990	282,207	279,667
World Total	773,542	783,683	822,757	843,696	866,663	866,457
Ending Stocks						
Argentina	2,190	976	892	1,302	1,712	2,512
Brazil	12,579	12,084	9,989	9,489	10,989	10,489
China	38,394	51,183	51,302	53,415	50,747	51,715
EU-27	4,417	6,149	5,208	4,803	5,904	4,654
Iran	2,474	2,502	2,795	2,345	1,695	1,695
South Africa	3,090	4,113	5,169	3,594	3,819	3,519
Ukraine	825	937	672	1,051	2,311	2,311
Others	26,308	26,749	24,640	24,380	24,010	23,257
Subtotal	90,277	104,693	100,667	100,379	101,187	100,152
United States	41,255	42,504	43,380	28,659	22,001	21,418
World Total	131,532	147,197	144,047	129,038	123,188	121,570

Regional Corn Imports, Production, Consumption, and Stocks

Thousand Metric Tons

	2007/08	2008/09	2009/10	2010/11	Oct 2011/12	Nov 2011/12
TY Imports						
North America	13,174	9,945	10,496	9,675	11,000	11,600
Central America	2,678	2,491	2,537	2,750	2,950	2,950
South America	9,115	8,238	9,469	8,551	9,030	8,680
European Union	14,016	2,754	2,931	7,300	4,000	3,500
Former Soviet Union - 12	651	393	254	350	200	200
Middle East	10,116	9,462	11,215	10,025	10,375	10,475
North Africa	9,593	9,574	11,725	11,125	11,700	11,850
Sub-Saharan Africa	2,174	2,915	1,909	1,261	1,135	1,360
East Asia	30,746	28,481	30,386	29,171	30,330	31,630
Southeast Asia	4,715	5,391	6,709	7,105	7,105	7,105
Caribbean	2,239	2,011	2,139	2,200	2,210	2,210
Others	739	536	576	630	570	570
Total	99,956	82,191	90,346	90,143	90,605	92,130
Production						
North America	366,426	341,960	362,484	349,009	349,810	343,187
South America	90,887	76,109	89,367	90,303	99,485	100,985
European Union	47,555	62,321	56,947	55,795	60,993	62,851
Other Europe	7,239	9,965	9,685	10,135	9,935	9,535
Former Soviet Union - 12	13,908	21,946	18,041	18,556	31,100	31,800
Middle East	6,062	6,529	6,163	5,806	5,798	5,798
North Africa	6,376	6,847	6,482	6,702	4,002	4,002
Sub-Saharan Africa	47,156	49,421	53,837	55,814	56,263	55,623
East Asia	154,009	167,580	165,379	178,883	183,651	186,151
South Asia	24,090	24,780	21,840	26,350	26,070	26,070
Central America	3,285	3,222	3,041	3,188	3,188	3,188
Southeast Asia	26,659	27,485	25,162	26,966	28,650	28,650
Others	1,205	1,183	1,179	1,180	1,149	1,149
Total	794,857	799,348	819,607	828,687	860,094	858,989
Domestic Consumption						
North America	307,401	303,359	323,396	325,124	325,307	320,967
South America	65,837	67,579	70,189	73,390	77,190	77,090
European Union	64,000	61,600	59,300	62,500	62,500	64,500
Other Europe	7,766	8,351	8,354	8,525	8,485	8,485
Former Soviet Union - 12	12,970	14,905	13,115	13,360	16,810	17,060
Middle East	15,775	15,835	16,625	16,686	17,005	17,105
North Africa	15,750	16,125	17,650	18,200	16,400	16,600
Sub-Saharan Africa	44,068	48,948	51,050	54,325	54,805	54,219
East Asia	181,503	184,015	195,811	205,903	216,455	219,255
South Asia	19,531	22,050	20,320	23,470	24,070	24,070
Southeast Asia	29,249	30,043	30,943	32,550	34,600	34,600
Central America	5,900	5,800	5,700	5,925	6,125	6,125
Others	3,406	3,235	3,250	3,375	3,350	3,350
Total	773,156	781,845	815,703	843,333	863,102	863,426
Ending Stocks						
North America	46,843	47,896	46,527	31,656	25,568	24,215
South America	18,141	15,282	13,782	13,500	15,671	15,870
European Union	4,417	6,149	5,208	4,803	5,904	4,654
Other Europe	1,026	1,184	1,369	1,339	1,059	759
Former Soviet Union - 12	1,180	1,750	1,356	1,717	3,542	3,802
Middle East	4,041	4,029	4,513	3,618	2,771	2,771
North Africa	1,583	2,202	2,394	2,161	1,403	1,403
Sub-Saharan Africa	6,027	7,591	9,664	8,449	8,514	8,158
East Asia	42,373	54,297	54,100	56,140	53,346	54,466
South Asia	1,338	1,498	992	1,177	1,010	1,072
Southeast Asia	3,475	4,446	3,329	3,687	3,617	3,617
Central America	765	613	498	486	484	484
Others	323	260	315	305	299	299
Total	131,532	147,197	144,047	129,038	123,188	121,570

NOTES: Regional definitions appear on last page of this circular. Imports are reported on a trade year basis. All other data are reported using local marketing years.

World Barley Trade
October/September Year, Thousand Metric Tons

	2007/08	2008/09	2009/10	2010/11	2011/12 Oct	2011/12 Nov
TY Exports						
Argentina	937	871	549	1,600	2,000	2,000
Australia	3,377	3,278	3,846	4,000	4,000	4,000
Canada	2,947	1,618	1,203	1,100	700	700
China	81	17	13	15	15	15
Croatia	3	4	7	5	5	5
Egypt	67	7	14	5	10	10
EU-27	3,888	2,374	2,389	4,500	2,000	2,500
India	371	37	31	20	50	50
Kazakhstan	806	314	354	200	250	250
Kenya	2	1	2	5	5	5
Moldova	9	31	43	25	25	25
Russia	1,277	3,598	2,086	1,000	1,600	1,600
Serbia	4	11	22	15	5	5
Turkey	0	3	801	50	150	150
Ukraine	3,814	5,871	5,752	2,400	4,400	4,400
Others	110	10	13	15	0	0
Subtotal	17,693	18,045	17,125	14,955	15,215	15,715
United States	901	158	152	220	200	200
World Total	18,594	18,203	17,277	15,175	15,415	15,915
TY Imports						
Algeria	266	164	6	275	75	250
Brazil	285	403	346	400	350	350
China	1,091	1,551	2,341	1,656	1,800	1,800
Colombia	256	211	237	250	250	250
Iran	1,000	1,400	800	400	400	400
Israel	251	367	491	275	250	250
Japan	1,361	1,346	1,411	1,361	1,300	1,300
Jordan	528	514	432	500	400	500
Kuwait	254	252	283	200	250	250
Libya	166	296	582	350	200	200
Morocco	313	263	256	200	200	200
Russia	179	39	13	400	200	200
Saudi Arabia	8,000	7,700	7,200	6,000	7,000	7,200
Syria	900	1,050	250	200	500	500
Tunisia	378	229	336	450	200	200
Others	2,242	1,519	1,484	1,775	1,365	1,365
Subtotal	17,470	17,304	16,468	14,692	14,740	15,215
Unaccounted	412	327	507	333	475	500
United States	712	572	302	150	200	200
World Total	18,594	18,203	17,277	15,175	15,415	15,915

TY=Trade Year, see Endnotes.

World Barley Production, Consumption, and Stocks
Local Marketing Years, Thousand Metric Tons

	2007/08	2008/09	2009/10	2010/11	2011/12 Oct	2011/12 Nov
Production						
Algeria	950	560	2,400	1,500	1,500	1,350
Argentina	1,600	2,110	1,356	2,950	3,300	3,300
Australia	7,160	7,997	7,865	9,300	8,200	8,200
Belarus	1,700	2,200	1,650	1,400	1,800	1,800
Canada	10,984	11,781	9,517	7,605	7,900	7,900
China	2,785	2,823	2,318	2,500	2,600	2,600
Ethiopia	1,355	1,484	1,569	1,400	1,400	1,400
EU-27	57,545	65,509	62,149	53,028	51,866	52,354
India	1,330	1,200	1,690	1,350	1,570	1,570
Iran	3,104	1,547	3,446	3,500	3,000	3,000
Kazakhstan	2,441	2,059	2,519	1,300	2,300	2,500
Morocco	763	1,272	3,800	2,570	2,400	2,400
Russia	15,663	23,148	17,881	8,350	16,500	16,500
Turkey	6,000	5,700	6,500	5,900	6,500	6,500
Ukraine	5,981	12,612	11,833	8,484	9,000	9,000
Others	9,103	7,988	9,002	9,023	9,363	9,386
Subtotal	128,464	149,990	145,495	120,160	129,199	129,760
United States	4,575	5,230	4,949	3,925	3,376	3,392
World Total	133,039	155,220	150,444	124,085	132,575	133,152
Total Consumption						
Algeria	1,100	1,100	1,350	1,500	1,600	1,700
Australia	3,100	4,000	4,500	4,700	4,600	4,800
Belarus	1,750	2,300	1,700	1,550	1,800	1,800
Canada	7,916	9,065	8,504	7,584	7,225	7,225
China	3,900	4,200	4,400	4,300	4,500	4,500
EU-27	54,200	57,000	56,500	56,400	52,500	52,000
India	1,000	1,000	1,500	1,350	1,500	1,500
Iran	3,600	3,550	3,700	3,700	3,600	3,600
Japan	1,600	1,550	1,550	1,550	1,525	1,525
Kazakhstan	1,700	1,850	2,000	1,235	1,875	2,025
Morocco	1,800	1,700	2,900	3,050	3,150	3,150
Russia	15,050	17,100	16,650	9,500	14,300	14,300
Saudi Arabia	7,430	7,425	7,425	6,625	7,125	7,225
Turkey	6,100	5,700	5,900	6,000	6,450	6,450
Ukraine	5,000	5,900	5,600	6,000	5,000	5,000
Others	14,699	15,172	15,307	15,176	15,078	15,188
Subtotal	129,702	139,248	139,737	130,643	132,028	132,338
United States	4,324	5,127	4,604	4,537	4,137	4,137
World Total	134,026	144,375	144,341	135,180	136,165	136,475
Ending Stocks						
Algeria	333	184	1,258	1,338	1,388	1,388
Australia	1,662	2,425	1,875	2,275	1,919	1,675
Canada	1,568	2,843	2,583	1,441	1,466	1,466
EU-27	5,705	10,916	15,532	7,460	4,913	5,414
Iran	725	622	1,268	1,468	1,268	1,268
Russia	1,153	3,813	2,395	1,386	2,186	1,986
Saudi Arabia	2,428	2,203	2,078	1,653	1,528	1,628
Others	5,303	6,269	7,806	7,249	6,624	6,867
Subtotal	18,877	29,275	34,795	24,270	21,292	21,692
United States	1,485	1,932	2,515	1,945	1,184	1,200
World Total	20,362	31,207	37,310	26,215	22,476	22,892

Regional Barley Imports, Production, Consumption, and Stocks

Thousand Metric Tons

	2007/08	2008/09	2009/10	2010/11	Oct 2011/12	Nov 2011/12
TY Imports						
North America	933	737	373	250	300	300
South America	751	810	772	915	775	775
European Union	519	156	66	200	100	100
Other Europe	207	82	153	235	135	135
Former Soviet Union - 12	404	269	195	675	385	385
Middle East	11,506	11,681	10,046	7,995	9,200	9,500
North Africa	1,152	973	1,223	1,300	725	900
Sub-Saharan Africa	154	120	54	85	60	60
East Asia	2,550	3,000	3,861	3,142	3,225	3,225
South Asia	6	48	10	30	30	30
Oceania	0	0	17	15	5	5
Total	18,182	17,876	16,770	14,842	14,940	15,415
Production						
North America	16,212	17,822	14,966	12,311	12,057	12,073
South America	2,697	3,156	2,443	4,131	4,511	4,511
European Union	57,545	65,509	62,149	53,028	51,866	52,354
Other Europe	1,412	1,613	1,440	1,380	1,420	1,420
Former Soviet Union - 12	27,112	41,639	35,500	20,959	31,100	31,300
Middle East	11,030	8,004	11,320	11,370	11,270	11,270
North Africa	2,493	2,347	7,324	4,572	4,845	4,695
Sub-Saharan Africa	1,733	1,826	1,950	1,755	1,770	1,793
East Asia	3,240	3,300	2,757	2,922	3,034	3,034
South Asia	2,005	1,607	2,330	1,957	2,102	2,102
Oceania	7,560	8,397	8,265	9,700	8,600	8,600
Total	133,039	155,220	150,444	124,085	132,575	133,152
Domestic Consumption						
North America	13,040	15,042	13,858	12,871	12,162	12,162
South America	2,562	2,703	2,933	3,180	3,255	3,255
European Union	54,200	57,000	56,500	56,400	52,500	52,000
Other Europe	1,640	1,705	1,592	1,565	1,540	1,540
Former Soviet Union - 12	24,875	28,844	27,590	19,831	24,515	24,665
Middle East	20,777	20,556	20,403	19,738	20,581	20,781
North Africa	4,352	3,987	5,847	5,970	6,100	6,200
Sub-Saharan Africa	1,789	1,955	1,978	1,860	1,845	1,855
East Asia	5,854	6,109	6,326	6,230	6,405	6,405
South Asia	1,680	1,438	2,163	1,987	2,062	2,062
Oceania	3,500	4,400	4,900	5,125	5,000	5,200
Total	134,269	143,739	144,090	134,757	135,965	136,125
Ending Stocks						
North America	3,281	5,112	5,231	3,600	2,895	2,911
South America	460	766	601	839	770	770
European Union	5,705	10,916	15,532	7,460	4,913	5,414
Other Europe	279	279	238	272	277	277
Former Soviet Union - 12	2,575	5,533	4,308	2,837	3,832	3,682
Middle East	4,507	4,389	4,837	4,691	4,430	4,530
North Africa	818	511	2,963	2,747	2,215	2,282
Sub-Saharan Africa	214	204	233	208	188	201
East Asia	775	949	1,228	1,047	769	886
South Asia	50	87	224	206	230	226
Oceania	1,698	2,461	1,915	2,308	1,957	1,713
Total	20,362	31,207	37,310	26,215	22,476	22,892

NOTES: Regional definitions appear on last page of this circular. Imports are reported on a trade year basis. All other data are reported using local marketing years.

World Sorghum Trade
October/September Year, Thousand Metric Tons

	2007/08	2008/09	2009/10	2010/11	2011/12 Oct	2011/12 Nov
TY Exports						
Argentina	1,172	907	1,507	2,000	2,000	2,300
Australia	340	1,360	350	700	1,000	1,000
China	223	32	41	50	50	50
India	91	54	124	50	50	50
Kenya	1	0	39	25	25	25
Nigeria	50	50	50	50	50	50
South Africa	21	48	48	20	40	25
Others	277	45	73	50	55	55
Subtotal	2,175	2,496	2,232	2,945	3,270	3,555
United States	6,664	3,598	4,074	3,800	2,700	2,400
World Total	8,839	6,094	6,306	6,745	5,970	5,955
TY Imports						
Chile	268	404	568	750	800	800
China	12	14	83	25	75	75
Colombia	66	202	212	300	300	300
Ethiopia	30	140	125	50	100	50
EU-27	5,267	66	7	800	50	50
Japan	1,084	1,629	1,649	1,419	1,600	1,600
Mexico	1,156	2,496	2,528	2,400	2,100	2,100
Morocco	9	4	144	100	100	100
Sudan	300	300	400	300	300	300
Taiwan	83	72	71	75	75	75
Others	784	430	526	382	320	320
Subtotal	9,059	5,757	6,313	6,601	5,820	5,770
Unaccounted	-221	334	-7	144	150	185
United States	1	3	0	0	0	0
World Total	8,839	6,094	6,306	6,745	5,970	5,955

TY=Trade Year, see Endnotes.

World Sorghum Production, Consumption, and Stocks
Local Marketing Years, Thousand Metric Tons

	2007/08	2008/09	2009/10	2010/11	2011/12 Oct	2011/12 Nov
Production						
Argentina	2,937	1,660	3,629	4,400	4,000	4,700
Australia	3,790	2,690	1,600	2,140	2,200	2,200
Brazil	1,441	2,004	1,854	1,794	1,700	1,700
Burkina	1,507	1,875	1,522	1,950	1,800	1,800
China	1,920	1,837	1,677	1,800	1,850	1,850
Egypt	900	900	900	900	900	900
Ethiopia	2,659	2,619	2,084	3,200	2,600	2,700
EU-27	525	517	621	621	762	751
India	7,930	7,250	6,700	6,740	6,800	6,800
Mali	901	930	980	925	925	850
Mexico	6,200	7,067	6,250	7,350	6,800	6,600
Niger	930	1,214	739	1,200	900	900
Nigeria	10,000	11,000	11,500	11,700	11,700	11,500
Sudan	4,500	4,192	2,630	4,606	4,200	3,800
Tanzania	900	700	710	850	850	740
Others	6,233	6,393	6,154	6,848	6,409	6,909
Subtotal	53,273	52,848	49,550	57,024	54,396	54,700
United States	12,636	11,998	9,728	8,773	6,193	6,246
World Total	65,909	64,846	59,278	65,797	60,589	60,946
Total Consumption						
Argentina	1,200	1,100	1,900	2,100	2,200	2,300
Australia	2,205	1,805	1,205	1,405	1,405	1,405
Brazil	1,375	1,875	1,875	1,775	1,775	1,775
Burkina	1,507	1,700	1,697	1,800	1,800	1,800
China	2,000	2,000	1,900	1,800	1,900	1,900
Egypt	900	950	900	900	900	900
Ethiopia	2,600	2,700	2,400	3,000	2,700	2,800
EU-27	6,305	905	630	1,555	830	805
India	7,900	7,200	6,600	6,700	6,800	6,800
Japan	1,100	1,600	1,650	1,420	1,600	1,600
Mali	901	930	980	925	925	850
Mexico	7,200	8,600	9,700	9,400	8,800	9,100
Niger	1,000	1,200	900	1,200	1,100	1,000
Nigeria	9,950	10,950	11,450	11,650	11,650	11,450
Sudan	5,000	4,500	3,400	4,500	4,500	4,100
Others	8,248	8,221	8,219	9,031	8,783	9,230
Subtotal	59,442	56,043	55,763	59,438	57,358	57,586
United States	5,081	8,319	5,859	5,306	3,683	3,937
World Total	64,523	64,362	61,622	64,744	61,041	61,523
Ending Stocks						
Argentina	746	194	152	552	452	752
Australia	791	676	771	506	501	501
China	637	456	275	250	225	225
Ethiopia	179	238	47	297	247	247
Mexico	373	1,336	414	764	254	364
Nigeria	200	200	200	200	200	200
Sudan	697	684	309	710	759	705
Others	1,084	1,357	971	1,264	1,073	949
Subtotal	4,707	5,141	3,139	4,543	3,711	3,943
United States	1,340	1,390	1,048	697	667	720
World Total	6,047	6,531	4,187	5,240	4,378	4,663

Regional Sorghum Imports, Production, Consumption, and Stocks

Thousand Metric Tons

	2007/08	2008/09	2009/10	2010/11	Oct 2011/12	Nov 2011/12
TY Imports						
North America	1,157	2,499	2,528	2,400	2,100	2,100
South America	432	665	848	1,085	1,165	1,165
European Union	5,267	66	7	800	50	50
Other Europe	142	0	17	25	20	20
Middle East	156	81	48	132	55	55
North Africa	11	45	166	105	105	105
Sub-Saharan Africa	663	667	842	515	560	510
East Asia	1,196	1,719	1,806	1,524	1,755	1,755
Southeast Asia	31	14	16	10	10	10
Others	5	4	35	5	0	0
Total	9,060	5,760	6,313	6,601	5,820	5,770
Production						
North America	18,836	19,065	15,978	16,123	12,993	12,846
Central America	396	298	326	329	329	329
Caribbean	128	128	128	128	128	128
South America	5,102	4,719	6,153	7,126	6,522	7,222
European Union	525	517	621	621	762	751
Middle East	859	654	602	640	640	640
North Africa	915	915	915	915	915	915
Sub-Saharan Africa	25,280	26,553	24,359	29,020	27,235	27,050
East Asia	1,940	1,857	1,697	1,820	1,870	1,870
South Asia	8,081	7,395	6,845	6,885	6,945	6,945
Southeast Asia	57	55	54	50	50	50
Oceania	3,790	2,690	1,600	2,140	2,200	2,200
Others	0	0	0	0	0	0
Total	65,909	64,846	59,278	65,797	60,589	60,946
Domestic Consumption						
North America	12,281	16,919	15,559	14,706	12,483	13,037
Central America	375	315	325	325	325	325
Caribbean	128	128	128	128	128	128
South America	3,793	4,766	5,318	5,769	5,952	6,052
European Union	6,305	905	630	1,555	830	805
Middle East	970	749	694	777	700	700
North Africa	924	965	1,012	1,040	1,015	1,015
Sub-Saharan Africa	26,013	26,891	25,909	28,527	27,908	27,680
East Asia	3,222	3,699	3,643	3,320	3,600	3,600
South Asia	8,053	7,349	6,780	6,845	6,945	6,945
Southeast Asia	61	64	45	45	40	40
Oceania	2,205	1,805	1,205	1,405	1,405	1,405
Others	142	0	17	25	20	20
Total	64,472	64,555	61,265	64,467	61,351	61,752
Ending Stocks						
North America	1,713	2,726	1,462	1,461	921	1,084
Central America	45	27	28	32	31	31
South America	880	491	394	848	668	968
European Union	71	34	24	24	14	15
Middle East	76	62	18	13	8	8
North Africa	41	29	43	43	43	43
Sub-Saharan Africa	1,514	1,727	896	1,798	1,751	1,573
East Asia	733	578	397	371	347	346
South Asia	183	181	154	144	94	94
Oceania	791	676	771	506	501	501
Others	0	0	0	0	0	0
Total	6,047	6,531	4,187	5,240	4,378	4,663

NOTES: Regional definitions appear on last page of this circular. Imports are reported on a trade year basis. All other data are reported using local marketing years.

World Oats Trade
October/September Year, Thousand Metric Tons

	2007/08	2008/09	2009/10	2010/11	2011/12 Oct	2011/12 Nov
TY Exports						
Argentina	1	5	1	5	5	5
Australia	174	161	211	150	200	200
Brazil	4	9	4	5	5	5
Canada	2,321	1,792	1,539	1,350	1,450	1,450
Chile	17	31	37	125	75	75
EU-27	133	103	216	150	150	150
Russia	7	2	4	5	5	5
Others	33	6	19	15	5	5
Subtotal	2,690	2,109	2,031	1,805	1,895	1,895
United States	53	38	38	45	45	45
World Total	2,743	2,147	2,069	1,850	1,940	1,940
TY Imports						
Argentina	1	2	2	5	5	5
Bosnia and Herzegovina	3	2	3	5	5	5
Canada	17	14	21	20	15	15
China	13	39	57	50	50	50
Colombia	14	2	2	5	5	5
Ecuador	15	14	11	10	10	10
EU-27	2	4	2	5	5	5
Japan	68	46	56	60	60	60
Mexico	131	82	46	75	75	75
Norway	47	8	34	10	15	15
South Africa	18	33	21	25	25	25
Switzerland	56	52	49	50	50	50
Turkey	11	6	0	5	5	5
Uruguay	0	11	4	5	5	5
Others	12	3	2	5	0	0
Subtotal	408	318	310	335	330	330
Unaccounted	91	42	152	140	110	110
United States	2,244	1,787	1,607	1,375	1,500	1,500
World Total	2,743	2,147	2,069	1,850	1,940	1,940

TY=Trade Year, see Endnotes.

World Oats Production, Consumption, and Stocks
Local Marketing Years, Thousand Metric Tons

	2007/08	2008/09	2009/10	2010/11	2011/12 Oct	2011/12 Nov
Production						
Algeria	80	80	140	140	140	140
Argentina	472	291	182	600	345	345
Australia	1,502	1,160	1,180	1,500	1,600	1,600
Belarus	600	600	800	700	800	800
Brazil	238	239	253	379	370	370
Canada	4,696	4,273	2,906	2,480	2,900	2,900
Chile	384	344	381	564	500	500
China	350	300	410	420	420	420
EU-27	8,634	8,935	8,579	7,370	7,766	8,013
Kazakhstan	230	138	204	160	160	160
Mexico	124	148	148	148	148	148
Norway	276	328	245	245	245	245
Russia	5,384	5,835	5,401	3,218	5,000	5,000
Turkey	189	196	218	210	210	210
Ukraine	544	944	731	458	550	550
Others	457	457	475	475	475	475
Subtotal	24,160	24,268	22,253	19,067	21,629	21,876
United States	1,313	1,294	1,351	1,178	784	779
World Total	25,473	25,562	23,604	20,245	22,413	22,655
Total Consumption						
Algeria	86	80	140	141	140	140
Argentina	450	300	200	600	350	350
Australia	1,335	1,035	975	1,300	1,350	1,350
Belarus	575	600	800	700	825	825
Brazil	240	225	250	370	360	360
Canada	1,935	1,766	1,753	1,525	1,500	1,500
Chile	350	325	350	450	450	450
China	375	350	450	450	500	500
EU-27	8,650	8,500	8,100	7,800	7,600	7,800
Kazakhstan	215	135	210	150	160	160
Mexico	235	210	235	195	220	220
Norway	340	320	285	255	265	265
Russia	5,300	5,600	5,500	3,450	4,900	4,900
Turkey	200	210	215	215	215	215
Ukraine	550	925	725	475	550	550
Others	626	608	622	638	638	638
Subtotal	21,785	21,213	20,878	18,705	20,106	20,306
United States	3,161	2,968	3,011	2,789	2,654	2,654
World Total	24,946	24,181	23,889	21,494	22,760	22,960
Ending Stocks						
Argentina	100	89	70	70	65	65
Australia	183	147	144	194	244	244
Belarus	75	75	75	75	50	50
Canada	950	1,527	1,170	769	734	734
China	77	66	83	103	73	73
EU-27	625	972	1,224	687	708	755
Russia	266	499	397	160	255	255
Others	167	197	179	219	164	164
Subtotal	2,443	3,572	3,342	2,277	2,293	2,340
United States	969	1,221	1,166	982	619	614
World Total	3,412	4,793	4,508	3,259	2,912	2,954

Regional Oats Imports, Production, Consumption, and Stocks

Thousand Metric Tons

	2007/08	2008/09	2009/10	2010/11	Oct 2011/12	Nov 2011/12
TY Imports						
North America	2,392	1,883	1,674	1,470	1,590	1,590
South America	30	32	19	25	25	25
European Union	2	4	2	5	5	5
Other Europe	108	62	87	70	70	70
Former Soviet Union - 12	7	0	0	0	0	0
Middle East	11	6	0	5	5	5
North Africa	1	0	1	0	0	0
Sub-Saharan Africa	18	33	21	25	25	25
East Asia	81	85	113	110	110	110
Oceania	2	0	0	0	0	0
Total	2,652	2,105	1,917	1,710	1,830	1,830
Production						
North America	6,133	5,715	4,405	3,806	3,832	3,827
South America	1,117	897	857	1,584	1,256	1,256
European Union	8,634	8,935	8,579	7,370	7,766	8,013
Other Europe	553	605	522	522	522	522
Former Soviet Union - 12	6,763	7,522	7,141	4,541	6,515	6,515
Middle East	189	196	218	210	210	210
North Africa	110	110	170	170	170	170
Sub-Saharan Africa	45	45	45	45	45	45
East Asia	352	302	412	422	422	422
Oceania	1,577	1,235	1,255	1,575	1,675	1,675
Total	25,473	25,562	23,604	20,245	22,413	22,655
Domestic Consumption						
North America	5,331	4,944	4,999	4,509	4,374	4,374
South America	1,091	896	857	1,481	1,221	1,221
European Union	8,650	8,500	8,100	7,800	7,600	7,800
Other Europe	680	647	620	592	597	597
Former Soviet Union - 12	6,645	7,265	7,240	4,780	6,440	6,440
Middle East	200	210	215	215	215	215
North Africa	116	110	170	171	170	170
Sub-Saharan Africa	55	75	65	70	70	70
East Asia	445	400	505	510	565	565
Oceania	1,410	1,110	1,050	1,375	1,425	1,425
Total	24,623	24,157	23,821	21,503	22,677	22,877
Ending Stocks						
North America	1,927	2,755	2,341	1,759	1,364	1,359
South America	126	113	95	152	102	102
European Union	625	972	1,224	687	708	755
Other Europe	34	53	45	45	40	40
Former Soviet Union - 12	410	659	541	282	347	347
Middle East	5	2	5	5	5	5
North Africa	1	1	1	1	1	1
Sub-Saharan Africa	20	23	24	24	24	24
East Asia	81	68	88	110	77	77
Oceania	183	147	144	194	244	244
Total	3,412	4,793	4,508	3,259	2,912	2,954

NOTES: Regional definitions appear on last page of this circular. Imports are reported on a trade year basis. All other data are reported using local marketing years.

World Rye Trade
October/September Year, Thousand Metric Tons

	2007/08	2008/09	2009/10	2010/11	2011/12 Oct	2011/12 Nov
TY Exports						
Belarus	75	50	25	200	75	75
Canada	167	76	142	175	100	100
EU-27	59	114	136	75	100	100
Russia	86	14	11	10	10	10
Others	3	6	93	15	0	0
Subtotal	390	260	407	475	285	285
United States	8	6	4	5	5	5
World Total	398	266	411	480	290	290
TY Imports						
Croatia	2	2	2	1	1	1
EU-27	88	8	6	15	10	10
Israel	7	11	9	10	10	10
Japan	83	57	103	101	75	75
Korea, South	6	7	7	5	5	5
Norway	11	11	14	10	10	10
Switzerland	4	4	6	5	5	5
Turkey	14	6	0	5	5	5
Others	0	3	2	150	0	0
Subtotal	215	109	149	302	121	121
Unaccounted	31	49	133	38	44	44
United States	152	108	129	140	125	125
World Total	398	266	411	480	290	290

TY=Trade Year, see Endnotes.

World Rye Production, Consumption, and Stocks
Local Marketing Years, Thousand Metric Tons

	2007/08	2008/09	2009/10	2010/11	2011/12 Oct	2011/12 Nov
Production						
Argentina	77	55	55	40	50	50
Belarus	1,300	1,500	1,700	1,200	1,500	1,500
Canada	252	316	280	232	202	202
EU-27	7,679	9,262	9,952	7,796	7,459	6,884
Russia	3,909	4,505	4,333	1,642	3,000	3,000
Turkey	241	247	343	270	270	270
Ukraine	562	1,051	954	464	550	550
Others	209	190	202	176	176	176
Subtotal	14,229	17,126	17,819	11,820	13,207	12,632
United States	160	203	178	189	161	161
World Total	14,389	17,329	17,997	12,009	13,368	12,793
Total Consumption						
Argentina	77	55	55	40	50	50
Belarus	1,200	1,400	1,600	1,150	1,400	1,400
Canada	143	152	140	139	100	100
EU-27	7,300	8,750	9,550	8,200	7,800	7,300
Japan	90	65	90	100	75	75
Kazakhstan	65	40	75	50	50	50
Norway	61	59	40	37	37	37
Russia	3,750	4,400	4,325	1,875	3,000	3,000
Turkey	250	275	340	265	270	270
Ukraine	550	800	800	650	600	600
Others	122	127	124	120	120	120
Subtotal	13,663	16,181	17,209	12,728	13,531	13,031
United States	335	292	273	330	293	293
World Total	13,998	16,473	17,482	13,058	13,824	13,324
Ending Stocks						
Belarus	218	268	343	193	218	218
Canada	35	123	139	41	43	43
EU-27	1,017	1,424	1,727	1,236	713	730
Japan	13	5	18	19	18	19
Russia	223	312	308	225	215	215
Turkey	34	14	17	27	32	32
Ukraine	68	313	411	177	127	127
Others	5	7	7	7	7	7
Subtotal	1,613	2,466	2,970	1,925	1,373	1,391
United States	10	13	24	20	23	23
World Total	1,623	2,479	2,994	1,945	1,396	1,414

Regional Rye Imports, Production, Consumption, and Stocks

Thousand Metric Tons

	2007/08	2008/09	2009/10	2010/11	Oct 2011/12	Nov 2011/12
TY Imports						
North America	152	108	129	140	125	125
South America	0	0	0	0	0	0
European Union	88	8	6	15	10	10
Other Europe	17	18	22	16	16	16
Former Soviet Union - 12	0	2	2	150	0	0
Middle East	21	17	9	15	15	15
Sub-Saharan Africa	0	0	0	0	0	0
East Asia	89	64	110	106	80	80
Oceania	0	0	0	0	0	0
Total	367	217	278	442	246	246
Production						
North America	412	519	458	421	363	363
South America	84	63	61	45	55	55
European Union	7,679	9,262	9,952	7,796	7,459	6,884
Other Europe	111	119	98	98	98	98
Former Soviet Union - 12	5,839	7,096	7,062	3,356	5,100	5,100
Middle East	241	247	343	270	270	270
Sub-Saharan Africa	3	3	3	3	3	3
East Asia	0	0	0	0	0	0
Oceania	20	20	20	20	20	20
Total	14,389	17,329	17,997	12,009	13,368	12,793
Domestic Consumption						
North America	478	444	413	469	393	393
South America	84	63	61	45	55	55
European Union	7,300	8,750	9,550	8,200	7,800	7,300
Other Europe	140	137	119	114	114	114
Former Soviet Union - 12	5,565	6,640	6,800	3,725	5,050	5,050
Middle East	257	286	349	275	280	280
Sub-Saharan Africa	3	3	3	3	3	3
East Asia	96	72	97	105	80	80
Oceania	20	20	20	20	20	20
Total	13,943	16,415	17,412	12,956	13,795	13,295
Ending Stocks						
North America	45	136	163	61	66	66
South America	0	0	0	0	0	0
European Union	1,017	1,424	1,727	1,236	713	730
Other Europe	1	1	1	1	1	1
Former Soviet Union - 12	513	899	1,068	601	566	566
Middle East	34	14	17	27	32	32
Sub-Saharan Africa	0	0	0	0	0	0
East Asia	13	5	18	19	18	19
Oceania	0	0	0	0	0	0
Total	1,623	2,479	2,994	1,945	1,396	1,414

NOTES: Regional definitions appear on last page of this circular. Imports are reported on a trade year basis. All other data are reported using local marketing years.



HISTORICAL DATA SERIES FOR SELECTED REGIONS AND COUNTRIES

CONTENTS

European Union: Grain Supply and Demand.....	34
China: Grain Supply and Demand.....	35
Other Europe: Grain Supply and Demand	36
Former Soviet Union: Grain Supply and Demand	37
Wheat Supply and Disappearance: Selected Exporters	41
Corn Supply and Disappearance: Selected Exporters	43
Barley Supply and Disappearance: Selected Exporters.....	45
Sorghum Supply and Disappearance: Selected Exporters.....	46
U.S. Grains: Supply and Distribution	47
Total Wheat and Coarse Grains: Supply and Demand.....	48
World Wheat and Coarse Grains: Supply and Demand	49
World Corn and Barley: Supply and Demand	50
World Rice: Supply and Demand.....	51

European Union: Grain Supply and Demand

Wheat and Coarse Grains Millions of Metric Tons/Hectares

	Area Harvested	Yield	Production	Imports	Exports	Feed Dom. Consumpti	Domestic Consumpti	Ending Stocks
Wheat								
2000/01	26.5	5.0	131.7	3.5	15.7	56.3	118.4	17.5
2001/02	25.9	4.8	123.4	8.7	12.8	56.5	118.5	18.3
2002/03	26.4	5.0	132.6	10.7	18.1	60.0	125.0	18.5
2003/04	24.3	4.5	110.6	7.4	9.8	52.4	115.1	11.5
2004/05	26.0	5.7	146.9	7.1	14.7	59.2	123.2	27.5
2005/06	25.8	5.1	132.4	6.8	15.7	63.0	127.5	23.4
2006/07	24.5	5.1	124.9	5.2	13.8	60.2	125.5	14.2
2007/08	24.7	4.9	120.1	6.9	12.3	52.4	116.5	12.4
2008/09	26.7	5.7	151.1	7.7	25.4	60.5	127.0	18.9
2009/10	25.8	5.4	138.8	5.5	22.1	57.5	125.0	16.2
2010/11	26.1	5.2	135.7	4.7	22.9	52.5	122.0	11.7
2011/12	25.8	5.3	137.5	7.5	17.0	56.5	127.0	12.7
Coarse Grains								
2000/01	33.2	4.2	140.3	4.1	9.3	105.5	139.7	18.4
2001/02	33.7	4.5	150.5	3.9	6.7	108.1	143.8	22.4
2002/03	32.8	4.5	148.4	4.4	7.6	109.5	145.0	22.6
2003/04	32.7	4.0	131.8	8.2	4.2	109.7	145.3	13.1
2004/05	33.4	5.0	166.7	3.0	4.9	116.6	152.6	25.3
2005/06	32.7	4.5	146.8	2.8	4.4	110.0	148.1	22.4
2006/07	32.0	4.3	137.9	8.1	4.7	110.9	148.4	15.3
2007/08	32.2	4.2	136.6	20.3	4.6	119.6	154.9	12.7
2008/09	33.6	4.8	162.1	3.4	5.6	114.0	151.9	20.8
2009/10	32.5	4.8	155.0	3.0	3.0	112.6	150.1	25.9
2010/11	30.2	4.6	139.5	8.4	6.1	114.1	152.0	15.7
2011/12	30.2	4.8	145.7	3.7	4.8	109.4	147.6	12.7
Wheat and Coarse Grains								
2000/01	59.7	4.6	272.0	7.6	24.9	161.8	258.0	35.9
2001/02	59.6	4.6	273.9	12.7	19.4	164.6	262.3	40.7
2002/03	59.2	4.7	281.0	15.0	25.7	169.5	270.0	41.1
2003/04	57.0	4.2	242.4	15.6	14.0	162.1	260.4	24.7
2004/05	59.4	5.3	313.6	10.1	19.6	175.8	275.9	52.8
2005/06	58.5	4.8	279.1	9.6	20.1	173.0	275.6	45.8
2006/07	56.4	4.7	262.8	13.3	18.5	171.1	273.9	29.5
2007/08	56.9	4.5	256.7	27.2	16.9	172.0	271.4	25.2
2008/09	60.2	5.2	313.2	11.2	30.9	174.5	278.9	39.8
2009/10	58.3	5.0	293.9	8.6	25.1	170.1	275.1	42.0
2010/11	56.3	4.9	275.1	13.1	28.9	166.6	274.0	27.4
2011/12	55.9	5.1	283.2	11.2	21.8	165.9	274.6	25.3

China: Grain Supply and Demand

Wheat and Coarse Grains Millions of Metric Tons/Hectares

	Area Harvested	Yield	Production	Imports	Exports	Feed Dom. Consumpti	Domestic Consumpti	Ending Stocks
Wheat								
2000/01	26.7	3.7	99.6	0.2	0.6	10.0	110.3	91.9
2001/02	24.6	3.8	93.9	1.1	1.5	9.0	108.7	76.6
2002/03	23.9	3.8	90.3	0.4	1.7	6.5	105.2	60.4
2003/04	22.0	3.9	86.5	3.7	2.8	6.0	104.5	43.3
2004/05	21.6	4.3	92.0	6.7	1.2	4.0	102.0	38.8
2005/06	22.8	4.3	97.4	1.1	1.4	3.5	101.5	34.5
2006/07	23.6	4.6	108.5	0.4	2.8	4.0	102.0	38.6
2007/08	23.7	4.6	109.3	0.0	2.8	8.0	106.0	39.1
2008/09	23.6	4.8	112.5	0.5	0.7	8.0	105.5	45.8
2009/10	24.3	4.7	115.1	1.4	0.9	10.0	107.0	54.4
2010/11	24.3	4.7	115.2	0.9	0.9	13.0	109.5	60.1
2011/12	24.4	4.8	117.0	1.5	1.0	17.0	113.0	64.6
Coarse Grains								
2000/01	26.5	4.3	114.0	2.4	7.3	94.4	130.4	102.8
2001/02	27.3	4.5	122.4	2.0	8.6	96.3	133.0	85.6
2002/03	27.8	4.7	130.6	1.8	15.3	98.4	136.3	66.5
2003/04	26.8	4.6	124.0	1.5	7.7	99.1	138.3	45.9
2004/05	28.0	4.9	138.3	2.1	7.6	100.3	141.1	37.6
2005/06	28.8	5.1	147.8	2.3	3.8	103.4	147.2	36.7
2006/07	30.9	5.1	159.1	1.2	5.5	104.6	153.5	38.0
2007/08	31.8	5.0	158.9	1.2	0.9	106.3	157.8	39.4
2008/09	32.2	5.4	172.4	1.7	0.2	108.3	161.1	52.2
2009/10	33.4	5.1	169.6	3.8	0.2	118.4	173.0	52.4
2010/11	34.8	5.3	183.4	2.7	0.2	124.3	184.0	54.3
2011/12	35.5	5.4	190.8	4.9	0.3	132.4	197.3	52.4
Wheat and Coarse Grains								
2000/01	53.1	4.0	213.6	2.6	7.9	104.4	240.7	194.7
2001/02	52.0	4.2	216.3	3.1	10.1	105.3	241.7	162.2
2002/03	51.7	4.3	220.9	2.2	17.1	104.9	241.5	126.8
2003/04	48.8	4.3	210.5	5.3	10.5	105.1	242.8	89.2
2004/05	49.6	4.6	230.2	8.8	8.8	104.3	243.1	76.4
2005/06	51.6	4.7	245.2	3.4	5.2	106.9	248.7	71.2
2006/07	54.5	4.9	267.6	1.5	8.2	108.6	255.5	76.6
2007/08	55.5	4.8	268.2	1.2	3.7	114.3	263.8	78.5
2008/09	55.8	5.1	284.9	2.1	0.9	116.3	266.6	98.0
2009/10	57.7	4.9	284.7	5.2	1.1	128.4	280.0	106.8
2010/11	59.1	5.1	298.6	3.6	1.1	137.3	293.5	114.4
2011/12	59.9	5.1	307.8	6.4	1.3	149.4	310.3	117.0

Other Europe: Grain Supply and Demand

Wheat and Coarse Grains Millions of Metric Tons/Hectares

	Area Harvested	Yield	Production	Imports	Exports	Feed Dom. Consumpti	Domestic Consumpti	Ending Stocks
Wheat								
2000/01	1.4	3.3	4.6	1.2	0.3	0.7	5.5	1.4
2001/02	1.4	3.4	4.9	1.8	0.6	0.9	5.9	1.5
2002/03	1.4	3.5	4.9	1.4	0.6	0.9	5.6	1.5
2003/04	1.2	3.1	3.9	1.5	0.1	0.7	5.4	1.3
2004/05	1.4	4.0	5.4	1.5	0.3	1.0	5.9	2.0
2005/06	1.1	3.7	4.2	1.5	0.2	0.9	5.8	1.8
2006/07	1.2	3.6	4.3	1.5	0.6	0.7	5.3	1.7
2007/08	1.2	3.7	4.4	1.9	0.8	0.8	5.5	1.8
2008/09	1.1	4.2	4.7	1.7	0.5	1.0	5.6	2.2
2009/10	1.2	3.8	4.6	1.7	0.8	0.8	5.5	2.2
2010/11	1.1	3.6	3.8	1.6	0.8	0.7	5.3	1.5
2011/12	1.1	4.0	4.4	1.7	0.6	0.9	5.6	1.5
Coarse Grains								
2000/01	2.6	3.1	8.1	1.0	0.0	7.7	9.0	1.0
2001/02	2.7	4.1	10.9	0.8	0.2	9.8	11.1	1.4
2002/03	2.7	4.4	11.7	0.6	0.6	9.9	11.4	1.8
2003/04	2.7	3.5	9.2	0.8	0.1	9.5	10.8	1.1
2004/05	2.7	4.8	12.8	0.6	0.6	10.8	12.2	1.6
2005/06	2.7	4.8	12.7	0.7	1.4	10.7	12.0	1.5
2006/07	2.5	4.6	11.6	0.9	0.9	10.2	11.5	1.5
2007/08	2.6	3.6	9.4	1.0	0.1	9.1	10.4	1.3
2008/09	2.7	4.6	12.4	0.6	1.9	9.6	10.9	1.5
2009/10	2.4	4.8	11.8	0.7	1.7	9.3	10.8	1.7
2010/11	2.5	4.9	12.2	0.9	2.2	9.3	10.9	1.7
2011/12	2.5	4.6	11.6	0.7	2.1	9.3	10.8	1.1
Wheat and Coarse Grains								
2000/01	4.0	3.2	12.7	2.2	0.3	8.4	14.5	2.3
2001/02	4.1	3.9	15.8	2.6	0.8	10.7	17.0	2.9
2002/03	4.1	4.1	16.6	2.0	1.2	10.7	17.0	3.3
2003/04	3.9	3.4	13.1	2.3	0.2	10.2	16.2	2.4
2004/05	4.0	4.5	18.2	2.1	0.9	11.8	18.1	3.7
2005/06	3.8	4.4	16.9	2.1	1.6	11.5	17.8	3.3
2006/07	3.7	4.3	15.9	2.4	1.5	10.9	16.8	3.3
2007/08	3.8	3.6	13.8	2.9	0.9	10.0	15.9	3.2
2008/09	3.8	4.5	17.1	2.3	2.4	10.5	16.5	3.7
2009/10	3.7	4.5	16.4	2.4	2.5	10.1	16.2	3.8
2010/11	3.6	4.5	16.0	2.5	3.0	10.0	16.2	3.2
2011/12	3.6	4.4	16.1	2.5	2.7	10.2	16.4	2.5

Former Soviet Union: Grain Supply and Demand

Wheat and Coarse Grains Millions of Metric Tons/Hectares

	Area Harvested	Yield	Production	Imports	Exports	Feed Dom. Consumpti	Domestic Consumpti	Ending Stocks
Wheat								
2005/06	49.4	1.8	91.0	5.6	21.1	23.7	75.3	17.1
2006/07	46.0	1.8	84.9	6.0	22.6	21.8	72.8	12.6
2007/08	47.5	1.9	92.5	6.0	21.9	23.9	75.4	13.9
2008/09	51.7	2.2	115.5	6.6	37.7	24.4	76.0	22.1
2009/10	54.9	2.1	113.9	5.4	36.7	26.0	78.2	26.6
2010/11	51.9	1.6	81.0	5.5	14.1	23.8	75.6	23.4
2011/12	50.6	2.2	112.4	6.2	35.7	26.2	78.6	27.6
Coarse Grains								
2005/06	28.5	2.0	55.6	1.1	8.6	34.5	50.5	5.2
2006/07	30.0	2.0	58.7	1.0	8.5	35.5	51.1	5.3
2007/08	29.6	1.8	54.2	1.0	5.3	35.0	50.6	4.7
2008/09	30.9	2.6	79.2	0.7	17.1	42.0	58.6	8.8
2009/10	29.8	2.3	68.2	0.4	15.0	39.2	55.2	7.3
2010/11	26.3	1.8	47.7	1.2	8.8	28.7	42.0	5.4
2011/12	28.4	2.7	75.7	0.6	19.1	38.6	54.2	8.4

Former Soviet Union: Grain Supply and Demand (Wheat)

Millions of Tons/Hectares

Country Mktg Year	Area Harvested	Yield	Production	MY Imports	MY Exports	Feed and Residual	Total Consumpti	Ending Stocks
Former Soviet Union - 12								
Kazakhstan								
2008/09	13.5	0.9	12.5	0.1	5.7	2.6	7.5	3.4
2009/10	14.8	1.2	17.1	0.1	7.9	2.9	7.8	4.8
2010/11	14.5	0.7	9.7	0.0	5.5	2.0	6.7	2.3
2011/12	13.8	1.5	21.0	0.0	8.5	3.5	8.4	6.4
Russia								
2008/09	26.6	2.4	63.8	0.2	18.4	16.2	38.9	10.7
2009/10	28.7	2.2	61.8	0.2	18.6	16.8	39.6	14.5
2010/11	26.6	1.6	41.5	0.1	4.0	16.0	38.6	13.5
2011/12	25.7	2.2	56.0	0.2	19.0	16.0	38.6	12.1
Ukraine								
2008/09	7.1	3.7	25.9	0.1	13.0	2.9	11.9	3.1
2009/10	6.8	3.1	20.9	0.0	9.3	3.3	12.3	2.4
2010/11	6.3	2.7	16.8	0.0	4.3	2.8	11.6	3.3
2011/12	6.7	3.3	22.0	0.1	8.0	3.7	12.5	4.9
Uzbekistan								
2008/09	1.4	4.4	6.0	1.4	0.2	1.3	7.1	0.9
2009/10	1.4	4.4	6.2	1.7	0.4	1.4	7.5	0.9
2010/11	1.4	4.6	6.5	1.6	0.1	1.5	7.9	1.0
2011/12	1.4	4.5	6.3	1.7	0.1	1.5	8.0	0.9
Other Former Soviet Union - 12								
2008/09	3.1	2.3	7.3	4.7	0.4	1.4	10.6	4.0
2009/10	3.3	2.4	8.0	3.5	0.5	1.6	11.0	4.0
2010/11	3.1	2.0	6.4	3.7	0.2	1.5	10.8	3.2
2011/12	3.0	2.4	7.1	4.2	0.1	1.5	11.1	3.3
Total Former Soviet Union - 12								
2008/09	51.7	2.2	115.5	6.6	37.7	24.4	76.0	22.1
2009/10	54.9	2.1	113.9	5.4	36.7	26.0	78.2	26.6
2010/11	51.9	1.6	81.0	5.5	14.1	23.8	75.6	23.4
2011/12	50.6	2.2	112.4	6.2	35.7	26.2	78.6	27.6

Former Soviet Union: Grain Supply and Demand (Barley)

Millions of Tons/Hectares

Country Mktg Year	Area Harvested	Yield	Production	MY Imports	MY Exports	Feed and Residual	Total Consumpti	Ending Stocks
Former Soviet Union - 12								
Kazakhstan								
2008/09	2.1	1.0	2.1	0.1	0.3	1.6	1.9	0.3
2009/10	1.8	1.4	2.5	0.0	0.4	1.7	2.0	0.5
2010/11	1.6	0.8	1.3	0.1	0.2	0.9	1.2	0.4
2011/12	1.6	1.6	2.5	0.0	0.3	1.7	2.0	0.6
Russia								
2008/09	9.7	2.4	23.1	0.1	3.4	12.3	17.1	3.8
2009/10	9.1	2.0	17.9	0.0	2.7	12.2	16.7	2.4
2010/11	7.2	1.2	8.4	0.4	0.3	5.5	9.5	1.4
2011/12	8.0	2.1	16.5	0.2	1.8	9.8	14.3	2.0
Ukraine								
2008/09	4.2	3.0	12.6	0.0	6.4	4.3	5.9	1.1
2009/10	5.0	2.4	11.8	0.0	6.2	3.9	5.6	1.1
2010/11	4.3	2.0	8.5	0.0	2.8	4.4	6.0	0.8
2011/12	3.7	2.4	9.0	0.0	4.1	3.4	5.0	0.7
Uzbekistan								
2008/09	0.1	3.2	0.2	0.0	0.0	0.2	0.3	0.0
2009/10	0.1	3.2	0.2	0.0	0.0	0.2	0.3	0.0
2010/11	0.1	3.2	0.2	0.0	0.0	0.2	0.3	0.0
2011/12	0.1	3.2	0.2	0.0	0.0	0.2	0.3	0.0
Other Former Soviet Union - 12								
2008/09	1.3	2.8	3.6	0.1	0.0	2.9	3.7	0.4
2009/10	1.2	2.5	3.0	0.1	0.0	2.3	3.1	0.4
2010/11	1.2	2.1	2.6	0.2	0.0	2.0	2.8	0.3
2011/12	1.3	2.4	3.1	0.1	0.0	2.3	3.1	0.4
Total Former Soviet Union - 12								
2008/09	17.3	2.4	41.6	0.3	10.1	21.3	28.8	5.5
2009/10	17.2	2.1	35.5	0.2	9.3	20.2	27.6	4.3
2010/11	14.4	1.5	21.0	0.7	3.3	13.0	19.8	2.8
2011/12	14.6	2.1	31.3	0.4	6.2	17.4	24.7	3.7

Former Soviet Union: Grain Supply and Demand (Corn)

Millions of Tons/Hectares

Country Mktg Year	Area Harvested	Yield	Production	MY Imports	MY Exports	Feed and Residual	Total Consumpti	Ending Stocks
Former Soviet Union - 12								
Kazakhstan								
2008/09	0.1	4.3	0.4	0.0	0.0	0.3	0.4	0.0
2009/10	0.1	4.7	0.5	0.0	0.0	0.3	0.4	0.0
2010/11	0.1	3.1	0.3	0.0	0.0	0.3	0.3	0.0
2011/12	0.1	4.6	0.4	0.0	0.0	0.3	0.4	0.0
Russia								
2008/09	1.8	3.7	6.7	0.1	1.3	4.5	5.2	0.3
2009/10	1.4	2.9	4.0	0.0	0.4	3.2	3.7	0.1
2010/11	1.4	2.2	3.1	0.2	0.1	2.8	3.2	0.1
2011/12	1.7	3.6	6.3	0.1	0.6	4.5	5.2	0.6
Ukraine								
2008/09	2.4	4.7	11.4	0.0	5.5	5.1	5.9	0.9
2009/10	2.1	5.0	10.5	0.0	5.1	5.0	5.7	0.7
2010/11	2.6	4.5	11.9	0.0	5.0	5.8	6.6	1.1
2011/12	3.5	6.0	21.0	0.0	12.0	7.0	7.8	2.3
Uzbekistan								
2008/09	0.0	4.6	0.2	0.0	0.0	0.2	0.2	0.0
2009/10	0.0	4.6	0.2	0.0	0.0	0.2	0.2	0.0
2010/11	0.0	4.6	0.2	0.0	0.0	0.2	0.2	0.0
2011/12	0.0	4.6	0.2	0.0	0.0	0.2	0.2	0.0
Other Former Soviet Union - 12								
2008/09	0.8	3.8	3.2	0.3	0.1	3.0	3.3	0.5
2009/10	0.8	3.6	3.0	0.2	0.1	2.8	3.1	0.5
2010/11	0.8	3.9	3.1	0.2	0.1	2.9	3.1	0.5
2011/12	0.8	4.6	3.9	0.1	0.3	3.2	3.5	0.8
Total Former Soviet Union - 12								
2008/09	5.2	4.2	21.9	0.4	6.9	13.0	14.9	1.8
2009/10	4.4	4.1	18.0	0.3	5.6	11.5	13.1	1.4
2010/11	5.0	3.7	18.6	0.3	5.2	11.9	13.4	1.7
2011/12	6.2	5.1	31.8	0.2	12.9	15.1	17.1	3.8

Wheat Supply and Disappearance: Selected Exporters
Million Metric Tons/Hectares

Country Mktg Year	Area Harvested	Yield	Production	MY Imports	MY Exports	Feed and Residual	Total Consumpti	Ending Stocks
Wheat Competitors								
Argentina								
2003/04	6.0	2.5	15.1	0.0	9.5	0.1	5.4	1.6
2004/05	6.4	2.6	16.9	0.0	11.9	0.1	5.4	1.3
2005/06	5.5	2.5	13.8	0.0	9.6	0.0	5.1	0.4
2006/07	6.2	2.6	16.3	0.0	10.7	0.1	5.4	0.6
2007/08	6.6	2.8	18.6	0.0	11.2	0.1	5.7	2.4
2008/09	5.3	2.1	11.0	0.0	6.8	0.0	5.3	1.3
2009/10	3.7	3.0	11.0	0.0	5.1	0.0	5.8	1.4
2010/11	4.4	3.5	15.5	0.0	9.3	0.0	5.9	1.7
2011/12	4.6	2.8	13.0	0.0	7.5	0.0	5.9	1.3
Australia								
2003/04	13.1	2.0	26.1	0.1	18.0	3.2	6.0	5.4
2004/05	13.4	1.6	21.9	0.1	14.7	3.2	6.0	6.7
2005/06	12.5	2.0	25.2	0.1	16.0	3.7	6.6	9.4
2006/07	11.8	0.9	10.8	0.1	8.7	4.5	7.4	4.2
2007/08	12.6	1.1	13.6	0.1	7.5	3.5	6.5	3.9
2008/09	13.5	1.6	21.4	0.1	14.7	4.2	7.3	3.4
2009/10	13.9	1.6	21.8	0.1	14.8	1.9	4.9	5.6
2010/11	13.4	1.9	26.0	0.1	18.3	3.0	6.1	7.3
2011/12	14.0	1.9	26.0	0.1	19.0	3.5	6.6	7.8
Canada								
2003/04	10.2	2.3	23.0	0.2	15.8	3.1	7.2	6.0
2004/05	9.4	2.6	24.8	0.3	14.9	3.8	8.2	7.9
2005/06	9.4	2.7	25.7	0.3	16.0	3.8	8.2	9.7
2006/07	9.7	2.6	25.3	0.3	19.4	4.5	9.0	6.9
2007/08	8.6	2.3	20.1	0.4	16.1	2.2	6.8	4.4
2008/09	10.0	2.9	28.6	0.4	18.9	3.2	8.0	6.5
2009/10	9.6	2.8	26.8	0.4	19.0	2.2	6.9	7.8
2010/11	8.3	2.8	23.2	0.4	16.5	2.9	7.7	7.2
2011/12	8.6	2.8	24.2	0.4	18.0	3.7	8.8	5.0
Total Wheat Competitors								
2003/04	29.2	2.2	64.3	0.3	43.3	6.4	18.5	13.0
2004/05	29.2	2.2	63.6	0.3	41.5	7.1	19.6	15.9
2005/06	27.3	2.4	64.7	0.4	41.7	7.5	19.9	19.4
2006/07	27.7	1.9	52.4	0.4	38.9	9.1	21.7	11.6

Wheat Supply and Disappearance: Selected Exporters (Continued)

Million Metric Tons/Hectares

Country Mktg Year	Area Harvested	Yield	Production	MY Imports	MY Exports	Feed and Residual	Total Consumpti	Ending Stocks
2007/08	27.8	1.9	52.2	0.5	34.8	5.8	18.9	10.6
2008/09	28.8	2.1	61.0	0.5	40.4	7.4	20.6	11.2
2009/10	27.2	2.2	59.7	0.5	39.0	4.1	17.7	14.8
2010/11	26.0	2.5	64.7	0.6	44.1	5.9	19.7	16.2
2011/12	27.2	2.3	63.2	0.5	44.5	7.2	21.3	14.1
India								
2003/04	24.9	2.6	65.8	0.0	5.7	0.6	68.9	6.9
2004/05	26.6	2.7	72.2	0.0	2.1	0.5	72.8	4.1
2005/06	26.5	2.6	68.6	0.0	0.8	0.3	70.0	2.0
2006/07	26.4	2.6	69.4	6.7	0.1	0.3	73.5	4.5
2007/08	28.0	2.7	75.8	2.0	0.0	0.2	76.4	5.8
2008/09	28.2	2.8	78.6	0.0	0.0	0.1	70.9	13.4
2009/10	27.8	2.9	80.7	0.2	0.1	0.1	78.2	16.1
2010/11	28.4	2.8	80.8	0.3	0.1	0.2	81.8	15.4
2011/12	29.4	2.9	85.9	0.0	1.0	0.2	84.7	15.6
Turkey								
2003/04	8.6	2.0	16.8	1.1	0.8	1.0	16.8	1.7
2004/05	8.6	2.2	18.5	0.4	2.0	1.0	16.8	1.8
2005/06	8.6	2.2	18.5	0.1	3.2	0.4	16.1	1.1
2006/07	8.6	2.0	17.5	1.7	2.4	0.8	16.7	1.3
2007/08	7.7	2.0	15.5	2.2	1.7	0.8	16.8	0.4
2008/09	7.7	2.2	16.8	3.5	2.2	0.7	16.9	1.5
2009/10	7.8	2.4	18.5	3.2	4.3	0.8	17.1	1.8
2010/11	8.0	2.1	17.0	3.7	3.0	0.7	17.2	2.3
2011/12	7.7	2.4	18.5	3.5	3.5	1.4	18.1	2.7

Corn Supply and Disappearance: Selected Exporters
Million Metric Tons/Hectares

Country Mktg Year	Area Harvested	Yield	Production	MY Imports	MY Exports	Feed and Residual	Total Consumpti	Ending Stocks
Argentina								
2003/04	2.3	6.4	15.0	0.0	10.9	2.8	4.4	0.4
2004/05	2.8	7.4	20.5	0.0	14.6	3.5	5.2	1.1
2005/06	2.4	6.5	15.8	0.0	9.5	4.4	6.2	1.3
2006/07	2.8	8.0	22.5	0.0	15.3	4.8	6.7	1.8
2007/08	3.4	6.5	22.0	0.0	14.8	4.9	6.8	2.2
2008/09	2.5	6.2	15.5	0.0	10.3	4.5	6.4	1.0
2009/10	2.8	8.5	23.3	0.0	16.5	5.0	6.9	0.9
2010/11	3.6	6.3	22.5	0.0	15.0	5.1	7.1	1.3
2011/12	3.8	7.6	29.0	0.0	20.0	5.6	7.8	2.5
China								
2003/04	24.1	4.8	115.8	0.0	7.6	97.0	128.4	44.9
2004/05	25.4	5.1	130.3	0.0	7.6	98.0	131.0	36.6
2005/06	26.4	5.3	139.4	0.1	3.7	101.0	137.0	35.3
2006/07	28.5	5.3	151.6	0.0	5.3	104.0	145.0	36.6
2007/08	29.5	5.2	152.3	0.0	0.5	106.0	150.0	38.4
2008/09	29.9	5.6	165.9	0.0	0.2	108.0	153.0	51.2
2009/10	31.2	5.3	164.0	1.3	0.2	118.0	165.0	51.3
2010/11	32.5	5.5	177.2	1.0	0.1	124.0	176.0	53.4
2011/12	33.2	5.6	184.5	3.0	0.2	132.0	189.0	51.7
South Africa								
2003/04	3.3	2.9	9.7	0.2	0.7	4.1	8.7	3.0
2004/05	3.2	3.6	11.7	0.4	2.1	5.0	9.7	3.2
2005/06	2.0	3.4	6.9	0.9	0.5	4.0	8.2	2.3
2006/07	2.9	2.5	7.3	1.1	0.5	4.4	8.6	1.7
2007/08	3.3	4.0	13.2	0.0	2.2	4.3	9.6	3.1
2008/09	2.9	4.3	12.6	0.0	1.7	4.3	9.9	4.1
2009/10	3.3	4.1	13.4	0.0	2.1	4.6	10.3	5.2
2010/11	2.9	4.1	11.8	0.0	3.0	4.7	10.4	3.6
2011/12	3.0	4.2	12.5	0.0	2.0	4.8	10.6	3.5
Brazil								
2003/04	12.4	3.4	42.0	0.4	4.4	30.5	36.3	7.9
2004/05	11.6	3.0	35.0	0.5	0.7	32.1	38.5	4.2
2005/06	12.9	3.2	41.7	1.1	4.5	33.0	39.5	3.0
2006/07	14.0	3.6	51.0	1.4	10.8	34.5	41.0	3.6
2007/08	14.7	4.0	58.6	0.7	7.8	36.0	42.5	12.6
2008/09	14.1	3.6	51.0	1.1	7.1	38.5	45.5	12.1

Corn Supply and Disappearance: Selected Exporters (Continued)

Million Metric Tons/Hectares

Country Mktg Year	Area Harvested	Yield	Production	MY Imports	MY Exports	Feed and Residual	Total Consumpti	Ending Stocks
2009/10	12.9	4.3	56.1	0.4	11.6	40.0	47.0	10.0
2010/11	13.8	4.2	57.5	0.5	9.0	42.5	49.5	9.5
2011/12	14.5	4.2	61.0	0.5	8.5	45.0	52.0	10.5
Total Corn Competitors								
2003/04	42.1	4.3	182.5	0.6	23.7	134.4	177.8	56.1
2004/05	43.0	4.6	197.5	0.9	25.0	138.6	184.4	45.1
2005/06	43.7	4.7	203.8	2.1	18.3	142.4	190.9	41.8
2006/07	48.2	4.8	232.4	2.6	31.9	147.7	201.3	43.6
2007/08	50.9	4.8	246.1	0.8	25.3	151.2	208.9	56.3
2008/09	49.4	5.0	245.0	1.2	19.3	155.3	214.8	68.4
2009/10	50.1	5.1	256.8	1.7	30.3	167.6	229.2	67.4
2010/11	52.8	5.1	269.0	1.5	27.1	176.3	243.0	67.8
2011/12	54.5	5.3	287.0	3.5	30.7	187.4	259.4	68.2

Barley Supply and Disappearance: Selected Exporters
Million Metric Tons/Hectares

Country Mktg Year	Area Harvested	Yield	Production	MY Imports	MY Exports	Feed and Residual	Total Consumpti	Ending Stocks
Australia								
2003/04	4.5	2.3	10.4	0.0	6.4	2.2	3.1	1.9
2004/05	4.6	1.7	7.7	0.0	4.3	2.5	3.5	1.9
2005/06	4.4	2.2	9.5	0.0	5.3	2.5	3.5	2.6
2006/07	4.2	1.0	4.3	0.0	1.9	2.9	4.0	1.0
2007/08	4.9	1.5	7.2	0.0	3.4	2.1	3.1	1.7
2008/09	5.0	1.6	8.0	0.0	3.2	2.9	4.0	2.4
2009/10	4.4	1.8	7.9	0.0	3.9	3.3	4.5	1.9
2010/11	4.1	2.3	9.3	0.0	4.2	3.4	4.7	2.3
2011/12	4.0	2.1	8.2	0.0	4.0	3.5	4.8	1.7
Canada								
2003/04	4.4	2.8	12.2	0.0	1.8	8.4	9.7	2.1
2004/05	3.8	3.3	12.6	0.1	1.2	8.8	10.1	3.4
2005/06	3.6	3.2	11.7	0.0	2.3	8.4	9.6	3.3
2006/07	3.2	3.0	9.6	0.0	1.2	8.8	10.2	1.5
2007/08	4.0	2.7	11.0	0.1	3.0	6.6	7.9	1.6
2008/09	3.5	3.4	11.8	0.0	1.5	7.7	9.1	2.8
2009/10	2.9	3.3	9.5	0.0	1.3	7.3	8.5	2.6
2010/11	2.4	3.2	7.6	0.0	1.2	6.4	7.6	1.4
2011/12	2.4	3.4	7.9	0.1	0.7	6.1	7.2	1.5
EU-27								
2003/04	14.1	4.0	55.8	0.7	2.6	41.8	58.0	4.5
2004/05	13.7	4.7	64.1	0.3	3.3	38.6	54.6	11.1
2005/06	13.8	4.0	54.8	0.1	3.3	38.2	54.1	8.5
2006/07	13.8	4.1	56.2	0.2	3.5	38.7	55.7	5.8
2007/08	13.8	4.2	57.5	0.3	3.8	38.7	54.2	5.7
2008/09	14.5	4.5	65.5	0.3	3.6	41.5	57.0	10.9
2009/10	13.9	4.5	62.1	0.1	1.1	41.5	56.5	15.5
2010/11	12.5	4.2	53.0	0.2	4.9	41.2	56.4	7.5
2011/12	12.1	4.3	52.4	0.1	2.5	37.0	52.0	5.4

Sorghum Supply and Disappearance: Selected Exporters
Million Metric Tons/Hectares

Country Mktg Year	Area Harvested	Yield	Production	MY Imports	MY Exports	Feed and Residual	Total Consumpti	Ending Stocks
Argentina								
2003/04	0.5	4.6	2.2	0.0	0.2	1.9	2.0	0.4
2004/05	0.6	5.2	2.9	0.0	0.4	2.4	2.6	0.4
2005/06	0.5	4.7	2.3	0.0	0.2	2.1	2.3	0.2
2006/07	0.6	4.7	2.8	0.0	1.1	1.5	1.7	0.2
2007/08	0.6	4.7	2.9	0.0	1.2	1.0	1.2	0.7
2008/09	0.5	3.7	1.7	0.0	1.1	1.0	1.1	0.2
2009/10	0.8	4.8	3.6	0.0	1.8	1.7	1.9	0.2
2010/11	1.0	4.4	4.4	0.0	1.9	1.9	2.1	0.6
2011/12	1.0	4.7	4.7	0.0	2.2	2.1	2.3	0.8
Australia								
2003/04	0.7	2.7	2.0	0.0	0.6	1.4	1.4	0.1
2004/05	0.8	2.7	2.0	0.0	0.2	1.8	1.8	0.1
2005/06	0.8	2.5	1.9	0.0	0.1	1.9	1.9	0.0
2006/07	0.6	2.1	1.3	0.0	0.1	1.2	1.2	0.0
2007/08	0.9	4.0	3.8	0.0	0.8	2.2	2.2	0.8
2008/09	0.8	3.5	2.7	0.0	1.0	1.8	1.8	0.7
2009/10	0.5	3.1	1.6	0.0	0.3	1.2	1.2	0.8
2010/11	0.6	3.3	2.1	0.0	1.0	1.4	1.4	0.5
2011/12	0.7	3.4	2.2	0.0	0.8	1.4	1.4	0.5

U.S. Grains Supply and Distribution: Wheat, Corn, Sorghum, Barley, Oats, Rye, and Rice

Thousand Metric Tons/Hectares

	Area Harvested	Yield	Rough Production	Production	Imports	TY Imports	Exports	TY Exports	Feed Dom. Consumption	Domestic Consumption	Ending Stocks
Wheat											
2009/10	20,191	3	nr	60,366	3,227	3,235	23,930	24,172	4,078	30,978	26,552
2010/11	19,271	3	nr	60,062	2,638	2,571	35,076	35,977	3,589	30,710	23,466
2011/12	18,496	3	nr	54,413	3,266	3,200	26,535	26,000	4,354	32,065	22,545
Corn											
2009/10	32,169	10	nr	332,549	212	237	50,295	49,721	130,173	281,590	43,380
2010/11	32,960	10	nr	316,165	703	700	46,599	45,250	121,722	284,990	28,659
2011/12	33,968	9	nr	312,687	381	400	40,642	41,000	116,845	279,667	21,418
Sorghum											
2009/10	2,234	4	nr	9,728	0	0	4,211	4,074	3,573	5,859	1,048
2010/11	1,946	5	nr	8,773	1	0	3,819	3,800	3,146	5,306	697
2011/12	1,794	3	nr	6,246	0	0	2,286	2,400	1,651	3,937	720
Barley											
2009/10	1,260	4	nr	4,949	361	302	123	152	1,040	4,604	2,515
2010/11	998	4	nr	3,925	207	150	165	220	1,084	4,537	1,945
2011/12	906	4	nr	3,392	218	200	218	200	653	4,137	1,200
Oats											
2009/10	558	2	nr	1,351	1,636	1,607	31	38	1,930	3,011	1,166
2010/11	511	2	nr	1,178	1,468	1,375	41	45	1,715	2,789	982
2011/12	380	2	nr	779	1,551	1,500	44	45	1,551	2,654	614
Rye											
2009/10	102	2	nr	178	108	129	2	4	37	273	24
2010/11	107	2	nr	189	141	140	4	5	93	330	20
2011/12	98	2	nr	161	140	125	5	5	57	293	23
Rice, Milled											
2009/10	1,256	8	9,972	7,133	604	562	3,514	3,868	nr	4,016	1,184
2010/11	1,463	8	11,027	7,593	582	635	3,487	3,250	nr	4,358	1,514
2011/12	1,062	8	8,530	6,035	603	670	2,920	3,050	nr	4,027	1,205

Notes: Wheat Trade Year (TY) statistics are on July/June years. Barley, corn, sorghum, rye and oats Trade Year (TY) statistics are on Oct/Sept years. Rice Trade Year (TY) statistics are for the subsequent calendar year; 'Imports' and 'Exports' columns contain data on the local marketing year: wheat, barley, oats and rye are June/May; corn and sorghum are Sept/Aug; rice is Aug/July.

Total Wheat and Coarse Grains: Supply and Demand

Millions of Metric Tons/Hectares

	Area Harvested	Yield	Production	TY Exports	Feed Dom. Consumpti	Domestic Consumpti	Ending Stocks
Wheat and Coarse Grains							
1982/83	576.9	2.2	1,248.0	189.6	593.4	1,197.1	332.1
1983/84	563.8	2.1	1,162.5	193.2	588.4	1,216.1	278.5
1984/85	567.0	2.3	1,315.0	203.6	609.9	1,253.5	340.0
1985/86	570.9	2.3	1,328.5	165.2	613.1	1,247.9	420.6
1986/87	565.6	2.4	1,348.0	174.7	644.2	1,299.4	469.2
1987/88	544.8	2.4	1,285.9	202.2	655.1	1,329.8	423.1
1988/89	542.4	2.2	1,218.1	203.3	618.2	1,302.0	339.3
1989/90	548.9	2.4	1,327.4	208.9	642.9	1,346.2	320.5
1990/91	549.0	2.6	1,417.6	190.1	667.3	1,369.5	368.7
1991/92	546.3	2.5	1,355.7	207.5	650.1	1,364.9	359.5
1992/93	548.8	2.6	1,431.6	205.2	661.4	1,389.1	399.2
1993/94	539.2	2.5	1,356.1	188.2	654.0	1,389.2	366.1
1994/95	537.6	2.6	1,392.5	200.1	666.9	1,396.0	362.6
1995/96	533.4	2.5	1,338.5	187.5	638.0	1,381.9	319.1
1996/97	552.8	2.7	1,490.5	198.4	670.9	1,442.9	366.7
1997/98	539.5	2.8	1,491.6	190.3	681.2	1,444.7	413.6
1998/99	533.9	2.8	1,481.9	198.7	680.7	1,448.1	447.5
1999/00	514.7	2.8	1,464.9	214.3	685.8	1,468.0	443.7
2000/01	514.3	2.8	1,446.8	205.1	693.9	1,470.1	420.4
2001/02	516.3	2.9	1,480.2	208.5	708.1	1,495.6	404.9
2002/03	506.6	2.8	1,443.2	209.6	705.9	1,506.0	342.1
2003/04	516.0	2.9	1,471.6	206.2	712.3	1,534.4	279.3
2004/05	517.7	3.2	1,642.4	215.2	751.6	1,585.9	335.7
2005/06	521.0	3.1	1,599.4	222.8	751.7	1,616.5	318.7
2006/07	518.5	3.1	1,584.8	230.4	741.6	1,629.6	273.8
2007/08	536.9	3.2	1,692.9	245.3	754.8	1,675.6	291.1
2008/09	538.7	3.3	1,794.1	253.6	765.8	1,724.3	361.0
2009/10	537.9	3.3	1,800.6	253.4	770.5	1,765.2	396.4
2010/11	532.9	3.3	1,749.1	247.8	759.6	1,781.2	364.2
2011/12	536.5	3.4	1,819.1	255.1	787.3	1,825.6	357.7

Notes: Wheat and coarse grains trade data are on July/June years through 1975/76. From 1976/77 to the present, coarse grains data are on an Oct/Sept trade year.

World Wheat and Coarse Grains: Supply and Demand

Millions of Metric Tons/Hectares

	Area Harvested	Yield	Production	TY Exports	Feed Dom. Consumpti	Domestic Consumpti	Ending Stocks
Wheat							
1989/90	226.3	2.4	533.1	103.9	103.7	531.3	137.1
1990/91	231.7	2.5	588.8	101.3	130.1	554.3	171.6
1991/92	223.4	2.4	543.5	111.4	113.8	551.8	163.2
1992/93	222.8	2.5	562.6	113.2	110.1	547.7	177.9
1993/94	221.8	2.5	558.5	101.7	108.0	553.0	183.4
1994/95	214.5	2.4	523.0	101.5	99.6	542.1	164.2
1995/96	219.1	2.5	537.5	99.2	93.3	546.1	155.7
1996/97	230.3	2.5	581.5	104.0	97.9	573.4	163.8
1997/98	228.5	2.7	610.2	104.5	102.0	576.7	197.2
1998/99	225.4	2.6	590.4	102.0	105.0	578.3	209.4
1999/00	215.7	2.7	586.8	111.9	100.6	585.5	210.7
2000/01	218.0	2.7	583.1	102.4	105.2	585.4	208.4
2001/02	215.4	2.7	583.6	108.0	106.9	586.6	205.3
2002/03	215.0	2.6	569.6	106.8	111.1	604.9	170.0
2003/04	210.0	2.6	555.4	103.6	97.2	589.6	135.9
2004/05	217.2	2.9	626.7	113.9	106.6	607.1	155.5
2005/06	219.7	2.8	619.1	114.1	113.0	622.2	152.5
2006/07	213.0	2.8	596.3	115.6	108.1	616.1	132.6
2007/08	218.2	2.8	612.1	116.4	99.3	617.7	127.0
2008/09	225.3	3.0	682.8	143.0	118.1	642.7	167.1
2009/10	227.2	3.0	684.3	134.4	115.7	650.5	200.9
2010/11	222.6	2.9	648.7	132.3	112.5	653.5	196.1
2011/12	222.3	3.1	683.3	136.6	126.4	676.8	202.6
Coarse Grains							
1989/90	322.5	2.5	794.3	105.0	539.2	814.9	183.4
1990/91	317.2	2.6	828.8	88.9	537.3	815.2	197.1
1991/92	322.9	2.5	812.2	96.2	536.2	813.1	196.3
1992/93	326.0	2.7	868.9	91.9	551.3	841.4	221.3
1993/94	317.4	2.5	797.6	86.5	546.1	836.2	182.7
1994/95	323.1	2.7	869.4	98.6	567.4	853.8	198.3
1995/96	314.4	2.5	800.9	88.3	544.7	835.8	163.4
1996/97	322.5	2.8	909.1	94.4	573.0	869.5	203.0
1997/98	311.0	2.8	881.4	85.8	579.2	867.9	216.4
1998/99	308.6	2.9	891.5	96.7	575.7	869.7	238.1
1999/00	299.0	2.9	878.1	102.4	585.2	882.6	233.1
2000/01	296.2	2.9	863.7	102.7	588.8	884.8	212.0
2001/02	300.9	3.0	896.6	100.5	601.3	909.0	199.6
2002/03	291.6	3.0	873.6	102.8	594.8	901.1	172.0
2003/04	306.0	3.0	916.1	102.6	615.1	944.8	143.3
2004/05	300.5	3.4	1,015.6	101.3	645.0	978.8	180.2
2005/06	301.3	3.3	980.3	108.6	638.7	994.3	166.2
2006/07	305.4	3.2	988.6	114.7	633.5	1,013.5	141.2
2007/08	318.7	3.4	1,080.8	128.9	655.6	1,057.9	164.1
2008/09	313.5	3.5	1,111.3	110.7	647.7	1,081.6	193.9
2009/10	310.7	3.6	1,116.3	119.0	654.8	1,114.7	195.5
2010/11	310.3	3.5	1,100.4	115.5	647.1	1,127.7	168.1
2011/12	314.2	3.6	1,135.8	118.5	660.8	1,148.8	155.1

Notes: Wheat and coarse grains trade data are on July/June years through 1975/76. From 1976/77 to the present, coarse grains data are on an Oct/Sept trade year.

World Corn and Barley: Supply and Demand

Millions of Metric Tons/Hectares

	Area Harvested	Yield	Production	TY Exports	Feed Dom. Consumpti	Domestic Consumpti	Ending Stocks
Corn							
1989/90	127.3	3.6	461.7	74.5	324.8	474.1	132.9
1990/91	129.2	3.7	482.0	58.8	318.5	473.4	141.4
1991/92	132.6	3.7	493.0	63.0	334.4	493.3	141.0
1992/93	133.2	4.0	535.6	62.6	348.7	512.1	162.7
1993/94	130.7	3.6	475.8	57.4	342.0	509.0	129.4
1994/95	135.2	4.1	559.3	71.9	371.5	535.6	153.2
1995/96	135.0	3.8	516.4	64.8	365.1	536.6	133.0
1996/97	141.7	4.2	593.0	66.7	387.7	560.1	165.8
1997/98	136.3	4.2	574.4	63.1	400.4	573.8	166.4
1998/99	139.2	4.4	606.0	68.7	404.3	581.5	191.0
1999/00	139.1	4.4	608.1	72.3	422.4	605.3	193.8
2000/01	137.3	4.3	591.4	75.9	427.2	610.1	175.1
2001/02	137.7	4.4	601.0	72.8	436.1	624.8	151.4
2002/03	137.4	4.4	603.2	77.0	432.9	627.5	127.0
2003/04	142.0	4.4	627.5	79.1	445.5	649.2	105.4
2004/05	145.5	4.9	715.8	76.0	475.4	689.3	131.9
2005/06	145.7	4.8	699.7	82.7	477.6	706.7	124.9
2006/07	149.9	4.8	714.0	91.5	477.8	728.7	110.2
2007/08	161.2	4.9	794.9	98.3	497.7	773.5	131.5
2008/09	158.8	5.0	799.3	84.0	480.8	783.7	147.2
2009/10	157.8	5.2	819.6	93.0	488.7	822.8	144.0
2010/11	163.2	5.1	828.7	91.2	494.0	843.7	129.0
2011/12	168.0	5.1	859.0	94.4	508.5	866.5	121.6
Barley							
1989/90	73.7	2.3	166.2	18.5	126.0	170.4	27.5
1990/91	73.0	2.5	179.5	19.6	130.8	175.5	31.5
1991/92	76.6	2.2	169.9	19.4	120.3	166.5	34.9
1992/93	73.1	2.3	166.3	16.4	119.0	165.6	35.0
1993/94	73.8	2.3	169.0	18.8	123.8	169.1	34.9
1994/95	72.8	2.2	160.7	15.3	120.9	165.6	30.0
1995/96	68.6	2.1	141.2	13.4	107.8	150.7	20.5
1996/97	65.5	2.3	153.1	17.9	106.3	149.5	24.1
1997/98	64.5	2.4	153.9	12.8	104.1	145.8	32.2
1998/99	60.8	2.2	136.0	17.8	99.5	139.3	29.0
1999/00	54.5	2.3	127.4	17.8	94.0	132.5	23.9
2000/01	53.9	2.5	133.1	16.2	94.6	134.4	22.6
2001/02	56.3	2.5	143.5	17.2	95.5	136.8	29.3
2002/03	55.8	2.4	134.3	16.3	95.0	136.1	27.5
2003/04	59.4	2.4	142.2	14.8	102.8	146.3	23.4
2004/05	58.2	2.6	152.3	17.0	100.2	142.7	33.0
2005/06	56.2	2.4	136.2	17.5	97.5	141.1	28.1
2006/07	57.0	2.4	136.6	14.6	98.0	143.4	21.3
2007/08	57.5	2.3	133.0	18.6	91.1	134.0	20.4
2008/09	55.8	2.8	155.2	18.2	100.3	144.4	31.2
2009/10	55.7	2.7	150.4	17.3	100.3	144.3	37.3
2010/11	50.8	2.4	124.1	15.2	91.4	135.2	26.2
2011/12	50.3	2.6	133.2	15.9	92.2	136.5	22.9

Notes: Coarse grains trade data are on July June years through 1975/76. From 1976/77 to the present, coarse grains data are on an Oct/Sept trade year.

World Rice: Supply and Demand

Millions of Metric Tons/Hectares

	Area Harvested	Yield	Rough Production	Production	TY Exports	Domestic Consumpti	Ending Stocks
Rice, Milled							
1982/83	140.5	3.0	418.2	285.0	11.2	278.7	56.8
1983/84	144.6	3.1	450.9	306.9	11.9	294.4	69.3
1984/85	144.1	3.2	464.9	316.8	11.0	298.4	87.7
1985/86	144.7	3.2	467.3	318.0	11.8	308.0	97.7
1986/87	144.8	3.2	464.6	316.1	12.9	310.4	103.3
1987/88	141.4	3.3	464.8	315.1	11.4	313.1	105.3
1988/89	146.6	3.3	490.8	332.1	14.0	325.7	111.7
1989/90	147.8	3.5	510.3	345.2	11.7	336.3	120.6
1990/91	147.0	3.5	519.4	351.4	12.3	345.3	126.7
1991/92	147.5	3.5	522.8	353.2	14.4	353.2	126.7
1992/93	146.5	3.6	524.2	354.0	14.9	357.5	123.2
1993/94	145.3	3.6	526.1	354.7	16.6	358.9	119.0
1994/95	147.4	3.7	539.9	364.1	20.8	365.5	117.6
1995/96	148.4	3.7	547.3	368.8	19.7	368.3	118.1
1996/97	150.1	3.8	565.3	381.4	18.9	379.2	120.3
1997/98	151.7	3.8	575.2	387.4	27.6	379.9	127.7
1998/99	153.1	3.8	587.0	394.9	24.8	388.6	134.0
1999/00	155.9	3.9	608.8	409.3	22.8	400.2	143.1
2000/01	152.4	3.9	594.3	399.4	24.4	395.8	146.7
2001/02	151.4	3.9	594.7	399.7	27.8	413.5	132.9
2002/03	146.9	3.8	563.5	378.5	27.5	408.4	102.9
2003/04	149.3	3.9	585.4	392.5	27.3	413.9	81.5
2004/05	151.8	3.9	597.0	401.2	29.0	408.7	74.0
2005/06	153.8	4.0	622.9	418.2	29.1	415.6	76.6
2006/07	154.5	4.1	626.2	420.0	31.9	421.5	75.1
2007/08	155.2	4.2	644.8	432.3	29.8	427.4	80.0
2008/09	157.8	4.2	669.1	447.5	29.3	435.9	91.5
2009/10	156.0	4.2	659.4	440.5	31.6	437.9	94.2
2010/11	157.3	4.3	676.7	451.2	34.4	447.5	97.9
2011/12	160.6	4.3	690.4	461.0	32.9	458.3	100.6

Notes: Stocks, exports and consumption are expressed on a milled basis in marketing years.

ENDNOTES TO GRAIN: WORLD MARKETS AND TRADE

REGIONAL TABLES

North America: Canada, Mexico, the United States.

Central America: Belize, Costa Rica, El Salvador, Guatemala, Honduras, Nicaragua, Panama.

Caribbean: Anguilla, Antigua and Barbuda, Aruba, Bahamas, Barbados, Bermuda, British Virgin Islands, Cayman Islands, Cuba, Dominica, Dominican Republic, French West Indies, Grenada, Guadeloupe, Haiti, Jamaica and Dep, Leeward-Windward Islands, Martinique, Montserrat, Netherlands Antilles, Puerto Rico, Kitts and Nevis, St. Lucia, St. Vincent and the Grenadines, Trinidad and Tobago, Turks and Caicos Islands, Virgin Islands of the U.S.

South America: Argentina, Bolivia, Brazil, Chile, Colombia, Ecuador, Falkland Islands (Islas Malvinas), French Guiana, Guyana, Paraguay, Peru, Suriname, Uruguay, Venezuela.

EU: Austria, Belgium/Luxembourg, Bulgaria, Cyprus, Czech Republic, Denmark, Estonia, Finland, France, Germany, Greece, Hungary, Ireland, Italy, Latvia, Lithuania, Malta, Netherlands, Poland, Portugal, Romania, Slovakia, Slovenia, Spain, Sweden, United Kingdom.

Other Europe: Albania, Azores, Bosnia and Herzegovina, Croatia, Former Yugoslavia, Gibraltar, Iceland, Macedonia, Montenegro, Norway, Serbia, Switzerland.

Former Soviet Union: Armenia, Azerbaijan, Belarus, Georgia, Kazakhstan, Kyrgyzstan, Moldova, Russia, Tajikistan, Turkmenistan, Ukraine, Uzbekistan.

Middle East: Bahrain, Iran, Iraq, Israel, Jordan, Kuwait, Lebanon, Oman, Qatar, Saudi Arabia, Syria, Turkey, United Arab Emirates, Yemen.

North Africa: Algeria, Egypt, Libya, Morocco, Tunisia.

Sub-Saharan Africa: all African countries except North Africa.

East Asia: China, Hong Kong, Japan, South Korea, North Korea, Macau, Mongolia, Taiwan.

South Asia: Afghanistan, Bangladesh, Bhutan, India, Nepal, Pakistan, Sri Lanka, Maldives.

Southeast Asia: Brunei, Burma, Cambodia, Indonesia, Laos, Malaysia, Philippines, Singapore, Thailand, Vietnam.

Oceania: Australia, Fiji, New Zealand, Papua New Guinea.

OTHER NOTES

Local Marketing Years (LMY): LMY refers to the 12-month period following the main harvest, when the crop is marketed (i.e., consumed, traded, or stored). The year first listed begins a country's LMY for that commodity (2008/09 starts in 2008); except for summer grains in certain Southern Hemisphere countries and for rice in selected countries, where the second year begins the LMY (2008/09 starts in 2009). Key exporter LMY's are:

Wheat	Corn	Barley	Sorghum
Argentina (Dec/Nov)	Argentina (Mar/Feb)	Australia (Nov/Oct)	Argentina (Mar/Feb)
Australia (Oct/Sep)	Brazil (Mar/Feb)	Canada (Aug/Jul)	Australia (Mar/Feb)
Canada (Aug/Jul)	China (Oct/Sep)	EU-27 (Jul/Jun)	United States (Sep/Aug)
China (Jul/Jun)	South Africa (May/Apr)	Russia (Jul/Jun)	
EU-27 (Jul/Jun)	United States (Sep/Aug)	Ukraine (Jul/Jun)	
India (Apr/Mar)		United States (Jun/May)	
Kazakhstan (Jul/Jun)			
Russia (Jul/Jun)			
Turkey (Jun/May)			
Ukraine (Jul/Jun)			
United States (Jun/May)			

For a complete list of local marketing years, please see the FAS website (<http://www.fas.usda.gov/psdonline/psdAvailability.aspx>).

Stocks: Unless otherwise stated, stock data are based on an aggregate of differing local marketing years and should not be construed as representing world stock levels at a fixed point in time.

Consumption: World totals for consumption reflect total utilization, including food, seed, industrial, feed, and waste; as well as differences in local marketing year imports and local marketing year exports. Consumption statistics for regions and individual countries, however, reflect food, seed, industrial, feed, and waste only.

Trade: All PSD tables are balanced on the different local marketing years. All trade tables contain Trade Year (TY) data which puts all countries on a uniform, 12-month period for analytical comparisons: wheat is July/June; coarse grains, corn, barley, sorghum, oats, and rye are Oct/Sept; and rice is calendar year.

EU Consolidation: The trade figures starting from 1999/00 represent EU-27 and exclude all intra-trade. For the years 1960/61 through 1998/99, figures are the EU-15 and also exclude all intra-trade. EU-15 member states' data for grains are no longer maintained in the official USDA database. Data for the individual NMS-10, plus Bulgaria and Romania, exists only prior to 1999/00.

Statistics: (1) Wheat trade statistics include wheat, flour, and selected pasta products on a grain equivalent basis. (2) Rice trade statistics include rough, brown, milled, and broken on a milled

equivalent basis. (3) Coarse grains statistics include corn, barley, sorghum, oats, rye, millet, and mixed grains but exclude trade in barley malt, millet, and mixed grains.

Unaccounted: This term includes grain in transit, reporting discrepancies in some countries, and trade to countries outside the USDA database.

The Field Crops and Livestock Branch, Industry and Sector Analysis Division, Foreign Agricultural Service, USDA, Washington DC 20250, prepared this circular. Information is gathered from official statistics of foreign governments and other foreign source materials, reports of U.S. agricultural attachés and Foreign Service officers, office research, and related information. Further information may be obtained by writing the Division or telephoning (202) 720-6590.

Note: The previous report in this series was the Grain: World Markets and Trade Foreign Agricultural Service Circular FG 10-11 October 2011. For further details on world grain production, please see World Agricultural Production Foreign Agricultural Service Circular WAP 11-11 November 2011.

This circular is available in its entirety on the World Wide Web via the Foreign Agricultural Service Home Page. The address is: <http://www.fas.usda.gov>