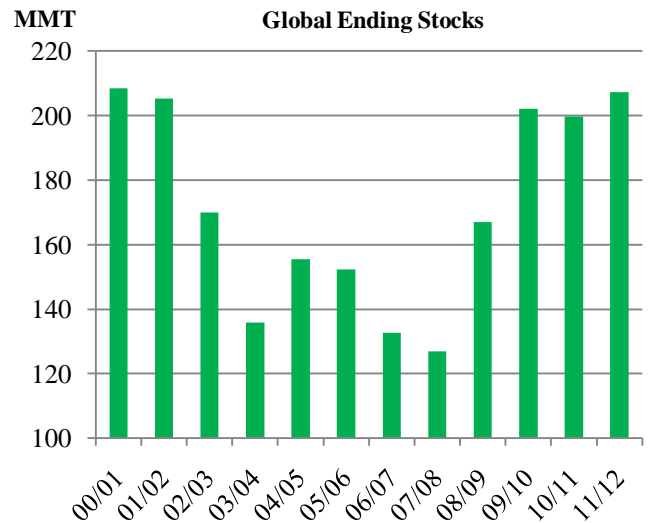
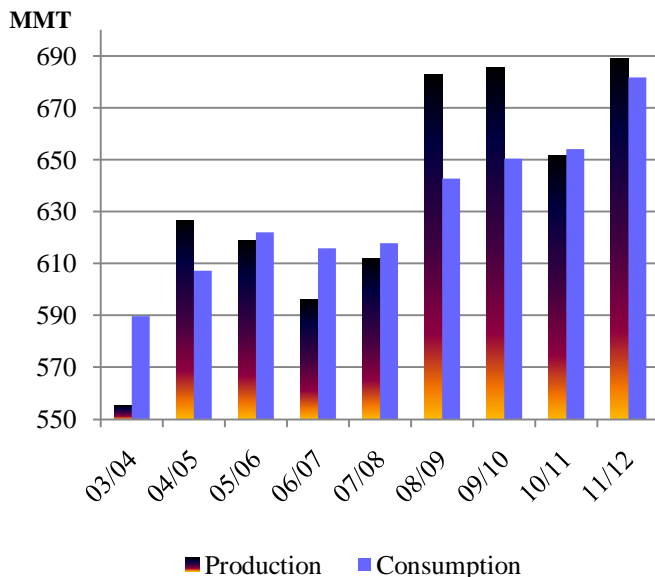




# Grain: World Markets and Trade

## Global Wheat Production/Consumption Surge: Stocks Expand



Global wheat production and consumption in 2011/12 are both projected at a record and stocks are forecast at the highest level in 12 years. In just 1 year, the market supply situation has completely reversed from one of extreme tightness to a surplus, particularly in exporting countries. Black Sea countries' supplies have recovered from last year's drought and Australia is expecting back-to-back bumper crops. The leap in global consumption is largely a function of abundant global wheat supplies, tight U.S. corn supplies, and the concurrent price inversion between the two grains.

Global wheat trade is forecast nearly 6 million tons higher than last year, driven in large part by greater demand for wheat feeding. While U.S. corn export prices remain elevated, wheat import demand is rising in many markets due to abundant global supplies and lower relative prices. South Korea, Thailand, and Vietnam recently purchased feed wheat, and Japan, which usually imports 300,000 tons of feed wheat per year, is expected to increase purchases. In addition, northwest Mexico is suffering from a drought, and imported U.S. wheat is more economical than either sorghum or corn.

---

## **TABLE OF CONTENTS**

<b>World Markets and Trade: Commentary and Current Data</b>	
Wheat .....	4
Rice .....	9
Coarse Grains .....	13
<b>Historical Data Series for Selected Regions and Countries .....</b>	<b>33</b>
<b>Endnotes to Grain: World Markets and Trade .....</b>	<b>52</b>

The Foreign Agricultural Service (FAS) updates its production, supply and distribution database for cotton, oilseeds, and grains at 9 a.m. on the day the World Agricultural Supply and Demand Estimates (WASDE) report is released. It is available on the FAS website (<http://www.fas.usda.gov/psdonline/>). This circular is released at 10:00 a.m. on the same day, together with its downloadable data set.

## All Grain Summary Comparison

	Marketing Year	Wheat			Rice, Milled			Corn		
		2009/10	2010/11	2011/12	2009/10	2010/11	2011/12	2009/10	2010/11	2011/12
<b>Production</b>										
United States	(Jun-May)	60.4	60.1	54.4	7.1	7.6	6.0	332.5	316.2	312.7
Other		625.1	591.5	634.6	433.4	442.2	454.8	486.7	511.4	554.8
<b>World Total</b>		685.4	651.6	689.0	440.5	449.8	460.8	819.2	827.6	867.5
<b>Domestic Consumption</b>										
United States	(Jun-May)	31.0	30.7	32.1	4.0	4.4	4.0	281.6	285.0	279.5
Other		617.1	621.3	644.7	430.8	441.0	451.9	533.8	558.0	585.9
<b>World Total</b>		648.1	652.0	676.7	434.8	445.4	455.9	815.4	843.0	865.5
<b>Ending Stocks</b>										
United States	(Jun-May)	26.6	23.5	23.9	1.2	1.5	1.2	43.4	28.7	21.5
Other		175.6	176.3	184.6	93.0	95.2	98.3	100.7	99.6	105.6
<b>World Total</b>		202.1	199.7	208.5	94.2	96.7	99.5	144.1	128.3	127.2
<b>TY Imports</b>										
United States	(Jun-May)	3.2	2.6	3.2	0.6	0.6	0.7	0.2	0.7	0.4
Other		128.6	126.5	131.9	28.3	31.7	29.5	90.1	89.4	91.2
<b>World Total</b>		131.8	129.0	135.1	28.9	32.3	30.2	90.3	90.1	91.6
<b>TY Exports</b>										
United States	(Jun-May)	24.2	36.0	24.5	3.9	3.3	3.1	49.7	45.3	41.0
Other		110.2	96.3	113.6	27.7	31.5	29.8	43.2	46.1	53.0
<b>World Total</b>		134.4	132.3	138.1	31.6	34.8	32.9	93.0	91.3	94.0

Note: Consumption in this table has not been adjusted for differences in marketing year imports and exports and therefore differs from global totals shown elsewhere.

Marketing years for U.S. grains are: Wheat (Jun-May), Rice (Aug-Jul), Corn (Sep-Aug).  
'Marketing Year' column is germane for U.S. wheat only.

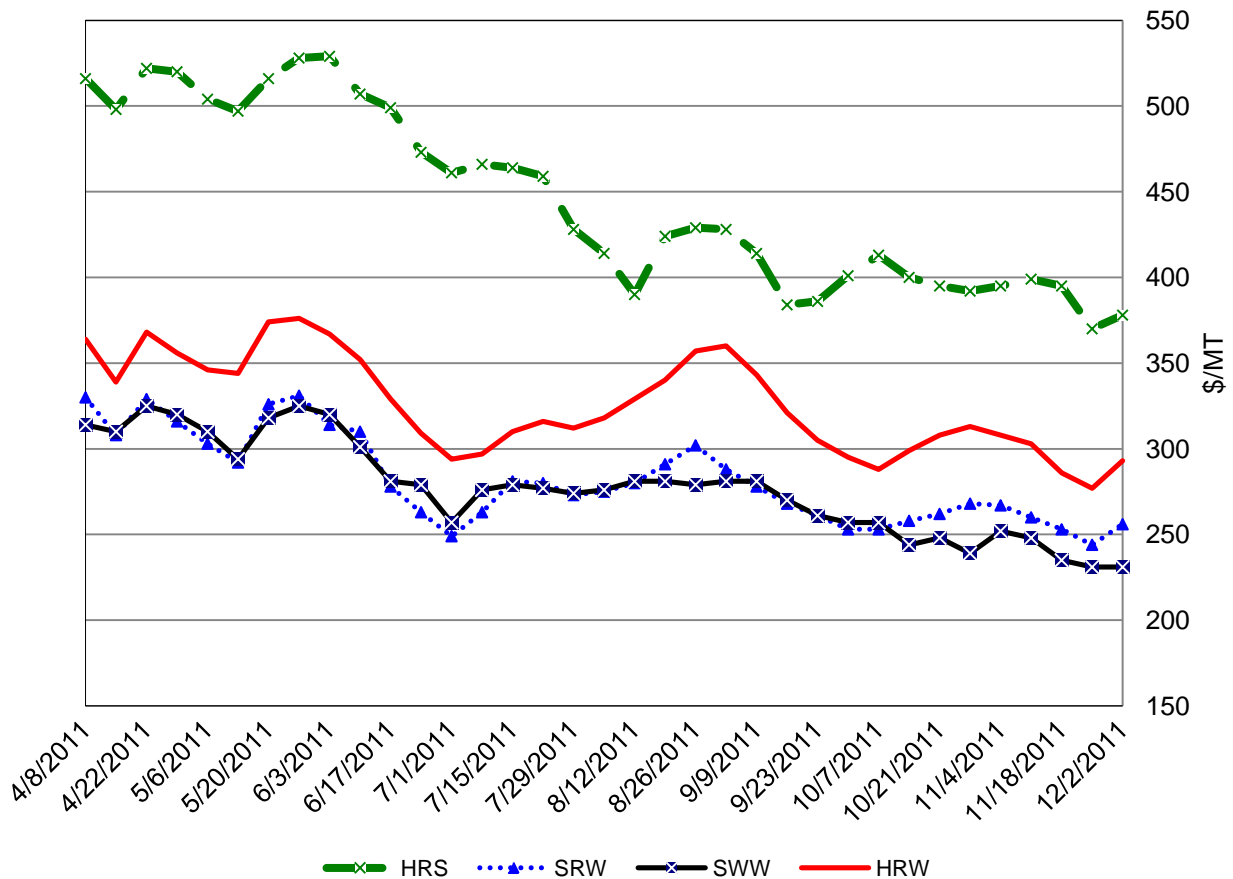
# WHEAT: WORLD MARKETS AND TRADE

## OVERVIEW

Global production and consumption are forecast at a record, and stocks are at the highest level in 12 years. Global trade is raised because of strong demand in Asian markets and Mexico for competitively priced feed-quality wheat. U.S. exports are becoming increasingly less competitive with other major exporters and are cut this month. The forecast U.S. season-average price is lowered but remains a record.

## PRICES:

U.S. Weekly FOB Export Bids



**Domestic:** Overall, wheat prices ended the month lower, pressured by abundant global supplies, strong competition, and negative macroeconomic factors. Hard Red Winter (HRW) prices are down \$15 to \$293 per ton and Hard Red Spring (HRS) fell \$17 to \$378 per ton. Soft Red Winter (SRW) ended \$11 lower at \$256 per ton. Soft White Wheat (SWW) dropped \$21 to \$231 per ton, remaining below SRW prices.

---

## TRADE CHANGES IN 2011/12

### **Selected Exporters**

- **Argentina** is up 1.2 million tons to 9.2 million because of greater exportable supplies and competitive prices, as evidenced by recent sales to North Africa.
- **Australia** is raised sharply by 2.5 million tons to a record 21.5 million on account of large exportable supplies including a surplus of highly-demanded and competitively priced feed-quality wheat.
- **Ukraine** is reduced 1.0 million tons to 7.0 million due to the slow pace of exports and increased competition from Australian feed-quality wheat in Asian markets.
- **United States** is cut 1.5 million tons to 24.5 million as a result of intensified competition from Australia and Argentina.

### **Selected Importers**

- **Japan** is boosted 300,000 tons to 6.1 million on expectations of increased purchases of feed-quality wheat.
- **South Korea** is raised 500,000 tons to 4.7 million based on recent purchases of feed-quality wheat.
- **Mexico** is raised 500,000 tons to 4.0 million on purchases of U.S. wheat to be used as feed.
- **Syria** is lowered 300,000 to 1.0 million as a result of the slow pace of imports and cancelled tenders.

**World Wheat, Flour, and Products Trade**  
**July/June Year, Thousand Metric Tons**

	2007/08	2008/09	2009/10	2010/11	2011/12 Nov	2011/12 Dec
<b>TY Exports</b>						
Argentina	10,228	8,621	5,172	7,738	8,000	9,200
Australia	7,449	13,450	13,764	18,477	19,000	21,500
Canada	16,561	18,674	18,992	16,768	18,000	18,000
China	2,835	723	892	941	1,000	1,000
EU-27	12,272	25,351	22,115	22,850	17,000	17,000
Kazakhstan	8,181	5,701	7,871	5,519	8,500	8,500
Russia	12,220	18,393	18,556	3,983	19,000	19,000
Turkey	1,763	2,342	4,371	2,946	3,500	3,700
Ukraine	1,236	13,037	9,337	4,302	8,000	7,000
Uruguay	422	616	994	1,197	1,100	1,100
Others	8,984	8,963	8,157	11,626	7,514	7,564
<b>Subtotal</b>	<b>82,151</b>	<b>115,871</b>	<b>110,221</b>	<b>96,347</b>	<b>110,614</b>	<b>113,564</b>
<b>United States</b>	<b>34,282</b>	<b>27,101</b>	<b>24,172</b>	<b>35,977</b>	<b>26,000</b>	<b>24,500</b>
<b>World Total</b>	<b>116,433</b>	<b>142,972</b>	<b>134,393</b>	<b>132,324</b>	<b>136,614</b>	<b>138,064</b>
<b>TY Imports</b>						
Afghanistan	2,300	3,800	2,500	2,300	3,000	3,000
Algeria	5,904	6,356	5,167	6,436	6,100	6,100
Bangladesh	1,500	2,882	3,331	3,900	2,800	2,800
Brazil	7,076	6,762	6,667	6,710	7,000	7,000
Egypt	7,700	9,900	10,300	10,600	10,500	10,500
EU-27	6,933	7,737	5,519	4,712	7,500	7,500
Indonesia	5,227	5,419	5,364	6,611	6,700	6,700
Iraq	3,429	3,879	3,905	3,632	3,700	3,700
Israel	1,189	2,063	1,862	1,392	1,700	1,700
Japan	5,701	5,156	5,502	5,869	5,800	6,100
Korea, South	3,092	3,371	4,470	4,761	4,200	4,700
Libya	1,574	1,689	2,091	1,419	1,600	1,600
Mexico	3,136	3,342	3,196	3,462	3,500	4,000
Morocco	4,192	3,759	2,304	3,903	3,000	3,000
Nigeria	2,633	3,550	4,079	4,051	4,100	4,100
Peru	1,444	1,385	1,703	1,757	1,700	1,700
Philippines	2,266	3,201	3,188	3,235	3,000	3,200
Saudi Arabia	75	1,275	1,910	1,741	2,000	2,000
Sudan	1,060	1,712	1,901	1,642	1,800	1,800
Thailand	1,072	1,128	1,600	1,920	1,600	1,700
Tunisia	2,372	1,768	1,534	1,773	1,800	1,800
Turkey	2,192	3,578	3,218	3,517	3,500	3,500
Uzbekistan	990	1,440	1,677	1,618	1,700	1,700
Vietnam	1,066	1,016	1,927	2,460	2,200	2,300
Yemen	1,900	2,796	2,602	2,705	2,700	2,700
Others	34,453	47,823	41,046	34,325	37,320	37,045
<b>Subtotal</b>	<b>110,476</b>	<b>136,787</b>	<b>128,563</b>	<b>126,451</b>	<b>130,520</b>	<b>131,945</b>
<b>Unaccounted</b>	<b>3,005</b>	<b>2,786</b>	<b>2,595</b>	<b>3,302</b>	<b>2,894</b>	<b>2,919</b>
<b>United States</b>	<b>2,952</b>	<b>3,399</b>	<b>3,235</b>	<b>2,571</b>	<b>3,200</b>	<b>3,200</b>
<b>World Total</b>	<b>116,433</b>	<b>142,972</b>	<b>134,393</b>	<b>132,324</b>	<b>136,614</b>	<b>138,064</b>

TY=Trade Year, see Endnotes.

**World Wheat Production, Consumption, and Stocks**  
**Local Marketing Years, Thousand Metric Tons**

	2007/08	2008/09	2009/10	2010/11	2011/12 Nov	2011/12 Dec
<b>Production</b>						
Argentina	18,600	11,000	12,000	16,100	13,000	14,500
Australia	13,569	21,420	21,834	27,891	26,000	28,300
Canada	20,054	28,611	26,848	23,167	24,200	25,260
China	109,298	112,464	115,120	115,180	117,000	117,920
Egypt	8,275	7,977	8,523	7,200	8,700	8,700
EU-27	120,133	151,122	138,816	135,674	137,486	137,486
India	75,810	78,570	80,680	80,800	85,930	85,930
Iran	15,887	7,957	13,485	15,500	13,750	13,750
Kazakhstan	16,467	12,538	17,052	9,700	21,000	21,000
Morocco	1,583	3,730	6,400	4,887	6,100	5,800
Pakistan	23,295	20,959	24,000	23,900	24,000	24,000
Russia	49,368	63,765	61,770	41,508	56,000	56,000
Turkey	15,500	16,800	18,450	17,000	18,500	18,800
Ukraine	13,938	25,885	20,866	16,844	22,000	22,000
Uzbekistan	6,200	6,000	6,200	6,500	6,300	6,300
Others	48,194	45,971	53,025	49,665	48,920	48,813
<b>Subtotal</b>	556,171	614,769	625,069	591,516	628,886	634,559
<b>United States</b>	55,821	68,016	60,366	60,062	54,413	54,413
<b>World Total</b>	611,992	682,785	685,435	651,578	683,299	688,972
<b>Total Consumption</b>						
Algeria	8,050	8,300	8,550	8,750	8,850	8,850
Brazil	10,300	10,700	11,000	10,800	11,200	11,200
Canada	6,793	7,977	6,927	7,661	8,800	8,800
China	106,000	105,500	107,000	109,500	113,000	113,500
Egypt	15,800	17,200	17,900	17,700	18,800	18,800
EU-27	116,536	127,000	125,000	122,000	127,000	127,000
India	76,423	70,924	78,150	81,810	84,700	84,700
Iran	15,500	15,800	16,100	15,700	15,000	15,000
Kazakhstan	7,800	7,500	7,800	6,700	8,400	8,900
Morocco	7,225	7,450	8,100	8,250	8,750	8,750
Pakistan	22,400	22,800	23,000	23,200	23,400	23,400
Russia	37,650	38,900	39,600	38,600	38,600	38,600
Turkey	16,800	16,900	17,100	17,200	18,100	18,100
Ukraine	12,300	11,900	12,300	11,600	12,500	13,000
Uzbekistan	7,000	7,100	7,500	7,900	8,000	8,000
Others	118,614	125,823	131,111	133,955	136,147	138,057
<b>Subtotal</b>	589,062	608,345	619,361	623,262	644,760	648,134
<b>United States</b>	28,614	34,293	30,978	30,710	32,065	32,065
<b>World Total</b>	617,676	642,638	650,339	653,972	676,825	680,199
<b>Ending Stocks</b>						
Australia	3,851	3,389	5,593	8,823	7,787	8,623
Canada	4,406	6,547	7,829	7,189	4,989	6,049
China	39,081	45,803	54,425	60,091	64,591	65,011
EU-27	12,429	18,937	16,157	11,693	12,679	12,679
India	5,800	13,430	16,120	15,360	15,590	15,615
Kazakhstan	3,901	3,357	4,795	2,283	6,408	5,908
Russia	4,068	10,743	14,521	13,535	12,135	12,135
Others	45,038	46,971	56,148	57,306	55,876	58,593
<b>Subtotal</b>	118,574	149,177	175,588	176,280	180,055	184,613
<b>United States</b>	8,323	17,867	26,552	23,466	22,545	23,906
<b>World Total</b>	126,897	167,044	202,140	199,746	202,600	208,519

## Regional Wheat Imports, Production, Consumption, and Stocks

Thousand Metric Tons

	2007/08	2008/09	2009/10	2010/11	Nov 2011/12	Dec 2011/12
<b>TY Imports</b>						
North America	6,475	7,128	6,834	6,462	7,100	7,600
Central America	1,460	1,489	1,469	1,678	1,525	1,525
South America	13,092	13,074	13,091	12,935	13,290	13,290
European Union	6,933	7,737	5,519	4,712	7,500	7,500
Other Europe	1,923	1,712	1,696	1,649	1,735	1,735
Former Soviet Union - 12	6,032	6,569	5,415	5,473	6,175	6,175
Middle East	11,810	28,218	22,515	16,830	18,475	18,175
North Africa	21,742	23,472	21,396	24,131	23,000	23,000
Sub-Saharan Africa	10,287	13,707	15,773	14,475	15,485	15,485
East Asia	11,277	11,322	13,745	13,892	13,900	14,700
South Asia	8,215	10,771	7,586	7,662	7,210	7,235
Southeast Asia	11,405	12,324	13,902	16,301	15,450	15,850
Others	2,777	2,663	2,857	2,822	2,875	2,875
<b>Total</b>	<b>113,428</b>	<b>140,186</b>	<b>131,798</b>	<b>129,022</b>	<b>133,720</b>	<b>135,145</b>
<b>Production</b>						
North America	79,468	100,627	91,362	86,908	82,388	83,448
South America	25,435	20,516	22,039	26,351	22,962	24,462
European Union	120,133	151,122	138,816	135,674	137,486	137,486
Other Europe	4,405	4,712	4,609	3,800	4,420	4,413
Former Soviet Union - 12	92,367	115,486	114,056	81,360	112,445	112,445
Middle East	41,040	30,325	38,369	40,175	39,040	39,340
North Africa	13,948	14,352	20,261	16,133	19,025	18,725
Sub-Saharan Africa	5,547	6,103	6,155	5,568	5,786	5,686
East Asia	110,590	113,776	116,281	116,240	118,234	119,154
South Asia	105,070	103,898	111,200	111,020	115,050	115,050
Oceania	13,846	21,697	22,111	28,168	26,277	28,577
Others	143	171	176	181	186	186
<b>Total</b>	<b>611,992</b>	<b>682,785</b>	<b>685,435</b>	<b>651,578</b>	<b>683,299</b>	<b>688,972</b>
<b>Domestic Consumption</b>						
North America	40,907	48,270	44,205	44,771	47,315	47,815
South America	24,346	24,494	25,708	25,523	26,040	26,040
European Union	116,536	127,000	125,000	122,000	127,000	127,000
Other Europe	5,495	5,560	5,469	5,306	5,620	5,520
Former Soviet Union - 12	75,356	75,956	78,040	75,735	78,645	79,755
Middle East	50,758	52,669	53,615	53,860	54,450	54,350
North Africa	35,825	37,475	39,350	39,425	41,250	41,250
Sub-Saharan Africa	15,696	18,605	20,416	20,175	20,632	20,632
East Asia	117,556	117,188	120,020	122,455	126,250	127,350
South Asia	109,638	105,304	113,861	117,401	120,280	120,280
Southeast Asia	11,009	12,054	13,288	14,952	14,960	15,360
Oceania	7,383	8,120	5,835	7,044	7,505	8,005
Others	3,300	3,372	3,309	3,389	3,365	3,365
<b>Total</b>	<b>613,805</b>	<b>636,067</b>	<b>648,116</b>	<b>652,036</b>	<b>673,312</b>	<b>676,722</b>
<b>Ending Stocks</b>						
North America	13,108	24,729	34,901	31,095	27,999	30,420
South America	4,571	4,015	5,481	5,304	3,894	5,794
European Union	12,429	18,937	16,157	11,693	12,679	12,679
Other Europe	1,817	2,176	2,177	1,495	1,465	1,558
Former Soviet Union - 12	13,755	22,094	26,864	23,834	27,635	27,989
Middle East	11,610	11,564	15,050	14,651	13,704	13,604
North Africa	9,186	9,216	11,148	11,633	12,133	11,783
Sub-Saharan Africa	1,203	1,694	2,560	1,907	1,756	1,876
East Asia	41,899	48,637	57,261	63,500	67,894	68,514
South Asia	10,079	17,359	21,430	21,420	21,250	21,275
Southeast Asia	2,771	2,713	2,915	3,795	3,825	3,825
Oceania	4,117	3,606	5,784	9,080	8,046	8,882
Others	352	304	412	339	320	320
<b>Total</b>	<b>126,897</b>	<b>167,044</b>	<b>202,140</b>	<b>199,746</b>	<b>202,600</b>	<b>208,519</b>

NOTES: Regional definitions appear on last page of this circular. Imports are reported on a trade year basis. All other data are reported using local marketing years.



---

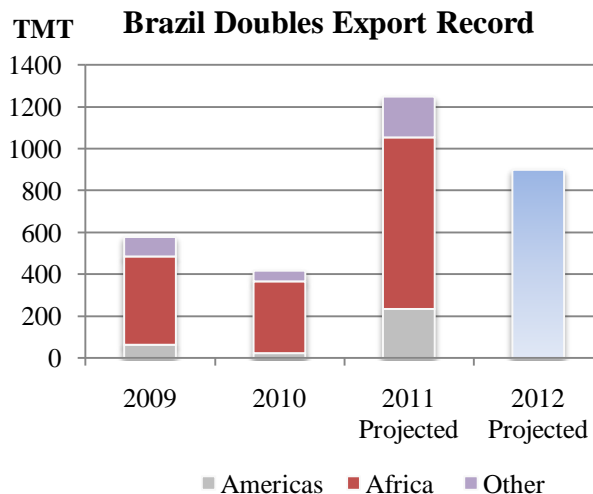
## RICE: WORLD MARKETS AND TRADE

### OVERVIEW

Record 2011 trade climbs even higher as Brazil and Pakistan surpass expectations despite the earlier easing of India's export ban and record shipments from Thailand, Vietnam, and all Mercosur countries. Global production is forecast to remain a record.

### FEATURE

Brazil became the largest exporter in South America this year, surpassing Uruguay for the first time. Record production and competitive prices allowed Brazil to double its previous export record, set in 2009. Relatively high Thai and U.S. prices made Brazil extremely competitive in West Africa and allowed the country to encroach on some traditional U.S. markets, as well. Though exports are likely to drop somewhat in 2012 as production is forecast to return to more normal levels, Brazil is expected to remain a major player for the foreseeable future.



### SELECTED TRADE CHANGES FOR 2011 (unless otherwise noted)

- **Brazil's** exports are lifted 250,000 tons to a record 1.3 million based on increased exports to West Africa.
- **Burma's** exports are cut another 150,000 tons to 750,000 as the pace of exports slows considerably.
- **Pakistan's** exports are boosted 200,000 tons to 3.0 million on a strong pace despite the flood-damaged crop.
- **Indonesia's** imports are raised 575,000 tons in 2011 to 2.8 million and dropped 400,000 tons to 1.0 million in 2012 as shipments arrive earlier than originally expected.
- **Vietnam's** imports are down 100,000 tons to 400,000 in 2012 on higher production. **Cambodia's** exports are, therefore, lowered by the same amount to 700,000 tons.

**World Rice Trade**  
**January/December Year, Thousand Metric Tons**

	2007/08	2008/09	2009/10	2010/11	2011/12 Nov	2011/12 Dec
<b>TY Exports</b>						
Argentina	408	594	468	600	650	650
Australia	48	17	54	350	450	450
Brazil	511	591	430	1,250	900	900
Burma	541	1,052	445	750	750	750
Cambodia	500	800	1,000	1,000	800	700
China	969	783	619	500	600	600
Egypt	750	575	570	120	500	500
EU-27	157	150	282	300	350	350
Guyana	185	244	275	250	230	230
India	3,383	2,123	2,052	3,800	4,500	4,500
Pakistan	3,050	3,187	4,000	3,000	3,750	3,750
Russia	21	90	154	185	150	175
Thailand	10,011	8,570	9,047	10,500	8,000	8,000
Uruguay	742	926	808	975	850	850
Vietnam	4,649	5,950	6,734	7,000	6,700	6,700
Others	571	666	801	934	690	700
<b>Subtotal</b>	26,496	26,318	27,739	31,514	29,870	29,805
<b>United States</b>	3,267	3,017	3,868	3,250	3,050	3,050
<b>World Total</b>	29,763	29,335	31,607	34,764	32,920	32,855
<b>TY Imports</b>						
Bangladesh	1,658	150	660	1,400	750	750
Brazil	417	650	778	540	500	550
Canada	365	322	358	330	340	340
China	295	337	366	600	400	400
Cote d'Ivoire	800	800	840	900	950	950
Cuba	558	457	498	600	525	525
EU-27	1,520	1,383	1,216	1,150	1,070	1,070
Ghana	300	410	320	520	400	400
Hong Kong	399	397	390	410	415	415
Indonesia	350	250	1,150	2,775	1,400	1,000
Iran	1,430	1,470	1,000	1,400	1,500	1,500
Iraq	975	1,089	1,140	1,150	1,200	1,200
Japan	533	750	649	700	700	700
Korea, South	282	245	320	370	350	365
Malaysia	1,039	1,086	907	1,040	1,130	1,130
Mexico	578	610	598	655	700	700
Mozambique	300	385	325	400	375	375
Nigeria	1,800	2,000	2,000	2,300	2,200	2,200
Philippines	2,500	2,000	2,400	1,500	2,200	2,200
Saudi Arabia	1,166	1,072	1,069	1,100	1,150	1,150
Senegal	860	715	685	800	750	750
South Africa	650	745	733	760	750	750
Syria	230	250	315	350	350	350
United Arab Emirates	350	380	400	420	430	430
Vietnam	300	500	400	500	500	400
Others	8,199	7,882	8,799	8,997	8,872	8,927
<b>Subtotal</b>	27,854	26,335	28,316	31,667	29,907	29,527
<b>Unaccounted</b>	1,258	2,318	2,729	2,482	2,343	2,678
<b>United States</b>	651	682	562	615	670	650
<b>World Total</b>	29,763	29,335	31,607	34,764	32,920	32,855

TY=Trade Year, see Endnotes.

Note about dates: 2011/12 is calendar year 2012, 2010/11 is calendar year 2011, and so on.

**World Rice Production, Consumption, and Stocks**  
**Local Marketing Years, Thousand Metric Tons**

	2007/08	2008/09	2009/10	2010/11	2011/12 Nov	2011/12 Dec
<b>Milled Production</b>						
Bangladesh	28,800	31,000	31,000	32,900	33,000	33,000
Brazil	8,199	8,570	7,929	9,257	8,840	8,650
Burma	10,730	10,150	10,550	10,750	10,500	10,500
Cambodia	4,238	4,520	4,780	5,200	4,800	4,800
China	130,224	134,330	136,570	137,000	141,000	140,500
Egypt	4,385	4,402	4,300	3,100	4,700	4,700
India	96,690	99,180	89,090	95,300	100,000	100,000
Indonesia	37,000	38,310	36,370	35,500	37,300	37,300
Japan	7,930	8,029	7,711	7,720	7,680	7,680
Korea, South	4,408	4,843	4,916	4,295	4,240	4,224
Pakistan	5,700	6,900	6,800	4,700	6,650	6,650
Philippines	10,479	10,755	9,772	10,539	10,650	10,500
Sri Lanka	2,200	2,227	2,650	2,400	2,900	2,900
Thailand	19,800	19,850	20,260	20,262	20,300	20,300
Vietnam	24,375	24,393	24,993	26,300	25,430	26,150
Others	30,824	33,493	35,693	37,001	36,929	36,947
<b>Subtotal</b>	425,982	440,952	433,384	442,224	454,919	454,801
<b>United States</b>	6,288	6,546	7,133	7,593	6,035	6,035
<b>World Total</b>	432,270	447,498	440,517	449,817	460,954	460,836
<b>Consumption and Residual</b>						
Bangladesh	30,747	31,000	31,600	33,800	34,200	34,200
Brazil	8,350	8,400	8,477	8,400	8,500	8,400
Burma	10,249	9,648	9,850	9,900	9,900	10,000
Cambodia	3,788	3,770	3,810	4,220	4,020	4,120
China	127,450	133,000	134,320	135,000	139,000	138,500
Egypt	3,340	4,000	3,670	3,400	3,800	3,800
India	90,466	91,090	85,690	90,000	94,000	94,000
Indonesia	36,350	37,100	38,000	39,000	39,550	39,550
Iran	3,000	3,100	2,950	2,900	3,000	3,000
Japan	8,162	8,326	8,200	8,125	8,250	8,250
Korea, South	4,670	4,788	4,765	4,837	4,800	4,800
Nigeria	3,910	4,100	4,450	4,890	4,879	4,879
Philippines	13,499	13,100	13,125	13,150	13,175	13,175
Thailand	9,600	9,500	10,200	10,500	10,700	10,700
Vietnam	19,400	19,000	19,150	19,400	19,550	19,550
Others	48,605	50,179	52,496	53,525	55,015	54,945
<b>Subtotal</b>	423,360	431,849	433,839	442,911	454,299	454,044
<b>United States</b>	4,042	4,082	4,016	4,358	4,027	4,027
<b>World Total</b>	427,402	435,931	437,855	447,269	458,326	458,071
<b>Ending Stocks</b>						
China	37,762	38,546	40,534	42,572	44,447	44,447
India	13,000	19,000	20,500	23,000	24,500	24,500
Indonesia	5,607	7,057	6,577	5,852	5,987	4,602
Japan	2,556	2,715	2,693	2,788	2,768	2,768
Philippines	4,418	4,673	3,520	2,409	2,084	1,934
Thailand	2,707	4,787	6,100	5,562	7,262	7,262
Vietnam	2,018	1,961	1,470	1,870	1,407	2,170
Others	10,963	11,817	11,617	11,176	10,906	10,620
<b>Subtotal</b>	79,031	90,556	93,011	95,229	99,361	98,303
<b>United States</b>	935	977	1,184	1,514	1,205	1,205
<b>World Total</b>	79,966	91,533	94,195	96,743	100,566	99,508

Note: All data are reported on a milled basis.

## Regional Rice Imports, Production, Consumption, and Stocks

Thousand Metric Tons

	2007/08	2008/09	2009/10	2010/11	Nov 2011/12	Dec 2011/12
<b>TY Imports</b>						
North America	1,594	1,614	1,518	1,600	1,710	1,690
Caribbean	1,028	906	989	1,100	1,015	1,015
South America	1,105	1,116	1,377	1,292	1,272	1,322
Other Europe	98	126	126	135	135	135
Former Soviet Union - 12	361	412	401	377	360	360
Middle East	5,519	5,349	5,239	5,645	5,870	5,870
North Africa	275	155	345	390	375	375
Sub-Saharan Africa	7,569	8,175	8,248	9,260	9,155	9,185
East Asia	1,639	1,877	1,961	2,255	2,050	2,065
South Asia	2,208	528	1,013	1,835	1,090	1,090
Southeast Asia	4,640	4,542	5,562	6,413	5,735	5,235
Others	2,469	2,217	2,099	1,980	1,810	1,835
<b>Total</b>	<b>28,505</b>	<b>27,017</b>	<b>28,878</b>	<b>32,282</b>	<b>30,577</b>	<b>30,177</b>
<b>Production</b>						
North America	6,466	6,702	7,310	7,743	6,168	6,168
Caribbean	796	853	975	963	1,017	1,017
South America	15,461	16,217	15,444	17,200	16,199	16,009
European Union	1,757	1,620	1,887	1,867	1,899	1,899
Former Soviet Union - 12	988	906	1,095	1,223	1,212	1,237
Middle East	2,318	2,026	2,002	2,061	2,040	2,060
North Africa	4,406	4,423	4,335	3,140	4,740	4,740
Sub-Saharan Africa	8,108	10,268	11,409	12,319	12,269	12,269
East Asia	145,044	150,087	152,218	151,631	155,716	155,200
South Asia	136,570	142,432	132,775	138,475	145,800	145,800
Southeast Asia	109,790	111,279	110,269	111,962	112,461	113,031
Others	566	685	798	1,233	1,433	1,406
<b>Total</b>	<b>432,270</b>	<b>447,498</b>	<b>440,517</b>	<b>449,817</b>	<b>460,954</b>	<b>460,836</b>
<b>Domestic Consumption</b>						
North America	5,130	5,172	5,154	5,505	5,242	5,242
Central America	1,104	1,107	1,125	1,129	1,146	1,146
Caribbean	1,944	1,802	1,905	2,064	2,031	2,031
South America	14,194	14,534	14,697	14,705	14,792	14,692
European Union	3,185	2,925	2,860	2,900	2,830	2,830
Former Soviet Union - 12	1,303	1,242	1,279	1,355	1,382	1,382
Middle East	7,537	7,577	7,515	7,648	7,875	7,875
North Africa	3,636	4,133	4,038	3,790	4,195	4,195
Sub-Saharan Africa	16,523	17,434	19,444	21,232	21,472	21,502
East Asia	143,281	149,584	150,804	151,183	155,445	154,945
South Asia	129,831	131,370	126,348	132,220	137,350	137,250
Southeast Asia	97,272	96,739	98,984	101,014	101,901	102,101
Others	688	564	616	660	705	705
<b>Total</b>	<b>425,628</b>	<b>434,183</b>	<b>434,769</b>	<b>445,405</b>	<b>456,366</b>	<b>455,896</b>
<b>Ending Stocks</b>						
North America	1,128	1,143	1,354	1,664	1,346	1,346
Central America	265	218	244	252	254	254
Caribbean	134	109	129	146	152	152
South America	1,743	2,229	1,856	2,135	2,067	1,927
European Union	1,126	1,020	1,120	987	876	876
Middle East	2,172	1,999	1,654	1,511	1,462	1,471
North Africa	685	557	497	157	577	577
Sub-Saharan Africa	983	974	1,002	1,245	1,167	1,167
East Asia	41,284	42,488	45,038	46,971	48,612	48,611
South Asia	14,306	21,393	22,431	24,671	26,201	26,101
Southeast Asia	15,950	19,249	18,669	16,779	17,565	16,793
Oceania	52	26	46	45	107	53
Others	138	128	155	180	180	180
<b>Total</b>	<b>79,966</b>	<b>91,533</b>	<b>94,195</b>	<b>96,743</b>	<b>100,566</b>	<b>99,508</b>

NOTES: Regional definitions appear on last page of this circular. Imports are reported on a trade year basis. All other data are reported using local marketing years.

---

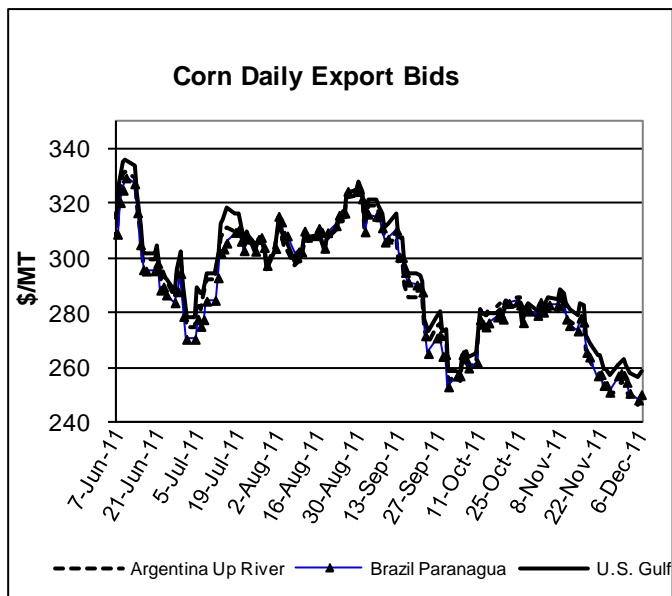
## COARSE GRAINS: WORLD MARKETS AND TRADE

### OVERVIEW

This month, global corn trade for 2011/12 is lower on weaker demand from the EU. World production is up considerably due to larger crops in China, the EU and Canada. While exportable supplies of Ukrainian corn are unchanged, the country is still significantly undercutting competitor prices. The season-average farm price for U.S. corn is lowered, but remains a record.

### PRICES

U.S. corn export quotes generally fell throughout the past month over concerns about weak export demand and indications of increasing global wheat supplies. Prices ended at \$258/ton, \$30/ton lower than at the time of the November WASDE release. The Argentine price discount to U.S. corn widened with good new-crop conditions and ample old-crop exportable supplies.



### TRADE CHANGES IN 2011/12

#### Selected Exporters

- **Australian sorghum** is raised 200,000 tons to 1.2 million due to a larger crop and less competition from the United States.
- **U.S. sorghum** is slashed 500,000 tons to 1.9 million, the lowest in 40 years, on extremely slow sales.
- **Serbian corn** is cut 400,000 tons to 1.6 million as water levels in the Danube impede competitiveness and EU demand slows.
- **Argentine barley** is boosted 200,000 tons to a record 2.2 million on the pace of new crop sales.
- **Australian barley** is cut 400,000 tons to 3.6 million on reduced exportable supplies on significantly lower carry-in stocks.
- **Russian barley** is raised 400,000 tons to 2.0 million on a strong export pace.

---

### **Selected Importers**

- **EU corn** is cut 500,000 tons to 3.0 million on slackening import licenses and a larger crop.
- **Algerian barley** is boosted 250,000 tons to 500,000 based on purchases to date.
- **Mexican sorghum** is cut 300,000 tons to 1.8 million on slow import pace and increased imports of feed-quality wheat.

**World Coarse Grain Trade**  
**October/September Year, Thousand Metric Tons**

	2007/08	2008/09	2009/10	2010/11	2011/12 Nov	2011/12 Dec
<b>TY Exports</b>						
Argentina	17,786	10,241	19,028	18,561	22,805	23,005
Australia	3,895	4,873	4,414	4,998	5,210	5,010
Brazil	8,032	7,187	8,627	11,588	8,505	8,505
Canada	6,379	3,852	3,068	4,234	2,750	2,800
EU-27	4,679	4,338	4,267	5,730	4,755	4,755
India	5,539	2,642	2,072	2,870	2,300	2,300
Russia	1,419	4,945	2,528	1,030	2,215	2,615
Serbia	132	1,478	1,365	2,015	2,005	1,605
South Africa	1,145	2,159	1,634	2,859	2,325	2,320
Ukraine	5,909	11,380	10,936	7,410	16,405	16,410
Others	5,656	6,020	7,085	4,702	5,525	5,525
<b>Subtotal</b>	60,571	59,115	65,024	65,997	74,800	74,850
<b>United States</b>	68,289	51,558	53,989	49,277	43,650	43,150
<b>World Total</b>	128,860	110,673	119,013	115,274	118,450	118,000
<b>TY Imports</b>						
Algeria	2,433	2,067	2,576	2,975	2,850	3,100
Brazil	1,258	1,497	1,049	879	855	855
Canada	3,187	1,900	2,011	1,045	1,465	1,465
Chile	1,969	1,317	1,275	1,325	1,475	1,475
China	1,157	1,651	3,777	2,710	4,925	4,925
Colombia	3,603	3,483	4,102	4,155	4,455	4,455
Dominican Republic	1,074	973	1,071	1,050	1,050	1,050
Egypt	4,182	5,093	5,897	5,430	6,055	6,055
EU-27	19,892	2,988	3,012	8,320	3,665	3,165
Indonesia	294	317	1,321	2,500	1,500	1,500
Iran	3,900	5,000	5,100	3,900	3,900	3,900
Israel	1,776	1,295	1,592	1,460	1,410	1,410
Japan	19,210	19,611	19,198	18,595	19,135	19,135
Jordan	889	785	713	900	900	900
Korea, South	9,358	7,248	8,509	8,167	8,060	8,060
Malaysia	3,181	2,447	3,107	2,700	3,300	3,300
Mexico	11,011	10,465	10,913	10,533	12,025	11,725
Morocco	2,180	1,833	2,202	2,100	2,200	2,200
Peru	1,592	1,520	1,886	1,985	1,700	1,700
Saudi Arabia	9,968	9,186	9,076	7,905	9,205	9,205
Syria	2,561	2,834	2,274	1,900	2,500	2,500
Taiwan	4,684	4,658	4,663	4,450	4,550	4,550
Tunisia	1,182	875	1,202	1,200	1,000	1,000
Venezuela	1,103	1,340	2,198	1,200	1,600	1,600
Vietnam	700	1,250	1,600	1,200	1,300	1,300
Others	14,263	13,709	13,024	12,713	12,086	12,091
<b>Subtotal</b>	126,607	105,342	113,348	111,297	113,166	112,621
<b>Unaccounted</b>	-1,357	2,524	3,390	1,528	3,059	3,154
<b>United States</b>	3,610	2,807	2,275	2,449	2,225	2,225
<b>World Total</b>	128,860	110,673	119,013	115,274	118,450	118,000

TY=Trade Year, see Endnotes.

**World Coarse Grains Production, Consumption, and Stocks**  
**Local Marketing Years, Thousand Metric Tons**

	2007/08	2008/09	2009/10	2010/11	2011/12 Nov	2011/12 Dec
<b>Production</b>						
Argentina	27,118	19,634	28,531	30,498	37,410	37,410
Australia	12,895	12,282	10,920	11,762	12,377	12,907
Brazil	60,520	53,486	58,412	60,480	63,333	63,833
Canada	27,841	27,184	22,477	22,263	21,227	21,866
China	158,863	172,424	169,604	183,405	190,810	198,060
Ethiopia	8,302	9,034	8,046	9,925	9,025	9,025
EU-27	136,580	162,102	155,038	139,460	145,664	146,701
India	40,630	39,550	33,890	42,000	40,370	40,370
Indonesia	8,500	8,700	6,900	6,800	8,100	8,100
Mexico	30,578	32,252	27,254	29,372	28,029	27,996
Nigeria	24,000	26,670	28,150	28,740	27,900	27,900
Russia	29,171	40,881	31,843	16,416	31,500	31,500
South Africa	13,690	13,084	13,881	11,327	13,016	12,951
Turkey	9,445	10,408	11,176	10,095	10,695	10,695
Ukraine	14,592	26,275	24,143	21,442	31,400	31,400
Others	128,249	131,329	136,530	143,802	141,702	141,209
<b>Subtotal</b>	730,974	785,295	766,795	767,787	812,558	821,923
<b>United States</b>	349,861	325,867	348,755	330,230	323,265	323,265
<b>World Total</b>	1,080,835	1,111,162	1,115,550	1,098,017	1,135,823	1,145,188
<b>Domestic Consumption</b>						
Argentina	9,367	8,768	10,054	11,033	11,725	11,725
Brazil	44,605	48,191	49,714	52,758	54,798	55,298
Canada	24,023	22,892	22,216	20,914	20,050	20,436
China	157,783	161,100	172,975	183,990	197,340	199,340
Egypt	11,477	12,162	13,072	13,195	11,500	11,500
EU-27	154,855	151,855	150,080	151,955	147,605	147,605
India	35,500	36,500	32,000	38,350	38,600	38,600
Japan	19,460	19,965	19,645	18,730	19,365	19,365
Mexico	40,235	42,060	40,865	39,035	40,420	40,090
Nigeria	24,000	26,550	27,950	28,550	28,050	28,050
Russia	28,617	33,011	30,440	18,181	28,100	27,900
Saudi Arabia	9,480	9,475	9,700	9,000	9,700	9,700
South Africa	10,143	10,468	10,833	10,828	11,168	10,983
Turkey	10,565	10,700	10,870	10,895	11,350	11,350
Ukraine	11,934	13,696	12,964	13,792	14,200	13,700
Others	190,764	195,505	197,855	206,906	210,893	210,618
<b>Subtotal</b>	783,380	805,261	819,048	829,218	858,128	859,638
<b>United States</b>	274,533	275,978	295,337	297,952	290,688	291,070
<b>World Total</b>	1,057,913	1,081,239	1,114,385	1,127,170	1,148,816	1,150,708
<b>Ending Stocks</b>						
Argentina	3,284	1,704	1,430	2,405	3,813	3,600
Brazil	12,703	12,450	10,287	9,909	10,743	10,794
Canada	4,010	6,326	5,650	3,529	3,421	3,574
China	39,404	52,158	52,359	54,314	52,438	57,694
EU-27	12,726	20,844	25,854	15,699	12,668	13,205
South Africa	3,266	4,327	5,367	2,967	3,650	3,020
Ukraine	1,659	2,374	2,209	2,071	3,169	3,676
Others	42,130	46,921	44,040	42,979	41,246	40,919
<b>Subtotal</b>	119,182	147,104	147,196	133,873	131,148	136,482
<b>United States</b>	45,059	47,060	48,133	32,303	23,975	24,174
<b>World Total</b>	164,241	194,164	195,329	166,176	155,123	160,656



## Regional Coarse Grains Imports, Production, Consumption, and Stocks

Thousand Metric Tons

	2007/08	2008/09	2009/10	2010/11	Nov 2011/12	Dec 2011/12
<b>TY Imports</b>						
North America	17,808	15,172	15,199	14,027	15,715	15,415
Central America	2,681	2,491	2,537	2,755	2,950	2,950
Caribbean	2,239	2,011	2,139	2,200	2,210	2,210
South America	10,328	9,745	11,108	10,547	10,645	10,645
European Union	19,892	2,988	3,012	8,320	3,665	3,165
Former Soviet Union - 12	1,062	664	451	1,125	585	585
Middle East	21,810	21,247	21,318	18,172	20,050	20,050
North Africa	10,757	10,592	13,115	12,530	12,855	13,105
Sub-Saharan Africa	3,009	3,735	2,826	1,882	1,955	1,960
East Asia	34,662	33,349	36,276	34,052	36,800	36,800
Southeast Asia	4,746	5,405	6,725	7,115	7,115	7,115
Others	1,223	750	917	1,021	846	846
<b>Total</b>	<b>130,217</b>	<b>108,149</b>	<b>115,623</b>	<b>113,746</b>	<b>115,391</b>	<b>114,846</b>
<b>Production</b>						
North America	408,280	385,303	398,486	381,865	372,521	373,127
South America	99,917	84,977	98,905	103,763	114,059	114,559
European Union	136,580	162,102	155,038	139,460	145,664	146,701
Other Europe	9,370	12,357	11,800	12,190	11,630	11,597
Former Soviet Union - 12	54,191	78,966	67,580	47,284	75,745	75,345
Middle East	18,594	15,827	18,829	18,499	18,391	18,391
North Africa	9,894	10,219	14,891	12,359	9,782	9,722
Sub-Saharan Africa	90,972	96,200	97,111	104,851	102,261	102,196
East Asia	161,053	174,593	171,474	185,491	192,921	200,171
South Asia	47,105	45,688	40,331	48,358	46,653	46,653
Southeast Asia	26,882	27,710	25,386	27,186	28,870	28,870
Oceania	13,542	12,929	11,567	12,409	13,024	13,554
Others	4,455	4,291	4,152	4,302	4,302	4,302
<b>Total</b>	<b>1,080,835</b>	<b>1,111,162</b>	<b>1,115,550</b>	<b>1,098,017</b>	<b>1,135,823</b>	<b>1,145,188</b>
<b>Domestic Consumption</b>						
North America	338,791	340,930	358,418	357,901	351,158	351,596
South America	73,397	76,040	79,382	84,388	87,703	88,203
European Union	154,855	151,855	150,080	151,955	147,605	147,605
Other Europe	10,423	10,895	10,757	10,876	10,811	10,811
Former Soviet Union - 12	50,587	58,263	54,905	41,574	54,245	53,395
Middle East	38,192	37,833	38,469	37,894	39,284	39,284
North Africa	21,142	21,187	24,679	25,381	23,985	23,985
Sub-Saharan Africa	88,683	96,224	95,922	103,765	101,574	101,389
East Asia	192,632	195,849	207,611	217,512	231,349	233,349
South Asia	42,183	42,673	38,599	44,838	45,013	45,013
Southeast Asia	29,476	30,277	31,158	32,765	34,810	34,810
Oceania	7,666	7,897	7,702	7,977	8,577	8,452
Others	9,314	8,953	8,888	9,238	9,438	9,438
<b>Total</b>	<b>1,057,341</b>	<b>1,078,876</b>	<b>1,106,570</b>	<b>1,126,064</b>	<b>1,145,552</b>	<b>1,147,330</b>
<b>Ending Stocks</b>						
North America	53,810	58,626	55,725	38,513	29,635	29,960
South America	19,607	16,652	14,859	15,377	17,710	17,548
European Union	12,726	20,844	25,854	15,699	12,668	13,205
Other Europe	1,340	1,517	1,653	1,657	1,077	1,444
Former Soviet Union - 12	4,801	9,118	7,226	5,471	8,397	8,476
Middle East	8,663	8,496	9,390	8,354	7,346	7,346
North Africa	2,443	2,743	5,401	4,952	3,729	3,869
Sub-Saharan Africa	7,775	9,545	10,817	9,719	9,956	9,326
East Asia	43,975	55,897	55,831	57,692	55,794	61,049
South Asia	1,821	2,086	1,670	2,457	1,922	1,922
Southeast Asia	3,475	4,446	3,329	3,687	3,617	3,617
Oceania	2,737	3,352	2,785	1,820	2,490	2,112
Others	1,068	842	789	778	782	782
<b>Total</b>	<b>164,241</b>	<b>194,164</b>	<b>195,329</b>	<b>166,176</b>	<b>155,123</b>	<b>160,656</b>

NOTES: Regional definitions appear on last page of this circular. Imports are reported on a trade year basis. All other data are reported using local marketing years.

**World Corn Trade**  
**October/September Year, Thousand Metric Tons**

	2007/08	2008/09	2009/10	2010/11	2011/12 Nov	2011/12 Dec
<b>TY Exports</b>						
Argentina	15,676	8,458	16,971	15,159	18,500	18,500
Brazil	7,883	7,178	8,623	11,583	8,500	8,500
Canada	944	366	184	1,657	500	500
EU-27	591	1,743	1,519	1,000	2,000	2,000
India	5,077	2,551	1,917	2,800	2,200	2,200
Paraguay	1,461	1,862	1,388	1,203	1,500	1,500
Russia	49	1,331	427	50	600	600
Serbia	128	1,467	1,343	2,000	2,000	1,600
South Africa	1,124	2,111	1,586	2,839	2,300	2,300
Ukraine	2,074	5,497	5,072	5,000	12,000	12,000
Others	2,616	3,641	4,199	2,790	3,250	3,250
<b>Subtotal</b>	<b>37,623</b>	<b>36,205</b>	<b>43,229</b>	<b>46,081</b>	<b>53,350</b>	<b>52,950</b>
<b>United States</b>	<b>60,663</b>	<b>47,758</b>	<b>49,721</b>	<b>45,254</b>	<b>41,000</b>	<b>41,000</b>
<b>World Total</b>	<b>98,286</b>	<b>83,963</b>	<b>92,950</b>	<b>91,335</b>	<b>94,350</b>	<b>93,950</b>
<b>TY Imports</b>						
Algeria	2,166	1,903	2,569	2,700	2,600	2,600
Canada	3,117	1,844	1,961	974	1,400	1,400
China	41	47	1,296	979	3,000	3,000
Colombia	3,267	3,068	3,651	3,600	3,900	3,900
Costa Rica	674	586	626	700	700	700
Cuba	811	708	736	800	800	800
Dominican Republic	1,074	973	1,071	1,050	1,050	1,050
Egypt	4,151	5,031	5,832	5,400	6,000	6,000
EU-27	14,016	2,754	2,931	7,300	3,500	3,000
Indonesia	294	317	1,321	2,500	1,500	1,500
Iran	2,900	3,600	4,300	3,500	3,500	3,500
Israel	1,374	846	1,053	1,050	1,100	1,100
Japan	16,614	16,533	15,979	15,655	16,100	16,100
Korea, South	9,311	7,188	8,461	8,107	8,000	8,000
Malaysia	3,181	2,447	3,107	2,700	3,300	3,300
Mexico	9,556	7,764	8,298	8,000	9,800	9,800
Morocco	1,858	1,566	1,802	1,800	1,900	1,900
Peru	1,469	1,429	1,782	1,900	1,600	1,600
Saudi Arabia	1,961	1,482	1,872	1,900	2,000	2,000
Syria	1,661	1,784	2,024	1,700	2,000	2,000
Taiwan	4,527	4,532	4,521	4,300	4,400	4,400
Thailand	425	900	500	600	800	800
Tunisia	804	646	866	750	800	800
Venezuela	1,103	1,336	2,198	1,200	1,600	1,600
Vietnam	700	1,250	1,600	1,200	1,300	1,300
Others	12,400	11,320	9,752	9,048	9,080	9,080
<b>Subtotal</b>	<b>99,455</b>	<b>81,854</b>	<b>90,109</b>	<b>89,413</b>	<b>91,730</b>	<b>91,230</b>
<b>Unaccounted</b>	<b>-1,670</b>	<b>1,772</b>	<b>2,604</b>	<b>1,238</b>	<b>2,220</b>	<b>2,320</b>
<b>United States</b>	<b>501</b>	<b>337</b>	<b>237</b>	<b>684</b>	<b>400</b>	<b>400</b>
<b>World Total</b>	<b>98,286</b>	<b>83,963</b>	<b>92,950</b>	<b>91,335</b>	<b>94,350</b>	<b>93,950</b>

TY=Trade Year, see Endnotes.

The large, negative Unaccounted in 2007/08 arises largely from timing differences between declared exports and Japan's and Korea's declared imports.

**World Corn Production, Consumption, and Stocks**  
**Local Marketing Years, Thousand Metric Tons**

	2007/08	2008/09	2009/10	2010/11	2011/12 Nov	2011/12 Dec
<b>Production</b>						
Argentina	22,017	15,500	23,300	22,500	29,000	29,000
Brazil	58,600	51,000	56,100	57,500	61,000	61,000
Canada	11,649	10,592	9,561	11,714	10,000	10,700
China	152,300	165,914	163,974	177,245	184,500	191,750
EU-27	47,555	62,321	56,947	55,795	62,851	63,888
India	18,960	19,730	16,720	21,280	21,000	21,000
Indonesia	8,500	8,700	6,900	6,800	8,100	8,100
Mexico	23,600	24,226	20,374	21,130	20,500	20,500
Nigeria	6,500	7,970	8,950	9,340	8,700	8,700
Philippines	7,277	6,853	6,231	7,271	7,000	7,000
Russia	3,798	6,682	3,963	3,075	6,300	6,300
Serbia	4,054	6,130	6,400	6,800	6,300	6,267
South Africa	13,164	12,567	13,420	10,924	12,500	12,500
Ukraine	7,421	11,447	10,486	11,919	21,000	21,000
Vietnam	4,600	4,432	4,607	5,000	5,400	5,400
Others	73,526	77,945	78,752	83,104	82,151	81,731
<b>Subtotal</b>	463,521	492,009	486,685	511,397	546,302	554,836
<b>United States</b>	331,177	307,142	332,549	316,165	312,687	312,687
<b>World Total</b>	794,698	799,151	819,234	827,562	858,989	867,523
<b>Total Consumption</b>						
Argentina	6,800	6,400	6,900	7,100	7,800	7,800
Brazil	42,500	45,500	47,000	49,500	52,000	52,000
Canada	13,769	11,687	11,606	11,434	11,000	11,500
China	150,000	153,000	165,000	176,000	189,000	191,000
Egypt	10,400	11,100	12,000	12,100	10,400	10,400
EU-27	64,000	61,600	59,300	62,500	64,500	64,500
India	14,200	17,000	15,100	18,300	18,900	18,900
Indonesia	8,500	8,900	8,800	9,200	9,500	9,500
Japan	16,600	16,700	16,300	15,600	16,100	16,100
Korea, South	8,638	7,894	8,382	8,223	8,100	8,100
Mexico	32,000	32,400	30,200	28,700	30,300	30,300
Nigeria	6,550	7,900	8,800	9,200	8,900	8,900
Philippines	7,150	7,300	6,500	7,200	7,300	7,300
South Africa	9,600	9,900	10,300	10,300	10,600	10,500
Ukraine	5,750	5,850	5,700	6,550	7,750	7,750
Others	114,817	119,192	121,950	126,136	131,609	131,384
<b>Subtotal</b>	511,660	524,161	540,905	558,381	586,790	589,065
<b>United States</b>	261,632	259,272	281,590	284,990	279,667	279,540
<b>World Total</b>	773,292	783,433	822,495	843,371	866,457	868,605
<b>Ending Stocks</b>						
Argentina	2,190	976	879	1,289	2,512	2,499
Brazil	12,579	12,084	9,989	9,489	10,489	10,489
China	38,394	51,183	51,302	53,415	51,715	56,965
EU-27	4,417	6,149	5,208	4,803	4,654	5,191
Iran	2,474	2,502	2,795	2,345	1,695	1,695
South Africa	3,090	4,113	5,169	2,818	3,519	2,843
Ukraine	825	937	672	1,051	2,311	2,311
Others	26,399	26,893	24,686	24,402	23,257	23,651
<b>Subtotal</b>	90,368	104,837	100,700	99,612	100,152	105,644
<b>United States</b>	41,255	42,504	43,380	28,659	21,418	21,545
<b>World Total</b>	131,623	147,341	144,080	128,271	121,570	127,189

## Regional Corn Imports, Production, Consumption, and Stocks

Thousand Metric Tons

	2007/08	2008/09	2009/10	2010/11	Nov 2011/12	Dec 2011/12
<b>TY Imports</b>						
North America	13,174	9,945	10,496	9,658	11,600	11,600
Central America	2,678	2,491	2,537	2,750	2,950	2,950
South America	9,115	8,238	9,469	8,522	8,680	8,680
European Union	14,016	2,754	2,931	7,300	3,500	3,000
Former Soviet Union - 12	651	393	254	350	200	200
Middle East	10,116	9,462	11,215	10,025	10,475	10,475
North Africa	9,593	9,574	11,725	11,125	11,850	11,850
Sub-Saharan Africa	2,174	2,915	1,909	1,261	1,360	1,360
East Asia	30,746	28,481	30,386	29,171	31,630	31,630
Southeast Asia	4,715	5,391	6,709	7,105	7,105	7,105
Caribbean	2,239	2,011	2,139	2,200	2,210	2,210
Others	739	536	576	630	570	570
<b>Total</b>	<b>99,956</b>	<b>82,191</b>	<b>90,346</b>	<b>90,097</b>	<b>92,130</b>	<b>91,630</b>
<b>Production</b>						
North America	366,426	341,960	362,484	349,009	343,187	343,887
South America	90,887	76,109	89,367	90,303	100,985	100,985
European Union	47,555	62,321	56,947	55,795	62,851	63,888
Other Europe	7,239	9,965	9,685	10,135	9,535	9,502
Former Soviet Union - 12	13,749	21,741	17,690	18,307	31,800	31,400
Middle East	6,062	6,529	6,163	5,806	5,798	5,798
North Africa	6,376	6,847	6,482	6,702	4,002	4,002
Sub-Saharan Africa	47,156	49,421	53,837	54,938	55,623	55,623
East Asia	154,009	167,580	165,379	178,883	186,151	193,401
South Asia	24,090	24,780	21,840	26,350	26,070	26,070
Central America	3,285	3,222	3,041	3,188	3,188	3,188
Southeast Asia	26,659	27,485	25,162	26,966	28,650	28,650
Others	1,205	1,191	1,157	1,180	1,149	1,129
<b>Total</b>	<b>794,698</b>	<b>799,151</b>	<b>819,234</b>	<b>827,562</b>	<b>858,989</b>	<b>867,523</b>
<b>Domestic Consumption</b>						
North America	307,401	303,359	323,396	325,124	320,967	321,340
South America	65,837	67,579	70,189	73,390	77,090	77,090
European Union	64,000	61,600	59,300	62,500	64,500	64,500
Other Europe	7,766	8,351	8,354	8,525	8,485	8,485
Former Soviet Union - 12	12,720	14,655	12,865	13,160	17,060	16,860
Middle East	15,775	15,835	16,625	16,686	17,105	17,105
North Africa	15,750	16,125	17,650	18,200	16,600	16,600
Sub-Saharan Africa	44,068	48,948	51,050	54,225	54,219	54,119
East Asia	181,503	184,015	195,811	205,903	219,255	221,255
South Asia	19,531	22,050	20,320	23,470	24,070	24,070
Southeast Asia	29,249	30,043	30,943	32,550	34,600	34,600
Central America	5,900	5,800	5,700	5,925	6,125	6,125
Others	3,406	3,235	3,225	3,375	3,350	3,325
<b>Total</b>	<b>772,906</b>	<b>781,595</b>	<b>815,428</b>	<b>843,033</b>	<b>863,426</b>	<b>865,474</b>
<b>Ending Stocks</b>						
North America	46,843	47,896	46,527	31,656	24,215	24,542
South America	18,141	15,282	13,769	13,487	15,870	15,857
European Union	4,417	6,149	5,208	4,803	4,654	5,191
Other Europe	1,026	1,184	1,369	1,339	759	1,126
Former Soviet Union - 12	1,271	1,886	1,391	1,728	3,802	3,613
Middle East	4,041	4,029	4,513	3,618	2,771	2,771
North Africa	1,583	2,202	2,394	2,161	1,403	1,403
Sub-Saharan Africa	6,027	7,591	9,664	7,673	8,158	7,482
East Asia	42,373	54,297	54,100	56,140	54,466	59,716
South Asia	1,338	1,498	992	1,177	1,072	1,072
Southeast Asia	3,475	4,446	3,329	3,687	3,617	3,617
Central America	765	613	498	486	484	484
Others	323	268	326	316	299	315
<b>Total</b>	<b>131,623</b>	<b>147,341</b>	<b>144,080</b>	<b>128,271</b>	<b>121,570</b>	<b>127,189</b>

NOTES: Regional definitions appear on last page of this circular. Imports are reported on a trade year basis. All other data are reported using local marketing years.

**World Barley Trade**  
**October/September Year, Thousand Metric Tons**

	2007/08	2008/09	2009/10	2010/11	2011/12 Nov	2011/12 Dec
<b>TY Exports</b>						
Argentina	937	871	549	1,531	2,000	2,200
Australia	3,377	3,278	3,846	4,088	4,000	3,600
Canada	2,947	1,618	1,203	1,052	700	700
China	81	17	13	9	15	15
Croatia	3	4	7	5	5	5
Egypt	67	7	14	5	10	10
EU-27	3,888	2,374	2,389	4,500	2,500	2,500
India	371	37	31	20	50	50
Kazakhstan	806	314	354	200	250	250
Kenya	2	1	2	5	5	5
Moldova	9	31	43	25	25	25
Russia	1,277	3,598	2,086	969	1,600	2,000
Serbia	4	11	22	15	5	5
Turkey	0	3	801	50	150	150
Ukraine	3,814	5,871	5,752	2,400	4,400	4,400
Others	110	10	13	15	0	0
<b>Subtotal</b>	<b>17,693</b>	<b>18,045</b>	<b>17,125</b>	<b>14,889</b>	<b>15,715</b>	<b>15,915</b>
<b>United States</b>	<b>901</b>	<b>158</b>	<b>152</b>	<b>181</b>	<b>200</b>	<b>200</b>
<b>World Total</b>	<b>18,594</b>	<b>18,203</b>	<b>17,277</b>	<b>15,070</b>	<b>15,915</b>	<b>16,115</b>
<b>TY Imports</b>						
Algeria	266	164	6	275	250	500
Brazil	285	403	346	400	350	350
China	1,091	1,551	2,341	1,656	1,800	1,800
Colombia	256	211	237	250	250	250
Iran	1,000	1,400	800	400	400	400
Israel	251	367	491	275	250	250
Japan	1,361	1,346	1,411	1,361	1,300	1,300
Jordan	528	514	432	500	500	500
Kuwait	254	252	283	200	250	250
Libya	166	296	582	350	200	200
Morocco	313	263	256	200	200	200
Russia	179	39	13	400	200	200
Saudi Arabia	8,000	7,700	7,200	6,000	7,200	7,200
Syria	900	1,050	250	200	500	500
Tunisia	378	229	336	450	200	200
Others	2,242	1,519	1,484	1,774	1,365	1,365
<b>Subtotal</b>	<b>17,470</b>	<b>17,304</b>	<b>16,468</b>	<b>14,691</b>	<b>15,215</b>	<b>15,465</b>
<b>Unaccounted</b>	<b>412</b>	<b>327</b>	<b>507</b>	<b>231</b>	<b>500</b>	<b>450</b>
<b>United States</b>	<b>712</b>	<b>572</b>	<b>302</b>	<b>148</b>	<b>200</b>	<b>200</b>
<b>World Total</b>	<b>18,594</b>	<b>18,203</b>	<b>17,277</b>	<b>15,070</b>	<b>15,915</b>	<b>16,115</b>

TY=Trade Year, see Endnotes.

**World Barley Production, Consumption, and Stocks**  
**Local Marketing Years, Thousand Metric Tons**

	2007/08	2008/09	2009/10	2010/11	2011/12 Nov	2011/12 Dec
<b>Production</b>						
Algeria	950	560	2,400	1,500	1,350	1,350
Argentina	1,600	2,110	1,356	2,950	3,300	3,300
Australia	7,160	7,997	7,865	8,145	8,200	8,500
Belarus	1,911	2,212	2,123	1,966	1,800	1,800
Canada	10,984	11,781	9,517	7,605	7,900	7,760
China	2,785	2,823	2,318	2,500	2,600	2,600
Ethiopia	1,355	1,484	1,569	1,400	1,400	1,400
EU-27	57,545	65,509	62,149	53,028	52,354	52,354
India	1,330	1,200	1,690	1,350	1,570	1,570
Iran	3,104	1,547	3,446	3,500	3,000	3,000
Kazakhstan	2,441	2,059	2,519	1,300	2,500	2,500
Morocco	763	1,272	3,800	2,570	2,400	2,340
Russia	15,663	23,148	17,881	8,350	16,500	16,500
Turkey	6,000	5,700	6,500	5,900	6,500	6,500
Ukraine	5,981	12,612	11,833	8,484	9,000	9,000
Others	9,103	7,988	9,002	9,054	9,386	9,426
<b>Subtotal</b>	128,675	150,002	145,968	119,602	129,760	129,900
<b>United States</b>	4,575	5,230	4,949	3,925	3,392	3,392
<b>World Total</b>	133,250	155,232	150,917	123,527	133,152	133,292
<b>Total Consumption</b>						
Algeria	1,100	1,100	1,350	1,500	1,700	1,700
Australia	3,100	4,000	4,500	4,700	4,800	4,700
Belarus	2,000	2,200	2,200	2,000	1,800	2,000
Canada	7,916	9,065	8,504	7,584	7,225	7,225
China	3,900	4,200	4,400	4,300	4,500	4,500
EU-27	54,200	57,000	56,500	56,400	52,000	52,000
India	1,000	1,000	1,500	1,350	1,500	1,500
Iran	3,600	3,550	3,700	3,700	3,600	3,600
Japan	1,600	1,550	1,550	1,550	1,525	1,525
Kazakhstan	1,700	1,850	2,000	1,235	2,025	2,025
Morocco	1,800	1,700	2,900	3,050	3,150	3,150
Russia	15,050	17,100	16,650	9,500	14,300	14,300
Saudi Arabia	7,430	7,425	7,425	6,625	7,225	7,225
Turkey	6,100	5,700	5,900	6,000	6,450	6,450
Ukraine	5,000	5,900	5,600	6,000	5,000	4,500
Others	14,699	15,172	15,307	15,166	15,188	15,188
<b>Subtotal</b>	129,952	139,148	140,237	131,071	132,338	131,938
<b>United States</b>	4,324	5,127	4,604	4,537	4,137	4,137
<b>World Total</b>	134,276	144,275	144,841	135,608	136,475	136,075
<b>Ending Stocks</b>						
Algeria	333	184	1,258	1,338	1,388	1,588
Australia	1,662	2,425	1,875	1,120	1,675	1,320
Canada	1,568	2,843	2,583	1,441	1,466	1,326
EU-27	5,705	10,916	15,532	7,460	5,414	5,414
Iran	725	622	1,268	1,468	1,268	1,268
Russia	1,153	3,813	2,395	1,386	1,986	1,586
Saudi Arabia	2,428	2,203	2,078	1,653	1,628	1,628
Others	5,359	6,437	7,947	7,559	6,867	7,257
<b>Subtotal</b>	18,933	29,443	34,936	23,425	21,692	21,387
<b>United States</b>	1,485	1,932	2,515	1,945	1,200	1,200
<b>World Total</b>	20,418	31,375	37,451	25,370	22,892	22,587

## Regional Barley Imports, Production, Consumption, and Stocks

Thousand Metric Tons

	2007/08	2008/09	2009/10	2010/11	Nov 2011/12	Dec 2011/12
<b>TY Imports</b>						
North America	933	737	373	251	300	300
South America	751	810	772	915	775	775
European Union	519	156	66	200	100	100
Other Europe	207	82	153	235	135	135
Former Soviet Union - 12	404	269	195	675	385	385
Middle East	11,506	11,681	10,046	7,995	9,500	9,500
North Africa	1,152	973	1,223	1,300	900	1,150
Sub-Saharan Africa	154	120	54	81	60	60
East Asia	2,550	3,000	3,861	3,142	3,225	3,225
South Asia	6	48	10	30	30	30
Oceania	0	0	17	15	5	5
<b>Total</b>	<b>18,182</b>	<b>17,876</b>	<b>16,770</b>	<b>14,839</b>	<b>15,415</b>	<b>15,665</b>
<b>Production</b>						
North America	16,212	17,822	14,966	12,311	12,073	11,933
South America	2,697	3,156	2,443	4,162	4,511	4,511
European Union	57,545	65,509	62,149	53,028	52,354	52,354
Other Europe	1,412	1,613	1,440	1,380	1,420	1,420
Former Soviet Union - 12	27,323	41,651	35,973	21,525	31,300	31,300
Middle East	11,030	8,004	11,320	11,370	11,270	11,270
North Africa	2,493	2,347	7,324	4,572	4,695	4,635
Sub-Saharan Africa	1,733	1,826	1,950	1,755	1,793	1,833
East Asia	3,240	3,300	2,757	2,922	3,034	3,034
South Asia	2,005	1,607	2,330	1,957	2,102	2,102
Oceania	7,560	8,397	8,265	8,545	8,600	8,900
<b>Total</b>	<b>133,250</b>	<b>155,232</b>	<b>150,917</b>	<b>123,527</b>	<b>133,152</b>	<b>133,292</b>
<b>Domestic Consumption</b>						
North America	13,040	15,042	13,858	12,871	12,162	12,162
South America	2,562	2,703	2,933	3,180	3,255	3,255
European Union	54,200	57,000	56,500	56,400	52,000	52,000
Other Europe	1,640	1,705	1,592	1,565	1,540	1,540
Former Soviet Union - 12	25,125	28,744	28,090	20,281	24,665	24,365
Middle East	20,777	20,556	20,403	19,738	20,781	20,781
North Africa	4,352	3,987	5,847	5,970	6,200	6,200
Sub-Saharan Africa	1,789	1,955	1,978	1,850	1,855	1,855
East Asia	5,854	6,109	6,326	6,230	6,405	6,405
South Asia	1,680	1,438	2,163	1,987	2,062	2,062
Oceania	3,500	4,400	4,900	5,125	5,200	5,100
<b>Total</b>	<b>134,519</b>	<b>143,639</b>	<b>144,590</b>	<b>135,197</b>	<b>136,125</b>	<b>135,725</b>
<b>Ending Stocks</b>						
North America	3,281	5,112	5,231	3,600	2,911	2,771
South America	460	766	601	870	770	601
European Union	5,705	10,916	15,532	7,460	5,414	5,414
Other Europe	279	279	238	272	277	277
Former Soviet Union - 12	2,631	5,701	4,449	3,094	3,682	3,839
Middle East	4,507	4,389	4,837	4,691	4,530	4,530
North Africa	818	511	2,963	2,747	2,282	2,422
Sub-Saharan Africa	214	204	233	224	201	257
East Asia	775	949	1,228	1,053	886	892
South Asia	50	87	224	206	226	226
Oceania	1,698	2,461	1,915	1,153	1,713	1,358
<b>Total</b>	<b>20,418</b>	<b>31,375</b>	<b>37,451</b>	<b>25,370</b>	<b>22,892</b>	<b>22,587</b>

NOTES: Regional definitions appear on last page of this circular. Imports are reported on a trade year basis. All other data are reported using local marketing years.

**World Sorghum Trade**  
**October/September Year, Thousand Metric Tons**

	2007/08	2008/09	2009/10	2010/11	2011/12 Nov	2011/12 Dec
<b>TY Exports</b>						
Argentina	1,172	907	1,507	1,866	2,300	2,300
Australia	340	1,360	350	700	1,000	1,200
China	223	32	41	50	50	50
India	91	54	124	50	50	50
Kenya	1	0	39	25	25	25
Nigeria	50	50	50	50	50	50
South Africa	21	48	48	20	25	20
Others	277	45	73	50	55	55
<b>Subtotal</b>	2,175	2,496	2,232	2,811	3,555	3,750
<b>United States</b>	6,664	3,598	4,074	3,794	2,400	1,900
<b>World Total</b>	8,839	6,094	6,306	6,605	5,955	5,650
<b>TY Imports</b>						
Chile	268	404	568	750	800	800
China	12	14	83	25	75	75
Colombia	66	202	212	300	300	300
Ethiopia	30	140	125	50	50	50
EU-27	5,267	66	7	800	50	50
Japan	1,084	1,629	1,649	1,418	1,600	1,600
Mexico	1,156	2,496	2,527	2,380	2,100	1,800
Morocco	9	4	144	100	100	100
Sudan	300	300	400	300	300	300
Taiwan	83	72	71	75	75	75
Others	784	430	526	382	320	325
<b>Subtotal</b>	9,059	5,757	6,312	6,580	5,770	5,475
<b>Unaccounted</b>	-221	334	-6	24	185	175
<b>United States</b>	1	3	0	1	0	0
<b>World Total</b>	8,839	6,094	6,306	6,605	5,955	5,650

TY=Trade Year, see Endnotes.



**World Sorghum Production, Consumption, and Stocks**  
**Local Marketing Years, Thousand Metric Tons**

	2007/08	2008/09	2009/10	2010/11	2011/12 Nov	2011/12 Dec
<b>Production</b>						
Argentina	2,937	1,660	3,629	4,400	4,700	4,700
Australia	3,790	2,692	1,508	2,068	2,200	2,400
Brazil	1,441	2,004	1,854	2,314	1,700	2,200
Burkina	1,507	1,875	1,522	1,950	1,800	1,800
China	1,920	1,837	1,677	1,800	1,850	1,850
Egypt	900	900	900	900	900	900
Ethiopia	2,659	2,619	2,084	3,200	2,700	2,700
EU-27	525	517	621	621	751	751
India	7,930	7,250	6,700	6,740	6,800	6,800
Mali	901	930	980	925	850	850
Mexico	6,200	7,067	6,250	7,350	6,600	6,600
Niger	930	1,214	739	1,200	900	900
Nigeria	10,000	11,000	11,500	11,700	11,500	11,500
Sudan	4,500	4,192	2,630	4,606	3,800	3,800
Tanzania	900	700	710	850	740	740
Others	6,233	6,393	6,154	6,848	6,909	6,804
<b>Subtotal</b>	<b>53,273</b>	<b>52,850</b>	<b>49,458</b>	<b>57,472</b>	<b>54,700</b>	<b>55,295</b>
<b>United States</b>	<b>12,636</b>	<b>11,998</b>	<b>9,728</b>	<b>8,773</b>	<b>6,246</b>	<b>6,246</b>
<b>World Total</b>	<b>65,909</b>	<b>64,848</b>	<b>59,186</b>	<b>66,245</b>	<b>60,946</b>	<b>61,541</b>
<b>Total Consumption</b>						
Argentina	1,200	1,100	1,900	2,100	2,300	2,300
Australia	2,205	1,805	1,205	1,305	1,405	1,405
Brazil	1,375	1,875	1,875	2,275	1,775	2,275
Burkina	1,507	1,700	1,697	1,800	1,800	1,800
China	2,000	2,000	1,900	1,800	1,900	1,900
Egypt	900	950	900	900	900	900
Ethiopia	2,600	2,700	2,400	3,000	2,800	2,800
EU-27	6,305	905	630	1,555	805	805
India	7,900	7,200	6,600	6,700	6,800	6,800
Japan	1,100	1,600	1,650	1,420	1,600	1,600
Mali	901	930	980	925	850	850
Mexico	7,200	8,600	9,700	9,400	9,100	8,800
Niger	1,000	1,200	900	1,200	1,000	1,000
Nigeria	9,950	10,950	11,450	11,650	11,450	11,450
Sudan	5,000	4,500	3,400	4,500	4,100	4,100
Others	8,248	8,221	8,219	9,031	9,230	9,145
<b>Subtotal</b>	<b>59,442</b>	<b>56,043</b>	<b>55,764</b>	<b>59,859</b>	<b>57,586</b>	<b>57,683</b>
<b>United States</b>	<b>5,081</b>	<b>8,319</b>	<b>5,859</b>	<b>5,306</b>	<b>3,937</b>	<b>4,445</b>
<b>World Total</b>	<b>64,523</b>	<b>64,362</b>	<b>61,623</b>	<b>65,165</b>	<b>61,523</b>	<b>62,128</b>
<b>Ending Stocks</b>						
Argentina	746	194	152	552	752	752
Australia	791	678	681	444	501	439
China	637	456	275	250	225	225
Ethiopia	179	238	47	297	247	247
Mexico	373	1,336	413	743	364	343
Nigeria	200	200	200	200	200	200
Sudan	697	684	309	710	705	705
Others	1,084	1,357	971	1,283	949	958
<b>Subtotal</b>	<b>4,707</b>	<b>5,143</b>	<b>3,048</b>	<b>4,479</b>	<b>3,943</b>	<b>3,869</b>
<b>United States</b>	<b>1,340</b>	<b>1,390</b>	<b>1,048</b>	<b>697</b>	<b>720</b>	<b>720</b>
<b>World Total</b>	<b>6,047</b>	<b>6,533</b>	<b>4,096</b>	<b>5,176</b>	<b>4,663</b>	<b>4,589</b>

## Regional Sorghum Imports, Production, Consumption, and Stocks

Thousand Metric Tons

	2007/08	2008/09	2009/10	2010/11	Nov 2011/12	Dec 2011/12
<b>TY Imports</b>						
North America	1,157	2,499	2,527	2,381	2,100	1,800
South America	432	665	848	1,085	1,165	1,165
European Union	5,267	66	7	800	50	50
Other Europe	142	0	17	25	20	20
Middle East	156	81	48	132	55	55
North Africa	11	45	166	105	105	105
Sub-Saharan Africa	663	667	842	515	510	515
East Asia	1,196	1,719	1,806	1,523	1,755	1,755
Southeast Asia	31	14	16	10	10	10
Others	5	4	35	5	0	0
<b>Total</b>	<b>9,060</b>	<b>5,760</b>	<b>6,312</b>	<b>6,581</b>	<b>5,770</b>	<b>5,475</b>
<b>Production</b>						
North America	18,836	19,065	15,978	16,123	12,846	12,846
Central America	396	298	326	329	329	329
Caribbean	128	128	128	128	128	128
South America	5,102	4,719	6,153	7,646	7,222	7,722
European Union	525	517	621	621	751	751
Middle East	859	654	602	640	640	640
North Africa	915	915	915	915	915	915
Sub-Saharan Africa	25,280	26,553	24,359	29,020	27,050	26,945
East Asia	1,940	1,857	1,697	1,820	1,870	1,870
South Asia	8,081	7,395	6,845	6,885	6,945	6,945
Southeast Asia	57	55	54	50	50	50
Oceania	3,790	2,692	1,508	2,068	2,200	2,400
Others	0	0	0	0	0	0
<b>Total</b>	<b>65,909</b>	<b>64,848</b>	<b>59,186</b>	<b>66,245</b>	<b>60,946</b>	<b>61,541</b>
<b>Domestic Consumption</b>						
North America	12,281	16,919	15,559	14,706	13,037	13,245
Central America	375	315	325	325	325	325
Caribbean	128	128	128	128	128	128
South America	3,793	4,766	5,318	6,269	6,052	6,552
European Union	6,305	905	630	1,555	805	805
Middle East	970	749	694	777	700	700
North Africa	924	965	1,012	1,040	1,015	1,015
Sub-Saharan Africa	26,013	26,891	25,909	28,527	27,680	27,595
East Asia	3,222	3,699	3,643	3,320	3,600	3,600
South Asia	8,053	7,349	6,780	6,845	6,945	6,945
Southeast Asia	61	64	45	45	40	40
Oceania	2,205	1,805	1,205	1,305	1,405	1,405
Others	142	0	17	25	20	20
<b>Total</b>	<b>64,472</b>	<b>64,555</b>	<b>61,265</b>	<b>64,867</b>	<b>61,752</b>	<b>62,375</b>
<b>Ending Stocks</b>						
North America	1,713	2,726	1,461	1,440	1,084	1,063
Central America	45	27	28	32	31	31
South America	880	491	394	868	968	988
European Union	71	34	24	24	15	15
Middle East	76	62	18	13	8	8
North Africa	41	29	43	43	43	43
Sub-Saharan Africa	1,514	1,727	896	1,798	1,573	1,563
East Asia	733	578	397	370	346	345
South Asia	183	181	154	144	94	94
Oceania	791	678	681	444	501	439
Others	0	0	0	0	0	0
<b>Total</b>	<b>6,047</b>	<b>6,533</b>	<b>4,096</b>	<b>5,176</b>	<b>4,663</b>	<b>4,589</b>

NOTES: Regional definitions appear on last page of this circular. Imports are reported on a trade year basis. All other data are reported using local marketing years.

**World Oats Trade**  
**October/September Year, Thousand Metric Tons**

	2007/08	2008/09	2009/10	2010/11	2011/12 Nov	2011/12 Dec
<b>TY Exports</b>						
Argentina	1	5	1	5	5	5
Australia	174	161	211	200	200	200
Brazil	4	9	4	5	5	5
Canada	2,321	1,792	1,539	1,350	1,450	1,500
Chile	17	31	37	125	75	75
EU-27	133	103	216	150	150	150
Russia	7	2	4	1	5	5
Others	33	6	19	15	5	5
<b>Subtotal</b>	2,690	2,109	2,031	1,851	1,895	1,945
<b>United States</b>	53	38	38	45	45	45
<b>World Total</b>	2,743	2,147	2,069	1,896	1,940	1,990
<b>TY Imports</b>						
Argentina	1	2	2	5	5	5
Bosnia and Herzegovina	3	2	3	5	5	5
Canada	17	14	21	18	15	15
China	13	39	57	50	50	50
Colombia	14	2	2	5	5	5
Ecuador	15	14	11	10	10	10
EU-27	2	4	2	5	5	5
Japan	68	46	56	60	60	60
Mexico	131	82	46	103	75	75
Norway	47	8	34	10	15	15
South Africa	18	33	21	25	25	25
Switzerland	56	52	49	50	50	50
Turkey	11	6	0	5	5	5
Uruguay	0	11	4	5	5	5
Others	12	3	2	5	0	0
<b>Subtotal</b>	408	318	310	361	330	330
<b>Unaccounted</b>	91	42	152	67	110	160
<b>United States</b>	2,244	1,787	1,607	1,468	1,500	1,500
<b>World Total</b>	2,743	2,147	2,069	1,896	1,940	1,990

TY=Trade Year, see Endnotes.

**World Oats Production, Consumption, and Stocks**  
**Local Marketing Years, Thousand Metric Tons**

	2007/08	2008/09	2009/10	2010/11	2011/12 Nov	2011/12 Dec
<b>Production</b>						
Algeria	80	80	140	140	140	140
Argentina	472	291	182	600	345	345
Australia	1,502	1,160	1,162	1,141	1,600	1,650
Belarus	580	605	552	442	800	800
Brazil	238	239	253	379	370	370
Canada	4,696	4,273	2,906	2,480	2,900	3,000
Chile	384	344	381	564	500	500
China	350	300	410	420	420	420
EU-27	8,634	8,935	8,579	7,370	8,013	8,013
Kazakhstan	230	138	204	160	160	160
Norway	276	328	245	245	245	245
Russia	5,384	5,835	5,401	3,218	5,000	5,000
Serbia	120	120	120	120	120	120
Turkey	189	196	218	210	210	210
Ukraine	544	944	731	458	550	550
Others	462	485	485	466	503	470
<b>Subtotal</b>	<b>24,141</b>	<b>24,273</b>	<b>21,969</b>	<b>18,413</b>	<b>21,876</b>	<b>21,993</b>
<b>United States</b>	<b>1,313</b>	<b>1,294</b>	<b>1,351</b>	<b>1,178</b>	<b>779</b>	<b>779</b>
<b>World Total</b>	<b>25,454</b>	<b>25,567</b>	<b>23,320</b>	<b>19,591</b>	<b>22,655</b>	<b>22,772</b>
<b>Total Consumption</b>						
Algeria	86	80	140	141	140	140
Argentina	450	300	200	600	350	350
Australia	1,335	1,035	975	900	1,350	1,350
Belarus	575	600	575	475	825	775
Brazil	240	225	250	370	360	360
Canada	1,935	1,766	1,753	1,525	1,500	1,400
Chile	350	325	350	450	450	450
China	375	350	450	450	500	500
EU-27	8,650	8,500	8,100	7,800	7,800	7,800
Kazakhstan	215	135	210	150	160	160
Mexico	235	210	215	185	220	190
Norway	340	320	285	255	265	265
Russia	5,300	5,600	5,500	3,450	4,900	4,900
Turkey	200	210	215	215	215	215
Ukraine	550	925	725	475	550	550
Others	626	608	622	638	638	638
<b>Subtotal</b>	<b>21,785</b>	<b>21,213</b>	<b>20,634</b>	<b>18,098</b>	<b>20,306</b>	<b>20,140</b>
<b>United States</b>	<b>3,161</b>	<b>2,968</b>	<b>3,011</b>	<b>2,789</b>	<b>2,654</b>	<b>2,668</b>
<b>World Total</b>	<b>24,946</b>	<b>24,181</b>	<b>23,645</b>	<b>20,887</b>	<b>22,960</b>	<b>22,808</b>
<b>Ending Stocks</b>						
Argentina	100	89	70	70	65	65
Australia	183	147	126	167	244	267
Belarus	69	74	51	18	50	43
Canada	950	1,527	1,170	769	734	834
China	77	66	83	103	73	73
EU-27	625	972	1,224	687	755	755
Russia	266	499	397	160	255	255
Others	168	198	181	216	164	158
<b>Subtotal</b>	<b>2,438</b>	<b>3,572</b>	<b>3,302</b>	<b>2,190</b>	<b>2,340</b>	<b>2,450</b>
<b>United States</b>	<b>969</b>	<b>1,221</b>	<b>1,166</b>	<b>982</b>	<b>614</b>	<b>686</b>
<b>World Total</b>	<b>3,407</b>	<b>4,793</b>	<b>4,468</b>	<b>3,172</b>	<b>2,954</b>	<b>3,136</b>

## Regional Oats Imports, Production, Consumption, and Stocks

Thousand Metric Tons

	2007/08	2008/09	2009/10	2010/11	Nov 2011/12	Dec 2011/12
<b>TY Imports</b>						
North America	2,392	1,883	1,674	1,589	1,590	1,590
South America	30	32	19	25	25	25
European Union	2	4	2	5	5	5
Other Europe	108	62	87	70	70	70
Former Soviet Union - 12	7	0	0	0	0	0
Middle East	11	6	0	5	5	5
North Africa	1	0	1	0	0	0
Sub-Saharan Africa	18	33	21	25	25	25
East Asia	81	85	113	110	110	110
Oceania	2	0	0	0	0	0
<b>Total</b>	<b>2,652</b>	<b>2,105</b>	<b>1,917</b>	<b>1,829</b>	<b>1,830</b>	<b>1,830</b>
<b>Production</b>						
North America	6,134	5,715	4,387	3,769	3,827	3,894
South America	1,117	897	857	1,584	1,256	1,256
European Union	8,634	8,935	8,579	7,370	8,013	8,013
Other Europe	553	605	522	522	522	522
Former Soviet Union - 12	6,743	7,527	6,893	4,283	6,515	6,515
Middle East	189	196	218	210	210	210
North Africa	110	110	170	170	170	170
Sub-Saharan Africa	45	45	45	45	45	45
East Asia	352	302	412	422	422	422
Oceania	1,577	1,235	1,237	1,216	1,675	1,725
<b>Total</b>	<b>25,454</b>	<b>25,567</b>	<b>23,320</b>	<b>19,591</b>	<b>22,655</b>	<b>22,772</b>
<b>Domestic Consumption</b>						
North America	5,331	4,944	4,979	4,499	4,374	4,258
South America	1,091	896	857	1,481	1,221	1,221
European Union	8,650	8,500	8,100	7,800	7,800	7,800
Other Europe	680	647	620	592	597	597
Former Soviet Union - 12	6,645	7,265	7,015	4,555	6,440	6,390
Middle East	200	210	215	215	215	215
North Africa	116	110	170	171	170	170
Sub-Saharan Africa	55	75	65	70	70	70
East Asia	445	400	505	510	565	565
Oceania	1,410	1,110	1,050	975	1,425	1,425
<b>Total</b>	<b>24,623</b>	<b>24,157</b>	<b>23,576</b>	<b>20,868</b>	<b>22,877</b>	<b>22,711</b>
<b>Ending Stocks</b>						
North America	1,928	2,756	2,343	1,756	1,359	1,525
South America	126	113	95	152	102	102
European Union	625	972	1,224	687	755	755
Other Europe	34	53	45	45	40	40
Former Soviet Union - 12	404	658	517	225	347	340
Middle East	5	2	5	5	5	5
North Africa	1	1	1	1	1	1
Sub-Saharan Africa	20	23	24	24	24	24
East Asia	81	68	88	110	77	77
Oceania	183	147	126	167	244	267
<b>Total</b>	<b>3,407</b>	<b>4,793</b>	<b>4,468</b>	<b>3,172</b>	<b>2,954</b>	<b>3,136</b>

NOTES: Regional definitions appear on last page of this circular. Imports are reported on a trade year basis. All other data are reported using local marketing years.

**World Rye Trade**  
**October/September Year, Thousand Metric Tons**

	2007/08	2008/09	2009/10	2010/11	2011/12 Nov	2011/12 Dec
<b>TY Exports</b>						
Belarus	75	50	25	100	75	75
Canada	167	76	142	175	100	100
EU-27	59	114	136	75	100	100
Russia	86	14	11	10	10	10
Ukraine	0	6	93	5	0	5
Others	3	0	0	0	0	0
<b>Subtotal</b>	390	260	407	365	285	290
<b>United States</b>	8	6	4	3	5	5
<b>World Total</b>	398	266	411	368	290	295
<b>TY Imports</b>						
Croatia	2	2	2	1	1	1
EU-27	88	8	6	15	10	10
Israel	7	11	9	10	10	10
Japan	83	57	103	101	75	75
Korea, South	6	7	7	5	5	5
Norway	11	11	14	10	10	10
Switzerland	4	4	6	5	5	5
Turkey	14	6	0	5	5	5
Others	0	3	2	100	0	0
<b>Subtotal</b>	215	109	149	252	121	121
<b>Unaccounted</b>	31	49	133	-32	44	49
<b>United States</b>	152	108	129	148	125	125
<b>World Total</b>	398	266	411	368	290	295

TY=Trade Year, see Endnotes.

**World Rye Production, Consumption, and Stocks**  
**Local Marketing Years, Thousand Metric Tons**

	2007/08	2008/09	2009/10	2010/11	2011/12 Nov	2011/12 Dec
<b>Production</b>						
Argentina	77	55	55	40	50	50
Belarus	1,305	1,492	1,227	735	1,500	1,500
Canada	252	316	280	232	202	195
EU-27	7,679	9,262	9,952	7,796	6,884	6,884
Russia	3,909	4,505	4,333	1,642	3,000	3,000
Turkey	241	247	343	270	270	270
Ukraine	562	1,051	954	464	550	550
Others	209	190	202	176	176	176
<b>Subtotal</b>	14,234	17,118	17,346	11,355	12,632	12,625
<b>United States</b>	160	203	178	189	161	161
<b>World Total</b>	14,394	17,321	17,524	11,544	12,793	12,786
<b>Total Consumption</b>						
Argentina	77	55	55	40	50	50
Belarus	1,200	1,400	1,300	700	1,400	1,300
Canada	143	152	140	139	100	100
EU-27	7,300	8,750	9,550	8,200	7,300	7,300
Japan	90	65	90	100	75	75
Kazakhstan	65	40	75	50	50	50
Norway	61	59	40	37	37	37
Russia	3,750	4,400	4,325	1,900	3,000	2,800
Turkey	250	275	340	265	270	270
Ukraine	550	800	800	650	600	600
Others	122	127	124	120	120	120
<b>Subtotal</b>	13,663	16,181	16,909	12,241	13,031	12,749
<b>United States</b>	335	292	273	330	293	280
<b>World Total</b>	13,998	16,473	17,182	12,571	13,324	13,029
<b>Ending Stocks</b>						
Belarus	200	242	144	79	218	204
Canada	35	123	139	41	43	36
EU-27	1,017	1,424	1,727	1,236	730	730
Japan	13	5	18	19	19	19
Russia	223	312	308	150	215	340
Turkey	34	14	17	27	32	32
Ukraine	68	313	411	189	127	134
Others	5	7	7	7	7	7
<b>Subtotal</b>	1,595	2,440	2,771	1,748	1,391	1,502
<b>United States</b>	10	13	24	20	23	23
<b>World Total</b>	1,605	2,453	2,795	1,768	1,414	1,525

## Regional Rye Imports, Production, Consumption, and Stocks

Thousand Metric Tons

	2007/08	2008/09	2009/10	2010/11	Nov 2011/12	Dec 2011/12
<b>TY Imports</b>						
North America	152	108	129	148	125	125
South America	0	0	0	0	0	0
European Union	88	8	6	15	10	10
Other Europe	17	18	22	16	16	16
Former Soviet Union - 12	0	2	2	100	0	0
Middle East	21	17	9	15	15	15
Sub-Saharan Africa	0	0	0	0	0	0
East Asia	89	64	110	106	80	80
Oceania	0	0	0	0	0	0
<b>Total</b>	<b>367</b>	<b>217</b>	<b>278</b>	<b>400</b>	<b>246</b>	<b>246</b>
<b>Production</b>						
North America	412	519	458	421	363	356
South America	84	63	61	45	55	55
European Union	7,679	9,262	9,952	7,796	6,884	6,884
Other Europe	111	119	98	98	98	98
Former Soviet Union - 12	5,844	7,088	6,589	2,891	5,100	5,100
Middle East	241	247	343	270	270	270
Sub-Saharan Africa	3	3	3	3	3	3
East Asia	0	0	0	0	0	0
Oceania	20	20	20	20	20	20
<b>Total</b>	<b>14,394</b>	<b>17,321</b>	<b>17,524</b>	<b>11,544</b>	<b>12,793</b>	<b>12,786</b>
<b>Domestic Consumption</b>						
North America	478	444	413	469	393	380
South America	84	63	61	45	55	55
European Union	7,300	8,750	9,550	8,200	7,300	7,300
Other Europe	140	137	119	114	114	114
Former Soviet Union - 12	5,565	6,640	6,500	3,300	5,050	4,750
Middle East	257	286	349	275	280	280
Sub-Saharan Africa	3	3	3	3	3	3
East Asia	96	72	97	105	80	80
Oceania	20	20	20	20	20	20
<b>Total</b>	<b>13,943</b>	<b>16,415</b>	<b>17,112</b>	<b>12,531</b>	<b>13,295</b>	<b>12,982</b>
<b>Ending Stocks</b>						
North America	45	136	163	61	66	59
South America	0	0	0	0	0	0
European Union	1,017	1,424	1,727	1,236	730	730
Other Europe	1	1	1	1	1	1
Former Soviet Union - 12	495	873	869	424	566	684
Middle East	34	14	17	27	32	32
Sub-Saharan Africa	0	0	0	0	0	0
East Asia	13	5	18	19	19	19
Oceania	0	0	0	0	0	0
<b>Total</b>	<b>1,605</b>	<b>2,453</b>	<b>2,795</b>	<b>1,768</b>	<b>1,414</b>	<b>1,525</b>

NOTES: Regional definitions appear on last page of this circular. Imports are reported on a trade year basis. All other data are reported using local marketing years.





# HISTORICAL DATA SERIES FOR SELECTED REGIONS AND COUNTRIES

---

## CONTENTS

European Union: Grain Supply and Demand.....	34
China: Grain Supply and Demand.....	35
Other Europe: Grain Supply and Demand .....	36
Former Soviet Union: Grain Supply and Demand .....	37
Wheat Supply and Disappearance: Selected Exporters .....	41
Corn Supply and Disappearance: Selected Exporters .....	43
Barley Supply and Disappearance: Selected Exporters.....	45
Sorghum Supply and Disappearance: Selected Exporters.....	46
U.S. Grains: Supply and Distribution .....	47
Total Wheat and Coarse Grains: Supply and Demand.....	48
World Wheat and Coarse Grains: Supply and Demand .....	49
World Corn and Barley: Supply and Demand .....	50
World Rice: Supply and Demand.....	51

**European Union: Grain Supply and Demand**

**Wheat and Coarse Grains Millions of Metric Tons/Hectares**

	<b>Area Harvested</b>	<b>Yield</b>	<b>Production</b>	<b>Imports</b>	<b>Exports</b>	<b>Feed Dom. Consumpti</b>	<b>Domestic Consumpti</b>	<b>Ending Stocks</b>
<b>Wheat</b>								
2000/01	26.5	5.0	131.7	3.5	15.7	56.3	118.4	17.5
2001/02	25.9	4.8	123.4	8.7	12.8	56.5	118.5	18.3
2002/03	26.4	5.0	132.6	10.7	18.1	60.0	125.0	18.5
2003/04	24.3	4.5	110.6	7.4	9.8	52.4	115.1	11.5
2004/05	26.0	5.7	146.9	7.1	14.7	59.2	123.2	27.5
2005/06	25.8	5.1	132.4	6.8	15.7	63.0	127.5	23.4
2006/07	24.5	5.1	124.9	5.2	13.8	60.2	125.5	14.2
2007/08	24.7	4.9	120.1	6.9	12.3	52.4	116.5	12.4
2008/09	26.7	5.7	151.1	7.7	25.4	60.5	127.0	18.9
2009/10	25.8	5.4	138.8	5.5	22.1	57.5	125.0	16.2
2010/11	26.1	5.2	135.7	4.7	22.9	52.5	122.0	11.7
2011/12	25.8	5.3	137.5	7.5	17.0	56.5	127.0	12.7
<b>Coarse Grains</b>								
2000/01	33.2	4.2	140.3	4.1	9.3	105.5	139.7	18.4
2001/02	33.7	4.5	150.5	3.9	6.7	108.1	143.8	22.4
2002/03	32.8	4.5	148.4	4.4	7.6	109.5	145.0	22.6
2003/04	32.7	4.0	131.8	8.2	4.2	109.7	145.3	13.1
2004/05	33.4	5.0	166.7	3.0	4.9	116.6	152.6	25.3
2005/06	32.7	4.5	146.8	2.8	4.4	110.0	148.1	22.4
2006/07	32.0	4.3	137.9	8.1	4.7	110.9	148.4	15.3
2007/08	32.2	4.2	136.6	20.3	4.6	119.6	154.9	12.7
2008/09	33.6	4.8	162.1	3.4	5.6	114.0	151.9	20.8
2009/10	32.5	4.8	155.0	3.0	3.0	112.6	150.1	25.9
2010/11	30.2	4.6	139.5	8.4	6.1	114.1	152.0	15.7
2011/12	30.2	4.9	146.7	3.2	4.8	109.4	147.6	13.2
<b>Wheat and Coarse Grains</b>								
2000/01	59.7	4.6	272.0	7.6	24.9	161.8	258.0	35.9
2001/02	59.6	4.6	273.9	12.7	19.4	164.6	262.3	40.7
2002/03	59.2	4.7	281.0	15.0	25.7	169.5	270.0	41.1
2003/04	57.0	4.2	242.4	15.6	14.0	162.1	260.4	24.7
2004/05	59.4	5.3	313.6	10.1	19.6	175.8	275.9	52.8
2005/06	58.5	4.8	279.1	9.6	20.1	173.0	275.6	45.8
2006/07	56.4	4.7	262.8	13.3	18.5	171.1	273.9	29.5
2007/08	56.9	4.5	256.7	27.2	16.9	172.0	271.4	25.2
2008/09	60.2	5.2	313.2	11.2	30.9	174.5	278.9	39.8
2009/10	58.3	5.0	293.9	8.6	25.1	170.1	275.1	42.0
2010/11	56.3	4.9	275.1	13.1	28.9	166.6	274.0	27.4
2011/12	56.0	5.1	284.2	10.7	21.8	165.9	274.6	25.9

**China: Grain Supply and Demand**

**Wheat and Coarse Grains Millions of Metric Tons/Hectares**

	<b>Area Harvested</b>	<b>Yield</b>	<b>Production</b>	<b>Imports</b>	<b>Exports</b>	<b>Feed Dom. Consumpti</b>	<b>Domestic Consumpti</b>	<b>Ending Stocks</b>
<b>Wheat</b>								
2000/01	26.7	3.7	99.6	0.2	0.6	10.0	110.3	91.9
2001/02	24.6	3.8	93.9	1.1	1.5	9.0	108.7	76.6
2002/03	23.9	3.8	90.3	0.4	1.7	6.5	105.2	60.4
2003/04	22.0	3.9	86.5	3.7	2.8	6.0	104.5	43.3
2004/05	21.6	4.3	92.0	6.7	1.2	4.0	102.0	38.8
2005/06	22.8	4.3	97.4	1.1	1.4	3.5	101.5	34.5
2006/07	23.6	4.6	108.5	0.4	2.8	4.0	102.0	38.6
2007/08	23.7	4.6	109.3	0.0	2.8	8.0	106.0	39.1
2008/09	23.6	4.8	112.5	0.5	0.7	8.0	105.5	45.8
2009/10	24.3	4.7	115.1	1.4	0.9	10.0	107.0	54.4
2010/11	24.3	4.7	115.2	0.9	0.9	13.0	109.5	60.1
2011/12	24.2	4.9	117.9	1.5	1.0	17.5	113.5	65.0
<b>Coarse Grains</b>								
2000/01	26.5	4.3	114.0	2.4	7.3	94.4	130.4	102.8
2001/02	27.3	4.5	122.4	2.0	8.6	96.3	133.0	85.6
2002/03	27.8	4.7	130.6	1.8	15.3	98.4	136.3	66.5
2003/04	26.8	4.6	124.0	1.5	7.7	99.1	138.3	45.9
2004/05	28.0	4.9	138.3	2.1	7.6	100.3	141.1	37.6
2005/06	28.8	5.1	147.8	2.3	3.8	103.4	147.2	36.7
2006/07	30.9	5.1	159.1	1.2	5.5	104.6	153.5	38.0
2007/08	31.8	5.0	158.9	1.2	0.9	106.3	157.8	39.4
2008/09	32.2	5.4	172.4	1.7	0.2	108.3	161.1	52.2
2009/10	33.4	5.1	169.6	3.8	0.2	118.4	173.0	52.4
2010/11	34.8	5.3	183.4	2.7	0.2	124.3	184.0	54.3
2011/12	35.7	5.5	198.1	4.9	0.3	134.4	199.3	57.7
<b>Wheat and Coarse Grains</b>								
2000/01	53.1	4.0	213.6	2.6	7.9	104.4	240.7	194.7
2001/02	52.0	4.2	216.3	3.1	10.1	105.3	241.7	162.2
2002/03	51.7	4.3	220.9	2.2	17.1	104.9	241.5	126.8
2003/04	48.8	4.3	210.5	5.3	10.5	105.1	242.8	89.2
2004/05	49.6	4.6	230.2	8.8	8.8	104.3	243.1	76.4
2005/06	51.6	4.7	245.2	3.4	5.2	106.9	248.7	71.2
2006/07	54.5	4.9	267.6	1.5	8.2	108.6	255.5	76.6
2007/08	55.5	4.8	268.2	1.2	3.7	114.3	263.8	78.5
2008/09	55.8	5.1	284.9	2.1	0.9	116.3	266.6	98.0
2009/10	57.7	4.9	284.7	5.2	1.1	128.4	280.0	106.8
2010/11	59.1	5.1	298.6	3.6	1.1	137.3	293.5	114.4
2011/12	59.9	5.3	316.0	6.4	1.3	151.9	312.8	122.7

**Other Europe: Grain Supply and Demand**

**Wheat and Coarse Grains Millions of Metric Tons/Hectares**

	<b>Area Harvested</b>	<b>Yield</b>	<b>Production</b>	<b>Imports</b>	<b>Exports</b>	<b>Feed Dom. Consumpti</b>	<b>Domestic Consumpti</b>	<b>Ending Stocks</b>
<b>Wheat</b>								
2000/01	1.4	3.3	4.6	1.2	0.3	0.7	5.5	1.4
2001/02	1.4	3.4	4.9	1.8	0.6	0.9	5.9	1.5
2002/03	1.4	3.5	4.9	1.4	0.6	0.9	5.6	1.5
2003/04	1.2	3.1	3.9	1.5	0.1	0.7	5.4	1.3
2004/05	1.4	4.0	5.4	1.5	0.3	1.0	5.9	2.0
2005/06	1.1	3.7	4.2	1.5	0.2	0.9	5.8	1.8
2006/07	1.2	3.6	4.3	1.5	0.6	0.7	5.3	1.7
2007/08	1.2	3.7	4.4	1.9	0.8	0.8	5.5	1.8
2008/09	1.1	4.2	4.7	1.7	0.5	1.0	5.6	2.2
2009/10	1.2	3.8	4.6	1.7	0.8	0.8	5.5	2.2
2010/11	1.1	3.6	3.8	1.6	0.8	0.7	5.3	1.5
2011/12	1.1	4.0	4.4	1.7	0.6	0.8	5.5	1.6
<b>Coarse Grains</b>								
2000/01	2.6	3.1	8.1	1.0	0.0	7.7	9.0	1.0
2001/02	2.7	4.1	10.9	0.8	0.2	9.8	11.1	1.4
2002/03	2.7	4.4	11.7	0.6	0.6	9.9	11.4	1.8
2003/04	2.7	3.5	9.2	0.8	0.1	9.5	10.8	1.1
2004/05	2.7	4.8	12.8	0.6	0.6	10.8	12.2	1.6
2005/06	2.7	4.8	12.7	0.7	1.4	10.7	12.0	1.5
2006/07	2.5	4.6	11.6	0.9	0.9	10.2	11.5	1.5
2007/08	2.6	3.6	9.4	1.0	0.1	9.1	10.4	1.3
2008/09	2.7	4.6	12.4	0.6	1.9	9.6	10.9	1.5
2009/10	2.4	4.8	11.8	0.7	1.7	9.3	10.8	1.7
2010/11	2.5	4.9	12.2	0.9	2.2	9.3	10.9	1.7
2011/12	2.5	4.6	11.6	0.7	1.7	9.3	10.8	1.4
<b>Wheat and Coarse Grains</b>								
2000/01	4.0	3.2	12.7	2.2	0.3	8.4	14.5	2.3
2001/02	4.1	3.9	15.8	2.6	0.8	10.7	17.0	2.9
2002/03	4.1	4.1	16.6	2.0	1.2	10.7	17.0	3.3
2003/04	3.9	3.4	13.1	2.3	0.2	10.2	16.2	2.4
2004/05	4.0	4.5	18.2	2.1	0.9	11.8	18.1	3.7
2005/06	3.8	4.4	16.9	2.1	1.6	11.5	17.8	3.3
2006/07	3.7	4.3	15.9	2.4	1.5	10.9	16.8	3.3
2007/08	3.8	3.6	13.8	2.9	0.9	10.0	15.9	3.2
2008/09	3.8	4.5	17.1	2.3	2.4	10.5	16.5	3.7
2009/10	3.7	4.5	16.4	2.4	2.5	10.1	16.2	3.8
2010/11	3.6	4.5	16.0	2.5	3.0	10.0	16.2	3.2
2011/12	3.6	4.4	16.0	2.5	2.3	10.1	16.3	3.0

**Former Soviet Union: Grain Supply and Demand**

**Wheat and Coarse Grains Millions of Metric Tons/Hectares**

	<b>Area Harvested</b>	<b>Yield</b>	<b>Production</b>	<b>Imports</b>	<b>Exports</b>	<b>Feed Dom. Consumpti</b>	<b>Domestic Consumpti</b>	<b>Ending Stocks</b>
<b>Wheat</b>								
2005/06	49.2	1.8	90.7	5.6	21.1	23.5	75.0	17.0
2006/07	45.8	1.8	84.7	6.0	22.6	21.6	72.5	12.6
2007/08	47.4	1.9	92.4	6.0	21.9	23.9	75.4	13.8
2008/09	51.7	2.2	115.5	6.6	37.8	24.4	76.0	22.1
2009/10	55.0	2.1	114.1	5.4	36.7	25.9	78.0	26.9
2010/11	52.0	1.6	81.4	5.5	14.1	23.9	75.7	23.8
2011/12	50.6	2.2	112.4	6.2	34.7	27.4	79.8	28.0
<b>Coarse Grains</b>								
2005/06	28.3	2.0	55.7	1.1	8.6	34.5	50.5	5.2
2006/07	30.0	2.0	59.1	1.0	8.5	35.8	51.4	5.4
2007/08	29.6	1.8	54.2	1.0	5.3	35.0	50.6	4.8
2008/09	30.9	2.6	79.0	0.7	17.1	41.7	58.3	9.1
2009/10	29.6	2.3	67.6	0.4	15.0	39.0	54.9	7.2
2010/11	26.2	1.8	47.3	1.2	8.7	28.5	41.6	5.5
2011/12	28.4	2.7	75.3	0.6	19.5	37.9	53.4	8.5

## Former Soviet Union: Grain Supply and Demand (Wheat)

Millions of Tons/Hectares

Country Mktg Year	Area Harvested	Yield	Production	MY Imports	MY Exports	Feed and Residual	Total Consumpti	Ending Stocks
<b>Former Soviet Union - 12</b>								
<b>Kazakhstan</b>								
2008/09	13.5	0.9	12.5	0.1	5.7	2.6	7.5	3.4
2009/10	14.8	1.2	17.1	0.1	7.9	2.9	7.8	4.8
2010/11	14.5	0.7	9.7	0.0	5.5	2.0	6.7	2.3
2011/12	13.8	1.5	21.0	0.0	8.5	4.0	8.9	5.9
<b>Russia</b>								
2008/09	26.6	2.4	63.8	0.2	18.4	16.2	38.9	10.7
2009/10	28.7	2.2	61.8	0.2	18.6	16.8	39.6	14.5
2010/11	26.6	1.6	41.5	0.1	4.0	16.0	38.6	13.5
2011/12	25.7	2.2	56.0	0.2	19.0	16.0	38.6	12.1
<b>Ukraine</b>								
2008/09	7.1	3.7	25.9	0.1	13.0	2.9	11.9	3.1
2009/10	6.8	3.1	20.9	0.0	9.3	3.3	12.3	2.4
2010/11	6.3	2.7	16.8	0.0	4.3	2.8	11.6	3.3
2011/12	6.7	3.3	22.0	0.1	7.0	4.2	13.0	5.4
<b>Uzbekistan</b>								
2008/09	1.4	4.4	6.0	1.4	0.2	1.3	7.1	0.9
2009/10	1.4	4.4	6.2	1.7	0.4	1.4	7.5	0.9
2010/11	1.4	4.6	6.5	1.6	0.1	1.5	7.9	1.0
2011/12	1.4	4.5	6.3	1.7	0.1	1.5	8.0	0.9
<b>Other Former Soviet Union - 12</b>								
2008/09	3.1	2.3	7.3	4.7	0.4	1.4	10.6	4.0
2009/10	3.4	2.4	8.2	3.5	0.5	1.5	10.8	4.3
2010/11	3.3	2.1	6.8	3.7	0.2	1.6	10.9	3.6
2011/12	3.0	2.4	7.1	4.2	0.1	1.7	11.3	3.6
<b>Total Former Soviet Union - 12</b>								
2008/09	51.7	2.2	115.5	6.6	37.8	24.4	76.0	22.1
2009/10	55.0	2.1	114.1	5.4	36.7	25.9	78.0	26.9
2010/11	52.0	1.6	81.4	5.5	14.1	23.9	75.7	23.8
2011/12	50.6	2.2	112.4	6.2	34.7	27.4	79.8	28.0

## Former Soviet Union: Grain Supply and Demand (Barley)

Millions of Tons/Hectares

Country Mktg Year	Area Harvested	Yield	Production	MY Imports	MY Exports	Feed and Residual	Total Consumpti	Ending Stocks
<b>Former Soviet Union - 12</b>								
<b>Kazakhstan</b>								
2008/09	2.1	1.0	2.1	0.1	0.3	1.6	1.9	0.3
2009/10	1.8	1.4	2.5	0.0	0.4	1.7	2.0	0.5
2010/11	1.6	0.8	1.3	0.1	0.2	0.9	1.2	0.4
2011/12	1.6	1.6	2.5	0.0	0.3	1.7	2.0	0.6
<b>Russia</b>								
2008/09	9.7	2.4	23.1	0.1	3.4	12.3	17.1	3.8
2009/10	9.1	2.0	17.9	0.0	2.7	12.2	16.7	2.4
2010/11	7.2	1.2	8.4	0.4	0.3	5.5	9.5	1.4
2011/12	8.0	2.1	16.5	0.2	2.2	9.8	14.3	1.6
<b>Ukraine</b>								
2008/09	4.2	3.0	12.6	0.0	6.4	4.3	5.9	1.1
2009/10	5.0	2.4	11.8	0.0	6.2	3.9	5.6	1.1
2010/11	4.3	2.0	8.5	0.0	2.8	4.4	6.0	0.8
2011/12	3.7	2.4	9.0	0.0	4.1	2.9	4.5	1.2
<b>Uzbekistan</b>								
2008/09	0.1	3.2	0.2	0.0	0.0	0.2	0.3	0.0
2009/10	0.1	3.2	0.2	0.0	0.0	0.2	0.3	0.0
2010/11	0.1	3.2	0.2	0.0	0.0	0.2	0.3	0.0
2011/12	0.1	3.2	0.2	0.0	0.0	0.2	0.3	0.0
<b>Other Former Soviet Union - 12</b>								
2008/09	1.3	2.8	3.6	0.1	0.0	2.8	3.6	0.5
2009/10	1.3	2.7	3.5	0.1	0.0	2.8	3.6	0.5
2010/11	1.3	2.4	3.2	0.2	0.0	2.5	3.3	0.5
2011/12	1.3	2.4	3.1	0.1	0.0	2.5	3.3	0.4
<b>Total Former Soviet Union - 12</b>								
2008/09	17.3	2.4	41.7	0.3	10.1	21.2	28.7	5.7
2009/10	17.3	2.1	36.0	0.2	9.3	20.7	28.1	4.4
2010/11	14.5	1.5	21.5	0.7	3.3	13.5	20.3	3.1
2011/12	14.6	2.1	31.3	0.4	6.6	17.1	24.4	3.8

## Former Soviet Union: Grain Supply and Demand (Corn)

Millions of Tons/Hectares

Country Mktg Year	Area Harvested	Yield	Production	MY Imports	MY Exports	Feed and Residual	Total Consumpti	Ending Stocks
<b>Former Soviet Union - 12</b>								
<b>Kazakhstan</b>								
2008/09	0.1	4.3	0.4	0.0	0.0	0.3	0.4	0.0
2009/10	0.1	4.7	0.5	0.0	0.0	0.3	0.4	0.0
2010/11	0.1	3.1	0.3	0.0	0.0	0.3	0.3	0.0
2011/12	0.1	4.6	0.4	0.0	0.0	0.3	0.4	0.0
<b>Russia</b>								
2008/09	1.8	3.7	6.7	0.1	1.3	4.5	5.2	0.3
2009/10	1.4	2.9	4.0	0.0	0.4	3.2	3.7	0.1
2010/11	1.4	2.2	3.1	0.2	0.1	2.8	3.2	0.1
2011/12	1.7	3.6	6.3	0.1	0.6	4.5	5.2	0.6
<b>Ukraine</b>								
2008/09	2.4	4.7	11.4	0.0	5.5	5.1	5.9	0.9
2009/10	2.1	5.0	10.5	0.0	5.1	5.0	5.7	0.7
2010/11	2.6	4.5	11.9	0.0	5.0	5.8	6.6	1.1
2011/12	3.5	6.0	21.0	0.0	12.0	7.0	7.8	2.3
<b>Uzbekistan</b>								
2008/09	0.0	4.6	0.2	0.0	0.0	0.2	0.2	0.0
2009/10	0.0	4.6	0.2	0.0	0.0	0.2	0.2	0.0
2010/11	0.0	4.6	0.2	0.0	0.0	0.2	0.2	0.0
2011/12	0.0	4.6	0.2	0.0	0.0	0.2	0.2	0.0
<b>Other Former Soviet Union - 12</b>								
2008/09	0.8	3.6	3.0	0.3	0.1	2.7	3.0	0.7
2009/10	0.8	3.3	2.6	0.2	0.1	2.6	2.9	0.5
2010/11	0.8	3.6	2.9	0.2	0.1	2.7	2.9	0.5
2011/12	0.8	4.2	3.5	0.1	0.3	3.0	3.3	0.6
<b>Total Former Soviet Union - 12</b>								
2008/09	5.2	4.2	21.7	0.4	6.9	12.8	14.7	1.9
2009/10	4.4	4.0	17.7	0.3	5.6	11.2	12.9	1.4
2010/11	5.0	3.7	18.3	0.4	5.2	11.7	13.2	1.7
2011/12	6.2	5.1	31.4	0.2	12.9	14.9	16.9	3.6



**Wheat Supply and Disappearance: Selected Exporters**  
**Million Metric Tons/Hectares**

Country Mktg Year	Area Harvested	Yield	Production	MY Imports	MY Exports	Feed and Residual	Total Consumpti	Ending Stocks
<b>Wheat Competitors</b>								
<b>Argentina</b>								
2003/04	6.0	2.5	15.1	0.0	9.5	0.1	5.4	1.6
2004/05	6.4	2.6	16.9	0.0	11.9	0.1	5.4	1.3
2005/06	5.5	2.5	13.8	0.0	9.6	0.0	5.1	0.4
2006/07	6.2	2.6	16.3	0.0	10.7	0.1	5.4	0.6
2007/08	6.6	2.8	18.6	0.0	11.2	0.1	5.7	2.4
2008/09	5.3	2.1	11.0	0.0	6.8	0.0	5.3	1.3
2009/10	4.0	3.0	12.0	0.0	5.1	0.0	5.8	2.4
2010/11	4.6	3.5	16.1	0.0	9.5	0.0	5.9	3.1
2011/12	5.0	2.9	14.5	0.0	8.5	0.0	5.9	3.2
<b>Australia</b>								
2003/04	13.1	2.0	26.1	0.1	18.0	3.2	6.0	5.4
2004/05	13.4	1.6	21.9	0.1	14.7	3.2	6.0	6.7
2005/06	12.5	2.0	25.2	0.1	16.0	3.7	6.6	9.4
2006/07	11.8	0.9	10.8	0.1	8.7	4.5	7.4	4.2
2007/08	12.6	1.1	13.6	0.1	7.5	3.5	6.5	3.9
2008/09	13.5	1.6	21.4	0.1	14.7	4.2	7.3	3.4
2009/10	13.9	1.6	21.8	0.1	14.8	1.9	4.9	5.6
2010/11	13.6	2.0	27.9	0.1	18.7	3.0	6.1	8.8
2011/12	14.1	2.0	28.3	0.1	21.5	4.0	7.1	8.6
<b>Canada</b>								
2003/04	10.2	2.3	23.0	0.2	15.8	3.1	7.2	6.0
2004/05	9.4	2.6	24.8	0.3	14.9	3.8	8.2	7.9
2005/06	9.4	2.7	25.7	0.3	16.0	3.8	8.2	9.7
2006/07	9.7	2.6	25.3	0.3	19.4	4.5	9.0	6.9
2007/08	8.6	2.3	20.1	0.4	16.1	2.2	6.8	4.4
2008/09	10.0	2.9	28.6	0.4	18.9	3.2	8.0	6.5
2009/10	9.6	2.8	26.8	0.4	19.0	2.2	6.9	7.8
2010/11	8.3	2.8	23.2	0.4	16.6	2.8	7.7	7.2
2011/12	8.5	3.0	25.3	0.4	18.0	3.7	8.8	6.0
<b>Total Wheat Competitors</b>								
2003/04	29.2	2.2	64.3	0.3	43.3	6.4	18.5	13.0
2004/05	29.2	2.2	63.6	0.3	41.5	7.1	19.6	15.9
2005/06	27.3	2.4	64.7	0.4	41.7	7.5	19.9	19.4
2006/07	27.7	1.9	52.4	0.4	38.9	9.1	21.7	11.6

## Wheat Supply and Disappearance: Selected Exporters (Continued)

Million Metric Tons/Hectares

Country Mktg Year	Area Harvested	Yield	Production	MY Imports	MY Exports	Feed and Residual	Total Consumpti	Ending Stocks
2007/08	27.8	1.9	52.2	0.5	34.8	5.8	18.9	10.6
2008/09	28.8	2.1	61.0	0.5	40.4	7.4	20.6	11.2
2009/10	27.5	2.2	60.7	0.5	39.0	4.1	17.7	15.8
2010/11	26.5	2.5	67.2	0.6	44.7	5.8	19.7	19.1
2011/12	27.6	2.5	68.1	0.5	48.0	7.7	21.8	17.8
<b>India</b>								
2003/04	24.9	2.6	65.8	0.0	5.7	0.6	68.9	6.9
2004/05	26.6	2.7	72.2	0.0	2.1	0.5	72.8	4.1
2005/06	26.5	2.6	68.6	0.0	0.8	0.3	70.0	2.0
2006/07	26.4	2.6	69.4	6.7	0.1	0.3	73.5	4.5
2007/08	28.0	2.7	75.8	2.0	0.0	0.2	76.4	5.8
2008/09	28.2	2.8	78.6	0.0	0.0	0.1	70.9	13.4
2009/10	27.8	2.9	80.7	0.2	0.1	0.1	78.2	16.1
2010/11	28.4	2.8	80.8	0.3	0.1	0.2	81.8	15.4
2011/12	29.4	2.9	85.9	0.0	1.0	0.2	84.7	15.6
<b>Turkey</b>								
2003/04	8.6	2.0	16.8	1.1	0.8	1.0	16.8	1.7
2004/05	8.6	2.2	18.5	0.4	2.0	1.0	16.8	1.8
2005/06	8.6	2.2	18.5	0.1	3.2	0.4	16.1	1.1
2006/07	8.6	2.0	17.5	1.7	2.4	0.8	16.7	1.3
2007/08	7.7	2.0	15.5	2.2	1.7	0.8	16.8	0.4
2008/09	7.7	2.2	16.8	3.5	2.2	0.7	16.9	1.5
2009/10	7.8	2.4	18.5	3.2	4.3	0.8	17.1	1.8
2010/11	8.0	2.1	17.0	3.7	3.0	0.7	17.2	2.3
2011/12	7.7	2.4	18.8	3.5	3.7	1.4	18.1	2.8

**Corn Supply and Disappearance: Selected Exporters**  
**Million Metric Tons/Hectares**

Country Mktg Year	Area Harvested	Yield	Production	MY Imports	MY Exports	Feed and Residual	Total Consumpti	Ending Stocks
<b>Argentina</b>								
2003/04	2.3	6.4	15.0	0.0	10.9	2.8	4.4	0.4
2004/05	2.8	7.4	20.5	0.0	14.6	3.5	5.2	1.1
2005/06	2.4	6.5	15.8	0.0	9.5	4.4	6.2	1.3
2006/07	2.8	8.0	22.5	0.0	15.3	4.8	6.7	1.8
2007/08	3.4	6.5	22.0	0.0	14.8	4.9	6.8	2.2
2008/09	2.5	6.2	15.5	0.0	10.3	4.5	6.4	1.0
2009/10	2.8	8.5	23.3	0.0	16.5	5.0	6.9	0.9
2010/11	3.6	6.3	22.5	0.0	15.0	5.1	7.1	1.3
2011/12	3.8	7.6	29.0	0.0	20.0	5.6	7.8	2.5
<b>China</b>								
2003/04	24.1	4.8	115.8	0.0	7.6	97.0	128.4	44.9
2004/05	25.4	5.1	130.3	0.0	7.6	98.0	131.0	36.6
2005/06	26.4	5.3	139.4	0.1	3.7	101.0	137.0	35.3
2006/07	28.5	5.3	151.6	0.0	5.3	104.0	145.0	36.6
2007/08	29.5	5.2	152.3	0.0	0.5	106.0	150.0	38.4
2008/09	29.9	5.6	165.9	0.0	0.2	108.0	153.0	51.2
2009/10	31.2	5.3	164.0	1.3	0.2	118.0	165.0	51.3
2010/11	32.5	5.5	177.2	1.0	0.1	124.0	176.0	53.4
2011/12	33.4	5.7	191.8	3.0	0.2	134.0	191.0	57.0
<b>South Africa</b>								
2003/04	3.3	2.9	9.7	0.2	0.7	4.1	8.7	3.0
2004/05	3.2	3.6	11.7	0.4	2.1	5.0	9.7	3.2
2005/06	2.0	3.4	6.9	0.9	0.5	4.0	8.2	2.3
2006/07	2.9	2.5	7.3	1.1	0.5	4.4	8.6	1.7
2007/08	3.3	4.0	13.2	0.0	2.2	4.3	9.6	3.1
2008/09	2.9	4.3	12.6	0.0	1.7	4.3	9.9	4.1
2009/10	3.3	4.1	13.4	0.0	2.1	4.6	10.3	5.2
2010/11	2.9	3.8	10.9	0.0	3.0	4.7	10.3	2.8
2011/12	3.0	4.2	12.5	0.0	2.0	4.8	10.5	2.8
<b>Brazil</b>								
2003/04	12.4	3.4	42.0	0.4	4.4	30.5	36.3	7.9
2004/05	11.6	3.0	35.0	0.5	0.7	32.1	38.5	4.2
2005/06	12.9	3.2	41.7	1.1	4.5	33.0	39.5	3.0
2006/07	14.0	3.6	51.0	1.4	10.8	34.5	41.0	3.6
2007/08	14.7	4.0	58.6	0.7	7.8	36.0	42.5	12.6
2008/09	14.1	3.6	51.0	1.1	7.1	38.5	45.5	12.1

## Corn Supply and Disappearance: Selected Exporters (Continued)

Million Metric Tons/Hectares

Country Mktg Year	Area Harvested	Yield	Production	MY Imports	MY Exports	Feed and Residual	Total Consumpti	Ending Stocks
2009/10	12.9	4.3	56.1	0.4	11.6	40.0	47.0	10.0
2010/11	13.8	4.2	57.5	0.5	9.0	42.5	49.5	9.5
2011/12	14.5	4.2	61.0	0.5	8.5	45.0	52.0	10.5
<b>Total Corn Competitors</b>								
2003/04	42.1	4.3	182.5	0.6	23.7	134.4	177.8	56.1
2004/05	43.0	4.6	197.5	0.9	25.0	138.6	184.4	45.1
2005/06	43.7	4.7	203.8	2.1	18.3	142.4	190.9	41.8
2006/07	48.2	4.8	232.4	2.6	31.9	147.7	201.3	43.6
2007/08	50.9	4.8	246.1	0.8	25.3	151.2	208.9	56.3
2008/09	49.4	5.0	245.0	1.2	19.3	155.3	214.8	68.4
2009/10	50.1	5.1	256.8	1.7	30.3	167.6	229.2	67.3
2010/11	52.8	5.1	268.2	1.5	27.1	176.3	242.9	67.0
2011/12	54.7	5.4	294.3	3.5	30.7	189.4	261.3	72.8

**Barley Supply and Disappearance: Selected Exporters**  
**Million Metric Tons/Hectares**

Country Mktg Year	Area Harvested	Yield	Production	MY Imports	MY Exports	Feed and Residual	Total Consumpti	Ending Stocks
<b>Australia</b>								
2003/04	4.5	2.3	10.4	0.0	6.4	2.2	3.1	1.9
2004/05	4.6	1.7	7.7	0.0	4.3	2.5	3.5	1.9
2005/06	4.4	2.2	9.5	0.0	5.3	2.5	3.5	2.6
2006/07	4.2	1.0	4.3	0.0	1.9	2.9	4.0	1.0
2007/08	4.9	1.5	7.2	0.0	3.4	2.1	3.1	1.7
2008/09	5.0	1.6	8.0	0.0	3.2	2.9	4.0	2.4
2009/10	4.4	1.8	7.9	0.0	3.9	3.3	4.5	1.9
2010/11	3.7	2.2	8.1	0.0	4.2	3.4	4.7	1.1
2011/12	4.0	2.1	8.5	0.0	3.6	3.4	4.7	1.3
<b>Canada</b>								
2003/04	4.4	2.8	12.2	0.0	1.8	8.4	9.7	2.1
2004/05	3.8	3.3	12.6	0.1	1.2	8.8	10.1	3.4
2005/06	3.6	3.2	11.7	0.0	2.3	8.4	9.6	3.3
2006/07	3.2	3.0	9.6	0.0	1.2	8.8	10.2	1.5
2007/08	4.0	2.7	11.0	0.1	3.0	6.6	7.9	1.6
2008/09	3.5	3.4	11.8	0.0	1.5	7.7	9.1	2.8
2009/10	2.9	3.3	9.5	0.0	1.3	7.3	8.5	2.6
2010/11	2.4	3.2	7.6	0.0	1.2	6.4	7.6	1.4
2011/12	2.4	3.3	7.8	0.1	0.7	6.1	7.2	1.3
<b>EU-27</b>								
2003/04	14.1	4.0	55.8	0.7	2.6	41.8	58.0	4.5
2004/05	13.7	4.7	64.1	0.3	3.3	38.6	54.6	11.1
2005/06	13.8	4.0	54.8	0.1	3.3	38.2	54.1	8.5
2006/07	13.8	4.1	56.2	0.2	3.5	38.7	55.7	5.8
2007/08	13.8	4.2	57.5	0.3	3.8	38.7	54.2	5.7
2008/09	14.5	4.5	65.5	0.3	3.6	41.5	57.0	10.9
2009/10	13.9	4.5	62.1	0.1	1.1	41.5	56.5	15.5
2010/11	12.5	4.2	53.0	0.2	4.9	41.2	56.4	7.5
2011/12	12.1	4.3	52.4	0.1	2.5	37.0	52.0	5.4

## Sorghum Supply and Disappearance: Selected Exporters

Million Metric Tons/Hectares

Country Mktg Year	Area Harvested	Yield	Production	MY Imports	MY Exports	Feed and Residual	Total Consumpti	Ending Stocks
<b>Argentina</b>								
2003/04	0.5	4.6	2.2	0.0	0.2	1.9	2.0	0.4
2004/05	0.6	5.2	2.9	0.0	0.4	2.4	2.6	0.4
2005/06	0.5	4.7	2.3	0.0	0.2	2.1	2.3	0.2
2006/07	0.6	4.7	2.8	0.0	1.1	1.5	1.7	0.2
2007/08	0.6	4.7	2.9	0.0	1.2	1.0	1.2	0.7
2008/09	0.5	3.7	1.7	0.0	1.1	1.0	1.1	0.2
2009/10	0.8	4.8	3.6	0.0	1.8	1.7	1.9	0.2
2010/11	1.0	4.4	4.4	0.0	1.9	1.9	2.1	0.6
2011/12	1.0	4.7	4.7	0.0	2.2	2.1	2.3	0.8
<b>Australia</b>								
2003/04	0.7	2.7	2.0	0.0	0.6	1.4	1.4	0.1
2004/05	0.8	2.7	2.0	0.0	0.2	1.8	1.8	0.1
2005/06	0.8	2.5	1.9	0.0	0.1	1.9	1.9	0.0
2006/07	0.6	2.1	1.3	0.0	0.1	1.2	1.2	0.0
2007/08	0.9	4.0	3.8	0.0	0.8	2.2	2.2	0.8
2008/09	0.8	3.5	2.7	0.0	1.0	1.8	1.8	0.7
2009/10	0.5	3.0	1.5	0.0	0.3	1.2	1.2	0.7
2010/11	0.7	3.1	2.1	0.0	1.0	1.3	1.3	0.4
2011/12	0.7	3.6	2.4	0.0	1.0	1.4	1.4	0.4

## U.S. Grains Supply and Distribution: Wheat, Corn, Sorghum, Barley, Oats, Rye, and Rice

Thousand Metric Tons/Hectares

	Area Harvested	Yield	Rough Production	Production	Imports	TY Imports	Exports	TY Exports	Feed Dom. Consumption	Domestic Consumption	Ending Stocks
<b>Wheat</b>											
2009/10	20,191	3	nr	60,366	3,227	3,235	23,930	24,172	4,078	30,978	26,552
2010/11	19,271	3	nr	60,062	2,638	2,571	35,076	35,977	3,589	30,710	23,466
2011/12	18,496	3	nr	54,413	3,266	3,200	25,174	24,500	4,354	32,065	23,906
<b>Corn</b>											
2009/10	32,169	10	nr	332,549	212	237	50,295	49,721	130,173	281,590	43,380
2010/11	32,960	10	nr	316,165	703	684	46,599	45,254	121,722	284,990	28,659
2011/12	33,968	9	nr	312,687	381	400	40,642	41,000	116,845	279,540	21,545
<b>Sorghum</b>											
2009/10	2,234	4	nr	9,728	0	0	4,211	4,074	3,573	5,859	1,048
2010/11	1,946	5	nr	8,773	1	1	3,819	3,794	3,146	5,306	697
2011/12	1,794	3	nr	6,246	0	0	1,778	1,900	2,159	4,445	720
<b>Barley</b>											
2009/10	1,260	4	nr	4,949	361	302	123	152	1,040	4,604	2,515
2010/11	998	4	nr	3,925	207	148	165	181	1,084	4,537	1,945
2011/12	906	4	nr	3,392	218	200	218	200	653	4,137	1,200
<b>Oats</b>											
2009/10	558	2	nr	1,351	1,636	1,607	31	38	1,930	3,011	1,166
2010/11	511	2	nr	1,178	1,468	1,468	41	45	1,715	2,789	982
2011/12	380	2	nr	779	1,637	1,500	44	45	1,565	2,668	686
<b>Rye</b>											
2009/10	102	2	nr	178	108	129	2	4	37	273	24
2010/11	107	2	nr	189	141	148	4	3	93	330	20
2011/12	98	2	nr	161	127	125	5	5	43	280	23
<b>Rice, Milled</b>											
2009/10	1,256	8	9,972	7,133	604	562	3,514	3,868	nr	4,016	1,184
2010/11	1,463	8	11,027	7,593	582	615	3,487	3,250	nr	4,358	1,514
2011/12	1,062	8	8,530	6,035	603	650	2,920	3,050	nr	4,027	1,205

Notes: Wheat Trade Year (TY) statistics are on July/June years. Barley, corn, sorghum, rye and oats Trade Year (TY) statistics are on Oct/Sept years. Rice Trade Year (TY) statistics are for the subsequent calendar year; 'Imports' and 'Exports' columns contain data on the local marketing year: wheat, barley, oats and rye are June/May; corn and sorghum are Sept/Aug; rice is Aug/July.

**Total Wheat and Coarse Grains: Supply and Demand**

**Millions of Metric Tons/Hectares**

	<b>Area Harvested</b>	<b>Yield</b>	<b>Production</b>	<b>TY Exports</b>	<b>Feed Dom. Consumpti</b>	<b>Domestic Consumpti</b>	<b>Ending Stocks</b>
<b>Wheat and Coarse Grains</b>							
1982/83	576.9	2.2	1,248.0	189.6	593.4	1,197.1	332.1
1983/84	563.8	2.1	1,162.5	193.2	588.4	1,216.1	278.5
1984/85	567.0	2.3	1,315.0	203.6	609.9	1,253.5	340.0
1985/86	570.9	2.3	1,328.5	165.2	613.1	1,247.9	420.6
1986/87	565.6	2.4	1,348.0	174.7	644.2	1,299.4	469.2
1987/88	544.8	2.4	1,285.9	202.2	655.1	1,329.8	423.1
1988/89	542.4	2.2	1,218.1	203.3	618.2	1,302.0	339.3
1989/90	548.9	2.4	1,327.4	208.9	642.9	1,346.2	320.5
1990/91	549.0	2.6	1,417.6	190.1	667.3	1,369.5	368.7
1991/92	546.3	2.5	1,355.7	207.5	650.1	1,364.9	359.5
1992/93	548.8	2.6	1,431.6	205.2	661.4	1,389.1	399.2
1993/94	539.2	2.5	1,356.1	188.2	654.0	1,389.2	366.1
1994/95	537.6	2.6	1,392.5	200.1	666.9	1,396.0	362.6
1995/96	533.4	2.5	1,338.5	187.5	638.0	1,381.9	319.1
1996/97	552.8	2.7	1,490.5	198.4	670.9	1,442.9	366.7
1997/98	539.5	2.8	1,491.6	190.3	681.2	1,444.7	413.6
1998/99	533.9	2.8	1,481.9	198.7	680.7	1,448.1	447.5
1999/00	514.7	2.8	1,464.9	214.3	685.8	1,468.0	443.7
2000/01	514.3	2.8	1,446.8	205.1	693.9	1,470.1	420.4
2001/02	516.3	2.9	1,480.2	208.5	708.1	1,495.6	404.9
2002/03	506.6	2.8	1,443.2	209.6	705.9	1,506.0	342.1
2003/04	516.0	2.9	1,471.6	206.2	712.3	1,534.4	279.3
2004/05	517.7	3.2	1,642.4	215.2	751.6	1,585.9	335.7
2005/06	520.6	3.1	1,599.2	222.8	751.6	1,616.3	318.6
2006/07	518.4	3.1	1,585.0	230.4	741.7	1,629.7	273.9
2007/08	536.9	3.2	1,692.8	245.3	754.8	1,675.6	291.1
2008/09	538.8	3.3	1,793.9	253.6	765.4	1,723.9	361.2
2009/10	538.1	3.3	1,801.0	253.4	770.0	1,764.7	397.5
2010/11	532.9	3.3	1,749.6	247.6	759.4	1,781.1	365.9
2011/12	537.1	3.4	1,834.2	256.1	792.9	1,830.9	369.2

Notes: Wheat and coarse grains trade data are on July/June years through 1975/76. From 1976/77 to the present, coarse grains data are on an Oct/Sept trade year.



## World Wheat and Coarse Grains: Supply and Demand

Millions of Metric Tons/Hectares

	Area Harvested	Yield	Production	TY Exports	Feed Dom. Consumpti	Domestic Consumpti	Ending Stocks
<b>Wheat</b>							
1989/90	226.3	2.4	533.1	103.9	103.7	531.3	137.1
1990/91	231.7	2.5	588.8	101.3	130.1	554.3	171.6
1991/92	223.4	2.4	543.5	111.4	113.8	551.8	163.2
1992/93	222.8	2.5	562.6	113.2	110.1	547.7	177.9
1993/94	221.8	2.5	558.5	101.7	108.0	553.0	183.4
1994/95	214.5	2.4	523.0	101.5	99.6	542.1	164.2
1995/96	219.1	2.5	537.5	99.2	93.3	546.1	155.7
1996/97	230.3	2.5	581.5	104.0	97.9	573.4	163.8
1997/98	228.5	2.7	610.2	104.5	102.0	576.7	197.2
1998/99	225.4	2.6	590.4	102.0	105.0	578.3	209.4
1999/00	215.7	2.7	586.8	111.9	100.6	585.5	210.7
2000/01	218.0	2.7	583.1	102.4	105.2	585.4	208.4
2001/02	215.4	2.7	583.6	108.0	106.9	586.6	205.3
2002/03	215.0	2.6	569.6	106.8	111.1	604.9	170.0
2003/04	210.0	2.6	555.4	103.6	97.2	589.6	135.9
2004/05	217.2	2.9	626.7	113.9	106.6	607.1	155.5
2005/06	219.6	2.8	618.8	114.1	112.8	621.9	152.4
2006/07	212.9	2.8	596.1	115.6	107.9	615.9	132.6
2007/08	218.1	2.8	612.0	116.4	99.3	617.7	126.9
2008/09	225.3	3.0	682.8	143.0	118.1	642.6	167.0
2009/10	227.6	3.0	685.4	134.4	115.6	650.3	202.1
2010/11	223.2	2.9	651.6	132.3	112.5	654.0	199.7
2011/12	222.5	3.1	689.0	138.1	130.0	680.2	208.5
<b>Coarse Grains</b>							
1989/90	322.5	2.5	794.3	105.0	539.2	814.9	183.4
1990/91	317.2	2.6	828.8	88.9	537.3	815.2	197.1
1991/92	322.9	2.5	812.2	96.2	536.2	813.1	196.3
1992/93	326.0	2.7	868.9	91.9	551.3	841.4	221.3
1993/94	317.4	2.5	797.6	86.5	546.1	836.2	182.7
1994/95	323.1	2.7	869.4	98.6	567.4	853.8	198.3
1995/96	314.4	2.5	800.9	88.3	544.7	835.8	163.4
1996/97	322.5	2.8	909.1	94.4	573.0	869.5	203.0
1997/98	311.0	2.8	881.4	85.8	579.2	867.9	216.4
1998/99	308.6	2.9	891.5	96.7	575.7	869.7	238.1
1999/00	299.0	2.9	878.1	102.4	585.2	882.6	233.1
2000/01	296.2	2.9	863.7	102.7	588.8	884.8	212.0
2001/02	300.9	3.0	896.6	100.5	601.3	909.0	199.6
2002/03	291.6	3.0	873.6	102.8	594.8	901.1	172.0
2003/04	306.0	3.0	916.1	102.6	615.1	944.8	143.3
2004/05	300.5	3.4	1,015.6	101.3	645.0	978.8	180.2
2005/06	301.1	3.3	980.4	108.6	638.7	994.4	166.2
2006/07	305.5	3.2	988.9	114.7	633.8	1,013.8	141.3
2007/08	318.7	3.4	1,080.8	128.9	655.6	1,057.9	164.2
2008/09	313.5	3.5	1,111.2	110.7	647.3	1,081.2	194.2
2009/10	310.5	3.6	1,115.6	119.0	654.5	1,114.4	195.3
2010/11	309.7	3.5	1,098.0	115.3	646.9	1,127.2	166.2
2011/12	314.5	3.6	1,145.2	118.0	662.9	1,150.7	160.7

Notes: Wheat and coarse grains trade data are on July/June years through 1975/76. From 1976/77 to the present, coarse grains data are on an Oct/Sept trade year.

## World Corn and Barley: Supply and Demand

Millions of Metric Tons/Hectares

	Area Harvested	Yield	Production	TY Exports	Feed Dom. Consumpti	Domestic Consumpti	Ending Stocks
<b>Corn</b>							
1989/90	127.3	3.6	461.7	74.5	324.8	474.1	132.9
1990/91	129.2	3.7	482.0	58.8	318.5	473.4	141.4
1991/92	132.6	3.7	493.0	63.0	334.4	493.3	141.0
1992/93	133.2	4.0	535.6	62.6	348.7	512.1	162.7
1993/94	130.7	3.6	475.8	57.4	342.0	509.0	129.4
1994/95	135.2	4.1	559.3	71.9	371.5	535.6	153.2
1995/96	135.0	3.8	516.4	64.8	365.1	536.6	133.0
1996/97	141.7	4.2	593.0	66.7	387.7	560.1	165.8
1997/98	136.3	4.2	574.4	63.1	400.4	573.8	166.4
1998/99	139.2	4.4	606.0	68.7	404.3	581.5	191.0
1999/00	139.1	4.4	608.1	72.3	422.4	605.3	193.8
2000/01	137.3	4.3	591.4	75.9	427.2	610.1	175.1
2001/02	137.7	4.4	601.0	72.8	436.1	624.8	151.4
2002/03	137.4	4.4	603.2	77.0	432.9	627.5	127.0
2003/04	142.0	4.4	627.5	79.1	445.5	649.2	105.4
2004/05	145.5	4.9	715.8	76.0	475.4	689.3	131.9
2005/06	145.7	4.8	699.7	82.7	477.6	706.7	124.9
2006/07	149.9	4.8	714.0	91.5	477.8	728.7	110.2
2007/08	161.2	4.9	794.7	98.3	497.5	773.3	131.6
2008/09	158.8	5.0	799.2	84.0	480.5	783.4	147.3
2009/10	157.7	5.2	819.2	93.0	488.4	822.5	144.1
2010/11	163.2	5.1	827.6	91.3	493.8	843.4	128.3
2011/12	168.3	5.2	867.5	94.0	510.6	868.6	127.2
<b>Barley</b>							
1989/90	73.7	2.3	166.2	18.5	126.0	170.4	27.5
1990/91	73.0	2.5	179.5	19.6	130.8	175.5	31.5
1991/92	76.6	2.2	169.9	19.4	120.3	166.5	34.9
1992/93	73.1	2.3	166.3	16.4	119.0	165.6	35.0
1993/94	73.8	2.3	169.0	18.8	123.8	169.1	34.9
1994/95	72.8	2.2	160.7	15.3	120.9	165.6	30.0
1995/96	68.6	2.1	141.2	13.4	107.8	150.7	20.5
1996/97	65.5	2.3	153.1	17.9	106.3	149.5	24.1
1997/98	64.5	2.4	153.9	12.8	104.1	145.8	32.2
1998/99	60.8	2.2	136.0	17.8	99.5	139.3	29.0
1999/00	54.5	2.3	127.4	17.8	94.0	132.5	23.9
2000/01	53.9	2.5	133.1	16.2	94.6	134.4	22.6
2001/02	56.3	2.5	143.5	17.2	95.5	136.8	29.3
2002/03	55.8	2.4	134.3	16.3	95.0	136.1	27.5
2003/04	59.4	2.4	142.2	14.8	102.8	146.3	23.4
2004/05	58.2	2.6	152.3	17.0	100.2	142.7	33.0
2005/06	56.2	2.4	136.2	17.5	97.5	141.2	28.1
2006/07	57.1	2.4	137.1	14.6	98.4	143.8	21.4
2007/08	57.5	2.3	133.3	18.6	91.3	134.3	20.4
2008/09	55.8	2.8	155.2	18.2	100.2	144.3	31.4
2009/10	55.8	2.7	150.9	17.3	100.8	144.8	37.5
2010/11	50.5	2.4	123.5	15.1	91.9	135.6	25.4
2011/12	50.3	2.6	133.3	16.1	91.8	136.1	22.6

Notes: Coarse grains trade data are on July June years through 1975/76. From 1976/77 to the present, coarse grains data are on an Oct/Sept trade year.

## World Rice: Supply and Demand

Millions of Metric Tons/Hectares

	Area Harvested	Yield	Rough Production	Production	TY Exports	Domestic Consumpti	Ending Stocks
<b>Rice, Milled</b>							
1982/83	140.5	3.0	418.2	285.0	11.2	278.7	56.8
1983/84	144.6	3.1	450.9	306.9	11.9	294.4	69.3
1984/85	144.1	3.2	464.9	316.8	11.0	298.4	87.7
1985/86	144.7	3.2	467.3	318.0	11.8	308.0	97.7
1986/87	144.8	3.2	464.6	316.1	12.9	310.4	103.3
1987/88	141.4	3.3	464.8	315.1	11.4	313.1	105.3
1988/89	146.6	3.3	490.8	332.1	14.0	325.7	111.7
1989/90	147.8	3.5	510.3	345.2	11.7	336.3	120.6
1990/91	147.0	3.5	519.4	351.4	12.3	345.3	126.7
1991/92	147.5	3.5	522.8	353.2	14.4	353.2	126.7
1992/93	146.5	3.6	524.2	354.0	14.9	357.5	123.2
1993/94	145.3	3.6	526.1	354.7	16.6	358.9	119.0
1994/95	147.4	3.7	539.9	364.1	20.8	365.5	117.6
1995/96	148.4	3.7	547.3	368.8	19.7	368.3	118.1
1996/97	150.1	3.8	565.3	381.4	18.9	379.2	120.3
1997/98	151.7	3.8	575.2	387.4	27.6	379.9	127.7
1998/99	153.1	3.8	587.0	394.9	24.8	388.6	134.0
1999/00	155.9	3.9	608.8	409.3	22.8	400.2	143.1
2000/01	152.4	3.9	594.3	399.4	24.4	395.8	146.7
2001/02	151.4	3.9	594.7	399.7	27.8	413.5	132.9
2002/03	146.9	3.8	563.5	378.5	27.5	408.4	102.9
2003/04	149.3	3.9	585.4	392.5	27.3	413.9	81.5
2004/05	151.8	3.9	597.0	401.2	29.0	408.7	74.0
2005/06	153.8	4.0	622.9	418.2	29.1	415.6	76.6
2006/07	154.5	4.1	626.2	420.0	31.9	421.5	75.1
2007/08	155.2	4.2	644.8	432.3	29.8	427.4	80.0
2008/09	157.8	4.2	669.1	447.5	29.3	435.9	91.5
2009/10	156.0	4.2	659.4	440.5	31.6	437.9	94.2
2010/11	157.0	4.3	674.5	449.8	34.8	447.3	96.7
2011/12	160.3	4.3	690.3	460.8	32.9	458.1	99.5

Notes: Stocks, exports and consumption are expressed on a milled basis in marketing years.

---

## **ENDNOTES TO GRAIN: WORLD MARKETS AND TRADE**

### **REGIONAL TABLES**

**North America:** Canada, Mexico, the United States.

**Central America:** Belize, Costa Rica, El Salvador, Guatemala, Honduras, Nicaragua, Panama.

**Caribbean:** Anguilla, Antigua and Barbuda, Aruba, Bahamas, Barbados, Bermuda, British Virgin Islands, Cayman Islands, Cuba, Dominica, Dominican Republic, French West Indies, Grenada, Guadeloupe, Haiti, Jamaica and Dep, Leeward-Windward Islands, Martinique, Montserrat, Netherlands Antilles, Puerto Rico, Kitts and Nevis, St. Lucia, St. Vincent and the Grenadines, Trinidad and Tobago, Turks and Caicos Islands, Virgin Islands of the U.S.

**South America:** Argentina, Bolivia, Brazil, Chile, Colombia, Ecuador, Falkland Islands (Islas Malvinas), French Guiana, Guyana, Paraguay, Peru, Suriname, Uruguay, Venezuela.

**EU:** Austria, Belgium/Luxembourg, Bulgaria, Cyprus, Czech Republic, Denmark, Estonia, Finland, France, Germany, Greece, Hungary, Ireland, Italy, Latvia, Lithuania, Malta, Netherlands, Poland, Portugal, Romania, Slovakia, Slovenia, Spain, Sweden, United Kingdom.

**Other Europe:** Albania, Azores, Bosnia and Herzegovina, Croatia, Former Yugoslavia, Gibraltar, Iceland, Macedonia, Montenegro, Norway, Serbia, Switzerland.

**Former Soviet Union:** Armenia, Azerbaijan, Belarus, Georgia, Kazakhstan, Kyrgyzstan, Moldova, Russia, Tajikistan, Turkmenistan, Ukraine, Uzbekistan.

**Middle East:** Bahrain, Iran, Iraq, Israel, Jordan, Kuwait, Lebanon, Oman, Qatar, Saudi Arabia, Syria, Turkey, United Arab Emirates, Yemen.

**North Africa:** Algeria, Egypt, Libya, Morocco, Tunisia.

**Sub-Saharan Africa:** all African countries except North Africa.

**East Asia:** China, Hong Kong, Japan, South Korea, North Korea, Macau, Mongolia, Taiwan.

**South Asia:** Afghanistan, Bangladesh, Bhutan, India, Nepal, Pakistan, Sri Lanka, Maldives.

**Southeast Asia:** Brunei, Burma, Cambodia, Indonesia, Laos, Malaysia, Philippines, Singapore, Thailand, Vietnam.

**Oceania:** Australia, Fiji, New Zealand, Papua New Guinea.

---

## **OTHER NOTES**

**Local Marketing Years (LMY):** LMY refers to the 12-month period following the main harvest, when the crop is marketed (i.e., consumed, traded, or stored). The year first listed begins a country's LMY for that commodity (2008/09 starts in 2008); except for summer grains in certain Southern Hemisphere countries and for rice in selected countries, where the second year begins the LMY (2008/09 starts in 2009). Key exporter LMY's are:

<b>Wheat</b>	<b>Corn</b>	<b>Barley</b>	<b>Sorghum</b>
Argentina (Dec/Nov)	Argentina (Mar/Feb)	Australia (Nov/Oct)	Argentina (Mar/Feb)
Australia (Oct/Sep)	Brazil (Mar/Feb)	Canada (Aug/Jul)	Australia (Mar/Feb)
Canada (Aug/Jul)	China (Oct/Sep)	EU-27 (Jul/Jun)	United States (Sep/Aug)
China (Jul/Jun)	South Africa (May/Apr)	Russia (Jul/Jun)	
EU-27 (Jul/Jun)	United States (Sep/Aug)	Ukraine (Jul/Jun)	
India (Apr/Mar)		United States (Jun/May)	
Kazakhstan (Jul/Jun)			
Russia (Jul/Jun)			
Turkey (Jun/May)			
Ukraine (Jul/Jun)			
United States (Jun/May)			

For a complete list of local marketing years, please see the FAS website (<http://www.fas.usda.gov/psdonline/psdAvailability.aspx>).

**Stocks:** Unless otherwise stated, stock data are based on an aggregate of differing local marketing years and should not be construed as representing world stock levels at a fixed point in time.

**Consumption:** World totals for consumption reflect total utilization, including food, seed, industrial, feed, and waste; as well as differences in local marketing year imports and local marketing year exports. Consumption statistics for regions and individual countries, however, reflect food, seed, industrial, feed, and waste only.

**Trade:** All PSD tables are balanced on the different local marketing years. All trade tables contain Trade Year (TY) data which puts all countries on a uniform, 12-month period for analytical comparisons: wheat is July/June; coarse grains, corn, barley, sorghum, oats, and rye are Oct/Sept; and rice is calendar year.

**EU Consolidation:** The trade figures starting from 1999/00 represent EU-27 and exclude all intra-trade. For the years 1960/61 through 1998/99, figures are the EU-15 and also exclude all intra-trade. EU-15 member states' data for grains are no longer maintained in the official USDA database. Data for the individual NMS-10, plus Bulgaria and Romania, exists only prior to 1999/00.

**Statistics:** (1) Wheat trade statistics include wheat, flour, and selected pasta products on a grain equivalent basis. (2) Rice trade statistics include rough, brown, milled, and broken on a milled

---

equivalent basis. (3) Coarse grains statistics include corn, barley, sorghum, oats, rye, millet, and mixed grains but exclude trade in barley malt, millet, and mixed grains.

**Unaccounted:** This term includes grain in transit, reporting discrepancies in some countries, and trade to countries outside the USDA database.

The Field Crops and Livestock Branch, Industry and Sector Analysis Division, Foreign Agricultural Service, USDA, Washington DC 20250, prepared this circular. Information is gathered from official statistics of foreign governments and other foreign source materials, reports of U.S. agricultural attachés and Foreign Service officers, office research, and related information. Further information may be obtained by writing the Division or telephoning (202) 720-6590.

**Note:** The previous report in this series was the Grain: World Markets and Trade Foreign Agricultural Service Circular FG 11-11 November 2011. For further details on world grain production, please see World Agricultural Production Foreign Agricultural Service Circular WAP 12-11 December 2011.

This circular is available in its entirety on the World Wide Web via the Foreign Agricultural Service Home Page. The address is: <http://www.fas.usda.gov>