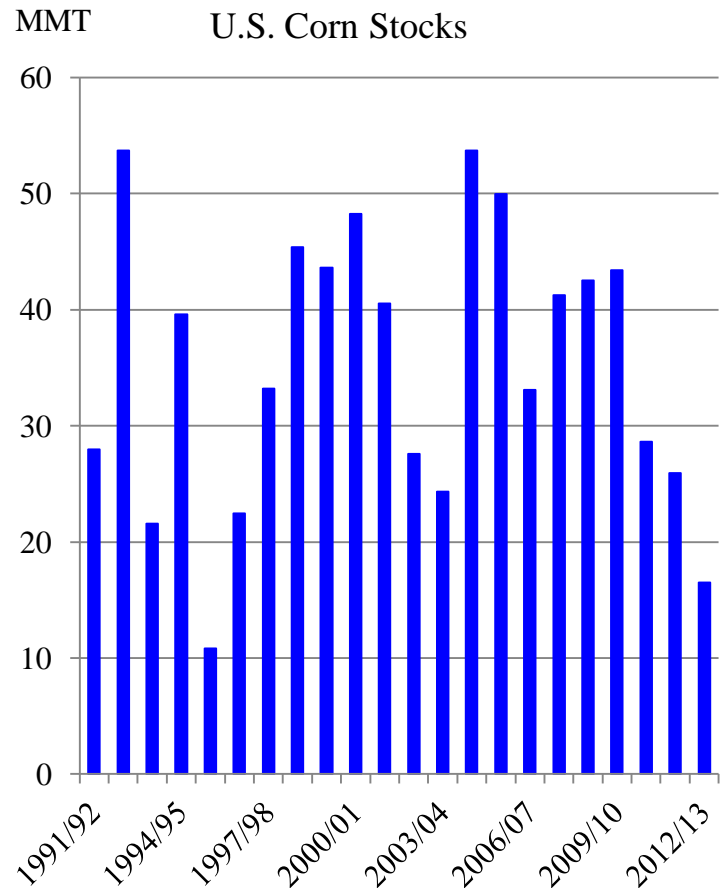
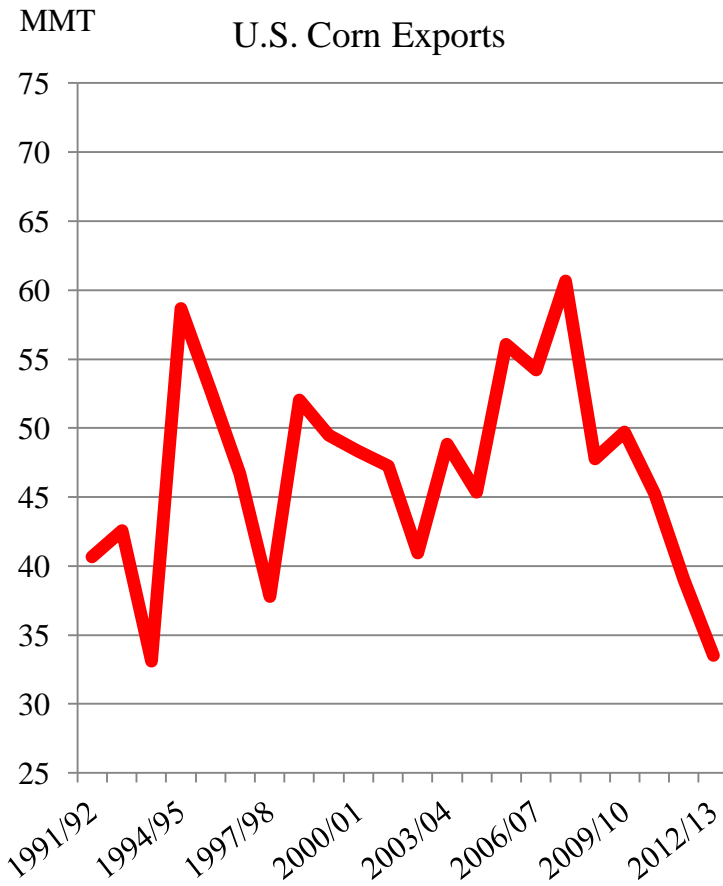




# Grain: World Markets and Trade

## U.S. Corn Exports Slashed; Lowest Stocks Since 1995/96



Extreme heat and dryness in much of the U.S. corn belt continued to decimate the U.S. corn crop during July. The reduction in U.S. corn production is estimated to result in the lowest stocks, 16.5 million tons (MT), since 1995/96. The supply situation in the United States will constrain exports, which are estimated at 33.5 MT, the lowest in 19 years. Major global importers will struggle to fulfill their demand for corn in feed rations and are expected to turn to other suppliers, particularly South American, and to diversify their feedstuffs. South American producers are expected to respond to record prices by planting more corn in the coming months.

Reduced prospects for the U.S. corn crop result in a forecast record season-average farm price of \$8.20 per bushel midpoint, surpassing last year's record of \$6.25.

---

## **TABLE OF CONTENTS**

<b>World Markets and Trade: Commentary and Current Data</b>	
Wheat .....	4
Rice .....	10
Coarse Grains .....	14
<b>Historical Data Series for Selected Regions and Countries .....</b>	<b>35</b>
<b>Endnotes to Grain: World Markets and Trade .....</b>	<b>54</b>

The Foreign Agricultural Service (FAS) updates its production, supply and distribution database for cotton, oilseeds, and grains at 9 a.m. on the day the World Agricultural Supply and Demand Estimates (WASDE) report is released. It is available on the FAS website (<http://www.fas.usda.gov/psdonline/>). This circular is released at 10:00 a.m. on the same day, together with its downloadable data set.

## All Grain Summary Comparison

	Marketing Year	Wheat			Rice, Milled			Corn		
		2010/11	2011/12	2012/13	2010/11	2011/12	2012/13	2010/11	2011/12	2012/13
<b>Production</b>										
United States	(Jun-May)	60.1	54.4	61.7	7.6	5.9	6.1	316.2	313.9	273.8
Other		591.8	640.8	601.1	441.8	459.2	457.2	514.6	562.9	575.2
<b>World Total</b>		651.9	695.2	662.8	449.4	465.0	463.2	830.8	876.8	849.0
<b>Domestic Consumption</b>										
United States	(Jun-May)	30.7	32.2	33.8	4.3	3.7	3.9	285.0	277.9	252.1
Other		623.0	655.9	649.9	439.5	452.9	460.0	565.2	584.4	605.3
<b>World Total</b>		653.7	688.1	683.7	443.8	456.6	464.0	850.2	862.3	857.4
<b>Ending Stocks</b>										
United States	(Jun-May)	23.5	20.2	19.0	1.5	1.1	0.9	28.6	25.9	16.5
Other		174.5	177.4	158.2	97.1	103.9	100.9	98.8	110.0	106.8
<b>World Total</b>		198.0	197.6	177.2	98.6	105.0	101.8	127.5	136.0	123.3
<b>TY Imports</b>										
United States	(Jun-May)	2.6	3.1	3.5	0.6	0.7	0.8	0.7	0.7	1.9
Other		128.0	145.6	130.4	33.0	32.3	32.7	90.2	95.7	86.6
<b>World Total</b>		130.6	148.7	133.9	33.6	33.0	33.5	90.9	96.3	88.5
<b>TY Exports</b>										
United States	(Jun-May)	36.0	28.1	32.5	3.2	3.5	3.1	45.2	39.0	33.5
Other		97.8	123.5	104.2	32.9	32.2	32.4	46.6	59.5	57.4
<b>World Total</b>		133.7	151.6	136.7	36.2	35.7	35.5	91.9	98.5	90.9

Note: Consumption in this table has not been adjusted for differences in marketing year imports and exports and therefore differs from global totals shown elsewhere.

Marketing years for U.S. grains are: Wheat (Jun-May), Rice (Aug-Jul), Corn (Sep-Aug).  
'Marketing Year' column is germane for U.S. wheat only.

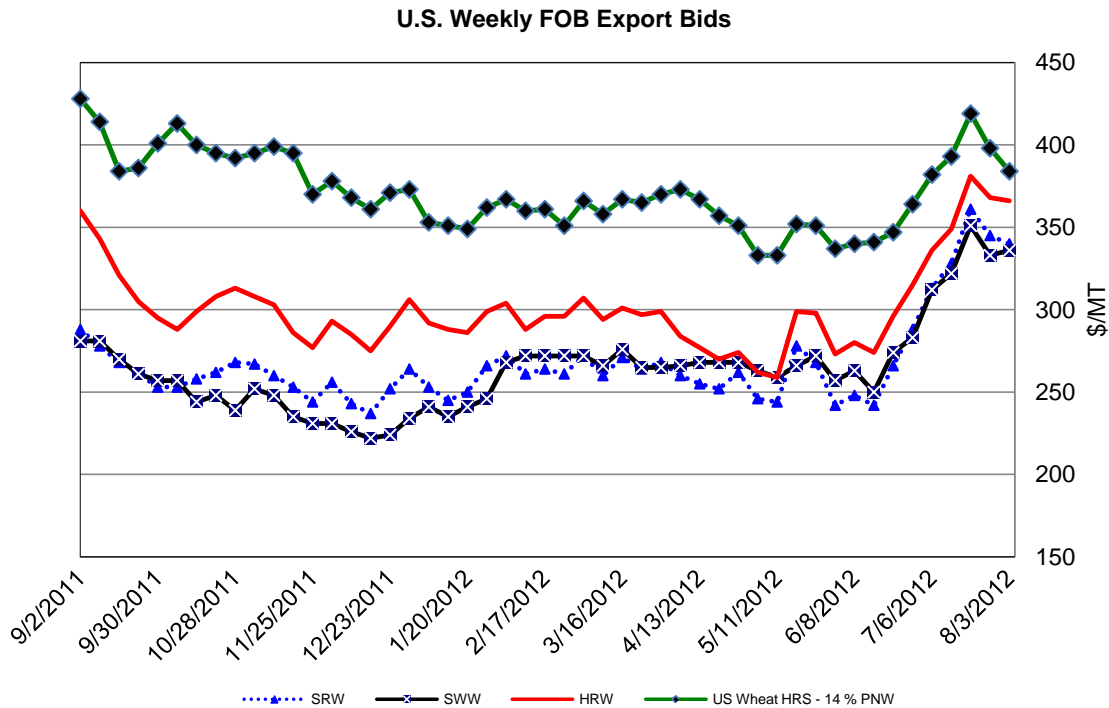
---

# WHEAT: WORLD MARKETS AND TRADE

## OVERVIEW

Global wheat production for 2012/13 is lowered 2.5 million tons as cuts in Russia, Kazakhstan, and Argentina more than offset larger crops in Ukraine, Canada, and India. Despite lower global production, global trade is forecast up as high corn prices will encourage increased feed-quality wheat trade. Russian exports are cut significantly again this month due to continued dry conditions. Most other exporters are raised this month to make up for this supply shortfall and higher demand for wheat for feeding. U.S. exports, however, are unchanged this month as U.S. supplies remain uncompetitive at current prices. U.S. supplies are up slightly with higher production. Global trade in 2011/12 hit a new record reflecting strong late-season shipments. The 2012/13 season-average U.S. farm price is projected \$1.50 higher at a record \$7.60-9.00 per bushel.

## PRICES:



**Domestic:** Prices of all wheat classes continued to surge earlier in July before dropping slightly. Higher corn prices are supporting wheat prices. Hard Red Winter (HRW) soared \$30 to \$366 per ton. Soft Red Winter (SRW) advanced \$27 to \$340 per ton, while Soft White Winter (SWW) jumped \$24 to \$336 per ton. Hard Red Spring (HRS) rose \$2 to \$384 per ton.

---

## TRADE CHANGES IN 2012/13

### **Selected Exporters**

- **Argentina** is cut 500,000 tons to 6.5 million as a result of reduced crop prospects.
- **Australia** is up 500,000 tons to 21.0 million due to a continued strong export pace (from 2011/12) and abundant old-crop supplies.
- **Brazil** is raised 500,000 tons to 1.0 million as higher world prices will pull domestic wheat into export channels.
- **Canada** is boosted 1.0 million tons to 19.5 million on a larger expected crop and ample supplies.
- **EU** is up 1.0 million tons to 17.0 million as tightening supplies in Russia make exports more competitive.
- **Pakistan** is raised 500,000 tons to 800,000 based on reports of sales to Southeast Asian countries.
- **Russia** is slashed 4.0 million tons to 8.0 million as dryness continues to affect the crop.
- **Turkey** is lowered 500,000 tons to 3.2 million on tight supplies due to a smaller crop.
- **Ukraine** is raised 2.0 million tons to 6.0 million due to a larger crop and tight supplies in Russia.

### **Selected Importers**

- **Egypt** is cut 500,000 tons to 9.5 million on ample stocks as a result of the high volume of imports at the close of 2011/12.
- **EU** is raised 500,000 tons to 6.0 million due to more feed-quality wheat supplies in Ukraine.
- **Morocco** is cut 500,000 tons to 4.5 million because of a larger crop and high carry-over stocks.
- **South Korea** is up 500,000 tons to 4.6 million on expectations of large feed-quality wheat purchases.
- **United States** is up 300,000 tons to 3.5 million on expected imports of feed-quality wheat.

- 
- **Vietnam** is boosted 500,000 tons to 2.5 million on anticipated purchases of feed-quality wheat.

## **TRADE CHANGES IN 2011/12**

### **Selected Exporters**

#### Large late-season adjustments reflect reported shipments

- **Argentina** is raised 450,000 tons to 12.0 million.
- **Australia** is boosted 500,000 tons to a record 23.0 million.
- **Russia** is up 300,000 tons to a record 21.6 million.
- **Ukraine** is raised 300,000 tons to 5.3 million.
- **Uruguay** is up 300,000 tons to a record 1.6 million.

### **Selected Importers**

- **Egypt** is up 400,000 tons to a record 11.6 million.
- **EU** is down 300,000 tons to 7.2 million.
- **Sudan** is raised 300,000 tons to 2.2 million.
- **Thailand** is raised 300,000 tons to a record 2.6 million.
- **Turkey** is up 600,000 tons to a record 4.4 million.

**World Wheat, Flour, and Products Trade**  
**July/June Year, Thousand Metric Tons**

	2008/09	2009/10	2010/11	2011/12	2012/13 Jul	2012/13 Aug
<b>TY Exports</b>						
Argentina	8,651	5,255	7,742	11,949	7,000	6,500
Australia	13,450	13,764	18,477	23,000	20,500	21,000
Canada	18,674	18,992	16,768	17,550	18,500	19,500
EU-27	25,351	22,115	22,906	16,400	16,000	17,000
India	21	62	74	1,150	5,000	5,000
Kazakhstan	5,701	7,871	5,519	10,500	7,000	7,000
Russia	18,393	18,556	3,983	21,600	12,000	8,000
Turkey	2,342	4,363	2,945	3,682	3,700	3,200
Ukraine	13,037	9,337	4,302	5,300	4,000	6,000
Uruguay	616	994	1,197	1,600	1,300	1,500
Others	10,210	10,082	13,838	10,736	8,050	9,450
<b>Subtotal</b>	116,446	111,391	97,751	123,467	103,050	104,150
<b>United States</b>	27,101	24,172	35,977	28,100	32,500	32,500
<b>World Total</b>	143,547	135,563	133,728	151,567	135,550	136,650
<b>TY Imports</b>						
Afghanistan	3,800	2,500	2,000	2,000	2,000	2,000
Algeria	6,356	5,167	6,436	6,250	5,200	5,000
Bangladesh	2,882	3,353	3,951	1,900	3,000	3,000
Brazil	6,767	6,694	6,746	7,052	7,000	7,000
China	481	1,394	927	2,933	2,000	2,000
Egypt	9,900	10,500	10,600	11,600	10,000	9,500
EU-27	7,737	5,519	4,727	7,200	5,500	6,000
Indonesia	5,419	5,364	6,607	6,400	6,600	6,600
Iraq	3,879	3,899	3,632	3,700	3,700	3,700
Israel	2,063	1,862	1,392	1,975	1,500	1,800
Japan	5,156	5,502	5,869	6,354	5,900	5,900
Korea, South	3,371	4,470	4,761	5,188	4,100	4,600
Mexico	3,342	3,196	3,462	5,100	4,100	4,200
Morocco	3,759	2,304	3,903	3,625	5,000	4,500
Nigeria	3,550	4,020	4,051	3,900	3,900	3,900
Peru	1,385	1,703	1,757	1,600	1,700	1,700
Philippines	3,201	3,188	3,271	4,050	3,200	3,200
Saudi Arabia	1,275	1,909	1,742	2,800	2,300	2,300
South Africa	1,472	1,358	1,627	1,600	1,500	1,500
Sudan	1,712	1,901	1,604	2,200	1,800	1,800
Thailand	1,128	1,600	1,919	2,600	2,000	2,000
Turkey	3,578	3,218	3,517	4,400	3,500	3,500
Venezuela	1,501	1,597	1,469	1,700	1,600	1,700
Vietnam	1,016	1,927	2,460	2,800	2,000	2,500
Yemen	2,796	2,602	2,845	2,700	2,700	2,700
Others	49,736	42,748	36,752	43,966	38,250	37,845
<b>Subtotal</b>	137,262	129,495	128,027	145,593	130,050	130,445
<b>Unaccounted</b>	2,886	2,882	3,130	2,874	2,300	2,705
<b>United States</b>	3,399	3,186	2,571	3,100	3,200	3,500
<b>World Total</b>	143,547	135,563	133,728	151,567	135,550	136,650

TY=Trade Year, see Endnotes.

**World Wheat Production, Consumption, and Stocks**  
**Local Marketing Years, Thousand Metric Tons**

	2008/09	2009/10	2010/11	2011/12	2012/13 Jul	2012/13 Aug
<b>Production</b>						
Argentina	11,000	12,000	16,700	15,000	12,000	11,500
Australia	21,420	21,834	27,891	29,500	26,000	26,000
Brazil	5,880	5,026	5,900	5,800	5,000	5,000
Canada	28,611	26,848	23,167	25,260	26,600	27,000
China	112,464	115,120	115,180	117,920	118,000	118,000
Egypt	7,977	8,523	7,200	8,400	8,500	8,500
EU-27	151,122	138,816	135,858	137,395	133,140	132,897
India	78,570	80,680	80,800	86,870	91,000	93,900
Iran	7,957	13,485	15,030	13,500	14,000	14,000
Kazakhstan	12,538	17,051	9,638	22,732	13,000	11,000
Pakistan	20,959	24,000	23,900	24,200	23,000	23,000
Russia	63,765	61,770	41,508	56,231	49,000	43,000
Turkey	16,800	18,450	17,000	18,800	16,500	15,750
Ukraine	25,885	20,866	16,844	22,124	13,000	15,000
Uzbekistan	6,000	6,200	6,500	6,300	6,300	6,700
Others	43,790	55,154	48,720	50,732	49,757	49,847
<b>Subtotal</b>	614,738	625,823	591,836	640,764	604,797	601,094
<b>United States</b>	68,016	60,366	60,062	54,413	60,529	61,732
<b>World Total</b>	682,754	686,189	651,898	695,177	665,326	662,826
<b>Total Consumption</b>						
Algeria	8,300	8,550	8,750	8,950	9,050	9,050
Brazil	10,700	11,000	10,800	11,200	11,000	11,000
Canada	7,977	6,927	7,689	10,400	7,850	7,850
China	105,500	107,000	110,500	120,500	122,000	122,000
Egypt	17,200	18,100	17,700	18,900	18,900	18,900
EU-27	127,000	125,000	122,000	126,500	123,750	124,500
India	70,924	78,150	81,760	81,555	85,450	86,900
Iran	15,800	16,800	16,200	15,500	15,000	15,000
Kazakhstan	7,500	7,600	6,200	8,000	7,500	7,500
Morocco	7,450	8,100	8,250	8,950	8,600	8,400
Pakistan	22,800	23,000	23,000	23,100	23,200	23,200
Russia	38,900	39,600	38,600	38,000	37,900	37,200
Turkey	16,900	17,100	17,300	18,100	17,600	17,500
Ukraine	11,900	12,300	11,600	14,950	11,700	12,300
Uzbekistan	7,100	7,500	7,700	8,000	7,700	7,700
Others	126,299	132,310	134,931	143,315	139,584	140,894
<b>Subtotal</b>	608,817	622,467	623,768	663,405	646,777	649,420
<b>United States</b>	34,293	30,978	30,710	32,153	33,284	33,829
<b>World Total</b>	643,110	653,445	654,478	695,558	680,061	683,249
<b>Ending Stocks</b>						
Australia	3,389	5,592	8,824	7,719	7,564	6,104
Canada	6,547	7,829	7,176	5,011	5,786	5,061
China	45,803	54,425	59,091	58,466	55,711	55,466
Egypt	4,857	5,605	5,508	6,358	5,408	5,258
EU-27	18,937	16,157	11,836	13,531	12,498	10,928
India	13,430	16,120	15,360	19,950	21,000	22,450
Russia	10,944	14,722	13,736	10,467	9,567	8,467
Others	46,034	53,550	52,975	55,876	46,844	44,439
<b>Subtotal</b>	149,941	174,000	174,506	177,378	164,378	158,173
<b>United States</b>	17,867	26,552	23,466	20,213	18,065	18,995
<b>World Total</b>	167,808	200,552	197,972	197,591	182,443	177,168



## Regional Wheat Imports, Production, Consumption, and Stocks

Thousand Metric Tons

	2008/09	2009/10	2010/11	2011/12	Jul 2012/13	Aug 2012/13
<b>TY Imports</b>						
North America	7,128	6,785	6,462	8,675	7,700	8,100
Central America	1,474	1,445	1,687	1,607	1,575	1,545
South America	13,097	13,173	13,004	13,773	13,490	13,540
European Union	7,737	5,519	4,727	7,200	5,500	6,000
Other Europe	1,712	1,696	1,654	1,935	1,785	1,760
Former Soviet Union - 12	6,569	5,415	5,658	7,525	6,160	5,835
Middle East	28,218	22,557	17,286	22,711	18,680	19,080
North Africa	23,472	21,592	24,180	24,450	23,100	21,900
Sub-Saharan Africa	14,174	16,388	15,259	17,845	15,965	15,845
East Asia	11,322	13,744	13,904	16,837	14,225	14,725
South Asia	10,771	7,608	7,619	5,235	6,410	6,410
Southeast Asia	12,324	13,902	16,334	17,885	15,760	16,260
Others	2,663	2,857	2,824	3,015	2,900	2,945
<b>Total</b>	<b>140,661</b>	<b>132,681</b>	<b>130,598</b>	<b>148,693</b>	<b>133,250</b>	<b>133,945</b>
<b>Production</b>						
North America	100,627	91,362	86,905	83,301	90,429	92,032
South America	20,516	22,039	27,296	25,471	21,984	21,484
European Union	151,122	138,816	135,858	137,395	133,140	132,897
Other Europe	4,710	4,646	3,865	4,359	4,059	4,249
Former Soviet Union - 12	115,486	114,047	81,061	114,423	88,560	82,960
Middle East	30,303	38,940	40,241	40,274	38,090	37,040
North Africa	14,352	20,261	15,933	18,425	16,775	16,975
Sub-Saharan Africa	6,066	6,142	5,243	6,082	5,991	5,991
East Asia	113,806	116,449	116,355	119,344	119,415	119,415
South Asia	103,898	111,200	110,792	116,140	120,420	123,320
Oceania	21,697	22,111	28,168	29,777	26,277	26,277
Others	171	176	181	186	186	186
<b>Total</b>	<b>682,754</b>	<b>686,189</b>	<b>651,898</b>	<b>695,177</b>	<b>665,326</b>	<b>662,826</b>
<b>Domestic Consumption</b>						
North America	48,270	44,205	44,849	50,403	47,934	48,479
South America	24,549	25,723	25,573	26,105	26,200	26,075
European Union	127,000	125,000	122,000	126,500	123,750	124,500
Other Europe	5,585	5,494	5,356	5,590	5,590	5,490
Former Soviet Union - 12	76,106	78,215	75,035	80,210	76,255	76,155
Middle East	52,587	54,441	54,964	56,560	54,205	54,505
North Africa	37,375	39,750	39,225	41,325	41,050	40,850
Sub-Saharan Africa	19,042	20,866	20,251	22,386	21,384	21,304
East Asia	117,218	120,187	124,082	135,255	135,700	136,200
South Asia	105,229	113,811	116,851	115,535	120,930	122,380
Southeast Asia	12,104	13,188	15,078	17,099	16,010	16,760
Oceania	8,115	5,840	7,065	7,835	7,815	7,775
Others	3,363	3,295	3,361	3,270	3,245	3,250
<b>Total</b>	<b>636,543</b>	<b>650,015</b>	<b>653,690</b>	<b>688,073</b>	<b>680,068</b>	<b>683,723</b>
<b>Ending Stocks</b>						
North America	24,729	34,901	31,029	25,789	24,491	24,721
South America	4,902	6,442	7,477	4,542	4,045	4,476
European Union	18,937	16,157	11,836	13,531	12,498	10,928
Other Europe	2,107	2,120	1,453	1,483	1,211	1,432
Former Soviet Union - 12	21,844	25,835	23,644	26,647	20,542	17,682
Middle East	11,635	14,010	12,720	12,108	11,758	11,308
North Africa	9,216	10,949	11,473	12,546	10,498	10,246
Sub-Saharan Africa	1,686	2,048	1,723	2,094	1,896	2,011
East Asia	48,636	57,260	61,999	61,435	58,590	57,870
South Asia	17,393	21,536	21,288	24,878	25,628	26,578
Southeast Asia	2,813	3,115	3,902	4,197	2,897	3,202
Oceania	3,596	5,773	9,056	7,988	7,840	6,375
Others	314	406	372	353	549	339
<b>Total</b>	<b>167,808</b>	<b>200,552</b>	<b>197,972</b>	<b>197,591</b>	<b>182,443</b>	<b>177,168</b>

NOTES: Regional definitions appear on last page of this circular. Imports are reported on a trade year basis. All other data are reported using local marketing years.

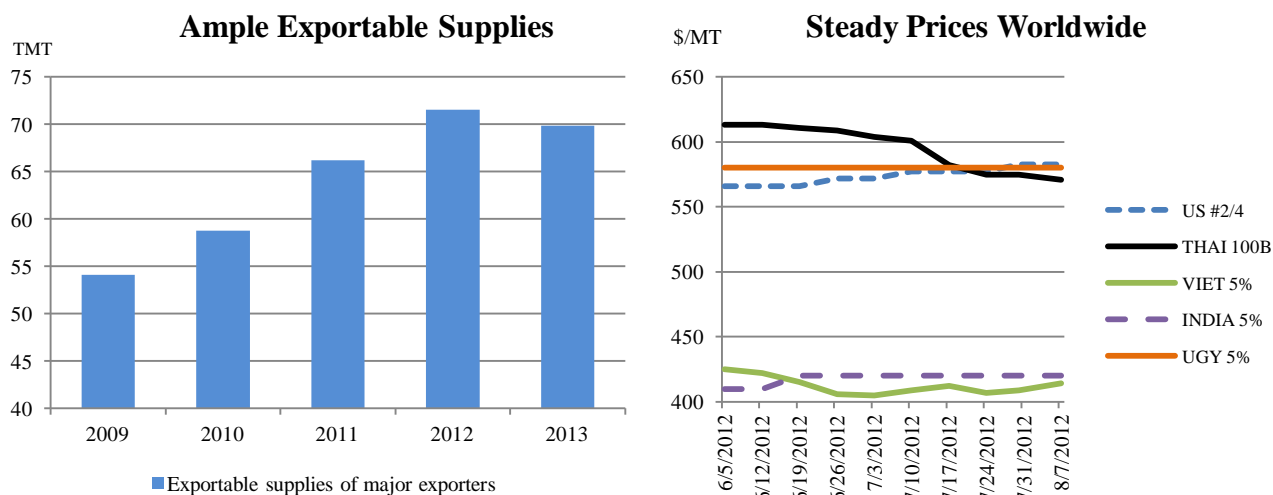
---

## RICE: WORLD MARKETS AND TRADE

### OVERVIEW

Global production in 2012/13 is reduced primarily due to a poor Indian monsoon. For the first time since 2006/07, global consumption is anticipated to outpace production, but ample supplies in major exporting countries are keeping prices in check. Trade in 2012/13 is forecast to drop marginally from 2011/12. U.S. production and exports are up year to year.

### FEATURE



Exportable supplies in major exporting countries (India, Mercosur members, Pakistan, Thailand, United States, and Vietnam) are expected to be abundant in 2012/13. This, combined with record exportable supplies in 2011/12, is keeping prices stable despite a relatively small U.S. crop and issues with the Indian monsoon. While rice quotes remain split in 2 tiers, they have changed little over the last 2 months. This is in sharp contrast to other commodities that have been more severely affected by the U.S. drought.

### SELECTED TRADE CHANGE

- **Brazil's** 2012 exports are boosted 100,000 tons to 1.0 million on pace, while 2013 is dropped 300,000 tons to 600,000 on tighter supplies.

**World Rice Trade**  
**January/December Year, Thousand Metric Tons**

	2008/09	2009/10	2010/11	2011/12	2012/13 Jul	2012/13 Aug
<b>TY Exports</b>						
Argentina	594	468	732	650	560	560
Australia	17	54	311	450	500	500
Brazil	591	430	1,296	1,000	900	600
Burma	1,052	445	778	600	750	750
Cambodia	820	750	860	800	950	950
China	783	619	487	500	600	600
Egypt	575	570	320	600	600	600
EU-27	150	282	241	245	235	235
Guyana	244	275	250	230	250	250
India	2,149	2,228	4,637	8,000	6,500	6,500
Japan	200	200	200	200	200	200
Pakistan	3,187	4,000	3,414	3,750	4,000	4,000
Thailand	8,570	9,047	10,647	6,500	8,000	8,000
Uruguay	926	808	841	850	850	850
Vietnam	5,950	6,734	7,000	7,000	7,000	7,000
Others	576	768	918	779	800	800
<b>Subtotal</b>	<b>26,384</b>	<b>27,678</b>	<b>32,932</b>	<b>32,154</b>	<b>32,695</b>	<b>32,395</b>
<b>United States</b>	<b>3,017</b>	<b>3,868</b>	<b>3,247</b>	<b>3,500</b>	<b>3,100</b>	<b>3,100</b>
<b>World Total</b>	<b>29,401</b>	<b>31,546</b>	<b>36,179</b>	<b>35,654</b>	<b>35,795</b>	<b>35,495</b>
<b>TY Imports</b>						
Bangladesh	146	660	1,483	400	600	600
Brazil	650	778	591	660	610	700
Cameroon	300	300	310	330	350	350
China	337	366	575	1,500	1,500	1,500
Cote d'Ivoire	800	840	935	950	950	950
Cuba	457	498	558	525	525	525
Egypt	20	15	76	800	750	750
EU-27	1,383	1,216	1,475	1,400	1,550	1,550
Ghana	410	320	545	400	400	400
Hong Kong	397	390	381	415	425	425
Indonesia	250	1,150	3,098	1,250	1,450	1,450
Iran	1,470	1,520	1,870	1,900	1,950	1,950
Iraq	1,089	1,188	1,036	1,200	1,200	1,200
Japan	750	649	697	700	700	700
Korea, South	241	320	532	600	400	400
Malaysia	1,086	907	1,076	1,085	1,050	1,050
Mexico	610	575	705	730	800	750
Mozambique	385	325	360	375	375	375
Nigeria	2,000	2,000	2,550	2,450	2,250	2,250
Philippines	2,000	2,400	1,200	1,500	1,500	1,500
Saudi Arabia	1,072	1,069	1,059	1,150	1,175	1,175
Senegal	715	685	805	820	820	820
South Africa	745	733	885	900	1,000	1,000
United Arab Emirates	380	400	420	430	440	440
Vietnam	500	400	500	400	400	400
Others	8,159	9,072	9,259	9,436	9,535	9,535
<b>Subtotal</b>	<b>26,352</b>	<b>28,776</b>	<b>32,981</b>	<b>32,306</b>	<b>32,705</b>	<b>32,745</b>
<b>Unaccounted</b>	<b>2,367</b>	<b>2,208</b>	<b>2,577</b>	<b>2,623</b>	<b>2,340</b>	<b>2,000</b>
<b>United States</b>	<b>682</b>	<b>562</b>	<b>621</b>	<b>725</b>	<b>750</b>	<b>750</b>
<b>World Total</b>	<b>29,401</b>	<b>31,546</b>	<b>36,179</b>	<b>35,654</b>	<b>35,795</b>	<b>35,495</b>

TY=Trade Year, see Endnotes.

Note about dates: 2012/13 is calendar year 2013, 2011/12 is calendar year 2012, and so on.

**World Rice Production, Consumption, and Stocks**  
**Local Marketing Years, Thousand Metric Tons**

	2008/09	2009/10	2010/11	2011/12	2012/13 Jul	2012/13 Aug
<b>Milled Production</b>						
Bangladesh	31,200	31,000	31,700	34,000	34,100	34,100
Brazil	8,570	7,929	9,300	7,820	8,670	7,820
Burma	11,200	11,642	10,528	10,816	11,000	11,000
Cambodia	3,992	4,056	4,233	4,268	4,500	4,500
China	134,330	136,570	137,000	140,700	141,000	142,000
Egypt	4,673	4,564	3,100	4,250	4,500	4,500
India	99,180	89,090	95,980	104,320	100,000	98,000
Indonesia	38,310	36,370	35,500	36,500	36,900	36,900
Japan	8,029	7,711	7,720	7,646	7,358	7,358
Korea, South	4,843	4,916	4,295	4,224	4,200	4,300
Pakistan	6,900	6,800	5,000	6,500	6,800	6,800
Philippines	10,755	9,772	10,539	10,639	10,800	10,800
Sri Lanka	2,227	2,650	2,490	3,311	3,200	3,200
Thailand	19,850	20,260	20,262	20,460	21,050	21,050
Vietnam	24,393	24,993	26,371	26,735	26,875	26,875
Others	33,693	35,816	37,755	36,973	38,039	37,959
<b>Subtotal</b>	<b>442,145</b>	<b>434,139</b>	<b>441,773</b>	<b>459,162</b>	<b>458,992</b>	<b>457,162</b>
<b>United States</b>	<b>6,546</b>	<b>7,133</b>	<b>7,593</b>	<b>5,874</b>	<b>6,086</b>	<b>6,053</b>
<b>World Total</b>	<b>448,691</b>	<b>441,272</b>	<b>449,366</b>	<b>465,036</b>	<b>465,078</b>	<b>463,215</b>
<b>Consumption and Residual</b>						
Bangladesh	31,200	31,600	32,400	34,500	35,000	35,000
Brazil	8,400	8,477	8,200	8,000	8,100	7,900
Burma	10,800	10,890	10,100	10,140	10,630	10,630
Cambodia	3,220	3,270	3,370	3,450	3,590	3,590
China	133,000	134,320	135,000	139,500	141,500	142,500
Egypt	4,270	3,940	3,300	4,070	4,300	4,300
India	91,090	85,508	90,206	93,820	96,000	95,000
Indonesia	37,100	38,000	39,000	39,550	39,700	40,000
Iran	3,100	3,150	3,250	3,400	3,500	3,500
Japan	8,326	8,200	8,200	8,050	7,970	7,970
Korea, South	4,789	4,701	5,175	4,977	4,800	4,800
Nigeria	4,220	4,580	5,030	5,200	5,150	5,150
Philippines	13,100	13,125	12,900	12,800	12,850	12,850
Thailand	9,500	10,200	10,300	10,400	10,600	10,600
Vietnam	19,000	19,150	19,400	19,750	20,100	20,100
Others	50,316	52,445	53,671	55,298	56,230	56,125
<b>Subtotal</b>	<b>433,058</b>	<b>434,478</b>	<b>441,631</b>	<b>454,901</b>	<b>462,784</b>	<b>462,455</b>
<b>United States</b>	<b>4,082</b>	<b>4,016</b>	<b>4,317</b>	<b>3,721</b>	<b>4,009</b>	<b>3,945</b>
<b>World Total</b>	<b>437,140</b>	<b>438,494</b>	<b>445,948</b>	<b>458,622</b>	<b>466,793</b>	<b>466,400</b>
<b>Ending Stocks</b>						
China	38,546	40,534	42,574	44,774	45,174	45,174
India	19,000	20,500	23,500	26,000	22,000	22,000
Indonesia	7,057	6,577	6,175	4,375	3,075	2,725
Japan	2,715	2,693	2,689	2,785	2,673	2,673
Philippines	4,673	3,520	2,459	1,798	1,248	1,248
Thailand	4,787	6,100	5,615	9,375	12,125	12,125
Vietnam	1,961	1,470	1,941	2,326	2,501	2,501
Others	12,678	12,594	12,123	12,508	12,755	12,467
<b>Subtotal</b>	<b>91,417</b>	<b>93,988</b>	<b>97,076</b>	<b>103,941</b>	<b>101,551</b>	<b>100,913</b>
<b>United States</b>	<b>977</b>	<b>1,184</b>	<b>1,514</b>	<b>1,063</b>	<b>923</b>	<b>906</b>
<b>World Total</b>	<b>92,394</b>	<b>95,172</b>	<b>98,590</b>	<b>105,004</b>	<b>102,474</b>	<b>101,819</b>

Note: All data are reported on a milled basis.

## Regional Rice Imports, Production, Consumption, and Stocks

Thousand Metric Tons

	2008/09	2009/10	2010/11	2011/12	Jul 2012/13	Aug 2012/13
<b>TY Imports</b>						
North America	1,614	1,495	1,654	1,795	1,890	1,840
Caribbean	906	989	1,099	1,015	1,015	1,015
South America	1,116	1,354	1,260	1,460	1,410	1,500
Other Europe	126	126	139	143	137	137
Former Soviet Union - 12	412	401	335	358	393	393
Middle East	5,349	5,808	5,974	6,130	6,190	6,190
North Africa	155	345	364	1,140	1,100	1,100
Sub-Saharan Africa	8,200	8,208	9,720	9,660	9,610	9,610
East Asia	1,873	1,960	2,399	3,460	3,255	3,255
South Asia	524	1,016	1,861	820	980	980
Southeast Asia	4,542	5,537	6,504	4,860	5,130	5,130
Others	2,217	2,099	2,293	2,190	2,345	2,345
<b>Total</b>	<b>27,034</b>	<b>29,338</b>	<b>33,602</b>	<b>33,031</b>	<b>33,455</b>	<b>33,495</b>
<b>Production</b>						
North America	6,707	7,315	7,739	5,999	6,214	6,206
Caribbean	833	954	938	992	992	992
South America	16,459	15,664	17,195	15,016	16,246	15,396
European Union	1,760	2,052	2,045	1,952	1,886	1,886
Former Soviet Union - 12	902	1,143	1,321	1,280	1,289	1,284
Middle East	2,075	2,049	2,123	2,169	2,182	2,182
North Africa	4,693	4,598	3,139	4,289	4,529	4,529
Sub-Saharan Africa	10,501	11,656	13,026	12,661	13,283	13,283
East Asia	150,087	152,218	151,801	155,345	155,319	156,319
South Asia	142,623	132,765	138,336	151,369	147,350	145,350
Southeast Asia	111,389	110,063	110,466	112,551	114,356	114,356
Others	662	795	1,237	1,413	1,432	1,432
<b>Total</b>	<b>448,691</b>	<b>441,272</b>	<b>449,366</b>	<b>465,036</b>	<b>465,078</b>	<b>463,215</b>
<b>Domestic Consumption</b>						
North America	5,177	5,160	5,417	4,959	5,269	5,205
Central America	1,094	1,110	1,099	1,161	1,136	1,136
Caribbean	1,784	1,892	2,035	2,006	2,006	2,006
South America	14,782	14,915	14,510	14,119	14,270	14,070
European Union	3,065	3,025	3,241	3,300	3,300	3,300
Former Soviet Union - 12	1,238	1,326	1,428	1,436	1,482	1,477
Middle East	7,627	7,756	8,109	8,260	8,455	8,455
North Africa	4,402	4,307	3,657	4,449	4,679	4,679
Sub-Saharan Africa	17,722	19,645	21,563	22,446	22,749	22,749
East Asia	149,585	150,739	151,733	155,922	157,701	158,601
South Asia	131,561	126,162	130,810	137,233	140,010	139,010
Southeast Asia	96,910	98,916	99,572	100,651	102,235	102,535
Others	566	619	645	684	737	737
<b>Total</b>	<b>435,513</b>	<b>435,572</b>	<b>443,819</b>	<b>456,626</b>	<b>464,029</b>	<b>463,960</b>
<b>Ending Stocks</b>						
North America	1,143	1,322	1,734	1,248	1,127	1,082
Central America	205	240	254	241	262	262
Caribbean	114	126	131	137	143	143
South America	2,230	1,859	2,060	1,317	1,860	1,500
European Union	1,020	1,120	1,056	1,013	914	914
Middle East	1,997	1,659	1,807	1,781	1,598	1,598
North Africa	564	498	122	502	852	852
Sub-Saharan Africa	1,017	1,046	1,337	1,122	1,126	1,126
East Asia	42,493	45,098	46,667	48,842	48,910	49,010
South Asia	21,523	22,561	25,542	28,998	25,308	25,308
Southeast Asia	19,934	19,441	17,653	19,511	20,112	19,762
Oceania	26	46	29	92	72	72
Others	128	156	198	200	190	190
<b>Total</b>	<b>92,394</b>	<b>95,172</b>	<b>98,590</b>	<b>105,004</b>	<b>102,474</b>	<b>101,819</b>

NOTES: Regional definitions appear on last page of this circular. Imports are reported on a trade year basis. All other data are reported using local marketing years.

---

## COARSE GRAINS: WORLD MARKETS AND TRADE

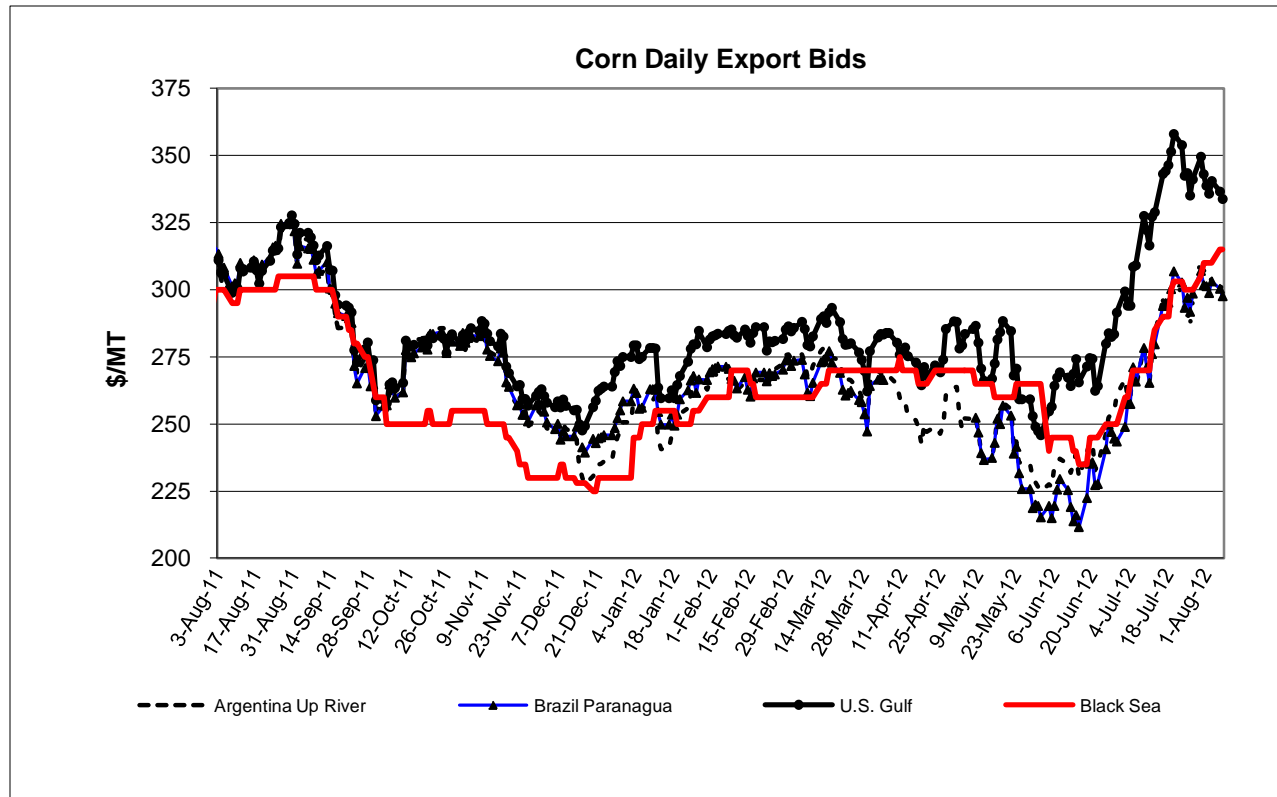
### OVERVIEW

Global corn trade for 2012/13 is cut sharply again this month because of drastically tighter exportable supplies in the United States outweighing record exportable supplies in South America. Unfavorable conditions also reduce Ukrainian, Serbian, and EU corn production and trade. U.S. corn exports are expected to be the lowest in almost two decades. The 2012/13 season-average farm price is projected sharply higher (nearly 40 percent) at a record. U.S. exports are also lowered for 2011/12.

### PRICES

U.S. corn export quotes continued to soar (gaining over \$40/ton) following the release of USDA's July report, finally peaking at nearly \$360/ton. Since that time, however, quotes have dropped almost \$25/ton to \$334 in early August on slow sales and shipments and as logistical problems (low river levels) continue to hamper trade.

South American quotes have moved in tandem with U.S. corn. Black Sea corn prices, however, have moved closer to U.S. corn (higher) as hot, dry conditions have reduced the Ukrainian crop.



---

Grain: World Markets and Trade, August 2012

---

## **TRADE CHANGES IN 2012/13**

### **Selected Exporters**

- **U.S. corn** exports are slashed by 6.5 million tons to 33.5 million, the lowest since 1993/94, based on sharply lower crop prospects following prolonged heat and dryness in key growing areas. Since June, U.S. exports have been cut a total of 14.5 million tons.

Based on the huge cut in U.S. corn exports, the following changes are made:

- **Argentine corn** is raised 2.0 million tons to a record 17.5 million based on prospects for a record crop in 2013.
- **Brazilian corn** is boosted 500,000 tons to a new record 13.0 million with expectations of a near-record crop (following record production in 2011/12).
- **Canadian corn** is raised 200,000 tons to 1.0 million.
- **South African corn** is up 300,000 tons to 2.3 million with expectations of a record crop in 2013 with expanded area.
- Dryness in key growing areas of Eastern Europe reduces exportable supplies of corn and exports are cut a combined 3.0 million tons: **Ukraine** (1.5 million tons), **EU** (1.0 million tons), and **Serbia** (500,000 tons).
- **Kazakh barley** is halved to 200,000 tons on reduced crop prospects.
- **U.S. sorghum** is cut sharply by 1.0 million tons to 2.5 million because of reduced exportable supplies caused by hot, dry conditions in the southern and central Plains.

### **Selected Importers**

- **U.S. corn** is more than doubled to a record 1.9 million tons because of extreme drought conditions, likely shortages of domestically produced seed corn next season, and indications of competitive imports from South America (and possibly Europe).

Based on the substantial cut to U.S. corn exports, a number of offsetting import changes are made:

- **Chinese corn** is cut 3.0 million tons to 2.0 million with improved domestic crop prospects and higher U.S. prices.
- **EU corn** is lowered 2.0 million tons to 3.0 million, despite a sharply lower crop, because of tightening exportable supplies out of Serbia and Ukraine.
- **Indonesian, Japanese, Korean, Mexican, and Vietnamese corn** are each cut 500,000 tons.

- 
- **Colombian, Israeli, Peruvian, and Syrian corn** are lowered a combined 1.0 million tons.
  - **Algerian barley** is cut 200,000 tons to 100,000 on improved crop prospects.
  - **U.S. barley** is boosted 200,000 tons to 500,000 to substitute for corn and reduced supplies of distillers' dried grains in feed rations.
  - **Mexican sorghum** is down 1.0 million tons to 2.0 million because of reduced exportable supplies in the United States.

## TRADE CHANGES IN 2011/12

### **Selected Exporters**

- **U.S. corn** is cut 1.0 million tons to 39.0 million as slow sales and shipments continue and drought conditions affect barge traffic on the Mississippi River.
- **Argentine corn** is boosted by 1.5 million tons to 16.0 million based on sharply higher carryin stocks as surveyed by the government, expectations of additional export licenses being granted, and near-record shipments from March through July.
- Based on trade data, **Ukrainian corn** is raised 500,000 tons to 14.5 million and **South African corn** is up 200,000 tons to 1.7 million.
- **Australian barley** is boosted 500,000 tons to 5.0 million on the strong pace of shipments.
- **EU barley** is cut 400,000 tons to 2.4 million as a result of lower-than-expected new-crop production and tighter stocks.

### **Selected Importers**

- **Egyptian and South Korean corn** are each raised 500,000 tons because of higher-than-expected shipments in recent months.
- **Indonesian and Syrian corn** are cut a combined 800,000 tons because of slower-than-expected shipments.
- **Mexican corn** is boosted 700,000 tons to 11.2 million because of tight supplies arising from a smaller crop in 2011/12.
- **Chinese barley** is up 200,000 tons to 2.2 million on strong demand for malting barley.
- **Russian barley** is doubled to 400,000 tons to fulfill malting needs.



**World Coarse Grain Trade**  
**October/September Year, Thousand Metric Tons**

	2008/09	2009/10	2010/11	2011/12	2012/13 Jul	2012/13 Aug
<b>TY Exports</b>						
Argentina	10,249	19,030	18,628	21,205	21,905	23,905
Australia	4,873	4,414	4,899	6,385	5,325	5,325
Brazil	7,187	8,627	11,592	11,005	12,505	13,005
Canada	3,852	3,068	4,427	3,625	3,650	4,050
EU-27	4,338	4,267	5,860	5,830	4,580	3,580
India	2,642	2,072	3,437	3,850	2,575	2,550
Paraguay	1,864	1,392	1,203	1,705	1,505	1,505
Russia	4,945	2,528	1,028	5,665	3,605	3,555
South Africa	2,159	1,634	2,859	1,720	2,020	2,320
Ukraine	11,380	10,936	7,456	16,810	16,010	14,510
Others	5,639	7,113	5,516	6,317	6,245	5,445
<b>Subtotal</b>	59,128	65,081	66,905	84,117	79,925	79,750
<b>United States</b>	51,558	53,989	49,292	40,593	43,745	36,245
<b>World Total</b>	110,686	119,070	116,197	124,710	123,670	115,995
<b>TY Imports</b>						
Algeria	2,067	2,576	2,945	3,500	3,200	2,900
Brazil	1,497	1,049	633	1,455	1,155	1,155
Chile	1,317	1,275	1,271	1,350	1,300	1,300
China	1,651	3,777	2,697	7,260	7,260	4,260
Colombia	3,483	4,102	4,148	4,255	4,255	4,055
Dominican Republic	973	1,071	1,001	1,050	1,100	1,100
Egypt	5,093	5,897	5,839	5,585	5,275	5,275
EU-27	2,988	3,012	8,609	6,880	5,555	3,555
Indonesia	317	1,321	3,041	1,500	2,000	1,500
Iran	5,000	5,100	4,000	4,700	3,800	3,800
Israel	1,295	1,592	1,446	1,385	1,785	1,435
Japan	19,611	19,198	18,590	17,835	18,410	17,910
Jordan	785	713	923	1,100	900	900
Korea, South	7,248	8,509	8,168	7,560	8,060	7,560
Malaysia	2,447	3,107	2,809	3,100	3,100	3,100
Mexico	10,465	10,913	10,767	12,550	12,225	10,725
Morocco	1,833	2,194	2,059	2,505	2,825	2,825
Peru	1,520	1,886	2,079	2,100	2,225	2,025
Saudi Arabia	9,186	9,076	8,138	9,505	9,105	9,105
Syria	2,834	2,274	1,959	1,600	1,800	1,600
Taiwan	4,658	4,663	4,327	4,350	4,450	4,450
Tunisia	875	1,202	958	1,100	1,050	1,050
Turkey	687	683	500	570	1,055	1,055
Venezuela	1,340	2,198	1,251	1,700	1,700	1,700
Vietnam	1,250	1,600	1,000	1,200	1,500	1,000
Others	14,932	14,864	13,531	13,217	13,025	13,200
<b>Subtotal</b>	105,352	113,852	112,689	118,912	118,115	108,540
<b>Unaccounted</b>	2,527	2,943	1,058	2,995	2,755	3,305
<b>United States</b>	2,807	2,275	2,450	2,803	2,800	4,150
<b>World Total</b>	110,686	119,070	116,197	124,710	123,670	115,995

TY=Trade Year, see Endnotes.

**World Coarse Grains Production, Consumption, and Stocks**  
**Local Marketing Years, Thousand Metric Tons**

	2008/09	2009/10	2010/11	2011/12	2012/13 Jul	2012/13 Aug
<b>Production</b>						
Argentina	19,634	30,231	33,258	29,705	35,652	39,052
Australia	12,282	10,920	11,762	13,227	12,577	12,577
Brazil	53,486	58,412	60,380	75,633	70,433	73,433
Canada	27,184	22,477	22,263	21,866	24,984	24,734
China	172,391	169,775	183,398	199,660	202,010	207,010
Ethiopia	9,034	8,046	10,469	11,435	10,930	10,930
EU-27	162,102	155,038	140,245	146,706	149,557	145,205
India	39,550	33,890	43,370	42,060	42,850	38,010
Indonesia	8,700	6,900	6,800	8,900	8,500	8,500
Mexico	32,252	27,254	29,335	25,028	28,478	28,978
Nigeria	26,670	23,250	23,250	23,800	24,010	24,010
Russia	40,881	31,843	16,416	32,796	31,750	29,650
South Africa	13,084	13,881	11,321	11,982	13,451	13,951
Turkey	10,408	11,176	10,185	11,275	10,475	10,175
Ukraine	26,275	24,143	21,442	33,336	31,300	29,100
Others	132,955	136,613	143,816	137,924	142,731	140,051
<b>Subtotal</b>	<b>786,888</b>	<b>763,849</b>	<b>767,710</b>	<b>825,333</b>	<b>839,688</b>	<b>835,366</b>
<b>United States</b>	<b>325,867</b>	<b>348,755</b>	<b>330,236</b>	<b>323,697</b>	<b>343,946</b>	<b>286,049</b>
<b>World Total</b>	<b>1,112,755</b>	<b>1,112,604</b>	<b>1,097,946</b>	<b>1,149,030</b>	<b>1,183,634</b>	<b>1,121,415</b>
<b>Domestic Consumption</b>						
Argentina	8,768	10,054	11,383	11,570	12,752	13,302
Brazil	48,191	49,714	52,733	57,248	59,688	59,688
Canada	22,892	22,216	20,908	20,036	21,874	21,424
China	161,062	173,151	188,175	196,755	210,055	210,055
Egypt	12,162	13,072	13,595	12,150	12,150	12,350
Ethiopia	9,033	8,543	9,925	11,260	10,882	10,882
EU-27	151,855	150,080	152,000	149,810	152,885	148,985
India	36,500	32,000	38,850	38,350	40,300	36,580
Japan	19,965	19,645	18,875	18,066	18,615	18,115
Mexico	42,060	40,865	39,535	38,640	40,140	39,340
Nigeria	26,550	23,050	23,200	23,750	24,000	24,000
Russia	33,011	30,440	18,131	27,478	28,150	26,600
South Africa	10,468	10,833	11,213	11,208	11,598	11,598
Turkey	10,700	10,865	11,075	11,625	11,675	11,375
Ukraine	13,696	12,964	13,742	15,350	15,400	15,250
Others	196,798	200,257	208,293	204,996	212,132	208,807
<b>Subtotal</b>	<b>806,075</b>	<b>815,120</b>	<b>832,109</b>	<b>856,668</b>	<b>886,204</b>	<b>873,863</b>
<b>United States</b>	<b>275,978</b>	<b>295,337</b>	<b>297,949</b>	<b>289,010</b>	<b>294,702</b>	<b>263,949</b>
<b>World Total</b>	<b>1,082,053</b>	<b>1,110,457</b>	<b>1,130,058</b>	<b>1,145,678</b>	<b>1,180,906</b>	<b>1,137,812</b>
<b>Ending Stocks</b>						
Argentina	1,698	3,124	5,334	2,379	2,234	3,034
Brazil	12,450	10,287	10,635	16,170	13,265	17,065
Canada	6,326	5,650	3,539	2,799	3,129	2,629
China	52,206	52,402	50,134	60,109	59,039	61,039
EU-27	20,844	25,854	16,409	13,805	10,949	10,000
Saudi Arabia	2,548	2,454	1,650	2,600	2,550	2,550
South Africa	4,327	5,367	3,591	2,955	2,893	2,893
Others	47,678	44,013	41,592	38,968	38,042	33,680
<b>Subtotal</b>	<b>148,077</b>	<b>149,151</b>	<b>132,884</b>	<b>139,785</b>	<b>132,101</b>	<b>132,890</b>
<b>United States</b>	<b>47,060</b>	<b>48,133</b>	<b>32,288</b>	<b>28,739</b>	<b>33,387</b>	<b>19,237</b>
<b>World Total</b>	<b>195,137</b>	<b>197,284</b>	<b>165,172</b>	<b>168,524</b>	<b>165,488</b>	<b>152,127</b>

## Regional Coarse Grains Imports, Production, Consumption, and Stocks

Thousand Metric Tons

	2008/09	2009/10	2010/11	2011/12	Jul 2012/13	Aug 2012/13
<b>TY Imports</b>						
North America	15,172	15,199	14,262	16,218	15,595	15,445
Central America	2,491	2,537	2,900	2,925	3,050	3,050
Caribbean	2,011	2,139	2,169	2,280	2,325	2,325
South America	9,745	11,108	10,479	11,550	11,480	11,080
European Union	2,988	3,012	8,609	6,880	5,555	3,555
Former Soviet Union - 12	664	456	1,184	880	895	895
Middle East	21,247	21,318	18,734	20,535	20,245	19,695
North Africa	10,592	13,107	12,344	13,390	13,000	12,800
Sub-Saharan Africa	3,745	3,328	2,028	2,640	2,485	2,485
East Asia	33,349	36,276	33,928	37,135	38,310	34,310
Southeast Asia	5,405	6,725	7,558	6,460	7,115	6,115
Others	750	922	944	822	860	935
<b>Total</b>	<b>108,159</b>	<b>116,127</b>	<b>115,139</b>	<b>121,715</b>	<b>120,915</b>	<b>112,690</b>
<b>Production</b>						
North America	385,303	398,486	381,834	370,591	397,408	339,761
South America	84,977	100,605	105,355	117,193	118,960	125,360
European Union	162,102	155,038	140,245	146,706	149,557	145,205
Other Europe	12,273	11,787	12,139	11,463	12,257	10,152
Former Soviet Union - 12	78,966	67,580	47,573	78,963	75,326	70,326
Middle East	16,046	18,950	18,746	19,036	18,371	18,071
North Africa	10,218	14,890	12,358	11,221	10,581	10,781
Sub-Saharan Africa	97,761	92,286	101,031	96,156	100,206	100,706
East Asia	174,467	171,531	185,291	201,621	203,994	208,919
South Asia	45,688	40,281	49,729	48,343	49,208	44,368
Southeast Asia	27,734	25,451	26,934	29,561	30,240	30,240
Oceania	12,929	11,567	12,409	13,874	13,224	13,224
Others	4,291	4,152	4,302	4,302	4,302	4,302
<b>Total</b>	<b>1,112,755</b>	<b>1,112,604</b>	<b>1,097,946</b>	<b>1,149,030</b>	<b>1,183,634</b>	<b>1,121,415</b>
<b>Domestic Consumption</b>						
North America	340,930	358,418	358,392	347,686	356,716	324,713
South America	75,990	79,414	84,765	89,188	93,715	94,065
European Union	151,855	150,080	152,000	149,810	152,885	148,985
Other Europe	10,845	10,752	10,798	10,612	10,774	9,974
Former Soviet Union - 12	58,063	54,955	41,922	54,576	55,141	53,141
Middle East	38,003	38,699	38,285	38,884	39,529	38,679
North Africa	21,187	24,679	25,607	24,640	23,760	23,960
Sub-Saharan Africa	97,288	92,122	100,309	97,146	100,509	100,509
East Asia	195,705	207,653	221,586	228,762	243,101	242,026
South Asia	42,673	38,549	45,329	44,768	46,693	42,973
Southeast Asia	30,300	31,175	33,692	34,145	36,450	35,550
Oceania	7,897	7,702	7,649	7,577	8,002	8,002
Others	8,953	8,888	9,248	9,508	9,723	9,723
<b>Total</b>	<b>1,079,689</b>	<b>1,103,086</b>	<b>1,129,582</b>	<b>1,137,302</b>	<b>1,176,998</b>	<b>1,132,300</b>
<b>Ending Stocks</b>						
North America	58,626	55,725	38,223	32,887	38,800	23,553
South America	16,796	16,702	18,401	20,840	17,593	22,095
European Union	20,844	25,854	16,409	13,805	10,949	10,000
Other Europe	1,538	1,669	1,658	1,188	1,611	821
Former Soviet Union - 12	9,318	7,371	5,505	6,320	6,685	5,570
Middle East	8,540	9,325	7,586	8,213	7,110	7,110
North Africa	2,741	5,387	4,908	4,604	4,200	4,200
Sub-Saharan Africa	10,079	10,757	10,420	8,884	7,811	7,811
East Asia	55,936	55,885	53,353	63,157	62,072	64,075
South Asia	2,086	1,670	2,592	2,247	1,987	1,122
Southeast Asia	4,448	3,379	3,516	3,907	3,977	3,577
Oceania	3,352	2,785	1,787	1,709	2,006	1,506
Others	833	775	814	763	687	687
<b>Total</b>	<b>195,137</b>	<b>197,284</b>	<b>165,172</b>	<b>168,524</b>	<b>165,488</b>	<b>152,127</b>

NOTES: Regional definitions appear on last page of this circular. Imports are reported on a trade year basis. All other data are reported using local marketing years.

**World Corn Trade**  
**October/September Year, Thousand Metric Tons**

	2008/09	2009/10	2010/11	2011/12	2012/13 Jul	2012/13 Aug
<b>TY Exports</b>						
Argentina	8,466	16,973	15,198	16,000	15,500	17,500
Brazil	7,178	8,623	11,583	11,000	12,500	13,000
Canada	366	184	1,657	500	800	1,000
EU-27	1,743	1,519	1,078	3,200	2,000	1,000
India	2,551	1,917	3,376	3,800	2,500	2,500
Paraguay	1,862	1,388	1,203	1,700	1,500	1,500
Russia	1,331	427	37	2,200	1,500	1,500
Serbia	1,467	1,343	2,004	1,800	1,800	1,300
South Africa	2,111	1,586	2,839	1,700	2,000	2,300
Ukraine	5,497	5,072	5,008	14,500	14,000	12,500
Others	3,644	4,236	2,661	3,100	3,360	3,260
<b>Subtotal</b>	36,216	43,268	46,644	59,500	57,460	57,360
<b>United States</b>	47,758	49,721	45,244	39,000	40,000	33,500
<b>World Total</b>	83,974	92,989	91,888	98,500	97,460	90,860
<b>TY Imports</b>						
Algeria	1,903	2,569	2,683	2,900	2,900	2,800
Brazil	1,092	699	287	1,100	800	800
China	47	1,296	979	5,000	5,000	2,000
Colombia	3,068	3,651	3,504	3,700	3,700	3,500
Costa Rica	586	626	663	700	750	750
Cuba	708	736	812	850	850	850
Dominican Republic	973	1,071	1,001	1,050	1,100	1,100
Egypt	5,031	5,832	5,803	5,500	5,200	5,200
EU-27	2,754	2,931	7,359	6,300	5,000	3,000
Indonesia	317	1,321	3,041	1,500	2,000	1,500
Iran	3,600	4,300	3,500	3,600	3,500	3,500
Israel	846	1,053	1,029	1,000	1,550	1,200
Japan	16,533	15,979	15,648	15,000	15,500	15,000
Korea, South	7,188	8,461	8,107	7,500	8,000	7,500
Malaysia	2,447	3,107	2,809	3,100	3,100	3,100
Mexico	7,764	8,298	8,257	11,200	9,000	8,500
Morocco	1,566	1,802	1,738	1,800	1,900	1,900
Peru	1,429	1,782	1,939	2,000	2,100	1,900
Saudi Arabia	1,482	1,872	1,933	2,000	2,100	2,100
Syria	1,784	2,024	1,659	1,300	1,700	1,500
Taiwan	4,532	4,521	4,183	4,200	4,300	4,300
Tunisia	646	866	677	800	900	900
Turkey	516	527	456	500	1,000	1,000
Venezuela	1,336	2,198	1,251	1,700	1,700	1,700
Vietnam	1,250	1,600	1,000	1,200	1,500	1,000
Others	12,456	11,459	9,924	10,177	9,835	10,010
<b>Subtotal</b>	81,854	90,581	90,242	95,677	94,985	86,610
<b>Unaccounted</b>	1,783	2,171	962	2,173	1,725	2,350
<b>United States</b>	337	237	684	650	750	1,900
<b>World Total</b>	83,974	92,989	91,888	98,500	97,460	90,860

TY=Trade Year, see Endnotes.

**World Corn Production, Consumption, and Stocks**  
**Local Marketing Years, Thousand Metric Tons**

	2008/09	2009/10	2010/11	2011/12	2012/13 Jul	2012/13 Aug
<b>Production</b>						
Argentina	15,500	25,000	25,200	21,000	25,000	28,000
Brazil	51,000	56,100	57,400	72,800	67,000	70,000
Canada	10,592	9,561	11,714	10,700	13,000	12,750
China	165,914	163,974	177,245	192,780	195,000	200,000
Egypt	6,645	6,280	6,500	5,500	5,800	5,800
EU-27	62,321	56,947	55,934	65,403	65,472	61,542
India	19,730	16,720	21,730	21,570	22,000	20,000
Indonesia	8,700	6,900	6,800	8,900	8,500	8,500
Mexico	24,226	20,374	21,058	18,100	21,000	21,500
Nigeria	7,970	8,950	8,800	9,250	9,410	9,410
Philippines	6,853	6,231	7,271	7,139	7,200	7,200
Russia	6,682	3,963	3,075	6,680	7,800	7,000
Serbia	6,130	6,400	6,800	6,300	7,000	5,500
South Africa	12,567	13,420	10,924	11,500	13,000	13,500
Ukraine	11,447	10,486	11,919	22,838	24,000	21,000
Others	77,741	77,209	82,232	82,466	84,590	83,515
<b>Subtotal</b>	494,018	488,515	514,602	562,926	575,772	575,217
<b>United States</b>	307,142	332,549	316,165	313,918	329,453	273,789
<b>World Total</b>	801,160	821,064	830,767	876,844	905,225	849,006
<b>Total Consumption</b>						
Argentina	6,400	6,900	7,300	7,700	8,600	8,800
Brazil	45,500	47,000	49,500	54,000	56,000	56,000
Canada	11,687	11,606	11,434	11,100	12,800	12,500
China	153,000	165,000	180,000	188,000	201,000	201,000
Egypt	11,100	12,000	12,500	11,000	11,000	11,200
EU-27	61,600	59,300	62,500	67,300	69,500	65,500
India	17,000	15,100	18,100	17,600	19,200	18,000
Indonesia	8,900	8,800	9,800	10,000	10,400	10,000
Japan	16,700	16,300	15,700	15,000	15,500	15,000
Korea, South	7,894	8,382	8,214	7,700	8,100	7,600
Mexico	32,400	30,200	29,200	29,700	29,700	29,700
Nigeria	7,900	8,800	8,800	9,250	9,450	9,450
Philippines	7,300	6,500	7,200	7,300	7,400	7,400
South Africa	9,900	10,300	10,650	10,700	11,100	11,100
Ukraine	5,850	5,700	6,500	8,300	9,300	8,500
Others	120,387	123,360	127,824	129,739	136,440	133,515
<b>Subtotal</b>	525,365	541,923	564,060	590,459	618,045	609,532
<b>United States</b>	259,272	281,590	285,014	277,889	282,461	252,106
<b>World Total</b>	784,637	823,513	849,074	868,348	900,506	861,638
<b>Ending Stocks</b>						
Argentina	970	2,573	4,130	1,440	1,550	2,150
Brazil	12,084	9,989	10,276	15,876	12,876	16,676
China	51,183	51,302	49,415	59,095	57,895	59,895
EU-27	6,149	5,208	4,923	6,126	4,231	4,168
Korea, South	1,466	1,622	1,589	1,463	1,438	1,441
Mexico	3,559	1,389	1,417	1,007	1,630	1,282
South Africa	4,113	5,169	3,418	2,743	2,668	2,668
Others	26,198	25,145	23,658	22,280	21,754	18,552
<b>Subtotal</b>	105,722	102,397	98,826	110,030	104,042	106,832
<b>United States</b>	42,504	43,380	28,644	25,936	30,051	16,502
<b>World Total</b>	148,226	145,777	127,470	135,966	134,093	123,334

## Regional Corn Imports, Production, Consumption, and Stocks

Thousand Metric Tons

	2008/09	2009/10	2010/11	2011/12	Jul 2012/13	Aug 2012/13
<b>TY Imports</b>						
North America	9,945	10,496	9,915	12,650	10,250	10,900
Central America	2,491	2,537	2,889	2,925	3,050	3,050
South America	8,238	9,469	8,336	9,715	9,665	9,265
European Union	2,754	2,931	7,359	6,300	5,000	3,000
Former Soviet Union - 12	393	259	324	260	240	240
Middle East	9,462	11,215	9,945	9,925	11,500	10,950
North Africa	9,574	11,725	11,265	11,500	11,350	11,350
Sub-Saharan Africa	2,915	2,376	1,537	1,945	1,750	1,750
East Asia	28,481	30,386	29,063	31,830	32,930	28,930
Southeast Asia	5,391	6,709	7,541	6,450	7,100	6,100
Caribbean	2,011	2,139	2,169	2,280	2,325	2,325
Others	536	576	583	547	575	650
<b>Total</b>	<b>82,191</b>	<b>90,818</b>	<b>90,926</b>	<b>96,327</b>	<b>95,735</b>	<b>88,510</b>
<b>Production</b>						
North America	341,960	362,484	348,937	342,718	363,453	308,039
South America	76,109	91,067	92,423	103,670	102,605	108,605
European Union	62,321	56,947	55,934	65,403	65,472	61,542
Other Europe	9,951	9,674	10,094	9,494	10,294	8,194
Former Soviet Union - 12	21,741	17,690	18,493	33,688	36,260	32,060
Middle East	6,748	6,305	6,039	5,968	6,393	6,393
North Africa	6,846	6,481	6,701	5,701	6,001	6,001
Sub-Saharan Africa	51,226	53,837	55,413	55,436	56,639	57,139
East Asia	167,580	165,379	178,872	194,418	196,651	201,576
South Asia	24,780	21,790	26,801	26,640	27,070	25,070
Central America	3,222	3,041	3,188	3,188	3,188	3,188
Southeast Asia	27,485	25,212	26,692	29,321	30,000	30,000
Others	1,191	1,157	1,180	1,199	1,199	1,199
<b>Total</b>	<b>801,160</b>	<b>821,064</b>	<b>830,767</b>	<b>876,844</b>	<b>905,225</b>	<b>849,006</b>
<b>Domestic Consumption</b>						
North America	303,359	323,396	325,648	318,689	324,961	294,306
South America	67,529	70,189	73,948	78,745	82,345	82,345
European Union	61,600	59,300	62,500	67,300	69,500	65,500
Other Europe	8,376	8,354	8,454	8,380	8,585	7,785
Former Soviet Union - 12	14,455	12,915	13,260	16,760	19,560	17,960
Middle East	16,005	16,885	16,885	16,685	18,385	17,835
North Africa	16,125	17,650	18,525	17,375	17,325	17,525
Sub-Saharan Africa	50,198	52,200	55,112	55,549	56,450	56,450
East Asia	184,015	195,811	209,905	216,580	230,580	229,505
South Asia	22,050	20,270	23,271	22,770	24,270	23,070
Southeast Asia	30,043	30,943	33,443	33,900	36,200	35,300
Central America	5,800	5,700	5,925	6,125	6,250	6,250
Others	3,235	3,225	3,360	3,420	3,540	3,540
<b>Total</b>	<b>782,790</b>	<b>816,838</b>	<b>850,236</b>	<b>862,278</b>	<b>897,951</b>	<b>857,371</b>
<b>Ending Stocks</b>						
North America	47,896	46,527	31,339	28,321	33,259	18,912
South America	15,426	15,613	16,533	19,323	16,145	20,453
European Union	6,149	5,208	4,923	6,126	4,231	4,168
Other Europe	1,198	1,372	1,359	930	1,349	564
Former Soviet Union - 12	2,086	1,536	1,888	2,061	3,031	1,986
Middle East	4,073	4,439	3,551	2,724	2,192	2,192
North Africa	2,200	2,391	2,156	1,972	1,688	1,788
Sub-Saharan Africa	8,088	9,413	8,292	7,184	6,063	6,063
East Asia	54,297	54,100	52,014	61,582	60,380	62,383
South Asia	1,498	992	1,078	1,043	1,068	538
Southeast Asia	4,443	3,376	3,512	3,903	3,973	3,573
Central America	613	498	580	528	496	496
Others	259	312	245	269	218	218
<b>Total</b>	<b>148,226</b>	<b>145,777</b>	<b>127,470</b>	<b>135,966</b>	<b>134,093</b>	<b>123,334</b>

NOTES: Regional definitions appear on last page of this circular. Imports are reported on a trade year basis. All other data are reported using local marketing years.

**World Barley Trade (Working Statistics)**  
**October/September Year, Thousand Metric Tons**

	2008/09	2009/10	2010/11	2011/12	2012/13 Jul	2012/13 Aug
<b>TY Exports</b>						
Argentina	871	549	1,531	3,400	4,200	4,200
Australia	3,278	3,846	4,088	5,000	4,100	4,100
Canada	1,618	1,203	1,052	1,400	1,100	1,200
China	17	13	9	15	10	10
Croatia	4	7	4	5	5	5
Egypt	7	14	5	10	10	10
EU-27	2,374	2,389	4,594	2,400	2,400	2,400
India	37	31	30	25	25	25
Kazakhstan	314	354	224	800	400	200
Kenya	1	2	5	5	5	5
Moldova	31	43	7	25	50	50
Russia	3,598	2,086	969	3,200	2,000	2,000
Serbia	11	22	9	5	10	10
Turkey	3	801	50	150	150	150
Ukraine	5,871	5,752	2,446	2,300	2,000	2,000
Others	10	24	3	0	0	0
<b>Subtotal</b>	<b>18,045</b>	<b>17,136</b>	<b>15,026</b>	<b>18,740</b>	<b>16,465</b>	<b>16,365</b>
<b>United States</b>	<b>158</b>	<b>152</b>	<b>181</b>	<b>150</b>	<b>200</b>	<b>200</b>
<b>World Total</b>	<b>18,203</b>	<b>17,288</b>	<b>15,207</b>	<b>18,890</b>	<b>16,665</b>	<b>16,565</b>
<b>TY Imports</b>						
Brazil	403	346	345	350	350	350
China	1,551	2,341	1,656	2,200	2,200	2,200
Colombia	211	237	251	250	250	250
EU-27	156	66	286	350	200	200
Iran	1,400	800	500	1,100	300	300
Israel	367	491	287	350	200	200
Japan	1,346	1,411	1,359	1,300	1,300	1,300
Jordan	514	432	550	700	500	500
Kuwait	252	283	317	250	250	250
Libya	296	582	179	200	200	200
Mexico	123	42	26	75	150	150
Morocco	263	248	222	700	800	800
Russia	39	13	411	400	400	400
Saudi Arabia	7,700	7,200	6,200	7,500	7,000	7,000
United Arab Emirates	131	299	330	200	200	200
Others	2,557	1,679	2,108	2,290	1,675	1,475
<b>Subtotal</b>	<b>17,309</b>	<b>16,470</b>	<b>15,027</b>	<b>18,215</b>	<b>15,975</b>	<b>15,775</b>
<b>Unaccounted</b>	<b>322</b>	<b>516</b>	<b>32</b>	<b>275</b>	<b>390</b>	<b>290</b>
<b>United States</b>	<b>572</b>	<b>302</b>	<b>148</b>	<b>400</b>	<b>300</b>	<b>500</b>
<b>World Total</b>	<b>18,203</b>	<b>17,288</b>	<b>15,207</b>	<b>18,890</b>	<b>16,665</b>	<b>16,565</b>

TY=Trade Year, see Endnotes.

**World Barley Production, Consumption, and Stocks**  
**Local Marketing Years, Thousand Metric Tons**

	2008/09	2009/10	2010/11	2011/12	2012/13 Jul	2012/13 Aug
<b>Production</b>						
Algeria	560	2,400	1,500	1,350	1,600	1,800
Argentina	2,110	1,356	2,950	4,300	5,400	5,800
Australia	7,997	7,865	8,145	8,500	8,000	8,000
Belarus	2,212	2,123	1,966	1,800	2,000	2,000
Canada	11,781	9,517	7,605	7,760	8,500	8,500
China	2,823	2,318	1,972	2,500	2,600	2,600
Ethiopia	1,484	1,569	1,525	1,592	1,580	1,580
EU-27	65,509	62,149	53,514	51,462	53,593	52,853
India	1,200	1,690	1,350	1,660	1,650	1,610
Iran	1,547	3,446	3,210	2,900	3,400	3,400
Kazakhstan	2,059	2,519	1,313	2,593	1,800	1,500
Morocco	1,272	3,800	2,570	2,340	1,100	1,100
Russia	23,148	17,881	8,350	16,935	15,500	14,500
Turkey	5,700	6,500	5,900	7,000	5,800	5,500
Ukraine	12,612	11,833	8,484	9,098	6,000	6,600
Others	7,803	8,840	8,649	8,713	8,652	8,647
<b>Subtotal</b>	149,817	145,806	119,003	130,503	127,175	125,990
<b>United States</b>	5,230	4,949	3,925	3,392	4,718	4,812
<b>World Total</b>	155,047	150,755	122,928	133,895	131,893	130,802
<b>Total Consumption</b>						
Algeria	1,100	1,350	1,500	1,700	1,800	1,800
Argentina	895	990	1,135	1,110	1,200	1,550
Australia	4,000	4,500	4,300	3,800	4,000	4,000
Belarus	2,200	2,200	2,000	2,000	2,000	2,000
Canada	9,065	8,504	7,584	7,200	7,300	7,200
China	4,200	4,400	4,150	4,500	4,500	4,500
EU-27	57,000	56,500	56,400	51,700	52,200	52,200
India	1,000	1,500	1,350	1,550	1,700	1,680
Iran	3,550	3,700	3,700	3,900	3,800	3,800
Japan	1,550	1,550	1,550	1,525	1,500	1,500
Morocco	1,700	2,900	3,050	3,100	2,100	2,100
Russia	17,100	16,650	9,500	14,300	13,700	12,900
Saudi Arabia	7,425	7,425	6,325	6,525	7,025	7,025
Turkey	5,700	5,900	6,000	6,650	6,100	5,800
Ukraine	5,900	5,600	6,000	5,600	4,800	5,300
Others	15,929	16,131	15,406	15,640	14,680	14,580
<b>Subtotal</b>	138,945	140,054	131,540	132,411	128,786	128,199
<b>United States</b>	5,127	4,604	4,537	4,191	4,573	5,116
<b>World Total</b>	144,072	144,658	136,077	136,602	133,359	133,315
<b>Ending Stocks</b>						
Algeria	184	1,247	1,336	1,586	1,786	1,686
Canada	2,843	2,583	1,441	751	901	901
EU-27	10,916	15,532	7,952	5,114	4,281	3,567
Iran	622	1,268	1,178	1,378	1,278	1,278
Russia	3,813	2,395	1,386	951	1,071	951
Saudi Arabia	2,203	2,078	1,253	2,228	2,203	2,203
Ukraine	1,055	1,067	794	1,522	752	852
Others	7,804	8,784	7,035	6,775	6,668	6,332
<b>Subtotal</b>	29,440	34,954	22,375	20,305	18,940	17,770
<b>United States</b>	1,932	2,515	1,945	1,308	1,562	1,330
<b>World Total</b>	31,372	37,469	24,320	21,613	20,502	19,100



## Regional Barley Imports, Production, Consumption, and Stocks

Thousand Metric Tons

	2008/09	2009/10	2010/11	2011/12	Jul 2012/13	Aug 2012/13
<b>TY Imports</b>						
North America	737	373	227	525	500	700
South America	810	772	905	850	835	835
European Union	156	66	286	350	200	200
Other Europe	82	158	242	135	155	155
Former Soviet Union - 12	269	195	704	620	655	655
Middle East	11,681	10,046	8,645	10,560	8,700	8,700
North Africa	973	1,215	959	1,850	1,500	1,300
Sub-Saharan Africa	125	59	76	65	70	70
East Asia	3,000	3,861	3,108	3,625	3,625	3,625
South Asia	48	10	8	30	30	30
Oceania	0	17	15	5	5	5
<b>Total</b>	<b>17,881</b>	<b>16,772</b>	<b>15,175</b>	<b>18,615</b>	<b>16,275</b>	<b>16,275</b>
<b>Production</b>						
North America	17,822	14,966	12,311	11,715	13,781	13,875
South America	3,156	2,443	3,869	5,290	6,630	7,030
European Union	65,509	62,149	53,514	51,462	53,593	52,853
Other Europe	1,543	1,406	1,309	1,330	1,324	1,319
Former Soviet Union - 12	41,651	35,973	21,675	32,060	26,930	26,230
Middle East	8,004	11,320	11,096	11,665	10,575	10,275
North Africa	2,347	7,324	4,572	4,435	3,495	3,695
Sub-Saharan Africa	1,801	1,933	1,865	2,046	1,998	1,998
East Asia	3,210	2,646	2,215	2,800	2,910	2,910
South Asia	1,607	2,330	1,957	2,192	2,257	2,217
Oceania	8,397	8,265	8,545	8,900	8,400	8,400
<b>Total</b>	<b>155,047</b>	<b>150,755</b>	<b>122,928</b>	<b>133,895</b>	<b>131,893</b>	<b>130,802</b>
<b>Domestic Consumption</b>						
North America	15,042	13,858	12,871	12,116	12,623	13,066
South America	2,703	2,933	2,937	2,920	3,195	3,545
European Union	57,000	56,500	56,400	51,700	52,200	52,200
Other Europe	1,630	1,552	1,537	1,492	1,450	1,450
Former Soviet Union - 12	28,744	28,090	20,672	25,310	23,745	23,345
Middle East	20,556	20,403	19,673	20,751	19,696	19,396
North Africa	3,987	5,847	5,845	6,125	5,175	5,175
Sub-Saharan Africa	1,935	1,963	1,960	1,990	1,907	1,907
East Asia	6,006	6,195	5,900	6,275	6,250	6,250
South Asia	1,438	2,163	1,967	2,112	2,337	2,317
Oceania	4,400	4,900	4,725	4,200	4,400	4,400
<b>Total</b>	<b>143,441</b>	<b>144,404</b>	<b>134,487</b>	<b>134,991</b>	<b>132,978</b>	<b>133,051</b>
<b>Ending Stocks</b>						
North America	5,112	5,231	3,581	2,167	2,534	2,302
South America	766	601	851	771	702	891
European Union	10,916	15,532	7,952	5,114	4,281	3,567
Other Europe	281	249	235	195	209	204
Former Soviet Union - 12	5,701	4,449	2,856	3,131	2,441	2,421
Middle East	4,389	4,837	3,958	5,407	4,836	4,836
North Africa	511	2,952	2,694	2,594	2,504	2,404
Sub-Saharan Africa	208	240	226	342	498	498
East Asia	940	1,239	681	816	1,091	1,091
South Asia	87	224	197	282	207	187
Oceania	2,461	1,915	1,089	794	1,199	699
<b>Total</b>	<b>31,372</b>	<b>37,469</b>	<b>24,320</b>	<b>21,613</b>	<b>20,502</b>	<b>19,100</b>

NOTES: Regional definitions appear on last page of this circular. Imports are reported on a trade year basis. All other data are reported using local marketing years.

**World Sorghum Trade**  
**October/September Year, Thousand Metric Tons**

	2008/09	2009/10	2010/11	2011/12	2012/13 Jul	2012/13 Aug
<b>TY Exports</b>						
Argentina	907	1,507	1,893	1,800	2,200	2,200
Australia	1,360	350	575	1,200	1,000	1,000
China	32	41	68	75	75	75
Ethiopia	0	0	75	75	75	75
India	54	124	31	25	50	25
Nigeria	50	50	60	60	70	70
South Africa	48	48	18	20	20	20
Others	47	118	77	60	60	60
<b>Subtotal</b>	2,498	2,238	2,797	3,315	3,550	3,525
<b>United States</b>	3,598	4,074	3,827	1,400	3,500	2,500
<b>World Total</b>	6,096	6,312	6,624	4,715	7,050	6,025
<b>TY Imports</b>						
Chile	404	568	729	600	600	600
Colombia	202	212	391	300	300	300
Ethiopia	140	125	35	30	50	50
EU-27	66	7	922	125	300	300
Japan	1,629	1,649	1,418	1,400	1,450	1,450
Mexico	2,496	2,527	2,381	1,200	3,000	2,000
Morocco	4	144	99	5	125	125
Niger	50	60	50	50	50	50
Sudan	300	400	200	300	400	400
Taiwan	72	71	97	75	75	75
Others	399	579	386	385	295	295
<b>Subtotal</b>	5,762	6,342	6,708	4,470	6,645	5,645
<b>Unaccounted</b>	331	-30	-86	242	405	380
<b>United States</b>	3	0	2	3	0	0
<b>World Total</b>	6,096	6,312	6,624	4,715	7,050	6,025

TY=Trade Year, see Endnotes.

**World Sorghum Production, Consumption, and Stocks**  
**Local Marketing Years, Thousand Metric Tons**

	2008/09	2009/10	2010/11	2011/12	2012/13 Jul	2012/13 Aug
<b>Production</b>						
Argentina	1,660	3,629	4,400	4,000	4,800	4,800
Australia	2,692	1,508	2,068	2,650	2,500	2,500
Brazil	2,004	1,854	2,314	2,200	2,800	2,800
Burkina	1,875	1,522	1,950	1,600	1,800	1,800
Chad	590	600	820	1,200	650	650
China	1,837	1,677	2,456	2,600	2,650	2,650
Egypt	900	900	900	900	900	900
Ethiopia	2,619	2,084	3,465	3,781	3,550	3,550
India	7,250	6,700	7,000	6,030	6,700	6,400
Mali	930	980	925	850	850	850
Mexico	7,067	6,250	7,385	6,250	6,800	6,800
Niger	1,214	739	1,300	700	1,000	1,000
Nigeria	11,000	6,600	6,750	6,850	6,900	6,900
Sudan	4,192	2,630	4,606	2,089	3,800	3,800
Tanzania	551	710	800	788	740	740
Others	6,320	6,154	6,507	6,626	6,743	6,743
<b>Subtotal</b>	<b>52,701</b>	<b>44,537</b>	<b>53,646</b>	<b>49,114</b>	<b>53,183</b>	<b>52,883</b>
<b>United States</b>	<b>11,998</b>	<b>9,728</b>	<b>8,779</b>	<b>5,447</b>	<b>8,636</b>	<b>6,290</b>
<b>World Total</b>	<b>64,699</b>	<b>54,265</b>	<b>62,425</b>	<b>54,561</b>	<b>61,819</b>	<b>59,173</b>
<b>Total Consumption</b>						
Argentina	1,100	1,900	2,250	2,350	2,500	2,500
Australia	1,805	1,205	1,405	1,405	1,505	1,505
Brazil	1,875	1,875	2,275	2,275	2,700	2,700
Burkina	1,700	1,695	1,800	1,600	1,800	1,800
China	2,000	1,900	2,200	2,450	2,750	2,750
Egypt	950	900	900	950	950	950
Ethiopia	2,700	2,400	3,200	3,700	3,600	3,600
EU-27	905	630	1,550	760	885	885
India	7,200	6,600	6,800	6,200	6,600	6,400
Japan	1,600	1,650	1,460	1,400	1,450	1,450
Mali	930	980	925	850	850	850
Mexico	8,600	9,700	9,400	8,000	9,500	8,700
Niger	1,200	900	1,250	850	1,050	1,050
Nigeria	10,950	6,550	6,700	6,800	6,850	6,850
Sudan	4,500	3,400	4,500	2,750	4,100	4,100
Others	8,124	8,103	9,097	9,250	8,930	8,930
<b>Subtotal</b>	<b>55,943</b>	<b>50,691</b>	<b>55,728</b>	<b>51,915</b>	<b>56,781</b>	<b>55,740</b>
<b>United States</b>	<b>8,319</b>	<b>5,859</b>	<b>5,279</b>	<b>4,064</b>	<b>4,826</b>	<b>3,811</b>
<b>World Total</b>	<b>64,262</b>	<b>56,550</b>	<b>61,007</b>	<b>55,979</b>	<b>61,607</b>	<b>59,551</b>
<b>Ending Stocks</b>						
Argentina	194	152	600	450	350	350
Australia	678	681	494	539	434	434
Brazil	188	171	211	141	246	246
China	456	275	467	552	387	387
Ethiopia	238	47	272	308	233	233
Mexico	1,336	413	779	229	578	329
Sudan	684	309	610	244	339	339
Others	1,407	1,190	1,574	1,137	1,010	965
<b>Subtotal</b>	<b>5,181</b>	<b>3,238</b>	<b>5,007</b>	<b>3,600</b>	<b>3,577</b>	<b>3,283</b>
<b>United States</b>	<b>1,390</b>	<b>1,048</b>	<b>697</b>	<b>686</b>	<b>939</b>	<b>625</b>
<b>World Total</b>	<b>6,571</b>	<b>4,286</b>	<b>5,704</b>	<b>4,286</b>	<b>4,516</b>	<b>3,908</b>

## Regional Sorghum Imports, Production, Consumption, and Stocks

Thousand Metric Tons

	2008/09	2009/10	2010/11	2011/12	Jul 2012/13	Aug 2012/13
<b>TY Imports</b>						
North America	2,499	2,527	2,383	1,203	3,000	2,000
South America	665	848	1,214	960	960	960
European Union	66	7	922	125	300	300
Other Europe	0	17	0	5	5	5
Middle East	81	48	120	30	30	30
North Africa	45	166	120	40	150	150
Sub-Saharan Africa	672	872	390	605	640	640
East Asia	1,719	1,806	1,523	1,490	1,540	1,540
Southeast Asia	14	16	17	10	15	15
Others	4	35	21	5	5	5
<b>Total</b>	<b>5,765</b>	<b>6,342</b>	<b>6,710</b>	<b>4,473</b>	<b>6,645</b>	<b>5,645</b>
<b>Production</b>						
North America	19,065	15,978	16,164	11,697	15,436	13,090
Central America	298	326	329	329	329	329
Caribbean	128	128	128	128	128	128
South America	4,719	6,153	7,351	6,892	8,282	8,282
European Union	517	621	626	670	592	592
Middle East	654	581	807	640	640	640
North Africa	915	915	915	915	915	915
Sub-Saharan Africa	26,404	19,459	24,362	21,795	23,432	23,432
East Asia	1,857	1,697	2,476	2,620	2,670	2,670
South Asia	7,395	6,845	7,145	6,175	6,845	6,545
Southeast Asia	55	54	54	50	50	50
Oceania	2,692	1,508	2,068	2,650	2,500	2,500
Others	0	0	0	0	0	0
<b>Total</b>	<b>64,699</b>	<b>54,265</b>	<b>62,425</b>	<b>54,561</b>	<b>61,819</b>	<b>59,173</b>
<b>Domestic Consumption</b>						
North America	16,919	15,559	14,679	12,064	14,326	12,511
Central America	315	325	325	325	320	320
Caribbean	128	128	128	128	128	128
South America	4,766	5,350	6,274	6,272	6,817	6,817
European Union	905	630	1,550	760	885	885
Middle East	749	669	914	675	675	675
North Africa	965	1,012	1,066	970	1,090	1,090
Sub-Saharan Africa	26,795	20,882	23,855	22,690	23,990	23,990
East Asia	3,699	3,643	3,779	3,955	4,295	4,295
South Asia	7,349	6,780	6,955	6,350	6,750	6,550
Southeast Asia	63	47	61	55	60	60
Oceania	1,805	1,205	1,405	1,405	1,505	1,505
Others	0	17	0	5	5	5
<b>Total</b>	<b>64,458</b>	<b>56,247</b>	<b>60,991</b>	<b>55,654</b>	<b>60,846</b>	<b>58,831</b>
<b>Ending Stocks</b>						
North America	2,726	1,461	1,476	915	1,517	954
Central America	27	28	34	33	37	37
South America	491	393	867	632	642	642
European Union	34	24	17	22	24	24
Middle East	62	22	35	30	25	25
North Africa	29	43	57	37	7	7
Sub-Saharan Africa	1,760	1,080	1,844	1,313	1,205	1,205
East Asia	578	397	549	629	469	469
South Asia	181	154	327	132	152	107
Oceania	678	681	494	539	434	434
Others	5	3	4	4	4	4
<b>Total</b>	<b>6,571</b>	<b>4,286</b>	<b>5,704</b>	<b>4,286</b>	<b>4,516</b>	<b>3,908</b>

NOTES: Regional definitions appear on last page of this circular. Imports are reported on a trade year basis. All other data are reported using local marketing years.

**World Oats Trade**  
**October/September Year, Thousand Metric Tons**

	2008/09	2009/10	2010/11	2011/12	2012/13 Jul	2012/13 Aug
<b>TY Exports</b>						
Argentina	5	1	6	5	5	5
Australia	161	211	211	150	200	200
Brazil	9	4	9	5	5	5
Canada	1,792	1,539	1,497	1,600	1,600	1,700
Chile	31	37	129	100	100	100
EU-27	103	216	113	150	100	100
Russia	2	4	1	15	5	5
Others	6	20	4	7	5	5
<b>Subtotal</b>	2,109	2,032	1,970	2,032	2,020	2,120
<b>United States</b>	38	38	37	40	40	40
<b>World Total</b>	2,147	2,070	2,007	2,072	2,060	2,160
<b>TY Imports</b>						
Albania	0	0	5	0	0	0
Algeria	0	1	0	0	0	0
Bosnia and Herzegovina	2	3	5	5	5	5
Canada	14	21	18	15	20	20
China	39	57	58	50	50	50
Colombia	2	2	2	5	5	5
Ecuador	14	11	11	10	10	10
EU-27	4	2	6	5	5	5
Japan	46	56	64	60	60	60
Mexico	82	46	103	75	75	75
Norway	8	34	10	25	15	15
South Africa	33	21	25	25	25	25
Switzerland	52	49	49	50	50	50
Turkey	6	0	5	5	5	5
Uruguay	11	4	11	5	5	5
Others	5	3	8	5	0	0
<b>Subtotal</b>	318	310	380	340	330	330
<b>Unaccounted</b>	42	153	159	132	130	230
<b>United States</b>	1,787	1,607	1,468	1,600	1,600	1,600
<b>World Total</b>	2,147	2,070	2,007	2,072	2,060	2,160

TY=Trade Year, see Endnotes.

**World Oats Production, Consumption, and Stocks**  
**Local Marketing Years, Thousand Metric Tons**

	2008/09	2009/10	2010/11	2011/12	2012/13 Jul	2012/13 Aug
<b>Production</b>						
Algeria	80	140	140	140	140	140
Argentina	291	182	660	345	400	400
Australia	1,160	1,162	1,141	1,650	1,650	1,650
Belarus	605	552	442	800	600	600
Brazil	239	253	379	370	370	370
Canada	4,273	2,906	2,480	3,000	2,950	2,950
Chile	344	381	564	505	560	560
China	530	580	525	600	580	580
EU-27	8,935	8,579	7,446	7,872	7,800	7,921
Kazakhstan	138	204	134	258	200	200
Norway	328	277	299	220	220	220
Russia	5,835	5,401	3,218	5,334	5,000	5,000
Serbia	120	120	120	120	120	120
Turkey	196	218	204	210	210	210
Ukraine	944	731	458	550	550	550
Others	485	485	466	470	471	471
<b>Subtotal</b>	<b>24,503</b>	<b>22,171</b>	<b>18,676</b>	<b>22,444</b>	<b>21,821</b>	<b>21,942</b>
<b>United States</b>	<b>1,294</b>	<b>1,351</b>	<b>1,178</b>	<b>779</b>	<b>947</b>	<b>966</b>
<b>World Total</b>	<b>25,797</b>	<b>23,522</b>	<b>19,854</b>	<b>23,223</b>	<b>22,768</b>	<b>22,908</b>
<b>Total Consumption</b>						
Algeria	80	140	141	140	140	140
Argentina	300	200	650	350	400	400
Australia	1,035	975	900	1,350	1,450	1,450
Belarus	600	575	475	775	575	575
Brazil	225	250	370	360	375	375
Canada	1,766	1,753	1,529	1,450	1,400	1,350
Chile	325	350	450	400	450	450
China	575	625	625	625	625	625
EU-27	8,500	8,100	7,750	7,600	7,700	7,800
Kazakhstan	135	210	130	225	225	225
Mexico	210	215	185	215	190	190
Norway	320	320	295	245	245	245
Russia	5,600	5,500	3,450	5,000	5,100	5,100
Turkey	210	210	210	210	210	210
Ukraine	925	725	475	550	550	550
Others	608	622	646	639	639	639
<b>Subtotal</b>	<b>21,438</b>	<b>20,839</b>	<b>18,278</b>	<b>20,356</b>	<b>20,371</b>	<b>20,521</b>
<b>United States</b>	<b>2,968</b>	<b>3,011</b>	<b>2,789</b>	<b>2,549</b>	<b>2,521</b>	<b>2,595</b>
<b>World Total</b>	<b>24,406</b>	<b>23,850</b>	<b>21,067</b>	<b>22,905</b>	<b>22,892</b>	<b>23,116</b>
<b>Ending Stocks</b>						
Argentina	89	70	74	69	64	64
Australia	147	126	159	309	309	309
Belarus	74	51	18	43	68	68
Canada	1,527	1,170	769	634	604	554
China	114	126	84	109	114	114
EU-27	972	1,224	813	940	949	966
Russia	499	397	167	486	391	381
Others	203	188	239	235	192	197
<b>Subtotal</b>	<b>3,625</b>	<b>3,352</b>	<b>2,323</b>	<b>2,825</b>	<b>2,691</b>	<b>2,653</b>
<b>United States</b>	<b>1,221</b>	<b>1,166</b>	<b>982</b>	<b>798</b>	<b>817</b>	<b>762</b>
<b>World Total</b>	<b>4,846</b>	<b>4,518</b>	<b>3,305</b>	<b>3,623</b>	<b>3,508</b>	<b>3,415</b>

## Regional Oats Imports, Production, Consumption, and Stocks

Thousand Metric Tons

	2008/09	2009/10	2010/11	2011/12	Jul 2012/13	Aug 2012/13
<b>TY Imports</b>						
North America	1,883	1,674	1,589	1,690	1,695	1,695
South America	32	19	24	25	20	20
European Union	4	2	6	5	5	5
Other Europe	62	87	71	80	70	70
Former Soviet Union - 12	0	0	6	0	0	0
Middle East	6	0	5	5	5	5
North Africa	0	1	0	0	0	0
Sub-Saharan Africa	33	21	25	25	25	25
East Asia	85	113	122	110	110	110
Oceania	0	0	0	0	0	0
<b>Total</b>	<b>2,105</b>	<b>1,917</b>	<b>1,848</b>	<b>1,940</b>	<b>1,930</b>	<b>1,930</b>
<b>Production</b>						
North America	5,715	4,387	3,769	3,894	4,012	4,031
South America	897	857	1,644	1,261	1,371	1,371
European Union	8,935	8,579	7,446	7,872	7,800	7,921
Other Europe	605	554	576	497	497	497
Former Soviet Union - 12	7,527	6,893	4,257	6,947	6,356	6,356
Middle East	196	218	204	210	210	210
North Africa	110	170	170	170	170	170
Sub-Saharan Africa	45	45	45	45	45	45
East Asia	532	582	527	602	582	582
Oceania	1,235	1,237	1,216	1,725	1,725	1,725
<b>Total</b>	<b>25,797</b>	<b>23,522</b>	<b>19,854</b>	<b>23,223</b>	<b>22,768</b>	<b>22,908</b>
<b>Domestic Consumption</b>						
North America	4,944	4,979	4,503	4,214	4,111	4,135
South America	896	857	1,538	1,171	1,286	1,286
European Union	8,500	8,100	7,750	7,600	7,700	7,800
Other Europe	647	655	633	577	577	577
Former Soviet Union - 12	7,265	7,015	4,535	6,555	6,456	6,456
Middle East	210	210	210	210	210	210
North Africa	110	170	171	170	170	170
Sub-Saharan Africa	75	65	70	70	70	70
East Asia	625	680	685	691	690	690
Oceania	1,110	1,050	975	1,425	1,525	1,525
<b>Total</b>	<b>24,382</b>	<b>23,781</b>	<b>21,070</b>	<b>22,683</b>	<b>22,795</b>	<b>22,919</b>
<b>Ending Stocks</b>						
North America	2,756	2,343	1,756	1,437	1,426	1,321
South America	113	95	150	114	104	109
European Union	972	1,224	813	940	949	966
Other Europe	58	47	63	63	53	53
Former Soviet Union - 12	658	517	235	605	505	495
Middle East	2	10	9	14	19	19
North Africa	1	1	1	1	1	1
Sub-Saharan Africa	23	24	24	24	24	24
East Asia	116	131	95	116	118	118
Oceania	147	126	159	309	309	309
<b>Total</b>	<b>4,846</b>	<b>4,518</b>	<b>3,305</b>	<b>3,623</b>	<b>3,508</b>	<b>3,415</b>

NOTES: Regional definitions appear on last page of this circular. Imports are reported on a trade year basis. All other data are reported using local marketing years.

**World Rye Trade**  
**October/September Year, Thousand Metric Tons**

	2008/09	2009/10	2010/11	2011/12	2012/13 Jul	2012/13 Aug
<b>TY Exports</b>						
Belarus	50	25	150	75	100	100
Canada	76	142	221	125	150	150
EU-27	114	136	71	75	75	75
Russia	14	11	21	250	100	50
Ukraine	6	93	2	5	5	5
Others	0	0	3	0	0	0
<b>Subtotal</b>	260	407	468	530	430	380
<b>United States</b>	6	4	3	3	5	5
<b>World Total</b>	266	411	471	533	435	385
<b>TY Imports</b>						
Albania	0	0	0	0	0	0
EU-27	8	6	36	100	50	50
Israel	11	9	19	10	10	10
Japan	57	103	101	75	100	100
Korea, South	7	7	11	5	5	5
Norway	11	14	12	10	10	10
Switzerland	4	6	2	5	5	5
Others	11	4	151	5	0	0
<b>Subtotal</b>	109	149	332	210	180	180
<b>Unaccounted</b>	49	133	-9	173	105	55
<b>United States</b>	108	129	148	150	150	150
<b>World Total</b>	266	411	471	533	435	385

TY=Trade Year, see Endnotes.



**World Rye Production, Consumption, and Stocks**  
**Local Marketing Years, Thousand Metric Tons**

	2008/09	2009/10	2010/11	2011/12	2012/13 Jul	2012/13 Aug
<b>Production</b>						
Belarus	1,492	1,227	735	1,500	1,500	1,500
Canada	316	280	232	195	240	240
EU-27	9,262	9,952	7,592	6,939	7,400	7,586
Kazakhstan	40	75	42	28	50	50
Russia	4,505	4,333	1,642	2,969	3,000	2,700
Turkey	247	343	366	350	350	350
Ukraine	1,051	954	464	550	450	650
Others	205	182	173	160	155	155
<b>Subtotal</b>	<b>17,118</b>	<b>17,346</b>	<b>11,246</b>	<b>12,691</b>	<b>13,145</b>	<b>13,231</b>
<b>United States</b>	<b>203</b>	<b>178</b>	<b>189</b>	<b>161</b>	<b>192</b>	<b>192</b>
<b>World Total</b>	<b>17,321</b>	<b>17,524</b>	<b>11,435</b>	<b>12,852</b>	<b>13,337</b>	<b>13,423</b>
<b>Total Consumption</b>						
Argentina	55	55	40	45	40	40
Belarus	1,400	1,300	650	1,300	1,300	1,300
Canada	152	140	129	75	80	80
EU-27	8,750	9,550	8,200	7,550	7,700	7,700
Japan	65	90	105	75	100	100
Kazakhstan	40	75	40	30	50	50
Norway	59	40	45	26	26	26
Russia	4,400	4,325	1,850	2,800	2,800	2,650
Turkey	275	340	350	350	350	350
Ukraine	800	800	650	600	450	600
Others	127	124	129	120	119	119
<b>Subtotal</b>	<b>16,181</b>	<b>16,909</b>	<b>12,223</b>	<b>13,119</b>	<b>13,129</b>	<b>13,079</b>
<b>United States</b>	<b>292</b>	<b>273</b>	<b>330</b>	<b>317</b>	<b>321</b>	<b>321</b>
<b>World Total</b>	<b>16,473</b>	<b>17,182</b>	<b>12,553</b>	<b>13,436</b>	<b>13,450</b>	<b>13,400</b>
<b>Ending Stocks</b>						
Belarus	242	144	79	204	304	304
Canada	123	139	51	36	46	46
EU-27	1,424	1,727	1,032	471	528	332
Japan	5	18	14	14	14	14
Russia	312	308	250	179	269	179
Turkey	14	17	33	38	38	38
Ukraine	313	411	189	134	129	179
Others	7	7	9	6	6	6
<b>Subtotal</b>	<b>2,440</b>	<b>2,771</b>	<b>1,657</b>	<b>1,082</b>	<b>1,334</b>	<b>1,098</b>
<b>United States</b>	<b>13</b>	<b>24</b>	<b>20</b>	<b>11</b>	<b>18</b>	<b>18</b>
<b>World Total</b>	<b>2,453</b>	<b>2,795</b>	<b>1,677</b>	<b>1,093</b>	<b>1,352</b>	<b>1,116</b>

## Regional Rye Imports, Production, Consumption, and Stocks

Thousand Metric Tons

	2008/09	2009/10	2010/11	2011/12	Jul 2012/13	Aug 2012/13
<b>TY Imports</b>						
North America	108	129	148	150	150	150
South America	0	0	0	0	0	0
European Union	8	6	36	100	50	50
Other Europe	18	22	15	15	15	15
Former Soviet Union - 12	2	2	150	0	0	0
Middle East	17	9	19	15	10	10
Sub-Saharan Africa	0	0	0	0	0	0
East Asia	64	110	112	80	105	105
Oceania	0	0	0	0	0	0
<b>Total</b>	<b>217</b>	<b>278</b>	<b>480</b>	<b>360</b>	<b>330</b>	<b>330</b>
<b>Production</b>						
North America	519	458	421	356	432	432
South America	63	61	45	50	45	45
European Union	9,262	9,952	7,592	6,939	7,400	7,586
Other Europe	119	98	105	87	87	87
Former Soviet Union - 12	7,088	6,589	2,883	5,047	5,000	4,900
Middle East	247	343	366	350	350	350
Sub-Saharan Africa	3	3	3	3	3	3
East Asia	0	0	0	0	0	0
Oceania	20	20	20	20	20	20
<b>Total</b>	<b>17,321</b>	<b>17,524</b>	<b>11,435</b>	<b>12,852</b>	<b>13,337</b>	<b>13,423</b>
<b>Domestic Consumption</b>						
North America	444	413	459	392	401	401
South America	63	61	45	50	45	45
European Union	8,750	9,550	8,200	7,550	7,700	7,700
Other Europe	137	119	119	103	102	102
Former Soviet Union - 12	6,640	6,500	3,190	4,730	4,600	4,600
Middle East	286	349	369	360	360	360
Sub-Saharan Africa	3	3	3	3	3	3
East Asia	72	97	116	80	105	105
Oceania	20	20	17	20	20	20
<b>Total</b>	<b>16,415</b>	<b>17,112</b>	<b>12,518</b>	<b>13,288</b>	<b>13,336</b>	<b>13,336</b>
<b>Ending Stocks</b>						
North America	136	163	71	47	64	64
South America	0	0	0	0	0	0
European Union	1,424	1,727	1,032	471	528	332
Other Europe	1	1	1	0	0	0
Former Soviet Union - 12	873	869	526	523	708	668
Middle East	14	17	33	38	38	38
Sub-Saharan Africa	0	0	0	0	0	0
East Asia	5	18	14	14	14	14
Oceania	0	0	0	0	0	0
<b>Total</b>	<b>2,453</b>	<b>2,795</b>	<b>1,677</b>	<b>1,093</b>	<b>1,352</b>	<b>1,116</b>

NOTES: Regional definitions appear on last page of this circular. Imports are reported on a trade year basis. All other data are reported using local marketing years.



# HISTORICAL DATA SERIES FOR SELECTED REGIONS AND COUNTRIES

---

## CONTENTS

European Union: Grain Supply and Demand.....	36
China: Grain Supply and Demand.....	37
Other Europe: Grain Supply and Demand .....	38
Former Soviet Union: Grain Supply and Demand .....	39
Wheat Supply and Disappearance: Selected Exporters .....	43
Corn Supply and Disappearance: Selected Exporters .....	45
Barley Supply and Disappearance: Selected Exporters.....	47
Sorghum Supply and Disappearance: Selected Exporters.....	48
U.S. Grains: Supply and Distribution.....	49
Total Wheat and Coarse Grains: Supply and Demand.....	50
World Wheat and Coarse Grains: Supply and Demand .....	51
World Corn and Barley: Supply and Demand .....	52
World Rice: Supply and Demand.....	53

**European Union: Grain Supply and Demand**

**Wheat and Coarse Grains Millions of Metric Tons/Hectares**

	<b>Area Harvested</b>	<b>Yield</b>	<b>Production</b>	<b>Imports</b>	<b>Exports</b>	<b>Feed Dom. Consumpti</b>	<b>Domestic Consumpti</b>	<b>Ending Stocks</b>
<b>Wheat</b>								
2001/02	25.9	4.8	123.4	8.7	12.8	56.5	118.5	18.3
2002/03	26.4	5.0	132.6	10.7	18.1	60.0	125.0	18.5
2003/04	24.3	4.5	110.6	7.4	9.8	52.4	115.1	11.5
2004/05	26.0	5.7	146.9	7.1	14.7	59.2	123.2	27.5
2005/06	25.8	5.1	132.4	6.8	15.7	63.0	127.5	23.4
2006/07	24.5	5.1	124.9	5.2	13.8	60.2	125.5	14.2
2007/08	24.7	4.9	120.1	6.9	12.3	52.4	116.5	12.4
2008/09	26.7	5.7	151.1	7.7	25.4	60.5	127.0	18.9
2009/10	25.8	5.4	138.8	5.5	22.1	57.5	125.0	16.2
2010/11	25.8	5.3	135.9	4.7	22.9	52.5	122.0	11.8
2011/12	25.7	5.4	137.4	7.2	16.4	57.0	126.5	13.5
2012/13	25.1	5.3	132.9	6.0	17.0	55.0	124.5	10.9
<b>Coarse Grains</b>								
2001/02	33.7	4.5	150.5	3.9	6.7	108.1	143.8	22.4
2002/03	32.8	4.5	148.4	4.4	7.6	109.5	145.0	22.6
2003/04	32.7	4.0	131.8	8.2	4.2	109.7	145.3	13.1
2004/05	33.4	5.0	166.7	3.0	4.9	116.6	152.6	25.3
2005/06	32.7	4.5	146.8	2.8	4.4	110.0	148.1	22.4
2006/07	32.0	4.3	137.9	8.1	4.7	110.9	148.4	15.3
2007/08	32.2	4.2	136.6	20.3	4.6	119.6	154.9	12.7
2008/09	33.6	4.8	162.1	3.4	5.6	114.0	151.9	20.8
2009/10	32.5	4.8	155.0	3.0	3.0	112.6	150.1	25.9
2010/11	30.0	4.7	140.2	8.5	6.2	114.3	152.0	16.4
2011/12	29.9	4.9	146.7	6.9	6.4	111.6	149.8	13.8
2012/13	30.7	4.7	145.2	3.6	3.6	110.8	149.0	10.0
<b>Wheat and Coarse Grains</b>								
2001/02	59.6	4.6	273.9	12.7	19.4	164.6	262.3	40.7
2002/03	59.2	4.7	281.0	15.0	25.7	169.5	270.0	41.1
2003/04	57.0	4.2	242.4	15.6	14.0	162.1	260.4	24.7
2004/05	59.4	5.3	313.6	10.1	19.6	175.8	275.9	52.8
2005/06	58.5	4.8	279.1	9.6	20.1	173.0	275.6	45.8
2006/07	56.4	4.7	262.8	13.3	18.5	171.1	273.9	29.5
2007/08	56.9	4.5	256.7	27.2	16.9	172.0	271.4	25.2
2008/09	60.2	5.2	313.2	11.2	30.9	174.5	278.9	39.8
2009/10	58.3	5.0	293.9	8.6	25.1	170.1	275.1	42.0
2010/11	55.8	4.9	276.1	13.2	29.1	166.8	274.0	28.2
2011/12	55.6	5.1	284.1	14.1	22.8	168.6	276.3	27.3
2012/13	55.8	5.0	278.1	9.6	20.6	165.8	273.5	20.9

**China: Grain Supply and Demand**

**Wheat and Coarse Grains Millions of Metric Tons/Hectares**

	<b>Area Harvested</b>	<b>Yield</b>	<b>Production</b>	<b>Imports</b>	<b>Exports</b>	<b>Feed Dom. Consumpti</b>	<b>Domestic Consumpti</b>	<b>Ending Stocks</b>
<b>Wheat</b>								
2001/02	24.6	3.8	93.9	1.1	1.5	9.0	108.7	76.6
2002/03	23.9	3.8	90.3	0.4	1.7	6.5	105.2	60.4
2003/04	22.0	3.9	86.5	3.7	2.8	6.0	104.5	43.3
2004/05	21.6	4.3	92.0	6.7	1.2	4.0	102.0	38.8
2005/06	22.8	4.3	97.4	1.1	1.4	3.5	101.5	34.5
2006/07	23.6	4.6	108.5	0.4	2.8	4.0	102.0	38.6
2007/08	23.7	4.6	109.3	0.0	2.8	8.0	106.0	39.1
2008/09	23.6	4.8	112.5	0.5	0.7	8.0	105.5	45.8
2009/10	24.3	4.7	115.1	1.4	0.9	10.0	107.0	54.4
2010/11	24.3	4.7	115.2	0.9	0.9	13.0	110.5	59.1
2011/12	24.2	4.9	117.9	2.9	1.0	22.0	120.5	58.5
2012/13	24.3	4.9	118.0	2.0	1.0	22.0	122.0	55.5
<b>Coarse Grains</b>								
2001/02	27.3	4.5	122.4	2.0	8.6	96.3	133.0	85.6
2002/03	27.8	4.7	130.6	1.8	15.3	98.4	136.3	66.5
2003/04	26.8	4.6	124.0	1.5	7.7	99.1	138.3	45.9
2004/05	28.0	4.9	138.3	2.1	7.6	100.3	141.1	37.6
2005/06	28.8	5.1	147.8	2.3	3.8	103.5	147.1	36.8
2006/07	30.9	5.1	159.1	1.2	5.5	104.9	153.6	38.0
2007/08	31.9	5.0	159.2	1.2	0.9	106.7	158.0	39.4
2008/09	32.2	5.4	172.4	1.7	0.2	108.7	161.1	52.2
2009/10	33.4	5.1	169.8	3.8	0.2	118.7	173.2	52.4
2010/11	34.6	5.3	183.4	2.7	0.2	128.8	188.2	50.1
2011/12	35.6	5.6	199.7	7.3	0.2	131.9	196.8	60.1
2012/13	36.5	5.7	207.0	4.3	0.3	139.9	210.1	61.0
<b>Wheat and Coarse Grains</b>								
2001/02	52.0	4.2	216.3	3.1	10.1	105.3	241.7	162.2
2002/03	51.7	4.3	220.9	2.2	17.1	104.9	241.5	126.8
2003/04	48.8	4.3	210.5	5.3	10.5	105.1	242.8	89.2
2004/05	49.6	4.6	230.2	8.8	8.8	104.3	243.1	76.4
2005/06	51.6	4.7	245.2	3.4	5.2	107.0	248.6	71.3
2006/07	54.5	4.9	267.6	1.5	8.2	108.9	255.6	76.6
2007/08	55.6	4.8	268.5	1.2	3.7	114.7	264.0	78.5
2008/09	55.8	5.1	284.9	2.1	0.9	116.7	266.6	98.0
2009/10	57.6	4.9	284.9	5.2	1.1	128.7	280.2	106.8
2010/11	58.8	5.1	298.6	3.6	1.1	141.8	298.7	109.2
2011/12	59.8	5.3	317.6	10.2	1.2	153.9	317.3	118.6
2012/13	60.8	5.3	325.0	6.3	1.3	161.9	332.1	116.5

**Other Europe: Grain Supply and Demand**

**Wheat and Coarse Grains Millions of Metric Tons/Hectares**

	<b>Area Harvested</b>	<b>Yield</b>	<b>Production</b>	<b>Imports</b>	<b>Exports</b>	<b>Feed Dom. Consumpti</b>	<b>Domestic Consumpti</b>	<b>Ending Stocks</b>
<b>Wheat</b>								
2001/02	1.4	3.4	4.9	1.8	0.6	0.9	5.9	1.5
2002/03	1.4	3.5	4.9	1.4	0.6	0.9	5.6	1.5
2003/04	1.2	3.0	3.7	1.5	0.1	0.6	5.3	1.2
2004/05	1.3	4.0	5.4	1.5	0.3	0.9	5.8	2.0
2005/06	1.1	3.7	4.2	1.5	0.2	0.8	5.7	1.8
2006/07	1.2	3.6	4.3	1.5	0.6	0.7	5.3	1.8
2007/08	1.2	3.7	4.4	1.9	0.8	0.9	5.5	1.8
2008/09	1.1	4.2	4.7	1.7	0.5	1.0	5.6	2.1
2009/10	1.2	3.8	4.6	1.7	0.8	0.9	5.5	2.1
2010/11	1.1	3.7	3.9	1.7	0.8	0.8	5.4	1.5
2011/12	1.1	4.0	4.4	1.9	0.7	0.9	5.6	1.5
2012/13	1.1	3.8	4.2	1.8	0.6	0.9	5.5	1.4
<b>Coarse Grains</b>								
2001/02	2.7	4.1	10.9	0.8	0.2	9.8	11.1	1.4
2002/03	2.7	4.4	11.7	0.6	0.6	9.9	11.4	1.8
2003/04	2.7	3.4	9.0	0.8	0.1	9.4	10.6	1.0
2004/05	2.7	4.8	12.7	0.6	0.6	10.6	12.0	1.6
2005/06	2.6	4.8	12.6	0.7	1.4	10.6	12.0	1.5
2006/07	2.5	4.6	11.5	0.9	0.9	10.2	11.5	1.5
2007/08	2.6	3.6	9.3	1.0	0.1	9.0	10.3	1.4
2008/09	2.6	4.6	12.3	0.6	1.9	9.5	10.8	1.5
2009/10	2.4	4.8	11.8	0.8	1.7	9.3	10.8	1.7
2010/11	2.5	4.8	12.1	0.8	2.2	9.3	10.8	1.7
2011/12	2.5	4.5	11.5	0.7	2.0	9.1	10.6	1.2
2012/13	2.6	4.0	10.2	0.8	1.3	8.5	10.0	0.8
<b>Wheat and Coarse Grains</b>								
2001/02	4.1	3.9	15.8	2.6	0.8	10.7	17.0	2.9
2002/03	4.1	4.1	16.6	2.0	1.2	10.7	17.0	3.3
2003/04	3.9	3.3	12.7	2.3	0.2	9.9	16.0	2.3
2004/05	4.0	4.5	18.1	2.1	0.9	11.5	17.9	3.7
2005/06	3.8	4.4	16.8	2.1	1.6	11.5	17.7	3.3
2006/07	3.7	4.3	15.8	2.4	1.5	10.9	16.8	3.3
2007/08	3.8	3.6	13.7	2.9	0.9	9.9	15.8	3.2
2008/09	3.8	4.5	17.0	2.3	2.4	10.5	16.4	3.6
2009/10	3.7	4.5	16.4	2.4	2.5	10.2	16.2	3.8
2010/11	3.6	4.5	16.0	2.5	3.0	10.1	16.2	3.1
2011/12	3.6	4.4	15.8	2.6	2.7	10.0	16.2	2.7
2012/13	3.7	3.9	14.4	2.6	1.9	9.4	15.5	2.3

**Former Soviet Union: Grain Supply and Demand**

**Wheat and Coarse Grains Millions of Metric Tons/Hectares**

	<b>Area Harvested</b>	<b>Yield</b>	<b>Production</b>	<b>Imports</b>	<b>Exports</b>	<b>Feed Dom. Consumpti</b>	<b>Domestic Consumpti</b>	<b>Ending Stocks</b>
<b>Wheat</b>								
2006/07	45.2	1.9	84.7	6.0	22.6	21.6	72.5	13.0
2007/08	46.5	2.0	92.4	6.0	22.0	23.9	75.3	14.1
2008/09	51.1	2.3	115.5	6.6	38.2	24.5	76.1	21.8
2009/10	53.0	2.2	114.0	5.4	37.2	26.0	78.2	25.8
2010/11	46.9	1.7	81.1	5.7	13.9	23.7	75.0	23.6
2011/12	49.9	2.3	114.4	7.5	38.7	27.9	80.2	26.6
2012/13	46.8	1.8	83.0	5.8	21.6	24.6	76.2	17.7
<b>Coarse Grains</b>								
2006/07	29.1	2.0	59.1	1.0	8.5	35.8	51.4	5.4
2007/08	27.5	2.0	54.2	1.0	5.3	35.0	50.6	4.8
2008/09	30.3	2.6	79.0	0.7	17.1	41.5	58.1	9.3
2009/10	27.3	2.5	67.6	0.4	15.0	39.0	55.0	7.4
2010/11	22.2	2.1	47.6	1.2	8.7	28.5	41.9	5.5
2011/12	27.3	2.9	79.0	0.9	24.5	38.6	54.6	6.3
2012/13	29.1	2.4	70.3	0.9	18.8	37.5	53.1	5.6

## Former Soviet Union: Grain Supply and Demand (Wheat)

Millions of Tons/Hectares

Country Mktg Year	Area Harvested	Yield	Production	MY Imports	MY Exports	Feed and Residual	Total Consumpti	Ending Stocks
<b>Former Soviet Union - 12</b>								
<b>Kazakhstan</b>								
2009/10	14.8	1.2	17.1	0.0	8.3	2.7	7.6	4.3
2010/11	14.3	0.7	9.6	0.0	4.9	1.9	6.2	2.9
2011/12	13.8	1.6	22.7	0.0	11.0	3.0	8.0	6.6
2012/13	13.5	0.8	11.0	0.0	7.0	2.5	7.5	3.1
<b>Russia</b>								
2009/10	26.7	2.3	61.8	0.2	18.6	16.8	39.6	14.7
2010/11	21.8	1.9	41.5	0.1	4.0	16.0	38.6	13.7
2011/12	24.9	2.3	56.2	0.1	21.6	15.5	38.0	10.5
2012/13	23.0	1.9	43.0	0.2	8.0	15.0	37.2	8.5
<b>Ukraine</b>								
2009/10	6.8	3.1	20.9	0.0	9.3	3.3	12.3	2.4
2010/11	6.3	2.7	16.8	0.0	4.3	2.8	11.6	3.3
2011/12	6.7	3.3	22.1	0.1	5.3	6.1	15.0	5.3
2012/13	5.7	2.6	15.0	0.1	6.0	3.8	12.3	2.1
<b>Uzbekistan</b>								
2009/10	1.4	4.4	6.2	1.7	0.4	1.4	7.5	0.9
2010/11	1.4	4.6	6.5	1.6	0.5	1.5	7.7	0.8
2011/12	1.4	4.5	6.3	2.7	0.7	1.7	8.0	1.1
2012/13	1.4	4.8	6.7	1.5	0.5	1.5	7.7	1.1
<b>Other Former Soviet Union - 12</b>								
2009/10	3.4	2.4	8.2	3.5	0.7	1.8	11.2	3.5
2010/11	3.2	2.1	6.6	3.9	0.2	1.5	10.9	2.8
2011/12	3.1	2.3	7.0	4.7	0.1	1.6	11.3	3.2
2012/13	3.2	2.3	7.3	4.0	0.1	1.8	11.5	2.9
<b>Total Former Soviet Union - 12</b>								
2009/10	53.0	2.2	114.0	5.4	37.2	26.0	78.2	25.8
2010/11	46.9	1.7	81.1	5.7	13.9	23.7	75.0	23.6
2011/12	49.9	2.3	114.4	7.5	38.7	27.9	80.2	26.6
2012/13	46.8	1.8	83.0	5.8	21.6	24.6	76.2	17.7



## Former Soviet Union: Grain Supply and Demand (Barley)

Millions of Tons/Hectares

Country Mktg Year	Area Harvested	Yield	Production	MY Imports	MY Exports	Feed and Residual	Total Consumpti	Ending Stocks
<b>Former Soviet Union - 12</b>								
<b>Kazakhstan</b>								
2009/10	1.8	1.4	2.5	0.0	0.4	1.7	2.0	0.5
2010/11	1.6	0.8	1.3	0.1	0.2	1.2	1.5	0.1
2011/12	1.6	1.7	2.6	0.0	0.8	1.4	1.7	0.2
2012/13	1.6	0.9	1.5	0.0	0.2	1.2	1.4	0.1
<b>Russia</b>								
2009/10	7.7	2.3	17.9	0.0	2.7	12.2	16.7	2.4
2010/11	5.0	1.7	8.4	0.4	0.3	5.5	9.5	1.4
2011/12	7.7	2.2	16.9	0.4	3.5	9.8	14.3	1.0
2012/13	8.1	1.8	14.5	0.4	2.0	8.7	12.9	1.0
<b>Ukraine</b>								
2009/10	5.0	2.4	11.8	0.0	6.2	3.9	5.6	1.1
2010/11	4.3	2.0	8.5	0.0	2.8	4.4	6.0	0.8
2011/12	3.7	2.5	9.1	0.0	2.8	4.0	5.6	1.5
2012/13	3.3	2.0	6.6	0.0	2.0	3.7	5.3	0.9
<b>Uzbekistan</b>								
2009/10	0.1	3.2	0.2	0.0	0.0	0.2	0.3	0.0
2010/11	0.1	3.2	0.2	0.0	0.0	0.2	0.3	0.0
2011/12	0.1	3.2	0.2	0.0	0.0	0.2	0.3	0.0
2012/13	0.1	3.2	0.2	0.1	0.0	0.2	0.3	0.0
<b>Other Former Soviet Union - 12</b>								
2009/10	1.3	2.7	3.5	0.1	0.0	2.8	3.6	0.5
2010/11	1.4	2.4	3.3	0.2	0.0	2.6	3.4	0.5
2011/12	1.3	2.5	3.2	0.2	0.0	2.6	3.4	0.4
2012/13	1.3	2.5	3.4	0.2	0.1	2.6	3.4	0.5
<b>Total Former Soviet Union - 12</b>								
2009/10	16.0	2.3	36.0	0.2	9.3	20.7	28.1	4.4
2010/11	12.3	1.8	21.7	0.7	3.3	13.9	20.7	2.9
2011/12	14.3	2.2	32.1	0.7	7.1	18.0	25.3	3.1
2012/13	14.4	1.8	26.2	0.7	4.3	16.4	23.3	2.4

## Former Soviet Union: Grain Supply and Demand (Corn)

Millions of Tons/Hectares

Country Mktg Year	Area Harvested	Yield	Production	MY Imports	MY Exports	Feed and Residual	Total Consumpti	Ending Stocks
<b>Former Soviet Union - 12</b>								
<b>Kazakhstan</b>								
2009/10	0.1	4.7	0.5	0.0	0.0	0.3	0.4	0.0
2010/11	0.1	5.1	0.5	0.0	0.0	0.4	0.5	0.1
2011/12	0.1	4.9	0.5	0.0	0.0	0.4	0.5	0.0
2012/13	0.1	5.0	0.5	0.0	0.0	0.4	0.5	0.0
<b>Russia</b>								
2009/10	1.1	3.5	4.0	0.0	0.4	3.2	3.7	0.1
2010/11	1.0	3.0	3.1	0.1	0.0	2.8	3.2	0.1
2011/12	1.6	4.3	6.7	0.1	2.2	3.8	4.5	0.1
2012/13	1.9	3.7	7.0	0.1	1.5	4.7	5.5	0.2
<b>Ukraine</b>								
2009/10	2.1	5.0	10.5	0.0	5.1	5.0	5.7	0.7
2010/11	2.6	4.5	11.9	0.0	5.0	5.4	6.5	1.1
2011/12	3.5	6.4	22.8	0.1	14.5	7.0	8.3	1.2
2012/13	4.5	4.7	21.0	0.1	12.5	7.0	8.5	1.3
<b>Uzbekistan</b>								
2009/10	0.0	4.6	0.2	0.0	0.0	0.2	0.2	0.0
2010/11	0.0	4.6	0.2	0.0	0.0	0.2	0.2	0.0
2011/12	0.0	4.6	0.2	0.0	0.0	0.2	0.2	0.0
2012/13	0.0	3.4	0.1	0.0	0.0	0.1	0.1	0.0
<b>Other Former Soviet Union - 12</b>								
2009/10	0.8	3.3	2.6	0.2	0.1	2.6	2.9	0.7
2010/11	0.8	3.7	2.9	0.2	0.2	2.7	2.9	0.6
2011/12	0.8	4.2	3.5	0.2	0.3	3.0	3.3	0.7
2012/13	0.9	3.7	3.4	0.1	0.4	3.0	3.3	0.5
<b>Total Former Soviet Union - 12</b>								
2009/10	4.1	4.3	17.7	0.3	5.6	11.3	12.9	1.5
2010/11	4.6	4.0	18.5	0.3	5.2	11.4	13.3	1.9
2011/12	6.1	5.5	33.7	0.3	17.0	14.3	16.8	2.1
2012/13	7.5	4.3	32.1	0.2	14.4	15.2	18.0	2.0

**Wheat Supply and Disappearance: Selected Exporters**  
**Million Metric Tons/Hectares**

Country Mktg Year	Area Harvested	Yield	Production	MY Imports	MY Exports	Feed and Residual	Total Consumpti	Ending Stocks
<b>Wheat Competitors</b>								
<b>Argentina</b>								
2004/05	6.4	2.6	16.9	0.0	11.9	0.1	5.4	1.3
2005/06	5.5	2.5	13.8	0.0	9.6	0.0	5.1	0.4
2006/07	6.2	2.6	16.3	0.0	10.7	0.1	5.4	0.6
2007/08	6.6	2.8	18.6	0.0	11.2	0.1	5.7	2.4
2008/09	5.3	2.1	11.0	0.0	6.8	0.0	5.3	1.3
2009/10	4.0	3.0	12.0	0.0	5.1	0.0	5.8	2.3
2010/11	4.8	3.5	16.7	0.0	9.5	0.1	6.0	3.6
2011/12	5.0	3.0	15.0	0.0	11.8	0.1	6.0	0.9
2012/13	3.8	3.0	11.5	0.0	5.5	0.1	6.0	0.9
<b>Australia</b>								
2004/05	13.4	1.6	21.9	0.1	14.7	3.2	6.0	6.7
2005/06	12.5	2.0	25.2	0.1	16.0	3.7	6.6	9.4
2006/07	11.8	0.9	10.8	0.1	8.7	4.5	7.4	4.2
2007/08	12.6	1.1	13.6	0.1	7.5	3.5	6.5	3.9
2008/09	13.5	1.6	21.4	0.1	14.7	4.2	7.3	3.4
2009/10	13.9	1.6	21.8	0.1	14.8	1.9	4.9	5.6
2010/11	13.6	2.0	27.9	0.1	18.7	3.0	6.1	8.8
2011/12	14.1	2.1	29.5	0.1	24.0	3.5	6.7	7.7
2012/13	13.5	1.9	26.0	0.1	21.0	3.5	6.7	6.1
<b>Canada</b>								
2004/05	9.4	2.6	24.8	0.3	14.9	3.8	8.2	7.9
2005/06	9.4	2.7	25.7	0.3	16.0	3.8	8.2	9.7
2006/07	9.7	2.6	25.3	0.3	19.4	4.5	9.0	6.9
2007/08	8.6	2.3	20.1	0.4	16.1	2.2	6.8	4.4
2008/09	10.0	2.9	28.6	0.4	18.9	3.2	8.0	6.5
2009/10	9.6	2.8	26.8	0.4	19.0	2.2	6.9	7.8
2010/11	8.3	2.8	23.2	0.4	16.6	2.8	7.7	7.2
2011/12	8.5	3.0	25.3	0.5	17.5	5.5	10.4	5.0
2012/13	9.4	2.9	27.0	0.4	19.5	2.7	7.9	5.1
<b>Total Wheat Competitors</b>								
2004/05	29.2	2.2	63.6	0.3	41.5	7.1	19.6	15.9
2005/06	27.3	2.4	64.7	0.4	41.7	7.5	19.9	19.4
2006/07	27.7	1.9	52.4	0.4	38.9	9.1	21.7	11.6
2007/08	27.8	1.9	52.2	0.5	34.8	5.8	18.9	10.6

## Wheat Supply and Disappearance: Selected Exporters (Continued)

Million Metric Tons/Hectares

Country Mktg Year	Area Harvested	Yield	Production	MY Imports	MY Exports	Feed and Residual	Total Consumpti	Ending Stocks
2008/09	28.8	2.1	61.0	0.5	40.4	7.4	20.6	11.2
2009/10	27.5	2.2	60.7	0.5	39.0	4.1	17.7	15.8
2010/11	26.7	2.5	67.8	0.6	44.7	5.9	19.8	19.6
2011/12	27.6	2.5	69.8	0.6	53.3	9.1	23.1	13.6
2012/13	26.7	2.4	64.5	0.5	46.0	6.3	20.6	12.0
<b>India</b>								
2004/05	26.6	2.7	72.2	0.0	2.1	2.4	72.8	4.1
2005/06	26.5	2.6	68.6	0.0	0.8	2.2	70.0	2.0
2006/07	26.4	2.6	69.4	6.7	0.1	2.3	73.5	4.5
2007/08	28.0	2.7	75.8	2.0	0.0	2.5	76.4	5.8
2008/09	28.2	2.8	78.6	0.0	0.0	2.5	70.9	13.4
2009/10	27.8	2.9	80.7	0.2	0.1	2.4	78.2	16.1
2010/11	28.5	2.8	80.8	0.3	0.1	2.9	81.8	15.4
2011/12	29.4	3.0	86.9	0.0	0.8	3.1	81.6	20.0
2012/13	29.7	3.2	93.9	0.0	4.5	3.8	86.9	22.5
<b>Turkey</b>								
2004/05	8.6	2.2	18.5	0.4	2.0	1.0	16.8	1.8
2005/06	8.6	2.2	18.5	0.1	3.2	0.4	16.1	1.1
2006/07	8.6	2.0	17.5	1.7	2.4	0.8	16.7	1.3
2007/08	7.7	2.0	15.5	2.2	1.7	0.8	16.8	0.4
2008/09	7.7	2.2	16.8	3.5	2.2	0.7	16.9	1.5
2009/10	7.8	2.4	18.5	3.2	4.3	0.8	17.1	1.8
2010/11	8.0	2.1	17.0	3.7	3.0	0.8	17.3	2.2
2011/12	7.7	2.4	18.8	3.8	3.7	1.4	18.1	3.1
2012/13	7.8	2.0	15.8	3.5	3.2	0.7	17.5	1.6

**Corn Supply and Disappearance: Selected Exporters**  
**Million Metric Tons/Hectares**

Country Mktg Year	Area Harvested	Yield	Production	MY Imports	MY Exports	Feed and Residual	Total Consumpti	Ending Stocks
<b>Argentina</b>								
2004/05	2.8	7.4	20.5	0.0	14.6	3.5	5.2	1.1
2005/06	2.4	6.5	15.8	0.0	9.5	4.4	6.2	1.3
2006/07	2.8	8.0	22.5	0.0	15.3	4.8	6.7	1.8
2007/08	3.4	6.5	22.0	0.0	14.8	4.9	6.8	2.2
2008/09	2.5	6.2	15.5	0.0	10.3	4.5	6.4	1.0
2009/10	3.0	8.3	25.0	0.0	16.5	5.0	6.9	2.6
2010/11	3.8	6.7	25.2	0.0	16.3	5.3	7.3	4.1
2011/12	3.6	5.8	21.0	0.0	16.0	5.6	7.7	1.4
2012/13	3.8	7.4	28.0	0.0	18.5	6.0	8.8	2.2
<b>Brazil</b>								
2004/05	11.6	3.0	35.0	0.5	0.7	32.1	38.5	4.2
2005/06	12.9	3.2	41.7	1.1	4.5	33.0	39.5	3.0
2006/07	14.0	3.6	51.0	1.4	10.8	34.5	41.0	3.6
2007/08	14.7	4.0	58.6	0.7	7.8	36.0	42.5	12.6
2008/09	14.1	3.6	51.0	1.1	7.1	38.5	45.5	12.1
2009/10	12.9	4.3	56.1	0.4	11.6	40.0	47.0	10.0
2010/11	13.8	4.2	57.4	0.8	8.4	42.5	49.5	10.3
2011/12	15.2	4.8	72.8	0.8	14.0	46.0	54.0	15.9
2012/13	16.0	4.4	70.0	0.8	14.0	47.5	56.0	16.7
<b>China</b>								
2004/05	25.4	5.1	130.3	0.0	7.6	98.0	131.0	36.6
2005/06	26.4	5.3	139.4	0.1	3.7	101.0	137.0	35.3
2006/07	28.5	5.3	151.6	0.0	5.3	104.0	145.0	36.6
2007/08	29.5	5.2	152.3	0.0	0.5	106.0	150.0	38.4
2008/09	29.9	5.6	165.9	0.0	0.2	108.0	153.0	51.2
2009/10	31.2	5.3	164.0	1.3	0.2	118.0	165.0	51.3
2010/11	32.5	5.5	177.2	1.0	0.1	128.0	180.0	49.4
2011/12	33.4	5.8	192.8	5.0	0.1	131.0	188.0	59.1
2012/13	34.3	5.8	200.0	2.0	0.2	139.0	201.0	59.9
<b>South Africa</b>								
2004/05	3.2	3.6	11.7	0.4	2.1	5.0	9.7	3.2
2005/06	2.0	3.4	6.9	0.9	0.5	4.0	8.2	2.3
2006/07	2.9	2.5	7.3	1.1	0.5	4.4	8.6	1.7
2007/08	3.3	4.0	13.2	0.0	2.2	4.3	9.6	3.1
2008/09	2.9	4.3	12.6	0.0	1.7	4.3	9.9	4.1
2009/10	3.3	4.1	13.4	0.0	2.1	4.6	10.3	5.2

## Corn Supply and Disappearance: Selected Exporters (Continued)

Million Metric Tons/Hectares

Country Mktg Year	Area Harvested	Yield	Production	MY Imports	MY Exports	Feed and Residual	Total Consumpti	Ending Stocks
2010/11	2.9	3.8	10.9	0.4	2.4	5.0	10.7	3.4
2011/12	3.2	3.6	11.5	0.0	1.5	5.0	10.7	2.7
2012/13	3.3	4.1	13.5	0.0	2.5	5.1	11.1	2.7
<b>Total Corn Competitors</b>								
2004/05	43.0	4.6	197.5	0.9	25.0	138.6	184.4	45.1
2005/06	43.7	4.7	203.8	2.1	18.3	142.4	190.9	41.8
2006/07	48.2	4.8	232.4	2.6	31.9	147.7	201.3	43.6
2007/08	50.9	4.8	246.1	0.8	25.3	151.2	208.9	56.3
2008/09	49.4	5.0	245.0	1.2	19.3	155.3	214.8	68.4
2009/10	50.4	5.1	258.5	1.7	30.3	167.6	229.2	69.0
2010/11	52.9	5.1	270.8	2.2	27.3	180.8	247.5	67.2
2011/12	55.4	5.4	298.1	5.8	31.6	187.6	260.4	79.2
2012/13	57.4	5.4	311.5	2.8	35.2	197.6	276.9	81.4

**Barley Supply and Disappearance: Selected Exporters**  
**Million Metric Tons/Hectares**

Country Mktg Year	Area Harvested	Yield	Production	MY Imports	MY Exports	Feed and Residual	Total Consumpti	Ending Stocks
<b>Australia</b>								
2004/05	4.6	1.7	7.7	0.0	4.3	2.5	3.5	1.9
2005/06	4.4	2.2	9.5	0.0	5.3	2.5	3.5	2.6
2006/07	4.2	1.0	4.3	0.0	1.9	2.9	4.0	1.0
2007/08	4.9	1.5	7.2	0.0	3.4	2.1	3.1	1.7
2008/09	5.0	1.6	8.0	0.0	3.2	2.9	4.0	2.4
2009/10	4.4	1.8	7.9	0.0	3.9	3.3	4.5	1.9
2010/11	3.7	2.2	8.1	0.0	4.7	3.0	4.3	1.1
2011/12	4.0	2.1	8.5	0.0	5.0	2.5	3.8	0.8
2012/13	3.8	2.1	8.0	0.0	4.1	2.7	4.0	0.7
<b>Canada</b>								
2004/05	3.8	3.3	12.6	0.1	1.2	8.8	10.1	3.4
2005/06	3.6	3.2	11.7	0.0	2.3	8.4	9.6	3.3
2006/07	3.2	3.0	9.6	0.0	1.2	8.8	10.2	1.5
2007/08	4.0	2.7	11.0	0.1	3.0	6.6	7.9	1.6
2008/09	3.5	3.4	11.8	0.0	1.5	7.7	9.1	2.8
2009/10	2.9	3.3	9.5	0.0	1.3	7.3	8.5	2.6
2010/11	2.4	3.2	7.6	0.0	1.2	6.4	7.6	1.4
2011/12	2.4	3.3	7.8	0.1	1.3	6.2	7.2	0.8
2012/13	2.6	3.2	8.5	0.1	1.2	6.2	7.2	0.9
<b>EU-27</b>								
2004/05	13.7	4.7	64.1	0.3	3.3	38.6	54.6	11.1
2005/06	13.8	4.0	54.8	0.1	3.3	38.2	54.1	8.5
2006/07	13.8	4.1	56.2	0.2	3.5	38.7	55.7	5.8
2007/08	13.8	4.2	57.5	0.3	3.8	38.7	54.2	5.7
2008/09	14.5	4.5	65.5	0.3	3.6	41.5	57.0	10.9
2009/10	13.9	4.5	62.1	0.1	1.1	41.5	56.5	15.5
2010/11	12.5	4.3	53.5	0.2	4.9	41.2	56.4	8.0
2011/12	11.9	4.3	51.5	0.4	3.0	36.5	51.7	5.1
2012/13	12.5	4.2	52.9	0.2	2.4	37.0	52.2	3.6

**Sorghum Supply and Disappearance: Selected Exporters**  
**Million Metric Tons/Hectares**

Country Mktg Year	Area Harvested	Yield	Production	MY Imports	MY Exports	Feed and Residual	Total Consumpti	Ending Stocks
<b>Argentina</b>								
2004/05	0.6	5.2	2.9	0.0	0.4	2.4	2.6	0.4
2005/06	0.5	4.7	2.3	0.0	0.2	2.1	2.3	0.2
2006/07	0.6	4.7	2.8	0.0	1.1	1.5	1.7	0.2
2007/08	0.6	4.7	2.9	0.0	1.2	1.0	1.2	0.7
2008/09	0.5	3.7	1.7	0.0	1.1	1.0	1.1	0.2
2009/10	0.8	4.8	3.6	0.0	1.8	1.7	1.9	0.2
2010/11	1.0	4.4	4.4	0.0	1.7	2.1	2.3	0.6
2011/12	1.0	4.0	4.0	0.0	1.8	2.2	2.4	0.5
2012/13	1.1	4.6	4.8	0.0	2.4	2.3	2.5	0.4
<b>Australia</b>								
2004/05	0.8	2.7	2.0	0.0	0.2	1.8	1.8	0.1
2005/06	0.8	2.5	1.9	0.0	0.1	1.9	1.9	0.0
2006/07	0.6	2.1	1.3	0.0	0.1	1.2	1.2	0.0
2007/08	0.9	4.0	3.8	0.0	0.8	2.2	2.2	0.8
2008/09	0.8	3.5	2.7	0.0	1.0	1.8	1.8	0.7
2009/10	0.5	3.0	1.5	0.0	0.3	1.2	1.2	0.7
2010/11	0.7	3.1	2.1	0.0	0.9	1.4	1.4	0.5
2011/12	0.6	4.1	2.7	0.0	1.2	1.4	1.4	0.5
2012/13	0.6	3.9	2.5	0.0	1.1	1.5	1.5	0.4



## U.S. Grains Supply and Distribution: Wheat, Corn, Sorghum, Barley, Oats, Rye, and Rice

Thousand Metric Tons/Hectares

	Area Harvested	Yield	Rough Production	Production	Imports	TY Imports	Exports	TY Exports	Feed Dom. Consumption	Domestic Consumption	Ending Stocks
<b>Wheat</b>											
2010/11	19,271	3	nr	60,062	2,638	2,571	35,076	35,977	3,589	30,710	23,466
2011/12	18,496	3	nr	54,413	3,050	3,100	28,563	28,100	4,443	32,153	20,213
2012/13	19,759	3	nr	61,732	3,538	3,500	32,659	32,500	5,987	33,829	18,995
<b>Corn</b>											
2010/11	32,960	10	nr	316,165	703	684	46,590	45,244	121,746	285,014	28,644
2011/12	33,986	9	nr	313,918	635	650	39,372	39,000	115,575	277,889	25,936
2012/13	35,354	8	nr	273,789	1,905	1,900	33,022	33,500	103,510	252,106	16,502
<b>Sorghum</b>											
2010/11	1,948	5	nr	8,779	2	2	3,853	3,827	3,119	5,279	697
2011/12	1,590	3	nr	5,447	3	3	1,397	1,400	1,905	4,064	686
2012/13	2,063	3	nr	6,290	0	0	2,540	2,500	1,778	3,811	625
<b>Barley</b>											
2010/11	998	4	nr	3,925	207	148	165	181	1,085	4,537	1,945
2011/12	906	4	nr	3,392	354	400	192	150	816	4,191	1,308
2012/13	1,323	4	nr	4,812	544	500	218	200	1,742	5,116	1,330
<b>Oats</b>											
2010/11	511	2	nr	1,178	1,468	1,468	41	37	1,715	2,789	982
2011/12	380	2	nr	779	1,621	1,600	35	40	1,445	2,549	798
2012/13	442	2	nr	966	1,637	1,600	44	40	1,492	2,595	762
<b>Rye</b>											
2010/11	107	2	nr	189	141	148	4	3	93	330	20
2011/12	98	2	nr	161	151	150	4	3	80	317	11
2012/13	111	2	nr	192	141	150	5	5	84	321	18
<b>Rice, Milled</b>											
2010/11	1,463	8	11,027	7,593	582	621	3,528	3,247	nr	4,317	1,514
2011/12	1,059	8	8,391	5,874	635	725	3,239	3,500	nr	3,721	1,063
2012/13	1,068	8	8,616	6,053	667	750	2,932	3,100	nr	3,945	906

Notes: Wheat Trade Year (TY) statistics are on July/June years. Barley, corn, sorghum, rye and oats Trade Year (TY) statistics are on Oct/Sept years. Rice Trade Year (TY) statistics are for the subsequent calendar year; 'Imports' and 'Exports' columns contain data on the local marketing year: wheat, barley, oats and rye are June/May; corn and sorghum are Sept/Aug; rice is Aug/July.

**Total Wheat and Coarse Grains: Supply and Demand**

**Millions of Metric Tons/Hectares**

	<b>Area Harvested</b>	<b>Yield</b>	<b>Production</b>	<b>TY Exports</b>	<b>Feed Dom. Consumpti</b>	<b>Domestic Consumpti</b>	<b>Ending Stocks</b>
<b>Wheat and Coarse Grains</b>							
1983/84	563.8	2.1	1,162.5	193.2	589.7	1,216.1	278.5
1984/85	567.0	2.3	1,315.0	203.6	611.3	1,253.5	340.0
1985/86	570.9	2.3	1,328.5	165.2	614.5	1,247.9	420.6
1986/87	565.6	2.4	1,348.0	174.7	645.7	1,299.4	469.2
1987/88	544.8	2.4	1,285.9	202.2	656.5	1,329.8	423.1
1988/89	542.4	2.2	1,218.1	203.3	619.4	1,302.0	339.3
1989/90	548.9	2.4	1,327.4	208.9	644.4	1,346.2	320.5
1990/91	546.4	2.6	1,417.6	190.1	668.7	1,369.5	368.7
1991/92	544.1	2.5	1,355.7	207.5	651.4	1,364.9	359.5
1992/93	546.5	2.6	1,431.6	205.2	662.9	1,389.1	399.2
1993/94	536.6	2.5	1,356.1	188.2	655.6	1,389.2	366.1
1994/95	534.6	2.6	1,392.5	200.1	668.7	1,396.0	362.6
1995/96	527.7	2.5	1,338.5	187.5	639.9	1,381.9	319.1
1996/97	546.6	2.7	1,490.5	198.4	672.6	1,442.9	366.7
1997/98	535.9	2.8	1,491.6	190.3	683.1	1,444.7	413.6
1998/99	521.0	2.8	1,481.9	198.7	682.5	1,448.1	447.5
1999/00	507.0	2.9	1,464.9	214.3	688.0	1,468.0	443.8
2000/01	510.4	2.8	1,446.7	205.1	697.4	1,471.5	419.1
2001/02	513.8	2.9	1,480.2	208.5	711.0	1,495.5	403.7
2002/03	503.6	2.9	1,443.2	209.6	708.8	1,505.7	341.3
2003/04	511.9	2.9	1,471.2	206.2	714.4	1,533.7	278.8
2004/05	515.7	3.2	1,642.2	214.7	754.3	1,585.1	336.0
2005/06	518.9	3.1	1,599.2	222.8	754.5	1,615.4	319.7
2006/07	516.3	3.1	1,584.8	230.4	745.1	1,629.3	275.3
2007/08	533.2	3.2	1,692.6	245.7	759.0	1,675.3	292.6
2008/09	536.9	3.3	1,795.5	254.2	770.0	1,725.2	362.9
2009/10	532.0	3.4	1,798.8	254.6	776.3	1,763.9	397.8
2010/11	521.3	3.4	1,749.8	249.9	771.6	1,784.5	363.1
2011/12	532.9	3.5	1,844.2	276.3	804.1	1,841.2	366.1
2012/13	536.5	3.3	1,784.2	252.6	794.0	1,821.1	329.3

Notes: Wheat and coarse grains trade data are on July/June years through 1975/76. From 1976/77 to the present, coarse grains data are on an Oct/Sept trade year.

## World Wheat and Coarse Grains: Supply and Demand

Millions of Metric Tons/Hectares

	Area Harvested	Yield	Production	TY Exports	Feed Dom. Consumpti	Domestic Consumpti	Ending Stocks
<b>Wheat</b>							
1990/91	231.0	2.5	588.8	101.3	131.5	554.3	171.6
1991/92	222.8	2.4	543.5	111.4	115.1	551.8	163.2
1992/93	222.1	2.5	562.6	113.2	111.6	547.7	177.9
1993/94	221.0	2.5	558.5	101.7	109.6	553.0	183.4
1994/95	213.3	2.5	523.0	101.5	101.4	542.1	164.2
1995/96	216.7	2.5	537.5	99.2	95.2	546.1	155.7
1996/97	227.1	2.6	581.5	104.0	99.6	573.4	163.8
1997/98	226.4	2.7	610.2	104.5	103.8	576.7	197.2
1998/99	219.2	2.7	590.4	102.0	106.8	578.3	209.4
1999/00	212.8	2.8	586.8	111.9	102.7	585.5	210.7
2000/01	215.7	2.7	583.1	102.4	108.8	586.7	207.1
2001/02	214.5	2.7	583.6	108.0	109.4	586.5	204.2
2002/03	213.8	2.7	569.6	106.8	113.7	604.5	169.2
2003/04	207.8	2.7	555.3	103.6	99.1	588.9	135.6
2004/05	216.1	2.9	626.7	113.4	108.7	606.3	156.0
2005/06	218.7	2.8	618.8	114.1	114.8	621.2	153.5
2006/07	212.2	2.8	596.1	115.6	110.1	615.7	133.9
2007/08	217.1	2.8	611.9	116.8	102.1	617.6	128.2
2008/09	224.6	3.0	682.8	143.5	121.2	643.1	167.8
2009/10	225.8	3.0	686.2	135.6	119.8	653.4	200.6
2010/11	218.2	3.0	651.9	133.7	116.4	654.5	198.0
2011/12	221.7	3.1	695.2	151.6	145.6	695.6	197.6
2012/13	218.8	3.0	662.8	136.7	134.1	683.2	177.2
<b>Coarse Grains</b>							
1990/91	315.3	2.6	828.8	88.9	537.3	815.2	197.1
1991/92	321.3	2.5	812.2	96.2	536.2	813.1	196.3
1992/93	324.4	2.7	868.9	91.9	551.3	841.4	221.3
1993/94	315.6	2.5	797.6	86.5	546.1	836.2	182.7
1994/95	321.3	2.7	869.4	98.6	567.4	853.8	198.3
1995/96	311.0	2.6	800.9	88.3	544.7	835.8	163.4
1996/97	319.5	2.8	909.1	94.4	573.0	869.5	203.0
1997/98	309.4	2.8	881.4	85.8	579.2	867.9	216.4
1998/99	301.8	3.0	891.5	96.7	575.7	869.7	238.1
1999/00	294.2	3.0	878.1	102.4	585.2	882.6	233.1
2000/01	294.7	2.9	863.7	102.7	588.7	884.7	212.0
2001/02	299.3	3.0	896.6	100.5	601.6	909.0	199.6
2002/03	289.8	3.0	873.6	102.8	595.1	901.2	172.1
2003/04	304.1	3.0	916.0	102.6	615.3	944.8	143.3
2004/05	299.6	3.4	1,015.6	101.3	645.6	978.8	180.1
2005/06	300.2	3.3	980.4	108.6	639.7	994.2	166.2
2006/07	304.1	3.3	988.7	114.7	635.0	1,013.6	141.3
2007/08	316.1	3.4	1,080.8	128.9	656.8	1,057.7	164.4
2008/09	312.3	3.6	1,112.8	110.7	648.8	1,082.1	195.1
2009/10	306.1	3.6	1,112.6	119.1	656.5	1,110.5	197.3
2010/11	303.1	3.6	1,097.9	116.2	655.2	1,130.1	165.2
2011/12	311.1	3.7	1,149.0	124.7	658.5	1,145.7	168.5
2012/13	317.7	3.5	1,121.4	116.0	659.9	1,137.8	152.1

Notes: Wheat and coarse grains trade data are on July/June years through 1975/76. From 1976/77 to the present, coarse grains data are on an Oct/Sept trade year.

## World Corn and Barley: Supply and Demand

Millions of Metric Tons/Hectares

	Area Harvested	Yield	Production	TY Exports	Feed Dom. Consumpti	Domestic Consumpti	Ending Stocks
<b>Corn</b>							
1990/91	129.1	3.7	482.0	58.8	318.5	473.4	141.4
1991/92	132.5	3.7	493.0	63.0	334.4	493.3	141.0
1992/93	133.1	4.0	535.6	62.6	348.7	512.1	162.7
1993/94	130.7	3.6	475.8	57.4	342.0	509.0	129.4
1994/95	135.2	4.1	559.3	71.9	371.5	535.6	153.2
1995/96	135.0	3.8	516.4	64.8	365.1	536.6	133.0
1996/97	141.5	4.2	593.0	66.7	387.7	560.1	165.8
1997/98	136.2	4.2	574.4	63.1	400.4	573.8	166.4
1998/99	138.9	4.4	606.0	68.7	404.3	581.5	191.0
1999/00	138.9	4.4	608.1	72.3	422.4	605.3	193.8
2000/01	137.2	4.3	591.4	75.9	427.1	610.1	175.1
2001/02	137.5	4.4	601.0	72.8	436.4	624.8	151.4
2002/03	137.3	4.4	603.2	77.0	433.2	627.5	127.0
2003/04	142.0	4.4	627.4	79.1	445.8	649.2	105.3
2004/05	145.4	4.9	715.8	76.0	476.0	689.4	131.7
2005/06	145.7	4.8	699.7	82.7	478.5	706.7	124.7
2006/07	149.5	4.8	714.0	91.5	478.7	728.5	110.3
2007/08	160.5	5.0	794.3	98.3	498.3	772.9	131.7
2008/09	158.5	5.1	801.2	84.0	481.7	784.6	148.2
2009/10	157.6	5.2	821.1	93.0	490.0	823.5	145.8
2010/11	162.9	5.1	830.8	91.9	501.3	849.1	127.5
2011/12	168.6	5.2	876.8	98.5	507.6	868.3	136.0
2012/13	175.0	4.9	849.0	90.9	508.7	861.6	123.3
<b>Barley</b>							
1990/91	72.4	2.5	179.5	19.6	130.8	175.5	31.5
1991/92	75.9	2.2	169.9	19.4	120.3	166.5	34.9
1992/93	72.6	2.3	166.3	16.4	119.0	165.6	35.0
1993/94	73.2	2.3	169.0	18.8	123.8	169.1	34.9
1994/95	72.2	2.2	160.7	15.3	120.9	165.6	30.0
1995/96	66.4	2.1	141.2	13.4	107.8	150.7	20.5
1996/97	64.2	2.4	153.1	17.9	106.3	149.5	24.1
1997/98	63.8	2.4	153.9	12.8	104.1	145.8	32.2
1998/99	56.6	2.4	136.0	17.8	99.5	139.3	29.0
1999/00	52.1	2.4	127.4	17.8	94.0	132.5	23.9
2000/01	53.2	2.5	133.1	16.2	94.6	134.4	22.6
2001/02	55.9	2.6	143.5	17.2	95.5	136.8	29.3
2002/03	55.0	2.4	134.4	16.3	95.0	136.1	27.5
2003/04	58.5	2.4	142.2	14.8	102.7	146.3	23.4
2004/05	57.7	2.6	152.2	17.0	100.2	142.6	33.0
2005/06	55.6	2.5	136.2	17.5	97.5	141.1	28.1
2006/07	56.6	2.4	137.0	14.6	98.4	143.7	21.4
2007/08	56.1	2.4	133.1	18.6	91.3	134.1	20.4
2008/09	55.5	2.8	155.0	18.2	100.1	144.1	31.4
2009/10	54.4	2.8	150.8	17.3	100.7	144.7	37.5
2010/11	47.6	2.6	122.9	15.2	91.5	136.1	24.3
2011/12	49.9	2.7	133.9	18.9	91.3	136.6	21.6
2012/13	51.2	2.6	130.8	16.6	89.5	133.3	19.1

Notes: Coarse grains trade data are on July/June years through 1975/76. From 1976/77 to the present, coarse grains data are on an Oct/Sept trade year.

## World Rice: Supply and Demand

Millions of Metric Tons/Hectares

	Area Harvested	Yield	Rough Production	Production	TY Exports	Domestic Consumpti	Ending Stocks
<b>Rice, Milled</b>							
1983/84	144.6	3.1	450.9	306.9	11.9	294.4	69.3
1984/85	144.1	3.2	464.9	316.8	11.0	298.4	87.7
1985/86	144.7	3.2	467.3	318.0	11.8	308.0	97.7
1986/87	144.8	3.2	464.6	316.1	12.9	310.4	103.3
1987/88	141.4	3.3	464.8	315.1	11.4	313.1	105.3
1988/89	146.6	3.3	490.8	332.1	14.0	325.7	111.7
1989/90	147.8	3.5	510.3	345.2	11.7	336.3	120.6
1990/91	147.0	3.5	519.4	351.4	12.3	345.3	126.7
1991/92	147.5	3.5	522.8	353.2	14.4	353.2	126.7
1992/93	146.5	3.6	524.2	354.0	14.9	357.5	123.2
1993/94	145.3	3.6	526.1	354.7	16.6	358.9	119.0
1994/95	147.3	3.7	539.9	364.1	20.8	365.5	117.6
1995/96	148.4	3.7	547.3	368.8	19.7	368.3	118.1
1996/97	150.1	3.8	565.3	381.4	18.9	379.2	120.3
1997/98	151.7	3.8	575.2	387.4	27.6	380.0	127.7
1998/99	153.1	3.8	587.0	394.9	24.8	388.6	134.0
1999/00	155.9	3.9	608.6	409.2	22.8	400.1	143.1
2000/01	152.4	3.9	594.1	399.3	24.4	395.6	146.7
2001/02	151.4	3.9	594.3	399.5	27.8	413.3	132.9
2002/03	146.9	3.8	563.1	378.2	27.5	408.1	103.0
2003/04	149.3	3.9	585.1	392.3	27.3	413.7	81.6
2004/05	151.8	3.9	596.6	400.9	29.0	408.5	74.0
2005/06	153.9	4.0	621.4	417.3	29.1	414.6	76.7
2006/07	154.5	4.0	624.7	419.9	31.9	421.3	75.4
2007/08	155.1	4.1	642.5	432.9	29.6	427.5	80.8
2008/09	158.2	4.2	667.7	448.7	29.4	437.1	92.4
2009/10	156.1	4.2	657.2	441.3	31.5	438.5	95.2
2010/11	157.7	4.3	670.5	449.4	36.2	445.9	98.6
2011/12	158.9	4.4	693.3	465.0	35.7	458.6	105.0
2012/13	158.8	4.3	690.6	463.2	35.5	466.4	101.8

Notes: Stocks, exports and consumption are expressed on a milled basis in marketing years.

---

## **ENDNOTES TO GRAIN: WORLD MARKETS AND TRADE**

### **REGIONAL TABLES**

**North America:** Canada, Mexico, the United States.

**Central America:** Belize, Costa Rica, El Salvador, Guatemala, Honduras, Nicaragua, Panama.

**Caribbean:** Anguilla, Antigua and Barbuda, Aruba, Bahamas, Barbados, Bermuda, British Virgin Islands, Cayman Islands, Cuba, Dominica, Dominican Republic, French West Indies, Grenada, Guadeloupe, Haiti, Jamaica and Dep, Leeward-Windward Islands, Martinique, Montserrat, Netherlands Antilles, Puerto Rico, Kitts and Nevis, St. Lucia, St. Vincent and the Grenadines, Trinidad and Tobago, Turks and Caicos Islands, Virgin Islands of the U.S.

**South America:** Argentina, Bolivia, Brazil, Chile, Colombia, Ecuador, Falkland Islands (Islas Malvinas), French Guiana, Guyana, Paraguay, Peru, Suriname, Uruguay, Venezuela.

**EU:** Austria, Belgium/Luxembourg, Bulgaria, Cyprus, Czech Republic, Denmark, Estonia, Finland, France, Germany, Greece, Hungary, Ireland, Italy, Latvia, Lithuania, Malta, Netherlands, Poland, Portugal, Romania, Slovakia, Slovenia, Spain, Sweden, United Kingdom.

**Other Europe:** Albania, Azores, Bosnia and Herzegovina, Croatia, Former Yugoslavia, Gibraltar, Iceland, Macedonia, Montenegro, Norway, Serbia, Switzerland.

**Former Soviet Union:** Armenia, Azerbaijan, Belarus, Georgia, Kazakhstan, Kyrgyzstan, Moldova, Russia, Tajikistan, Turkmenistan, Ukraine, Uzbekistan.

**Middle East:** Bahrain, Iran, Iraq, Israel, Jordan, Kuwait, Lebanon, Oman, Qatar, Saudi Arabia, Syria, Turkey, United Arab Emirates, Yemen.

**North Africa:** Algeria, Egypt, Libya, Morocco, Tunisia.

**Sub-Saharan Africa:** all African countries except North Africa.

**East Asia:** China, Hong Kong, Japan, South Korea, North Korea, Macau, Mongolia, Taiwan.

**South Asia:** Afghanistan, Bangladesh, Bhutan, India, Nepal, Pakistan, Sri Lanka, Maldives.

**Southeast Asia:** Brunei, Burma, Cambodia, Indonesia, Laos, Malaysia, Philippines, Singapore, Thailand, Vietnam.

**Oceania:** Australia, Fiji, New Zealand, Papua New Guinea.

---

## **OTHER NOTES**

**Local Marketing Years (LMY):** LMY refers to the 12-month period following the main harvest, when the crop is marketed (i.e., consumed, traded, or stored). The year first listed begins a country's LMY for that commodity (2008/09 starts in 2008); except for summer grains in certain Southern Hemisphere countries and for rice in selected countries, where the second year begins the LMY (2008/09 starts in 2009). Key exporter LMY's are:

<b>Wheat</b>	<b>Corn</b>	<b>Barley</b>	<b>Sorghum</b>
Argentina (Dec/Nov)	Argentina (Mar/Feb)	Australia (Nov/Oct)	Argentina (Mar/Feb)
Australia (Oct/Sep)	Brazil (Mar/Feb)	Canada (Aug/Jul)	Australia (Mar/Feb)
Canada (Aug/Jul)	China (Oct/Sep)	EU-27 (Jul/Jun)	United States (Sep/Aug)
China (Jul/Jun)	South Africa (May/Apr)	Russia (Jul/Jun)	
EU-27 (Jul/Jun)	United States (Sep/Aug)	Ukraine (Jul/Jun)	
India (Apr/Mar)		United States (Jun/May)	
Kazakhstan (Jul/Jun)			
Russia (Jul/Jun)			
Turkey (Jun/May)			
Ukraine (Jul/Jun)			
United States (Jun/May)			

For a complete list of local marketing years, please see the FAS website (<http://www.fas.usda.gov/psdonline/psdAvailability.aspx>).

**Stocks:** Unless otherwise stated, stock data are based on an aggregate of differing local marketing years and should not be construed as representing world stock levels at a fixed point in time.

**Consumption:** World totals for consumption reflect total utilization, including food, seed, industrial, feed, and waste; as well as differences in local marketing year imports and local marketing year exports. Consumption statistics for regions and individual countries, however, reflect food, seed, industrial, feed, and waste only.

**Trade:** All PSD tables are balanced on the different local marketing years. All trade tables contain Trade Year (TY) data which puts all countries on a uniform, 12-month period for analytical comparisons: wheat is July/June; coarse grains, corn, barley, sorghum, oats, and rye are Oct/Sept; and rice is calendar year.

**EU Consolidation:** The trade figures starting from 1999/00 represent EU-27 and exclude all intra-trade. For the years 1960/61 through 1998/99, figures are the EU-15 and also exclude all intra-trade. EU-15 member states' data for grains are no longer maintained in the official USDA database. Data for the individual NMS-10, plus Bulgaria and Romania, exists only prior to 1999/00.

**Statistics:** (1) Wheat trade statistics include wheat, flour, and selected pasta products on a grain equivalent basis. (2) Rice trade statistics include rough, brown, milled, and broken on a milled

---

equivalent basis. (3) Coarse grains statistics include corn, barley, sorghum, oats, rye, millet, and mixed grains but exclude trade in barley malt, millet, and mixed grains.

**Unaccounted:** This term includes grain in transit, reporting discrepancies in some countries, and trade to countries outside the USDA database.

The Field Crops and Livestock Branch, Industry and Sector Analysis Division, Foreign Agricultural Service, USDA, Washington DC 20250, prepared this circular. Information is gathered from official statistics of foreign governments and other foreign source materials, reports of U.S. agricultural attachés and Foreign Service officers, office research, and related information. Further information may be obtained by writing the Division or telephoning (202) 720-6590.

**Note:** The previous report in this series was the Grain: World Markets and Trade Foreign Agricultural Service Circular FG 07-12 July 2012. For further details on world grain production, please see World Agricultural Production Foreign Agricultural Service Circular WAP 08-12 August 2012.

This circular is available in its entirety on the World Wide Web via the Foreign Agricultural Service Home Page. The address is: <http://www.fas.usda.gov>