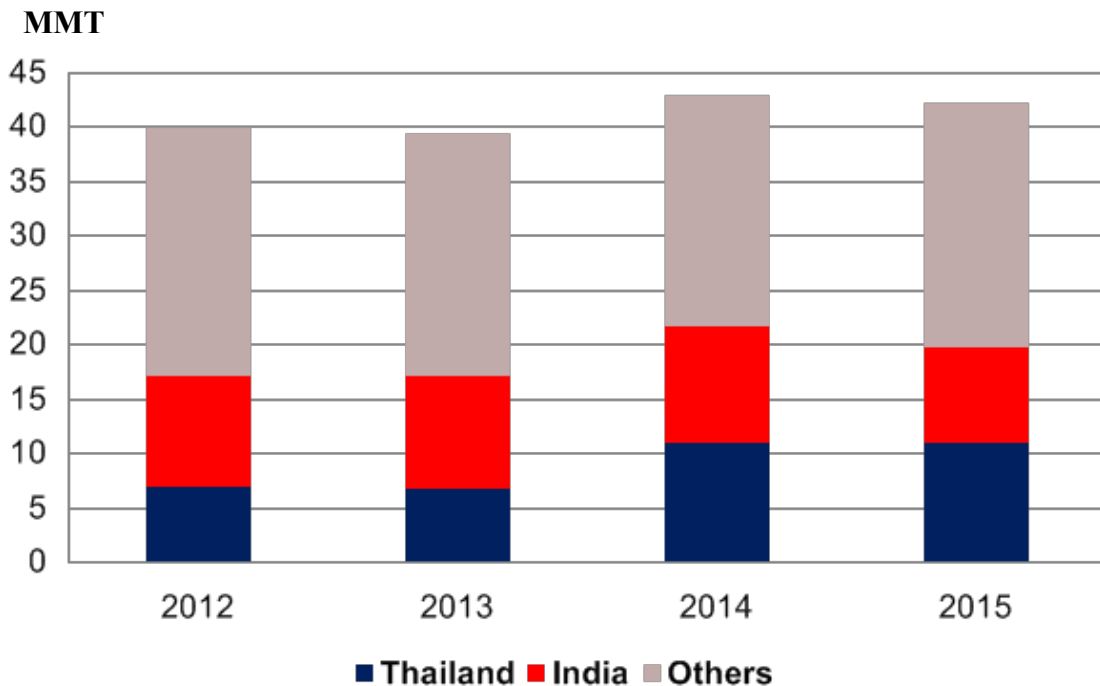




Grain: World Markets and Trade

India and Thailand Drive Record Global Rice Trade in 2014



Global rice trade expanded 9 percent to a record 43 million tons in 2014, supported by abundant exportable supplies in India and Thailand, lower prices, and strong demand. With a record crop and large stocks, India actively pursued markets overseas. Thailand also aggressively sought export opportunities to reduce massive stocks from the discontinued Paddy Pledging Scheme. Competition from these two countries pushed prices down and stimulated imports, but squeezed opportunities for other exporters, especially Vietnam, Pakistan, and the United States.

For 2015, global trade is forecast to be marginally lower as India's smaller crop and use in the Public Distribution System are expected to curb exports. Increased trade by Vietnam, Pakistan, and the United States are expected to partially offset the slowdown from India. Thailand's exports are forecast to remain strong due to government-led sales. The impact from ongoing dry weather on exportable supplies is expected to be minimal as the country has ample stocks. Global trade is forecast to remain strong spurred by declining prices.

For email subscription, click here to register: <https://public.govdelivery.com/accounts/USDAFAS/subscriber/new>

TABLE OF CONTENTS

World Markets and Trade: Commentary and Current Data	
Wheat	4
Rice	10
Coarse Grains.....	15
Historical Data Series for Selected Regions and Countries	35
Endnotes to Grain: World Markets and Trade	54

The Foreign Agricultural Service (FAS) updates its production, supply and distribution (PSD) database for cotton, oilseeds, and grains at 12:00 p.m. on the day the *World Agricultural Supply and Demand Estimates* (WASDE) report is released. This circular is released by 12:15 p.m.

To download the tables in the publication, go to Production, Supply and Distribution Database (PSD Online): (<http://apps.fas.usda.gov/psdonline/psdHome.aspx>), scroll down to Reports, and Click the plus sign [+] next to Grains.

FAS Reports and Databases:

Current *World Markets and Trade* and *World Agricultural Production* Reports:

<http://apps.fas.usda.gov/psdonline/psdDataPublications.aspx>

Archives *World Markets and Trade* and *World Agricultural Production* Reports:

<http://usda.mannlib.cornell.edu/MannUsda/viewTaxonomy.do?taxonomyID=7>

Production, Supply and Distribution Database (PSD Online):

<http://apps.fas.usda.gov/psdonline/psdHome.aspx>

Global Agricultural Trade System (U.S. Exports and Imports):

<http://apps.fas.usda.gov/gats/default.aspx>

Export Sales Report:

<http://apps.fas.usda.gov/esrquery/>

Global Agricultural Information Network (Agricultural Attaché Reports):

<http://gain.fas.usda.gov/Pages/Default.aspx>

Other USDA Reports:

World Agricultural Supply and Demand Estimates (WASDE):

<http://www.usda.gov/oce/commodity/wasde/>

Economic Research Service:

<http://www.ers.usda.gov/topics/crops>

National Agricultural Statistics Service:

<http://www.nass.usda.gov/Publications/>

All Grain Summary Comparison

Marketing Year	Wheat			Rice, Milled			Corn			
	2012/13	2013/14	2014/15	2012/13	2013/14	2014/15	2012/13	2013/14	2014/15	
Production										
United States	(Jun-May)	61.3	58.1	55.1	6.3	6.1	7.1	273.2	351.3	361.1
Other		597.2	658.0	669.9	465.7	471.0	467.5	594.8	637.7	630.2
World Total		658.5	716.1	725.0	472.0	477.1	474.6	868.0	989.0	991.3
Domestic Consumption										
United States	(Jun-May)	37.8	34.2	32.2	3.8	4.0	4.2	263.0	293.0	302.1
Other		648.9	660.8	679.7	462.0	473.5	476.3	605.7	651.9	670.3
World Total		686.7	695.0	711.9	465.8	477.5	480.5	868.7	944.9	972.4
Ending Stocks										
United States	(Jun-May)	19.5	16.1	18.8	1.2	1.0	1.3	20.9	31.3	46.4
Other		156.0	171.4	179.0	109.0	105.8	96.9	117.2	142.5	143.2
World Total		175.5	187.5	197.8	110.2	106.8	98.2	138.1	173.8	189.6
TY Imports										
United States	(Jun-May)	3.4	4.8	4.2	0.7	0.8	0.7	4.3	0.7	0.7
Other		140.2	153.8	152.4	35.8	39.7	39.3	94.5	122.3	111.1
World Total		143.6	158.6	156.6	36.5	40.5	40.0	98.8	123.0	111.8
TY Exports										
United States	(Jun-May)	27.7	31.5	25.0	3.3	3.0	3.4	18.3	50.7	44.5
Other		119.4	130.6	135.1	36.1	39.9	38.8	82.2	79.0	72.4
World Total		147.1	162.1	160.1	39.4	42.9	42.2	100.5	129.7	116.9

Note: Consumption in this table has not been adjusted for differences in marketing year imports and exports and therefore differs from global totals shown elsewhere.

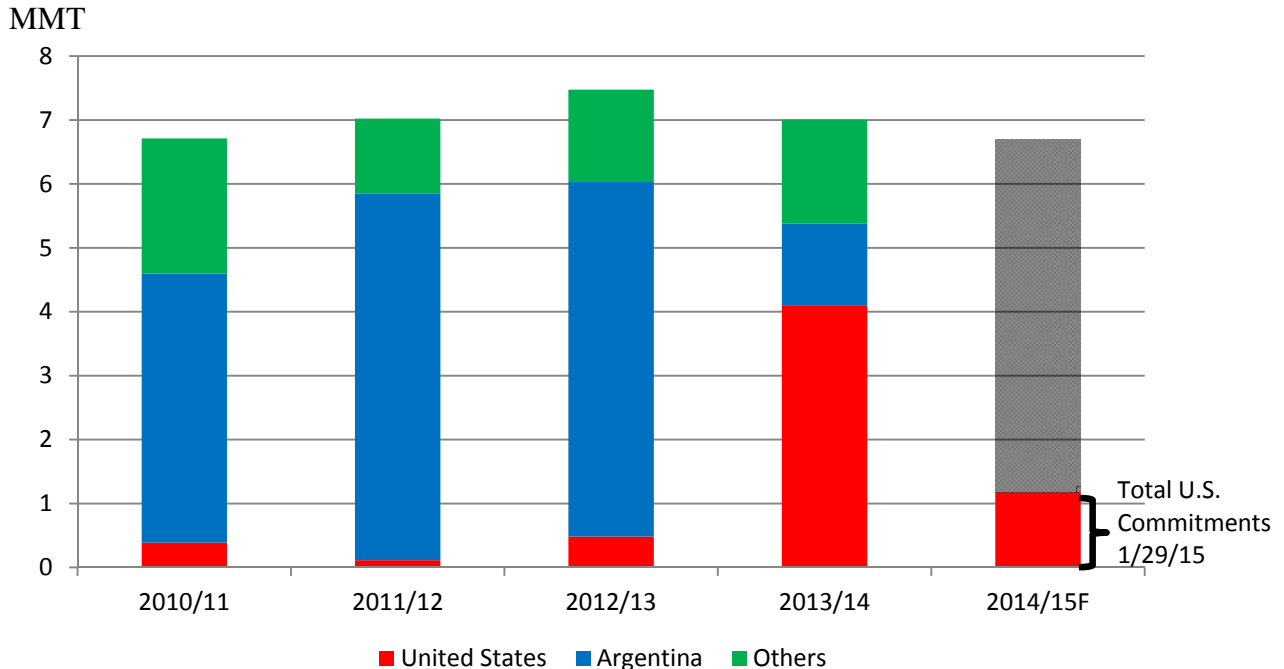
Marketing years for U.S. grains are: Wheat (Jun-May), Rice (Aug-Jul), Corn (Sep-Aug).
'Marketing Year' column is germane for U.S. wheat only.

WHEAT: WORLD MARKETS AND TRADE

OVERVIEW

Global production for 2014/15 is projected at a new record. Production is raised for Argentina, Kazakhstan, EU, Turkey, and Ukraine. Global trade is nearly unchanged as import cuts for Bangladesh, Brazil, Turkey, and the United States are more than offset by increases for Egypt, Philippines, Saudi Arabia, and Sri Lanka. Exports are cut for Australia and the United States but raised for Brazil and the EU. The U.S. season-average farm price is lowered slightly.

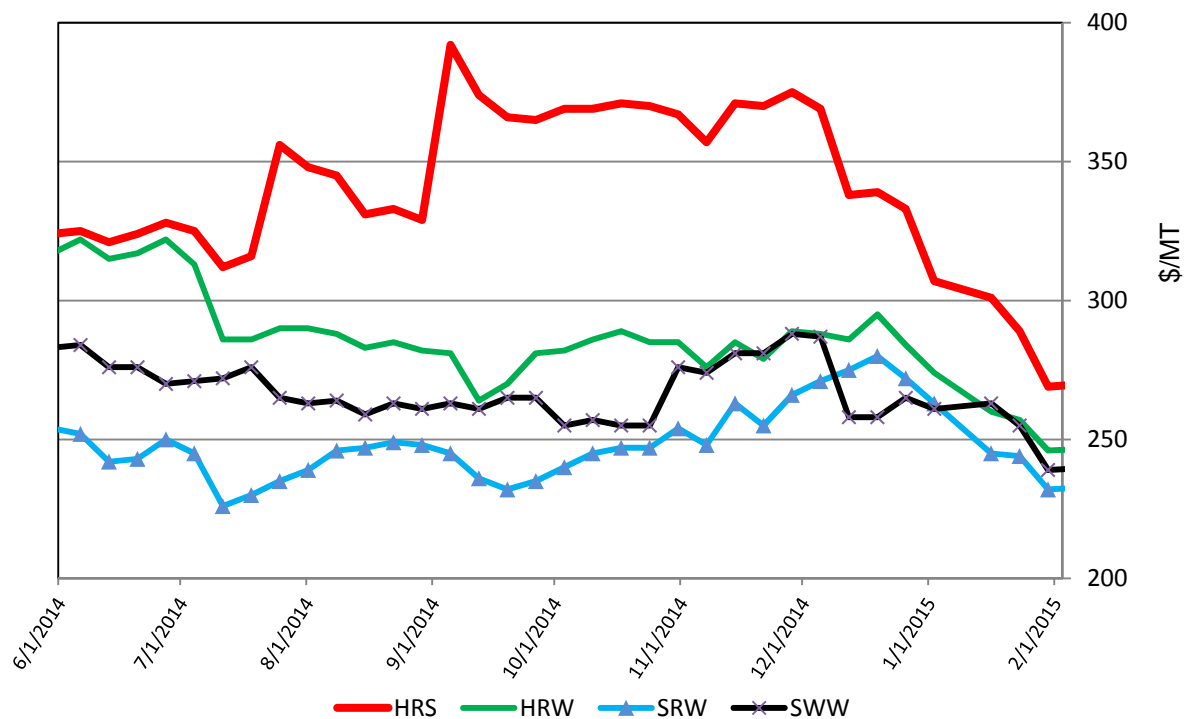
BRAZIL'S IMPORTS OF U.S. WHEAT LIKELY TO DROP AFTER RECORD YEAR



U.S. wheat exports to Brazil are likely to drop significantly in 2014/15 compared to last year on competition from traditional South American suppliers. Brazil also has record production, and imports are forecast slightly lower than last year. Argentina, Paraguay, and Uruguay have recently harvested larger crops and are expected to export more to Brazil. Mercosur exporters have freight and logistical advantages in addition to tariff-free access, while others, including the United States, are subject to a 10% import duty. The situation is very different from last year, when U.S. wheat filled an unusual gap left by short crops in both Argentina and Paraguay.

U.S. PRICES:

U.S. Weekly FOB Export Bids



Domestic: Export prices for all wheat classes continued their downward trajectory in January. Abundant global supplies, strengthening currency, and expectations of large crops again in 2015/16 pressured prices. Hard Red Spring (HRS) plunged \$38 to \$269/ton, Hard Red Winter (HRW) prices slid \$28 to \$246/ton, Soft Red Winter (SRW) fell \$31 to \$232/ton, and Soft White Winter (SWW) tumbled \$22 to \$239/ton.

TRADE CHANGES IN 2014/15

Selected Exporters

- **Australia** is cut 500,000 tons to 17.5 million because of slow early-season shipments.
- **Brazil** is up 500,000 tons to 1.5 million in light of recent large shipments of lower-quality wheat.
- **EU** is boosted 1.0 million tons to 31.0 million on the recent surge of sales to Algeria, Egypt, and Saudi Arabia. The EU is now the most competitive supplier to the Middle East and North Africa.

Grain: World Markets and Trade, February 2015

-
- **United States** is cut 500,000 tons to 25.0 million on slow shipments and reduced competitiveness.

Selected Importers

- **Bangladesh** is lowered 300,000 tons to 3.3 million on a slower-than-expected shipment pace.
- **Brazil** is trimmed 300,000 tons to 6.7 million as shipments have been below historical levels over the last several months.
- **Egypt** is raised 500,000 tons to 10.5 million on continued large purchases despite the bread subsidy change.
- **United States** is cut 500,000 tons to 4.2 million on slow shipments to date.

World Wheat, Flour, and Products Trade
July/June Year, Thousand Metric Tons

	2010/11	2011/12	2012/13	2013/14	2014/15 Jan	2014/15 Feb
TY Exports						
Argentina	7,742	11,951	7,450	1,601	6,000	6,000
Australia	18,455	23,031	21,269	18,339	18,000	17,500
Brazil	2,539	1,860	1,753	81	1,000	1,500
Canada	16,768	17,603	18,584	22,157	23,500	23,500
European Union	23,086	16,728	22,677	31,925	30,000	31,000
India	73	1,723	8,651	5,354	2,200	2,200
Kazakhstan	5,519	11,069	6,801	8,000	6,000	6,000
Russia	3,983	21,627	11,289	18,534	20,000	20,000
Turkey	2,944	3,678	3,583	4,294	3,800	3,800
Ukraine	4,302	5,436	7,190	9,755	11,000	11,000
Others	12,633	10,968	10,112	10,598	12,520	12,620
Subtotal	98,044	125,674	119,359	130,638	134,020	135,120
United States	36,098	28,144	27,734	31,497	25,500	25,000
World Total	134,142	153,818	147,093	162,135	159,520	160,120
TY Imports						
Afghanistan	2,000	2,200	1,600	2,050	2,000	2,000
Algeria	6,516	6,500	6,484	7,484	7,400	7,400
Bangladesh	3,951	2,039	2,725	3,354	3,600	3,300
Brazil	6,742	7,053	7,547	7,061	7,000	6,700
Egypt	10,600	11,650	8,300	10,170	10,000	10,500
European Union	4,621	7,362	5,277	3,982	5,500	5,500
Indonesia	6,606	6,457	7,146	7,392	7,700	7,700
Iran	200	2,400	5,600	6,600	6,500	6,500
Iraq	3,631	3,784	3,948	3,246	3,000	3,000
Israel	1,393	2,029	1,446	1,667	1,800	1,800
Japan	5,869	6,354	6,598	6,123	6,000	6,000
Korea, South	4,761	5,188	5,439	4,288	3,800	3,800
Libya	1,474	1,561	1,946	2,049	1,850	1,850
Mexico	3,404	5,020	3,826	4,636	4,600	4,600
Morocco	4,019	3,671	3,825	3,892	3,000	3,100
Nigeria	4,052	3,931	4,140	4,550	4,750	4,750
Philippines	3,224	4,075	3,645	3,482	3,600	3,800
Saudi Arabia	1,739	2,904	1,921	3,429	3,250	3,450
Sudan	1,595	2,360	1,793	2,664	2,600	2,600
Syria	428	680	963	1,579	2,000	2,000
Thailand	1,943	2,646	1,845	1,693	2,000	2,000
Turkey	3,545	4,413	3,312	4,154	5,500	5,300
Uzbekistan	1,618	2,698	1,863	2,224	2,100	2,100
Vietnam	2,459	2,711	1,671	2,158	2,100	2,100
Yemen	2,816	2,685	3,149	3,425	3,600	3,600
Others	38,693	45,793	44,142	50,479	46,055	46,950
Subtotal	127,899	148,164	140,151	153,831	151,305	152,400
Unaccounted	3,645	2,630	3,500	3,537	3,515	3,520
United States	2,598	3,024	3,442	4,767	4,700	4,200
World Total	134,142	153,818	147,093	162,135	159,520	160,120

TY=Trade Year, see Endnotes.

World Wheat Production, Consumption, and Stocks
Local Marketing Years, Thousand Metric Tons

	2010/11	2011/12	2012/13	2013/14	2014/15 Jan	2014/15 Feb
Production						
Argentina	17,200	15,500	9,300	10,500	12,000	12,500
Australia	27,410	29,905	22,856	27,009	24,000	24,000
Brazil	5,900	5,800	4,380	5,300	6,300	6,300
Canada	23,300	25,288	27,205	37,530	29,300	29,300
China	115,180	117,400	121,023	121,930	126,000	126,000
Egypt	7,200	8,400	8,500	8,250	8,200	8,200
European Union	136,667	138,182	133,949	143,513	155,505	155,685
India	80,800	86,870	94,880	93,510	95,910	95,910
Iran	13,500	12,400	13,800	14,500	13,000	13,000
Kazakhstan	9,638	22,732	9,841	13,941	12,500	12,996
Pakistan	23,900	25,000	23,300	24,000	25,000	25,000
Russia	41,508	56,240	37,720	52,091	59,000	59,000
Turkey	17,000	18,800	16,000	18,750	15,000	15,250
Ukraine	16,844	22,324	15,761	22,278	24,500	24,750
Uzbekistan	6,500	6,300	6,700	6,800	7,150	7,150
Others	48,144	50,388	52,028	58,130	54,890	54,864
Subtotal	590,691	641,529	597,243	658,032	668,255	669,905
United States	58,868	54,244	61,298	58,105	55,129	55,129
World Total	649,559	695,773	658,541	716,137	723,384	725,034
Total Consumption						
Algeria	8,750	8,950	9,450	9,850	10,050	10,050
Brazil	10,800	11,200	10,900	11,400	12,300	12,000
Canada	7,551	9,852	9,598	10,138	10,330	9,830
China	110,500	122,500	125,000	121,500	124,000	124,000
Egypt	17,700	18,600	18,700	18,500	17,900	18,400
European Union	122,844	127,234	119,250	115,750	124,500	124,500
India	81,760	81,404	83,822	94,006	93,985	93,985
Indonesia	6,035	6,250	6,950	7,265	7,465	7,465
Iran	15,700	14,900	16,400	18,000	18,900	18,900
Morocco	7,850	8,800	8,300	9,000	8,900	8,900
Pakistan	23,000	23,100	23,900	24,100	25,100	25,100
Russia	38,600	38,000	33,550	34,100	35,000	35,500
Turkey	17,300	18,100	17,650	17,750	17,100	17,500
Ukraine	11,600	14,950	11,400	11,500	12,000	12,000
Uzbekistan	7,700	7,800	8,000	8,400	8,900	8,900
Others	135,175	144,435	146,111	149,600	152,228	152,638
Subtotal	623,988	665,016	642,121	670,016	680,963	682,428
United States	29,424	31,962	37,768	34,154	32,222	32,221
World Total	653,412	696,978	679,889	704,170	713,185	714,649
Ending Stocks						
Australia	8,184	7,051	4,654	6,242	6,092	6,392
Canada	7,360	5,932	5,052	9,652	6,245	6,602
China	59,091	55,946	53,960	60,274	62,774	62,774
European Union	11,934	13,516	10,815	10,635	17,140	16,320
India	15,360	19,950	24,200	17,830	16,300	16,300
Russia	13,736	10,899	4,952	5,209	9,409	9,059
Ukraine	3,341	5,363	2,579	3,670	5,220	5,470
Others	55,553	57,973	49,743	57,883	54,118	56,095
Subtotal	174,559	176,630	155,955	171,395	177,298	179,012
United States	23,487	20,211	19,538	16,065	18,697	18,833
World Total	198,046	196,841	175,493	187,460	195,995	197,845

Regional Wheat Imports, Production, Consumption, and Stocks

Thousand Metric Tons

	2010/11	2011/12	2012/13	2013/14	Jan 2014/15	Feb 2014/15
TY Imports						
North America	6,431	8,541	7,753	9,844	9,780	9,280
Central America	1,684	1,666	1,662	1,845	1,820	1,820
South America	13,158	13,779	14,392	14,806	13,940	13,835
European Union - 28	4,621	7,362	5,277	3,982	5,500	5,500
Other Europe	1,614	1,913	1,633	1,840	1,890	1,940
Former Soviet Union - 12	5,498	8,022	7,228	7,389	7,285	7,635
Middle East	17,324	23,065	24,175	28,304	30,155	30,155
North Africa	24,427	24,855	22,052	25,240	23,750	24,350
Sub-Saharan Africa	15,093	18,484	17,437	19,065	20,000	20,050
East Asia	13,889	16,865	17,352	19,463	13,635	13,635
South Asia	7,593	5,489	5,312	6,716	7,465	7,415
Southeast Asia	16,341	18,016	16,356	17,109	17,750	17,950
Others	2,824	3,131	2,964	2,995	3,035	3,035
Total	130,497	151,188	143,593	158,598	156,005	156,600
Production						
North America	85,844	83,160	91,734	99,012	88,089	88,089
South America	27,560	25,766	18,404	19,985	23,650	24,150
European Union - 28	136,667	138,182	133,949	143,513	155,505	155,685
Other Europe	3,188	3,597	3,504	4,409	3,854	3,854
Former Soviet Union - 12	81,027	114,985	77,802	103,873	111,600	112,346
Middle East	38,638	39,282	36,880	41,668	35,030	35,280
North Africa	15,914	18,366	17,320	19,722	16,800	16,800
Sub-Saharan Africa	5,379	6,054	6,544	7,363	7,498	7,473
East Asia	116,355	118,775	122,483	123,244	127,462	127,461
South Asia	110,949	117,132	126,390	125,710	129,205	129,205
Oceania	27,855	30,288	23,345	27,457	24,510	24,510
Others	183	186	186	181	181	181
Total	649,559	695,773	658,541	716,137	723,384	725,034
Domestic Consumption						
North America	43,425	49,414	53,991	50,942	49,302	48,801
South America	25,598	26,121	26,433	27,112	28,275	27,985
European Union - 28	122,844	127,234	119,250	115,750	124,500	124,500
Other Europe	4,723	4,871	4,696	4,937	4,905	4,955
Former Soviet Union - 12	75,710	79,980	71,725	73,075	75,285	75,885
Middle East	54,406	56,273	56,913	59,667	60,440	60,890
North Africa	38,805	40,927	41,421	42,424	41,850	42,350
Sub-Saharan Africa	20,647	22,473	23,071	25,289	26,348	26,348
East Asia	123,952	137,057	140,083	135,338	137,075	137,075
South Asia	117,003	115,834	121,167	132,100	133,885	133,685
Southeast Asia	14,977	16,665	16,535	16,619	17,205	17,405
Oceania	6,845	7,819	8,106	8,275	8,160	8,360
Others	3,354	3,369	3,358	3,485	3,650	3,650
Total	652,289	688,037	686,749	695,013	710,880	711,889
Ending Stocks						
North America	31,164	26,718	24,868	26,036	25,271	25,764
South America	8,574	3,991	3,464	6,809	6,888	6,509
European Union - 28	11,934	13,516	10,815	10,635	17,140	16,320
Other Europe	1,182	1,327	1,046	1,086	1,055	1,055
Former Soviet Union - 12	22,719	26,006	13,936	15,019	20,879	21,375
Middle East	12,774	11,686	13,014	16,379	14,894	16,294
North Africa	12,194	14,094	11,441	13,480	11,630	11,730
Sub-Saharan Africa	1,330	2,312	2,056	2,315	2,210	2,235
East Asia	62,143	59,235	57,502	63,463	65,947	65,939
South Asia	21,079	25,448	28,173	21,730	20,005	20,240
Southeast Asia	3,991	4,703	3,854	3,558	3,358	3,358
Oceania	8,580	7,415	4,957	6,535	6,347	6,655
Others	382	390	367	415	371	371
Total	198,046	196,841	175,493	187,460	195,995	197,845

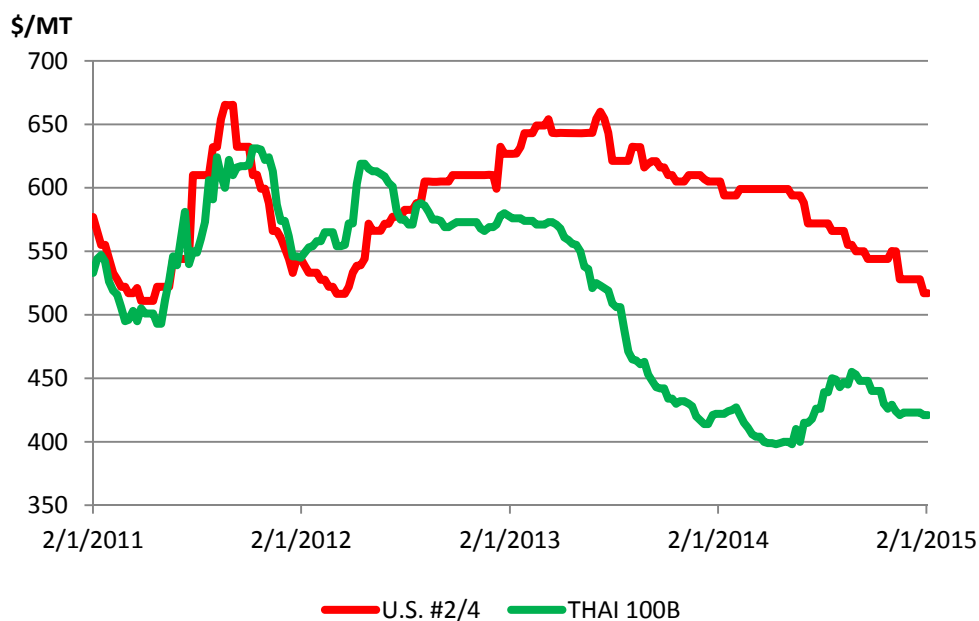
NOTES: Regional definitions appear on last page of this circular. Imports are reported on a trade year basis. All other data are reported using local marketing years.

RICE: WORLD MARKETS AND TRADE

OVERVIEW

Global production for 2014/15 is revised lower on a reduced crop in Thailand, where ongoing drought has cut area for the off-season crop. Global trade is also down marginally. Global consumption, although lower than last month, still outpaces production, tightening stocks. U.S. exports are unchanged.

U.S. and Thai Quotes Move Closer



U.S. quotes for long-grain milled rice (#2/4) continue to drop, and are the lowest since April 2012. Exportable supplies remain ample, but sales and shipments outside traditional markets have been slow, weighing on prices. In comparison, prices for Thai 100B have weakened only marginally in the last month, despite the one million ton tender from government stocks. The price gap between these two has narrowed slightly in the past few weeks to below \$100 per ton, FOB, improving the competitiveness of U.S. rice.

SELECTED TRADE CHANGES For 2014

Selected Exporters

- **Argentina** is down 106,000 tons to 494,000 on final trade data.
- **India** is up 300,000 tons to a record 10.8 million on preliminary December data.

Grain: World Markets and Trade, February 2015

-
- **Pakistan** is down 500,000 tons to 3.4 million on a slower pace.
 - **Thailand** is up 669,000 to a record 11.0 million on final data.
 - **Vietnam** is down 175,000 tons to 6.3 million on final data.

Selected Importers

- **China** is up 200,000 tons to 4.1 million on larger shipments from Thailand and Burma.
- **Iraq** is down 350,000 tons to 1.1 million reflecting a larger crop and slower purchases.
- **Nepal** is up 100,000 tons to 450,000 on stronger shipments from India.
- **Sri Lanka** is up 200,000 tons to 500,000 on larger shipments from India.

SELECTED TRADE CHANGES for 2015

- **Thailand's** exports are cut 300,000 tons to 11.0 million on a reduced crop.
- **Bangladesh's** imports are up 100,000 tons to 600,000 on expectations of continued strong demand.
- **Iraq's** imports are down 200,000 tons to 1.3 million on a larger crop.

World Rice Trade
January/December Year, Thousand Metric Tons

	2010/11	2011/12	2012/13	2013/14	2014/15 Jan	2014/15 Feb
TY Exports						
Argentina	732	608	526	494	600	580
Australia	311	449	460	430	400	400
Brazil	1,296	1,105	830	850	800	800
Burma	1,075	1,357	1,163	1,550	1,550	1,550
Cambodia	860	900	1,075	1,000	1,200	1,200
China	487	267	447	393	400	400
Egypt	320	600	700	600	500	500
European Union	237	194	203	230	220	220
Guyana	260	265	346	500	500	500
India	4,637	10,250	10,480	10,800	8,700	8,700
Pakistan	3,414	3,399	4,126	3,400	3,900	3,900
Paraguay	208	262	365	350	400	400
Thailand	10,647	6,945	6,722	10,969	11,300	11,000
Uruguay	841	1,056	939	957	950	950
Vietnam	7,000	7,717	6,700	6,325	6,700	6,700
Others	1,002	1,259	1,057	1,030	1,037	1,037
Subtotal	33,327	36,633	36,139	39,878	39,157	38,837
United States	3,246	3,298	3,293	3,042	3,400	3,400
World Total	36,573	39,931	39,432	42,920	42,557	42,237
TY Imports						
Angola	275	360	430	450	450	450
Bangladesh	1,486	53	114	850	500	600
Brazil	591	732	712	700	700	700
Cameroon	310	450	550	550	525	525
China	575	2,900	3,483	4,100	4,300	4,300
Cote d'Ivoire	935	1,375	940	1,150	1,200	1,200
Cuba	558	330	413	400	450	450
European Union	1,496	1,313	1,375	1,500	1,400	1,400
Ghana	620	595	725	560	620	620
Indonesia	3,098	1,960	650	1,225	1,300	1,300
Iran	1,870	1,500	2,220	1,650	1,700	1,700
Iraq	1,036	1,478	1,294	1,050	1,450	1,250
Japan	742	650	690	650	700	700
Kenya	335	400	410	440	480	480
Korea, South	532	238	580	372	450	450
Malaysia	1,076	1,006	890	1,100	1,100	1,100
Mexico	705	680	746	700	775	775
Mozambique	360	445	500	500	520	520
Nigeria	2,550	3,400	2,400	3,000	3,500	3,500
Philippines	1,200	1,500	1,000	1,700	1,700	1,700
Saudi Arabia	1,059	1,193	1,326	1,450	1,325	1,325
Senegal	805	1,200	1,075	1,200	1,200	1,200
South Africa	885	870	990	1,000	1,100	1,100
United Arab Emirates	420	430	440	450	460	460
Yemen	337	420	432	450	450	450
Others	9,551	11,106	11,418	12,589	11,043	11,043
Subtotal	33,407	36,584	35,803	39,786	39,398	39,298
Unaccounted	2,545	2,707	2,954	2,380	2,489	2,269
United States	621	640	675	754	670	670
World Total	36,573	39,931	39,432	42,920	42,557	42,237

TY=Trade Year, see Endnotes.

Note about dates: 2014/15 is calendar year 2015, 2013/14 is calendar year 2014, and so on.

World Rice Production, Consumption, and Stocks
Local Marketing Years, Thousand Metric Tons

	2010/11	2011/12	2012/13	2013/14	2014/15 Jan	2014/15 Feb
Milled Production						
Bangladesh	31,700	33,700	33,820	34,390	34,600	34,600
Brazil	9,300	7,888	8,037	8,300	8,300	8,300
Burma	11,060	11,473	11,715	11,957	12,150	12,150
Cambodia	4,233	4,268	4,670	4,725	4,900	4,700
China	137,000	140,700	143,000	142,530	144,500	144,500
Egypt	3,100	4,250	4,675	4,750	4,500	4,500
India	95,980	105,310	105,240	106,540	102,000	102,000
Indonesia	35,500	36,500	36,550	36,300	36,500	36,500
Japan	7,720	7,646	7,756	7,832	7,700	7,679
Korea, South	4,295	4,224	4,006	4,230	4,240	4,241
Nepal	2,680	2,970	3,000	3,361	3,100	3,100
Pakistan	5,000	6,200	5,800	6,700	6,500	6,500
Philippines	10,539	10,710	11,428	11,858	12,200	12,200
Thailand	20,262	20,460	20,200	20,460	20,500	19,500
Vietnam	26,371	27,152	27,537	28,161	28,250	28,250
Others	37,627	37,686	38,216	38,869	38,459	38,768
Subtotal	442,367	461,137	465,650	470,963	468,399	467,488
United States	7,593	5,866	6,348	6,117	7,068	7,068
World Total	449,960	467,003	471,998	477,080	475,467	474,556
Consumption and Residual						
Bangladesh	32,400	34,300	34,500	34,900	35,200	35,300
Brazil	8,200	7,928	7,850	7,900	7,900	7,900
Burma	10,100	10,200	10,400	10,450	10,700	10,700
Cambodia	3,370	3,400	3,550	3,650	3,700	3,700
China	135,000	139,600	144,000	146,300	148,000	148,000
Egypt	3,300	3,620	4,050	4,000	4,000	4,000
India	90,206	93,334	94,031	99,180	99,000	99,151
Indonesia	38,044	38,188	38,127	38,500	39,200	39,200
Iran	3,250	3,300	3,350	3,400	3,450	3,450
Japan	8,200	8,050	8,250	8,250	8,200	8,200
Korea, South	5,175	4,880	4,489	4,460	4,450	4,450
Nigeria	4,800	5,600	5,300	5,800	6,100	6,100
Philippines	12,900	12,860	12,850	12,850	13,200	13,200
Thailand	10,300	10,400	10,600	10,875	10,900	10,900
Vietnam	19,400	19,650	21,900	22,000	21,900	21,900
Others	53,813	56,828	58,761	60,968	60,237	60,120
Subtotal	440,638	456,292	464,854	476,487	479,139	478,942
United States	4,329	3,492	3,779	3,996	4,191	4,190
World Total	444,967	459,784	468,633	480,483	483,330	483,132
Ending Stocks						
China	42,574	45,023	46,826	46,814	46,914	46,914
European Union	1,215	1,146	1,188	1,188	1,182	1,182
India	23,500	25,100	25,440	22,651	16,800	16,800
Indonesia	7,131	7,403	6,476	5,501	4,101	4,101
Japan	2,712	2,747	2,742	2,778	2,778	2,757
Philippines	2,459	1,509	1,487	1,695	2,545	2,295
Thailand	5,615	9,330	12,808	11,724	10,993	9,624
Others	12,891	13,269	12,072	13,416	12,380	13,204
Subtotal	98,097	105,527	109,039	105,767	97,693	96,877
United States	1,514	1,303	1,156	1,025	1,307	1,339
World Total	99,611	106,830	110,195	106,792	99,000	98,216

Note: All data are reported on a milled basis.

Regional Rice Imports, Production, Consumption, and Stocks

Thousand Metric Tons

	2010/11	2011/12	2012/13	2013/14	Jan 2014/15	Feb 2014/15
TY Imports						
North America	1,654	1,664	1,776	1,819	1,795	1,795
Caribbean	1,099	845	980	960	1,025	1,025
South America	1,396	1,896	1,702	1,893	1,937	1,937
Other Europe	128	114	125	130	130	130
Former Soviet Union - 12	366	456	544	571	441	441
Middle East	6,099	6,455	7,152	6,690	6,740	6,540
North Africa	381	777	487	505	485	485
Sub-Saharan Africa	9,865	12,245	11,850	12,845	12,930	12,930
East Asia	2,444	4,389	5,332	5,727	6,060	6,060
South Asia	1,864	737	722	1,990	1,250	1,350
Southeast Asia	6,418	5,488	3,611	5,000	5,150	5,150
Others	2,314	2,158	2,197	2,410	2,125	2,125
Total	34,028	37,224	36,478	40,540	40,068	39,968
Production						
North America	7,739	5,979	6,479	6,248	7,215	7,223
Caribbean	943	1,002	974	1,040	1,079	1,079
South America	17,197	15,215	15,852	16,384	16,643	16,604
European Union - 28	2,172	2,139	2,100	1,965	1,974	1,974
Former Soviet Union - 12	1,321	1,294	1,294	1,205	1,237	1,250
Middle East	2,131	2,170	2,251	2,450	2,333	2,410
North Africa	3,139	4,289	4,704	4,789	4,500	4,500
Sub-Saharan Africa	13,313	12,904	12,792	13,158	13,023	13,023
East Asia	151,636	155,342	157,692	157,585	159,271	159,251
South Asia	138,116	151,656	150,892	154,286	149,150	149,400
Southeast Asia	111,008	113,649	115,450	116,682	117,851	116,651
Others	1,245	1,364	1,518	1,288	1,191	1,191
Total	449,960	467,003	471,998	477,080	475,467	474,556
Domestic Consumption						
North America	5,429	4,668	4,977	5,233	5,431	5,430
Central America	1,109	1,156	1,181	1,213	1,208	1,213
Caribbean	2,055	1,997	1,959	1,996	2,108	2,098
South America	14,427	14,180	14,394	14,531	14,618	14,618
European Union - 28	3,250	3,300	3,250	3,250	3,260	3,260
Former Soviet Union - 12	1,425	1,422	1,568	1,538	1,453	1,461
Middle East	8,293	8,603	8,834	9,195	9,180	9,085
North Africa	3,677	4,045	4,572	4,480	4,460	4,460
Sub-Saharan Africa	21,598	23,741	24,559	25,669	25,694	25,669
East Asia	151,568	155,886	160,248	162,660	164,135	164,135
South Asia	130,792	136,823	137,570	143,986	143,920	144,171
Southeast Asia	98,530	99,148	101,968	103,011	104,321	104,321
Others	634	661	707	717	540	540
Total	442,787	455,630	465,787	477,479	480,328	480,461
Ending Stocks						
North America	1,734	1,455	1,345	1,176	1,487	1,527
Central America	249	273	241	242	245	236
Caribbean	122	157	104	85	99	91
South America	2,220	1,606	1,512	1,728	2,015	1,996
European Union - 28	1,215	1,146	1,188	1,188	1,182	1,182
Middle East	1,731	1,526	2,059	1,890	1,782	1,725
North Africa	122	487	427	612	627	637
Sub-Saharan Africa	1,360	2,227	1,963	1,762	1,736	1,671
East Asia	46,690	48,899	50,711	50,754	50,995	50,978
South Asia	25,342	27,511	27,019	25,461	18,450	19,340
Southeast Asia	18,599	21,369	23,202	21,534	20,108	18,564
Oceania	27	40	238	191	65	85
Others	200	134	186	169	209	184
Total	99,611	106,830	110,195	106,792	99,000	98,216

NOTES: Regional definitions appear on last page of this circular. Imports are reported on a trade year basis. All other data are reported using local marketing years.

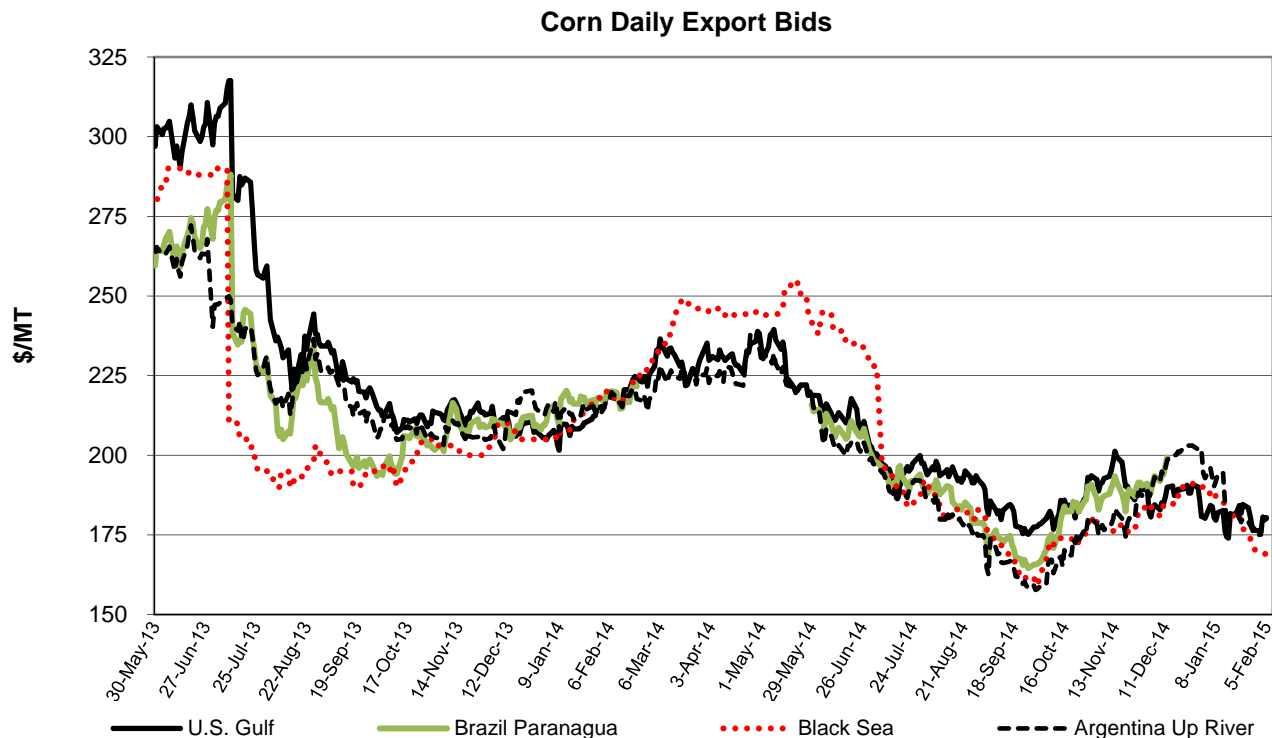
COARSE GRAINS: WORLD MARKETS AND TRADE

OVERVIEW

World corn production is raised as larger crops in Ukraine, Argentina, and India more than offset lower production in Russia. Trade is boosted on stronger demand from EU, Canada, and China. The U.S. season-average farm price for corn is unchanged.

PRICES

Since the release of the January WASDE report, U.S. corn quotes declined only slightly to about \$180/ton by early February. As new-crop prospects improve, Argentine quotes have slid and are at or below U.S. Similarly, Black Sea fell to about \$10 below U.S. prices as burdensome supplies, intense competition, and a weak currency all act to pressure prices. Brazilian quotes were not available.



TRADE CHANGES IN 2014/15

Selected Exporters

- **Argentine corn** is up sharply by 1.5 million tons to 13.5 million on greater exportable supplies and competitive prices. (**Sorghum** is raised 200,000 tons to 1.5 million.)

-
- **Russian corn** is lowered 500,000 tons to 2.5 million on a smaller crop and intense competition from neighboring Ukraine.
 - **South African corn** is down 500,000 tons to 2.0 million despite prospects for burdensome supplies, because of slow trade arising from strong competition.
 - **Ukrainian corn** is up sharply by 1.5 million tons to 18.0 million because of greater exportable supplies and competitive prices with a weak domestic currency.
 - **U.S. sorghum** is raised 700,000 tons to 7.5 million, the highest level in nearly 25 years, on continued purchases by China.

Selected Importers

- **Canadian corn** is boosted 500,000 tons to 1.5 million on continued strong shipments from the United States.
- **Chinese corn** is up 500,000 tons to 2.5 million on improved prospects for trade, especially from non-U.S. origins.
- **EU corn** is boosted 1.0 million tons again this month to 8.0 million on a surge of import licenses in January and on higher wheat exports.
- **Chinese sorghum** is raised 800,000 tons to 7.0 million on continued purchases and shipments, primarily from the United States.

World Coarse Grain Trade
October/September Year, Thousand Metric Tons

	2010/11	2011/12	2012/13	2013/14	2014/15 Jan	2014/15 Feb
TY Exports						
Argentina	18,628	22,307	29,496	16,633	14,905	16,605
Australia	4,897	7,279	6,410	6,968	5,600	5,600
Brazil	11,591	12,677	26,078	22,057	22,015	22,015
Canada	4,427	3,853	4,669	5,455	3,500	3,600
European Union	5,865	7,177	8,914	7,839	9,605	9,605
India	3,437	4,858	5,541	4,524	2,850	2,850
Russia	1,029	5,997	4,365	7,044	7,410	7,010
Serbia	2,013	2,345	628	1,761	2,525	2,525
South Africa	2,857	1,851	2,411	2,127	2,525	2,025
Ukraine	7,490	17,447	15,527	24,124	19,360	20,880
Others	4,539	7,464	7,528	8,771	7,125	7,225
Subtotal	66,773	93,255	111,567	107,303	97,420	99,940
United States	49,247	40,153	20,586	56,920	51,585	52,285
World Total	116,020	133,408	132,153	164,223	149,005	152,225
TY Imports						
Algeria	2,949	3,691	3,280	4,910	4,010	4,010
Brazil	650	1,211	1,240	1,246	1,205	1,205
Canada	1,056	764	523	714	1,035	1,535
Chile	1,271	1,523	1,327	1,656	1,625	1,625
China	2,697	7,924	5,604	12,445	12,825	14,125
Colombia	4,155	4,103	4,088	4,717	4,730	4,730
Dominican Republic	999	1,054	1,046	1,100	1,200	1,200
Egypt	5,840	7,250	5,096	8,553	7,530	7,530
European Union	8,635	6,908	11,777	16,262	7,155	8,205
Indonesia	3,041	1,724	2,719	3,500	2,600	2,600
Iran	4,000	5,700	4,800	6,400	6,700	6,700
Israel	1,446	1,530	1,564	2,092	1,875	1,875
Japan	18,590	17,730	17,743	17,501	17,790	17,790
Jordan	917	1,144	1,202	1,400	1,200	1,200
Korea, South	8,168	7,726	8,265	10,499	9,690	9,690
Libya	543	829	1,220	1,150	1,250	1,250
Malaysia	2,809	3,309	3,048	3,400	3,400	3,400
Mexico	10,760	12,819	7,623	11,334	11,200	11,200
Morocco	2,059	2,479	1,831	2,640	2,700	2,700
Peru	2,079	1,928	2,404	2,349	2,425	2,425
Saudi Arabia	8,138	10,485	12,390	11,247	10,050	10,050
Taiwan	4,277	4,478	4,398	4,561	4,350	4,350
Turkey	496	782	1,922	1,977	2,250	2,250
Venezuela	1,251	2,596	2,146	2,626	2,600	2,600
Vietnam	1,000	1,600	1,700	2,300	2,000	2,000
Others	14,786	15,427	14,095	15,772	16,235	16,235
Subtotal	112,612	126,714	123,051	152,351	139,630	142,480
Unaccounted	959	3,552	2,601	8,555	6,220	6,688
United States	2,449	3,142	6,501	3,317	3,155	3,057
World Total	116,020	133,408	132,153	164,223	149,005	152,225

TY=Trade Year, see Endnotes.

World Coarse Grains Production, Consumption, and Stocks
Local Marketing Years, Thousand Metric Tons

	2010/11	2011/12	2012/13	2013/14	2014/15 Jan	2014/15 Feb
Production						
Argentina	33,258	30,105	37,246	35,665	29,216	30,516
Australia	11,485	12,257	11,414	12,369	11,207	11,207
Brazil	60,380	75,884	84,253	82,103	77,713	77,713
Canada	22,668	22,921	24,427	28,745	21,915	21,915
China	183,771	198,635	212,192	225,070	222,150	222,150
Ethiopia	11,193	12,264	12,286	14,468	13,350	13,350
European Union	142,836	149,886	145,887	158,506	168,048	168,248
India	43,370	42,250	39,940	42,710	38,310	38,810
Indonesia	6,800	8,850	8,500	9,100	9,200	9,200
Mexico	29,226	25,689	28,881	32,020	31,340	31,140
Nigeria	20,720	17,421	18,573	19,200	18,600	18,600
Russia	16,416	33,077	28,658	35,735	41,000	40,550
South Africa	11,310	13,268	12,873	15,574	14,096	14,096
Turkey	10,184	11,299	10,595	13,075	9,275	9,475
Ukraine	21,503	33,476	29,527	39,918	37,790	39,345
Others	144,098	145,978	145,703	148,520	152,005	152,053
Subtotal	769,218	833,260	850,955	912,778	895,215	898,368
United States	329,695	322,451	285,311	367,089	377,122	377,122
World Total	1,098,913	1,155,711	1,136,266	1,279,867	1,272,337	1,275,490
Domestic Consumption						
Argentina	11,033	10,510	12,050	13,595	14,131	14,431
Brazil	52,548	53,653	55,803	58,078	59,603	59,603
Canada	21,201	20,285	20,257	22,485	20,860	21,490
China	188,448	196,192	209,671	227,600	233,425	234,225
Egypt	13,332	12,736	12,905	14,080	14,678	14,678
Ethiopia	10,700	11,850	12,150	14,300	14,100	14,100
European Union	154,642	151,460	153,095	164,295	163,870	164,920
India	38,850	37,750	35,275	37,400	35,900	35,900
Japan	18,875	17,990	18,030	17,690	17,990	17,990
Mexico	39,785	37,985	36,195	40,885	41,940	41,940
Nigeria	20,670	17,321	18,700	19,250	18,650	18,650
Russia	18,131	27,728	25,134	28,519	32,600	32,400
South Africa	11,206	11,250	11,635	12,150	12,448	12,448
Turkey	11,075	11,755	13,005	13,430	13,130	13,330
Ukraine	13,772	15,559	14,661	16,227	16,560	16,585
Others	206,943	213,660	217,524	224,385	231,949	231,851
Subtotal	832,017	866,185	860,198	933,244	944,753	949,012
United States	297,492	288,810	275,537	305,112	312,487	313,013
World Total	1,129,509	1,154,995	1,135,735	1,238,356	1,257,240	1,262,025
Ending Stocks						
Brazil	10,836	9,821	14,559	18,268	17,868	18,068
China	50,126	60,362	68,378	78,260	79,685	80,185
European Union	16,744	15,595	12,878	14,697	16,460	16,660
Iran	4,138	4,734	4,234	4,334	4,334	4,334
Saudi Arabia	1,720	3,211	3,391	4,504	3,989	3,989
South Africa	3,576	3,890	3,244	4,573	3,069	3,801
Ukraine	2,149	2,421	2,330	3,330	3,955	3,760
Others	46,261	40,701	36,540	48,317	43,803	44,028
Subtotal	135,550	140,735	145,554	176,283	173,163	174,825
United States	32,288	27,819	23,531	34,313	50,739	49,236
World Total	167,838	168,554	169,085	210,596	223,902	224,061

Regional Coarse Grains Imports, Production, Consumption, and Stocks

Thousand Metric Tons

	2010/11	2011/12	2012/13	2013/14	Jan 2014/15	Feb 2014/15
TY Imports						
North America	14,265	16,725	14,647	15,365	15,390	15,792
Central America	2,900	2,769	2,470	2,972	3,200	3,200
Caribbean	2,193	2,159	2,327	2,386	2,510	2,510
South America	10,536	11,968	11,804	13,293	13,300	13,300
European Union - 28	8,635	6,908	11,777	16,262	7,155	8,205
Former Soviet Union - 12	1,133	1,038	725	720	780	780
Middle East	18,690	23,348	24,922	26,232	25,590	25,590
North Africa	12,349	15,320	13,037	18,709	16,690	16,690
Sub-Saharan Africa	2,038	3,245	2,675	2,891	3,025	3,025
East Asia	33,888	38,040	36,163	45,111	44,785	46,085
Southeast Asia	7,558	7,317	8,058	10,650	9,280	9,280
Others	876	1,019	947	1,077	1,080	1,080
Total	115,061	129,856	129,552	155,668	142,785	145,537
Production						
North America	381,589	371,061	338,619	427,854	430,377	430,177
South America	106,037	117,970	135,056	130,835	120,901	122,201
European Union - 28	142,836	149,886	145,887	158,506	168,048	168,248
Other Europe	9,996	9,497	6,584	9,478	9,816	9,816
Former Soviet Union - 12	47,474	78,648	68,221	87,627	90,271	91,426
Middle East	19,574	20,398	18,232	20,767	16,536	16,736
North Africa	12,159	11,142	10,129	11,659	10,989	10,989
Sub-Saharan Africa	99,903	100,066	104,204	105,092	104,797	104,797
East Asia	185,731	200,748	214,647	227,520	224,608	224,606
South Asia	50,624	50,314	48,598	51,738	47,358	47,858
Southeast Asia	26,374	28,379	29,138	30,908	31,901	31,901
Oceania	12,030	12,813	12,082	13,015	11,867	11,867
Others	4,586	4,789	4,869	4,868	4,868	4,868
Total	1,098,913	1,155,711	1,136,266	1,279,867	1,272,337	1,275,490
Domestic Consumption						
North America	358,478	347,080	331,989	368,482	375,287	376,443
South America	84,079	85,233	89,388	94,056	97,161	97,386
European Union - 28	154,642	151,460	153,095	164,295	163,870	164,920
Other Europe	8,714	8,374	7,104	7,908	8,196	8,196
Former Soviet Union - 12	41,792	54,403	50,205	55,981	60,316	60,118
Middle East	38,540	40,949	42,798	44,888	45,491	45,691
North Africa	25,390	25,266	24,936	27,450	29,310	29,310
Sub-Saharan Africa	98,891	98,557	103,970	104,278	105,230	105,230
East Asia	221,781	228,692	243,025	261,946	268,376	269,176
South Asia	46,064	45,658	43,484	46,177	44,879	44,879
Southeast Asia	33,139	34,612	35,867	37,811	39,240	39,240
Oceania	7,495	6,518	6,132	6,090	6,567	6,567
Others	9,698	9,692	9,634	10,119	10,398	10,398
Total	1,128,703	1,136,494	1,141,627	1,229,481	1,254,321	1,257,554
Ending Stocks						
North America	37,878	33,066	28,239	42,491	57,686	55,674
South America	20,529	14,143	19,473	24,705	24,058	24,220
European Union - 28	16,744	15,595	12,878	14,697	16,460	16,660
Other Europe	1,455	1,023	611	1,256	1,226	1,226
Former Soviet Union - 12	5,480	6,160	5,037	6,699	8,484	8,512
Middle East	8,157	10,578	9,628	11,720	10,005	10,005
North Africa	4,784	5,447	3,456	5,625	4,374	4,374
Sub-Saharan Africa	10,429	11,335	10,999	11,604	9,694	10,426
East Asia	53,412	63,402	71,053	81,705	82,586	83,095
South Asia	3,086	2,974	2,819	4,102	3,364	3,896
Southeast Asia	3,508	3,061	3,225	4,178	4,299	4,299
Oceania	1,583	978	915	989	691	699
Others	793	792	752	825	975	975
Total	167,838	168,554	169,085	210,596	223,902	224,061

NOTES: Regional definitions appear on last page of this circular. Imports are reported on a trade year basis. All other data are reported using local marketing years.

World Corn Trade
October/September Year, Thousand Metric Tons

	2010/11	2011/12	2012/13	2013/14	2014/15 Jan	2014/15 Feb
TY Exports						
Argentina	15,198	16,501	22,789	12,846	12,000	13,500
Brazil	11,582	12,674	26,044	22,041	22,000	22,000
Burma	175	200	550	600	600	600
European Union	1,096	3,287	2,193	2,401	2,500	2,500
India	3,376	4,674	4,768	3,889	2,500	2,500
Paraguay	1,201	2,188	2,858	2,714	1,900	2,000
Russia	37	2,027	1,917	4,192	3,000	2,500
Serbia	2,004	2,331	601	1,736	2,500	2,500
South Africa	2,839	1,831	2,398	2,104	2,500	2,000
Ukraine	5,008	15,157	12,726	20,004	16,500	18,000
Others	4,031	4,465	5,406	6,461	4,290	4,290
Subtotal	46,547	65,335	82,250	78,988	70,290	72,390
United States	45,162	38,389	18,262	50,707	44,500	44,500
World Total	91,709	103,724	100,512	129,695	114,790	116,890
TY Imports						
Algeria	2,683	3,203	2,909	4,200	3,400	3,400
Canada	984	747	493	679	1,000	1,500
Chile	526	906	844	1,456	1,300	1,300
China	979	5,231	2,702	3,277	2,000	2,500
Colombia	3,511	3,209	3,264	4,333	4,200	4,200
Cuba	838	746	911	900	900	900
Dominican Republic	999	1,054	1,046	1,100	1,200	1,200
Egypt	5,803	7,154	5,059	8,500	7,500	7,500
European Union	7,385	6,113	11,362	15,919	7,000	8,000
Guatemala	676	691	678	750	850	850
Indonesia	3,041	1,724	2,719	3,500	2,600	2,600
Iran	3,500	4,000	3,700	5,500	5,500	5,500
Israel	1,029	1,221	1,224	1,700	1,500	1,500
Japan	15,648	14,892	14,412	15,121	15,400	15,400
Korea, South	8,107	7,636	8,174	10,406	9,600	9,600
Malaysia	2,809	3,309	3,048	3,400	3,400	3,400
Mexico	8,252	11,172	5,676	10,954	10,900	10,900
Morocco	1,738	1,943	1,684	2,200	2,200	2,200
Peru	1,939	1,772	2,254	2,232	2,300	2,300
Saudi Arabia	1,933	1,816	2,063	2,600	2,900	2,900
Taiwan	4,134	4,341	4,232	4,400	4,200	4,200
Tunisia	677	853	846	1,000	900	900
Turkey	453	729	1,656	1,381	1,500	1,500
Venezuela	1,251	2,596	2,146	2,626	2,600	2,600
Vietnam	1,000	1,600	1,700	2,300	2,000	2,000
Others	10,402	11,753	9,765	11,795	12,260	12,260
Subtotal	90,297	100,411	94,567	122,229	109,110	111,110
Unaccounted	728	2,548	1,680	6,739	5,030	5,130
United States	684	765	4,265	727	650	650
World Total	91,709	103,724	100,512	129,695	114,790	116,890

TY=Trade Year, see Endnotes.

World Corn Production, Consumption, and Stocks
Local Marketing Years, Thousand Metric Tons

	2010/11	2011/12	2012/13	2013/14	2014/15 Jan	2014/15 Feb
Production						
Argentina	25,200	21,000	27,000	26,000	22,000	23,000
Brazil	57,400	73,000	81,500	79,500	75,000	75,000
Canada	12,043	11,359	13,060	14,194	11,500	11,500
China	177,245	192,780	205,614	218,490	215,500	215,500
Ethiopia	4,895	6,069	6,158	7,451	6,500	6,500
European Union	58,272	68,123	58,896	64,259	73,960	74,160
India	21,730	21,760	22,260	24,190	22,000	22,500
Indonesia	6,800	8,850	8,500	9,100	9,200	9,200
Mexico	21,058	18,726	21,591	22,880	23,000	23,200
Nigeria	8,800	9,250	7,630	7,700	7,500	7,500
Philippines	7,271	7,130	7,261	7,532	7,900	7,900
Russia	3,075	6,962	8,213	11,635	12,000	11,500
Serbia	6,800	6,400	3,750	6,400	6,850	6,850
South Africa	10,924	12,759	12,365	14,982	13,500	13,500
Ukraine	11,919	22,838	20,922	30,900	27,000	28,450
Others	86,329	88,368	90,084	92,553	93,576	93,940
Subtotal	519,761	575,374	594,804	637,766	626,986	630,200
United States	315,618	312,789	273,192	351,272	361,091	361,091
World Total	835,379	888,163	867,996	989,038	988,077	991,291
Total Consumption						
Argentina	7,300	7,000	7,900	8,800	9,200	9,400
Brazil	49,500	50,500	52,500	55,000	56,500	56,500
Canada	11,761	11,636	11,605	12,700	12,400	12,900
China	180,000	188,000	200,000	212,000	216,000	216,000
Egypt	12,500	11,700	12,000	13,200	13,800	13,800
European Union	64,900	69,500	69,600	76,500	77,500	78,500
India	18,100	17,200	17,500	19,500	20,000	20,000
Indonesia	9,800	10,500	10,900	11,900	12,000	12,000
Japan	15,700	14,900	14,500	15,100	15,400	15,400
Korea, South	8,214	7,815	8,481	9,891	10,100	10,100
Mexico	29,500	29,000	27,000	31,700	33,250	33,550
Philippines	7,200	7,400	7,400	8,000	8,400	8,400
Russia	3,200	4,700	6,400	7,500	9,000	9,000
South Africa	10,650	10,700	11,000	11,500	11,800	11,800
Ukraine	6,500	7,800	8,100	9,900	10,400	10,400
Others	133,602	140,337	140,871	148,643	152,282	152,507
Subtotal	567,401	605,729	601,490	660,255	670,279	673,304
United States	284,549	277,914	262,973	293,045	300,877	302,147
World Total	851,950	883,643	864,463	953,300	971,156	975,451
Ending Stocks						
Brazil	10,278	9,212	14,150	17,950	17,550	17,750
China	49,415	59,335	67,570	77,315	78,715	79,215
European Union	5,233	6,682	5,147	6,424	7,384	7,584
Iran	2,790	3,386	2,486	2,986	3,086	3,086
Mexico	1,112	1,316	1,061	2,694	2,924	2,744
South Africa	3,418	3,676	3,064	4,371	2,864	3,596
Ukraine	1,121	1,051	1,191	2,237	2,387	2,337
Others	27,998	24,749	22,534	28,531	26,548	26,909
Subtotal	101,365	109,407	117,203	142,508	141,458	143,221
United States	28,644	25,122	20,859	31,292	47,689	46,419
World Total	130,009	134,529	138,062	173,800	189,147	189,640

Regional Corn Imports, Production, Consumption, and Stocks

Thousand Metric Tons

	2010/11	2011/12	2012/13	2013/14	Jan 2014/15	Feb 2014/15
TY Imports						
North America	9,920	12,684	10,434	12,360	12,550	13,050
Central America	2,889	2,766	2,470	2,971	3,200	3,200
South America	8,372	9,886	9,643	12,000	11,720	11,720
European Union - 28	7,385	6,113	11,362	15,919	7,000	8,000
Former Soviet Union - 12	329	328	324	415	415	415
Middle East	9,942	10,686	10,738	13,506	13,950	13,950
North Africa	11,265	13,799	11,145	16,550	14,700	14,700
Sub-Saharan Africa	1,547	2,579	1,999	2,215	2,390	2,390
East Asia	29,024	32,282	29,673	33,309	31,330	31,830
Southeast Asia	7,541	7,304	8,040	10,610	9,260	9,260
Caribbean	2,193	2,159	2,327	2,386	2,510	2,510
Others	574	590	677	715	735	735
Total	90,981	101,176	98,832	122,956	109,760	111,760
Production						
North America	348,719	342,874	307,843	388,346	395,591	395,791
South America	93,105	103,988	119,769	116,326	108,565	109,565
European Union - 28	58,272	68,123	58,896	64,259	73,960	74,160
Other Europe	8,291	7,810	4,915	7,733	8,066	8,066
Former Soviet Union - 12	18,434	34,121	32,310	46,898	42,660	43,774
Middle East	6,448	7,164	6,330	6,753	6,348	6,548
North Africa	6,780	5,722	5,891	6,001	5,951	5,951
Sub-Saharan Africa	57,860	62,092	60,564	64,661	62,946	62,946
East Asia	178,955	194,585	207,760	220,621	217,649	217,649
South Asia	27,663	28,536	29,705	31,830	29,660	30,160
Central America	3,549	3,698	3,740	3,743	3,743	3,743
Southeast Asia	26,135	28,138	28,893	30,663	31,656	31,656
Others	1,168	1,312	1,380	1,204	1,282	1,282
Total	835,379	888,163	867,996	989,038	988,077	991,291
Domestic Consumption						
North America	325,810	318,550	301,578	337,445	346,527	348,597
South America	73,773	74,921	78,356	83,045	85,695	85,820
European Union - 28	64,900	69,500	69,600	76,500	77,500	78,500
Other Europe	6,741	6,392	5,194	5,903	6,160	6,160
Former Soviet Union - 12	13,185	16,420	18,085	21,435	23,160	23,260
Middle East	16,885	17,348	18,131	19,010	20,435	20,635
North Africa	18,525	18,000	18,450	20,450	21,650	21,650
Sub-Saharan Africa	56,618	60,503	60,057	63,134	62,782	62,782
East Asia	209,870	217,047	229,434	243,371	247,985	247,985
South Asia	23,981	23,770	24,480	26,870	27,570	27,570
Southeast Asia	32,893	34,357	35,609	37,560	38,960	38,960
Central America	6,375	6,425	6,200	6,625	6,800	6,800
Others	3,420	3,369	3,556	3,531	3,685	3,685
Total	852,976	866,602	868,730	944,879	968,909	972,404
Ending Stocks						
North America	31,019	27,803	23,469	35,586	51,807	50,363
South America	18,156	12,808	17,538	22,139	22,161	22,114
European Union - 28	5,233	6,682	5,147	6,424	7,384	7,584
Other Europe	1,212	771	353	982	973	973
Former Soviet Union - 12	1,904	2,445	2,004	3,236	3,316	3,330
Middle East	3,918	4,548	3,491	4,340	4,108	4,108
North Africa	2,102	2,960	1,669	3,024	2,515	2,515
Sub-Saharan Africa	8,533	9,133	8,580	9,514	7,771	8,503
East Asia	52,082	61,836	69,729	80,266	81,151	81,660
South Asia	1,549	1,680	2,080	3,269	2,680	3,209
Southeast Asia	3,504	3,058	3,220	4,174	4,295	4,295
Central America	547	564	507	572	690	690
Others	250	241	275	274	296	296
Total	130,009	134,529	138,062	173,800	189,147	189,640

NOTES: Regional definitions appear on last page of this circular. Imports are reported on a trade year basis. All other data are reported using local marketing years.

World Barley Trade
October/September Year, Thousand Metric Tons

	2010/11	2011/12	2012/13	2013/14	2014/15 Jan	2014/15 Feb
TY Exports						
Argentina	1,531	3,631	3,647	2,829	1,600	1,600
Australia	4,088	5,819	4,621	6,262	4,500	4,500
Canada	1,052	1,437	1,316	1,714	1,200	1,300
European Union	4,581	3,646	6,473	4,926	6,700	6,700
India	30	52	542	546	300	300
Kazakhstan	224	659	151	575	500	500
Moldova	10	5	20	15	15	15
Russia	969	3,668	2,366	2,762	4,300	4,400
Serbia	9	14	26	25	25	25
Ukraine	2,446	2,166	2,659	3,827	2,700	2,700
Others	35	120	151	44	10	10
Subtotal	14,975	21,217	21,972	23,525	21,850	22,050
United States	222	179	163	336	250	250
World Total	15,197	21,396	22,135	23,861	22,100	22,300
TY Imports						
Algeria	262	479	364	700	600	600
Belarus	25	100	25	50	100	100
Brazil	362	274	369	400	400	400
China	1,656	2,541	2,184	4,891	4,500	4,500
Colombia	251	301	232	275	275	275
Iran	500	1,700	1,100	900	1,200	1,200
Israel	287	276	244	275	300	300
Japan	1,359	1,257	1,356	1,294	1,300	1,300
Jordan	544	736	831	950	650	650
Kuwait	317	376	388	400	400	400
Libya	179	183	573	500	550	550
Mexico	26	144	47	108	100	100
Morocco	222	536	147	400	500	500
Peru	83	97	103	100	100	100
Russia	411	372	278	125	100	100
Saudi Arabia	6,200	8,600	10,200	8,500	7,000	7,000
Syria	300	200	300	250	500	500
Tunisia	281	218	764	456	300	300
Turkey	39	46	266	596	750	750
United Arab Emirates	334	524	541	550	550	550
Others	1,259	1,428	951	917	935	935
Subtotal	14,897	20,388	21,263	22,637	21,110	21,110
Unaccounted	152	538	441	702	390	690
United States	148	470	431	522	600	500
World Total	15,197	21,396	22,135	23,861	22,100	22,300

TY=Trade Year, see Endnotes.

World Barley Production, Consumption, and Stocks
Local Marketing Years, Thousand Metric Tons

	2010/11	2011/12	2012/13	2013/14	2014/15 Jan	2014/15 Feb
Production						
Algeria	1,500	1,350	1,500	1,500	1,300	1,300
Argentina	2,950	4,500	5,000	4,750	3,000	3,000
Australia	7,995	8,221	7,472	9,539	7,600	7,600
Belarus	1,966	1,979	1,917	1,674	2,100	2,100
Canada	7,627	7,892	8,012	10,237	7,120	7,120
China	1,972	1,637	1,626	1,500	1,550	1,550
Ethiopia	1,703	1,592	1,782	2,053	2,100	2,100
European Union	53,691	51,883	54,875	59,639	59,927	59,927
India	1,350	1,660	1,620	1,750	1,810	1,810
Iran	3,580	2,900	3,400	3,200	3,200	3,200
Kazakhstan	1,313	2,593	1,500	2,539	2,500	2,412
Morocco	2,570	2,340	1,200	2,700	1,700	1,700
Russia	8,350	16,938	13,952	15,389	19,500	20,000
Turkey	5,900	7,000	5,500	7,300	4,000	4,000
Ukraine	8,484	9,098	6,935	7,561	9,400	9,450
Others	8,247	8,569	8,748	9,319	9,083	9,081
Subtotal	119,198	130,152	125,039	140,650	135,890	136,350
United States	3,924	3,370	4,768	4,719	3,849	3,849
World Total	123,122	133,522	129,807	145,369	139,739	140,199
Total Consumption						
Algeria	1,600	1,800	2,000	2,050	2,050	2,050
Argentina	1,135	1,200	1,300	1,600	1,600	1,600
Australia	4,200	3,300	3,000	3,300	3,300	3,300
Belarus	2,000	2,100	2,000	1,800	2,100	2,100
Canada	7,464	6,916	6,809	7,746	6,720	6,700
China	4,050	3,800	4,000	6,300	6,100	6,100
Ethiopia	1,725	1,600	1,725	2,000	2,100	2,100
European Union	56,610	51,200	51,000	53,500	52,500	52,500
Iran	3,900	4,100	4,600	4,500	4,500	4,500
Kazakhstan	1,475	1,825	1,375	2,000	2,000	1,900
Morocco	3,050	3,100	1,900	2,300	2,800	2,800
Russia	9,500	14,300	12,100	12,600	14,300	14,400
Saudi Arabia	6,325	7,225	8,325	8,425	8,525	8,525
Turkey	6,000	6,750	6,200	6,950	6,050	6,050
Ukraine	6,000	6,300	5,100	5,100	4,900	4,900
Others	14,894	15,778	16,138	16,824	16,844	16,844
Subtotal	131,683	131,048	127,043	136,320	136,410	137,008
United States	4,536	4,170	4,638	4,775	4,394	4,285
World Total	136,219	135,218	131,681	141,095	140,804	141,293
Ending Stocks						
Algeria	1,236	1,435	1,194	1,194	1,044	1,044
Canada	1,502	1,195	983	1,924	1,149	1,069
European Union	7,938	6,069	5,071	5,513	6,340	6,340
Iran	1,348	1,348	1,748	1,348	1,248	1,248
Russia	1,386	848	726	973	1,973	2,273
Saudi Arabia	1,323	2,814	3,006	4,096	3,586	3,586
Ukraine	794	1,172	873	883	1,388	1,238
Others	6,875	6,464	5,426	7,329	5,449	5,478
Subtotal	22,402	21,345	19,027	23,260	22,177	22,276
United States	1,945	1,306	1,750	1,791	1,790	1,681
World Total	24,347	22,651	20,777	25,051	23,967	23,957

Regional Barley Imports, Production, Consumption, and Stocks

Thousand Metric Tons

	2010/11	2011/12	2012/13	2013/14	Jan 2014/15	Feb 2014/15
TY Imports						
North America	227	620	499	639	725	625
South America	922	851	1,064	960	985	985
European Union - 28	288	364	52	58	50	50
Other Europe	189	209	127	175	175	175
Former Soviet Union - 12	648	697	375	280	340	340
Middle East	8,604	12,543	13,956	12,462	11,410	11,410
North Africa	960	1,458	1,885	2,106	1,975	1,975
Sub-Saharan Africa	77	105	57	120	80	80
East Asia	3,107	3,924	3,663	6,314	5,925	5,925
South Asia	8	68	7	30	30	30
Oceania	15	19	9	15	15	15
Total	15,045	20,858	21,694	23,159	21,710	21,610
Production						
North America	12,223	11,749	13,812	15,506	11,519	11,519
South America	3,869	5,530	6,084	5,880	4,145	4,145
European Union - 28	53,691	51,883	54,875	59,639	59,927	59,927
Other Europe	1,142	1,189	1,193	1,268	1,274	1,274
Former Soviet Union - 12	21,574	32,227	25,958	29,153	35,125	35,587
Middle East	11,474	11,691	10,302	12,449	8,648	8,648
North Africa	4,546	4,410	3,309	4,729	4,109	4,109
Sub-Saharan Africa	2,095	2,099	2,283	2,521	2,613	2,613
East Asia	2,215	1,939	1,928	1,812	1,852	1,850
South Asia	1,990	2,267	2,152	2,457	2,517	2,517
Oceania	8,303	8,538	7,911	9,955	8,010	8,010
Total	123,122	133,522	129,807	145,369	139,739	140,199
Domestic Consumption						
North America	12,700	11,786	12,347	13,221	11,814	11,685
South America	2,936	3,077	3,327	3,661	3,695	3,695
European Union - 28	56,610	51,200	51,000	53,500	52,500	52,500
Other Europe	1,339	1,366	1,298	1,423	1,422	1,422
Former Soviet Union - 12	20,587	26,293	22,314	23,500	25,075	25,075
Middle East	19,884	22,016	22,785	24,181	23,281	23,281
North Africa	5,882	6,186	5,555	6,030	6,728	6,728
Sub-Saharan Africa	2,212	2,138	2,290	2,562	2,670	2,670
East Asia	5,772	5,555	5,806	8,055	7,855	7,855
South Asia	1,992	2,197	2,063	1,912	2,018	2,018
Oceania	4,550	3,650	3,425	3,725	3,725	3,725
Total	134,464	135,464	132,210	141,770	140,783	140,654
Ending Stocks						
North America	3,647	2,621	3,014	3,954	3,128	2,939
South America	818	547	685	964	790	799
European Union - 28	7,938	6,069	5,071	5,513	6,340	6,340
Other Europe	193	204	227	221	223	223
Former Soviet Union - 12	2,813	2,735	2,193	2,463	4,038	4,200
Middle East	4,162	5,933	6,042	7,297	5,819	5,819
North Africa	2,612	2,426	1,720	2,524	1,775	1,775
Sub-Saharan Africa	232	283	330	409	432	432
East Asia	672	976	760	831	751	751
South Asia	220	281	144	255	259	259
Oceania	1,040	576	591	620	412	420
Total	24,347	22,651	20,777	25,051	23,967	23,957

NOTES: Regional definitions appear on last page of this circular. Imports are reported on a trade year basis. All other data are reported using local marketing years.

World Sorghum Trade
October/September Year, Thousand Metric Tons

	2010/11	2011/12	2012/13	2013/14	2014/15 Jan	2014/15 Feb
TY Exports						
Argentina	1,893	2,163	3,059	953	1,300	1,500
Australia	575	1,185	1,425	405	800	800
Ethiopia	75	75	75	75	75	75
India	31	132	231	89	50	50
Nigeria	60	75	50	50	50	50
Ukraine	34	113	124	229	150	150
Uruguay	0	23	26	30	30	30
Others	147	139	149	162	140	140
Subtotal	2,815	3,905	5,139	1,993	2,595	2,795
United States	3,823	1,549	2,136	5,843	6,800	7,500
World Total	6,638	5,454	7,275	7,836	9,395	10,295
TY Imports						
Chile	729	544	404	150	250	250
China	4	84	631	4,161	6,200	7,000
Colombia	391	592	591	104	250	250
European Union	922	126	291	186	50	100
Japan	1,418	1,481	1,897	1,003	1,000	1,000
Kenya	11	74	102	100	100	100
Mexico	2,379	1,369	1,789	162	100	100
Saudi Arabia	5	69	127	147	150	150
Sudan	200	125	175	75	200	200
Taiwan	97	84	116	111	100	100
Others	564	534	509	594	390	390
Subtotal	6,720	5,082	6,632	6,793	8,790	9,640
Unaccounted	-83	369	400	1,040	600	648
United States	1	3	243	3	5	7
World Total	6,638	5,454	7,275	7,836	9,395	10,295

TY=Trade Year, see Endnotes.

World Sorghum Production, Consumption, and Stocks
Local Marketing Years, Thousand Metric Tons

	2010/11	2011/12	2012/13	2013/14	2014/15 Jan	2014/15 Feb
Production						
Argentina	4,400	4,200	4,700	4,400	3,700	4,000
Australia	1,935	2,239	2,230	1,107	2,000	2,000
Brazil	2,314	2,222	2,102	1,890	2,000	2,000
Burkina	1,990	1,500	1,924	1,940	1,900	1,900
Cameroon	1,099	1,150	1,100	1,150	1,150	1,150
Chad	680	648	1,172	745	900	900
China	2,456	2,051	2,556	2,700	2,700	2,700
Ethiopia	3,960	3,951	3,604	4,114	4,000	4,000
India	7,000	6,030	5,300	5,250	5,000	5,000
Mali	1,257	1,191	1,212	820	1,300	1,300
Mexico	7,385	6,425	6,174	8,500	7,700	7,300
Niger	1,300	807	1,376	1,287	1,200	1,200
Nigeria	6,750	6,900	5,943	6,500	6,300	6,300
Sudan	2,630	4,605	4,524	2,249	3,500	3,500
Tanzania	800	807	839	832	840	840
Others	6,432	7,047	6,722	7,011	6,947	6,947
Subtotal	52,388	51,773	51,478	50,495	51,137	51,037
United States	8,775	5,410	6,293	9,966	10,988	10,988
World Total	61,163	57,183	57,771	60,461	62,125	62,025
Total Consumption						
Argentina	1,900	1,900	2,300	2,700	2,800	2,900
Australia	1,405	1,105	1,105	755	1,205	1,205
Brazil	2,075	2,175	2,300	2,000	2,000	2,000
Burkina	1,900	1,500	1,900	1,900	1,900	1,900
Cameroon	1,109	1,175	1,110	1,165	1,175	1,175
Chad	700	650	1,150	850	900	900
China	2,200	2,200	3,200	6,800	8,800	9,600
Ethiopia	3,700	3,700	3,700	4,200	4,200	4,200
India	6,800	6,000	5,150	5,200	4,900	4,900
Japan	1,460	1,475	1,900	1,000	1,000	1,000
Mali	1,300	1,300	1,200	950	1,200	1,200
Mexico	9,400	8,100	8,100	8,300	7,800	7,500
Niger	1,250	950	1,200	1,300	1,300	1,300
Nigeria	6,700	6,800	5,900	6,450	6,250	6,250
Sudan	3,000	4,500	4,700	2,550	3,700	3,700
Others	9,728	9,487	9,169	8,475	8,700	8,750
Subtotal	54,665	54,510	52,856	55,575	58,333	59,092
United States	5,277	3,916	4,796	4,109	4,191	3,556
World Total	59,942	58,426	57,652	59,684	62,524	62,648
Ending Stocks						
Argentina	950	167	784	1,284	784	984
China	467	366	326	376	451	451
Mali	323	214	226	96	196	196
Mexico	724	418	281	643	643	543
Niger	117	24	225	237	162	162
Nigeria	190	215	208	208	208	208
Sudan	399	609	588	357	352	352
Others	2,026	2,054	1,746	1,481	1,340	1,343
Subtotal	5,196	4,067	4,384	4,682	4,136	4,239
United States	697	583	385	864	808	684
World Total	5,893	4,650	4,769	5,546	4,944	4,923

Regional Sorghum Imports, Production, Consumption, and Stocks

Thousand Metric Tons

	2010/11	2011/12	2012/13	2013/14	Jan 2014/15	Feb 2014/15
TY Imports						
North America	2,380	1,372	2,032	165	105	107
South America	1,218	1,200	1,071	303	565	565
European Union - 28	922	126	291	186	50	100
Other Europe	0	0	0	0	0	0
Middle East	121	101	194	231	205	205
North Africa	120	54	0	43	5	5
Sub-Saharan Africa	399	550	608	531	530	530
East Asia	1,523	1,655	2,650	5,281	7,305	8,105
Southeast Asia	17	13	18	40	20	20
Others	21	14	11	16	10	10
Total	6,721	5,085	6,875	6,796	8,795	9,647
Production						
North America	16,160	11,835	12,467	18,466	18,688	18,288
Central America	287	312	339	335	335	335
Caribbean	128	128	128	128	128	128
South America	7,351	7,124	7,496	7,003	6,462	6,762
European Union - 28	629	671	473	616	736	736
Middle East	853	764	814	800	780	780
North Africa	708	847	763	763	763	763
Sub-Saharan Africa	23,392	24,804	24,793	22,839	24,149	24,149
East Asia	2,460	2,054	2,560	2,704	2,704	2,704
South Asia	7,145	6,175	5,445	5,395	5,145	5,145
Southeast Asia	54	54	55	55	55	55
Oceania	1,935	2,239	2,230	1,107	2,000	2,000
Others	61	176	208	250	180	180
Total	61,163	57,183	57,771	60,461	62,125	62,025
Domestic Consumption						
North America	14,677	12,016	12,896	12,409	11,991	11,056
Central America	300	320	325	335	335	335
Caribbean	128	128	128	128	128	128
South America	5,739	6,006	6,085	5,754	6,102	6,202
European Union - 28	1,535	760	795	795	770	820
Middle East	962	789	1,052	894	985	985
North Africa	857	908	756	794	756	756
Sub-Saharan Africa	23,491	24,852	25,064	23,474	24,664	24,664
East Asia	3,764	3,771	5,221	7,921	9,910	10,710
South Asia	6,955	6,155	5,305	5,359	5,055	5,055
Southeast Asia	61	68	68	61	90	90
Oceania	1,405	1,105	1,105	755	1,205	1,205
Others	30	55	80	25	30	30
Total	59,904	56,933	58,880	58,704	62,021	62,036
Ending Stocks						
North America	1,421	1,001	666	1,507	1,451	1,227
Central America	32	25	39	40	40	40
South America	1,429	695	1,119	1,472	997	1,197
European Union - 28	21	14	5	17	13	13
Middle East	35	56	65	58	58	58
North Africa	69	60	66	76	83	83
Sub-Saharan Africa	1,640	1,878	2,032	1,636	1,446	1,446
East Asia	549	451	413	466	540	540
South Asia	327	223	145	108	155	158
Oceania	361	230	195	147	142	142
Others	9	17	24	19	19	19
Total	5,893	4,650	4,769	5,546	4,944	4,923

NOTES: Regional definitions appear on last page of this circular. Imports are reported on a trade year basis. All other data are reported using local marketing years.

World Oats Trade
October/September Year, Thousand Metric Tons

	2010/11	2011/12	2012/13	2013/14	2014/15 Jan	2014/15 Feb
TY Exports						
Argentina	6	12	1	5	5	5
Australia	209	174	240	235	225	225
Brazil	9	3	6	5	5	5
Canada	1,496	1,763	1,359	1,728	1,700	1,700
Chile	129	106	42	50	100	100
European Union	113	176	126	293	250	250
Russia	1	18	4	7	10	10
Others	4	6	6	10	10	10
Subtotal	1,967	2,258	1,784	2,333	2,305	2,305
United States	37	28	18	28	30	30
World Total	2,004	2,286	1,802	2,361	2,335	2,335
TY Imports						
Albania	5	0	0	0	0	0
Algeria	4	9	7	10	10	10
Argentina	0	0	0	0	0	0
Bosnia and Herzegovina	3	3	2	5	5	5
Canada	19	11	9	26	10	10
China	58	68	87	116	125	125
Colombia	2	1	1	5	5	5
Ecuador	11	22	19	20	20	20
European Union	4	3	4	3	5	5
Japan	64	54	51	46	50	50
Mexico	103	134	111	110	100	100
Norway	7	49	36	50	40	40
South Africa	15	11	11	25	25	25
Switzerland	49	56	46	50	50	50
Uruguay	11	8	6	5	5	5
Others	12	13	2	0	0	0
Subtotal	367	442	392	471	450	450
Unaccounted	169	114	69	29	185	185
United States	1,468	1,730	1,341	1,861	1,700	1,700
World Total	2,004	2,286	1,802	2,361	2,335	2,335

TY=Trade Year, see Endnotes.

World Oats Production, Consumption, and Stocks
Local Marketing Years, Thousand Metric Tons

	2010/11	2011/12	2012/13	2013/14	2014/15 Jan	2014/15 Feb
Production						
Algeria	88	67	110	110	110	110
Argentina	660	345	496	445	460	460
Australia	1,128	1,262	1,121	1,326	1,150	1,150
Belarus	442	448	422	352	450	450
Brazil	379	354	361	380	380	380
Canada	2,451	3,158	2,812	3,906	2,910	2,910
Chile	564	451	680	610	700	700
China	525	600	600	580	600	600
European Union	7,500	7,927	7,909	8,388	7,869	7,869
Kazakhstan	134	258	200	305	250	226
Mexico	111	51	84	90	90	90
Norway	299	231	236	236	236	236
Russia	3,218	5,332	4,027	4,932	5,000	5,250
Turkey	204	218	210	210	210	210
Ukraine	458	506	630	467	580	610
Others	296	372	315	324	327	327
Subtotal	18,457	21,580	20,213	22,661	21,322	21,578
United States	1,188	728	892	938	1,011	1,011
World Total	19,645	22,308	21,105	23,599	22,333	22,589
Total Consumption						
Algeria	89	75	119	120	120	120
Argentina	650	350	500	425	475	475
Australia	900	1,100	925	1,025	1,000	1,000
Belarus	475	450	400	375	425	425
Brazil	370	350	350	375	375	375
Canada	1,530	1,361	1,513	1,746	1,450	1,600
Chile	475	325	575	575	600	600
China	625	625	675	700	725	725
European Union	7,793	7,800	7,700	8,200	7,700	7,700
Kazakhstan	130	225	225	275	250	225
Mexico	185	185	195	185	190	190
Norway	295	270	295	270	295	295
Russia	3,450	5,000	4,300	4,900	5,000	5,200
Turkey	210	215	215	215	215	215
Ukraine	475	500	600	475	575	600
Others	467	519	451	488	489	489
Subtotal	18,124	19,589	19,136	20,492	20,044	20,394
United States	2,799	2,499	2,743	2,759	2,623	2,623
World Total	20,923	22,088	21,879	23,251	22,667	23,017
Ending Stocks						
Argentina	76	57	51	66	46	46
Australia	146	134	60	161	86	86
Canada	733	805	506	1,031	801	651
China	84	127	139	135	135	135
European Union	832	796	902	778	702	702
Russia	167	485	203	229	219	269
Ukraine	40	52	81	67	67	72
Others	169	196	206	197	191	192
Subtotal	2,247	2,652	2,148	2,664	2,247	2,153
United States	982	797	527	359	442	442
World Total	3,229	3,449	2,675	3,023	2,689	2,595

Regional Oats Imports, Production, Consumption, and Stocks

Thousand Metric Tons

	2010/11	2011/12	2012/13	2013/14	Jan 2014/15	Feb 2014/15
TY Imports						
North America	1,590	1,875	1,461	1,997	1,810	1,810
South America	24	31	26	30	30	30
European Union - 28	4	3	4	3	5	5
Other Europe	66	110	86	105	95	95
Former Soviet Union - 12	6	7	0	0	0	0
Middle East	4	4	0	0	0	0
North Africa	4	9	7	10	10	10
Sub-Saharan Africa	15	11	11	25	25	25
East Asia	122	122	138	162	175	175
Oceania	0	0	0	0	0	0
Total	1,835	2,172	1,733	2,332	2,150	2,150
Production						
North America	3,750	3,937	3,788	4,934	4,011	4,011
South America	1,644	1,191	1,577	1,478	1,585	1,585
European Union - 28	7,500	7,927	7,909	8,388	7,869	7,869
Other Europe	428	373	369	370	369	369
Former Soviet Union - 12	4,257	6,549	5,285	6,062	6,286	6,542
Middle East	204	218	210	210	210	210
North Africa	125	163	166	166	166	166
Sub-Saharan Africa	34	57	60	55	55	55
East Asia	527	602	602	582	602	602
Oceania	1,176	1,291	1,139	1,354	1,180	1,180
Total	19,645	22,308	21,105	23,599	22,333	22,589
Domestic Consumption						
North America	4,514	4,045	4,451	4,690	4,263	4,413
South America	1,563	1,092	1,490	1,448	1,525	1,525
European Union - 28	7,793	7,800	7,700	8,200	7,700	7,700
Other Europe	486	478	474	453	487	487
Former Soviet Union - 12	4,535	6,180	5,531	6,031	6,256	6,456
Middle East	210	215	215	215	215	215
North Africa	126	172	175	176	176	176
Sub-Saharan Africa	58	53	72	92	80	80
East Asia	685	685	730	750	775	775
Oceania	948	1,129	943	1,053	1,030	1,030
Total	20,918	21,849	21,781	23,108	22,507	22,857
Ending Stocks						
North America	1,720	1,605	1,034	1,393	1,246	1,096
South America	126	93	131	130	110	110
European Union - 28	832	796	902	778	702	702
Other Europe	50	48	31	53	30	30
Former Soviet Union - 12	235	592	332	346	356	412
Middle East	10	17	12	7	2	2
North Africa	1	1	1	1	1	1
Sub-Saharan Africa	14	29	28	16	16	16
East Asia	95	134	144	138	140	140
Oceania	146	134	60	161	86	86
Total	3,229	3,449	2,675	3,023	2,689	2,595

NOTES: Regional definitions appear on last page of this circular. Imports are reported on a trade year basis. All other data are reported using local marketing years.

World Rye Trade
October/September Year, Thousand Metric Tons

	2010/11	2011/12	2012/13	2013/14	2014/15 Jan	2014/15 Feb
TY Exports						
Belarus	150	25	25	25	25	25
Canada	221	159	181	96	100	100
European Union	71	59	122	201	150	150
Russia	22	284	78	83	100	100
Ukraine	2	9	16	59	5	25
Others	3	4	0	0	0	0
Subtotal	469	540	422	464	380	400
United States	3	8	7	6	5	5
World Total	472	548	429	470	385	405
TY Imports						
European Union	36	302	68	96	50	50
Israel	19	11	34	33	25	25
Japan	101	46	27	37	40	40
Korea, South	11	11	12	8	10	10
Norway	12	11	21	16	15	15
Russia	150	0	25	25	25	25
Switzerland	2	2	9	6	5	5
Others	0	8	1	0	0	0
Subtotal	331	391	197	221	170	170
Unaccounted	-7	-17	11	45	15	35
United States	148	174	221	204	200	200
World Total	472	548	429	470	385	405

TY=Trade Year, see Endnotes.

World Rye Production, Consumption, and Stocks
Local Marketing Years, Thousand Metric Tons

	2010/11	2011/12	2012/13	2013/14	2014/15 Jan	2014/15 Feb
Production						
Belarus	735	801	1,082	648	800	800
Canada	237	241	337	223	195	195
Chile	2	59	62	60	70	70
European Union	7,576	6,900	8,763	10,188	8,790	8,790
Russia	1,642	2,967	2,132	3,360	4,000	3,300
Turkey	365	366	370	350	350	350
Ukraine	464	579	676	638	450	475
Others	197	181	183	168	163	174
Subtotal	11,218	12,094	13,605	15,635	14,818	14,154
United States	190	154	166	194	183	183
World Total	11,408	12,248	13,771	15,829	15,001	14,337
Total Consumption						
Argentina	40	45	40	52	40	40
Belarus	650	750	1,000	650	750	750
Canada	136	101	124	108	100	100
Chile	2	59	62	60	70	70
European Union	8,204	7,400	8,700	9,700	8,900	8,900
Japan	105	55	25	40	40	40
Kazakhstan	40	30	50	40	50	65
Russia	1,850	2,850	2,000	3,100	3,800	3,300
Turkey	350	375	375	350	350	350
Ukraine	650	625	625	625	475	475
Others	155	142	170	136	128	128
Subtotal	12,216	12,406	13,205	14,867	14,691	14,231
United States	331	311	387	424	402	402
World Total	12,547	12,717	13,592	15,291	15,093	14,633
Ending Stocks						
Belarus	79	110	167	140	165	165
Canada	51	25	46	44	44	39
European Union	1,013	745	793	1,189	979	979
Japan	14	5	7	4	4	4
Russia	250	129	153	365	490	290
Turkey	32	24	18	18	18	18
Ukraine	189	132	166	128	98	98
Others	5	3	3	6	6	2
Subtotal	1,633	1,173	1,353	1,894	1,804	1,595
United States	20	11	10	7	10	10
World Total	1,653	1,184	1,363	1,901	1,814	1,605

Regional Rye Imports, Production, Consumption, and Stocks

Thousand Metric Tons

	2010/11	2011/12	2012/13	2013/14	Jan 2014/15	Feb 2014/15
TY Imports						
North America	148	174	221	204	200	200
South America	0	0	0	0	0	0
European Union - 28	36	302	68	96	50	50
Other Europe	14	13	31	22	20	20
Former Soviet Union - 12	150	5	25	25	25	25
Middle East	19	14	34	33	25	25
Sub-Saharan Africa	0	0	0	0	0	0
East Asia	112	57	39	45	50	50
Oceania	0	0	0	0	0	0
Total	479	565	418	425	370	370
Production						
North America	427	395	503	417	378	378
South America	45	107	105	115	113	113
European Union - 28	7,576	6,900	8,763	10,188	8,790	8,790
Other Europe	76	62	47	47	47	47
Former Soviet Union - 12	2,883	4,375	3,940	4,689	5,300	4,636
Middle East	365	366	370	350	350	350
Sub-Saharan Africa	3	3	3	3	3	3
East Asia	0	0	0	0	0	0
Oceania	33	40	40	20	20	20
Total	11,408	12,248	13,771	15,829	15,001	14,337
Domestic Consumption						
North America	467	412	511	532	502	502
South America	45	107	105	115	113	113
European Union - 28	8,204	7,400	8,700	9,700	8,900	8,900
Other Europe	89	75	78	69	67	67
Former Soviet Union - 12	3,190	4,255	3,675	4,415	5,075	4,590
Middle East	369	386	409	383	375	375
Sub-Saharan Africa	3	2	3	3	3	3
East Asia	116	66	37	48	50	50
Oceania	30	40	40	20	20	20
Total	12,513	12,743	13,558	15,285	15,105	14,620
Ending Stocks						
North America	71	36	56	51	54	49
South America	0	0	0	0	0	0
European Union - 28	1,013	745	793	1,189	979	979
Other Europe	0	0	0	0	0	0
Former Soviet Union - 12	523	374	489	639	759	555
Middle East	32	24	18	18	18	18
Sub-Saharan Africa	0	0	0	0	0	0
East Asia	14	5	7	4	4	4
Oceania	0	0	0	0	0	0
Total	1,653	1,184	1,363	1,901	1,814	1,605

NOTES: Regional definitions appear on last page of this circular. Imports are reported on a trade year basis. All other data are reported using local marketing years.



HISTORICAL DATA SERIES FOR SELECTED REGIONS AND COUNTRIES

CONTENTS

European Union: Grain Supply and Demand.....	36
China: Grain Supply and Demand	37
Other Europe: Grain Supply and Demand	38
Former Soviet Union: Grain Supply and Demand	39
Wheat Supply and Disappearance: Selected Exporters.....	43
Corn Supply and Disappearance: Selected Exporters	45
Barley Supply and Disappearance: Selected Exporters	47
Sorghum Supply and Disappearance: Selected Exporters	48
U.S. Grains: Supply and Distribution.....	49
Total Wheat and Coarse Grains: Supply and Demand.....	50
World Wheat and Coarse Grains: Supply and Demand	51
World Corn and Barley: Supply and Demand	52
World Rice: Supply and Demand.....	53

European Union: Grain Supply and Demand

Wheat and Coarse Grains Millions of Metric Tons/Hectares

	Area Harvested	Yield	Production	Imports	Exports	Feed Dom.	Domestic Consumption	Ending Stocks
Wheat								
2003/04	24.5	4.5	111.4	7.4	9.9	52.5	115.8	12.0
2004/05	26.2	5.6	147.7	7.1	14.7	59.3	123.9	28.3
2005/06	26.0	5.1	132.9	6.8	15.7	63.0	128.2	24.0
2006/07	24.7	5.1	125.7	5.2	13.9	60.2	126.2	14.8
2007/08	24.9	4.9	120.8	6.8	12.4	52.4	117.2	12.8
2008/09	26.8	5.7	151.9	7.7	25.4	60.5	127.6	19.4
2009/10	26.0	5.4	139.7	5.4	22.3	57.5	125.6	16.6
2010/11	26.0	5.3	136.7	4.6	23.1	52.5	122.8	11.9
2011/12	25.8	5.3	138.2	7.4	16.7	57.5	127.2	13.5
2012/13	26.0	5.2	133.9	5.3	22.7	51.0	119.3	10.8
2013/14	25.8	5.6	143.5	4.0	31.9	48.0	115.8	10.6
2014/15	26.8	5.8	155.7	5.5	31.0	56.0	124.5	16.3
Coarse Grains								
2003/04	33.2	4.0	134.1	8.2	4.0	111.9	147.7	13.6
2004/05	33.9	5.0	169.1	3.0	4.8	118.9	155.2	25.6
2005/06	33.2	4.5	149.5	2.7	4.3	112.4	150.7	22.8
2006/07	32.4	4.3	140.0	8.1	4.5	112.9	150.6	15.6
2007/08	32.6	4.3	138.7	20.3	4.5	121.6	157.1	13.0
2008/09	34.0	4.8	164.9	3.1	5.7	116.1	154.2	21.3
2009/10	32.9	4.8	157.6	2.9	3.0	114.8	152.4	26.2
2010/11	30.2	4.7	142.8	8.5	6.2	116.9	154.6	16.7
2011/12	30.2	5.0	149.9	7.0	6.5	113.2	151.5	15.6
2012/13	31.4	4.7	145.9	11.8	7.4	113.7	153.1	12.9
2013/14	31.3	5.1	158.5	16.2	8.6	122.4	164.3	14.7
2014/15	31.0	5.4	168.2	8.3	9.6	122.8	164.9	16.7
Wheat and Coarse Grains								
2003/04	57.7	4.3	245.5	15.6	13.9	164.3	263.5	25.6
2004/05	60.1	5.3	316.8	10.0	19.5	178.2	279.1	53.9
2005/06	59.1	4.8	282.3	9.4	20.0	175.4	278.9	46.8
2006/07	57.0	4.7	265.7	13.2	18.5	173.1	276.8	30.4
2007/08	57.5	4.5	259.5	27.1	16.9	174.1	274.2	25.9
2008/09	60.9	5.2	316.8	10.8	31.1	176.6	281.8	40.6
2009/10	58.9	5.0	297.3	8.2	25.3	172.3	278.0	42.8
2010/11	56.2	5.0	279.5	13.1	29.3	169.4	277.5	28.7
2011/12	56.0	5.1	288.1	14.3	23.3	170.7	278.7	29.1
2012/13	57.3	4.9	279.8	17.1	30.0	164.7	272.3	23.7
2013/14	57.2	5.3	302.0	20.2	40.6	170.4	280.0	25.3
2014/15	57.8	5.6	323.9	13.8	40.6	178.8	289.4	33.0

China: Grain Supply and Demand

Wheat and Coarse Grains Millions of Metric Tons/Hectares

	Area Harvested	Yield	Production	Imports	Exports	Feed Dom.	Domestic Consumption	Ending Stocks
Wheat								
2003/04	22.0	3.9	86.5	3.7	2.8	6.0	104.5	43.3
2004/05	21.6	4.3	92.0	6.7	1.2	4.0	102.0	38.8
2005/06	22.8	4.3	97.4	1.1	1.4	3.5	101.5	34.5
2006/07	23.6	4.6	108.5	0.4	2.8	4.0	102.0	38.6
2007/08	23.7	4.6	109.3	0.0	2.8	8.0	106.0	39.1
2008/09	23.6	4.8	112.5	0.5	0.7	8.0	105.5	45.8
2009/10	24.3	4.7	115.1	1.4	0.9	10.0	107.0	54.4
2010/11	24.3	4.7	115.2	0.9	0.9	13.0	110.5	59.1
2011/12	24.3	4.8	117.4	2.9	1.0	24.0	122.5	55.9
2012/13	24.3	5.0	121.0	3.0	1.0	25.0	125.0	54.0
2013/14	24.1	5.1	121.9	6.8	0.9	21.0	121.5	60.3
2014/15	24.1	5.2	126.0	1.5	1.0	23.0	124.0	62.8
Coarse Grains								
2003/04	27.0	4.6	124.5	1.5	7.7	99.6	138.8	46.0
2004/05	28.0	4.9	138.3	2.1	7.6	100.3	141.1	37.6
2005/06	28.8	5.1	147.8	2.3	3.8	103.5	147.1	36.9
2006/07	31.1	5.1	159.0	1.2	5.5	105.0	153.5	38.0
2007/08	31.9	5.0	159.2	1.2	0.9	106.7	157.9	39.5
2008/09	32.2	5.4	172.4	1.7	0.2	109.1	161.2	52.2
2009/10	33.4	5.1	169.8	3.8	0.2	119.1	173.3	52.3
2010/11	34.6	5.3	183.8	2.7	0.2	128.8	188.4	50.1
2011/12	35.5	5.6	198.6	7.9	0.1	132.0	196.2	60.4
2012/13	37.1	5.7	212.2	5.6	0.1	146.1	209.7	68.4
2013/14	38.4	5.9	225.1	12.4	0.0	161.8	227.6	78.3
2014/15	39.1	5.7	222.2	14.1	0.1	168.2	234.2	80.2
Wheat and Coarse Grains								
2003/04	49.0	4.3	211.0	5.3	10.5	105.6	243.3	89.3
2004/05	49.6	4.6	230.2	8.8	8.8	104.3	243.1	76.4
2005/06	51.6	4.8	245.3	3.4	5.2	107.0	248.6	71.4
2006/07	54.7	4.9	267.4	1.5	8.2	109.0	255.5	76.6
2007/08	55.6	4.8	268.5	1.2	3.7	114.7	263.9	78.6
2008/09	55.8	5.1	284.9	2.1	0.9	117.1	266.7	98.0
2009/10	57.6	4.9	284.9	5.2	1.1	129.1	280.3	106.7
2010/11	58.9	5.1	299.0	3.6	1.1	141.8	298.9	109.2
2011/12	59.8	5.3	316.0	10.9	1.1	156.0	318.7	116.3
2012/13	61.3	5.4	333.2	8.6	1.1	171.1	334.7	122.3
2013/14	62.5	5.6	347.0	19.2	0.9	182.8	349.1	138.5
2014/15	63.2	5.5	348.2	15.6	1.1	191.2	358.2	143.0

Other Europe: Grain Supply and Demand

Wheat and Coarse Grains Millions of Metric Tons/Hectares

	Area Harvested	Yield	Production	Imports	Exports	Feed Dom.	Domestic Consumption	Ending Stocks
Wheat								
2003/04	1.0	2.7	2.8	1.4	0.0	0.6	4.5	0.7
2004/05	1.1	4.3	4.6	1.4	0.3	0.9	5.2	1.3
2005/06	1.0	3.8	3.8	1.4	0.2	0.9	5.1	1.1
2006/07	1.0	3.6	3.5	1.5	0.3	0.7	4.6	1.2
2007/08	1.0	3.8	3.7	1.9	0.5	1.0	4.8	1.5
2008/09	0.9	4.4	4.0	1.7	0.4	1.2	5.1	1.7
2009/10	1.0	3.9	3.8	1.7	0.5	1.1	5.0	1.7
2010/11	0.9	3.7	3.2	1.6	0.6	0.9	4.7	1.2
2011/12	0.9	4.2	3.6	1.9	0.5	1.0	4.9	1.3
2012/13	0.9	4.1	3.5	1.6	0.7	1.0	4.7	1.0
2013/14	1.0	4.6	4.4	1.8	1.3	1.2	4.9	1.1
2014/15	0.9	4.4	3.9	1.9	0.9	1.2	5.0	1.1
Coarse Grains								
2003/04	2.1	3.1	6.6	0.7	0.1	6.9	7.9	0.7
2004/05	2.1	5.0	10.4	0.5	0.6	8.4	9.5	1.5
2005/06	2.1	4.8	10.2	0.6	1.3	8.6	9.8	1.3
2006/07	2.0	4.9	9.9	0.8	0.9	8.6	9.7	1.3
2007/08	2.0	3.4	6.9	0.9	0.1	6.8	7.9	1.1
2008/09	2.1	4.6	9.7	0.6	1.5	7.6	8.7	1.1
2009/10	2.0	4.9	9.7	0.7	1.4	7.5	8.7	1.4
2010/11	2.0	5.0	10.0	0.7	2.0	7.3	8.7	1.5
2011/12	2.1	4.6	9.5	0.8	2.4	7.0	8.4	1.0
2012/13	2.1	3.2	6.6	0.7	0.6	5.9	7.1	0.6
2013/14	2.0	4.7	9.5	0.8	1.8	6.6	7.9	1.3
2014/15	2.0	4.8	9.8	0.9	2.5	6.9	8.2	1.2
Wheat and Coarse Grains								
2003/04	3.1	3.0	9.4	2.0	0.1	7.4	12.4	1.4
2004/05	3.2	4.8	15.1	1.9	0.9	9.3	14.8	2.8
2005/06	3.1	4.5	14.0	2.0	1.4	9.5	14.9	2.4
2006/07	3.0	4.5	13.4	2.3	1.2	9.3	14.3	2.5
2007/08	3.0	3.5	10.6	2.7	0.6	7.8	12.6	2.6
2008/09	3.0	4.6	13.7	2.3	1.9	8.8	13.8	2.8
2009/10	3.0	4.5	13.5	2.4	1.9	8.5	13.7	3.2
2010/11	2.9	4.6	13.2	2.4	2.6	8.1	13.4	2.6
2011/12	2.9	4.5	13.1	2.7	2.9	8.1	13.2	2.4
2012/13	2.9	3.4	10.1	2.4	1.3	6.9	11.8	1.7
2013/14	3.0	4.6	13.9	2.7	3.0	7.9	12.8	2.3
2014/15	2.9	4.7	13.7	2.8	3.4	8.1	13.2	2.3

Former Soviet Union: Grain Supply and Demand
Wheat and Coarse Grains Millions of Metric Tons/Hectares

	Area Harvested	Yield	Production	Imports	Exports	Feed Dom.	Domestic Consumption	Ending Stocks
Wheat								
2008/09	50.6	2.3	115.5	6.6	38.2	25.2	76.5	21.9
2009/10	52.6	2.2	114.0	5.4	37.3	26.5	78.3	25.8
2010/11	45.8	1.8	81.0	5.5	13.9	24.4	75.7	22.7
2011/12	49.7	2.3	115.0	8.0	39.7	28.3	80.0	26.0
2012/13	44.0	1.8	77.8	7.2	25.4	21.5	71.7	13.9
2013/14	47.7	2.2	103.9	7.4	37.1	22.9	73.1	15.0
2014/15	46.6	2.4	112.3	7.6	37.7	24.6	75.9	21.4
Coarse Grains								
2008/09	30.2	2.6	79.2	0.7	17.2	41.5	58.1	9.4
2009/10	27.2	2.5	67.6	0.4	15.0	39.0	55.0	7.4
2010/11	21.9	2.2	47.5	1.2	8.8	28.4	41.8	5.5
2011/12	27.0	2.9	78.6	1.0	24.6	38.6	54.4	6.2
2012/13	27.5	2.5	68.2	0.7	19.9	35.6	50.2	5.0
2013/14	29.4	3.0	87.6	0.7	30.7	40.1	56.0	6.7
2014/15	30.3	3.0	91.4	0.8	30.3	43.9	60.1	8.5

Former Soviet Union: Grain Supply and Demand (Wheat)

Millions of Tons/Hectares

Country Mktg Year	Area Harvested	Yield	Production	MY Imports	MY Exports	Feed and Residual	Total Consumption	Ending Stocks
Former Soviet Union - 12								
Kazakhstan								
2011/12	13.7	1.7	22.7	0.0	11.8	2.6	7.6	6.2
2012/13	12.4	0.8	9.8	0.0	6.3	2.0	6.8	2.9
2013/14	13.0	1.1	13.9	0.0	8.1	2.0	6.8	2.0
2014/15	11.9	1.1	13.0	0.4	6.0	2.0	6.8	2.6
Russia								
2011/12	24.8	2.3	56.2	0.6	21.6	15.5	38.0	10.9
2012/13	21.3	1.8	37.7	1.2	11.3	11.9	33.6	5.0
2013/14	23.4	2.2	52.1	0.8	18.5	12.5	34.1	5.2
2014/15	23.6	2.5	59.0	0.4	20.0	13.0	35.5	9.1
Ukraine								
2011/12	6.7	3.4	22.3	0.1	5.4	6.1	15.0	5.4
2012/13	5.6	2.8	15.8	0.0	7.2	3.1	11.4	2.6
2013/14	6.6	3.4	22.3	0.1	9.8	3.4	11.5	3.7
2014/15	6.3	3.9	24.8	0.1	11.0	4.0	12.0	5.5
Uzbekistan								
2011/12	1.4	4.5	6.3	2.7	0.7	1.6	7.8	1.4
2012/13	1.4	4.8	6.7	1.9	0.4	1.7	8.0	1.6
2013/14	1.4	4.9	6.8	2.2	0.3	1.9	8.4	1.9
2014/15	1.4	5.1	7.2	2.1	0.3	2.2	8.9	2.0
Other Former Soviet Union - 12								
2011/12	3.2	2.3	7.4	4.7	0.2	2.5	11.6	2.2
2012/13	3.2	2.4	7.8	4.1	0.3	2.8	12.0	1.9
2013/14	3.4	2.6	8.8	4.3	0.4	3.1	12.3	2.2
2014/15	3.3	2.5	8.5	4.7	0.4	3.4	12.7	2.3
Total Former Soviet Union - 12								
2011/12	49.7	2.3	115.0	8.0	39.7	28.3	80.0	26.0
2012/13	44.0	1.8	77.8	7.2	25.4	21.5	71.7	13.9
2013/14	47.7	2.2	103.9	7.4	37.1	22.9	73.1	15.0
2014/15	46.6	2.4	112.3	7.6	37.7	24.6	75.9	21.4

Former Soviet Union: Grain Supply and Demand (Barley)

Millions of Tons/Hectares

Country Mktg Year	Area Harvested	Yield	Production	MY Imports	MY Exports	Feed and Residual	Total Consumption	Ending Stocks
Former Soviet Union - 12								
Kazakhstan								
2011/12	1.5	1.7	2.6	0.0	0.7	1.5	1.8	0.2
2012/13	1.6	0.9	1.5	0.0	0.2	1.2	1.4	0.2
2013/14	1.8	1.4	2.5	0.0	0.5	1.7	2.0	0.2
2014/15	1.9	1.3	2.4	0.0	0.5	1.6	1.9	0.2
Russia								
2011/12	7.7	2.2	16.9	0.4	3.5	9.8	14.3	0.8
2012/13	7.6	1.8	14.0	0.3	2.2	7.7	12.1	0.7
2013/14	8.0	1.9	15.4	0.1	2.7	8.2	12.6	1.0
2014/15	8.8	2.3	20.0	0.1	4.4	9.5	14.4	2.3
Ukraine								
2011/12	3.7	2.5	9.1	0.0	2.5	4.7	6.3	1.2
2012/13	3.3	2.1	6.9	0.0	2.1	3.5	5.1	0.9
2013/14	3.2	2.3	7.6	0.0	2.5	3.4	5.1	0.9
2014/15	3.2	3.0	9.5	0.0	4.2	3.3	4.9	1.2
Uzbekistan								
2011/12	0.1	3.2	0.2	0.1	0.0	0.3	0.3	0.0
2012/13	0.1	3.2	0.2	0.0	0.0	0.2	0.3	0.0
2013/14	0.1	3.2	0.2	0.0	0.0	0.2	0.3	0.0
2014/15	0.1	3.2	0.2	0.0	0.0	0.2	0.3	0.0
Other Former Soviet Union - 12								
2011/12	1.3	2.6	3.4	0.2	0.0	2.7	3.5	0.5
2012/13	1.2	2.8	3.3	0.1	0.0	2.7	3.5	0.4
2013/14	1.4	2.5	3.4	0.1	0.0	2.7	3.5	0.4
2014/15	1.4	2.6	3.5	0.2	0.0	2.8	3.6	0.4
Total Former Soviet Union - 12								
2011/12	14.3	2.3	32.2	0.7	6.7	19.0	26.3	2.7
2012/13	13.8	1.9	26.0	0.4	4.6	15.2	22.3	2.2
2013/14	14.5	2.0	29.2	0.3	5.7	16.2	23.5	2.5
2014/15	15.3	2.3	35.6	0.3	9.1	17.4	25.1	4.2

Former Soviet Union: Grain Supply and Demand (Corn)

Millions of Tons/Hectares

Country Mktg Year	Area Harvested	Yield	Production	MY Imports	MY Exports	Feed and Residual	Total Consumption	Ending Stocks
Former Soviet Union - 12								
Kazakhstan								
2011/12	0.1	5.0	0.5	0.0	0.0	0.4	0.5	0.0
2012/13	0.1	5.0	0.5	0.0	0.0	0.4	0.5	0.0
2013/14	0.1	5.3	0.6	0.0	0.0	0.5	0.6	0.0
2014/15	0.1	5.3	0.7	0.0	0.0	0.5	0.6	0.1
Russia								
2011/12	1.6	4.3	7.0	0.0	2.0	4.0	4.7	0.4
2012/13	1.9	4.2	8.2	0.1	1.9	5.6	6.4	0.3
2013/14	2.3	5.0	11.6	0.1	4.2	6.6	7.5	0.3
2014/15	2.6	4.4	11.5	0.1	2.5	8.0	9.0	0.3
Ukraine								
2011/12	3.5	6.4	22.8	0.0	15.2	6.5	7.8	1.1
2012/13	4.4	4.8	20.9	0.0	12.7	6.8	8.1	1.2
2013/14	4.8	6.4	30.9	0.1	20.0	8.5	9.9	2.2
2014/15	4.6	6.2	28.5	0.1	18.0	9.0	10.4	2.3
Uzbekistan								
2011/12	0.0	4.6	0.2	0.0	0.0	0.2	0.2	0.0
2012/13	0.0	3.4	0.1	0.0	0.0	0.1	0.1	0.0
2013/14	0.0	3.4	0.1	0.0	0.0	0.1	0.1	0.0
2014/15	0.0	3.4	0.1	0.0	0.0	0.1	0.1	0.0
Other Former Soviet Union - 12								
2011/12	0.9	4.0	3.7	0.2	0.3	2.9	3.3	1.0
2012/13	1.0	2.7	2.6	0.2	0.4	2.6	3.0	0.5
2013/14	1.0	3.8	3.7	0.3	0.4	3.0	3.4	0.7
2014/15	0.9	3.5	3.0	0.3	0.3	2.8	3.1	0.5
Total Former Soviet Union - 12								
2011/12	6.2	5.5	34.1	0.3	17.5	14.0	16.4	2.4
2012/13	7.4	4.4	32.3	0.3	15.0	15.5	18.1	2.0
2013/14	8.3	5.7	46.9	0.4	24.6	18.7	21.4	3.2
2014/15	8.2	5.3	43.8	0.4	20.8	20.4	23.3	3.3

Wheat Supply and Disappearance: Selected Exporters
Million Metric Tons/Hectares

Country Mktg Year	Area Harvested	Yield	Production	MY Imports	MY Exports	Feed and Residual	Total Consumption	Ending Stocks
Wheat Competitors								
Argentina								
2006/07	6.2	2.6	16.3	0.0	10.7	0.1	5.4	0.6
2007/08	6.6	2.8	18.6	0.0	11.2	0.1	5.7	2.4
2008/09	5.3	2.1	11.0	0.0	6.8	0.0	5.3	1.3
2009/10	4.0	3.0	12.0	0.0	5.1	0.0	5.8	2.3
2010/11	4.8	3.6	17.2	0.0	9.5	0.1	6.0	4.1
2011/12	5.2	3.0	15.5	0.0	12.9	0.1	6.0	0.7
2012/13	3.6	2.6	9.3	0.0	3.6	0.3	6.2	0.3
2013/14	3.5	3.0	10.5	0.0	2.2	0.1	6.1	2.6
2014/15	4.2	3.0	12.5	0.0	6.5	0.1	6.2	2.4
Australia								
2006/07	11.8	0.9	10.8	0.1	8.7	4.5	7.4	4.2
2007/08	12.6	1.1	13.6	0.1	7.5	3.5	6.6	3.7
2008/09	13.5	1.6	21.4	0.1	14.7	4.2	7.4	3.1
2009/10	13.9	1.6	21.8	0.1	14.8	1.9	5.2	5.1
2010/11	13.5	2.0	27.4	0.1	18.6	2.5	5.8	8.2
2011/12	13.9	2.2	29.9	0.1	24.7	3.2	6.5	7.1
2012/13	13.0	1.8	22.9	0.1	18.7	3.4	6.7	4.7
2013/14	13.5	2.0	27.0	0.2	18.6	3.6	7.0	6.2
2014/15	13.8	1.7	24.0	0.2	17.0	3.6	7.0	6.4
Canada								
2006/07	9.7	2.6	25.3	0.3	19.4	4.5	9.0	6.9
2007/08	8.6	2.3	20.1	0.4	16.1	2.2	6.9	4.4
2008/09	10.0	2.9	28.6	0.4	18.9	3.1	7.8	6.6
2009/10	9.7	2.8	27.0	0.4	19.0	2.5	7.2	7.7
2010/11	8.3	2.8	23.3	0.4	16.6	2.7	7.6	7.4
2011/12	8.6	3.0	25.3	0.5	17.4	4.7	9.9	5.9
2012/13	9.5	2.9	27.2	0.5	19.0	4.4	9.6	5.1
2013/14	10.4	3.6	37.5	0.4	23.2	4.9	10.1	9.7
2014/15	9.5	3.1	29.3	0.5	23.0	4.5	9.8	6.6
Total Wheat Competitors								
2006/07	27.7	1.9	52.4	0.4	38.9	9.1	21.7	11.6
2007/08	27.8	1.9	52.3	0.5	34.8	5.8	19.1	10.5
2008/09	28.8	2.1	61.0	0.5	40.4	7.3	20.6	11.0
2009/10	27.5	2.2	60.8	0.5	39.0	4.4	18.2	15.1

Wheat Supply and Disappearance: Selected Exporters (Continued)

Million Metric Tons/Hectares

Country Mktg Year	Area Harvested	Yield	Production	MY Imports	MY Exports	Feed and Residual	Total Consumption	Ending Stocks
2010/11	26.6	2.5	67.9	0.6	44.7	5.3	19.3	19.7
2011/12	27.6	2.6	70.7	0.6	54.9	8.0	22.3	13.7
2012/13	26.1	2.3	59.4	0.6	41.2	8.1	22.5	10.0
2013/14	27.5	2.7	75.0	0.6	44.1	8.6	23.1	18.5
2014/15	27.5	2.4	65.8	0.7	46.5	8.2	23.0	15.4
India								
2006/07	26.4	2.6	69.4	6.7	0.1	2.3	73.5	4.5
2007/08	28.0	2.7	75.8	2.0	0.0	2.5	76.4	5.8
2008/09	28.2	2.8	78.6	0.0	0.0	2.5	70.9	13.4
2009/10	27.8	2.9	80.7	0.2	0.1	2.8	78.2	16.1
2010/11	28.5	2.8	80.8	0.3	0.1	2.9	81.8	15.4
2011/12	29.1	3.0	86.9	0.0	0.9	3.1	81.4	20.0
2012/13	29.9	3.2	94.9	0.0	6.8	3.4	83.8	24.2
2013/14	30.0	3.1	93.5	0.0	5.9	4.8	94.0	17.8
2014/15	30.6	3.1	95.9	0.0	3.5	4.5	94.0	16.3
Turkey								
2006/07	8.6	2.0	17.5	1.7	2.4	0.8	16.7	2.0
2007/08	7.7	2.0	15.5	2.2	1.7	0.8	16.8	1.1
2008/09	7.7	2.2	16.8	3.5	2.2	0.7	16.9	2.2
2009/10	7.8	2.4	18.5	3.2	4.3	0.8	17.1	2.5
2010/11	8.0	2.1	17.0	3.7	3.0	0.8	17.3	2.9
2011/12	7.7	2.4	18.8	3.8	3.7	1.4	18.1	3.8
2012/13	7.8	2.1	16.0	3.6	3.4	0.9	17.7	2.3
2013/14	7.7	2.4	18.8	4.0	4.4	1.0	17.8	2.9
2014/15	7.7	2.0	15.3	5.5	3.8	0.7	17.5	2.3

Corn Supply and Disappearance: Selected Exporters
Million Metric Tons/Hectares

Country Mktg Year	Area Harvested	Yield	Production	MY Imports	MY Exports	Feed and Residual	Total Consumption	Ending Stocks
Argentina								
2006/07	2.8	8.0	22.5	0.0	15.4	4.8	6.7	1.7
2007/08	3.4	6.5	22.0	0.0	14.8	4.9	6.8	2.1
2008/09	2.5	6.2	15.5	0.0	10.3	4.5	6.4	0.9
2009/10	3.0	8.3	25.0	0.0	16.5	5.0	6.9	2.5
2010/11	3.8	6.7	25.2	0.0	16.3	5.3	7.3	4.0
2011/12	3.6	5.8	21.0	0.0	17.1	4.8	7.0	0.9
2012/13	4.0	6.8	27.0	0.0	18.7	5.3	7.9	1.3
2013/14	3.4	7.6	26.0	0.0	16.5	5.8	8.8	2.0
2014/15	3.0	7.7	23.0	0.0	13.5	6.1	9.4	2.1
Brazil								
2006/07	14.0	3.6	51.0	1.4	10.8	34.5	41.0	3.6
2007/08	14.7	4.0	58.6	0.7	7.8	36.0	42.5	12.6
2008/09	14.1	3.6	51.0	1.1	7.1	38.5	45.5	12.1
2009/10	12.9	4.3	56.1	0.4	11.6	40.0	47.0	10.0
2010/11	13.8	4.2	57.4	0.8	8.4	42.5	49.5	10.3
2011/12	15.2	4.8	73.0	0.8	24.3	43.0	50.5	9.2
2012/13	15.8	5.2	81.5	0.9	24.9	44.5	52.5	14.2
2013/14	15.8	5.0	79.5	0.8	21.5	46.0	55.0	18.0
2014/15	15.0	5.0	75.0	0.8	19.5	47.5	56.5	17.8
China								
2006/07	28.5	5.3	151.6	0.0	5.3	104.0	145.0	36.6
2007/08	29.5	5.2	152.3	0.0	0.5	106.0	150.0	38.4
2008/09	29.9	5.6	165.9	0.0	0.2	108.0	153.0	51.2
2009/10	31.2	5.3	164.0	1.3	0.2	118.0	165.0	51.3
2010/11	32.5	5.5	177.2	1.0	0.1	128.0	180.0	49.4
2011/12	33.5	5.7	192.8	5.2	0.1	131.0	188.0	59.3
2012/13	35.0	5.9	205.6	2.7	0.1	144.0	200.0	67.6
2013/14	36.3	6.0	218.5	3.3	0.0	154.0	212.0	77.3
2014/15	37.0	5.8	215.5	2.5	0.1	158.0	216.0	79.2
South Africa								
2006/07	2.9	2.5	7.3	1.1	0.5	4.4	8.6	1.7
2007/08	3.3	4.0	13.2	0.0	2.2	4.3	9.6	3.1
2008/09	2.9	4.3	12.6	0.0	1.7	4.3	9.9	4.1
2009/10	3.3	4.1	13.4	0.0	2.1	4.6	10.3	5.2
2010/11	2.9	3.8	10.9	0.4	2.4	5.0	10.7	3.4
2011/12	3.1	4.1	12.8	0.0	1.8	5.0	10.7	3.7

Corn Supply and Disappearance: Selected Exporters (Continued)

Million Metric Tons/Hectares

Country Mktg Year	Area Harvested	Yield	Production	MY Imports	MY Exports	Feed and Residual	Total Consumption	Ending Stocks
2012/13	3.2	3.8	12.4	0.1	2.1	5.1	11.0	3.1
2013/14	3.1	4.8	15.0	0.0	2.2	5.4	11.5	4.4
2014/15	3.2	4.2	13.5	0.0	2.5	5.5	11.8	3.6
Total Corn Competitors								
2006/07	48.2	4.8	232.4	2.6	31.9	147.7	201.3	43.5
2007/08	50.9	4.8	246.1	0.8	25.3	151.2	208.9	56.2
2008/09	49.4	5.0	245.0	1.2	19.3	155.3	214.8	68.3
2009/10	50.4	5.1	258.5	1.7	30.3	167.6	229.2	68.9
2010/11	52.9	5.1	270.8	2.2	27.3	180.8	247.5	67.2
2011/12	55.5	5.4	299.5	6.0	43.4	183.8	256.2	73.1
2012/13	58.1	5.6	326.5	3.7	45.8	198.9	271.4	86.1
2013/14	58.6	5.8	339.0	4.1	40.2	211.2	287.3	101.7
2014/15	58.2	5.6	327.0	3.3	35.6	217.1	293.7	102.7

Barley Supply and Disappearance: Selected Exporters
Million Metric Tons/Hectares

Country Mktg Year	Area Harvested	Yield	Production	MY Imports	MY Exports	Feed and Residual	Total Consumption	Ending Stocks
Australia								
2006/07	4.2	1.0	4.3	0.0	1.9	2.9	4.0	1.0
2007/08	4.9	1.5	7.2	0.0	3.4	2.1	3.1	1.7
2008/09	5.0	1.6	8.0	0.0	3.2	2.9	4.0	2.4
2009/10	4.4	1.8	7.9	0.0	3.9	3.3	4.5	1.9
2010/11	3.7	2.2	8.0	0.0	4.7	3.0	4.2	1.0
2011/12	3.7	2.2	8.2	0.0	5.4	2.1	3.3	0.5
2012/13	3.6	2.1	7.5	0.0	4.5	1.8	3.0	0.5
2013/14	3.9	2.4	9.5	0.0	6.2	2.0	3.3	0.6
2014/15	3.8	2.0	7.6	0.0	4.5	2.0	3.3	0.4
Canada								
2006/07	3.2	3.0	9.6	0.0	1.2	8.8	10.2	1.5
2007/08	4.0	2.8	10.9	0.1	3.0	6.4	7.8	1.6
2008/09	3.5	3.4	11.8	0.0	1.5	7.6	8.9	3.0
2009/10	2.9	3.3	9.5	0.0	1.3	7.5	8.7	2.5
2010/11	2.4	3.2	7.6	0.0	1.2	6.3	7.5	1.5
2011/12	2.4	3.3	7.9	0.0	1.3	5.7	6.9	1.2
2012/13	2.8	2.9	8.0	0.0	1.4	5.7	6.8	1.0
2013/14	2.7	3.9	10.2	0.0	1.6	6.6	7.7	1.9
2014/15	2.1	3.3	7.1	0.0	1.3	5.5	6.7	1.1
European Union								
2006/07	13.9	4.1	56.4	0.2	3.4	38.9	55.9	5.8
2007/08	13.9	4.2	57.8	0.3	3.8	38.9	54.5	5.7
2008/09	14.6	4.5	65.8	0.3	3.6	41.7	57.3	11.0
2009/10	14.0	4.5	62.4	0.1	1.1	41.7	56.8	15.6
2010/11	12.5	4.3	53.7	0.2	4.9	41.3	56.6	7.9
2011/12	11.9	4.3	51.9	0.5	3.0	35.8	51.2	6.1
2012/13	12.5	4.4	54.9	0.1	4.9	35.5	51.0	5.1
2013/14	12.4	4.8	59.6	0.0	5.7	38.0	53.5	5.5
2014/15	12.4	4.8	59.9	0.1	6.7	37.0	52.5	6.3

Sorghum Supply and Disappearance: Selected Exporters
Million Metric Tons/Hectares

Country Mktg Year	Area Harvested	Yield	Production	MY Imports	MY Exports	Feed and Residual	Total Consumption	Ending Stocks
Argentina								
2006/07	0.6	4.7	2.8	0.0	1.1	1.5	1.7	0.2
2007/08	0.6	4.7	2.9	0.0	1.2	1.0	1.2	0.7
2008/09	0.5	3.7	1.7	0.0	1.1	1.0	1.1	0.2
2009/10	0.8	4.8	3.6	0.0	1.8	1.7	1.9	0.2
2010/11	1.0	4.4	4.4	0.0	1.7	1.7	1.9	1.0
2011/12	1.0	4.2	4.2	0.0	3.1	1.7	1.9	0.2
2012/13	1.1	4.5	4.7	0.0	1.8	2.0	2.3	0.8
2013/14	1.0	4.4	4.4	0.0	1.2	2.3	2.7	1.3
2014/15	0.9	4.7	4.0	0.0	1.4	2.5	2.9	1.0
Australia								
2006/07	0.6	2.1	1.3	0.0	0.1	1.2	1.2	0.0
2007/08	0.9	4.0	3.8	0.0	0.8	2.2	2.2	0.8
2008/09	0.8	3.5	2.7	0.0	1.0	1.8	1.8	0.7
2009/10	0.5	3.0	1.5	0.0	0.3	1.2	1.2	0.7
2010/11	0.6	3.1	1.9	0.0	0.9	1.4	1.4	0.4
2011/12	0.7	3.4	2.2	0.0	1.3	1.1	1.1	0.2
2012/13	0.6	3.4	2.2	0.0	1.2	1.1	1.1	0.2
2013/14	0.5	2.2	1.1	0.0	0.4	0.8	0.8	0.1
2014/15	0.7	3.0	2.0	0.0	0.8	1.2	1.2	0.1

U.S. Grains Supply and Distribution: Wheat, Corn, Sorghum, Barley, Oats, Rye, and Rice

Thousand Metric Tons/Hectares

	Area Harvested	Yield	Rough Production	Production	Imports	TY Imports	Exports	TY Exports	Feed Dom. Consumption	Domestic Consumption	Ending Stocks
Wheat											
2012/13	19,732	3	nr	61,298	3,341	3,442	27,544	27,734	10,066	37,768	19,538
2013/14	18,345	3	nr	58,105	4,588	4,767	32,012	31,497	6,142	34,154	16,065
2014/15	18,770	3	nr	55,129	4,354	4,200	24,494	25,000	4,082	32,221	18,833
Corn											
2012/13	35,356	8	nr	273,192	4,063	4,265	18,545	18,262	109,603	262,973	20,859
2013/14	35,390	10	nr	351,272	909	727	48,703	50,707	127,915	293,045	31,292
2014/15	33,644	11	nr	361,091	635	650	44,452	44,500	133,356	302,147	46,419
Sorghum											
2012/13	2,021	3	nr	6,293	243	243	1,938	2,136	2,377	4,796	385
2013/14	2,665	4	nr	9,966	2	3	5,380	5,843	2,331	4,109	864
2014/15	2,590	4	nr	10,988	8	7	7,620	7,500	2,794	3,556	684
Barley											
2012/13	1,325	4	nr	4,768	507	431	193	163	1,441	4,638	1,750
2013/14	1,230	4	nr	4,719	408	522	311	336	1,409	4,775	1,791
2014/15	989	4	nr	3,849	544	500	218	250	980	4,285	1,681
Oats											
2012/13	407	2	nr	892	1,601	1,341	20	18	1,640	2,743	527
2013/14	408	2	nr	938	1,676	1,861	23	28	1,671	2,759	359
2014/15	416	2	nr	1,011	1,724	1,700	29	30	1,506	2,623	442
Rye											
2012/13	101	2	nr	166	228	221	8	7	148	387	10
2013/14	113	2	nr	194	234	204	7	6	184	424	7
2014/15	104	2	nr	183	229	200	7	5	160	402	10
Rice, Milled											
2012/13	1,084	8	9,069	6,348	669	675	3,385	3,293	nr	3,779	1,156
2013/14	999	9	8,615	6,117	733	754	2,985	3,042	nr	3,996	1,025
2014/15	1,181	8	10,026	7,068	730	670	3,294	3,400	nr	4,190	1,339

Notes: Wheat Trade Year (TY) statistics are on July/June years. Barley, corn, sorghum, rye and oats Trade Year (TY) statistics are on Oct/Sept years. Rice Trade Year (TY) statistics are for the subsequent calendar year; 'Imports' and 'Exports' columns contain data on the local marketing year: wheat, barley, oats and rye are June/May; corn and sorghum are Sept/Aug; rice is Aug/July.

Total Wheat and Coarse Grains: Supply and Demand

Millions of Metric Tons/Hectares

	Area Harvested	Yield	Production	TY Exports	Feed Dom.	Domestic Consumption	Ending Stocks
Wheat and Coarse Grains							
1985/86	570.5	2.3	1,328.5	165.2	614.5	1,247.9	420.6
1986/87	565.2	2.4	1,347.9	174.7	645.6	1,299.4	469.2
1987/88	544.3	2.4	1,285.9	202.2	656.5	1,329.8	423.1
1988/89	541.9	2.2	1,218.1	203.3	619.4	1,302.0	339.3
1989/90	548.2	2.4	1,327.4	208.9	644.4	1,346.2	320.5
1990/91	545.7	2.6	1,417.7	190.1	668.7	1,369.5	368.7
1991/92	543.3	2.5	1,355.7	207.5	651.4	1,364.9	359.5
1992/93	545.7	2.6	1,431.6	205.2	663.0	1,389.1	399.2
1993/94	535.9	2.5	1,356.1	188.2	655.7	1,389.3	366.1
1994/95	534.0	2.6	1,392.5	200.1	668.9	1,395.8	362.7
1995/96	527.1	2.5	1,338.5	187.5	640.1	1,381.9	319.4
1996/97	546.0	2.7	1,490.3	198.3	672.9	1,442.6	367.1
1997/98	535.2	2.8	1,491.6	190.3	683.1	1,444.0	414.6
1998/99	520.3	2.8	1,481.8	198.7	682.8	1,448.2	448.2
1999/00	506.2	2.9	1,465.3	214.0	688.3	1,468.0	445.0
2000/01	509.4	2.8	1,447.3	205.0	698.4	1,472.4	419.9
2001/02	511.8	2.9	1,481.0	208.4	711.3	1,496.1	404.9
2002/03	502.6	2.9	1,444.4	209.3	709.2	1,506.1	343.1
2003/04	510.8	2.9	1,472.4	206.0	715.6	1,535.7	279.8
2004/05	514.1	3.2	1,642.6	214.5	753.8	1,585.5	336.8
2005/06	516.4	3.1	1,599.9	222.6	755.0	1,616.3	320.5
2006/07	516.9	3.1	1,584.9	230.0	746.4	1,629.5	275.9
2007/08	533.8	3.2	1,692.5	244.9	759.4	1,673.9	294.4
2008/09	538.9	3.3	1,792.2	253.6	771.3	1,723.1	363.6
2009/10	533.1	3.4	1,804.2	254.2	778.4	1,767.5	400.3
2010/11	522.7	3.3	1,748.5	250.2	770.2	1,782.9	365.9
2011/12	538.2	3.4	1,851.5	287.2	803.6	1,852.0	365.4
2012/13	532.2	3.4	1,794.8	279.2	805.8	1,815.6	344.6
2013/14	544.3	3.7	1,996.0	326.4	866.6	1,942.5	398.1
2014/15	540.9	3.7	2,000.5	312.3	900.0	1,976.7	421.9

Notes: Wheat and coarse grains trade data are on July/June years through 1975/76. From 1976/77 to the present, coarse grains data are on an Oct/Sept trade year.

World Wheat and Coarse Grains: Supply and Demand

Millions of Metric Tons/Hectares

	Area Harvested	Yield	Production	TY Exports	Feed Dom.	Domestic Consumpti	Ending Stocks
Wheat							
1992/93	222.1	2.5	562.6	113.2	111.6	547.7	177.9
1993/94	221.0	2.5	558.5	101.7	109.6	553.0	183.4
1994/95	213.3	2.5	523.0	101.5	101.4	542.1	164.2
1995/96	216.7	2.5	537.5	99.2	95.2	546.1	155.7
1996/97	227.1	2.6	581.4	104.0	99.6	573.4	163.6
1997/98	226.4	2.7	610.2	104.5	103.6	576.4	197.5
1998/99	219.2	2.7	590.4	102.0	106.9	578.2	209.7
1999/00	212.5	2.8	586.8	111.9	102.7	585.2	211.3
2000/01	215.6	2.7	583.3	102.2	109.1	586.9	207.8
2001/02	214.5	2.7	583.8	108.0	109.7	586.3	205.2
2002/03	213.4	2.7	569.6	106.6	113.7	604.0	170.8
2003/04	207.6	2.7	555.3	103.6	99.6	589.3	136.8
2004/05	215.8	2.9	626.7	113.3	108.5	605.9	157.5
2005/06	217.6	2.8	618.9	114.2	115.5	621.7	154.7
2006/07	211.6	2.8	596.5	115.4	110.8	616.5	134.8
2007/08	217.1	2.8	612.7	116.2	102.5	617.7	129.7
2008/09	224.2	3.1	683.9	143.2	122.5	644.3	169.3
2009/10	225.5	3.0	686.8	135.4	121.0	654.2	201.9
2010/11	216.7	3.0	649.6	134.1	114.9	653.4	198.0
2011/12	220.7	3.2	695.8	153.8	146.6	697.0	196.8
2012/13	216.3	3.0	658.5	147.1	137.2	679.9	175.5
2013/14	220.9	3.2	716.1	162.1	130.5	704.2	187.5
2014/15	222.0	3.3	725.0	160.1	139.7	714.6	197.8
Coarse Grains							
1992/93	323.6	2.7	868.9	91.9	551.4	841.4	221.3
1993/94	314.9	2.5	797.7	86.5	546.1	836.3	182.7
1994/95	320.7	2.7	869.5	98.6	567.6	853.7	198.5
1995/96	310.3	2.6	801.0	88.3	544.9	835.8	163.7
1996/97	318.8	2.9	908.9	94.3	573.3	869.2	203.4
1997/98	308.8	2.9	881.3	85.8	579.5	867.7	217.1
1998/99	301.1	3.0	891.3	96.7	575.9	870.0	238.5
1999/00	293.7	3.0	878.5	102.1	585.5	882.8	233.6
2000/01	293.8	2.9	864.0	102.8	589.3	885.5	212.2
2001/02	297.4	3.0	897.2	100.4	601.6	909.7	199.6
2002/03	289.1	3.0	874.8	102.7	595.5	902.1	172.3
2003/04	303.1	3.0	917.1	102.3	616.0	946.4	143.0
2004/05	298.3	3.4	1,015.9	101.2	645.4	979.6	179.3
2005/06	298.7	3.3	981.1	108.4	639.5	994.6	165.8
2006/07	305.3	3.2	988.3	114.5	635.6	1,013.0	141.1
2007/08	316.7	3.4	1,079.8	128.7	656.9	1,056.2	164.7
2008/09	314.7	3.5	1,108.4	110.4	648.7	1,078.8	194.3
2009/10	307.6	3.6	1,117.4	118.8	657.4	1,113.3	198.4
2010/11	306.0	3.6	1,098.9	116.0	655.3	1,129.5	167.8
2011/12	317.5	3.6	1,155.7	133.4	657.0	1,155.0	168.6
2012/13	315.9	3.6	1,136.3	132.2	668.6	1,135.7	169.1
2013/14	323.4	4.0	1,279.9	164.2	736.1	1,238.4	210.6
2014/15	319.0	4.0	1,275.5	152.2	760.3	1,262.0	224.1

Notes: Wheat and coarse grains trade data are on July/June years through 1975/76. From 1976/77 to the present, coarse grains data are on an Oct/Sept trade year.

World Corn and Barley: Supply and Demand

Millions of Metric Tons/Hectares

	Area Harvested	Yield	Production	TY Exports	Feed Dom.	Domestic Consumption	Ending Stocks
Corn							
1992/93	133.1	4.0	535.6	62.6	348.7	512.1	162.7
1993/94	130.7	3.6	475.8	57.4	342.0	509.0	129.4
1994/95	135.2	4.1	559.3	71.9	371.6	535.4	153.3
1995/96	135.0	3.8	516.4	64.8	365.3	536.4	133.3
1996/97	141.5	4.2	592.8	66.6	387.9	559.8	166.3
1997/98	136.3	4.2	574.4	63.1	400.6	573.5	167.2
1998/99	138.9	4.4	605.8	68.7	404.3	581.6	191.4
1999/00	139.0	4.4	608.4	72.0	422.5	605.4	194.4
2000/01	137.1	4.3	591.8	75.9	427.4	610.9	175.3
2001/02	137.3	4.4	601.8	72.7	436.4	625.6	151.5
2002/03	137.4	4.4	603.9	76.8	433.4	628.6	126.8
2003/04	141.7	4.4	627.4	79.0	445.7	649.7	104.6
2004/05	145.4	4.9	716.8	76.0	475.8	690.3	131.1
2005/06	145.4	4.8	700.7	82.5	478.5	707.5	124.3
2006/07	150.3	4.8	716.6	91.3	479.3	730.3	110.6
2007/08	160.4	5.0	795.5	98.2	498.6	774.5	131.6
2008/09	158.7	5.0	799.7	83.6	480.9	783.9	147.4
2009/10	158.5	5.2	824.9	92.7	490.2	825.8	146.6
2010/11	164.6	5.1	835.4	91.7	501.9	852.0	130.0
2011/12	172.1	5.2	888.2	103.7	506.4	883.6	134.5
2012/13	177.6	4.9	868.0	100.5	517.7	864.5	138.1
2013/14	180.7	5.5	989.0	129.7	573.1	953.3	173.8
2014/15	178.3	5.6	991.3	116.9	595.5	975.5	189.6
Barley							
1992/93	72.6	2.3	166.3	16.4	119.0	165.6	35.0
1993/94	73.2	2.3	169.0	18.8	123.8	169.1	34.9
1994/95	72.2	2.2	160.7	15.3	120.9	165.6	30.0
1995/96	66.4	2.1	141.2	13.4	107.8	150.7	20.5
1996/97	64.3	2.4	153.2	17.9	106.3	149.5	24.1
1997/98	63.8	2.4	153.9	12.8	104.1	145.8	32.2
1998/99	56.6	2.4	136.0	17.8	99.5	139.3	29.0
1999/00	52.1	2.4	127.4	17.8	94.0	132.5	23.9
2000/01	52.9	2.5	133.0	16.3	94.6	134.3	22.6
2001/02	55.7	2.6	143.4	17.2	95.5	136.8	29.2
2002/03	54.8	2.4	134.2	16.3	94.7	135.8	27.5
2003/04	58.4	2.4	142.7	14.8	103.1	146.8	23.5
2004/05	57.5	2.6	152.1	17.0	100.0	142.5	33.1
2005/06	55.3	2.5	136.2	17.4	97.4	141.0	28.3
2006/07	56.4	2.4	137.0	14.6	98.5	143.8	21.5
2007/08	55.9	2.4	133.0	18.5	91.1	133.9	20.6
2008/09	55.2	2.8	155.0	18.2	100.4	144.0	31.6
2009/10	54.4	2.8	151.1	17.3	101.4	145.2	37.4
2010/11	47.2	2.6	123.1	15.2	91.3	136.2	24.3
2011/12	49.4	2.7	133.5	21.4	91.7	135.2	22.7
2012/13	50.2	2.6	129.8	22.1	89.0	131.7	20.8
2013/14	50.7	2.9	145.4	23.9	97.4	141.1	25.1
2014/15	49.8	2.8	140.2	22.3	95.3	141.3	24.0

Notes: Coarse grains trade data are on July/June years through 1975/76. From 1976/77 to the present, coarse grains data are on an Oct/Sept trade year.

World Rice: Supply and Demand

Millions of Metric Tons/Hectares

	Area Harvested	Yield	Rough Production	Production	TY Exports	Domestic Consumption	Ending Stocks
Rice, Milled							
1985/86	144.7	3.2	467.3	318.0	11.8	308.0	97.7
1986/87	144.8	3.2	464.6	316.1	12.9	310.4	103.3
1987/88	141.4	3.3	464.8	315.1	11.4	313.1	105.3
1988/89	146.6	3.3	490.8	332.1	14.0	325.7	111.7
1989/90	147.8	3.5	510.3	345.2	11.7	336.3	120.6
1990/91	147.0	3.5	519.4	351.4	12.3	345.3	126.7
1991/92	147.5	3.5	522.8	353.2	14.4	353.2	126.7
1992/93	146.5	3.6	524.2	354.0	14.9	357.5	123.2
1993/94	145.3	3.6	526.1	354.7	16.6	358.9	119.0
1994/95	147.3	3.7	539.9	364.1	20.8	365.5	117.6
1995/96	148.4	3.7	547.3	368.8	19.7	368.3	118.1
1996/97	150.1	3.8	565.3	381.4	18.9	379.2	120.3
1997/98	151.7	3.8	575.2	387.4	27.6	380.0	127.7
1998/99	153.1	3.8	587.0	394.9	24.8	388.6	134.0
1999/00	155.9	3.9	608.6	409.2	22.8	400.1	143.1
2000/01	152.4	3.9	594.1	399.3	24.3	395.6	146.7
2001/02	151.3	3.9	594.3	399.5	27.7	413.3	132.9
2002/03	146.9	3.8	563.1	378.2	27.6	408.1	103.0
2003/04	149.3	3.9	585.1	392.3	27.3	413.7	81.6
2004/05	151.8	3.9	596.6	400.9	29.0	408.6	73.9
2005/06	154.0	4.0	622.3	417.9	29.1	415.5	76.3
2006/07	154.6	4.0	625.6	420.5	31.9	421.6	75.2
2007/08	154.7	4.2	642.5	432.9	29.6	427.3	80.8
2008/09	158.1	4.2	668.3	449.1	29.4	437.6	92.4
2009/10	155.8	4.2	656.6	440.9	31.8	438.7	94.6
2010/11	158.2	4.2	671.4	450.0	36.6	445.0	99.6
2011/12	160.3	4.3	696.3	467.0	39.9	459.8	106.8
2012/13	158.2	4.4	703.8	472.0	39.4	468.6	110.2
2013/14	160.9	4.4	711.4	477.1	42.9	480.5	106.8
2014/15	160.2	4.4	707.5	474.6	42.2	483.1	98.2

Notes: Stocks, exports and consumption are expressed on a milled basis in marketing years.

ENDNOTES TO GRAIN: WORLD MARKETS AND TRADE

REGIONAL TABLES

North America: Canada, Mexico, the United States.

Central America: Belize, Costa Rica, El Salvador, Guatemala, Honduras, Nicaragua, Panama.

Caribbean: Anguilla, Antigua and Barbuda, Aruba, Bahamas, Barbados, Bermuda, British Virgin Islands, Cayman Islands, Cuba, Dominica, Dominican Republic, French West Indies, Grenada, Guadeloupe, Haiti, Jamaica and Dep, Leeward-Windward Islands, Martinique, Montserrat, Netherlands Antilles, Puerto Rico, Kitts and Nevis, St. Lucia, St. Vincent and the Grenadines, Trinidad and Tobago, Turks and Caicos Islands, Virgin Islands of the U.S.

South America: Argentina, Bolivia, Brazil, Chile, Colombia, Ecuador, Falkland Islands (Islas Malvinas), French Guiana, Guyana, Paraguay, Peru, Suriname, Uruguay, Venezuela.

EU: Austria, Belgium/Luxembourg, Bulgaria, Croatia, Cyprus, Czech Republic, Denmark, Estonia, Finland, France, Germany, Greece, Hungary, Ireland, Italy, Latvia, Lithuania, Malta, Netherlands, Poland, Portugal, Romania, Slovakia, Slovenia, Spain, Sweden, United Kingdom.

Other Europe: Albania, Azores, Bosnia and Herzegovina, Former Yugoslavia, Gibraltar, Iceland, Macedonia, Montenegro, Norway, Serbia, Switzerland.

Former Soviet Union: Armenia, Azerbaijan, Belarus, Georgia, Kazakhstan, Kyrgyzstan, Moldova, Russia, Tajikistan, Turkmenistan, Ukraine, Uzbekistan.

Middle East: Bahrain, Iran, Iraq, Israel, Jordan, Kuwait, Lebanon, Oman, Qatar, Saudi Arabia, Syria, Turkey, United Arab Emirates, Yemen.

North Africa: Algeria, Egypt, Libya, Morocco, Tunisia.

Sub-Saharan Africa: all African countries except North Africa.

East Asia: China, Hong Kong, Japan, South Korea, North Korea, Macau, Mongolia, Taiwan.

South Asia: Afghanistan, Bangladesh, Bhutan, India, Nepal, Pakistan, Sri Lanka, Maldives.

Southeast Asia: Brunei, Burma, Cambodia, Indonesia, Laos, Malaysia, Philippines, Singapore, Thailand, Vietnam.

Oceania: Australia, Fiji, New Zealand, Papua New Guinea.

OTHER NOTES

Local Marketing Years (LMY): LMY refers to the 12-month period at the onset of the main harvest, when the crop is marketed (i.e., consumed, traded, or stored). The year first listed begins a country's LMY for that commodity (2014/15 starts in 2014); except for summer grains in certain Southern Hemisphere countries and for rice in selected countries, where the second year begins the LMY (2014/15 starts in 2015). Key exporter LMY's are:

Wheat	Corn	Barley	Sorghum
Argentina (Dec/Nov)	Argentina (Mar/Feb)	Australia (Nov/Oct)	Argentina (Mar/Feb)
Australia (Oct/Sep)	Brazil (Mar/Feb)	Canada (Aug/Jul)	Australia (Mar/Feb)
Canada (Aug/Jul)	China (Oct/Sep)	European Union (Jul/Jun)	United States (Sep/Aug)
China (Jul/Jun)	South Africa (May/Apr)	Russia (Jul/Jun)	
European Union (Jul/Jun)	United States (Sep/Aug)	Ukraine (Jul/Jun)	
India (Apr/Mar)		United States (Jun/May)	
Kazakhstan (Jul/Jun)			
Russia (Jul/Jun)			
Turkey (Jun/May)			
Ukraine (Jul/Jun)			
United States (Jun/May)			

For a complete list of local marketing years, please see the FAS website (<http://www.fas.usda.gov/psdonline/psdAvailability.aspx>).

Stocks: Unless otherwise stated, stock data are based on an aggregate of differing local marketing years and should not be construed as representing world stock levels at a fixed point in time.

Consumption: World totals for consumption reflect total utilization, including food, seed, industrial, feed, and waste; as well as differences in local marketing year imports and local marketing year exports. Consumption statistics for regions and individual countries, however, reflect food, seed, industrial, feed, and waste only.

Trade: All PSD tables are balanced on the different local marketing years. All trade tables contain Trade Year (TY) data which puts all countries on a uniform, 12-month period for analytical comparisons: wheat is July/June; coarse grains, corn, barley, sorghum, oats, and rye are Oct/Sept; and rice is calendar year.

EU Consolidation: The trade figures starting from 1999/00 represent the European Union (Croatia plus the former EU-27) and exclude all intra-trade. For the years 1960/61 through 1998/99, figures are the EU-15 and also exclude all intra-trade. EU-15 member states' data for grains are no longer maintained in the official USDA database. Data for the individual NMS-10, plus Bulgaria, Romania, and Croatia, exists only prior to 1999/00.

Statistics: (1) Wheat trade statistics include wheat, flour, and selected pasta products on a grain equivalent basis. (2) Rice trade statistics include rough, brown, milled, and broken on a milled equivalent basis. (3) Coarse grains statistics include corn, barley, sorghum, oats, rye, millet, and mixed grains but exclude trade in barley malt, millet, and mixed grains.

Unaccounted: This term includes grain in transit, reporting discrepancies in some countries, and trade to countries outside the USDA database.

The Global Commodity Analysis Division, Office of Global Analysis, Foreign Agricultural Service, USDA, Washington, DC 20250, prepared this circular. Information is gathered from official statistics of foreign governments and other foreign source materials, reports of U.S. agricultural attachés and Foreign Service officers, office research, and related information. Further information may be obtained by writing the Division or telephoning (202) 720-3448.

Note: The previous report in this series was Grain: World Markets and Trade January 2015. For further details on world grain production, please see World Agricultural Production February 2015.

This circular is available in its entirety on the Internet via the Foreign Agricultural Service Home Page. The address is: <http://www.fas.usda.gov>

Questions may be directed to the following staff:

Teresa McKeivier	(202) 690-1151	Teresa.McKeivier@fas.usda.gov	Wheat
Andrew Sowell	(202) 720-0262	Andrew.Sowell@fas.usda.gov	Wheat
Yoonhee Macke	(202) 690-4199	Yoonhee.Macke@fas.usda.gov	Rice
Rick O'Meara	(202) 720-4933	Richard.Omeara@fas.usda.gov	Coarse Grains
Lisa Bennett	(202) 720-0929	Lisa.Bennett@fas.usda.gov	Coarse Grains