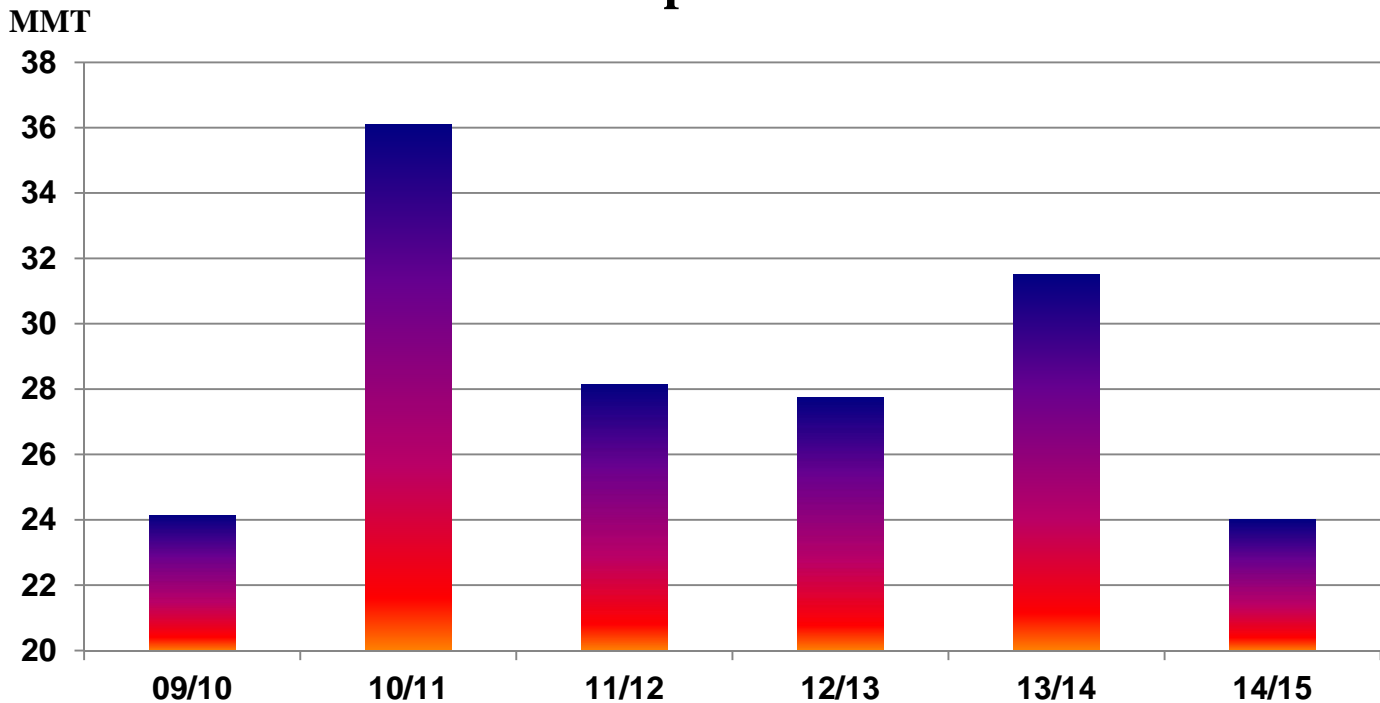




Grain: World Markets and Trade

U.S. Wheat Exports Under Pressure



U.S. wheat exports in 2014/15 are forecast down 24 percent from last year and are expected to be the lowest in 12 years. The United States had traditionally been the largest wheat exporter but lost that position to the EU last year. EU exports are forecast at a record high again in 2014/15, continuing to displace the United States as the largest exporter. The EU has abundant supplies, freight and logistical advantages to North Africa and the Middle East, and competitive prices. France has an unusually large supply of feed-quality wheat, which is being exported to Southeast Asian markets.

Further exacerbating the U.S. decline, Canada's exports are forecast to equal U.S. exports for the first time ever at 24 million tons. Canada's exports are the largest in over 20 years, with this year's increase primarily driven by large shipments of durum, which remain in tight supply globally.

Favorable growing conditions in the EU, combined with large carry-in, imply another year of exportable surplus. However, policy uncertainty in Argentina and Russia could create future export opportunities for the United States. On May 12, USDA will release its first global, country-level forecasts for 2015/16.

TABLE OF CONTENTS

World Markets and Trade: Commentary and Current Data	
Wheat	4
Rice	9
Coarse Grains.....	14
Historical Data Series for Selected Regions and Countries	34
Endnotes to Grain: World Markets and Trade	53

The Foreign Agricultural Service (FAS) updates its production, supply and distribution (PSD) database for cotton, oilseeds, and grains at 12:00 p.m. on the day the *World Agricultural Supply and Demand Estimates* (WASDE) report is released. This circular is released by 12:15 p.m.

To download the tables in the publication, go to Production, Supply and Distribution Database (PSD Online): (<http://apps.fas.usda.gov/psdonline/psdHome.aspx>), scroll down to Reports, and Click the plus sign [+] next to Grains.

FAS Reports and Databases:

Current *World Markets and Trade* and *World Agricultural Production* Reports:

<http://apps.fas.usda.gov/psdonline/psdDataPublications.aspx>

Archives *World Markets and Trade* and *World Agricultural Production* Reports:

<http://usda.mannlib.cornell.edu/MannUsda/viewTaxonomy.do?taxonomyID=7>

Production, Supply and Distribution Database (PSD Online):

<http://apps.fas.usda.gov/psdonline/psdHome.aspx>

Global Agricultural Trade System (U.S. Exports and Imports):

<http://apps.fas.usda.gov/gats/default.aspx>

Export Sales Report:

<http://apps.fas.usda.gov/esrquery/>

Global Agricultural Information Network (Agricultural Attaché Reports):

<http://gain.fas.usda.gov/Pages/Default.aspx>

Other USDA Reports:

World Agricultural Supply and Demand Estimates (WASDE):

<http://www.usda.gov/oce/commodity/wasde/>

Economic Research Service:

<http://www.ers.usda.gov/topics/crops>

National Agricultural Statistics Service:

<http://www.nass.usda.gov/Publications/>

All Grain Summary Comparison

Marketing Year	Wheat			Rice, Milled			Corn			
	2012/13	2013/14	2014/15	2012/13	2013/14	2014/15	2012/13	2013/14	2014/15	
Production										
United States	(Jun-May)	61.3	58.1	55.1	6.3	6.1	7.1	273.2	351.3	361.1
Other		597.4	658.7	671.4	465.6	470.8	467.5	594.8	637.4	630.8
World Total		658.7	716.8	726.5	471.9	476.9	474.6	868.0	988.7	991.9
Domestic Consumption										
United States	(Jun-May)	37.8	34.2	32.6	3.8	4.0	4.1	263.0	293.0	300.9
Other		650.1	663.7	680.2	461.9	473.2	476.7	606.0	651.8	670.3
World Total		687.9	697.9	712.8	465.7	477.2	480.8	869.0	944.8	971.2
Ending Stocks										
United States	(Jun-May)	19.5	16.1	18.6	1.2	1.0	1.4	20.9	31.3	46.4
Other		156.1	170.5	178.6	109.0	106.0	97.2	114.5	139.5	142.1
World Total		175.6	186.6	197.2	110.2	107.0	98.6	135.4	170.8	188.5
TY Imports										
United States	(Jun-May)	3.4	4.8	4.1	0.7	0.8	0.7	4.3	0.7	0.7
Other		141.3	155.0	154.3	35.9	40.0	39.6	94.5	122.6	114.0
World Total		144.7	159.8	158.4	36.6	40.8	40.3	98.8	123.3	114.7
TY Exports										
United States	(Jun-May)	27.7	31.5	24.0	3.3	3.0	3.5	18.3	50.7	45.5
Other		119.4	130.7	136.9	36.2	40.1	38.8	82.2	79.0	74.5
World Total		147.1	162.2	160.9	39.5	43.1	42.3	100.5	129.7	120.0

Note: Consumption in this table has not been adjusted for differences in marketing year imports and exports and therefore differs from global totals shown elsewhere.

Marketing years for U.S. grains are: Wheat (Jun-May), Rice (Aug-Jul), Corn (Sep-Aug).
'Marketing Year' column is germane for U.S. wheat only.

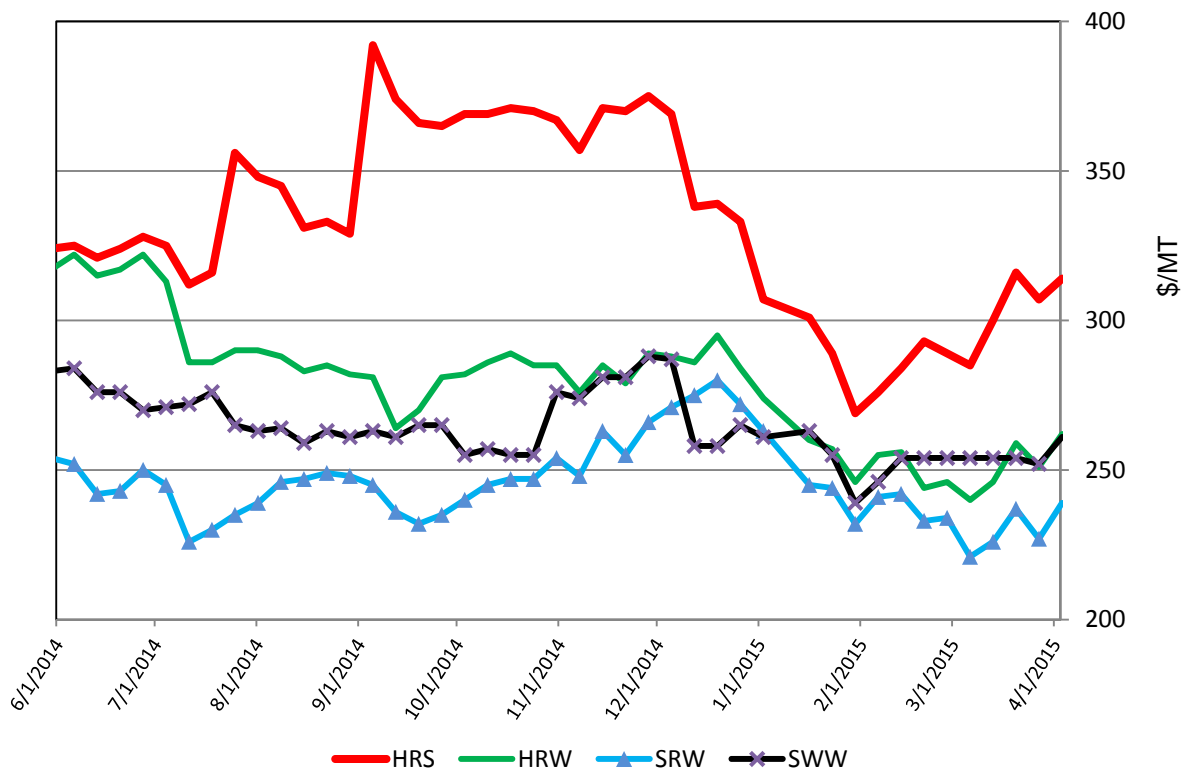
WHEAT: WORLD MARKETS AND TRADE

OVERVIEW

Global production for 2014/15 is raised to a new record driven by increases in both the EU and Pakistan. Global trade is up slightly but short of last year's record. Exporter changes are partly offsetting as Canada, the EU, and Russia are raised this month while Argentina, India, and the United States are cut. The U.S. season-average farm price is raised slightly.

U.S. PRICES:

U.S. Weekly FOB Export Bids



Domestic: Export prices for all wheat classes were up in March. Hard Red Spring (HRS) prices jumped \$25 to \$314/ton. Hard Red Winter (HRW) rose \$16 to \$262/ton over concerns about adverse weather in parts of Nebraska, Kansas, Oklahoma, and Texas. Soft Red Winter (SRW) and Soft White Winter (SWW) edged up \$5 to \$239/ton and \$7 to \$261/ton, respectively.

TRADE CHANGES IN 2014/15

Selected Exporters

- **Argentina** is cut 500,000 tons to 5.0 million as the government is slow to issue export licenses.
- **Canada** is raised 500,000 tons to 24.0 million on continued strong sales and shipments. Large durum exports this year support the near record export projection.
- **EU** is boosted 2.0 million tons to a record, 33.5 million on a recent spike in sales as indicated by a surge in export licenses.
- **India** is cut 500,000 tons to 1.7 million on slow shipments and lack of competitiveness.
- **Russia** is raised 500,000 tons to 20.5 million on the pace to date, and expectations of continued small shipments to nearby markets.
- **United States** is cut 1.0 million tons to 24.0 million on slowing shipments and sales.

Selected Importers

- Several **Sub-Saharan African** countries have been added to the PSD database this month starting in 2010/11. **Benin, Malawi, Mali, Namibia, Rwanda,** and **Uganda** account for 1.3 million tons of imports in 2014/15.
- **Turkey** is raised 300,000 tons to 5.6 million on the fast pace of shipments so far.
- **United States** is lowered 100,000 tons to 4.1 million on slower-than-expected durum imports.

World Wheat, Flour, and Products Trade
July/June Year, Thousand Metric Tons

	2010/11	2011/12	2012/13	2013/14	2014/15 Mar	2014/15 Apr
TY Exports						
Argentina	7,742	11,951	7,450	1,601	5,500	5,000
Australia	18,455	23,031	21,269	18,339	17,500	17,500
Brazil	2,539	1,860	1,753	81	1,500	1,600
Canada	16,768	17,603	18,584	22,157	23,500	24,000
European Union	23,086	16,728	22,677	32,033	31,500	33,500
India	73	1,723	8,651	5,354	2,200	1,700
Kazakhstan	5,519	11,069	6,801	8,000	6,000	6,000
Russia	3,983	21,627	11,289	18,534	20,000	20,500
Turkey	2,944	3,678	3,583	4,294	3,800	3,800
Ukraine	4,302	5,436	7,190	9,755	11,000	11,000
Others	12,633	10,968	10,112	10,597	12,575	12,275
Subtotal	98,044	125,674	119,359	130,745	135,075	136,875
United States	36,098	28,144	27,734	31,497	25,000	24,000
World Total	134,142	153,818	147,093	162,242	160,075	160,875
TY Imports						
Afghanistan	2,000	2,200	1,600	2,050	2,000	2,000
Algeria	6,516	6,500	6,484	7,484	7,100	7,100
Azerbaijan	1,287	1,443	1,292	1,415	1,600	1,700
Bangladesh	3,951	2,039	2,725	3,354	3,300	3,300
Brazil	6,742	7,053	7,547	7,061	6,700	6,700
Egypt	10,600	11,650	8,300	10,170	10,500	10,700
European Union	4,621	7,362	5,277	3,974	5,500	5,500
Indonesia	6,606	6,457	7,146	7,392	7,700	7,700
Iran	200	2,400	5,600	6,600	6,500	6,500
Iraq	3,631	3,784	3,948	3,246	3,000	2,800
Japan	5,869	6,354	6,598	6,123	5,900	5,800
Korea, South	4,761	5,188	5,439	4,288	3,800	3,800
Mexico	3,404	5,020	3,826	4,636	4,600	4,600
Morocco	4,019	3,671	3,825	3,892	3,400	3,400
Nigeria	4,052	3,931	4,140	4,550	4,750	4,750
Philippines	3,224	4,075	3,645	3,482	4,100	4,100
Saudi Arabia	1,739	2,904	1,921	3,429	3,550	3,550
Sudan	1,595	2,360	1,793	2,664	2,600	2,600
Thailand	1,943	2,646	1,845	1,693	2,300	2,500
Turkey	3,545	4,413	3,312	4,154	5,300	5,600
United Arab Emirates	1,311	1,996	1,676	1,627	1,750	1,750
Uzbekistan	1,618	2,698	1,863	2,224	2,100	2,100
Venezuela	1,469	1,686	1,617	1,951	1,800	1,800
Vietnam	2,459	2,711	1,671	2,158	2,300	2,300
Yemen	2,816	2,685	3,149	3,425	3,300	3,300
Others	38,450	45,672	44,978	52,035	47,075	48,395
Subtotal	128,428	148,898	141,217	155,077	152,525	154,345
Unaccounted	3,116	1,896	2,434	2,398	3,350	2,430
United States	2,598	3,024	3,442	4,767	4,200	4,100
World Total	134,142	153,818	147,093	162,242	160,075	160,875

TY=Trade Year, see Endnotes.

World Wheat Production, Consumption, and Stocks
Local Marketing Years, Thousand Metric Tons

	2010/11	2011/12	2012/13	2013/14	2014/15 Mar	2014/15 Apr
Production						
Argentina	17,200	15,500	9,300	10,500	12,500	12,500
Australia	27,410	29,905	22,856	26,929	24,000	24,000
Brazil	5,900	5,800	4,380	5,300	5,900	5,900
Canada	23,300	25,288	27,205	37,530	29,300	29,300
China	115,180	117,400	121,023	121,930	126,000	126,000
Egypt	7,200	8,400	8,500	8,250	8,200	8,300
European Union	136,667	138,182	133,949	144,328	155,685	156,448
India	80,800	86,870	94,880	93,510	95,850	95,850
Iran	13,500	12,400	13,800	14,500	13,000	13,000
Kazakhstan	9,638	22,732	9,841	13,941	12,996	12,996
Pakistan	23,900	25,000	23,300	24,000	25,000	25,500
Russia	41,508	56,240	37,720	52,091	59,000	59,080
Turkey	17,000	18,800	16,000	18,750	15,250	15,250
Ukraine	16,844	22,324	15,761	22,278	24,750	24,750
Uzbekistan	6,500	6,300	6,700	6,800	7,150	7,150
Others	48,294	50,565	52,202	58,081	55,049	55,299
Subtotal	590,841	641,706	597,417	658,718	669,630	671,323
United States	58,868	54,244	61,298	58,105	55,129	55,129
World Total	649,709	695,950	658,715	716,823	724,759	726,452
Total Consumption						
Algeria	8,750	8,950	9,450	9,850	10,050	10,050
Brazil	10,800	11,200	10,900	11,400	11,600	11,800
Canada	7,551	9,852	9,598	10,138	9,830	10,330
China	110,500	122,500	125,000	121,500	124,000	124,000
Egypt	17,700	18,600	18,700	18,500	18,400	18,900
European Union	122,844	127,234	119,250	117,100	124,500	123,100
India	81,760	81,404	83,822	93,852	93,725	93,725
Indonesia	6,035	6,250	6,950	7,265	7,465	7,565
Iran	15,700	14,900	16,400	18,000	18,900	18,900
Morocco	7,850	8,800	8,300	9,000	9,000	9,000
Pakistan	23,000	23,100	23,900	24,100	25,100	24,500
Russia	38,600	38,000	33,550	34,100	35,500	35,500
Turkey	17,300	18,100	17,650	17,750	17,500	17,500
Ukraine	11,600	14,950	11,400	11,500	12,000	12,000
Uzbekistan	7,700	7,800	8,000	8,400	8,900	8,900
Others	135,854	145,346	147,251	151,273	152,723	154,419
Subtotal	624,138	665,193	642,195	671,689	682,283	683,253
United States	29,424	31,962	37,768	34,154	32,250	32,564
World Total	653,562	697,155	679,963	705,843	714,533	715,817
Ending Stocks						
Australia	8,184	7,051	4,654	6,162	5,812	6,112
Canada	7,360	5,932	5,052	9,652	6,602	5,602
China	59,091	55,946	53,960	60,274	62,774	62,774
European Union	11,934	13,516	10,815	9,984	15,820	15,332
India	15,360	19,950	24,200	17,830	16,500	16,500
Russia	13,736	10,899	4,952	5,209	9,059	8,639
Ukraine	3,341	5,363	2,579	3,670	5,470	5,470
Others	55,553	57,973	49,843	57,727	56,873	58,153
Subtotal	174,559	176,630	156,055	170,508	178,910	178,582
United States	23,487	20,211	19,538	16,065	18,804	18,626
World Total	198,046	196,841	175,593	186,573	197,714	197,208

Regional Wheat Imports, Production, Consumption, and Stocks

Thousand Metric Tons

	2010/11	2011/12	2012/13	2013/14	Mar 2014/15	Apr 2014/15
TY Imports						
North America	6,431	8,541	7,753	9,844	9,280	9,180
Central America	1,684	1,666	1,662	1,833	1,820	1,820
South America	13,158	13,779	14,392	14,806	13,945	13,945
European Union - 28	4,621	7,362	5,277	3,974	5,500	5,500
Other Europe	1,614	1,913	1,633	1,840	1,940	1,940
Former Soviet Union - 12	5,498	8,022	7,228	7,389	7,510	7,610
Middle East	17,324	23,065	24,175	28,304	29,755	29,905
North Africa	24,427	24,855	22,052	25,240	24,150	24,350
Sub-Saharan Africa	15,622	19,218	18,503	20,305	20,050	21,190
East Asia	13,889	16,865	17,352	19,463	13,535	13,435
South Asia	7,593	5,489	5,312	6,728	7,415	7,495
Southeast Asia	16,341	18,016	16,356	17,109	18,750	18,950
Others	2,824	3,131	2,964	3,009	3,075	3,125
Total	131,026	151,922	144,659	159,844	156,725	158,445
Production						
North America	85,844	83,160	91,734	99,012	88,089	88,100
South America	27,560	25,766	18,404	19,981	23,750	23,745
European Union - 28	136,667	138,182	133,949	144,328	155,685	156,448
Other Europe	3,188	3,597	3,504	4,169	3,854	3,854
Former Soviet Union - 12	81,027	114,985	77,802	103,873	112,646	112,726
Middle East	38,638	39,282	36,880	41,708	35,165	35,165
North Africa	15,914	18,366	17,320	19,722	16,800	16,900
Sub-Saharan Africa	5,529	6,231	6,718	7,518	7,473	7,717
East Asia	116,355	118,775	122,483	123,244	127,461	127,461
South Asia	110,949	117,132	126,390	125,710	129,145	129,645
Oceania	27,855	30,288	23,345	27,377	24,510	24,510
Others	183	186	186	181	181	181
Total	649,709	695,950	658,715	716,823	724,759	726,452
Domestic Consumption						
North America	43,425	49,414	53,991	50,942	48,830	49,644
South America	25,598	26,121	26,433	27,277	27,675	28,200
European Union - 28	122,844	127,234	119,250	117,100	124,500	123,100
Other Europe	4,723	4,871	4,696	4,837	4,955	4,955
Former Soviet Union - 12	75,710	79,980	71,725	73,075	75,885	75,885
Middle East	54,406	56,273	56,813	59,857	60,150	60,200
North Africa	38,805	40,927	41,421	42,424	42,250	42,750
Sub-Saharan Africa	21,326	23,384	24,311	26,691	26,348	27,979
East Asia	123,952	137,057	140,083	135,324	137,075	136,815
South Asia	117,003	115,834	121,167	131,946	133,425	132,825
Southeast Asia	14,977	16,665	16,535	16,619	17,830	18,130
Oceania	6,845	7,819	8,106	8,275	8,860	8,560
Others	3,354	3,369	3,358	3,515	3,660	3,710
Total	652,968	688,948	687,889	697,882	711,443	712,753
Ending Stocks						
North America	31,164	26,718	24,868	26,036	25,735	24,568
South America	8,574	3,991	3,464	6,825	6,709	6,910
European Union - 28	11,934	13,516	10,815	9,984	15,820	15,332
Other Europe	1,182	1,327	1,046	946	1,055	915
Former Soviet Union - 12	22,719	26,006	13,936	15,019	21,635	21,315
Middle East	12,774	11,686	13,114	16,329	16,469	16,569
North Africa	12,194	14,094	11,441	13,516	11,630	11,466
Sub-Saharan Africa	1,330	2,312	2,056	2,298	2,235	2,191
East Asia	62,143	59,235	57,502	63,477	65,839	66,043
South Asia	21,079	25,448	28,173	21,742	20,440	21,552
Southeast Asia	3,991	4,703	3,854	3,558	3,713	3,613
Oceania	8,580	7,415	4,957	6,455	6,075	6,375
Others	382	390	367	388	359	359
Total	198,046	196,841	175,593	186,573	197,714	197,208

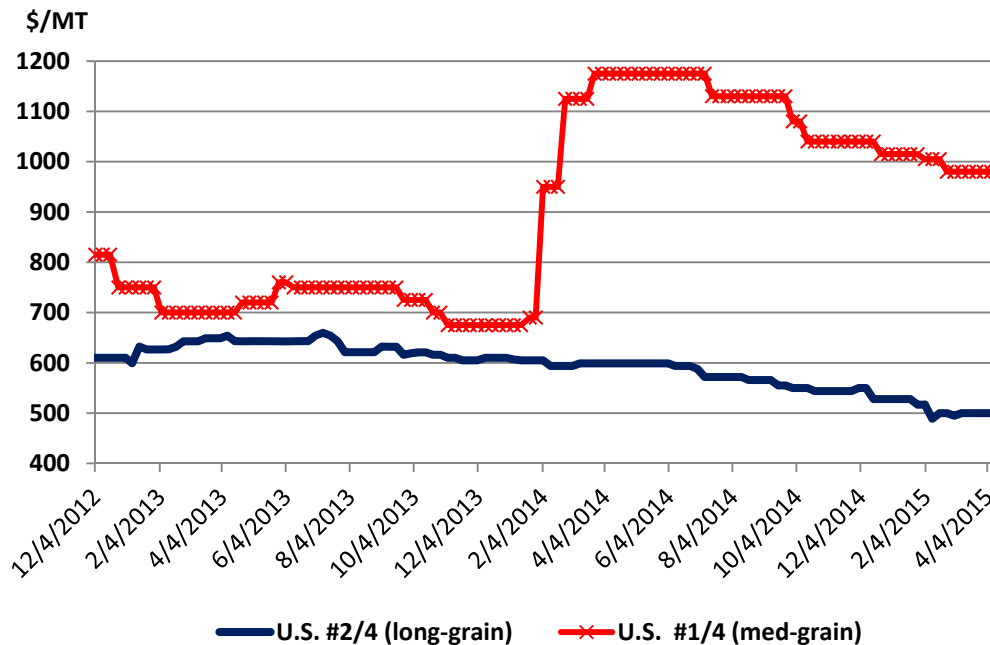
NOTES: Regional definitions appear on last page of this circular. Imports are reported on a trade year basis. All other data are reported using local marketing years.

RICE: WORLD MARKETS AND TRADE

OVERVIEW

Global production is nearly unchanged from last month as reductions for many Sub-Saharan Africa countries, Indonesia, and Vietnam largely offset gains for Pakistan and Mali. Global trade is slightly reduced driven by smaller exports from Egypt and Japan. Global consumption is lowered, but still outpaces production and is the highest on record. Stocks are forecast higher. U.S. exports are raised on increased sales to markets in Western Hemisphere.

U.S. Medium-Grain Quotes Decline but Still Strong



Export quotes for U.S. medium-grain rice have declined in recent months largely due to weak foreign buying. Sales and shipments, particularly to Turkey and Jordan, have been slower than last year. Nevertheless, quotes remain high relative to 2013 staying just under \$1,000 per ton. This could be due to concerns over potentially tight supplies in California, where a prolonged drought is constraining water availability. Last week's NASS *Prospective Plantings* survey indicated that medium-grain rice area in California will drop 5 percent from a year ago to the lowest acreage since 1992. In 2014, California produced a little over 60 percent of the U.S. medium-grain rice crop, below its 10-year average of more than 75 percent.

SELECTED TRADE CHANGES

- **Pakistan's** exports in 2014 are down 100,000 tons to 3.3 million on competition from India.

-
- **Japan's** exports in 2014 are revised down 137,000 tons to 63,000 on food aid shipment data. Revisions are made from 2001/02 onwards. For 2015, exports are cut 125,000 tons to 75,000 to be more in line with previous year.
 - **Egypt's** exports for 2015 are halved to 250,000 tons reflecting restrictive measures on exports.

World Rice Trade
January/December Year, Thousand Metric Tons

	2010/11	2011/12	2012/13	2013/14	2014/15 Mar	2014/15 Apr
TY Exports						
Argentina	732	608	526	494	580	580
Australia	311	449	460	404	400	400
Brazil	1,296	1,105	830	850	800	800
Burma	1,075	1,357	1,163	1,663	1,600	1,600
Cambodia	860	900	1,075	1,000	1,200	1,200
China	487	267	447	393	400	400
Egypt	320	600	700	600	500	250
European Union	237	194	203	284	220	220
Guyana	260	265	346	500	500	500
India	4,637	10,250	10,480	10,901	9,000	9,000
Pakistan	3,414	3,399	4,126	3,300	3,900	3,900
Paraguay	208	262	365	350	400	400
Thailand	10,647	6,945	6,722	10,969	11,000	11,000
Uruguay	841	1,056	939	957	950	950
Vietnam	7,000	7,717	6,700	6,325	6,700	6,700
Others	906	1,276	1,080	1,025	1,067	976
Subtotal	33,231	36,650	36,162	40,015	39,217	38,876
United States	3,246	3,298	3,293	3,042	3,400	3,450
World Total	36,477	39,948	39,455	43,057	42,617	42,326
TY Imports						
Angola	275	360	430	496	450	450
Bangladesh	1,486	53	114	700	600	600
Brazil	591	732	712	586	700	700
Cameroon	310	450	550	610	525	525
China	575	2,900	3,483	4,168	4,500	4,500
Cote d'Ivoire	935	1,375	940	1,200	1,200	1,200
Cuba	558	330	413	377	450	450
European Union	1,496	1,313	1,375	1,556	1,500	1,550
Ghana	620	595	725	590	620	620
Indonesia	3,098	1,960	650	1,225	1,300	1,250
Iran	1,870	1,500	2,220	1,650	1,700	1,700
Iraq	1,036	1,478	1,294	1,080	1,250	1,250
Japan	742	650	690	669	700	700
Kenya	335	400	410	440	480	480
Korea, South	532	238	580	379	450	450
Malaysia	1,076	1,006	885	989	1,000	1,000
Mexico	705	680	746	658	775	775
Mozambique	360	445	500	500	520	480
Nigeria	2,550	3,400	2,400	3,200	3,500	3,500
Philippines	1,200	1,500	1,000	1,800	1,700	1,700
Saudi Arabia	1,059	1,193	1,326	1,410	1,500	1,460
Senegal	805	1,200	1,075	1,250	1,200	1,200
South Africa	885	870	990	910	1,100	1,100
United Arab Emirates	420	430	440	450	460	460
Venezuela	300	375	500	480	500	500
Others	9,588	11,151	11,491	12,645	11,048	10,973
Subtotal	33,407	36,584	35,939	40,018	39,728	39,573
Unaccounted	2,449	2,724	2,841	2,285	2,219	2,053
United States	621	640	675	754	670	700
World Total	36,477	39,948	39,455	43,057	42,617	42,326

TY=Trade Year, see Endnotes.

Note about dates: 2014/15 is calendar year 2015, 2013/14 is calendar year 2014, and so on.

World Rice Production, Consumption, and Stocks
Local Marketing Years, Thousand Metric Tons

	2010/11	2011/12	2012/13	2013/14	2014/15 Mar	2014/15 Apr
Milled Production						
Bangladesh	31,700	33,700	33,820	34,390	34,600	34,600
Brazil	9,300	7,888	8,037	8,300	8,300	8,300
Burma	11,060	11,473	11,715	11,957	12,150	12,150
Cambodia	4,233	4,268	4,670	4,725	4,700	4,700
China	137,000	140,700	143,000	142,530	144,500	144,500
Egypt	3,100	4,250	4,675	4,750	4,500	4,530
India	95,980	105,310	105,240	106,540	102,500	102,500
Indonesia	35,500	36,500	36,550	36,300	36,500	36,300
Japan	7,720	7,646	7,756	7,832	7,679	7,679
Korea, South	4,295	4,224	4,006	4,230	4,241	4,241
Nepal	2,680	2,970	3,000	3,361	3,100	3,100
Pakistan	5,000	6,200	5,800	6,700	6,500	6,900
Philippines	10,539	10,710	11,428	11,858	12,200	12,200
Thailand	20,262	20,460	20,200	20,460	19,150	19,150
Vietnam	26,371	27,152	27,537	28,161	28,250	28,050
Others	37,627	37,668	38,159	38,669	38,918	38,628
Subtotal	442,367	461,119	465,593	470,763	467,788	467,528
United States	7,593	5,866	6,348	6,117	7,068	7,068
World Total	449,960	466,985	471,941	476,880	474,856	474,596
Consumption and Residual						
Bangladesh	32,400	34,300	34,500	34,900	35,300	35,300
Brazil	8,200	7,928	7,850	7,900	7,900	7,900
Burma	10,100	10,200	10,400	10,450	10,600	10,600
Cambodia	3,370	3,400	3,550	3,650	3,700	3,700
China	135,000	139,600	144,000	146,300	148,400	148,400
Egypt	3,300	3,620	4,050	4,000	4,000	4,000
India	90,206	93,334	94,031	99,180	99,351	99,351
Indonesia	38,044	38,188	38,127	38,500	39,200	38,600
Iran	3,250	3,300	3,350	3,400	3,450	3,450
Japan	8,250	8,230	8,200	8,180	8,200	8,150
Korea, South	5,175	4,880	4,489	4,422	4,450	4,450
Nigeria	4,800	5,600	5,300	5,800	6,100	6,100
Philippines	12,900	12,860	12,850	12,850	13,200	13,200
Thailand	10,300	10,400	10,600	10,875	10,900	11,200
Vietnam	19,400	19,650	21,900	22,000	21,900	21,900
Others	53,813	56,828	58,756	60,798	60,280	60,343
Subtotal	440,576	456,489	464,738	476,097	479,484	478,902
United States	4,329	3,492	3,779	3,996	4,190	4,126
World Total	444,905	459,981	468,517	480,093	483,674	483,028
Ending Stocks						
China	42,574	45,023	46,826	46,814	46,914	46,914
India	23,500	25,100	25,440	22,651	16,800	16,800
Indonesia	7,131	7,403	6,476	5,501	4,101	4,451
Japan	2,897	2,735	2,857	3,108	2,757	3,262
Pakistan	300	550	500	1,431	1,130	1,761
Philippines	2,459	1,509	1,487	1,695	2,295	2,295
Thailand	5,615	9,330	12,808	11,724	9,274	8,974
Others	13,806	13,847	12,674	13,062	13,059	12,767
Subtotal	98,282	105,497	109,068	105,986	96,330	97,224
United States	1,514	1,303	1,156	1,025	1,307	1,355
World Total	99,796	106,800	110,224	107,011	97,637	98,579

Note: All data are reported on a milled basis.

Regional Rice Imports, Production, Consumption, and Stocks

Thousand Metric Tons

	2010/11	2011/12	2012/13	2013/14	Mar 2014/15	Apr 2014/15
TY Imports						
North America	1,654	1,664	1,776	1,777	1,795	1,825
Caribbean	1,099	845	980	924	1,025	1,025
South America	1,396	1,896	1,843	1,824	1,992	1,992
Other Europe	128	114	125	91	130	130
Former Soviet Union - 12	366	456	544	526	441	441
Middle East	6,099	6,455	7,152	6,673	6,715	6,625
North Africa	381	777	487	495	485	485
Sub-Saharan Africa	9,865	12,245	11,850	13,201	12,930	12,895
East Asia	2,444	4,389	5,332	5,761	6,260	6,260
South Asia	1,864	737	722	1,992	1,350	1,320
Southeast Asia	6,418	5,488	3,606	5,020	5,050	5,000
Others	2,314	2,158	2,197	2,488	2,225	2,275
Total	34,028	37,224	36,614	40,772	40,398	40,273
Production						
North America	7,739	5,979	6,479	6,248	7,223	7,226
Caribbean	943	1,002	974	1,040	1,079	1,079
South America	17,197	15,215	15,852	16,384	16,604	16,546
European Union - 28	2,172	2,139	2,100	1,923	1,974	1,881
Former Soviet Union - 12	1,321	1,294	1,294	1,205	1,250	1,252
Middle East	2,131	2,170	2,251	2,450	2,410	2,410
North Africa	3,139	4,289	4,704	4,789	4,500	4,530
Sub-Saharan Africa	13,313	12,886	12,735	12,896	13,023	12,910
East Asia	151,636	155,342	157,692	157,689	159,251	159,220
South Asia	138,116	151,656	150,892	154,286	150,050	150,450
Southeast Asia	111,008	113,649	115,450	116,682	116,301	115,901
Others	1,245	1,364	1,518	1,288	1,191	1,191
Total	449,960	466,985	471,941	476,880	474,856	474,596
Domestic Consumption						
North America	5,429	4,668	4,977	5,233	5,430	5,366
Central America	1,109	1,156	1,181	1,188	1,213	1,213
Caribbean	2,055	1,997	1,959	1,996	2,098	2,098
South America	14,427	14,180	14,404	14,561	14,658	14,658
European Union - 28	3,250	3,300	3,250	3,250	3,260	3,275
Former Soviet Union - 12	1,425	1,422	1,568	1,533	1,461	1,461
Middle East	8,293	8,603	8,854	9,123	9,165	9,115
North Africa	3,677	4,045	4,572	4,480	4,460	4,460
Sub-Saharan Africa	21,598	23,741	24,524	25,606	25,669	25,712
East Asia	151,618	156,066	160,198	162,552	164,535	164,470
South Asia	130,792	136,823	137,570	143,946	144,421	144,491
Southeast Asia	98,530	99,148	101,968	103,036	104,221	103,921
Others	634	661	707	697	530	530
Total	442,837	455,810	465,732	477,201	481,121	480,770
Ending Stocks						
North America	1,734	1,455	1,345	1,176	1,495	1,546
Central America	249	273	241	217	211	211
Caribbean	122	157	104	85	91	91
South America	2,220	1,606	1,491	1,765	2,018	1,860
European Union - 28	1,215	1,146	1,188	1,149	1,185	1,085
Middle East	1,731	1,526	2,039	1,835	1,765	1,725
North Africa	122	487	427	602	637	907
Sub-Saharan Africa	1,360	2,209	1,923	1,643	1,671	1,401
East Asia	46,875	48,887	50,826	51,186	50,944	51,620
South Asia	25,342	27,511	27,019	25,689	19,437	20,068
Southeast Asia	18,599	21,369	23,197	21,305	17,935	17,785
Oceania	27	40	238	236	100	130
Others	200	134	186	123	148	150
Total	99,796	106,800	110,224	107,011	97,637	98,579

NOTES: Regional definitions appear on last page of this circular. Imports are reported on a trade year basis. All other data are reported using local marketing years.

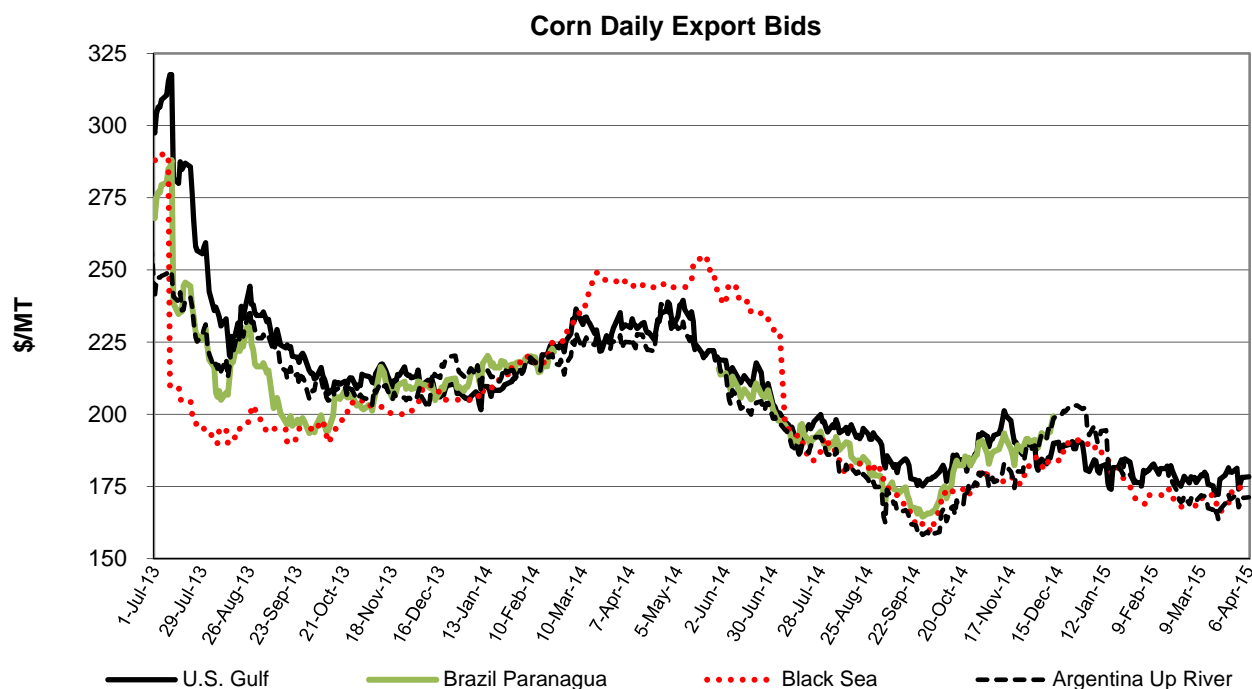
COARSE GRAINS: WORLD MARKETS AND TRADE

OVERVIEW

World corn production is boosted, supported by larger crops mainly in Serbia, Mexico, and Argentina. Trade is raised as stronger demand in several key countries--including Indonesia, Algeria, China, and Iran--more than offsets weaker imports by Mexico. U.S. exports and the season-average farm price are both unchanged.

PRICES

Following the release of the March WASDE report, U.S. corn quotes gyrated in advance of the USDA *Prospective Plantings* report. Prices climbed following the report's release but ended in early April, largely unchanged at \$178/ton. Argentine quotes moved in tandem with U.S. corn, remaining at a \$7/ton discount as new-crop harvest gets underway. In contrast, Black Sea quotes rose overall and are now only about \$3/ton below U.S. prices. Brazilian quotes were not available.



TRADE CHANGES IN 2014/15

Selected Exporters

- **Argentine corn** is raised 1.5 million tons to 16.0 million on a larger crop and forecast stronger-than-expected shipments during the April-September time period.

-
- **Serbian corn** is boosted 500,000 tons to 3.0 million on a higher crop estimate and the rapid pace of shipments.
 - **U.S. sorghum** is up sharply by 1.5 million tons to a record 9.0 million on continued sales and shipments to China. **Chinese imports** are also raised 1.5 million tons to 8.5 million.

Selected Importers

- **Algerian corn** is boosted 600,000 tons to 4.0 million on shipments from Argentina.
- **Chilean and Colombian corn** are each raised 200,000 tons to 1.5 million and 4.4 million, respectively, on pace and lower expected sorghum imports.
- **Chinese corn** is boosted 500,000 tons to 3.0 million because of strong shipments from Ukraine.
- **Indonesian corn** is up sharply by 900,000 tons to 3.5 million on higher demand from the feed sector, mainly poultry.
- **Iranian corn** is raised 500,000 tons to 6.0 million on trade data.
- **Mexican corn** is cut 900,000 tons to 10.0 million on a larger crop.
- **Peruvian corn** is up 300,000 tons to 2.6 million because of robust purchases from the United States.

World Coarse Grain Trade
October/September Year, Thousand Metric Tons

	2010/11	2011/12	2012/13	2013/14	2014/15 Mar	2014/15 Apr
TY Exports						
Argentina	18,628	22,307	29,496	16,633	17,605	19,105
Australia	4,897	7,279	6,410	7,003	6,125	6,125
Brazil	11,591	12,677	26,078	22,057	22,015	22,015
Canada	4,427	3,853	4,669	5,455	3,600	3,600
European Union	5,866	7,177	8,914	7,837	10,405	10,380
India	3,437	4,858	5,541	4,524	2,850	2,850
Paraguay	1,201	2,188	2,858	2,719	2,000	2,000
Russia	1,029	5,997	4,365	7,044	7,010	7,110
Serbia	2,013	2,345	628	1,761	2,525	3,025
Ukraine	7,490	17,447	15,527	24,124	20,880	20,880
Others	6,195	7,127	7,078	8,147	6,175	6,330
Subtotal	66,774	93,255	111,564	107,304	101,190	103,420
United States	49,247	40,153	20,586	56,920	53,285	54,785
World Total	116,021	133,408	132,150	164,224	154,475	158,205
TY Imports						
Algeria	3,007	3,741	3,289	4,944	4,010	4,760
Brazil	650	1,211	1,240	1,246	1,205	1,205
Canada	1,056	764	523	714	1,535	1,535
Chile	1,271	1,523	1,327	1,615	1,625	1,775
China	2,697	7,924	5,604	12,445	15,650	17,650
Colombia	4,155	4,103	4,088	4,717	4,730	4,780
Dominican Republic	999	1,054	1,046	1,011	1,200	1,200
Egypt	5,840	7,250	5,096	8,779	7,530	7,530
European Union	8,635	6,908	11,777	16,262	8,205	8,205
Indonesia	3,041	1,724	2,719	3,501	2,600	3,500
Iran	4,000	5,700	4,800	6,600	7,000	7,500
Israel	1,446	1,530	1,564	2,044	2,075	2,075
Japan	18,590	17,730	17,743	17,501	17,790	17,790
Jordan	917	1,144	1,202	1,400	1,200	1,200
Korea, South	8,168	7,726	8,265	10,499	9,690	9,690
Libya	543	829	1,220	1,150	1,250	1,250
Malaysia	2,809	3,309	3,048	3,400	3,400	3,400
Mexico	10,760	12,819	7,623	11,321	11,200	10,300
Morocco	2,059	2,479	1,831	2,640	2,700	2,700
Peru	2,079	1,928	2,404	2,349	2,425	2,725
Saudi Arabia	8,138	10,485	12,390	11,331	10,150	10,150
Taiwan	4,277	4,478	4,398	4,350	4,350	4,350
Turkey	496	782	1,922	1,977	2,250	2,250
Venezuela	1,251	2,596	2,146	2,626	2,600	2,600
Vietnam	1,000	1,600	1,700	2,800	2,000	2,000
Others	14,786	15,427	14,095	15,697	16,135	16,060
Subtotal	112,670	126,764	123,060	152,919	144,505	148,180
Unaccounted	902	3,502	2,589	7,988	6,913	6,918
United States	2,449	3,142	6,501	3,317	3,057	3,107
World Total	116,021	133,408	132,150	164,224	154,475	158,205

TY=Trade Year, see Endnotes.

World Coarse Grains Production, Consumption, and Stocks
Local Marketing Years, Thousand Metric Tons

	2010/11	2011/12	2012/13	2013/14	2014/15 Mar	2014/15 Apr
Production						
Argentina	33,258	30,105	37,246	35,665	31,016	31,516
Australia	11,485	12,257	11,414	12,449	11,537	11,537
Brazil	60,380	75,884	84,253	82,603	77,713	77,713
Canada	22,668	22,921	24,427	28,745	21,915	21,915
China	183,771	198,635	212,192	225,070	222,150	222,150
Ethiopia	11,193	12,264	12,286	14,468	13,350	13,350
European Union	142,836	149,886	145,887	158,506	168,248	168,248
India	43,370	42,250	39,940	42,920	39,330	39,330
Indonesia	6,800	8,850	8,500	9,100	9,200	9,400
Mexico	29,226	25,689	28,881	32,020	31,140	31,940
Nigeria	20,720	17,421	18,573	19,200	18,600	18,600
Russia	16,416	33,077	28,658	35,735	40,550	40,386
South Africa	11,310	13,268	12,873	15,578	12,096	11,823
Turkey	10,184	11,299	10,595	13,075	9,475	9,475
Ukraine	21,503	33,476	29,527	39,918	39,345	39,345
Others	144,084	145,959	145,621	147,244	152,244	156,413
Subtotal	769,204	833,241	850,873	912,296	897,909	903,141
United States	329,695	322,451	285,311	367,089	377,122	377,122
World Total	1,098,899	1,155,692	1,136,184	1,279,385	1,275,031	1,280,263
Domestic Consumption						
Argentina	11,033	10,510	12,050	13,595	14,431	14,431
Brazil	52,548	53,653	55,803	58,078	59,603	59,603
Canada	21,201	20,285	20,257	22,485	21,490	21,490
China	188,448	196,192	209,671	227,600	235,750	237,250
Egypt	13,332	12,736	12,905	14,080	14,678	14,778
Ethiopia	10,700	11,850	12,150	14,300	14,100	14,100
European Union	154,642	151,460	153,095	164,020	164,420	164,545
India	38,850	37,750	35,275	37,600	36,400	36,400
Indonesia	9,800	10,500	10,900	11,900	12,000	12,200
Japan	18,875	17,990	18,030	17,690	17,990	17,990
Mexico	39,785	37,985	36,195	40,885	41,940	41,940
Nigeria	20,670	17,321	18,700	19,250	18,650	18,650
Russia	18,131	27,728	25,134	28,519	32,400	32,189
Turkey	11,075	11,755	13,005	13,430	13,330	13,330
Ukraine	13,772	15,559	14,661	16,227	16,585	16,585
Others	208,415	214,394	218,460	223,763	232,049	234,302
Subtotal	831,977	866,115	860,391	933,070	951,668	954,559
United States	297,492	288,810	275,537	305,112	313,014	310,592
World Total	1,129,469	1,154,925	1,135,928	1,238,182	1,264,682	1,265,151
Ending Stocks						
Brazil	10,836	9,821	14,559	19,290	18,068	18,090
China	50,126	60,362	68,378	78,260	80,185	80,685
European Union	16,743	15,596	12,879	14,973	15,860	16,036
Iran	4,138	4,734	3,934	3,834	4,434	4,534
Mexico	2,041	1,857	1,624	3,579	3,479	3,379
Saudi Arabia	1,720	3,211	3,391	4,488	4,073	4,073
Ukraine	2,149	2,421	2,330	3,330	3,760	3,760
Others	45,387	40,374	35,825	45,587	41,319	43,127
Subtotal	133,140	138,376	142,920	173,341	171,178	173,684
United States	32,288	27,819	23,531	34,313	47,879	49,082
World Total	165,428	166,195	166,451	207,654	219,057	222,766

Regional Coarse Grains Imports, Production, Consumption, and Stocks

Thousand Metric Tons

	2010/11	2011/12	2012/13	2013/14	Mar 2014/15	Apr 2014/15
TY Imports						
North America	14,265	16,725	14,647	15,352	15,792	14,942
Central America	2,900	2,769	2,470	2,891	3,200	3,325
Caribbean	2,193	2,159	2,327	2,325	2,510	2,510
South America	10,536	11,968	11,804	13,183	13,200	13,600
European Union - 28	8,635	6,908	11,777	16,262	8,205	8,205
Former Soviet Union - 12	1,133	1,038	725	720	780	780
Middle East	18,690	23,348	24,922	26,468	26,190	26,690
North Africa	12,407	15,370	13,046	18,969	16,690	17,440
Sub-Saharan Africa	2,038	3,245	2,675	2,885	3,025	3,025
East Asia	33,888	38,040	36,163	44,900	47,610	49,610
Southeast Asia	7,558	7,317	8,058	11,204	9,280	10,080
Others	876	1,019	947	1,077	1,080	1,080
Total	115,119	129,906	129,561	156,236	147,562	151,287
Production						
North America	381,589	371,061	338,619	427,854	430,177	430,977
South America	106,037	117,970	135,056	131,156	122,701	123,266
European Union - 28	142,836	149,886	145,887	158,506	168,248	168,248
Other Europe	9,996	9,497	6,584	8,978	9,816	10,683
Former Soviet Union - 12	47,474	78,648	68,221	87,627	91,616	91,452
Middle East	19,574	20,398	18,232	20,767	16,736	16,736
North Africa	12,159	11,142	10,129	11,659	10,989	11,199
Sub-Saharan Africa	99,906	100,161	104,166	104,461	102,797	105,898
East Asia	185,806	200,771	214,639	227,482	224,607	224,575
South Asia	50,624	50,314	48,598	51,948	48,378	48,378
Southeast Asia	26,374	28,379	29,138	30,802	31,901	32,131
Oceania	12,030	12,813	12,082	13,095	12,197	12,197
Others	4,494	4,652	4,833	5,050	4,868	4,523
Total	1,098,899	1,155,692	1,136,184	1,279,385	1,275,031	1,280,263
Domestic Consumption						
North America	358,478	347,080	331,989	368,482	376,444	374,022
South America	84,079	85,233	89,388	93,906	97,311	97,386
European Union - 28	154,642	151,460	153,095	164,020	164,420	164,545
Other Europe	8,714	8,374	7,104	7,858	8,196	8,016
Former Soviet Union - 12	41,792	54,403	50,205	55,981	60,343	60,132
Middle East	38,540	40,949	43,098	44,638	46,191	46,191
North Africa	25,490	25,266	24,936	27,650	29,310	29,810
Sub-Saharan Africa	98,894	98,652	103,932	103,865	104,730	107,072
East Asia	221,856	228,717	243,025	261,846	270,701	272,101
South Asia	46,064	45,658	43,484	46,377	45,379	45,379
Southeast Asia	33,139	34,612	35,867	37,811	39,240	39,240
Oceania	7,495	6,518	6,132	6,040	6,167	6,167
Others	9,586	9,556	9,573	10,060	10,398	10,314
Total	1,128,769	1,136,478	1,141,828	1,228,534	1,258,830	1,260,375
Ending Stocks						
North America	37,878	33,066	28,239	42,491	54,317	55,420
South America	20,526	14,140	19,466	24,724	23,076	22,854
European Union - 28	16,743	15,596	12,879	14,973	15,860	16,036
Other Europe	1,455	1,023	611	806	1,226	1,323
Former Soviet Union - 12	5,480	6,160	5,037	6,699	8,552	8,299
Middle East	8,157	10,578	9,328	11,206	10,191	10,291
North Africa	4,789	5,504	3,522	5,717	4,374	4,926
Sub-Saharan Africa	8,029	8,935	8,599	9,185	8,226	9,066
East Asia	53,399	63,387	71,030	81,533	83,061	83,492
South Asia	3,086	2,974	2,819	4,112	3,926	3,926
Southeast Asia	3,508	3,061	3,225	4,202	4,299	5,198
Oceania	1,583	978	915	1,059	974	974
Others	795	793	781	947	975	961
Total	165,428	166,195	166,451	207,654	219,057	222,766

NOTES: Regional definitions appear on last page of this circular. Imports are reported on a trade year basis. All other data are reported using local marketing years.

World Corn Trade
October/September Year, Thousand Metric Tons

	2010/11	2011/12	2012/13	2013/14	2014/15 Mar	2014/15 Apr
TY Exports						
Argentina	15,198	16,501	22,789	12,846	14,500	16,000
Brazil	11,582	12,674	26,044	22,041	22,000	22,000
Burma	175	200	550	600	600	600
European Union	1,096	3,287	2,193	2,401	2,500	2,500
India	3,376	4,674	4,768	3,889	2,500	2,500
Paraguay	1,201	2,188	2,858	2,714	2,000	2,000
Russia	37	2,027	1,917	4,192	2,500	2,500
Serbia	2,004	2,331	601	1,736	2,500	3,000
South Africa	2,839	1,831	2,398	2,104	1,000	1,000
Ukraine	5,008	15,157	12,726	20,004	18,000	18,000
Others	4,031	4,465	5,403	6,429	4,215	4,370
Subtotal	46,547	65,335	82,247	78,956	72,315	74,470
United States	45,162	38,389	18,262	50,707	45,500	45,500
World Total	91,709	103,724	100,509	129,663	117,815	119,970
TY Imports						
Algeria	2,741	3,231	2,918	4,156	3,400	4,000
Canada	984	747	493	679	1,500	1,500
Chile	526	906	844	1,456	1,300	1,500
China	979	5,231	2,702	3,277	2,500	3,000
Colombia	3,511	3,209	3,264	4,333	4,200	4,400
Cuba	838	746	911	928	900	900
Dominican Republic	999	1,054	1,046	1,011	1,200	1,200
Egypt	5,803	7,154	5,059	8,726	7,500	7,500
European Union	7,385	6,113	11,362	15,919	8,000	8,000
Guatemala	676	691	678	767	850	850
Indonesia	3,041	1,724	2,719	3,501	2,600	3,500
Iran	3,500	4,000	3,700	5,500	5,500	6,000
Israel	1,029	1,221	1,224	1,652	1,700	1,700
Japan	15,648	14,892	14,412	15,121	15,400	15,400
Korea, South	8,107	7,636	8,174	10,406	9,600	9,600
Malaysia	2,809	3,309	3,048	3,400	3,400	3,400
Mexico	8,252	11,172	5,676	10,954	10,900	10,000
Morocco	1,738	1,943	1,684	2,200	2,200	2,200
Peru	1,939	1,772	2,254	2,232	2,300	2,600
Saudi Arabia	1,933	1,816	2,063	2,684	3,500	3,500
Taiwan	4,134	4,341	4,232	4,189	4,200	4,200
Tunisia	677	853	846	1,000	900	900
Turkey	453	729	1,656	1,381	1,500	1,500
Venezuela	1,251	2,596	2,146	2,626	2,600	2,600
Vietnam	1,000	1,600	1,700	2,800	2,000	2,000
Others	10,402	11,753	9,765	11,681	12,160	12,085
Subtotal	90,355	100,439	94,576	122,579	111,810	114,035
Unaccounted	670	2,520	1,668	6,357	5,355	5,285
United States	684	765	4,265	727	650	650
World Total	91,709	103,724	100,509	129,663	117,815	119,970

TY=Trade Year, see Endnotes.

World Corn Production, Consumption, and Stocks
Local Marketing Years, Thousand Metric Tons

	2010/11	2011/12	2012/13	2013/14	2014/15 Mar	2014/15 Apr
Production						
Argentina	25,200	21,000	27,000	26,000	23,500	24,000
Brazil	57,400	73,000	81,500	80,000	75,000	75,000
Canada	12,043	11,359	13,060	14,194	11,500	11,500
China	177,245	192,780	205,614	218,490	215,500	215,500
Ethiopia	4,895	6,069	6,158	7,451	6,500	6,500
European Union	58,272	68,123	58,896	64,259	74,160	74,160
India	21,730	21,760	22,260	24,260	22,500	22,500
Indonesia	6,800	8,850	8,500	9,100	9,200	9,400
Mexico	21,058	18,726	21,591	22,880	23,200	24,000
Nigeria	8,800	9,250	7,630	7,700	7,500	7,500
Philippines	7,271	7,130	7,261	7,532	7,900	7,980
Russia	3,075	6,962	8,213	11,635	11,500	11,325
Serbia	6,800	6,400	3,750	5,900	6,850	7,700
South Africa	10,924	12,759	12,365	14,982	11,500	11,300
Ukraine	11,919	22,838	20,922	30,900	28,450	28,450
Others	86,274	88,277	90,084	92,146	93,810	94,016
Subtotal	519,706	575,283	594,804	637,429	628,570	630,831
United States	315,618	312,789	273,192	351,272	361,091	361,091
World Total	835,324	888,072	867,996	988,701	989,661	991,922
Total Consumption						
Argentina	7,300	7,000	7,900	8,800	9,400	9,400
Brazil	49,500	50,500	52,500	55,000	56,500	56,500
Canada	11,761	11,636	11,605	12,700	12,900	12,900
China	180,000	188,000	200,000	212,000	216,000	216,000
Egypt	12,500	11,700	12,000	13,200	13,800	13,900
European Union	64,900	69,500	69,600	76,500	78,500	78,500
India	18,100	17,200	17,500	19,600	20,000	20,000
Indonesia	9,800	10,500	10,900	11,900	12,000	12,200
Japan	15,700	14,900	14,500	15,100	15,400	15,400
Korea, South	8,214	7,815	8,481	9,891	10,100	10,100
Mexico	29,500	29,000	27,000	31,700	33,550	33,550
Philippines	7,200	7,400	7,400	8,000	8,400	8,400
Russia	3,200	4,700	6,400	7,500	9,000	8,800
South Africa	10,650	10,700	11,000	11,500	11,300	11,200
Ukraine	6,500	7,800	8,100	9,900	10,400	10,400
Others	133,627	140,247	141,146	148,459	153,082	153,106
Subtotal	567,320	605,610	601,757	660,244	674,374	673,428
United States	284,549	277,914	262,973	293,045	302,147	300,877
World Total	851,869	883,524	864,730	953,289	976,521	974,305
Ending Stocks						
Brazil	10,278	9,212	14,150	18,972	17,750	17,772
China	49,415	59,335	67,570	77,315	79,215	79,715
European Union	5,233	6,682	5,147	6,424	7,584	7,584
Indonesia	697	732	1,040	1,729	1,490	2,399
Iran	2,790	3,386	2,186	2,586	3,086	3,186
Mexico	1,112	1,316	1,061	2,694	2,744	2,644
Ukraine	1,121	1,051	1,191	2,237	2,337	2,337
Others	28,323	25,325	22,223	27,590	25,922	26,400
Subtotal	98,969	107,039	114,568	139,547	140,128	142,037
United States	28,644	25,122	20,859	31,292	45,149	46,419
World Total	127,613	132,161	135,427	170,839	185,277	188,456

Regional Corn Imports, Production, Consumption, and Stocks

Thousand Metric Tons

	2010/11	2011/12	2012/13	2013/14	Mar 2014/15	Apr 2014/15
TY Imports						
North America	9,920	12,684	10,434	12,360	13,050	12,150
Central America	2,889	2,766	2,470	2,890	3,200	3,325
South America	8,372	9,886	9,643	11,931	11,620	12,220
European Union - 28	7,385	6,113	11,362	15,919	8,000	8,000
Former Soviet Union - 12	329	328	324	415	415	415
Middle East	9,942	10,686	10,738	13,542	14,750	15,250
North Africa	11,323	13,827	11,154	16,732	14,700	15,300
Sub-Saharan Africa	1,547	2,579	1,999	2,215	2,390	2,390
East Asia	29,024	32,282	29,673	33,098	31,830	32,330
Southeast Asia	7,541	7,304	8,040	11,164	9,260	10,060
Caribbean	2,193	2,159	2,327	2,325	2,510	2,510
Others	574	590	677	715	735	735
Total	91,039	101,204	98,841	123,306	112,460	114,685
Production						
North America	348,719	342,874	307,843	388,346	395,791	396,591
South America	93,105	103,988	119,769	116,647	110,065	110,630
European Union - 28	58,272	68,123	58,896	64,259	74,160	74,160
Other Europe	8,291	7,810	4,915	7,233	8,066	8,916
Former Soviet Union - 12	18,434	34,121	32,310	46,898	43,644	43,469
Middle East	6,448	7,164	6,330	6,753	6,548	6,548
North Africa	6,780	5,722	5,891	6,001	5,951	6,161
Sub-Saharan Africa	57,860	62,102	60,564	64,349	60,946	61,070
East Asia	178,955	194,585	207,760	220,595	217,649	217,617
South Asia	27,663	28,536	29,705	31,900	30,160	30,160
Central America	3,497	3,602	3,743	3,893	3,743	3,366
Southeast Asia	26,135	28,138	28,893	30,557	31,656	31,886
Others	1,165	1,307	1,377	1,270	1,282	1,348
Total	835,324	888,072	867,996	988,701	989,661	991,922
Domestic Consumption						
North America	325,810	318,550	301,578	337,445	348,597	347,327
South America	73,773	74,921	78,356	82,895	85,745	86,045
European Union - 28	64,900	69,500	69,600	76,500	78,500	78,500
Other Europe	6,741	6,392	5,194	5,853	6,160	5,960
Former Soviet Union - 12	13,185	16,420	18,085	21,435	23,210	23,010
Middle East	16,885	17,348	18,431	19,060	21,335	21,335
North Africa	18,625	18,000	18,450	20,650	21,650	22,050
Sub-Saharan Africa	56,618	60,513	60,057	63,025	62,282	62,156
East Asia	209,870	217,047	229,434	243,271	247,985	247,885
South Asia	23,981	23,770	24,480	26,970	27,570	27,570
Southeast Asia	32,893	34,357	35,609	37,560	38,960	38,960
Central America	6,350	6,350	6,175	6,625	6,800	6,725
Others	3,370	3,344	3,556	3,506	3,685	3,710
Total	853,001	866,512	869,005	944,795	972,479	971,233
Ending Stocks						
North America	31,019	27,803	23,469	35,586	49,093	50,263
South America	18,153	12,805	17,531	22,258	21,070	20,873
European Union - 28	5,233	6,682	5,147	6,424	7,584	7,584
Other Europe	1,212	771	353	532	973	1,073
Former Soviet Union - 12	1,904	2,445	2,004	3,236	3,325	3,350
Middle East	3,918	4,548	3,191	4,026	4,294	4,394
North Africa	2,107	2,994	1,712	3,132	2,515	2,833
Sub-Saharan Africa	6,133	6,733	6,180	7,111	6,303	6,650
East Asia	52,082	61,836	69,729	80,129	81,660	82,091
South Asia	1,549	1,680	2,080	3,239	3,179	3,179
Southeast Asia	3,504	3,058	3,220	4,198	4,295	5,194
Central America	507	503	474	602	690	543
Others	292	303	337	366	296	429
Total	127,613	132,161	135,427	170,839	185,277	188,456

NOTES: Regional definitions appear on last page of this circular. Imports are reported on a trade year basis. All other data are reported using local marketing years.

World Barley Trade
October/September Year, Thousand Metric Tons

	2010/11	2011/12	2012/13	2013/14	2014/15 Mar	2014/15 Apr
TY Exports						
Argentina	1,531	3,631	3,647	2,829	1,600	1,600
Australia	4,088	5,819	4,621	6,262	5,000	5,000
Canada	1,052	1,437	1,316	1,714	1,300	1,300
European Union	4,581	3,646	6,473	4,926	7,500	7,500
India	30	52	542	546	300	300
Kazakhstan	224	659	151	575	500	500
Moldova	10	5	20	15	15	15
Russia	969	3,668	2,366	2,762	4,400	4,500
Serbia	9	14	26	25	25	25
Ukraine	2,446	2,166	2,659	3,827	2,700	2,700
Others	35	120	151	44	10	10
Subtotal	14,975	21,217	21,972	23,525	23,350	23,450
United States	222	179	163	336	250	250
World Total	15,197	21,396	22,135	23,861	23,600	23,700
TY Imports						
Algeria	262	501	364	778	600	750
Belarus	25	100	25	50	100	100
Brazil	362	274	369	400	400	400
China	1,656	2,541	2,184	4,891	6,000	6,000
Colombia	251	301	232	275	275	275
Iran	500	1,700	1,100	1,100	1,500	1,500
Israel	287	276	244	275	300	300
Japan	1,359	1,257	1,356	1,294	1,300	1,300
Jordan	544	736	831	950	650	650
Kuwait	317	376	388	400	400	400
Libya	179	183	573	500	550	550
Mexico	26	144	47	108	100	100
Morocco	222	536	147	400	500	500
Peru	83	97	103	100	100	100
Russia	411	372	278	125	100	100
Saudi Arabia	6,200	8,600	10,200	8,500	6,500	6,500
Syria	300	200	300	250	500	500
Tunisia	281	218	764	456	300	300
Turkey	39	46	266	596	750	750
United Arab Emirates	334	524	541	550	550	550
Others	1,259	1,428	951	917	935	935
Subtotal	14,897	20,410	21,263	22,915	22,410	22,560
Unaccounted	152	516	441	424	690	640
United States	148	470	431	522	500	500
World Total	15,197	21,396	22,135	23,861	23,600	23,700

TY=Trade Year, see Endnotes.

World Barley Production, Consumption, and Stocks
Local Marketing Years, Thousand Metric Tons

	2010/11	2011/12	2012/13	2013/14	2014/15 Mar	2014/15 Apr
Production						
Algeria	1,500	1,350	1,500	1,500	1,300	1,300
Argentina	2,950	4,500	5,000	4,750	3,000	3,000
Australia	7,995	8,221	7,472	9,669	7,950	7,950
Belarus	1,966	1,979	1,917	1,674	2,250	2,250
Canada	7,627	7,892	8,012	10,237	7,120	7,120
China	1,972	1,637	1,626	1,500	1,550	1,550
Ethiopia	1,703	1,592	1,782	2,053	2,100	2,100
European Union	53,691	51,883	54,875	59,639	59,927	59,927
India	1,350	1,660	1,620	1,750	1,830	1,830
Iran	3,580	2,900	3,400	3,200	3,200	3,200
Kazakhstan	1,313	2,593	1,500	2,539	2,412	2,412
Morocco	2,570	2,340	1,200	2,700	1,700	1,700
Russia	8,350	16,938	13,952	15,389	20,000	20,026
Turkey	5,900	7,000	5,500	7,300	4,000	4,000
Ukraine	8,484	9,098	6,935	7,561	9,450	9,450
Others	8,322	8,592	8,740	9,307	9,082	9,093
Subtotal	119,273	130,175	125,031	140,768	136,871	136,908
United States	3,924	3,370	4,768	4,719	3,849	3,849
World Total	123,197	133,545	129,799	145,487	140,720	140,757
Total Consumption						
Algeria	1,600	1,800	2,000	2,050	2,050	2,150
Argentina	1,135	1,200	1,300	1,600	1,600	1,600
Australia	4,200	3,300	3,000	3,300	3,000	3,000
Belarus	2,000	2,100	2,000	1,800	2,200	2,200
Canada	7,464	6,916	6,809	7,746	6,700	6,700
China	4,050	3,800	4,000	6,300	7,600	7,600
Ethiopia	1,725	1,600	1,725	2,000	2,100	2,100
European Union	56,610	51,200	51,000	53,400	52,000	52,200
Iran	3,900	4,100	4,600	4,600	4,800	4,800
Kazakhstan	1,475	1,825	1,375	2,000	1,900	1,900
Morocco	3,050	3,100	1,900	2,300	2,800	2,800
Russia	9,500	14,300	12,100	12,600	14,400	14,400
Saudi Arabia	6,325	7,225	8,325	8,025	8,025	8,025
Turkey	6,000	6,750	6,200	6,950	6,050	6,050
Ukraine	6,000	6,300	5,100	5,100	4,900	4,900
Others	14,969	15,803	16,138	16,824	16,844	16,864
Subtotal	131,758	131,050	127,043	136,459	137,994	138,264
United States	4,536	4,170	4,638	4,775	4,286	4,177
World Total	136,294	135,220	131,681	141,234	142,280	142,441
Ending Stocks						
Algeria	1,236	1,458	1,217	1,178	1,044	1,278
Canada	1,502	1,195	983	1,924	1,069	1,069
European Union	7,938	6,069	5,071	5,613	5,540	5,440
Iran	1,348	1,348	1,748	1,248	1,348	1,348
Russia	1,386	848	726	973	2,273	1,999
Saudi Arabia	1,323	2,814	3,006	3,996	3,486	3,486
Ukraine	794	1,172	873	883	1,238	1,238
Others	6,862	6,449	5,403	7,424	5,794	5,785
Subtotal	22,389	21,353	19,027	23,239	21,792	21,643
United States	1,945	1,306	1,750	1,791	1,594	1,703
World Total	24,334	22,659	20,777	25,030	23,386	23,346

Regional Barley Imports, Production, Consumption, and Stocks

Thousand Metric Tons

	2010/11	2011/12	2012/13	2013/14	Mar 2014/15	Apr 2014/15
TY Imports						
North America	227	620	499	639	625	625
South America	922	851	1,064	960	985	985
European Union - 28	288	364	52	58	50	50
Other Europe	189	209	127	175	175	175
Former Soviet Union - 12	648	697	375	280	340	340
Middle East	8,604	12,543	13,956	12,662	11,210	11,210
North Africa	960	1,480	1,885	2,184	1,975	2,125
Sub-Saharan Africa	77	105	57	120	80	80
East Asia	3,107	3,924	3,663	6,314	7,425	7,425
South Asia	8	68	7	30	30	30
Oceania	15	19	9	15	15	15
Total	15,045	20,880	21,694	23,437	22,910	23,060
Production						
North America	12,223	11,749	13,812	15,506	11,519	11,519
South America	3,869	5,530	6,084	5,880	4,145	4,145
European Union - 28	53,691	51,883	54,875	59,639	59,927	59,927
Other Europe	1,142	1,189	1,193	1,268	1,274	1,291
Former Soviet Union - 12	21,574	32,227	25,958	29,153	35,737	35,763
Middle East	11,474	11,691	10,302	12,449	8,648	8,648
North Africa	4,546	4,410	3,309	4,729	4,109	4,109
Sub-Saharan Africa	2,095	2,099	2,283	2,521	2,613	2,607
East Asia	2,290	1,962	1,920	1,800	1,851	1,851
South Asia	1,990	2,267	2,152	2,457	2,537	2,537
Oceania	8,303	8,538	7,911	10,085	8,360	8,360
Total	123,197	133,545	129,799	145,487	140,720	140,757
Domestic Consumption						
North America	12,700	11,786	12,347	13,221	11,686	11,577
South America	2,936	3,077	3,327	3,661	3,695	3,695
European Union - 28	56,610	51,200	51,000	53,400	52,000	52,200
Other Europe	1,339	1,366	1,298	1,423	1,422	1,442
Former Soviet Union - 12	20,587	26,293	22,314	23,500	25,175	25,175
Middle East	19,884	22,016	22,785	23,881	23,081	23,081
North Africa	5,882	6,186	5,555	6,030	6,728	6,828
Sub-Saharan Africa	2,212	2,138	2,290	2,562	2,670	2,670
East Asia	5,847	5,580	5,806	8,055	9,355	9,355
South Asia	1,992	2,197	2,063	1,912	2,018	2,018
Oceania	4,550	3,650	3,425	3,725	3,425	3,425
Total	134,539	135,489	132,210	141,370	141,255	141,466
Ending Stocks						
North America	3,647	2,621	3,014	3,954	2,852	2,961
South America	818	547	685	964	799	799
European Union - 28	7,938	6,069	5,071	5,613	5,540	5,440
Other Europe	193	204	227	221	223	220
Former Soviet Union - 12	2,813	2,735	2,193	2,463	4,250	3,976
Middle East	4,162	5,933	6,042	7,097	5,819	5,819
North Africa	2,612	2,449	1,743	2,508	1,775	2,009
Sub-Saharan Africa	232	283	330	409	432	426
East Asia	659	961	737	796	717	717
South Asia	220	281	144	255	279	279
Oceania	1,040	576	591	750	700	700
Total	24,334	22,659	20,777	25,030	23,386	23,346

NOTES: Regional definitions appear on last page of this circular. Imports are reported on a trade year basis. All other data are reported using local marketing years.

World Sorghum Trade
October/September Year, Thousand Metric Tons

	2010/11	2011/12	2012/13	2013/14	2014/15 Mar	2014/15 Apr
TY Exports						
Argentina	1,893	2,163	3,059	953	1,500	1,500
Australia	575	1,185	1,425	405	800	800
Ethiopia	75	75	75	75	75	75
India	31	132	231	89	50	50
Nigeria	60	75	50	50	50	50
Ukraine	34	113	124	229	150	150
Uruguay	0	23	26	30	30	30
Others	147	139	149	162	140	140
Subtotal	2,815	3,905	5,139	1,993	2,795	2,795
United States	3,823	1,549	2,136	5,843	7,500	9,000
World Total	6,638	5,454	7,275	7,836	10,295	11,795
TY Imports						
Chile	729	544	404	109	250	200
China	4	84	631	4,161	7,000	8,500
Colombia	391	592	591	104	250	100
European Union	922	126	291	186	100	100
Japan	1,418	1,481	1,897	1,003	1,000	1,000
Kenya	11	74	102	100	100	100
Mexico	2,379	1,369	1,789	162	100	100
Saudi Arabia	5	69	127	147	150	150
Sudan	200	125	175	75	200	200
Taiwan	97	84	116	111	100	100
Others	564	534	509	594	390	390
Subtotal	6,720	5,082	6,632	6,752	9,640	10,940
Unaccounted	-83	369	400	1,081	648	848
United States	1	3	243	3	7	7
World Total	6,638	5,454	7,275	7,836	10,295	11,795

TY=Trade Year, see Endnotes.

World Sorghum Production, Consumption, and Stocks
Local Marketing Years, Thousand Metric Tons

	2010/11	2011/12	2012/13	2013/14	2014/15 Mar	2014/15 Apr
Production						
Argentina	4,400	4,200	4,700	4,400	4,000	4,000
Australia	1,935	2,239	2,230	1,107	2,000	2,000
Brazil	2,314	2,222	2,102	1,890	2,000	2,000
Burkina	1,990	1,500	1,924	1,880	1,900	1,836
Cameroon	1,099	1,150	1,100	1,150	1,150	1,150
Chad	680	648	1,172	745	900	900
China	2,456	2,051	2,556	2,700	2,700	2,700
Ethiopia	3,960	3,951	3,604	4,114	4,000	4,000
India	7,000	6,030	5,300	5,250	5,000	5,000
Mali	1,257	1,191	1,212	820	1,300	1,300
Mexico	7,385	6,425	6,174	8,500	7,300	7,300
Niger	1,300	807	1,376	1,287	1,200	1,000
Nigeria	6,750	6,900	5,943	6,500	6,300	6,300
Sudan	2,630	4,605	4,524	2,249	3,500	6,281
Tanzania	800	807	839	832	840	840
Others	6,398	7,009	6,676	6,891	6,947	6,563
Subtotal	52,354	51,735	51,432	50,315	51,037	53,170
United States	8,775	5,410	6,293	9,966	10,988	10,988
World Total	61,129	57,145	57,725	60,281	62,025	64,158
Total Consumption						
Argentina	1,900	1,900	2,300	2,700	2,900	2,900
Australia	1,405	1,105	1,105	755	1,205	1,205
Brazil	2,075	2,175	2,300	2,000	2,000	2,000
Burkina	1,900	1,500	1,900	1,900	1,900	1,800
Cameroon	1,109	1,175	1,110	1,165	1,175	1,175
Chad	700	650	1,150	850	900	900
China	2,200	2,200	3,200	6,800	9,600	11,100
Ethiopia	3,700	3,700	3,700	4,200	4,200	4,200
India	6,800	6,000	5,150	5,200	4,900	4,900
Japan	1,460	1,475	1,900	1,000	1,000	1,000
Mali	1,300	1,300	1,200	950	1,200	1,200
Mexico	9,400	8,100	8,100	8,300	7,500	7,500
Niger	1,250	950	1,200	1,300	1,300	1,100
Nigeria	6,700	6,800	5,900	6,450	6,250	6,250
Sudan	3,000	4,500	4,700	2,550	3,700	6,000
Others	9,694	9,449	9,123	8,311	8,750	8,143
Subtotal	54,631	54,472	52,810	55,506	59,092	62,005
United States	5,277	3,916	4,796	4,109	3,556	2,505
World Total	59,908	58,388	57,606	59,615	62,648	64,510
Ending Stocks						
Argentina	950	167	784	1,184	884	884
China	467	366	326	376	451	451
Mali	323	214	226	96	196	196
Mexico	724	418	281	643	543	543
Niger	117	24	225	237	162	162
Nigeria	190	215	208	208	208	208
Sudan	399	609	588	357	352	833
Others	2,026	2,054	1,746	1,470	1,343	1,341
Subtotal	5,196	4,067	4,384	4,571	4,139	4,618
United States	697	583	385	864	684	465
World Total	5,893	4,650	4,769	5,435	4,823	5,083

Regional Sorghum Imports, Production, Consumption, and Stocks

Thousand Metric Tons

	2010/11	2011/12	2012/13	2013/14	Mar 2014/15	Apr 2014/15
TY Imports						
North America	2,380	1,372	2,032	165	107	107
South America	1,218	1,200	1,071	262	565	365
European Union - 28	922	126	291	186	100	100
Other Europe	0	0	0	0	0	0
Middle East	121	101	194	231	205	205
North Africa	120	54	0	43	5	5
Sub-Saharan Africa	399	550	608	531	530	530
East Asia	1,523	1,655	2,650	5,281	8,105	9,605
Southeast Asia	17	13	18	40	20	20
Others	21	14	11	16	10	10
Total	6,721	5,085	6,875	6,755	9,647	10,947
Production						
North America	16,160	11,835	12,467	18,466	18,288	18,288
Central America	287	312	339	335	335	335
Caribbean	91	92	92	94	128	94
South America	7,351	7,124	7,496	7,003	6,762	6,762
European Union - 28	629	671	473	616	736	736
Middle East	853	764	814	800	780	780
North Africa	708	847	763	763	763	763
Sub-Saharan Africa	23,395	24,802	24,783	22,693	24,149	26,316
East Asia	2,460	2,054	2,560	2,704	2,704	2,704
South Asia	7,145	6,175	5,445	5,395	5,145	5,145
Southeast Asia	54	54	55	55	55	55
Oceania	1,935	2,239	2,230	1,107	2,000	2,000
Others	61	176	208	250	180	180
Total	61,129	57,145	57,725	60,281	62,025	64,158
Domestic Consumption						
North America	14,677	12,016	12,896	12,409	11,056	10,005
Central America	300	320	325	335	335	335
Caribbean	91	92	92	94	128	94
South America	5,739	6,006	6,085	5,754	6,202	5,977
European Union - 28	1,535	760	795	795	820	820
Middle East	962	789	1,052	894	985	985
North Africa	857	908	756	794	756	756
Sub-Saharan Africa	23,494	24,850	25,054	23,344	24,664	26,316
East Asia	3,764	3,771	5,221	7,921	10,710	12,210
South Asia	6,955	6,155	5,305	5,359	5,055	5,055
Southeast Asia	61	68	68	61	90	90
Oceania	1,405	1,105	1,105	755	1,205	1,205
Others	30	55	80	25	30	30
Total	59,870	56,895	58,834	58,540	62,036	63,878
Ending Stocks						
North America	1,421	1,001	666	1,507	1,227	1,008
Central America	32	25	39	40	40	40
South America	1,429	695	1,119	1,372	1,097	1,072
European Union - 28	21	14	5	17	13	13
Middle East	35	56	65	58	58	58
North Africa	69	60	66	76	83	83
Sub-Saharan Africa	1,640	1,878	2,032	1,625	1,446	1,950
East Asia	549	451	413	466	540	540
South Asia	327	223	145	108	158	158
Oceania	361	230	195	147	142	142
Others	9	17	24	19	19	19
Total	5,893	4,650	4,769	5,435	4,823	5,083

NOTES: Regional definitions appear on last page of this circular. Imports are reported on a trade year basis. All other data are reported using local marketing years.

World Oats Trade
October/September Year, Thousand Metric Tons

	2010/11	2011/12	2012/13	2013/14	2014/15 Mar	2014/15 Apr
TY Exports						
Argentina	6	12	1	5	5	5
Australia	209	174	240	270	250	250
Brazil	9	3	6	5	5	5
Canada	1,496	1,763	1,359	1,728	1,700	1,700
Chile	129	106	42	50	100	100
European Union	114	176	126	291	250	225
Russia	1	18	4	7	10	10
Others	4	6	6	10	10	10
Subtotal	1,968	2,258	1,784	2,366	2,330	2,305
United States	37	28	18	28	30	30
World Total	2,005	2,286	1,802	2,394	2,360	2,335
TY Imports						
Albania	5	0	0	0	0	0
Algeria	4	9	7	10	10	10
Argentina	0	0	0	0	0	0
Bosnia and Herzegovina	3	3	2	5	5	5
Canada	19	11	9	26	10	10
China	58	68	87	116	150	150
Colombia	2	1	1	5	5	5
Ecuador	11	22	19	20	20	20
European Union	4	3	4	3	5	5
Japan	64	54	51	46	50	50
Mexico	103	134	111	97	100	100
Norway	7	49	36	50	40	40
South Africa	15	11	11	19	25	25
Switzerland	49	56	46	50	50	50
Uruguay	11	8	6	5	5	5
Others	12	13	2	0	0	0
Subtotal	367	442	392	452	475	475
Unaccounted	170	114	69	81	185	110
United States	1,468	1,730	1,341	1,861	1,700	1,750
World Total	2,005	2,286	1,802	2,394	2,360	2,335

TY=Trade Year, see Endnotes.

World Oats Production, Consumption, and Stocks
Local Marketing Years, Thousand Metric Tons

	2010/11	2011/12	2012/13	2013/14	2014/15 Mar	2014/15 Apr
Production						
Algeria	88	67	110	110	110	110
Argentina	660	345	496	445	460	460
Australia	1,128	1,262	1,121	1,276	1,130	1,130
Belarus	442	448	422	352	470	470
Brazil	379	354	361	380	380	380
Canada	2,451	3,158	2,812	3,906	2,910	2,910
Chile	564	451	680	610	700	700
China	525	600	600	580	600	600
European Union	7,500	7,927	7,909	8,388	7,869	7,869
Kazakhstan	134	258	200	305	226	226
Mexico	111	51	84	90	90	90
Norway	299	231	236	236	236	236
Russia	3,218	5,332	4,027	4,932	5,250	5,267
Turkey	204	218	210	210	210	210
Ukraine	458	506	630	467	610	610
Others	296	372	315	328	327	327
Subtotal	18,457	21,580	20,213	22,615	21,578	21,595
United States	1,188	728	892	938	1,011	1,011
World Total	19,645	22,308	21,105	23,553	22,589	22,606
Total Consumption						
Algeria	89	75	119	120	120	120
Argentina	650	350	500	425	475	475
Australia	900	1,100	925	975	900	900
Belarus	475	450	400	375	450	450
Brazil	370	350	350	375	375	375
Canada	1,530	1,361	1,513	1,746	1,600	1,600
Chile	475	325	575	575	600	600
China	625	625	675	700	750	750
European Union	7,793	7,800	7,700	8,075	7,700	7,675
Kazakhstan	130	225	225	275	225	225
Mexico	185	185	195	185	190	190
Norway	295	270	295	270	295	295
Russia	3,450	5,000	4,300	4,900	5,200	5,200
Turkey	210	215	215	215	215	215
Ukraine	475	500	600	475	600	600
Others	467	519	451	491	489	489
Subtotal	18,124	19,589	19,136	20,386	20,344	20,243
United States	2,799	2,499	2,743	2,759	2,623	2,631
World Total	20,923	22,088	21,879	23,145	22,967	22,874
Ending Stocks						
Argentina	76	57	51	66	46	46
Australia	146	134	60	101	81	81
Canada	733	805	506	1,031	651	651
China	84	127	139	135	135	135
European Union	831	795	901	902	702	876
Russia	167	485	203	229	269	286
Ukraine	40	52	81	67	72	72
Others	169	196	206	192	187	182
Subtotal	2,246	2,651	2,147	2,723	2,143	2,329
United States	982	797	527	359	442	485
World Total	3,228	3,448	2,674	3,082	2,585	2,814

Regional Oats Imports, Production, Consumption, and Stocks

Thousand Metric Tons

	2010/11	2011/12	2012/13	2013/14	Mar 2014/15	Apr 2014/15
TY Imports						
North America	1,590	1,875	1,461	1,984	1,810	1,860
South America	24	31	26	30	30	30
European Union - 28	4	3	4	3	5	5
Other Europe	66	110	86	105	95	95
Former Soviet Union - 12	6	7	0	0	0	0
Middle East	4	4	0	0	0	0
North Africa	4	9	7	10	10	10
Sub-Saharan Africa	15	11	11	19	25	25
East Asia	122	122	138	162	200	200
Oceania	0	0	0	0	0	0
Total	1,835	2,172	1,733	2,313	2,175	2,225
Production						
North America	3,750	3,937	3,788	4,934	4,011	4,011
South America	1,644	1,191	1,577	1,478	1,585	1,585
European Union - 28	7,500	7,927	7,909	8,388	7,869	7,869
Other Europe	428	373	369	370	369	369
Former Soviet Union - 12	4,257	6,549	5,285	6,062	6,562	6,579
Middle East	204	218	210	210	210	210
North Africa	125	163	166	166	166	166
Sub-Saharan Africa	34	57	60	59	55	55
East Asia	527	602	602	582	602	602
Oceania	1,176	1,291	1,139	1,304	1,160	1,160
Total	19,645	22,308	21,105	23,553	22,589	22,606
Domestic Consumption						
North America	4,514	4,045	4,451	4,690	4,413	4,421
South America	1,563	1,092	1,490	1,448	1,525	1,525
European Union - 28	7,793	7,800	7,700	8,075	7,700	7,675
Other Europe	486	478	474	453	487	487
Former Soviet Union - 12	4,535	6,180	5,531	6,031	6,481	6,481
Middle East	210	215	215	215	215	215
North Africa	126	172	175	176	176	176
Sub-Saharan Africa	58	53	72	95	80	80
East Asia	685	685	730	750	800	800
Oceania	948	1,129	943	1,003	930	930
Total	20,918	21,849	21,781	22,936	22,807	22,790
Ending Stocks						
North America	1,720	1,605	1,034	1,393	1,096	1,139
South America	126	93	131	130	110	110
European Union - 28	831	795	901	902	702	876
Other Europe	50	48	31	53	30	30
Former Soviet Union - 12	235	592	332	346	407	424
Middle East	10	17	12	7	2	2
North Africa	1	1	1	1	1	1
Sub-Saharan Africa	14	29	28	11	16	11
East Asia	95	134	144	138	140	140
Oceania	146	134	60	101	81	81
Total	3,228	3,448	2,674	3,082	2,585	2,814

NOTES: Regional definitions appear on last page of this circular. Imports are reported on a trade year basis. All other data are reported using local marketing years.

World Rye Trade
October/September Year, Thousand Metric Tons

	2010/11	2011/12	2012/13	2013/14	2014/15 Mar	2014/15 Apr
TY Exports						
Belarus	150	25	25	25	25	25
Canada	221	159	181	96	100	100
European Union	71	59	122	201	150	150
Russia	22	284	78	83	100	100
Ukraine	2	9	16	59	25	25
Others	3	4	0	0	0	0
Subtotal	469	540	422	464	400	400
United States	3	8	7	6	5	5
World Total	472	548	429	470	405	405
TY Imports						
European Union	36	302	68	96	50	50
Israel	19	11	34	33	25	25
Japan	101	46	27	37	40	40
Korea, South	11	11	12	8	10	10
Norway	12	11	21	16	15	15
Russia	150	0	25	25	25	25
Switzerland	2	2	9	6	5	5
Others	0	8	1	0	0	0
Subtotal	331	391	197	221	170	170
Unaccounted	-7	-17	11	45	35	35
United States	148	174	221	204	200	200
World Total	472	548	429	470	405	405

TY=Trade Year, see Endnotes.

World Rye Production, Consumption, and Stocks
Local Marketing Years, Thousand Metric Tons

	2010/11	2011/12	2012/13	2013/14	2014/15 Mar	2014/15 Apr
Production						
Belarus	735	801	1,082	648	950	950
Canada	237	241	337	223	195	195
Chile	2	59	62	60	70	70
European Union	7,576	6,900	8,763	10,188	8,790	8,790
Russia	1,642	2,967	2,132	3,360	3,300	3,279
Turkey	365	366	370	350	350	350
Ukraine	464	579	676	638	475	475
Others	197	181	183	168	174	174
Subtotal	11,218	12,094	13,605	15,635	14,304	14,283
United States	190	154	166	194	183	183
World Total	11,408	12,248	13,771	15,829	14,487	14,466
Total Consumption						
Argentina	40	45	40	52	40	40
Belarus	650	750	1,000	650	900	900
Canada	136	101	124	108	100	100
Chile	2	59	62	60	70	70
European Union	8,204	7,400	8,700	9,650	8,900	8,850
Japan	105	55	25	40	40	40
Kazakhstan	40	30	50	40	65	65
Russia	1,850	2,850	2,000	3,100	3,300	3,300
Turkey	350	375	375	350	350	350
Ukraine	650	625	625	625	475	475
Others	155	142	170	136	128	128
Subtotal	12,216	12,404	13,205	14,817	14,381	14,331
United States	331	311	387	424	402	402
World Total	12,547	12,715	13,592	15,241	14,783	14,733
Ending Stocks						
Belarus	79	110	167	140	165	165
Canada	51	25	46	44	39	39
European Union	1,013	747	795	1,241	979	1,081
Japan	14	5	7	4	4	4
Russia	250	129	153	365	290	269
Turkey	32	24	18	18	18	18
Ukraine	189	132	166	128	98	98
Others	5	3	3	6	2	2
Subtotal	1,633	1,175	1,355	1,946	1,595	1,676
United States	20	11	10	7	10	10
World Total	1,653	1,186	1,365	1,953	1,605	1,686

Regional Rye Imports, Production, Consumption, and Stocks

Thousand Metric Tons

	2010/11	2011/12	2012/13	2013/14	Mar 2014/15	Apr 2014/15
TY Imports						
North America	148	174	221	204	200	200
South America	0	0	0	0	0	0
European Union - 28	36	302	68	96	50	50
Other Europe	14	13	31	22	20	20
Former Soviet Union - 12	150	5	25	25	25	25
Middle East	19	14	34	33	25	25
Sub-Saharan Africa	0	0	0	0	0	0
East Asia	112	57	39	45	50	50
Oceania	0	0	0	0	0	0
Total	479	565	418	425	370	370
Production						
North America	427	395	503	417	378	378
South America	45	107	105	115	113	113
European Union - 28	7,576	6,900	8,763	10,188	8,790	8,790
Other Europe	76	62	47	47	47	47
Former Soviet Union - 12	2,883	4,375	3,940	4,689	4,786	4,765
Middle East	365	366	370	350	350	350
Sub-Saharan Africa	3	3	3	3	3	3
East Asia	0	0	0	0	0	0
Oceania	33	40	40	20	20	20
Total	11,408	12,248	13,771	15,829	14,487	14,466
Domestic Consumption						
North America	467	412	511	532	502	502
South America	45	107	105	115	113	113
European Union - 28	8,204	7,400	8,700	9,650	8,900	8,850
Other Europe	89	75	78	69	67	67
Former Soviet Union - 12	3,190	4,255	3,675	4,415	4,740	4,740
Middle East	369	386	409	383	375	375
Sub-Saharan Africa	3	2	3	3	3	3
East Asia	116	66	37	48	50	50
Oceania	30	40	40	20	20	20
Total	12,513	12,743	13,558	15,235	14,770	14,720
Ending Stocks						
North America	71	36	56	51	49	49
South America	0	0	0	0	0	0
European Union - 28	1,013	747	795	1,241	979	1,081
Other Europe	0	0	0	0	0	0
Former Soviet Union - 12	523	374	489	639	555	534
Middle East	32	24	18	18	18	18
Sub-Saharan Africa	0	0	0	0	0	0
East Asia	14	5	7	4	4	4
Oceania	0	0	0	0	0	0
Total	1,653	1,186	1,365	1,953	1,605	1,686

NOTES: Regional definitions appear on last page of this circular. Imports are reported on a trade year basis. All other data are reported using local marketing years.



HISTORICAL DATA SERIES FOR SELECTED REGIONS AND COUNTRIES

CONTENTS

European Union: Grain Supply and Demand.....	35
China: Grain Supply and Demand	36
Other Europe: Grain Supply and Demand	37
Former Soviet Union: Grain Supply and Demand	38
Wheat Supply and Disappearance: Selected Exporters.....	42
Corn Supply and Disappearance: Selected Exporters	44
Barley Supply and Disappearance: Selected Exporters	46
Sorghum Supply and Disappearance: Selected Exporters	47
U.S. Grains: Supply and Distribution.....	48
Total Wheat and Coarse Grains: Supply and Demand.....	49
World Wheat and Coarse Grains: Supply and Demand	50
World Corn and Barley: Supply and Demand	51
World Rice: Supply and Demand.....	52

European Union: Grain Supply and Demand

Wheat and Coarse Grains Millions of Metric Tons/Hectares

	Area Harvested	Yield	Production	Imports	Exports	Feed Dom.	Domestic Consumption	Ending Stocks
Wheat								
2003/04	24.5	4.5	111.4	7.4	9.9	52.5	115.8	12.0
2004/05	26.2	5.6	147.7	7.1	14.7	59.3	123.9	28.3
2005/06	26.0	5.1	132.9	6.8	15.7	63.0	128.2	24.0
2006/07	24.7	5.1	125.7	5.2	13.9	60.2	126.2	14.8
2007/08	24.9	4.9	120.8	6.8	12.4	52.4	117.2	12.8
2008/09	26.8	5.7	151.9	7.7	25.4	60.5	127.6	19.4
2009/10	26.0	5.4	139.7	5.4	22.3	57.5	125.6	16.6
2010/11	26.0	5.3	136.7	4.6	23.1	52.5	122.8	11.9
2011/12	25.8	5.3	138.2	7.4	16.7	57.5	127.2	13.5
2012/13	26.0	5.2	133.9	5.3	22.7	51.0	119.3	10.8
2013/14	25.9	5.6	144.3	4.0	32.0	49.5	117.1	10.0
2014/15	26.7	5.9	156.4	5.5	33.5	54.5	123.1	15.3
Coarse Grains								
2003/04	33.2	4.0	134.1	8.2	4.0	111.9	147.7	13.6
2004/05	33.9	5.0	169.1	3.0	4.8	118.9	155.2	25.6
2005/06	33.2	4.5	149.5	2.7	4.3	112.4	150.7	22.8
2006/07	32.4	4.3	140.0	8.1	4.5	112.9	150.6	15.6
2007/08	32.6	4.3	138.7	20.3	4.5	121.6	157.1	13.0
2008/09	34.0	4.8	164.9	3.1	5.7	116.1	154.2	21.2
2009/10	32.9	4.8	157.6	2.9	3.0	114.8	152.4	26.2
2010/11	30.2	4.7	142.8	8.5	6.2	116.9	154.6	16.7
2011/12	30.2	5.0	149.9	7.0	6.5	113.2	151.5	15.6
2012/13	31.4	4.7	145.9	11.8	7.4	113.7	153.1	12.9
2013/14	31.3	5.1	158.5	16.2	8.6	122.3	164.0	15.0
2014/15	31.0	5.4	168.2	8.3	10.9	122.3	164.5	16.0
Wheat and Coarse Grains								
2003/04	57.7	4.3	245.5	15.6	13.9	164.3	263.5	25.6
2004/05	60.1	5.3	316.8	10.0	19.5	178.2	279.1	53.9
2005/06	59.1	4.8	282.3	9.4	20.0	175.4	278.9	46.8
2006/07	57.0	4.7	265.7	13.2	18.5	173.1	276.8	30.4
2007/08	57.5	4.5	259.5	27.1	16.9	174.1	274.2	25.8
2008/09	60.9	5.2	316.8	10.8	31.1	176.6	281.8	40.6
2009/10	58.9	5.0	297.3	8.2	25.3	172.3	278.0	42.8
2010/11	56.2	5.0	279.5	13.1	29.3	169.4	277.5	28.7
2011/12	56.0	5.1	288.1	14.3	23.3	170.7	278.7	29.1
2012/13	57.3	4.9	279.8	17.1	30.0	164.7	272.3	23.7
2013/14	57.2	5.3	302.8	20.2	40.7	171.8	281.1	25.0
2014/15	57.8	5.6	324.7	13.8	44.4	176.8	287.6	31.4

China: Grain Supply and Demand

Wheat and Coarse Grains Millions of Metric Tons/Hectares

	Area Harvested	Yield	Production	Imports	Exports	Feed Dom.	Domestic Consumption	Ending Stocks
Wheat								
2003/04	22.0	3.9	86.5	3.7	2.8	6.0	104.5	43.3
2004/05	21.6	4.3	92.0	6.7	1.2	4.0	102.0	38.8
2005/06	22.8	4.3	97.4	1.1	1.4	3.5	101.5	34.5
2006/07	23.6	4.6	108.5	0.4	2.8	4.0	102.0	38.6
2007/08	23.7	4.6	109.3	0.0	2.8	8.0	106.0	39.1
2008/09	23.6	4.8	112.5	0.5	0.7	8.0	105.5	45.8
2009/10	24.3	4.7	115.1	1.4	0.9	10.0	107.0	54.4
2010/11	24.3	4.7	115.2	0.9	0.9	13.0	110.5	59.1
2011/12	24.3	4.8	117.4	2.9	1.0	24.0	122.5	55.9
2012/13	24.3	5.0	121.0	3.0	1.0	25.0	125.0	54.0
2013/14	24.1	5.1	121.9	6.8	0.9	21.0	121.5	60.3
2014/15	24.1	5.2	126.0	1.5	1.0	23.0	124.0	62.8
Coarse Grains								
2003/04	27.0	4.6	124.5	1.5	7.7	99.6	138.8	46.0
2004/05	28.0	4.9	138.3	2.1	7.6	100.3	141.1	37.6
2005/06	28.8	5.1	147.8	2.3	3.8	103.5	147.1	36.9
2006/07	31.1	5.1	159.0	1.2	5.5	105.0	153.5	38.0
2007/08	31.9	5.0	159.2	1.2	0.9	106.7	157.9	39.5
2008/09	32.2	5.4	172.4	1.7	0.2	109.1	161.2	52.2
2009/10	33.4	5.1	169.8	3.8	0.2	119.1	173.3	52.3
2010/11	34.6	5.3	183.8	2.7	0.2	128.8	188.4	50.1
2011/12	35.5	5.6	198.6	7.9	0.1	132.0	196.2	60.4
2012/13	37.1	5.7	212.2	5.6	0.1	146.1	209.7	68.4
2013/14	38.4	5.9	225.1	12.4	0.0	161.8	227.6	78.3
2014/15	39.1	5.7	222.2	17.7	0.1	171.2	237.3	80.7
Wheat and Coarse Grains								
2003/04	49.0	4.3	211.0	5.3	10.5	105.6	243.3	89.3
2004/05	49.6	4.6	230.2	8.8	8.8	104.3	243.1	76.4
2005/06	51.6	4.8	245.3	3.4	5.2	107.0	248.6	71.4
2006/07	54.7	4.9	267.4	1.5	8.2	109.0	255.5	76.6
2007/08	55.6	4.8	268.5	1.2	3.7	114.7	263.9	78.6
2008/09	55.8	5.1	284.9	2.1	0.9	117.1	266.7	98.0
2009/10	57.6	4.9	284.9	5.2	1.1	129.1	280.3	106.7
2010/11	58.9	5.1	299.0	3.6	1.1	141.8	298.9	109.2
2011/12	59.8	5.3	316.0	10.9	1.1	156.0	318.7	116.3
2012/13	61.3	5.4	333.2	8.6	1.1	171.1	334.7	122.3
2013/14	62.5	5.6	347.0	19.2	0.9	182.8	349.1	138.5
2014/15	63.2	5.5	348.2	19.2	1.1	194.2	361.3	143.5

Other Europe: Grain Supply and Demand

Wheat and Coarse Grains Millions of Metric Tons/Hectares

	Area Harvested	Yield	Production	Imports	Exports	Feed Dom.	Domestic Consumption	Ending Stocks
Wheat								
2003/04	1.0	2.7	2.8	1.4	0.0	0.6	4.5	0.7
2004/05	1.1	4.3	4.6	1.4	0.3	0.9	5.2	1.3
2005/06	1.0	3.8	3.8	1.4	0.2	0.9	5.1	1.1
2006/07	1.0	3.6	3.5	1.5	0.3	0.7	4.6	1.2
2007/08	1.0	3.8	3.7	1.9	0.5	1.0	4.8	1.5
2008/09	0.9	4.4	4.0	1.7	0.4	1.2	5.1	1.7
2009/10	1.0	3.9	3.8	1.7	0.5	1.1	5.0	1.7
2010/11	0.9	3.7	3.2	1.6	0.6	0.9	4.7	1.2
2011/12	0.9	4.2	3.6	1.9	0.5	1.0	4.9	1.3
2012/13	0.9	4.1	3.5	1.6	0.7	1.0	4.7	1.0
2013/14	0.9	4.5	4.2	1.8	1.3	1.1	4.8	0.9
2014/15	0.9	4.2	3.9	1.9	0.9	1.2	5.0	0.9
Coarse Grains								
2003/04	2.1	3.1	6.6	0.7	0.1	6.9	7.9	0.7
2004/05	2.1	5.0	10.4	0.5	0.6	8.4	9.5	1.5
2005/06	2.1	4.8	10.2	0.6	1.3	8.6	9.8	1.3
2006/07	2.0	4.9	9.9	0.8	0.9	8.6	9.7	1.3
2007/08	2.0	3.4	6.9	0.9	0.1	6.8	7.9	1.1
2008/09	2.1	4.6	9.7	0.6	1.5	7.6	8.7	1.1
2009/10	2.0	4.9	9.7	0.7	1.4	7.5	8.7	1.4
2010/11	2.0	5.0	10.0	0.7	2.0	7.3	8.7	1.5
2011/12	2.1	4.6	9.5	0.8	2.4	7.0	8.4	1.0
2012/13	2.1	3.2	6.6	0.7	0.6	5.9	7.1	0.6
2013/14	2.0	4.5	9.0	0.8	1.8	6.5	7.9	0.8
2014/15	1.9	5.5	10.7	0.9	3.0	6.6	8.0	1.3
Wheat and Coarse Grains								
2003/04	3.1	3.0	9.4	2.0	0.1	7.4	12.4	1.4
2004/05	3.2	4.8	15.1	1.9	0.9	9.3	14.8	2.8
2005/06	3.1	4.5	14.0	2.0	1.4	9.5	14.9	2.4
2006/07	3.0	4.5	13.4	2.3	1.2	9.3	14.3	2.5
2007/08	3.0	3.5	10.6	2.7	0.6	7.8	12.6	2.6
2008/09	3.0	4.6	13.7	2.3	1.9	8.8	13.8	2.8
2009/10	3.0	4.5	13.5	2.4	1.9	8.5	13.7	3.2
2010/11	2.9	4.6	13.2	2.4	2.6	8.1	13.4	2.6
2011/12	2.9	4.5	13.1	2.7	2.9	8.1	13.2	2.4
2012/13	2.9	3.4	10.1	2.4	1.3	6.9	11.8	1.7
2013/14	2.9	4.5	13.1	2.7	3.0	7.7	12.7	1.8
2014/15	2.9	5.1	14.5	2.8	3.9	7.8	13.0	2.2

Former Soviet Union: Grain Supply and Demand
Wheat and Coarse Grains Millions of Metric Tons/Hectares

	Area Harvested	Yield	Production	Imports	Exports	Feed Dom.	Domestic Consumption	Ending Stocks
Wheat								
2008/09	50.6	2.3	115.5	6.6	38.2	25.2	76.5	21.9
2009/10	52.6	2.2	114.0	5.4	37.3	26.5	78.3	25.8
2010/11	45.8	1.8	81.0	5.5	13.9	24.4	75.7	22.7
2011/12	49.7	2.3	115.0	8.0	39.7	28.3	80.0	26.0
2012/13	44.0	1.8	77.8	7.2	25.4	21.5	71.7	13.9
2013/14	47.7	2.2	103.9	7.4	37.1	22.9	73.1	15.0
2014/15	46.6	2.4	112.7	7.6	38.2	24.6	75.9	21.3
Coarse Grains								
2008/09	30.2	2.6	79.2	0.7	17.2	41.5	58.1	9.4
2009/10	27.2	2.5	67.6	0.4	15.0	39.0	55.0	7.4
2010/11	21.9	2.2	47.5	1.2	8.8	28.4	41.8	5.5
2011/12	27.0	2.9	78.6	1.0	24.6	38.6	54.4	6.2
2012/13	27.5	2.5	68.2	0.7	19.9	35.6	50.2	5.0
2013/14	29.4	3.0	87.6	0.7	30.7	40.1	56.0	6.7
2014/15	30.3	3.0	91.5	0.8	30.5	43.9	60.1	8.3

Former Soviet Union: Grain Supply and Demand (Wheat)

Millions of Tons/Hectares

Country Mktg Year	Area Harvested	Yield	Production	MY Imports	MY Exports	Feed and Residual	Total Consumption	Ending Stocks
Former Soviet Union - 12								
Kazakhstan								
2011/12	13.7	1.7	22.7	0.0	11.8	2.6	7.6	6.2
2012/13	12.4	0.8	9.8	0.0	6.3	2.0	6.8	2.9
2013/14	13.0	1.1	13.9	0.0	8.1	2.0	6.8	2.0
2014/15	11.9	1.1	13.0	0.4	6.0	2.0	6.8	2.6
Russia								
2011/12	24.8	2.3	56.2	0.6	21.6	15.5	38.0	10.9
2012/13	21.3	1.8	37.7	1.2	11.3	11.9	33.6	5.0
2013/14	23.4	2.2	52.1	0.8	18.5	12.5	34.1	5.2
2014/15	23.6	2.5	59.1	0.4	20.5	13.0	35.5	8.6
Ukraine								
2011/12	6.7	3.4	22.3	0.1	5.4	6.1	15.0	5.4
2012/13	5.6	2.8	15.8	0.0	7.2	3.1	11.4	2.6
2013/14	6.6	3.4	22.3	0.1	9.8	3.4	11.5	3.7
2014/15	6.3	3.9	24.8	0.1	11.0	4.0	12.0	5.5
Uzbekistan								
2011/12	1.4	4.5	6.3	2.7	0.7	1.6	7.8	1.4
2012/13	1.4	4.8	6.7	1.9	0.4	1.7	8.0	1.6
2013/14	1.4	4.9	6.8	2.2	0.3	1.9	8.4	1.9
2014/15	1.4	5.1	7.2	2.1	0.3	2.2	8.9	2.0
Other Former Soviet Union - 12								
2011/12	3.2	2.3	7.4	4.7	0.2	2.5	11.6	2.2
2012/13	3.2	2.4	7.8	4.1	0.3	2.8	12.0	1.9
2013/14	3.4	2.6	8.8	4.3	0.4	3.1	12.3	2.2
2014/15	3.4	2.6	8.8	4.7	0.4	3.4	12.7	2.7
Total Former Soviet Union - 12								
2011/12	49.7	2.3	115.0	8.0	39.7	28.3	80.0	26.0
2012/13	44.0	1.8	77.8	7.2	25.4	21.5	71.7	13.9
2013/14	47.7	2.2	103.9	7.4	37.1	22.9	73.1	15.0
2014/15	46.6	2.4	112.7	7.6	38.2	24.6	75.9	21.3

Former Soviet Union: Grain Supply and Demand (Barley)

Millions of Tons/Hectares

Country Mktg Year	Area Harvested	Yield	Production	MY Imports	MY Exports	Feed and Residual	Total Consumption	Ending Stocks
Former Soviet Union - 12								
Kazakhstan								
2011/12	1.5	1.7	2.6	0.0	0.7	1.5	1.8	0.2
2012/13	1.6	0.9	1.5	0.0	0.2	1.2	1.4	0.2
2013/14	1.8	1.4	2.5	0.0	0.5	1.7	2.0	0.2
2014/15	1.9	1.3	2.4	0.0	0.5	1.6	1.9	0.2
Russia								
2011/12	7.7	2.2	16.9	0.4	3.5	9.8	14.3	0.8
2012/13	7.6	1.8	14.0	0.3	2.2	7.7	12.1	0.7
2013/14	8.0	1.9	15.4	0.1	2.7	8.2	12.6	1.0
2014/15	8.8	2.3	20.0	0.1	4.7	9.5	14.4	2.0
Ukraine								
2011/12	3.7	2.5	9.1	0.0	2.5	4.7	6.3	1.2
2012/13	3.3	2.1	6.9	0.0	2.1	3.5	5.1	0.9
2013/14	3.2	2.3	7.6	0.0	2.5	3.4	5.1	0.9
2014/15	3.2	3.0	9.5	0.0	4.2	3.3	4.9	1.2
Uzbekistan								
2011/12	0.1	3.2	0.2	0.1	0.0	0.3	0.3	0.0
2012/13	0.1	3.2	0.2	0.0	0.0	0.2	0.3	0.0
2013/14	0.1	3.2	0.2	0.0	0.0	0.2	0.3	0.0
2014/15	0.1	3.2	0.2	0.0	0.0	0.2	0.3	0.0
Other Former Soviet Union - 12								
2011/12	1.3	2.6	3.4	0.2	0.0	2.7	3.5	0.5
2012/13	1.2	2.8	3.3	0.1	0.0	2.7	3.5	0.4
2013/14	1.4	2.5	3.4	0.1	0.0	2.7	3.5	0.4
2014/15	1.4	2.6	3.6	0.2	0.0	2.9	3.7	0.5
Total Former Soviet Union - 12								
2011/12	14.3	2.3	32.2	0.7	6.7	19.0	26.3	2.7
2012/13	13.8	1.9	26.0	0.4	4.6	15.2	22.3	2.2
2013/14	14.5	2.0	29.2	0.3	5.7	16.2	23.5	2.5
2014/15	15.4	2.3	35.8	0.3	9.4	17.5	25.2	4.0

Former Soviet Union: Grain Supply and Demand (Corn)

Millions of Tons/Hectares

Country Mktg Year	Area Harvested	Yield	Production	MY Imports	MY Exports	Feed and Residual	Total Consumption	Ending Stocks
Former Soviet Union - 12								
Kazakhstan								
2011/12	0.1	5.0	0.5	0.0	0.0	0.4	0.5	0.0
2012/13	0.1	5.0	0.5	0.0	0.0	0.4	0.5	0.0
2013/14	0.1	5.3	0.6	0.0	0.0	0.5	0.6	0.0
2014/15	0.1	5.3	0.7	0.0	0.0	0.5	0.6	0.1
Russia								
2011/12	1.6	4.3	7.0	0.0	2.0	4.0	4.7	0.4
2012/13	1.9	4.2	8.2	0.1	1.9	5.6	6.4	0.3
2013/14	2.3	5.0	11.6	0.1	4.2	6.6	7.5	0.3
2014/15	2.6	4.4	11.3	0.1	2.5	7.8	8.8	0.4
Ukraine								
2011/12	3.5	6.4	22.8	0.0	15.2	6.5	7.8	1.1
2012/13	4.4	4.8	20.9	0.0	12.7	6.8	8.1	1.2
2013/14	4.8	6.4	30.9	0.1	20.0	8.5	9.9	2.2
2014/15	4.6	6.2	28.5	0.1	18.0	9.0	10.4	2.3
Uzbekistan								
2011/12	0.0	4.6	0.2	0.0	0.0	0.2	0.2	0.0
2012/13	0.0	3.4	0.1	0.0	0.0	0.1	0.1	0.0
2013/14	0.0	3.4	0.1	0.0	0.0	0.1	0.1	0.0
2014/15	0.0	3.4	0.1	0.0	0.0	0.1	0.1	0.0
Other Former Soviet Union - 12								
2011/12	0.9	4.0	3.7	0.2	0.3	2.9	3.3	1.0
2012/13	1.0	2.7	2.6	0.2	0.4	2.6	3.0	0.5
2013/14	1.0	3.8	3.7	0.3	0.4	3.0	3.4	0.7
2014/15	0.8	3.5	2.9	0.3	0.3	2.8	3.1	0.5
Total Former Soviet Union - 12								
2011/12	6.2	5.5	34.1	0.3	17.5	14.0	16.4	2.4
2012/13	7.4	4.4	32.3	0.3	15.0	15.5	18.1	2.0
2013/14	8.3	5.7	46.9	0.4	24.6	18.7	21.4	3.2
2014/15	8.2	5.3	43.5	0.4	20.8	20.2	23.0	3.4

Wheat Supply and Disappearance: Selected Exporters
Million Metric Tons/Hectares

Country Mktg Year	Area Harvested	Yield	Production	MY Imports	MY Exports	Feed and Residual	Total Consumption	Ending Stocks
Wheat Competitors								
Argentina								
2006/07	6.2	2.6	16.3	0.0	10.7	0.1	5.4	0.6
2007/08	6.6	2.8	18.6	0.0	11.2	0.1	5.7	2.4
2008/09	5.3	2.1	11.0	0.0	6.8	0.0	5.3	1.3
2009/10	4.0	3.0	12.0	0.0	5.1	0.0	5.8	2.3
2010/11	4.8	3.6	17.2	0.0	9.5	0.1	6.0	4.1
2011/12	5.2	3.0	15.5	0.0	12.9	0.1	6.0	0.7
2012/13	3.6	2.6	9.3	0.0	3.6	0.3	6.2	0.3
2013/14	3.5	3.0	10.5	0.0	2.2	0.1	6.1	2.6
2014/15	4.2	3.0	12.5	0.0	5.5	0.3	6.4	3.2
Australia								
2006/07	11.8	0.9	10.8	0.1	8.7	4.5	7.4	4.2
2007/08	12.6	1.1	13.6	0.1	7.5	3.5	6.6	3.7
2008/09	13.5	1.6	21.4	0.1	14.7	4.2	7.4	3.1
2009/10	13.9	1.6	21.8	0.1	14.8	1.9	5.2	5.1
2010/11	13.5	2.0	27.4	0.1	18.6	2.5	5.8	8.2
2011/12	13.9	2.2	29.9	0.1	24.7	3.2	6.5	7.1
2012/13	13.0	1.8	22.9	0.1	18.7	3.4	6.7	4.7
2013/14	13.5	2.0	26.9	0.2	18.6	3.6	7.0	6.2
2014/15	13.8	1.7	24.0	0.2	17.0	3.8	7.2	6.1
Canada								
2006/07	9.7	2.6	25.3	0.3	19.4	4.5	9.0	6.9
2007/08	8.6	2.3	20.1	0.4	16.1	2.2	6.9	4.4
2008/09	10.0	2.9	28.6	0.4	18.9	3.1	7.8	6.6
2009/10	9.7	2.8	27.0	0.4	19.0	2.5	7.2	7.7
2010/11	8.3	2.8	23.3	0.4	16.6	2.7	7.6	7.4
2011/12	8.6	3.0	25.3	0.5	17.4	4.7	9.9	5.9
2012/13	9.5	2.9	27.2	0.5	19.0	4.4	9.6	5.1
2013/14	10.4	3.6	37.5	0.4	23.2	4.9	10.1	9.7
2014/15	9.5	3.1	29.3	0.5	23.5	5.0	10.3	5.6
Total Wheat Competitors								
2006/07	27.7	1.9	52.4	0.4	38.9	9.1	21.7	11.6
2007/08	27.8	1.9	52.3	0.5	34.8	5.8	19.1	10.5
2008/09	28.8	2.1	61.0	0.5	40.4	7.3	20.6	11.0
2009/10	27.5	2.2	60.8	0.5	39.0	4.4	18.2	15.1

Wheat Supply and Disappearance: Selected Exporters (Continued)

Million Metric Tons/Hectares

Country Mktg Year	Area Harvested	Yield	Production	MY Imports	MY Exports	Feed and Residual	Total Consumption	Ending Stocks
2010/11	26.6	2.5	67.9	0.6	44.7	5.3	19.3	19.7
2011/12	27.6	2.6	70.7	0.6	54.9	8.0	22.3	13.7
2012/13	26.1	2.3	59.4	0.6	41.2	8.1	22.5	10.0
2013/14	27.4	2.7	75.0	0.6	44.1	8.6	23.1	18.4
2014/15	27.5	2.4	65.8	0.7	46.0	9.1	23.9	15.0
India								
2006/07	26.4	2.6	69.4	6.7	0.1	2.3	73.5	4.5
2007/08	28.0	2.7	75.8	2.0	0.0	2.5	76.4	5.8
2008/09	28.2	2.8	78.6	0.0	0.0	2.5	70.9	13.4
2009/10	27.8	2.9	80.7	0.2	0.1	2.8	78.2	16.1
2010/11	28.5	2.8	80.8	0.3	0.1	2.9	81.8	15.4
2011/12	29.1	3.0	86.9	0.0	0.9	3.1	81.4	20.0
2012/13	29.9	3.2	94.9	0.0	6.8	3.4	83.8	24.2
2013/14	30.0	3.1	93.5	0.0	6.1	4.8	93.9	17.8
2014/15	31.5	3.0	95.9	0.0	3.5	4.5	93.7	16.5
Turkey								
2006/07	8.6	2.0	17.5	1.7	2.4	0.8	16.7	2.0
2007/08	7.7	2.0	15.5	2.2	1.7	0.8	16.8	1.1
2008/09	7.7	2.2	16.8	3.5	2.2	0.7	16.9	2.2
2009/10	7.8	2.4	18.5	3.2	4.3	0.8	17.1	2.5
2010/11	8.0	2.1	17.0	3.7	3.0	0.8	17.3	2.9
2011/12	7.7	2.4	18.8	3.8	3.7	1.4	18.1	3.8
2012/13	7.8	2.1	16.0	3.6	3.4	0.9	17.7	2.3
2013/14	7.7	2.4	18.8	4.0	4.4	1.0	17.8	2.9
2014/15	7.7	2.0	15.3	5.8	3.8	0.7	17.5	2.6

Corn Supply and Disappearance: Selected Exporters
Million Metric Tons/Hectares

Country Mktg Year	Area Harvested	Yield	Production	MY Imports	MY Exports	Feed and Residual	Total Consumption	Ending Stocks
Argentina								
2006/07	2.8	8.0	22.5	0.0	15.4	4.8	6.7	1.7
2007/08	3.4	6.5	22.0	0.0	14.8	4.9	6.8	2.1
2008/09	2.5	6.2	15.5	0.0	10.3	4.5	6.4	0.9
2009/10	3.0	8.3	25.0	0.0	16.5	5.0	6.9	2.5
2010/11	3.8	6.7	25.2	0.0	16.3	5.3	7.3	4.0
2011/12	3.6	5.8	21.0	0.0	17.1	4.8	7.0	0.9
2012/13	4.0	6.8	27.0	0.0	18.7	5.3	7.9	1.3
2013/14	3.4	7.6	26.0	0.0	17.3	5.8	8.8	1.2
2014/15	3.0	8.1	24.0	0.0	15.0	6.1	9.4	0.8
Brazil								
2006/07	14.0	3.6	51.0	1.4	10.8	34.5	41.0	3.6
2007/08	14.7	4.0	58.6	0.7	7.8	36.0	42.5	12.6
2008/09	14.1	3.6	51.0	1.1	7.1	38.5	45.5	12.1
2009/10	12.9	4.3	56.1	0.4	11.6	40.0	47.0	10.0
2010/11	13.8	4.2	57.4	0.8	8.4	42.5	49.5	10.3
2011/12	15.2	4.8	73.0	0.8	24.3	43.0	50.5	9.2
2012/13	15.8	5.2	81.5	0.9	24.9	44.5	52.5	14.2
2013/14	15.8	5.1	80.0	0.8	21.0	46.0	55.0	19.0
2014/15	15.0	5.0	75.0	0.8	20.5	47.5	56.5	17.8
China								
2006/07	28.5	5.3	151.6	0.0	5.3	104.0	145.0	36.6
2007/08	29.5	5.2	152.3	0.0	0.5	106.0	150.0	38.4
2008/09	29.9	5.6	165.9	0.0	0.2	108.0	153.0	51.2
2009/10	31.2	5.3	164.0	1.3	0.2	118.0	165.0	51.3
2010/11	32.5	5.5	177.2	1.0	0.1	128.0	180.0	49.4
2011/12	33.5	5.7	192.8	5.2	0.1	131.0	188.0	59.3
2012/13	35.0	5.9	205.6	2.7	0.1	144.0	200.0	67.6
2013/14	36.3	6.0	218.5	3.3	0.0	154.0	212.0	77.3
2014/15	37.0	5.8	215.5	3.0	0.1	158.0	216.0	79.7
South Africa								
2006/07	2.9	2.5	7.3	1.1	0.5	4.6	9.0	0.5
2007/08	3.3	4.0	13.2	0.0	2.2	4.8	10.1	1.4
2008/09	2.9	4.3	12.6	0.0	1.7	4.7	10.3	2.0
2009/10	3.3	4.1	13.4	0.0	2.1	4.9	10.6	2.8
2010/11	2.9	3.8	10.9	0.4	2.4	5.0	10.7	1.0
2011/12	3.1	4.1	12.8	0.0	1.8	5.0	10.7	1.3

Corn Supply and Disappearance: Selected Exporters (Continued)

Million Metric Tons/Hectares

Country Mktg Year	Area Harvested	Yield	Production	MY Imports	MY Exports	Feed and Residual	Total Consumption	Ending Stocks
2012/13	3.2	3.8	12.4	0.1	2.1	5.1	11.0	0.7
2013/14	3.1	4.8	15.0	0.0	2.0	5.4	11.5	2.2
2014/15	3.1	3.6	11.3	0.0	0.7	5.2	11.2	1.6
Total Corn Competitors								
2006/07	48.2	4.8	232.4	2.6	31.9	147.9	201.7	42.3
2007/08	50.9	4.8	246.1	0.8	25.3	151.7	209.4	54.5
2008/09	49.4	5.0	245.0	1.2	19.3	155.7	215.2	66.2
2009/10	50.4	5.1	258.5	1.7	30.3	167.9	229.5	66.5
2010/11	52.9	5.1	270.8	2.2	27.3	180.8	247.5	64.7
2011/12	55.5	5.4	299.5	6.0	43.4	183.8	256.2	70.7
2012/13	58.1	5.6	326.5	3.7	45.8	198.9	271.4	83.7
2013/14	58.6	5.8	339.5	4.1	40.3	211.2	287.3	99.7
2014/15	58.1	5.6	325.8	3.8	36.3	216.8	293.1	99.9

Barley Supply and Disappearance: Selected Exporters
Million Metric Tons/Hectares

Country Mktg Year	Area Harvested	Yield	Production	MY Imports	MY Exports	Feed and Residual	Total Consumption	Ending Stocks
Australia								
2006/07	4.2	1.0	4.3	0.0	1.9	2.9	4.0	1.0
2007/08	4.9	1.5	7.2	0.0	3.4	2.1	3.1	1.7
2008/09	5.0	1.6	8.0	0.0	3.2	2.9	4.0	2.4
2009/10	4.4	1.8	7.9	0.0	3.9	3.3	4.5	1.9
2010/11	3.7	2.2	8.0	0.0	4.7	3.0	4.2	1.0
2011/12	3.7	2.2	8.2	0.0	5.4	2.1	3.3	0.5
2012/13	3.6	2.1	7.5	0.0	4.5	1.8	3.0	0.5
2013/14	3.9	2.5	9.7	0.0	6.2	2.0	3.3	0.7
2014/15	3.8	2.1	8.0	0.0	5.0	1.7	3.0	0.6
Canada								
2006/07	3.2	3.0	9.6	0.0	1.2	8.8	10.2	1.5
2007/08	4.0	2.8	10.9	0.1	3.0	6.4	7.8	1.6
2008/09	3.5	3.4	11.8	0.0	1.5	7.6	8.9	3.0
2009/10	2.9	3.3	9.5	0.0	1.3	7.5	8.7	2.5
2010/11	2.4	3.2	7.6	0.0	1.2	6.3	7.5	1.5
2011/12	2.4	3.3	7.9	0.0	1.3	5.7	6.9	1.2
2012/13	2.8	2.9	8.0	0.0	1.4	5.7	6.8	1.0
2013/14	2.7	3.9	10.2	0.0	1.6	6.6	7.7	1.9
2014/15	2.1	3.3	7.1	0.0	1.3	5.5	6.7	1.1
European Union								
2006/07	13.9	4.1	56.4	0.2	3.4	38.9	55.9	5.8
2007/08	13.9	4.2	57.8	0.3	3.8	38.9	54.5	5.7
2008/09	14.6	4.5	65.8	0.3	3.6	41.7	57.3	11.0
2009/10	14.0	4.5	62.4	0.1	1.1	41.7	56.8	15.6
2010/11	12.5	4.3	53.7	0.2	4.9	41.3	56.6	7.9
2011/12	11.9	4.3	51.9	0.5	3.0	35.8	51.2	6.1
2012/13	12.5	4.4	54.9	0.1	4.9	35.5	51.0	5.1
2013/14	12.4	4.8	59.6	0.0	5.7	38.0	53.4	5.6
2014/15	12.4	4.8	59.9	0.1	8.0	36.5	52.2	5.4

Sorghum Supply and Disappearance: Selected Exporters
Million Metric Tons/Hectares

Country Mktg Year	Area Harvested	Yield	Production	MY Imports	MY Exports	Feed and Residual	Total Consumption	Ending Stocks
Argentina								
2006/07	0.6	4.7	2.8	0.0	1.1	1.5	1.7	0.2
2007/08	0.6	4.7	2.9	0.0	1.2	1.0	1.2	0.7
2008/09	0.5	3.7	1.7	0.0	1.1	1.0	1.1	0.2
2009/10	0.8	4.8	3.6	0.0	1.8	1.7	1.9	0.2
2010/11	1.0	4.4	4.4	0.0	1.7	1.7	1.9	1.0
2011/12	1.0	4.2	4.2	0.0	3.1	1.7	1.9	0.2
2012/13	1.1	4.5	4.7	0.0	1.8	2.0	2.3	0.8
2013/14	1.0	4.4	4.4	0.0	1.3	2.3	2.7	1.2
2014/15	0.9	4.7	4.0	0.0	1.4	2.5	2.9	0.9
Australia								
2006/07	0.6	2.1	1.3	0.0	0.1	1.2	1.2	0.0
2007/08	0.9	4.0	3.8	0.0	0.8	2.2	2.2	0.8
2008/09	0.8	3.5	2.7	0.0	1.0	1.8	1.8	0.7
2009/10	0.5	3.0	1.5	0.0	0.3	1.2	1.2	0.7
2010/11	0.6	3.1	1.9	0.0	0.9	1.4	1.4	0.4
2011/12	0.7	3.4	2.2	0.0	1.3	1.1	1.1	0.2
2012/13	0.6	3.4	2.2	0.0	1.2	1.1	1.1	0.2
2013/14	0.5	2.2	1.1	0.0	0.4	0.8	0.8	0.1
2014/15	0.7	3.0	2.0	0.0	0.8	1.2	1.2	0.1

U.S. Grains Supply and Distribution: Wheat, Corn, Sorghum, Barley, Oats, Rye, and Rice

Thousand Metric Tons/Hectares

	Area Harvested	Yield	Rough Production	Production	Imports	TY Imports	Exports	TY Exports	Feed Dom. Consumption	Domestic Consumption	Ending Stocks
Wheat											
2012/13	19,732	3	nr	61,298	3,341	3,442	27,544	27,734	9,900	37,768	19,538
2013/14	18,345	3	nr	58,105	4,588	4,767	32,012	31,497	6,064	34,154	16,065
2014/15	18,770	3	nr	55,129	3,946	4,100	23,950	24,000	4,354	32,564	18,626
Corn											
2012/13	35,356	8	nr	273,192	4,063	4,265	18,545	18,262	109,603	262,973	20,859
2013/14	35,390	10	nr	351,272	909	727	48,703	50,707	127,915	293,045	31,292
2014/15	33,644	11	nr	361,091	635	650	45,722	45,500	133,356	300,877	46,419
Sorghum											
2012/13	2,021	3	nr	6,293	243	243	1,938	2,136	2,377	4,796	385
2013/14	2,665	4	nr	9,966	2	3	5,380	5,843	2,331	4,109	864
2014/15	2,590	4	nr	10,988	8	7	8,890	9,000	2,159	2,505	465
Barley											
2012/13	1,325	4	nr	4,768	507	431	193	163	1,441	4,638	1,750
2013/14	1,230	4	nr	4,719	408	522	311	336	1,409	4,775	1,791
2014/15	989	4	nr	3,849	501	500	261	250	871	4,177	1,703
Oats											
2012/13	407	2	nr	892	1,601	1,341	20	18	1,640	2,743	527
2013/14	408	2	nr	938	1,676	1,861	23	28	1,671	2,759	359
2014/15	416	2	nr	1,011	1,775	1,750	29	30	1,514	2,631	485
Rye											
2012/13	101	2	nr	166	228	221	8	7	148	387	10
2013/14	113	2	nr	194	234	204	7	6	184	424	7
2014/15	104	2	nr	183	229	200	7	5	160	402	10
Rice, Milled											
2012/13	1,084	8	9,069	6,348	669	675	3,385	3,293	nr	3,779	1,156
2013/14	999	9	8,615	6,117	733	754	2,985	3,042	nr	3,996	1,025
2014/15	1,181	8	10,026	7,068	746	700	3,358	3,450	nr	4,126	1,355

Notes: Wheat Trade Year (TY) statistics are on July/June years. Barley, corn, sorghum, rye and oats Trade Year (TY) statistics are on Oct/Sept years. Rice Trade Year (TY) statistics are for the subsequent calendar year; 'Imports' and 'Exports' columns contain data on the local marketing year: wheat, barley, oats and rye are June/May; corn and sorghum are Sept/Aug; rice is Aug/July.

Total Wheat and Coarse Grains: Supply and Demand

Millions of Metric Tons/Hectares

	Area Harvested	Yield	Production	TY Exports	Feed Dom.	Domestic Consumpti	Ending Stocks
Wheat and Coarse Grains							
1985/86	570.5	2.3	1,328.5	165.2	614.5	1,247.9	420.6
1986/87	565.2	2.4	1,347.9	174.7	645.6	1,299.4	469.2
1987/88	544.3	2.4	1,285.9	202.2	656.5	1,329.8	423.1
1988/89	541.9	2.2	1,218.1	203.3	619.4	1,302.0	339.3
1989/90	548.2	2.4	1,327.4	208.9	644.4	1,346.2	320.5
1990/91	545.7	2.6	1,417.7	190.1	668.7	1,369.5	368.7
1991/92	543.3	2.5	1,355.7	207.5	651.4	1,364.9	359.5
1992/93	545.7	2.6	1,431.6	205.2	663.0	1,389.1	399.2
1993/94	535.9	2.5	1,356.1	188.2	655.7	1,389.3	366.1
1994/95	534.0	2.6	1,392.5	200.1	668.9	1,395.8	362.7
1995/96	527.1	2.5	1,338.5	187.5	640.1	1,381.9	319.4
1996/97	546.0	2.7	1,490.3	198.3	672.9	1,442.6	367.1
1997/98	535.2	2.8	1,491.6	190.3	683.1	1,444.0	414.6
1998/99	520.3	2.8	1,481.8	198.7	682.8	1,448.2	448.2
1999/00	506.2	2.9	1,465.3	214.0	688.3	1,468.0	445.0
2000/01	509.4	2.8	1,447.3	205.0	698.4	1,472.4	419.9
2001/02	511.8	2.9	1,481.0	208.4	711.3	1,496.1	404.9
2002/03	502.6	2.9	1,444.4	209.3	709.2	1,506.1	343.1
2003/04	510.8	2.9	1,472.4	206.0	715.6	1,535.7	279.8
2004/05	514.1	3.2	1,642.6	214.5	753.8	1,585.5	336.8
2005/06	516.4	3.1	1,599.9	222.6	755.4	1,617.1	319.7
2006/07	516.9	3.1	1,584.9	230.0	746.6	1,629.9	274.7
2007/08	533.8	3.2	1,692.5	244.9	759.9	1,674.5	292.7
2008/09	538.9	3.3	1,792.3	253.6	771.7	1,723.5	361.5
2009/10	533.1	3.4	1,804.2	254.2	778.6	1,767.8	397.9
2010/11	522.7	3.3	1,748.6	250.2	770.2	1,783.0	363.5
2011/12	538.2	3.4	1,851.6	287.2	803.5	1,852.1	363.0
2012/13	532.9	3.4	1,794.9	279.2	805.8	1,815.9	342.0
2013/14	543.6	3.7	1,996.2	326.5	867.3	1,944.0	394.2
2014/15	545.2	3.7	2,006.7	319.1	901.4	1,981.0	420.0

Notes: Wheat and coarse grains trade data are on July/June years through 1975/76. From 1976/77 to the present, coarse grains data are on an Oct/Sept trade year.

World Wheat and Coarse Grains: Supply and Demand

Millions of Metric Tons/Hectares

	Area Harvested	Yield	Production	TY Exports	Feed Dom.	Domestic Consumpti	Ending Stocks
Wheat							
1992/93	222.1	2.5	562.6	113.2	111.6	547.7	177.9
1993/94	221.0	2.5	558.5	101.7	109.6	553.0	183.4
1994/95	213.3	2.5	523.0	101.5	101.4	542.1	164.2
1995/96	216.7	2.5	537.5	99.2	95.2	546.1	155.7
1996/97	227.1	2.6	581.4	104.0	99.6	573.4	163.6
1997/98	226.4	2.7	610.2	104.5	103.6	576.4	197.5
1998/99	219.2	2.7	590.4	102.0	106.9	578.2	209.7
1999/00	212.5	2.8	586.8	111.9	102.7	585.2	211.3
2000/01	215.6	2.7	583.3	102.2	109.1	586.9	207.8
2001/02	214.5	2.7	583.8	108.0	109.7	586.3	205.2
2002/03	213.4	2.7	569.6	106.6	113.7	604.0	170.8
2003/04	207.6	2.7	555.3	103.6	99.6	589.3	136.8
2004/05	215.8	2.9	626.7	113.3	108.5	605.9	157.5
2005/06	217.6	2.8	618.9	114.2	115.5	621.7	154.7
2006/07	211.6	2.8	596.5	115.4	110.8	616.5	134.8
2007/08	217.1	2.8	612.7	116.2	102.5	617.7	129.7
2008/09	224.2	3.1	683.9	143.2	122.5	644.3	169.3
2009/10	225.6	3.0	686.8	135.4	121.0	654.2	201.9
2010/11	216.8	3.0	649.7	134.1	114.9	653.6	198.0
2011/12	220.8	3.2	696.0	153.8	146.6	697.2	196.8
2012/13	216.4	3.0	658.7	147.1	137.0	680.0	175.6
2013/14	221.2	3.2	716.8	162.2	131.7	705.8	186.6
2014/15	223.5	3.3	726.5	160.9	139.4	715.8	197.2
Coarse Grains							
1992/93	323.6	2.7	868.9	91.9	551.4	841.4	221.3
1993/94	314.9	2.5	797.7	86.5	546.1	836.3	182.7
1994/95	320.7	2.7	869.5	98.6	567.6	853.7	198.5
1995/96	310.3	2.6	801.0	88.3	544.9	835.8	163.7
1996/97	318.8	2.9	908.9	94.3	573.3	869.2	203.4
1997/98	308.8	2.9	881.3	85.8	579.5	867.7	217.1
1998/99	301.1	3.0	891.3	96.7	575.9	870.0	238.5
1999/00	293.7	3.0	878.5	102.1	585.5	882.8	233.6
2000/01	293.8	2.9	864.0	102.8	589.3	885.5	212.2
2001/02	297.4	3.0	897.2	100.4	601.6	909.7	199.6
2002/03	289.1	3.0	874.8	102.7	595.5	902.1	172.3
2003/04	303.1	3.0	917.1	102.3	616.0	946.4	143.0
2004/05	298.3	3.4	1,015.9	101.2	645.4	979.6	179.3
2005/06	298.7	3.3	981.1	108.4	639.9	995.4	165.0
2006/07	305.3	3.2	988.4	114.5	635.8	1,013.5	139.9
2007/08	316.7	3.4	1,079.9	128.7	657.4	1,056.8	163.0
2008/09	314.7	3.5	1,108.4	110.4	649.1	1,079.3	192.2
2009/10	307.5	3.6	1,117.4	118.8	657.7	1,113.6	196.0
2010/11	306.0	3.6	1,098.9	116.0	655.3	1,129.5	165.4
2011/12	317.4	3.6	1,155.7	133.4	656.8	1,154.9	166.2
2012/13	316.5	3.6	1,136.2	132.2	668.8	1,135.9	166.5
2013/14	322.5	4.0	1,279.4	164.2	735.6	1,238.2	207.7
2014/15	321.7	4.0	1,280.3	158.2	762.0	1,265.2	222.8

Notes: Wheat and coarse grains trade data are on July/June years through 1975/76. From 1976/77 to the present, coarse grains data are on an Oct/Sept trade year.

World Corn and Barley: Supply and Demand

Millions of Metric Tons/Hectares

	Area Harvested	Yield	Production	TY Exports	Feed Dom.	Domestic Consumption	Ending Stocks
Corn							
1992/93	133.1	4.0	535.6	62.6	348.7	512.1	162.7
1993/94	130.7	3.6	475.8	57.4	342.0	509.0	129.4
1994/95	135.2	4.1	559.3	71.9	371.6	535.4	153.3
1995/96	135.0	3.8	516.4	64.8	365.3	536.4	133.3
1996/97	141.5	4.2	592.8	66.6	387.9	559.8	166.3
1997/98	136.3	4.2	574.4	63.1	400.6	573.5	167.2
1998/99	138.9	4.4	605.8	68.7	404.3	581.6	191.4
1999/00	139.0	4.4	608.4	72.0	422.5	605.4	194.4
2000/01	137.1	4.3	591.8	75.9	427.4	610.9	175.3
2001/02	137.3	4.4	601.8	72.7	436.4	625.6	151.5
2002/03	137.4	4.4	603.9	76.8	433.4	628.6	126.8
2003/04	141.7	4.4	627.4	79.0	445.7	649.7	104.6
2004/05	145.4	4.9	716.8	76.0	475.8	690.3	131.1
2005/06	145.4	4.8	700.7	82.5	478.9	708.3	123.5
2006/07	150.3	4.8	716.6	91.3	479.5	730.7	109.4
2007/08	160.4	5.0	795.5	98.2	499.1	775.0	129.9
2008/09	158.7	5.0	799.7	83.6	481.3	784.3	145.3
2009/10	158.4	5.2	824.9	92.7	490.5	826.1	144.2
2010/11	164.6	5.1	835.3	91.7	501.9	851.9	127.6
2011/12	172.0	5.2	888.1	103.7	506.3	883.5	132.2
2012/13	177.4	4.9	868.0	100.5	517.9	864.7	135.4
2013/14	181.4	5.5	988.7	129.7	573.1	953.3	170.8
2014/15	177.8	5.6	991.9	120.0	596.1	974.3	188.5
Barley							
1992/93	72.6	2.3	166.3	16.4	119.0	165.6	35.0
1993/94	73.2	2.3	169.0	18.8	123.8	169.1	34.9
1994/95	72.2	2.2	160.7	15.3	120.9	165.6	30.0
1995/96	66.4	2.1	141.2	13.4	107.8	150.7	20.5
1996/97	64.3	2.4	153.2	17.9	106.3	149.5	24.1
1997/98	63.8	2.4	153.9	12.8	104.1	145.8	32.2
1998/99	56.6	2.4	136.0	17.8	99.5	139.3	29.0
1999/00	52.1	2.4	127.4	17.8	94.0	132.5	23.9
2000/01	52.9	2.5	133.0	16.3	94.6	134.3	22.6
2001/02	55.7	2.6	143.4	17.2	95.5	136.8	29.2
2002/03	54.8	2.4	134.2	16.3	94.7	135.8	27.5
2003/04	58.4	2.4	142.7	14.8	103.1	146.8	23.5
2004/05	57.5	2.6	152.1	17.0	100.0	142.5	33.1
2005/06	55.3	2.5	136.2	17.4	97.4	141.0	28.3
2006/07	56.4	2.4	137.0	14.6	98.5	143.8	21.5
2007/08	55.9	2.4	133.0	18.5	91.1	134.0	20.6
2008/09	55.2	2.8	155.1	18.2	100.4	144.1	31.6
2009/10	54.4	2.8	151.1	17.3	101.4	145.3	37.4
2010/11	47.2	2.6	123.2	15.2	91.3	136.3	24.3
2011/12	49.4	2.7	133.5	21.4	91.7	135.2	22.7
2012/13	50.2	2.6	129.8	22.1	89.0	131.7	20.8
2013/14	50.7	2.9	145.5	23.9	97.1	141.2	25.0
2014/15	49.8	2.8	140.8	23.7	95.8	142.4	23.3

Notes: Coarse grains trade data are on July/June years through 1975/76. From 1976/77 to the present, coarse grains data are on an Oct/Sept trade year.

World Rice: Supply and Demand

Millions of Metric Tons/Hectares

	Area Harvested	Yield	Rough Production	Production	TY Exports	Domestic Consumption	Ending Stocks
Rice, Milled							
1985/86	144.7	3.2	467.3	318.0	11.8	308.0	97.7
1986/87	144.8	3.2	464.6	316.1	12.9	310.4	103.3
1987/88	141.4	3.3	464.8	315.1	11.4	313.1	105.3
1988/89	146.6	3.3	490.8	332.1	14.0	325.7	111.7
1989/90	147.8	3.5	510.3	345.2	11.7	336.3	120.6
1990/91	147.0	3.5	519.4	351.4	12.3	345.3	126.7
1991/92	147.5	3.5	522.8	353.2	14.4	353.2	126.7
1992/93	146.5	3.6	524.2	354.0	14.9	357.5	123.2
1993/94	145.3	3.6	526.1	354.7	16.6	358.9	119.0
1994/95	147.3	3.7	539.9	364.1	20.8	365.5	117.6
1995/96	148.4	3.7	547.3	368.8	19.7	368.3	118.1
1996/97	150.1	3.8	565.3	381.4	18.9	379.2	120.3
1997/98	151.7	3.8	575.2	387.4	27.6	380.0	127.7
1998/99	153.1	3.8	587.0	394.9	24.8	388.6	134.0
1999/00	155.9	3.9	608.6	409.2	22.8	400.1	143.1
2000/01	152.4	3.9	594.1	399.3	24.3	395.6	146.7
2001/02	151.3	3.9	594.3	399.5	27.9	413.3	132.9
2002/03	146.9	3.8	563.1	378.2	27.6	408.1	103.0
2003/04	149.3	3.9	585.1	392.3	27.3	413.7	81.7
2004/05	151.8	3.9	596.6	400.9	28.9	408.6	74.0
2005/06	154.0	4.0	622.3	417.9	29.0	415.4	76.4
2006/07	154.6	4.0	625.6	420.5	31.8	421.6	75.3
2007/08	154.7	4.2	642.5	432.9	29.5	427.3	80.9
2008/09	158.1	4.2	668.3	449.1	29.4	437.5	92.5
2009/10	155.7	4.2	656.5	440.9	31.8	438.7	94.7
2010/11	158.2	4.2	671.4	450.0	36.5	444.9	99.8
2011/12	160.4	4.3	696.2	467.0	39.9	460.0	106.8
2012/13	158.3	4.4	703.7	471.9	39.5	468.5	110.2
2013/14	161.0	4.4	711.1	476.9	43.1	480.1	107.0
2014/15	159.4	4.4	707.5	474.6	42.3	483.0	98.6

Notes: Stocks, exports and consumption are expressed on a milled basis in marketing years.

ENDNOTES TO GRAIN: WORLD MARKETS AND TRADE

REGIONAL TABLES

North America: Canada, Mexico, the United States.

Central America: Belize, Costa Rica, El Salvador, Guatemala, Honduras, Nicaragua, Panama.

Caribbean: Anguilla, Antigua and Barbuda, Aruba, Bahamas, Barbados, Bermuda, British Virgin Islands, Cayman Islands, Cuba, Dominica, Dominican Republic, French West Indies, Grenada, Guadeloupe, Haiti, Jamaica and Dep, Leeward-Windward Islands, Martinique, Montserrat, Netherlands Antilles, Puerto Rico, Kitts and Nevis, St. Lucia, St. Vincent and the Grenadines, Trinidad and Tobago, Turks and Caicos Islands, Virgin Islands of the U.S.

South America: Argentina, Bolivia, Brazil, Chile, Colombia, Ecuador, Falkland Islands (Islas Malvinas), French Guiana, Guyana, Paraguay, Peru, Suriname, Uruguay, Venezuela.

EU: Austria, Belgium/Luxembourg, Bulgaria, Croatia, Cyprus, Czech Republic, Denmark, Estonia, Finland, France, Germany, Greece, Hungary, Ireland, Italy, Latvia, Lithuania, Malta, Netherlands, Poland, Portugal, Romania, Slovakia, Slovenia, Spain, Sweden, United Kingdom.

Other Europe: Albania, Azores, Bosnia and Herzegovina, Former Yugoslavia, Gibraltar, Iceland, Macedonia, Montenegro, Norway, Serbia, Switzerland.

Former Soviet Union: Armenia, Azerbaijan, Belarus, Georgia, Kazakhstan, Kyrgyzstan, Moldova, Russia, Tajikistan, Turkmenistan, Ukraine, Uzbekistan.

Middle East: Bahrain, Iran, Iraq, Israel, Jordan, Kuwait, Lebanon, Oman, Qatar, Saudi Arabia, Syria, Turkey, United Arab Emirates, Yemen.

North Africa: Algeria, Egypt, Libya, Morocco, Tunisia.

Sub-Saharan Africa: all African countries except North Africa.

East Asia: China, Hong Kong, Japan, South Korea, North Korea, Macau, Mongolia, Taiwan.

South Asia: Afghanistan, Bangladesh, Bhutan, India, Nepal, Pakistan, Sri Lanka, Maldives.

Southeast Asia: Brunei, Burma, Cambodia, Indonesia, Laos, Malaysia, Philippines, Singapore, Thailand, Vietnam.

Oceania: Australia, Fiji, New Zealand, Papua New Guinea.

OTHER NOTES

Local Marketing Years (LMY): LMY refers to the 12-month period at the onset of the main harvest, when the crop is marketed (i.e., consumed, traded, or stored). The year first listed begins a country's LMY for that commodity (2014/15 starts in 2014); except for summer grains in certain Southern Hemisphere countries and for rice in selected countries, where the second year begins the LMY (2014/15 starts in 2015). Key exporter LMY's are:

Wheat	Corn	Barley	Sorghum
Argentina (Dec/Nov)	Argentina (Mar/Feb)	Australia (Nov/Oct)	Argentina (Mar/Feb)
Australia (Oct/Sep)	Brazil (Mar/Feb)	Canada (Aug/Jul)	Australia (Mar/Feb)
Canada (Aug/Jul)	China (Oct/Sep)	European Union (Jul/Jun)	United States (Sep/Aug)
China (Jul/Jun)	South Africa (May/Apr)	Russia (Jul/Jun)	
European Union (Jul/Jun)	United States (Sep/Aug)	Ukraine (Jul/Jun)	
India (Apr/Mar)		United States (Jun/May)	
Kazakhstan (Jul/Jun)			
Russia (Jul/Jun)			
Turkey (Jun/May)			
Ukraine (Jul/Jun)			
United States (Jun/May)			

For a complete list of local marketing years, please see the FAS website (<http://www.fas.usda.gov/psdonline/psdAvailability.aspx>).

Stocks: Unless otherwise stated, stock data are based on an aggregate of differing local marketing years and should not be construed as representing world stock levels at a fixed point in time.

Consumption: World totals for consumption reflect total utilization, including food, seed, industrial, feed, and waste; as well as differences in local marketing year imports and local marketing year exports. Consumption statistics for regions and individual countries, however, reflect food, seed, industrial, feed, and waste only.

Trade: All PSD tables are balanced on the different local marketing years. All trade tables contain Trade Year (TY) data which puts all countries on a uniform, 12-month period for analytical comparisons: wheat is July/June; coarse grains, corn, barley, sorghum, oats, and rye are Oct/Sept; and rice is calendar year.

EU Consolidation: The trade figures starting from 1999/00 represent the European Union (Croatia plus the former EU-27) and exclude all intra-trade. For the years 1960/61 through 1998/99, figures are the EU-15 and also exclude all intra-trade. EU-15 member states' data for grains are no longer maintained in the official USDA database. Data for the individual NMS-10, plus Bulgaria, Romania, and Croatia, exists only prior to 1999/00.

Statistics: (1) Wheat trade statistics include wheat, flour, and selected pasta products on a grain equivalent basis. (2) Rice trade statistics include rough, brown, milled, and broken on a milled equivalent basis. (3) Coarse grains statistics include corn, barley, sorghum, oats, rye, millet, and mixed grains but exclude trade in barley malt, millet, and mixed grains.

Unaccounted: This term includes grain in transit, reporting discrepancies in some countries, and trade to countries outside the USDA database.

The Global Commodity Analysis Division, Office of Global Analysis, Foreign Agricultural Service, USDA, Washington, DC 20250, prepared this circular. Information is gathered from official statistics of foreign governments and other foreign source materials, reports of U.S. agricultural attachés and Foreign Service officers, office research, and related information. Further information may be obtained by writing the Division or telephoning (202) 720-3448.

Note: The previous report in this series was Grain: World Markets and Trade March 2015. For further details on world grain production, please see World Agricultural Production April 2015.

This circular is available in its entirety on the Internet via the Foreign Agricultural Service Home Page. The address is: <http://www.fas.usda.gov>

Questions may be directed to the following staff:

Teresa McKeivier	(202) 690-1151	Teresa.McKeivier@fas.usda.gov	Wheat
Andrew Sowell	(202) 720-0262	Andrew.Sowell@fas.usda.gov	Wheat
Yoonhee Macke	(202) 690-4199	Yoonhee.Macke@fas.usda.gov	Rice
Rick O'Meara	(202) 720-4933	Richard.Omeara@fas.usda.gov	Coarse Grains
Lisa Bennett	(202) 720-0929	Lisa.Bennett@fas.usda.gov	Coarse Grains