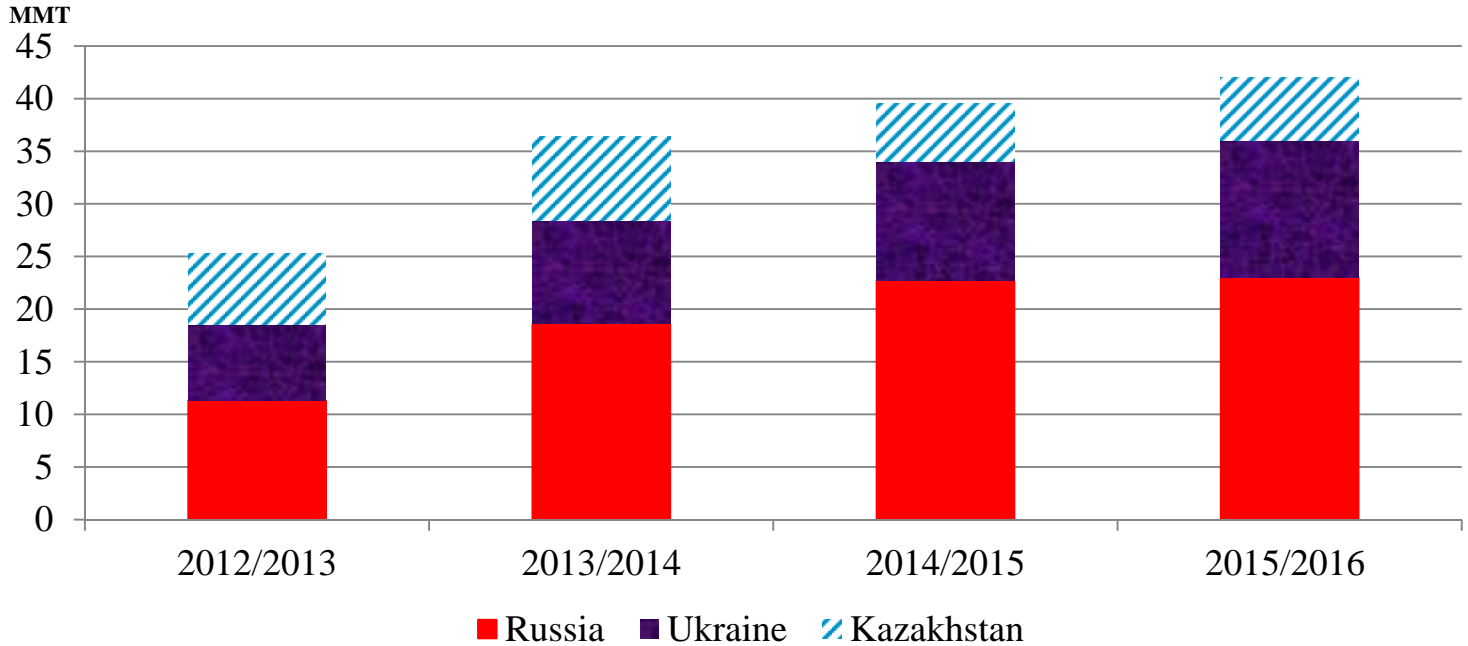




Grain: World Markets and Trade

August 2015

Black Sea Wheat Exports Projected at a Record



Once again, Black Sea countries' (Kazakhstan, Russia, and Ukraine) wheat exports are projected at a record in 2015/16. Russia accounts for the lion's share of trade and is forecast at a record, while Ukraine's exports are the second highest ever. Kazakhstan is up slightly from last year.

Russia's largest markets are in the Middle East and North Africa, particularly Egypt and Turkey. Ukraine's wheat is typically lower quality with a large percentage sold into feed markets in the EU, East Asia, and Southeast Asia. Food-quality wheat is also exported to Bangladesh and countries in North Africa. Kazakhstan's wheat is generally uncompetitive other than to neighboring countries in Iran and Central Asia because it is primarily land locked and transportation costs to ports can be prohibitive.

For 2015/16, production in the Middle East and several countries in North Africa is expected to rebound significantly from last year and import demand is projected to fall as a result. This will likely shift lower-priced Black Sea wheat into other markets. Both Russia and Ukraine have already expanded market share in several traditional U.S. markets such as Mexico and Nigeria. Russian and Ukrainian wheat market share in Nigeria has already grown from 1 to 17 percent in 2 years. Similarly for Mexico, Russia and Ukraine captured 12 percent of the market in 2014/15, compared to zero just 2 years ago. However, The United States is expected to offset these losses with an opportunity to expand exports in Asian and South American markets as a result of tightening supplies in both Argentina and Canada.

For email subscription, click here to register:
<http://www.fas.usda.gov/data/grain-world-markets-and-trade>

TABLE OF CONTENTS

World Markets and Trade: Commentary and Current Data	
Wheat	4
Rice	10
Coarse Grains.....	15
Historical Data Series for Selected Regions and Countries.....	36
Endnotes to Grain: World Markets and Trade.....	55

The Foreign Agricultural Service (FAS) updates its production, supply and distribution (PSD) database for cotton, oilseeds, and grains at 12:00 p.m. on the day the *World Agricultural Supply and Demand Estimates* (WASDE) report is released. This circular is released by 12:15 p.m.

To download the tables in the publication, go to Production, Supply and Distribution Database (PSD Online): (<http://apps.fas.usda.gov/psdonline/psdHome.aspx>), scroll down to Reports, and Click the plus sign [+] next to Grains.

FAS Reports and Databases:

Current *World Markets and Trade* and *World Agricultural Production* Reports:

<http://apps.fas.usda.gov/psdonline/psdDataPublications.aspx>

Archives *World Markets and Trade* and *World Agricultural Production* Reports:

<http://usda.mannlib.cornell.edu/MannUsda/viewTaxonomy.do?taxonomyID=7>

Production, Supply and Distribution Database (PSD Online):

<http://apps.fas.usda.gov/psdonline/psdHome.aspx>

Global Agricultural Trade System (U.S. Exports and Imports):

<http://apps.fas.usda.gov/gats/default.aspx>

Export Sales Report:

<http://apps.fas.usda.gov/esrquery/>

Global Agricultural Information Network (Agricultural Attaché Reports):

<http://gain.fas.usda.gov/Pages/Default.aspx>

Other USDA Reports:

World Agricultural Supply and Demand Estimates (WASDE):

<http://www.usda.gov/oce/commodity/wasde/>

Economic Research Service:

<http://www.ers.usda.gov/topics/crops>

National Agricultural Statistics Service:

<http://www.nass.usda.gov/Publications/>

All Grain Summary Comparison

Marketing Year	Wheat			Rice, Milled			Corn			
	2013/14	2014/15	2015/16	2013/14	2014/15	2015/16	2013/14	2014/15	2015/16	
Production										
United States	(Jun-May)	58.1	55.1	58.1	6.1	7.1	6.5	351.3	361.1	347.6
Other		657.0	670.2	668.4	472.1	469.1	472.2	639.5	645.1	638.0
World Total		715.1	725.3	726.5	478.2	476.2	478.7	990.8	1,006.2	985.6
Domestic Consumption										
United States	(Jun-May)	34.2	31.4	33.7	4.0	4.1	4.1	293.0	301.1	302.9
Other		656.9	672.7	679.9	474.1	478.2	481.5	652.8	672.2	683.3
World Total		691.1	704.1	713.6	478.1	482.3	485.6	945.8	973.3	986.2
Ending Stocks										
United States	(Jun-May)	16.1	20.5	23.1	1.0	1.5	1.3	31.3	45.0	43.5
Other		177.2	189.2	198.4	106.4	98.5	89.5	143.7	152.4	151.6
World Total		193.3	209.7	221.5	107.4	100.0	90.8	175.0	197.4	195.1
TY Imports										
United States	(Jun-May)	4.8	4.0	3.4	0.8	0.8	0.8	0.7	0.8	0.8
Other		155.4	155.1	151.1	40.2	39.6	38.9	124.4	117.5	121.0
World Total		160.2	159.1	154.5	41.0	40.4	39.7	125.1	118.3	121.8
TY Exports										
United States	(Jun-May)	31.5	22.8	25.5	3.0	3.4	3.5	50.7	46.0	47.0
Other		130.9	138.4	131.3	40.4	39.1	38.8	79.5	79.1	79.8
World Total		162.4	161.2	156.8	43.4	42.5	42.3	130.2	125.1	126.8

Note: Consumption in this table has not been adjusted for differences in marketing year imports and exports and therefore differs from global totals shown elsewhere.

Marketing years for U.S. grains are: Wheat (Jun-May), Rice (Aug-Jul), Corn (Sep-Aug).
'Marketing Year' column is germane for U.S. wheat only.

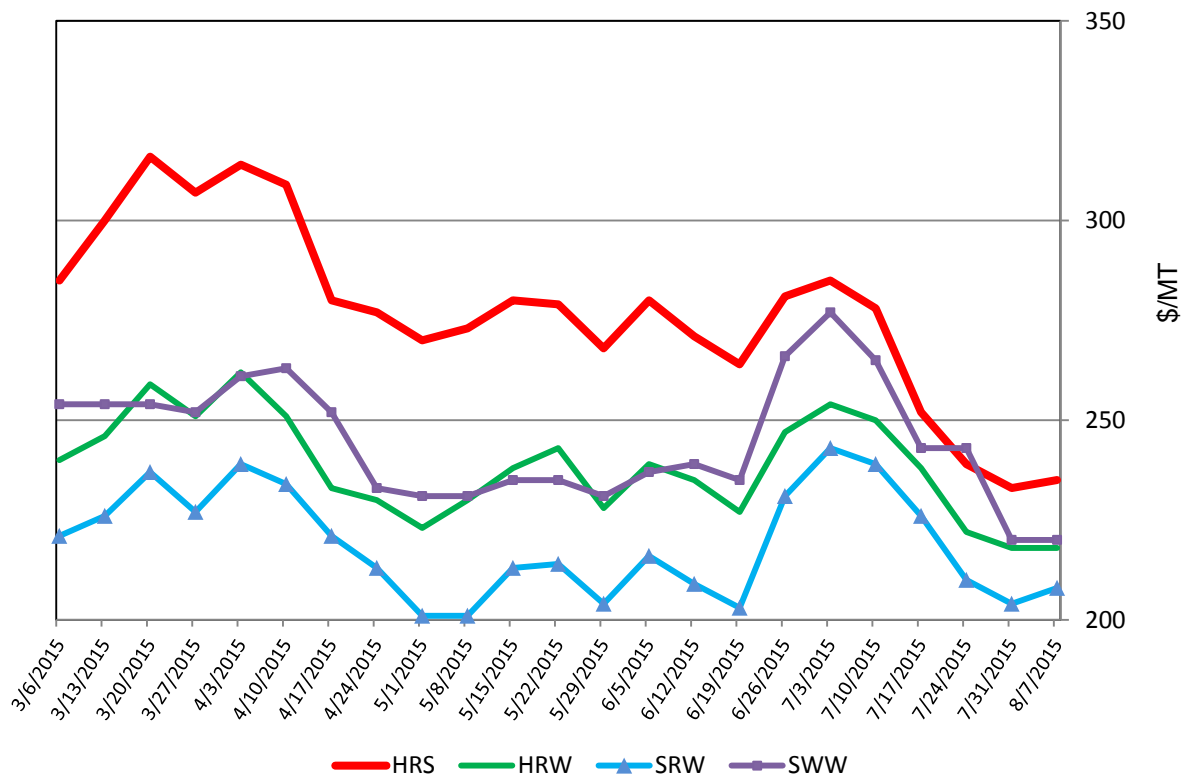
WHEAT: WORLD MARKETS AND TRADE

OVERVIEW

Global production in 2015/16 is raised to a record as larger crops in Kazakhstan, Russia, Turkey, and Ukraine more than offset lower production in Argentina, Canada, and the United States. Global trade is down slightly, highlighted by smaller imports for Iran and Libya, which more than offset increases for Morocco and Turkey. Exports are raised for Russia and Ukraine but cut for the United States and Canada. The season-average farm price is lowered from last month.

U.S. PRICES:

U.S. Weekly FOB Export Bids



Domestic: Prices for all U.S. wheat classes plummeted during the last month based on abundant competitor supplies, harvest pressure, and a strengthening dollar. Soft White Wheat (SWW) plunged \$57/ton to \$220. Hard Red Spring (HRS) fell \$50/ton to \$235, further pressured by prospects for a bumper crop. Hard Red Winter (HRW) dropped \$36/ton to \$218, while Soft Red Winter (SRW) was \$35/ton lower at \$208.

TRADE CHANGES IN 2015/16

Selected Exporters

- **Canada** is lowered 1.5 million tons to 18.5 million on tightening exportable supplies.
- **Russia** is boosted 1.0 million tons to a record 23.0 million with a larger crop.
- **Ukraine** is up 500,000 tons to 13.0 million based on higher production.
- **United States** is down 750,000 tons to 25.5 million based on intensified competition from Russia and Ukraine.

Selected Importers

- **Iran** is cut 2.0 million tons to 2.5 million based on a recently established import duty.
- **Libya** is down 300,000 tons to 1.4 million as domestic conflict is expected to continue to make trade difficult.
- **Morocco** is raised 1.0 million tons to 2.8 million with the expectation that imports will pick up in the second half of the year after import duties are removed.
- **Turkey** is up 300,000 tons to 3.8 million as import demand is expected to remain strong despite a record crop.
- **United States** is lowered 150,000 tons to 3.4 million based on a large domestic spring wheat crop and tighter Canadian supplies.

TRADE CHANGES IN 2014/15

Selected Exporters- based on trade data

- **Australia** is lowered 902,000 tons to 16.6 million.
 - **Canada** is boosted 648,000 tons to a record 24.8 million.
 - **European Union** is raised 500,000 tons to a record 35.2 million.
 - **Kazakhstan** is cut 498,000 tons to 5.5 million.
 - **Russia** is up 500,000 tons to a record 22.7 million.
-

Selected Importers- based on trade data

- **Iran** is lowered 300,000 tons to 5.2 million.
- **Philippines** is raised 300,000 tons to a record 5.0 million.

World Wheat, Flour, and Products Trade
July/June Year, Thousand Metric Tons

	2011/12	2012/13	2013/14	2014/15	2015/16 Jul	2015/16 Aua
TY Exports						
Argentina	11,951	7,450	1,675	4,200	6,200	6,000
Australia	23,031	21,269	18,339	16,598	18,000	18,000
Canada	17,603	18,584	22,157	24,848	20,000	18,500
European Union	16,728	22,786	32,033	35,200	31,000	31,000
Kazakhstan	11,069	6,801	8,000	5,502	6,000	6,000
Mexico	790	729	1,322	1,300	1,300	1,100
Russia	21,627	11,289	18,568	22,700	22,000	23,000
Turkey	3,678	3,583	4,293	4,000	3,800	4,000
Ukraine	5,436	7,190	9,755	11,300	12,500	13,000
Uruguay	1,782	811	1,345	900	1,300	1,100
Others	11,928	18,982	13,371	11,891	9,612	9,637
Subtotal	125,623	119,474	130,858	138,439	131,712	131,337
United States	28,142	27,734	31,518	22,752	26,250	25,500
World Total	153,765	147,208	162,376	161,191	157,962	156,837
TY Imports						
Afghanistan	2,200	1,600	2,050	2,000	2,000	2,000
Algeria	6,500	6,484	7,484	7,100	7,700	7,700
Bangladesh	2,039	2,725	3,354	3,800	3,800	3,600
Brazil	7,053	7,547	7,061	5,869	6,500	6,500
China	2,933	2,960	6,773	1,926	2,000	2,200
Egypt	11,650	8,300	10,170	11,200	11,500	11,500
European Union	7,362	5,276	3,974	6,000	6,500	6,500
Indonesia	6,457	7,146	7,392	7,600	8,100	8,100
Iran	2,400	5,600	6,600	5,200	4,500	2,500
Iraq	3,784	3,948	3,246	2,300	3,200	3,200
Japan	6,354	6,598	6,123	5,878	5,800	5,800
Korea, South	5,188	5,439	4,288	3,942	4,000	4,000
Mexico	5,020	3,823	4,636	4,500	4,400	4,400
Morocco	3,671	3,825	3,892	4,100	1,800	2,800
Nigeria	3,903	4,138	4,580	4,200	4,500	4,400
Philippines	4,075	3,645	3,482	5,000	4,400	4,500
Saudi Arabia	2,904	1,921	3,429	3,550	3,800	3,800
South Africa	1,542	1,558	1,800	1,700	1,850	1,850
Sudan	2,360	1,793	2,664	2,600	2,800	2,800
Thailand	2,646	1,845	1,693	3,400	2,400	2,600
Tunisia	1,473	1,523	1,634	1,550	1,900	1,900
Turkey	4,413	3,312	4,154	6,000	3,500	3,800
Uzbekistan	2,698	1,863	2,224	2,230	2,100	2,200
Vietnam	2,711	1,671	2,158	2,300	2,300	2,300
Yemen	2,685	3,149	3,425	3,100	3,200	3,200
Others	44,854	43,592	47,140	48,110	47,576	46,971
Subtotal	148,875	141,281	155,426	155,155	152,126	151,121
Unaccounted	1,853	2,451	2,165	2,049	2,336	2,366
United States	3,037	3,476	4,785	3,987	3,500	3,350
World Total	153,765	147,208	162,376	161,191	157,962	156,837

TY=Trade Year, see Endnotes.

World Wheat Production, Consumption, and Stocks
Local Marketing Years, Thousand Metric Tons

	2011/12	2012/13	2013/14	2014/15	2015/16 Jul	2015/16 Aua
Production						
Argentina	15,500	9,300	10,500	12,500	11,500	11,100
Australia	29,905	22,856	25,303	23,666	26,000	26,000
Canada	25,288	27,205	37,530	29,300	27,500	26,500
China	117,400	121,023	121,930	126,170	130,000	130,000
Egypt	8,400	8,500	8,250	8,300	8,360	8,360
European Union	138,182	133,949	144,415	156,449	147,875	147,821
India	86,870	94,880	93,510	95,850	90,000	90,000
Iran	12,400	13,800	14,500	13,000	14,000	14,000
Kazakhstan	22,732	9,841	13,941	12,996	13,500	14,000
Morocco	5,800	3,870	7,000	5,100	7,800	8,000
Pakistan	25,000	23,300	24,000	25,500	25,000	25,000
Russia	56,240	37,720	52,091	59,080	57,000	60,000
Turkey	18,800	16,000	18,750	15,250	18,500	19,500
Ukraine	22,324	15,761	22,278	24,750	24,000	25,500
Uzbekistan	6,300	6,700	6,800	7,150	7,200	7,200
Others	50,668	52,697	56,209	55,063	55,265	55,431
Subtotal	641,809	597,402	657,007	670,124	663,500	668,412
United States	54,244	61,298	58,105	55,129	58,456	58,133
World Total	696,053	658,700	715,112	725,253	721,956	726,545
Total Consumption						
Algeria	8,950	9,450	9,850	10,050	10,250	10,250
Brazil	11,200	10,900	11,400	11,100	11,600	11,500
Canada	9,852	9,615	9,407	11,330	9,000	9,000
China	122,500	125,000	116,500	118,000	116,500	116,500
Egypt	18,600	18,700	18,500	19,100	19,600	19,600
European Union	127,234	119,250	117,200	123,900	124,000	124,850
India	81,404	83,822	93,852	93,130	96,000	95,800
Indonesia	6,250	6,950	7,265	7,465	7,800	7,800
Iran	15,200	16,000	17,000	17,500	18,000	18,000
Morocco	8,800	8,300	9,000	9,000	9,600	9,800
Pakistan	23,100	23,900	24,100	24,500	24,600	24,600
Russia	38,000	33,550	34,100	35,500	36,000	36,500
Turkey	18,100	17,650	17,750	17,500	17,750	18,000
Ukraine	14,950	11,400	11,500	12,000	12,200	12,700
Uzbekistan	7,800	8,000	8,400	8,900	9,100	9,100
Others	145,458	147,028	151,128	153,768	155,678	155,879
Subtotal	665,571	641,572	664,617	677,549	680,481	681,017
United States	31,962	37,768	34,168	31,394	33,719	33,720
World Total	697,533	679,340	698,785	708,943	714,200	714,737
Ending Stocks						
China	55,946	53,960	65,274	74,567	88,794	89,267
European Union	13,522	10,711	9,867	13,216	14,095	11,687
India	19,950	24,200	17,830	17,200	11,900	11,900
Iran	825	5,086	7,221	7,821	7,321	6,321
Morocco	3,305	2,472	4,185	4,135	3,985	4,885
Russia	10,899	4,952	5,175	6,405	6,255	7,255
Ukraine	5,363	2,579	3,670	5,170	4,320	5,020
Others	67,639	53,522	64,060	60,660	60,240	62,006
Subtotal	177,449	157,482	177,282	189,174	196,910	198,341
United States	20,211	19,538	16,065	20,483	22,903	23,124
World Total	197,660	177,020	193,347	209,657	219,813	221,465

Regional Wheat Imports, Production, Consumption, and Stocks

Thousand Metric Tons

	2011/12	2012/13	2013/14	2014/15	Jul 2015/16	Aug 2015/16
TY Imports						
North America	8,554	7,784	9,862	8,972	8,360	8,210
Central America	1,666	1,654	1,833	1,840	1,860	1,795
South America	13,779	14,422	14,831	13,182	14,010	13,765
European Union - 28	7,362	5,276	3,974	6,000	6,500	6,500
Other Europe	1,930	1,703	1,921	1,845	1,910	1,910
Former Soviet Union - 12	8,022	7,228	7,411	7,757	6,890	7,090
Middle East	23,066	24,163	28,341	27,626	24,830	23,375
North Africa	24,855	22,078	25,229	25,275	24,600	25,300
Sub-Saharan Africa	19,176	18,501	20,443	20,680	21,630	21,460
East Asia	16,865	17,352	19,463	14,141	14,135	14,335
South Asia	5,487	5,308	6,733	8,042	8,151	7,751
Southeast Asia	18,019	16,325	17,119	20,590	19,525	19,775
Others	3,131	2,963	3,051	3,192	3,225	3,205
Total	151,912	144,757	160,211	159,142	155,626	154,471
Production						
North America	83,160	91,734	99,012	88,116	89,656	88,333
South America	25,766	18,604	19,881	22,927	22,861	22,461
European Union - 28	138,182	133,949	144,415	156,449	147,875	147,821
Other Europe	3,597	3,431	4,059	3,856	3,932	3,932
Former Soviet Union - 12	114,985	77,802	103,873	112,726	109,875	115,030
Middle East	39,285	36,884	41,722	35,117	39,855	40,855
North Africa	18,366	17,320	19,722	16,900	19,360	19,560
Sub-Saharan Africa	6,231	6,718	7,518	7,692	7,454	7,454
East Asia	118,775	122,490	123,248	127,607	131,367	131,378
South Asia	117,232	126,237	125,710	129,595	123,120	123,120
Oceania	30,288	23,345	25,751	24,067	26,400	26,400
Others	186	186	201	201	201	201
Total	696,053	658,700	715,112	725,253	721,956	726,545
Domestic Consumption						
North America	49,414	54,008	50,225	49,574	49,569	49,720
South America	26,085	26,407	27,251	27,432	27,924	27,689
European Union - 28	127,234	119,250	117,200	123,900	124,000	124,850
Other Europe	4,871	4,721	4,807	4,835	4,885	4,885
Former Soviet Union - 12	79,980	71,725	72,940	75,860	76,435	77,625
Middle East	56,723	56,636	58,745	58,196	59,430	59,925
North Africa	40,927	41,421	42,424	42,675	44,225	44,125
Sub-Saharan Africa	23,275	24,041	26,714	27,549	28,419	28,319
East Asia	137,057	140,072	130,321	130,803	129,365	129,376
South Asia	115,926	121,005	132,045	132,270	135,886	135,786
Southeast Asia	16,665	16,520	16,674	18,930	18,955	19,005
Oceania	7,824	8,111	8,280	8,569	8,700	8,700
Others	3,379	3,366	3,494	3,544	3,604	3,594
Total	689,360	687,283	691,120	704,137	711,397	713,599
Ending Stocks						
North America	26,718	24,865	26,732	25,637	27,751	28,238
South America	4,107	3,839	7,063	7,017	6,968	6,803
European Union - 28	13,522	10,711	9,867	13,216	14,095	11,687
Other Europe	1,458	1,149	1,053	1,245	1,126	1,127
Former Soviet Union - 12	26,006	13,920	15,117	19,085	18,738	21,175
Middle East	12,193	13,798	18,267	18,322	18,659	18,297
North Africa	14,094	11,487	13,550	12,438	11,935	12,548
Sub-Saharan Africa	2,386	2,424	2,840	2,828	2,458	2,638
East Asia	59,235	57,509	68,487	78,099	92,365	92,901
South Asia	25,448	28,173	21,642	22,567	16,682	16,597
Southeast Asia	4,678	3,814	3,482	4,313	3,902	4,303
Oceania	7,443	4,990	4,880	4,464	4,782	4,779
Others	372	341	367	426	352	372
Total	197,660	177,020	193,347	209,657	219,813	221,465

NOTES: Regional definitions appear on last page of this circular. Imports are reported on a trade year basis. All other data are reported using local marketing years.

RICE: WORLD MARKETS AND TRADE

OVERVIEW

For 2015/16, global production is down from last month, but still a record, with declines in Argentina, Cambodia, Iraq, South Korea, Thailand, and the United States. Global trade and stocks are up marginally, while consumption is down slightly. U.S. exports are revised down slightly.

For 2014/15, global production is virtually unchanged this month, while trade is reduced due to lower exports by Argentina and Thailand. U.S. exports are also lowered this month.



Thailand is expected to lose its position as top exporter in 2015 due to stiffer competition from India. Prices for Thai 100B have been higher than comparable Indian rice (5 percent broken) for the past year. While Thai exports to the Philippines and Iraq are substantially larger than a year ago, shipments to Africa, Europe, and Western Hemisphere are 10 to 20 percent smaller. The situation is expected to be short-lived, as exports are currently forecast to rebound in the coming year. However, low reservoir levels and limited availability of irrigation water could impact the upcoming crop and export prospects.

India's exports to nearby markets, Bangladesh, Nepal, and Sri Lanka, have been robust and shipments to markets in Africa and the Middle East are running well ahead of last year's pace. Continued foreign demand has boosted India's prices, and the gap has converged with Thai 100B. However, the pace of India's exports is expected to slow in the coming year as supplies tighten.

SELECTED TRADE CHANGES for 2015

- **Argentina's** exports are cut 160,000 tons to 400,000 because of a slow pace of sales and shipments.
- **Thailand's** exports are reduced 1.0 million tons to 9.0 million reflecting stiffer competition from India in key markets.
- **Brazil's** imports are down 100,000 tons to 500,000 to reflect a slow pace of shipments from Argentina and Uruguay.
- **Sri Lanka's** imports are up 100,000 tons to 350,000 on continued large purchases from India.

SELECTED TRADE CHANGES for 2016

- **Argentina's** exports are cut 100,000 tons to 480,000 on a smaller crop.
- **Cambodia's** exports are cut 200,000 tons to 1.0 million on reduced production.
- **India's** exports are up 500,000 tons to 9.0 million reflecting competitiveness.
- **Vietnam's** exports are boosted 100,000 tons to 7.0 million to partly offset reduced exports by Cambodia.

World Rice Trade
January/December Year, Thousand Metric Tons

	2011/12	2012/13	2013/14	2014/15	2015/16 Jul	2015/16 Aua
TY Exports						
Argentina	608	526	494	400	580	480
Australia	449	460	404	400	300	300
Brazil	1,105	830	850	800	800	800
Burma	1,357	1,163	1,688	2,000	2,200	2,200
Cambodia	900	1,075	1,000	1,100	1,200	1,000
China	267	447	393	400	400	400
Egypt	600	700	600	250	400	400
European Union	194	203	284	250	220	220
Guyana	265	346	500	500	520	520
India	10,250	10,480	10,907	11,000	8,500	9,000
Pakistan	3,399	4,126	3,600	4,000	4,000	4,000
Paraguay	262	365	380	400	500	500
Thailand	6,945	6,722	10,969	9,000	10,200	10,200
Uruguay	1,056	939	957	950	1,000	950
Vietnam	7,717	6,700	6,325	6,700	6,900	7,000
Others	1,276	1,089	1,026	954	921	881
Subtotal	36,650	36,171	40,377	39,104	38,641	38,851
United States	3,298	3,295	2,998	3,400	3,500	3,450
World Total	39,948	39,466	43,375	42,504	42,141	42,301
TY Imports						
Angola	360	430	496	450	450	450
Bangladesh	53	114	1,290	750	850	850
Brazil	732	712	586	500	700	700
Cameroon	450	550	610	525	530	530
China	2,900	3,483	4,168	4,500	4,700	4,700
Cote d'Ivoire	1,265	830	950	950	950	950
Cuba	330	413	377	450	450	500
European Union	1,313	1,375	1,556	1,580	1,550	1,550
Ghana	595	725	590	620	650	650
Indonesia	1,960	650	1,225	1,250	1,100	1,100
Iran	1,500	2,220	1,650	1,700	1,600	1,600
Iraq	1,478	1,294	1,080	1,250	1,300	1,300
Japan	650	690	669	700	700	700
Kenya	400	410	440	450	460	460
Malaysia	1,006	885	989	950	1,000	1,000
Mexico	680	746	658	680	785	785
Mozambique	445	500	500	480	500	500
Nigeria	3,400	2,400	3,200	4,000	3,000	3,000
Philippines	1,500	1,000	1,800	1,800	1,400	1,400
Saudi Arabia	1,193	1,326	1,410	1,460	1,550	1,550
Senegal	1,200	1,075	1,200	1,100	1,100	1,100
South Africa	870	990	910	1,000	1,000	1,000
United Arab Emirates	430	440	450	460	460	460
Venezuela	375	500	480	500	500	500
Vietnam	100	100	300	400	500	500
Others	11,289	11,965	12,651	11,108	11,088	11,088
Subtotal	36,474	35,823	40,235	39,613	38,873	38,923
Unaccounted	2,834	2,968	2,385	2,091	2,468	2,558
United States	640	675	755	800	800	820
World Total	39,948	39,466	43,375	42,504	42,141	42,301

TY=Trade Year, see Endnotes. Note about dates: 2014/15 is calendar year 2015, 2013/14 is calendar year 2014, and so on.

World Rice Production, Consumption, and Stocks
Local Marketing Years, Thousand Metric Tons

	2011/12	2012/13	2013/14	2014/15	2015/16 Jul	2015/16 Aua
Milled Production						
Bangladesh	33,700	33,820	34,390	34,500	35,000	35,000
Brazil	7,888	8,037	8,300	8,500	8,000	8,000
Burma	11,473	11,715	11,957	12,600	12,800	12,800
Cambodia	4,268	4,670	4,725	4,700	4,900	4,700
China	140,700	143,000	142,530	144,500	146,000	146,000
Egypt	4,250	4,675	4,750	4,530	4,600	4,600
India	105,310	105,240	106,540	102,500	104,000	104,000
Indonesia	36,500	36,550	36,300	36,300	36,650	36,650
Japan	7,812	7,923	7,937	7,842	7,900	7,900
Korea, South	4,224	4,006	4,230	4,241	4,100	4,000
Nepal	3,381	3,003	3,361	3,100	3,100	3,100
Pakistan	6,200	5,800	6,700	6,900	6,900	6,900
Philippines	10,710	11,428	11,858	11,880	12,400	12,400
Thailand	20,460	20,200	20,460	18,750	19,000	18,000
Vietnam	27,152	27,537	28,161	28,050	28,200	28,200
Others	37,779	38,731	39,874	40,262	40,215	39,894
Subtotal	461,807	466,335	472,073	469,155	473,765	472,144
United States	5,866	6,348	6,117	7,068	6,573	6,510
World Total	467,673	472,683	478,190	476,223	480,338	478,654
Consumption and Residual						
Bangladesh	34,300	34,500	34,900	35,200	35,600	35,500
Brazil	7,928	7,850	7,900	7,900	7,950	7,950
Burma	10,200	10,400	10,450	10,550	10,600	10,600
Cambodia	3,400	3,550	3,650	3,700	3,700	3,700
China	139,600	144,000	146,300	148,400	151,000	151,000
Egypt	3,620	4,050	4,000	4,000	4,000	4,000
India	93,334	94,031	99,180	99,251	99,500	99,200
Indonesia	38,188	38,127	38,500	38,600	38,650	38,650
Japan	8,396	8,367	8,285	8,313	8,375	8,375
Korea, South	4,880	4,489	4,422	4,450	4,360	4,360
Nepal	3,677	3,353	3,811	3,500	3,500	3,500
Nigeria	5,600	5,300	5,800	6,400	6,000	6,000
Philippines	12,860	12,850	12,850	13,200	13,250	13,250
Thailand	10,400	10,600	10,875	11,700	12,000	12,000
Vietnam	19,650	21,900	22,000	21,900	22,000	22,000
Others	56,912	59,058	61,219	61,097	61,407	61,387
Subtotal	457,466	465,109	477,497	479,452	484,637	483,715
United States	3,492	3,779	3,977	4,126	4,139	4,108
World Total	460,958	468,888	481,474	483,578	488,776	487,823
Ending Stocks						
China	45,023	46,826	46,811	46,911	46,211	46,211
India	25,100	25,440	22,651	15,300	11,600	11,600
Indonesia	7,403	6,476	5,501	4,451	3,551	3,551
Japan	2,735	2,857	3,108	3,262	3,412	3,412
Pakistan	550	500	1,431	1,561	1,631	1,631
Philippines	1,509	1,487	1,695	2,075	2,525	2,525
Thailand	9,330	12,808	11,724	10,074	6,174	6,174
Others	13,909	13,107	13,427	14,853	14,185	14,399
Subtotal	105,559	109,501	106,348	98,487	89,289	89,503
United States	1,303	1,156	1,025	1,531	1,218	1,346
World Total	106,862	110,657	107,373	100,018	90,507	90,849

Note: All data are reported on a milled basis.

Regional Rice Imports, Production, Consumption, and Stocks

Thousand Metric Tons

	2011/12	2012/13	2013/14	2014/15	Jul 2015/16	Aug 2015/16
TY Imports						
North America	1,664	1,776	1,771	1,830	1,945	1,965
Caribbean	845	981	909	1,025	1,025	1,075
South America	1,896	1,843	1,824	1,792	1,917	1,917
Other Europe	114	125	89	130	125	125
Former Soviet Union - 12	456	537	554	471	476	476
Middle East	6,455	7,152	6,637	6,575	6,690	6,690
North Africa	777	487	480	485	485	485
Sub-Saharan Africa	12,135	11,740	12,934	12,870	12,050	12,050
East Asia	4,389	5,332	5,761	6,215	6,415	6,415
South Asia	737	722	2,581	1,670	1,620	1,620
Southeast Asia	5,488	3,606	5,020	5,065	4,650	4,650
Others	2,158	2,197	2,430	2,285	2,275	2,275
Total	37,114	36,498	40,990	40,413	39,673	39,743
Production						
North America	5,979	6,479	6,248	7,226	6,738	6,675
Caribbean	1,002	974	1,040	1,065	1,047	987
South America	15,215	15,852	16,384	16,728	16,530	16,284
European Union - 28	2,139	2,100	1,937	1,878	1,895	1,920
Former Soviet Union - 12	1,294	1,294	1,205	1,185	1,205	1,205
Middle East	2,170	2,251	2,450	2,443	2,549	2,359
North Africa	4,289	4,704	4,789	4,530	4,600	4,600
Sub-Saharan Africa	12,997	13,267	13,912	14,270	14,067	14,067
East Asia	155,508	157,859	157,794	159,383	160,770	160,670
South Asia	152,067	150,895	154,286	150,351	152,312	152,462
Southeast Asia	113,649	115,490	116,867	115,956	117,511	116,311
Others	1,364	1,518	1,278	1,208	1,114	1,114
Total	467,673	472,683	478,190	476,223	480,338	478,654
Domestic Consumption						
North America	4,668	4,977	5,202	5,366	5,409	5,378
Central America	1,156	1,181	1,188	1,193	1,212	1,212
Caribbean	1,977	1,974	1,981	2,098	2,098	2,088
South America	14,180	14,404	14,556	14,653	14,831	14,821
European Union - 28	3,300	3,250	3,250	3,265	3,280	3,280
Former Soviet Union - 12	1,422	1,559	1,535	1,434	1,451	1,451
Middle East	8,603	8,854	9,030	8,965	9,070	9,070
North Africa	4,045	4,572	4,480	4,460	4,460	4,460
Sub-Saharan Africa	23,811	24,777	26,546	26,687	26,312	26,312
East Asia	156,232	160,365	162,627	164,588	167,065	167,065
South Asia	137,234	137,576	143,946	144,542	145,162	144,762
Southeast Asia	99,148	102,008	103,102	104,506	105,141	105,141
Others	661	707	676	530	540	540
Total	456,437	466,204	478,119	482,287	486,031	485,580
Ending Stocks						
North America	1,455	1,345	1,176	1,647	1,446	1,499
Central America	273	241	217	211	208	208
Caribbean	343	279	261	253	227	227
South America	1,606	1,491	1,805	2,073	1,800	1,853
European Union - 28	1,146	1,188	1,163	1,126	1,000	1,086
Middle East	1,526	2,039	1,836	1,679	1,818	1,678
North Africa	487	427	602	907	1,132	1,132
Sub-Saharan Africa	2,085	2,188	1,714	1,977	1,627	1,677
East Asia	48,887	50,826	51,183	51,617	51,241	51,141
South Asia	27,511	27,019	25,625	19,214	15,339	15,779
Southeast Asia	21,369	23,197	21,395	19,010	14,430	14,330
Oceania	40	238	241	152	57	57
Others	134	179	155	152	182	182
Total	106,862	110,657	107,373	100,018	90,507	90,849

NOTES: Regional definitions appear on last page of this circular. Imports are reported on a trade year basis. All other data are reported using local marketing years.

COARSE GRAINS: WORLD MARKETS AND TRADE

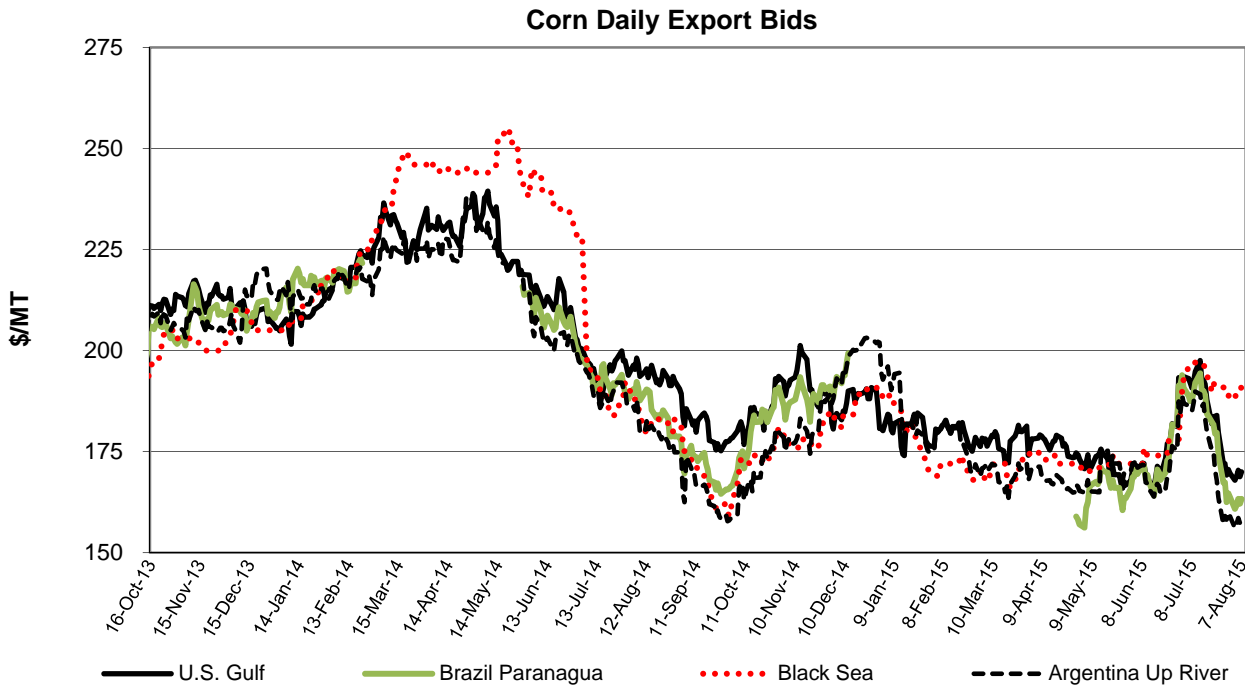
OVERVIEW

World corn production in 2015/16 is down marginally as smaller crops in China and EU more than offset gains in Brazil, Russia, Ukraine, and the United States. At the global level, trade is up, led by higher EU import demand. Exporters are shuffled, with higher projections for Argentina, Brazil, Russia, and Ukraine more than offsetting reduced forecasts for EU and Serbia. U.S. exports are lowered on strong competition from South America. U.S. imports are raised slightly, and the season-average farm price is reduced.

For 2014/15, world production is higher with larger crops in Argentina, Brazil, and Mexico. Trade is higher, led by stronger demand from China, EU, South Korea, and Mexico. Exports for Argentina, EU, and Ukraine are raised. U.S. exports are unchanged, imports are up slightly, and the season-average farm price is unchanged.

PRICES

Quotes for corn from all origins are down since the release of the July WASDE report, generally touching 5-year lows. U.S. quotes dropped \$25/ton to \$170 on generally favorable growing conditions, a stronger dollar, and competition from South American supplies. Argentine and Brazilian quotes fell about \$30/ton each to \$157 and \$163, respectively, maintaining a discount to U.S. prices. Black Sea quotes, although falling \$6/ton to \$191, remain elevated relative to other origins, likely reflecting tight old-crop supplies and strong demand from EU and China.



TRADE CHANGES IN 2015/16

Selected Exporters

- **U.S. corn** is down 1.0 million tons to 47.0 million on strong competition from South America.
- **Argentine corn** is raised 500,000 tons to 15.5 million on larger exportable supplies from the recent (2014/15) harvest. (Exports for 2014/15 are up 1.0 million tons to 19.0 million.)
- **Brazilian corn** is boosted 1.5 million tons to 28.0 million on higher crop prospects for both the 2014/15 and 2015/16 harvests.
- **EU corn** is slashed 500,000 tons to 2.0 million as crop prospects are sharply lower this month. (Exports for 2014/15 are up 300,000 tons to 3.8 million.)
- **Russian corn** is raised 500,000 tons to 4.0 million on larger exportable supplies, and greater EU demand.
- **Serbian corn** is cut 1.0 million tons to 1.8 million as hot, dry conditions reduce crop prospects.
- **Ukrainian corn** is up 1.5 million tons to 17.5 million on larger exportable supplies, greater EU demand, and lower Serbian competition. (Exports for 2014/15 are up 1.0 million tons to 19.0 million.)
- **Canadian barley** is down 300,000 tons to 1.0 million because of tighter exportable supplies. Production, supplies, and ending stocks are at multi-decade lows.
- **EU barley** is down 500,000 tons to 7.0 million because of tight exportable supplies. (Exports for the trade year ending September 2015 are boosted 200,000 tons to 9.0 million because of large early-season sales as indicated by export licenses.)
- **Ukrainian barley** is doubled to 4.0 million tons on a much larger crop and lower competition. (Exports for 2014/15 are boosted 800,000 tons to 3.5 million.)
- **U.S. sorghum** is raised 1.0 million tons to a new record 11.0 million based on greater exportable supplies and continued strong demand from China.
- **Argentine sorghum** is lowered 200,000 tons to 1.5 million because of weak demand from Chile and Colombia. (Exports for 2014/15 are cut 300,000 tons to 1.2 million.)

Selected Importers

- **U.S. corn** is raised 100,000 tons to 750,000 on a continued higher level of imports from the EU (Imports for 2014/15 are raised 50,000 tons to 750,000.)
- **EU corn** is boosted by 1.0 million tons to 15.0 million as domestic grain supplies are projected lower again this month because of hot, dry conditions. EU surpasses Japan as the world's largest corn importer. (Imports for 2014/15 are raised 500,000 tons to 9.0 million.)
- **Japanese corn** is cut 200,000 tons to 14.8 million because of slightly weaker demand from both feed and non-feed sectors.
- **Venezuelan corn** is lowered 300,000 tons to 2.0 million because of weak demand arising from a sluggish economy. (Imports for 2014/15 are cut 400,000 tons to 2.0 million.)
- **Saudi barley** is raised 500,000 tons to 7.0 million based on tighter carryin supplies and larger exportable supplies from Ukraine.
- **Chinese sorghum** is up 1.0 tons to 11.0 million because of continued new-crop sales and larger exportable supplies from the United States.

TRADE CHANGES IN 2014/15

Selected Importers- based on trade data

- **Chinese corn** is boosted 1.3 million tons to 4.3 million.
- **Mexican corn** is up 300,000 tons to 10.3 million.
- **South Korean corn** is up 400,000 tons to 10.0 million.
- **Chinese barley** is raised 300,000 tons to 8.3 million.
- **Iranian barley** is up 200,000 tons to 2.0 million.
- **Moroccan barley** is lowered 200,000 tons to 300,000.

World Coarse Grain Trade
October/September Year, Thousand Metric Tons

	2011/12	2012/13	2013/14	2014/15	2015/16 Jul	2015/16 Aua
TY Exports						
Argentina	22,308	29,497	16,630	21,705	18,705	19,005
Australia	7,279	6,410	7,003	6,425	7,325	7,325
Brazil	12,677	26,078	22,059	22,040	26,515	28,015
Canada	3,853	4,658	5,460	3,850	3,500	3,200
European Union	7,177	8,914	7,837	13,205	10,305	9,305
India	4,858	5,541	4,524	1,350	2,500	2,500
Paraguay	2,188	2,861	2,718	2,005	2,305	2,305
Russia	5,997	4,365	7,043	8,220	7,310	7,810
Serbia	2,345	628	1,755	2,925	2,825	1,825
Ukraine	17,447	15,527	24,125	22,700	18,180	21,680
Others	7,127	7,106	8,694	6,937	7,065	7,065
Subtotal	93,256	111,585	107,848	111,362	106,535	110,035
United States	40,106	20,586	56,772	55,330	58,285	58,335
World Total	133,362	132,171	164,620	166,692	164,820	168,370
TY Imports						
Algeria	3,741	3,289	4,946	4,760	4,810	4,810
Brazil	1,211	1,240	1,184	1,125	1,200	1,200
Canada	764	523	714	1,635	1,535	1,710
Chile	1,523	1,327	1,621	1,800	1,950	1,950
China	7,924	5,604	12,445	21,250	20,250	21,250
Colombia	4,103	4,090	4,795	4,730	4,880	4,830
Egypt	7,252	5,096	8,776	7,555	8,055	8,055
European Union	6,908	11,777	16,262	9,445	14,205	15,255
Indonesia	1,724	2,719	3,501	3,500	3,000	3,000
Iran	5,700	4,800	6,600	8,000	5,500	5,500
Israel	1,530	1,564	2,073	2,075	2,175	2,175
Japan	17,730	17,743	17,501	17,290	17,390	17,190
Jordan	1,311	1,406	1,672	1,550	1,475	1,475
Korea, South	7,726	8,265	10,499	10,090	10,090	10,090
Libya	829	1,220	1,493	1,500	1,450	1,450
Malaysia	3,309	3,048	3,476	3,400	3,600	3,600
Mexico	12,819	7,627	11,317	10,550	10,625	10,575
Morocco	2,479	1,831	2,858	2,300	2,300	2,300
Peru	1,927	2,404	2,336	2,850	2,625	2,625
Saudi Arabia	10,485	12,390	11,331	10,125	11,025	11,525
Taiwan	4,478	4,398	4,356	4,300	4,400	4,400
Tunisia	1,071	1,610	1,449	1,500	1,500	1,500
Turkey	782	1,922	1,977	2,310	1,255	1,255
Venezuela	2,596	2,154	2,627	2,000	2,300	2,000
Vietnam	1,600	1,700	2,800	2,000	1,800	1,800
Others	15,483	13,547	16,127	16,190	16,125	16,125
Subtotal	127,005	123,294	154,736	153,830	155,520	157,645
Unaccounted	3,215	2,362	6,562	9,629	6,350	7,675
United States	3,142	6,515	3,322	3,233	2,950	3,050
World Total	133,362	132,171	164,620	166,692	164,820	168,370

TY=Trade Year, see Endnotes.

World Coarse Grains Production, Consumption, and Stocks
Local Marketing Years, Thousand Metric Tons

	2011/12	2012/13	2013/14	2014/15	2015/16 Jul	2015/16 Aua
Production						
Argentina	30,105	37,246	35,665	33,532	33,461	33,461
Australia	12,257	11,414	12,158	11,347	12,575	12,575
Brazil	75,884	84,253	82,603	86,603	79,583	81,583
Canada	22,921	24,427	28,745	21,915	23,400	22,400
China	198,635	212,192	225,070	222,170	235,500	231,500
Ethiopia	12,264	12,286	14,468	13,350	13,790	13,790
European Union	149,923	145,942	159,019	169,733	155,702	151,920
India	42,250	39,940	43,210	40,390	41,630	41,630
Indonesia	8,850	8,500	9,100	9,400	9,600	9,600
Mexico	25,689	28,881	32,020	32,326	31,975	31,975
Nigeria	17,421	18,573	19,292	19,015	17,950	17,950
Russia	33,077	28,658	35,735	40,386	38,800	39,300
South Africa	13,268	12,873	15,578	11,785	14,068	14,068
Turkey	11,299	10,595	13,075	9,475	13,475	13,475
Ukraine	33,476	29,527	39,918	39,345	33,125	36,425
Others	146,154	146,352	148,406	156,564	157,864	156,879
Subtotal	833,473	851,659	914,062	917,336	912,498	908,531
United States	322,451	285,311	367,089	377,122	362,468	368,210
World Total	1,155,924	1,136,970	1,281,151	1,294,458	1,274,966	1,276,741
Domestic Consumption						
Argentina	10,510	12,050	13,595	14,332	15,051	15,076
Brazil	53,653	55,803	58,028	59,928	61,843	61,843
Canada	20,285	20,261	22,452	21,150	21,555	21,355
China	196,192	209,671	227,600	239,450	243,475	243,475
Egypt	12,736	12,910	14,080	14,809	15,408	15,408
Ethiopia	11,850	12,150	14,300	14,050	14,000	14,000
European Union	151,460	153,095	164,105	163,095	163,925	161,825
India	37,750	35,275	37,600	39,400	39,150	39,150
Iran	10,320	10,520	11,320	11,820	12,520	12,520
Japan	17,990	18,030	17,640	17,440	17,540	17,340
Mexico	37,985	36,195	40,885	41,940	42,540	42,540
Nigeria	17,321	18,700	19,350	18,950	18,150	18,150
Russia	27,728	25,134	28,619	31,439	32,100	32,100
Turkey	11,755	13,005	13,430	13,080	13,880	13,880
Ukraine	15,559	14,661	15,927	15,485	15,805	14,805
Others	214,785	218,691	225,739	234,003	239,449	238,719
Subtotal	866,066	859,957	933,021	962,733	970,297	967,790
United States	288,857	275,537	305,048	310,628	311,871	313,791
World Total	1,154,923	1,135,494	1,238,069	1,273,361	1,282,168	1,281,581
Ending Stocks						
Brazil	9,821	14,559	19,259	20,019	14,944	16,944
China	60,362	68,378	78,260	82,180	93,080	91,380
European Union	15,745	13,083	15,605	17,948	13,970	13,593
Iran	4,684	4,654	5,094	7,234	5,874	6,074
Mexico	1,857	1,628	3,583	4,012	2,936	3,522
Saudi Arabia	3,211	3,391	3,888	4,073	3,693	3,693
Ukraine	2,421	2,330	3,635	3,645	2,855	3,140
Others	40,689	36,531	47,530	45,198	40,749	41,918
Subtotal	138,790	144,554	176,854	184,309	178,101	180,264
United States	27,819	23,531	34,313	47,955	43,967	47,160
World Total	166,609	168,085	211,167	232,264	222,068	227,424

Regional Coarse Grains Imports, Production, Consumption, and Stocks

Thousand Metric Tons

	2011/12	2012/13	2013/14	2014/15	Jul 2015/16	Aug 2015/16
TY Imports						
North America	16,725	14,665	15,353	15,418	15,110	15,335
Central America	2,769	2,470	2,923	3,275	3,350	3,350
Caribbean	2,156	2,327	2,330	2,410	2,410	2,410
South America	11,967	11,814	13,182	13,125	13,450	13,100
European Union - 28	6,908	11,777	16,262	9,445	14,205	15,255
Former Soviet Union - 12	1,038	725	832	807	815	815
Middle East	23,515	25,076	26,613	26,695	24,140	24,640
North Africa	15,372	13,046	19,522	17,615	18,115	18,115
Sub-Saharan Africa	3,316	2,742	3,544	3,793	4,000	4,000
East Asia	38,040	36,163	44,880	53,030	52,230	53,030
Southeast Asia	7,317	8,058	11,287	10,135	9,380	9,380
Others	1,024	946	1,330	1,315	1,265	1,265
Total	130,147	129,809	158,058	157,063	158,470	160,695
Production						
North America	371,061	338,619	427,854	431,363	417,843	422,585
South America	117,970	135,276	131,324	133,616	127,209	129,214
European Union - 28	149,923	145,942	159,019	169,733	155,702	151,920
Other Europe	9,497	6,570	8,813	10,696	9,836	8,746
Former Soviet Union - 12	78,648	68,221	87,627	91,452	83,456	87,056
Middle East	20,412	18,769	21,760	17,942	22,181	22,181
North Africa	11,142	10,126	11,647	11,192	12,232	12,532
Sub-Saharan Africa	100,161	104,166	104,553	106,010	106,789	106,789
East Asia	200,771	214,639	227,482	224,599	237,909	233,909
South Asia	50,495	48,589	52,250	49,438	50,488	50,488
Southeast Asia	28,379	29,138	30,968	31,875	33,278	33,278
Oceania	12,813	12,082	12,804	12,019	13,236	13,236
Others	4,652	4,833	5,050	4,523	4,807	4,807
Total	1,155,924	1,136,970	1,281,151	1,294,458	1,274,966	1,276,741
Domestic Consumption						
North America	347,127	331,993	368,385	373,718	375,966	377,686
South America	85,231	89,434	94,093	97,112	100,479	100,249
European Union - 28	151,460	153,095	164,105	163,095	163,925	161,825
Other Europe	8,375	7,100	7,702	8,037	8,115	8,040
Former Soviet Union - 12	54,378	50,230	55,633	58,287	59,711	58,611
Middle East	41,186	43,027	45,890	45,744	47,566	47,566
North Africa	25,266	24,941	27,998	29,896	30,940	30,940
Sub-Saharan Africa	98,477	103,827	103,748	107,604	107,941	107,941
East Asia	228,717	243,025	261,824	273,671	277,961	277,661
South Asia	45,833	43,444	46,591	48,613	48,428	48,428
Southeast Asia	34,612	35,867	37,904	39,140	40,865	40,665
Oceania	6,518	6,132	5,765	5,923	5,926	5,926
Others	9,556	9,573	10,080	10,159	10,439	10,439
Total	1,136,736	1,141,688	1,229,718	1,260,999	1,278,262	1,275,977
Ending Stocks						
North America	33,066	28,243	42,524	55,195	49,836	53,465
South America	14,133	19,639	25,274	25,554	19,514	21,744
European Union - 28	15,745	13,083	15,605	17,948	13,970	13,593
Other Europe	1,024	603	766	1,281	1,017	1,002
Former Soviet Union - 12	6,185	5,037	6,973	7,928	5,963	6,198
Middle East	10,547	10,059	11,840	13,128	12,013	12,213
North Africa	5,504	3,526	5,719	5,226	4,573	4,923
Sub-Saharan Africa	9,248	9,088	10,056	9,530	8,798	8,798
East Asia	63,392	71,035	81,590	85,498	95,897	94,701
South Asia	2,938	2,814	4,347	3,958	3,718	3,718
Southeast Asia	3,061	3,275	4,396	5,146	4,699	4,999
Oceania	978	915	1,133	914	1,019	1,019
Others	788	768	944	958	1,051	1,051
Total	166,609	168,085	211,167	232,264	222,068	227,424

NOTES: Regional definitions appear on last page of this circular. Imports are reported on a trade year basis. All other data are reported using local marketing years.

World Corn Trade
October/September Year, Thousand Metric Tons

	2011/12	2012/13	2013/14	2014/15	2015/16 Jul	2015/16 Aua
TY Exports						
Argentina	16,501	22,789	12,846	19,000	15,000	15,500
Brazil	12,674	26,044	22,041	22,000	26,500	28,000
Burma	200	550	700	850	900	900
European Union	3,287	2,193	2,401	3,800	2,500	2,000
India	4,674	4,768	3,889	1,000	2,000	2,000
Paraguay	2,188	2,858	2,714	2,000	2,300	2,300
Russia	2,027	1,917	4,192	2,900	3,500	4,000
Serbia	2,331	601	1,736	2,900	2,800	1,800
South Africa	1,831	2,398	2,104	1,000	1,000	1,000
Ukraine	15,157	12,726	20,004	19,000	16,000	17,500
Others	4,470	5,421	6,843	4,650	4,835	4,835
Subtotal	65,340	82,265	79,470	79,100	77,335	79,835
United States	38,342	18,262	50,684	46,000	48,000	47,000
World Total	103,682	100,527	130,154	125,100	125,335	126,835
TY Imports						
Algeria	3,231	2,918	4,156	4,000	4,200	4,200
Canada	747	493	679	1,500	1,500	1,500
Chile	906	844	1,456	1,600	1,700	1,800
China	5,231	2,702	3,277	4,300	3,000	3,000
Colombia	3,209	3,266	4,436	4,400	4,500	4,500
Cuba	743	911	928	900	900	900
Dominican Republic	1,054	1,046	1,011	1,100	1,100	1,100
Egypt	7,154	5,059	8,726	7,500	8,000	8,000
European Union	6,113	11,362	15,919	9,000	14,000	15,000
Indonesia	1,724	2,719	3,501	3,500	3,000	3,000
Iran	4,000	3,700	5,500	6,000	4,000	4,000
Israel	1,221	1,224	1,652	1,700	1,800	1,800
Japan	14,892	14,412	15,121	14,900	15,000	14,800
Kenya	400	100	800	900	1,000	1,000
Korea, South	7,636	8,174	10,406	10,000	10,000	10,000
Malaysia	3,309	3,048	3,476	3,400	3,600	3,600
Mexico	11,172	5,676	10,954	10,300	10,300	10,300
Morocco	1,943	1,684	2,349	2,000	2,100	2,100
Peru	1,772	2,254	2,232	2,700	2,500	2,500
Saudi Arabia	1,816	2,063	2,684	3,500	4,500	4,500
Taiwan	4,341	4,232	4,189	4,200	4,300	4,300
Tunisia	853	846	993	1,000	1,100	1,100
Turkey	729	1,656	1,381	2,000	1,200	1,200
Venezuela	2,596	2,154	2,626	2,000	2,300	2,000
Vietnam	1,600	1,700	2,800	2,000	1,800	1,800
Others	12,292	10,634	13,113	13,106	13,020	13,020
Subtotal	100,684	94,877	124,365	117,506	120,420	121,020
Unaccounted	2,233	1,385	5,062	6,844	4,265	5,065
United States	765	4,265	727	750	650	750
World Total	103,682	100,527	130,154	125,100	125,335	126,835

TY=Trade Year, see Endnotes.

World Corn Production, Consumption, and Stocks
Local Marketing Years, Thousand Metric Tons

	2011/12	2012/13	2013/14	2014/15	2015/16 Jul	2015/16 Aua
Production						
Argentina	21,000	27,000	26,000	26,500	25,000	25,000
Brazil	73,000	81,500	80,000	84,000	77,000	79,000
Canada	11,359	13,060	14,194	11,500	12,300	12,300
China	192,780	205,614	218,490	215,670	229,000	225,000
Egypt	5,500	5,800	5,800	5,960	6,000	6,000
Ethiopia	6,069	6,158	7,451	6,500	7,000	7,000
European Union	68,123	58,896	64,655	75,125	65,773	62,253
India	21,760	22,260	24,260	22,500	23,500	23,500
Indonesia	8,850	8,500	9,100	9,400	9,600	9,600
Mexico	18,726	21,591	22,880	25,000	23,500	23,500
Nigeria	9,250	7,630	7,700	7,515	7,000	7,000
Philippines	7,130	7,261	7,532	7,688	8,300	8,300
Russia	6,962	8,213	11,635	11,325	13,000	13,500
South Africa	12,759	12,365	14,982	11,300	13,500	13,500
Ukraine	22,838	20,922	30,900	28,450	26,000	27,000
Others	89,288	89,335	93,924	96,720	96,954	95,514
Subtotal	575,394	596,105	639,503	645,153	643,427	637,967
United States	312,789	273,192	351,272	361,091	343,678	347,642
World Total	888,183	869,297	990,775	1,006,244	987,105	985,609
Total Consumption						
Argentina	7,000	7,900	8,800	9,400	10,000	10,000
Brazil	50,500	52,500	55,000	57,000	59,000	59,000
Canada	11,636	11,605	12,700	12,800	13,350	13,350
China	188,000	200,000	212,000	216,000	220,000	219,000
Egypt	11,700	12,000	13,200	13,900	14,500	14,500
European Union	69,500	69,600	76,500	78,000	80,000	78,000
India	17,200	17,500	19,600	21,700	21,700	21,700
Indonesia	10,500	10,900	11,900	12,100	12,700	12,500
Japan	14,900	14,500	15,100	14,900	15,000	14,800
Korea, South	7,815	8,481	9,891	10,100	10,200	10,100
Mexico	29,000	27,000	31,700	34,050	33,950	33,950
Philippines	7,400	7,400	8,000	8,500	8,800	8,800
Russia	4,700	6,400	7,500	8,400	9,300	9,300
South Africa	10,700	11,000	11,500	11,400	11,400	11,400
Ukraine	7,800	8,100	9,700	9,700	10,400	9,500
Others	140,419	141,291	149,757	154,191	157,812	157,362
Subtotal	605,520	601,539	660,022	682,660	689,844	685,032
United States	277,961	262,973	292,965	301,131	301,258	302,909
World Total	883,481	864,512	952,987	983,791	991,102	987,941
Ending Stocks						
Brazil	9,212	14,150	18,972	19,772	14,572	16,572
China	59,335	67,570	77,315	81,260	91,910	90,210
European Union	6,682	5,147	6,820	9,145	6,118	6,398
Indonesia	732	1,040	1,729	2,499	2,274	2,574
Iran	3,336	3,236	4,476	5,816	4,656	4,656
Mexico	1,316	1,061	2,694	3,444	1,994	2,794
South Africa	1,276	664	2,255	1,705	2,330	2,330
Others	25,383	23,452	29,414	28,757	25,493	26,029
Subtotal	107,272	116,320	143,675	152,398	149,347	151,563
United States	25,122	20,859	31,292	45,022	40,607	43,525
World Total	132,394	137,179	174,967	197,420	189,954	195,088

Regional Corn Imports, Production, Consumption, and Stocks

Thousand Metric Tons

	2011/12	2012/13	2013/14	2014/15	Jul 2015/16	Aug 2015/16
TY Imports						
North America	12,684	10,434	12,360	12,550	12,450	12,550
Central America	2,766	2,470	2,922	3,275	3,350	3,350
South America	9,886	9,653	12,027	11,850	12,100	11,900
European Union - 28	6,113	11,362	15,919	9,000	14,000	15,000
Former Soviet Union - 12	328	324	464	465	490	490
Middle East	10,853	10,942	13,812	15,500	13,900	13,900
North Africa	13,827	11,154	17,036	15,300	16,150	16,150
Sub-Saharan Africa	2,655	2,086	2,927	3,286	3,520	3,520
East Asia	32,282	29,673	33,072	33,500	32,400	32,200
Southeast Asia	7,304	8,040	11,246	10,120	9,365	9,365
Caribbean	2,156	2,327	2,330	2,410	2,410	2,410
Others	595	677	977	1,000	935	935
Total	101,449	99,142	125,092	118,256	121,070	121,770
Production						
North America	342,874	307,843	388,346	397,591	379,478	383,442
South America	103,988	119,989	116,737	121,727	113,685	115,535
European Union - 28	68,123	58,896	64,655	75,125	65,773	62,253
Other Europe	7,810	4,915	7,210	8,945	8,066	6,976
Former Soviet Union - 12	34,121	32,310	46,898	43,469	42,660	43,960
Middle East	7,164	7,480	8,138	7,848	8,838	8,838
North Africa	5,722	5,891	6,001	6,161	6,201	6,201
Sub-Saharan Africa	62,102	60,564	64,349	61,085	62,285	62,285
East Asia	194,585	207,760	220,595	217,791	231,113	227,113
South Asia	28,647	29,636	31,912	30,160	30,970	30,970
Central America	3,602	3,743	3,893	3,366	3,650	3,650
Southeast Asia	28,138	28,893	30,721	31,630	33,033	33,033
Others	1,307	1,377	1,320	1,346	1,353	1,353
Total	888,183	869,297	990,775	1,006,244	987,105	985,609
Domestic Consumption						
North America	318,597	301,578	337,365	347,981	348,558	350,209
South America	74,921	78,406	83,176	86,280	89,330	89,055
European Union - 28	69,500	69,600	76,500	78,000	80,000	78,000
Other Europe	6,392	5,194	5,847	6,055	6,095	6,020
Former Soviet Union - 12	16,420	18,085	21,135	21,835	23,705	22,705
Middle East	17,585	18,710	19,785	22,185	23,335	23,335
North Africa	18,000	18,450	20,800	22,100	23,050	23,050
Sub-Saharan Africa	60,343	59,973	62,839	62,681	62,812	62,812
East Asia	217,047	229,434	243,295	247,355	251,625	250,325
South Asia	23,875	24,380	27,182	29,505	29,570	29,570
Southeast Asia	34,357	35,609	37,653	38,860	40,610	40,410
Central America	6,350	6,175	6,650	6,675	6,910	6,910
Others	3,344	3,556	3,586	3,760	3,770	3,770
Total	866,731	869,150	945,813	973,272	989,370	986,171
Ending Stocks						
North America	27,803	23,469	35,586	49,766	43,851	47,569
South America	12,802	17,708	22,758	23,605	18,093	19,890
European Union - 28	6,682	5,147	6,820	9,145	6,118	6,398
Other Europe	771	353	517	1,037	768	753
Former Soviet Union - 12	2,445	2,004	3,420	3,349	3,164	3,414
Middle East	4,510	4,228	5,957	7,025	6,283	6,283
North Africa	2,994	1,719	3,168	2,919	2,210	2,210
Sub-Saharan Africa	7,041	6,664	8,031	7,266	6,824	6,824
East Asia	61,841	69,734	80,134	84,045	94,179	92,983
South Asia	1,644	2,075	3,184	3,094	2,669	2,669
Southeast Asia	3,058	3,270	4,390	5,140	4,693	4,993
Central America	503	474	610	551	616	616
Others	300	334	392	478	486	486
Total	132,394	137,179	174,967	197,420	189,954	195,088

NOTES: Regional definitions appear on last page of this circular. Imports are reported on a trade year basis. All other data are reported using local marketing years.

World Barley Trade
October/September Year, Thousand Metric Tons

	2011/12	2012/13	2013/14	2014/15	2015/16 Jul	2015/16 Aug
TY Exports						
Argentina	3,631	3,647	2,829	1,500	2,000	2,000
Australia	5,819	4,621	6,262	5,500	6,000	6,000
Canada	1,437	1,316	1,714	1,500	1,300	1,000
European Union	3,646	6,473	4,926	9,000	7,500	7,000
India	52	542	546	300	400	400
Kazakhstan	659	151	575	500	500	500
Russia	3,668	2,366	2,762	5,200	3,700	3,700
Serbia	14	26	18	25	25	25
Turkey	103	0	9	10	25	25
Ukraine	2,166	2,659	3,827	3,500	2,000	4,000
Others	22	166	68	100	35	35
Subtotal	21,217	21,967	23,536	27,135	23,485	24,685
United States	179	163	336	300	250	300
World Total	21,396	22,130	23,872	27,435	23,735	24,985
TY Imports						
Algeria	501	364	778	750	600	600
Azerbaijan	49	14	78	125	100	100
Brazil	274	369	338	325	400	400
Canada	6	21	9	125	25	200
China	2,541	2,184	4,891	8,300	7,000	7,000
Colombia	301	232	253	275	275	275
European Union	364	52	58	225	50	100
Iran	1,700	1,100	1,100	2,000	1,500	1,500
Israel	276	244	304	325	325	325
Japan	1,257	1,356	1,294	1,300	1,300	1,300
Jordan	736	831	997	900	800	800
Kuwait	376	388	436	400	400	400
Libya	183	573	681	700	700	700
Mexico	144	47	108	100	125	125
Morocco	536	147	471	300	200	200
Peru	97	103	87	125	100	100
Saudi Arabia	8,600	10,200	8,500	6,600	6,500	7,000
Tunisia	218	764	456	500	400	400
United Arab Emirates	524	541	468	400	400	400
Uruguay	77	252	126	200	125	125
Others	1,646	1,426	1,618	1,267	1,000	1,000
Subtotal	20,406	21,208	23,051	25,242	22,325	23,050
Unaccounted	520	491	299	1,743	910	1,435
United States	470	431	522	450	500	500
World Total	21,396	22,130	23,872	27,435	23,735	24,985

TY=Trade Year, see Endnotes.

World Barley Production, Consumption, and Stocks
Local Marketing Years, Thousand Metric Tons

	2011/12	2012/13	2013/14	2014/15	2015/16 Jul	2015/16 Aug
Production						
Algeria	1,350	1,500	1,500	1,300	1,300	1,300
Argentina	4,500	5,000	4,750	2,900	3,400	3,400
Australia	8,221	7,472	9,174	8,014	8,700	8,700
Belarus	1,979	1,917	1,674	2,250	2,000	2,000
Canada	7,892	8,012	10,237	7,120	7,500	6,500
China	1,637	1,626	1,500	1,500	1,500	1,500
Ethiopia	1,592	1,782	2,053	2,100	2,040	2,040
European Union	51,883	54,875	59,722	60,197	57,239	57,196
India	1,660	1,620	1,750	1,830	1,630	1,630
Iran	2,900	2,770	2,800	3,200	3,300	3,300
Kazakhstan	2,593	1,500	2,539	2,412	2,600	2,600
Morocco	2,340	1,200	2,700	1,700	3,200	3,500
Russia	16,938	13,952	15,389	20,026	17,000	17,000
Turkey	7,000	5,500	7,300	4,000	7,000	7,000
Ukraine	9,098	6,935	7,561	9,450	6,000	8,300
Others	8,611	8,753	9,207	8,944	8,876	8,876
Subtotal	130,194	124,414	139,856	136,943	133,285	134,842
United States	3,370	4,768	4,719	3,849	4,531	4,565
World Total	133,564	129,182	144,575	140,792	137,816	139,407
Total Consumption						
Algeria	1,800	2,000	2,050	2,050	2,050	2,050
Argentina	1,200	1,300	1,600	1,500	1,600	1,600
Australia	3,300	3,000	2,800	2,600	2,600	2,600
Belarus	2,100	2,000	1,800	2,100	2,200	2,200
Canada	6,916	6,809	7,720	6,400	6,400	6,200
China	3,800	4,000	6,300	9,800	8,400	8,400
Ethiopia	1,600	1,725	2,000	2,100	2,150	2,150
European Union	51,200	51,000	53,400	51,000	50,500	50,500
Iran	4,100	4,300	4,500	4,600	4,800	4,800
Kazakhstan	1,825	1,375	2,000	1,900	2,100	2,100
Morocco	3,100	1,900	2,300	2,700	3,000	3,000
Russia	14,300	12,100	12,700	14,100	14,000	14,000
Saudi Arabia	7,225	8,325	8,625	8,125	7,525	7,525
Turkey	6,750	6,200	6,950	5,350	6,650	6,650
Ukraine	6,300	5,100	5,000	4,500	4,400	4,300
Others	15,778	16,117	16,744	16,741	16,533	16,533
Subtotal	131,030	126,772	136,308	136,644	135,992	137,335
United States	4,170	4,638	4,775	4,129	4,746	4,636
World Total	135,200	131,410	141,083	140,773	140,738	141,971
Ending Stocks						
Algeria	1,458	1,217	1,178	1,378	1,228	1,228
Canada	1,195	983	1,950	1,295	1,045	795
European Union	6,069	5,071	5,696	5,593	5,532	4,989
Iran	1,348	1,418	618	1,418	1,218	1,418
Morocco	775	189	976	376	726	1,076
Saudi Arabia	2,814	3,006	3,396	3,486	2,976	2,976
Turkey	910	469	899	389	764	764
Others	6,817	6,361	7,452	8,328	6,351	6,416
Subtotal	21,386	18,714	22,165	22,263	19,840	19,662
United States	1,306	1,750	1,791	1,712	1,823	1,749
World Total	22,692	20,464	23,956	23,975	21,663	21,411

Regional Barley Imports, Production, Consumption, and Stocks

Thousand Metric Tons

	2011/12	2012/13	2013/14	2014/15	Jul 2015/16	Aug 2015/16
TY Imports						
North America	620	499	639	675	650	825
South America	851	1,064	887	1,060	985	985
European Union - 28	364	52	58	225	50	100
Other Europe	209	127	163	130	160	160
Former Soviet Union - 12	697	375	362	337	320	320
Middle East	12,543	13,906	12,537	11,110	10,160	10,660
North Africa	1,482	1,885	2,433	2,300	1,950	1,950
Sub-Saharan Africa	100	52	116	80	90	90
East Asia	3,924	3,663	6,320	9,725	8,425	8,425
South Asia	67	7	12	15	10	10
Oceania	19	9	46	35	25	25
Total	20,876	21,639	23,573	25,692	22,825	23,550
Production						
North America	11,749	13,812	15,506	11,519	12,616	11,650
South America	5,530	6,084	5,880	3,922	4,500	4,500
European Union - 28	51,883	54,875	59,722	60,197	57,239	57,196
Other Europe	1,189	1,188	1,151	1,270	1,287	1,287
Former Soviet Union - 12	32,227	25,958	29,153	35,763	29,325	31,625
Middle East	11,705	9,689	12,070	8,648	11,948	11,948
North Africa	4,410	3,306	4,725	4,109	5,109	5,409
Sub-Saharan Africa	2,099	2,283	2,521	2,602	2,550	2,550
East Asia	1,962	1,920	1,800	1,801	1,790	1,790
South Asia	2,272	2,156	2,457	2,537	2,337	2,337
Oceania	8,538	7,911	9,590	8,424	9,115	9,115
Total	133,564	129,182	144,575	140,792	137,816	139,407
Domestic Consumption						
North America	11,786	12,347	13,195	11,229	11,846	11,536
South America	3,077	3,327	3,553	3,485	3,640	3,640
European Union - 28	51,200	51,000	53,400	51,000	50,500	50,500
Other Europe	1,366	1,298	1,298	1,389	1,422	1,422
Former Soviet Union - 12	26,268	22,339	23,451	24,505	24,655	24,555
Middle East	22,016	22,435	24,410	21,896	22,756	22,756
North Africa	6,186	5,560	6,230	6,859	6,958	6,958
Sub-Saharan Africa	2,133	2,285	2,555	2,665	2,715	2,715
East Asia	5,580	5,806	8,009	11,505	10,100	10,100
South Asia	2,202	2,067	1,913	2,112	2,012	2,012
Oceania	3,650	3,425	3,250	3,050	3,050	3,050
Total	135,464	131,889	141,264	139,695	139,654	139,244
Ending Stocks						
North America	2,621	3,014	3,980	3,196	3,067	2,743
South America	547	685	963	977	732	797
European Union - 28	6,069	5,071	5,696	5,593	5,532	4,989
Other Europe	205	223	208	196	196	196
Former Soviet Union - 12	2,760	2,193	2,554	3,637	2,017	2,017
Middle East	5,940	5,736	5,811	6,038	5,665	5,865
North Africa	2,449	1,740	2,482	2,233	2,284	2,634
Sub-Saharan Africa	283	330	408	425	350	350
East Asia	961	737	848	869	984	984
South Asia	281	144	255	246	181	181
Oceania	576	591	751	565	655	655
Total	22,692	20,464	23,956	23,975	21,663	21,411

NOTES: Regional definitions appear on last page of this circular. Imports are reported on a trade year basis. All other data are reported using local marketing years.

World Sorghum Trade
October/September Year, Thousand Metric Tons

	2011/12	2012/13	2013/14	2014/15	2015/16 Jul	2015/16 Aua
TY Exports						
Argentina	2,163	3,059	953	1,200	1,700	1,500
Australia	1,185	1,425	405	600	900	900
China	36	27	11	25	25	25
India	132	231	89	50	100	100
Nigeria	75	50	50	100	50	50
South Africa	17	13	23	25	50	50
Ukraine	113	124	229	150	150	150
Others	179	228	268	187	130	130
Subtotal	3,900	5,157	2,028	2,337	3,105	2,905
United States	1,549	2,136	5,717	9,000	10,000	11,000
World Total	5,449	7,293	7,745	11,337	13,105	13,905
TY Imports						
Chile	544	404	109	100	200	100
China	84	631	4,161	8,500	10,000	11,000
Colombia	592	591	104	50	100	50
Ethiopia	30	50	50	50	50	50
European Union	126	291	186	125	100	100
Japan	1,481	1,897	1,003	1,000	1,000	1,000
Kenya	74	102	94	100	100	100
Mexico	1,369	1,793	162	50	100	50
Sudan	125	175	75	75	75	75
Taiwan	84	116	111	50	50	50
Others	572	571	624	277	265	265
Subtotal	5,081	6,621	6,679	10,377	12,040	12,840
Unaccounted	365	429	1,063	952	1,065	1,065
United States	3	243	3	8	0	0
World Total	5,449	7,293	7,745	11,337	13,105	13,905

TY=Trade Year, see Endnotes.

World Sorghum Production, Consumption, and Stocks
Local Marketing Years, Thousand Metric Tons

	2011/12	2012/13	2013/14	2014/15	2015/16 Jul	2015/16 Aua
Production						
Argentina	4,200	4,700	4,400	3,500	4,500	4,500
Australia	2,239	2,230	1,282	1,788	2,100	2,100
Brazil	2,222	2,102	1,890	2,000	2,000	2,000
Burkina	1,500	1,924	1,880	1,836	1,900	1,900
Cameroon	1,150	1,100	1,150	1,150	1,150	1,150
Chad	648	1,172	745	900	900	900
China	2,051	2,556	2,700	2,600	2,600	2,600
Ethiopia	3,951	3,604	4,114	4,000	4,000	4,000
India	6,030	5,300	5,540	4,790	5,500	5,500
Mali	1,191	1,212	820	1,300	1,300	1,300
Mexico	6,425	6,174	8,500	6,686	7,800	7,800
Niger	807	1,376	1,287	1,000	1,100	1,100
Nigeria	6,900	5,943	6,592	6,700	6,150	6,150
Sudan	4,605	4,524	2,249	6,281	5,500	5,500
Tanzania	807	839	832	840	840	840
Others	7,009	6,676	7,039	6,752	6,927	7,082
Subtotal	51,735	51,432	51,020	52,123	54,267	54,422
United States	5,410	6,293	9,966	10,988	12,828	14,546
World Total	57,145	57,725	60,986	63,111	67,095	68,968
Total Consumption						
Argentina	1,900	2,300	2,700	2,800	2,900	2,900
Australia	1,105	1,105	905	1,205	1,205	1,205
Brazil	2,175	2,300	2,000	2,000	1,900	1,900
Burkina	1,500	1,900	1,900	1,800	1,900	1,900
Cameroon	1,175	1,110	1,165	1,175	1,175	1,175
Chad	650	1,150	850	900	900	900
China	2,200	3,200	6,800	11,100	12,400	13,400
Ethiopia	3,700	3,700	4,200	4,100	4,100	4,100
India	6,000	5,150	5,200	4,900	5,250	5,250
Japan	1,475	1,900	1,000	1,000	1,000	1,000
Mali	1,300	1,200	950	1,200	1,300	1,300
Mexico	8,100	8,100	8,300	7,000	7,700	7,700
Niger	950	1,200	1,300	1,100	1,100	1,100
Nigeria	6,800	5,900	6,550	6,650	6,050	6,050
Sudan	4,500	4,700	2,550	6,000	5,800	5,800
Others	9,447	9,103	8,373	8,064	8,243	8,263
Subtotal	54,468	52,814	55,876	61,819	63,969	65,006
United States	3,916	4,796	4,127	2,546	2,668	3,047
World Total	58,384	57,610	60,003	64,365	66,637	68,053
Ending Stocks						
Argentina	164	781	1,202	602	302	602
Brazil	472	272	151	141	231	231
China	366	326	376	351	526	526
India	223	145	398	238	388	388
Mexico	418	285	647	376	740	526
Nigeria	215	208	200	150	200	200
Sudan	609	588	357	708	478	478
Others	1,601	1,776	1,554	1,503	1,384	1,457
Subtotal	4,068	4,381	4,885	4,069	4,249	4,408
United States	583	385	864	426	679	1,002
World Total	4,651	4,766	5,749	4,495	4,928	5,410

Regional Sorghum Imports, Production, Consumption, and Stocks

Thousand Metric Tons

	2011/12	2012/13	2013/14	2014/15	Jul 2015/16	Aug 2015/16
TY Imports						
North America	1,372	2,036	165	58	100	50
South America	1,199	1,071	239	185	335	185
European Union - 28	126	291	186	125	100	100
Other Europe	0	0	0	0	0	0
Middle East	101	194	231	50	50	50
North Africa	54	0	41	5	5	5
Sub-Saharan Africa	550	593	482	377	365	365
East Asia	1,655	2,650	5,281	9,555	11,055	12,055
Southeast Asia	13	18	41	15	15	15
Others	14	11	16	15	15	15
Total	5,084	6,864	6,682	10,385	12,040	12,840
Production						
North America	11,835	12,467	18,466	17,674	20,628	22,346
Central America	312	339	335	335	335	335
Caribbean	92	92	94	94	94	94
South America	7,124	7,496	7,081	6,422	7,267	7,422
European Union - 28	671	473	703	863	760	760
Middle East	764	814	789	692	635	635
North Africa	847	763	755	756	756	756
Sub-Saharan Africa	24,802	24,783	22,785	26,713	26,041	26,041
East Asia	2,054	2,560	2,704	2,604	2,604	2,604
South Asia	6,175	5,445	5,685	4,935	5,645	5,645
Southeast Asia	54	55	57	55	55	55
Oceania	2,239	2,230	1,282	1,788	2,100	2,100
Others	176	208	250	180	175	175
Total	57,145	57,725	60,986	63,111	67,095	68,968
Domestic Consumption						
North America	12,016	12,896	12,427	9,546	10,368	10,747
Central America	320	325	325	330	340	340
Caribbean	92	92	94	94	94	94
South America	6,004	6,081	5,764	5,822	5,852	5,872
European Union - 28	760	795	880	970	850	850
Middle East	789	1,052	894	879	685	685
North Africa	908	756	794	756	756	756
Sub-Saharan Africa	24,850	25,038	23,420	26,598	26,476	26,476
East Asia	3,771	5,221	7,921	12,160	13,460	14,460
South Asia	6,155	5,305	5,360	5,060	5,410	5,410
Southeast Asia	68	68	61	90	65	65
Oceania	1,105	1,105	905	1,205	1,205	1,205
Others	55	80	25	30	30	30
Total	56,893	58,814	58,870	63,540	65,591	66,990
Ending Stocks						
North America	1,001	670	1,511	802	1,419	1,528
Central America	23	29	32	32	22	22
South America	693	1,117	1,423	863	585	953
European Union - 28	14	5	19	22	22	27
Middle East	56	65	47	35	35	35
North Africa	60	66	68	73	78	78
Sub-Saharan Africa	1,883	2,037	1,577	1,799	1,584	1,584
East Asia	451	413	466	440	614	614
South Asia	223	145	398	238	388	388
Oceania	230	195	187	170	165	165
Others	17	24	21	21	16	16
Total	4,651	4,766	5,749	4,495	4,928	5,410

NOTES: Regional definitions appear on last page of this circular. Imports are reported on a trade year basis. All other data are reported using local marketing years.

World Oats Trade
October/September Year, Thousand Metric Tons

	2011/12	2012/13	2013/14	2014/15	2015/16 Jul	2015/16 Aua
TY Exports						
Argentina	13	2	2	5	5	5
Australia	174	240	270	250	350	350
Canada	1,763	1,351	1,732	1,750	1,600	1,600
Chile	106	42	48	100	100	100
European Union	176	126	291	225	150	150
Russia	18	4	6	10	10	10
Ukraine	2	2	6	25	10	10
Others	7	10	14	10	10	10
Subtotal	2,259	1,777	2,369	2,375	2,235	2,235
United States	28	18	29	25	30	30
World Total	2,287	1,795	2,398	2,400	2,265	2,265
TY Imports						
Algeria	9	7	12	10	10	10
Bosnia and Herzegovina	3	2	3	5	5	5
Canada	11	9	26	10	10	10
China	68	87	116	150	250	250
Colombia	1	1	2	5	5	5
Ecuador	22	19	21	20	20	20
European Union	3	4	3	5	5	5
Japan	54	51	46	50	50	50
Mexico	134	111	93	100	100	100
Norway	49	36	38	40	40	40
Serbia	2	2	2	5	5	5
South Africa	11	11	19	50	25	25
Switzerland	56	44	51	50	50	50
Turkey	4	0	0	5	5	5
Uruguay	8	6	6	5	5	5
Others	7	0	1	0	0	0
Subtotal	442	390	439	510	585	585
Unaccounted	115	50	93	90	80	80
United States	1,730	1,355	1,866	1,800	1,600	1,600
World Total	2,287	1,795	2,398	2,400	2,265	2,265

TY=Trade Year, see Endnotes.

World Oats Production, Consumption, and Stocks
Local Marketing Years, Thousand Metric Tons

	2011/12	2012/13	2013/14	2014/15	2015/16 Jul	2015/16 Aua
Production						
Algeria	67	110	110	110	110	110
Argentina	345	496	445	525	485	485
Australia	1,262	1,121	1,255	1,096	1,300	1,300
Belarus	448	422	352	470	400	400
Brazil	354	361	380	300	300	300
Canada	3,158	2,812	3,906	2,910	3,250	3,250
Chile	451	680	610	500	760	760
China	600	600	580	600	600	600
European Union	7,927	7,909	8,395	7,903	7,838	7,847
Kazakhstan	258	200	305	226	250	250
Mexico	51	84	90	90	90	90
Norway	231	232	214	236	236	236
Russia	5,332	4,027	4,932	5,267	5,000	5,000
Turkey	218	210	210	210	210	210
Ukraine	506	630	467	610	450	450
Others	372	315	328	313	337	337
Subtotal	21,580	20,209	22,579	21,366	21,616	21,625
United States	728	892	938	1,011	1,214	1,240
World Total	22,308	21,101	23,517	22,377	22,830	22,865
Total Consumption						
Algeria	75	119	118	125	120	120
Argentina	350	500	425	525	475	500
Australia	1,100	925	950	875	900	900
Belarus	450	400	375	450	400	400
Brazil	350	350	375	300	290	290
Canada	1,361	1,514	1,740	1,650	1,575	1,575
Chile	325	575	575	450	650	650
China	625	675	700	750	875	875
European Union	7,800	7,700	8,075	7,675	7,775	7,775
Kazakhstan	225	225	275	225	250	250
Mexico	185	195	185	190	190	190
Norway	270	295	245	270	270	270
Russia	5,000	4,300	4,900	5,200	5,100	5,100
Turkey	215	215	215	215	215	215
Ukraine	500	600	475	600	450	450
Others	519	451	497	499	502	502
Subtotal	19,589	19,136	20,345	19,945	20,079	20,104
United States	2,499	2,743	2,757	2,416	2,755	2,755
World Total	22,088	21,879	23,102	22,361	22,834	22,859
Ending Stocks						
Argentina	55	49	67	62	42	42
Australia	134	60	105	76	126	126
Canada	805	506	1,034	604	589	689
Chile	23	62	46	35	45	45
China	127	139	135	135	110	110
European Union	795	901	909	917	835	844
Russia	485	203	229	286	176	176
Others	225	221	199	204	215	200
Subtotal	2,649	2,141	2,724	2,319	2,138	2,232
United States	797	527	359	780	847	873
World Total	3,446	2,668	3,083	3,099	2,985	3,105

Regional Oats Imports, Production, Consumption, and Stocks

Thousand Metric Tons

	2011/12	2012/13	2013/14	2014/15	Jul 2015/16	Aug 2015/16
TY Imports						
North America	1,875	1,475	1,985	1,910	1,710	1,710
South America	31	26	29	30	30	30
European Union - 28	3	4	3	5	5	5
Other Europe	110	84	94	100	100	100
Former Soviet Union - 12	7	0	1	0	0	0
Middle East	4	0	0	5	5	5
North Africa	9	7	12	10	10	10
Sub-Saharan Africa	11	11	19	50	25	25
East Asia	122	138	162	200	300	300
Oceania	0	0	0	0	0	0
Total	2,172	1,745	2,305	2,310	2,185	2,185
Production						
North America	3,937	3,788	4,934	4,011	4,554	4,580
South America	1,191	1,577	1,478	1,350	1,592	1,592
European Union - 28	7,927	7,909	8,395	7,903	7,838	7,847
Other Europe	373	365	348	369	372	372
Former Soviet Union - 12	6,549	5,285	6,062	6,579	6,106	6,106
Middle East	218	210	210	210	210	210
North Africa	163	166	166	166	166	166
Sub-Saharan Africa	57	60	59	55	55	55
East Asia	602	602	582	602	601	601
Oceania	1,291	1,139	1,283	1,132	1,336	1,336
Total	22,308	21,101	23,517	22,377	22,830	22,865
Domestic Consumption						
North America	4,045	4,452	4,682	4,256	4,520	4,520
South America	1,092	1,490	1,452	1,330	1,492	1,517
European Union - 28	7,800	7,700	8,075	7,675	7,775	7,775
Other Europe	478	474	429	461	467	467
Former Soviet Union - 12	6,180	5,531	6,032	6,481	6,206	6,206
Middle East	215	215	215	215	215	215
North Africa	172	175	174	181	176	176
Sub-Saharan Africa	53	72	95	105	80	80
East Asia	685	730	750	800	925	925
Oceania	1,129	943	978	911	936	936
Total	21,849	21,782	22,882	22,415	22,792	22,817
Ending Stocks						
North America	1,605	1,034	1,396	1,387	1,439	1,565
South America	91	129	130	109	104	104
European Union - 28	795	901	909	917	835	844
Other Europe	48	27	41	48	53	53
Former Soviet Union - 12	592	332	345	403	293	278
Middle East	17	12	7	7	7	7
North Africa	1	1	1	1	1	1
Sub-Saharan Africa	29	28	11	11	11	11
East Asia	134	144	138	140	116	116
Oceania	134	60	105	76	126	126
Total	3,446	2,668	3,083	3,099	2,985	3,105

NOTES: Regional definitions appear on last page of this circular. Imports are reported on a trade year basis. All other data are reported using local marketing years.

World Rye Trade
October/September Year, Thousand Metric Tons

	2011/12	2012/13	2013/14	2014/15	2015/16 Jul	2015/16 Aua
TY Exports						
Belarus	25	25	5	5	5	5
Canada	159	178	97	100	100	100
European Union	59	122	201	175	150	150
Russia	284	78	83	110	100	100
Ukraine	9	16	59	25	20	20
Others	4	0	0	0	0	0
Subtotal	540	419	445	415	375	375
United States	8	7	6	5	5	5
World Total	548	426	451	420	380	380
TY Imports						
European Union	302	68	96	90	50	50
Israel	11	34	33	25	25	25
Japan	46	27	37	40	40	40
Korea, South	11	12	8	10	10	10
Norway	11	21	16	15	15	15
Russia	0	25	5	5	5	5
Switzerland	2	9	6	5	5	5
Others	9	2	1	5	0	0
Subtotal	392	198	202	195	150	150
Unaccounted	-18	7	45	0	30	30
United States	174	221	204	225	200	200
World Total	548	426	451	420	380	380

TY=Trade Year, see Endnotes.

World Rye Production, Consumption, and Stocks
Local Marketing Years, Thousand Metric Tons

	2011/12	2012/13	2013/14	2014/15	2015/16 Jul	2015/16 Aug
Production						
Belarus	801	1,082	648	950	800	800
Canada	241	337	223	195	220	220
Chile	59	62	60	70	71	71
European Union	6,900	8,763	10,160	8,849	8,556	8,328
Russia	2,967	2,132	3,360	3,279	3,300	3,300
Turkey	366	370	350	350	350	350
Ukraine	579	676	638	475	350	350
Others	181	182	174	236	185	185
Subtotal	12,094	13,604	15,613	14,404	13,832	13,604
United States	154	166	194	183	217	217
World Total	12,248	13,770	15,807	14,587	14,049	13,821
Total Consumption						
Argentina	45	40	52	97	56	56
Belarus	750	1,000	650	950	800	800
Canada	101	127	107	110	100	100
Chile	59	62	60	70	71	71
European Union	7,400	8,700	9,650	8,850	8,600	8,500
Japan	55	25	40	40	40	40
Kazakhstan	30	50	40	65	50	50
Russia	2,850	2,000	3,100	3,250	3,200	3,200
Turkey	375	375	350	350	350	350
Ukraine	625	625	625	475	375	375
Others	143	170	144	133	134	134
Subtotal	12,404	13,204	14,823	14,384	13,778	13,678
United States	311	387	424	406	444	444
World Total	12,715	13,591	15,247	14,790	14,222	14,122
Ending Stocks						
Belarus	110	167	160	155	150	150
Canada	25	46	44	29	49	49
European Union	747	795	1,213	1,127	983	855
Japan	5	7	4	4	4	4
Russia	129	153	345	269	274	274
Turkey	24	18	18	23	23	23
Ukraine	132	166	128	98	53	53
Others	3	3	6	2	2	2
Subtotal	1,175	1,355	1,918	1,707	1,538	1,410
United States	11	10	7	15	11	11
World Total	1,186	1,365	1,925	1,722	1,549	1,421

Regional Rye Imports, Production, Consumption, and Stocks

Thousand Metric Tons

	2011/12	2012/13	2013/14	2014/15	Jul 2015/16	Aug 2015/16
TY Imports						
North America	174	221	204	225	200	200
South America	0	0	0	0	0	0
European Union - 28	302	68	96	90	50	50
Other Europe	14	32	23	20	20	20
Former Soviet Union - 12	5	25	5	5	5	5
Middle East	14	34	33	30	25	25
Sub-Saharan Africa	0	0	0	0	0	0
East Asia	57	39	45	50	50	50
Oceania	0	0	0	0	0	0
Total	566	419	406	420	350	350
Production						
North America	395	503	417	378	437	437
South America	107	105	115	170	130	130
European Union - 28	6,900	8,763	10,160	8,849	8,556	8,328
Other Europe	62	46	53	52	51	51
Former Soviet Union - 12	4,375	3,940	4,689	4,765	4,500	4,500
Middle East	366	370	350	350	350	350
Sub-Saharan Africa	3	3	3	3	3	3
East Asia	0	0	0	0	0	0
Oceania	40	40	20	20	22	22
Total	12,248	13,770	15,807	14,587	14,049	13,821
Domestic Consumption						
North America	412	514	531	516	544	544
South America	107	105	115	170	130	130
European Union - 28	7,400	8,700	9,650	8,850	8,600	8,500
Other Europe	76	78	77	72	71	71
Former Soviet Union - 12	4,255	3,675	4,415	4,740	4,425	4,425
Middle East	386	409	383	375	375	375
Sub-Saharan Africa	2	3	3	3	3	3
East Asia	66	37	48	50	50	50
Oceania	40	40	20	20	22	22
Total	12,744	13,561	15,242	14,796	14,220	14,120
Ending Stocks						
North America	36	56	51	44	60	60
South America	0	0	0	0	0	0
European Union - 28	747	795	1,213	1,127	983	855
Other Europe	0	0	0	0	0	0
Former Soviet Union - 12	374	489	639	524	479	479
Middle East	24	18	18	23	23	23
Sub-Saharan Africa	0	0	0	0	0	0
East Asia	5	7	4	4	4	4
Oceania	0	0	0	0	0	0
Total	1,186	1,365	1,925	1,722	1,549	1,421

NOTES: Regional definitions appear on last page of this circular. Imports are reported on a trade year basis. All other data are reported using local marketing years.



HISTORICAL DATA SERIES FOR SELECTED REGIONS AND COUNTRIES

CONTENTS

European Union: Grain Supply and Demand	37
China: Grain Supply and Demand	38
Other Europe: Grain Supply and Demand	39
Former Soviet Union: Grain Supply and Demand.....	40
Wheat Supply and Disappearance: Selected Exporters	44
Corn Supply and Disappearance: Selected Exporters.....	46
Barley Supply and Disappearance: Selected Exporters	48
Sorghum Supply and Disappearance: Selected Exporters	49
U.S. Grains: Supply and Distribution.....	50
Total Wheat and Coarse Grains: Supply and Demand	51
World Wheat and Coarse Grains: Supply and Demand	52
World Corn and Barley: Supply and Demand	53
World Rice: Supply and Demand	54

European Union: Grain Supply and Demand

Wheat and Coarse Grains Millions of Metric Tons/Hectares

	Area Harvested	Yield	Production	Imports	Exports	Feed Dom.	Domestic Consumption	Ending Stocks
Wheat								
2004/05	26.2	5.6	147.7	7.1	14.7	59.3	123.9	28.3
2005/06	26.0	5.1	132.9	6.8	15.7	63.0	128.2	24.1
2006/07	24.7	5.1	125.7	5.2	13.9	60.2	126.2	14.8
2007/08	24.9	4.9	120.8	6.8	12.4	52.4	117.2	12.8
2008/09	26.8	5.7	151.9	7.7	25.4	60.5	127.6	19.4
2009/10	26.0	5.4	139.7	5.4	22.3	57.5	125.6	16.6
2010/11	26.0	5.3	136.7	4.6	23.1	52.5	122.8	11.9
2011/12	25.8	5.3	138.2	7.4	16.7	57.5	127.2	13.5
2012/13	26.0	5.2	133.9	5.3	22.8	51.0	119.3	10.7
2013/14	25.9	5.6	144.4	4.0	32.0	49.0	117.2	9.9
2014/15	26.7	5.9	156.4	6.0	35.2	54.5	123.9	13.2
2015/16	26.5	5.6	147.8	6.5	31.0	56.0	124.9	11.7
Coarse Grains								
2004/05	33.9	5.0	169.1	3.0	4.8	118.9	155.2	25.6
2005/06	33.2	4.5	149.5	2.7	4.3	112.4	150.7	22.8
2006/07	32.4	4.3	140.0	8.1	4.5	112.9	150.6	15.7
2007/08	32.6	4.3	138.7	20.3	4.5	121.6	157.1	13.1
2008/09	34.0	4.8	164.9	3.1	5.7	116.1	154.2	21.3
2009/10	32.9	4.8	157.6	2.9	3.0	114.8	152.4	26.3
2010/11	30.2	4.7	142.9	8.5	6.2	116.9	154.6	16.9
2011/12	30.2	5.0	149.9	7.0	6.5	113.2	151.5	15.7
2012/13	31.4	4.7	145.9	11.8	7.4	113.7	153.1	13.1
2013/14	31.4	5.1	159.0	16.2	8.6	122.4	164.1	15.6
2014/15	30.8	5.5	169.7	9.3	13.6	120.8	163.1	17.9
2015/16	30.9	4.9	151.9	15.4	9.8	119.5	161.8	13.6
Wheat and Coarse Grains								
2004/05	60.1	5.3	316.8	10.0	19.5	178.2	279.1	54.0
2005/06	59.1	4.8	282.3	9.4	20.0	175.4	278.9	46.9
2006/07	57.0	4.7	265.7	13.2	18.5	173.1	276.8	30.5
2007/08	57.5	4.5	259.5	27.1	16.9	174.1	274.2	25.9
2008/09	60.9	5.2	316.9	10.8	31.1	176.6	281.8	40.7
2009/10	58.9	5.0	297.3	8.2	25.3	172.3	278.0	42.9
2010/11	56.2	5.0	279.5	13.1	29.3	169.4	277.5	28.8
2011/12	56.0	5.1	288.1	14.3	23.3	170.7	278.7	29.3
2012/13	57.3	4.9	279.9	17.1	30.1	164.7	272.3	23.8
2013/14	57.3	5.3	303.4	20.2	40.7	171.4	281.3	25.5
2014/15	57.5	5.7	326.2	15.3	48.8	175.3	287.0	31.2
2015/16	57.3	5.2	299.7	21.9	40.8	175.5	286.7	25.3

China: Grain Supply and Demand

Wheat and Coarse Grains Millions of Metric Tons/Hectares

	Area Harvested	Yield	Production	Imports	Exports	Feed Dom.	Domestic Consumption	Ending Stocks
Wheat								
2004/05	21.6	4.3	92.0	6.7	1.2	4.0	102.0	38.8
2005/06	22.8	4.3	97.4	1.1	1.4	3.5	101.5	34.5
2006/07	23.6	4.6	108.5	0.4	2.8	4.0	102.0	38.6
2007/08	23.7	4.6	109.3	0.0	2.8	8.0	106.0	39.1
2008/09	23.6	4.8	112.5	0.5	0.7	8.0	105.5	45.8
2009/10	24.3	4.7	115.1	1.4	0.9	10.0	107.0	54.4
2010/11	24.3	4.7	115.2	0.9	0.9	13.0	110.5	59.1
2011/12	24.3	4.8	117.4	2.9	1.0	24.0	122.5	55.9
2012/13	24.3	5.0	121.0	3.0	1.0	25.0	125.0	54.0
2013/14	24.1	5.1	121.9	6.8	0.9	16.0	116.5	65.3
2014/15	24.1	5.2	126.2	1.9	0.8	17.0	118.0	74.6
2015/16	24.2	5.4	130.0	2.2	1.0	15.0	116.5	89.3
Coarse Grains								
2004/05	28.0	4.9	138.3	2.1	7.6	100.3	141.1	37.6
2005/06	28.8	5.1	147.8	2.3	3.8	103.5	147.1	36.9
2006/07	31.1	5.1	159.0	1.2	5.5	105.0	153.5	38.0
2007/08	31.9	5.0	159.2	1.2	0.9	106.7	157.9	39.5
2008/09	32.2	5.4	172.4	1.7	0.2	109.1	161.2	52.2
2009/10	33.4	5.1	169.8	3.8	0.2	119.1	173.3	52.3
2010/11	34.6	5.3	183.8	2.7	0.2	128.8	188.4	50.1
2011/12	35.5	5.6	198.6	7.9	0.1	132.0	196.2	60.4
2012/13	37.1	5.7	212.2	5.6	0.1	146.1	209.7	68.4
2013/14	38.4	5.9	225.1	12.4	0.0	161.8	227.6	78.3
2014/15	39.1	5.7	222.2	21.3	0.1	171.4	239.5	82.2
2015/16	39.8	5.8	231.5	21.3	0.1	173.1	243.5	91.4
Wheat and Coarse Grains								
2004/05	49.6	4.6	230.2	8.8	8.8	104.3	243.1	76.4
2005/06	51.6	4.8	245.3	3.4	5.2	107.0	248.6	71.4
2006/07	54.7	4.9	267.4	1.5	8.2	109.0	255.5	76.6
2007/08	55.6	4.8	268.5	1.2	3.7	114.7	263.9	78.6
2008/09	55.8	5.1	284.9	2.1	0.9	117.1	266.7	98.0
2009/10	57.6	4.9	284.9	5.2	1.1	129.1	280.3	106.7
2010/11	58.9	5.1	299.0	3.6	1.1	141.8	298.9	109.2
2011/12	59.8	5.3	316.0	10.9	1.1	156.0	318.7	116.3
2012/13	61.3	5.4	333.2	8.6	1.1	171.1	334.7	122.3
2013/14	62.5	5.6	347.0	19.2	0.9	177.8	344.1	143.5
2014/15	63.1	5.5	348.3	23.2	0.9	188.4	357.5	156.7
2015/16	64.0	5.7	361.5	23.5	1.1	188.1	360.0	180.6

Other Europe: Grain Supply and Demand

Wheat and Coarse Grains Millions of Metric Tons/Hectares

	Area Harvested	Yield	Production	Imports	Exports	Feed Dom.	Domestic Consumption	Ending Stocks
Wheat								
2004/05	1.1	4.3	4.6	1.4	0.3	0.9	5.2	1.3
2005/06	1.0	3.8	3.8	1.4	0.2	0.9	5.1	1.1
2006/07	1.0	3.6	3.5	1.5	0.3	0.7	4.6	1.2
2007/08	1.0	3.8	3.7	1.9	0.5	1.0	4.8	1.5
2008/09	0.9	4.4	4.0	1.7	0.4	1.2	5.1	1.7
2009/10	1.0	3.9	3.8	1.7	0.5	1.0	4.9	1.7
2010/11	0.9	3.7	3.2	1.7	0.6	0.8	4.7	1.3
2011/12	0.9	4.2	3.6	1.9	0.5	1.0	4.9	1.5
2012/13	0.9	4.0	3.4	1.7	0.7	1.0	4.7	1.1
2013/14	0.9	4.4	4.1	1.9	1.3	1.1	4.8	1.1
2014/15	0.9	4.2	3.9	1.8	0.7	1.1	4.8	1.2
2015/16	1.0	4.1	3.9	1.9	1.1	1.1	4.9	1.1
Coarse Grains								
2004/05	2.1	5.0	10.4	0.5	0.6	8.4	9.5	1.5
2005/06	2.1	4.8	10.1	0.6	1.3	8.5	9.7	1.3
2006/07	2.0	4.9	9.8	0.8	0.9	8.5	9.6	1.3
2007/08	2.0	3.4	6.9	0.9	0.1	6.8	7.9	1.1
2008/09	2.1	4.6	9.7	0.6	1.5	7.6	8.7	1.1
2009/10	2.0	4.9	9.7	0.7	1.4	7.5	8.7	1.4
2010/11	2.0	5.0	10.0	0.7	2.0	7.3	8.7	1.5
2011/12	2.1	4.6	9.5	0.8	2.4	7.0	8.4	1.0
2012/13	2.1	3.2	6.6	0.7	0.6	5.9	7.1	0.6
2013/14	2.0	4.4	8.8	0.9	1.8	6.3	7.7	0.8
2014/15	1.9	5.5	10.7	0.9	3.0	6.6	8.0	1.3
2015/16	1.9	4.5	8.7	0.8	1.8	6.5	8.0	1.0
Wheat and Coarse Grains								
2004/05	3.2	4.8	15.1	1.9	0.9	9.3	14.8	2.8
2005/06	3.1	4.5	13.9	2.0	1.4	9.4	14.8	2.4
2006/07	3.0	4.5	13.3	2.3	1.2	9.2	14.2	2.5
2007/08	3.0	3.5	10.6	2.7	0.6	7.8	12.6	2.6
2008/09	3.0	4.6	13.7	2.3	1.9	8.8	13.8	2.8
2009/10	3.0	4.5	13.5	2.4	1.9	8.5	13.7	3.2
2010/11	2.9	4.6	13.2	2.4	2.6	8.1	13.4	2.7
2011/12	2.9	4.5	13.1	2.7	2.8	8.1	13.2	2.5
2012/13	2.9	3.4	10.0	2.4	1.3	7.0	11.8	1.8
2013/14	2.9	4.4	12.9	2.8	3.1	7.4	12.5	1.8
2014/15	2.9	5.1	14.6	2.7	3.7	7.7	12.9	2.5
2015/16	2.9	4.4	12.7	2.8	2.9	7.7	12.9	2.1

Former Soviet Union: Grain Supply and Demand
Wheat and Coarse Grains Millions of Metric Tons/Hectares

	Area Harvested	Yield	Production	Imports	Exports	Feed Dom.	Domestic Consumpti	Ending Stocks
Wheat								
2009/10	52.6	2.2	114.0	5.4	37.3	26.5	78.3	25.8
2010/11	45.8	1.8	81.0	5.5	13.9	24.4	75.7	22.7
2011/12	49.7	2.3	115.0	8.0	39.7	28.3	80.0	26.0
2012/13	44.0	1.8	77.8	7.2	25.4	21.5	71.7	13.9
2013/14	47.7	2.2	103.9	7.4	37.1	22.8	72.9	15.1
2014/15	46.6	2.4	112.7	7.8	40.7	24.6	75.9	19.1
2015/16	48.9	2.4	115.0	7.1	42.4	25.3	77.6	21.2
Coarse Grains								
2009/10	27.2	2.5	67.6	0.4	15.0	39.0	55.0	7.4
2010/11	21.9	2.2	47.5	1.2	8.8	28.4	41.8	5.5
2011/12	27.0	2.9	78.6	1.0	24.6	38.6	54.4	6.2
2012/13	27.5	2.5	68.2	0.7	19.9	35.6	50.2	5.0
2013/14	29.4	3.0	87.6	0.8	30.9	40.0	55.6	7.0
2014/15	30.3	3.0	91.5	0.8	33.0	42.1	58.3	7.9
2015/16	28.6	3.0	87.1	0.8	31.0	42.4	58.6	6.2

Former Soviet Union: Grain Supply and Demand (Wheat)

Millions of Tons/Hectares

Country Mktg Year	Area Harvested	Yield	Production	MY Imports	MY Exports	Feed and Residual	Total Consumption	Ending Stocks
Former Soviet Union - 12								
Kazakhstan								
2012/13	12.4	0.8	9.8	0.0	6.3	2.0	6.8	2.9
2013/14	13.0	1.1	13.9	0.0	8.1	2.0	6.8	2.0
2014/15	11.9	1.1	13.0	0.6	6.0	2.0	6.8	2.8
2015/16	11.5	1.2	14.0	0.0	6.0	2.0	6.8	4.0
Russia								
2012/13	21.3	1.8	37.7	1.2	11.3	11.9	33.6	5.0
2013/14	23.4	2.2	52.1	0.8	18.6	12.5	34.1	5.2
2014/15	23.6	2.5	59.1	0.4	22.7	13.0	35.5	6.4
2015/16	25.7	2.3	60.0	0.4	23.0	13.5	36.5	7.3
Ukraine								
2012/13	5.6	2.8	15.8	0.0	7.2	3.1	11.4	2.6
2013/14	6.6	3.4	22.3	0.1	9.8	3.4	11.5	3.7
2014/15	6.3	3.9	24.8	0.1	11.3	4.0	12.0	5.2
2015/16	7.0	3.6	25.5	0.1	13.0	4.5	12.7	5.0
Uzbekistan								
2012/13	1.4	4.8	6.7	1.9	0.4	1.7	8.0	1.6
2013/14	1.4	4.9	6.8	2.2	0.3	1.9	8.4	1.9
2014/15	1.4	5.1	7.2	2.2	0.2	2.2	8.9	2.2
2015/16	1.4	5.1	7.2	2.2	0.2	2.2	9.1	2.3
Other Former Soviet Union - 12								
2012/13	3.2	2.4	7.8	4.1	0.3	2.8	12.0	1.9
2013/14	3.4	2.6	8.8	4.3	0.4	3.0	12.1	2.4
2014/15	3.4	2.6	8.8	4.5	0.5	3.4	12.7	2.5
2015/16	3.3	2.5	8.3	4.5	0.2	3.1	12.5	2.6
Total Former Soviet Union - 12								
2012/13	44.0	1.8	77.8	7.2	25.4	21.5	71.7	13.9
2013/14	47.7	2.2	103.9	7.4	37.1	22.8	72.9	15.1
2014/15	46.6	2.4	112.7	7.8	40.7	24.6	75.9	19.1
2015/16	48.9	2.4	115.0	7.1	42.4	25.3	77.6	21.2

Former Soviet Union: Grain Supply and Demand (Barley)

Millions of Tons/Hectares

Country Mktg Year	Area Harvested	Yield	Production	MY Imports	MY Exports	Feed and Residual	Total Consumption	Ending Stocks
Former Soviet Union - 12								
Kazakhstan								
2012/13	1.6	0.9	1.5	0.0	0.2	1.2	1.4	0.2
2013/14	1.8	1.4	2.5	0.0	0.5	1.7	2.0	0.2
2014/15	1.9	1.3	2.4	0.0	0.5	1.6	1.9	0.2
2015/16	2.0	1.3	2.6	0.0	0.5	1.8	2.1	0.2
Russia								
2012/13	7.6	1.8	14.0	0.3	2.2	7.7	12.1	0.7
2013/14	8.0	1.9	15.4	0.2	2.7	8.3	12.7	0.9
2014/15	8.8	2.3	20.0	0.1	5.3	9.2	14.1	1.7
2015/16	8.0	2.1	17.0	0.1	4.0	9.2	14.0	0.8
Ukraine								
2012/13	3.3	2.1	6.9	0.0	2.1	3.5	5.1	0.9
2013/14	3.2	2.3	7.6	0.0	2.5	3.5	5.0	1.0
2014/15	3.2	3.0	9.5	0.0	4.7	3.0	4.5	1.2
2015/16	2.9	2.9	8.3	0.0	4.5	2.8	4.3	0.7
Uzbekistan								
2012/13	0.1	3.2	0.2	0.0	0.0	0.2	0.3	0.0
2013/14	0.1	3.2	0.2	0.0	0.0	0.2	0.3	0.0
2014/15	0.1	3.2	0.2	0.1	0.0	0.2	0.3	0.0
2015/16	0.1	3.2	0.2	0.1	0.0	0.3	0.3	0.0
Other Former Soviet Union - 12								
2012/13	1.2	2.8	3.3	0.1	0.0	2.7	3.5	0.4
2013/14	1.4	2.5	3.4	0.1	0.0	2.7	3.5	0.4
2014/15	1.4	2.6	3.6	0.2	0.0	2.9	3.7	0.5
2015/16	1.4	2.6	3.5	0.2	0.0	3.0	3.8	0.3
Total Former Soviet Union - 12								
2012/13	13.8	1.9	26.0	0.4	4.6	15.2	22.3	2.2
2013/14	14.5	2.0	29.2	0.3	5.7	16.4	23.5	2.6
2014/15	15.4	2.3	35.8	0.4	10.5	16.9	24.5	3.6
2015/16	14.3	2.2	31.6	0.3	9.0	17.1	24.6	2.0

Former Soviet Union: Grain Supply and Demand (Corn)

Millions of Tons/Hectares

Country Mktg Year	Area Harvested	Yield	Production	MY Imports	MY Exports	Feed and Residual	Total Consumption	Ending Stocks
Former Soviet Union - 12								
Kazakhstan								
2012/13	0.1	5.0	0.5	0.0	0.0	0.4	0.5	0.0
2013/14	0.1	5.3	0.6	0.0	0.0	0.5	0.6	0.0
2014/15	0.1	5.3	0.7	0.0	0.0	0.5	0.6	0.1
2015/16	0.1	5.0	0.5	0.0	0.0	0.5	0.6	0.0
Russia								
2012/13	1.9	4.2	8.2	0.1	1.9	5.6	6.4	0.3
2013/14	2.3	5.0	11.6	0.1	4.2	6.6	7.5	0.3
2014/15	2.6	4.4	11.3	0.1	2.9	7.4	8.4	0.4
2015/16	2.7	5.0	13.5	0.1	4.0	8.3	9.3	0.6
Ukraine								
2012/13	4.4	4.8	20.9	0.0	12.7	6.8	8.1	1.2
2013/14	4.8	6.4	30.9	0.1	20.0	8.3	9.7	2.5
2014/15	4.6	6.2	28.5	0.1	19.0	8.3	9.7	2.3
2015/16	4.1	6.6	27.0	0.1	17.5	8.1	9.5	2.3
Uzbekistan								
2012/13	0.0	3.4	0.1	0.0	0.0	0.1	0.1	0.0
2013/14	0.0	3.4	0.1	0.0	0.0	0.1	0.2	0.0
2014/15	0.0	3.4	0.1	0.0	0.0	0.1	0.2	0.0
2015/16	0.0	3.4	0.1	0.0	0.0	0.1	0.1	0.0
Other Former Soviet Union - 12								
2012/13	1.0	2.7	2.6	0.2	0.4	2.6	3.0	0.5
2013/14	1.0	3.8	3.7	0.3	0.6	2.9	3.2	0.6
2014/15	0.8	3.5	2.9	0.3	0.3	2.7	3.0	0.6
2015/16	0.9	3.2	2.8	0.4	0.2	2.8	3.2	0.5
Total Former Soviet Union - 12								
2012/13	7.4	4.4	32.3	0.3	15.0	15.5	18.1	2.0
2013/14	8.3	5.7	46.9	0.5	24.8	18.4	21.1	3.4
2014/15	8.2	5.3	43.5	0.5	22.2	19.0	21.8	3.3
2015/16	7.8	5.6	44.0	0.5	21.7	19.8	22.7	3.4

Wheat Supply and Disappearance: Selected Exporters
Million Metric Tons/Hectares

Country Mktg Year	Area Harvested	Yield	Production	MY Imports	MY Exports	Feed and Residual	Total Consumption	Ending Stocks
Wheat Competitors								
Argentina								
2007/08	6.6	2.8	18.6	0.0	11.2	0.1	5.7	2.4
2008/09	5.3	2.1	11.0	0.0	6.8	0.0	5.3	1.3
2009/10	4.0	3.0	12.0	0.0	5.1	0.0	5.8	2.3
2010/11	4.8	3.6	17.2	0.0	9.5	0.1	6.0	4.1
2011/12	5.2	3.0	15.5	0.0	12.9	0.1	6.0	0.7
2012/13	3.6	2.6	9.3	0.0	3.6	0.3	6.2	0.3
2013/14	3.5	3.0	10.5	0.0	2.3	0.1	6.1	2.5
2014/15	4.2	3.0	12.5	0.0	5.5	0.3	6.4	3.2
2015/16	3.7	3.0	11.1	0.0	5.5	0.1	6.2	2.7
Australia								
2007/08	12.6	1.1	13.6	0.1	7.5	3.5	6.6	3.7
2008/09	13.5	1.6	21.4	0.1	14.7	4.2	7.4	3.1
2009/10	13.9	1.6	21.8	0.1	14.8	1.9	5.2	5.1
2010/11	13.5	2.0	27.4	0.1	18.6	2.5	5.8	8.2
2011/12	13.9	2.2	29.9	0.1	24.7	3.2	6.5	7.1
2012/13	13.0	1.8	22.9	0.1	18.6	3.4	6.7	4.7
2013/14	12.6	2.0	25.3	0.2	18.6	3.6	7.0	4.6
2014/15	13.8	1.7	23.7	0.2	17.0	3.8	7.2	4.2
2015/16	13.8	1.9	26.0	0.2	18.5	3.9	7.3	4.5
Canada								
2007/08	8.6	2.3	20.1	0.4	16.1	2.2	6.9	4.4
2008/09	10.0	2.9	28.6	0.4	18.9	3.1	7.8	6.6
2009/10	9.7	2.8	27.0	0.4	19.0	2.5	7.2	7.7
2010/11	8.3	2.8	23.3	0.4	16.6	2.7	7.6	7.4
2011/12	8.6	3.0	25.3	0.5	17.4	4.7	9.9	5.9
2012/13	9.5	2.9	27.2	0.5	19.0	4.4	9.6	5.1
2013/14	10.4	3.6	37.5	0.4	23.3	4.2	9.4	10.4
2014/15	9.5	3.1	29.3	0.5	24.0	6.0	11.3	4.8
2015/16	9.6	2.8	26.5	0.5	18.0	3.8	9.0	4.8
Total Wheat Competitors								
2007/08	27.8	1.9	52.3	0.5	34.8	5.8	19.1	10.5
2008/09	28.8	2.1	61.0	0.5	40.4	7.3	20.6	11.0
2009/10	27.5	2.2	60.8	0.5	39.0	4.4	18.2	15.1
2010/11	26.6	2.5	67.9	0.6	44.7	5.3	19.3	19.7

Wheat Supply and Disappearance: Selected Exporters (Continued)

Million Metric Tons/Hectares

Country Mktg Year	Area Harvested	Yield	Production	MY Imports	MY Exports	Feed and Residual	Total Consumption	Ending Stocks
2011/12	27.6	2.6	70.7	0.6	54.9	8.0	22.3	13.7
2012/13	26.1	2.3	59.4	0.6	41.2	8.1	22.6	10.0
2013/14	26.6	2.8	73.3	0.6	44.1	7.9	22.4	17.4
2014/15	27.5	2.4	65.5	0.7	46.5	10.1	24.9	12.2
2015/16	27.1	2.3	63.6	0.6	42.0	7.8	22.5	11.9
India								
2007/08	28.0	2.7	75.8	2.0	0.0	2.5	76.4	5.8
2008/09	28.2	2.8	78.6	0.0	0.0	2.5	70.9	13.4
2009/10	27.8	2.9	80.7	0.2	0.1	2.8	78.2	16.1
2010/11	28.5	2.8	80.8	0.3	0.1	2.9	81.8	15.4
2011/12	29.1	3.0	86.9	0.0	0.9	3.1	81.4	20.0
2012/13	29.9	3.2	94.9	0.0	6.8	3.4	83.8	24.2
2013/14	30.0	3.1	93.5	0.0	6.1	4.8	93.9	17.8
2014/15	31.5	3.0	95.9	0.1	3.4	4.5	93.1	17.2
2015/16	30.6	2.9	90.0	0.8	0.3	4.8	95.8	11.9
Turkey								
2007/08	7.7	2.0	15.5	2.2	1.7	0.8	16.8	1.1
2008/09	7.7	2.2	16.8	3.5	2.2	0.7	16.9	2.2
2009/10	7.8	2.4	18.5	3.2	4.3	0.8	17.1	2.5
2010/11	8.0	2.1	17.0	3.7	3.0	0.8	17.3	2.9
2011/12	7.7	2.4	18.8	3.8	3.7	1.4	18.1	3.8
2012/13	7.8	2.1	16.0	3.6	3.4	0.9	17.7	2.3
2013/14	7.7	2.4	18.8	4.0	4.4	1.0	17.8	2.9
2014/15	7.7	2.0	15.3	6.0	4.1	0.7	17.5	2.6
2015/16	7.9	2.5	19.5	3.8	4.0	1.2	18.0	3.9

Corn Supply and Disappearance: Selected Exporters
Million Metric Tons/Hectares

Country Mktg Year	Area Harvested	Yield	Production	MY Imports	MY Exports	Feed and Residual	Total Consumption	Ending Stocks
Argentina								
2007/08	3.4	6.5	22.0	0.0	14.8	4.9	6.8	2.1
2008/09	2.5	6.2	15.5	0.0	10.3	4.5	6.4	0.9
2009/10	3.0	8.3	25.0	0.0	16.5	5.0	6.9	2.5
2010/11	3.8	6.7	25.2	0.0	16.3	5.3	7.3	4.0
2011/12	3.6	5.8	21.0	0.0	17.1	4.8	7.0	0.9
2012/13	4.0	6.8	27.0	0.0	18.7	5.3	7.9	1.3
2013/14	3.4	7.6	26.0	0.0	17.1	5.8	8.8	1.4
2014/15	3.2	8.3	26.5	0.0	17.0	6.1	9.4	1.5
2015/16	3.1	8.1	25.0	0.0	15.5	6.5	10.0	1.0
Brazil								
2007/08	14.7	4.0	58.6	0.7	7.8	36.0	42.5	12.6
2008/09	14.1	3.6	51.0	1.1	7.1	38.5	45.5	12.1
2009/10	12.9	4.3	56.1	0.4	11.6	40.0	47.0	10.0
2010/11	13.8	4.2	57.4	0.8	8.4	42.5	49.5	10.3
2011/12	15.2	4.8	73.0	0.8	24.3	43.0	50.5	9.2
2012/13	15.8	5.2	81.5	0.9	24.9	44.5	52.5	14.2
2013/14	15.8	5.1	80.0	0.8	21.0	46.0	55.0	19.0
2014/15	15.5	5.4	84.0	0.8	27.0	48.0	57.0	19.8
2015/16	15.3	5.2	79.0	0.8	24.0	50.0	59.0	16.6
China								
2007/08	29.5	5.2	152.3	0.0	0.5	106.0	150.0	38.4
2008/09	29.9	5.6	165.9	0.0	0.2	108.0	153.0	51.2
2009/10	31.2	5.3	164.0	1.3	0.2	118.0	165.0	51.3
2010/11	32.5	5.5	177.2	1.0	0.1	128.0	180.0	49.4
2011/12	33.5	5.7	192.8	5.2	0.1	131.0	188.0	59.3
2012/13	35.0	5.9	205.6	2.7	0.1	144.0	200.0	67.6
2013/14	36.3	6.0	218.5	3.3	0.0	154.0	212.0	77.3
2014/15	37.1	5.8	215.7	4.3	0.0	156.0	216.0	81.3
2015/16	37.9	5.9	225.0	3.0	0.1	157.0	219.0	90.2
South Africa								
2007/08	3.3	4.0	13.2	0.0	2.2	4.8	10.1	1.4
2008/09	2.9	4.3	12.6	0.0	1.7	4.7	10.3	2.0
2009/10	3.3	4.1	13.4	0.0	2.1	4.9	10.6	2.8
2010/11	2.9	3.8	10.9	0.4	2.4	5.0	10.7	1.0
2011/12	3.1	4.1	12.8	0.0	1.8	5.0	10.7	1.3
2012/13	3.2	3.8	12.4	0.1	2.1	5.1	11.0	0.7

Corn Supply and Disappearance: Selected Exporters (Continued)

Million Metric Tons/Hectares

Country Mktg Year	Area Harvested	Yield	Production	MY Imports	MY Exports	Feed and Residual	Total Consumption	Ending Stocks
2013/14	3.1	4.8	15.0	0.1	2.0	5.4	11.5	2.3
2014/15	3.1	3.6	11.3	0.3	0.7	5.4	11.4	1.7
2015/16	3.2	4.2	13.5	0.0	1.5	5.5	11.4	2.3
Total Corn Competitors								
2007/08	50.9	4.8	246.1	0.8	25.3	151.7	209.4	54.5
2008/09	49.4	5.0	245.0	1.2	19.3	155.7	215.2	66.2
2009/10	50.4	5.1	258.5	1.7	30.3	167.9	229.5	66.5
2010/11	52.9	5.1	270.8	2.2	27.3	180.8	247.5	64.7
2011/12	55.5	5.4	299.5	6.0	43.4	183.8	256.2	70.7
2012/13	58.1	5.6	326.5	3.7	45.8	198.9	271.4	83.7
2013/14	58.6	5.8	339.5	4.1	40.0	211.2	287.3	100.0
2014/15	58.9	5.7	337.5	5.4	44.7	215.5	293.8	104.3
2015/16	59.5	5.8	342.5	3.8	41.1	219.0	299.4	110.1

Barley Supply and Disappearance: Selected Exporters
Million Metric Tons/Hectares

Country Mktg Year	Area Harvested	Yield	Production	MY Imports	MY Exports	Feed and Residual	Total Consumption	Ending Stocks
Australia								
2007/08	4.9	1.5	7.2	0.0	3.4	2.1	3.1	1.7
2008/09	5.0	1.6	8.0	0.0	3.2	2.9	4.0	2.4
2009/10	4.4	1.8	7.9	0.0	3.9	3.3	4.5	1.9
2010/11	3.7	2.2	8.0	0.0	4.7	3.0	4.2	1.0
2011/12	3.7	2.2	8.2	0.0	5.4	2.1	3.3	0.5
2012/13	3.6	2.1	7.5	0.0	4.5	1.8	3.0	0.5
2013/14	3.8	2.4	9.2	0.0	6.2	1.5	2.8	0.7
2014/15	3.8	2.1	8.0	0.0	5.6	1.3	2.6	0.5
2015/16	4.0	2.2	8.7	0.0	6.0	1.3	2.6	0.6
Canada								
2007/08	4.0	2.8	10.9	0.1	3.0	6.4	7.8	1.6
2008/09	3.5	3.4	11.8	0.0	1.5	7.6	8.9	3.0
2009/10	2.9	3.3	9.5	0.0	1.3	7.5	8.7	2.5
2010/11	2.4	3.2	7.6	0.0	1.2	6.3	7.5	1.5
2011/12	2.4	3.3	7.9	0.0	1.3	5.7	6.9	1.2
2012/13	2.8	2.9	8.0	0.0	1.4	5.7	6.8	1.0
2013/14	2.7	3.9	10.2	0.0	1.6	6.5	7.7	2.0
2014/15	2.1	3.3	7.1	0.1	1.5	5.2	6.4	1.3
2015/16	2.4	2.8	6.5	0.2	1.0	5.0	6.2	0.8
European Union								
2007/08	13.9	4.2	57.8	0.3	3.8	38.9	54.5	5.7
2008/09	14.6	4.5	65.8	0.3	3.6	41.7	57.3	11.0
2009/10	14.0	4.5	62.4	0.1	1.1	41.7	56.8	15.6
2010/11	12.5	4.3	53.7	0.2	4.9	41.3	56.6	7.9
2011/12	11.9	4.3	51.9	0.5	3.0	35.8	51.2	6.1
2012/13	12.5	4.4	54.9	0.1	4.9	35.5	51.0	5.1
2013/14	12.4	4.8	59.7	0.0	5.7	38.0	53.4	5.7
2014/15	12.4	4.8	60.2	0.1	9.4	35.5	51.0	5.6
2015/16	12.5	4.6	57.2	0.2	7.5	35.0	50.5	5.0

Sorghum Supply and Disappearance: Selected Exporters

Million Metric Tons/Hectares

Country Mktg Year	Area Harvested	Yield	Production	MY Imports	MY Exports	Feed and Residual	Total Consumption	Ending Stocks
Argentina								
2007/08	0.6	4.7	2.9	0.0	1.2	1.0	1.2	0.7
2008/09	0.5	3.7	1.7	0.0	1.1	1.0	1.1	0.2
2009/10	0.8	4.8	3.6	0.0	1.8	1.7	1.9	0.2
2010/11	1.0	4.4	4.4	0.0	1.7	1.7	1.9	0.9
2011/12	1.0	4.2	4.2	0.0	3.1	1.7	1.9	0.2
2012/13	1.1	4.5	4.7	0.0	1.8	2.0	2.3	0.8
2013/14	1.0	4.4	4.4	0.0	1.3	2.3	2.7	1.2
2014/15	0.8	4.4	3.5	0.0	1.3	2.4	2.8	0.6
2015/16	1.0	4.5	4.5	0.0	1.6	2.5	2.9	0.6
Australia								
2007/08	0.9	4.0	3.8	0.0	0.8	2.2	2.2	0.8
2008/09	0.8	3.5	2.7	0.0	1.0	1.8	1.8	0.7
2009/10	0.5	3.0	1.5	0.0	0.3	1.2	1.2	0.7
2010/11	0.6	3.1	1.9	0.0	0.9	1.4	1.4	0.4
2011/12	0.7	3.4	2.2	0.0	1.3	1.1	1.1	0.2
2012/13	0.6	3.4	2.2	0.0	1.2	1.1	1.1	0.2
2013/14	0.5	2.4	1.3	0.0	0.4	0.9	0.9	0.2
2014/15	0.6	3.0	1.8	0.0	0.6	1.2	1.2	0.2
2015/16	0.7	3.0	2.1	0.0	0.9	1.2	1.2	0.2

U.S. Grains Supply and Distribution: Wheat, Corn, Sorghum, Barley, Oats, Rye, and Rice

Thousand Metric Tons/Hectares

	Area Harvested	Yield	Rough Production	Production	Imports	TY Imports	Exports	TY Exports	Feed Dom. Consumption	Domestic Consumption	Ending Stocks
Wheat											
2013/14	18,345	3	nr	58,105	4,591	4,785	32,001	31,518	6,077	34,168	16,065
2014/15	18,770	3	nr	55,129	3,932	3,987	23,249	22,752	3,121	31,394	20,483
2015/16	19,609	3	nr	58,133	3,402	3,350	25,174	25,500	5,443	33,720	23,124
Corn											
2013/14	35,390	10	nr	351,272	909	727	48,783	50,684	127,769	292,965	31,292
2014/15	33,644	11	nr	361,091	762	750	46,992	46,000	134,626	301,131	45,022
2015/16	32,821	11	nr	347,642	762	750	46,992	47,000	134,626	302,909	43,525
Sorghum											
2013/14	2,665	4	nr	9,966	2	3	5,362	5,717	2,351	4,127	864
2014/15	2,590	4	nr	10,988	10	8	8,890	9,000	2,159	2,546	426
2015/16	3,105	5	nr	14,546	0	0	10,923	11,000	2,667	3,047	1,002
Barley											
2013/14	1,230	4	nr	4,719	408	522	311	336	1,440	4,775	1,791
2014/15	989	4	nr	3,849	513	450	312	300	833	4,129	1,712
2015/16	1,181	4	nr	4,565	435	500	327	300	1,306	4,636	1,749
Oats											
2013/14	408	2	nr	938	1,674	1,866	23	29	1,694	2,757	359
2014/15	416	2	nr	1,011	1,852	1,800	26	25	1,299	2,416	780
2015/16	494	3	nr	1,240	1,637	1,600	29	30	1,637	2,755	873
Rye											
2013/14	113	2	nr	194	234	204	7	6	184	424	7
2014/15	104	2	nr	183	237	225	6	5	164	406	15
2015/16	127	2	nr	217	229	200	6	5	201	444	11
Rice, Milled											
2013/14	999	9	8,615	6,117	734	755	3,005	2,998	nr	3,977	1,025
2014/15	1,181	8	10,026	7,068	794	800	3,230	3,400	nr	4,126	1,531
2015/16	1,110	8	9,300	6,510	810	820	3,397	3,450	nr	4,108	1,346

Notes: Wheat Trade Year (TY) statistics are on July/June years. Barley, corn, sorghum, rye and oats Trade Year (TY) statistics are on Oct/Sept years. Rice Trade Year (TY) statistics are for the subsequent calendar year; 'Imports' and 'Exports' columns contain data on the local marketing year: wheat, barley, oats and rye are June/May; corn and sorghum are Sept/Aug; rice is Aug/July.

Total Wheat and Coarse Grains: Supply and Demand

Millions of Metric Tons/Hectares

	Area Harvested	Yield	Production	TY Exports	Feed Dom.	Domestic Consumption	Ending Stocks
Wheat and Coarse Grains							
1986/87	565.2	2.4	1,347.9	174.7	645.6	1,299.4	469.2
1987/88	544.3	2.4	1,285.9	202.2	656.5	1,329.8	423.1
1988/89	541.9	2.2	1,218.1	203.3	619.4	1,302.0	339.3
1989/90	548.2	2.4	1,327.4	208.9	644.4	1,346.2	320.5
1990/91	545.7	2.6	1,417.6	190.1	669.7	1,369.8	368.4
1991/92	543.3	2.5	1,355.7	207.5	653.4	1,366.1	357.9
1992/93	545.9	2.6	1,431.7	205.2	664.1	1,388.4	398.4
1993/94	536.0	2.5	1,356.6	188.2	657.0	1,389.2	365.8
1994/95	534.1	2.6	1,392.8	200.1	670.3	1,395.6	363.0
1995/96	527.2	2.5	1,338.8	187.5	641.6	1,381.8	320.0
1996/97	546.0	2.7	1,490.5	198.3	674.4	1,442.0	368.5
1997/98	535.3	2.8	1,491.6	190.3	685.4	1,444.1	416.0
1998/99	520.3	2.8	1,481.8	198.7	685.1	1,448.9	448.9
1999/00	506.2	2.9	1,465.4	214.0	690.1	1,469.8	444.0
2000/01	509.4	2.8	1,447.4	204.9	700.4	1,472.6	418.7
2001/02	511.9	2.9	1,481.2	208.3	713.6	1,496.5	403.3
2002/03	502.6	2.9	1,444.6	209.2	711.5	1,506.3	341.6
2003/04	510.8	2.9	1,472.4	205.8	717.6	1,535.4	278.7
2004/05	514.1	3.2	1,642.8	214.4	755.9	1,585.9	335.7
2005/06	516.4	3.1	1,599.9	222.5	757.3	1,617.1	318.4
2006/07	517.6	3.1	1,585.1	229.8	748.5	1,629.9	273.6
2007/08	533.8	3.2	1,692.7	244.7	762.1	1,674.4	291.9
2008/09	538.9	3.3	1,792.2	253.6	773.6	1,722.6	361.5
2009/10	533.1	3.4	1,804.4	254.1	779.9	1,766.6	399.2
2010/11	522.8	3.3	1,749.1	250.1	772.4	1,783.6	364.7
2011/12	538.2	3.4	1,852.0	287.1	805.2	1,852.5	364.3
2012/13	532.3	3.4	1,795.7	279.4	807.1	1,814.8	345.1
2013/14	542.5	3.7	1,996.3	327.0	863.3	1,936.9	404.5
2014/15	545.9	3.7	2,019.7	327.9	894.9	1,982.3	441.9
2015/16	548.1	3.7	2,003.3	325.2	906.9	1,996.3	448.9

Notes: Wheat and coarse grains trade data are on July/June years through 1975/76. From 1976/77 to the present, coarse grains data are on an Oct/Sept trade year.

World Wheat and Coarse Grains: Supply and Demand

Millions of Metric Tons/Hectares

	Area Harvested	Yield	Production	TY Exports	Feed Dom.	Domestic Consumption	Ending Stocks
Wheat							
1993/94	221.1	2.5	558.6	101.7	110.9	552.6	183.1
1994/95	213.4	2.5	523.1	101.5	102.8	541.7	164.5
1995/96	216.7	2.5	537.6	99.2	96.7	545.8	156.3
1996/97	227.1	2.6	581.4	104.0	101.1	572.7	165.0
1997/98	226.4	2.7	610.2	104.5	105.9	576.4	198.8
1998/99	219.2	2.7	590.5	102.0	109.2	578.9	210.4
1999/00	212.6	2.8	587.0	111.9	104.5	587.1	210.3
2000/01	215.6	2.7	583.3	102.1	111.1	587.0	206.6
2001/02	214.5	2.7	583.9	107.9	112.0	586.8	203.7
2002/03	213.4	2.7	569.7	106.5	116.1	604.1	169.3
2003/04	207.6	2.7	555.3	103.5	101.5	588.9	135.7
2004/05	215.8	2.9	626.8	113.2	110.4	606.1	156.4
2005/06	217.6	2.8	618.8	114.1	117.4	621.8	153.4
2006/07	212.3	2.8	596.7	115.3	112.8	616.5	133.6
2007/08	217.1	2.8	612.7	116.0	104.6	617.5	128.8
2008/09	224.2	3.0	683.6	143.2	124.3	643.3	169.1
2009/10	225.6	3.0	687.0	135.3	122.1	652.9	203.2
2010/11	216.8	3.0	649.9	134.1	116.7	654.0	199.1
2011/12	220.8	3.2	696.1	153.8	148.3	697.5	197.7
2012/13	215.8	3.1	658.7	147.2	138.3	679.3	177.0
2013/14	219.9	3.3	715.1	162.4	126.7	698.8	193.3
2014/15	223.3	3.2	725.3	161.2	134.5	708.9	209.7
2015/16	225.4	3.2	726.5	156.8	136.1	714.7	221.5
Coarse Grains							
1993/94	315.0	2.5	798.0	86.5	546.1	836.6	182.7
1994/95	320.8	2.7	869.7	98.6	567.6	853.9	198.5
1995/96	310.5	2.6	801.2	88.3	544.9	836.0	163.7
1996/97	318.9	2.9	909.0	94.3	573.3	869.3	203.4
1997/98	308.9	2.9	881.4	85.8	579.5	867.7	217.1
1998/99	301.1	3.0	891.3	96.7	575.9	870.0	238.5
1999/00	293.7	3.0	878.5	102.1	585.5	882.8	233.6
2000/01	293.8	2.9	864.1	102.8	589.3	885.6	212.2
2001/02	297.4	3.0	897.3	100.4	601.6	909.8	199.6
2002/03	289.2	3.0	874.9	102.7	595.5	902.2	172.3
2003/04	303.1	3.0	917.1	102.3	616.1	946.4	143.0
2004/05	298.3	3.4	1,016.1	101.2	645.5	979.8	179.3
2005/06	298.7	3.3	981.0	108.4	639.8	995.3	165.0
2006/07	305.4	3.2	988.4	114.5	635.7	1,013.5	140.0
2007/08	316.7	3.4	1,080.0	128.7	657.5	1,056.9	163.1
2008/09	314.7	3.5	1,108.5	110.4	649.3	1,079.3	192.3
2009/10	307.5	3.6	1,117.4	118.8	657.8	1,113.7	196.0
2010/11	306.0	3.6	1,099.2	116.0	655.6	1,129.6	165.6
2011/12	317.4	3.6	1,155.9	133.4	657.0	1,154.9	166.6
2012/13	316.5	3.6	1,137.0	132.2	668.8	1,135.5	168.1
2013/14	322.7	4.0	1,281.2	164.6	736.6	1,238.1	211.2
2014/15	322.5	4.0	1,294.5	166.7	760.4	1,273.4	232.3
2015/16	322.6	4.0	1,276.7	168.4	770.8	1,281.6	227.4

Notes: Wheat and coarse grains trade data are on July/June years through 1975/76. From 1976/77 to the present, coarse grains data are on an Oct/Sept trade year.

World Corn and Barley: Supply and Demand

Millions of Metric Tons/Hectares

	Area Harvested	Yield	Production	TY Exports	Feed Dom.	Domestic Consumpti	Ending Stocks
Corn							
1993/94	130.8	3.6	476.0	57.4	342.0	509.3	129.4
1994/95	135.2	4.1	559.4	71.9	371.6	535.5	153.3
1995/96	135.0	3.8	516.5	64.8	365.3	536.6	133.3
1996/97	141.5	4.2	592.8	66.6	387.9	559.8	166.3
1997/98	136.2	4.2	574.4	63.1	400.6	573.5	167.2
1998/99	138.9	4.4	605.7	68.7	404.3	581.5	191.4
1999/00	138.9	4.4	608.4	72.0	422.5	605.3	194.4
2000/01	137.1	4.3	591.8	75.9	427.4	610.9	175.3
2001/02	137.3	4.4	601.8	72.7	436.4	625.6	151.5
2002/03	137.5	4.4	603.9	76.8	433.4	628.6	126.8
2003/04	141.7	4.4	627.5	79.0	445.8	649.7	104.6
2004/05	145.4	4.9	716.9	76.0	475.9	690.4	131.1
2005/06	145.4	4.8	700.7	82.5	478.9	708.3	123.5
2006/07	150.4	4.8	716.7	91.3	479.5	730.8	109.4
2007/08	160.4	5.0	795.6	98.2	499.2	775.1	129.9
2008/09	158.7	5.0	799.8	83.6	481.4	784.3	145.4
2009/10	158.4	5.2	824.8	92.7	490.6	826.1	144.1
2010/11	164.6	5.1	835.5	91.7	502.2	852.0	127.7
2011/12	172.0	5.2	888.2	103.7	506.5	883.5	132.4
2012/13	177.4	4.9	869.3	100.5	518.2	864.5	137.2
2013/14	181.5	5.5	990.8	130.2	573.7	953.0	175.0
2014/15	178.6	5.6	1,006.2	125.1	596.9	983.8	197.4
2015/16	177.8	5.5	985.6	126.8	605.5	987.9	195.1
Barley							
1993/94	73.2	2.3	169.0	18.8	123.8	169.1	34.9
1994/95	72.2	2.2	160.7	15.3	120.9	165.6	30.0
1995/96	66.4	2.1	141.2	13.4	107.8	150.7	20.5
1996/97	64.3	2.4	153.2	17.9	106.3	149.5	24.1
1997/98	63.8	2.4	153.9	12.8	104.1	145.8	32.2
1998/99	56.6	2.4	136.0	17.8	99.5	139.3	29.0
1999/00	52.1	2.4	127.4	17.8	94.0	132.5	23.9
2000/01	52.9	2.5	133.0	16.3	94.6	134.3	22.6
2001/02	55.7	2.6	143.4	17.2	95.5	136.8	29.2
2002/03	54.8	2.4	134.2	16.3	94.7	135.8	27.5
2003/04	58.4	2.4	142.7	14.8	103.1	146.8	23.5
2004/05	57.5	2.6	152.1	17.0	100.0	142.5	33.1
2005/06	55.3	2.5	136.1	17.4	97.3	140.9	28.3
2006/07	56.4	2.4	136.9	14.6	98.4	143.7	21.5
2007/08	55.9	2.4	133.0	18.5	91.1	134.0	20.6
2008/09	55.2	2.8	155.1	18.2	100.4	144.0	31.6
2009/10	54.4	2.8	151.1	17.3	101.4	145.3	37.4
2010/11	47.2	2.6	123.2	15.2	91.3	136.3	24.3
2011/12	49.4	2.7	133.6	21.4	91.7	135.2	22.7
2012/13	50.1	2.6	129.2	22.1	88.7	131.4	20.5
2013/14	50.7	2.9	144.6	23.9	97.1	141.1	24.0
2014/15	49.8	2.8	140.8	27.4	94.4	140.8	24.0
2015/16	49.8	2.8	139.4	25.0	93.7	142.0	21.4

Notes: Coarse grains trade data are on July/June years through 1975/76. From 1976/77 to the present, coarse grains data are on an Oct/Sept trade year.

World Rice: Supply and Demand

Millions of Metric Tons/Hectares

	Area Harvested	Yield	Rough Production	Production	TY Exports	Domestic Consumption	Ending Stocks
Rice, Milled							
1986/87	144.8	3.2	464.6	316.1	12.9	310.4	103.3
1987/88	141.4	3.3	464.8	315.1	11.4	313.1	105.3
1988/89	146.6	3.3	490.8	332.1	14.0	325.7	111.7
1989/90	147.8	3.5	510.3	345.2	11.7	336.3	120.6
1990/91	147.0	3.5	519.4	351.4	12.3	345.3	126.7
1991/92	147.5	3.5	522.8	353.2	14.4	353.2	126.7
1992/93	146.5	3.6	524.2	354.0	14.9	357.5	123.2
1993/94	145.3	3.6	526.1	354.7	16.6	358.9	119.0
1994/95	147.3	3.7	540.0	364.1	20.8	365.5	117.6
1995/96	148.4	3.7	547.3	368.8	19.7	368.3	118.1
1996/97	150.1	3.8	565.3	381.4	18.9	379.2	120.3
1997/98	151.7	3.8	575.2	387.4	27.6	380.0	127.7
1998/99	153.1	3.8	587.0	394.9	24.8	388.7	134.0
1999/00	155.9	3.9	608.8	409.3	22.8	400.3	143.1
2000/01	152.4	3.9	594.1	399.3	24.3	395.6	146.7
2001/02	151.3	3.9	594.3	399.5	27.9	413.3	132.9
2002/03	146.9	3.8	563.1	378.2	27.6	408.1	103.0
2003/04	149.3	3.9	585.4	392.5	27.3	413.8	81.7
2004/05	151.8	3.9	596.4	400.8	28.9	408.5	74.0
2005/06	153.9	4.0	622.2	417.8	29.0	415.4	76.5
2006/07	154.5	4.0	625.0	420.1	31.8	421.2	75.4
2007/08	154.9	4.2	643.7	433.7	29.5	428.1	81.0
2008/09	158.1	4.2	668.6	449.3	29.4	437.7	92.6
2009/10	155.6	4.2	656.1	440.6	31.8	438.4	94.9
2010/11	158.4	4.2	672.4	450.6	36.5	445.3	100.1
2011/12	160.5	4.3	697.3	467.7	39.9	461.0	106.9
2012/13	158.6	4.4	704.8	472.7	39.5	468.9	110.7
2013/14	161.5	4.4	713.1	478.2	43.4	481.5	107.4
2014/15	160.2	4.4	710.0	476.2	42.5	483.6	100.0
2015/16	161.0	4.4	713.8	478.7	42.3	487.8	90.8

Notes: Stocks, exports and consumption are expressed on a milled basis in marketing years.

ENDNOTES TO GRAIN: WORLD MARKETS AND TRADE

REGIONAL TABLES

North America: Canada, Mexico, the United States.

Central America: Belize, Costa Rica, El Salvador, Guatemala, Honduras, Nicaragua, Panama.

Caribbean: Anguilla, Antigua and Barbuda, Aruba, Bahamas, Barbados, Bermuda, British Virgin Islands, Cayman Islands, Cuba, Dominica, Dominican Republic, French West Indies, Grenada, Guadeloupe, Haiti, Jamaica and Dep, Leeward-Windward Islands, Martinique, Montserrat, Netherlands Antilles, Puerto Rico, Kitts and Nevis, St. Lucia, St. Vincent and the Grenadines, Trinidad and Tobago, Turks and Caicos Islands, Virgin Islands of the U.S.

South America: Argentina, Bolivia, Brazil, Chile, Colombia, Ecuador, Falkland Islands (Islas Malvinas), French Guiana, Guyana, Paraguay, Peru, Suriname, Uruguay, Venezuela.

EU: Austria, Belgium/Luxembourg, Bulgaria, Croatia, Cyprus, Czech Republic, Denmark, Estonia, Finland, France, Germany, Greece, Hungary, Ireland, Italy, Latvia, Lithuania, Malta, Netherlands, Poland, Portugal, Romania, Slovakia, Slovenia, Spain, Sweden, United Kingdom.

Other Europe: Albania, Azores, Bosnia and Herzegovina, Former Yugoslavia, Gibraltar, Iceland, Macedonia, Montenegro, Norway, Serbia, Switzerland.

Former Soviet Union: Armenia, Azerbaijan, Belarus, Georgia, Kazakhstan, Kyrgyzstan, Moldova, Russia, Tajikistan, Turkmenistan, Ukraine, Uzbekistan.

Middle East: Bahrain, Iran, Iraq, Israel, Jordan, Kuwait, Lebanon, Oman, Qatar, Saudi Arabia, Syria, Turkey, United Arab Emirates, Yemen.

North Africa: Algeria, Egypt, Libya, Morocco, Tunisia.

Sub-Saharan Africa: all African countries except North Africa.

East Asia: China, Hong Kong, Japan, South Korea, North Korea, Macau, Mongolia, Taiwan.

South Asia: Afghanistan, Bangladesh, Bhutan, India, Nepal, Pakistan, Sri Lanka, Maldives.

Southeast Asia: Brunei, Burma, Cambodia, Indonesia, Laos, Malaysia, Philippines, Singapore, Thailand, Vietnam.

Oceania: Australia, Fiji, New Zealand, Papua New Guinea.

OTHER NOTES

Local Marketing Years (LMY): LMY refers to the 12-month period at the onset of the main harvest, when the crop is marketed (i.e., consumed, traded, or stored). The year first listed begins a country's LMY for that commodity (2015/16 starts in 2015); except for summer grains in certain Southern Hemisphere countries and for rice in selected countries, where the second year begins the LMY (2015/16 starts in 2016). Key exporter LMY's are:

Wheat	Corn	Barley	Sorghum
Argentina (Dec/Nov)	Argentina (Mar/Feb)	Australia (Nov/Oct)	Argentina (Mar/Feb)
Australia (Oct/Sep)	Brazil (Mar/Feb)	Canada (Aug/Jul)	Australia (Mar/Feb)
Canada (Aug/Jul)	China (Oct/Sep)	European Union (Jul/Jun)	United States (Sep/Aug)
China (Jul/Jun)	South Africa (May/Apr)	Russia (Jul/Jun)	
European Union (Jul/Jun)	United States (Sep/Aug)	Ukraine (Jul/Jun)	
India (Apr/Mar)		United States (Jun/May)	
Kazakhstan (Jul/Jun)			
Russia (Jul/Jun)			
Turkey (Jun/May)			
Ukraine (Jul/Jun)			
United States (Jun/May)			

For a complete list of local marketing years, please see the FAS website (<http://www.fas.usda.gov/psdonline/psdAvailability.aspx>).

Stocks: Unless otherwise stated, stock data are based on an aggregate of differing local marketing years and should not be construed as representing world stock levels at a fixed point in time.

Consumption: World totals for consumption reflect total utilization, including food, seed, industrial, feed, and waste; as well as differences in local marketing year imports and local marketing year exports. Consumption statistics for regions and individual countries, however, reflect food, seed, industrial, feed, and waste only.

Trade: All PSD tables are balanced on the different local marketing years. All trade tables contain Trade Year (TY) data which puts all countries on a uniform, 12-month period for analytical comparisons: wheat is July/June; coarse grains, corn, barley, sorghum, oats, and rye are Oct/Sept; and rice is calendar year.

EU Consolidation: The trade figures starting from 1999/00 represent the European Union (Croatia plus the former EU-27) and exclude all intra-trade. For the years 1960/61 through 1998/99, figures are the EU-15 and also exclude all intra-trade. EU-15 member states' data for grains are no longer maintained in the official USDA database. Data for the individual NMS-10, plus Bulgaria, Romania, and Croatia, exists only prior to 1999/00.

Statistics: (1) Wheat trade statistics include wheat, flour, and selected pasta products on a grain equivalent basis. (2) Rice trade statistics include rough, brown, milled, and broken on a milled equivalent basis. (3) Coarse grains statistics include corn, barley, sorghum, oats, rye, millet, and mixed grains but exclude trade in barley malt, millet, and mixed grains.

Unaccounted: This term includes grain in transit, reporting discrepancies in some countries, and trade to countries outside the USDA database.

The Global Commodity Analysis Division, Office of Global Analysis, Foreign Agricultural Service, USDA, Washington, DC 20250, prepared this circular. Information is gathered from official statistics of foreign governments and other foreign source materials, reports of U.S. agricultural attachés and Foreign Service officers, office research, and related information. Further information may be obtained by writing the Division or telephoning (202) 720-3448.

Note: The previous report in this series was Grain: World Markets and Trade July 2015. For further details on world grain production, please see World Agricultural Production August 2015.

This circular is available in its entirety on the Internet via the Foreign Agricultural Service Home Page. The address is: <http://www.fas.usda.gov>

Questions may be directed to the following staff:

Teresa McKeivier	(202) 690-1151	Teresa.McKeivier@fas.usda.gov	Wheat
Andrew Sowell	(202) 720-0262	Andrew.Sowell@fas.usda.gov	Wheat
Yoonhee Macke	(202) 690-4199	Yoonhee.Macke@fas.usda.gov	Rice
Kyle Bonsu	(202) 260-8370	Kyle.Bonsu@fas.usda.gov	Rice
Rick O'Meara	(202) 720-4933	Richard.Omeara@fas.usda.gov	Coarse Grains
Lisa Bennett	(202) 720-0929	Lisa.Bennett@fas.usda.gov	Coarse Grains