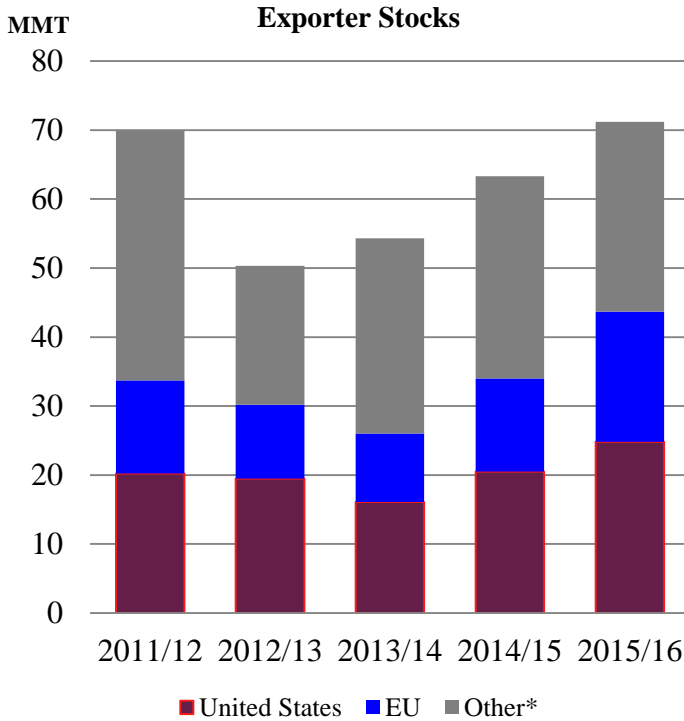




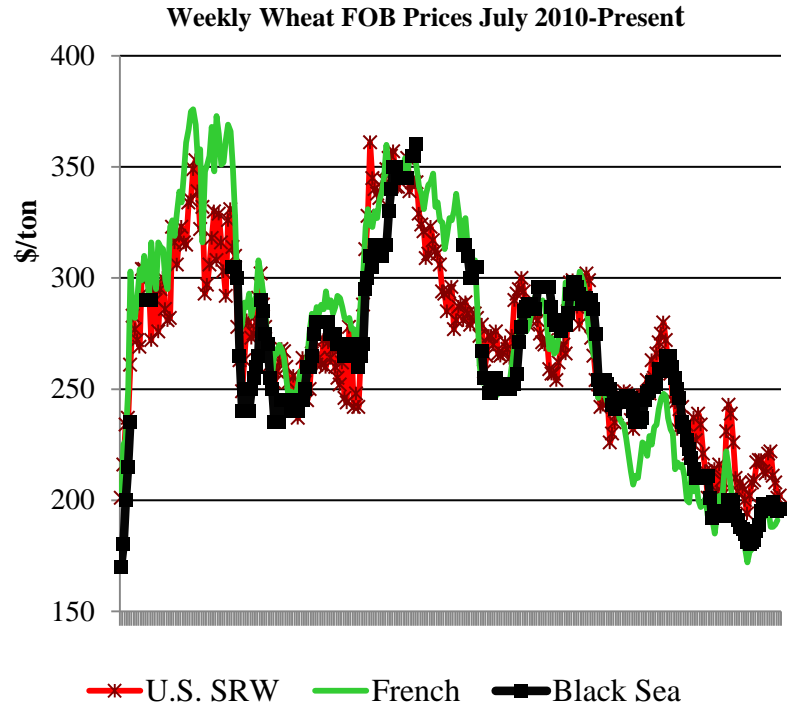
Grain: World Markets and Trade

December 2015

Wheat Exporter Stocks Projected at 5-Year High: Export Prices Drop to 5-Year Lows



*Argentina, Australia, Canada, Kazakhstan, Russia, Ukraine



The projected glut in 2015/16 global wheat supplies is pressuring export prices to the lowest level since July 2010. While world production and consumption are forecast at a record and global trade at a near-record, stocks continue to build. Although lower prices are stimulating additional demand, it is not enough to offset burdensome supplies. Exporter stocks are generally available to the world, and are therefore inversely related to global prices.

The United States and the European Union (Western Europe, in particular) have ample storage facilities and, combined, are expected to carry over 60 percent of 2015/16 exporter ending stocks. Although U.S. export prices are at a 5-year low, they remain mostly uncompetitive beyond traditional markets, resulting in stocks projected at a 6-year high. Production in the EU is projected at a record and stocks are at an 8-year high. While EU exports are the second highest ever, intensified competition with Russia and Ukraine is constraining exports. It is likely that exporter prices will remain under downward pressure, but much depends upon the development of the 2016/17 Northern Hemisphere wheat crop.

For email subscription, click here to register: <https://public.govdelivery.com/accounts/USDAFAS/subscriber/new>

TABLE OF CONTENTS

World Markets and Trade: Commentary and Current Data	
Wheat	4
Rice	9
Coarse Grains.....	15
Historical Data Series for Selected Regions and Countries	35
Endnotes to Grain: World Markets and Trade	54

The Foreign Agricultural Service (FAS) updates its production, supply and distribution (PSD) database for cotton, oilseeds, and grains at 12:00 p.m. on the day the *World Agricultural Supply and Demand Estimates* (WASDE) report is released. This circular is released by 12:15 p.m.

To download the tables in the publication, go to Production, Supply and Distribution Database (PSD Online): (<http://apps.fas.usda.gov/psdonline/psdHome.aspx>), scroll down to Reports, and Click the plus sign [+] next to Grains.

FAS Reports and Databases:

Current *World Markets and Trade* and *World Agricultural Production* Reports:

<http://apps.fas.usda.gov/psdonline/psdDataPublications.aspx>

Archives *World Markets and Trade* and *World Agricultural Production* Reports:

<http://usda.mannlib.cornell.edu/MannUsda/viewTaxonomy.do?taxonomyID=7>

Production, Supply and Distribution Database (PSD Online):

<http://apps.fas.usda.gov/psdonline/psdHome.aspx>

Global Agricultural Trade System (U.S. Exports and Imports):

<http://apps.fas.usda.gov/gats/default.aspx>

Export Sales Report:

<http://apps.fas.usda.gov/esrquery/>

Global Agricultural Information Network (Agricultural Attaché Reports):

<http://gain.fas.usda.gov/Pages/Default.aspx>

Other USDA Reports:

World Agricultural Supply and Demand Estimates (WASDE):

<http://www.usda.gov/oce/commodity/wasde/>

Economic Research Service:

<http://www.ers.usda.gov/topics/crops>

National Agricultural Statistics Service:

<http://www.nass.usda.gov/Publications/>

All Grain Summary Comparison
Million Metric Tons

Marketing Year	Wheat			Rice, Milled			Corn			
	2013/14	2014/15	2015/16	2013/14	2014/15	2015/16	2013/14	2014/15	2015/16	
Production										
United States	(Jun-May)	58.1	55.1	55.8	6.1	7.1	6.1	351.3	361.1	346.8
Other		657.2	670.2	679.1	472.3	471.1	463.2	640.1	647.7	627.1
World Total		715.3	725.3	734.9	478.4	478.2	469.3	991.4	1,008.8	973.9
Domestic Consumption										
United States	(Jun-May)	34.3	31.5	33.2	4.0	4.1	4.0	293.0	301.9	301.8
Other		656.7	669.9	681.5	474.2	475.6	478.6	649.3	659.4	674.1
World Total		691.0	701.4	714.7	478.2	479.7	482.6	942.3	961.3	975.9
Ending Stocks										
United States	(Jun-May)	16.1	20.5	24.8	1.0	1.6	1.2	31.3	44.0	45.3
Other		177.7	191.6	205.1	106.6	102.1	87.2	143.6	164.2	166.6
World Total		193.8	212.1	229.9	107.6	103.7	88.4	174.9	208.2	211.9
TY Imports										
United States	(Jun-May)	4.8	4.0	3.4	0.8	0.8	0.8	0.7	0.8	0.8
Other		155.4	154.3	156.0	40.2	38.7	38.5	124.4	121.2	122.8
World Total		160.2	158.3	159.4	41.0	39.5	39.3	125.1	122.0	123.6
TY Exports										
United States	(Jun-May)	31.5	22.8	22.0	3.0	3.5	3.3	50.7	46.8	44.5
Other		130.9	138.5	140.3	40.4	38.9	38.0	79.5	81.0	83.2
World Total		162.4	161.3	162.3	43.4	42.4	41.3	130.2	127.8	127.7

Note: Consumption in this table has not been adjusted for differences in marketing year imports and exports and therefore differs from global totals shown elsewhere. Marketing years for U.S. grains are: Wheat (Jun-May), Rice (Aug-Jul), Corn (Sep-Aug). 'Marketing Year' column is germane for U.S. wheat only.

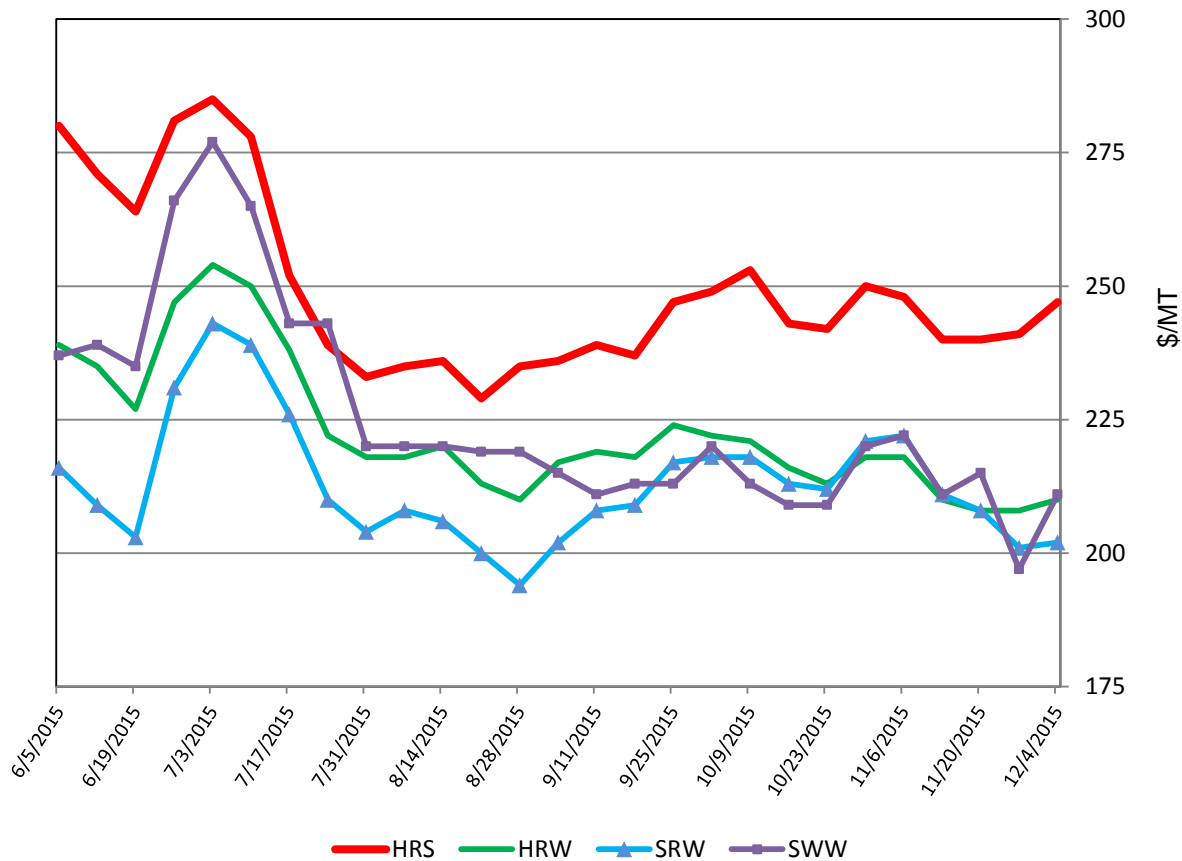
WHEAT: WORLD MARKETS AND TRADE

OVERVIEW

Global production in 2015/16 is raised to a new record level based upon larger-than-anticipated crops in Canada and the EU. Elevated global trade results in higher exports in Argentina, Canada, and Ukraine, more than offsetting a cut in the EU. U.S. exports and the season-average farm price are both unchanged this month.

U.S. PRICES:

U.S. Weekly FOB Export Bids



Domestic: Prices for all U.S. wheat classes fell to some degree in the last month. Although Hard Red Spring (HRS) rebounded slightly, overall HRS was down \$1 to \$247/ton. Hard Red Winter (HRW) dropped \$8 to \$210/ton. Soft White Wheat (SWW) fell \$11 but remains just above HRW at \$211/ton. Soft Red Winter (SRW) prices experienced the sharpest decline, dropping \$20 to \$202/ton.

TRADE CHANGES IN 2015/16

Selected Exporters

- **Argentina** is raised 1.0 million tons to 6.5 million on the announced elimination of export taxes and quotas by the incoming government.
- **Canada** is up 500,000 tons to 21.0 million on the continued strong pace of trade to date and a larger than anticipated crop.
- **European Union** is down 1.0 million tons to 32.5 million on a slower than expected pace and sluggish export licenses.
- **Ukraine** is boosted 500,000 tons to 15.5 million based upon a significantly faster pace of feed-quality wheat shipments, particularly to Southeast Asia.

Selected Importers

- **Ethiopia** is raised 300,000 tons to a record 1.9 million as the government is expected to announce additional tenders in response to severe emergency food needs in drought-stricken areas and to replenish diminishing stocks.
- **Indonesia** is up 300,000 tons to 8.1 million due to recent purchases of feed-quality wheat, particularly from Ukraine.
- **Thailand** is lifted 300,000 tons to 3.5 million on the fast pace of trade to-date, particularly feed-quality wheat. Domestically, reports of rotten rice largely unsuitable for use in animal feed rations further enhances the likelihood of continued feed-quality wheat purchases.

World Wheat, Flour, and Products Trade
July/June Year, Thousand Metric Tons

	2011/12	2012/13	2013/14	2014/15	2015/16 Nov	2015/16 Dec
TY Exports						
Argentina	11,951	7,450	1,675	4,200	5,500	6,500
Australia	23,031	21,269	18,339	16,575	17,500	17,500
Brazil	1,860	1,753	81	1,688	1,500	1,500
Canada	17,603	18,584	22,157	24,832	20,500	21,000
European Union	16,728	22,786	32,033	35,401	33,500	32,500
Kazakhstan	11,069	6,801	8,000	5,507	6,500	6,500
Mexico	790	729	1,322	1,104	1,100	1,100
Russia	21,627	11,289	18,568	22,800	23,500	23,500
Turkey	3,678	3,583	4,293	4,136	4,000	4,000
Ukraine	5,436	7,190	9,755	11,269	15,000	15,500
Others	11,850	18,040	14,642	11,081	10,292	10,692
Subtotal	125,623	119,474	130,865	138,593	138,892	140,292
United States	28,142	27,734	31,518	22,752	22,000	22,000
World Total	153,765	147,208	162,383	161,345	160,892	162,292
TY Imports						
Afghanistan	2,200	1,600	2,050	2,000	2,000	2,000
Algeria	6,500	6,484	7,484	7,257	7,700	7,700
Bangladesh	2,039	2,725	3,354	3,804	3,600	3,600
Brazil	7,053	7,547	7,061	5,869	6,300	6,300
China	2,933	2,960	6,773	1,926	2,000	2,000
Egypt	11,650	8,300	10,170	11,063	11,500	11,500
Ethiopia	1,550	1,344	670	1,100	1,600	1,900
European Union	7,362	5,276	3,974	5,973	6,000	6,000
Indonesia	6,457	7,146	7,392	7,478	7,800	8,100
Iran	2,400	5,600	6,600	5,006	4,500	4,500
Iraq	3,784	3,948	3,246	2,253	3,200	3,200
Japan	6,354	6,598	6,123	5,878	5,800	5,800
Korea, South	5,188	5,439	4,288	3,942	4,200	4,200
Mexico	5,020	3,823	4,636	4,446	4,400	4,400
Morocco	3,671	3,825	3,892	4,073	2,800	2,800
Nigeria	3,903	4,138	4,580	4,244	4,400	4,400
Philippines	4,075	3,645	3,482	5,099	4,800	4,800
Saudi Arabia	2,904	1,921	3,429	3,487	3,800	3,800
Sudan	2,360	1,793	2,664	2,632	2,800	2,800
Thailand	2,646	1,845	1,693	3,489	3,200	3,500
Tunisia	1,473	1,523	1,634	1,461	2,000	2,000
Turkey	4,413	3,312	4,154	5,960	3,800	3,800
Uzbekistan	2,698	1,863	2,224	2,230	2,200	2,400
Vietnam	2,711	1,671	2,158	2,296	2,600	2,600
Yemen	2,685	3,149	3,425	3,245	3,300	3,300
Others	44,842	43,808	48,269	48,133	48,461	48,661
Subtotal	148,871	141,283	155,425	154,344	154,761	156,061
Unaccounted	1,857	2,449	2,173	3,014	2,781	2,881
United States	3,037	3,476	4,785	3,987	3,350	3,350
World Total	153,765	147,208	162,383	161,345	160,892	162,292

TY=Trade Year, see Endnotes.

World Wheat Production, Consumption, and Stocks
Local Marketing Years, Thousand Metric Tons

	2011/12	2012/13	2013/14	2014/15	2015/16 Nov	2015/16 Dec
Production						
Argentina	15,500	9,300	10,500	12,500	10,500	10,500
Australia	29,905	22,856	25,303	23,666	26,000	26,000
Canada	25,288	27,205	37,530	29,420	26,000	27,600
China	117,400	121,023	121,930	126,208	130,000	130,000
Egypt	8,400	8,500	8,250	8,300	8,100	8,100
European Union	138,182	133,949	144,583	156,525	157,274	157,663
India	86,874	94,882	93,506	95,850	88,940	88,940
Iran	12,400	13,800	14,500	13,000	14,000	14,000
Kazakhstan	22,732	9,841	13,941	12,996	14,000	14,000
Morocco	5,800	3,870	7,000	5,100	8,000	8,000
Pakistan	25,000	23,300	24,000	25,500	25,000	25,000
Russia	56,240	37,720	52,091	59,080	60,500	60,500
Turkey	18,800	16,000	18,750	15,250	19,500	19,500
Ukraine	22,324	15,761	22,278	24,750	27,000	27,000
Uzbekistan	6,300	6,700	6,800	7,150	7,200	7,200
Others	50,767	52,697	56,193	54,901	55,130	55,090
Subtotal	641,912	597,404	657,155	670,196	677,144	679,093
United States	54,244	61,298	58,105	55,147	55,840	55,840
World Total	696,156	658,702	715,260	725,343	732,984	734,933
Total Consumption						
Algeria	8,950	9,450	9,850	10,050	10,250	10,250
Brazil	11,200	10,900	11,400	10,700	10,600	10,600
Canada	9,852	9,530	9,407	9,115	9,000	9,000
China	122,500	125,000	116,500	118,500	118,000	118,000
Egypt	18,600	18,700	18,500	19,100	19,600	19,600
European Union	127,234	119,250	117,300	123,500	126,750	125,750
India	81,408	83,824	93,848	93,130	93,940	93,940
Indonesia	6,250	6,950	7,165	7,365	7,650	7,950
Iran	15,200	16,000	17,000	17,500	18,000	18,000
Morocco	8,800	8,300	9,000	9,000	9,800	9,800
Pakistan	23,100	23,900	24,100	24,500	24,600	24,600
Russia	38,000	33,550	34,100	35,500	36,500	36,500
Turkey	18,100	17,650	17,750	17,500	18,000	18,000
Ukraine	14,950	11,400	11,500	12,000	12,500	12,500
Uzbekistan	7,800	8,000	8,400	8,900	9,100	9,300
Others	145,443	147,006	150,905	153,465	157,345	157,715
Subtotal	665,560	641,467	664,274	675,505	684,196	683,966
United States	31,962	37,768	34,287	31,530	33,177	33,177
World Total	697,522	679,235	698,561	707,035	717,373	717,143
Ending Stocks						
Australia	7,051	4,663	4,557	4,273	4,998	4,998
Canada	5,932	5,137	10,436	7,108	4,593	5,693
China	55,946	53,960	65,274	74,105	87,067	87,105
European Union	13,522	10,711	9,935	13,532	16,342	18,945
India	19,950	24,200	17,830	17,200	11,900	11,900
Iran	825	5,086	7,221	7,821	7,321	7,321
Russia	10,899	4,952	5,175	6,282	7,132	7,132
Others	63,264	48,820	57,273	61,252	63,156	61,976
Subtotal	177,389	157,529	177,701	191,573	202,509	205,070
United States	20,211	19,538	16,065	20,501	24,794	24,794
World Total	197,600	177,067	193,766	212,074	227,303	229,864

Regional Wheat Imports, Production, Consumption, and Stocks

Thousand Metric Tons

	2011/12	2012/13	2013/14	2014/15	Nov 2015/16	Dec 2015/16
TY Imports						
North America	8,554	7,784	9,862	8,923	8,235	8,235
Central America	1,666	1,654	1,833	1,834	1,795	1,795
South America	13,779	14,422	14,831	13,181	13,565	13,715
European Union - 28	7,362	5,276	3,974	5,973	6,000	6,000
Other Europe	1,930	1,703	1,921	1,748	1,895	1,895
Former Soviet Union - 12	8,022	7,228	7,411	7,667	7,140	7,340
Middle East	23,066	24,163	28,342	26,928	26,000	26,050
North Africa	24,855	22,078	25,229	25,180	25,600	25,600
Sub-Saharan Africa	19,176	18,501	20,443	20,945	22,230	22,530
East Asia	16,865	17,352	19,463	14,120	14,410	14,410
South Asia	5,487	5,308	6,733	8,036	7,251	7,251
Southeast Asia	18,019	16,325	17,119	20,595	20,775	21,375
Others	3,127	2,965	3,049	3,201	3,215	3,215
Total	151,908	144,759	160,210	158,331	158,111	159,411
Production						
North America	83,160	91,734	99,012	88,254	85,620	87,220
South America	25,865	18,604	19,879	22,731	21,181	21,141
European Union - 28	138,182	133,949	144,583	156,525	157,274	157,663
Other Europe	3,597	3,431	4,059	3,856	4,132	4,132
Former Soviet Union - 12	114,985	77,802	103,873	112,728	117,030	117,030
Middle East	39,285	36,884	41,708	35,117	40,855	40,855
North Africa	18,366	17,320	19,722	16,900	20,000	20,000
Sub-Saharan Africa	6,231	6,718	7,518	7,721	6,913	6,913
East Asia	118,775	122,490	123,248	127,648	131,298	131,298
South Asia	117,236	126,239	125,706	129,595	122,080	122,080
Oceania	30,288	23,345	25,751	24,067	26,400	26,400
Others	186	186	201	201	201	201
Total	696,156	658,702	715,260	725,343	732,984	734,933
Domestic Consumption						
North America	49,414	53,923	50,344	47,495	49,177	49,177
South America	26,085	26,432	27,261	26,932	26,789	26,924
European Union - 28	127,234	119,250	117,300	123,500	126,750	125,750
Other Europe	4,871	4,721	4,757	4,810	4,890	4,890
Former Soviet Union - 12	79,980	71,725	72,840	75,690	77,525	77,625
Middle East	56,723	56,636	58,717	58,112	60,060	60,095
North Africa	40,927	41,421	42,424	42,676	44,325	44,325
Sub-Saharan Africa	23,260	23,994	26,659	27,149	28,045	28,045
East Asia	137,057	140,072	130,321	131,287	130,851	130,851
South Asia	115,930	121,007	132,041	132,253	133,926	133,926
Southeast Asia	16,665	16,520	16,574	19,030	20,080	20,680
Oceania	7,824	8,111	8,280	8,869	8,800	8,800
Others	3,379	3,366	3,494	3,552	3,594	3,594
Total	689,349	687,178	691,012	701,355	714,812	714,682
Ending Stocks						
North America	26,718	24,950	26,817	28,104	29,962	31,062
South America	4,039	3,746	6,959	6,598	6,084	4,879
European Union - 28	13,522	10,711	9,935	13,532	16,342	18,945
Other Europe	1,458	1,149	1,103	1,242	1,304	1,304
Former Soviet Union - 12	26,006	13,920	15,217	19,708	20,648	20,298
Middle East	12,193	13,798	18,275	17,877	19,332	19,357
North Africa	14,094	11,487	13,550	12,347	12,972	12,972
Sub-Saharan Africa	2,401	2,486	2,957	3,195	3,348	3,698
East Asia	59,235	57,509	68,487	77,632	90,916	90,954
South Asia	25,448	28,173	21,642	22,575	16,625	16,625
Southeast Asia	4,678	3,814	3,582	4,295	4,140	4,140
Oceania	7,436	4,983	4,875	4,556	5,271	5,271
Others	372	341	367	413	359	359
Total	197,600	177,067	193,766	212,074	227,303	229,864

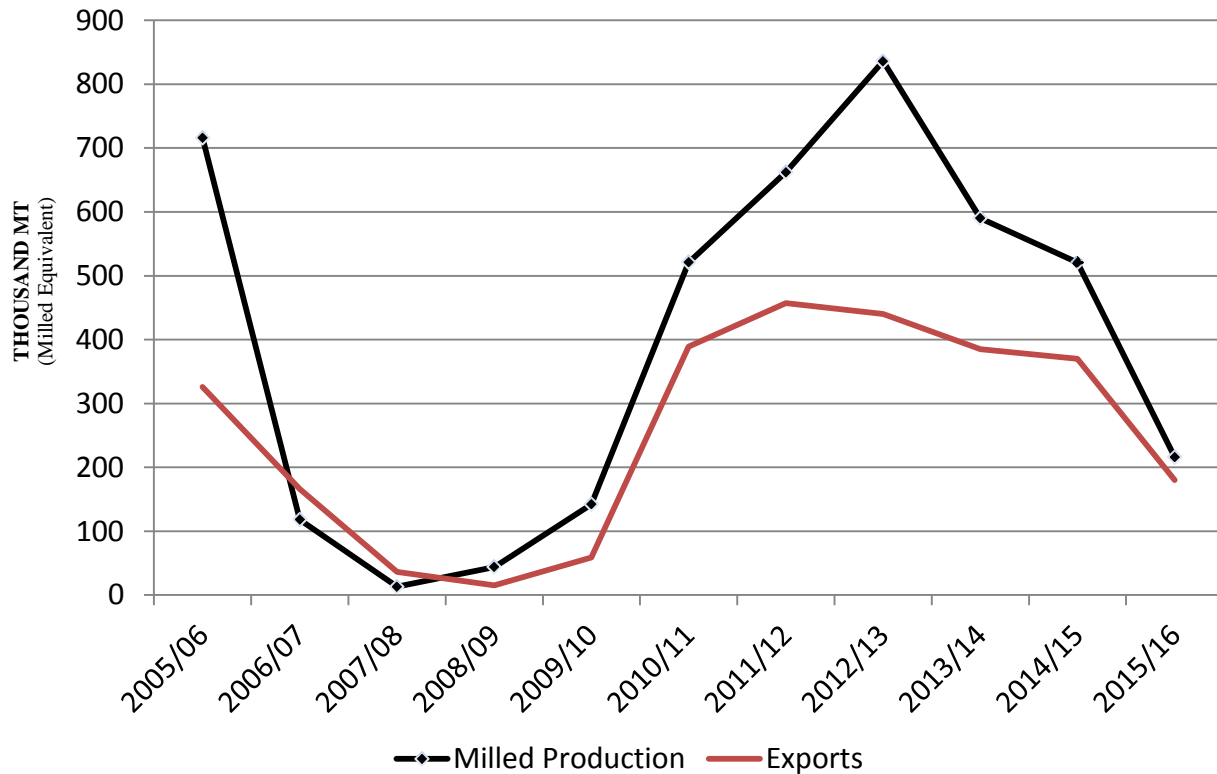
NOTES: Regional definitions appear on last page of this circular. Imports are reported on a trade year basis. All other data are reported using local marketing years.

RICE: WORLD MARKETS AND TRADE

OVERVIEW

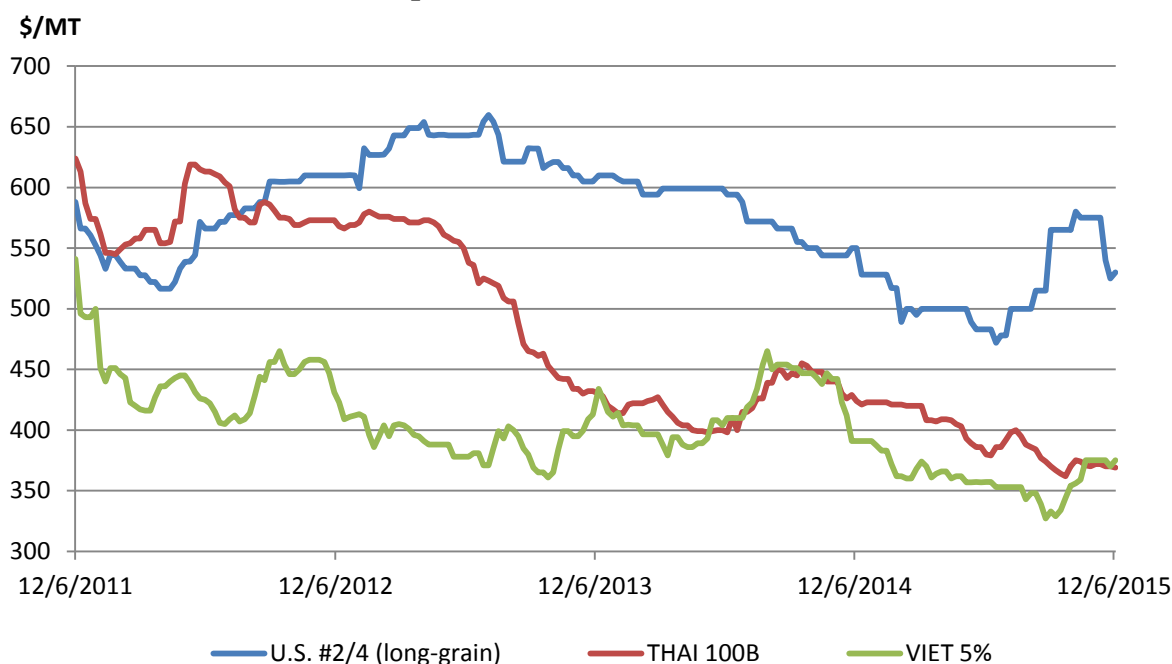
Global production for 2015/16 is down from last month with reductions primarily in India, Australia, Madagascar, and the Philippines. Consumption is revised lower but still exceeds production, drawing down stocks. Stocks are forecast at the lowest level in 8 years. Trade is down marginally with reduced exports for India and Australia. U.S. exports are unchanged.

Australia's Exports to Drop Again



Australia is a producer and important exporter of medium-grain rice. Current limited water availability has cut area to the lowest level since 2009/10, with production forecast at about one-third of the previous 5-year average. Similar to past drought years, the limited crop is expected to constrain exports, this time tumbling to 180,000 tons and well below the 400,000 tons shipped in recent years. Other medium-grain exporters, such as the United States, now have expanded opportunities to ship to Australia's traditional markets in Asia, Oceania, and the Middle East.

U.S. Quotes Dip, But Remain Well Above Asian Prices



Over the past month, Thai quotes were unchanged, while Viet quotes fell marginally due to slow global demand. For the first time in 3 months, U.S. quotes are down noticeably, falling 8 percent or \$45/ton to \$530/ton also due to slower export demand. U.S. quotes, however, maintain a significant premium of nearly \$150/ton over Southeast Asian origins.

Over the past calendar year, Thai dropped 13 percent from \$423/ton to \$369/ton. Viet quotes fell a marginal 2 percent from \$383/ton to \$375/ton. After beginning the year at close to \$530/ton, U.S. prices fluctuated within a \$100 range, but have settled back at \$530/ton.

SELECTED TRADE CHANGES for 2016

- **Australia's** exports are slashed 150,000 tons to 180,000 due to a significantly smaller crop.
- **Bangladesh's** imports are lowered 250,000 tons to 600,000, reflecting reduced exports by India, its major supplier.
- **India's** exports are cut 1.0 million tons to 8.5 million on the smallest crop in 5 years.
- **Madagascar's** imports are raised 100,000 tons to 350,000 on a smaller crop.
- **Nigeria's** imports are reduced 500,000 tons to 2.5 million as the government continues to limit imports.

-
- **Thailand's** exports are boosted 500,000 tons to 10.0 million based on improved competitiveness relative to India.
 - **Vietnam's** exports are raised 100,000 tons to 7.1 million, reflecting stronger demand in Southeast Asia.

World Rice Trade
January/December Year, Thousand Metric Tons

	2011/12	2012/13	2013/14	2014/15	2015/16 Nov	2015/16 Dec
TY Exports						
Argentina	608	526	494	325	480	480
Australia	449	460	404	350	330	180
Brazil	1,105	830	852	800	800	800
Burma	1,357	1,163	1,688	2,000	1,800	1,800
Cambodia	900	1,075	1,000	1,100	800	800
China	267	447	393	400	400	400
Egypt	600	700	600	250	400	400
European Union	194	203	284	260	260	260
Guyana	265	346	502	536	520	520
India	10,250	10,480	10,907	11,500	9,500	8,500
Pakistan	3,399	4,126	3,600	4,000	4,500	4,500
Paraguay	262	365	380	407	500	500
Thailand	6,945	6,722	10,969	9,000	9,500	10,000
Uruguay	1,056	939	957	750	950	950
Vietnam	7,717	6,700	6,325	6,300	7,000	7,100
Others	1,276	1,089	1,026	924	871	891
Subtotal	36,650	36,171	40,381	38,902	38,611	38,081
United States	3,298	3,295	2,998	3,450	3,250	3,250
World Total	39,948	39,466	43,379	42,352	41,861	41,331
TY Imports						
Angola	360	430	496	450	450	450
Bangladesh	53	114	1,290	600	850	600
Brazil	732	712	588	350	700	700
Cameroon	450	550	610	525	530	530
China	2,900	3,483	4,168	4,500	4,700	4,700
Cote d'Ivoire	1,265	830	950	1,100	800	800
Cuba	330	413	377	500	500	500
European Union	1,313	1,375	1,556	1,580	1,500	1,500
Ghana	595	725	590	500	600	600
Indonesia	1,960	650	1,225	1,400	1,600	1,600
Iran	1,500	2,220	1,650	1,500	1,600	1,600
Iraq	1,478	1,294	1,080	1,100	1,200	1,200
Japan	650	690	669	650	700	700
Kenya	400	410	440	450	460	460
Malaysia	1,006	885	989	950	1,000	1,000
Mexico	680	746	658	700	700	700
Mozambique	445	500	500	480	500	500
Nepal	351	340	510	500	400	450
Nigeria	3,400	2,400	3,200	3,500	3,000	2,500
Philippines	1,500	1,000	1,800	1,800	1,800	1,800
Saudi Arabia	1,193	1,326	1,410	1,460	1,550	1,550
Senegal	1,200	1,075	1,200	1,100	1,100	1,100
South Africa	870	990	910	980	950	950
United Arab Emirates	430	440	450	460	460	460
Venezuela	375	500	480	500	500	500
Others	11,038	11,715	12,433	11,046	10,728	11,068
Subtotal	36,474	35,813	40,229	38,681	38,878	38,518
Unaccounted	2,834	2,978	2,395	2,901	2,163	2,013
United States	640	675	755	770	820	800
World Total	39,948	39,466	43,379	42,352	41,861	41,331

TY=Trade Year, see Endnotes. Note about dates: 2014/15 is calendar year 2015, 2013/14 is calendar year 2014, and so on.

World Rice Production, Consumption, and Stocks
Local Marketing Years, Thousand Metric Tons

	2011/12	2012/13	2013/14	2014/15	2015/16 Nov	2015/16 Dec
Milled Production						
Bangladesh	33,700	33,820	34,390	34,500	34,600	34,600
Brazil	7,888	8,037	8,300	8,465	8,000	8,000
Burma	11,473	11,715	11,957	12,600	12,200	12,200
Cambodia	4,268	4,670	4,725	4,700	4,350	4,350
China	140,700	143,000	142,530	144,560	145,500	145,500
Egypt	4,250	4,675	4,750	4,530	4,000	4,000
India	105,310	105,240	106,646	104,800	103,500	100,000
Indonesia	36,500	36,550	36,300	35,760	36,300	36,300
Japan	7,812	7,923	7,937	7,842	7,900	7,900
Korea, South	4,224	4,006	4,230	4,241	4,258	4,327
Pakistan	6,200	5,800	6,700	6,900	6,900	6,900
Philippines	10,710	11,428	11,858	11,915	11,500	11,250
Sri Lanka	3,138	2,675	2,840	2,850	3,300	3,300
Thailand	20,460	20,200	20,460	18,750	16,400	16,400
Vietnam	27,152	27,537	28,161	28,074	28,200	28,200
Others	38,020	39,144	40,537	40,630	40,533	40,034
Subtotal	461,805	466,420	472,321	471,117	467,441	463,261
United States	5,866	6,348	6,117	7,068	6,057	6,057
World Total	467,671	472,768	478,438	478,185	473,498	469,318
Consumption and Residual						
Bangladesh	34,300	34,500	34,900	35,200	35,500	35,500
Brazil	7,928	7,850	7,900	7,900	7,900	7,900
Burma	10,200	10,400	10,450	10,550	10,500	10,500
Cambodia	3,400	3,550	3,650	3,700	3,600	3,600
China	139,600	144,000	146,300	147,600	150,000	150,000
Egypt	3,620	4,050	4,000	4,000	4,000	4,000
India	93,334	94,031	99,180	98,000	99,000	98,000
Indonesia	38,188	38,127	38,500	38,500	38,650	38,650
Japan	8,396	8,367	8,285	8,308	8,375	8,375
Korea, South	4,880	4,489	4,422	4,448	4,360	4,355
Nepal	3,677	3,353	3,811	3,600	3,500	3,550
Nigeria	5,600	5,300	5,800	5,800	6,000	5,850
Philippines	12,860	12,850	12,850	13,200	13,250	13,250
Thailand	10,400	10,600	10,875	11,700	12,000	11,800
Vietnam	19,650	21,900	22,000	22,000	22,100	22,000
Others	56,912	59,038	61,312	61,110	61,377	61,243
Subtotal	457,466	465,099	477,616	477,886	482,176	480,598
United States	3,492	3,779	3,977	4,117	4,043	4,043
World Total	460,958	468,878	481,593	482,003	486,219	484,641
Ending Stocks						
China	45,023	46,826	46,811	47,660	47,500	47,460
India	25,100	25,440	22,757	17,686	13,160	11,186
Indonesia	7,403	6,476	5,501	4,161	3,411	3,411
Japan	2,735	2,857	3,108	3,212	3,362	3,362
Korea, South	755	780	899	1,140	1,464	1,580
Philippines	1,509	1,487	1,695	2,210	2,160	2,110
Thailand	9,330	12,808	11,724	10,074	5,274	4,974
Others	13,666	12,884	14,039	16,046	13,420	13,103
Subtotal	105,521	109,558	106,534	102,189	89,751	87,186
United States	1,303	1,156	1,025	1,552	1,264	1,232
World Total	106,824	110,714	107,559	103,741	91,015	88,418

Note: All data are reported on a milled basis.

Regional Rice Imports, Production, Consumption, and Stocks

Thousand Metric Tons

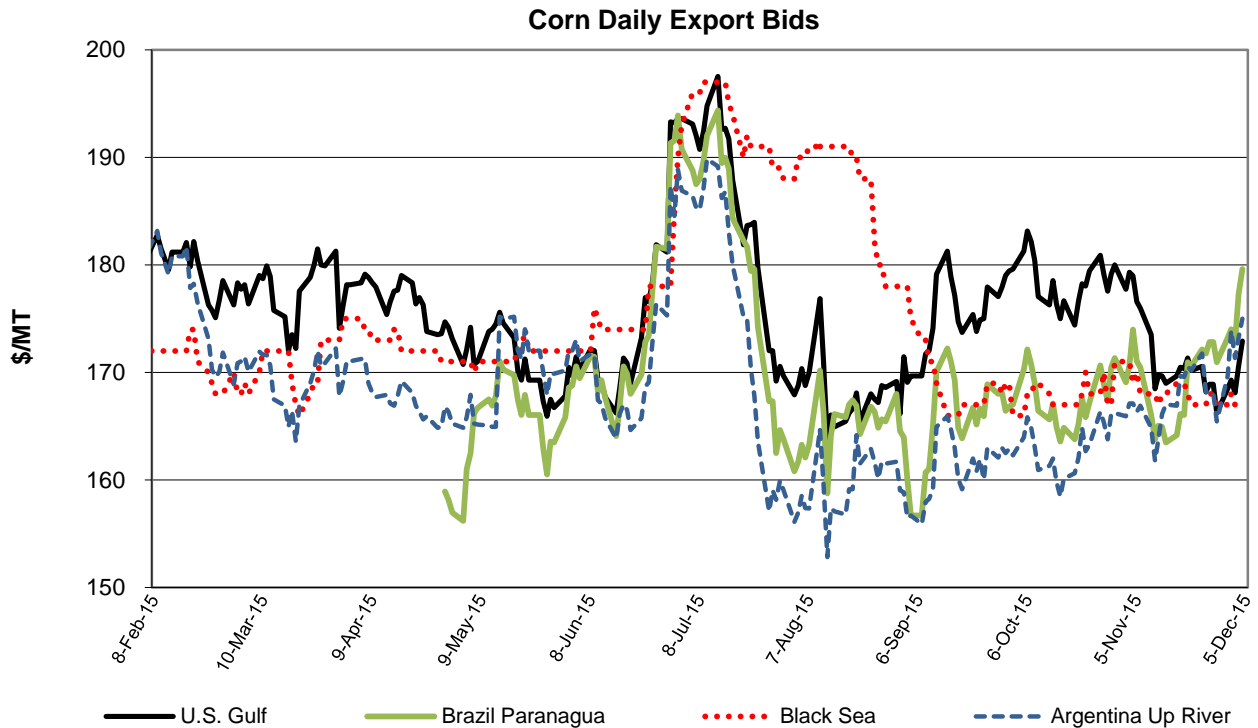
	2011/12	2012/13	2013/14	2014/15	Nov 2015/16	Dec 2015/16
TY Imports						
North America	1,664	1,776	1,771	1,820	1,880	1,860
Caribbean	845	971	901	1,075	1,075	1,075
South America	1,896	1,843	1,826	1,685	1,897	1,897
Other Europe	114	125	89	105	125	125
Former Soviet Union - 12	456	537	554	446	476	496
Middle East	6,455	7,152	6,637	6,275	6,570	6,620
North Africa	777	487	480	490	485	485
Sub-Saharan Africa	12,135	11,740	12,934	12,320	11,740	11,390
East Asia	4,389	5,332	5,761	6,035	6,355	6,355
South Asia	737	722	2,581	1,570	1,420	1,220
Southeast Asia	5,488	3,606	5,020	5,315	5,450	5,540
Others	2,158	2,197	2,430	2,315	2,225	2,255
Total	37,114	36,488	40,984	39,451	39,698	39,318
Production						
North America	5,979	6,479	6,248	7,247	6,192	6,192
Caribbean	1,002	974	1,040	1,065	987	987
South America	15,215	15,852	16,384	16,577	16,289	16,300
European Union - 28	2,139	2,100	1,937	1,881	1,930	1,930
Former Soviet Union - 12	1,294	1,294	1,205	1,185	1,205	1,205
Middle East	2,170	2,251	2,450	2,443	2,392	2,392
North Africa	4,289	4,704	4,789	4,530	4,000	4,000
Sub-Saharan Africa	12,997	13,376	14,006	14,464	14,485	14,229
East Asia	155,508	157,859	157,794	159,443	160,428	160,497
South Asia	152,067	150,895	154,392	152,651	151,920	148,420
Southeast Asia	113,649	115,490	116,867	115,475	112,511	112,261
Others	1,362	1,494	1,326	1,224	1,159	905
Total	467,671	472,768	478,438	478,185	473,498	469,318
Domestic Consumption						
North America	4,668	4,977	5,202	5,341	5,273	5,273
Central America	1,156	1,171	1,193	1,243	1,217	1,217
Caribbean	1,977	1,964	1,973	2,131	2,078	2,078
South America	14,180	14,404	14,556	14,613	14,809	14,711
European Union - 28	3,300	3,250	3,250	3,265	3,280	3,280
Former Soviet Union - 12	1,422	1,559	1,535	1,434	1,451	1,476
Middle East	8,603	8,854	9,029	8,925	8,940	8,990
North Africa	4,045	4,572	4,480	4,460	4,460	4,460
Sub-Saharan Africa	23,811	24,777	26,643	26,098	26,441	26,155
East Asia	156,232	160,365	162,627	163,731	166,005	166,000
South Asia	137,234	137,576	143,946	143,391	144,620	143,620
Southeast Asia	99,148	102,008	103,102	104,581	105,041	104,861
Others	661	707	676	520	540	495
Total	456,437	466,184	478,212	479,733	484,155	482,616
Ending Stocks						
North America	1,455	1,345	1,176	1,704	1,378	1,346
Central America	235	189	208	253	245	245
Caribbean	343	279	261	226	210	210
South America	1,606	1,491	1,788	1,995	1,858	1,796
European Union - 28	1,146	1,188	1,163	1,218	1,108	1,108
Middle East	1,526	2,039	1,836	1,519	1,511	1,491
North Africa	487	427	602	916	532	541
Sub-Saharan Africa	2,085	2,297	1,820	2,518	1,847	1,602
East Asia	48,887	50,826	51,183	52,287	52,627	52,703
South Asia	27,511	27,019	25,731	21,607	16,546	14,622
Southeast Asia	21,369	23,197	21,395	19,204	12,899	12,544
Oceania	40	238	241	182	102	68
Others	134	179	155	112	152	142
Total	106,824	110,714	107,559	103,741	91,015	88,418

NOTES: Regional definitions appear on last page of this circular. Imports are reported on a trade year basis. All other data are reported using local marketing years.

COARSE GRAINS: WORLD MARKETS AND TRADE

OVERVIEW

World corn production for 2015/16 is lower with reductions for India and South Africa more than offsetting the gain for Canada. Global trade is little changed overall. Exports are raised for Brazil and Canada but lowered for the United States and India. The U.S. season-average farm price is unchanged.



PRICES

Since the release of the November WASDE report, U.S. and Black Sea corn quotes have dropped slightly. U.S. corn export prices have been pressured by a relative lack of competitiveness. In comparison, Argentine and Brazilian corn quotes are up (and are now above U.S. Gulf prices), supported by continued strong foreign demand and seasonally tightening old crop supplies.

TRADE CHANGES IN 2015/16

Selected Exporters

- **U.S. corn** is cut 1.5 million tons to 44.5 million, reflecting the sluggish pace of sales and shipments.
- **Brazilian corn** is boosted 1.0 million tons to a new record 34.0 million based on the stronger-than-expected pace of shipments.
- **Canadian corn** is doubled to 1.0 million tons on larger exportable supplies.
- **Indian corn** is lowered 500,000 tons to 1.0 million on the reduced crop, which is expected to be the smallest since 2009/10.
- **South African corn** is up 200,000 tons to 1.0 million based on higher-than-expected old crop shipments (despite lower prospects for 2015/16 production).
- **Argentine sorghum** is down 300,000 tons to 1.2 million on a smaller crop. Mostly offsetting this reduction, U.S. and Australian sorghum are raised 100,000 tons each to 7.6 million and 1.0 million, respectively.

Selected Importers

- **Canadian corn** is lowered 500,000 tons to 1.0 million with its second-largest crop on record.
- **Chilean corn** is up 200,000 tons to 1.8 million as corn is expected to compensate for reduced oats feeding.
- **South African corn** is boosted 300,000 tons to 500,000 with reduced crop prospects.
- **Taiwanese corn** is cut 200,000 tons to 4.1 million on expectations of moderating growth based on the previous year. (2014/15 imports are also lowered 379,000 tons to 3.8 million).

World Coarse Grain Trade
October/September Year, Thousand Metric Tons

	2011/12	2012/13	2013/14	2014/15	2015/16 Nov	2015/16 Dec
TY Exports						
Argentina	22,308	29,497	16,630	20,996	20,505	20,205
Australia	7,279	6,410	7,003	7,272	7,325	7,425
Brazil	12,677	26,078	22,059	21,954	33,015	34,015
Canada	3,853	4,658	5,460	3,594	3,900	4,400
European Union	7,177	8,914	7,841	15,071	9,305	9,275
India	4,858	5,541	4,524	1,450	2,000	1,500
Paraguay	2,188	2,861	2,718	3,031	2,305	2,305
Russia	5,997	4,365	7,043	9,125	7,110	7,110
Serbia	2,345	628	1,755	2,925	1,725	1,725
Ukraine	17,447	15,527	24,125	24,020	18,680	18,680
Others	7,127	7,104	8,691	7,233	6,845	7,020
Subtotal	93,256	111,583	107,849	116,671	112,715	113,660
United States	40,106	20,586	56,772	56,340	53,835	52,435
World Total	133,362	132,169	164,621	173,011	166,550	166,095
TY Imports						
Algeria	3,741	3,289	4,946	4,854	4,810	4,810
Canada	764	523	714	1,693	1,610	1,035
Chile	1,523	1,327	1,621	1,709	1,750	2,000
China	7,924	5,604	12,445	25,699	17,250	17,250
Colombia	4,103	4,090	4,795	4,747	4,830	4,830
Dominican Republic	1,054	1,046	1,011	1,199	1,100	1,100
Egypt	7,252	5,096	8,776	7,929	8,055	8,055
European Union	6,908	11,777	16,295	9,255	16,255	16,255
Indonesia	1,724	2,719	3,501	3,400	3,000	3,000
Iran	5,700	4,800	6,600	8,100	6,000	6,000
Israel	1,530	1,564	2,073	1,624	1,975	1,975
Japan	17,730	17,743	17,501	16,725	16,975	16,975
Jordan	1,311	1,406	1,672	1,459	1,575	1,575
Kenya	490	202	894	1,000	1,100	1,100
Korea, South	7,726	8,265	10,499	10,263	10,090	10,090
Libya	829	1,220	1,493	1,685	1,550	1,650
Malaysia	3,309	3,048	3,476	3,250	3,600	3,500
Mexico	12,819	7,627	11,317	11,570	11,225	11,225
Morocco	2,479	1,831	2,858	2,217	2,300	2,300
Peru	1,927	2,404	2,336	2,863	2,625	2,625
Saudi Arabia	10,485	12,390	11,331	10,924	11,525	11,525
Taiwan	4,478	4,398	4,356	3,921	4,400	4,200
Tunisia	1,071	1,610	1,449	1,525	1,500	1,500
Venezuela	2,596	2,154	2,627	2,433	2,000	2,100
Vietnam	1,600	1,700	2,800	3,500	3,000	3,000
Others	15,944	15,462	17,468	18,618	16,400	16,875
Subtotal	127,017	123,295	154,854	162,162	156,500	156,550
Unaccounted	3,203	2,359	6,445	7,562	7,050	6,515
United States	3,142	6,515	3,322	3,287	3,000	3,030
World Total	133,362	132,169	164,621	173,011	166,550	166,095

TY=Trade Year, see Endnotes.

World Coarse Grains Production, Consumption, and Stocks
Local Marketing Years, Thousand Metric Tons

	2011/12	2012/13	2013/14	2014/15	2015/16 Nov	2015/16 Dec
Production						
Argentina	30,105	37,246	35,665	33,532	34,061	33,461
Australia	12,257	11,414	12,158	11,651	12,775	12,675
Brazil	75,884	84,253	82,603	87,603	84,083	84,083
Canada	22,921	24,445	28,745	21,992	23,668	25,660
China	198,635	212,192	225,070	222,146	231,500	231,500
Ethiopia	12,264	12,286	14,468	13,350	12,400	12,400
European Union	149,923	145,942	158,916	170,644	150,456	150,430
India	42,058	39,910	43,216	41,971	40,100	39,100
Indonesia	8,850	8,500	9,100	8,800	9,600	9,600
Mexico	25,689	28,881	32,020	32,390	31,325	31,325
Nigeria	17,421	18,573	19,292	19,015	17,950	17,950
Russia	33,077	28,658	35,735	40,386	39,000	39,000
South Africa	13,268	12,873	15,518	11,277	13,370	12,620
Turkey	11,299	10,595	13,075	9,475	14,075	14,075
Ukraine	33,476	29,527	39,918	39,345	32,825	32,825
Others	147,133	146,743	148,432	156,156	154,217	153,704
Subtotal	834,260	852,038	913,931	919,733	901,405	900,408
United States	322,451	285,311	367,089	377,234	368,156	368,156
World Total	1,156,711	1,137,349	1,281,020	1,296,967	1,269,561	1,268,564
Domestic Consumption						
Argentina	10,510	12,050	13,695	14,332	14,976	14,976
Brazil	54,653	55,803	58,028	59,978	61,843	61,868
Canada	20,285	20,339	22,372	21,319	21,511	21,803
China	196,192	209,671	223,600	228,550	234,775	234,775
Egypt	12,736	12,910	14,080	14,809	15,458	15,458
European Union	151,460	153,095	164,105	163,270	160,420	161,445
India	37,650	35,075	37,600	40,000	39,450	39,050
Indonesia	10,500	10,900	11,900	12,200	12,700	12,700
Iran	10,320	10,520	11,320	12,020	12,720	12,720
Japan	17,990	18,030	17,640	16,975	17,125	17,125
Mexico	37,985	36,195	40,885	41,925	42,790	42,790
Nigeria	17,321	18,700	19,350	18,950	18,150	18,150
Russia	27,728	25,134	28,619	31,139	31,600	31,600
Turkey	11,755	13,005	13,430	13,080	14,130	14,130
Ukraine	15,559	14,661	15,927	15,185	13,905	13,905
Others	216,152	220,030	228,026	235,834	238,412	238,331
Subtotal	866,896	859,898	928,832	953,204	950,843	949,566
United States	288,857	275,537	305,048	311,344	314,689	315,323
World Total	1,155,753	1,135,435	1,233,880	1,264,548	1,265,532	1,264,889
Ending Stocks						
Brazil	4,821	9,559	14,257	10,889	10,041	9,089
Canada	3,390	3,024	4,648	3,342	3,294	4,059
China	60,362	68,378	82,260	101,517	115,441	115,417
European Union	15,745	13,083	15,531	17,992	14,474	13,597
Iran	4,684	4,654	5,094	7,234	6,174	6,174
Mexico	1,857	1,628	3,583	4,807	3,984	4,067
Saudi Arabia	3,211	3,391	3,888	3,872	3,993	3,992
Others	39,899	36,454	47,268	46,657	40,593	40,687
Subtotal	133,969	140,171	176,529	196,310	197,994	197,082
United States	27,819	23,531	34,313	46,951	49,170	49,854
World Total	161,788	163,702	210,842	243,261	247,164	246,936

Regional Coarse Grains Imports, Production, Consumption, and Stocks

Thousand Metric Tons

	2011/12	2012/13	2013/14	2014/15	Nov 2015/16	Dec 2015/16
TY Imports						
North America	16,725	14,665	15,353	16,550	15,835	15,290
Central America	2,769	2,470	2,923	3,440	3,350	3,375
Caribbean	2,156	2,327	2,330	2,471	2,410	2,410
South America	11,967	11,812	13,182	13,349	12,750	13,150
European Union - 28	6,908	11,777	16,295	9,255	16,255	16,255
Former Soviet Union - 12	1,038	725	832	807	815	815
Middle East	23,515	25,076	26,613	27,578	24,740	24,840
North Africa	15,372	13,046	19,522	18,210	18,215	18,315
Sub-Saharan Africa	3,328	2,745	3,629	4,380	4,220	4,520
East Asia	38,040	36,163	44,880	56,708	48,815	48,615
Southeast Asia	7,317	8,058	11,287	11,385	10,780	10,680
Others	1,024	946	1,330	1,316	1,315	1,315
Total	130,159	129,810	158,176	165,449	159,500	159,580
Production						
North America	371,061	338,637	427,854	431,616	423,149	425,141
South America	119,641	136,243	132,000	134,652	132,418	131,305
European Union - 28	149,923	145,942	158,916	170,644	150,456	150,430
Other Europe	9,497	6,570	8,813	10,696	8,446	8,446
Former Soviet Union - 12	78,648	68,221	87,645	91,729	83,231	83,231
Middle East	20,412	18,769	21,737	17,957	22,796	22,796
North Africa	11,142	10,126	11,647	11,192	12,532	12,532
Sub-Saharan Africa	99,469	103,590	103,848	105,158	102,920	102,170
East Asia	200,771	214,639	227,482	224,575	233,909	233,909
South Asia	50,303	48,559	52,256	51,019	48,958	47,958
Southeast Asia	28,379	29,138	30,968	30,883	32,503	32,503
Oceania	12,813	12,082	12,804	12,323	13,436	13,336
Others	4,652	4,833	5,050	4,523	4,807	4,807
Total	1,156,711	1,137,349	1,281,020	1,296,967	1,269,561	1,268,564
Domestic Consumption						
North America	347,127	332,071	368,305	374,588	378,990	379,916
South America	86,935	90,039	94,660	97,512	100,438	100,467
European Union - 28	151,460	153,095	164,105	163,270	160,420	161,445
Other Europe	8,375	7,100	7,702	8,029	8,040	8,045
Former Soviet Union - 12	54,378	50,230	55,633	57,837	57,311	57,311
Middle East	41,186	43,027	45,890	45,381	47,866	47,931
North Africa	25,266	24,941	27,998	30,197	31,140	31,240
Sub-Saharan Africa	97,790	103,311	103,168	107,141	105,045	105,045
East Asia	228,717	243,025	257,824	262,100	268,746	268,546
South Asia	45,733	43,244	46,591	49,213	48,728	48,328
Southeast Asia	34,612	35,867	37,904	40,140	41,565	41,465
Oceania	6,518	6,132	5,765	5,323	5,926	5,926
Others	9,556	9,573	10,080	10,179	10,439	10,484
Total	1,137,653	1,141,655	1,225,625	1,250,910	1,264,654	1,266,149
Ending Stocks						
North America	33,066	28,183	42,544	55,100	56,448	57,980
South America	9,550	15,440	21,178	16,815	14,961	14,103
European Union - 28	15,745	13,083	15,531	17,992	14,474	13,597
Other Europe	1,024	603	766	1,271	842	842
Former Soviet Union - 12	6,185	5,037	6,991	7,727	6,282	6,282
Middle East	10,547	10,059	11,817	13,063	12,653	12,748
North Africa	5,504	3,526	5,719	5,649	5,202	5,346
Sub-Saharan Africa	9,272	9,055	9,971	9,886	8,330	8,291
East Asia	63,392	71,035	85,590	104,735	118,741	118,638
South Asia	2,676	2,722	4,261	4,763	3,183	3,093
Southeast Asia	3,061	3,275	4,396	4,179	3,762	3,757
Oceania	978	915	1,133	933	1,235	1,038
Others	788	769	945	1,148	1,051	1,221
Total	161,788	163,702	210,842	243,261	247,164	246,936

NOTES: Regional definitions appear on last page of this circular. Imports are reported on a trade year basis. All other data are reported using local marketing years.

World Corn Trade
October/September Year, Thousand Metric Tons

	2011/12	2012/13	2013/14	2014/15	2015/16 Nov	2015/16 Dec
TY Exports						
Argentina	16,501	22,789	12,846	18,442	17,000	17,000
Brazil	12,674	26,044	22,041	21,909	33,000	34,000
Canada	494	1,813	1,917	395	500	1,000
European Union	3,287	2,193	2,405	4,030	1,000	1,000
India	4,674	4,768	3,889	1,100	1,500	1,000
Paraguay	2,188	2,858	2,714	3,012	2,300	2,300
Russia	2,027	1,917	4,192	3,200	4,000	4,000
Serbia	2,331	601	1,736	2,900	1,700	1,700
South Africa	1,831	2,398	2,104	745	800	1,000
Ukraine	15,157	12,726	20,004	19,800	15,000	15,000
Others	4,176	4,158	5,622	5,489	5,235	5,235
Subtotal	65,340	82,265	79,470	81,022	82,035	83,235
United States	38,342	18,262	50,684	46,773	46,000	44,500
World Total	103,682	100,527	130,154	127,795	128,035	127,735
TY Imports						
Algeria	3,231	2,918	4,156	4,116	4,200	4,200
Canada	747	493	679	1,558	1,500	1,000
Chile	906	844	1,456	1,516	1,600	1,800
China	5,231	2,702	3,277	5,516	3,000	3,000
Colombia	3,209	3,266	4,436	4,496	4,500	4,500
Cuba	743	911	928	886	900	900
Dominican Republic	1,054	1,046	1,011	1,199	1,100	1,100
Egypt	7,154	5,059	8,726	7,826	8,000	8,000
European Union	6,113	11,362	15,952	8,756	16,000	16,000
Guatemala	691	678	767	881	900	900
Indonesia	1,724	2,719	3,501	3,400	3,000	3,000
Iran	4,000	3,700	5,500	6,200	4,500	4,500
Israel	1,221	1,224	1,652	1,296	1,600	1,600
Japan	14,892	14,412	15,121	14,656	14,700	14,700
Kenya	400	100	800	900	1,000	1,000
Korea, South	7,636	8,174	10,406	10,179	10,000	10,000
Malaysia	3,309	3,048	3,476	3,250	3,600	3,500
Mexico	11,172	5,676	10,954	11,269	10,500	10,500
Morocco	1,943	1,684	2,349	1,941	2,100	2,100
Peru	1,772	2,254	2,232	2,741	2,500	2,500
Saudi Arabia	1,816	2,063	2,684	2,899	4,000	4,000
Taiwan	4,341	4,232	4,189	3,821	4,300	4,100
Tunisia	853	846	993	1,042	1,100	1,100
Venezuela	2,596	2,154	2,626	2,433	2,000	2,100
Vietnam	1,600	1,700	2,800	3,500	3,000	3,000
Others	12,335	11,620	13,737	14,936	13,325	13,750
Subtotal	100,689	94,885	124,408	121,213	122,925	122,850
Unaccounted	2,228	1,377	5,019	5,773	4,360	4,135
United States	765	4,265	727	809	750	750
World Total	103,682	100,527	130,154	127,795	128,035	127,735

TY=Trade Year, see Endnotes.

World Corn Production, Consumption, and Stocks
Local Marketing Years, Thousand Metric Tons

	2011/12	2012/13	2013/14	2014/15	2015/16 Nov	2015/16 Dec
Production						
Argentina	21,000	27,000	26,000	26,500	25,600	25,600
Brazil	73,000	81,500	80,000	85,000	81,500	81,500
Canada	11,359	13,060	14,194	11,487	12,300	13,600
China	192,780	205,614	218,490	215,646	225,000	225,000
Egypt	5,500	5,800	5,800	5,960	6,000	6,000
Ethiopia	6,069	6,158	7,451	6,500	6,000	6,000
European Union	68,123	58,896	64,635	75,793	57,751	57,751
India	21,759	22,258	24,259	23,670	22,500	21,000
Indonesia	8,850	8,500	9,100	8,800	9,600	9,600
Mexico	18,726	21,591	22,880	25,480	23,500	23,500
Nigeria	9,250	7,630	7,700	7,515	7,000	7,000
Philippines	7,130	7,261	7,532	7,671	7,800	7,800
Russia	6,962	8,213	11,635	11,325	13,500	13,500
South Africa	12,759	12,365	14,925	10,800	12,750	12,000
Ukraine	22,838	20,922	30,900	28,450	23,000	23,000
Others	90,878	90,343	94,665	97,136	94,250	94,200
Subtotal	576,983	597,111	640,166	647,733	628,051	627,051
United States	312,789	273,192	351,272	361,091	346,815	346,815
World Total	889,772	870,303	991,438	1,008,824	974,866	973,866
Total Consumption						
Argentina	7,000	7,900	8,800	9,400	10,000	10,000
Brazil	51,500	52,500	55,000	57,000	59,000	59,000
Canada	11,636	11,605	12,700	12,848	13,350	13,350
China	188,000	200,000	208,000	202,000	214,000	214,000
Egypt	11,700	12,000	13,200	13,900	14,500	14,500
European Union	69,500	69,600	76,500	78,000	75,500	76,000
India	17,200	17,500	19,600	22,000	22,300	21,400
Indonesia	10,500	10,900	11,900	12,200	12,700	12,700
Japan	14,900	14,500	15,100	14,700	14,700	14,700
Korea, South	7,815	8,481	9,891	10,200	10,100	10,100
Mexico	29,000	27,000	31,700	34,450	34,300	34,300
Philippines	7,400	7,400	8,000	8,500	8,600	8,600
Russia	4,700	6,400	7,500	8,100	9,300	9,300
South Africa	10,700	11,000	11,500	11,200	11,400	11,400
Ukraine	7,800	8,100	9,700	9,400	8,400	8,400
Others	140,994	141,976	150,236	155,571	156,138	156,338
Subtotal	607,090	602,214	656,462	673,694	670,033	668,438
United States	277,961	262,973	292,965	301,851	301,131	301,766
World Total	885,051	865,187	949,427	975,545	971,164	970,204
Ending Stocks						
Brazil	4,212	9,150	13,972	10,572	9,672	8,672
China	59,335	67,570	81,315	100,464	114,438	114,414
Egypt	2,220	1,076	2,398	2,274	1,738	1,764
European Union	6,682	5,147	6,829	9,348	6,476	6,099
Iran	3,336	3,236	4,476	5,816	4,956	4,956
Korea, South	1,489	1,265	1,860	1,921	1,898	1,898
Mexico	1,316	1,061	2,694	4,209	3,393	3,409
Others	24,074	23,538	30,077	29,611	24,636	25,306
Subtotal	102,664	112,043	143,621	164,215	167,207	166,518
United States	25,122	20,859	31,292	43,977	44,701	45,336
World Total	127,786	132,902	174,913	208,192	211,908	211,854

Regional Corn Imports, Production, Consumption, and Stocks

Thousand Metric Tons

	2011/12	2012/13	2013/14	2014/15	Nov 2015/16	Dec 2015/16
TY Imports						
North America	12,684	10,434	12,360	13,636	12,750	12,250
Central America	2,766	2,470	2,922	3,440	3,350	3,375
South America	9,886	9,651	12,027	12,031	11,550	11,850
European Union - 28	6,113	11,362	15,952	8,756	16,000	16,000
Former Soviet Union - 12	328	324	464	465	490	490
Middle East	10,853	10,942	13,812	15,197	13,400	13,500
North Africa	13,827	11,154	17,036	15,609	16,150	16,150
Sub-Saharan Africa	2,660	2,096	2,937	3,735	3,725	4,025
East Asia	32,282	29,673	33,072	34,272	32,100	31,900
Southeast Asia	7,304	8,040	11,246	11,370	10,765	10,665
Caribbean	2,156	2,327	2,330	2,471	2,410	2,410
Others	595	677	977	1,040	985	985
Total	101,454	99,150	125,135	122,022	123,675	123,600
Production						
North America	342,874	307,843	388,346	398,058	382,615	383,915
South America	105,578	120,997	117,456	122,977	118,725	118,675
European Union - 28	68,123	58,896	64,635	75,793	57,751	57,751
Other Europe	7,810	4,915	7,210	8,945	6,676	6,676
Former Soviet Union - 12	34,121	32,310	46,916	43,725	39,910	39,910
Middle East	7,164	7,480	8,138	7,853	9,043	9,043
North Africa	5,722	5,891	6,001	6,161	6,201	6,201
Sub-Saharan Africa	62,102	60,564	64,296	60,868	59,601	58,851
East Asia	194,585	207,760	220,595	217,767	227,113	227,113
South Asia	28,646	29,634	31,911	31,330	29,970	28,470
Central America	3,602	3,743	3,893	3,366	3,650	3,650
Southeast Asia	28,138	28,893	30,721	30,638	32,258	32,258
Others	1,307	1,377	1,320	1,343	1,353	1,353
Total	889,772	870,303	991,438	1,008,824	974,866	973,866
Domestic Consumption						
North America	318,597	301,578	337,365	349,149	348,781	349,416
South America	76,491	79,031	83,666	86,906	89,305	89,655
European Union - 28	69,500	69,600	76,500	78,000	75,500	76,000
Other Europe	6,392	5,194	5,847	6,075	6,020	6,025
Former Soviet Union - 12	16,420	18,085	21,135	21,385	21,605	21,605
Middle East	17,585	18,710	19,785	21,835	22,635	22,735
North Africa	18,000	18,450	20,800	22,100	23,100	23,100
Sub-Saharan Africa	60,348	60,033	62,828	62,795	61,088	61,088
East Asia	217,047	229,434	239,295	232,955	245,225	245,025
South Asia	23,875	24,380	27,182	29,805	30,170	29,270
Southeast Asia	34,357	35,609	37,653	39,860	41,310	41,210
Central America	6,350	6,175	6,650	6,685	6,910	6,935
Others	3,344	3,556	3,586	3,770	3,770	3,790
Total	868,306	869,835	942,292	961,320	975,419	975,854
Ending Stocks						
North America	27,803	23,469	35,586	49,588	49,331	50,397
South America	8,193	13,482	18,761	14,850	12,979	12,275
European Union - 28	6,682	5,147	6,829	9,348	6,476	6,099
Other Europe	771	353	517	1,037	603	603
Former Soviet Union - 12	2,445	2,004	3,438	2,948	2,613	2,613
Middle East	4,510	4,228	5,957	7,070	6,593	6,633
North Africa	2,994	1,719	3,168	3,336	2,567	2,577
Sub-Saharan Africa	7,058	6,631	7,966	7,552	6,322	6,250
East Asia	61,841	69,734	84,134	103,205	117,246	117,143
South Asia	1,628	2,057	3,165	3,855	2,320	2,230
Southeast Asia	3,058	3,270	4,390	4,173	3,756	3,751
Central America	503	474	610	689	616	754
Others	300	334	392	541	486	529
Total	127,786	132,902	174,913	208,192	211,908	211,854

NOTES: Regional definitions appear on last page of this circular. Imports are reported on a trade year basis. All other data are reported using local marketing years.

World Barley Trade
October/September Year, Thousand Metric Tons

	2011/12	2012/13	2013/14	2014/15	2015/16 Nov	2015/16 Dec
TY Exports						
Argentina	3,631	3,647	2,829	1,598	2,000	2,000
Australia	5,819	4,621	6,262	5,268	6,000	6,000
Canada	1,437	1,316	1,714	1,384	1,700	1,700
European Union	3,646	6,473	4,926	10,642	8,000	8,000
India	52	542	546	300	400	400
Kazakhstan	659	151	575	500	500	500
Russia	3,668	2,366	2,762	5,800	3,000	3,000
Serbia	14	26	18	25	25	25
Turkey	103	0	9	10	25	25
Ukraine	2,166	2,659	3,827	4,000	3,500	3,500
Others	22	166	68	154	35	35
Subtotal	21,217	21,967	23,536	29,681	25,185	25,185
United States	179	163	336	292	300	300
World Total	21,396	22,130	23,872	29,973	25,485	25,485
TY Imports						
Algeria	501	364	778	723	600	600
Azerbaijan	49	14	78	125	100	100
Brazil	274	369	338	489	400	400
Chile	73	79	56	93	50	100
China	2,541	2,184	4,891	9,859	7,000	7,000
Colombia	301	232	253	249	275	275
European Union	364	52	58	268	100	100
Iran	1,700	1,100	1,100	1,900	1,500	1,500
Israel	276	244	304	278	325	325
Japan	1,257	1,356	1,294	1,097	1,200	1,200
Jordan	736	831	997	759	900	900
Kuwait	376	388	436	412	400	400
Libya	183	573	681	1,001	800	900
Mexico	144	47	108	186	125	125
Morocco	536	147	471	276	200	200
Peru	97	103	87	122	100	100
Saudi Arabia	8,600	10,200	8,500	8,000	7,500	7,500
Tunisia	218	764	456	483	400	400
United Arab Emirates	524	541	468	400	400	400
Uruguay	77	252	126	189	125	175
Others	1,579	1,368	1,571	1,449	1,025	950
Subtotal	20,406	21,208	23,051	28,358	23,525	23,650
Unaccounted	520	491	299	1,185	1,510	1,385
United States	470	431	522	430	450	450
World Total	21,396	22,130	23,872	29,973	25,485	25,485

TY=Trade Year, see Endnotes.

World Barley Production, Consumption, and Stocks
Local Marketing Years, Thousand Metric Tons

	2011/12	2012/13	2013/14	2014/15	2015/16 Nov	2015/16 Dec
Production						
Algeria	1,350	1,500	1,500	1,300	1,300	1,300
Argentina	4,500	5,000	4,750	2,900	3,400	3,400
Australia	8,221	7,472	9,174	8,014	8,900	8,700
Belarus	1,979	1,917	1,674	2,250	2,000	2,000
Canada	7,892	8,012	10,237	7,119	7,600	8,225
China	1,637	1,626	1,500	1,500	1,500	1,500
Ethiopia	1,592	1,782	2,053	2,100	1,900	1,900
European Union	51,883	54,875	59,674	60,460	60,697	60,732
India	1,663	1,619	1,752	1,831	1,600	1,600
Iran	2,900	2,770	2,800	3,200	3,300	3,300
Kazakhstan	2,593	1,500	2,539	2,412	2,600	2,600
Morocco	2,340	1,200	2,700	1,700	3,500	3,500
Russia	16,938	13,952	15,389	20,026	16,700	16,700
Turkey	7,000	5,500	7,300	4,000	7,400	7,400
Ukraine	9,098	6,935	7,561	9,450	8,700	8,700
Others	8,628	8,771	9,197	8,974	9,048	8,941
Subtotal	130,214	124,431	139,800	137,236	140,145	140,498
United States	3,370	4,768	4,719	3,953	4,666	4,666
World Total	133,584	129,199	144,519	141,189	144,811	145,164
Total Consumption						
Algeria	1,800	2,000	2,050	2,050	2,050	2,050
Argentina	1,200	1,300	1,700	1,500	1,500	1,500
Australia	3,300	3,000	2,800	2,600	2,600	2,600
Belarus	2,100	2,000	1,800	2,100	2,200	2,200
Canada	6,916	6,809	7,720	6,472	6,200	6,500
China	3,800	4,000	6,300	11,400	8,400	8,400
Ethiopia	1,600	1,725	2,000	2,100	2,025	2,025
European Union	51,200	51,000	53,400	51,000	52,600	53,100
Iran	4,100	4,300	4,500	4,600	4,800	4,800
Kazakhstan	1,825	1,375	2,000	1,900	2,100	2,100
Morocco	3,100	1,900	2,300	2,700	3,000	3,000
Russia	14,300	12,100	12,700	14,100	13,500	13,500
Saudi Arabia	7,225	8,325	8,625	8,125	8,225	8,225
Turkey	6,750	6,200	6,950	5,350	6,900	6,900
Ukraine	6,300	5,100	5,000	4,500	4,500	4,500
Others	15,795	16,135	16,757	16,871	16,758	16,843
Subtotal	131,047	126,790	136,422	136,754	140,527	141,141
United States	4,170	4,638	4,775	4,234	4,421	4,420
World Total	135,217	131,428	141,197	140,988	144,948	145,561
Ending Stocks						
Algeria	1,458	1,217	1,178	1,304	1,154	1,204
Canada	1,195	983	1,950	1,217	1,217	1,492
European Union	6,069	5,071	5,648	5,649	5,456	5,031
Iran	1,348	1,418	618	1,418	1,218	1,218
Russia	848	726	932	1,622	1,222	1,222
Saudi Arabia	2,814	3,006	3,396	3,486	3,276	3,276
Ukraine	1,172	873	972	1,471	1,176	1,176
Others	6,481	5,418	7,299	6,107	6,874	6,860
Subtotal	21,385	18,712	21,993	22,274	21,593	21,479
United States	1,306	1,750	1,791	1,711	2,087	2,109
World Total	22,691	20,462	23,784	23,985	23,680	23,588

Regional Barley Imports, Production, Consumption, and Stocks

Thousand Metric Tons

	2011/12	2012/13	2013/14	2014/15	Nov 2015/16	Dec 2015/16
TY Imports						
North America	620	499	639	741	675	600
South America	851	1,064	887	1,169	985	1,085
European Union - 28	364	52	58	268	100	100
Other Europe	209	127	163	130	160	160
Former Soviet Union - 12	697	375	362	337	320	320
Middle East	12,543	13,906	12,537	12,296	11,260	11,260
North Africa	1,482	1,885	2,433	2,581	2,050	2,150
Sub-Saharan Africa	100	52	116	138	65	65
East Asia	3,924	3,663	6,320	11,081	8,325	8,325
South Asia	67	7	12	15	10	10
Oceania	19	9	46	32	25	25
Total	20,876	21,639	23,573	28,788	23,975	24,100
Production						
North America	11,749	13,812	15,506	11,622	12,851	13,476
South America	5,547	6,102	5,893	3,921	4,500	4,393
European Union - 28	51,883	54,875	59,674	60,460	60,697	60,732
Other Europe	1,189	1,188	1,151	1,270	1,287	1,287
Former Soviet Union - 12	32,227	25,958	29,153	35,784	31,850	31,850
Middle East	11,705	9,689	12,047	8,658	12,358	12,358
North Africa	4,410	3,306	4,725	4,109	5,409	5,409
Sub-Saharan Africa	2,099	2,283	2,521	2,602	2,447	2,447
East Asia	1,962	1,920	1,800	1,801	1,790	1,790
South Asia	2,275	2,155	2,459	2,538	2,307	2,307
Oceania	8,538	7,911	9,590	8,424	9,315	9,115
Total	133,584	129,199	144,519	141,189	144,811	145,164
Domestic Consumption						
North America	11,786	12,347	13,195	11,406	11,321	11,620
South America	3,094	3,345	3,666	3,503	3,540	3,560
European Union - 28	51,200	51,000	53,400	51,000	52,600	53,100
Other Europe	1,366	1,298	1,298	1,389	1,422	1,422
Former Soviet Union - 12	26,268	22,339	23,451	24,505	24,355	24,355
Middle East	22,016	22,435	24,410	21,883	23,756	23,721
North Africa	6,186	5,560	6,230	7,159	7,108	7,208
Sub-Saharan Africa	2,133	2,285	2,555	2,640	2,615	2,615
East Asia	5,580	5,806	8,009	12,955	10,000	10,000
South Asia	2,202	2,067	1,913	2,112	2,012	2,012
Oceania	3,650	3,425	3,250	3,050	3,050	3,050
Total	135,481	131,907	141,377	141,602	141,779	142,663
Ending Stocks						
North America	2,621	3,014	3,980	3,186	3,503	3,869
South America	547	685	862	849	797	742
European Union - 28	6,069	5,071	5,648	5,649	5,456	5,031
Other Europe	205	223	208	196	196	196
Former Soviet Union - 12	2,760	2,193	2,554	3,843	2,908	2,908
Middle East	5,940	5,736	5,788	5,928	5,995	6,050
North Africa	2,449	1,740	2,482	2,239	2,556	2,690
Sub-Saharan Africa	283	330	408	508	372	405
East Asia	961	737	848	775	890	890
South Asia	280	142	255	247	152	152
Oceania	576	591	751	565	855	655
Total	22,691	20,462	23,784	23,985	23,680	23,588

NOTES: Regional definitions appear on last page of this circular. Imports are reported on a trade year basis. All other data are reported using local marketing years.

World Sorghum Trade
October/September Year, Thousand Metric Tons

	2011/12	2012/13	2013/14	2014/15	2015/16 Nov	2015/16 Dec
TY Exports						
Argentina	2,163	3,059	953	954	1,500	1,200
Australia	1,185	1,425	405	1,700	900	1,000
China	36	27	11	25	25	25
India	132	231	89	50	100	100
Kenya	16	32	51	40	30	30
Nigeria	75	50	50	100	50	50
Ukraine	113	124	229	150	150	150
Others	180	208	240	192	130	130
Subtotal	3,900	5,156	2,028	3,211	2,885	2,685
United States	1,549	2,136	5,717	9,249	7,500	7,600
World Total	5,449	7,292	7,745	12,460	10,385	10,285
TY Imports						
Chile	544	404	109	100	100	100
China	84	631	4,161	10,162	7,000	7,000
Colombia	592	591	104	0	50	50
Ethiopia	30	50	50	75	50	50
European Union	126	291	186	131	100	100
Japan	1,481	1,897	1,003	903	1,000	1,000
Kenya	74	102	94	100	100	100
Mexico	1,369	1,793	162	29	500	500
South Sudan	13	6	125	75	50	50
Sudan	125	175	75	75	75	75
Others	650	674	685	291	305	305
Subtotal	5,088	6,614	6,754	11,941	9,330	9,330
Unaccounted	358	435	988	492	1,055	925
United States	3	243	3	27	0	30
World Total	5,449	7,292	7,745	12,460	10,385	10,285

TY=Trade Year, see Endnotes.

World Sorghum Production, Consumption, and Stocks
Local Marketing Years, Thousand Metric Tons

	2011/12	2012/13	2013/14	2014/15	2015/16 Nov	2015/16 Dec
Production						
Argentina	4,200	4,700	4,400	3,500	4,500	3,900
Australia	2,239	2,230	1,282	2,104	2,100	2,200
Brazil	2,222	2,102	1,890	2,000	2,000	2,000
Burkina	1,500	1,924	1,880	1,836	1,900	1,900
Cameroon	1,150	1,100	1,150	1,150	1,150	1,150
Chad	648	1,172	745	900	900	900
China	2,051	2,556	2,700	2,600	2,600	2,600
Ethiopia	3,951	3,604	4,114	4,000	3,800	3,800
India	5,979	5,281	5,542	5,050	5,500	5,500
Mali	1,191	1,212	820	1,300	1,300	1,300
Mexico	6,425	6,174	8,500	6,270	7,150	7,150
Niger	807	1,376	1,287	1,000	1,100	1,100
Nigeria	6,900	5,943	6,592	6,700	6,150	6,150
Sudan	4,605	4,524	2,249	6,281	5,500	5,500
Tanzania	807	839	832	840	840	840
Others	7,131	6,675	7,036	6,685	6,832	6,882
Subtotal	51,806	51,412	51,019	52,216	53,322	52,872
United States	5,410	6,293	9,966	10,988	15,083	15,083
World Total	57,216	57,705	60,985	63,204	68,405	67,955
Total Consumption						
Argentina	1,900	2,300	2,700	2,800	2,900	2,900
Australia	1,105	1,105	905	605	1,205	1,205
Brazil	2,175	2,300	2,000	2,000	1,900	1,900
Burkina	1,500	1,900	1,900	1,800	1,900	1,900
Cameroon	1,175	1,110	1,165	1,175	1,175	1,175
Chad	650	1,150	850	900	900	900
China	2,200	3,200	6,800	12,600	9,700	9,700
Ethiopia	3,700	3,700	4,200	4,100	3,900	3,900
India	6,000	5,150	5,200	5,100	5,350	5,350
Japan	1,475	1,900	1,000	900	1,000	1,000
Mali	1,300	1,200	950	1,200	1,300	1,300
Mexico	8,100	8,100	8,300	6,600	7,600	7,600
Niger	950	1,200	1,300	1,100	1,100	1,100
Nigeria	6,800	5,900	6,550	6,650	6,050	6,050
Sudan	4,500	4,700	2,550	6,000	5,800	5,800
Others	9,547	9,098	8,478	8,060	8,056	8,081
Subtotal	54,561	52,815	55,918	61,628	61,728	61,336
United States	3,916	4,796	4,127	2,429	5,842	5,842
World Total	58,477	57,611	60,045	64,057	67,570	67,178
Ending Stocks						
Argentina	164	781	1,202	802	802	702
Brazil	472	272	151	138	228	228
China	366	326	376	513	388	388
India	206	109	364	264	314	314
Mexico	418	285	647	338	389	388
Nigeria	215	208	200	150	200	200
Sudan	609	588	357	708	478	478
Others	1,632	1,805	1,538	1,465	1,408	1,426
Subtotal	4,082	4,374	4,835	4,378	4,207	4,124
United States	583	385	864	468	1,472	1,499
World Total	4,665	4,759	5,699	4,846	5,679	5,623

Regional Sorghum Imports, Production, Consumption, and Stocks

Thousand Metric Tons

	2011/12	2012/13	2013/14	2014/15	Nov 2015/16	Dec 2015/16
TY Imports						
North America	1,372	2,036	165	56	500	530
South America	1,199	1,071	239	119	185	185
European Union - 28	126	291	186	131	100	100
Other Europe	0	0	0	0	0	0
Middle East	101	194	231	50	50	50
North Africa	54	0	41	5	5	5
Sub-Saharan Africa	557	586	557	457	405	405
East Asia	1,655	2,650	5,281	11,120	8,055	8,055
Southeast Asia	13	18	41	15	15	15
Others	14	11	16	15	15	15
Total	5,091	6,857	6,757	11,968	9,330	9,360
Production						
North America	11,835	12,467	18,466	17,258	22,233	22,233
Central America	312	339	335	335	335	335
Caribbean	92	92	94	94	94	94
South America	7,246	7,495	7,081	6,350	7,422	6,822
European Union - 28	671	473	703	880	747	797
Middle East	764	814	789	692	635	635
North Africa	847	763	755	756	756	756
Sub-Saharan Africa	24,802	24,783	22,782	26,701	25,604	25,604
East Asia	2,054	2,560	2,704	2,604	2,604	2,604
South Asia	6,124	5,426	5,687	5,195	5,645	5,645
Southeast Asia	54	55	57	55	55	55
Oceania	2,239	2,230	1,282	2,104	2,100	2,200
Others	176	208	250	180	175	175
Total	57,216	57,705	60,985	63,204	68,405	67,955
Domestic Consumption						
North America	12,016	12,896	12,427	9,029	13,442	13,442
Central America	320	325	325	330	340	340
Caribbean	92	92	94	94	94	94
South America	6,104	6,076	5,789	5,722	5,897	5,897
European Union - 28	760	795	880	995	845	870
Middle East	789	1,052	894	879	685	685
North Africa	908	756	794	756	756	756
Sub-Saharan Africa	24,850	25,038	23,500	26,669	26,049	26,049
East Asia	3,771	5,221	7,921	13,560	10,760	10,760
South Asia	6,155	5,305	5,360	5,260	5,510	5,510
Southeast Asia	68	68	61	90	65	65
Oceania	1,105	1,105	905	605	1,205	1,205
Others	55	80	25	30	30	30
Total	56,993	58,809	58,975	64,019	65,678	65,703
Ending Stocks						
North America	1,001	670	1,511	806	1,861	1,887
Central America	23	30	33	33	22	23
South America	717	1,145	1,426	1,016	1,081	981
European Union - 28	14	5	19	21	16	33
Middle East	56	65	47	35	35	35
North Africa	60	66	68	73	78	78
Sub-Saharan Africa	1,890	2,037	1,557	1,786	1,596	1,596
East Asia	451	413	466	605	479	479
South Asia	206	109	364	264	314	314
Oceania	230	195	187	186	181	181
Others	17	24	21	21	16	16
Total	4,665	4,759	5,699	4,846	5,679	5,623

NOTES: Regional definitions appear on last page of this circular. Imports are reported on a trade year basis. All other data are reported using local marketing years.

World Oats Trade
October/September Year, Thousand Metric Tons

	2011/12	2012/13	2013/14	2014/15	2015/16 Nov	2015/16 Dec
TY Exports						
Argentina	13	2	2	2	5	5
Australia	174	240	270	250	350	350
Canada	1,763	1,351	1,732	1,726	1,600	1,600
Chile	106	41	49	84	100	75
European Union	176	126	291	231	150	120
Russia	18	4	6	15	10	10
Ukraine	2	2	6	45	10	10
Others	7	10	14	8	10	10
Subtotal	2,259	1,776	2,370	2,361	2,235	2,180
United States	28	18	29	23	30	30
World Total	2,287	1,794	2,399	2,384	2,265	2,210
TY Imports						
Algeria	9	7	12	15	10	10
Bosnia and Herzegovina	3	2	3	5	5	5
Canada	11	9	26	10	10	10
China	68	87	116	162	250	250
Colombia	1	1	2	2	5	5
Ecuador	22	19	21	21	20	20
European Union	3	4	3	4	5	5
Japan	54	51	46	47	50	50
Mexico	134	111	93	86	100	100
Norway	49	36	38	5	40	40
Serbia	2	2	2	5	5	5
South Africa	11	11	19	50	25	25
Switzerland	56	44	51	49	50	50
Turkey	4	0	0	5	5	5
Uruguay	8	6	6	7	5	5
Others	7	0	1	0	0	0
Subtotal	442	390	439	473	585	585
Unaccounted	115	49	94	152	80	25
United States	1,730	1,355	1,866	1,759	1,600	1,600
World Total	2,287	1,794	2,399	2,384	2,265	2,210

TY=Trade Year, see Endnotes.

World Oats Production, Consumption, and Stocks
Local Marketing Years, Thousand Metric Tons

	2011/12	2012/13	2013/14	2014/15	2015/16 Nov	2015/16 Dec
Production						
Algeria	67	110	110	110	110	110
Argentina	345	496	445	525	485	485
Australia	1,262	1,121	1,255	1,087	1,300	1,300
Belarus	448	422	352	470	400	400
Brazil	354	361	380	300	300	300
Canada	3,158	2,830	3,906	2,979	3,350	3,430
Chile	451	680	610	421	760	470
China	600	600	580	600	600	600
European Union	7,927	7,909	8,380	7,845	7,719	7,621
Kazakhstan	258	200	305	226	250	250
Mexico	51	84	90	90	90	90
Norway	231	232	214	236	236	236
Russia	5,332	4,027	4,932	5,267	5,000	5,000
Turkey	218	210	210	210	210	210
Ukraine	506	630	467	610	375	375
Others	372	315	328	316	351	351
Subtotal	21,580	20,227	22,564	21,292	21,536	21,228
United States	728	892	938	1,019	1,300	1,300
World Total	22,308	21,119	23,502	22,311	22,836	22,528
Total Consumption						
Algeria	75	119	118	126	120	120
Argentina	350	500	425	525	500	500
Australia	1,100	925	950	875	900	900
Belarus	450	400	375	450	400	400
Brazil	350	350	375	300	290	290
Canada	1,361	1,592	1,660	1,676	1,650	1,650
Chile	400	600	570	365	650	375
China	625	675	700	750	875	875
European Union	7,800	7,700	8,075	7,675	7,675	7,675
Kazakhstan	225	225	275	225	250	250
Mexico	185	195	185	175	190	190
Norway	270	295	245	245	270	270
Russia	5,000	4,300	4,900	5,200	5,100	5,100
Turkey	215	215	215	215	215	215
Ukraine	500	600	475	600	375	375
Others	519	451	497	502	516	516
Subtotal	19,589	19,217	20,265	19,896	20,018	19,688
United States	2,499	2,743	2,757	2,424	2,828	2,828
World Total	22,088	21,960	23,022	22,320	22,846	22,516
Ending Stocks						
Argentina	55	49	67	62	42	42
Australia	134	60	105	67	126	117
Canada	805	446	1,054	681	791	871
Chile	25	61	45	26	45	46
China	127	139	135	147	122	122
European Union	795	901	894	849	758	680
Russia	485	203	229	287	177	177
Others	225	221	199	179	176	175
Subtotal	2,651	2,080	2,728	2,298	2,237	2,230
United States	797	527	359	780	860	860
World Total	3,448	2,607	3,087	3,078	3,097	3,090

Regional Oats Imports, Production, Consumption, and Stocks

Thousand Metric Tons

	2011/12	2012/13	2013/14	2014/15	Nov 2015/16	Dec 2015/16
TY Imports						
North America	1,875	1,475	1,985	1,855	1,710	1,710
South America	31	26	29	30	30	30
European Union - 28	3	4	3	4	5	5
Other Europe	110	84	94	64	100	100
Former Soviet Union - 12	7	0	1	0	0	0
Middle East	4	0	0	5	5	5
North Africa	9	7	12	15	10	10
Sub-Saharan Africa	11	11	19	50	25	25
East Asia	122	138	162	209	300	300
Oceania	0	0	0	0	0	0
Total	2,172	1,745	2,305	2,232	2,185	2,185
Production						
North America	3,937	3,806	4,934	4,088	4,740	4,820
South America	1,191	1,577	1,478	1,274	1,606	1,316
European Union - 28	7,927	7,909	8,380	7,845	7,719	7,621
Other Europe	373	365	348	369	372	372
Former Soviet Union - 12	6,549	5,285	6,062	6,579	6,031	6,031
Middle East	218	210	210	210	210	210
North Africa	163	166	166	166	166	166
Sub-Saharan Africa	57	60	59	55	55	55
East Asia	602	602	582	602	601	601
Oceania	1,291	1,139	1,283	1,123	1,336	1,336
Total	22,308	21,119	23,502	22,311	22,836	22,528
Domestic Consumption						
North America	4,045	4,530	4,602	4,275	4,668	4,668
South America	1,167	1,515	1,447	1,251	1,531	1,256
European Union - 28	7,800	7,700	8,075	7,675	7,675	7,675
Other Europe	478	474	429	433	467	467
Former Soviet Union - 12	6,180	5,531	6,032	6,481	6,131	6,131
Middle East	215	215	215	215	215	215
North Africa	172	175	174	182	176	176
Sub-Saharan Africa	53	72	95	105	80	80
East Asia	685	730	750	800	925	925
Oceania	1,129	943	978	911	936	936
Total	21,924	21,885	22,797	22,328	22,804	22,529
Ending Stocks						
North America	1,605	974	1,416	1,463	1,654	1,733
South America	93	128	129	100	104	105
European Union - 28	795	901	894	849	758	680
Other Europe	48	27	41	38	43	43
Former Soviet Union - 12	592	332	345	393	268	268
Middle East	17	12	7	7	7	7
North Africa	1	1	1	1	1	1
Sub-Saharan Africa	29	28	11	11	11	11
East Asia	134	144	138	149	125	125
Oceania	134	60	105	67	126	117
Total	3,448	2,607	3,087	3,078	3,097	3,090

NOTES: Regional definitions appear on last page of this circular. Imports are reported on a trade year basis. All other data are reported using local marketing years.

World Rye Trade
October/September Year, Thousand Metric Tons

	2011/12	2012/13	2013/14	2014/15	2015/16 Nov	2015/16 Dec
TY Exports						
Belarus	25	25	5	5	5	5
Canada	159	178	97	89	100	100
European Union	59	122	201	167	150	150
Russia	284	78	83	110	100	100
Ukraine	9	16	59	25	20	20
Others	4	0	0	0	0	0
Subtotal	540	419	445	396	375	375
United States	8	7	6	3	5	5
World Total	548	426	451	399	380	380
TY Imports						
European Union	302	68	96	96	50	50
Israel	11	34	33	25	25	25
Japan	46	27	37	22	25	25
Korea, South	11	12	8	4	10	10
Norway	11	21	16	15	15	15
Russia	0	25	5	5	5	5
Switzerland	2	9	6	5	5	5
Others	9	2	1	5	0	0
Subtotal	392	198	202	177	135	135
Unaccounted	-18	7	45	-40	45	45
United States	174	221	204	262	200	200
World Total	548	426	451	399	380	380

TY=Trade Year, see Endnotes.

World Rye Production, Consumption, and Stocks
Local Marketing Years, Thousand Metric Tons

	2011/12	2012/13	2013/14	2014/15	2015/16 Nov	2015/16 Dec
Production						
Argentina	45	40	52	97	56	56
Belarus	801	1,082	648	950	800	800
Canada	241	337	223	218	230	225
European Union	6,900	8,763	10,151	8,858	7,673	7,660
Russia	2,967	2,132	3,360	3,279	3,300	3,300
Turkey	366	370	350	350	350	350
Ukraine	579	676	638	475	375	375
Others	137	146	126	144	200	134
Subtotal	12,036	13,546	15,548	14,371	12,984	12,900
United States	154	166	194	183	292	292
World Total	12,190	13,712	15,742	14,554	13,276	13,192
Total Consumption						
Argentina	45	40	52	97	56	56
Belarus	750	1,000	650	950	800	800
Canada	101	127	107	134	123	123
European Union	7,400	8,700	9,650	8,900	7,800	7,800
Israel	11	34	33	25	25	25
Kazakhstan	30	50	40	65	50	50
Norway	27	26	28	27	27	27
Russia	2,850	2,000	3,100	3,250	3,200	3,200
Turkey	375	375	350	350	350	350
Ukraine	625	625	625	475	400	400
Others	161	139	127	105	178	112
Subtotal	12,346	13,146	14,767	14,375	13,039	12,973
United States	311	387	424	406	467	467
World Total	12,657	13,533	15,191	14,781	13,506	13,440
Ending Stocks						
Belarus	110	167	160	155	150	150
Canada	25	46	44	42	49	44
European Union	747	795	1,204	1,080	855	840
Kazakhstan	3	3	6	2	2	2
Russia	129	153	345	265	270	270
Turkey	24	18	18	23	23	23
Ukraine	132	166	128	106	61	61
Others	5	7	4	1	1	1
Subtotal	1,175	1,355	1,909	1,674	1,411	1,391
United States	11	10	7	15	50	50
World Total	1,186	1,365	1,916	1,689	1,461	1,441

Regional Rye Imports, Production, Consumption, and Stocks

Thousand Metric Tons

	2011/12	2012/13	2013/14	2014/15	Nov 2015/16	Dec 2015/16
TY Imports						
North America	174	221	204	262	200	200
South America	0	0	0	0	0	0
European Union - 28	302	68	96	96	50	50
Other Europe	14	32	23	20	20	20
Former Soviet Union - 12	5	25	5	5	5	5
Middle East	14	34	33	30	25	25
Sub-Saharan Africa	0	0	0	0	0	0
East Asia	57	39	45	26	35	35
Oceania	0	0	0	0	0	0
Total	566	419	406	439	335	335
Production						
North America	395	503	417	401	522	517
South America	49	47	59	105	130	64
European Union - 28	6,900	8,763	10,151	8,858	7,673	7,660
Other Europe	62	46	53	52	51	51
Former Soviet Union - 12	4,375	3,940	4,689	4,765	4,525	4,525
Middle East	366	370	350	350	350	350
Sub-Saharan Africa	3	3	3	3	3	3
East Asia	0	0	0	0	0	0
Oceania	40	40	20	20	22	22
Total	12,190	13,712	15,742	14,554	13,276	13,192
Domestic Consumption						
North America	412	514	531	540	590	590
South America	49	47	59	105	130	64
European Union - 28	7,400	8,700	9,650	8,900	7,800	7,800
Other Europe	76	78	77	72	71	71
Former Soviet Union - 12	4,255	3,675	4,415	4,740	4,450	4,450
Middle East	386	409	383	375	375	375
Sub-Saharan Africa	2	3	3	3	3	3
East Asia	66	37	48	29	35	35
Oceania	40	40	20	20	22	22
Total	12,686	13,503	15,186	14,784	13,476	13,410
Ending Stocks						
North America	36	56	51	57	99	94
South America	0	0	0	0	0	0
European Union - 28	747	795	1,204	1,080	855	840
Other Europe	0	0	0	0	0	0
Former Soviet Union - 12	374	489	639	528	483	483
Middle East	24	18	18	23	23	23
Sub-Saharan Africa	0	0	0	0	0	0
East Asia	5	7	4	1	1	1
Oceania	0	0	0	0	0	0
Total	1,186	1,365	1,916	1,689	1,461	1,441

NOTES: Regional definitions appear on last page of this circular. Imports are reported on a trade year basis. All other data are reported using local marketing years.



HISTORICAL DATA SERIES FOR SELECTED REGIONS AND COUNTRIES

CONTENTS

European Union: Grain Supply and Demand	36
China: Grain Supply and Demand	37
Other Europe: Grain Supply and Demand	38
Former Soviet Union: Grain Supply and Demand.....	39
Wheat Supply and Disappearance: Selected Exporters	43
Corn Supply and Disappearance: Selected Exporters.....	45
Barley Supply and Disappearance: Selected Exporters	47
Sorghum Supply and Disappearance: Selected Exporters	48
U.S. Grains: Supply and Distribution.....	49
Total Wheat and Coarse Grains: Supply and Demand	50
World Wheat and Coarse Grains: Supply and Demand	51
World Corn and Barley: Supply and Demand	52
World Rice: Supply and Demand	53

European Union: Grain Supply and Demand

Wheat and Coarse Grains Millions of Metric Tons/Hectares

	Area Harvested	Yield	Production	Imports	Exports	Feed Dom.	Domestic Consumption	Ending Stocks
Wheat								
2004/05	26.2	5.6	147.7	7.1	14.7	59.3	123.9	28.3
2005/06	26.0	5.1	132.9	6.8	15.7	63.0	128.2	24.1
2006/07	24.7	5.1	125.7	5.2	13.9	60.2	126.2	14.8
2007/08	24.9	4.9	120.8	6.8	12.4	52.4	117.2	12.8
2008/09	26.8	5.7	151.9	7.7	25.4	60.5	127.6	19.4
2009/10	26.0	5.4	139.7	5.4	22.3	57.5	125.6	16.6
2010/11	26.0	5.3	136.7	4.6	23.1	52.5	122.8	11.9
2011/12	25.8	5.3	138.2	7.4	16.7	57.5	127.2	13.5
2012/13	26.0	5.2	133.9	5.3	22.8	51.0	119.3	10.7
2013/14	25.9	5.6	144.6	4.0	32.0	49.0	117.3	9.9
2014/15	26.8	5.8	156.5	6.0	35.4	54.5	123.5	13.5
2015/16	26.7	5.9	157.7	6.0	32.5	57.0	125.8	18.9
Coarse Grains								
2004/05	33.9	5.0	169.1	3.0	4.8	118.9	155.2	25.6
2005/06	33.2	4.5	149.5	2.7	4.3	112.4	150.7	22.8
2006/07	32.4	4.3	140.0	8.1	4.5	112.9	150.6	15.7
2007/08	32.6	4.3	138.7	20.3	4.5	121.6	157.1	13.1
2008/09	34.0	4.8	164.9	3.1	5.7	116.1	154.2	21.3
2009/10	32.9	4.8	157.6	2.9	3.0	114.8	152.4	26.3
2010/11	30.2	4.7	142.9	8.5	6.2	116.9	154.6	16.9
2011/12	30.2	5.0	149.9	7.0	6.5	113.2	151.5	15.7
2012/13	31.4	4.7	145.9	11.8	7.4	113.7	153.1	13.1
2013/14	31.4	5.1	158.9	16.3	8.6	122.4	164.1	15.5
2014/15	30.8	5.5	170.6	9.1	14.0	121.5	163.3	18.0
2015/16	30.5	4.9	150.4	16.4	9.8	119.6	161.4	13.6
Wheat and Coarse Grains								
2004/05	60.1	5.3	316.8	10.0	19.5	178.2	279.1	54.0
2005/06	59.1	4.8	282.3	9.4	20.0	175.4	278.9	46.9
2006/07	57.0	4.7	265.7	13.2	18.5	173.1	276.8	30.5
2007/08	57.5	4.5	259.5	27.1	16.9	174.1	274.2	25.9
2008/09	60.9	5.2	316.9	10.8	31.1	176.6	281.8	40.7
2009/10	58.9	5.0	297.3	8.2	25.3	172.3	278.0	42.9
2010/11	56.2	5.0	279.5	13.1	29.3	169.4	277.5	28.8
2011/12	56.0	5.1	288.1	14.3	23.3	170.7	278.7	29.3
2012/13	57.3	4.9	279.9	17.1	30.1	164.7	272.3	23.8
2013/14	57.3	5.3	303.5	20.2	40.7	171.4	281.4	25.5
2014/15	57.5	5.7	327.2	15.1	49.4	176.0	286.8	31.5
2015/16	57.2	5.4	308.1	22.4	42.3	176.6	287.2	32.5

China: Grain Supply and Demand

Wheat and Coarse Grains Millions of Metric Tons/Hectares

	Area Harvested	Yield	Production	Imports	Exports	Feed Dom.	Domestic Consumption	Ending Stocks
Wheat								
2004/05	21.6	4.3	92.0	6.7	1.2	4.0	102.0	38.8
2005/06	22.8	4.3	97.4	1.1	1.4	3.5	101.5	34.5
2006/07	23.6	4.6	108.5	0.4	2.8	4.0	102.0	38.6
2007/08	23.7	4.6	109.3	0.0	2.8	8.0	106.0	39.1
2008/09	23.6	4.8	112.5	0.5	0.7	8.0	105.5	45.8
2009/10	24.3	4.7	115.1	1.4	0.9	10.0	107.0	54.4
2010/11	24.3	4.7	115.2	0.9	0.9	13.0	110.5	59.1
2011/12	24.3	4.8	117.4	2.9	1.0	24.0	122.5	55.9
2012/13	24.3	5.0	121.0	3.0	1.0	25.0	125.0	54.0
2013/14	24.1	5.1	121.9	6.8	0.9	16.0	116.5	65.3
2014/15	24.1	5.2	126.2	1.9	0.8	17.0	118.5	74.1
2015/16	24.2	5.4	130.0	2.0	1.0	15.0	118.0	87.1
Coarse Grains								
2004/05	28.0	4.9	138.3	2.1	7.6	100.3	141.1	37.6
2005/06	28.8	5.1	147.8	2.3	3.8	103.5	147.1	36.9
2006/07	31.1	5.1	159.0	1.2	5.5	105.0	153.5	38.0
2007/08	31.9	5.0	159.2	1.2	0.9	106.7	157.9	39.5
2008/09	32.2	5.4	172.4	1.7	0.2	109.1	161.2	52.2
2009/10	33.4	5.1	169.8	3.8	0.2	119.1	173.3	52.3
2010/11	34.6	5.3	183.8	2.7	0.2	128.8	188.4	50.1
2011/12	35.5	5.6	198.6	7.9	0.1	132.0	196.2	60.4
2012/13	37.1	5.7	212.2	5.6	0.1	146.1	209.7	68.4
2013/14	38.4	5.9	225.1	12.4	0.0	157.8	223.6	82.3
2014/15	39.1	5.7	222.1	25.7	0.0	158.5	228.6	101.5
2015/16	39.8	5.8	231.5	17.3	0.1	162.4	234.8	115.4
Wheat and Coarse Grains								
2004/05	49.6	4.6	230.2	8.8	8.8	104.3	243.1	76.4
2005/06	51.6	4.8	245.3	3.4	5.2	107.0	248.6	71.4
2006/07	54.7	4.9	267.4	1.5	8.2	109.0	255.5	76.6
2007/08	55.6	4.8	268.5	1.2	3.7	114.7	263.9	78.6
2008/09	55.8	5.1	284.9	2.1	0.9	117.1	266.7	98.0
2009/10	57.6	4.9	284.9	5.2	1.1	129.1	280.3	106.7
2010/11	58.9	5.1	299.0	3.6	1.1	141.8	298.9	109.2
2011/12	59.8	5.3	316.0	10.9	1.1	156.0	318.7	116.3
2012/13	61.3	5.4	333.2	8.6	1.1	171.1	334.7	122.3
2013/14	62.5	5.6	347.0	19.2	0.9	173.8	340.1	147.5
2014/15	63.2	5.5	348.4	27.6	0.8	175.5	347.1	175.6
2015/16	64.0	5.7	361.5	19.3	1.1	177.4	352.8	202.5

Other Europe: Grain Supply and Demand

Wheat and Coarse Grains Millions of Metric Tons/Hectares

	Area Harvested	Yield	Production	Imports	Exports	Feed Dom.	Domestic Consumpti	Ending Stocks
Wheat								
2004/05	1.1	4.3	4.6	1.4	0.3	0.9	5.2	1.3
2005/06	1.0	3.8	3.8	1.4	0.2	0.9	5.1	1.1
2006/07	1.0	3.6	3.5	1.5	0.3	0.7	4.6	1.2
2007/08	1.0	3.8	3.7	1.9	0.5	1.0	4.8	1.5
2008/09	0.9	4.4	4.0	1.7	0.4	1.2	5.1	1.7
2009/10	1.0	3.9	3.8	1.7	0.5	1.0	4.9	1.7
2010/11	0.9	3.7	3.2	1.7	0.6	0.8	4.7	1.3
2011/12	0.9	4.2	3.6	1.9	0.5	1.0	4.9	1.5
2012/13	0.9	4.0	3.4	1.7	0.7	1.0	4.7	1.1
2013/14	0.9	4.4	4.1	1.9	1.3	1.1	4.8	1.1
2014/15	0.9	4.2	3.9	1.7	0.7	1.1	4.8	1.2
2015/16	1.0	4.3	4.1	1.9	1.1	1.1	4.9	1.3
Coarse Grains								
2004/05	2.1	5.0	10.4	0.5	0.6	8.4	9.5	1.5
2005/06	2.1	4.8	10.1	0.6	1.3	8.5	9.7	1.3
2006/07	2.0	4.9	9.8	0.8	0.9	8.5	9.6	1.3
2007/08	2.0	3.4	6.9	0.9	0.1	6.8	7.9	1.1
2008/09	2.1	4.6	9.7	0.6	1.5	7.6	8.7	1.1
2009/10	2.0	4.9	9.7	0.7	1.4	7.5	8.7	1.4
2010/11	2.0	5.0	10.0	0.7	2.0	7.3	8.7	1.5
2011/12	2.1	4.6	9.5	0.8	2.4	7.0	8.4	1.0
2012/13	2.1	3.2	6.6	0.7	0.6	5.9	7.1	0.6
2013/14	2.0	4.4	8.8	0.9	1.8	6.3	7.7	0.8
2014/15	1.9	5.5	10.7	0.8	3.0	6.5	8.0	1.3
2015/16	1.9	4.4	8.4	0.9	1.7	6.5	8.0	0.8
Wheat and Coarse Grains								
2004/05	3.2	4.8	15.1	1.9	0.9	9.3	14.8	2.8
2005/06	3.1	4.5	13.9	2.0	1.4	9.4	14.8	2.4
2006/07	3.0	4.5	13.3	2.3	1.2	9.2	14.2	2.5
2007/08	3.0	3.5	10.6	2.7	0.6	7.8	12.6	2.6
2008/09	3.0	4.6	13.7	2.3	1.9	8.8	13.8	2.8
2009/10	3.0	4.5	13.5	2.4	1.9	8.5	13.7	3.2
2010/11	2.9	4.6	13.2	2.4	2.6	8.1	13.4	2.7
2011/12	2.9	4.5	13.1	2.7	2.8	8.1	13.2	2.5
2012/13	2.9	3.4	10.0	2.4	1.3	7.0	11.8	1.8
2013/14	2.9	4.4	12.9	2.8	3.1	7.4	12.5	1.9
2014/15	2.9	5.1	14.6	2.6	3.7	7.6	12.8	2.5
2015/16	2.9	4.4	12.6	2.8	2.8	7.7	12.9	2.1

Former Soviet Union: Grain Supply and Demand
Wheat and Coarse Grains Millions of Metric Tons/Hectares

	Area Harvested	Yield	Production	Imports	Exports	Feed Dom.	Domestic Consumption	Ending Stocks
Wheat								
2009/10	52.6	2.2	114.0	5.4	37.3	26.5	78.3	25.8
2010/11	45.8	1.8	81.0	5.5	13.9	24.4	75.7	22.7
2011/12	49.7	2.3	115.0	8.0	39.7	28.3	80.0	26.0
2012/13	44.0	1.8	77.8	7.2	25.4	21.5	71.7	13.9
2013/14	47.7	2.2	103.9	7.4	37.1	22.7	72.8	15.2
2014/15	46.7	2.4	112.7	7.7	40.2	24.5	75.7	19.7
2015/16	48.7	2.4	117.0	7.3	46.2	25.3	77.6	20.3
Coarse Grains								
2009/10	27.2	2.5	67.6	0.4	15.0	39.0	55.0	7.4
2010/11	21.9	2.2	47.5	1.2	8.8	28.4	41.8	5.5
2011/12	27.0	2.9	78.6	1.0	24.6	38.6	54.4	6.2
2012/13	27.5	2.5	68.2	0.7	19.9	35.6	50.2	5.0
2013/14	29.4	3.0	87.6	0.8	30.9	40.0	55.6	7.0
2014/15	30.3	3.0	91.7	0.8	34.0	41.8	57.8	7.7
2015/16	28.8	2.9	83.2	0.8	28.2	41.1	57.3	6.3

Former Soviet Union: Grain Supply and Demand (Wheat)

Millions of Tons/Hectares

Country Mktg Year	Area Harvested	Yield	Production	MY Imports	MY Exports	Feed and Residual	Total Consumption	Ending Stocks
Former Soviet Union - 12								
Kazakhstan								
2012/13	12.4	0.8	9.8	0.0	6.3	2.0	6.8	2.9
2013/14	13.0	1.1	13.9	0.0	8.1	2.0	6.8	2.0
2014/15	11.9	1.1	13.0	0.6	5.5	2.0	6.8	3.2
2015/16	11.5	1.2	14.0	0.1	6.5	2.1	6.9	3.9
Russia								
2012/13	21.3	1.8	37.7	1.2	11.3	11.9	33.6	5.0
2013/14	23.4	2.2	52.1	0.8	18.6	12.5	34.1	5.2
2014/15	23.6	2.5	59.1	0.3	22.8	13.0	35.5	6.3
2015/16	25.5	2.4	60.5	0.4	23.5	13.5	36.5	7.1
Ukraine								
2012/13	5.6	2.8	15.8	0.0	7.2	3.1	11.4	2.6
2013/14	6.6	3.4	22.3	0.1	9.8	3.4	11.5	3.7
2014/15	6.3	3.9	24.8	0.0	11.3	4.0	12.0	5.2
2015/16	7.0	3.9	27.0	0.1	15.5	4.5	12.5	4.2
Uzbekistan								
2012/13	1.4	4.8	6.7	1.9	0.4	1.7	8.0	1.6
2013/14	1.4	4.9	6.8	2.2	0.3	1.9	8.4	1.9
2014/15	1.4	5.1	7.2	2.2	0.2	2.2	8.9	2.2
2015/16	1.4	5.1	7.2	2.4	0.2	2.2	9.3	2.3
Other Former Soviet Union - 12								
2012/13	3.2	2.4	7.8	4.1	0.3	2.8	12.0	1.9
2013/14	3.4	2.6	8.8	4.3	0.4	2.9	12.0	2.5
2014/15	3.4	2.6	8.8	4.5	0.4	3.3	12.5	2.8
2015/16	3.3	2.5	8.3	4.5	0.5	3.0	12.4	2.7
Total Former Soviet Union - 12								
2012/13	44.0	1.8	77.8	7.2	25.4	21.5	71.7	13.9
2013/14	47.7	2.2	103.9	7.4	37.1	22.7	72.8	15.2
2014/15	46.7	2.4	112.7	7.7	40.2	24.5	75.7	19.7
2015/16	48.7	2.4	117.0	7.3	46.2	25.3	77.6	20.3

Former Soviet Union: Grain Supply and Demand (Barley)

Millions of Tons/Hectares

Country Mktg Year	Area Harvested	Yield	Production	MY Imports	MY Exports	Feed and Residual	Total Consumption	Ending Stocks
Former Soviet Union - 12								
Kazakhstan								
2012/13	1.6	0.9	1.5	0.0	0.2	1.2	1.4	0.2
2013/14	1.8	1.4	2.5	0.0	0.5	1.7	2.0	0.2
2014/15	1.9	1.3	2.4	0.0	0.5	1.6	1.9	0.2
2015/16	2.0	1.3	2.6	0.0	0.5	1.8	2.1	0.2
Russia								
2012/13	7.6	1.8	14.0	0.3	2.2	7.7	12.1	0.7
2013/14	8.0	1.9	15.4	0.2	2.7	8.3	12.7	0.9
2014/15	8.8	2.3	20.0	0.1	5.3	9.2	14.1	1.6
2015/16	8.2	2.0	16.7	0.1	3.7	8.7	13.5	1.2
Ukraine								
2012/13	3.3	2.1	6.9	0.0	2.1	3.5	5.1	0.9
2013/14	3.2	2.3	7.6	0.0	2.5	3.5	5.0	1.0
2014/15	3.2	3.0	9.5	0.0	4.5	3.0	4.5	1.5
2015/16	2.9	3.0	8.7	0.0	4.5	3.0	4.5	1.2
Uzbekistan								
2012/13	0.1	3.2	0.2	0.0	0.0	0.2	0.3	0.0
2013/14	0.1	3.2	0.2	0.0	0.0	0.2	0.3	0.0
2014/15	0.1	3.2	0.2	0.1	0.0	0.2	0.3	0.0
2015/16	0.1	3.2	0.2	0.1	0.0	0.3	0.3	0.0
Other Former Soviet Union - 12								
2012/13	1.2	2.8	3.3	0.1	0.0	2.7	3.5	0.4
2013/14	1.3	2.5	3.4	0.1	0.0	2.7	3.5	0.4
2014/15	1.4	2.7	3.7	0.2	0.1	2.9	3.7	0.5
2015/16	1.4	2.6	3.6	0.2	0.1	3.1	3.9	0.3
Total Former Soviet Union - 12								
2012/13	13.8	1.9	26.0	0.4	4.6	15.2	22.3	2.2
2013/14	14.5	2.0	29.2	0.3	5.7	16.4	23.5	2.6
2014/15	15.3	2.3	35.8	0.4	10.4	16.9	24.5	3.8
2015/16	14.6	2.2	31.9	0.3	8.8	16.9	24.4	2.9

Former Soviet Union: Grain Supply and Demand (Corn)

Millions of Tons/Hectares

Country Mktg Year	Area Harvested	Yield	Production	MY Imports	MY Exports	Feed and Residual	Total Consumption	Ending Stocks
Former Soviet Union - 12								
Kazakhstan								
2012/13	0.1	5.0	0.5	0.0	0.0	0.4	0.5	0.0
2013/14	0.1	5.3	0.6	0.0	0.0	0.5	0.6	0.0
2014/15	0.1	5.3	0.7	0.0	0.0	0.5	0.6	0.1
2015/16	0.1	5.0	0.5	0.0	0.0	0.5	0.6	0.0
Russia								
2012/13	1.9	4.2	8.2	0.1	1.9	5.6	6.4	0.3
2013/14	2.3	5.0	11.6	0.1	4.2	6.6	7.5	0.3
2014/15	2.6	4.4	11.3	0.1	3.2	7.2	8.1	0.4
2015/16	2.7	5.0	13.5	0.1	4.0	8.3	9.3	0.6
Ukraine								
2012/13	4.4	4.8	20.9	0.0	12.7	6.8	8.1	1.2
2013/14	4.8	6.4	30.9	0.1	20.0	8.3	9.7	2.5
2014/15	4.6	6.2	28.5	0.1	19.8	8.0	9.4	1.8
2015/16	4.0	5.8	23.0	0.1	15.0	7.0	8.4	1.4
Uzbekistan								
2012/13	0.0	3.4	0.1	0.0	0.0	0.1	0.1	0.0
2013/14	0.0	3.4	0.1	0.0	0.0	0.1	0.2	0.0
2014/15	0.0	3.4	0.1	0.0	0.0	0.1	0.2	0.0
2015/16	0.0	3.4	0.1	0.0	0.0	0.1	0.1	0.0
Other Former Soviet Union - 12								
2012/13	1.0	2.7	2.6	0.2	0.4	2.6	3.0	0.5
2013/14	1.0	3.8	3.7	0.3	0.6	2.9	3.2	0.6
2014/15	0.9	3.7	3.2	0.3	0.3	2.9	3.2	0.7
2015/16	0.9	3.1	2.8	0.4	0.1	2.8	3.2	0.6
Total Former Soviet Union - 12								
2012/13	7.4	4.4	32.3	0.3	15.0	15.5	18.1	2.0
2013/14	8.3	5.7	46.9	0.5	24.8	18.4	21.1	3.4
2014/15	8.2	5.3	43.7	0.5	23.3	18.7	21.4	2.9
2015/16	7.7	5.2	39.9	0.5	19.1	18.7	21.6	2.6

Wheat Supply and Disappearance: Selected Exporters
Million Metric Tons/Hectares

Country Mktg Year	Area Harvested	Yield	Production	MY Imports	MY Exports	Feed and Residual	Total Consumption	Ending Stocks
Wheat Competitors								
Argentina								
2011/12	5.2	3.0	15.5	0.0	12.9	0.1	6.0	0.7
2012/13	3.6	2.6	9.3	0.0	3.6	0.3	6.2	0.3
2013/14	3.5	3.0	10.5	0.0	2.3	0.1	6.1	2.5
2014/15	4.2	3.0	12.5	0.0	5.5	0.3	6.4	3.2
2015/16	3.5	3.0	10.5	0.0	6.0	0.1	6.2	1.6
Australia								
2011/12	13.9	2.2	29.9	0.1	24.7	3.2	6.5	7.1
2012/13	13.0	1.8	22.9	0.1	18.6	3.4	6.7	4.7
2013/14	12.6	2.0	25.3	0.2	18.6	3.6	7.0	4.6
2014/15	13.8	1.7	23.7	0.2	16.6	4.1	7.5	4.3
2015/16	13.8	1.9	26.0	0.2	18.0	4.0	7.4	5.0
Canada								
2011/12	8.6	3.0	25.3	0.5	17.4	4.7	9.9	5.9
2012/13	9.5	2.9	27.2	0.5	19.0	4.3	9.5	5.1
2013/14	10.4	3.6	37.5	0.4	23.3	4.2	9.4	10.4
2014/15	9.5	3.1	29.4	0.5	24.1	3.8	9.1	7.1
2015/16	9.6	2.9	27.6	0.5	20.5	3.8	9.0	5.7
European Union								
2011/12	25.8	5.3	138.2	7.4	16.7	57.5	127.2	13.5
2012/13	26.0	5.2	133.9	5.3	22.8	51.0	119.3	10.7
2013/14	25.9	5.6	144.6	4.0	32.0	49.0	117.3	9.9
2014/15	26.8	5.8	156.5	6.0	35.4	54.5	123.5	13.5
2015/16	26.7	5.9	157.7	6.0	32.5	57.0	125.8	18.9
Kazakhstan								
2011/12	13.7	1.7	22.7	0.0	11.8	2.6	7.6	6.2
2012/13	12.4	0.8	9.8	0.0	6.3	2.0	6.8	2.9
2013/14	13.0	1.1	13.9	0.0	8.1	2.0	6.8	2.0
2014/15	11.9	1.1	13.0	0.6	5.5	2.0	6.8	3.2
2015/16	11.5	1.2	14.0	0.1	6.5	2.1	6.9	3.9
Russia								
2011/12	24.8	2.3	56.2	0.6	21.6	15.5	38.0	10.9
2012/13	21.3	1.8	37.7	1.2	11.3	11.9	33.6	5.0
2013/14	23.4	2.2	52.1	0.8	18.6	12.5	34.1	5.2
2014/15	23.6	2.5	59.1	0.3	22.8	13.0	35.5	6.3
2015/16	25.5	2.4	60.5	0.4	23.5	13.5	36.5	7.1

Wheat Supply and Disappearance: Selected Exporters (Continued)

Million Metric Tons/Hectares

Country Mktg Year	Area Harvested	Yield	Production	MY Imports	MY Exports	Feed and Residual	Total Consumption	Ending Stocks
Ukraine								
2011/12	6.7	3.4	22.3	0.1	5.4	6.1	15.0	5.4
2012/13	5.6	2.8	15.8	0.0	7.2	3.1	11.4	2.6
2013/14	6.6	3.4	22.3	0.1	9.8	3.4	11.5	3.7
2014/15	6.3	3.9	24.8	0.0	11.3	4.0	12.0	5.2
2015/16	7.0	3.9	27.0	0.1	15.5	4.5	12.5	4.2
Total Wheat Competitors								
2011/12	98.6	3.1	310.2	8.6	110.6	89.7	210.1	49.7
2012/13	91.4	2.8	256.6	7.1	88.7	76.0	193.5	31.3
2013/14	95.4	3.2	306.2	5.5	112.6	74.8	192.1	38.3
2014/15	96.1	3.3	318.9	7.6	121.2	81.7	200.8	42.8
2015/16	97.6	3.3	323.3	7.1	122.5	85.0	204.2	46.5

Corn Supply and Disappearance: Selected Exporters
Million Metric Tons/Hectares

Country Mktg Year	Area Harvested	Yield	Production	MY Imports	MY Exports	Feed and Residual	Total Consumption	Ending Stocks
Argentina								
2007/08	3.4	6.5	22.0	0.0	14.8	4.9	6.8	2.1
2008/09	2.5	6.2	15.5	0.0	10.3	4.5	6.4	0.9
2009/10	3.0	8.3	25.0	0.0	16.5	5.0	6.9	2.5
2010/11	3.8	6.7	25.2	0.0	16.3	5.3	7.3	4.0
2011/12	3.6	5.8	21.0	0.0	17.1	4.8	7.0	0.9
2012/13	4.0	6.8	27.0	0.0	18.7	5.3	7.9	1.3
2013/14	3.4	7.6	26.0	0.0	17.1	5.8	8.8	1.4
2014/15	3.2	8.3	26.5	0.0	17.0	6.1	9.4	1.5
2015/16	3.2	8.0	25.6	0.0	16.0	6.5	10.0	1.1
Brazil								
2007/08	14.7	4.0	58.6	0.7	7.8	37.5	44.0	10.6
2008/09	14.1	3.6	51.0	1.1	7.1	38.5	45.5	10.1
2009/10	12.9	4.3	56.1	0.4	11.6	41.5	48.5	6.5
2010/11	13.8	4.2	57.4	0.8	8.4	43.0	50.0	6.3
2011/12	15.2	4.8	73.0	0.8	24.3	44.0	51.5	4.2
2012/13	15.8	5.2	81.5	0.9	24.9	44.5	52.5	9.2
2013/14	15.8	5.1	80.0	0.8	21.0	46.0	55.0	14.0
2014/15	15.8	5.4	85.0	0.6	32.0	48.0	57.0	10.6
2015/16	15.8	5.2	81.5	0.6	25.0	50.0	59.0	8.7
China								
2007/08	29.5	5.2	152.3	0.0	0.5	106.0	150.0	38.4
2008/09	29.9	5.6	165.9	0.0	0.2	108.0	153.0	51.2
2009/10	31.2	5.3	164.0	1.3	0.2	118.0	165.0	51.3
2010/11	32.5	5.5	177.2	1.0	0.1	128.0	180.0	49.4
2011/12	33.5	5.7	192.8	5.2	0.1	131.0	188.0	59.3
2012/13	35.0	5.9	205.6	2.7	0.1	144.0	200.0	67.6
2013/14	36.3	6.0	218.5	3.3	0.0	150.0	208.0	81.3
2014/15	37.1	5.8	215.6	5.5	0.0	140.0	202.0	100.5
2015/16	37.9	5.9	225.0	3.0	0.1	150.0	214.0	114.4
South Africa								
2007/08	3.3	4.0	13.2	0.0	2.2	4.8	10.1	1.4
2008/09	2.9	4.3	12.6	0.0	1.7	4.7	10.3	2.0
2009/10	3.3	4.1	13.4	0.0	2.1	4.9	10.6	2.8
2010/11	2.9	3.8	10.9	0.4	2.4	5.0	10.7	1.0
2011/12	3.1	4.1	12.8	0.0	1.8	5.0	10.7	1.3
2012/13	3.2	3.8	12.4	0.1	2.1	5.1	11.0	0.7

Corn Supply and Disappearance: Selected Exporters (Continued)

Million Metric Tons/Hectares

Country Mktg Year	Area Harvested	Yield	Production	MY Imports	MY Exports	Feed and Residual	Total Consumption	Ending Stocks
2013/14	3.1	4.9	14.9	0.1	2.0	5.5	11.5	2.2
2014/15	3.0	3.5	10.8	0.8	0.7	5.5	11.2	1.9
2015/16	3.0	4.0	12.0	0.2	1.0	5.5	11.4	1.7
Total Corn Competitors								
2007/08	50.9	4.8	246.1	0.8	25.3	153.2	210.9	52.5
2008/09	49.4	5.0	245.0	1.2	19.3	155.7	215.2	64.2
2009/10	50.4	5.1	258.5	1.7	30.3	169.4	231.0	63.0
2010/11	52.9	5.1	270.8	2.2	27.3	181.3	248.0	60.7
2011/12	55.5	5.4	299.5	6.0	43.4	184.8	257.2	65.7
2012/13	58.1	5.6	326.5	3.7	45.8	198.9	271.4	78.7
2013/14	58.6	5.8	339.4	4.1	40.0	207.3	283.3	98.9
2014/15	59.1	5.7	337.9	6.9	49.7	199.6	279.6	114.4
2015/16	59.9	5.7	344.1	3.8	42.1	212.0	294.4	125.9

Barley Supply and Disappearance: Selected Exporters
Million Metric Tons/Hectares

Country Mktg Year	Area Harvested	Yield	Production	MY Imports	MY Exports	Feed and Residual	Total Consumption	Ending Stocks
Australia								
2007/08	4.9	1.5	7.2	0.0	3.4	2.1	3.1	1.7
2008/09	5.0	1.6	8.0	0.0	3.2	2.9	4.0	2.4
2009/10	4.4	1.8	7.9	0.0	3.9	3.3	4.5	1.9
2010/11	3.7	2.2	8.0	0.0	4.7	3.0	4.2	1.0
2011/12	3.7	2.2	8.2	0.0	5.4	2.1	3.3	0.5
2012/13	3.6	2.1	7.5	0.0	4.5	1.8	3.0	0.5
2013/14	3.8	2.4	9.2	0.0	6.2	1.5	2.8	0.7
2014/15	3.8	2.1	8.0	0.0	5.6	1.3	2.6	0.5
2015/16	4.0	2.2	8.7	0.0	6.0	1.3	2.6	0.6
Canada								
2007/08	4.0	2.8	10.9	0.1	3.0	6.4	7.8	1.6
2008/09	3.5	3.4	11.8	0.0	1.5	7.6	8.9	3.0
2009/10	2.9	3.3	9.5	0.0	1.3	7.5	8.7	2.5
2010/11	2.4	3.2	7.6	0.0	1.2	6.3	7.5	1.5
2011/12	2.4	3.3	7.9	0.0	1.3	5.7	6.9	1.2
2012/13	2.8	2.9	8.0	0.0	1.4	5.7	6.8	1.0
2013/14	2.7	3.9	10.2	0.0	1.6	6.5	7.7	2.0
2014/15	2.1	3.3	7.1	0.1	1.5	5.2	6.5	1.2
2015/16	2.4	3.5	8.2	0.1	1.5	5.2	6.5	1.5
European Union								
2007/08	13.9	4.2	57.8	0.3	3.8	38.9	54.5	5.7
2008/09	14.6	4.5	65.8	0.3	3.6	41.7	57.3	11.0
2009/10	14.0	4.5	62.4	0.1	1.1	41.7	56.8	15.6
2010/11	12.5	4.3	53.7	0.2	4.9	41.3	56.6	7.9
2011/12	11.9	4.3	51.9	0.5	3.0	35.8	51.2	6.1
2012/13	12.5	4.4	54.9	0.1	4.9	35.5	51.0	5.1
2013/14	12.4	4.8	59.7	0.0	5.7	38.0	53.4	5.6
2014/15	12.4	4.9	60.5	0.1	9.5	35.5	51.0	5.6
2015/16	12.3	4.9	60.7	0.3	8.5	37.5	53.1	5.0

Sorghum Supply and Disappearance: Selected Exporters
Million Metric Tons/Hectares

Country Mktg Year	Area Harvested	Yield	Production	MY Imports	MY Exports	Feed and Residual	Total Consumption	Ending Stocks
Argentina								
2007/08	0.6	4.7	2.9	0.0	1.2	1.0	1.2	0.7
2008/09	0.5	3.7	1.7	0.0	1.1	1.0	1.1	0.2
2009/10	0.8	4.8	3.6	0.0	1.8	1.7	1.9	0.2
2010/11	1.0	4.4	4.4	0.0	1.7	1.7	1.9	0.9
2011/12	1.0	4.2	4.2	0.0	3.1	1.7	1.9	0.2
2012/13	1.1	4.5	4.7	0.0	1.8	2.0	2.3	0.8
2013/14	1.0	4.4	4.4	0.0	1.3	2.3	2.7	1.2
2014/15	0.8	4.5	3.5	0.0	1.1	2.4	2.8	0.8
2015/16	0.9	4.5	3.9	0.0	1.1	2.5	2.9	0.7
Australia								
2007/08	0.9	4.0	3.8	0.0	0.8	2.2	2.2	0.8
2008/09	0.8	3.5	2.7	0.0	1.0	1.8	1.8	0.7
2009/10	0.5	3.0	1.5	0.0	0.3	1.2	1.2	0.7
2010/11	0.6	3.1	1.9	0.0	0.9	1.4	1.4	0.4
2011/12	0.7	3.4	2.2	0.0	1.3	1.1	1.1	0.2
2012/13	0.6	3.4	2.2	0.0	1.2	1.1	1.1	0.2
2013/14	0.5	2.4	1.3	0.0	0.4	0.9	0.9	0.2
2014/15	0.7	3.2	2.1	0.0	1.5	0.6	0.6	0.2
2015/16	0.7	3.1	2.2	0.0	1.0	1.2	1.2	0.2

U.S. Grains Supply and Distribution: Wheat, Corn, Sorghum, Barley, Oats, Rye, and Rice

Thousand Metric Tons/Hectares

	Area Harvested	Yield	Rough Production	Production	Imports	TY Imports	Exports	TY Exports	Feed Dom. Consumption	Domestic Consumption	Ending Stocks
Wheat											
2013/14	18,345	3	nr	58,105	4,710	4,785	32,001	31,518	6,196	34,287	16,065
2014/15	18,771	3	nr	55,147	4,068	3,987	23,249	22,752	3,254	31,530	20,501
2015/16	19,058	3	nr	55,840	3,402	3,350	21,772	22,000	4,899	33,177	24,794
Corn											
2013/14	35,390	10	nr	351,272	909	727	48,783	50,684	128,023	292,965	31,292
2014/15	33,644	11	nr	361,091	804	809	47,359	46,773	135,018	301,851	43,977
2015/16	32,644	11	nr	346,815	762	750	44,452	44,500	134,626	301,766	45,336
Sorghum											
2013/14	2,665	4	nr	9,966	2	3	5,362	5,717	2,351	4,127	864
2014/15	2,590	4	nr	10,988	10	27	8,965	9,249	2,043	2,429	468
2015/16	3,094	5	nr	15,083	45	30	8,255	7,600	3,302	5,842	1,499
Barley											
2013/14	1,230	4	nr	4,719	408	522	311	336	1,440	4,775	1,791
2014/15	1,011	4	nr	3,953	513	430	312	292	938	4,234	1,711
2015/16	1,258	4	nr	4,666	370	450	218	300	1,089	4,420	2,109
Oats											
2013/14	408	2	nr	938	1,674	1,866	23	29	1,694	2,757	359
2014/15	419	2	nr	1,019	1,852	1,759	26	23	1,307	2,424	780
2015/16	516	3	nr	1,300	1,637	1,600	29	30	1,710	2,828	860
Rye											
2013/14	113	2	nr	194	234	204	7	6	184	424	7
2014/15	104	2	nr	183	237	262	6	3	164	406	15
2015/16	146	2	nr	292	216	200	6	5	221	467	50
Rice, Milled											
2013/14	999	9	8,615	6,117	734	755	3,005	2,998	nr	3,977	1,025
2014/15	1,181	8	10,026	7,068	783	770	3,207	3,450	nr	4,117	1,552
2015/16	1,040	8	8,653	6,057	778	800	3,112	3,250	nr	4,043	1,232

Notes: Wheat Trade Year (TY) statistics are on July/June years. Barley, corn, sorghum, rye and oats Trade Year (TY) statistics are on Oct/Sept years. Rice Trade Year (TY) statistics are for the subsequent calendar year; 'Imports' and 'Exports' columns contain data on the local marketing year: wheat, barley, oats and rye are June/May; corn and sorghum are Sept/Aug; rice is Aug/July.

Total Wheat and Coarse Grains: Supply and Demand

Millions of Metric Tons/Hectares

	Area Harvested	Yield	Production	TY Exports	Feed Dom.	Domestic Consumption	Ending Stocks
Wheat and Coarse Grains							
1986/87	565.2	2.4	1,347.9	174.7	645.9	1,299.7	469.1
1987/88	544.3	2.4	1,285.9	202.2	656.6	1,329.8	422.8
1988/89	541.9	2.2	1,218.1	203.3	619.5	1,301.8	339.1
1989/90	548.2	2.4	1,327.5	208.9	644.5	1,346.3	320.3
1990/91	545.7	2.6	1,417.6	190.1	669.8	1,369.7	368.3
1991/92	543.3	2.5	1,355.7	207.5	653.5	1,366.1	357.9
1992/93	545.9	2.6	1,431.7	205.2	664.1	1,388.3	398.5
1993/94	536.1	2.5	1,356.6	188.2	657.1	1,389.1	366.0
1994/95	534.1	2.6	1,392.8	200.1	670.5	1,395.6	363.2
1995/96	527.2	2.5	1,338.7	187.5	641.8	1,381.6	320.3
1996/97	545.7	2.7	1,490.2	198.3	674.6	1,441.7	368.7
1997/98	535.2	2.8	1,490.8	190.4	685.7	1,443.4	416.1
1998/99	520.2	2.8	1,481.6	198.7	685.4	1,448.7	449.0
1999/00	506.2	2.9	1,465.8	214.0	690.0	1,470.2	444.1
2000/01	509.3	2.8	1,446.9	204.9	700.4	1,472.3	418.7
2001/02	511.7	2.9	1,480.2	208.3	713.7	1,495.8	403.1
2002/03	504.7	2.9	1,445.1	209.2	711.7	1,506.6	341.6
2003/04	511.2	2.9	1,472.9	205.8	718.0	1,535.6	278.8
2004/05	514.8	3.2	1,642.8	214.4	756.0	1,586.0	335.6
2005/06	517.4	3.1	1,599.9	222.5	757.4	1,617.2	318.3
2006/07	519.1	3.1	1,584.8	229.8	748.9	1,630.2	272.9
2007/08	534.6	3.2	1,692.9	244.7	763.7	1,675.9	290.0
2008/09	539.4	3.3	1,791.7	253.6	773.6	1,722.3	359.3
2009/10	533.6	3.4	1,803.8	254.1	781.6	1,767.9	395.3
2010/11	523.3	3.3	1,748.2	250.1	772.9	1,783.7	359.8
2011/12	537.9	3.4	1,852.9	287.1	806.7	1,853.3	359.4
2012/13	532.4	3.4	1,796.1	279.4	807.5	1,814.7	340.8
2013/14	541.7	3.7	1,996.3	327.0	859.9	1,932.4	404.6
2014/15	544.9	3.7	2,022.3	334.4	880.7	1,971.6	455.3
2015/16	546.3	3.7	2,003.5	328.4	898.7	1,982.0	476.8

Notes: Wheat and coarse grains trade data are on July/June years through 1975/76. From 1976/77 to the present, coarse grains data are on an Oct/Sept trade year.

World Wheat and Coarse Grains: Supply and Demand

Millions of Metric Tons/Hectares

	Area Harvested	Yield	Production	TY Exports	Feed Dom.	Domestic Consumpti	Ending Stocks
Wheat							
1993/94	221.1	2.5	558.6	101.7	111.0	552.5	183.3
1994/95	213.4	2.5	523.1	101.5	103.0	541.7	164.7
1995/96	216.7	2.5	537.5	99.2	96.9	545.6	156.6
1996/97	227.1	2.6	581.3	104.0	101.4	572.6	165.3
1997/98	226.4	2.7	610.2	104.5	106.2	576.5	199.0
1998/99	219.2	2.7	590.5	102.0	109.4	579.0	210.5
1999/00	212.7	2.8	587.5	111.9	104.6	587.6	210.3
2000/01	215.6	2.7	583.3	102.1	111.2	587.1	206.5
2001/02	214.5	2.7	583.9	107.9	112.0	586.7	203.7
2002/03	213.9	2.7	569.7	106.5	116.1	604.1	169.3
2003/04	208.0	2.7	555.3	103.5	101.7	589.0	135.6
2004/05	215.8	2.9	626.8	113.2	110.5	606.2	156.2
2005/06	217.5	2.8	618.8	114.1	117.6	621.8	153.2
2006/07	212.3	2.8	596.7	115.3	113.0	616.5	133.4
2007/08	217.1	2.8	612.7	116.0	104.7	617.5	128.6
2008/09	224.1	3.1	683.6	143.2	124.3	643.3	169.0
2009/10	225.6	3.0	687.0	135.3	122.2	653.0	203.0
2010/11	216.8	3.0	649.9	134.1	116.8	654.0	199.0
2011/12	220.8	3.2	696.2	153.8	148.3	697.5	197.6
2012/13	215.8	3.1	658.7	147.2	138.3	679.2	177.1
2013/14	219.9	3.3	715.3	162.4	126.8	698.6	193.8
2014/15	222.4	3.3	725.3	161.3	132.6	707.0	212.1
2015/16	224.8	3.3	734.9	162.3	138.3	717.1	229.9
Coarse Grains							
1993/94	315.0	2.5	798.0	86.5	546.1	836.6	182.7
1994/95	320.8	2.7	869.7	98.6	567.6	853.9	198.5
1995/96	310.5	2.6	801.2	88.3	544.9	836.0	163.7
1996/97	318.6	2.9	908.9	94.3	573.3	869.1	203.5
1997/98	308.8	2.9	880.6	85.8	579.5	866.9	217.1
1998/99	301.0	3.0	891.1	96.7	575.9	869.7	238.6
1999/00	293.6	3.0	878.4	102.1	585.4	882.6	233.8
2000/01	293.7	2.9	863.6	102.8	589.3	885.2	212.3
2001/02	297.2	3.0	896.3	100.4	601.6	909.1	199.5
2002/03	290.9	3.0	875.4	102.7	595.6	902.6	172.3
2003/04	303.2	3.0	917.5	102.3	616.3	946.7	143.1
2004/05	299.0	3.4	1,016.0	101.2	645.5	979.8	179.4
2005/06	299.9	3.3	981.1	108.4	639.8	995.4	165.1
2006/07	306.8	3.2	988.1	114.5	635.9	1,013.7	139.5
2007/08	317.5	3.4	1,080.2	128.7	659.0	1,058.4	161.3
2008/09	315.4	3.5	1,108.0	110.4	649.3	1,079.1	190.3
2009/10	308.0	3.6	1,116.8	118.8	659.4	1,114.9	192.2
2010/11	306.5	3.6	1,098.3	116.0	656.1	1,129.7	160.8
2011/12	317.2	3.6	1,156.7	133.4	658.4	1,155.8	161.8
2012/13	316.7	3.6	1,137.3	132.2	669.3	1,135.4	163.7
2013/14	321.8	4.0	1,281.0	164.6	733.2	1,233.9	210.8
2014/15	322.4	4.0	1,297.0	173.0	748.1	1,264.5	243.3
2015/16	321.5	3.9	1,268.6	166.1	760.4	1,264.9	246.9

Notes: Wheat and coarse grains trade data are on July/June years through 1975/76. From 1976/77 to the present, coarse grains data are on an Oct/Sept trade year.

World Corn and Barley: Supply and Demand

Millions of Metric Tons/Hectares

	Area Harvested	Yield	Production	TY Exports	Feed Dom.	Domestic Consumption	Ending Stocks
Corn							
1993/94	130.8	3.6	476.0	57.4	342.0	509.3	129.4
1994/95	135.2	4.1	559.4	71.9	371.6	535.5	153.3
1995/96	135.0	3.8	516.5	64.8	365.3	536.6	133.3
1996/97	141.5	4.2	593.0	66.6	387.9	560.0	166.3
1997/98	136.3	4.2	574.4	63.1	400.6	573.5	167.2
1998/99	139.0	4.4	606.1	68.7	404.4	582.0	191.4
1999/00	138.9	4.4	608.4	72.0	422.6	605.3	194.4
2000/01	137.1	4.3	591.8	75.9	427.4	610.9	175.3
2001/02	137.1	4.4	601.8	72.7	436.4	625.6	151.5
2002/03	137.8	4.4	603.9	76.8	433.4	628.6	126.8
2003/04	141.6	4.4	627.5	79.0	445.8	649.7	104.6
2004/05	145.3	4.9	716.9	76.0	476.0	690.4	131.1
2005/06	145.4	4.8	700.7	82.5	478.9	708.3	123.5
2006/07	150.5	4.8	716.3	91.3	479.7	730.9	108.9
2007/08	160.2	5.0	795.5	98.2	500.6	776.5	127.9
2008/09	158.7	5.0	799.8	83.6	481.4	784.4	143.3
2009/10	158.3	5.2	824.8	92.7	492.3	827.8	140.3
2010/11	164.5	5.1	835.5	91.7	502.9	852.8	123.1
2011/12	172.2	5.2	889.8	103.7	507.8	885.1	127.8
2012/13	177.6	4.9	870.3	100.5	518.7	865.2	132.9
2013/14	181.2	5.5	991.4	130.2	570.3	949.4	174.9
2014/15	178.7	5.6	1,008.8	127.8	582.4	975.5	208.2
2015/16	177.3	5.5	973.9	127.7	596.1	970.2	211.9
Barley							
1993/94	73.2	2.3	169.0	18.8	123.8	169.1	34.9
1994/95	72.2	2.2	160.7	15.3	120.9	165.6	30.0
1995/96	66.4	2.1	141.2	13.4	107.8	150.7	20.5
1996/97	64.3	2.4	153.2	17.9	106.3	149.5	24.1
1997/98	63.8	2.4	153.9	12.8	104.1	145.8	32.2
1998/99	56.7	2.4	136.0	17.8	99.5	139.3	29.0
1999/00	52.1	2.4	127.4	17.8	94.0	132.5	23.9
2000/01	52.9	2.5	133.0	16.3	94.6	134.3	22.6
2001/02	55.7	2.6	143.4	17.2	95.5	136.8	29.2
2002/03	54.7	2.5	134.3	16.3	94.7	135.9	27.6
2003/04	58.4	2.4	142.7	14.8	103.1	146.8	23.5
2004/05	57.4	2.7	152.1	17.0	100.0	142.5	33.1
2005/06	55.2	2.5	136.2	17.4	97.3	141.0	28.3
2006/07	56.4	2.4	137.0	14.6	98.4	143.8	21.5
2007/08	55.8	2.4	133.0	18.5	91.1	133.9	20.6
2008/09	55.1	2.8	155.1	18.2	100.4	144.0	31.6
2009/10	54.3	2.8	151.1	17.3	101.4	145.3	37.4
2010/11	47.2	2.6	123.2	15.2	91.3	136.3	24.3
2011/12	49.3	2.7	133.6	21.4	91.7	135.2	22.7
2012/13	50.0	2.6	129.2	22.1	88.7	131.4	20.5
2013/14	50.6	2.9	144.5	23.9	97.2	141.2	23.8
2014/15	49.7	2.8	141.2	30.0	96.2	141.0	24.0
2015/16	50.0	2.9	145.2	25.5	97.0	145.6	23.6

Notes: Coarse grains trade data are on July/June years through 1975/76. From 1976/77 to the present, coarse grains data are on an Oct/Sept trade year.

World Rice: Supply and Demand

Millions of Metric Tons/Hectares

	Area Harvested	Yield	Rough Production	Production	TY Exports	Domestic Consumption	Ending Stocks
Rice, Milled							
1986/87	144.8	3.2	464.6	316.1	12.9	310.4	103.3
1987/88	141.4	3.3	464.8	315.1	11.4	313.1	105.3
1988/89	146.6	3.3	490.8	332.1	14.0	325.7	111.7
1989/90	147.8	3.5	510.4	345.3	11.7	336.3	120.6
1990/91	147.0	3.5	519.4	351.4	12.3	345.3	126.7
1991/92	147.5	3.5	522.8	353.2	14.4	353.2	126.7
1992/93	146.5	3.6	524.2	354.0	14.9	357.5	123.2
1993/94	145.3	3.6	526.1	354.7	16.6	358.9	119.0
1994/95	147.3	3.7	540.0	364.1	20.8	365.5	117.6
1995/96	148.4	3.7	547.3	368.8	19.7	368.3	118.1
1996/97	150.1	3.8	565.3	381.4	18.9	379.2	120.3
1997/98	151.7	3.8	575.2	387.4	27.6	380.0	127.7
1998/99	153.1	3.8	587.0	394.9	24.8	388.7	134.0
1999/00	155.9	3.9	608.8	409.3	22.8	400.3	143.1
2000/01	152.4	3.9	594.1	399.3	24.3	395.6	146.7
2001/02	151.3	3.9	594.3	399.5	27.9	413.3	132.9
2002/03	146.9	3.8	563.1	378.2	27.6	408.1	103.0
2003/04	149.3	3.9	585.4	392.5	27.3	413.8	81.7
2004/05	151.8	3.9	596.4	400.8	28.9	408.5	74.0
2005/06	153.9	4.0	622.2	417.8	29.0	415.4	76.5
2006/07	154.5	4.0	625.0	420.1	31.8	421.2	75.4
2007/08	154.9	4.2	643.7	433.7	29.5	428.1	81.0
2008/09	158.1	4.2	668.6	449.3	29.4	437.7	92.6
2009/10	155.6	4.2	656.1	440.6	31.8	438.4	94.9
2010/11	158.4	4.2	672.4	450.6	36.5	445.3	100.1
2011/12	160.5	4.3	697.2	467.7	39.9	461.0	106.8
2012/13	158.6	4.4	704.9	472.8	39.5	468.9	110.7
2013/14	161.7	4.4	713.4	478.4	43.4	481.6	107.6
2014/15	159.9	4.5	712.9	478.2	42.4	482.0	103.7
2015/16	158.8	4.4	699.6	469.3	41.3	484.6	88.4

Notes: Stocks, exports and consumption are expressed on a milled basis in marketing years.

ENDNOTES TO GRAIN: WORLD MARKETS AND TRADE

REGIONAL TABLES

North America: Canada, Mexico, the United States.

Central America: Belize, Costa Rica, El Salvador, Guatemala, Honduras, Nicaragua, Panama.

Caribbean: Anguilla, Antigua and Barbuda, Aruba, Bahamas, Barbados, Bermuda, British Virgin Islands, Cayman Islands, Cuba, Dominica, Dominican Republic, French West Indies, Grenada, Guadeloupe, Haiti, Jamaica and Dep, Leeward-Windward Islands, Martinique, Montserrat, Netherlands Antilles, Puerto Rico, Kitts and Nevis, St. Lucia, St. Vincent and the Grenadines, Trinidad and Tobago, Turks and Caicos Islands, Virgin Islands of the U.S.

South America: Argentina, Bolivia, Brazil, Chile, Colombia, Ecuador, Falkland Islands (Islas Malvinas), French Guiana, Guyana, Paraguay, Peru, Suriname, Uruguay, Venezuela.

EU: Austria, Belgium/Luxembourg, Bulgaria, Croatia, Cyprus, Czech Republic, Denmark, Estonia, Finland, France, Germany, Greece, Hungary, Ireland, Italy, Latvia, Lithuania, Malta, Netherlands, Poland, Portugal, Romania, Slovakia, Slovenia, Spain, Sweden, United Kingdom.

Other Europe: Albania, Azores, Bosnia and Herzegovina, Former Yugoslavia, Gibraltar, Iceland, Macedonia, Montenegro, Norway, Serbia, Switzerland.

Former Soviet Union: Armenia, Azerbaijan, Belarus, Georgia, Kazakhstan, Kyrgyzstan, Moldova, Russia, Tajikistan, Turkmenistan, Ukraine, Uzbekistan.

Middle East: Bahrain, Iran, Iraq, Israel, Jordan, Kuwait, Lebanon, Oman, Qatar, Saudi Arabia, Syria, Turkey, United Arab Emirates, Yemen.

North Africa: Algeria, Egypt, Libya, Morocco, Tunisia.

Sub-Saharan Africa: all African countries except North Africa.

East Asia: China, Hong Kong, Japan, South Korea, North Korea, Macau, Mongolia, Taiwan.

South Asia: Afghanistan, Bangladesh, Bhutan, India, Nepal, Pakistan, Sri Lanka, Maldives.

Southeast Asia: Brunei, Burma, Cambodia, Indonesia, Laos, Malaysia, Philippines, Singapore, Thailand, Vietnam.

Oceania: Australia, Fiji, New Zealand, Papua New Guinea.

OTHER NOTES

Local Marketing Years (LMY): LMY refers to the 12-month period at the onset of the main harvest, when the crop is marketed (i.e., consumed, traded, or stored). The year first listed begins a country's LMY for that commodity (2015/16 starts in 2015); except for summer grains in certain Southern Hemisphere countries and for rice in selected countries, where the second year begins the LMY (2015/16 starts in 2016). Key exporter LMY's are:

Wheat	Corn	Barley	Sorghum
Argentina (Dec/Nov)	Argentina (Mar/Feb)	Australia (Nov/Oct)	Argentina (Mar/Feb)
Australia (Oct/Sep)	Brazil (Mar/Feb)	Canada (Aug/Jul)	Australia (Mar/Feb)
Canada (Aug/Jul)	China (Oct/Sep)	European Union (Jul/Jun)	United States (Sep/Aug)
China (Jul/Jun)	South Africa (May/Apr)	Russia (Jul/Jun)	
European Union (Jul/Jun)	United States (Sep/Aug)	Ukraine (Jul/Jun)	
India (Apr/Mar)		United States (Jun/May)	
Kazakhstan (Jul/Jun)			
Russia (Jul/Jun)			
Turkey (Jun/May)			
Ukraine (Jul/Jun)			
United States (Jun/May)			

For a complete list of local marketing years, please see the FAS website (<http://www.fas.usda.gov/psdonline/psdAvailability.aspx>).

Stocks: Unless otherwise stated, stock data are based on an aggregate of differing local marketing years and should not be construed as representing world stock levels at a fixed point in time.

Consumption: World totals for consumption reflect total utilization, including food, seed, industrial, feed, and waste; as well as differences in local marketing year imports and local marketing year exports. Consumption statistics for regions and individual countries, however, reflect food, seed, industrial, feed, and waste only.

Trade: All PSD tables are balanced on the different local marketing years. All trade tables contain Trade Year (TY) data which puts all countries on a uniform, 12-month period for analytical comparisons: wheat is July/June; coarse grains, corn, barley, sorghum, oats, and rye are Oct/Sept; and rice is calendar year.

EU Consolidation: The trade figures starting from 1999/00 represent the European Union (Croatia plus the former EU-27) and exclude all intra-trade. For the years 1960/61 through 1998/99, figures are the EU-15 and also exclude all intra-trade. EU-15 member states' data for grains are no longer maintained in the official USDA database. Data for the individual NMS-10, plus Bulgaria, Romania, and Croatia, exists only prior to 1999/00.

Statistics: (1) Wheat trade statistics include wheat, flour, and selected pasta products on a grain equivalent basis. (2) Rice trade statistics include rough, brown, milled, and broken on a milled equivalent basis. (3) Coarse grains statistics include corn, barley, sorghum, oats, rye, millet, and mixed grains but exclude trade in barley malt, millet, and mixed grains.

Unaccounted: This term includes grain in transit, reporting discrepancies in some countries, and trade to countries outside the USDA database.

The Global Commodity Analysis Division, Office of Global Analysis, Foreign Agricultural Service, USDA, Washington, DC 20250, prepared this circular. Information is gathered from official statistics of foreign governments and other foreign source materials, reports of U.S. agricultural attachés and Foreign Service officers, office research, and related information. Further information may be obtained by writing the Division or telephoning (202) 720-3448.

Note: The previous report in this series was Grain: World Markets and Trade October 2015. For further details on world grain production, please see World Agricultural Production November 2015.

This circular is available in its entirety on the Internet via the Foreign Agricultural Service Home Page. The address is: <http://www.fas.usda.gov>

Questions may be directed to the following staff:

Teresa McKeivier	(202) 690-1151	Teresa.McKeivier@fas.usda.gov	Wheat
Daniel Archibald	(202) 720-9432	Dan.Archibald@fas.usda.gov	Wheat
Rachel Trego	(202) 720-1073	Rachel.Trego@fas.usda.gov	Rice
Kyle Bonsu	(202) 260-8370	Kyle.Bonsu@fas.usda.gov	Rice
Yoonhee Macke	(202) 690-4199	Yoonhee.Macke@fas.usda.gov	Coarse Grains
Barrett Bumpas	(202) 692-0337	Barrett.Bumpas@fas.usda.gov	Coarse Grains
Andrew Sowell	(202) 720-0262	Andrew.Sowell@fas.usda.gov	Coarse Grains