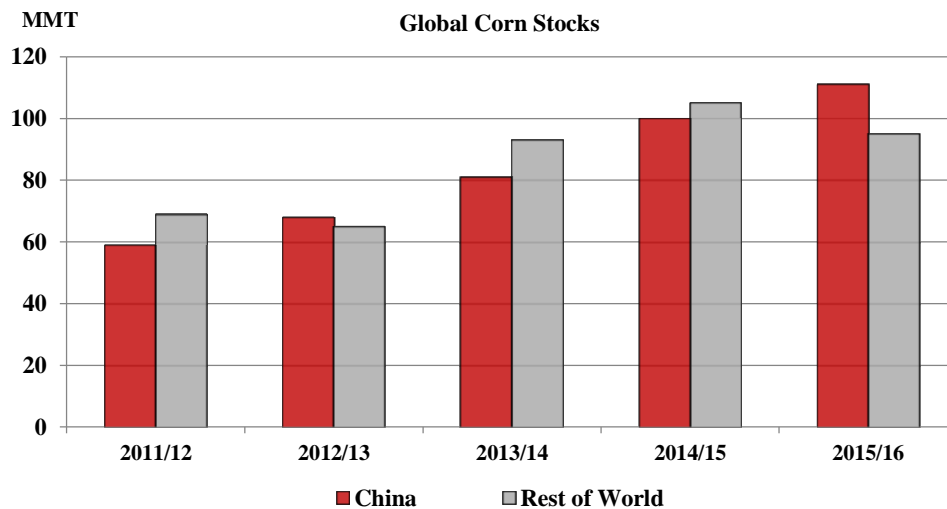


# Grain: World Markets and Trade

## China's Corn Policies Distort Markets for Other Feedstuffs



China's corn stocks are forecast to account for more than a half of global stocks by the end of 2015/16, having nearly doubled in just 5 years. The build-up in stocks has been attributed to a price support policy intended to make China more self-sufficient. Each year, the government establishes minimum purchase prices to encourage corn planting. When market prices fall below the set level, the government buys corn and stores it in the reserves. China is struggling with both massive stocks and domestic prices well above world levels.

As a result of high domestic corn prices, China emerged in 2013/14 as a major importer of alternative feed ingredients such as barley, sorghum, distiller's dried grains, and cassava. Combined imports of these feedstuffs are ahead of last year's pace for the first 4 months (Oct-Jan) in 2015/16; however, barley, sorghum, and corn imports are still forecast down over 30 percent from 2014/15. Government efforts to reduce stocks by promoting domestic corn use are expected to reduce imports of corn substitutes (see [November 2015 report](#)).

For email subscription, click here to register: <https://public.govdelivery.com/accounts/USDAFAS/subscriber/new>

---

## TABLE OF CONTENTS

<b>World Markets and Trade: Commentary and Current Data</b>	
Wheat .....	4
Rice .....	9
Coarse Grains.....	15
<b>Historical Data Series for Selected Regions and Countries .....</b>	<b>35</b>
<b>Endnotes to Grain: World Markets and Trade .....</b>	<b>54</b>

The Foreign Agricultural Service (FAS) updates its production, supply and distribution (PSD) database for cotton, oilseeds, and grains at 12:00 p.m. on the day the *World Agricultural Supply and Demand Estimates* (WASDE) report is released. This circular is released by 12:15 p.m.

**To download the tables in the publication,** go to Production, Supply and Distribution Database (PSD Online): (<http://apps.fas.usda.gov/psdonline/psdHome.aspx>), scroll down to Reports, and Click the plus sign [+] next to Grains.

### **FAS Reports and Databases:**

Current *World Markets and Trade* and *World Agricultural Production* Reports:

<http://apps.fas.usda.gov/psdonline/psdDataPublications.aspx>

Archives *World Markets and Trade* and *World Agricultural Production* Reports:

<http://usda.mannlib.cornell.edu/MannUsda/viewTaxonomy.do?taxonomyID=7>

Production, Supply and Distribution Database (PSD Online):

<http://apps.fas.usda.gov/psdonline/psdHome.aspx>

Global Agricultural Trade System (U.S. Exports and Imports):

<http://apps.fas.usda.gov/gats/default.aspx>

Export Sales Report:

<http://apps.fas.usda.gov/esrquery/>

Global Agricultural Information Network (Agricultural Attaché Reports):

<http://gain.fas.usda.gov/Pages/Default.aspx>

### **Other USDA Reports:**

World Agricultural Supply and Demand Estimates (WASDE):

<http://www.usda.gov/oce/commodity/wasde/>

Economic Research Service:

<http://www.ers.usda.gov/topics/crops>

National Agricultural Statistics Service:

<http://www.nass.usda.gov/Publications/>

All Grain Summary Comparison  
Million Metric Tons

Marketing Year	Wheat			Rice, Milled			Corn			
	2013/ 14	2014/ 15	2015/ 16	2013/ 14	2014/ 15	2015/ 16	2013/ 14	2014/ 15	2015/ 16	
<b>Production</b>										
United States	(Jun-May)	58.1	55.1	55.8	6.1	7.1	6.1	351.3	361.1	345.5
Other		657.3	670.4	676.5	472.3	471.7	465.0	640.1	648.6	624.1
<b>World Total</b>		<b>715.4</b>	<b>725.5</b>	<b>732.3</b>	<b>478.4</b>	<b>478.8</b>	<b>471.1</b>	<b>991.4</b>	<b>1,009.7</b>	<b>969.6</b>
<b>Domestic Consumption</b>										
United States	(Jun-May)	34.3	31.6	32.2	4.0	4.2	3.9	293.0	301.9	302.1
Other		656.5	667.9	674.8	474.2	475.8	478.7	649.2	659.7	674.8
<b>World Total</b>		<b>690.8</b>	<b>699.5</b>	<b>707.0</b>	<b>478.2</b>	<b>480.0</b>	<b>482.6</b>	<b>942.2</b>	<b>961.6</b>	<b>976.9</b>
<b>Ending Stocks</b>										
United States	(Jun-May)	16.1	20.5	26.3	1.0	1.6	1.4	31.3	44.0	46.7
Other		178.0	194.1	211.3	106.5	102.1	89.1	143.5	161.1	160.3
<b>World Total</b>		<b>194.1</b>	<b>214.6</b>	<b>237.6</b>	<b>107.5</b>	<b>103.7</b>	<b>90.5</b>	<b>174.8</b>	<b>205.1</b>	<b>207.0</b>
<b>TY Imports</b>										
United States	(Jun-May)	4.8	4.0	3.2	0.8	0.8	0.8	0.7	0.8	1.3
Other		155.5	154.3	156.8	40.5	38.8	39.2	124.4	121.3	126.7
<b>World Total</b>		<b>160.3</b>	<b>158.3</b>	<b>160.0</b>	<b>41.3</b>	<b>39.6</b>	<b>40.0</b>	<b>125.1</b>	<b>122.1</b>	<b>128.0</b>
<b>TY Exports</b>										
United States	(Jun-May)	31.5	22.8	21.5	3.0	3.5	3.3	50.7	46.8	42.0
Other		130.9	138.6	140.8	40.4	39.1	38.4	79.5	81.1	90.2
<b>World Total</b>		<b>162.4</b>	<b>161.4</b>	<b>162.3</b>	<b>43.4</b>	<b>42.6</b>	<b>41.7</b>	<b>130.2</b>	<b>127.9</b>	<b>132.2</b>

Note: Consumption in this table has not been adjusted for differences in marketing year imports and exports and therefore differs from global totals shown elsewhere. Marketing years for U.S. grains are: Wheat (Jun-May), Rice (Aug-Jul), Corn (Sep-Aug). 'Marketing Year' column is germane for U.S. wheat only.

---

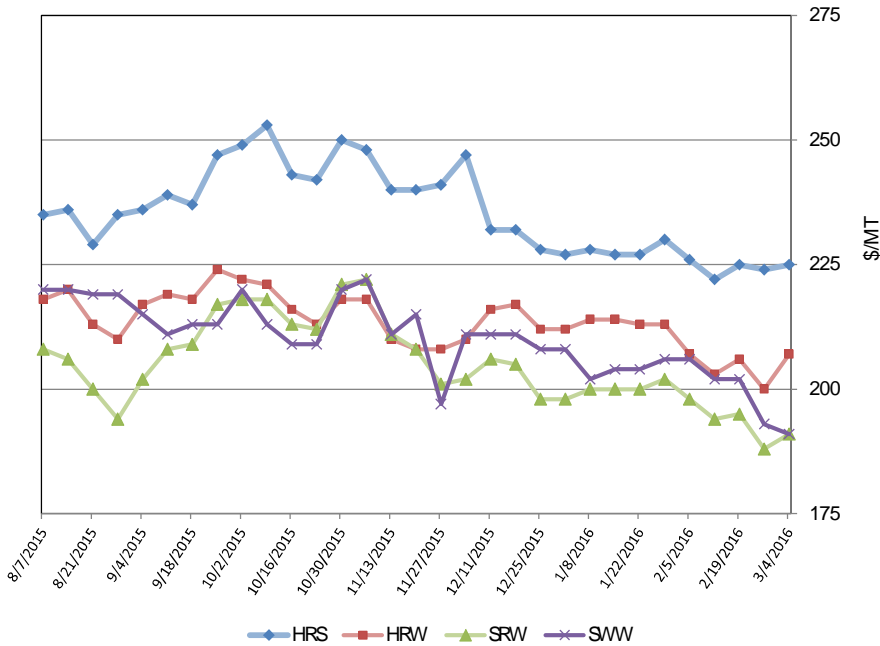
## WHEAT: WORLD MARKETS AND TRADE

### OVERVIEW

World wheat production for 2015/16 is lowered, as sizeable reductions in Australia and India overshadow a slightly larger EU crop. Global trade is also down fractionally this month, as evidenced by lower imports for Egypt, Iraq, the Philippines, and Saudi Arabia. Higher exports for Argentina are more than offset by declines for Australia and Russia. U.S. exports and the season-average farm price are unchanged this month.

### U.S. PRICES:

U.S. Weekly FOB Export Bids



**Domestic:** Prices for all U.S. wheat classes declined throughout February, pressured by abundant competitor supplies. Hard Red Winter (HRW), while experiencing a late rise, slid \$6 to \$207/ton. Hard Red Spring (HRS) fell \$5 to \$225/ton. Both Soft Red Winter (SRW) and Soft White Wheat (SSW) ended at \$191/ton, registering \$11 and \$15 declines, respectively. Despite softening prices across all classes, U.S. wheat remains uncompetitive against most major exporters.

---

## **TRADE CHANGES IN 2015/16**

### **Selected Exporters**

- **Argentina** is raised 500,000 tons to 7.0 million on a stronger pace.
- **Australia** is down 1.0 million tons to 16.5 million on account of tighter supplies and intensified competition from Argentina.
- **Russia** is cut 500,000 tons to 23.0 million due to the recent slow trade to major markets. (**Imports** are up 200,000 tons to 700,000, based primarily upon strong trade from Kazakhstan.)

### **Selected Importers**

- **Egypt** is down 500,000 tons to 11.0 million due to a slower pace. (**Exports** are boosted 200,000 tons to 550,000 due to robust trade in flour and products.)
- **European Union** is lifted 300,000 tons to 6.3 million based on import licenses and the expected utilization of Ukraine's entire calendar year 2016 tariff-rate quota by the close of the trade year (June 30, 2016).
- **Iraq** is lowered 500,000 tons to 2.7 million on account of sluggish trade.
- **Philippines** is dropped 500,000 tons to 4.3 million as a result of weaker-than-expected demand for feed-quality wheat.
- **Saudi Arabia** is reduced 500,000 tons to 3.3 million based on slow trade.

**World Wheat, Flour, and Products Trade**  
July/ June Year, Thousand Metric Tons

	2011/ 12	2012/ 13	2013/ 14	2014/ 15	2015/ 16 Feb	2015/ 16 Mar
<b>TY Exports</b>						
Argentina	11,951	7,450	1,675	4,200	6,500	7,000
Australia	23,031	21,269	18,339	16,575	17,500	16,500
Brazil	1,860	1,753	81	1,688	1,300	1,300
Canada	17,603	18,584	22,157	24,832	22,000	22,000
European Union	16,728	22,786	32,032	35,418	32,500	32,500
Kazakhstan	11,069	6,801	8,000	5,507	6,500	6,500
Mexico	790	729	1,322	1,104	1,100	1,100
Russia	21,627	11,289	18,568	22,800	23,500	23,000
Turkey	3,678	3,583	4,293	4,136	4,500	4,700
Ukraine	5,436	7,190	9,755	11,269	15,500	15,500
Others	11,850	18,040	14,642	11,076	10,692	10,742
Subtotal	125,623	119,474	130,864	138,605	141,592	140,842
United States	28,142	27,734	31,518	22,752	21,500	21,500
World Total	153,765	147,208	162,382	161,357	163,092	162,342
<b>TY Imports</b>						
Afghanistan	2,200	1,600	2,050	2,000	2,200	2,200
Algeria	6,500	6,484	7,484	7,257	7,700	7,700
Bangladesh	2,039	2,725	3,354	3,803	3,600	3,800
Brazil	7,053	7,547	7,061	5,869	6,300	6,300
China	2,933	2,960	6,773	1,926	2,300	2,500
Egypt	11,650	8,300	10,170	11,063	11,500	11,000
Ethiopia	1,550	1,344	670	1,100	2,400	2,400
European Union	7,362	5,276	3,976	5,975	6,000	6,300
Indonesia	6,457	7,146	7,392	7,478	8,100	8,100
Iran	2,400	5,600	6,600	5,006	4,000	4,000
Iraq	3,784	3,948	3,246	2,253	3,200	2,700
Japan	6,354	6,598	6,123	5,878	5,700	5,700
Korea, South	5,188	5,439	4,288	3,942	4,500	4,500
Mexico	5,020	3,823	4,636	4,446	4,400	4,400
Morocco	3,671	3,825	3,892	4,073	3,000	3,000
Nigeria	3,903	4,138	4,580	4,244	4,400	4,400
Philippines	4,075	3,645	3,482	5,099	4,800	4,300
Saudi Arabia	2,904	1,921	3,429	3,487	3,800	3,300
South Africa	1,542	1,558	1,849	1,901	2,000	2,000
Sudan	2,360	1,793	2,664	2,632	2,800	2,800
Thailand	2,646	1,845	1,693	3,489	3,500	3,500
Turkey	4,413	3,312	4,154	5,960	3,800	3,800
Uzbekistan	2,698	1,863	2,224	2,230	2,400	2,400
Vietnam	2,711	1,671	2,158	2,296	2,600	2,600
Yemen	2,685	3,149	3,425	3,245	3,300	3,300
Others	44,773	43,773	48,109	47,655	49,261	49,836
Subtotal	148,871	141,283	155,482	154,307	157,561	156,836
Unaccounted	1,857	2,449	2,115	3,063	2,331	2,306
United States	3,037	3,476	4,785	3,987	3,200	3,200
World Total	153,765	147,208	162,382	161,357	163,092	162,342

TY= Trade Year, see Endnotes.

World Wheat Production, Consumption, and Stocks  
Local Marketing Years, Thousand Metric Tons

	2011/ 12	2012/ 13	2013/ 14	2014/ 15	2015/ 16 Feb	2015/ 16 Mar
<b>Production</b>						
Argentina	15,500	9,300	10,500	12,500	11,000	11,000
Australia	29,905	22,856	25,303	23,076	26,000	24,500
Canada	25,288	27,205	37,530	29,420	27,600	27,600
China	117,400	121,023	121,930	126,208	130,190	130,190
Egypt	8,400	8,500	8,250	8,300	8,100	8,100
European Union	138,182	133,949	144,585	156,656	157,977	158,457
India	86,874	94,882	93,506	95,850	88,940	86,530
Iran	12,400	13,800	14,500	13,000	14,000	14,000
Kazakhstan	22,732	9,841	13,941	12,996	13,748	13,748
Morocco	5,800	3,870	7,000	5,100	8,000	8,000
Pakistan	25,214	23,473	24,211	25,979	25,478	25,478
Russia	56,240	37,720	52,091	59,080	61,000	61,000
Turkey	18,800	16,000	18,750	15,250	19,500	19,500
Ukraine	22,324	15,761	22,278	24,750	27,250	27,250
Uzbekistan	6,300	6,700	6,800	7,150	7,200	7,200
Others	51,033	52,104	56,076	55,009	53,943	53,923
Subtotal	642,392	596,984	657,251	670,324	679,926	676,476
United States	54,244	61,298	58,105	55,147	55,840	55,840
World Total	696,636	658,282	715,356	725,471	735,766	732,316
<b>Total Consumption</b>						
Algeria	8,950	9,450	9,850	10,050	10,250	10,250
Brazil	11,200	10,900	11,400	10,700	10,600	10,600
Canada	9,852	9,530	9,407	9,115	8,800	8,800
China	122,500	125,000	116,500	116,500	114,000	114,000
Egypt	18,600	18,700	18,500	19,100	19,600	19,200
European Union	127,234	119,250	117,300	123,500	125,750	125,750
India	81,408	83,824	93,848	93,130	91,040	90,030
Indonesia	6,250	6,950	7,165	7,365	7,950	7,950
Iran	15,200	16,000	17,000	17,500	18,000	18,000
Morocco	8,800	8,300	9,000	9,000	9,800	9,800
Pakistan	23,100	23,900	24,100	24,500	24,600	24,600
Russia	38,000	33,550	34,100	35,500	37,000	37,000
Turkey	18,100	17,650	17,750	17,500	18,000	18,000
Ukraine	14,950	11,400	11,500	12,000	12,500	12,500
Uzbekistan	7,800	8,000	8,400	8,900	9,300	9,300
Others	145,433	146,786	150,680	153,610	160,160	159,005
Subtotal	665,550	641,247	664,040	673,354	679,217	677,177
United States	31,962	37,768	34,287	31,554	32,197	32,197
World Total	697,512	679,015	698,327	704,908	711,414	709,374
<b>Ending Stocks</b>						
China	55,946	53,960	65,274	76,105	93,595	93,795
European Union	13,522	10,711	9,940	13,653	19,247	20,160
India	19,950	24,200	17,830	17,200	14,800	13,200
Iran	825	5,086	7,221	7,821	7,321	7,321
Morocco	3,305	2,472	4,185	4,120	5,070	5,070
Russia	10,899	4,952	5,175	6,282	7,282	7,982
Ukraine	5,363	2,579	3,670	5,178	4,478	4,478
Others	67,768	53,558	64,725	63,812	60,778	59,290
Subtotal	177,578	157,518	178,020	194,171	212,571	211,296
United States	20,211	19,538	16,065	20,477	26,294	26,294
World Total	197,789	177,056	194,085	214,648	238,865	237,590

Regional Wheat Imports, Production, Consumption, and Stocks

Thousand Metric Tons

	2011/ 12	2012/ 13	2013/ 14	2014/ 15	Feb 2015/ 16	Mar 2015/ 16
<b>TY Imports</b>						
North America	8,554	7,784	9,862	8,923	8,085	8,085
Central America	1,666	1,654	1,833	1,834	1,795	1,795
South America	13,779	14,422	14,831	13,131	13,865	14,115
European Union - 28	7,362	5,276	3,976	5,975	6,000	6,300
Other Europe	1,930	1,703	1,927	1,759	1,895	1,895
Former Soviet Union - 12	8,022	7,228	7,411	7,667	7,490	7,690
Middle East	23,066	24,163	28,342	26,928	25,550	24,750
North Africa	24,855	22,078	25,229	25,180	25,800	25,100
Sub-Saharan Africa	19,176	18,501	20,492	20,946	23,330	23,355
East Asia	16,865	17,352	19,463	14,120	14,910	15,110
South Asia	5,487	5,308	6,733	8,035	7,451	7,751
Southeast Asia	18,019	16,325	17,119	20,595	21,375	20,875
Others	3,127	2,965	3,049	3,201	3,215	3,215
<b>Total</b>	<b>151,908</b>	<b>144,759</b>	<b>160,267</b>	<b>158,294</b>	<b>160,761</b>	<b>160,036</b>
<b>Production</b>						
North America	83,160	91,734	99,012	88,254	87,200	87,200
South America	26,131	18,011	19,762	22,722	20,365	20,345
European Union - 28	138,182	133,949	144,585	156,656	157,977	158,457
Other Europe	3,597	3,431	4,059	3,856	4,132	4,132
Former Soviet Union - 12	114,985	77,802	103,873	112,752	117,528	117,528
Middle East	39,285	36,884	41,708	35,117	40,855	40,855
North Africa	18,366	17,320	19,722	16,900	20,000	20,000
Sub-Saharan Africa	6,231	6,718	7,518	7,721	6,871	6,871
East Asia	118,775	122,490	123,248	127,648	131,564	131,564
South Asia	117,450	126,412	125,917	130,154	122,648	120,238
Oceania	30,288	23,345	25,751	23,490	26,425	24,925
Others	186	186	201	201	201	201
<b>Total</b>	<b>696,636</b>	<b>658,282</b>	<b>715,356</b>	<b>725,471</b>	<b>735,766</b>	<b>732,316</b>
<b>Domestic Consumption</b>						
North America	49,414	53,923	50,344	47,519	47,997	47,997
South America	26,085	26,212	27,126	26,862	27,094	27,189
European Union - 28	127,234	119,250	117,300	123,500	125,750	125,750
Other Europe	4,871	4,721	4,757	4,810	4,890	4,890
Former Soviet Union - 12	79,970	71,725	72,750	75,860	78,305	78,105
Middle East	56,723	56,636	58,717	58,112	60,095	59,820
North Africa	40,927	41,421	42,424	42,676	44,325	43,725
Sub-Saharan Africa	23,260	23,994	26,659	27,164	29,725	29,750
East Asia	137,057	140,072	130,321	129,287	127,151	127,151
South Asia	115,930	121,007	132,041	132,333	131,116	130,006
Southeast Asia	16,665	16,520	16,574	19,280	20,705	20,405
Oceania	7,824	8,111	8,280	8,569	8,800	8,600
Others	3,379	3,366	3,494	3,552	3,594	3,594
<b>Total</b>	<b>689,339</b>	<b>686,958</b>	<b>690,787</b>	<b>699,524</b>	<b>709,547</b>	<b>706,982</b>
<b>Ending Stocks</b>						
North America	26,718	24,950	26,817	28,080	31,242	31,242
South America	4,203	3,537	6,768	6,729	4,281	4,199
European Union - 28	13,522	10,711	9,940	13,653	19,247	20,160
Other Europe	1,458	1,149	1,109	1,259	1,304	1,321
Former Soviet Union - 12	26,373	14,287	15,674	20,012	20,353	21,270
Middle East	12,193	13,798	18,275	17,877	18,857	18,132
North Africa	14,094	11,487	13,550	12,347	13,172	12,872
Sub-Saharan Africa	2,401	2,486	2,957	3,227	2,833	2,808
East Asia	59,235	57,509	68,487	79,632	97,420	97,620
South Asia	25,106	28,004	21,684	23,095	20,623	19,223
Southeast Asia	4,678	3,814	3,582	4,045	3,865	3,665
Oceania	7,436	4,983	4,875	4,279	5,309	4,719
Others	372	341	367	413	359	359
<b>Total</b>	<b>197,789</b>	<b>177,056</b>	<b>194,085</b>	<b>214,648</b>	<b>238,865</b>	<b>237,590</b>

NOTES: Regional definitions appear on last page of this circular. Imports are reported on a trade year basis. All other data are reported using local marketing years.

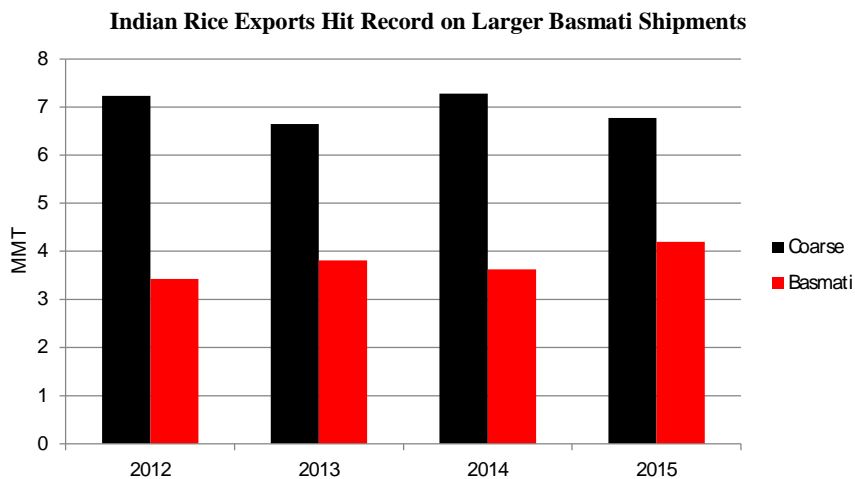


---

## RICE: WORLD MARKETS AND TRADE

### OVERVIEW

Global production for 2015/16 is raised from last month, mostly on an upward revision to India's crop. Despite these adjustments, global rice production is the lowest in 4 years. Trade is raised marginally. Global stocks are revised higher this month but are down 13 percent from the prior year. The U.S. season-average farm price is lowered.

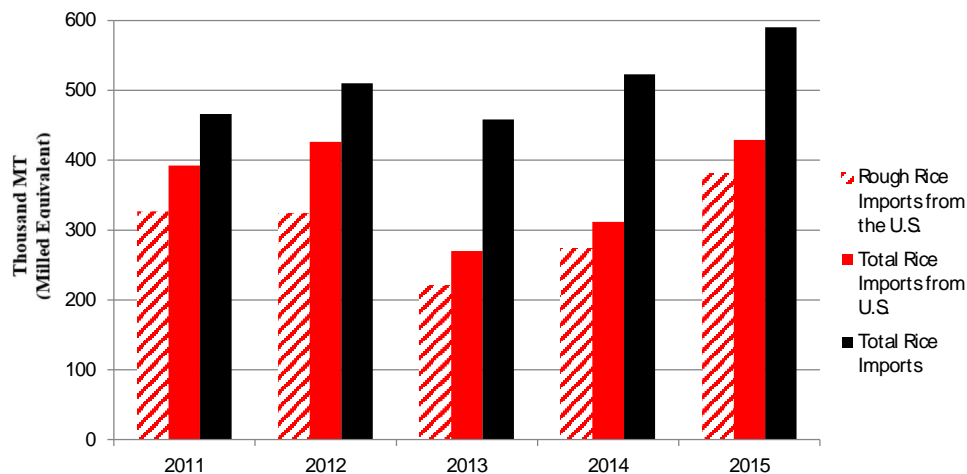


In 2015, India became the top rice exporter, setting a record of 11.0 million tons. Basmati (fragrant) exports surged 16 percent to 4.2 million tons while coarse (non-fragrant) exports were lower compared to the prior year. India is the largest basmati exporter, accounting for over 80 percent of global trade, with the remainder mainly from Pakistan. The primary export markets are the European Union and the Middle East. Larger exports to Saudi Arabia, the United Arab Emirates, and Iraq more than compensated for smaller shipments to Iran.

Basmati exports will likely comprise an even larger share of total Indian exports in the coming year as coarse rice will face competition from other Asian suppliers. Further analysis on the Indian rice market is provided in the [India Grain and Feed Annual](#).

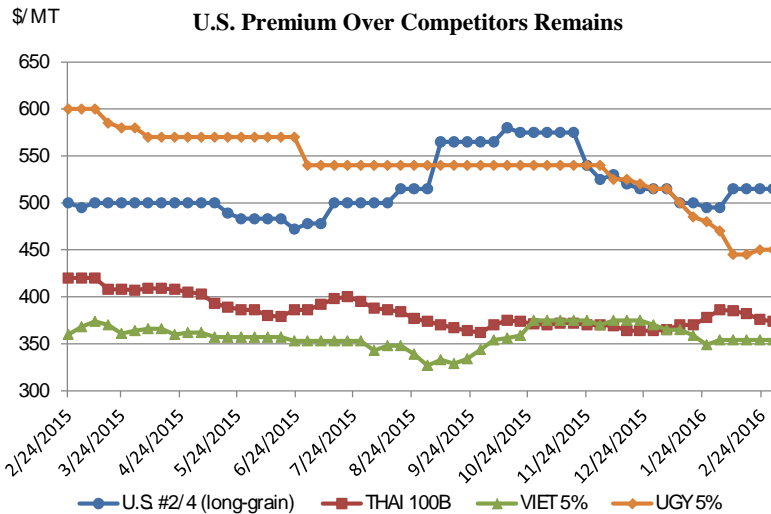
---

### Central American Rice Imports Rise, U.S. Regains Market Share



Central America is an important destination for U.S. exports, particularly for rough rice. The region prefers purchasing lower-cost rough rice and milling it locally to obtain the added value in country, supporting the local processing sector. From 2011 to 2012, the United States had an 80 percent market share. In 2013, however, the region's imports of U.S. rice plummeted from 426,000 tons to 270,000. The United States lost significant market share to Brazil and other Latin American countries.

Over the past couple of years, imports of U.S. rough rice have rebounded, recapturing market share in the region. In addition to improvements in quality, U.S. rough rice benefited from the introduction of policy safeguards in the region, including Costa Rica's decision to increase the import tariff on milled rice. Such policies provided an incentive to import rough rice, and helped the United States regain market opportunities in the region.



Over the past month, U.S. export quotes remained stagnant at \$515/ton, maintaining a substantial premium over both South American and Asian competitors. Vietnamese quotes rose 3 percent to \$364/ton on anticipated growing demand from Asian countries. Thai quotes increased slightly to \$375/ton during the month. Uruguay quotes continued to slide, as farmers continue to harvest the new crop.

**SELECTED TRADE CHANGES for 2016**

- **Cambodia’s** exports are raised 100,000 tons to 900,000 on the pace of trade and continued strong prospects in the region.
- **China’s** exports are lowered 100,000 tons to 350,000 on a slower pace of exports. **Imports** are revised up 300,000 tons to 5.0 million.
- **India’s** exports are raised 100,000 tons to 8.6 million on larger exportable supplies.
- **Indonesia’s** imports are up 100,000 tons to 2.0 million on a smaller crop.

**MULTI-YEAR REVISION**

- **China’s** imports have been revised from 2013 to present, incorporating data covering trade with Pakistan, Cambodia, and Laos. China’s 2013 imports are up 17,000 tons to 3.5 million, 2014 imports are up 282,000 tons to 4.5 million, 2015 imports are up 650,000 tons to 5.2 million.

**World Rice Trade**  
January/ December Year, Thousand Metric Tons

	2011/ 12	2012/ 13	2013/ 14	2014/ 15	2015/ 16 Feb	2015/ 16 Mar
<b>TY Exports</b>						
Argentina	608	526	494	310	480	480
Brazil	1,105	830	852	895	800	800
Burma	1,357	1,163	1,688	1,735	1,800	1,800
Cambodia	900	1,075	1,000	1,100	800	900
China	267	447	393	262	450	350
Egypt	600	700	600	250	400	400
European Union	194	203	284	250	270	270
Guyana	265	346	502	536	520	520
India	10,250	10,480	10,907	10,969	8,500	8,600
Pakistan	3,399	4,126	3,600	4,000	4,600	4,600
Paraguay	262	365	380	407	500	500
Russia	314	140	187	170	190	190
Thailand	6,945	6,722	10,969	9,779	10,000	10,000
Uruguay	1,056	939	957	718	950	950
Vietnam	7,717	6,700	6,325	6,606	7,000	7,000
Others	1,430	1,425	1,261	1,120	1,008	1,008
Subtotal	36,669	36,187	40,399	39,107	38,268	38,368
United States	3,298	3,295	2,998	3,472	3,325	3,325
World Total	39,967	39,482	43,397	42,579	41,593	41,693
<b>TY Imports</b>						
Angola	360	430	496	450	450	450
Bangladesh	53	114	1,290	600	600	600
Brazil	732	712	586	365	700	700
Cameroon	450	550	610	525	530	530
China	2,900	3,500	4,450	5,150	4,700	5,000
Cote d'Ivoire	1,265	830	950	1,100	800	800
Cuba	330	413	377	575	500	500
European Union	1,313	1,375	1,556	1,750	1,500	1,500
Ghana	595	725	590	500	600	600
Indonesia	1,960	650	1,225	1,198	1,900	2,000
Iran	1,500	2,220	1,650	1,300	1,450	1,450
Iraq	1,478	1,294	1,080	1,100	1,200	1,200
Japan	650	690	669	688	700	700
Kenya	400	410	440	450	460	460
Malaysia	1,006	885	989	1,000	1,000	1,020
Mexico	680	746	658	700	700	700
Mozambique	445	500	500	480	500	500
Nepal	351	340	510	550	500	500
Nigeria	3,400	2,400	3,200	3,000	2,500	2,500
Philippines	1,500	1,000	1,800	1,850	2,000	2,000
Saudi Arabia	1,193	1,326	1,410	1,420	1,450	1,450
Senegal	1,200	1,075	1,200	1,100	1,100	1,100
South Africa	870	990	910	1,000	1,000	1,000
United Arab Emirates	430	440	450	460	460	460
Venezuela	375	500	480	500	500	500
Others	11,051	11,735	12,428	11,000	11,068	11,048
Subtotal	36,487	35,850	40,504	38,811	38,868	39,268
Unaccounted	2,840	2,957	2,138	3,010	1,950	1,650
United States	640	675	755	758	775	775
World Total	39,967	39,482	43,397	42,579	41,593	41,693

TY= Trade Year, see Endnotes. Note about dates: 2015/16 is calendar year 2016, 2014/15 is calendar year 2015, and so on.

**World Rice Production, Consumption, and Stocks**  
Local Marketing Years, Thousand Metric Tons

	2011/ 12	2012/ 13	2013/ 14	2014/ 15	2015/ 16 Feb	2015/ 16 Mar
<b>Milled Production</b>						
Bangladesh	33,700	33,820	34,390	34,500	34,600	34,600
Brazil	7,888	8,037	8,300	8,465	7,905	7,905
Burma	11,473	11,715	11,957	12,600	12,200	12,200
Cambodia	4,268	4,670	4,725	4,700	4,350	4,350
China	140,700	143,000	142,530	144,560	145,770	145,770
Egypt	4,250	4,675	4,750	4,530	4,000	4,000
India	105,310	105,240	106,646	105,480	100,000	103,000
Indonesia	36,500	36,550	36,300	35,560	36,300	35,300
Japan	7,792	7,907	7,931	7,849	7,900	7,653
Korea, South	4,224	4,006	4,230	4,241	4,327	4,327
Pakistan	6,160	5,536	6,798	7,005	6,900	6,900
Philippines	10,710	11,428	11,858	11,915	11,500	11,500
Sri Lanka	3,138	2,675	2,840	2,850	3,300	3,300
Thailand	20,460	20,200	20,460	18,750	15,900	15,900
Vietnam	27,152	27,537	28,161	28,234	28,200	28,200
Others	38,020	39,144	40,430	40,413	40,242	40,079
Subtotal	461,745	466,140	472,306	471,652	463,394	464,984
United States	5,866	6,348	6,117	7,106	6,107	6,107
World Total	467,611	472,488	478,423	478,758	469,501	471,091
<b>Consumption and Residual</b>						
Bangladesh	34,300	34,500	34,900	35,200	35,500	35,500
Brazil	7,928	7,850	7,900	7,930	7,900	7,940
Burma	10,200	10,400	10,450	10,650	10,650	10,650
Cambodia	3,400	3,550	3,650	3,650	3,650	3,600
China	139,600	144,000	146,300	148,000	150,000	150,300
Egypt	3,620	4,050	4,000	4,000	4,000	4,000
India	93,334	94,031	99,180	98,600	98,000	98,900
Indonesia	38,188	38,127	38,500	38,300	38,300	38,100
Japan	8,376	8,351	8,279	8,315	8,375	8,300
Korea, South	4,880	4,489	4,422	4,415	4,390	4,390
Nepal	3,677	3,353	3,811	3,716	3,600	3,600
Nigeria	5,600	5,300	5,800	5,800	5,850	5,850
Philippines	12,860	12,850	12,850	13,200	13,250	13,250
Thailand	10,400	10,600	10,875	11,000	11,200	11,200
Vietnam	19,650	21,900	22,000	22,100	21,900	21,900
Others	56,788	58,880	61,259	60,977	61,297	61,260
Subtotal	457,328	464,915	477,582	478,433	479,824	480,378
United States	3,492	3,779	3,977	4,155	3,853	3,853
World Total	460,820	468,694	481,559	482,588	483,677	484,231
<b>Ending Stocks</b>						
China	45,023	46,832	46,802	47,636	47,680	47,756
India	25,100	25,440	22,757	17,766	11,186	13,266
Indonesia	7,403	6,476	5,501	3,959	3,847	3,159
Japan	2,735	2,857	3,108	3,202	3,352	3,180
Korea, South	755	780	899	1,188	1,591	1,591
Philippines	1,509	1,487	1,695	2,210	2,460	2,460
Thailand	9,330	12,808	11,724	9,995	4,995	4,995
Others	13,668	12,784	13,973	16,146	12,844	12,714
Subtotal	105,523	109,464	106,459	102,102	87,955	89,121
United States	1,303	1,156	1,025	1,552	1,329	1,393
World Total	106,826	110,620	107,484	103,654	89,284	90,514

Note: All data are reported on a milled basis.

## Regional Rice Imports, Production, Consumption, and Stocks

Thousand Metric Tons

	2011/ 12	2012/ 13	2013/ 14	2014/ 15	Feb 2015/ 16	Mar 2015/ 16
<b>TY Imports</b>						
North America	1,664	1,776	1,771	1,808	1,835	1,835
Caribbean	845	971	901	1,174	1,075	1,075
South America	1,896	1,843	1,824	1,678	1,947	1,947
Other Europe	114	125	89	105	125	125
Former Soviet Union - 12	469	557	567	392	431	411
Middle East	6,455	7,152	6,637	6,085	6,370	6,370
North Africa	777	487	480	466	455	455
Sub-Saharan Africa	12,135	11,740	12,909	11,740	11,370	11,370
East Asia	4,389	5,349	6,043	6,672	6,335	6,635
South Asia	737	722	2,581	1,620	1,270	1,270
Southeast Asia	5,488	3,606	5,027	5,308	6,095	6,215
Others	2,158	2,197	2,430	2,521	2,335	2,335
<b>Total</b>	<b>37,127</b>	<b>36,525</b>	<b>41,259</b>	<b>39,569</b>	<b>39,643</b>	<b>40,043</b>
<b>Production</b>						
North America	5,979	6,479	6,248	7,285	6,241	6,241
Caribbean	1,002	974	1,040	1,065	976	976
South America	15,215	15,852	16,384	16,315	16,209	16,056
European Union - 28	2,139	2,100	1,937	1,902	2,005	2,005
Former Soviet Union - 12	1,294	1,294	1,205	1,185	1,261	1,261
Middle East	2,170	2,251	2,450	2,443	2,392	2,392
North Africa	4,289	4,704	4,789	4,530	4,000	4,000
Sub-Saharan Africa	12,997	13,376	14,006	14,378	14,372	14,372
East Asia	155,488	157,843	157,681	159,560	160,767	160,520
South Asia	152,027	150,631	154,490	153,436	148,420	151,420
Southeast Asia	113,649	115,490	116,867	115,435	112,011	111,001
Others	1,362	1,494	1,326	1,224	847	847
<b>Total</b>	<b>467,611</b>	<b>472,488</b>	<b>478,423</b>	<b>478,758</b>	<b>469,501</b>	<b>471,091</b>
<b>Domestic Consumption</b>						
North America	4,668	4,977	5,202	5,379	5,083	5,083
Central America	1,156	1,171	1,193	1,243	1,247	1,247
Caribbean	1,977	1,964	1,973	2,131	2,078	2,078
South America	14,130	14,354	14,542	14,563	14,743	14,766
European Union - 28	3,300	3,250	3,250	3,265	3,280	3,280
Former Soviet Union - 12	1,435	1,579	1,551	1,403	1,446	1,426
Middle East	8,603	8,854	9,029	8,915	8,902	8,902
North Africa	4,045	4,572	4,480	4,430	4,430	4,430
Sub-Saharan Africa	23,811	24,777	26,628	26,079	26,285	26,285
East Asia	156,212	160,349	162,591	164,069	166,045	166,270
South Asia	137,167	137,462	143,946	144,107	143,670	144,570
Southeast Asia	99,128	101,994	103,092	103,904	104,011	103,761
Others	661	707	676	520	495	495
<b>Total</b>	<b>456,293</b>	<b>466,010</b>	<b>478,153</b>	<b>480,008</b>	<b>481,715</b>	<b>482,593</b>
<b>Ending Stocks</b>						
North America	1,455	1,345	1,176	1,704	1,442	1,506
Central America	235	189	208	242	229	229
Caribbean	343	279	261	226	199	199
South America	1,656	1,591	1,902	2,135	1,828	1,747
European Union - 28	1,146	1,188	1,163	1,231	1,176	1,176
Middle East	1,526	2,039	1,836	1,521	1,331	1,331
North Africa	487	427	602	916	541	541
Sub-Saharan Africa	2,085	2,297	1,820	2,493	1,620	1,620
East Asia	48,887	50,832	51,097	52,317	52,910	52,814
South Asia	27,461	26,819	25,629	21,690	14,525	16,605
Southeast Asia	21,371	23,197	21,399	18,893	13,302	12,573
Oceania	40	238	241	182	68	68
Others	134	179	150	104	113	105
<b>Total</b>	<b>106,826</b>	<b>110,620</b>	<b>107,484</b>	<b>103,654</b>	<b>89,284</b>	<b>90,514</b>

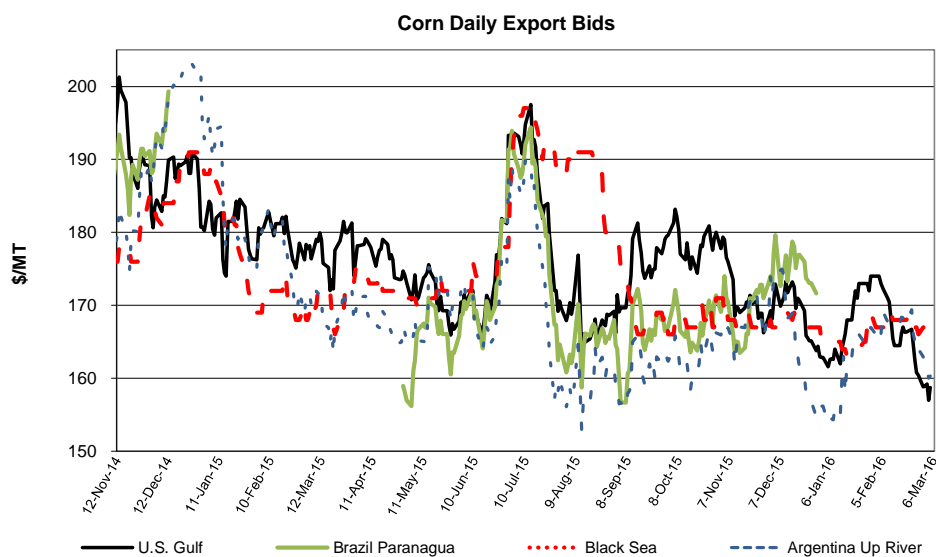
NOTES: Regional definitions appear on last page of this circular. Imports are reported on a trade year basis. All other data are reported using local marketing years.

---

## COARSE GRAINS: WORLD MARKETS AND TRADE

### OVERVIEW

World corn production for 2015/16 is marginally lower, driven mainly by a smaller South African crop. Global trade is projected up, highlighted by greater imports for South Africa and the Philippines. Exports for Brazil, Indonesia, and South Africa are boosted, more than offsetting a cut in India. The U.S. season-average farm price is unchanged.



### PRICES

Since the February WASDE report, U.S. export quotes fell \$13/ton to \$159 due to large global supplies and strong competition. U.S. corn has dropped to a discount against all major exporters for the first time since January 2015. Both Argentine and Black Sea quotes fell this month (now \$160/ton and \$165/ton, respectively) based on strengthened global competition. Brazilian prices are seasonally unavailable.

---

## **TRADE CHANGES IN 2015/16**

### **Selected Exporters**

- **Brazilian corn** is boosted 1.0 million tons to 37.5 million on the continued fast pace of shipments.
- **Indian corn** is down 200,000 tons to 500,000 reflecting higher domestic prices and fading competitiveness in the world market.
- **Indonesian corn** is raised 225,000 tons to 250,000 with larger expected shipments to the Philippines. (**Imports** are down 200,000 tons to 3.1 million on a larger crop.)

### **Selected Importers**

- **Mexican corn** is up 200,000 tons to 11.5 million on the fast pace of sales, particularly from the United States.
- **Philippine corn** is boosted 300,000 tons to 800,000 to offset lower production. Feed use is expected to remain strong with wheat feeding reduced.
- **South African corn** is raised 700,000 tons to 2.7 million on lower expected production and the intensifying pace of arrivals. (**Exports** are up 200,000 tons to 800,000 on higher expected demand from Southern African Customs Union (SACU) partners.)
- **Venezuelan corn** is down 200,000 tons to 1.9 million on the slow pace of imports.
- **Pakistani sorghum** is up 115,000 tons to 130,000 based on recent U.S. export sales. High domestic corn prices are driving sorghum use in feed rations.



World Coarse Grain Trade  
October/ September Year, Thousand Metric Tons

	2011/ 12	2012/ 13	2013/ 14	2014/ 15	2015/ 16 Feb	2015/ 16 Mar
<b>TY Exports</b>						
Argentina	22,308	29,497	16,630	21,001	22,805	22,805
Australia	7,279	6,410	7,003	7,271	7,425	7,425
Brazil	12,677	26,078	22,059	21,954	36,535	37,535
Canada	3,853	4,658	5,460	3,594	4,050	4,050
European Union	7,177	8,914	7,842	15,067	10,355	10,482
Mexico	694	522	501	792	1,000	1,000
Paraguay	2,188	2,861	2,718	3,031	2,715	2,715
Russia	5,997	4,365	7,072	9,152	6,910	6,920
Serbia	2,345	628	1,755	2,967	1,725	1,725
Ukraine	17,447	15,527	24,125	24,208	19,290	19,290
Others	11,290	12,124	12,640	7,894	7,325	7,560
Subtotal	93,255	111,584	107,805	116,931	120,135	121,507
United States	40,106	20,586	56,772	56,340	49,935	49,935
World Total	133,361	132,170	164,577	173,271	170,070	171,442
<b>TY Imports</b>						
Algeria	3,741	3,289	4,946	4,863	4,830	4,830
Chile	1,523	1,327	1,621	1,707	2,050	2,050
China	7,924	5,604	12,445	25,699	17,250	17,250
Colombia	4,103	4,090	4,795	4,747	4,830	4,830
Egypt	7,252	5,097	8,776	7,925	8,055	8,055
European Union	6,908	11,777	16,293	9,255	16,235	16,255
Indonesia	1,724	2,719	3,501	3,381	3,300	3,100
Iran	5,700	4,800	6,600	8,100	6,500	6,500
Israel	1,530	1,564	2,073	1,610	1,975	1,975
Japan	17,730	17,743	17,501	16,725	17,025	17,025
Jordan	1,311	1,406	1,672	1,459	1,575	1,475
Kenya	490	202	894	979	1,100	1,100
Korea, South	7,726	8,265	10,499	10,253	10,090	10,090
Libya	829	1,220	1,493	1,685	1,650	1,650
Malaysia	3,309	3,048	3,476	3,221	3,500	3,500
Mexico	12,819	7,627	11,317	11,570	12,050	12,250
Morocco	2,479	1,831	2,858	2,217	2,300	2,300
Peru	1,927	2,404	2,336	2,863	2,825	2,825
Saudi Arabia	10,485	12,390	11,332	11,115	11,525	11,525
South Africa	565	92	235	611	2,125	2,825
Taiwan	4,478	4,398	4,356	3,942	4,200	4,200
Tunisia	1,071	1,610	1,449	1,525	1,500	1,600
Turkey	782	1,922	1,977	2,580	1,255	1,255
Venezuela	2,596	2,154	2,627	2,433	2,100	1,900
Vietnam	1,600	1,700	2,800	3,500	3,000	3,000
Others	16,417	15,015	16,971	18,479	18,145	18,460
Subtotal	127,019	123,294	154,843	162,444	160,990	161,825
Unaccounted	3,200	2,361	6,412	7,540	5,470	6,007
United States	3,142	6,515	3,322	3,287	3,610	3,610
World Total	133,361	132,170	164,577	173,271	170,070	171,442

TY= Trade Year, see Endnotes.

World Coarse Grains Production, Consumption, and Stocks  
Local Marketing Years, Thousand Metric Tons

	2011/ 12	2012/ 13	2013/ 14	2014/ 15	2015/ 16 Feb	2015/ 16 Mar
<b>Production</b>						
Argentina	30,105	37,246	35,665	34,032	35,061	35,066
Australia	12,257	11,414	12,158	11,651	12,675	12,680
Brazil	75,884	84,253	82,603	87,603	86,583	86,613
Canada	22,921	24,445	28,745	21,992	25,660	25,660
China	198,635	212,192	225,408	222,750	231,580	231,580
Ethiopia	12,264	12,286	14,468	13,350	12,400	12,400
European Union	149,923	145,942	158,916	170,644	150,979	150,979
India	42,058	39,910	43,216	43,081	39,100	38,790
Indonesia	8,850	8,500	9,100	9,000	9,100	9,400
Mexico	25,689	28,881	32,020	32,390	30,775	30,775
Nigeria	17,421	18,573	19,292	19,015	17,950	17,950
Philippines	7,130	7,261	7,532	7,671	7,800	7,500
Russia	33,077	28,658	35,735	40,386	37,320	37,320
Turkey	11,299	10,595	13,075	9,475	14,175	14,175
Ukraine	33,476	29,528	40,022	39,389	33,245	33,245
Others	153,104	151,197	155,971	158,820	152,979	152,520
Subtotal	834,093	850,881	913,926	921,249	897,382	896,653
United States	322,451	285,311	367,089	377,234	366,902	366,902
World Total	1,156,544	1,136,192	1,281,015	1,298,483	1,264,284	1,263,555
<b>Domestic Consumption</b>						
Argentina	10,510	12,050	13,695	14,032	14,576	14,581
Brazil	54,653	55,803	58,028	59,998	60,893	60,943
Canada	20,285	20,339	22,372	21,291	21,953	21,953
China	196,192	209,671	223,546	229,059	237,475	237,975
Egypt	12,736	12,910	14,080	14,809	15,458	15,458
Ethiopia	11,850	12,150	14,300	14,050	12,725	12,725
European Union	151,460	153,095	164,105	163,270	161,445	161,505
India	37,650	35,075	37,600	40,300	39,450	39,950
Indonesia	10,500	10,900	11,900	12,200	12,700	12,800
Japan	17,990	18,030	17,670	16,985	17,105	17,105
Mexico	37,985	36,195	40,885	41,925	42,815	42,815
Nigeria	17,321	18,700	19,350	18,950	18,150	18,150
Russia	27,728	25,134	28,619	31,139	30,420	30,420
Turkey	11,755	13,005	13,430	13,080	14,430	14,430
Ukraine	15,559	14,661	15,977	15,230	14,000	14,000
Others	214,354	217,513	224,584	234,044	237,199	237,339
Subtotal	866,631	859,012	928,322	957,143	945,422	945,917
United States	288,857	275,537	305,048	311,347	315,719	315,719
World Total	1,155,488	1,134,549	1,233,370	1,268,490	1,261,141	1,261,636
<b>Ending Stocks</b>						
Brazil	4,821	9,559	14,257	8,250	8,571	6,885
Canada	3,390	3,024	4,648	3,342	4,059	4,059
China	60,362	68,378	82,652	102,020	112,800	112,800
European Union	15,744	13,083	15,530	17,995	13,946	13,839
Iran	4,684	4,654	5,094	7,234	6,674	6,674
Mexico	1,857	1,628	3,583	4,807	3,817	4,017
Saudi Arabia	3,211	3,391	3,888	3,881	3,997	4,001
Others	39,986	36,269	47,197	46,678	39,991	39,476
Subtotal	134,055	139,986	176,849	194,207	193,855	191,751
United States	27,819	23,531	34,313	46,948	51,323	51,323
World Total	161,874	163,517	211,162	241,155	245,178	243,074

Regional Coarse Grains Imports, Production, Consumption, and Stocks

Thousand Metric Tons

	2011/ 12	2012/ 13	2013/ 14	2014/ 15	Feb 2015/ 16	Mar 2015/ 16
<b>TY Imports</b>						
North America	16,725	14,665	15,353	16,567	16,695	16,895
Central America	2,769	2,470	2,923	3,460	3,575	3,575
Caribbean	2,156	2,327	2,330	2,444	2,410	2,410
South America	11,967	11,812	13,182	13,353	13,405	13,105
European Union - 28	6,908	11,777	16,293	9,255	16,235	16,255
Former Soviet Union - 12	1,037	722	816	752	815	815
Middle East	23,515	25,076	26,614	27,751	25,640	25,540
North Africa	15,372	13,047	19,522	18,215	18,335	18,435
Sub-Saharan Africa	3,329	2,746	3,630	4,455	6,190	6,890
East Asia	38,040	36,163	44,880	56,676	48,665	48,665
Southeast Asia	7,317	8,058	11,292	11,446	10,980	11,080
Others	1,026	946	1,330	1,357	1,655	1,770
<b>Total</b>	<b>130,161</b>	<b>129,809</b>	<b>158,165</b>	<b>165,731</b>	<b>164,600</b>	<b>165,435</b>
<b>Production</b>						
North America	371,061	338,637	427,854	431,616	423,337	423,337
South America	119,602	136,025	131,844	135,002	135,205	135,290
European Union - 28	149,923	145,942	158,916	170,644	150,979	150,979
Other Europe	9,497	6,570	8,813	10,696	8,446	8,446
Former Soviet Union - 12	78,648	68,222	87,749	91,509	82,256	82,256
Middle East	20,412	18,769	21,737	17,957	22,896	22,896
North Africa	11,142	10,126	11,647	11,192	12,532	12,532
Sub-Saharan Africa	99,469	103,590	103,848	105,158	97,075	96,575
East Asia	200,771	214,616	227,798	225,172	233,959	233,959
South Asia	50,175	47,642	51,986	51,622	47,754	47,444
Southeast Asia	28,379	29,138	30,968	31,063	32,003	32,003
Oceania	12,813	12,082	12,805	12,329	13,385	13,390
Others	4,652	4,833	5,050	4,523	4,457	4,457
<b>Total</b>	<b>1,156,544</b>	<b>1,136,192</b>	<b>1,281,015</b>	<b>1,298,483</b>	<b>1,264,284</b>	<b>1,263,555</b>
<b>Domestic Consumption</b>						
North America	347,127	332,071	368,305	374,563	380,487	380,487
South America	86,793	89,796	94,422	96,999	98,917	98,747
European Union - 28	151,460	153,095	164,105	163,270	161,445	161,505
Other Europe	8,375	7,100	7,707	7,974	8,035	8,035
Former Soviet Union - 12	54,378	50,225	55,679	57,878	56,223	56,073
Middle East	41,186	43,027	45,890	45,367	48,231	48,181
North Africa	25,266	24,941	27,998	30,197	31,260	31,310
Sub-Saharan Africa	97,791	103,312	103,169	107,707	104,460	104,760
East Asia	228,717	243,025	257,800	262,662	271,226	271,726
South Asia	45,606	42,604	46,367	49,218	48,426	49,041
Southeast Asia	34,612	35,867	37,907	40,134	41,465	41,665
Oceania	6,518	6,132	5,765	5,572	5,924	5,924
Others	9,556	9,573	10,075	10,168	10,414	10,414
<b>Total</b>	<b>1,137,385</b>	<b>1,140,768</b>	<b>1,225,189</b>	<b>1,251,709</b>	<b>1,266,513</b>	<b>1,267,868</b>
<b>Ending Stocks</b>						
North America	33,066	28,183	42,544	55,097	59,199	59,399
South America	9,644	15,559	21,379	13,393	13,903	12,251
European Union - 28	15,744	13,083	15,530	17,995	13,946	13,839
Other Europe	1,024	603	766	1,200	786	786
Former Soviet Union - 12	6,181	5,037	7,114	7,704	6,061	6,057
Middle East	10,547	10,059	11,817	13,068	13,349	13,303
North Africa	5,504	3,526	5,719	5,645	5,346	5,342
Sub-Saharan Africa	9,272	9,055	9,971	10,539	7,554	7,304
East Asia	63,392	71,012	85,907	105,086	115,894	115,900
South Asia	2,673	2,441	3,935	5,043	3,118	3,311
Southeast Asia	3,061	3,275	4,396	4,366	3,569	3,419
Oceania	978	915	1,134	968	1,409	1,114
Others	788	769	950	1,051	1,044	1,049
<b>Total</b>	<b>161,874</b>	<b>163,517</b>	<b>211,162</b>	<b>241,155</b>	<b>245,178</b>	<b>243,074</b>

NOTES: Regional definitions appear on last page of this circular. Imports are reported on a trade year basis. All other data are reported using local marketing years.

World Corn Trade  
October/September Year, Thousand Metric Tons

	2011/ 12	2012/ 13	2013/ 14	2014/ 15	2015/ 16 Feb	2015/ 16 Mar
<b>TY Exports</b>						
Argentina	16,501	22,789	12,846	18,447	19,500	19,500
Brazil	12,674	26,044	22,041	21,909	36,500	37,500
Burma	200	550	700	850	900	900
Canada	494	1,813	1,917	395	1,000	1,000
European Union	3,287	2,193	2,405	4,026	1,000	1,100
Mexico	694	522	501	784	1,000	1,000
Paraguay	2,188	2,858	2,714	3,012	2,700	2,700
Russia	2,027	1,917	4,192	3,213	3,800	3,800
Serbia	2,331	601	1,736	2,964	1,700	1,700
Ukraine	15,157	12,726	20,004	19,661	15,500	15,500
Others	9,787	10,252	10,414	5,856	5,240	5,465
Subtotal	65,340	82,265	79,470	81,117	88,840	90,165
United States	38,342	18,262	50,684	46,773	42,000	42,000
World Total	103,682	100,527	130,154	127,890	130,840	132,165
<b>TY Imports</b>						
Algeria	3,231	2,918	4,156	4,116	4,200	4,200
Canada	747	493	679	1,533	1,000	1,000
Chile	906	844	1,456	1,516	1,800	1,800
China	5,231	2,702	3,277	5,516	2,500	2,500
Colombia	3,209	3,266	4,436	4,496	4,500	4,500
Dominican Republic	1,054	1,046	1,011	1,202	1,100	1,100
Egypt	7,154	5,059	8,726	7,826	8,000	8,000
European Union	6,113	11,362	15,952	8,756	16,000	16,000
Indonesia	1,724	2,719	3,501	3,381	3,300	3,100
Iran	4,000	3,700	5,500	6,200	5,000	5,000
Israel	1,221	1,224	1,652	1,296	1,600	1,600
Japan	14,892	14,412	15,121	14,656	14,700	14,700
Kenya	400	100	800	900	1,000	1,000
Korea, South	7,636	8,174	10,406	10,168	10,000	10,000
Malaysia	3,309	3,048	3,476	3,221	3,500	3,500
Mexico	11,172	5,676	10,954	11,269	11,300	11,500
Morocco	1,943	1,684	2,349	1,941	2,100	2,100
Peru	1,772	2,254	2,232	2,741	2,700	2,700
Saudi Arabia	1,816	2,063	2,684	2,904	3,500	3,500
South Africa	424	0	79	469	2,000	2,700
Taiwan	4,341	4,232	4,189	3,821	4,100	4,100
Tunisia	853	846	993	1,042	1,100	1,100
Turkey	729	1,656	1,381	2,238	1,200	1,200
Venezuela	2,596	2,154	2,626	2,433	2,100	1,900
Vietnam	1,600	1,700	2,800	3,500	3,000	3,000
Others	12,616	11,550	13,956	14,113	14,700	14,900
Subtotal	100,689	94,882	124,392	121,254	126,000	126,700
Unaccounted	2,228	1,380	5,035	5,827	3,590	4,215
United States	765	4,265	727	809	1,250	1,250
World Total	103,682	100,527	130,154	127,890	130,840	132,165

TY= Trade Year, see Endnotes.

**World Corn Production, Consumption, and Stocks**  
Local Marketing Years, Thousand Metric Tons

	2011/ 12	2012/ 13	2013/ 14	2014/ 15	2015/ 16 Feb	2015/ 16 Mar
<b>Production</b>						
Argentina	21,000	27,000	26,000	27,000	27,000	27,000
Brazil	73,000	81,500	80,000	85,000	84,000	84,000
Canada	11,359	13,060	14,194	11,487	13,600	13,600
China	192,780	205,614	218,490	215,646	224,580	224,580
Egypt	5,500	5,800	5,800	5,960	6,000	6,000
European Union	68,123	58,896	64,635	75,793	57,751	57,751
India	21,759	22,258	24,259	24,170	21,000	21,000
Indonesia	8,850	8,500	9,100	9,000	9,100	9,400
Mexico	18,726	21,591	22,880	25,480	23,500	23,500
Nigeria	9,250	7,630	7,700	7,515	7,000	7,000
Philippines	7,130	7,261	7,532	7,671	7,800	7,500
Russia	6,962	8,213	11,635	11,325	13,000	13,000
South Africa	12,759	12,365	14,925	10,800	7,000	6,500
Turkey	3,600	4,400	5,100	4,800	6,100	6,100
Ukraine	22,838	20,922	30,900	28,450	23,300	23,300
Others	93,347	91,301	96,958	98,496	93,863	93,918
Subtotal	576,983	596,311	640,108	648,593	624,594	624,149
United States	312,789	273,192	351,272	361,091	345,486	345,486
World Total	889,772	869,503	991,380	1,009,684	970,080	969,635
<b>Total Consumption</b>						
Argentina	7,000	7,900	8,800	9,100	9,500	9,500
Brazil	51,500	52,500	55,000	57,000	58,000	58,000
Canada	11,636	11,605	12,700	12,820	13,400	13,400
China	188,000	200,000	208,000	202,000	216,000	216,000
Egypt	11,700	12,000	13,200	13,900	14,500	14,500
European Union	69,500	69,600	76,500	78,000	76,000	76,000
India	17,200	17,500	19,600	22,300	21,700	22,000
Indonesia	10,500	10,900	11,900	12,200	12,700	12,800
Japan	14,900	14,500	15,100	14,700	14,700	14,700
Korea, South	7,815	8,481	9,891	10,250	10,100	10,100
Mexico	29,000	27,000	31,700	34,450	34,700	34,700
Philippines	7,400	7,400	8,000	8,500	8,600	8,700
Russia	4,700	6,400	7,500	8,100	9,200	9,200
South Africa	10,700	11,000	11,500	11,700	10,700	11,000
Ukraine	7,800	8,100	9,700	9,400	8,400	8,400
Others	140,894	141,421	150,127	155,314	155,998	155,798
Subtotal	606,994	601,662	656,372	677,506	665,305	665,630
United States	277,961	262,973	292,965	301,854	302,147	302,147
World Total	884,955	864,635	949,337	979,360	967,452	967,777
<b>Ending Stocks</b>						
Brazil	4,212	9,150	13,972	7,922	8,172	6,522
China	59,335	67,570	81,315	100,464	111,494	111,494
Egypt	2,220	1,076	2,398	2,274	1,764	1,764
European Union	6,682	5,147	6,829	9,352	6,099	6,003
Iran	3,336	3,236	4,476	5,816	5,456	5,456
Korea, South	1,489	1,265	1,860	1,860	1,837	1,837
Mexico	1,316	1,061	2,694	4,209	3,309	3,509
Others	24,164	23,380	29,951	29,240	24,005	23,713
Subtotal	102,754	111,885	143,495	161,137	162,136	160,298
United States	25,122	20,859	31,292	43,974	46,671	46,671
World Total	127,876	132,744	174,787	205,111	208,807	206,969

Regional Corn Imports, Production, Consumption, and Stocks

Thousand Metric Tons

	2011/ 12	2012/ 13	2013/ 14	2014/ 15	Feb 2015/ 16	Mar 2015/ 16
<b>TY Imports</b>						
North America	12,684	10,434	12,360	13,611	13,550	13,750
Central America	2,766	2,470	2,922	3,460	3,575	3,575
South America	9,886	9,651	12,027	12,040	12,050	11,750
European Union - 28	6,113	11,362	15,952	8,756	16,000	16,000
Former Soviet Union - 12	327	321	447	470	490	490
Middle East	10,853	10,942	13,812	15,198	13,800	13,800
North Africa	13,827	11,154	17,036	15,609	16,150	16,150
Sub-Saharan Africa	2,660	2,096	2,937	3,740	5,525	6,225
East Asia	32,282	29,673	33,072	34,218	31,400	31,400
Southeast Asia	7,304	8,040	11,246	11,432	10,965	11,065
Caribbean	2,156	2,327	2,330	2,444	2,410	2,410
Others	596	677	978	1,085	1,335	1,335
<b>Total</b>	<b>101,454</b>	<b>99,147</b>	<b>125,119</b>	<b>122,063</b>	<b>127,250</b>	<b>127,950</b>
<b>Production</b>						
North America	342,874	307,843	388,346	398,058	382,586	382,586
South America	105,578	120,997	117,456	123,440	122,375	122,425
European Union - 28	68,123	58,896	64,635	75,793	57,751	57,751
Other Europe	7,810	4,915	7,210	8,945	6,676	6,676
Former Soviet Union - 12	34,121	32,310	46,916	43,754	39,944	39,944
Middle East	7,164	7,480	8,138	7,853	9,143	9,143
North Africa	5,722	5,891	6,001	6,161	6,201	6,201
Sub-Saharan Africa	62,102	60,564	64,296	60,868	53,851	53,351
East Asia	194,585	207,737	220,583	217,739	226,658	226,658
South Asia	28,646	28,857	31,865	31,535	28,470	28,470
Central America	3,602	3,743	3,893	3,366	3,300	3,300
Southeast Asia	28,138	28,893	30,721	30,818	31,758	31,758
Others	1,307	1,377	1,320	1,354	1,367	1,372
<b>Total</b>	<b>889,772</b>	<b>869,503</b>	<b>991,380</b>	<b>1,009,684</b>	<b>970,080</b>	<b>969,635</b>
<b>Domestic Consumption</b>						
North America	318,597	301,578	337,365	349,124	350,247	350,247
South America	76,391	78,981	83,566	86,456	87,980	87,780
European Union - 28	69,500	69,600	76,500	78,000	76,000	76,000
Other Europe	6,392	5,194	5,847	6,022	6,010	6,010
Former Soviet Union - 12	16,420	18,080	21,131	21,431	21,525	21,525
Middle East	17,585	18,710	19,785	21,835	22,735	22,735
North Africa	18,000	18,450	20,800	22,100	23,100	23,100
Sub-Saharan Africa	60,348	60,033	62,828	63,295	60,388	60,688
East Asia	217,047	229,434	239,295	232,977	247,025	247,025
South Asia	23,875	23,880	27,182	30,005	29,470	29,770
Southeast Asia	34,357	35,609	37,653	39,849	41,210	41,410
Central America	6,350	6,175	6,650	6,690	6,870	6,870
Others	3,344	3,556	3,581	3,804	3,785	3,785
<b>Total</b>	<b>868,206</b>	<b>869,280</b>	<b>942,183</b>	<b>961,588</b>	<b>976,345</b>	<b>976,945</b>
<b>Ending Stocks</b>						
North America	27,803	23,469	35,586	49,585	51,582	51,782
South America	8,290	13,629	19,008	11,453	12,047	10,408
European Union - 28	6,682	5,147	6,829	9,352	6,099	6,003
Other Europe	771	353	517	961	542	542
Former Soviet Union - 12	2,441	2,003	3,421	3,056	2,471	2,470
Middle East	4,510	4,228	5,957	7,071	7,034	7,034
North Africa	2,994	1,719	3,168	3,336	2,577	2,577
Sub-Saharan Africa	7,058	6,631	7,966	8,147	5,495	5,245
East Asia	61,841	69,711	84,099	103,081	114,064	114,064
South Asia	1,625	1,776	2,839	3,577	2,209	2,302
Southeast Asia	3,058	3,270	4,390	4,360	3,563	3,413
Central America	503	474	610	587	572	572
Others	300	334	397	545	552	552
<b>Total</b>	<b>127,876</b>	<b>132,744</b>	<b>174,787</b>	<b>205,111</b>	<b>208,807</b>	<b>206,969</b>

NOTES: Regional definitions appear on last page of this circular. Imports are reported on a trade year basis. All other data are reported using local marketing years.

**World Barley Trade**  
October/ September Year, Thousand Metric Tons

	2011/ 12	2012/ 13	2013/ 14	2014/ 15	2015/ 16 Feb	2015/ 16 Mar
<b>TY Exports</b>						
Argentina	3,631	3,647	2,829	1,598	2,200	2,200
Australia	5,819	4,621	6,262	5,268	6,000	6,000
Canada	1,437	1,316	1,714	1,384	1,350	1,350
European Union	3,646	6,473	4,926	10,642	9,000	9,000
India	52	542	546	97	200	200
Kazakhstan	659	151	501	476	600	600
Russia	3,668	2,366	2,791	5,803	3,000	3,000
Serbia	14	26	18	3	25	25
Turkey	103	0	9	10	25	25
Ukraine	2,166	2,659	3,827	4,332	3,600	3,600
Others	22	166	69	156	35	35
Subtotal	21,217	21,967	23,492	29,769	26,035	26,035
United States	179	163	336	292	300	300
World Total	21,396	22,130	23,828	30,061	26,335	26,335
<b>TY Imports</b>						
Algeria	501	364	778	723	600	600
Azerbaijan	49	14	78	125	100	100
Brazil	274	369	338	489	400	400
Chile	73	79	56	93	100	100
China	2,541	2,184	4,891	9,859	7,500	7,500
Colombia	301	232	253	249	275	275
European Union	364	52	58	268	100	100
Iran	1,700	1,100	1,100	1,900	1,500	1,500
Israel	276	244	304	278	325	325
Japan	1,257	1,356	1,294	1,097	1,300	1,300
Jordan	736	831	997	759	900	800
Kuwait	376	388	436	412	400	400
Libya	183	573	681	1,001	900	900
Mexico	144	47	108	186	150	150
Morocco	536	147	471	276	200	200
Peru	97	103	87	122	100	100
Saudi Arabia	8,600	10,200	8,500	8,200	8,000	8,000
Tunisia	218	764	456	483	400	500
United Arab Emirates	524	541	468	400	400	400
Uruguay	77	252	126	189	175	175
Others	1,579	1,368	1,571	1,417	960	960
Subtotal	20,406	21,208	23,051	28,526	24,785	24,785
Unaccounted	520	491	255	1,105	1,100	1,100
United States	470	431	522	430	450	450
World Total	21,396	22,130	23,828	30,061	26,335	26,335

TY= Trade Year, see Endnotes.

**World Barley Production, Consumption, and Stocks**  
Local Marketing Years, Thousand Metric Tons

	2011/ 12	2012/ 13	2013/ 14	2014/ 15	2015/ 16 Feb	2015/ 16 Mar
<b>Production</b>						
Algeria	1,350	1,500	1,500	1,300	1,300	1,300
Argentina	4,500	5,000	4,750	2,900	3,600	3,600
Australia	8,221	7,472	9,174	8,014	8,700	8,700
Belarus	1,979	1,917	1,674	1,988	2,000	2,000
Canada	7,892	8,012	10,237	7,119	8,225	8,225
China	1,637	1,626	1,700	1,810	1,700	1,700
Ethiopia	1,592	1,782	2,053	2,100	1,900	1,900
European Union	51,883	54,875	59,674	60,460	60,962	60,962
India	1,663	1,619	1,752	1,831	1,600	1,610
Iran	2,900	2,770	2,800	3,200	3,300	3,300
Kazakhstan	2,593	1,500	2,539	2,412	2,675	2,675
Morocco	2,340	1,200	2,700	1,700	3,500	3,500
Russia	16,938	13,952	15,389	20,026	17,100	17,100
Turkey	7,000	5,500	7,300	4,000	7,400	7,400
Ukraine	9,098	6,935	7,561	9,450	8,750	8,750
Others	8,394	8,354	8,835	8,683	8,781	8,752
Subtotal	129,980	124,014	139,638	136,993	141,493	141,474
United States	3,370	4,768	4,719	3,953	4,666	4,666
World Total	133,350	128,782	144,357	140,946	146,159	146,140
<b>Total Consumption</b>						
Algeria	1,800	2,000	2,050	2,050	2,050	2,050
Argentina	1,200	1,300	1,700	1,500	1,500	1,500
Australia	3,300	3,000	2,800	2,900	2,600	2,600
Belarus	2,100	2,000	1,800	2,000	2,200	2,050
Canada	6,916	6,809	7,720	6,472	6,600	6,600
China	3,800	4,000	6,300	11,600	8,800	9,300
Ethiopia	1,600	1,725	2,000	2,100	2,025	2,025
European Union	51,200	51,000	53,400	51,000	53,100	53,100
Iran	4,100	4,300	4,500	4,600	4,800	4,800
Kazakhstan	1,825	1,375	2,000	2,000	2,100	2,100
Morocco	3,100	1,900	2,300	2,700	3,000	3,000
Russia	14,300	12,100	12,700	14,100	13,900	13,900
Saudi Arabia	7,225	8,325	8,625	8,125	8,525	8,525
Turkey	6,750	6,200	6,950	5,350	6,900	6,900
Ukraine	6,300	5,100	5,000	4,500	4,500	4,500
Others	15,559	15,743	16,421	16,578	16,896	16,896
Subtotal	130,811	126,398	136,002	136,622	141,730	141,581
United States	4,170	4,638	4,775	4,234	4,421	4,420
World Total	134,981	131,036	140,777	140,856	146,151	146,001
<b>Ending Stocks</b>						
Algeria	1,458	1,217	1,178	1,304	1,204	1,204
Canada	1,195	983	1,950	1,217	1,542	1,542
European Union	6,069	5,071	5,648	5,649	5,161	5,211
Iran	1,348	1,418	618	1,418	1,218	1,218
Russia	848	726	932	1,561	1,161	1,161
Saudi Arabia	2,814	3,006	3,396	3,486	3,476	3,476
Ukraine	1,172	873	972	1,467	1,222	1,222
Others	6,477	5,389	7,528	6,290	7,486	7,121
Subtotal	21,381	18,683	22,222	22,392	22,470	22,155
United States	1,306	1,750	1,791	1,711	2,087	2,087
World Total	22,687	20,433	24,013	24,103	24,557	24,242



Regional Barley Imports, Production, Consumption, and Stocks

Thousand Metric Tons

	2011/ 12	2012/ 13	2013/ 14	2014/ 15	Feb 2015/ 16	Mar 2015/ 16
<b>TY Imports</b>						
North America	620	499	639	781	625	625
South America	851	1,064	887	1,169	1,085	1,085
European Union - 28	364	52	58	268	100	100
Other Europe	209	127	163	119	160	160
Former Soviet Union - 12	697	375	362	276	320	320
Middle East	12,543	13,906	12,537	12,496	11,760	11,660
North Africa	1,482	1,885	2,433	2,581	2,150	2,250
Sub-Saharan Africa	100	52	116	138	90	90
East Asia	3,924	3,663	6,320	11,081	8,925	8,925
South Asia	67	7	12	15	10	10
Oceania	19	9	46	32	10	10
<b>Total</b>	<b>20,876</b>	<b>21,639</b>	<b>23,573</b>	<b>28,956</b>	<b>25,235</b>	<b>25,235</b>
<b>Production</b>						
North America	11,749	13,812	15,506	11,622	13,476	13,476
South America	5,507	5,884	5,737	3,809	4,593	4,573
European Union - 28	51,883	54,875	59,674	60,460	60,962	60,962
Other Europe	1,189	1,188	1,151	1,270	1,287	1,287
Former Soviet Union - 12	32,227	25,958	29,153	35,522	32,375	32,375
Middle East	11,705	9,689	12,047	8,658	12,358	12,358
North Africa	4,410	3,306	4,725	4,109	5,409	5,409
Sub-Saharan Africa	2,099	2,283	2,521	2,602	2,447	2,447
East Asia	1,962	1,920	1,991	2,134	1,997	1,988
South Asia	2,081	1,956	2,261	2,340	2,103	2,113
Oceania	8,538	7,911	9,591	8,420	9,152	9,152
<b>Total</b>	<b>133,350</b>	<b>128,782</b>	<b>144,357</b>	<b>140,946</b>	<b>146,159</b>	<b>146,140</b>
<b>Domestic Consumption</b>						
North America	11,786	12,347	13,195	11,406	11,746	11,745
South America	3,052	3,152	3,528	3,428	3,585	3,585
European Union - 28	51,200	51,000	53,400	51,000	53,100	53,100
Other Europe	1,366	1,298	1,298	1,389	1,422	1,422
Former Soviet Union - 12	26,268	22,339	23,451	24,505	24,755	24,605
Middle East	22,016	22,435	24,410	21,883	24,021	23,971
North Africa	6,186	5,560	6,230	7,159	7,208	7,258
Sub-Saharan Africa	2,133	2,285	2,555	2,640	2,640	2,640
East Asia	5,580	5,806	8,009	13,135	10,480	10,980
South Asia	2,008	1,868	1,715	1,914	1,910	1,910
Oceania	3,650	3,425	3,250	3,350	3,050	3,050
<b>Total</b>	<b>135,245</b>	<b>131,515</b>	<b>141,041</b>	<b>141,809</b>	<b>143,917</b>	<b>144,266</b>
<b>Ending Stocks</b>						
North America	2,621	3,014	3,980	3,186	3,897	3,897
South America	543	656	815	718	684	666
European Union - 28	6,069	5,071	5,648	5,649	5,161	5,211
Other Europe	205	223	208	201	201	201
Former Soviet Union - 12	2,760	2,193	2,638	3,643	2,895	2,883
Middle East	5,940	5,736	5,788	5,928	6,250	6,200
North Africa	2,449	1,740	2,482	2,239	2,690	2,690
Sub-Saharan Africa	283	330	408	508	405	405
East Asia	961	737	1,039	1,119	1,047	1,052
South Asia	280	142	255	266	269	279
Oceania	576	591	752	646	1,058	758
<b>Total</b>	<b>22,687</b>	<b>20,433</b>	<b>24,013</b>	<b>24,103</b>	<b>24,557</b>	<b>24,242</b>

NOTES: Regional definitions appear on last page of this circular. Imports are reported on a trade year basis. All other data are reported using local marketing years.

**World Sorghum Trade**  
October/ September Year, Thousand Metric Tons

	2011/ 12	2012/ 13	2013/ 14	2014/ 15	2015/ 16 Feb	2015/ 16 Mar
<b>TY Exports</b>						
Argentina	2,163	3,059	953	954	1,100	1,100
Australia	1,185	1,425	405	1,699	1,000	1,000
Brazil	0	2	11	13	30	30
India	131	231	88	121	100	100
Kenya	16	32	51	40	30	30
Nigeria	75	50	50	100	50	50
Ukraine	113	124	229	156	100	100
Others	216	234	241	205	155	162
Subtotal	3,899	5,157	2,028	3,288	2,565	2,572
United States	1,549	2,136	5,717	9,249	7,600	7,600
World Total	5,448	7,293	7,745	12,537	10,165	10,172
<b>TY Imports</b>						
Chile	544	404	109	98	150	150
China	84	631	4,161	10,162	7,000	7,000
Colombia	592	591	104	0	50	50
Ethiopia	30	50	50	75	150	150
European Union	126	291	184	131	80	80
Japan	1,481	1,897	1,003	903	950	950
Kenya	74	102	94	79	100	100
Mexico	1,369	1,793	162	29	500	500
Pakistan	11	10	14	32	15	130
Sudan	125	175	75	100	75	75
Others	654	672	802	403	390	390
Subtotal	5,090	6,616	6,758	12,012	9,460	9,575
Unaccounted	355	434	984	498	595	487
United States	3	243	3	27	110	110
World Total	5,448	7,293	7,745	12,537	10,165	10,172

TY= Trade Year, see Endnotes.

**World Sorghum Production, Consumption, and Stocks**  
Local Marketing Years, Thousand Metric Tons

	2011/ 12	2012/ 13	2013/ 14	2014/ 15	2015/ 16 Feb	2015/ 16 Mar
<b>Production</b>						
Argentina	4,200	4,700	4,400	3,500	3,900	3,900
Australia	2,239	2,230	1,282	2,104	2,200	2,200
Brazil	2,222	2,102	1,890	2,000	2,000	2,000
Burkina	1,500	1,924	1,880	1,836	1,900	1,900
Cameroon	1,150	1,100	1,150	1,150	1,150	1,150
Chad	648	1,172	745	900	900	900
China	2,051	2,556	2,892	2,885	2,900	2,900
Ethiopia	3,951	3,604	4,114	4,000	3,800	3,800
India	5,979	5,281	5,542	5,450	5,500	5,500
Mali	1,191	1,212	820	1,300	1,300	1,300
Mexico	6,425	6,174	8,500	6,270	6,600	6,600
Niger	807	1,376	1,287	1,000	1,100	1,100
Nigeria	6,900	5,943	6,592	6,700	6,150	6,150
Sudan	4,605	4,524	2,249	6,281	5,500	5,500
Tanzania	807	839	832	840	840	840
Others	7,124	6,654	7,113	6,684	6,710	6,710
Subtotal	51,799	51,391	51,288	52,900	52,450	52,450
United States	5,410	6,293	9,966	10,988	15,158	15,158
World Total	57,209	57,684	61,254	63,888	67,608	67,608
<b>Total Consumption</b>						
Argentina	1,900	2,300	2,700	2,800	3,000	3,000
Australia	1,105	1,105	905	505	1,205	1,205
Brazil	2,175	2,300	2,000	2,000	1,900	1,900
Burkina	1,500	1,900	1,900	1,800	1,900	1,900
Cameroon	1,175	1,110	1,165	1,175	1,175	1,175
Chad	650	1,150	850	900	900	900
China	2,200	3,200	6,800	12,900	10,000	10,000
Ethiopia	3,700	3,700	4,200	4,100	4,000	4,000
India	6,000	5,150	5,200	5,100	5,350	5,550
Japan	1,475	1,900	1,030	930	900	900
Mali	1,300	1,200	950	1,200	1,300	1,300
Mexico	8,100	8,100	8,300	6,600	7,200	7,200
Niger	950	1,200	1,300	1,100	1,100	1,100
Nigeria	6,800	5,900	6,550	6,650	6,050	6,050
Sudan	4,500	4,700	2,550	6,000	5,800	5,800
Others	9,541	9,077	8,506	8,185	8,096	8,196
Subtotal	54,554	52,792	55,973	61,906	61,064	61,259
United States	3,916	4,796	4,127	2,429	5,843	5,843
World Total	58,470	57,588	60,100	64,335	66,907	67,102
<b>Ending Stocks</b>						
Argentina	164	781	1,202	902	802	802
Brazil	472	272	151	138	208	208
China	366	326	568	706	581	581
India	206	109	364	593	243	443
Mexico	418	285	647	338	238	238
Nigeria	215	208	200	150	200	200
Sudan	609	588	357	723	493	493
Others	1,632	1,807	1,562	1,450	1,347	1,354
Subtotal	4,082	4,376	5,051	5,000	4,112	4,319
United States	583	385	864	468	1,655	1,655
World Total	4,665	4,761	5,915	5,468	5,767	5,974

## Regional Sorghum Imports, Production, Consumption, and Stocks

Thousand Metric Tons

	2011/ 12	2012/ 13	2013/ 14	2014/ 15	Feb 2015/ 16	Mar 2015/ 16
<b>TY Imports</b>						
North America	1,372	2,036	165	56	610	610
South America	1,199	1,071	239	114	240	240
European Union - 28	126	291	184	131	80	80
Other Europe	0	0	0	0	0	0
Middle East	101	194	232	22	50	50
North Africa	54	1	41	1	5	5
Sub-Saharan Africa	558	587	558	527	550	550
East Asia	1,655	2,650	5,281	11,142	8,005	8,005
Southeast Asia	13	18	46	14	15	15
Others	15	11	15	32	15	130
<b>Total</b>	<b>5,093</b>	<b>6,859</b>	<b>6,761</b>	<b>12,039</b>	<b>9,570</b>	<b>9,685</b>
<b>Production</b>						
North America	11,835	12,467	18,466	17,258	21,758	21,758
Central America	312	339	335	335	335	335
Caribbean	92	92	94	94	94	94
South America	7,247	7,495	7,081	6,349	6,822	6,822
European Union - 28	671	473	703	880	797	797
Middle East	764	814	789	692	635	635
North Africa	847	763	755	756	756	756
Sub-Saharan Africa	24,802	24,783	22,782	26,701	25,509	25,509
East Asia	2,054	2,560	2,895	2,887	2,902	2,902
South Asia	6,116	5,404	5,661	5,553	5,645	5,645
Southeast Asia	54	55	57	55	55	55
Oceania	2,239	2,230	1,282	2,104	2,200	2,200
Others	176	209	354	224	100	100
<b>Total</b>	<b>57,209</b>	<b>57,684</b>	<b>61,254</b>	<b>63,888</b>	<b>67,608</b>	<b>67,608</b>
<b>Domestic Consumption</b>						
North America	12,016	12,896	12,427	9,029	13,043	13,043
Central America	320	325	325	330	340	340
Caribbean	92	92	94	94	94	94
South America	6,104	6,076	5,789	5,749	5,997	5,972
European Union - 28	760	795	880	995	870	880
Middle East	789	1,052	894	865	685	685
North Africa	908	756	794	756	756	756
Sub-Saharan Africa	24,851	25,039	23,501	26,735	26,139	26,139
East Asia	3,771	5,221	7,951	13,911	10,960	10,960
South Asia	6,148	5,283	5,334	5,235	5,510	5,825
Southeast Asia	68	68	64	95	65	65
Oceania	1,105	1,105	905	505	1,205	1,205
Others	55	80	75	75	55	55
<b>Total</b>	<b>56,987</b>	<b>58,788</b>	<b>59,033</b>	<b>64,374</b>	<b>65,719</b>	<b>66,019</b>
<b>Ending Stocks</b>						
North America	1,001	670	1,511	806	1,893	1,893
Central America	23	30	33	38	23	28
South America	718	1,146	1,427	1,118	1,066	1,068
European Union - 28	13	5	18	20	13	12
Middle East	56	65	47	39	35	39
North Africa	60	66	68	69	78	74
Sub-Saharan Africa	1,890	2,037	1,557	1,844	1,614	1,614
East Asia	451	413	627	736	657	658
South Asia	206	109	364	593	243	443
Oceania	230	195	187	136	131	131
Others	17	25	76	69	14	14
<b>Total</b>	<b>4,665</b>	<b>4,761</b>	<b>5,915</b>	<b>5,468</b>	<b>5,767</b>	<b>5,974</b>

NOTES: Regional definitions appear on last page of this circular. Imports are reported on a trade year basis. All other data are reported using local marketing years.

**World Oats Trade**  
October/ September Year, Thousand Metric Tons

	2011/ 12	2012/ 13	2013/ 14	2014/ 15	2015/ 16 Feb	2015/ 16 Mar
<b>TY Exports</b>						
Argentina	13	2	2	2	5	5
Australia	174	240	270	250	350	350
Canada	1,763	1,351	1,732	1,726	1,600	1,600
Chile	106	41	49	84	75	75
European Union	176	126	291	231	200	230
Russia	18	4	6	15	10	20
Ukraine	2	2	6	46	70	70
Others	7	10	14	8	10	10
Subtotal	2,259	1,776	2,370	2,362	2,320	2,360
United States	28	18	29	23	30	30
World Total	2,287	1,794	2,399	2,385	2,350	2,390
<b>TY Imports</b>						
Albania	0	0	0	5	5	5
Algeria	9	7	12	24	30	30
Bosnia and Herzegovina	3	2	3	4	5	5
Canada	11	9	26	12	10	10
China	68	87	116	162	250	250
Colombia	1	1	2	2	5	5
Ecuador	22	19	21	21	20	20
European Union	3	4	3	4	5	5
Japan	54	51	46	47	50	50
Mexico	134	111	93	86	100	100
Norway	49	36	38	2	40	40
Serbia	2	2	2	3	5	5
South Africa	11	11	19	50	25	25
Switzerland	56	44	51	49	50	50
Turkey	4	0	0	5	5	5
Others	15	6	8	8	5	5
Subtotal	442	390	440	484	610	610
Unaccounted	115	49	93	142	140	180
United States	1,730	1,355	1,866	1,759	1,600	1,600
World Total	2,287	1,794	2,399	2,385	2,350	2,390

TY= Trade Year, see Endnotes.

**World Oats Production, Consumption, and Stocks**  
Local Marketing Years, Thousand Metric Tons

	2011/ 12	2012/ 13	2013/ 14	2014/ 15	2015/ 16 Feb	2015/ 16 Mar
<b>Production</b>						
Algeria	67	110	110	110	110	110
Argentina	345	496	445	525	485	485
Australia	1,262	1,121	1,255	1,087	1,300	1,300
Belarus	448	422	352	522	400	400
Brazil	354	361	380	300	300	300
Canada	3,158	2,830	3,906	2,979	3,430	3,430
Chile	451	680	610	421	470	470
China	600	600	580	600	600	600
European Union	7,927	7,909	8,380	7,845	7,640	7,640
Kazakhstan	258	200	305	226	244	244
Mexico	51	84	90	90	90	90
Norway	231	232	214	236	236	236
Russia	5,332	4,027	4,932	5,267	4,550	4,550
Turkey	218	210	210	210	210	210
Ukraine	506	630	467	610	490	490
Others	372	315	328	315	349	349
Subtotal	21,580	20,227	22,564	21,343	20,904	20,954
United States	728	892	938	1,019	1,300	1,300
World Total	22,308	21,119	23,502	22,362	22,204	22,254
<b>Total Consumption</b>						
Algeria	75	119	118	126	140	140
Argentina	350	500	425	525	500	500
Australia	1,100	925	950	875	900	900
Belarus	450	400	375	500	400	400
Brazil	350	350	375	295	290	340
Canada	1,361	1,592	1,660	1,676	1,650	1,650
Chile	400	600	570	355	375	375
China	625	675	700	750	875	875
European Union	7,800	7,700	8,075	7,675	7,675	7,675
Kazakhstan	225	225	275	225	245	245
Mexico	185	195	185	175	190	190
Norway	270	295	245	245	270	270
Russia	5,000	4,300	4,900	5,200	4,600	4,600
Turkey	215	215	215	215	215	215
Ukraine	500	600	475	600	430	430
Others	519	451	502	505	519	519
Subtotal	19,589	19,217	20,264	19,940	19,376	19,466
United States	2,499	2,743	2,757	2,424	2,828	2,828
World Total	22,088	21,960	23,021	22,364	22,204	22,294
<b>Ending Stocks</b>						
Argentina	55	49	67	65	42	45
Australia	134	60	105	67	117	117
Canada	805	446	1,054	681	871	871
Chile	25	61	45	26	46	46
China	127	139	135	147	122	122
European Union	795	901	894	849	619	589
Russia	485	203	230	289	229	219
Others	225	221	199	182	175	177
Subtotal	2,651	2,080	2,729	2,306	2,221	2,186
United States	797	527	359	780	860	860
World Total	3,448	2,607	3,088	3,086	3,081	3,046

## Regional Oats Imports, Production, Consumption, and Stocks

Thousand Metric Tons

	2011/ 12	2012/ 13	2013/ 14	2014/ 15	Feb 2015/ 16	Mar 2015/ 16
<b>TY Imports</b>						
North America	1,875	1,475	1,985	1,857	1,710	1,710
South America	31	26	29	30	30	30
European Union - 28	3	4	3	4	5	5
Other Europe	110	84	94	63	105	105
Former Soviet Union - 12	7	0	2	1	0	0
Middle East	4	0	0	5	5	5
North Africa	9	7	12	24	30	30
Sub-Saharan Africa	11	11	19	50	25	25
East Asia	122	138	162	209	300	300
Oceania	0	0	0	0	0	0
<b>Total</b>	<b>2,172</b>	<b>1,745</b>	<b>2,306</b>	<b>2,243</b>	<b>2,210</b>	<b>2,210</b>
<b>Production</b>						
North America	3,937	3,806	4,934	4,088	4,820	4,820
South America	1,191	1,577	1,478	1,274	1,316	1,366
European Union - 28	7,927	7,909	8,380	7,845	7,640	7,640
Other Europe	373	365	348	369	372	372
Former Soviet Union - 12	6,549	5,285	6,062	6,631	5,690	5,690
Middle East	218	210	210	210	210	210
North Africa	163	166	166	166	166	166
Sub-Saharan Africa	57	60	59	55	55	55
East Asia	602	602	582	602	601	601
Oceania	1,291	1,139	1,283	1,122	1,334	1,334
<b>Total</b>	<b>22,308</b>	<b>21,119</b>	<b>23,502</b>	<b>22,362</b>	<b>22,204</b>	<b>22,254</b>
<b>Domestic Consumption</b>						
North America	4,045	4,530	4,602	4,275	4,668	4,668
South America	1,167	1,515	1,447	1,236	1,256	1,306
European Union - 28	7,800	7,700	8,075	7,675	7,675	7,675
Other Europe	478	474	434	437	472	472
Former Soviet Union - 12	6,180	5,531	6,032	6,531	5,681	5,681
Middle East	215	215	215	215	215	215
North Africa	172	175	174	182	196	196
Sub-Saharan Africa	53	72	95	105	80	80
East Asia	685	730	750	800	925	925
Oceania	1,129	943	978	910	934	934
<b>Total</b>	<b>21,924</b>	<b>21,885</b>	<b>22,802</b>	<b>22,366</b>	<b>22,102</b>	<b>22,152</b>
<b>Ending Stocks</b>						
North America	1,605	974	1,416	1,463	1,733	1,733
South America	93	128	129	104	106	109
European Union - 28	795	901	894	849	619	589
Other Europe	48	27	41	38	43	43
Former Soviet Union - 12	592	332	346	397	319	311
Middle East	17	12	7	7	7	7
North Africa	1	1	1	1	1	1
Sub-Saharan Africa	29	28	11	11	11	11
East Asia	134	144	138	149	125	125
Oceania	134	60	105	67	117	117
<b>Total</b>	<b>3,448</b>	<b>2,607</b>	<b>3,088</b>	<b>3,086</b>	<b>3,081</b>	<b>3,046</b>

NOTES: Regional definitions appear on last page of this circular. Imports are reported on a trade year basis. All other data are reported using local marketing years.

**World Rye Trade**  
October/ September Year, Thousand Metric Tons

	2011/ 12	2012/ 13	2013/ 14	2014/ 15	2015/ 16 Feb	2015/ 16 Mar
<b>TY Exports</b>						
Belarus	25	25	5	5	5	5
Canada	159	178	97	89	100	100
European Union	59	122	201	167	150	150
Russia	284	78	83	121	100	100
Ukraine	9	16	59	13	20	20
Others	4	0	0	0	0	0
Subtotal	540	419	445	395	375	375
United States	8	7	6	3	5	5
World Total	548	426	451	398	380	380
<b>TY Imports</b>						
European Union	302	68	96	96	50	70
Israel	11	34	33	25	25	25
Japan	46	27	37	22	25	25
Korea, South	11	12	8	4	10	10
Norway	11	21	16	5	15	15
Russia	0	25	5	5	5	5
Switzerland	2	9	6	6	5	5
Others	9	2	1	5	0	0
Subtotal	392	198	202	168	135	155
Unaccounted	-18	7	45	-32	45	25
United States	174	221	204	262	200	200
World Total	548	426	451	398	380	380

TY= Trade Year, see Endnotes.



**World Rye Production, Consumption, and Stocks**  
Local Marketing Years, Thousand Metric Tons

	2011/ 12	2012/ 13	2013/ 14	2014/ 15	2015/ 16 Feb	2015/ 16 Mar
<b>Production</b>						
Argentina	45	40	52	97	56	61
Belarus	801	1,082	648	867	800	800
Canada	241	337	223	218	225	225
European Union	6,900	8,763	10,151	8,858	7,960	7,960
Russia	2,967	2,132	3,360	3,279	2,100	2,100
Turkey	366	370	350	350	350	350
Ukraine	579	676	638	475	390	390
Others	137	146	126	144	121	121
Subtotal	12,036	13,546	15,548	14,288	12,002	12,007
United States	154	166	194	183	292	292
World Total	12,190	13,712	15,742	14,471	12,294	12,299
<b>Total Consumption</b>						
Argentina	45	40	52	97	56	61
Belarus	750	1,000	650	850	800	800
Canada	101	127	107	134	123	123
European Union	7,400	8,700	9,650	8,900	7,800	7,850
Israel	11	34	33	25	25	25
Kazakhstan	30	50	40	65	37	37
Norway	27	26	28	20	27	27
Russia	2,850	2,000	3,100	3,250	2,150	2,150
Turkey	375	375	350	350	350	350
Ukraine	625	625	625	475	400	400
Others	161	139	127	106	112	112
Subtotal	12,346	13,146	14,767	14,275	11,877	11,911
United States	311	387	424	406	480	481
World Total	12,657	13,533	15,191	14,681	12,357	12,392
<b>Ending Stocks</b>						
Belarus	110	167	160	172	150	167
Canada	25	46	44	42	44	44
European Union	747	795	1,204	1,080	1,140	1,110
Kazakhstan	3	3	6	2	2	2
Russia	129	153	345	265	140	140
Turkey	24	18	18	23	23	23
Ukraine	132	166	128	106	76	76
Others	5	7	4	1	1	1
Subtotal	1,175	1,355	1,909	1,691	1,576	1,563
United States	11	10	7	15	50	50
World Total	1,186	1,365	1,916	1,706	1,626	1,613

Regional Rye Imports, Production, Consumption, and Stocks

Thousand Metric Tons

	2011/ 12	2012/ 13	2013/ 14	2014/ 15	Feb 2015/ 16	Mar 2015/ 16
<b>TY Imports</b>						
North America	174	221	204	262	200	200
South America	0	0	0	0	0	0
European Union - 28	302	68	96	96	50	70
Other Europe	14	32	23	11	20	20
Former Soviet Union - 12	5	25	5	5	5	5
Middle East	14	34	33	30	25	25
Sub-Saharan Africa	0	0	0	0	0	0
East Asia	57	39	45	26	35	35
Oceania	0	0	0	0	0	0
<b>Total</b>	<b>566</b>	<b>419</b>	<b>406</b>	<b>430</b>	<b>335</b>	<b>355</b>
<b>Production</b>						
North America	395	503	417	401	517	517
South America	49	47	59	105	64	69
European Union - 28	6,900	8,763	10,151	8,858	7,960	7,960
Other Europe	62	46	53	52	51	51
Former Soviet Union - 12	4,375	3,940	4,689	4,682	3,327	3,327
Middle East	366	370	350	350	350	350
Sub-Saharan Africa	3	3	3	3	3	3
East Asia	0	0	0	0	0	0
Oceania	40	40	20	20	22	22
<b>Total</b>	<b>12,190</b>	<b>13,712</b>	<b>15,742</b>	<b>14,471</b>	<b>12,294</b>	<b>12,299</b>
<b>Domestic Consumption</b>						
North America	412	514	531	540	603	604
South America	49	47	59	105	64	69
European Union - 28	7,400	8,700	9,650	8,900	7,800	7,850
Other Europe	76	78	77	66	71	71
Former Soviet Union - 12	4,255	3,675	4,415	4,640	3,387	3,387
Middle East	386	409	383	375	375	375
Sub-Saharan Africa	2	3	3	3	3	3
East Asia	66	37	48	29	35	35
Oceania	40	40	20	20	22	22
<b>Total</b>	<b>12,686</b>	<b>13,503</b>	<b>15,186</b>	<b>14,678</b>	<b>12,360</b>	<b>12,416</b>
<b>Ending Stocks</b>						
North America	36	56	51	57	94	94
South America	0	0	0	0	0	0
European Union - 28	747	795	1,204	1,080	1,140	1,110
Other Europe	0	0	0	0	0	0
Former Soviet Union - 12	374	489	639	545	368	385
Middle East	24	18	18	23	23	23
Sub-Saharan Africa	0	0	0	0	0	0
East Asia	5	7	4	1	1	1
Oceania	0	0	0	0	0	0
<b>Total</b>	<b>1,186</b>	<b>1,365</b>	<b>1,916</b>	<b>1,706</b>	<b>1,626</b>	<b>1,613</b>

NOTES: Regional definitions appear on last page of this circular. Imports are reported on a trade year basis. All other data are reported using local marketing years.



# HISTORICAL DATA SERIES FOR SELECTED REGIONS AND COUNTRIES

---

## CONTENTS

European Union: Grain Supply and Demand .....	36
China: Grain Supply and Demand .....	37
Other Europe: Grain Supply and Demand .....	38
Former Soviet Union: Grain Supply and Demand.....	39
Wheat Supply and Disappearance: Selected Exporters .....	43
Corn Supply and Disappearance: Selected Exporters.....	45
Barley Supply and Disappearance: Selected Exporters .....	47
Sorghum Supply and Disappearance: Selected Exporters .....	48
U.S. Grains: Supply and Distribution.....	49
Total Wheat and Coarse Grains: Supply and Demand .....	50
World Wheat and Coarse Grains: Supply and Demand .....	51
World Corn and Barley: Supply and Demand .....	52
World Rice: Supply and Demand .....	53

European Union: Grain Supply and Demand

Wheat and Coarse Grains Millions of Metric Tons/ Hectares

	Area Harvested	Yield	Production	Imports	Exports	Feed Dom.	Domestic Consumption	Ending Stocks
<b>Wheat</b>								
2004/05	26.2	5.6	147.7	7.1	14.7	59.3	123.9	28.3
2005/06	26.0	5.1	132.9	6.8	15.7	63.0	128.2	24.1
2006/07	24.7	5.1	125.7	5.2	13.9	60.2	126.2	14.8
2007/08	24.9	4.9	120.8	6.8	12.4	52.4	117.2	12.8
2008/09	26.8	5.7	151.9	7.7	25.4	60.5	127.6	19.4
2009/10	26.0	5.4	139.7	5.4	22.3	57.5	125.6	16.6
2010/11	26.0	5.3	136.7	4.6	23.1	52.5	122.8	11.9
2011/12	25.8	5.3	138.2	7.4	16.7	57.5	127.2	13.5
2012/13	26.0	5.2	133.9	5.3	22.8	51.0	119.3	10.7
2013/14	25.9	5.6	144.6	4.0	32.0	49.0	117.3	9.9
2014/15	26.8	5.8	156.7	6.0	35.4	54.5	123.5	13.7
2015/16	26.8	5.9	158.5	6.3	32.5	57.0	125.8	20.2
<b>Coarse Grains</b>								
2004/05	33.9	5.0	169.1	3.0	4.8	118.9	155.2	25.6
2005/06	33.2	4.5	149.5	2.7	4.3	112.4	150.7	22.8
2006/07	32.4	4.3	140.0	8.1	4.5	112.9	150.6	15.7
2007/08	32.6	4.3	138.7	20.3	4.5	121.6	157.1	13.1
2008/09	34.0	4.8	164.9	3.1	5.7	116.1	154.2	21.3
2009/10	32.9	4.8	157.6	2.9	3.0	114.8	152.4	26.3
2010/11	30.2	4.7	142.9	8.5	6.2	116.9	154.6	16.9
2011/12	30.2	5.0	149.9	7.0	6.5	113.2	151.5	15.7
2012/13	31.4	4.7	145.9	11.8	7.4	113.7	153.1	13.1
2013/14	31.4	5.1	158.9	16.3	8.6	122.4	164.1	15.5
2014/15	30.8	5.5	170.6	9.1	14.0	121.5	163.3	18.0
2015/16	30.5	4.9	151.0	16.5	10.1	119.6	161.5	13.8
<b>Wheat and Coarse Grains</b>								
2004/05	60.1	5.3	316.8	10.0	19.5	178.2	279.1	54.0
2005/06	59.1	4.8	282.3	9.4	20.0	175.4	278.9	46.9
2006/07	57.0	4.7	265.7	13.2	18.5	173.1	276.8	30.5
2007/08	57.5	4.5	259.5	27.1	16.9	174.1	274.2	25.9
2008/09	60.9	5.2	316.9	10.8	31.1	176.6	281.8	40.7
2009/10	58.9	5.0	297.3	8.2	25.3	172.3	278.0	42.9
2010/11	56.2	5.0	279.5	13.1	29.3	169.4	277.5	28.8
2011/12	56.0	5.1	288.1	14.3	23.3	170.7	278.7	29.3
2012/13	57.3	4.9	279.9	17.1	30.1	164.7	272.3	23.8
2013/14	57.3	5.3	303.5	20.2	40.7	171.4	281.4	25.5
2014/15	57.5	5.7	327.3	15.1	49.4	176.0	286.8	31.6
2015/16	57.4	5.4	309.4	22.8	42.6	176.6	287.3	34.0

## China: Grain Supply and Demand

## Wheat and Coarse Grains Millions of Metric Tons/ Hectares

	Area Harvested	Yield	Production	Imports	Exports	Feed Dom.	Domestic Consumption	Ending Stocks
<b>Wheat</b>								
2004/05	21.6	4.3	92.0	6.7	1.2	4.0	102.0	38.8
2005/06	22.8	4.3	97.4	1.1	1.4	3.5	101.5	34.5
2006/07	23.6	4.6	108.5	0.4	2.8	4.0	102.0	38.6
2007/08	23.7	4.6	109.3	0.0	2.8	8.0	106.0	39.1
2008/09	23.6	4.8	112.5	0.5	0.7	8.0	105.5	45.8
2009/10	24.3	4.7	115.1	1.4	0.9	10.0	107.0	54.4
2010/11	24.3	4.7	115.2	0.9	0.9	13.0	110.5	59.1
2011/12	24.3	4.8	117.4	2.9	1.0	24.0	122.5	55.9
2012/13	24.3	5.0	121.0	3.0	1.0	25.0	125.0	54.0
2013/14	24.1	5.1	121.9	6.8	0.9	16.0	116.5	65.3
2014/15	24.1	5.2	126.2	1.9	0.8	16.0	116.5	76.1
2015/16	24.1	5.4	130.2	2.5	1.0	12.0	114.0	93.8
<b>Coarse Grains</b>								
2004/05	28.0	4.9	138.3	2.1	7.6	100.3	141.1	37.6
2005/06	28.8	5.1	147.8	2.3	3.8	103.5	147.1	36.9
2006/07	31.1	5.1	159.0	1.2	5.5	105.0	153.5	38.0
2007/08	31.9	5.0	159.2	1.2	0.9	106.7	157.9	39.5
2008/09	32.2	5.4	172.4	1.7	0.2	109.1	161.2	52.2
2009/10	33.4	5.1	169.8	3.8	0.2	119.1	173.3	52.3
2010/11	34.6	5.3	183.8	2.7	0.2	128.8	188.4	50.1
2011/12	35.5	5.6	198.6	7.9	0.1	132.0	196.2	60.4
2012/13	37.1	5.7	212.2	5.6	0.1	146.1	209.7	68.4
2013/14	38.3	5.9	225.4	12.4	0.0	157.8	223.5	82.7
2014/15	39.2	5.7	222.8	25.7	0.0	158.8	229.1	102.0
2015/16	40.2	5.8	231.6	17.3	0.1	165.6	238.0	112.8
<b>Wheat and Coarse Grains</b>								
2004/05	49.6	4.6	230.2	8.8	8.8	104.3	243.1	76.4
2005/06	51.6	4.8	245.3	3.4	5.2	107.0	248.6	71.4
2006/07	54.7	4.9	267.4	1.5	8.2	109.0	255.5	76.6
2007/08	55.6	4.8	268.5	1.2	3.7	114.7	263.9	78.6
2008/09	55.8	5.1	284.9	2.1	0.9	117.1	266.7	98.0
2009/10	57.6	4.9	284.9	5.2	1.1	129.1	280.3	106.7
2010/11	58.9	5.1	299.0	3.6	1.1	141.8	298.9	109.2
2011/12	59.8	5.3	316.0	10.9	1.1	156.0	318.7	116.3
2012/13	61.3	5.4	333.2	8.6	1.1	171.1	334.7	122.3
2013/14	62.4	5.6	347.3	19.2	0.9	173.8	340.0	147.9
2014/15	63.3	5.5	349.0	27.6	0.8	174.8	345.6	178.1
2015/16	64.3	5.6	361.8	19.8	1.1	177.6	352.0	206.6

Other Europe: Grain Supply and Demand  
Wheat and Coarse Grains Millions of Metric Tons/ Hectares

	Area Harvested	Yield	Production	Imports	Exports	Feed Dom.	Domestic Consumption	Ending Stocks
<b>Wheat</b>								
2004/05	1.1	4.3	4.6	1.4	0.3	0.9	5.2	1.3
2005/06	1.0	3.8	3.8	1.4	0.2	0.9	5.1	1.1
2006/07	1.0	3.6	3.5	1.5	0.3	0.7	4.6	1.2
2007/08	1.0	3.8	3.7	1.9	0.5	1.0	4.8	1.5
2008/09	0.9	4.4	4.0	1.7	0.4	1.2	5.1	1.7
2009/10	1.0	3.9	3.8	1.7	0.5	1.0	4.9	1.7
2010/11	0.9	3.7	3.2	1.7	0.6	0.8	4.7	1.3
2011/12	0.9	4.2	3.6	1.9	0.5	1.0	4.9	1.5
2012/13	0.9	4.0	3.4	1.7	0.7	1.0	4.7	1.1
2013/14	0.9	4.4	4.1	1.9	1.3	1.1	4.8	1.1
2014/15	0.9	4.2	3.9	1.8	0.7	1.1	4.8	1.3
2015/16	1.0	4.3	4.1	1.9	1.1	1.1	4.9	1.3
<b>Coarse Grains</b>								
2004/05	2.1	5.0	10.4	0.5	0.6	8.4	9.5	1.5
2005/06	2.1	4.8	10.1	0.6	1.3	8.5	9.7	1.3
2006/07	2.0	4.9	9.8	0.8	0.9	8.5	9.6	1.3
2007/08	2.0	3.4	6.9	0.9	0.1	6.8	7.9	1.1
2008/09	2.1	4.6	9.7	0.6	1.5	7.6	8.7	1.1
2009/10	2.0	4.9	9.7	0.7	1.4	7.5	8.7	1.4
2010/11	2.0	5.0	10.0	0.7	2.0	7.3	8.7	1.5
2011/12	2.1	4.6	9.5	0.8	2.4	7.0	8.4	1.0
2012/13	2.1	3.2	6.6	0.7	0.6	5.9	7.1	0.6
2013/14	2.0	4.4	8.8	0.9	1.8	6.3	7.7	0.8
2014/15	1.9	5.5	10.7	0.8	3.0	6.5	8.0	1.2
2015/16	1.9	4.4	8.4	0.9	1.7	6.5	8.0	0.8
<b>Wheat and Coarse Grains</b>								
2004/05	3.2	4.8	15.1	1.9	0.9	9.3	14.8	2.8
2005/06	3.1	4.5	13.9	2.0	1.4	9.4	14.8	2.4
2006/07	3.0	4.5	13.3	2.3	1.2	9.2	14.2	2.5
2007/08	3.0	3.5	10.6	2.7	0.6	7.8	12.6	2.6
2008/09	3.0	4.6	13.7	2.3	1.9	8.8	13.8	2.8
2009/10	3.0	4.5	13.5	2.4	1.9	8.5	13.7	3.2
2010/11	2.9	4.6	13.2	2.4	2.6	8.1	13.4	2.7
2011/12	2.9	4.5	13.1	2.7	2.8	8.1	13.2	2.5
2012/13	2.9	3.4	10.0	2.4	1.3	7.0	11.8	1.8
2013/14	2.9	4.4	12.9	2.8	3.1	7.4	12.5	1.9
2014/15	2.9	5.1	14.6	2.5	3.7	7.6	12.8	2.5
2015/16	2.9	4.4	12.6	2.8	2.8	7.6	12.9	2.1

Former Soviet Union: Grain Supply and Demand  
Wheat and Coarse Grains Millions of Metric Tons/ Hectares

	Area Harvested	Yield	Production	Imports	Exports	Feed Dom.	Domestic Consumption	Ending Stocks
<b>Wheat</b>								
2009/10	52.6	2.2	114.0	5.4	37.3	26.6	78.3	26.0
2010/11	45.8	1.8	81.0	5.5	13.9	24.4	75.6	23.1
2011/12	49.7	2.3	115.0	8.0	39.7	28.4	80.0	26.4
2012/13	44.0	1.8	77.8	7.2	25.4	21.6	71.7	14.3
2013/14	47.7	2.2	103.9	7.4	37.1	22.7	72.8	15.7
2014/15	46.7	2.4	112.8	7.7	40.2	24.7	75.9	20.0
2015/16	49.0	2.4	117.5	7.7	45.9	25.8	78.1	21.3
<b>Coarse Grains</b>								
2009/10	27.2	2.5	67.6	0.4	15.0	39.0	55.0	7.4
2010/11	21.9	2.2	47.5	1.1	8.8	28.4	41.8	5.5
2011/12	27.0	2.9	78.6	1.0	24.6	38.6	54.4	6.2
2012/13	27.5	2.5	68.2	0.7	19.9	35.6	50.2	5.0
2013/14	29.4	3.0	87.7	0.8	30.8	40.0	55.7	7.1
2014/15	30.2	3.0	91.5	0.8	33.9	41.8	57.9	7.7
2015/16	28.2	2.9	82.3	0.8	28.6	40.7	56.1	6.1

## Former Soviet Union: Grain Supply and Demand (Wheat)

Millions of Tons/ Hectares

Country Mktg Year	Area Harvested	Yield	Production	MY Imports	MY Exports	Feed and Residual	Total Consumption	Ending Stocks
<b>Former Soviet Union - 12</b>								
<b>Kazakhstan</b>								
2012/13	12.4	0.8	9.8	0.0	6.3	2.0	6.8	2.9
2013/14	13.0	1.1	13.9	0.0	8.1	2.0	6.8	2.0
2014/15	11.9	1.1	13.0	0.6	5.5	2.0	6.8	3.2
2015/16	11.6	1.2	13.7	0.1	6.5	2.1	6.9	3.7
<b>Russia</b>								
2012/13	21.3	1.8	37.7	1.2	11.3	11.9	33.6	5.0
2013/14	23.4	2.2	52.1	0.8	18.6	12.5	34.1	5.2
2014/15	23.6	2.5	59.1	0.3	22.8	13.0	35.5	6.3
2015/16	25.6	2.4	61.0	0.7	23.0	14.0	37.0	8.0
<b>Ukraine</b>								
2012/13	5.6	2.8	15.8	0.0	7.2	3.1	11.4	2.6
2013/14	6.6	3.4	22.3	0.1	9.8	3.4	11.5	3.7
2014/15	6.3	3.9	24.8	0.0	11.3	4.0	12.0	5.2
2015/16	7.1	3.8	27.3	0.1	15.5	4.5	12.5	4.5
<b>Uzbekistan</b>								
2012/13	1.4	4.8	6.7	1.9	0.4	1.7	8.0	1.6
2013/14	1.4	4.9	6.8	2.2	0.3	1.9	8.4	1.9
2014/15	1.4	5.1	7.2	2.2	0.2	2.2	8.9	2.2
2015/16	1.4	5.1	7.2	2.4	0.2	2.2	9.3	2.3
<b>Other Former Soviet Union - 12</b>								
2012/13	3.2	2.4	7.8	4.1	0.3	2.9	12.0	2.2
2013/14	3.4	2.6	8.8	4.3	0.4	2.9	12.0	2.9
2014/15	3.4	2.6	8.8	4.5	0.4	3.5	12.7	3.1
2015/16	3.3	2.5	8.3	4.5	0.7	3.0	12.4	2.8
<b>Total Former Soviet Union - 12</b>								
2012/13	44.0	1.8	77.8	7.2	25.4	21.6	71.7	14.3
2013/14	47.7	2.2	103.9	7.4	37.1	22.7	72.8	15.7
2014/15	46.7	2.4	112.8	7.7	40.2	24.7	75.9	20.0
2015/16	49.0	2.4	117.5	7.7	45.9	25.8	78.1	21.3



## Former Soviet Union: Grain Supply and Demand (Barley)

Millions of Tons/ Hectares

Country Mktg Year	Area Harvested	Yield	Production	MY Imports	MY Exports	Feed and Residual	Total Consumption	Ending Stocks
<b>Former Soviet Union - 12</b>								
<b>Kazakhstan</b>								
2012/13	1.6	0.9	1.5	0.0	0.2	1.2	1.4	0.2
2013/14	1.8	1.4	2.5	0.0	0.4	1.7	2.0	0.3
2014/15	1.9	1.3	2.4	0.0	0.5	1.7	2.0	0.2
2015/16	2.0	1.3	2.7	0.0	0.6	1.8	2.1	0.2
<b>Russia</b>								
2012/13	7.6	1.8	14.0	0.3	2.2	7.7	12.1	0.7
2013/14	8.0	1.9	15.4	0.2	2.7	8.3	12.7	0.9
2014/15	8.8	2.3	20.0	0.0	5.3	9.2	14.1	1.6
2015/16	8.1	2.1	17.1	0.1	3.7	9.1	13.9	1.2
<b>Ukraine</b>								
2012/13	3.3	2.1	6.9	0.0	2.1	3.5	5.1	0.9
2013/14	3.2	2.3	7.6	0.0	2.5	3.5	5.0	1.0
2014/15	3.2	3.0	9.5	0.0	4.5	3.0	4.5	1.5
2015/16	3.0	2.9	8.8	0.0	4.5	3.0	4.5	1.2
<b>Uzbekistan</b>								
2012/13	0.1	3.2	0.2	0.0	0.0	0.2	0.3	0.0
2013/14	0.1	3.2	0.2	0.0	0.0	0.2	0.3	0.0
2014/15	0.1	3.2	0.2	0.1	0.0	0.2	0.3	0.0
2015/16	0.1	3.2	0.2	0.1	0.0	0.3	0.3	0.0
<b>Other Former Soviet Union - 12</b>								
2012/13	1.2	2.8	3.3	0.1	0.0	2.7	3.5	0.4
2013/14	1.3	2.5	3.4	0.1	0.0	2.7	3.5	0.4
2014/15	1.3	2.6	3.4	0.2	0.1	2.8	3.6	0.3
2015/16	1.4	2.6	3.6	0.2	0.1	3.0	3.8	0.3
<b>Total Former Soviet Union - 12</b>								
2012/13	13.8	1.9	26.0	0.4	4.6	15.2	22.3	2.2
2013/14	14.5	2.0	29.2	0.3	5.6	16.4	23.5	2.6
2014/15	15.3	2.3	35.5	0.3	10.3	16.9	24.5	3.6
2015/16	14.5	2.2	32.4	0.3	8.9	17.1	24.6	2.9

Former Soviet Union: Grain Supply and Demand (Corn)

Millions of Tons/ Hectares

Country Mktg Year	Area Harvested	Yield	Production	MY Imports	MY Exports	Feed and Residual	Total Consumption	Ending Stocks
<b>Former Soviet Union - 12</b>								
<b>Kazakhstan</b>								
2012/13	0.1	5.0	0.5	0.0	0.0	0.4	0.5	0.0
2013/14	0.1	5.3	0.6	0.0	0.0	0.5	0.6	0.0
2014/15	0.1	5.3	0.7	0.0	0.0	0.5	0.6	0.1
2015/16	0.1	5.3	0.7	0.0	0.1	0.5	0.6	0.2
<b>Russia</b>								
2012/13	1.9	4.2	8.2	0.1	1.9	5.6	6.4	0.3
2013/14	2.3	5.0	11.6	0.1	4.2	6.6	7.5	0.3
2014/15	2.6	4.4	11.3	0.0	3.2	7.2	8.1	0.4
2015/16	2.7	4.9	13.0	0.1	3.8	8.2	9.2	0.4
<b>Ukraine</b>								
2012/13	4.4	4.8	20.9	0.0	12.7	6.8	8.1	1.2
2013/14	4.8	6.4	30.9	0.1	20.0	8.3	9.7	2.5
2014/15	4.6	6.2	28.5	0.0	19.7	8.0	9.4	1.9
2015/16	4.1	5.7	23.3	0.1	15.5	7.0	8.4	1.3
<b>Uzbekistan</b>								
2012/13	0.0	3.4	0.1	0.0	0.0	0.1	0.1	0.0
2013/14	0.0	3.4	0.1	0.0	0.0	0.1	0.1	0.0
2014/15	0.0	3.4	0.1	0.0	0.0	0.1	0.1	0.0
2015/16	0.0	3.4	0.1	0.0	0.0	0.1	0.1	0.0
<b>Other Former Soviet Union - 12</b>								
2012/13	1.0	2.7	2.6	0.2	0.4	2.6	3.0	0.5
2013/14	1.0	3.8	3.7	0.3	0.6	2.9	3.2	0.6
2014/15	0.9	3.7	3.2	0.4	0.3	2.9	3.2	0.7
2015/16	0.9	3.1	2.8	0.4	0.1	2.8	3.2	0.6
<b>Total Former Soviet Union - 12</b>								
2012/13	7.4	4.4	32.3	0.3	15.0	15.5	18.1	2.0
2013/14	8.3	5.7	46.9	0.4	24.8	18.4	21.1	3.4
2014/15	8.2	5.3	43.8	0.5	23.2	18.7	21.4	3.1
2015/16	7.8	5.1	39.9	0.5	19.5	18.7	21.5	2.5

## Wheat Supply and Disappearance: Selected Exporters

Million Metric Tons/ Hectares

Country Mktg Year	Area Harvested	Yield	Production	MY Imports	MY Exports	Feed and Residual	Total Consumption	Ending Stocks
<b>Wheat Competitors</b>								
<b>Argentina</b>								
2011/12	5.2	3.0	15.5	0.0	12.9	0.1	6.0	0.7
2012/13	3.6	2.6	9.3	0.0	3.6	0.3	6.2	0.3
2013/14	3.5	3.0	10.5	0.0	2.3	0.1	6.1	2.5
2014/15	4.2	3.0	12.5	0.0	5.3	0.3	6.4	3.4
2015/16	3.8	2.9	11.0	0.0	7.0	0.3	6.4	1.1
<b>Australia</b>								
2011/12	13.9	2.2	29.9	0.1	24.7	3.2	6.5	7.1
2012/13	13.0	1.8	22.9	0.1	18.6	3.4	6.7	4.7
2013/14	12.6	2.0	25.3	0.2	18.6	3.6	7.0	4.6
2014/15	12.2	1.9	23.1	0.2	16.6	3.8	7.2	4.0
2015/16	12.8	1.9	24.5	0.2	17.0	3.8	7.2	4.4
<b>Canada</b>								
2011/12	8.6	3.0	25.3	0.5	17.4	4.7	9.9	5.9
2012/13	9.5	2.9	27.2	0.5	19.0	4.3	9.5	5.1
2013/14	10.4	3.6	37.5	0.4	23.3	4.2	9.4	10.4
2014/15	9.5	3.1	29.4	0.5	24.1	3.8	9.1	7.1
2015/16	9.6	2.9	27.6	0.5	22.0	3.6	8.8	4.4
<b>European Union</b>								
2011/12	25.8	5.3	138.2	7.4	16.7	57.5	127.2	13.5
2012/13	26.0	5.2	133.9	5.3	22.8	51.0	119.3	10.7
2013/14	25.9	5.6	144.6	4.0	32.0	49.0	117.3	9.9
2014/15	26.8	5.8	156.7	6.0	35.4	54.5	123.5	13.7
2015/16	26.8	5.9	158.5	6.3	32.5	57.0	125.8	20.2
<b>Kazakhstan</b>								
2011/12	13.7	1.7	22.7	0.0	11.8	2.6	7.6	6.2
2012/13	12.4	0.8	9.8	0.0	6.3	2.0	6.8	2.9
2013/14	13.0	1.1	13.9	0.0	8.1	2.0	6.8	2.0
2014/15	11.9	1.1	13.0	0.6	5.5	2.0	6.8	3.2
2015/16	11.6	1.2	13.7	0.1	6.5	2.1	6.9	3.7
<b>Russia</b>								
2011/12	24.8	2.3	56.2	0.6	21.6	15.5	38.0	10.9
2012/13	21.3	1.8	37.7	1.2	11.3	11.9	33.6	5.0
2013/14	23.4	2.2	52.1	0.8	18.6	12.5	34.1	5.2
2014/15	23.6	2.5	59.1	0.3	22.8	13.0	35.5	6.3
2015/16	25.6	2.4	61.0	0.7	23.0	14.0	37.0	8.0

## Wheat Supply and Disappearance: Selected Exporters (Continued)

Million Metric Tons/ Hectares

Country Mktg Year	Area Harvested	Yield	Production	MY Imports	MY Exports	Feed and Residual	Total Consumption	Ending Stocks
Ukraine								
2011/12	6.7	3.4	22.3	0.1	5.4	6.1	15.0	5.4
2012/13	5.6	2.8	15.8	0.0	7.2	3.1	11.4	2.6
2013/14	6.6	3.4	22.3	0.1	9.8	3.4	11.5	3.7
2014/15	6.3	3.9	24.8	0.0	11.3	4.0	12.0	5.2
2015/16	7.1	3.8	27.3	0.1	15.5	4.5	12.5	4.5
Total Wheat Competitors								
2011/12	98.6	3.1	310.2	8.6	110.6	89.7	210.1	49.7
2012/13	91.4	2.8	256.6	7.1	88.7	76.0	193.5	31.3
2013/14	95.4	3.2	306.2	5.5	112.6	74.8	192.1	38.3
2014/15	94.5	3.4	318.5	7.6	121.0	81.4	200.5	42.8
2015/16	97.2	3.3	323.6	7.8	123.5	85.3	204.5	46.1

Corn Supply and Disappearance: Selected Exporters

Million Metric Tons/ Hectares

Country Mktg Year	Area Harvested	Yield	Production	MY Imports	MY Exports	Feed and Residual	Total Consumption	Ending Stocks
<b>Argentina</b>								
2007/08	3.4	6.5	22.0	0.0	14.8	4.9	6.8	2.1
2008/09	2.5	6.2	15.5	0.0	10.3	4.5	6.4	0.9
2009/10	3.0	8.3	25.0	0.0	16.5	5.0	6.9	2.5
2010/11	3.8	6.7	25.2	0.0	16.3	5.3	7.3	4.0
2011/12	3.6	5.8	21.0	0.0	17.1	4.8	7.0	0.9
2012/13	4.0	6.8	27.0	0.0	18.7	5.3	7.9	1.3
2013/14	3.4	7.6	26.0	0.0	17.1	5.8	8.8	1.4
2014/15	3.3	8.2	27.0	0.0	18.5	5.8	9.1	0.8
2015/16	3.4	7.9	27.0	0.0	17.0	6.0	9.5	1.3
<b>Brazil</b>								
2007/08	14.7	4.0	58.6	0.7	7.8	37.5	44.0	10.6
2008/09	14.1	3.6	51.0	1.1	7.1	38.5	45.5	10.1
2009/10	12.9	4.3	56.1	0.4	11.6	41.5	48.5	6.5
2010/11	13.8	4.2	57.4	0.8	8.4	43.0	50.0	6.3
2011/12	15.2	4.8	73.0	0.8	24.3	44.0	51.5	4.2
2012/13	15.8	5.2	81.5	0.9	24.9	44.5	52.5	9.2
2013/14	15.8	5.1	80.0	0.8	21.0	46.0	55.0	14.0
2014/15	15.8	5.4	85.0	0.4	34.5	48.0	57.0	7.9
2015/16	16.2	5.2	84.0	0.6	28.0	49.0	58.0	6.5
<b>China</b>								
2007/08	29.5	5.2	152.3	0.0	0.5	106.0	150.0	38.4
2008/09	29.9	5.6	165.9	0.0	0.2	108.0	153.0	51.2
2009/10	31.2	5.3	164.0	1.3	0.2	118.0	165.0	51.3
2010/11	32.5	5.5	177.2	1.0	0.1	128.0	180.0	49.4
2011/12	33.5	5.7	192.8	5.2	0.1	131.0	188.0	59.3
2012/13	35.0	5.9	205.6	2.7	0.1	144.0	200.0	67.6
2013/14	36.3	6.0	218.5	3.3	0.0	150.0	208.0	81.3
2014/15	37.1	5.8	215.6	5.5	0.0	140.0	202.0	100.5
2015/16	38.1	5.9	224.6	2.5	0.1	152.0	216.0	111.5
<b>South Africa</b>								
2007/08	3.3	4.0	13.2	0.0	2.2	4.8	10.1	1.4
2008/09	2.9	4.3	12.6	0.0	1.7	4.7	10.3	2.0
2009/10	3.3	4.1	13.4	0.0	2.1	4.9	10.6	2.8
2010/11	2.9	3.8	10.9	0.4	2.4	5.0	10.7	1.0
2011/12	3.1	4.1	12.8	0.0	1.8	5.0	10.7	1.3
2012/13	3.2	3.8	12.4	0.1	2.1	5.1	11.0	0.7

Corn Supply and Disappearance: Selected Exporters (Continued)

Million Metric Tons/ Hectares

Country Mktg Year	Area Harvested	Yield	Production	MY Imports	MY Exports	Feed and Residual	Total Consumption	Ending Stocks
2013/14	3.1	4.9	14.9	0.1	2.0	5.5	11.5	2.2
2014/15	3.0	3.5	10.8	1.9	0.7	6.0	11.7	2.5
2015/16	1.9	3.4	6.5	3.5	0.8	5.5	11.0	0.7
Total Corn Competitors								
2007/08	50.9	4.8	246.1	0.8	25.3	153.2	210.9	52.5
2008/09	49.4	5.0	245.0	1.2	19.3	155.7	215.2	64.2
2009/10	50.4	5.1	258.5	1.7	30.3	169.4	231.0	63.0
2010/11	52.9	5.1	270.8	2.2	27.3	181.3	248.0	60.7
2011/12	55.5	5.4	299.5	6.0	43.4	184.8	257.2	65.7
2012/13	58.1	5.6	326.5	3.7	45.8	198.9	271.4	78.7
2013/14	58.6	5.8	339.4	4.1	40.0	207.3	283.3	98.9
2014/15	59.2	5.7	338.4	7.8	53.7	199.8	279.8	111.7
2015/16	59.6	5.7	342.1	6.6	45.9	212.5	294.5	120.0

Barley Supply and Disappearance: Selected Exporters

Million Metric Tons/ Hectares

Country Mktg Year	Area Harvested	Yield	Production	MY Imports	MY Exports	Feed and Residual	Total Consumption	Ending Stocks
<b>Australia</b>								
2007/08	4.9	1.5	7.2	0.0	3.4	2.1	3.1	1.7
2008/09	5.0	1.6	8.0	0.0	3.2	2.9	4.0	2.4
2009/10	4.4	1.8	7.9	0.0	3.9	3.3	4.5	1.9
2010/11	3.7	2.2	8.0	0.0	4.7	3.0	4.2	1.0
2011/12	3.7	2.2	8.2	0.0	5.4	2.1	3.3	0.5
2012/13	3.6	2.1	7.5	0.0	4.5	1.8	3.0	0.5
2013/14	3.8	2.4	9.2	0.0	6.2	1.5	2.8	0.7
2014/15	3.8	2.1	8.0	0.0	5.2	1.6	2.9	0.6
2015/16	4.1	2.1	8.7	0.0	6.0	1.3	2.6	0.7
<b>Canada</b>								
2007/08	4.0	2.8	10.9	0.1	3.0	6.4	7.8	1.6
2008/09	3.5	3.4	11.8	0.0	1.5	7.6	8.9	3.0
2009/10	2.9	3.3	9.5	0.0	1.3	7.5	8.7	2.5
2010/11	2.4	3.2	7.6	0.0	1.2	6.3	7.5	1.5
2011/12	2.4	3.3	7.9	0.0	1.3	5.7	6.9	1.2
2012/13	2.8	2.9	8.0	0.0	1.4	5.7	6.8	1.0
2013/14	2.7	3.9	10.2	0.0	1.6	6.5	7.7	2.0
2014/15	2.1	3.3	7.1	0.1	1.5	5.2	6.5	1.2
2015/16	2.4	3.5	8.2	0.1	1.4	5.4	6.6	1.5
<b>European Union</b>								
2007/08	13.9	4.2	57.8	0.3	3.8	38.9	54.5	5.7
2008/09	14.6	4.5	65.8	0.3	3.6	41.7	57.3	11.0
2009/10	14.0	4.5	62.4	0.1	1.1	41.7	56.8	15.6
2010/11	12.5	4.3	53.7	0.2	4.9	41.3	56.6	7.9
2011/12	11.9	4.3	51.9	0.5	3.0	35.8	51.2	6.1
2012/13	12.5	4.4	54.9	0.1	4.9	35.5	51.0	5.1
2013/14	12.4	4.8	59.7	0.0	5.7	38.0	53.4	5.6
2014/15	12.4	4.9	60.5	0.1	9.5	35.5	51.0	5.6
2015/16	12.3	4.9	61.0	0.3	8.6	37.5	53.1	5.2

Sorghum Supply and Disappearance: Selected Exporters  
 Million Metric Tons/ Hectares

Country Mktg Year	Area Harvested	Yield	Production	MY Imports	MY Exports	Feed and Residual	Total Consumption	Ending Stocks
<b>Argentina</b>								
2007/08	0.6	4.7	2.9	0.0	1.2	1.0	1.2	0.7
2008/09	0.5	3.7	1.7	0.0	1.1	1.0	1.1	0.2
2009/10	0.8	4.8	3.6	0.0	1.8	1.7	1.9	0.2
2010/11	1.0	4.4	4.4	0.0	1.7	1.7	1.9	0.9
2011/12	1.0	4.2	4.2	0.0	3.1	1.7	1.9	0.2
2012/13	1.1	4.5	4.7	0.0	1.8	2.0	2.3	0.8
2013/14	1.0	4.4	4.4	0.0	1.3	2.3	2.7	1.2
2014/15	0.8	4.5	3.5	0.0	1.0	2.4	2.8	0.9
2015/16	0.9	4.5	3.9	0.0	1.0	2.6	3.0	0.8
<b>Australia</b>								
2007/08	0.9	4.0	3.8	0.0	0.8	2.2	2.2	0.8
2008/09	0.8	3.5	2.7	0.0	1.0	1.8	1.8	0.7
2009/10	0.5	3.0	1.5	0.0	0.3	1.2	1.2	0.7
2010/11	0.6	3.1	1.9	0.0	0.9	1.4	1.4	0.4
2011/12	0.7	3.4	2.2	0.0	1.3	1.1	1.1	0.2
2012/13	0.6	3.4	2.2	0.0	1.2	1.1	1.1	0.2
2013/14	0.5	2.4	1.3	0.0	0.4	0.9	0.9	0.2
2014/15	0.7	3.2	2.1	0.0	1.7	0.5	0.5	0.1
2015/16	0.7	3.1	2.2	0.0	1.0	1.2	1.2	0.1



U.S. Grains Supply and Distribution: Wheat, Corn, Sorghum, Barley, Oats, Rye, and Rice

Thousand Metric Tons/ Hectares

	Area Harvested	Yield	Rough Production	Production	Imports	TY Imports	Exports	TY Exports	Feed Dom. Consumption	Domestic Consumption	Ending Stocks
<b>Wheat</b>											
2013/14	18,345	3	nr	58,105	4,710	4,785	32,001	31,518	6,196	34,287	16,065
2014/15	18,771	3	nr	55,147	4,068	3,987	23,249	22,752	3,326	31,554	20,477
2015/16	19,058	3	nr	55,840	3,266	3,200	21,092	21,500	4,082	32,197	26,294
<b>Corn</b>											
2013/14	35,390	10	nr	351,272	909	727	48,783	50,684	128,023	292,965	31,292
2014/15	33,644	11	nr	361,091	804	809	47,359	46,773	135,227	301,854	43,974
2015/16	32,678	11	nr	345,486	1,270	1,250	41,912	42,000	134,626	302,147	46,671
<b>Sorghum</b>											
2013/14	2,665	4	nr	9,966	2	3	5,362	5,717	2,351	4,127	864
2014/15	2,590	4	nr	10,988	10	27	8,965	9,249	2,043	2,429	468
2015/16	3,177	5	nr	15,158	127	110	8,255	7,600	3,302	5,843	1,655
<b>Barley</b>											
2013/14	1,230	4	nr	4,719	408	522	311	336	1,440	4,775	1,791
2014/15	1,011	4	nr	3,953	513	430	312	292	938	4,234	1,711
2015/16	1,258	4	nr	4,666	435	450	305	300	1,089	4,420	2,087
<b>Oats</b>											
2013/14	408	2	nr	938	1,674	1,866	23	29	1,694	2,757	359
2014/15	419	2	nr	1,019	1,852	1,759	26	23	1,307	2,424	780
2015/16	516	3	nr	1,300	1,637	1,600	29	30	1,710	2,828	860
<b>Rye</b>											
2013/14	113	2	nr	194	234	204	7	6	184	424	7
2014/15	104	2	nr	183	237	262	6	3	164	406	15
2015/16	146	2	nr	292	229	200	5	5	235	481	50
<b>Rice, Milled</b>											
2013/14	999	9	8,615	6,117	734	755	3,005	2,998	nr	3,977	1,025
2014/15	1,187	8	10,079	7,106	783	758	3,207	3,472	nr	4,155	1,552
2015/16	1,042	8	8,724	6,107	762	775	3,175	3,325	nr	3,853	1,393

Notes: Wheat Trade Year (TY) statistics are on July/June years. Barley, corn, sorghum, rye and oats Trade Year (TY) statistics are on Oct/Sept years. Rice Trade Year (TY) statistics are for the subsequent calendar year; 'Imports' and 'Exports' columns contain data on the local marketing year: wheat, barley, oats and rye are June/May; corn and sorghum are Sept/Aug; rice is Aug/July.

Total Wheat and Coarse Grains: Supply and Demand

Millions of Metric Tons/ Hectares

	Area Harvested	Yield	Production	TY Exports	Feed Dom.	Domestic Consumpti	Ending Stocks
Wheat and Coarse Grains							
1986/87	565.2	2.4	1,347.9	174.7	645.9	1,299.7	469.1
1987/88	544.3	2.4	1,285.9	202.2	656.6	1,329.8	422.8
1988/89	541.9	2.2	1,218.1	203.3	619.5	1,301.8	339.1
1989/90	548.2	2.4	1,327.5	208.9	644.5	1,346.3	320.3
1990/91	545.7	2.6	1,417.6	190.1	669.8	1,369.7	368.3
1991/92	543.3	2.5	1,355.7	207.5	653.5	1,366.1	357.9
1992/93	545.9	2.6	1,431.7	205.2	664.1	1,388.3	398.5
1993/94	536.1	2.5	1,356.6	188.2	657.1	1,389.1	366.0
1994/95	534.1	2.6	1,392.8	200.1	670.5	1,395.6	363.2
1995/96	527.2	2.5	1,338.7	187.5	641.8	1,381.6	320.3
1996/97	545.7	2.7	1,490.2	198.3	674.6	1,441.7	368.7
1997/98	535.2	2.8	1,490.8	190.4	685.7	1,443.4	416.1
1998/99	520.2	2.8	1,481.6	198.7	685.4	1,448.7	449.0
1999/00	506.2	2.9	1,465.8	214.0	690.0	1,470.2	444.1
2000/01	509.3	2.8	1,446.9	204.9	700.4	1,472.3	418.7
2001/02	511.7	2.9	1,480.2	208.3	713.7	1,495.8	403.2
2002/03	504.7	2.9	1,445.1	209.2	711.7	1,506.5	341.8
2003/04	511.2	2.9	1,472.9	205.8	718.0	1,535.5	279.1
2004/05	514.8	3.2	1,642.8	214.4	756.2	1,586.1	335.7
2005/06	517.4	3.1	1,599.9	222.5	757.5	1,617.2	318.5
2006/07	519.1	3.1	1,584.6	229.8	749.0	1,630.1	273.0
2007/08	534.6	3.2	1,692.6	244.7	763.7	1,675.7	290.0
2008/09	539.4	3.3	1,791.6	253.6	773.7	1,722.2	359.4
2009/10	533.5	3.4	1,803.7	254.1	781.7	1,767.7	395.4
2010/11	523.4	3.3	1,747.5	250.1	772.9	1,783.5	359.5
2011/12	537.9	3.4	1,853.2	287.1	806.8	1,853.0	359.7
2012/13	532.2	3.4	1,794.5	279.4	807.0	1,813.6	340.6
2013/14	541.4	3.7	1,996.4	327.0	859.9	1,931.7	405.2
2014/15	543.1	3.7	2,024.0	334.6	880.6	1,973.4	455.8
2015/16	545.0	3.7	1,995.9	333.8	896.2	1,971.0	480.7

Notes: Wheat and coarse grains trade data are on July/June years through 1975/76. From 1976/77 to the present, coarse grains data are on an Oct/Sept trade year.

World Wheat and Coarse Grains: Supply and Demand

Millions of Metric Tons/ Hectares

	Area Harvested	Yield	Production	TY Exports	Feed Dom.	Domestic Consumption	Ending Stocks
<b>Wheat</b>							
1993/94	221.1	2.5	558.6	101.7	111.0	552.5	183.3
1994/95	213.4	2.5	523.1	101.5	103.0	541.7	164.7
1995/96	216.7	2.5	537.5	99.2	96.9	545.6	156.6
1996/97	227.1	2.6	581.3	104.0	101.4	572.6	165.3
1997/98	226.4	2.7	610.2	104.5	106.2	576.5	199.0
1998/99	219.2	2.7	590.5	102.0	109.4	579.0	210.5
1999/00	212.7	2.8	587.5	111.9	104.6	587.6	210.3
2000/01	215.6	2.7	583.3	102.1	111.2	587.1	206.5
2001/02	214.5	2.7	583.9	107.9	112.0	586.6	203.7
2002/03	213.9	2.7	569.7	106.5	116.1	603.9	169.5
2003/04	208.0	2.7	555.3	103.5	101.7	588.9	135.9
2004/05	215.8	2.9	626.8	113.2	110.7	606.3	156.4
2005/06	217.5	2.8	618.8	114.1	117.7	621.8	153.4
2006/07	212.3	2.8	596.7	115.3	113.1	616.5	133.6
2007/08	217.1	2.8	612.6	116.0	104.8	617.5	128.7
2008/09	224.1	3.1	683.6	143.2	124.4	643.2	169.1
2009/10	225.6	3.0	687.1	135.3	122.3	653.0	203.2
2010/11	216.9	3.0	649.3	134.1	116.8	653.9	198.7
2011/12	220.9	3.2	696.6	153.8	148.4	697.5	197.8
2012/13	215.8	3.1	658.3	147.2	138.2	679.0	177.1
2013/14	219.8	3.3	715.4	162.4	126.7	698.3	194.1
2014/15	220.9	3.3	725.5	161.4	131.8	704.9	214.6
2015/16	224.3	3.3	732.3	162.3	133.5	709.4	237.6
<b>Coarse Grains</b>							
1993/94	315.0	2.5	798.0	86.5	546.1	836.6	182.7
1994/95	320.8	2.7	869.7	98.6	567.6	853.9	198.5
1995/96	310.5	2.6	801.2	88.3	544.9	836.0	163.7
1996/97	318.6	2.9	908.9	94.3	573.3	869.1	203.5
1997/98	308.8	2.9	880.6	85.8	579.5	866.9	217.1
1998/99	301.0	3.0	891.1	96.7	575.9	869.7	238.6
1999/00	293.6	3.0	878.4	102.1	585.4	882.6	233.8
2000/01	293.7	2.9	863.6	102.8	589.3	885.2	212.3
2001/02	297.2	3.0	896.3	100.4	601.6	909.1	199.5
2002/03	290.9	3.0	875.4	102.7	595.6	902.6	172.3
2003/04	303.2	3.0	917.5	102.3	616.3	946.7	143.1
2004/05	299.0	3.4	1,016.0	101.2	645.5	979.8	179.4
2005/06	299.9	3.3	981.1	108.4	639.8	995.4	165.1
2006/07	306.8	3.2	988.0	114.5	635.9	1,013.6	139.5
2007/08	317.5	3.4	1,080.0	128.7	659.0	1,058.2	161.3
2008/09	315.3	3.5	1,107.9	110.4	649.3	1,078.9	190.3
2009/10	307.9	3.6	1,116.7	118.8	659.4	1,114.8	192.2
2010/11	306.5	3.6	1,098.2	116.0	656.1	1,129.6	160.8
2011/12	317.0	3.6	1,156.5	133.4	658.4	1,155.5	161.9
2012/13	316.5	3.6	1,136.2	132.2	668.8	1,134.5	163.5
2013/14	321.6	4.0	1,281.0	164.6	733.2	1,233.4	211.2
2014/15	322.2	4.0	1,298.5	173.3	748.9	1,268.5	241.2
2015/16	320.8	3.9	1,263.6	171.4	762.7	1,261.6	243.1

Notes: Wheat and coarse grains trade data are on July/June years through 1975/76. From 1976/77 to the present, coarse grains data are on an Oct/Sept trade year.

## World Corn and Barley: Supply and Demand

Millions of Metric Tons/ Hectares

	Area Harvested	Yield	Production	TY Exports	Feed Dom.	Domestic Consumption	Ending Stocks
<b>Corn</b>							
1993/94	130.8	3.6	476.0	57.4	342.0	509.3	129.4
1994/95	135.2	4.1	559.4	71.9	371.6	535.5	153.3
1995/96	135.0	3.8	516.5	64.8	365.3	536.6	133.3
1996/97	141.5	4.2	593.0	66.6	387.9	560.0	166.3
1997/98	136.3	4.2	574.4	63.1	400.6	573.5	167.2
1998/99	139.0	4.4	606.1	68.7	404.4	582.0	191.4
1999/00	138.9	4.4	608.4	72.0	422.6	605.3	194.4
2000/01	137.1	4.3	591.8	75.9	427.4	610.9	175.3
2001/02	137.1	4.4	601.8	72.7	436.4	625.6	151.5
2002/03	137.8	4.4	603.9	76.8	433.4	628.6	126.8
2003/04	141.6	4.4	627.5	79.0	445.8	649.7	104.6
2004/05	145.3	4.9	716.9	76.0	476.0	690.4	131.1
2005/06	145.4	4.8	700.7	82.5	478.9	708.3	123.5
2006/07	150.5	4.8	716.3	91.3	479.7	730.9	108.9
2007/08	160.2	5.0	795.5	98.2	500.6	776.5	127.9
2008/09	158.7	5.0	799.8	83.6	481.4	784.4	143.3
2009/10	158.3	5.2	824.8	92.7	492.3	827.8	140.3
2010/11	164.5	5.1	835.5	91.7	502.8	852.8	123.1
2011/12	172.2	5.2	889.8	103.7	507.8	885.0	127.9
2012/13	177.5	4.9	869.5	100.5	518.3	864.6	132.7
2013/14	181.2	5.5	991.4	130.2	570.3	949.3	174.8
2014/15	178.6	5.7	1,009.7	127.9	582.7	979.4	205.1
2015/16	177.1	5.5	969.6	132.2	597.0	967.8	207.0
<b>Barley</b>							
1993/94	73.2	2.3	169.0	18.8	123.8	169.1	34.9
1994/95	72.2	2.2	160.7	15.3	120.9	165.6	30.0
1995/96	66.4	2.1	141.2	13.4	107.8	150.7	20.5
1996/97	64.3	2.4	153.2	17.9	106.3	149.5	24.1
1997/98	63.8	2.4	153.9	12.8	104.1	145.8	32.2
1998/99	56.7	2.4	136.0	17.8	99.5	139.3	29.0
1999/00	52.1	2.4	127.4	17.8	94.0	132.5	23.9
2000/01	52.9	2.5	133.0	16.3	94.6	134.3	22.6
2001/02	55.7	2.6	143.4	17.2	95.5	136.8	29.2
2002/03	54.7	2.5	134.3	16.3	94.7	135.9	27.6
2003/04	58.4	2.4	142.7	14.8	103.1	146.8	23.5
2004/05	57.4	2.7	152.1	17.0	100.0	142.5	33.1
2005/06	55.2	2.5	136.2	17.4	97.3	141.0	28.3
2006/07	56.3	2.4	136.8	14.6	98.4	143.6	21.5
2007/08	55.7	2.4	132.7	18.5	91.0	133.7	20.6
2008/09	55.0	2.8	154.9	18.2	100.4	143.8	31.6
2009/10	54.2	2.8	151.0	17.3	101.4	145.1	37.4
2010/11	47.1	2.6	123.0	15.2	91.3	136.1	24.3
2011/12	49.2	2.7	133.4	21.4	91.7	135.0	22.7
2012/13	49.9	2.6	128.8	22.1	88.6	131.0	20.4
2013/14	50.5	2.9	144.4	23.8	97.2	140.8	24.0
2014/15	49.5	2.8	140.9	30.1	96.6	140.9	24.1
2015/16	50.0	2.9	146.1	26.3	98.7	146.0	24.2

Notes: Coarse grains trade data are on July/June years through 1975/76. From 1976/77 to the present, coarse grains data are on an Oct/Sept trade year.

## World Rice: Supply and Demand

Millions of Metric Tons/ Hectares

	Area Harvested	Yield	Rough Productio n	Productio n	TY Exports	Domestic Consumpti	Ending Stocks
Rice, Milled							
1986/87	144.8	3.2	464.6	316.1	12.9	310.4	103.3
1987/88	141.4	3.3	464.8	315.1	11.4	313.1	105.3
1988/89	146.6	3.3	490.8	332.1	14.0	325.7	111.7
1989/90	147.8	3.5	510.4	345.3	11.7	336.3	120.6
1990/91	147.0	3.5	519.4	351.4	12.3	345.3	126.7
1991/92	147.5	3.5	522.8	353.2	14.4	353.2	126.7
1992/93	146.5	3.6	524.2	354.0	14.9	357.5	123.2
1993/94	145.3	3.6	526.1	354.7	16.6	358.9	119.0
1994/95	147.3	3.7	540.0	364.1	20.8	365.5	117.6
1995/96	148.4	3.7	547.3	368.8	19.7	368.3	118.1
1996/97	150.1	3.8	565.3	381.4	18.9	379.2	120.3
1997/98	151.7	3.8	575.2	387.4	27.6	380.0	127.7
1998/99	153.1	3.8	587.0	394.9	24.8	388.7	134.0
1999/00	155.9	3.9	608.8	409.3	22.8	400.3	143.1
2000/01	152.4	3.9	594.1	399.3	24.3	395.6	146.7
2001/02	151.3	3.9	594.3	399.5	27.9	413.3	132.9
2002/03	146.9	3.8	563.1	378.2	27.6	408.1	103.0
2003/04	149.3	3.9	585.4	392.5	27.3	413.8	81.7
2004/05	151.8	3.9	596.4	400.8	28.9	408.5	74.0
2005/06	153.9	4.0	622.2	417.8	29.0	415.4	76.5
2006/07	154.5	4.0	625.0	420.1	31.8	421.2	75.4
2007/08	154.8	4.2	643.5	433.6	29.5	428.1	80.9
2008/09	158.2	4.2	668.7	449.4	29.4	437.6	92.6
2009/10	155.8	4.2	656.2	440.7	31.8	438.4	95.0
2010/11	158.4	4.2	672.1	450.4	36.5	445.3	100.0
2011/12	160.7	4.3	697.2	467.6	40.0	460.8	106.8
2012/13	158.5	4.4	704.5	472.5	39.5	468.7	110.6
2013/14	161.7	4.4	713.4	478.4	43.4	481.6	107.5
2014/15	160.7	4.4	713.8	478.8	42.6	482.6	103.7
2015/16	157.7	4.5	702.2	471.1	41.7	484.2	90.5

Notes: Stocks, exports and consumption are expressed on a milled basis in marketing years.

---

## **ENDNOTES TO GRAIN: WORLD MARKETS AND TRADE**

### **REGIONAL TABLES**

**North America:** Canada, Mexico, the United States.

**Central America:** Belize, Costa Rica, El Salvador, Guatemala, Honduras, Nicaragua, Panama.

**Caribbean:** Anguilla, Antigua and Barbuda, Aruba, Bahamas, Barbados, Bermuda, British Virgin Islands, Cayman Islands, Cuba, Dominica, Dominican Republic, French West Indies, Grenada, Guadeloupe, Haiti, Jamaica and Dep, Leeward-Windward Islands, Martinique, Montserrat, Netherlands Antilles, Puerto Rico, Kitts and Nevis, St. Lucia, St. Vincent and the Grenadines, Trinidad and Tobago, Turks and Caicos Islands, Virgin Islands of the U.S.

**South America:** Argentina, Bolivia, Brazil, Chile, Colombia, Ecuador, Falkland Islands (Islas Malvinas), French Guiana, Guyana, Paraguay, Peru, Suriname, Uruguay, Venezuela.

**EU:** Austria, Belgium/Luxembourg, Bulgaria, Croatia, Cyprus, Czech Republic, Denmark, Estonia, Finland, France, Germany, Greece, Hungary, Ireland, Italy, Latvia, Lithuania, Malta, Netherlands, Poland, Portugal, Romania, Slovakia, Slovenia, Spain, Sweden, United Kingdom.

**Other Europe:** Albania, Azores, Bosnia and Herzegovina, Former Yugoslavia, Gibraltar, Iceland, Macedonia, Montenegro, Norway, Serbia, Switzerland.

**Former Soviet Union:** Armenia, Azerbaijan, Belarus, Georgia, Kazakhstan, Kyrgyzstan, Moldova, Russia, Tajikistan, Turkmenistan, Ukraine, Uzbekistan.

**Middle East:** Bahrain, Iran, Iraq, Israel, Jordan, Kuwait, Lebanon, Oman, Qatar, Saudi Arabia, Syria, Turkey, United Arab Emirates, Yemen.

**North Africa:** Algeria, Egypt, Libya, Morocco, Tunisia.

**Sub-Saharan Africa:** all African countries except North Africa.

**East Asia:** China, Hong Kong, Japan, South Korea, North Korea, Macau, Mongolia, Taiwan.

**South Asia:** Afghanistan, Bangladesh, Bhutan, India, Nepal, Pakistan, Sri Lanka, Maldives.

**Southeast Asia:** Brunei, Burma, Cambodia, Indonesia, Laos, Malaysia, Philippines, Singapore, Thailand, Vietnam.

**Oceania:** Australia, Fiji, New Zealand, Papua New Guinea.

---

## **OTHER NOTES**

**Local Marketing Years (LMY):** LMY refers to the 12-month period at the onset of the main harvest, when the crop is marketed (i.e., consumed, traded, or stored). The year first listed begins a country's LMY for that commodity (2015/16 starts in 2015); except for summer grains in certain Southern Hemisphere countries and for rice in selected countries, where the second year begins the LMY (2015/16 starts in 2016). Key exporter LMY's are:

<b>Wheat</b>	<b>Corn</b>	<b>Barley</b>	<b>Sorghum</b>
Argentina (Dec/Nov)	Argentina (Mar/Feb)	Australia (Nov/Oct)	Argentina (Mar/Feb)
Australia (Oct/Sep)	Brazil (Mar/Feb)	Canada (Aug/Jul)	Australia (Mar/Feb)
Canada (Aug/Jul)	China (Oct/Sep)	European Union (Jul/Jun)	United States (Sep/Aug)
China (Jul/Jun)	South Africa (May/Apr)	Russia (Jul/Jun)	
European Union (Jul/Jun)	United States (Sep/Aug)	Ukraine (Jul/Jun)	
India (Apr/Mar)		United States (Jun/May)	
Kazakhstan (Jul/Jun)			
Russia (Jul/Jun)			
Turkey (Jun/May)			
Ukraine (Jul/Jun)			
United States (Jun/May)			

For a complete list of local marketing years, please see the FAS website (<http://www.fas.usda.gov/psdonline/psdAvailability.aspx>).

**Stocks:** Unless otherwise stated, stock data are based on an aggregate of differing local marketing years and should not be construed as representing world stock levels at a fixed point in time.

**Consumption:** World totals for consumption reflect total utilization, including food, seed, industrial, feed, and waste; as well as differences in local marketing year imports and local marketing year exports. Consumption statistics for regions and individual countries, however, reflect food, seed, industrial, feed, and waste only.

**Trade:** All PSD tables are balanced on the different local marketing years. All trade tables contain Trade Year (TY) data which puts all countries on a uniform, 12-month period for analytical comparisons: wheat is July/June; coarse grains, corn, barley, sorghum, oats, and rye are Oct/Sept; and rice is calendar year.

**EU Consolidation:** The trade figures starting from 1999/00 represent the European Union (Croatia plus the former EU-27) and exclude all intra-trade. For the years 1960/61 through 1998/99, figures are the EU-15 and also exclude all intra-trade. EU-15 member states' data for grains are no longer maintained in the official USDA database. Data for the individual NMS-10, plus Bulgaria, Romania, and Croatia, exists only prior to 1999/00.

**Statistics:** (1) Wheat trade statistics include wheat, flour, and selected pasta products on a grain equivalent basis. (2) Rice trade statistics include rough, brown, milled, and broken on a milled equivalent basis. (3) Coarse grains statistics include corn, barley, sorghum, oats, rye, millet, and mixed grains but exclude trade in barley malt, millet, and mixed grains.

---

**Unaccounted:** This term includes grain in transit, reporting discrepancies in some countries, and trade to countries outside the USDA database.

The Global Commodity Analysis Division, Office of Global Analysis, Foreign Agricultural Service, USDA, Washington, DC 20250, prepared this circular. Information is gathered from official statistics of foreign governments and other foreign source materials, reports of U.S. agricultural attachés and Foreign Service officers, office research, and related information. Further information may be obtained by writing the Division or telephoning (202) 720-3448.

**Note:** The previous report in this series was Grain: World Markets and Trade February 2016. For further details on world grain production, please see World Agricultural Production March 2016.

This circular is available in its entirety on the Internet via the Foreign Agricultural Service Home Page. The address is: <http://www.fas.usda.gov>

Questions may be directed to the following staff:

Teresa McKeivier	(202) 690-1151	<a href="mailto:Teresa.McKeivier@fas.usda.gov">Teresa.McKeivier@fas.usda.gov</a>	Wheat
Daniel Archibald	(202) 720-9432	<a href="mailto:Dan.Archibald@fas.usda.gov">Dan.Archibald@fas.usda.gov</a>	Wheat
Rachel Trego	(202) 720-1073	<a href="mailto:Rachel.Trego@fas.usda.gov">Rachel.Trego@fas.usda.gov</a>	Rice
Kyle Bonsu	(202) 260-8370	<a href="mailto:Kyle.Bonsu@fas.usda.gov">Kyle.Bonsu@fas.usda.gov</a>	Rice
Yoonhee Macke	(202) 690-4199	<a href="mailto:Yoonhee.Macke@fas.usda.gov">Yoonhee.Macke@fas.usda.gov</a>	Coarse Grains
Andrew Sowell	(202) 720-0262	<a href="mailto:Andrew.Sowell@fas.usda.gov">Andrew.Sowell@fas.usda.gov</a>	Coarse Grains
Barrett Bumpas	(202) 692-0337	<a href="mailto:Barrett.Bumpas@fas.usda.gov">Barrett.Bumpas@fas.usda.gov</a>	Coarse Grains