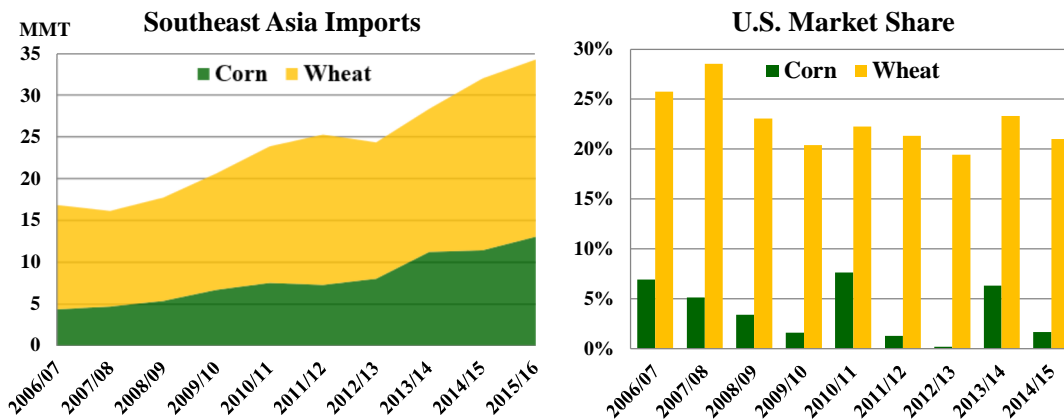




Grain: World Markets and Trade

Southeast Asian Wheat and Corn Imports Double in Past Decade As U.S. Market Share Slides



Since 2006/07, combined imports of wheat and corn by Southeast Asian countries* more than doubled, fueled by growing populations and stable economic growth. Consumption is up for both food and feed as regional diets increasingly incorporate animal protein and western-style foods. Wheat food consumption has increased nearly 50 percent in the last decade, while feed use of wheat has more than tripled, with wheat being a preferred feed for aquaculture. With negligible production of wheat, the region is entirely reliant on imports. Indonesia, the Philippines, and Thailand are the primary wheat importers. Corn feed consumption is up 70 percent during the last decade. For much of the region, corn production largely satisfies demand. Malaysia is the only major importer that is largely dependent on imports, while Indonesia and Vietnam both produce and import large amounts of corn.

The U.S. market share is trending downward for both commodities. The United States struggles to compete with Canadian and Australian milling wheat on price and proximity, respectively. Ukraine and Argentina primarily meet the demand for feed wheat. Brazil and Argentina dominate the Southeast Asian corn market, supplying over 90 percent of imports. However, Malaysia and Vietnam, the largest importers of corn, are signatories of the Trans-Pacific Partnership. Once implemented, the agreement could boost U.S. competitiveness in those countries for both commodities as tariffs are gradually reduced or eliminated.

*For list of countries, see *Endnotes to Grain: World Markets and Trade*

For email subscription, click here to register: <https://public.govdelivery.com/accounts/USDAFAS/subscriber/new>

TABLE OF CONTENTS

World Markets and Trade: Commentary and Current Data	
Wheat	4
Rice	9
Coarse Grains.....	15
Historical Data Series for Selected Regions and Countries	36
Endnotes to Grain: World Markets and Trade	55

The Foreign Agricultural Service (FAS) updates its production, supply and distribution (PSD) database for cotton, oilseeds, and grains at 12:00 p.m. on the day the *World Agricultural Supply and Demand Estimates* (WASDE) report is released. This circular is released by 12:15 p.m.

To download the tables in the publication, go to Production, Supply and Distribution Database (PSD Online): (<http://apps.fas.usda.gov/psdonline/psdHome.aspx>), scroll down to Reports, and Click the plus sign [+] next to Grains.

FAS Reports and Databases:

Current *World Markets and Trade* and *World Agricultural Production* Reports:

<http://apps.fas.usda.gov/psdonline/psdDataPublications.aspx>

Archives *World Markets and Trade* and *World Agricultural Production* Reports:

<http://usda.mannlib.cornell.edu/MannUsda/viewTaxonomy.do?taxonomyID=7>

Production, Supply and Distribution Database (PSD Online):

<http://apps.fas.usda.gov/psdonline/psdHome.aspx>

Global Agricultural Trade System (U.S. Exports and Imports):

<http://apps.fas.usda.gov/gats/default.aspx>

Export Sales Report:

<http://apps.fas.usda.gov/esrquery/>

Global Agricultural Information Network (Agricultural Attaché Reports):

<http://gain.fas.usda.gov/Pages/Default.aspx>

Other USDA Reports:

World Agricultural Supply and Demand Estimates (WASDE):

<http://www.usda.gov/oce/commodity/wasde/>

Economic Research Service:

<http://www.ers.usda.gov/topics/crops>

National Agricultural Statistics Service:

<http://www.nass.usda.gov/Publications/>

All Grain Summary Comparison
Million Metric Tons

Marketing Year	Wheat			Rice, Milled			Corn			
	2013/ 14	2014/ 15	2015/ 16	2013/ 14	2014/ 15	2015/ 16	2013/ 14	2014/ 15	2015/ 16	
Production										
United States	(Jun-May)	58.1	55.1	55.8	6.1	7.1	6.1	351.3	361.1	345.5
Other		656.8	670.3	677.3	472.3	471.7	464.5	639.2	651.7	626.6
World Total		714.9	725.4	733.1	478.4	478.8	470.6	990.5	1,012.8	972.1
Domestic Consumption										
United States	(Jun-May)	34.3	31.6	31.9	4.0	4.2	3.9	293.0	301.9	301.5
Other		656.0	667.7	674.2	473.8	475.4	478.2	648.7	660.2	676.9
World Total		690.3	699.3	706.1	477.8	479.6	482.1	941.7	962.1	978.4
Ending Stocks										
United States	(Jun-May)	16.1	20.5	26.6	1.0	1.6	1.4	31.3	44.0	47.3
Other		177.8	194.3	212.7	106.4	102.0	88.8	143.7	163.6	161.6
World Total		193.9	214.8	239.3	107.4	103.6	90.2	175.0	207.6	208.9
TY Imports										
United States	(Jun-May)	4.8	4.0	3.2	0.8	0.8	0.8	0.7	0.8	1.3
Other		155.5	154.4	156.8	40.3	38.6	39.1	124.4	121.2	127.7
World Total		160.3	158.4	160.0	41.1	39.4	39.9	125.1	122.0	129.0
TY Exports										
United States	(Jun-May)	31.5	22.8	21.3	3.0	3.5	3.3	50.7	46.8	42.0
Other		130.9	138.6	141.2	41.1	39.2	38.4	79.7	81.2	91.8
World Total		162.4	161.4	162.5	44.1	42.7	41.7	130.4	128.0	133.8

Note: Consumption in this table has not been adjusted for differences in marketing year imports and exports and therefore differs from global totals shown elsewhere. Marketing years for U.S. grains are: Wheat (Jun-May), Rice (Aug-Jul), Corn (Sep-Aug). 'Marketing Year' column is germane for U.S. wheat only.

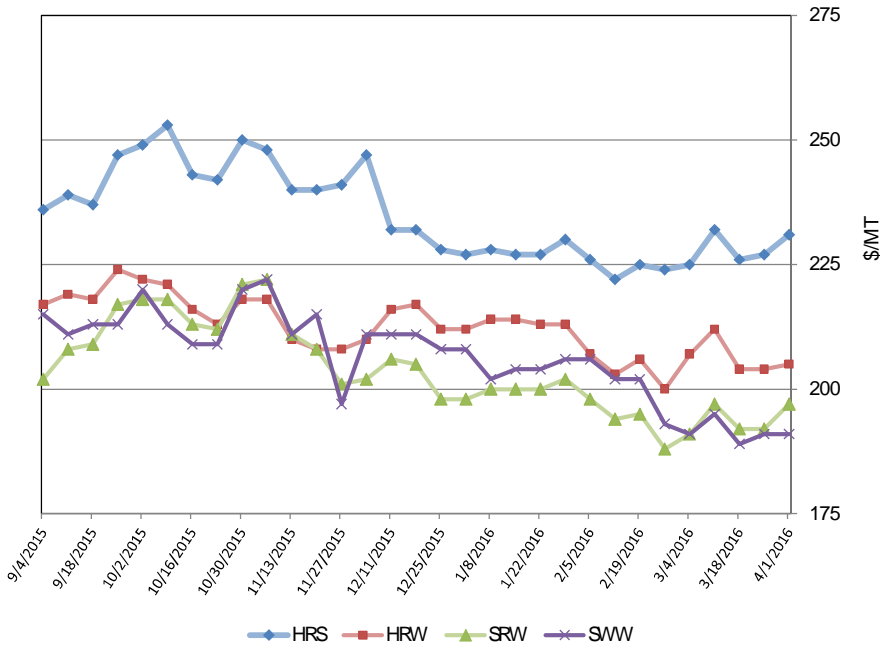
WHEAT: WORLD MARKETS AND TRADE

OVERVIEW

World wheat production for 2015/16 is up as larger crops in Argentina and the EU more than offset reductions in Ethiopia and Pakistan. Global trade is up fractionally this month, with upward revisions for Algeria, China, and others offset by diminished imports for Brazil, Iran, and Sudan. Exports for Argentina and Kazakhstan are raised, while the EU is revised downward. U.S. exports are also trimmed, and the season-average farm price is lowered from last month.

U.S. PRICES:

U.S. Weekly FOB Export Bids



Domestic: Prices across most U.S. wheat classes rose through early March on weather concerns in the southern U.S. plains. Smaller-than-anticipated U.S. plantings at month's end preserved the upward trend for most classes. While Hard Red Winter (HRW) slipped fractionally \$2/ton to \$205, both Hard Red Spring (HRS) and Soft Red Winter (SRW) ended \$6/ton up at \$231 and \$205, respectively. Soft White Wheat (SSW) ended the month unchanged at \$197.

TRADE CHANGES IN 2015/16

Selected Exporters

- **Argentina** is raised 500,000 tons to 7.5 million on a larger crop and a continuing strong pace of shipments, particularly to Southeast Asian markets.
- The **European Union** is cut 500,000 tons to 32.0 million on account of lagging export licenses and greater domestic usage.
- **Iran** is slashed 300,000 tons to 200,000 due to weak demand and increased regional competition.
- **Kazakhstan** is lifted 500,000 tons to 7.0 million on a steady pace of shipments and a competitive advantage over other regional exporters due to a weak currency.
- **Turkey** is elevated 300,000 tons to 5.0 million, a quarter-century high, based on the robust pace of flour and products trade.
- **United States** is trimmed 200,000 tons to 21.3 million owing to the slow pace of new crop sales. (The marketing year estimate is unchanged)

Selected Importers

- **Algeria** is boosted 400,000 tons to 8.1 million due to a strong import pace. The country is taking advantage of low world prices to build its stocks of milling wheat.
- **Brazil** is down 500,000 tons to 5.8 million on account of slow pace to date and static domestic consumption.
- **China** is raised 500,000 tons to 3.0 million due to persistent demand for premium quality milling wheat.
- **Iran** is lowered 700,000 tons to 3.3 million based on a significantly weaker pace of imports resulting from a good domestic crop and government policy. The policy restricts imports of wheat effective in the new Iranian calendar year, which began March 20.
- **Sudan** is reduced 500,000 tons to 2.3 million on a very sluggish pace to date as the country grapples with low growth and high inflation.
- **Syria** is elevated 300,000 tons to 1.3 million due to greater-than-expected trade to date.
- **Thailand** is boosted 300,000 tons to 3.8 million on account of strong shipments to date, particularly from Ukraine and Argentina.

World Wheat, Flour, and Products Trade
July/ June Year, Thousand Metric Tons

	2011/ 12	2012/ 13	2013/ 14	2014/ 15	2015/ 16 Mar	2015/ 16 Apr
TY Exports						
Argentina	11,951	7,450	1,675	4,200	7,000	7,500
Australia	23,031	21,269	18,339	16,575	16,500	16,500
Brazil	1,860	1,753	81	1,688	1,300	1,300
Canada	17,603	18,584	22,156	24,825	22,000	22,000
European Union	16,728	22,786	32,032	35,418	32,500	32,000
Kazakhstan	11,069	6,801	8,000	5,507	6,500	7,000
Mexico	790	729	1,322	1,104	1,100	1,100
Russia	21,627	11,308	18,609	22,800	23,000	23,000
Turkey	3,678	3,583	4,293	4,134	4,700	5,000
Ukraine	5,436	7,190	9,755	11,269	15,500	15,500
Others	11,826	18,063	14,659	11,177	10,742	10,342
Subtotal	125,599	119,516	130,921	138,697	140,842	141,242
United States	28,142	27,734	31,518	22,752	21,500	21,300
World Total	153,741	147,250	162,439	161,449	162,342	162,542
TY Imports						
Afghanistan	2,200	1,600	2,050	2,000	2,200	2,200
Algeria	6,500	6,484	7,484	7,257	7,700	8,100
Bangladesh	2,039	2,725	3,354	3,915	3,800	4,000
Brazil	7,053	7,547	7,061	5,869	6,300	5,800
China	2,933	2,960	6,773	1,926	2,500	3,000
Egypt	11,616	8,343	10,122	11,063	11,000	11,000
Ethiopia	1,550	1,344	670	1,100	2,400	2,400
European Union	7,362	5,276	3,976	5,975	6,300	6,300
Indonesia	6,457	7,146	7,391	7,478	8,100	8,100
Iran	2,400	5,600	6,600	5,006	4,000	3,300
Iraq	3,784	3,948	3,246	2,253	2,700	2,700
Japan	6,354	6,598	6,123	5,878	5,700	5,700
Korea, South	5,188	5,439	4,288	3,942	4,500	4,500
Mexico	5,020	3,823	4,639	4,476	4,400	4,400
Morocco	3,671	3,825	3,928	4,086	3,000	3,000
Nigeria	3,901	4,168	4,580	4,244	4,400	4,400
Philippines	4,022	3,620	3,476	5,055	4,300	4,300
Saudi Arabia	2,904	1,921	3,429	3,487	3,300	3,300
South Africa	1,542	1,558	1,849	1,901	2,000	2,000
Sudan	2,360	1,793	2,664	2,632	2,800	2,300
Thailand	2,646	1,840	1,684	3,488	3,500	3,800
Turkey	4,413	3,312	4,149	5,960	3,800	3,800
Uzbekistan	2,698	1,863	2,224	2,230	2,400	2,400
Vietnam	2,711	1,671	2,157	2,296	2,600	2,600
Yemen	2,667	3,207	3,425	3,245	3,300	3,300
Others	44,570	43,569	48,153	47,635	49,836	50,136
Subtotal	148,561	141,180	155,495	154,397	156,836	156,836
Unaccounted	2,143	2,594	2,159	3,065	2,306	2,506
United States	3,037	3,476	4,785	3,987	3,200	3,200
World Total	153,741	147,250	162,439	161,449	162,342	162,542

TY= Trade Year, see Endnotes.

World Wheat Production, Consumption, and Stocks
Local Marketing Years, Thousand Metric Tons

	2011/ 12	2012/ 13	2013/ 14	2014/ 15	2015/ 16 Mar	2015/ 16 Apr
Production						
Argentina	15,500	9,300	10,500	12,500	11,000	11,300
Australia	29,905	22,856	25,303	23,076	24,500	24,500
Canada	25,288	27,205	37,530	29,420	27,600	27,600
China	117,400	121,023	121,930	126,208	130,190	130,190
Egypt	8,400	8,500	8,250	8,300	8,100	8,100
European Union	138,182	133,949	144,585	156,828	158,457	160,000
India	86,874	94,882	93,506	95,850	86,530	86,530
Iran	12,400	13,800	14,500	13,000	14,000	14,000
Kazakhstan	22,732	9,841	13,941	12,996	13,748	13,748
Morocco	6,018	3,878	6,934	5,100	8,000	8,000
Pakistan	25,214	23,473	24,211	25,979	25,478	25,100
Russia	56,240	37,720	52,091	59,080	61,000	61,044
Turkey	18,800	16,000	18,750	15,250	19,500	19,500
Ukraine	22,324	15,761	22,278	24,750	27,250	27,274
Uzbekistan	6,300	6,700	6,800	7,150	7,200	7,200
Others	51,036	52,097	55,710	54,807	53,923	53,218
Subtotal	642,613	596,985	656,819	670,294	676,476	677,304
United States	54,244	61,298	58,105	55,147	55,840	55,840
World Total	696,857	658,283	714,924	725,441	732,316	733,144
Total Consumption						
Algeria	8,950	9,450	9,850	10,050	10,250	10,250
Brazil	11,200	10,900	11,400	10,700	10,600	10,200
Canada	9,867	9,501	9,418	9,139	8,800	8,800
China	122,500	125,000	116,500	116,500	114,000	112,000
Egypt	18,600	18,700	18,500	19,100	19,200	19,200
European Union	127,234	119,250	117,300	123,500	125,750	128,800
India	81,408	83,824	93,848	93,130	90,030	90,030
Indonesia	6,250	6,950	7,165	7,365	7,950	7,950
Iran	15,200	16,000	17,000	17,500	18,000	18,000
Morocco	8,800	8,300	9,000	9,000	9,800	9,800
Pakistan	23,100	23,900	24,100	24,500	24,600	24,400
Russia	38,000	33,550	34,100	35,500	37,000	37,000
Turkey	18,100	17,650	17,750	17,500	18,000	18,000
Ukraine	14,950	11,400	11,500	12,000	12,500	12,500
Uzbekistan	7,800	8,000	8,400	8,900	9,300	9,300
Others	145,734	146,648	150,219	153,331	159,005	157,932
Subtotal	665,827	641,341	663,600	673,001	677,177	676,754
United States	31,962	37,768	34,287	31,554	32,197	31,932
World Total	697,789	679,109	697,887	704,555	709,374	708,686
Ending Stocks						
China	55,946	53,960	65,274	76,105	93,795	96,295
European Union	13,522	10,711	9,940	13,825	20,160	19,325
India	19,950	24,200	17,830	17,192	13,200	13,192
Iran	825	5,086	7,221	7,821	7,321	7,121
Morocco	3,524	2,674	4,321	4,269	5,070	5,219
Russia	10,899	4,933	5,177	6,285	7,982	8,029
Ukraine	5,363	2,579	3,670	5,178	4,478	4,502
Others	67,494	53,227	64,447	63,679	59,290	59,047
Subtotal	177,523	157,370	177,880	194,354	211,296	212,730
United States	20,211	19,538	16,065	20,477	26,294	26,559
World Total	197,734	176,908	193,945	214,831	237,590	239,289

Regional Wheat Imports, Production, Consumption, and Stocks

Thousand Metric Tons

	2011/ 12	2012/ 13	2013/ 14	2014/ 15	Mar 2015/ 16	Apr 2015/ 16
TY Imports						
North America	8,554	7,784	9,866	8,953	8,085	8,085
Central America	1,666	1,654	1,833	1,834	1,795	1,795
South America	13,779	14,422	14,866	13,132	14,115	13,615
European Union - 28	7,362	5,276	3,976	5,975	6,300	6,300
Other Europe	1,911	1,632	1,858	1,760	1,895	1,895
Former Soviet Union - 12	8,022	7,229	7,472	7,675	7,690	7,690
Middle East	23,023	24,220	28,374	26,905	24,750	24,350
North Africa	24,821	21,990	25,218	25,193	25,100	25,500
Sub-Saharan Africa	19,088	18,531	20,492	20,945	23,355	22,855
East Asia	16,865	17,352	19,463	14,113	15,110	15,610
South Asia	5,428	5,308	6,721	8,149	7,751	7,951
Southeast Asia	17,956	16,294	17,101	20,541	20,875	21,175
Others	3,123	2,964	3,040	3,209	3,215	3,215
Total	151,598	144,656	160,280	158,384	160,036	160,036
Production						
North America	83,160	91,734	99,012	88,254	87,200	87,200
South America	26,131	18,011	19,762	22,722	20,345	20,643
European Union - 28	138,182	133,949	144,585	156,828	158,457	160,000
Other Europe	3,597	3,431	4,059	3,856	4,132	4,032
Former Soviet Union - 12	114,985	77,802	103,885	112,735	117,528	117,596
Middle East	39,285	36,884	41,708	35,414	40,855	40,830
North Africa	18,584	17,328	19,656	17,010	20,000	19,910
Sub-Saharan Africa	6,234	6,716	7,154	7,144	6,871	6,414
East Asia	118,775	122,490	123,248	127,648	131,564	131,563
South Asia	117,450	126,412	125,917	130,154	120,238	119,840
Oceania	30,288	23,345	25,751	23,490	24,925	24,925
Others	186	181	187	186	201	191
Total	696,857	658,283	714,924	725,441	732,316	733,144
Domestic Consumption						
North America	49,429	53,894	50,355	47,543	47,997	47,732
South America	26,085	26,212	27,126	26,862	27,189	26,789
European Union - 28	127,234	119,250	117,300	123,500	125,750	128,800
Other Europe	4,871	4,721	4,757	4,810	4,890	4,890
Former Soviet Union - 12	79,970	71,725	72,750	75,860	78,105	78,105
Middle East	56,723	56,636	58,717	58,112	59,820	60,120
North Africa	40,927	41,290	42,425	42,651	43,725	43,725
Sub-Saharan Africa	23,261	23,993	26,331	26,838	29,750	28,387
East Asia	137,357	140,071	130,201	129,378	127,151	125,151
South Asia	115,930	121,007	132,041	132,330	130,006	129,806
Southeast Asia	16,665	16,515	16,560	19,265	20,405	20,395
Oceania	7,824	8,111	8,280	8,569	8,600	8,600
Others	3,379	3,366	3,494	3,551	3,594	3,594
Total	689,655	686,791	690,337	699,269	706,982	706,094
Ending Stocks						
North America	26,718	24,950	26,820	28,113	31,242	31,540
South America	4,204	3,538	6,834	6,756	4,199	3,924
European Union - 28	13,522	10,711	9,940	13,825	20,160	19,325
Other Europe	1,439	1,057	941	1,074	1,321	1,036
Former Soviet Union - 12	26,373	14,269	15,688	20,045	21,270	20,871
Middle East	12,395	14,039	18,540	18,416	18,132	18,146
North Africa	14,285	11,704	13,683	12,628	12,872	13,463
Sub-Saharan Africa	2,315	2,399	2,837	2,861	2,808	2,848
East Asia	58,935	57,209	68,307	79,352	97,620	99,839
South Asia	25,129	27,995	21,661	23,167	19,223	19,397
Southeast Asia	4,615	3,718	3,466	3,892	3,665	3,812
Oceania	7,432	4,978	4,861	4,289	4,719	4,729
Others	372	341	367	413	359	359
Total	197,734	176,908	193,945	214,831	237,590	239,289

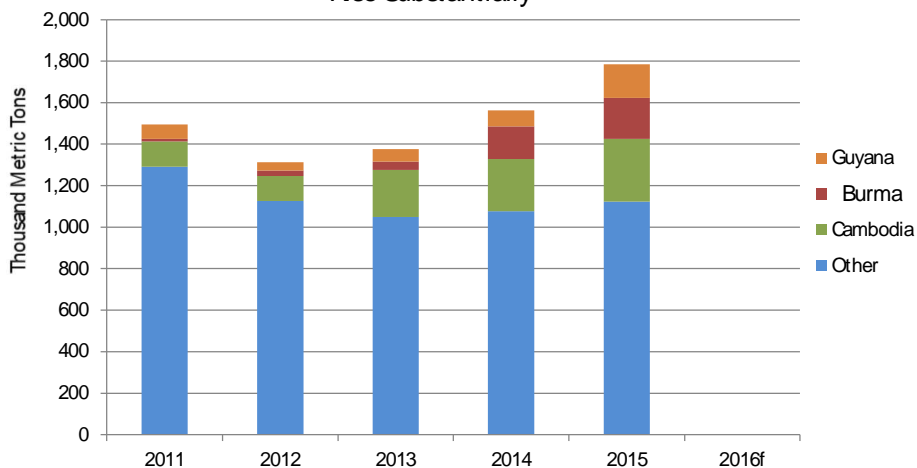
NOTES: Regional definitions appear on last page of this circular. Imports are reported on a trade year basis. All other data are reported using local marketing years.

RICE: WORLD MARKETS AND TRADE

OVERVIEW

Global production for 2015/16 is cut from last month, mostly on crop reductions for Brazil, Pakistan, and the Philippines. Trade is revised down slightly, as higher exports for India are more than offset by declines for Pakistan and Egypt, and smaller imports for Turkey. Global stocks are revised lower this month largely on a reduction for Japan (primarily due to higher consumption). The U.S. season-average farm price is lowered.

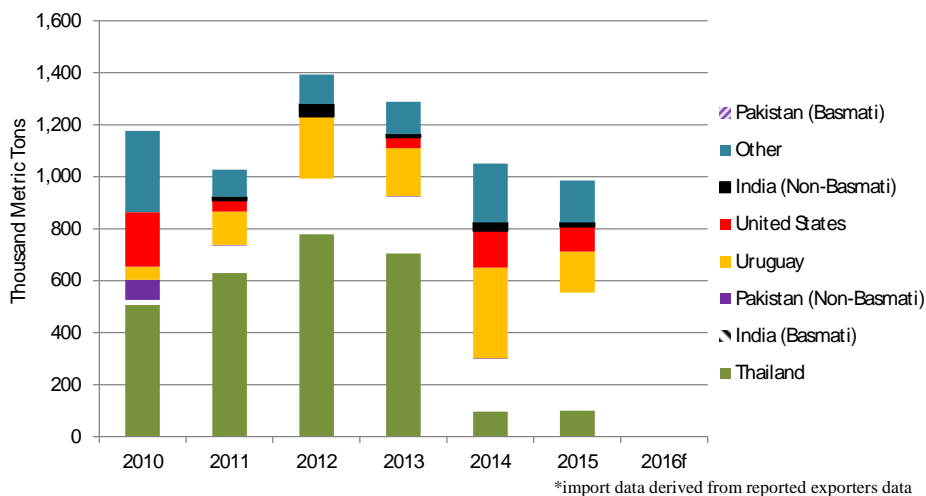
EU Imports from Cambodia, Burma and Guyana
Rise Substantially



From 2012 to 2015, rice consumption in the European Union (EU) rose marginally and steadily alongside population growth. Because the region does not produce rice in large quantities, the EU relies on imports to meet domestic demand. Recently, Thailand, India, and Pakistan have accounted for the largest share of imports.

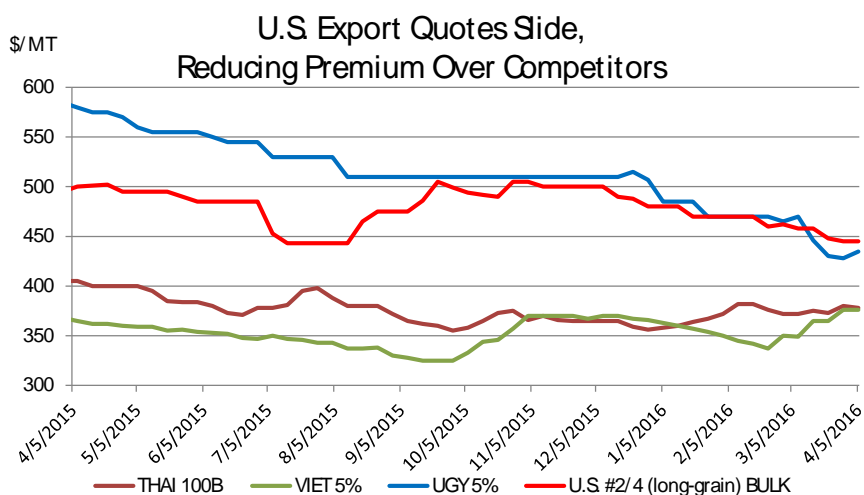
Over the past 4 years, however, an increasing proportion of imports have come from other origins. Under the Everything-But-Arms arrangement, rice imports from Cambodia and Burma gained duty free access, which expanded in 2009 due to the expiration of the quantitative limits on imported rice. Imports from Guyana doubled last year, as exporters diverted more shipments away from Venezuela and to EU. In all, EU imported a record 1.8 million tons in 2015, nearly 40 percent of which arrived from Cambodia, Burma, and Guyana. Long grain rice shipments from these sources are expected to remain strong and to account for a significant portion of the EU's imports this year.

Iraq Importing* Less Long-Grain, More Basmati Rice



Although total imports have declined since 2012, basmati (fragrant) rice has accounted for an increasing share of Iraqi imports over the past 4 years. In 2015, Iraq imported 450,000 tons of basmati rice from India. Combined basmati imports from India and Pakistan comprised a mere 2 percent of Iraq's total rice imports in 2010; however, last year, Indian basmati rice alone accounted for nearly half of total imports. The majority of these basmati imports are of the sharbati variety, which is quoted at lower prices than other premium quality varieties, although higher than non-fragrant long-grain. The increase in basmati rice imports may suggest a shift in consumer preferences in Iraq, although a demand for non-fragrant rice imports remains.

Iraq was a significant market for U.S. rice, routinely receiving more than 100,000 tons annually in prior decades. Along with a small amount of private trading, Iraq administers open tenders and invites selected countries to bid for rice imports. In 2015, a U.S. supplier won a share of a tender and shipped slightly more than 60,000 tons.



This month, U.S. export quotes for bulk shipments continued to slide on weak fresh demand, falling below \$450/ton for the first time since August 2015. However, U.S. quotes maintain a premium over South American and Asian sources. Uruguayan quotes slid 4 percent from the prior month with additional supplies from the new crop harvest. Thai quotes increased a marginal 2 percent to \$373/ton and Vietnamese quotes climbed 5 percent to \$381/ton on expected regional demand.

SELECTED TRADE CHANGES for 2016

- Brazil's imports are raised 100,000 tons to 800,000 on higher import demand resulting from smaller crop.
- Egypt's exports are slashed 150,000 tons to 250,000 on a newly-implemented rice export ban.
- European Union's imports are revised up 100,000 tons to 1.6 million on stronger imports to date.
- India's exports are raised 400,000 tons to 9.0 million on higher levels of trade to the Middle East.
- Pakistan's exports are reduced 200,000 tons to 4.4 million on smaller exportable supplies.
- Senegal's imports are cut 115,000 tons to 985,000 due to higher production.
- Turkey's imports are trimmed 130,000 tons to 200,000 on lower consumption.

World Rice Trade
January/ December Year, Thousand Metric Tons

	2011/ 12	2012/ 13	2013/ 14	2014/ 15	2015/ 16 Mar	2015/ 16 Apr
TY Exports						
Argentina	608	526	494	310	480	480
Brazil	1,105	830	852	895	800	750
Burma	1,357	1,163	1,688	1,735	1,800	1,800
Cambodia	900	1,075	1,000	1,150	900	900
China	267	447	393	262	350	350
Egypt	600	700	600	250	400	250
European Union	194	203	284	251	270	270
Guyana	265	346	502	536	520	520
India	10,250	10,480	11,588	11,046	8,600	9,000
Pakistan	3,399	4,126	3,600	4,000	4,600	4,400
Paraguay	262	365	380	407	500	500
Russia	314	140	187	163	190	190
Thailand	6,945	6,722	10,969	9,779	10,000	10,000
Uruguay	1,056	939	957	718	950	950
Vietnam	7,717	6,700	6,325	6,606	7,000	7,000
Others	1,430	1,425	1,261	1,138	1,008	988
Subtotal	36,669	36,187	41,080	39,246	38,368	38,348
United States	3,298	3,295	2,998	3,472	3,325	3,325
World Total	39,967	39,482	44,078	42,718	41,693	41,673
TY Imports						
Angola	360	430	496	450	450	450
Bangladesh	53	114	1,290	570	600	600
Brazil	732	712	586	365	700	800
Cameroon	450	550	610	525	530	530
China	2,900	3,500	4,450	5,150	5,000	5,000
Cote d'Ivoire	1,265	830	950	1,100	800	800
Cuba	330	413	377	575	500	500
European Union	1,313	1,375	1,556	1,786	1,500	1,600
Ghana	595	725	590	500	600	580
Indonesia	1,960	650	1,225	1,198	2,000	2,000
Iran	1,500	2,220	1,650	1,300	1,450	1,450
Iraq	1,478	1,294	1,080	1,009	1,200	1,150
Japan	650	690	669	688	700	700
Kenya	400	410	440	450	460	460
Malaysia	1,006	885	989	1,051	1,020	1,020
Mexico	680	746	658	708	700	700
Mozambique	445	500	500	480	500	500
Nepal	351	340	510	529	500	500
Nigeria	3,400	2,400	3,200	3,000	2,500	2,500
Philippines	1,500	1,000	1,800	2,000	2,000	2,000
Saudi Arabia	1,193	1,326	1,410	1,420	1,450	1,450
Senegal	918	902	960	990	1,100	985
South Africa	870	990	910	912	1,000	1,000
United Arab Emirates	430	440	450	460	460	460
Venezuela	375	500	480	500	500	500
Others	11,042	11,725	12,463	10,958	11,048	10,909
Subtotal	36,196	35,667	40,299	38,674	39,268	39,144
Unaccounted	3,131	3,140	3,024	3,286	1,650	1,754
United States	640	675	755	758	775	775
World Total	39,967	39,482	44,078	42,718	41,693	41,673

TY= Trade Year, see Endnotes. Note about dates: 2015/16 is calendar year 2016, 2014/15 is calendar year 2015, and so on.

World Rice Production, Consumption, and Stocks
Local Marketing Years, Thousand Metric Tons

	2011/ 12	2012/ 13	2013/ 14	2014/ 15	2015/ 16 Mar	2015/ 16 Apr
Milled Production						
Bangladesh	33,700	33,820	34,390	34,500	34,600	34,500
Brazil	7,888	8,037	8,300	8,465	7,905	7,600
Burma	11,473	11,715	11,957	12,600	12,200	12,200
Cambodia	4,268	4,670	4,725	4,700	4,350	4,350
China	140,700	143,000	142,530	144,560	145,770	145,770
Egypt	4,250	4,675	4,750	4,530	4,000	4,000
India	105,310	105,240	106,646	105,480	103,000	103,000
Indonesia	36,500	36,550	36,300	35,560	35,300	35,300
Japan	7,792	7,907	7,931	7,849	7,653	7,653
Korea, South	4,224	4,006	4,230	4,241	4,327	4,327
Pakistan	6,160	5,536	6,798	6,900	6,900	6,700
Philippines	10,710	11,428	11,858	11,915	11,500	11,350
Sri Lanka	3,138	2,675	2,840	2,850	3,300	3,300
Thailand	20,460	20,200	20,460	18,750	15,900	15,800
Vietnam	27,152	27,537	28,161	28,166	28,200	28,100
Others	38,025	39,040	40,422	40,623	40,079	40,574
Subtotal	461,750	466,036	472,298	471,689	464,984	464,524
United States	5,866	6,348	6,117	7,106	6,107	6,107
World Total	467,616	472,384	478,415	478,795	471,091	470,631
Consumption and Residual						
Bangladesh	34,300	34,500	34,900	35,100	35,500	35,400
Brazil	7,928	7,850	7,900	7,929	7,940	7,840
Burma	10,200	10,400	10,450	10,650	10,650	10,650
Cambodia	3,400	3,550	3,650	3,600	3,600	3,600
China	139,600	144,000	146,300	148,000	150,300	150,300
Egypt	3,620	4,050	4,000	4,000	4,000	3,800
India	93,334	94,031	98,710	98,233	98,900	98,500
Indonesia	38,188	38,127	38,500	38,300	38,100	38,100
Japan	8,376	8,351	8,380	8,600	8,300	8,600
Korea, South	4,880	4,489	4,422	4,415	4,390	4,390
Nepal	3,677	3,353	3,811	3,716	3,600	3,600
Nigeria	5,600	5,300	5,800	5,800	5,850	5,850
Philippines	12,860	12,850	12,850	13,200	13,250	13,250
Thailand	10,400	10,600	10,875	10,900	11,200	11,000
Vietnam	19,650	21,900	22,000	22,000	21,900	21,850
Others	56,799	58,834	61,253	61,034	61,260	61,484
Subtotal	457,333	464,869	477,634	478,389	480,378	480,227
United States	3,492	3,779	3,977	4,155	3,853	3,853
World Total	460,825	468,648	481,611	482,544	484,231	484,080
Ending Stocks						
China	45,023	46,832	46,802	47,636	47,756	47,756
India	25,100	25,440	22,757	17,766	13,266	13,266
Indonesia	7,403	6,476	5,501	3,959	3,159	3,159
Japan	2,735	2,857	3,007	2,821	3,180	2,494
Korea, South	755	780	899	1,188	1,591	1,591
Philippines	1,509	1,487	1,695	2,210	2,460	2,310
Thailand	9,330	12,808	11,724	10,095	4,995	5,195
Others	13,668	12,726	13,956	16,390	12,714	13,020
Subtotal	105,523	109,406	106,341	102,065	89,121	88,791
United States	1,303	1,156	1,025	1,552	1,393	1,377
World Total	106,826	110,562	107,366	103,617	90,514	90,168

Note: All data are reported on a milled basis.

Regional Rice Imports, Production, Consumption, and Stocks

Thousand Metric Tons

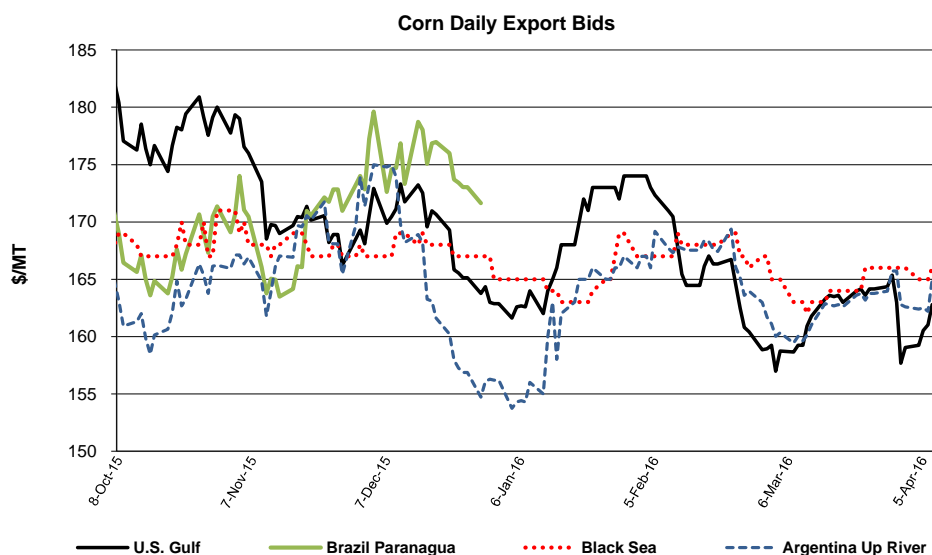
	2011/ 12	2012/ 13	2013/ 14	2014/ 15	Mar 2015/ 16	Apr 2015/ 16
TY Imports						
North America	1,664	1,776	1,771	1,816	1,835	1,835
Caribbean	845	971	903	1,176	1,075	1,075
South America	1,881	1,833	1,814	1,680	1,947	1,997
Other Europe	120	125	132	128	125	135
Former Soviet Union - 12	469	557	567	387	411	411
Middle East	6,455	7,152	6,637	5,981	6,370	6,195
North Africa	777	487	480	466	455	455
Sub-Saharan Africa	11,853	11,567	12,669	11,497	11,370	11,255
East Asia	4,389	5,349	6,043	6,681	6,635	6,636
South Asia	737	722	2,581	1,569	1,270	1,270
Southeast Asia	5,488	3,606	5,027	5,494	6,215	6,220
Others	2,158	2,197	2,430	2,557	2,335	2,435
Total	36,836	36,342	41,054	39,432	40,043	39,919
Production						
North America	5,979	6,479	6,248	7,285	6,241	6,260
Caribbean	1,002	974	1,054	1,104	976	996
South America	15,215	15,852	16,384	16,365	16,056	15,760
European Union - 28	2,139	2,100	1,937	1,963	2,005	2,055
Former Soviet Union - 12	1,294	1,294	1,205	1,185	1,261	1,262
Middle East	2,170	2,251	2,450	2,443	2,392	2,392
North Africa	4,289	4,704	4,789	4,530	4,000	4,000
Sub-Saharan Africa	13,002	13,272	13,984	14,438	14,372	14,768
East Asia	155,488	157,843	157,681	159,560	160,520	160,520
South Asia	152,027	150,631	154,490	153,331	151,420	151,120
Southeast Asia	113,649	115,490	116,867	115,367	111,001	110,651
Others	1,362	1,494	1,326	1,224	847	847
Total	467,616	472,384	478,415	478,795	471,091	470,631
Domestic Consumption						
North America	4,668	4,977	5,202	5,369	5,083	5,083
Central America	1,156	1,171	1,193	1,243	1,247	1,252
Caribbean	1,977	1,954	1,992	2,138	2,078	2,098
South America	14,130	14,354	14,542	14,577	14,766	14,605
European Union - 28	3,300	3,250	3,250	3,320	3,280	3,380
Former Soviet Union - 12	1,435	1,579	1,551	1,403	1,426	1,426
Middle East	8,603	8,854	9,029	8,915	8,902	8,895
North Africa	4,045	4,572	4,480	4,430	4,430	4,230
Sub-Saharan Africa	23,816	24,741	26,571	26,155	26,285	26,437
East Asia	156,212	160,349	162,692	164,324	166,270	166,540
South Asia	137,167	137,462	143,476	143,540	144,570	144,070
Southeast Asia	99,128	101,994	103,092	103,664	103,761	103,541
Others	667	707	708	554	495	510
Total	456,304	465,964	477,776	479,632	482,593	482,067
Ending Stocks						
North America	1,455	1,345	1,176	1,704	1,506	1,509
Central America	235	189	208	242	229	229
Caribbean	343	289	266	265	199	238
South America	1,656	1,591	1,902	2,116	1,747	1,723
European Union - 28	1,146	1,188	1,163	1,237	1,176	1,232
Middle East	1,526	2,039	1,836	1,583	1,331	1,250
North Africa	487	427	602	916	541	891
Sub-Saharan Africa	2,085	2,229	1,787	2,483	1,620	1,704
East Asia	48,887	50,832	50,996	51,947	52,814	52,169
South Asia	27,461	26,819	25,629	21,785	16,605	16,446
Southeast Asia	21,371	23,197	21,399	19,051	12,573	12,606
Oceania	40	238	241	182	68	68
Others	134	179	161	106	105	103
Total	106,826	110,562	107,366	103,617	90,514	90,168

NOTES: Regional definitions appear on last page of this circular. Imports are reported on a trade year basis. All other data are reported using local marketing years.

COARSE GRAINS: WORLD MARKETS AND TRADE

OVERVIEW

World corn production for 2015/16 is up with larger crops for Argentina and Mexico. Global corn trade is raised to a record level with larger imports for Vietnam and Mexico more than offsetting a cut to EU. Exports are boosted for Argentina, EU, Russia, and Ukraine. Global consumption is higher and ending stocks are projected at record levels. The U.S. season-average farm price is lowered slightly from last month.



PRICES

Throughout March, U.S. export quotes strengthened based on robust sales and shipments, but dropped at the end of the month in response to larger-than-expected planting intentions for 2016 in the *Prospective Plantings* report. U.S. quotes have since recovered, ending at \$163/ton, up \$4 from last month. U.S. quotes remain competitive against all major exporters. Argentine and Black Sea quotes also moved higher this month (now \$165/ton and \$166/ton, respectively) with strong exports. Brazilian prices are seasonally unavailable.

TRADE CHANGES IN 2015/16

Selected Exporters

- **U.S. sorghum** is cut 200,000 tons to 7.4 million on the slowing pace of sales, especially to China.
- **Argentine corn** is increased 1.0 million tons to 20.5 million on larger supplies.
- **EU corn** is up 300,000 tons to 1.4 million on the pace of licenses issued.
- **Russian corn** is raised 300,000 tons to 4.1 million with larger shipments to South Korea and Middle Eastern countries. **Barley** is boosted 300,000 tons to 3.3 million reflecting large shipments to Saudi Arabia.
- **South African corn** is trimmed 100,000 tons to 700,000 on tighter supplies and the current pace of trade.
- **Ukrainian corn** is raised 200,000 tons to 15.7 million on a continued strong pace.
- **Argentine barley** is boosted 400,000 tons to 2.6 million on a larger crop and the fast pace of shipments.
- **Australian barley** is cut 500,000 tons to 5.5 million on slower pace of trade to China.
- **Kazakh barley** is up 200,000 tons to 800,000 reflecting strong shipments to Iran.

Selected Importers

- **Egyptian corn** is lifted 250,000 tons to 8.3 million as stronger demand for feed is reflected by a faster pace of imports.
- **EU corn** is cut 1.0 million tons to 15.0 million on expectations that a greater use of wheat in feed rations curbs demand for corn. In addition, the pace of issuing import licenses has slowed in recent months.
- **Indian corn** is down 150,000 tons to 250,000 on the recent cancellation of a tender.
- **Mexican corn** is raised 500,000 tons to 12.0 million on the fast pace of imports from the United States. **Sorghum** is up 200,000 tons to 700,000 on a smaller crop. Even with larger imports, sorghum feeding is expected to be lower based on tight domestic supplies and competitively-priced corn imports.

-
- **Turkish corn** is lowered 300,000 tons to 900,000 on a slower-than-expected pace of trade.
 - **Vietnamese corn** is up 2.0 million tons to a record 5.0 million reflecting strong shipments from Brazil and Argentina.
 - **Iranian barley** is boosted 400,000 tons to 1.9 million on strong shipments from Kazakhstan.
 - **Japanese barley** is down 200,000 tons to 1.1 million and **sorghum** is cut 100,000 tons to 850,000, both on trade to date. Increased use of domestic rice in feed rations continues to erode demand for imported barley and sorghum.
 - **Saudi barley** is up 500,000 tons to 8.5 million on larger-than-expected shipments from Argentina.
 - **Chinese sorghum** is trimmed 200,000 tons to 6.8 million with the slowing pace in recent months.

World Coarse Grain Trade
October/ September Year, Thousand Metric Tons

	2011/ 12	2012/ 13	2013/ 14	2014/ 15	2015/ 16 Mar	2015/ 16 Apr
TY Exports						
Argentina	22,308	29,497	16,630	21,002	22,805	24,205
Australia	7,279	6,411	7,002	7,289	7,425	6,875
Brazil	12,677	26,078	22,059	21,954	37,535	37,535
Canada	3,853	4,658	5,460	3,597	4,050	4,150
European Union	7,177	8,942	7,842	15,067	10,482	10,782
Mexico	694	522	501	792	1,000	1,000
Paraguay	2,188	2,861	2,718	3,031	2,715	2,715
Russia	5,996	4,366	7,072	9,155	6,920	7,470
Serbia	2,345	628	1,755	3,001	1,725	1,725
Ukraine	17,448	15,527	24,125	24,208	19,290	19,520
Others	11,291	12,127	12,840	8,007	7,560	7,550
Subtotal	93,256	111,617	108,004	117,103	121,507	123,527
United States	40,106	20,586	56,772	56,340	49,935	49,735
World Total	133,362	132,203	164,776	173,443	171,442	173,262
TY Imports						
Algeria	3,741	3,289	4,946	4,862	4,830	4,730
Canada	764	523	715	1,710	1,035	1,100
Chile	1,523	1,327	1,621	1,707	2,050	2,050
China	7,924	5,603	12,445	25,699	17,250	17,000
Colombia	4,103	4,090	4,795	4,747	4,830	4,830
Dominican Republic	1,054	1,046	1,011	1,202	1,100	1,200
Egypt	7,250	5,097	8,775	7,925	8,055	8,305
European Union	6,908	11,778	16,293	9,146	16,255	15,275
Indonesia	1,724	2,719	3,501	3,381	3,100	3,100
Iran	5,700	4,800	6,600	8,100	6,500	6,900
Israel	1,530	1,564	2,073	1,603	1,975	1,800
Japan	17,730	17,743	17,501	16,725	17,025	16,715
Jordan	1,311	1,406	1,672	1,459	1,475	1,450
Korea, South	7,726	8,265	10,499	10,245	10,090	10,090
Libya	829	1,220	1,493	1,685	1,650	1,600
Malaysia	3,309	3,048	3,476	3,221	3,500	3,500
Mexico	12,819	7,624	11,317	11,570	12,250	12,950
Morocco	2,479	1,832	2,858	2,217	2,300	2,400
Peru	1,927	2,404	2,336	2,863	2,825	2,825
Saudi Arabia	10,485	12,390	11,332	11,115	11,525	12,025
South Africa	565	92	235	611	2,825	2,900
Taiwan	4,478	4,404	4,356	3,949	4,200	4,200
Tunisia	1,071	1,608	1,449	1,525	1,600	1,600
Venezuela	2,596	2,154	2,627	2,433	1,900	1,900
Vietnam	1,600	1,700	2,800	3,500	3,000	5,000
Others	15,868	15,572	18,117	19,060	18,680	18,225
Subtotal	127,014	123,298	154,843	162,260	161,825	163,670
Unaccounted	3,206	2,390	6,611	7,896	6,007	5,982
United States	3,142	6,515	3,322	3,287	3,610	3,610
World Total	133,362	132,203	164,776	173,443	171,442	173,262

TY= Trade Year, see Endnotes.

World Coarse Grains Production, Consumption, and Stocks
Local Marketing Years, Thousand Metric Tons

	2011/ 12	2012/ 13	2013/ 14	2014/ 15	2015/ 16 Mar	2015/ 16 Apr
Production						
Argentina	30,105	37,246	35,665	35,732	35,066	36,534
Australia	12,257	11,414	12,158	11,651	12,680	12,580
Brazil	75,884	84,253	82,603	87,603	86,613	86,613
Canada	22,921	24,445	28,745	21,992	25,660	25,660
China	198,635	212,192	225,408	222,750	231,580	231,580
Ethiopia	12,264	12,286	13,079	13,346	12,400	9,985
European Union	149,923	145,942	158,916	170,479	150,979	150,730
India	42,058	39,910	43,216	43,081	38,790	38,790
Indonesia	8,850	8,500	9,100	9,000	9,400	9,400
Mexico	25,689	28,881	32,020	32,390	30,775	30,375
Nigeria	17,421	18,573	19,292	19,015	17,950	17,950
Philippines	7,130	7,261	7,532	7,671	7,500	7,500
Russia	33,077	28,658	35,735	40,386	37,320	37,427
Turkey	11,299	10,595	13,075	9,475	14,175	14,275
Ukraine	33,476	29,528	40,022	39,389	33,245	33,387
Others	152,887	151,190	156,049	162,216	152,520	151,647
Subtotal	833,876	850,874	912,615	926,176	896,653	894,433
United States	322,451	285,311	367,089	377,234	366,902	366,902
World Total	1,156,327	1,136,185	1,279,704	1,303,410	1,263,555	1,261,335
Domestic Consumption						
Argentina	10,510	12,050	13,695	14,232	14,581	14,331
Brazil	54,653	55,803	58,028	59,998	60,943	60,943
Canada	20,285	20,339	22,372	21,288	21,953	21,953
China	196,192	209,671	223,546	229,059	237,975	239,725
Egypt	12,736	12,910	14,080	14,809	15,458	15,453
European Union	151,460	153,095	164,105	162,870	161,505	158,795
India	37,650	35,075	37,600	40,400	39,950	40,000
Indonesia	10,500	10,900	11,900	12,200	12,800	12,800
Iran	10,320	10,520	11,320	12,020	12,720	12,920
Japan	18,040	17,830	17,570	16,933	17,105	16,846
Mexico	37,985	36,195	40,885	41,925	42,815	42,915
Nigeria	17,321	18,700	19,350	18,950	18,150	18,150
Russia	27,728	25,134	28,619	31,139	30,420	30,140
Turkey	11,755	13,005	13,430	13,080	14,430	14,430
Ukraine	15,559	14,661	15,977	15,230	14,000	14,025
Others	215,753	219,078	226,764	238,439	237,344	235,693
Subtotal	866,553	858,772	927,454	959,744	945,917	944,641
United States	288,857	275,537	305,048	311,347	315,719	315,255
World Total	1,155,410	1,134,309	1,232,502	1,271,091	1,261,636	1,259,896
Ending Stocks						
Brazil	4,822	9,560	14,258	8,240	6,885	6,875
Canada	3,390	3,024	4,648	3,342	4,059	4,074
China	60,362	68,377	82,651	102,019	112,800	110,799
European Union	15,744	13,056	15,503	18,093	13,839	14,518
Iran	4,684	4,654	5,094	7,234	6,674	6,874
Mexico	1,857	1,628	3,583	4,807	4,017	4,217
Saudi Arabia	3,211	3,391	3,888	3,876	4,001	3,991
Others	40,391	36,935	47,420	49,118	39,476	41,727
Subtotal	134,461	140,625	177,045	196,729	191,751	193,075
United States	27,819	23,531	34,313	46,948	51,323	52,041
World Total	162,280	164,156	211,358	243,677	243,074	245,116

Regional Coarse Grains Imports, Production, Consumption, and Stocks

Thousand Metric Tons

	2011/ 12	2012/ 13	2013/ 14	2014/ 15	Mar 2015/ 16	Apr 2015/ 16
TY Imports						
North America	16,725	14,662	15,354	16,567	16,895	17,660
Central America	2,769	2,470	2,923	3,460	3,575	3,675
Caribbean	2,156	2,327	2,330	2,444	2,410	2,485
South America	11,967	11,812	13,181	13,353	13,105	13,080
European Union - 28	6,908	11,778	16,293	9,146	16,255	15,275
Former Soviet Union - 12	1,036	727	816	726	815	820
Middle East	23,515	25,076	26,614	27,700	25,540	26,015
North Africa	15,370	13,046	19,521	18,214	18,435	18,635
Sub-Saharan Africa	3,329	2,746	3,630	4,452	6,890	6,900
East Asia	38,040	36,168	44,880	56,675	48,665	48,105
Southeast Asia	7,317	8,058	11,292	11,446	11,080	13,070
Others	1,024	943	1,331	1,364	1,770	1,560
Total	130,156	129,813	158,165	165,547	165,435	167,280
Production						
North America	371,061	338,637	427,854	431,616	423,337	422,937
South America	119,602	136,025	131,844	136,702	135,290	136,888
European Union - 28	149,923	145,942	158,916	170,479	150,979	150,730
Other Europe	9,497	6,570	8,813	10,649	8,446	8,946
Former Soviet Union - 12	78,648	68,222	87,758	91,599	82,256	82,505
Middle East	20,412	18,769	21,737	17,952	22,896	22,996
North Africa	11,120	10,155	11,556	11,172	12,532	12,531
Sub-Saharan Africa	99,274	103,534	102,584	108,311	96,575	92,806
East Asia	200,771	214,616	227,798	225,172	233,950	233,948
South Asia	50,175	47,642	51,986	51,827	47,444	47,344
Southeast Asia	28,379	29,158	31,003	31,088	32,003	31,983
Oceania	12,813	12,082	12,805	12,329	13,390	13,290
Others	4,652	4,833	5,050	4,514	4,457	4,431
Total	1,156,327	1,136,185	1,279,704	1,303,410	1,263,555	1,261,335
Domestic Consumption						
North America	347,127	332,071	368,305	374,560	380,487	380,123
South America	86,793	89,796	94,422	97,173	98,747	98,387
European Union - 28	151,460	153,095	164,105	162,870	161,505	158,795
Other Europe	8,375	7,100	7,707	7,926	8,035	8,112
Former Soviet Union - 12	54,378	50,225	55,687	57,927	56,073	55,718
Middle East	41,186	43,027	45,890	45,327	48,181	48,856
North Africa	25,266	24,941	27,987	30,177	31,310	31,054
Sub-Saharan Africa	97,660	103,221	102,338	110,050	104,760	101,345
East Asia	228,767	242,831	257,700	262,617	271,726	273,217
South Asia	45,606	42,604	46,367	49,319	49,041	49,099
Southeast Asia	34,612	35,887	37,942	40,158	41,665	43,205
Oceania	6,518	6,132	5,764	5,572	5,924	5,874
Others	9,556	9,573	10,075	10,243	10,414	10,589
Total	1,137,304	1,140,503	1,224,289	1,253,919	1,267,868	1,264,374
Ending Stocks						
North America	33,066	28,183	42,544	55,097	59,399	60,332
South America	9,645	15,560	21,380	14,583	12,251	12,956
European Union - 28	15,744	13,056	15,503	18,093	13,839	14,518
Other Europe	1,021	600	763	1,175	786	1,191
Former Soviet Union - 12	6,181	5,038	7,087	7,710	6,057	5,697
Middle East	10,547	10,059	11,817	13,052	13,303	13,187
North Africa	5,479	3,529	5,642	5,568	5,342	5,665
Sub-Saharan Africa	9,256	9,074	9,557	11,084	7,304	7,703
East Asia	63,842	71,661	86,656	105,879	115,900	114,640
South Asia	2,673	2,440	3,933	5,148	3,311	3,098
Southeast Asia	3,061	3,275	4,396	4,367	3,419	3,890
Oceania	977	912	1,130	954	1,114	1,300
Others	788	769	950	967	1,049	939
Total	162,280	164,156	211,358	243,677	243,074	245,116

NOTES: Regional definitions appear on last page of this circular. Imports are reported on a trade year basis. All other data are reported using local marketing years.

World Corn Trade
October/ September Year, Thousand Metric Tons

	2011/ 12	2012/ 13	2013/ 14	2014/ 15	2015/ 16 Mar	2015/ 16 Apr
TY Exports						
Argentina	16,501	22,789	12,846	18,447	19,500	20,500
Brazil	12,674	26,044	22,041	21,909	37,500	37,500
Burma	200	550	700	850	900	900
Canada	494	1,813	1,917	395	1,000	1,000
European Union	3,287	2,193	2,405	4,026	1,100	1,400
Mexico	694	522	501	784	1,000	1,000
Paraguay	2,188	2,858	2,714	3,012	2,700	2,700
Russia	2,027	1,917	4,192	3,213	3,800	4,100
Serbia	2,331	601	1,736	2,964	1,700	1,700
Ukraine	15,157	12,726	20,004	19,661	15,500	15,700
Others	9,787	10,252	10,614	5,963	5,465	5,280
Subtotal	65,340	82,265	79,670	81,224	90,165	91,780
United States	38,342	18,262	50,684	46,773	42,000	42,000
World Total	103,682	100,527	130,354	127,997	132,165	133,780
TY Imports						
Algeria	3,231	2,918	4,156	4,116	4,200	4,100
Canada	747	493	679	1,533	1,000	1,000
Chile	906	844	1,456	1,516	1,800	1,800
China	5,231	2,702	3,277	5,516	2,500	2,500
Colombia	3,209	3,266	4,436	4,496	4,500	4,500
Dominican Republic	1,054	1,046	1,011	1,202	1,100	1,200
Egypt	7,154	5,059	8,726	7,826	8,000	8,250
European Union	6,113	11,362	15,952	8,646	16,000	15,000
Guatemala	691	678	767	881	900	1,000
Indonesia	1,724	2,719	3,501	3,381	3,100	3,100
Iran	4,000	3,700	5,500	6,200	5,000	5,000
Israel	1,221	1,224	1,652	1,296	1,600	1,500
Japan	14,892	14,412	15,121	14,656	14,700	14,700
Kenya	400	100	800	900	1,000	1,000
Korea, South	7,636	8,174	10,406	10,168	10,000	10,000
Malaysia	3,309	3,048	3,476	3,221	3,500	3,500
Mexico	11,172	5,676	10,954	11,269	11,500	12,000
Morocco	1,943	1,684	2,349	1,941	2,100	2,100
Peru	1,772	2,254	2,232	2,741	2,700	2,700
Saudi Arabia	1,816	2,063	2,684	2,904	3,500	3,500
South Africa	424	0	79	469	2,700	2,700
Taiwan	4,341	4,232	4,189	3,821	4,100	4,100
Tunisia	853	846	993	1,042	1,100	1,100
Venezuela	2,596	2,154	2,626	2,433	1,900	1,900
Vietnam	1,600	1,700	2,800	3,500	3,000	5,000
Others	12,654	12,528	14,570	15,467	15,200	14,510
Subtotal	100,689	94,882	124,392	121,141	126,700	127,760
Unaccounted	2,228	1,380	5,235	6,047	4,215	4,770
United States	765	4,265	727	809	1,250	1,250
World Total	103,682	100,527	130,354	127,997	132,165	133,780

TY= Trade Year, see Endnotes.

World Corn Production, Consumption, and Stocks
Local Marketing Years, Thousand Metric Tons

	2011/ 12	2012/ 13	2013/ 14	2014/ 15	2015/ 16 Mar	2015/ 16 Apr
Production						
Argentina	21,000	27,000	26,000	28,700	27,000	28,000
Brazil	73,000	81,500	80,000	85,000	84,000	84,000
Canada	11,359	13,060	14,194	11,487	13,600	13,600
China	192,780	205,614	218,490	215,646	224,580	224,580
Egypt	5,500	5,800	5,800	5,960	6,000	6,000
European Union	68,123	58,896	64,635	75,499	57,751	57,465
India	21,759	22,258	24,259	24,170	21,000	21,000
Indonesia	8,850	8,500	9,100	9,000	9,400	9,400
Mexico	18,726	21,591	22,880	25,480	23,500	24,000
Nigeria	9,250	7,630	7,700	7,515	7,000	7,000
Philippines	7,130	7,261	7,532	7,671	7,500	7,500
Russia	6,962	8,213	11,635	11,325	13,000	13,168
South Africa	12,759	12,365	14,925	10,629	6,500	6,500
Turkey	3,600	4,400	5,100	4,800	6,100	6,200
Ukraine	22,838	20,922	30,900	28,450	23,300	23,333
Others	93,164	91,287	96,052	100,418	93,918	94,902
Subtotal	576,800	596,297	639,202	651,750	624,149	626,648
United States	312,789	273,192	351,272	361,091	345,486	345,486
World Total	889,589	869,489	990,474	1,012,841	969,635	972,134
Total Consumption						
Argentina	7,000	7,900	8,800	9,300	9,500	9,300
Brazil	51,500	52,500	55,000	57,000	58,000	58,000
Canada	11,636	11,605	12,700	12,820	13,400	13,400
China	188,000	200,000	208,000	202,000	216,000	218,000
Egypt	11,700	12,000	13,200	13,900	14,500	14,500
European Union	69,500	69,600	76,500	77,600	76,000	74,000
India	17,200	17,500	19,600	22,300	22,000	22,100
Indonesia	10,500	10,900	11,900	12,200	12,800	12,800
Japan	14,950	14,300	15,000	14,600	14,700	14,600
Korea, South	7,815	8,481	9,891	10,250	10,100	10,100
Mexico	29,000	27,000	31,700	34,450	34,700	35,500
Philippines	7,400	7,400	8,000	8,500	8,700	8,700
Russia	4,700	6,400	7,500	8,100	9,200	8,900
South Africa	10,700	11,000	11,500	11,800	11,000	11,000
Vietnam	6,000	6,500	6,700	8,000	8,400	9,900
Others	142,525	142,994	152,741	157,425	155,798	156,077
Subtotal	606,875	601,435	655,886	678,439	665,630	669,264
United States	277,961	262,973	292,965	301,854	302,147	301,532
World Total	884,836	864,408	948,851	980,293	967,777	970,796
Ending Stocks						
Brazil	4,212	9,150	13,972	7,911	6,522	6,511
China	59,335	67,570	81,315	100,464	111,494	109,494
Egypt	2,220	1,076	2,398	2,274	1,764	2,014
European Union	6,682	5,147	6,829	9,348	6,003	6,413
Iran	3,336	3,236	4,476	5,816	5,456	5,456
Korea, South	1,489	1,265	1,860	1,860	1,837	1,835
Mexico	1,316	1,061	2,694	4,209	3,509	3,709
Others	24,612	24,041	30,192	31,720	23,713	26,196
Subtotal	103,202	112,546	143,736	163,602	160,298	161,628
United States	25,122	20,859	31,292	43,974	46,671	47,286
World Total	128,324	133,405	175,028	207,576	206,969	208,914

Regional Corn Imports, Production, Consumption, and Stocks

Thousand Metric Tons

	2011/ 12	2012/ 13	2013/ 14	2014/ 15	Mar 2015/ 16	Apr 2015/ 16
TY Imports						
North America	12,684	10,434	12,360	13,611	13,750	14,250
Central America	2,766	2,470	2,922	3,460	3,575	3,675
South America	9,886	9,651	12,027	12,040	11,750	11,725
European Union - 28	6,113	11,362	15,952	8,646	16,000	15,000
Former Soviet Union - 12	327	321	447	470	490	495
Middle East	10,853	10,942	13,812	15,198	13,800	13,450
North Africa	13,827	11,154	17,036	15,609	16,150	16,250
Sub-Saharan Africa	2,660	2,096	2,937	3,737	6,225	6,110
East Asia	32,282	29,673	33,072	34,218	31,400	31,400
Southeast Asia	7,304	8,040	11,246	11,432	11,065	13,055
Caribbean	2,156	2,327	2,330	2,444	2,410	2,485
Others	596	677	978	1,085	1,335	1,115
Total	101,454	99,147	125,119	121,950	127,950	129,010
Production						
North America	342,874	307,843	388,346	398,058	382,586	383,086
South America	105,578	120,997	117,456	125,140	122,425	123,575
European Union - 28	68,123	58,896	64,635	75,499	57,751	57,465
Other Europe	7,810	4,915	7,210	8,945	6,676	7,176
Former Soviet Union - 12	34,121	32,310	46,916	43,801	39,944	40,145
Middle East	7,164	7,480	8,138	7,853	9,143	9,243
North Africa	5,722	5,919	5,898	6,161	6,201	6,201
Sub-Saharan Africa	61,919	60,522	63,493	62,400	53,351	53,883
East Asia	194,585	207,737	220,583	217,739	226,658	226,656
South Asia	28,646	28,857	31,865	31,740	28,470	28,370
Central America	3,602	3,743	3,893	3,366	3,300	3,300
Southeast Asia	28,138	28,893	30,721	30,794	31,758	31,688
Others	1,307	1,377	1,320	1,345	1,372	1,346
Total	889,589	869,489	990,474	1,012,841	969,635	972,134
Domestic Consumption						
North America	318,597	301,578	337,365	349,124	350,247	350,432
South America	76,391	78,981	83,566	86,631	87,780	87,495
European Union - 28	69,500	69,600	76,500	77,600	76,000	74,000
Other Europe	6,392	5,194	5,847	6,022	6,010	6,085
Former Soviet Union - 12	16,420	18,080	21,131	21,461	21,525	21,225
Middle East	17,585	18,710	19,785	21,835	22,735	22,710
North Africa	18,000	18,450	20,800	22,100	23,100	22,850
Sub-Saharan Africa	60,179	60,006	62,442	64,051	60,688	61,087
East Asia	217,097	229,234	239,195	232,877	247,025	248,925
South Asia	23,875	23,880	27,182	30,005	29,770	29,870
Southeast Asia	34,357	35,609	37,653	39,824	41,410	42,900
Central America	6,350	6,175	6,650	6,690	6,870	6,920
Others	3,344	3,556	3,581	3,879	3,785	3,910
Total	868,087	869,053	941,697	962,099	976,945	978,409
Ending Stocks						
North America	27,803	23,469	35,586	49,585	51,782	52,597
South America	8,290	13,629	19,008	12,565	10,408	10,930
European Union - 28	6,682	5,147	6,829	9,348	6,003	6,413
Other Europe	771	353	517	961	542	962
Former Soviet Union - 12	2,441	2,003	3,421	3,073	2,470	2,443
Middle East	4,510	4,228	5,957	7,071	7,034	6,809
North Africa	2,994	1,747	3,093	3,261	2,577	2,852
Sub-Saharan Africa	7,056	6,614	7,532	8,590	5,245	5,906
East Asia	62,291	70,361	84,849	103,931	114,064	113,012
South Asia	1,625	1,776	2,839	3,782	2,302	2,087
Southeast Asia	3,058	3,270	4,390	4,361	3,413	3,884
Central America	503	474	610	587	572	622
Others	300	334	397	461	557	397
Total	128,324	133,405	175,028	207,576	206,969	208,914

NOTES: Regional definitions appear on last page of this circular. Imports are reported on a trade year basis. All other data are reported using local marketing years.

World Barley Trade
October/ September Year, Thousand Metric Tons

	2011/ 12	2012/ 13	2013/ 14	2014/ 15	2015/ 16 Mar	2015/ 16 Apr
TY Exports						
Argentina	3,631	3,647	2,829	1,599	2,200	2,600
Australia	5,819	4,622	6,261	5,266	6,000	5,500
Canada	1,437	1,316	1,714	1,384	1,350	1,450
European Union	3,646	6,501	4,926	10,642	9,000	9,000
India	52	546	546	97	200	150
Kazakhstan	659	151	501	476	600	800
Russia	3,667	2,366	2,791	5,807	3,000	3,300
Serbia	14	26	18	37	25	25
Turkey	103	0	9	10	25	25
Ukraine	2,167	2,659	3,827	4,332	3,600	3,600
Others	23	165	69	162	35	60
Subtotal	21,218	21,999	23,491	29,812	26,035	26,510
United States	179	163	336	292	300	300
World Total	21,397	22,162	23,827	30,104	26,335	26,810
TY Imports						
Algeria	501	364	778	723	600	600
Azerbaijan	49	14	78	103	100	100
Brazil	274	369	337	489	400	400
Chile	73	79	56	93	100	100
China	2,541	2,183	4,891	9,859	7,500	7,500
Colombia	301	232	253	249	275	275
European Union	364	53	58	269	100	100
Iran	1,700	1,100	1,100	1,900	1,500	1,900
Israel	276	244	304	278	325	250
Japan	1,257	1,356	1,294	1,097	1,300	1,100
Jordan	736	831	997	759	800	800
Kuwait	376	388	436	412	400	400
Libya	183	573	681	1,001	900	900
Mexico	144	47	108	186	150	150
Morocco	536	148	471	276	200	300
Peru	97	103	87	122	100	100
Saudi Arabia	8,600	10,200	8,500	8,200	8,000	8,500
Tunisia	218	762	456	483	500	500
United Arab Emirates	524	541	468	367	400	400
Uruguay	77	252	126	189	175	175
Others	1,574	1,374	1,571	1,412	960	1,035
Subtotal	20,401	21,213	23,050	28,467	24,785	25,585
Unaccounted	526	518	255	1,207	1,100	775
United States	470	431	522	430	450	450
World Total	21,397	22,162	23,827	30,104	26,335	26,810

TY= Trade Year, see Endnotes.

World Barley Production, Consumption, and Stocks
Local Marketing Years, Thousand Metric Tons

	2011/ 12	2012/ 13	2013/ 14	2014/ 15	2015/ 16 Mar	2015/ 16 Apr
Production						
Algeria	1,350	1,500	1,500	1,300	1,300	1,300
Argentina	4,500	5,000	4,750	2,900	3,600	4,200
Australia	8,221	7,472	9,174	8,014	8,700	8,700
Belarus	1,979	1,917	1,674	1,988	2,000	2,000
Canada	7,892	8,012	10,237	7,119	8,225	8,225
China	1,637	1,626	1,700	1,810	1,700	1,700
Ethiopia	1,592	1,782	1,908	2,030	1,900	1,950
European Union	51,883	54,875	59,674	60,615	60,962	61,346
India	1,663	1,619	1,752	1,831	1,610	1,610
Iran	2,900	2,770	2,800	3,200	3,300	3,300
Kazakhstan	2,593	1,500	2,539	2,412	2,675	2,675
Morocco	2,318	1,201	2,723	1,700	3,500	3,500
Russia	16,938	13,952	15,389	20,026	17,100	17,083
Turkey	7,000	5,500	7,300	4,000	7,400	7,400
Ukraine	9,098	6,935	7,561	9,450	8,750	8,751
Others	8,394	8,354	8,844	8,665	8,752	8,752
Subtotal	129,958	124,015	139,525	137,060	141,474	142,492
United States	3,370	4,768	4,719	3,953	4,666	4,666
World Total	133,328	128,783	144,244	141,013	146,140	147,158
Total Consumption						
Algeria	1,800	2,000	2,050	2,050	2,050	2,050
Argentina	1,200	1,300	1,700	1,500	1,500	1,600
Australia	3,300	3,000	2,800	2,900	2,600	2,600
Belarus	2,100	2,000	1,800	2,000	2,050	2,050
Canada	6,916	6,809	7,720	6,472	6,600	6,600
China	3,800	4,000	6,300	11,600	9,300	9,300
Ethiopia	1,600	1,725	1,925	2,025	2,025	2,025
European Union	51,200	51,000	53,400	51,000	53,100	52,600
Iran	4,100	4,300	4,500	4,600	4,800	5,000
Kazakhstan	1,825	1,375	2,000	2,000	2,100	2,000
Morocco	3,100	1,900	2,300	2,700	3,000	3,000
Russia	14,300	12,100	12,700	14,100	13,900	13,900
Saudi Arabia	7,225	8,325	8,625	8,125	8,525	9,025
Turkey	6,750	6,200	6,950	5,350	6,900	6,900
Ukraine	6,300	5,100	5,000	4,500	4,500	4,500
Others	15,559	15,749	16,430	16,567	16,896	16,849
Subtotal	130,814	126,429	135,967	136,599	141,581	142,222
United States	4,170	4,638	4,775	4,234	4,420	4,404
World Total	134,984	131,067	140,742	140,833	146,001	146,626
Ending Stocks						
Algeria	1,458	1,217	1,178	1,304	1,204	1,204
Canada	1,195	983	1,950	1,217	1,542	1,557
European Union	6,069	5,044	5,621	5,777	5,211	5,623
Iran	1,348	1,418	618	1,418	1,218	1,418
Morocco	750	165	975	371	1,072	1,121
Saudi Arabia	2,814	3,006	3,396	3,481	3,476	3,466
Ukraine	1,171	872	971	1,465	1,222	1,321
Others	6,548	5,920	7,377	7,313	7,210	6,776
Subtotal	21,353	18,625	22,086	22,346	22,155	22,486
United States	1,306	1,750	1,791	1,711	2,087	2,103
World Total	22,659	20,375	23,877	24,057	24,242	24,589

Regional Barley Imports, Production, Consumption, and Stocks

Thousand Metric Tons

	2011/ 12	2012/ 13	2013/ 14	2014/ 15	Mar 2015/ 16	Apr 2015/ 16
TY Imports						
North America	620	499	639	781	625	690
South America	851	1,064	886	1,169	1,085	1,085
European Union - 28	364	53	58	269	100	100
Other Europe	207	126	163	120	160	165
Former Soviet Union - 12	696	378	362	250	320	320
Middle East	12,543	13,906	12,537	12,453	11,660	12,485
North Africa	1,480	1,884	2,432	2,581	2,250	2,350
Sub-Saharan Africa	100	52	116	138	90	90
East Asia	3,924	3,668	6,320	11,080	8,925	8,725
South Asia	67	6	13	24	10	15
Oceania	19	8	46	32	10	10
Total	20,871	21,644	23,572	28,897	25,235	26,035
Production						
North America	11,749	13,812	15,506	11,622	13,476	13,476
South America	5,507	5,884	5,737	3,809	4,573	5,173
European Union - 28	51,883	54,875	59,674	60,615	60,962	61,346
Other Europe	1,189	1,188	1,151	1,223	1,287	1,287
Former Soviet Union - 12	32,227	25,958	29,162	35,565	32,375	32,359
Middle East	11,705	9,689	12,047	8,653	12,358	12,358
North Africa	4,388	3,307	4,748	4,109	5,409	5,409
Sub-Saharan Africa	2,099	2,283	2,376	2,523	2,447	2,497
East Asia	1,962	1,920	1,991	2,134	1,988	1,988
South Asia	2,081	1,956	2,261	2,340	2,113	2,113
Oceania	8,538	7,911	9,591	8,420	9,152	9,152
Total	133,328	128,783	144,244	141,013	146,140	147,158
Domestic Consumption						
North America	11,786	12,347	13,195	11,406	11,745	11,729
South America	3,052	3,152	3,528	3,428	3,585	3,685
European Union - 28	51,200	51,000	53,400	51,000	53,100	52,600
Other Europe	1,366	1,298	1,298	1,344	1,422	1,424
Former Soviet Union - 12	26,268	22,339	23,460	24,524	24,605	24,505
Middle East	22,016	22,435	24,410	21,850	23,971	24,671
North Africa	6,186	5,560	6,230	7,159	7,258	7,253
Sub-Saharan Africa	2,133	2,285	2,480	2,555	2,640	2,638
East Asia	5,580	5,812	8,009	13,192	10,980	10,880
South Asia	2,008	1,868	1,715	1,915	1,910	1,968
Oceania	3,650	3,425	3,250	3,350	3,050	3,050
Total	135,245	131,521	140,975	141,723	144,266	144,403
Ending Stocks						
North America	2,621	3,014	3,980	3,186	3,897	3,928
South America	544	657	816	726	666	756
European Union - 28	6,069	5,044	5,621	5,777	5,211	5,623
Other Europe	202	220	205	176	201	186
Former Soviet Union - 12	2,760	2,194	2,610	3,631	2,883	2,530
Middle East	5,940	5,736	5,788	5,914	6,200	6,311
North Africa	2,424	1,715	2,480	2,237	2,690	2,738
Sub-Saharan Africa	283	330	338	442	405	389
East Asia	961	736	1,038	1,060	1,052	893
South Asia	280	141	253	266	279	281
Oceania	575	588	748	642	758	954
Total	22,659	20,375	23,877	24,057	24,242	24,589

NOTES: Regional definitions appear on last page of this circular. Imports are reported on a trade year basis. All other data are reported using local marketing years.

World Sorghum Trade
October/ September Year, Thousand Metric Tons

	2011/ 12	2012/ 13	2013/ 14	2014/ 15	2015/ 16 Mar	2015/ 16 Apr
TY Exports						
Argentina	2,163	3,059	953	954	1,100	1,100
Australia	1,185	1,425	405	1,699	1,000	1,000
Brazil	0	2	11	13	30	30
India	131	231	88	121	100	100
Kenya	16	32	51	40	30	30
Nigeria	75	50	50	100	50	50
Ukraine	113	124	229	156	100	130
Others	216	234	241	205	162	162
Subtotal	3,899	5,157	2,028	3,288	2,572	2,602
United States	1,549	2,136	5,717	9,249	7,600	7,400
World Total	5,448	7,293	7,745	12,537	10,172	10,002
TY Imports						
Chile	544	404	109	98	150	150
China	84	631	4,161	10,162	7,000	6,800
Ethiopia	30	50	50	75	150	150
European Union	126	291	184	131	80	100
Japan	1,481	1,897	1,003	903	950	850
Kenya	74	102	94	79	100	100
Mexico	1,369	1,793	162	29	500	700
Pakistan	11	10	14	32	130	130
South Africa	71	44	61	0	50	125
South Sudan	13	6	125	100	50	100
Others	1,287	1,388	795	403	415	415
Subtotal	5,090	6,616	6,758	12,012	9,575	9,620
Unaccounted	355	434	984	498	487	272
United States	3	243	3	27	110	110
World Total	5,448	7,293	7,745	12,537	10,172	10,002

TY= Trade Year, see Endnotes.

World Sorghum Production, Consumption, and Stocks
Local Marketing Years, Thousand Metric Tons

	2011/ 12	2012/ 13	2013/ 14	2014/ 15	2015/ 16 Mar	2015/ 16 Apr
Production						
Argentina	4,200	4,700	4,400	3,500	3,900	3,700
Australia	2,239	2,230	1,282	2,104	2,200	2,100
Brazil	2,222	2,102	1,890	2,000	2,000	2,000
Burkina	1,500	1,924	1,880	1,708	1,900	1,671
Cameroon	1,150	1,100	1,150	1,150	1,150	1,150
China	2,051	2,556	2,892	2,885	2,900	2,900
Ethiopia	3,951	3,604	3,829	4,000	3,800	2,600
India	5,979	5,281	5,542	5,450	5,500	5,500
Mali	1,191	1,212	820	1,272	1,300	1,300
Mexico	6,425	6,174	8,500	6,270	6,600	5,700
Niger	807	1,376	1,320	1,426	1,100	1,300
Nigeria	6,900	5,943	6,592	6,700	6,150	6,150
South Sudan	480	650	680	990	400	900
Sudan	4,605	4,524	2,249	6,281	5,500	2,388
Tanzania	807	839	832	840	840	820
Others	7,280	7,101	7,119	7,303	7,210	6,981
Subtotal	51,787	51,316	50,977	53,879	52,450	47,160
United States	5,410	6,293	9,966	10,988	15,158	15,158
World Total	57,197	57,609	60,943	64,867	67,608	62,318
Total Consumption						
Argentina	1,900	2,300	2,700	2,800	3,000	2,800
Australia	1,105	1,105	905	505	1,205	1,105
Brazil	2,175	2,300	2,000	2,000	1,900	1,900
Burkina	1,550	1,850	1,900	1,700	1,900	1,700
Cameroon	1,175	1,110	1,165	1,175	1,175	1,175
China	2,200	3,200	6,800	12,900	10,000	9,800
Ethiopia	3,700	3,700	3,900	4,100	4,000	2,900
European Union	760	795	880	995	880	870
India	6,000	5,150	5,200	5,100	5,550	5,550
Mali	1,300	1,200	950	1,200	1,300	1,300
Mexico	8,100	8,100	8,300	6,600	7,200	6,500
Niger	950	1,200	1,300	1,450	1,100	1,400
Nigeria	6,800	5,900	6,550	6,650	6,050	6,050
South Sudan	480	650	750	1,050	450	1,000
Sudan	4,500	4,700	2,550	6,000	5,800	2,800
Others	10,414	10,607	8,691	8,654	8,666	8,462
Subtotal	54,592	52,667	55,608	62,721	61,259	56,126
United States	3,916	4,796	4,127	2,429	5,843	6,097
World Total	58,508	57,463	59,735	65,150	67,102	62,223
Ending Stocks						
Argentina	164	781	1,202	971	802	871
Brazil	472	272	151	138	208	208
China	366	326	568	706	581	581
India	206	109	364	593	443	443
Mexico	418	285	647	338	238	238
Nigeria	215	208	200	150	200	200
Sudan	609	588	357	723	493	381
Others	1,618	1,843	1,652	1,635	1,354	1,240
Subtotal	4,068	4,412	5,141	5,254	4,319	4,162
United States	583	385	864	468	1,655	1,655
World Total	4,651	4,797	6,005	5,722	5,974	5,817

Regional Sorghum Imports, Production, Consumption, and Stocks

Thousand Metric Tons

	2011/ 12	2012/ 13	2013/ 14	2014/ 15	Mar 2015/ 16	Apr 2015/ 16
TY Imports						
North America	1,372	2,036	165	56	610	810
South America	1,199	1,071	239	114	240	240
European Union - 28	126	291	184	131	80	100
Other Europe	0	0	0	0	0	0
Middle East	101	194	232	22	50	50
North Africa	54	1	41	1	5	5
Sub-Saharan Africa	558	587	558	527	550	675
East Asia	1,655	2,650	5,281	11,142	8,005	7,705
Southeast Asia	13	18	46	14	15	15
Others	15	11	15	32	130	130
Total	5,093	6,859	6,761	12,039	9,685	9,730
Production						
North America	11,835	12,467	18,466	17,258	21,758	20,858
Central America	312	339	335	335	335	335
Caribbean	92	92	94	94	94	94
South America	7,247	7,495	7,081	6,349	6,822	6,602
European Union - 28	671	473	703	883	797	769
Middle East	764	814	789	692	635	635
North Africa	847	763	754	755	756	755
Sub-Saharan Africa	24,790	24,708	22,472	27,678	25,509	21,377
East Asia	2,054	2,560	2,895	2,887	2,902	2,902
South Asia	6,116	5,404	5,661	5,553	5,645	5,645
Southeast Asia	54	55	57	55	55	55
Oceania	2,239	2,230	1,282	2,104	2,200	2,100
Others	176	209	354	224	100	191
Total	57,197	57,609	60,943	64,867	67,608	62,318
Domestic Consumption						
North America	12,016	12,896	12,427	9,029	13,043	12,597
Central America	320	325	325	330	340	340
Caribbean	92	92	94	94	94	94
South America	6,104	6,076	5,789	5,749	5,972	5,747
European Union - 28	760	795	880	995	880	870
Middle East	789	1,052	894	865	685	685
North Africa	908	756	793	755	756	755
Sub-Saharan Africa	24,889	24,914	23,137	27,670	26,139	22,541
East Asia	3,771	5,221	7,951	13,911	10,960	10,710
South Asia	6,148	5,283	5,334	5,235	5,825	5,825
Southeast Asia	68	68	64	95	65	65
Oceania	1,105	1,105	905	505	1,205	1,105
Others	55	80	75	75	55	75
Total	57,025	58,663	58,668	65,308	66,019	61,409
Ending Stocks						
North America	1,001	670	1,511	806	1,893	1,893
Central America	23	30	33	38	28	28
South America	718	1,146	1,427	1,187	1,068	1,142
European Union - 28	13	5	18	23	12	17
Middle East	56	65	47	39	39	39
North Africa	60	66	68	69	74	74
Sub-Saharan Africa	1,876	2,073	1,647	2,026	1,614	1,387
East Asia	451	413	627	736	658	608
South Asia	206	109	364	593	443	443
Oceania	230	195	187	136	131	131
Others	17	25	76	69	14	55
Total	4,651	4,797	6,005	5,722	5,974	5,817

NOTES: Regional definitions appear on last page of this circular. Imports are reported on a trade year basis. All other data are reported using local marketing years.

World Oats Trade
October/ September Year, Thousand Metric Tons

	2011/ 12	2012/ 13	2013/ 14	2014/ 15	2015/ 16 Mar	2015/ 16 Apr
TY Exports						
Argentina	13	2	2	2	5	5
Australia	174	240	270	270	350	300
Canada	1,763	1,351	1,732	1,729	1,600	1,600
Chile	106	41	49	84	75	75
European Union	176	126	291	231	230	230
Russia	18	4	6	14	20	20
Ukraine	2	2	6	46	70	70
Others	7	10	14	8	10	10
Subtotal	2,259	1,776	2,370	2,384	2,360	2,310
United States	28	18	29	23	30	30
World Total	2,287	1,794	2,399	2,407	2,390	2,340
TY Imports						
Albania	0	0	0	3	5	5
Algeria	9	7	12	23	30	30
Bosnia and Herzegovina	3	2	3	4	5	5
Canada	11	9	27	12	10	10
China	68	87	116	162	250	200
Colombia	1	1	2	2	5	5
Ecuador	22	19	21	21	20	20
European Union	3	4	3	4	5	5
Japan	54	51	46	47	50	50
Mexico	134	108	93	86	100	100
Norway	49	36	38	2	40	40
Serbia	2	2	2	2	5	5
South Africa	11	11	19	50	25	25
Switzerland	56	44	51	49	50	50
Turkey	4	0	0	3	5	5
Others	15	6	8	8	5	5
Subtotal	442	387	441	478	610	560
Unaccounted	115	52	92	170	180	180
United States	1,730	1,355	1,866	1,759	1,600	1,600
World Total	2,287	1,794	2,399	2,407	2,390	2,340

TY= Trade Year, see Endnotes.

World Oats Production, Consumption, and Stocks
Local Marketing Years, Thousand Metric Tons

	2011/ 12	2012/ 13	2013/ 14	2014/ 15	2015/ 16 Mar	2015/ 16 Apr
Production						
Algeria	67	110	110	110	110	110
Argentina	345	496	445	525	485	553
Australia	1,262	1,121	1,255	1,087	1,300	1,300
Belarus	448	422	352	522	400	400
Brazil	354	361	380	300	350	350
Canada	3,158	2,830	3,906	2,979	3,430	3,430
Chile	451	680	610	421	470	470
China	600	600	580	600	600	600
European Union	7,927	7,909	8,380	7,854	7,640	7,524
Kazakhstan	258	200	305	226	244	244
Mexico	51	84	90	90	90	90
Norway	231	232	214	236	236	236
Russia	5,332	4,027	4,932	5,267	4,550	4,527
Turkey	218	210	210	210	210	210
Ukraine	506	630	467	610	490	498
Others	372	315	318	296	349	349
Subtotal	21,580	20,227	22,554	21,333	20,954	20,891
United States	728	892	938	1,019	1,300	1,300
World Total	22,308	21,119	23,492	22,352	22,254	22,191
Total Consumption						
Algeria	75	119	118	126	140	140
Argentina	350	500	425	525	500	550
Australia	1,100	925	950	875	900	950
Belarus	450	400	375	500	400	400
Brazil	350	350	375	295	340	340
Canada	1,361	1,592	1,660	1,673	1,650	1,650
Chile	400	600	570	355	375	375
China	625	675	700	750	875	825
European Union	7,800	7,700	8,075	7,675	7,675	7,575
Kazakhstan	225	225	275	225	245	245
Mexico	185	195	185	175	190	190
Norway	270	295	245	245	270	270
Russia	5,000	4,300	4,900	5,200	4,600	4,600
Turkey	215	215	215	215	215	215
Ukraine	500	600	475	600	430	430
Others	519	451	491	482	519	519
Subtotal	19,589	19,217	20,254	19,933	19,466	19,416
United States	2,499	2,743	2,757	2,424	2,828	2,741
World Total	22,088	21,960	23,011	22,357	22,294	22,157
Ending Stocks						
Argentina	55	49	67	65	45	63
Australia	134	60	105	57	117	107
Canada	805	446	1,054	681	871	871
Chile	25	61	45	27	46	47
China	127	139	135	147	122	122
European Union	795	901	894	858	589	582
Russia	485	203	230	289	219	196
Others	225	221	199	179	177	182
Subtotal	2,651	2,080	2,729	2,303	2,186	2,170
United States	797	527	359	780	860	947
World Total	3,448	2,607	3,088	3,083	3,046	3,117

Regional Oats Imports, Production, Consumption, and Stocks

Thousand Metric Tons

	2011/ 12	2012/ 13	2013/ 14	2014/ 15	Mar 2015/ 16	Apr 2015/ 16
TY Imports						
North America	1,875	1,472	1,986	1,857	1,710	1,710
South America	31	26	29	30	30	30
European Union - 28	3	4	3	4	5	5
Other Europe	110	84	94	60	105	105
Former Soviet Union - 12	7	0	2	1	0	0
Middle East	4	0	0	3	5	5
North Africa	9	7	12	23	30	30
Sub-Saharan Africa	11	11	19	50	25	25
East Asia	122	138	162	209	300	250
Oceania	0	0	0	0	0	0
Total	2,172	1,742	2,307	2,237	2,210	2,160
Production						
North America	3,937	3,806	4,934	4,088	4,820	4,820
South America	1,191	1,577	1,478	1,274	1,366	1,434
European Union - 28	7,927	7,909	8,380	7,854	7,640	7,524
Other Europe	373	365	348	369	372	372
Former Soviet Union - 12	6,549	5,285	6,062	6,631	5,690	5,675
Middle East	218	210	210	210	210	210
North Africa	163	166	156	147	166	166
Sub-Saharan Africa	57	60	59	55	55	55
East Asia	602	602	582	602	601	601
Oceania	1,291	1,139	1,283	1,122	1,334	1,334
Total	22,308	21,119	23,492	22,352	22,254	22,191
Domestic Consumption						
North America	4,045	4,530	4,602	4,272	4,668	4,581
South America	1,167	1,515	1,447	1,235	1,306	1,356
European Union - 28	7,800	7,700	8,075	7,675	7,675	7,575
Other Europe	478	474	434	434	472	472
Former Soviet Union - 12	6,180	5,531	6,031	6,531	5,681	5,681
Middle East	215	215	215	215	215	215
North Africa	172	175	164	163	196	196
Sub-Saharan Africa	53	72	95	105	80	80
East Asia	685	730	750	800	925	875
Oceania	1,129	943	978	910	934	984
Total	21,924	21,885	22,791	22,340	22,152	22,015
Ending Stocks						
North America	1,605	974	1,416	1,463	1,733	1,820
South America	93	128	129	105	109	128
European Union - 28	795	901	894	858	589	582
Other Europe	48	27	41	38	43	43
Former Soviet Union - 12	592	332	346	397	311	296
Middle East	17	12	7	4	7	4
North Africa	1	1	1	1	1	1
Sub-Saharan Africa	29	28	11	11	11	11
East Asia	134	144	138	149	125	125
Oceania	134	60	105	57	117	107
Total	3,448	2,607	3,088	3,083	3,046	3,117

NOTES: Regional definitions appear on last page of this circular. Imports are reported on a trade year basis. All other data are reported using local marketing years.

World Rye Trade
October/ September Year, Thousand Metric Tons

	2011/ 12	2012/ 13	2013/ 14	2014/ 15	2015/ 16 Mar	2015/ 16 Apr
TY Exports						
Belarus	25	25	5	5	5	5
Canada	159	178	97	89	100	100
European Union	59	122	201	167	150	150
Russia	284	79	83	121	100	50
Ukraine	9	16	59	13	20	20
Others	4	0	0	0	0	0
Subtotal	540	420	445	395	375	325
United States	8	7	6	3	5	5
World Total	548	427	451	398	380	330
TY Imports						
European Union	302	68	96	96	70	70
Israel	11	34	33	18	25	25
Japan	46	27	37	22	25	15
Korea, South	11	12	8	4	10	10
Norway	11	21	16	5	15	15
Russia	0	25	5	5	5	5
Switzerland	2	9	6	6	5	5
Others	9	4	1	6	0	0
Subtotal	392	200	202	162	155	145
Unaccounted	-18	6	45	-26	25	-15
United States	174	221	204	262	200	200
World Total	548	427	451	398	380	330

TY= Trade Year, see Endnotes.

World Rye Production, Consumption, and Stocks
Local Marketing Years, Thousand Metric Tons

	2011/ 12	2012/ 13	2013/ 14	2014/ 15	2015/ 16 Mar	2015/ 16 Apr
Production						
Argentina	45	40	52	97	61	61
Belarus	801	1,082	648	867	800	800
Canada	241	337	223	218	225	225
European Union	6,900	8,763	10,151	8,868	7,960	7,816
Russia	2,967	2,132	3,360	3,279	2,100	2,084
Turkey	366	370	350	350	350	350
Ukraine	579	676	638	475	390	394
Others	137	146	126	144	121	121
Subtotal	12,036	13,546	15,548	14,298	12,007	11,851
United States	154	166	194	183	292	292
World Total	12,190	13,712	15,742	14,481	12,299	12,143
Total Consumption						
Argentina	45	40	52	97	61	61
Belarus	750	1,000	650	850	800	800
Canada	101	127	107	134	123	123
European Union	7,400	8,700	9,650	8,900	7,850	7,850
Israel	11	34	33	18	25	25
Kazakhstan	30	50	40	65	37	37
Norway	27	26	28	20	27	27
Russia	2,850	2,000	3,100	3,250	2,150	2,175
Turkey	375	375	350	350	350	350
Ukraine	625	625	625	475	400	400
Others	161	139	126	104	112	103
Subtotal	12,346	13,146	14,766	14,272	11,911	11,907
United States	311	387	424	406	481	481
World Total	12,657	13,533	15,190	14,678	12,392	12,388
Ending Stocks						
Belarus	110	167	160	172	167	167
Canada	25	46	44	42	44	44
European Union	747	795	1,204	1,090	1,110	976
Kazakhstan	3	3	8	4	2	4
Russia	129	153	344	264	140	128
Turkey	24	18	18	24	23	24
Ukraine	132	166	128	106	76	80
Others	5	7	4	3	1	2
Subtotal	1,175	1,355	1,910	1,705	1,563	1,425
United States	11	10	7	15	50	50
World Total	1,186	1,365	1,917	1,720	1,613	1,475

Regional Rye Imports, Production, Consumption, and Stocks

Thousand Metric Tons

	2011/ 12	2012/ 13	2013/ 14	2014/ 15	Mar 2015/ 16	Apr 2015/ 16
TY Imports						
North America	174	221	204	262	200	200
South America	0	0	0	0	0	0
European Union - 28	302	68	96	96	70	70
Other Europe	14	32	23	11	20	20
Former Soviet Union - 12	5	27	5	5	5	5
Middle East	14	34	33	24	25	25
Sub-Saharan Africa	0	0	0	0	0	0
East Asia	57	39	45	26	35	25
Oceania	0	0	0	0	0	0
Total	566	421	406	424	355	345
Production						
North America	395	503	417	401	517	517
South America	49	47	59	105	69	69
European Union - 28	6,900	8,763	10,151	8,868	7,960	7,816
Other Europe	62	46	53	52	51	51
Former Soviet Union - 12	4,375	3,940	4,689	4,682	3,327	3,315
Middle East	366	370	350	350	350	350
Sub-Saharan Africa	3	3	3	3	3	3
East Asia	0	0	0	0	0	0
Oceania	40	40	20	20	22	22
Total	12,190	13,712	15,742	14,481	12,299	12,143
Domestic Consumption						
North America	412	514	531	540	604	604
South America	49	47	59	105	69	69
European Union - 28	7,400	8,700	9,650	8,900	7,850	7,850
Other Europe	76	78	77	66	71	71
Former Soviet Union - 12	4,255	3,675	4,415	4,640	3,387	3,412
Middle East	386	409	383	368	375	375
Sub-Saharan Africa	2	3	3	3	3	3
East Asia	66	37	48	27	35	26
Oceania	40	40	19	20	22	22
Total	12,686	13,503	15,185	14,669	12,416	12,432
Ending Stocks						
North America	36	56	51	57	94	94
South America	0	0	0	0	0	0
European Union - 28	747	795	1,204	1,090	1,110	976
Other Europe	0	0	0	0	0	0
Former Soviet Union - 12	374	489	640	546	385	379
Middle East	24	18	18	24	23	24
Sub-Saharan Africa	0	0	0	0	0	0
East Asia	5	7	4	3	1	2
Oceania	0	0	0	0	0	0
Total	1,186	1,365	1,917	1,720	1,613	1,475

NOTES: Regional definitions appear on last page of this circular. Imports are reported on a trade year basis. All other data are reported using local marketing years.



HISTORICAL DATA SERIES FOR SELECTED REGIONS AND COUNTRIES

CONTENTS

European Union: Grain Supply and Demand	37
China: Grain Supply and Demand	38
Other Europe: Grain Supply and Demand	39
Former Soviet Union: Grain Supply and Demand.....	40
Wheat Supply and Disappearance: Selected Exporters	44
Corn Supply and Disappearance: Selected Exporters.....	46
Barley Supply and Disappearance: Selected Exporters	48
Sorghum Supply and Disappearance: Selected Exporters.....	49
U.S. Grains: Supply and Distribution.....	50
Total Wheat and Coarse Grains: Supply and Demand	51
World Wheat and Coarse Grains: Supply and Demand	52
World Corn and Barley: Supply and Demand	53
World Rice: Supply and Demand	54

European Union: Grain Supply and Demand

Wheat and Coarse Grains Millions of Metric Tons/ Hectares

	Area Harvested	Yield	Production	Imports	Exports	Feed Dom.	Domestic Consumption	Ending Stocks
Wheat								
2004/05	26.2	5.6	147.7	7.1	14.7	59.3	123.9	28.3
2005/06	26.0	5.1	132.9	6.8	15.7	63.0	128.2	24.1
2006/07	24.7	5.1	125.7	5.2	13.9	60.2	126.2	14.8
2007/08	24.9	4.9	120.8	6.8	12.4	52.4	117.2	12.8
2008/09	26.8	5.7	151.9	7.7	25.4	60.5	127.6	19.4
2009/10	26.0	5.4	139.7	5.4	22.3	57.5	125.6	16.6
2010/11	26.0	5.3	136.7	4.6	23.1	52.5	122.8	11.9
2011/12	25.8	5.3	138.2	7.4	16.7	57.5	127.2	13.5
2012/13	26.0	5.2	133.9	5.3	22.8	51.0	119.3	10.7
2013/14	25.9	5.6	144.6	4.0	32.0	49.0	117.3	9.9
2014/15	26.7	5.9	156.8	6.0	35.4	54.0	123.5	13.8
2015/16	26.8	6.0	160.0	6.3	32.0	59.0	128.8	19.3
Coarse Grains								
2004/05	33.9	5.0	169.1	3.0	4.8	118.9	155.2	25.6
2005/06	33.2	4.5	149.5	2.7	4.3	112.4	150.7	22.8
2006/07	32.4	4.3	140.0	8.1	4.5	112.9	150.6	15.7
2007/08	32.6	4.3	138.7	20.3	4.5	121.6	157.1	13.1
2008/09	34.0	4.8	164.9	3.1	5.7	116.1	154.2	21.3
2009/10	32.9	4.8	157.6	2.9	3.0	114.8	152.4	26.3
2010/11	30.2	4.7	142.9	8.5	6.2	116.9	154.6	16.9
2011/12	30.2	5.0	149.9	7.0	6.5	113.2	151.5	15.7
2012/13	31.4	4.7	145.9	11.8	7.4	113.7	153.1	13.1
2013/14	31.4	5.1	158.9	16.3	8.6	122.4	164.1	15.5
2014/15	30.7	5.6	170.5	9.0	14.0	121.5	162.9	18.1
2015/16	30.1	5.0	150.7	15.5	11.0	117.5	158.8	14.5
Wheat and Coarse Grains								
2004/05	60.1	5.3	316.8	10.0	19.5	178.2	279.1	54.0
2005/06	59.1	4.8	282.3	9.4	20.0	175.4	278.9	46.9
2006/07	57.0	4.7	265.7	13.2	18.5	173.1	276.8	30.5
2007/08	57.5	4.5	259.5	27.1	16.9	174.1	274.2	25.9
2008/09	60.9	5.2	316.9	10.8	31.1	176.6	281.8	40.7
2009/10	58.9	5.0	297.3	8.2	25.3	172.3	278.0	42.9
2010/11	56.2	5.0	279.5	13.1	29.3	169.4	277.5	28.8
2011/12	56.0	5.1	288.1	14.3	23.3	170.7	278.7	29.3
2012/13	57.3	4.9	279.9	17.1	30.2	164.7	272.3	23.8
2013/14	57.3	5.3	303.5	20.2	40.7	171.4	281.4	25.4
2014/15	57.4	5.7	327.3	14.9	49.4	175.5	286.4	31.9
2015/16	56.8	5.5	310.7	21.8	43.0	176.5	287.6	33.8

China: Grain Supply and Demand

Wheat and Coarse Grains Millions of Metric Tons/ Hectares

	Area Harvested	Yield	Production	Imports	Exports	Feed Dom.	Domestic Consumption	Ending Stocks
Wheat								
2004/05	21.6	4.3	92.0	6.7	1.2	4.0	102.0	38.8
2005/06	22.8	4.3	97.4	1.1	1.4	3.5	101.5	34.5
2006/07	23.6	4.6	108.5	0.4	2.8	4.0	102.0	38.6
2007/08	23.7	4.6	109.3	0.0	2.8	8.0	106.0	39.1
2008/09	23.6	4.8	112.5	0.5	0.7	8.0	105.5	45.8
2009/10	24.3	4.7	115.1	1.4	0.9	10.0	107.0	54.4
2010/11	24.3	4.7	115.2	0.9	0.9	13.0	110.5	59.1
2011/12	24.3	4.8	117.4	2.9	1.0	24.0	122.5	55.9
2012/13	24.3	5.0	121.0	3.0	1.0	25.0	125.0	54.0
2013/14	24.1	5.1	121.9	6.8	0.9	16.0	116.5	65.3
2014/15	24.1	5.2	126.2	1.9	0.8	16.0	116.5	76.1
2015/16	24.1	5.4	130.2	3.0	1.0	10.5	112.0	96.3
Coarse Grains								
2004/05	28.0	4.9	138.3	2.1	7.6	100.3	141.1	37.6
2005/06	28.8	5.1	147.8	2.3	3.8	103.5	147.1	36.9
2006/07	31.1	5.1	159.0	1.2	5.5	105.0	153.5	38.0
2007/08	31.9	5.0	159.2	1.2	0.9	106.7	157.9	39.5
2008/09	32.2	5.4	172.4	1.7	0.2	109.1	161.2	52.2
2009/10	33.4	5.1	169.8	3.8	0.2	119.1	173.3	52.3
2010/11	34.6	5.3	183.8	2.7	0.2	128.8	188.4	50.1
2011/12	35.5	5.6	198.6	7.9	0.1	132.0	196.2	60.4
2012/13	37.1	5.7	212.2	5.6	0.1	146.1	209.7	68.4
2013/14	38.3	5.9	225.4	12.4	0.0	157.8	223.5	82.7
2014/15	39.2	5.7	222.8	25.7	0.0	158.8	229.1	102.0
2015/16	40.2	5.8	231.6	17.0	0.1	167.4	239.7	110.8
Wheat and Coarse Grains								
2004/05	49.6	4.6	230.2	8.8	8.8	104.3	243.1	76.4
2005/06	51.6	4.8	245.3	3.4	5.2	107.0	248.6	71.4
2006/07	54.7	4.9	267.4	1.5	8.2	109.0	255.5	76.6
2007/08	55.6	4.8	268.5	1.2	3.7	114.7	263.9	78.6
2008/09	55.8	5.1	284.9	2.1	0.9	117.1	266.7	98.0
2009/10	57.6	4.9	284.9	5.2	1.1	129.1	280.3	106.7
2010/11	58.9	5.1	299.0	3.6	1.1	141.8	298.9	109.2
2011/12	59.8	5.3	316.0	10.9	1.1	156.0	318.7	116.3
2012/13	61.3	5.4	333.2	8.6	1.1	171.1	334.7	122.3
2013/14	62.4	5.6	347.3	19.2	0.9	173.8	340.0	147.9
2014/15	63.3	5.5	349.0	27.6	0.8	174.8	345.6	178.1
2015/16	64.3	5.6	361.8	20.0	1.1	177.9	351.7	207.1

Other Europe: Grain Supply and Demand
Wheat and Coarse Grains Millions of Metric Tons/ Hectares

	Area Harvested	Yield	Production	Imports	Exports	Feed Dom.	Domestic Consumption	Ending Stocks
Wheat								
2004/05	1.1	4.3	4.6	1.4	0.3	0.9	5.2	1.3
2005/06	1.0	3.8	3.8	1.4	0.2	0.9	5.1	1.1
2006/07	1.0	3.6	3.5	1.5	0.3	0.7	4.6	1.2
2007/08	1.0	3.8	3.7	1.9	0.5	1.0	4.8	1.5
2008/09	0.9	4.4	4.0	1.7	0.4	1.2	5.1	1.7
2009/10	1.0	3.9	3.8	1.7	0.5	1.0	4.9	1.7
2010/11	0.9	3.7	3.2	1.7	0.6	0.8	4.7	1.3
2011/12	0.9	4.2	3.6	1.9	0.5	1.0	4.9	1.4
2012/13	0.9	4.0	3.4	1.6	0.7	1.0	4.7	1.1
2013/14	0.9	4.4	4.1	1.9	1.3	1.1	4.8	0.9
2014/15	0.9	4.2	3.9	1.8	0.7	1.1	4.8	1.1
2015/16	0.9	4.5	4.0	1.9	1.1	1.1	4.9	1.0
Coarse Grains								
2004/05	2.1	5.0	10.4	0.5	0.6	8.4	9.5	1.5
2005/06	2.1	4.8	10.1	0.6	1.3	8.5	9.7	1.3
2006/07	2.0	4.9	9.8	0.8	0.9	8.5	9.6	1.3
2007/08	2.0	3.4	6.9	0.9	0.1	6.8	7.9	1.1
2008/09	2.1	4.6	9.7	0.6	1.5	7.6	8.7	1.1
2009/10	2.0	4.9	9.7	0.7	1.4	7.5	8.7	1.4
2010/11	2.0	5.0	10.0	0.7	2.0	7.3	8.7	1.5
2011/12	2.1	4.6	9.5	0.8	2.4	7.0	8.4	1.0
2012/13	2.1	3.2	6.6	0.7	0.6	5.9	7.1	0.6
2013/14	2.0	4.4	8.8	0.9	1.8	6.3	7.7	0.8
2014/15	1.9	5.7	10.6	0.8	3.1	6.5	7.9	1.2
2015/16	1.8	4.9	8.9	0.9	1.7	6.6	8.1	1.2
Wheat and Coarse Grains								
2004/05	3.2	4.8	15.1	1.9	0.9	9.3	14.8	2.8
2005/06	3.1	4.5	13.9	2.0	1.4	9.4	14.8	2.4
2006/07	3.0	4.5	13.3	2.3	1.2	9.2	14.2	2.5
2007/08	3.0	3.5	10.6	2.7	0.6	7.8	12.6	2.6
2008/09	3.0	4.6	13.7	2.3	1.9	8.8	13.8	2.8
2009/10	3.0	4.5	13.5	2.4	1.9	8.5	13.7	3.2
2010/11	2.9	4.6	13.2	2.4	2.6	8.1	13.4	2.7
2011/12	2.9	4.5	13.1	2.7	2.8	8.1	13.2	2.5
2012/13	2.9	3.4	10.0	2.4	1.3	7.0	11.8	1.7
2013/14	2.9	4.4	12.9	2.7	3.1	7.4	12.5	1.7
2014/15	2.8	5.2	14.5	2.5	3.7	7.6	12.7	2.2
2015/16	2.7	4.8	13.0	2.8	2.8	7.7	13.0	2.2

Former Soviet Union: Grain Supply and Demand
Wheat and Coarse Grains Millions of Metric Tons/ Hectares

	Area Harvested	Yield	Production	Imports	Exports	Feed Dom.	Domestic Consumption	Ending Stocks
Wheat								
2009/10	52.6	2.2	114.0	5.4	37.3	26.6	78.3	26.0
2010/11	45.8	1.8	81.0	5.5	13.9	24.4	75.6	23.1
2011/12	49.7	2.3	115.0	8.0	39.7	28.4	80.0	26.4
2012/13	44.0	1.8	77.8	7.2	25.4	21.6	71.7	14.3
2013/14	47.7	2.2	103.9	7.5	37.2	22.7	72.8	15.7
2014/15	46.7	2.4	112.7	7.7	40.2	24.7	75.9	20.0
2015/16	49.0	2.4	117.6	7.7	46.4	25.8	78.1	20.9
Coarse Grains								
2009/10	27.2	2.5	67.6	0.4	15.0	39.0	55.0	7.4
2010/11	21.9	2.2	47.5	1.1	8.8	28.4	41.8	5.5
2011/12	27.0	2.9	78.6	1.0	24.6	38.6	54.4	6.2
2012/13	27.5	2.5	68.2	0.7	19.9	35.6	50.2	5.0
2013/14	29.4	3.0	87.8	0.8	30.8	40.0	55.7	7.1
2014/15	30.2	3.0	91.6	0.8	33.9	41.9	57.9	7.7
2015/16	28.2	2.9	82.5	0.8	29.6	40.4	55.7	5.7

Former Soviet Union: Grain Supply and Demand (Wheat)

Millions of Tons/ Hectares

Country Mktg Year	Area Harvested	Yield	Production	MY Imports	MY Exports	Feed and Residual	Total Consumption	Ending Stocks
Former Soviet Union - 12								
Kazakhstan								
2012/13	12.4	0.8	9.8	0.0	6.3	2.0	6.8	2.9
2013/14	13.0	1.1	13.9	0.0	8.1	2.0	6.8	2.0
2014/15	11.9	1.1	13.0	0.6	5.5	2.0	6.8	3.2
2015/16	11.6	1.2	13.7	0.1	7.0	2.1	6.9	3.2
Russia								
2012/13	21.3	1.8	37.7	1.2	11.3	11.9	33.6	4.9
2013/14	23.4	2.2	52.1	0.9	18.6	12.5	34.1	5.2
2014/15	23.6	2.5	59.1	0.3	22.8	13.0	35.5	6.3
2015/16	25.6	2.4	61.0	0.7	23.0	14.0	37.0	8.0
Ukraine								
2012/13	5.6	2.8	15.8	0.0	7.2	3.1	11.4	2.6
2013/14	6.6	3.4	22.3	0.1	9.8	3.4	11.5	3.7
2014/15	6.3	3.9	24.8	0.0	11.3	4.0	12.0	5.2
2015/16	7.1	3.8	27.3	0.1	15.5	4.5	12.5	4.5
Uzbekistan								
2012/13	1.4	4.8	6.7	1.9	0.4	1.7	8.0	1.6
2013/14	1.4	4.9	6.8	2.2	0.3	1.9	8.4	1.9
2014/15	1.4	5.1	7.2	2.2	0.2	2.2	8.9	2.2
2015/16	1.4	5.1	7.2	2.4	0.2	2.2	9.3	2.3
Other Former Soviet Union - 12								
2012/13	3.2	2.4	7.8	4.1	0.3	2.9	12.0	2.2
2013/14	3.4	2.6	8.8	4.3	0.4	2.9	12.0	2.9
2014/15	3.4	2.6	8.8	4.5	0.4	3.5	12.7	3.1
2015/16	3.3	2.5	8.3	4.5	0.7	3.0	12.4	2.9
Total Former Soviet Union - 12								
2012/13	44.0	1.8	77.8	7.2	25.4	21.6	71.7	14.3
2013/14	47.7	2.2	103.9	7.5	37.2	22.7	72.8	15.7
2014/15	46.7	2.4	112.7	7.7	40.2	24.7	75.9	20.0
2015/16	49.0	2.4	117.6	7.7	46.4	25.8	78.1	20.9

Former Soviet Union: Grain Supply and Demand (Barley)

Millions of Tons/ Hectares

Country Mktg Year	Area Harvested	Yield	Production	MY Imports	MY Exports	Feed and Residual	Total Consumption	Ending Stocks
Former Soviet Union - 12								
Kazakhstan								
2012/13	1.6	0.9	1.5	0.0	0.2	1.2	1.4	0.2
2013/14	1.8	1.4	2.5	0.0	0.4	1.7	2.0	0.3
2014/15	1.9	1.3	2.4	0.0	0.5	1.7	2.0	0.2
2015/16	2.0	1.3	2.7	0.0	0.8	1.7	2.0	0.1
Russia								
2012/13	7.6	1.8	14.0	0.3	2.2	7.7	12.1	0.7
2013/14	8.0	1.9	15.4	0.2	2.7	8.3	12.7	0.9
2014/15	8.8	2.3	20.0	0.0	5.3	9.2	14.1	1.5
2015/16	8.0	2.1	17.1	0.1	4.0	9.1	13.9	0.8
Ukraine								
2012/13	3.3	2.1	6.9	0.0	2.1	3.5	5.1	0.9
2013/14	3.2	2.3	7.6	0.0	2.5	3.5	5.0	1.0
2014/15	3.2	3.0	9.5	0.0	4.5	3.0	4.5	1.5
2015/16	3.0	2.9	8.8	0.0	4.4	3.0	4.5	1.3
Uzbekistan								
2012/13	0.1	3.2	0.2	0.0	0.0	0.2	0.3	0.0
2013/14	0.1	3.2	0.2	0.0	0.0	0.2	0.3	0.0
2014/15	0.1	3.2	0.2	0.1	0.0	0.2	0.3	0.0
2015/16	0.1	3.2	0.2	0.1	0.0	0.3	0.3	0.0
Other Former Soviet Union - 12								
2012/13	1.2	2.8	3.3	0.1	0.0	2.7	3.5	0.4
2013/14	1.3	2.6	3.4	0.1	0.0	2.7	3.5	0.4
2014/15	1.3	2.7	3.4	0.2	0.1	2.8	3.6	0.4
2015/16	1.4	2.6	3.6	0.2	0.1	3.0	3.8	0.2
Total Former Soviet Union - 12								
2012/13	13.8	1.9	26.0	0.4	4.6	15.2	22.3	2.2
2013/14	14.5	2.0	29.2	0.3	5.6	16.4	23.5	2.6
2014/15	15.3	2.3	35.6	0.3	10.3	16.9	24.5	3.6
2015/16	14.5	2.2	32.4	0.3	9.3	17.0	24.5	2.5

Former Soviet Union: Grain Supply and Demand (Corn)

Millions of Tons/ Hectares

Country Mktg Year	Area Harvested	Yield	Production	MY Imports	MY Exports	Feed and Residual	Total Consumption	Ending Stocks
Former Soviet Union - 12								
Kazakhstan								
2012/13	0.1	5.0	0.5	0.0	0.0	0.4	0.5	0.0
2013/14	0.1	5.3	0.6	0.0	0.0	0.5	0.6	0.0
2014/15	0.1	5.3	0.7	0.0	0.0	0.5	0.6	0.1
2015/16	0.1	5.3	0.7	0.0	0.1	0.5	0.6	0.2
Russia								
2012/13	1.9	4.2	8.2	0.1	1.9	5.6	6.4	0.3
2013/14	2.3	5.0	11.6	0.1	4.2	6.6	7.5	0.3
2014/15	2.6	4.4	11.3	0.0	3.2	7.2	8.1	0.4
2015/16	2.7	4.9	13.2	0.1	4.1	8.0	8.9	0.6
Ukraine								
2012/13	4.4	4.8	20.9	0.0	12.7	6.8	8.1	1.2
2013/14	4.8	6.4	30.9	0.1	20.0	8.3	9.7	2.5
2014/15	4.6	6.2	28.5	0.0	19.7	8.0	9.4	1.9
2015/16	4.1	5.7	23.3	0.1	15.7	7.0	8.4	1.2
Uzbekistan								
2012/13	0.0	3.4	0.1	0.0	0.0	0.1	0.1	0.0
2013/14	0.0	3.4	0.1	0.0	0.0	0.1	0.1	0.0
2014/15	0.0	3.4	0.1	0.0	0.0	0.1	0.1	0.0
2015/16	0.0	3.4	0.1	0.0	0.0	0.1	0.1	0.0
Other Former Soviet Union - 12								
2012/13	1.0	2.7	2.6	0.2	0.4	2.6	3.0	0.5
2013/14	1.0	3.8	3.7	0.3	0.6	2.9	3.2	0.6
2014/15	0.9	3.7	3.2	0.4	0.3	2.9	3.2	0.7
2015/16	0.9	3.1	2.8	0.4	0.2	2.8	3.2	0.6
Total Former Soviet Union - 12								
2012/13	7.4	4.4	32.3	0.3	15.0	15.5	18.1	2.0
2013/14	8.3	5.7	46.9	0.4	24.8	18.4	21.1	3.4
2014/15	8.3	5.3	43.8	0.5	23.2	18.7	21.5	3.1
2015/16	7.8	5.1	40.1	0.5	20.0	18.5	21.2	2.4

Wheat Supply and Disappearance: Selected Exporters

Million Metric Tons/ Hectares

Country Mktg Year	Area Harvested	Yield	Production	MY Imports	MY Exports	Feed and Residual	Total Consumption	Ending Stocks
Wheat Competitors								
Argentina								
2011/12	5.2	3.0	15.5	0.0	12.9	0.1	6.0	0.7
2012/13	3.6	2.6	9.3	0.0	3.6	0.3	6.2	0.3
2013/14	3.5	3.0	10.5	0.0	2.3	0.1	6.1	2.5
2014/15	4.2	3.0	12.5	0.0	5.3	0.3	6.4	3.4
2015/16	3.8	3.0	11.3	0.0	7.5	0.3	6.4	0.9
Australia								
2011/12	13.9	2.2	29.9	0.1	24.7	3.2	6.5	7.1
2012/13	13.0	1.8	22.9	0.1	18.6	3.4	6.7	4.7
2013/14	12.6	2.0	25.3	0.2	18.6	3.6	7.0	4.6
2014/15	12.2	1.9	23.1	0.2	16.6	3.8	7.2	4.0
2015/16	12.8	1.9	24.5	0.2	17.0	3.8	7.2	4.4
Canada								
2011/12	8.6	3.0	25.3	0.5	17.4	4.7	9.9	5.9
2012/13	9.5	2.9	27.2	0.5	19.0	4.3	9.5	5.1
2013/14	10.4	3.6	37.5	0.5	23.3	4.2	9.4	10.4
2014/15	9.5	3.1	29.4	0.5	24.1	3.8	9.1	7.1
2015/16	9.6	2.9	27.6	0.5	22.0	3.6	8.8	4.4
European Union								
2011/12	25.8	5.3	138.2	7.4	16.7	57.5	127.2	13.5
2012/13	26.0	5.2	133.9	5.3	22.8	51.0	119.3	10.7
2013/14	25.9	5.6	144.6	4.0	32.0	49.0	117.3	9.9
2014/15	26.7	5.9	156.8	6.0	35.4	54.0	123.5	13.8
2015/16	26.8	6.0	160.0	6.3	32.0	59.0	128.8	19.3
Kazakhstan								
2011/12	13.7	1.7	22.7	0.0	11.8	2.6	7.6	6.2
2012/13	12.4	0.8	9.8	0.0	6.3	2.0	6.8	2.9
2013/14	13.0	1.1	13.9	0.0	8.1	2.0	6.8	2.0
2014/15	11.9	1.1	13.0	0.6	5.5	2.0	6.8	3.2
2015/16	11.6	1.2	13.7	0.1	7.0	2.1	6.9	3.2
Russia								
2011/12	24.8	2.3	56.2	0.6	21.6	15.5	38.0	10.9
2012/13	21.3	1.8	37.7	1.2	11.3	11.9	33.6	4.9
2013/14	23.4	2.2	52.1	0.9	18.6	12.5	34.1	5.2
2014/15	23.6	2.5	59.1	0.3	22.8	13.0	35.5	6.3
2015/16	25.6	2.4	61.0	0.7	23.0	14.0	37.0	8.0

Wheat Supply and Disappearance: Selected Exporters (Continued)

Million Metric Tons/ Hectares

Country Mktg Year	Area Harvested	Yield	Production	MY Imports	MY Exports	Feed and Residual	Total Consumption	Ending Stocks
Ukraine								
2011/12	6.7	3.4	22.3	0.1	5.4	6.1	15.0	5.4
2012/13	5.6	2.8	15.8	0.0	7.2	3.1	11.4	2.6
2013/14	6.6	3.4	22.3	0.1	9.8	3.4	11.5	3.7
2014/15	6.3	3.9	24.8	0.0	11.3	4.0	12.0	5.2
2015/16	7.1	3.8	27.3	0.1	15.5	4.5	12.5	4.5
Total Wheat Competitors								
2011/12	98.6	3.1	310.2	8.6	110.6	89.7	210.1	49.7
2012/13	91.4	2.8	256.6	7.1	88.7	76.0	193.4	31.2
2013/14	95.4	3.2	306.2	5.5	112.6	74.8	192.1	38.3
2014/15	94.4	3.4	318.7	7.6	121.0	80.9	200.5	43.0
2015/16	97.1	3.4	325.5	7.8	124.0	87.3	207.6	44.7

Corn Supply and Disappearance: Selected Exporters

Million Metric Tons/ Hectares

Country Mktg Year	Area Harvested	Yield	Production	MY Imports	MY Exports	Feed and Residual	Total Consumption	Ending Stocks
Argentina								
2007/08	3.4	6.5	22.0	0.0	14.8	4.9	6.8	2.1
2008/09	2.5	6.2	15.5	0.0	10.3	4.5	6.4	0.9
2009/10	3.0	8.3	25.0	0.0	16.5	5.0	6.9	2.5
2010/11	3.8	6.7	25.2	0.0	16.3	5.3	7.3	4.0
2011/12	3.6	5.8	21.0	0.0	17.1	4.8	7.0	0.9
2012/13	4.0	6.8	27.0	0.0	18.7	5.3	7.9	1.3
2013/14	3.4	7.6	26.0	0.0	17.1	5.8	8.8	1.4
2014/15	3.5	8.2	28.7	0.0	18.9	6.0	9.3	1.9
2015/16	3.5	8.0	28.0	0.0	19.0	6.0	9.3	1.6
Brazil								
2007/08	14.7	4.0	58.6	0.7	7.8	37.5	44.0	10.6
2008/09	14.1	3.6	51.0	1.1	7.1	38.5	45.5	10.1
2009/10	12.9	4.3	56.1	0.4	11.6	41.5	48.5	6.5
2010/11	13.8	4.2	57.4	0.8	8.4	43.0	50.0	6.3
2011/12	15.2	4.8	73.0	0.8	24.3	44.0	51.5	4.2
2012/13	15.8	5.2	81.5	0.9	24.9	44.5	52.5	9.2
2013/14	15.8	5.1	80.0	0.8	21.0	46.0	55.0	14.0
2014/15	15.8	5.4	85.0	0.4	34.5	48.0	57.0	7.9
2015/16	16.2	5.2	84.0	0.6	28.0	49.0	58.0	6.5
China								
2007/08	29.5	5.2	152.3	0.0	0.5	106.0	150.0	38.4
2008/09	29.9	5.6	165.9	0.0	0.2	108.0	153.0	51.2
2009/10	31.2	5.3	164.0	1.3	0.2	118.0	165.0	51.3
2010/11	32.5	5.5	177.2	1.0	0.1	128.0	180.0	49.4
2011/12	33.5	5.7	192.8	5.2	0.1	131.0	188.0	59.3
2012/13	35.0	5.9	205.6	2.7	0.1	144.0	200.0	67.6
2013/14	36.3	6.0	218.5	3.3	0.0	150.0	208.0	81.3
2014/15	37.1	5.8	215.6	5.5	0.0	140.0	202.0	100.5
2015/16	38.1	5.9	224.6	2.5	0.1	154.0	218.0	109.5
South Africa								
2007/08	3.3	4.0	13.2	0.0	2.2	4.8	10.1	1.4
2008/09	2.9	4.3	12.6	0.0	1.7	4.7	10.3	2.0
2009/10	3.3	4.1	13.4	0.0	2.1	4.9	10.6	2.8
2010/11	2.9	3.8	10.9	0.4	2.4	5.0	10.7	1.0
2011/12	3.1	4.1	12.8	0.0	1.8	5.0	10.7	1.3
2012/13	3.2	3.8	12.4	0.1	2.1	5.1	11.0	0.7

Corn Supply and Disappearance: Selected Exporters (Continued)

Million Metric Tons/ Hectares

Country Mktg Year	Area Harvested	Yield	Production	MY Imports	MY Exports	Feed and Residual	Total Consumption	Ending Stocks
2013/14	3.1	4.9	14.9	0.1	2.0	5.5	11.5	2.2
2014/15	3.0	3.5	10.6	2.0	0.7	6.1	11.8	2.3
2015/16	1.9	3.4	6.5	3.5	0.7	5.5	11.0	0.6
Total Corn Competitors								
2007/08	50.9	4.8	246.1	0.8	25.3	153.2	210.9	52.5
2008/09	49.4	5.0	245.0	1.2	19.3	155.7	215.2	64.2
2009/10	50.4	5.1	258.5	1.7	30.3	169.4	231.0	63.0
2010/11	52.9	5.1	270.8	2.2	27.3	181.3	248.0	60.7
2011/12	55.5	5.4	299.5	6.0	43.4	184.8	257.2	65.7
2012/13	58.1	5.6	326.5	3.7	45.8	198.9	271.4	78.7
2013/14	58.6	5.8	339.4	4.1	40.0	207.3	283.3	98.9
2014/15	59.4	5.7	340.0	7.9	54.1	200.1	280.1	112.6
2015/16	59.7	5.7	343.1	6.6	47.8	214.5	296.3	118.2

Barley Supply and Disappearance: Selected Exporters

Million Metric Tons/ Hectares

Country Mktg Year	Area Harvested	Yield	Production	MY Imports	MY Exports	Feed and Residual	Total Consumption	Ending Stocks
Australia								
2007/08	4.9	1.5	7.2	0.0	3.4	2.1	3.1	1.7
2008/09	5.0	1.6	8.0	0.0	3.2	2.9	4.0	2.4
2009/10	4.4	1.8	7.9	0.0	3.9	3.3	4.5	1.9
2010/11	3.7	2.2	8.0	0.0	4.7	3.0	4.2	1.0
2011/12	3.7	2.2	8.2	0.0	5.4	2.1	3.3	0.5
2012/13	3.6	2.1	7.5	0.0	4.5	1.8	3.0	0.5
2013/14	3.8	2.4	9.2	0.0	6.2	1.5	2.8	0.7
2014/15	3.8	2.1	8.0	0.0	5.2	1.6	2.9	0.6
2015/16	4.1	2.1	8.7	0.0	5.8	1.3	2.6	0.9
Canada								
2007/08	4.0	2.8	10.9	0.1	3.0	6.4	7.8	1.6
2008/09	3.5	3.4	11.8	0.0	1.5	7.6	8.9	3.0
2009/10	2.9	3.3	9.5	0.0	1.3	7.5	8.7	2.5
2010/11	2.4	3.2	7.6	0.0	1.2	6.3	7.5	1.5
2011/12	2.4	3.3	7.9	0.0	1.3	5.7	6.9	1.2
2012/13	2.8	2.9	8.0	0.0	1.4	5.7	6.8	1.0
2013/14	2.7	3.9	10.2	0.0	1.6	6.5	7.7	2.0
2014/15	2.1	3.3	7.1	0.1	1.5	5.2	6.5	1.2
2015/16	2.4	3.5	8.2	0.1	1.4	5.4	6.6	1.6
European Union								
2007/08	13.9	4.2	57.8	0.3	3.8	38.9	54.5	5.7
2008/09	14.6	4.5	65.8	0.3	3.6	41.7	57.3	11.0
2009/10	14.0	4.5	62.4	0.1	1.1	41.7	56.8	15.6
2010/11	12.5	4.3	53.7	0.2	4.9	41.3	56.6	7.9
2011/12	11.9	4.3	51.9	0.5	3.0	35.8	51.2	6.1
2012/13	12.5	4.4	54.9	0.1	5.0	35.5	51.0	5.0
2013/14	12.4	4.8	59.7	0.0	5.7	38.0	53.4	5.6
2014/15	12.4	4.9	60.6	0.1	9.5	35.5	51.0	5.8
2015/16	12.1	5.0	61.3	0.3	9.2	37.0	52.6	5.6

Sorghum Supply and Disappearance: Selected Exporters
 Million Metric Tons/ Hectares

Country Mktg Year	Area Harvested	Yield	Production	MY Imports	MY Exports	Feed and Residual	Total Consumption	Ending Stocks
Argentina								
2007/08	0.6	4.7	2.9	0.0	1.2	1.0	1.2	0.7
2008/09	0.5	3.7	1.7	0.0	1.1	1.0	1.1	0.2
2009/10	0.8	4.8	3.6	0.0	1.8	1.7	1.9	0.2
2010/11	1.0	4.4	4.4	0.0	1.7	1.7	1.9	0.9
2011/12	1.0	4.2	4.2	0.0	3.1	1.7	1.9	0.2
2012/13	1.1	4.5	4.7	0.0	1.8	2.0	2.3	0.8
2013/14	1.0	4.4	4.4	0.0	1.3	2.3	2.7	1.2
2014/15	0.8	4.5	3.5	0.0	0.9	2.4	2.8	1.0
2015/16	0.9	4.4	3.7	0.0	1.0	2.4	2.8	0.9
Australia								
2007/08	0.9	4.0	3.8	0.0	0.8	2.2	2.2	0.8
2008/09	0.8	3.5	2.7	0.0	1.0	1.8	1.8	0.7
2009/10	0.5	3.0	1.5	0.0	0.3	1.2	1.2	0.7
2010/11	0.6	3.1	1.9	0.0	0.9	1.4	1.4	0.4
2011/12	0.7	3.4	2.2	0.0	1.3	1.1	1.1	0.2
2012/13	0.6	3.4	2.2	0.0	1.2	1.1	1.1	0.2
2013/14	0.5	2.4	1.3	0.0	0.4	0.9	0.9	0.2
2014/15	0.7	3.2	2.1	0.0	1.7	0.5	0.5	0.1
2015/16	0.7	3.0	2.1	0.0	1.0	1.1	1.1	0.1

U.S. Grains Supply and Distribution: Wheat, Corn, Sorghum, Barley, Oats, Rye, and Rice

Thousand Metric Tons/ Hectares

	Area Harvested	Yield	Rough Production	Production	Imports	TY Imports	Exports	TY Exports	Feed Dom. Consumption	Domestic Consumption	Ending Stocks
Wheat											
2013/14	18,345	3	nr	58,105	4,710	4,785	32,001	31,518	6,196	34,287	16,065
2014/15	18,771	3	nr	55,147	4,068	3,987	23,249	22,752	3,326	31,554	20,477
2015/16	19,058	3	nr	55,840	3,266	3,200	21,092	21,300	3,810	31,932	26,559
Corn											
2013/14	35,390	10	nr	351,272	909	727	48,783	50,684	128,023	292,965	31,292
2014/15	33,644	11	nr	361,091	804	809	47,359	46,773	135,234	301,854	43,974
2015/16	32,678	11	nr	345,486	1,270	1,250	41,912	42,000	133,356	301,532	47,286
Sorghum											
2013/14	2,665	4	nr	9,966	2	3	5,362	5,717	2,351	4,127	864
2014/15	2,590	4	nr	10,988	10	27	8,965	9,249	2,048	2,429	468
2015/16	3,177	5	nr	15,158	127	110	8,001	7,400	2,921	6,097	1,655
Barley											
2013/14	1,230	4	nr	4,719	408	522	311	336	1,435	4,775	1,791
2014/15	1,011	4	nr	3,953	513	430	312	292	935	4,234	1,711
2015/16	1,258	4	nr	4,666	435	450	305	300	1,089	4,404	2,103
Oats											
2013/14	408	2	nr	938	1,674	1,866	23	29	1,693	2,757	359
2014/15	419	2	nr	1,019	1,852	1,759	26	23	1,306	2,424	780
2015/16	516	3	nr	1,300	1,637	1,600	29	30	1,637	2,741	947
Rye											
2013/14	113	2	nr	194	234	204	7	6	184	424	7
2014/15	104	2	nr	183	237	262	6	3	164	406	15
2015/16	146	2	nr	292	229	200	5	5	235	481	50
Rice, Milled											
2013/14	999	9	8,615	6,117	734	755	3,005	2,998	nr	3,977	1,025
2014/15	1,187	8	10,079	7,106	783	758	3,207	3,472	nr	4,155	1,552
2015/16	1,042	8	8,724	6,107	746	775	3,175	3,325	nr	3,853	1,377

Notes: Wheat Trade Year (TY) statistics are on July/June years. Barley, corn, sorghum, rye and oats Trade Year (TY) statistics are on Oct/Sept years. Rice Trade Year (TY) statistics are for the subsequent calendar year; 'Imports' and 'Exports' columns contain data on the local marketing year: wheat, barley, oats and rye are June/May; corn and sorghum are Sept/Aug; rice is Aug/July.

Total Wheat and Coarse Grains: Supply and Demand

Millions of Metric Tons/ Hectares

	Area Harvested	Yield	Production	TY Exports	Feed Dom.	Domestic Consumpti	Ending Stocks
Wheat and Coarse Grains							
1986/87	565.2	2.4	1,347.9	174.7	645.9	1,299.7	469.1
1987/88	544.3	2.4	1,285.9	202.2	656.6	1,329.8	422.8
1988/89	541.9	2.2	1,218.1	203.3	619.5	1,301.8	339.1
1989/90	548.2	2.4	1,327.5	208.9	644.5	1,346.3	320.3
1990/91	545.7	2.6	1,417.6	190.1	669.8	1,369.7	368.3
1991/92	543.3	2.5	1,355.7	207.5	653.5	1,366.1	357.9
1992/93	545.9	2.6	1,431.7	205.2	664.1	1,388.3	398.5
1993/94	536.1	2.5	1,356.6	188.2	657.1	1,389.1	366.0
1994/95	534.1	2.6	1,392.8	200.1	670.5	1,395.6	363.2
1995/96	527.2	2.5	1,338.7	187.5	641.8	1,381.6	320.3
1996/97	545.7	2.7	1,490.2	198.3	674.6	1,441.7	368.7
1997/98	535.2	2.8	1,490.8	190.4	685.7	1,443.4	416.1
1998/99	520.2	2.8	1,481.6	198.7	685.4	1,448.7	449.0
1999/00	506.2	2.9	1,465.8	214.0	690.0	1,470.2	444.1
2000/01	509.3	2.8	1,446.9	204.9	700.4	1,472.3	418.7
2001/02	511.7	2.9	1,480.2	208.3	713.7	1,495.8	403.2
2002/03	504.7	2.9	1,445.1	209.2	711.7	1,506.5	341.8
2003/04	511.2	2.9	1,472.9	205.8	718.0	1,535.5	279.1
2004/05	514.8	3.2	1,642.8	214.4	756.2	1,586.1	335.7
2005/06	517.4	3.1	1,599.9	222.5	758.2	1,617.2	318.5
2006/07	519.1	3.1	1,584.6	229.8	749.7	1,630.2	272.9
2007/08	534.6	3.2	1,692.6	244.7	764.5	1,675.7	289.9
2008/09	539.4	3.3	1,791.7	253.6	774.3	1,721.9	359.7
2009/10	533.5	3.4	1,803.7	254.1	782.4	1,767.3	396.1
2010/11	523.4	3.3	1,747.5	250.1	773.7	1,783.6	360.0
2011/12	537.8	3.4	1,853.2	287.1	808.0	1,853.2	360.0
2012/13	532.0	3.4	1,794.5	279.5	807.7	1,813.4	341.1
2013/14	540.4	3.7	1,994.6	327.2	860.5	1,930.4	405.3
2014/15	544.7	3.7	2,028.9	334.9	881.1	1,975.6	458.5
2015/16	544.9	3.7	1,994.5	335.8	895.0	1,968.6	484.4

Notes: Wheat and coarse grains trade data are on July/June years through 1975/76. From 1976/77 to the present, coarse grains data are on an Oct/Sept trade year.

World Wheat and Coarse Grains: Supply and Demand

Millions of Metric Tons/ Hectares

	Area Harvested	Yield	Production	TY Exports	Feed Dom.	Domestic Consumption	Ending Stocks
Wheat							
1993/94	221.1	2.5	558.6	101.7	111.0	552.5	183.3
1994/95	213.4	2.5	523.1	101.5	103.0	541.7	164.7
1995/96	216.7	2.5	537.5	99.2	96.9	545.6	156.6
1996/97	227.1	2.6	581.3	104.0	101.4	572.6	165.3
1997/98	226.4	2.7	610.2	104.5	106.2	576.5	199.0
1998/99	219.2	2.7	590.5	102.0	109.4	579.0	210.5
1999/00	212.7	2.8	587.5	111.9	104.6	587.6	210.3
2000/01	215.6	2.7	583.3	102.1	111.2	587.1	206.5
2001/02	214.5	2.7	583.9	107.9	112.0	586.6	203.7
2002/03	213.9	2.7	569.7	106.5	116.1	603.9	169.5
2003/04	208.0	2.7	555.3	103.5	101.7	588.9	135.9
2004/05	215.8	2.9	626.8	113.2	110.7	606.3	156.4
2005/06	217.5	2.8	618.8	114.1	117.7	621.8	153.4
2006/07	212.3	2.8	596.7	115.3	113.1	616.5	133.6
2007/08	217.1	2.8	612.6	116.0	104.8	617.5	128.7
2008/09	224.1	3.1	683.7	143.2	124.4	643.2	169.2
2009/10	225.6	3.0	687.0	135.3	122.3	653.0	203.2
2010/11	216.9	3.0	649.3	134.1	116.8	653.9	198.7
2011/12	220.9	3.2	696.9	153.7	148.7	697.8	197.7
2012/13	215.8	3.1	658.3	147.3	138.1	679.1	176.9
2013/14	219.6	3.3	714.9	162.4	126.5	697.9	193.9
2014/15	220.5	3.3	725.4	161.4	130.9	704.6	214.8
2015/16	223.8	3.3	733.1	162.5	132.9	708.7	239.3
Coarse Grains							
1993/94	315.0	2.5	798.0	86.5	546.1	836.6	182.7
1994/95	320.8	2.7	869.7	98.6	567.6	853.9	198.5
1995/96	310.5	2.6	801.2	88.3	544.9	836.0	163.7
1996/97	318.6	2.9	908.9	94.3	573.3	869.1	203.5
1997/98	308.8	2.9	880.6	85.8	579.5	866.9	217.1
1998/99	301.0	3.0	891.1	96.7	575.9	869.7	238.6
1999/00	293.6	3.0	878.4	102.1	585.4	882.6	233.8
2000/01	293.7	2.9	863.6	102.8	589.3	885.2	212.3
2001/02	297.2	3.0	896.3	100.4	601.6	909.1	199.5
2002/03	290.9	3.0	875.4	102.7	595.6	902.6	172.3
2003/04	303.2	3.0	917.5	102.3	616.3	946.7	143.1
2004/05	299.0	3.4	1,016.0	101.2	645.5	979.8	179.4
2005/06	299.9	3.3	981.1	108.4	640.5	995.4	165.1
2006/07	306.8	3.2	988.0	114.5	636.6	1,013.7	139.4
2007/08	317.5	3.4	1,080.0	128.7	659.8	1,058.2	161.2
2008/09	315.3	3.5	1,108.0	110.4	649.9	1,078.7	190.6
2009/10	307.9	3.6	1,116.7	118.8	660.1	1,114.3	192.9
2010/11	306.5	3.6	1,098.2	116.0	656.9	1,129.7	161.4
2011/12	316.8	3.6	1,156.3	133.4	659.2	1,155.4	162.3
2012/13	316.3	3.6	1,136.2	132.2	669.5	1,134.3	164.2
2013/14	320.8	4.0	1,279.7	164.8	733.9	1,232.5	211.4
2014/15	324.2	4.0	1,303.4	173.4	750.2	1,271.1	243.7
2015/16	321.1	3.9	1,261.3	173.3	762.0	1,259.9	245.1

Notes: Wheat and coarse grains trade data are on July/June years through 1975/76. From 1976/77 to the present, coarse grains data are on an Oct/Sept trade year.

World Corn and Barley: Supply and Demand

Millions of Metric Tons/ Hectares

	Area Harvested	Yield	Productio n	TY Exports	Feed Dom.	Domestic Consumpti	Ending Stocks
Corn							
1993/94	130.8	3.6	476.0	57.4	342.0	509.3	129.4
1994/95	135.2	4.1	559.4	71.9	371.6	535.5	153.3
1995/96	135.0	3.8	516.5	64.8	365.3	536.6	133.3
1996/97	141.5	4.2	593.0	66.6	387.9	560.0	166.3
1997/98	136.3	4.2	574.4	63.1	400.6	573.5	167.2
1998/99	139.0	4.4	606.1	68.7	404.4	582.0	191.4
1999/00	138.9	4.4	608.4	72.0	422.6	605.3	194.4
2000/01	137.1	4.3	591.8	75.9	427.4	610.9	175.3
2001/02	137.1	4.4	601.8	72.7	436.4	625.6	151.5
2002/03	137.8	4.4	603.9	76.8	433.4	628.6	126.8
2003/04	141.6	4.4	627.5	79.0	445.8	649.7	104.6
2004/05	145.3	4.9	716.9	76.0	476.0	690.4	131.1
2005/06	145.4	4.8	700.7	82.5	479.6	708.3	123.5
2006/07	150.5	4.8	716.3	91.3	480.4	731.0	108.8
2007/08	160.2	5.0	795.5	98.2	501.4	776.5	127.8
2008/09	158.7	5.0	799.8	83.6	482.0	784.1	143.5
2009/10	158.3	5.2	824.8	92.7	492.9	827.4	140.9
2010/11	164.5	5.1	835.5	91.7	503.6	852.8	123.6
2011/12	172.0	5.2	889.6	103.7	508.6	884.8	128.3
2012/13	177.6	4.9	869.5	100.5	519.0	864.4	133.4
2013/14	180.3	5.5	990.5	130.4	571.1	948.9	175.0
2014/15	179.8	5.6	1,012.8	128.0	583.8	980.3	207.6
2015/16	177.5	5.5	972.1	133.8	598.4	970.8	208.9
Barley							
1993/94	73.2	2.3	169.0	18.8	123.8	169.1	34.9
1994/95	72.2	2.2	160.7	15.3	120.9	165.6	30.0
1995/96	66.4	2.1	141.2	13.4	107.8	150.7	20.5
1996/97	64.3	2.4	153.2	17.9	106.3	149.5	24.1
1997/98	63.8	2.4	153.9	12.8	104.1	145.8	32.2
1998/99	56.7	2.4	136.0	17.8	99.5	139.3	29.0
1999/00	52.1	2.4	127.4	17.8	94.0	132.5	23.9
2000/01	52.9	2.5	133.0	16.3	94.6	134.3	22.6
2001/02	55.7	2.6	143.4	17.2	95.5	136.8	29.2
2002/03	54.7	2.5	134.3	16.3	94.7	135.9	27.6
2003/04	58.4	2.4	142.7	14.8	103.1	146.8	23.5
2004/05	57.4	2.7	152.1	17.0	100.0	142.5	33.1
2005/06	55.2	2.5	136.2	17.4	97.3	141.0	28.3
2006/07	56.3	2.4	136.8	14.6	98.4	143.6	21.5
2007/08	55.7	2.4	132.7	18.5	91.0	133.7	20.6
2008/09	55.0	2.8	155.0	18.2	100.4	143.8	31.7
2009/10	54.2	2.8	150.9	17.3	101.4	145.2	37.4
2010/11	47.1	2.6	123.0	15.2	91.3	136.1	24.3
2011/12	49.2	2.7	133.3	21.4	91.7	135.0	22.7
2012/13	49.9	2.6	128.8	22.2	88.6	131.1	20.4
2013/14	50.6	2.9	144.2	23.8	97.2	140.7	23.9
2014/15	49.5	2.8	141.0	30.1	96.6	140.8	24.1
2015/16	49.8	3.0	147.2	26.8	98.7	146.6	24.6

Notes: Coarse grains trade data are on July/June years through 1975/76. From 1976/77 to the present, coarse grains data are on an Oct/Sept trade year.

World Rice: Supply and Demand

Millions of Metric Tons/ Hectares

	Area Harvested	Yield	Rough Productio n	Productio n	TY Exports	Domestic Consumpti	Ending Stocks
Rice, Milled							
1986/87	144.8	3.2	464.6	316.1	12.9	310.4	103.3
1987/88	141.4	3.3	464.8	315.1	11.4	313.1	105.3
1988/89	146.6	3.3	490.8	332.1	14.0	325.7	111.7
1989/90	147.8	3.5	510.4	345.3	11.7	336.3	120.6
1990/91	147.0	3.5	519.4	351.4	12.3	345.3	126.7
1991/92	147.5	3.5	522.8	353.2	14.4	353.2	126.7
1992/93	146.5	3.6	524.2	354.0	14.9	357.5	123.2
1993/94	145.3	3.6	526.1	354.7	16.6	358.9	119.0
1994/95	147.3	3.7	540.0	364.1	20.8	365.5	117.6
1995/96	148.4	3.7	547.3	368.8	19.7	368.3	118.1
1996/97	150.1	3.8	565.3	381.4	18.9	379.2	120.3
1997/98	151.7	3.8	575.2	387.4	27.6	380.0	127.7
1998/99	153.1	3.8	587.0	394.9	24.8	388.7	134.0
1999/00	155.9	3.9	608.8	409.3	22.8	400.3	143.1
2000/01	152.4	3.9	594.1	399.3	24.3	395.6	146.7
2001/02	151.3	3.9	594.3	399.5	27.9	413.3	132.9
2002/03	146.9	3.8	563.1	378.2	27.6	408.1	103.0
2003/04	149.3	3.9	585.4	392.5	27.3	413.8	81.7
2004/05	151.8	3.9	596.4	400.8	28.9	408.5	74.0
2005/06	153.9	4.0	622.2	417.8	29.0	415.4	76.5
2006/07	154.5	4.0	625.0	420.1	31.8	421.2	75.4
2007/08	154.8	4.2	643.5	433.6	29.5	428.1	80.9
2008/09	158.2	4.2	668.7	449.4	29.4	437.6	92.6
2009/10	155.8	4.2	656.2	440.7	31.8	438.4	95.0
2010/11	158.4	4.2	672.1	450.4	36.5	445.3	100.0
2011/12	160.7	4.3	697.2	467.6	40.0	460.8	106.8
2012/13	158.6	4.4	704.4	472.4	39.5	468.6	110.6
2013/14	161.8	4.4	713.4	478.4	44.1	481.6	107.4
2014/15	160.7	4.4	713.8	478.8	42.7	482.5	103.6
2015/16	157.5	4.5	701.5	470.6	41.7	484.1	90.2

Notes: Stocks, exports and consumption are expressed on a milled basis in marketing years.

ENDNOTES TO GRAIN: WORLD MARKETS AND TRADE

REGIONAL TABLES

North America: Canada, Mexico, the United States.

Central America: Belize, Costa Rica, El Salvador, Guatemala, Honduras, Nicaragua, Panama.

Caribbean: Anguilla, Antigua and Barbuda, Aruba, Bahamas, Barbados, Bermuda, British Virgin Islands, Cayman Islands, Cuba, Dominica, Dominican Republic, French West Indies, Grenada, Guadeloupe, Haiti, Jamaica and Dep, Leeward-Windward Islands, Martinique, Montserrat, Netherlands Antilles, Puerto Rico, Kitts and Nevis, St. Lucia, St. Vincent and the Grenadines, Trinidad and Tobago, Turks and Caicos Islands, Virgin Islands of the U.S.

South America: Argentina, Bolivia, Brazil, Chile, Colombia, Ecuador, Falkland Islands (Islas Malvinas), French Guiana, Guyana, Paraguay, Peru, Suriname, Uruguay, Venezuela.

EU: Austria, Belgium/Luxembourg, Bulgaria, Croatia, Cyprus, Czech Republic, Denmark, Estonia, Finland, France, Germany, Greece, Hungary, Ireland, Italy, Latvia, Lithuania, Malta, Netherlands, Poland, Portugal, Romania, Slovakia, Slovenia, Spain, Sweden, United Kingdom.

Other Europe: Albania, Azores, Bosnia and Herzegovina, Former Yugoslavia, Gibraltar, Iceland, Macedonia, Montenegro, Norway, Serbia, Switzerland.

Former Soviet Union: Armenia, Azerbaijan, Belarus, Georgia, Kazakhstan, Kyrgyzstan, Moldova, Russia, Tajikistan, Turkmenistan, Ukraine, Uzbekistan.

Middle East: Bahrain, Iran, Iraq, Israel, Jordan, Kuwait, Lebanon, Oman, Qatar, Saudi Arabia, Syria, Turkey, United Arab Emirates, Yemen.

North Africa: Algeria, Egypt, Libya, Morocco, Tunisia.

Sub-Saharan Africa: all African countries except North Africa.

East Asia: China, Hong Kong, Japan, South Korea, North Korea, Macau, Mongolia, Taiwan.

South Asia: Afghanistan, Bangladesh, Bhutan, India, Nepal, Pakistan, Sri Lanka, Maldives.

Southeast Asia: Brunei, Burma, Cambodia, Indonesia, Laos, Malaysia, Philippines, Singapore, Thailand, Vietnam.

Oceania: Australia, Fiji, New Zealand, Papua New Guinea.

OTHER NOTES

Local Marketing Years (LMY): LMY refers to the 12-month period at the onset of the main harvest, when the crop is marketed (i.e., consumed, traded, or stored). The year first listed begins a country's LMY for that commodity (2015/16 starts in 2015); except for summer grains in certain Southern Hemisphere countries and for rice in selected countries, where the second year begins the LMY (2015/16 starts in 2016). **Key exporter LMY's are:**

Wheat	Corn	Barley	Sorghum
Argentina (Dec/Nov)	Argentina (Mar/Feb)	Australia (Nov/Oct)	Argentina (Mar/Feb)
Australia (Oct/Sep)	Brazil (Mar/Feb)	Canada (Aug/Jul)	Australia (Mar/Feb)
Canada (Aug/Jul)	China (Oct/Sep)	European Union (Jul/Jun)	United States (Sep/Aug)
China (Jul/Jun)	South Africa (May/Apr)	Russia (Jul/Jun)	
European Union (Jul/Jun)	United States (Sep/Aug)	Ukraine (Jul/Jun)	
India (Apr/Mar)		United States (Jun/May)	
Kazakhstan (Jul/Jun)			
Russia (Jul/Jun)			
Turkey (Jun/May)			
Ukraine (Jul/Jun)			
United States (Jun/May)			

For a complete list of local marketing years, please see the FAS website (<http://www.fas.usda.gov/psdonline/psdAvailability.aspx>).

Stocks: Unless otherwise stated, stock data are based on an aggregate of differing local marketing years and should not be construed as representing world stock levels at a fixed point in time.

Consumption: World totals for consumption reflect total utilization, including food, seed, industrial, feed, and waste; as well as differences in local marketing year imports and local marketing year exports. Consumption statistics for regions and individual countries, however, reflect food, seed, industrial, feed, and waste only.

Trade: All PSD tables are balanced on the different local marketing years. All trade tables contain Trade Year (TY) data which puts all countries on a uniform, 12-month period for analytical comparisons: wheat is July/June; coarse grains, corn, barley, sorghum, oats, and rye are Oct/Sept; and rice is calendar year.

EU Consolidation: The trade figures starting from 1999/00 represent the European Union (Croatia plus the former EU-27) and exclude all intra-trade. For the years 1960/61 through 1998/99, figures are the EU-15 and also exclude all intra-trade. EU-15 member states' data for grains are no longer maintained in the official USDA database. Data for the individual NMS-10, plus Bulgaria, Romania, and Croatia, exists only prior to 1999/00.

Statistics: (1) Wheat trade statistics include wheat, flour, and selected pasta products on a grain equivalent basis. (2) Rice trade statistics include rough, brown, milled, and broken on a milled equivalent basis. (3) Coarse grains statistics include corn, barley, sorghum, oats, rye, millet, and mixed grains but exclude trade in barley malt, millet, and mixed grains.

Unaccounted: This term includes grain in transit, reporting discrepancies in some countries, and trade to countries outside the USDA database.

The Global Commodity Analysis Division, Office of Global Analysis, Foreign Agricultural Service, USDA, Washington, DC 20250, prepared this circular. Information is gathered from official statistics of foreign governments and other foreign source materials, reports of U.S. agricultural attachés and Foreign Service officers, office research, and related information. Further information may be obtained by writing the Division or telephoning (202) 720-3448.

Note: The previous report in this series was Grain: World Markets and Trade March 2016. For further details on world grain production, please see World Agricultural Production April 2016.

This circular is available in its entirety on the Internet via the Foreign Agricultural Service Home Page. The address is: <http://www.fas.usda.gov>

Questions may be directed to the following staff:

Teresa McKeivier	(202) 690-1151	Teresa.McKeivier@fas.usda.gov	Wheat
Daniel Archibald	(202) 720-9432	Dan.Archibald@fas.usda.gov	Wheat
Rachel Trego	(202) 720-1073	Rachel.Trego@fas.usda.gov	Rice
Kyle Bonsu	(202) 260-8370	Kyle.Bonsu@fas.usda.gov	Rice
Yoonhee Macke	(202) 690-4199	Yoonhee.Macke@fas.usda.gov	Coarse Grains
Andrew Sowell	(202) 720-0262	Andrew.Sowell@fas.usda.gov	Coarse Grains
Barrett Bumpas	(202) 692-0337	Barrett.Bumpas@fas.usda.gov	Coarse Grains