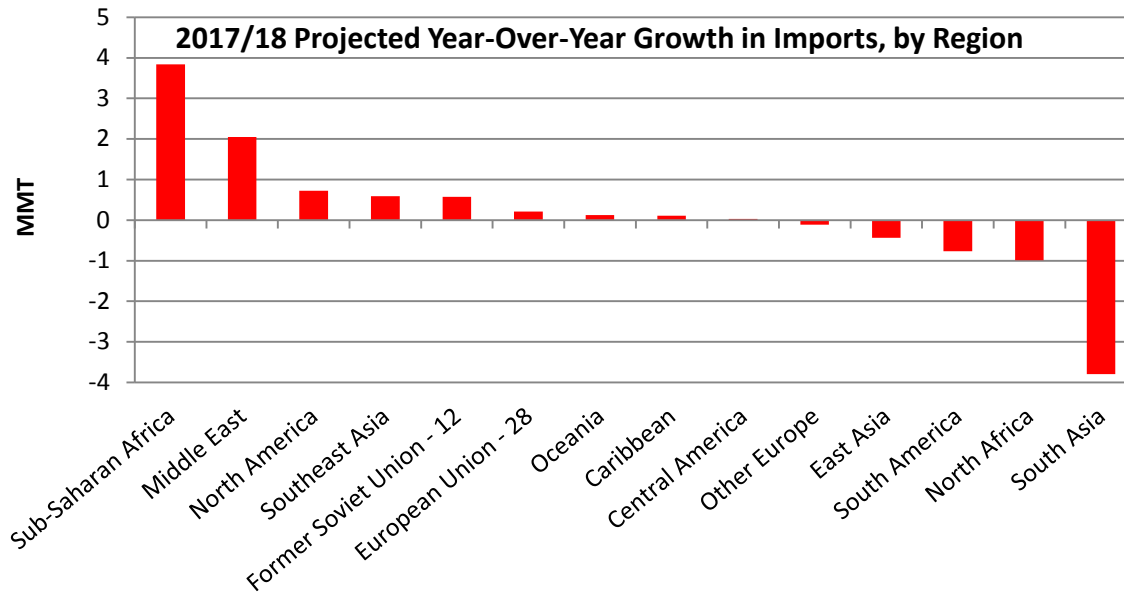




Grain: World Markets and Trade

Sub-Saharan Africa Drives Growth in Global Wheat Imports



Global wheat trade is forecast at a record for 2017/18, with Sub-Saharan Africa projected to have the strongest year-over-year import growth of any region. In fact, over the last decade as a whole, Sub-Saharan Africa has been a major driver of rising global wheat trade. Stagnant production and rapid consumption growth have been the main motivators of rising import demand in the region. Consumption is escalating on long-term trends of urbanization, rising incomes, and population growth. See page 5 from the November [Grain: World Markets and Trade](#) report for more information.

This year specifically, record global production and relatively low prices have further catalyzed import demand in Sub-Saharan Africa. Russia is an increasingly important supplier for the region as many of these markets are primarily focused on obtaining low-priced supplies. In light of Russia's record crop and large exportable surplus, Sub-Saharan Africa's demand growth has provided an outlet to absorb some of those excess supplies. See feature article on page 6 of this publication for more details.

After Sub-Saharan Africa, the region with the next largest projected growth in imports this year is the Middle East. There, higher imports are offsetting Iraq's lower crop quality and Turkey's diminished stocks. In contrast, the largest forecast reduction from 2016/17 is for South Asia on account of sharply lower imports for India due to its ample 2017 harvest. Also down from the previous year are imports for North Africa (larger crops for Algeria, Morocco, and Tunisia) and South America (reduced demand in Brazil).

TABLE OF CONTENTS

World Markets and Trade: Commentary and Current Data	
Wheat	4
Rice	11
Coarse Grains.....	19
Historical Data Series for Selected Regions and Countries.....	40
Endnotes to Grain: World Markets and Trade.....	59

The Foreign Agricultural Service (FAS) updates its production, supply and distribution (PSD) database for cotton, oilseeds, and grains at 12:00 p.m. on the day the *World Agricultural Supply and Demand Estimates* (WASDE) report is released. This circular is released by 12:15 p.m.

To download the tables in the publication, go to Production, Supply and Distribution Database (PSD Online): (<http://apps.fas.usda.gov/psdonline/psdHome.aspx>), scroll down to Reports, and Click the plus sign [+] next to Grains.

FAS Reports and Databases:

Current *World Markets and Trade* and *World Agricultural Production* Reports:

<http://apps.fas.usda.gov/psdonline/psdDataPublications.aspx>

Archives *World Markets and Trade* and *World Agricultural Production* Reports:

<http://usda.mannlib.cornell.edu/MannUsda/viewTaxonomy.do?taxonomyID=7>

Production, Supply and Distribution Database (PSD Online):

<http://apps.fas.usda.gov/psdonline/psdHome.aspx>

Global Agricultural Trade System (U.S. Exports and Imports):

<http://apps.fas.usda.gov/gats/default.aspx>

Export Sales Report:

<http://apps.fas.usda.gov/esrquery/>

Global Agricultural Information Network (Agricultural Attaché Reports):

<http://gain.fas.usda.gov/Pages/Default.aspx>

Other USDA Reports:

World Agricultural Supply and Demand Estimates (WASDE):

<http://www.usda.gov/oce/commodity/wasde/>

Economic Research Service:

<http://www.ers.usda.gov/topics/crops>

National Agricultural Statistics Service:

<http://www.nass.usda.gov/Publications/>

All Grain Summary Comparison
Million Metric Tons

Marketing Year	Wheat			Rice, Milled			Corn			
	2015/16	2016/17	2017/18	2015/16	2016/17	2017/18	2015/16	2016/17	2017/18	
Production										
United States	(Jun-May)	56.1	62.8	47.4	6.1	7.1	5.7	345.5	384.8	371.0
Other		679.1	687.9	712.4	466.8	479.1	481.8	626.7	690.7	665.1
World Total		735.2	750.7	759.8	472.9	486.2	487.5	972.2	1,075.5	1,036.1
Domestic Consumption										
United States	(Jun-May)	31.9	31.8	29.6	3.6	4.2	3.8	298.8	313.9	318.5
Other		676.6	703.0	713.3	462.5	471.3	475.8	688.7	720.5	744.7
World Total		708.5	734.8	742.9	466.1	475.5	479.6	987.5	1,034.4	1,063.2
Ending Stocks										
United States	(Jun-May)	26.6	32.1	29.0	1.5	1.5	1.1	44.1	58.3	55.4
Other		216.1	222.5	242.2	131.2	135.6	143.3	169.8	172.6	142.4
World Total		242.7	254.6	271.2	132.7	137.1	144.4	213.9	230.9	197.8
TY Imports										
United States	(Jun-May)	3.1	3.3	4.2	0.8	0.8	0.8	1.8	1.5	1.3
Other		165.6	175.9	177.2	36.8	43.8	44.7	136.6	138.1	145.9
World Total		168.7	179.2	181.4	37.6	44.6	45.5	138.4	139.6	147.2
TY Exports										
United States	(Jun-May)	21.8	29.5	24.5	3.4	3.4	3.2	51.2	55.5	56.0
Other		150.2	152.7	159.8	36.8	44.6	45.4	93.7	86.1	94.3
World Total		172.0	182.2	184.3	40.2	48.0	48.6	144.9	141.6	150.3

Note: Consumption in this table has not been adjusted for differences in marketing year imports and exports and therefore differs from global totals shown elsewhere. Marketing years for U.S. grains are: Wheat (Jun-May), Rice (Aug-Jul), Corn (Sep-Aug). 'Marketing Year' column is germane for U.S. wheat only.

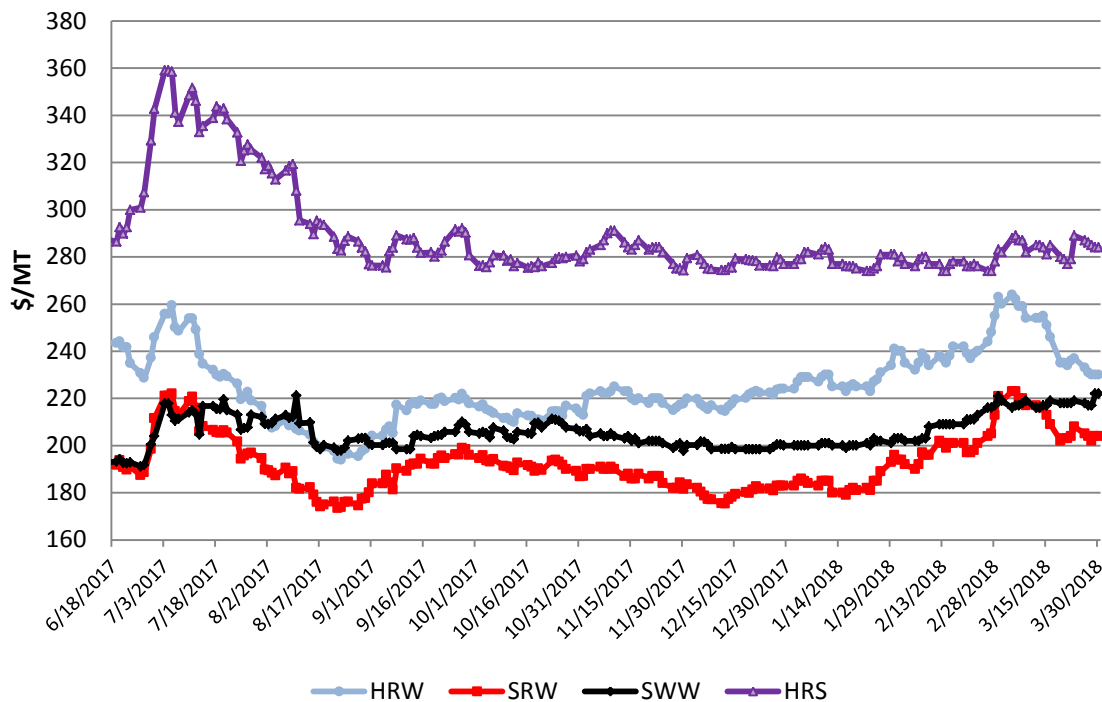
WHEAT: WORLD MARKETS AND TRADE

OVERVIEW

For 2017/18, record global production is raised slightly this month, mainly on a larger crop for Morocco. Global trade is forecast down fractionally but remains a record. Imports are forecast up for Algeria, Japan, Kenya, Philippines, and Turkey. Exports are projected higher for Argentina, Kazakhstan, and Russia but lower for Australia and the European Union. The U.S. season-average farm price is unchanged at \$4.65 per bushel.

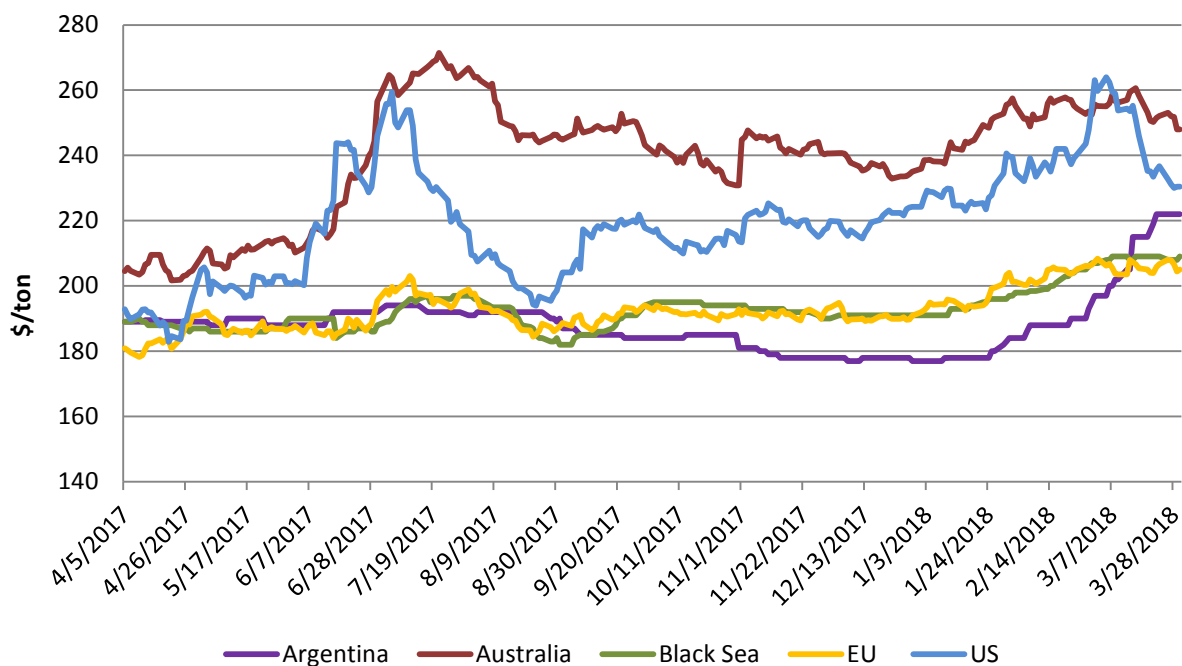
PRICES

U.S. Daily FOB Export Bids



Domestic: Overall, U.S. wheat prices were mixed during the month of March. Hard Red Winter (HRW) plunged \$25/ton to \$230 on continued pressure from abundant global supplies. Beneficial rains fell across parts of the Central Plains, but the core HRW region remains in a drought. USDA published the first *Crop Progress* reports, indicating that the winter wheat crop is in well below-average-condition, particularly in Kansas, Oklahoma, and Texas (major HRW-producing states). Soft Red Winter (SRW) fell \$9/ton to \$204 amid generally favorable conditions for crop development. On the other hand, Hard Red Spring (HRS) advanced \$6/ton to \$284, underpinned by concerns about planting conditions in the Northern Plains. Soft White Wheat (SWW) gained \$5/ton to \$222.

International Daily FOB Export Bids



Month Ending	Argentina	Australia	Black Sea	EU	US
March	\$222	\$248	\$209	\$205	\$230
February	\$195	\$252	\$207	\$207	\$255
January	\$184	\$256	\$197	\$204	\$240

Month Ending Prices for Major Wheat Exporters

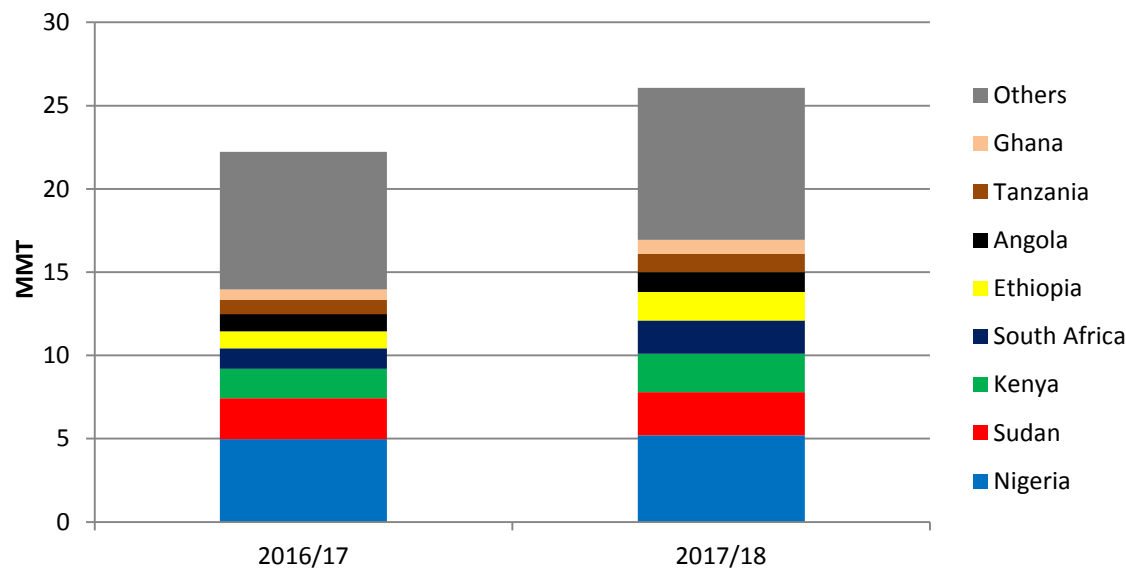
Source: IGC

*Note on FOB prices: Argentina- 12.0%, up river; Australia- average of Western Australia; Black Sea- milling; EU- France grade 1, Rouen; US- HRW 11.5% gulf

Global: Prices for Australia and U.S. wheat are relatively competitive against each other. The Black Sea region offers wheat at lower prices, which some importing countries choose to purchase despite the lower protein content. Since mid-February, prices have been narrowing between the Black Sea region, Argentina, and the high-quality exporters. Argentina wheat prices have gradually increased on tightening supplies as much of its surplus has been exported in recent months. The recent favorable weather condition in some areas of the U.S. HRW growing region has supported a decline in prices. Competition in the market has pressured prices for Australia and the United States lower. These origins remain at a premium, but some buyers are more inclined to pay a premium for higher quality wheat when the price spread is narrow due to efficiencies gained in processing.

FEATURE

Growth in Demand Seen Across Many Markets in Sub-Saharan Africa



As discussed on the cover of this publication, Sub-Saharan Africa is the region propelling year-to-year growth in global import demand in 2017/18. The major countries driving this change are:

- **Nigeria:** Imports are forecast up 5 percent from the previous year. In urban areas of the country, wheat is generally more affordable and available than locally grown staples such as cassava, millet, and yam. Furthermore, wheat has been used for humanitarian aid to insecure farming communities.
- **Sudan:** Imports are forecast up 6 percent, offsetting a smaller crop. Consumption is forecast higher as implied by strong imports.
- **Kenya:** Imports are projected at 2.3 million tons, up 30 percent from last year based on rapid consumption growth and expansion in milling capacity.
- **South Africa:** Imports are forecast up more than 60 percent from the previous year as the latest crop was damaged by drought.
- **Ethiopia:** Imports are projected up nearly 70 percent as government tendering has increased to meeting growing demand and to rebuild wheat stocks.
- **Angola:** Imports are forecast at 1.2 million tons, which is up nearly 200,000 tons from the previous year. The country's milling capacity has expanded and consumption (as implied by the pace of trade) is growing rapidly.
- **Tanzania:** Imports are forecast at 1.1 million, up 30 percent from a year before. Rising demand for wheat products is met through imports as domestic production is less than 10 percent of consumption.
- A multitude of smaller markets, including **Ghana** and **Mauritania**, are also showing significant consumption growth, as indicated by rapid imports to-date.

TRADE CHANGES IN 2017/18 (1,000 MT)

Country	Attribute	Previous	Current	Change	Reason
Algeria	Imports	7,700	8,000	300	Larger-than-expected pace of trade
Argentina	Exports	14,000	14,500	500	Stronger-than-expected trade to date
Australia	Exports	17,500	17,000	-500	Competition from the Black Sea region
Brazil	Imports	7,800	7,000	-800	Slower-than-expected trade to date
	Exports	600	300	-300	Minimal shipments to date
Colombia	Imports	2,150	1,900	-250	Reduced demand for wheat in feeding
European Union	Exports	25,000	24,000	-1,000	Slow exports to date based on competition from Russia
Iran	Exports	550	800	250	Fast pace of flour exports and reduced competition for exports to Iraq
Japan	Imports	5,800	6,000	200	Stronger imports
Kazakhstan	Exports	7,500	8,000	500	Strong pace of trade and reports of larger stockholding than a year ago
Kenya	Imports	2,100	2,300	200	Fast growth in demand for wheat, as indicated by a rapid pace of trade
Morocco	Imports	4,800	4,000	-800	Larger crop and slow pace to date
Philippines	Imports	5,600	5,800	200	Higher consumption as indicated by stronger-than-expected imports
Russia	Exports	37,500	38,500	1,000	Nonstop exports based on favorable winter weather
Serbia	Exports	1,100	800	-300	Lack of competitiveness with Russian wheat and limited exports to date
Turkey	Imports	5,500	5,700	200	Larger-than-expected imports from Russia
	Exports	6,500	6,200	-300	Iraq recently imposed a \$60/ton duty on wheat flour imports from Turkey

World Wheat, Flour, and Products Trade
July/June Year, Thousand Metric Tons

	2013/14	2014/15	2015/16	2016/17	2017/18 Mar	2017/18 Apr
TY Exports						
Argentina	1,675	4,200	8,750	12,275	14,000	14,500
Australia	18,339	16,575	15,780	22,061	17,500	17,000
Canada	22,156	24,883	22,118	20,235	22,500	22,500
European Union	32,032	35,455	34,686	27,319	25,000	24,000
Kazakhstan	8,000	5,507	7,600	7,250	7,500	8,000
Mexico	1,322	1,104	1,568	1,119	1,200	1,200
Pakistan	750	700	600	600	1,200	1,200
Russia	18,609	22,800	25,543	27,809	37,500	38,500
Turkey	4,293	4,135	5,605	6,177	6,500	6,200
Ukraine	9,755	11,269	17,431	18,107	17,200	17,200
Others	14,019	12,249	10,514	9,802	9,809	9,469
Subtotal	130,950	138,877	150,195	152,754	159,909	159,769
United States	31,529	23,023	21,811	29,488	24,500	24,500
World Total	162,479	161,900	172,006	182,242	184,409	184,269
TY Imports						
Afghanistan	2,050	2,000	2,700	2,700	2,600	2,600
Algeria	7,484	7,257	8,153	8,414	7,700	8,000
Bangladesh	3,354	3,929	4,720	5,556	6,400	6,400
Brazil	7,061	5,869	5,922	7,788	7,800	7,000
China	6,773	1,926	3,476	4,410	4,000	4,000
Egypt	10,150	11,300	11,925	11,236	12,000	12,000
European Union	3,976	5,979	6,916	5,286	5,500	5,500
Indonesia	7,391	7,477	10,045	10,176	12,500	12,500
Iraq	3,246	2,253	2,218	2,447	3,600	3,600
Japan	6,123	5,878	5,715	5,911	5,800	6,000
Kenya	1,473	1,507	1,634	1,774	2,100	2,300
Korea, South	4,288	3,942	4,420	4,667	4,400	4,400
Mexico	4,639	4,471	4,805	5,370	5,200	5,200
Morocco	3,928	4,086	4,503	5,191	4,800	4,000
Nigeria	4,580	4,244	4,410	4,972	5,200	5,200
Peru	1,853	1,922	1,879	1,961	2,100	2,100
Philippines	3,476	5,054	4,918	5,704	5,600	5,800
Saudi Arabia	3,441	3,499	2,931	3,716	3,300	3,300
South Africa	1,787	1,950	2,026	1,220	1,950	2,000
Sudan	2,664	2,632	2,021	2,458	2,600	2,600
Thailand	1,759	3,492	4,872	3,689	3,000	3,000
Turkey	4,147	5,960	4,405	4,542	5,500	5,700
Uzbekistan	2,224	2,230	2,662	2,700	2,800	2,800
Vietnam	2,157	2,292	3,070	5,546	4,200	4,200
Yemen	3,425	3,245	3,332	3,278	3,400	3,400
Others	51,989	50,489	51,974	55,221	53,531	53,596
Subtotal	155,438	154,883	165,652	175,933	177,581	177,196
Unaccounted	2,256	3,028	3,300	3,012	2,628	2,873
United States	4,785	3,989	3,054	3,297	4,200	4,200
World Total	162,479	161,900	172,006	182,242	184,409	184,269

TY=Trade Year, see Endnotes.

World Wheat Production, Consumption, and Stocks
Local Marketing Years, Thousand Metric Tons

	2013/14	2014/15	2015/16	2016/17	2017/18 Mar	2017/18 Apr
Production						
Argentina	10,500	13,930	11,300	18,400	18,000	18,000
Australia	25,303	23,743	22,275	30,363	21,500	21,500
Canada	37,530	29,420	27,594	31,729	30,000	30,000
China	121,930	126,208	130,190	128,845	129,770	129,770
Egypt	8,250	8,300	8,100	8,100	8,100	8,100
European Union	144,583	156,912	160,480	145,248	151,600	151,600
India	93,506	95,850	86,530	87,000	98,510	98,510
Iran	14,500	13,000	15,000	15,500	15,000	15,000
Kazakhstan	13,941	12,996	13,748	14,985	14,802	14,802
Morocco	6,934	5,116	8,064	2,731	6,250	7,092
Pakistan	24,211	25,979	25,086	25,633	26,500	26,600
Russia	52,091	59,080	61,044	72,529	84,992	84,992
Turkey	18,750	15,250	19,500	17,250	21,000	21,000
Ukraine	22,278	24,750	27,274	26,791	26,981	26,981
Uzbekistan	6,800	7,150	7,200	7,200	7,200	7,200
Others	55,895	55,340	55,703	55,545	51,213	51,233
Subtotal	657,002	673,024	679,088	687,849	711,418	712,380
United States	58,105	55,147	56,117	62,833	47,371	47,371
World Total	715,107	728,171	735,205	750,682	758,789	759,751
Total Consumption						
Algeria	9,850	10,050	10,250	10,350	10,450	10,450
Brazil	11,400	10,700	11,100	12,200	12,100	12,000
Canada	9,395	9,096	7,919	10,417	8,700	8,700
China	116,500	116,500	112,000	118,500	117,000	117,000
Egypt	18,500	19,100	19,200	19,400	19,700	19,700
European Union	117,300	124,677	129,850	128,000	128,750	130,900
India	93,848	93,102	88,551	97,120	98,000	97,310
Indonesia	7,165	7,365	9,100	10,000	11,300	12,100
Iran	16,800	17,100	17,300	17,500	18,350	17,700
Morocco	9,000	9,000	9,800	10,200	10,300	10,300
Pakistan	24,100	24,500	24,400	24,500	25,000	25,000
Russia	34,100	35,500	37,000	40,000	45,000	45,000
Turkey	17,750	17,500	18,000	17,400	17,900	17,900
Ukraine	11,500	11,500	12,200	10,300	9,900	9,900
Uzbekistan	8,400	8,900	9,350	9,700	9,900	9,900
Others	150,804	154,178	160,547	167,418	169,469	169,484
Subtotal	663,811	673,413	679,217	707,073	712,103	713,543
United States	34,260	31,328	31,942	31,753	30,400	29,584
World Total	698,071	704,741	711,159	738,826	742,503	743,127
Ending Stocks						
Canada	10,398	7,101	5,178	6,835	6,135	6,135
China	65,274	76,105	97,042	111,049	126,819	126,819
European Union	9,938	12,697	15,557	10,772	14,122	12,972
India	17,830	17,220	14,540	9,800	11,310	12,000
Iran	7,701	8,716	9,716	8,716	3,166	5,546
Morocco	4,317	4,281	6,856	4,544	5,194	5,286
Russia	5,177	6,287	5,607	10,830	13,822	12,722
Others	58,563	65,809	61,691	59,918	60,176	60,777
Subtotal	179,198	198,216	216,187	222,464	240,744	242,257
United States	16,065	20,477	26,552	32,131	28,146	28,962
World Total	195,263	218,693	242,739	254,595	268,890	271,219

Regional Wheat Imports, Production, Consumption, and Stocks

Thousand Metric Tons

	2013/14	2014/15	2015/16	2016/17	Mar 2017/18	Apr 2017/18
TY Imports						
North America	9,839	9,004	8,373	9,173	9,900	9,900
Central America	1,833	1,834	1,834	1,993	2,025	2,025
South America	14,678	13,217	13,437	16,276	16,470	15,510
European Union - 28	3,976	5,979	6,916	5,286	5,500	5,500
Other Europe	1,858	1,760	1,828	1,970	1,860	1,860
Former Soviet Union - 12	7,528	7,678	7,402	7,358	8,075	7,935
Middle East	28,447	26,928	24,499	22,774	24,570	24,820
North Africa	25,246	25,430	27,873	28,334	27,850	27,350
Sub-Saharan Africa	20,405	20,963	22,865	22,223	25,520	26,060
East Asia	19,465	14,114	16,226	17,355	16,720	16,920
South Asia	6,722	8,164	8,823	15,469	11,671	11,671
Southeast Asia	17,176	20,576	25,483	27,761	28,150	28,350
Others	3,050	3,225	3,147	3,258	3,470	3,495
Total	160,223	158,872	168,706	179,230	181,781	181,396
Production						
North America	98,992	88,237	87,422	98,427	80,871	80,871
South America	19,803	24,581	21,601	28,819	25,052	25,297
European Union - 28	144,583	156,912	160,480	145,248	151,600	151,600
Other Europe	4,228	4,088	4,359	4,749	4,235	4,235
Former Soviet Union - 12	103,824	112,382	117,964	130,468	142,748	142,768
Middle East	41,708	35,414	42,905	39,791	42,615	42,525
North Africa	19,661	17,029	19,976	14,081	18,150	18,992
Sub-Saharan Africa	7,204	7,477	6,433	7,227	7,194	7,194
East Asia	123,248	127,650	131,515	130,148	131,224	131,199
South Asia	125,917	130,057	119,662	120,721	133,020	133,025
Oceania	25,751	24,157	22,689	30,822	21,909	21,909
Others	188	187	199	181	171	136
Total	715,107	728,171	735,205	750,682	758,789	759,751
Domestic Consumption						
North America	50,305	47,274	46,861	50,070	46,800	45,984
South America	27,421	27,115	27,795	28,665	28,840	28,325
European Union - 28	117,300	124,677	129,850	128,000	128,750	130,900
Other Europe	4,857	4,875	4,935	5,035	5,035	5,035
Former Soviet Union - 12	72,755	74,990	77,775	79,070	84,090	84,125
Middle East	58,564	57,957	59,610	59,836	62,290	61,385
North Africa	42,475	42,726	43,666	44,570	45,075	45,075
Sub-Saharan Africa	26,383	27,220	28,611	29,204	31,323	31,818
East Asia	130,201	129,523	125,274	132,255	130,515	130,495
South Asia	132,041	132,306	128,914	139,104	141,221	140,531
Southeast Asia	16,610	19,295	23,131	26,375	26,105	27,055
Oceania	8,280	8,564	8,505	8,740	8,220	8,220
Others	3,480	3,574	3,582	3,834	3,955	3,980
Total	690,672	700,096	708,509	734,758	742,219	742,928
Ending Stocks						
North America	26,988	28,290	32,390	39,842	34,957	35,773
South America	6,622	8,545	4,079	4,788	3,820	4,046
European Union - 28	9,938	12,697	15,557	10,772	14,122	12,972
Other Europe	1,009	1,321	1,598	1,959	1,739	2,039
Former Soviet Union - 12	15,832	20,662	16,770	21,105	24,483	22,853
Middle East	19,234	19,274	21,168	17,857	13,417	16,512
North Africa	14,045	13,216	16,628	13,924	14,114	14,406
Sub-Saharan Africa	2,844	3,036	3,173	2,517	3,038	3,308
East Asia	68,314	79,217	100,404	114,270	130,069	130,264
South Asia	21,661	23,109	21,026	16,656	18,316	19,011
Southeast Asia	3,491	3,921	5,413	5,857	6,902	6,117
Oceania	4,861	4,960	4,115	4,610	3,489	3,489
Others	424	445	418	438	424	429
Total	195,263	218,693	242,739	254,595	268,890	271,219

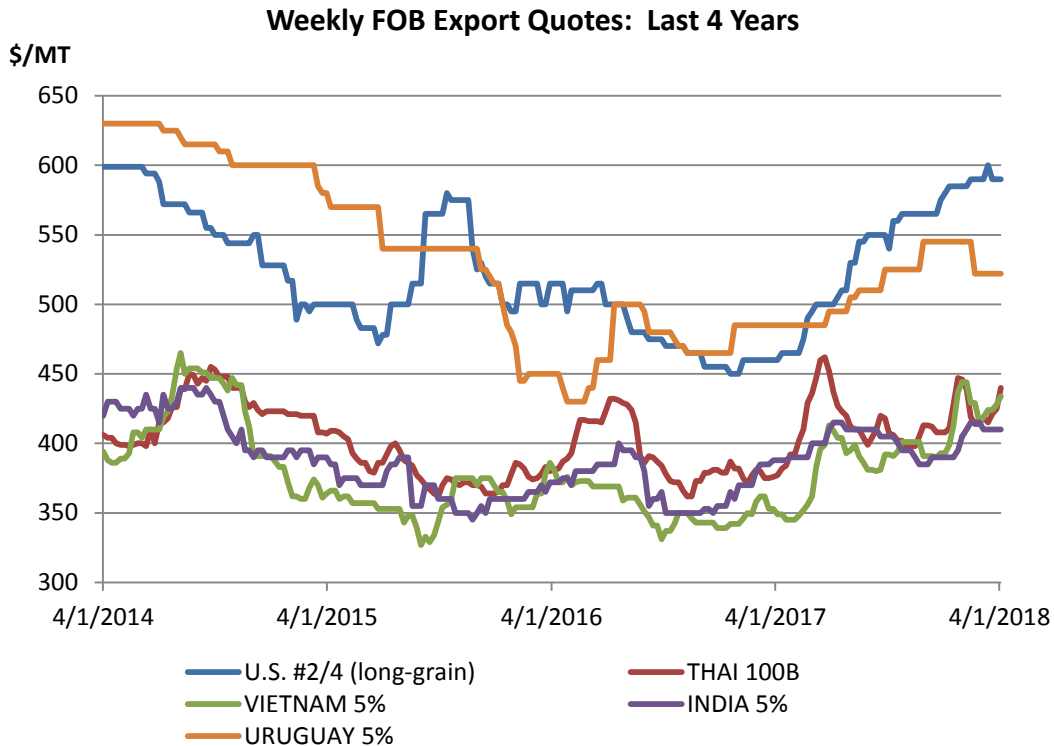
NOTES: Regional definitions appear on last page of this circular. Imports are reported on a trade year basis. All other data are reported using local marketing years.

RICE: WORLD MARKETS AND TRADE

OVERVIEW

Global rice production is at a record this month, with higher production in Brazil, Burma, Colombia, Pakistan, Philippines, and Sri Lanka. Trade is also at a record, with higher imports for Bangladesh, Ghana, Indonesia, and the Philippines. Exports are raised for Brazil, Burma, India, Pakistan, and Thailand. Global stocks are up this month to the second-highest on record.

PRICES

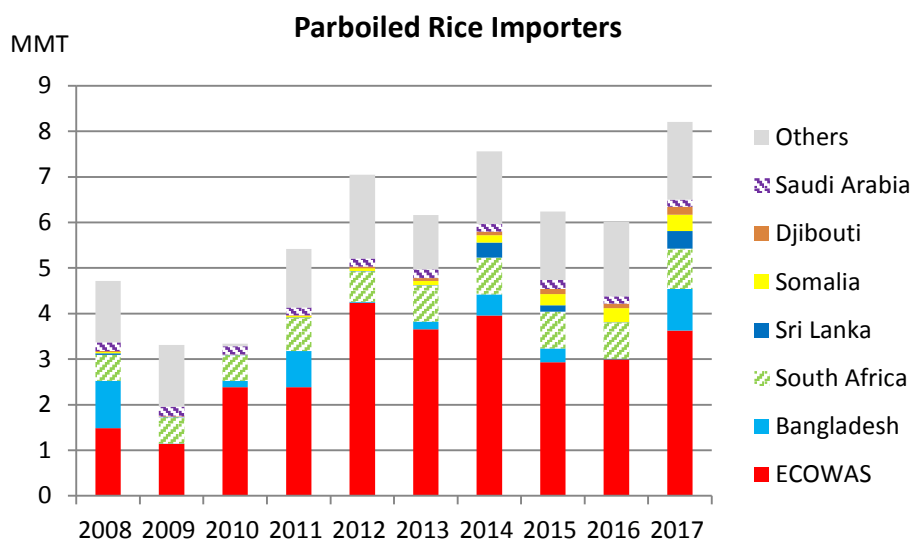


U.S. FOB export quotes for long-grain bagged milled rice peaked this month to the highest level in 4 years, before subsiding to \$590/ton. The steady increase over the past year has been reflective of the smaller crop harvested in 2017. The *USDA Prospective Plantings* report forecast higher intentions for planted area in the coming year, though lower than many analysts' predictions. South American quotes slid lower with the onset of harvest. Uruguayan quotes are currently at \$522/ton. Thai and Vietnamese quotes rose over the past month to \$440/ton and \$434/ton, respectively, on strong demand from Indonesia and the Philippines. Indian quotes remained lower at \$410/ton.

FEATURES

Parboiled Rice Trade Hits Record on African and South Asian Demand

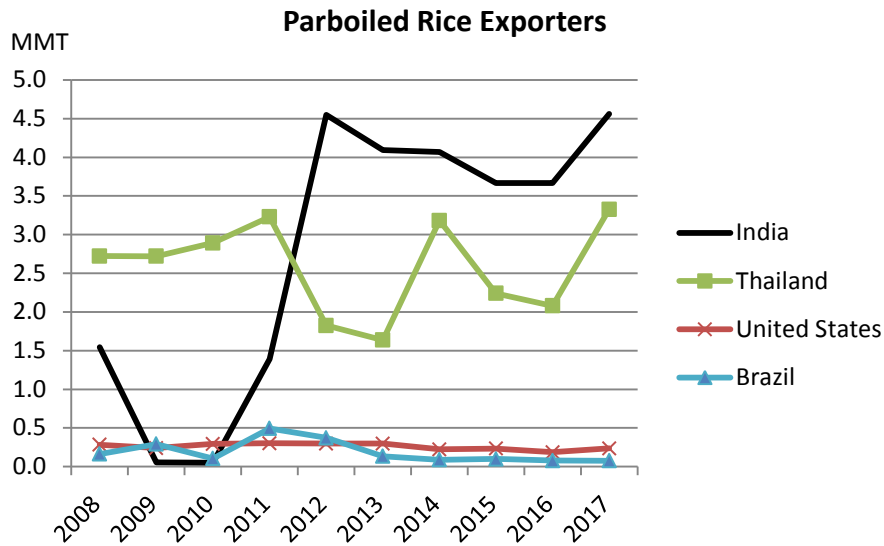
Parboiled rice is processed by steaming rice in the husk, thus retaining nutrients and resulting in more separated grains when cooked. Recently, it has grown in prominence and now accounts for nearly 20 percent of global trade. Global parboiled trade surged past 8 million metric tons to a new record in 2017, up by a third from the prior year. Some buyers, such as South Africa at nearly 1 million tons, have maintained their relatively steady imports. But new and renewed importers, particularly from West Africa, South Asia, and East Africa, led trade to soar to new levels.



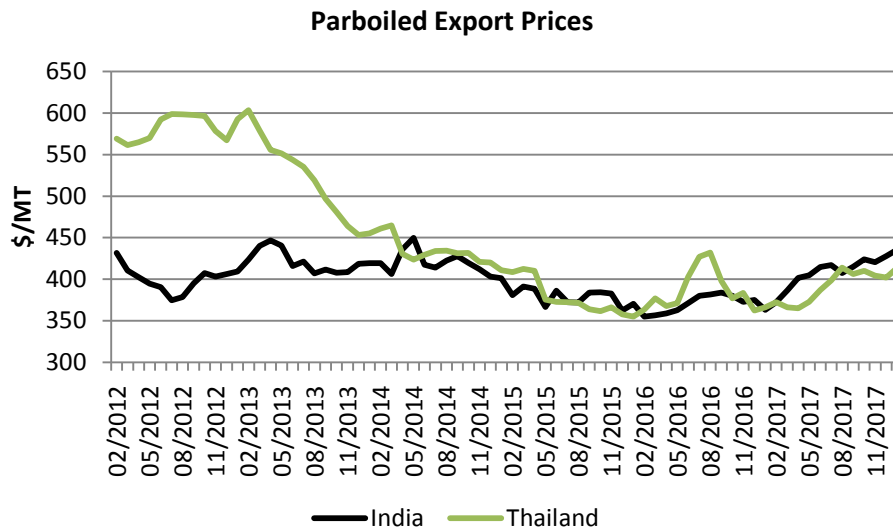
The largest proportion of parboiled rice is destined to West Africa. Nigeria is the largest parboiled rice market in Africa, yet a weakened economy, and certain import and currency restrictions curtailed imports directly into the country beginning in 2015 (see [Grain World Markets and Trade July 2016 page 11](#)). Nigeria is a member of the regional Economic Community of West African States (ECOWAS), which has a common import regime. Although most other ECOWAS member states prefer regular white rice over parboiled rice, imports of the latter have surged, particularly to Benin. Indirect trade through this regional economic community and into Nigeria stepped up considerably over the past year.

South Asian buyers Bangladesh and Sri Lanka suddenly re-entered the market in 2017, having barely imported any parboiled rice in the prior year. Both had poor local harvests, so the governments tendered for emergency purchases and facilitated greater trade by the private sector. Imports in 2018 will be largely dependent upon the ability of both countries to increase harvested area and attain improved yields.

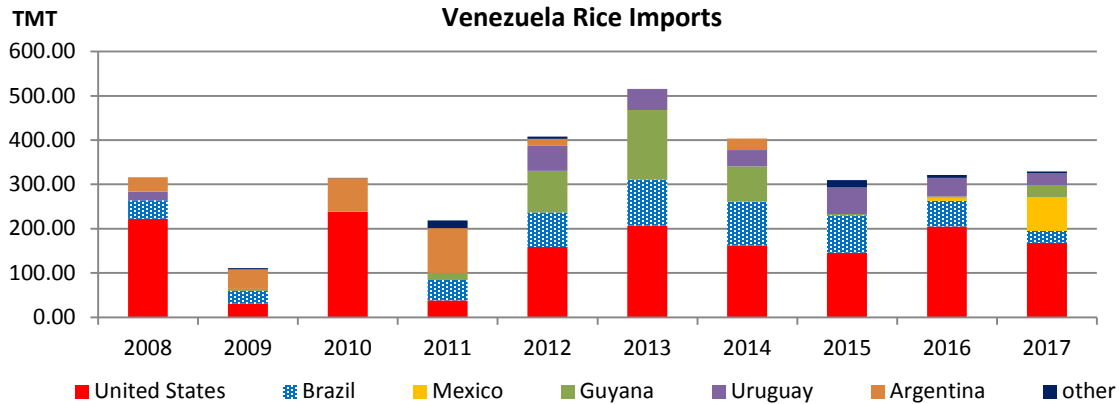
Finally, East African countries Somalia and Djibouti are relatively new importers but, combined, saw imports rise by 30 percent compared to 2016. With growing populations and essentially no domestic production, imports for this region are set to rise in 2018.



India and Thailand are the primary suppliers of parboiled rice, followed distantly by the United States and Brazil. India has dominated the market since 2012, the first full year in which its non-basmati export ban was removed. Since mid-2014, the two main competitors' prices have been in tight competition. Over half of Indian parboiled exports in 2017 were to West Africa, and it also dominated trade to Sri Lanka and East Africa. Thailand increased its global market share somewhat in 2017, providing stiff competition with India in the Bangladesh market and accounting for the bulk of the South African imports. U.S. exports are primarily destined for Saudi Arabia and North America. Brazil, largely focused on Western Hemisphere markets, was the only major supplier to see a slight decline in parboiled exports during 2017.

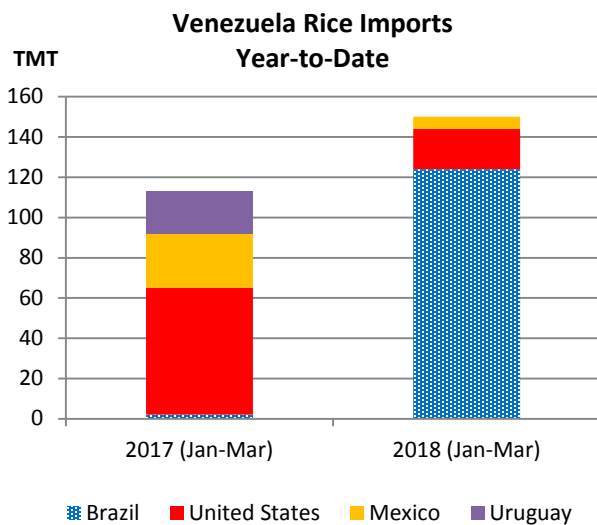


Venezuela Continues Importing Rice Amid Financial Crisis



Despite the fact that Venezuela is experiencing one of the worst financial crises in its history, the Government of Venezuela continues purchasing rice. Rice production in Venezuela has been declining for the last few years, compelling the government to import more of this staple food. In fact, Venezuela has already imported more in the first quarter of 2018 than it did during the same time period in 2017 – the only difference being the suppliers.

The United States has enjoyed a large share in the Venezuela rice market over the last 10 years, averaging over 50 percent. U.S. rice competes against several other Western Hemisphere exporters in the Venezuelan market. Argentina and Guyana have been big suppliers in previous years but have recently seen their market shares diminish. Mexico suddenly became the second-largest supplier to Venezuela in 2017.



Surprisingly, its exports were milled rice, whereas the Venezuelan government typically imports more affordable paddy rice to mill domestically.

Thus far in 2018, Brazil has seized the largest market share. It exported 124,000 tons to Venezuela in the first quarter of 2018, which is roughly five times more than in all of 2017, while the United States exported only 20,000 tons, which is about one-third of the amount shipped during the same period last year. Price is a large determinant as Brazil's rice prices averaged around \$305/ton FOB, while U.S. prices averaged roughly \$342/ton FOB.

TRADE CHANGES IN 2018 (1,000 MT)

Country	Attribute	Previous	Current	Change	Reason
Angola	Imports	650	525	-125	Sluggish shipments to date
Bangladesh	Imports	1,600	1,800	200	Continued strong private sector buying throughout the first quarter
Ghana	Imports	600	700	100	Rising demand for Asian fragrant rice
Indonesia	Imports	800	1,300	500	Significant government purchases through BULOG
Philippines	Imports	1,300	1,400	100	Recent purchases by the government (NFA)
Saudi Arabia	Imports	1,450	1,300	-150	Reduced demand as expatriate population declines as a result of expat levy
Brazil	Exports	650	750	100	Strong start in first quarter
Burma	Exports	3,300	3,500	200	Steady sales in region, especially to neighboring countries
India	Exports	13,000	13,200	200	Sizable shipments to Bangladesh
Pakistan	Exports	3,800	4,000	200	Continued competitive prices
Thailand	Exports	10,200	10,500	300	Strong start in first quarter

TRADE CHANGES IN 2017 (1,000 MT)

Country	Attribute	Previous	Current	Change	Reason
Bangladesh	Imports	2,200	2,324	124	Final trade data
Philippines	Imports	1,100	1,200	100	Final trade data
Saudi Arabia	Imports	1,400	1,300	-100	Near-final trade data
India	Exports	12,360	12,560	260	Final trade data

World Rice Trade
January/December Year, Thousand Metric Tons

	2013/14	2014/15	2015/16	2016/17	2017/18 Mar	2017/18 Apr
TY Exports						
Argentina	494	310	527	392	400	400
Australia	404	323	165	187	325	325
Brazil	852	895	641	594	650	750
Burma	1,688	1,735	1,300	3,350	3,300	3,500
Cambodia	1,000	1,150	1,150	1,150	1,250	1,250
China	393	262	368	1,173	1,600	1,600
European Union	284	251	270	369	280	280
Guyana	446	486	431	440	460	460
India	11,588	11,046	10,040	12,560	13,000	13,200
Pakistan	3,700	4,000	4,100	3,600	3,800	4,000
Paraguay	380	371	557	500	520	520
Russia	187	163	198	175	160	160
Thailand	10,969	9,779	9,867	11,615	10,200	10,500
Uruguay	957	718	996	1,000	810	810
Vietnam	6,325	6,606	5,088	6,488	6,700	6,700
Others	1,509	1,173	1,134	1,006	1,104	1,031
Subtotal	41,176	39,268	36,832	44,599	44,559	45,486
United States	2,947	3,381	3,373	3,384	3,300	3,150
World Total	44,123	42,649	40,205	47,983	47,859	48,636
TY Imports						
Bangladesh	1,335	598	35	2,324	1,600	1,800
Benin	350	400	450	525	500	550
Brazil	586	363	786	741	600	600
Cameroon	525	500	500	550	575	575
China	4,450	5,150	4,600	5,500	5,500	5,500
Cote d'Ivoire	950	1,150	1,300	1,350	1,500	1,500
Cuba	377	575	544	500	540	540
European Union	1,556	1,786	1,816	1,875	1,900	1,900
Ghana	590	580	700	650	600	700
Guinea	520	420	650	725	800	800
Indonesia	1,225	1,350	1,000	300	800	1,300
Iran	1,400	1,300	1,100	1,600	1,300	1,300
Iraq	1,080	1,000	930	1,070	1,100	1,100
Japan	669	688	685	679	685	685
Kenya	440	450	500	675	700	700
Malaysia	989	1,051	823	1,000	900	900
Mexico	685	719	731	870	850	860
Mozambique	590	575	625	750	700	700
Nepal	520	530	530	550	600	600
Nigeria	3,200	2,100	2,100	2,500	2,600	2,600
Philippines	1,800	2,000	800	1,200	1,300	1,400
Saudi Arabia	1,459	1,601	1,300	1,300	1,450	1,300
Senegal	960	990	980	1,000	1,100	1,100
South Africa	910	912	954	1,054	950	1,000
United Arab Emirates	560	580	670	750	825	825
Others	12,668	12,067	11,771	13,812	13,920	13,905
Subtotal	40,394	39,435	36,880	43,850	43,895	44,740
Unaccounted	2,974	2,457	2,557	3,346	3,189	3,121
United States	755	757	768	787	775	775
World Total	44,123	42,649	40,205	47,983	47,859	48,636

TY=Trade Year, see Endnotes. Note about dates: 2017/18 is calendar year 2018, 2016/17 is calendar year 2017, and so on.

World Rice Production, Consumption, and Stocks
Local Marketing Years, Thousand Metric Tons

	2013/14	2014/15	2015/16	2016/17	2017/18 Mar	2017/18 Apr
Milled Production						
Bangladesh	34,390	34,500	34,500	34,578	32,650	32,650
Brazil	8,300	8,465	7,210	8,383	7,820	8,075
Burma	11,957	12,600	12,160	12,650	12,950	13,200
Cambodia	4,725	4,700	4,847	4,950	5,000	5,000
China	142,530	144,560	145,770	144,953	145,989	145,989
Egypt	4,750	4,530	4,000	4,800	4,300	4,300
India	106,646	105,482	104,408	109,700	110,000	110,000
Indonesia	36,300	35,560	36,200	36,858	37,000	37,000
Japan	7,931	7,849	7,670	7,780	7,600	7,590
Korea, South	4,230	4,241	4,327	4,197	3,972	3,972
Nigeria	3,038	3,465	3,528	3,654	3,654	3,654
Pakistan	6,798	7,003	6,800	6,850	7,200	7,500
Philippines	11,858	11,915	11,000	11,686	11,970	12,300
Thailand	20,460	18,750	15,800	19,200	20,400	20,370
Vietnam	28,161	28,166	27,584	27,400	28,450	28,450
Others	40,514	40,601	41,006	41,395	41,648	41,753
Subtotal	472,588	472,387	466,810	479,034	480,603	481,803
United States	6,117	7,106	6,133	7,117	5,659	5,659
World Total	478,705	479,493	472,943	486,151	486,262	487,462
Consumption and Residual						
Bangladesh	34,900	35,100	35,100	35,000	35,000	35,200
Brazil	7,900	7,925	7,900	8,000	8,025	8,100
Burma	10,450	10,500	10,400	10,000	10,000	9,900
Cambodia	3,650	3,615	3,700	3,750	3,750	3,750
China	139,770	140,334	140,799	141,448	142,700	142,700
Egypt	4,000	4,000	3,900	4,300	4,400	4,400
India	98,727	98,244	93,568	95,778	97,550	97,350
Indonesia	38,500	38,300	37,800	37,500	37,400	37,400
Japan	8,380	8,600	8,600	8,500	8,450	8,450
Korea, South	4,422	4,197	4,212	4,706	4,870	4,870
Nepal	3,831	3,770	3,353	3,754	3,850	3,850
Nigeria	5,800	5,900	6,000	6,200	6,400	6,400
Philippines	12,850	13,000	12,900	12,900	12,900	13,000
Thailand	10,600	10,000	9,100	12,000	11,500	11,170
Vietnam	22,000	22,000	22,500	22,000	22,100	22,100
Others	61,411	61,921	62,667	65,541	67,052	67,102
Subtotal	471,505	469,372	464,514	477,608	476,674	476,334
United States	3,978	4,284	3,580	4,171	3,811	3,811
World Total	475,483	473,656	468,094	481,779	480,485	480,145
Ending Stocks						
Bangladesh	966	1,592	1,205	849	1,795	1,895
China	60,500	69,000	78,500	86,500	93,989	93,989
India	22,800	17,800	18,400	20,550	20,000	20,000
Indonesia	5,501	4,111	3,509	3,165	3,563	4,063
Japan	3,007	2,821	2,552	2,491	2,237	2,266
Philippines	1,695	2,410	2,110	1,996	2,366	2,696
Thailand	11,999	11,270	8,403	4,238	3,188	3,188
Others	14,556	17,330	16,581	15,856	14,998	15,271
Subtotal	121,024	126,334	131,260	135,645	142,136	143,368
United States	1,025	1,552	1,475	1,462	926	1,056
World Total	122,049	127,886	132,735	137,107	143,062	144,424

Note: All data are reported on a milled basis.

Regional Rice Imports, Production, Consumption, and Stocks

Thousand Metric Tons

	2013/14	2014/15	2015/16	2016/17	Mar 2017/18	Apr 2017/18
TY Imports						
North America	1,801	1,838	1,855	2,018	1,995	2,005
Caribbean	900	1,158	1,120	1,202	1,220	1,220
South America	1,814	1,686	2,015	1,865	1,644	1,674
Other Europe	132	128	138	124	140	130
Former Soviet Union - 12	628	572	452	593	605	580
Middle East	6,711	6,464	5,723	6,605	6,635	6,505
North Africa	470	396	483	475	485	485
Sub-Saharan Africa	12,658	11,363	12,169	14,074	14,730	14,895
East Asia	6,044	6,686	6,097	7,141	7,146	7,146
South Asia	2,576	1,693	945	4,054	3,150	3,350
Southeast Asia	5,023	5,677	3,883	3,744	4,155	4,755
European Union	1,556	1,786	1,816	1,875	1,900	1,900
Total	41,149	40,192	37,648	44,637	44,670	45,515
Production						
North America	6,248	7,285	6,289	7,292	5,847	5,847
Caribbean	1,054	979	865	981	1,021	1,021
South America	16,519	16,783	15,766	16,698	16,425	16,554
European Union - 28	1,937	1,954	2,050	2,068	2,090	2,090
Former Soviet Union - 12	1,205	1,185	1,262	1,261	1,227	1,227
Middle East	2,417	2,245	2,392	2,455	2,475	2,475
North Africa	4,776	4,553	4,044	4,837	4,340	4,340
Sub-Saharan Africa	14,387	15,193	15,701	16,397	16,025	16,025
East Asia	157,701	159,486	160,179	159,674	160,255	160,245
South Asia	154,255	153,259	152,263	156,695	155,705	156,236
Southeast Asia	116,867	115,367	111,317	116,515	119,591	120,141
Total	478,705	479,493	472,943	486,151	486,262	487,462
Domestic Consumption						
North America	5,217	5,522	4,814	5,448	5,101	5,101
Central America	1,195	1,199	1,301	1,318	1,334	1,334
Caribbean	1,981	2,035	1,988	2,068	2,173	2,173
South America	14,818	14,980	15,067	15,007	15,223	15,198
European Union - 28	3,250	3,400	3,550	3,650	3,750	3,750
Former Soviet Union - 12	1,607	1,508	1,503	1,621	1,620	1,605
Middle East	9,140	9,000	8,549	8,888	9,205	9,070
North Africa	4,452	4,407	4,279	4,744	4,875	4,875
Sub-Saharan Africa	26,514	27,141	27,701	29,672	30,406	30,496
East Asia	156,184	156,400	156,433	157,818	159,135	159,145
South Asia	143,331	143,183	138,819	141,398	143,475	143,675
Southeast Asia	102,763	102,357	101,520	103,345	102,876	102,546
Total	471,169	471,690	466,079	475,548	479,758	479,553
Ending Stocks						
North America	1,184	1,717	1,602	1,631	1,123	1,263
Central America	201	219	267	266	262	262
Caribbean	264	223	231	286	346	342
South America	1,852	2,211	1,693	1,757	1,939	1,845
European Union - 28	1,163	1,151	1,183	1,115	1,075	1,075
Middle East	1,777	1,742	1,154	1,249	1,134	1,104
North Africa	610	924	924	1,426	1,324	1,326
Sub-Saharan Africa	3,001	3,215	2,737	2,742	2,693	2,756
East Asia	64,694	73,483	83,126	91,073	97,817	97,906
South Asia	24,920	21,531	21,574	23,075	23,546	23,777
Southeast Asia	21,976	21,060	18,008	12,122	11,415	12,395
Oceania	241	223	77	208	239	229
Total	122,049	127,886	132,735	137,107	143,062	144,424

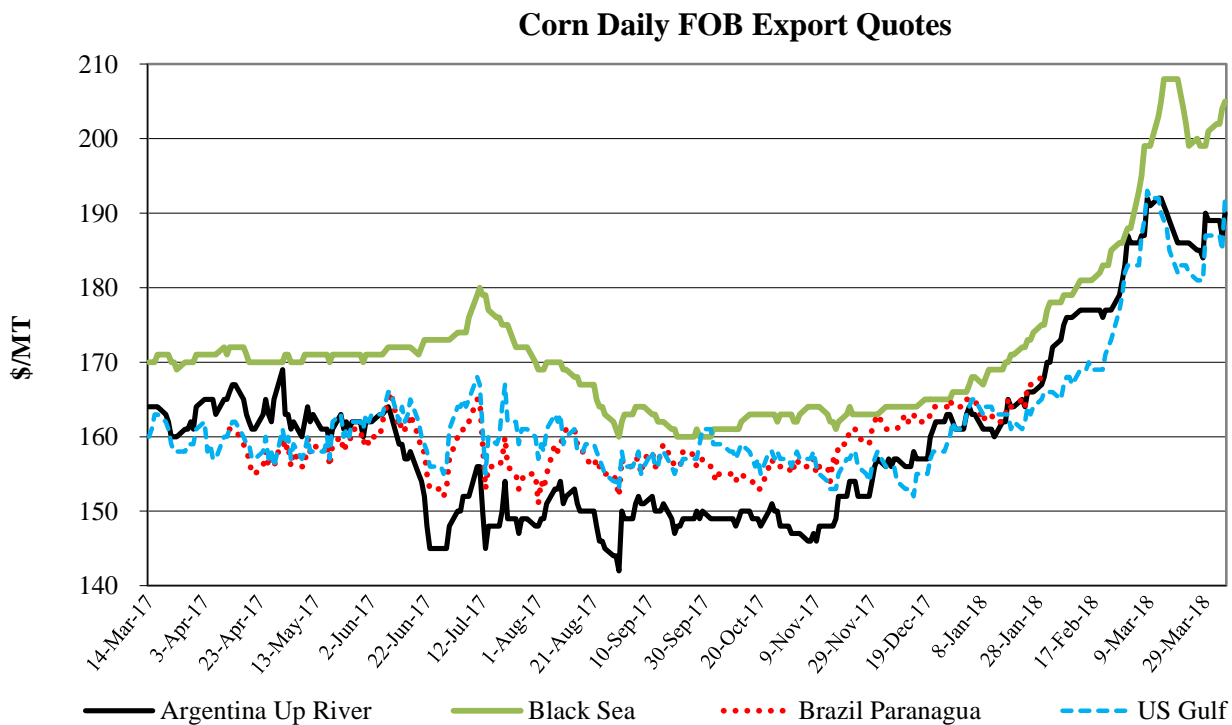
NOTES: Regional definitions appear on last page of this circular. Imports are reported on a trade year basis. All other data are reported using local marketing years.

COARSE GRAINS: WORLD MARKETS AND TRADE

OVERVIEW

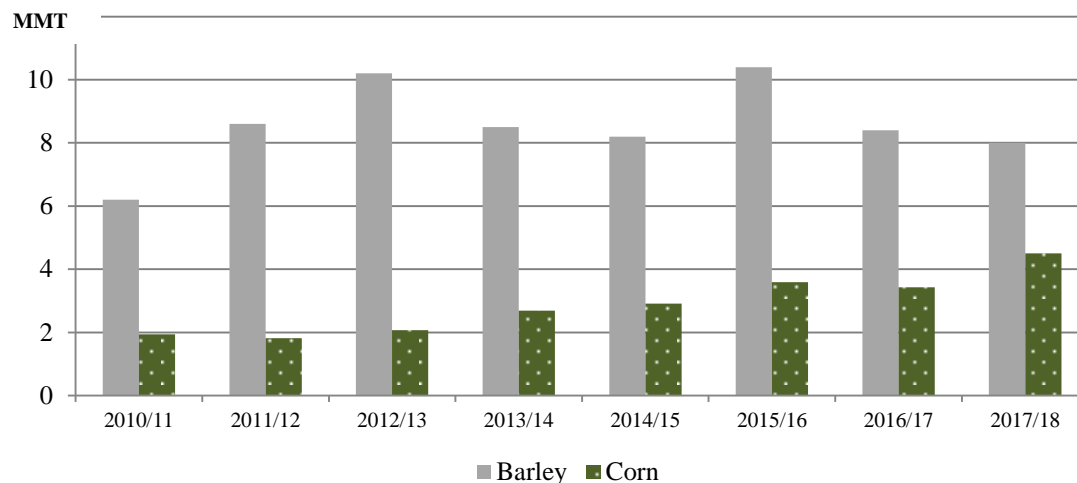
Global corn production for 2017/18 is lower this month primarily driven by reductions for Argentina, Brazil, and Paraguay. Global corn trade is down with lower imports for Iran, Malaysia, Taiwan, Chile, and Mexico. U.S. corn exports are unchanged. The U.S. season-average farm price is unchanged at \$3.35 per bushel.

PRICES



Global corn prices have moved up since the previous WASDE. Argentine bids rose \$4/ton to \$190 on worsening crop conditions. Brazil bids are seasonally unavailable. Black Sea bids jumped \$12/ton to \$205 on expectations for stronger demand, particularly from China. U.S. quotes rose \$9/ton to \$192 reflecting stronger foreign demand and record high outstanding sales this point in the marketing year. Higher barge rates due to swollen water levels also the upper Mississippi River also boosted export quotes.

Saudi Arabia: Demand for Commercial Feeds Drives Record Corn Imports



Saudi Arabia's corn imports are set to double from 5 years ago as the government revamps efforts to modernize the country's feed industry. The world's largest barley importer makes up about a third of global barley trade but is seeking more efficient feedstuffs. High barley prices, dwindling water supplies, and efforts to expand the poultry and processed corn industries are driving corn imports to a record. Compound feed production is set to grow as the government offers import subsidies for corn and other feed ingredients to reduce its historic dependence on barley.

Farmers have traditionally favored mixing barley with alfalfa to raise traditional livestock (i.e., sheep, camels, goats). Both feedstuffs are prominent among rural farmers as the government subsidizes barley imports and has traditionally supported domestic alfalfa farmers. However, efforts to modernize the industry are changing the existing feed market. Saudi Arabia is set to phase out production of alfalfa by 2019, primarily due to constrained groundwater supplies. Financial pressures have mounted as global barley prices are at their highest in nearly 3 years (see report [here](#)),¹ making it more expensive for the government to procure. Because barley is offered at fixed prices to domestic farmers, higher prices are borne by the government.

Compound feeds (composed primarily of corn) developed for traditional livestock are increasingly marketed to rural populations as consumption is expected to grow (see page 8 of report [here](#)).² With one of the largest poultry industries in the Middle East and expanding capacity for food processing (e.g. high fructose corn syrup, starch, etc.), overall corn consumption in Saudi Arabia is also expected to grow. Government incentives to conserve water and diversify grain imports are shifting the country's feed industry away from traditional supplies and driving 2017/18 corn imports and consumption to new records.

¹ Report is March 2018 *Grain: World Markets and Trade*

² Report is *2018 Grain and Feed Annual Saudi Arabia*

TRADE CHANGES IN 2017/18 (1,000 MT)

Country	Commodity	Attribute	Previous	Current	Change	Reason
Argentina	Corn	Exports	25,000	24,000	-1,000	Smaller exportable supplies
Chile	Corn	Imports	2,000	1,700	-300	Reflects tighter supplies in Argentina, the top supplier
Iran	Corn	Imports	9,000	8,500	-500	Reflects tighter supplies from Argentina
Malaysia	Corn	Imports	4,000	3,500	-500	Slower-than-expected demand due to slower poultry growth and tighter supplies in Argentina.
Mexico	Corn	Imports	16,500	16,200	-300	Slower-than-anticipated purchases from the United States reflected in the Export Sales Report
Paraguay	Corn	Exports	2,500	2,100	-400	Reflects a smaller crop
Taiwan	Corn	Imports	4,500	4,000	-500	Reflects tighter supplies from Argentina
Turkey	Corn	Imports	1,500	2,000	500	Stronger demand and poultry feed use
Argentina	Barley	Exports	2,100	2,500	400	Strong global demand
China	Barley	Imports	7,000	7,200	200	Continued large purchases for feed use
Iran	Barley	Imports	2,100	2,900	800	Stronger demand at the start of the trade year, particularly from Kazakhstan
Russia	Barley	Exports	5,200	5,400	200	Strong Middle East demand

World Coarse Grain Trade
October/September Year, Thousand Metric Tons

	2013/14	2014/15	2015/16	2016/17	2017/18 Mar	2017/18 Apr
TY Exports						
Argentina	16,630	21,003	25,290	26,105	27,705	27,055
Australia	7,004	7,286	6,389	10,265	6,725	6,725
Brazil	22,059	21,954	35,415	19,797	31,015	31,015
Canada	5,482	3,604	4,693	4,997	4,550	4,550
European Union	7,841	15,068	10,975	8,174	8,505	8,505
Mexico	501	792	1,559	1,539	1,300	1,300
Paraguay	2,718	3,031	2,663	1,767	2,515	2,115
Russia	7,074	9,155	8,465	9,261	10,060	10,260
South Africa	2,128	762	764	2,135	1,910	1,910
Ukraine	24,125	24,208	21,457	26,868	25,110	25,110
Others	13,004	10,589	7,952	8,814	7,365	7,515
Subtotal	108,566	117,452	125,622	119,722	126,760	126,060
United States	56,776	56,419	59,230	61,798	62,465	62,465
World Total	165,342	173,871	184,852	181,520	189,225	188,525
TY Imports						
Algeria	4,946	4,863	5,224	4,473	5,425	5,425
Brazil	1,184	1,023	2,123	3,177	1,450	1,350
Chile	1,621	1,707	1,744	1,538	2,180	1,830
China	12,445	25,699	17,499	16,055	17,100	17,300
Colombia	4,795	4,747	4,824	5,034	5,335	5,335
Dominican Republic	1,011	1,202	1,351	1,294	1,400	1,400
Egypt	8,840	7,938	8,795	8,792	10,100	10,100
European Union	16,355	9,408	14,287	15,901	16,905	16,905
Iran	6,600	8,000	8,300	10,000	11,100	11,400
Israel	2,072	1,601	1,505	1,925	1,785	1,785
Japan	17,501	16,726	17,070	16,999	16,720	16,720
Jordan	1,443	1,448	1,713	1,588	1,700	1,700
Kenya	444	717	309	1,106	1,300	1,300
Korea, South	10,499	10,245	10,192	9,296	9,770	9,790
Libya	1,493	1,685	1,905	1,764	2,100	2,100
Malaysia	3,485	3,221	4,080	3,528	4,000	3,500
Mexico	11,312	11,640	14,881	15,238	16,900	16,530
Morocco	2,858	2,217	3,182	2,526	3,000	3,000
Peru	2,336	2,863	3,083	3,338	3,420	3,420
Saudi Arabia	11,332	11,115	13,992	11,830	12,510	12,510
Taiwan	4,346	3,938	4,781	4,267	4,600	4,100
Tunisia	1,449	1,525	1,713	1,745	1,900	1,900
Turkey	1,977	2,719	713	1,717	2,005	2,605
Venezuela	2,627	2,433	1,738	1,240	1,600	1,600
Vietnam	4,300	6,700	8,600	8,500	9,500	9,500
Others	18,809	20,607	22,517	21,489	18,746	18,761
Subtotal	156,080	165,987	176,121	174,360	182,551	181,866
Unaccounted	5,939	4,588	4,750	3,738	3,274	3,379
United States	3,323	3,296	3,981	3,422	3,400	3,280
World Total	165,342	173,871	184,852	181,520	189,225	188,525

TY=Trade Year, see Endnotes.

World Coarse Grains Production, Consumption, and Stocks
Local Marketing Years, Thousand Metric Tons

	2013/14	2014/15	2015/16	2016/17	2017/18 Mar	2017/18 Apr
Production						
Argentina	35,665	36,782	38,439	48,569	43,454	39,791
Australia	12,158	12,605	12,544	16,627	10,896	10,896
Brazil	82,634	87,671	68,649	101,575	97,286	94,786
Canada	28,745	21,992	25,619	25,794	26,205	26,205
China	225,062	222,405	231,487	226,867	223,391	223,391
Ethiopia	13,078	14,442	13,035	12,700	13,035	13,035
European Union	159,212	170,670	152,665	152,591	151,644	151,644
India	43,216	43,076	38,701	43,470	45,200	45,200
Indonesia	9,100	9,000	10,500	10,900	11,350	11,400
Mexico	32,065	32,689	32,378	33,263	32,075	32,375
Nigeria	14,633	18,917	16,681	19,335	18,850	18,850
Russia	35,735	40,386	37,427	40,765	41,712	41,712
South Africa	15,518	11,110	8,675	18,116	13,463	13,650
Turkey	13,074	9,393	14,243	10,893	13,043	13,043
Ukraine	40,022	39,389	33,387	39,217	34,071	34,071
Others	156,360	164,700	157,755	161,631	162,032	160,708
Subtotal	916,277	935,227	892,185	962,313	937,707	930,757
United States	367,089	377,234	367,009	402,612	384,255	384,255
World Total	1,283,366	1,312,461	1,259,194	1,364,925	1,321,962	1,315,012
Domestic Consumption						
Argentina	13,695	14,232	14,321	16,044	16,384	14,724
Brazil	58,053	60,009	59,823	64,032	65,892	65,892
Canada	22,345	21,290	21,251	21,652	23,645	23,645
China	223,196	228,709	238,790	252,948	261,980	262,180
Egypt	14,122	14,832	15,803	16,027	16,778	16,777
European Union	164,401	162,592	157,250	160,690	161,000	161,000
India	37,600	40,450	40,170	42,600	44,650	44,600
Iran	11,320	12,020	13,820	14,620	17,620	17,620
Japan	17,570	16,874	17,257	17,246	17,062	17,061
Mexico	40,935	42,175	44,715	46,845	48,340	48,310
Nigeria	14,668	18,776	16,641	19,580	19,150	19,150
Russia	28,219	31,139	29,715	32,125	32,115	32,015
Saudi Arabia	11,411	11,905	14,105	13,725	13,605	13,605
Turkey	13,414	13,023	14,093	12,993	14,418	15,118
Vietnam	8,200	9,400	12,200	12,900	13,400	13,400
Others	244,209	251,769	249,980	255,541	255,396	254,251
Subtotal	931,254	965,593	942,265	1,025,300	1,029,672	1,024,947
United States	305,044	311,339	312,597	327,479	330,651	328,830
World Total	1,236,298	1,276,932	1,254,862	1,352,779	1,360,323	1,353,777
Ending Stocks						
Argentina	3,169	4,274	3,179	6,601	6,320	4,968
Brazil	14,265	8,235	7,010	14,492	11,815	11,321
Canada	4,648	3,334	4,643	4,914	4,184	4,184
China	82,544	101,917	112,086	101,949	80,380	80,380
European Union	15,565	18,885	15,452	15,111	14,155	14,155
Iran	5,094	7,134	7,174	7,114	6,854	6,854
Mexico	3,487	4,832	5,889	6,009	5,356	5,299
Others	48,551	51,606	47,952	45,285	40,683	39,787
Subtotal	177,323	200,217	203,385	201,475	169,747	166,948
United States	34,313	46,948	48,112	62,168	56,269	57,930
World Total	211,636	247,165	251,497	263,643	226,016	224,878

Regional Coarse Grains Imports, Production, Consumption, and Stocks

Thousand Metric Tons

	2013/14	2014/15	2015/16	2016/17	Mar 2017/18	Apr 2017/18
TY Imports						
North America	15,349	16,649	19,953	19,579	21,560	21,070
Central America	2,923	3,456	3,938	3,799	3,900	3,900
Caribbean	2,330	2,444	2,597	2,659	2,840	2,840
South America	13,180	13,355	13,878	14,937	14,830	14,390
European Union - 28	16,355	9,408	14,287	15,901	16,905	16,905
Former Soviet Union - 12	807	745	548	828	720	720
Middle East	26,241	27,608	29,730	30,716	32,025	33,025
North Africa	19,586	18,228	20,819	19,300	22,525	22,525
Sub-Saharan Africa	3,134	4,169	6,133	6,674	4,240	4,140
East Asia	44,865	56,655	49,576	46,709	48,240	47,960
Southeast Asia	12,814	14,694	15,755	13,943	15,215	14,720
Others	1,819	1,872	2,888	2,737	2,951	2,951
Total	159,403	169,283	180,102	177,782	185,951	185,146
Production						
North America	427,899	431,915	425,006	461,669	442,535	442,835
South America	133,041	139,745	122,016	162,950	154,657	147,927
European Union - 28	159,212	170,670	152,665	152,591	151,644	151,644
Other Europe	8,992	10,927	9,271	11,328	7,337	7,337
Former Soviet Union - 12	87,859	91,821	82,551	92,149	89,469	88,759
Middle East	22,274	17,931	23,165	19,700	21,681	21,681
North Africa	11,581	10,927	12,289	9,263	10,807	10,807
Sub-Saharan Africa	101,908	110,183	98,317	113,397	109,058	109,245
East Asia	227,452	225,083	234,030	229,507	225,963	225,952
South Asia	54,292	54,267	50,264	56,056	58,119	58,193
Southeast Asia	31,006	30,949	31,992	34,135	34,338	34,278
Oceania	12,804	13,283	13,236	17,244	11,376	11,376
Others	5,046	4,760	4,392	4,936	4,978	4,978
Total	1,283,366	1,312,461	1,259,194	1,364,925	1,321,962	1,315,012
Domestic Consumption						
North America	368,324	374,804	378,563	395,976	402,636	400,785
South America	95,335	98,612	98,502	102,859	107,125	105,240
European Union - 28	164,401	162,592	157,250	160,690	161,000	161,000
Other Europe	7,803	8,347	8,551	8,917	8,047	8,047
Former Soviet Union - 12	56,361	58,273	53,430	55,969	54,749	53,799
Middle East	45,989	45,620	51,726	51,235	54,789	55,589
North Africa	28,059	30,168	32,142	31,043	33,103	33,102
Sub-Saharan Africa	100,887	110,148	104,871	113,573	111,591	111,551
East Asia	257,340	262,458	272,956	286,352	295,900	295,769
South Asia	49,036	52,143	53,271	56,324	58,994	59,544
Southeast Asia	39,043	41,183	43,943	45,957	47,000	46,600
Oceania	5,764	5,846	6,429	6,829	5,466	5,466
Others	10,060	10,340	10,897	11,323	11,686	11,686
Total	1,228,402	1,260,534	1,272,531	1,327,047	1,352,086	1,348,178
Ending Stocks						
North America	42,448	55,114	58,644	73,091	65,809	67,413
South America	21,552	15,947	13,613	24,133	21,637	18,889
European Union - 28	15,565	18,885	15,452	15,111	14,155	14,155
Other Europe	818	1,102	963	1,627	1,017	1,017
Former Soviet Union - 12	7,399	7,916	6,246	6,610	5,260	5,300
Middle East	11,819	12,617	14,302	11,723	11,125	11,125
North Africa	5,703	5,412	5,875	3,695	3,834	3,834
Sub-Saharan Africa	9,321	12,192	9,011	10,349	8,637	9,103
East Asia	86,556	105,819	116,445	106,160	84,398	84,223
South Asia	4,025	5,224	3,195	4,057	4,458	4,332
Southeast Asia	4,324	4,149	4,997	3,856	3,388	3,189
Oceania	1,145	1,665	1,620	2,036	1,091	1,091
Others	961	1,123	1,134	1,195	1,207	1,207
Total	211,636	247,165	251,497	263,643	226,016	224,878

NOTES: Regional definitions appear on last page of this circular. Imports are reported on a trade year basis. All other data are reported using local marketing years.

World Corn Trade
October/September Year, Thousand Metric Tons

	2013/14	2014/15	2015/16	2016/17	2017/18 Mar	2017/18 Apr
TY Exports						
Argentina	12,846	18,448	21,678	22,951	25,000	24,000
Brazil	22,041	21,909	35,382	19,794	31,000	31,000
Burma	1,100	1,250	1,000	1,100	1,200	1,200
Canada	1,939	395	1,767	1,538	1,300	1,300
European Union	2,404	4,027	1,949	2,171	2,000	2,000
Mexico	501	784	1,559	1,539	1,300	1,300
Paraguay	2,714	3,012	2,662	1,757	2,500	2,100
Russia	4,194	3,213	4,691	5,589	4,800	4,800
South Africa	2,104	746	759	2,110	1,900	1,900
Ukraine	20,004	19,661	16,595	21,334	20,000	20,000
Others	10,292	8,114	5,713	6,220	4,615	4,655
Subtotal	80,139	81,559	93,755	86,103	95,615	94,255
United States	50,691	46,831	51,156	55,535	56,000	56,000
World Total	130,830	128,390	144,911	141,638	151,615	150,255
TY Imports						
Algeria	4,156	4,116	4,329	3,915	4,700	4,700
Bangladesh	488	482	1,042	1,176	1,100	1,200
Canada	678	1,536	949	827	1,200	1,200
Chile	1,456	1,516	1,539	1,484	2,000	1,700
China	3,277	5,516	3,174	2,464	4,000	4,000
Colombia	4,436	4,496	4,458	4,748	5,000	5,000
Cuba	928	886	853	964	1,000	1,000
Dominican Republic	1,011	1,202	1,351	1,294	1,400	1,400
Egypt	8,791	7,839	8,722	8,773	10,000	10,000
European Union	16,014	8,908	13,794	15,241	16,200	16,200
Iran	5,500	6,100	6,600	7,800	9,000	8,500
Israel	1,651	1,294	1,152	1,515	1,400	1,400
Japan	15,121	14,657	15,201	15,169	15,000	15,000
Kenya	350	600	200	976	1,200	1,200
Korea, South	10,406	10,168	10,121	9,231	9,700	9,700
Malaysia	3,485	3,221	4,080	3,528	4,000	3,500
Mexico	10,949	11,341	14,011	14,569	16,500	16,200
Morocco	2,349	1,941	2,224	2,164	2,500	2,500
Peru	2,232	2,741	2,985	3,169	3,300	3,300
Saudi Arabia	2,684	2,904	3,583	3,420	4,500	4,500
Taiwan	4,179	3,810	4,656	4,163	4,500	4,000
Tunisia	993	1,042	1,017	1,244	1,300	1,300
Turkey	1,381	2,377	567	1,421	1,500	2,000
Venezuela	2,626	2,433	1,738	1,238	1,600	1,600
Vietnam	4,300	6,700	8,600	8,500	9,500	9,500
Others	16,249	16,969	19,636	19,140	15,280	15,285
Subtotal	125,690	124,795	136,582	138,133	147,380	145,885
Unaccounted	4,413	2,786	6,547	2,055	2,935	3,070
United States	727	809	1,782	1,450	1,300	1,300
World Total	130,830	128,390	144,911	141,638	151,615	150,255

TY=Trade Year, see Endnotes.

World Corn Production, Consumption, and Stocks
Local Marketing Years, Thousand Metric Tons

	2013/14	2014/15	2015/16	2016/17	2017/18 Mar	2017/18 Apr
Production						
Argentina	26,000	29,750	29,500	41,000	36,000	33,000
Brazil	80,000	85,000	67,000	98,500	94,500	92,000
Canada	14,194	11,487	13,559	13,193	14,100	14,100
China	218,489	215,646	224,632	219,552	215,891	215,891
Ethiopia	6,492	7,235	6,800	6,350	6,500	6,500
European Union	64,931	75,734	58,748	61,453	61,139	61,139
India	24,259	24,170	22,570	25,900	27,150	27,150
Indonesia	9,100	9,000	10,500	10,900	11,350	11,400
Mexico	22,880	25,480	25,971	27,575	26,500	26,800
Nigeria	8,423	10,791	9,540	10,755	10,500	10,500
Pakistan	4,944	4,937	5,300	6,100	6,000	6,100
Philippines	7,532	7,671	6,970	8,131	8,200	8,040
Russia	11,635	11,325	13,168	15,305	13,229	13,229
South Africa	14,925	10,629	8,214	17,551	13,000	13,200
Ukraine	30,900	28,450	23,333	27,969	24,115	24,115
Others	100,174	104,993	100,899	100,481	102,603	101,950
Subtotal	644,878	662,298	626,704	690,715	670,777	665,114
United States	351,272	361,091	345,506	384,778	370,960	370,960
World Total	996,150	1,023,389	972,210	1,075,493	1,041,737	1,036,074
Total Consumption						
Argentina	8,800	9,300	9,300	11,200	11,500	10,300
Brazil	55,000	57,000	57,500	60,500	62,500	62,500
Canada	12,675	12,820	12,381	12,700	14,200	14,200
China	208,000	202,000	217,500	232,000	241,000	241,000
Egypt	13,200	13,900	14,850	15,100	15,900	15,900
European Union	76,796	77,880	73,500	73,700	75,800	75,800
India	19,600	22,350	23,550	24,900	26,500	26,500
Indonesia	11,900	12,200	12,100	12,300	12,200	12,200
Iran	6,800	7,400	8,800	10,100	12,100	11,600
Japan	15,000	14,600	15,200	15,200	15,100	15,100
Korea, South	9,891	10,250	10,123	9,410	9,800	9,800
Mexico	31,700	34,550	37,300	40,400	42,300	42,300
Nigeria	8,500	10,700	9,600	11,100	10,900	10,900
South Africa	11,500	11,650	10,970	13,125	12,200	12,200
Vietnam	8,200	9,400	12,200	12,900	13,400	13,400
Others	157,559	162,741	163,836	165,897	170,817	170,942
Subtotal	661,861	686,149	669,221	744,674	754,500	750,660
United States	292,958	301,792	298,785	313,854	319,927	318,530
World Total	954,819	987,941	968,006	1,058,528	1,074,427	1,069,190
Ending Stocks						
Argentina	1,408	2,898	1,459	5,276	5,267	3,981
Brazil	13,972	7,842	6,769	14,019	11,419	10,919
China	81,323	100,472	110,774	100,713	79,554	79,554
European Union	6,891	9,626	6,719	7,542	7,081	7,081
Iran	4,476	5,716	6,056	6,296	5,736	5,736
Mexico	2,603	4,090	5,213	5,418	4,818	4,818
South Africa	2,198	2,448	1,096	3,332	2,196	2,632
Others	30,116	32,661	31,722	30,047	29,058	27,624
Subtotal	142,987	165,753	169,808	172,643	145,129	142,345
United States	31,292	43,974	44,123	58,253	54,038	55,435
World Total	174,279	209,727	213,931	230,896	199,167	197,780

Regional Corn Imports, Production, Consumption, and Stocks

Thousand Metric Tons

	2013/14	2014/15	2015/16	2016/17	Mar 2017/18	Apr 2017/18
TY Imports						
North America	12,354	13,686	16,742	16,846	19,000	18,700
Central America	2,922	3,456	3,938	3,799	3,900	3,900
South America	12,025	12,042	12,462	13,609	13,440	13,140
European Union - 28	16,014	8,908	13,794	15,241	16,200	16,200
Former Soviet Union - 12	452	500	361	374	445	445
Middle East	13,438	15,157	14,886	17,159	19,500	19,600
North Africa	17,101	15,622	16,873	16,775	19,300	19,300
Sub-Saharan Africa	2,488	3,323	5,408	5,900	3,380	3,280
East Asia	33,057	34,198	33,186	31,119	33,250	32,750
Southeast Asia	12,768	14,680	15,739	13,926	15,200	14,705
Caribbean	2,330	2,444	2,597	2,657	2,840	2,840
Others	1,468	1,588	2,378	2,178	2,225	2,325
Total	126,417	125,604	138,364	139,583	148,680	147,185
Production						
North America	388,346	398,058	385,036	425,546	411,560	411,860
South America	118,260	127,572	108,837	149,574	141,761	135,694
European Union - 28	64,931	75,734	58,748	61,453	61,139	61,139
Other Europe	7,297	9,132	7,427	9,407	5,484	5,484
Former Soviet Union - 12	47,034	43,951	39,872	47,268	42,029	41,929
Middle East	8,763	7,785	9,213	8,587	9,128	9,128
North Africa	5,919	6,058	6,096	6,130	6,201	6,201
Sub-Saharan Africa	64,995	67,271	60,982	69,369	68,269	68,469
East Asia	220,582	217,995	226,883	221,893	218,150	218,140
South Asia	34,100	34,137	32,861	37,203	38,836	38,910
Central America	3,878	3,588	3,278	3,789	3,870	3,870
Southeast Asia	30,724	30,655	31,697	33,845	34,048	33,988
Others	1,321	1,453	1,280	1,429	1,262	1,262
Total	996,150	1,023,389	972,210	1,075,493	1,041,737	1,036,074
Domestic Consumption						
North America	337,333	349,162	348,466	366,954	376,427	375,030
South America	84,206	87,476	87,921	91,358	95,485	94,060
European Union - 28	76,796	77,880	73,500	73,700	75,800	75,800
Other Europe	5,897	6,297	6,522	6,878	5,995	5,995
Former Soviet Union - 12	21,755	20,807	19,325	20,084	17,960	17,860
Middle East	19,966	21,738	23,502	25,428	28,780	28,880
North Africa	20,800	22,100	22,990	23,390	25,200	25,200
Sub-Saharan Africa	63,399	67,580	66,127	69,059	69,782	69,782
East Asia	239,185	233,127	249,279	263,066	272,650	272,300
South Asia	29,782	32,773	35,140	37,290	39,490	40,090
Southeast Asia	38,754	40,849	43,634	45,647	46,700	46,300
Central America	6,625	6,760	7,180	7,520	7,740	7,740
Others	3,581	3,984	3,909	4,012	4,135	4,135
Total	948,079	970,533	987,495	1,034,386	1,066,144	1,063,172
Ending Stocks						
North America	35,495	49,466	51,549	65,712	60,697	62,094
South America	19,028	13,763	11,290	21,990	19,911	17,189
European Union - 28	6,891	9,626	6,719	7,542	7,081	7,081
Other Europe	529	896	849	1,477	916	916
Former Soviet Union - 12	2,684	3,164	2,593	2,974	2,228	2,228
Middle East	5,970	7,050	7,492	7,548	7,301	7,301
North Africa	3,175	3,259	2,988	2,455	2,746	2,746
Sub-Saharan Africa	7,358	9,349	7,046	8,412	7,033	7,469
East Asia	84,864	103,922	114,710	104,543	83,256	83,083
South Asia	2,937	3,871	2,481	3,095	3,366	3,240
Southeast Asia	4,318	4,143	4,991	3,856	3,388	3,189
Central America	634	759	791	851	866	866
Others	396	459	432	441	378	378
Total	174,279	209,727	213,931	230,896	199,167	197,780

NOTES: Regional definitions appear on last page of this circular. Imports are reported on a trade year basis. All other data are reported using local marketing years.

World Barley Trade
October/September Year, Thousand Metric Tons

	2013/14	2014/15	2015/16	2016/17	2017/18 Mar	2017/18 Apr
TY Exports						
Argentina	2,829	1,599	2,836	2,696	2,100	2,500
Australia	6,261	5,266	5,401	9,193	5,800	5,800
Canada	1,714	1,386	1,147	1,770	1,500	1,500
European Union	4,926	10,642	8,644	5,683	6,200	6,200
Kazakhstan	596	479	807	823	1,000	1,100
Moldova	26	81	59	143	150	150
Russia	2,791	5,807	3,735	3,629	5,200	5,400
Serbia	18	37	33	33	50	50
Ukraine	3,827	4,332	4,673	5,337	4,900	4,900
Uruguay	36	43	42	111	50	50
Others	562	131	49	30	55	55
Subtotal	23,586	29,803	27,426	29,448	27,005	27,705
United States	336	291	161	125	130	130
World Total	23,922	30,094	27,587	29,573	27,135	27,835
TY Imports						
Algeria	778	723	864	533	700	700
Belarus	11	1	7	109	100	100
Brazil	337	489	551	737	650	550
China	4,891	9,859	5,869	8,104	7,000	7,200
Colombia	253	249	301	285	280	280
Egypt	46	98	72	14	100	100
European Union	58	269	315	447	500	500
India	1	2	67	324	400	300
Iran	1,100	1,900	1,700	2,200	2,100	2,900
Israel	304	278	319	376	350	350
Japan	1,294	1,097	1,154	1,197	1,100	1,100
Jordan	997	759	902	759	700	700
Kuwait	436	412	511	502	200	200
Libya	681	1,001	1,324	1,085	1,300	1,300
Morocco	471	276	958	358	500	500
Saudi Arabia	8,500	8,200	10,400	8,400	8,000	8,000
Syria	100	20	20	250	150	150
Tunisia	456	483	696	501	600	600
Turkey	596	332	146	291	500	600
United Arab Emirates	468	393	668	400	400	400
Others	1,251	1,561	1,153	1,306	1,016	956
Subtotal	23,029	28,402	27,997	28,178	26,646	27,486
Unaccounted	370	1,262	-762	1,178	139	119
United States	523	430	352	217	350	230
World Total	23,922	30,094	27,587	29,573	27,135	27,835

TY=Trade Year, see Endnotes.

World Barley Production, Consumption, and Stocks
Local Marketing Years, Thousand Metric Tons

	2013/14	2014/15	2015/16	2016/17	2017/18 Mar	2017/18 Apr
Production						
Argentina	4,750	2,900	4,940	3,300	3,200	3,200
Australia	9,174	8,646	8,993	12,921	8,000	8,000
Belarus	1,674	1,988	1,849	1,253	1,900	1,420
Canada	10,237	7,119	8,226	8,784	7,900	7,900
China	1,700	1,810	1,870	1,752	1,800	1,800
Ethiopia	1,908	1,953	1,950	2,050	2,070	2,070
European Union	59,674	60,609	62,095	59,860	58,728	58,728
India	1,752	1,831	1,613	1,440	1,750	1,750
Iran	2,800	3,200	3,000	3,000	3,100	3,100
Iraq	944	1,000	1,550	1,550	1,325	1,325
Kazakhstan	2,539	2,412	2,675	3,231	3,305	3,305
Morocco	2,723	1,638	3,400	620	2,000	2,000
Russia	15,389	20,026	17,083	17,547	20,183	20,183
Turkey	7,300	4,000	7,400	4,750	6,400	6,400
Ukraine	7,561	9,450	8,751	9,874	8,695	8,695
Others	9,469	9,179	9,498	9,675	8,919	8,945
Subtotal	139,594	137,761	144,893	141,607	139,275	138,821
United States	4,719	3,953	4,750	4,353	3,090	3,090
World Total	144,313	141,714	149,643	145,960	142,365	141,911
Total Consumption						
Algeria	2,050	2,050	2,150	2,050	1,850	1,850
Australia	2,800	3,000	3,300	3,500	2,800	2,800
Belarus	1,800	2,000	1,850	1,400	2,000	1,500
Canada	7,718	6,471	6,960	6,762	7,000	7,000
China	6,300	11,600	7,900	9,800	9,100	9,300
Ethiopia	1,925	1,975	1,990	2,025	2,075	2,075
European Union	53,400	50,937	51,375	55,000	53,500	53,500
India	1,200	1,400	1,520	1,900	2,050	2,000
Iran	4,500	4,600	5,000	4,500	5,500	6,000
Kazakhstan	1,900	2,000	2,000	2,200	2,300	2,200
Morocco	2,300	2,638	3,350	2,200	2,450	2,450
Russia	12,700	14,100	13,700	14,700	15,100	15,000
Saudi Arabia	8,625	8,525	10,225	9,825	8,825	8,825
Turkey	6,950	5,350	6,900	5,500	6,500	6,700
Ukraine	5,100	5,500	4,300	4,900	4,100	4,100
Others	17,039	16,760	18,605	18,286	17,448	17,366
Subtotal	136,143	138,070	143,221	145,760	142,286	141,990
United States	4,775	4,235	4,408	4,375	4,289	4,072
World Total	140,918	142,305	147,629	150,135	146,575	146,062
Ending Stocks						
Canada	1,950	1,217	1,449	2,028	1,478	1,478
European Union	5,621	5,834	6,060	5,649	5,177	5,177
Iran	618	1,418	1,118	818	1,118	1,118
Russia	880	1,522	741	853	786	786
Saudi Arabia	3,389	3,074	4,059	2,344	1,529	1,529
Turkey	899	332	961	338	718	718
Ukraine	2,071	1,565	1,609	1,237	937	937
Others	7,811	7,766	8,233	6,695	4,810	4,963
Subtotal	23,239	22,728	24,230	19,962	16,553	16,706
United States	1,791	1,711	2,223	2,316	1,313	1,421
World Total	25,030	24,439	26,453	22,278	17,866	18,127

Regional Barley Imports, Production, Consumption, and Stocks

Thousand Metric Tons

	2013/14	2014/15	2015/16	2016/17	Mar 2017/18	Apr 2017/18
TY Imports						
North America	640	779	615	293	500	290
South America	886	1,169	1,157	1,252	1,115	1,025
European Union - 28	58	269	315	447	500	500
Other Europe	158	124	81	121	120	120
Former Soviet Union - 12	348	239	162	436	265	265
Middle East	12,537	12,399	14,798	13,503	12,475	13,375
North Africa	2,432	2,581	3,914	2,491	3,200	3,200
Sub-Saharan Africa	116	138	31	75	135	135
East Asia	6,320	11,080	7,136	9,413	8,210	8,430
South Asia	11	22	133	339	451	351
Oceania	46	32	7	25	25	25
Total	23,552	28,832	28,349	28,395	26,996	27,716
Production						
North America	15,550	11,918	13,711	14,115	11,725	11,725
South America	5,743	3,794	5,925	4,714	4,292	4,292
European Union - 28	59,674	60,609	62,095	59,860	58,728	58,728
Other Europe	1,228	1,241	1,258	1,333	1,286	1,286
Former Soviet Union - 12	29,145	35,637	32,633	34,110	36,211	35,731
Middle East	12,043	8,653	12,558	9,725	11,235	11,235
North Africa	4,739	3,913	5,275	2,203	3,676	3,676
Sub-Saharan Africa	2,349	2,423	2,482	2,605	2,550	2,577
East Asia	1,991	2,134	2,158	2,047	2,109	2,108
South Asia	2,261	2,340	2,118	1,963	2,257	2,257
Oceania	9,590	9,052	9,430	13,285	8,296	8,296
Total	144,313	141,714	149,643	145,960	142,365	141,911
Domestic Consumption						
North America	13,243	11,556	12,293	12,087	12,189	11,922
South America	3,528	3,398	3,633	3,474	3,365	3,315
European Union - 28	53,400	50,937	51,375	55,000	53,500	53,500
Other Europe	1,334	1,414	1,373	1,404	1,387	1,387
Former Soviet Union - 12	23,460	25,524	24,002	25,461	25,718	25,018
Middle East	24,410	22,186	26,775	24,368	24,636	25,336
North Africa	6,282	7,120	8,203	6,697	6,948	6,947
Sub-Saharan Africa	2,453	2,471	2,595	2,633	2,680	2,680
East Asia	8,009	13,162	9,481	11,441	10,686	10,905
South Asia	1,713	1,923	2,053	2,458	2,628	2,578
Oceania	3,250	3,450	3,750	3,900	3,150	3,150
Total	141,082	143,141	145,533	148,923	146,887	146,738
Ending Stocks						
North America	3,974	3,326	4,058	4,759	3,141	3,204
South America	847	772	1,040	745	434	586
European Union - 28	5,621	5,834	6,060	5,649	5,177	5,177
Other Europe	237	160	79	97	66	66
Former Soviet Union - 12	3,670	3,752	2,963	2,836	2,364	2,384
Middle East	5,781	5,508	6,755	4,131	3,785	3,785
North Africa	2,505	2,105	2,838	1,186	1,034	1,034
Sub-Saharan Africa	337	434	339	379	383	411
East Asia	1,038	1,090	904	923	558	556
South Asia	247	259	276	217	197	197
Oceania	773	1,199	1,141	1,356	727	727
Total	25,030	24,439	26,453	22,278	17,866	18,127

NOTES: Regional definitions appear on last page of this circular. Imports are reported on a trade year basis. All other data are reported using local marketing years.

World Sorghum Trade
October/September Year, Thousand Metric Tons

	2013/14	2014/15	2015/16	2016/17	2017/18 Mar	2017/18 Apr
TY Exports						
Argentina	953	954	772	457	600	550
Australia	408	1,701	717	542	300	300
China	11	9	23	34	30	30
Ethiopia	75	75	25	15	20	20
India	88	122	74	24	50	50
Nigeria	50	100	50	100	100	100
Ukraine	229	156	120	164	150	150
Others	219	199	116	247	100	110
Subtotal	2,033	3,316	1,897	1,583	1,350	1,310
United States	5,714	9,269	7,871	6,090	6,300	6,300
World Total	7,747	12,585	9,768	7,673	7,650	7,610
TY Imports						
Chile	109	98	134	42	150	100
China	4,161	10,162	8,284	5,209	5,600	5,600
Colombia	104	0	64	0	50	50
European Union	184	131	119	194	150	150
Japan	1,003	903	649	561	550	550
Kenya	94	117	105	130	100	100
Mexico	162	29	661	548	200	200
South Africa	61	86	120	100	80	80
South Sudan	108	87	19	50	150	150
Sudan	75	120	200	100	200	200
Others	652	416	593	428	350	350
Subtotal	6,713	12,149	10,948	7,362	7,580	7,530
Unaccounted	1,031	409	-1,278	267	20	30
United States	3	27	98	44	50	50
World Total	7,747	12,585	9,768	7,673	7,650	7,610

TY=Trade Year, see Endnotes.

World Sorghum Production, Consumption, and Stocks
Local Marketing Years, Thousand Metric Tons

	2013/14	2014/15	2015/16	2016/17	2017/18 Mar	2017/18 Apr
Production						
Argentina	4,400	3,500	3,375	3,400	3,500	3,000
Australia	1,282	2,209	1,791	1,000	1,300	1,300
Brazil	1,890	2,055	1,032	1,865	1,806	1,806
Burkina	1,880	1,708	1,436	1,680	1,800	1,800
Cameroon	1,260	1,150	1,150	1,150	1,150	1,150
Chad	800	922	1,266	1,460	1,100	1,100
China	2,892	2,885	2,750	2,985	3,200	3,200
Ethiopia	3,829	4,339	3,900	3,600	3,765	3,765
India	5,542	5,445	4,238	4,570	4,660	4,660
Mali	820	1,272	1,527	1,394	1,300	1,300
Mexico	8,500	6,270	5,587	4,638	4,750	4,750
Niger	1,320	1,426	1,877	1,808	1,700	1,700
Nigeria	5,300	6,741	5,664	6,887	6,550	6,550
Sudan	4,524	6,281	2,388	5,864	4,500	4,500
Tanzania	832	883	820	800	800	800
Others	7,509	8,176	7,447	7,060	7,240	7,200
Subtotal	52,580	55,262	46,248	50,161	49,121	48,581
United States	9,966	10,988	15,158	12,199	9,242	9,242
World Total	62,546	66,250	61,406	62,360	58,363	57,823
Total Consumption						
Argentina	2,700	2,800	2,900	2,900	2,900	2,700
Australia	905	505	905	675	800	800
Brazil	2,000	2,000	1,150	1,700	1,800	1,800
Burkina	1,900	1,700	1,465	1,640	1,760	1,760
Cameroon	1,275	1,175	1,175	1,180	1,150	1,150
Chad	900	930	1,270	1,470	1,160	1,160
China	6,800	12,900	11,000	8,300	8,900	8,900
Ethiopia	3,900	4,100	4,100	3,750	3,800	3,800
India	5,200	5,100	4,600	4,500	4,600	4,600
Mali	950	1,200	1,527	1,394	1,350	1,350
Mexico	8,300	6,600	6,300	5,300	4,950	4,950
Niger	1,300	1,450	1,820	1,900	1,850	1,850
Nigeria	5,258	6,691	5,564	6,787	6,450	6,450
South Sudan	790	1,050	830	760	840	840
Sudan	4,600	6,000	3,100	5,814	4,800	4,800
Others	9,046	9,518	8,900	8,236	8,512	8,422
Subtotal	56,929	63,538	56,150	56,457	55,764	55,434
United States	4,130	2,459	6,187	6,212	3,303	3,176
World Total	61,059	65,997	62,337	62,669	59,067	58,610
Ending Stocks						
Argentina	1,202	971	952	889	852	689
Australia	177	252	234	259	259	259
Brazil	152	194	51	215	211	211
China	568	706	717	577	447	447
India	364	587	151	198	208	208
Nigeria	180	130	180	190	190	190
Sudan	357	743	226	301	196	196
Others	2,113	2,179	1,858	1,511	1,283	1,259
Subtotal	5,113	5,762	4,369	4,140	3,646	3,459
United States	864	468	930	850	617	744
World Total	5,977	6,230	5,299	4,990	4,263	4,203

Regional Sorghum Imports, Production, Consumption, and Stocks

Thousand Metric Tons

	2013/14	2014/15	2015/16	2016/17	Mar 2017/18	Apr 2017/18
TY Imports						
North America	165	56	759	592	250	250
South America	240	114	212	48	235	185
European Union - 28	184	131	119	194	150	150
Other Europe	0	0	0	0	0	0
Middle East	233	24	34	45	30	30
North Africa	41	1	1	5	0	0
Sub-Saharan Africa	511	662	663	675	695	695
East Asia	5,281	11,142	9,011	5,823	6,205	6,205
Southeast Asia	46	14	16	17	15	15
Others	15	32	231	7	50	50
Total	6,716	12,176	11,046	7,406	7,630	7,580
Production						
North America	18,466	17,258	20,745	16,837	13,992	13,992
Central America	327	326	337	326	335	335
Caribbean	112	125	123	118	91	91
South America	7,468	6,967	5,682	6,179	6,428	5,928
European Union - 28	703	887	674	639	659	659
Middle East	706	821	697	695	625	625
North Africa	767	809	752	755	755	755
Sub-Saharan Africa	23,748	28,122	23,208	27,780	25,953	25,913
East Asia	2,895	2,887	2,752	2,987	3,202	3,202
South Asia	5,661	5,560	4,399	4,719	4,790	4,790
Southeast Asia	57	55	55	50	50	50
Oceania	1,282	2,209	1,791	1,000	1,300	1,300
Others	354	224	191	275	183	183
Total	62,546	66,250	61,406	62,360	58,363	57,823
Domestic Consumption						
North America	12,430	9,059	12,487	11,512	8,253	8,126
Central America	317	321	345	321	335	335
Caribbean	112	125	123	120	91	91
South America	6,062	6,362	5,409	5,643	6,016	5,766
European Union - 28	880	995	800	790	800	800
Middle East	828	976	740	742	660	660
North Africa	813	785	752	755	755	755
Sub-Saharan Africa	24,183	27,751	24,383	28,208	26,813	26,773
East Asia	7,951	13,882	11,733	8,917	9,507	9,507
South Asia	5,334	5,247	4,972	4,665	4,780	4,780
Southeast Asia	64	95	69	70	60	60
Oceania	905	505	905	675	800	800
Others	75	75	75	100	55	55
Total	59,954	66,178	62,793	62,518	58,925	58,508
Ending Stocks						
North America	1,511	806	1,216	1,022	801	916
Central America	21	26	13	13	8	8
South America	1,548	1,310	1,140	1,155	1,134	957
European Union - 28	18	27	16	31	35	35
Middle East	27	39	35	24	19	19
North Africa	22	47	48	53	53	53
Sub-Saharan Africa	1,586	2,302	1,609	1,547	1,210	1,212
East Asia	627	765	772	629	499	499
South Asia	364	587	151	198	208	208
Oceania	177	252	234	259	259	259
Others	76	69	65	59	37	37
Total	5,977	6,230	5,299	4,990	4,263	4,203

NOTES: Regional definitions appear on last page of this circular. Imports are reported on a trade year basis. All other data are reported using local marketing years.

World Oats Trade
October/September Year, Thousand Metric Tons

	2013/14	2014/15	2015/16	2016/17	2017/18 Mar	2017/18 Apr
TY Exports						
Australia	267	264	214	455	550	550
Canada	1,732	1,734	1,667	1,557	1,600	1,600
Chile	49	84	26	27	30	30
European Union	291	231	220	179	200	200
Kazakhstan	6	0	5	12	10	10
Russia	6	14	16	14	10	10
Ukraine	6	46	48	19	50	50
Others	10	10	8	3	10	10
Subtotal	2,367	2,383	2,204	2,266	2,460	2,460
United States	29	25	36	44	30	30
World Total	2,396	2,408	2,240	2,310	2,490	2,490
TY Imports						
Algeria	12	24	31	25	25	25
Bosnia and Herzegovina	3	4	4	6	5	5
Canada	27	12	11	18	10	10
China	116	162	172	278	500	500
Colombia	2	2	1	1	5	5
Ecuador	21	21	38	21	30	30
European Union	3	4	9	3	5	5
Japan	46	47	50	48	50	50
Mexico	93	86	77	119	100	120
Norway	38	4	7	3	5	5
Russia	1	1	4	11	5	5
Serbia	2	2	1	0	5	5
South Africa	19	46	31	24	30	30
Switzerland	51	49	41	54	50	50
Turkey	0	4	0	5	5	5
Others	7	10	8	10	5	5
Subtotal	441	478	485	626	835	855
Unaccounted	89	162	223	145	155	135
United States	1,866	1,768	1,532	1,539	1,500	1,500
World Total	2,396	2,408	2,240	2,310	2,490	2,490

TY=Trade Year, see Endnotes.

World Oats Production, Consumption, and Stocks
Local Marketing Years, Thousand Metric Tons

	2013/14	2014/15	2015/16	2016/17	2017/18 Mar	2017/18 Apr
Production						
Algeria	110	110	110	110	110	110
Argentina	445	525	553	785	660	492
Australia	1,255	1,198	1,300	2,126	1,100	1,100
Belarus	352	522	492	390	500	500
Brazil	380	307	351	828	682	682
Canada	3,906	2,979	3,428	3,195	3,700	3,700
Chile	610	421	533	713	670	670
China	235	255	265	290	300	300
European Union	8,380	7,821	7,524	8,036	8,029	8,029
Kazakhstan	305	226	244	335	285	285
Mexico	91	93	85	72	90	90
Norway	224	283	286	330	300	300
Russia	4,932	5,267	4,527	4,750	5,441	5,441
Turkey	210	210	210	210	210	210
Ukraine	467	610	498	510	481	481
Others	319	291	320	350	327	327
Subtotal	22,221	21,118	20,726	23,030	22,885	22,717
United States	938	1,019	1,300	940	717	717
World Total	23,159	22,137	22,026	23,970	23,602	23,434
Total Consumption						
Algeria	118	126	141	132	135	135
Argentina	425	525	550	760	690	525
Australia	950	950	1,025	1,500	800	800
Belarus	375	500	500	400	500	500
Brazil	375	305	345	775	705	705
Canada	1,660	1,676	1,611	1,814	2,100	2,100
Chile	570	355	485	655	660	660
China	350	400	420	560	780	780
European Union	8,075	7,730	7,400	8,000	7,800	7,800
Kazakhstan	275	225	245	274	275	275
Mexico	185	175	190	195	190	210
Norway	245	295	295	315	320	320
Russia	4,900	5,200	4,600	4,800	5,400	5,400
Turkey	215	215	210	210	215	215
Ukraine	475	600	450	450	450	450
Others	492	466	482	524	510	510
Subtotal	19,905	19,745	19,107	21,570	21,633	21,519
United States	2,757	2,447	2,702	2,539	2,684	2,604
World Total	22,662	22,192	21,809	24,109	24,317	24,123
Ending Stocks						
Australia	105	93	143	308	58	58
Canada	1,054	673	930	690	700	700
Chile	45	27	62	86	70	66
China	20	37	54	62	82	82
European Union	894	770	690	579	613	613
Kazakhstan	34	33	27	75	75	75
Russia	230	289	199	147	183	183
Others	245	229	219	331	225	228
Subtotal	2,627	2,151	2,324	2,278	2,006	2,005
United States	359	780	824	731	286	315
World Total	2,986	2,931	3,148	3,009	2,292	2,320

Regional Oats Imports, Production, Consumption, and Stocks

Thousand Metric Tons

	2013/14	2014/15	2015/16	2016/17	Mar 2017/18	Apr 2017/18
TY Imports						
North America	1,986	1,866	1,620	1,676	1,610	1,630
South America	29	30	47	28	40	40
European Union - 28	3	4	9	3	5	5
Other Europe	94	62	53	63	65	65
Former Soviet Union - 12	2	1	4	11	5	5
Middle East	0	4	0	5	5	5
North Africa	12	24	31	29	25	25
Sub-Saharan Africa	19	46	31	24	30	30
East Asia	162	209	222	326	550	550
Oceania	0	0	0	0	0	0
Total	2,307	2,246	2,017	2,165	2,335	2,355
Production						
North America	4,935	4,091	4,813	4,207	4,507	4,507
South America	1,478	1,281	1,478	2,372	2,055	1,887
European Union - 28	8,380	7,821	7,524	8,036	8,029	8,029
Other Europe	359	411	418	464	423	423
Former Soviet Union - 12	6,062	6,631	5,767	5,991	6,713	6,713
Middle East	210	210	210	210	210	210
North Africa	156	147	166	175	175	175
Sub-Saharan Africa	59	55	55	55	55	55
East Asia	237	257	266	291	301	301
Oceania	1,283	1,233	1,329	2,169	1,134	1,134
Total	23,159	22,137	22,026	23,970	23,602	23,434
Domestic Consumption						
North America	4,602	4,298	4,503	4,548	4,974	4,914
South America	1,447	1,245	1,445	2,273	2,138	1,973
European Union - 28	8,075	7,730	7,400	8,000	7,800	7,800
Other Europe	435	479	484	506	506	506
Former Soviet Union - 12	6,031	6,531	5,801	5,930	6,631	6,631
Middle East	215	215	210	210	215	215
North Africa	164	163	197	201	200	200
Sub-Saharan Africa	95	94	87	85	85	85
East Asia	400	450	470	610	830	830
Oceania	978	985	1,054	1,540	835	835
Total	22,442	22,190	21,651	23,903	24,214	23,989
Ending Stocks						
North America	1,417	1,459	1,758	1,425	990	1,019
South America	129	102	143	243	158	157
European Union - 28	894	770	690	579	613	613
Other Europe	52	46	35	53	35	35
Former Soviet Union - 12	346	397	298	316	333	333
Middle East	8	6	6	6	6	6
North Africa	1	1	1	1	1	1
Sub-Saharan Africa	11	18	17	11	11	11
East Asia	23	39	57	64	85	85
Oceania	105	93	143	311	60	60
Total	2,986	2,931	3,148	3,009	2,292	2,320

NOTES: Regional definitions appear on last page of this circular. Imports are reported on a trade year basis. All other data are reported using local marketing years.

World Rye Trade
October/September Year, Thousand Metric Tons

	2013/14	2014/15	2015/16	2016/17	2017/18 Mar	2017/18 Apr
TY Exports						
Belarus	0	0	24	8	20	20
Canada	97	89	112	132	150	150
European Union	201	167	160	139	100	100
Russia	83	121	23	29	50	50
Ukraine	59	13	21	14	10	10
Others	1	1	0	0	0	0
Subtotal	441	391	340	322	330	330
United States	6	3	6	4	5	5
World Total	447	394	346	326	335	335
TY Imports						
European Union	96	96	50	16	50	50
Israel	33	18	12	4	15	15
Japan	37	22	16	24	20	20
Korea, South	8	4	5	4	5	5
Norway	21	6	2	4	10	10
Russia	5	5	5	4	5	5
Switzerland	6	6	3	2	5	5
Others	1	6	16	3	0	0
Subtotal	207	163	109	61	110	110
Unaccounted	36	-31	20	93	25	25
United States	204	262	217	172	200	200
World Total	447	394	346	326	335	335

TY=Trade Year, see Endnotes.

World Rye Production, Consumption, and Stocks
Local Marketing Years, Thousand Metric Tons

	2013/14	2014/15	2015/16	2016/17	2017/18 Mar	2017/18 Apr
Production						
Argentina	52	97	61	79	82	87
Belarus	648	867	753	651	800	670
Canada	223	218	226	415	320	320
European Union	10,151	8,864	7,833	7,493	7,484	7,484
Russia	3,360	3,279	2,084	2,538	2,544	2,544
Turkey	365	300	350	350	350	350
Ukraine	638	475	394	394	510	510
Others	130	176	178	145	164	164
Subtotal	15,567	14,276	11,879	12,065	12,254	12,129
United States	194	183	295	342	246	246
World Total	15,761	14,459	12,174	12,407	12,500	12,375
Total Consumption						
Argentina	52	97	61	79	82	87
Australia	19	19	22	25	26	26
Belarus	700	850	800	700	800	650
Canada	107	134	119	169	160	160
European Union	9,650	8,600	8,025	7,700	7,600	7,600
Kazakhstan	40	65	37	33	35	35
Norway	35	46	67	23	52	52
Russia	3,100	3,250	2,150	2,400	2,600	2,600
Turkey	350	325	350	350	350	350
Ukraine	625	475	420	380	510	510
Others	142	108	90	94	103	103
Subtotal	14,815	13,974	12,163	11,974	12,339	12,194
United States	424	406	515	499	448	448
World Total	15,239	14,380	12,678	12,473	12,787	12,642
Ending Stocks						
Belarus	149	166	99	50	30	50
Canada	44	42	51	155	165	165
European Union	1,204	1,386	1,084	817	651	651
Kazakhstan	8	4	4	12	16	16
Russia	344	264	155	286	185	185
Turkey	33	14	14	14	14	14
Ukraine	128	106	75	77	67	67
Others	4	3	2	1	0	0
Subtotal	1,914	1,985	1,484	1,412	1,128	1,148
United States	7	15	12	18	15	15
World Total	1,921	2,000	1,496	1,430	1,143	1,163

Regional Rye Imports, Production, Consumption, and Stocks

Thousand Metric Tons

	2013/14	2014/15	2015/16	2016/17	Mar 2017/18	Apr 2017/18
TY Imports						
North America	204	262	217	172	200	200
South America	0	0	0	0	0	0
European Union - 28	96	96	50	16	50	50
Other Europe	28	12	5	6	15	15
Former Soviet Union - 12	5	5	21	7	5	5
Middle East	33	24	12	4	15	15
Sub-Saharan Africa	0	0	0	0	0	0
East Asia	45	26	21	28	25	25
Oceania	0	0	0	0	0	0
Total	411	425	326	233	310	310
Production						
North America	417	401	521	757	566	566
South America	59	106	69	91	94	99
European Union - 28	10,151	8,864	7,833	7,493	7,484	7,484
Other Europe	57	83	108	64	84	84
Former Soviet Union - 12	4,689	4,682	3,268	3,624	3,893	3,763
Middle East	365	300	350	350	350	350
Sub-Saharan Africa	3	3	3	3	3	3
East Asia	0	0	0	0	0	0
Oceania	20	20	22	25	26	26
Total	15,761	14,459	12,174	12,407	12,500	12,375
Domestic Consumption						
North America	531	540	634	668	608	608
South America	59	106	69	91	94	99
European Union - 28	9,650	8,600	8,025	7,700	7,600	7,600
Other Europe	86	97	112	69	99	99
Former Soviet Union - 12	4,465	4,640	3,407	3,513	3,945	3,795
Middle East	383	343	362	354	365	365
Sub-Saharan Africa	3	3	3	3	3	3
East Asia	48	27	22	29	26	26
Oceania	19	19	22	25	26	26
Total	15,244	14,375	12,656	12,452	12,766	12,621
Ending Stocks						
North America	51	57	63	173	180	180
South America	0	0	0	0	0	0
European Union - 28	1,204	1,386	1,084	817	651	651
Other Europe	0	0	0	0	0	0
Former Soviet Union - 12	629	540	333	425	298	318
Middle East	33	14	14	14	14	14
Sub-Saharan Africa	0	0	0	0	0	0
East Asia	4	3	2	1	0	0
Oceania	0	0	0	0	0	0
Total	1,921	2,000	1,496	1,430	1,143	1,163

NOTES: Regional definitions appear on last page of this circular. Imports are reported on a trade year basis. All other data are reported using local marketing years.



HISTORICAL DATA SERIES FOR SELECTED REGIONS AND COUNTRIES

CONTENTS

European Union: Grain Supply and Demand	41
China: Grain Supply and Demand	42
Other Europe: Grain Supply and Demand	43
Former Soviet Union: Grain Supply and Demand.....	44
Wheat Supply and Disappearance: Selected Exporters	48
Corn Supply and Disappearance: Selected Exporters.....	50
Barley Supply and Disappearance: Selected Exporters	52
Sorghum Supply and Disappearance: Selected Exporters	53
U.S. Grains: Supply and Distribution.....	54
Total Wheat and Coarse Grains: Supply and Demand	55
World Wheat and Coarse Grains: Supply and Demand	56
World Corn and Barley: Supply and Demand	57
World Rice: Supply and Demand	58

European Union: Grain Supply and Demand

Wheat and Coarse Grains Millions of Metric Tons/Hectares

	Area Harvested	Yield	Production	Imports	Exports	Feed Dom.	Domestic Consumption	Ending Stocks
Wheat								
2006/07	24.7	5.1	125.7	5.2	13.9	60.2	126.2	14.8
2007/08	24.9	4.9	120.8	6.8	12.4	52.4	117.2	12.8
2008/09	26.8	5.7	151.9	7.7	25.4	60.5	127.6	19.4
2009/10	26.0	5.4	139.7	5.4	22.3	57.5	125.6	16.6
2010/11	26.0	5.3	136.7	4.6	23.1	52.5	122.8	11.9
2011/12	25.8	5.3	138.2	7.4	16.7	57.5	127.2	13.5
2012/13	26.0	5.2	133.9	5.3	22.8	51.0	119.3	10.7
2013/14	25.9	5.6	144.6	4.0	32.0	49.0	117.3	9.9
2014/15	26.7	5.9	156.9	6.0	35.5	55.0	124.7	12.7
2015/16	26.8	6.0	160.5	6.9	34.7	59.0	129.9	15.6
2016/17	27.3	5.3	145.2	5.3	27.3	56.0	128.0	10.8
2017/18	26.4	5.7	151.6	5.5	24.0	58.5	130.9	13.0
Coarse Grains								
2006/07	32.4	4.3	140.3	8.1	4.5	112.9	150.9	15.7
2007/08	32.7	4.2	138.8	20.3	4.5	121.6	157.2	13.1
2008/09	34.1	4.8	165.2	3.1	5.7	116.1	154.5	21.3
2009/10	33.0	4.8	158.0	2.9	3.0	114.8	152.8	26.3
2010/11	30.2	4.7	143.2	8.5	6.2	116.9	155.0	16.9
2011/12	30.2	5.0	150.1	7.0	6.5	113.2	151.7	15.7
2012/13	31.4	4.6	146.2	11.8	7.4	113.7	153.3	13.1
2013/14	31.5	5.1	159.2	16.3	8.6	122.4	164.4	15.6
2014/15	30.8	5.5	170.7	9.2	14.0	121.6	162.6	18.9
2015/16	30.2	5.1	152.7	14.3	13.1	117.1	157.3	15.5
2016/17	29.4	5.2	152.6	15.8	8.1	120.1	160.7	15.1
2017/18	29.5	5.1	151.6	16.9	8.5	119.7	161.0	14.2
Wheat and Coarse Grains								
2006/07	57.1	4.7	265.9	13.2	18.5	173.1	277.1	30.5
2007/08	57.5	4.5	259.6	27.1	16.9	174.1	274.3	25.9
2008/09	60.9	5.2	317.2	10.8	31.1	176.6	282.1	40.7
2009/10	59.0	5.0	297.7	8.2	25.3	172.3	278.4	42.9
2010/11	56.3	5.0	279.9	13.1	29.3	169.4	277.8	28.8
2011/12	56.1	5.1	288.3	14.3	23.3	170.7	278.9	29.3
2012/13	57.4	4.9	280.1	17.1	30.2	164.7	272.6	23.8
2013/14	57.4	5.3	303.8	20.3	40.7	171.4	281.7	25.5
2014/15	57.5	5.7	327.6	15.2	49.4	176.6	287.3	31.6
2015/16	57.0	5.5	313.1	21.2	47.8	176.1	287.1	31.0
2016/17	56.7	5.3	297.8	21.1	35.4	176.1	288.7	25.9
2017/18	55.9	5.4	303.2	22.4	32.5	178.2	291.9	27.1

China: Grain Supply and Demand

Wheat and Coarse Grains Millions of Metric Tons/Hectares

	Area Harvested	Yield	Production	Imports	Exports	Feed Dom.	Domestic Consumption	Ending Stocks
Wheat								
2006/07	23.6	4.6	108.5	0.4	2.8	4.0	102.0	38.6
2007/08	23.7	4.6	109.3	0.0	2.8	8.0	106.0	39.1
2008/09	23.6	4.8	112.5	0.5	0.7	8.0	105.5	45.8
2009/10	24.3	4.7	115.1	1.4	0.9	10.0	107.0	54.4
2010/11	24.3	4.7	115.2	0.9	0.9	13.0	110.5	59.1
2011/12	24.3	4.8	117.4	2.9	1.0	24.0	122.5	55.9
2012/13	24.3	5.0	121.0	3.0	1.0	25.0	125.0	54.0
2013/14	24.1	5.1	121.9	6.8	0.9	16.0	116.5	65.3
2014/15	24.1	5.2	126.2	1.9	0.8	16.0	116.5	76.1
2015/16	24.1	5.4	130.2	3.5	0.7	10.5	112.0	97.0
2016/17	24.2	5.3	128.8	4.4	0.7	16.5	118.5	111.0
2017/18	24.0	5.4	129.8	4.0	1.0	13.5	117.0	126.8
Coarse Grains								
2006/07	31.1	5.1	158.8	1.2	5.5	104.7	153.2	38.0
2007/08	31.8	5.0	158.8	1.2	0.9	106.4	157.6	39.5
2008/09	32.2	5.3	172.1	1.7	0.2	108.8	160.9	52.1
2009/10	33.4	5.1	169.4	3.8	0.2	118.8	172.9	52.2
2010/11	34.6	5.3	183.5	2.7	0.2	128.4	188.1	50.1
2011/12	35.5	5.6	198.3	7.9	0.1	131.7	195.9	60.3
2012/13	37.1	5.7	211.8	5.6	0.1	145.7	209.3	68.3
2013/14	38.3	5.9	225.1	12.4	0.0	157.4	223.2	82.5
2014/15	39.2	5.7	222.4	25.7	0.0	158.4	228.7	101.9
2015/16	40.2	5.8	231.5	17.5	0.0	166.5	238.8	112.1
2016/17	38.9	5.8	226.9	16.1	0.1	173.9	252.9	101.9
2017/18	37.6	5.9	223.4	17.3	0.1	179.3	262.2	80.4
Wheat and Coarse Grains								
2006/07	54.7	4.9	267.2	1.5	8.2	108.7	255.2	76.5
2007/08	55.5	4.8	268.1	1.2	3.7	114.4	263.6	78.5
2008/09	55.8	5.1	284.6	2.1	0.9	116.8	266.4	97.9
2009/10	57.6	4.9	284.5	5.2	1.1	128.8	279.9	106.6
2010/11	58.9	5.1	298.6	3.6	1.1	141.4	298.6	109.2
2011/12	59.8	5.3	315.7	10.9	1.1	155.7	318.4	116.2
2012/13	61.3	5.4	332.9	8.6	1.1	170.7	334.3	122.2
2013/14	62.4	5.6	347.0	19.2	0.9	173.4	339.7	147.8
2014/15	63.2	5.5	348.6	27.6	0.8	174.4	345.2	178.0
2015/16	64.3	5.6	361.7	21.0	0.8	177.0	350.8	209.1
2016/17	63.1	5.6	355.7	20.5	0.9	190.4	371.4	213.0
2017/18	61.6	5.7	353.2	21.3	1.1	192.8	379.2	207.2

Other Europe: Grain Supply and Demand

Wheat and Coarse Grains Millions of Metric Tons/Hectares

	Area Harvested	Yield	Production	Imports	Exports	Feed Dom.	Domestic Consumption	Ending Stocks
Wheat								
2006/07	1.0	3.7	3.5	1.5	0.3	0.7	4.6	1.2
2007/08	1.0	3.8	3.7	1.9	0.5	1.0	4.8	1.5
2008/09	0.9	4.4	4.0	1.7	0.4	1.2	5.1	1.7
2009/10	1.0	3.9	3.8	1.7	0.5	1.0	4.9	1.7
2010/11	0.9	3.7	3.2	1.7	0.6	0.8	4.7	1.3
2011/12	0.9	4.2	3.6	1.9	0.5	1.0	4.9	1.4
2012/13	0.9	4.0	3.4	1.6	0.7	1.0	4.7	1.1
2013/14	0.9	4.6	4.2	1.9	1.3	1.2	4.9	1.0
2014/15	1.0	4.1	4.1	1.8	0.7	1.2	4.9	1.3
2015/16	0.9	4.7	4.4	1.8	1.0	1.2	4.9	1.6
2016/17	1.0	4.8	4.7	2.0	1.3	1.3	5.0	2.0
2017/18	0.9	4.6	4.2	1.9	1.0	1.3	5.0	2.0
Coarse Grains								
2006/07	2.0	4.9	9.8	0.8	0.9	8.5	9.6	1.3
2007/08	2.0	3.4	6.9	0.9	0.1	6.8	7.9	1.1
2008/09	2.1	4.6	9.7	0.6	1.5	7.6	8.7	1.1
2009/10	2.0	4.9	9.7	0.7	1.4	7.5	8.7	1.4
2010/11	2.0	5.0	10.0	0.7	2.0	7.3	8.7	1.4
2011/12	2.0	4.6	9.5	0.8	2.3	7.0	8.4	1.0
2012/13	2.1	3.2	6.6	0.8	0.6	5.9	7.1	0.6
2013/14	2.0	4.5	9.0	0.9	1.9	6.4	7.8	0.8
2014/15	1.8	6.0	10.9	0.8	3.1	7.0	8.3	1.1
2015/16	1.8	5.1	9.3	0.8	1.6	7.2	8.6	1.0
2016/17	1.8	6.3	11.3	0.7	2.5	7.6	8.9	1.6
2017/18	1.8	4.1	7.3	0.9	0.8	6.7	8.0	1.0
Wheat and Coarse Grains								
2006/07	3.0	4.5	13.3	2.3	1.2	9.2	14.2	2.6
2007/08	3.0	3.5	10.6	2.7	0.6	7.8	12.6	2.6
2008/09	3.0	4.6	13.7	2.3	1.9	8.8	13.8	2.9
2009/10	3.0	4.5	13.5	2.4	1.9	8.5	13.7	3.2
2010/11	2.9	4.6	13.2	2.4	2.6	8.1	13.4	2.7
2011/12	2.9	4.5	13.1	2.7	2.8	8.1	13.3	2.4
2012/13	2.9	3.4	10.0	2.4	1.3	7.0	11.8	1.7
2013/14	2.9	4.5	13.2	2.7	3.1	7.6	12.7	1.8
2014/15	2.8	5.3	15.0	2.5	3.7	8.1	13.2	2.4
2015/16	2.7	5.0	13.6	2.6	2.6	8.4	13.5	2.6
2016/17	2.8	5.8	16.1	2.7	3.8	8.8	14.0	3.6
2017/18	2.7	4.3	11.6	2.7	1.7	7.9	13.1	3.1

Former Soviet Union: Grain Supply and Demand
Wheat and Coarse Grains Millions of Metric Tons/Hectares

	Area Harvested	Yield	Production	Imports	Exports	Feed Dom.	Domestic Consumption	Ending Stocks
Wheat								
2011/12	49.7	2.3	115.0	8.0	39.7	28.4	80.0	26.6
2012/13	44.1	1.8	77.8	7.3	25.4	21.6	71.7	14.5
2013/14	47.7	2.2	103.8	7.5	37.3	22.7	72.8	15.8
2014/15	46.6	2.4	112.4	7.7	40.2	24.5	75.0	20.7
2015/16	48.9	2.4	118.0	7.4	51.5	26.7	77.8	16.8
2016/17	50.6	2.6	130.5	7.4	54.4	28.0	79.1	21.1
2017/18	50.6	2.8	142.8	7.9	64.8	32.6	84.1	22.9
Coarse Grains								
2011/12	27.0	2.9	78.6	1.1	24.6	38.0	53.9	6.3
2012/13	27.5	2.5	68.3	0.8	19.8	34.9	49.6	6.0
2013/14	29.4	3.0	87.9	0.8	30.9	40.7	56.4	7.4
2014/15	30.3	3.0	91.8	0.8	33.9	42.4	58.3	7.9
2015/16	28.0	2.9	82.6	0.5	31.3	38.3	53.4	6.2
2016/17	27.9	3.3	92.1	0.8	36.6	40.7	56.0	6.6
2017/18	27.5	3.2	88.8	0.7	37.0	38.7	53.8	5.3

Former Soviet Union: Grain Supply and Demand (Wheat)

Millions of Tons/Hectares

Country Mktg Year	Area Harvested	Yield	Production	MY Imports	MY Exports	Feed and Residual	Total Consumption	Ending Stocks
Former Soviet Union - 12								
Kazakhstan								
2014/15	11.9	1.1	13.0	0.6	5.5	2.0	6.8	3.3
2015/16	11.6	1.2	13.7	0.1	7.6	2.1	6.9	2.6
2016/17	12.4	1.2	15.0	0.1	7.4	2.1	6.9	3.4
2017/18	11.9	1.2	14.8	0.1	8.0	2.1	6.9	3.3
Russia								
2014/15	23.6	2.5	59.1	0.3	22.8	13.0	35.5	6.3
2015/16	25.6	2.4	61.0	0.8	25.5	14.0	37.0	5.6
2016/17	27.0	2.7	72.5	0.5	27.8	17.0	40.0	10.8
2017/18	27.3	3.1	85.0	0.4	38.5	21.5	45.0	12.7
Ukraine								
2014/15	6.3	3.9	24.8	0.0	11.3	4.0	11.5	5.7
2015/16	7.1	3.8	27.3	0.0	17.4	5.1	12.2	3.3
2016/17	6.5	4.1	26.8	0.0	18.1	3.6	10.3	1.8
2017/18	6.6	4.1	27.0	0.0	17.2	3.5	9.9	1.7
Uzbekistan								
2014/15	1.4	5.1	7.2	2.2	0.2	2.2	8.9	2.2
2015/16	1.4	5.1	7.2	2.7	0.2	2.3	9.4	2.5
2016/17	1.4	5.1	7.2	2.7	0.2	2.4	9.7	2.5
2017/18	1.4	5.1	7.2	2.8	0.2	2.5	9.9	2.4
Other Former Soviet Union - 12								
2014/15	3.3	2.5	8.4	4.5	0.4	3.3	12.3	3.2
2015/16	3.2	2.7	8.7	3.8	0.7	3.3	12.3	2.7
2016/17	3.4	2.7	9.0	4.0	0.9	2.9	12.2	2.6
2017/18	3.3	2.7	8.8	4.7	0.9	3.0	12.4	2.7
Total Former Soviet Union - 12								
2014/15	46.6	2.4	112.4	7.7	40.2	24.5	75.0	20.7
2015/16	48.9	2.4	118.0	7.4	51.5	26.7	77.8	16.8
2016/17	50.6	2.6	130.5	7.4	54.4	28.0	79.1	21.1
2017/18	50.6	2.8	142.8	7.9	64.8	32.6	84.1	22.9

Former Soviet Union: Grain Supply and Demand (Barley)

Millions of Tons/Hectares

Country Mktg Year	Area Harvested	Yield	Production	MY Imports	MY Exports	Feed and Residual	Total Consumption	Ending Stocks
Former Soviet Union - 12								
Kazakhstan								
2014/15	1.9	1.3	2.4	0.0	0.5	1.7	2.0	0.3
2015/16	2.0	1.3	2.7	0.0	0.8	1.7	2.0	0.1
2016/17	1.9	1.7	3.2	0.0	0.8	1.9	2.2	0.4
2017/18	2.1	1.6	3.3	0.0	1.1	1.9	2.2	0.4
Russia								
2014/15	8.8	2.3	20.0	0.1	5.3	9.4	14.1	1.5
2015/16	8.0	2.1	17.1	0.1	4.2	9.0	13.7	0.7
2016/17	8.0	2.2	17.5	0.2	2.9	10.0	14.7	0.9
2017/18	7.9	2.6	20.2	0.1	5.3	10.3	15.0	0.8
Ukraine								
2014/15	3.2	3.0	9.5	0.0	4.5	4.0	5.5	1.6
2015/16	3.0	2.9	8.8	0.0	4.4	2.8	4.3	1.6
2016/17	3.0	3.2	9.9	0.0	5.4	3.5	4.9	1.2
2017/18	2.7	3.3	8.7	0.0	4.9	2.8	4.1	0.9
Uzbekistan								
2014/15	0.1	3.2	0.2	0.1	0.0	0.2	0.3	0.0
2015/16	0.1	3.2	0.2	0.0	0.0	0.2	0.3	0.0
2016/17	0.1	3.2	0.2	0.1	0.0	0.2	0.3	0.0
2017/18	0.1	3.2	0.2	0.1	0.0	0.3	0.3	0.0
Other Former Soviet Union - 12								
2014/15	1.3	2.6	3.5	0.2	0.1	2.8	3.6	0.4
2015/16	1.3	2.9	3.9	0.0	0.1	2.9	3.7	0.5
2016/17	1.3	2.6	3.2	0.1	0.1	2.5	3.4	0.3
2017/18	1.2	2.7	3.3	0.2	0.1	2.6	3.4	0.2
Total Former Soviet Union - 12								
2014/15	15.3	2.3	35.6	0.3	10.4	18.1	25.5	3.8
2015/16	14.5	2.3	32.6	0.1	9.6	16.6	24.0	3.0
2016/17	14.2	2.4	34.1	0.4	9.2	18.2	25.5	2.8
2017/18	13.9	2.6	35.7	0.3	11.4	17.8	25.0	2.4

Former Soviet Union: Grain Supply and Demand (Corn)

Millions of Tons/Hectares

Country Mktg Year	Area Harvested	Yield	Production	MY Imports	MY Exports	Feed and Residual	Total Consumption	Ending Stocks
Former Soviet Union - 12								
Kazakhstan								
2014/15	0.1	5.3	0.7	0.0	0.0	0.5	0.6	0.1
2015/16	0.1	5.3	0.7	0.0	0.0	0.6	0.7	0.2
2016/17	0.1	5.6	0.8	0.0	0.0	0.6	0.7	0.2
2017/18	0.1	5.7	0.8	0.0	0.1	0.7	0.8	0.1
Russia								
2014/15	2.6	4.4	11.3	0.0	3.2	7.2	8.1	0.7
2015/16	2.7	4.9	13.2	0.0	4.7	7.8	8.7	0.6
2016/17	2.8	5.5	15.3	0.1	5.6	8.7	9.6	0.7
2017/18	2.7	4.9	13.2	0.1	4.8	7.8	8.7	0.5
Ukraine								
2014/15	4.6	6.2	28.5	0.0	19.7	7.2	8.6	1.5
2015/16	4.1	5.7	23.3	0.0	16.6	5.5	6.9	1.4
2016/17	4.2	6.6	28.0	0.0	21.3	5.1	6.5	1.5
2017/18	4.4	5.4	24.1	0.0	20.0	3.5	4.8	0.9
Uzbekistan								
2014/15	0.0	3.4	0.1	0.0	0.0	0.1	0.2	0.0
2015/16	0.0	3.4	0.1	0.0	0.0	0.1	0.2	0.0
2016/17	0.0	3.4	0.1	0.0	0.0	0.1	0.1	0.0
2017/18	0.0	3.4	0.1	0.0	0.0	0.1	0.1	0.0
Other Former Soviet Union - 12								
2014/15	0.9	3.7	3.4	0.4	0.3	3.1	3.4	0.8
2015/16	0.9	2.9	2.5	0.3	0.2	2.6	2.9	0.5
2016/17	0.9	3.6	3.1	0.2	0.2	2.8	3.1	0.5
2017/18	0.9	4.1	3.7	0.3	0.4	3.1	3.4	0.7
Total Former Soviet Union - 12								
2014/15	8.3	5.3	44.0	0.5	23.2	18.1	20.8	3.2
2015/16	7.8	5.1	39.9	0.4	21.5	16.6	19.3	2.6
2016/17	8.1	5.9	47.3	0.3	27.2	17.3	20.1	3.0
2017/18	8.2	5.1	41.9	0.4	25.3	15.2	17.9	2.2

Wheat Supply and Disappearance: Selected Exporters
Million Metric Tons/Hectares

Country Mktg Year	Area Harvested	Yield	Production	MY Imports	MY Exports	Feed and Residual	Total Consumption	Ending Stocks
Wheat Competitors								
Argentina								
2013/14	3.5	3.0	10.5	0.0	2.3	0.1	6.1	2.5
2014/15	5.0	2.8	13.9	0.0	5.3	0.3	6.4	4.8
2015/16	3.9	2.9	11.3	0.0	9.6	0.2	5.7	0.8
2016/17	5.6	3.3	18.4	0.0	13.8	0.1	5.2	0.2
2017/18	5.6	3.2	18.0	0.0	12.8	0.1	5.2	0.3
Australia								
2013/14	12.6	2.0	25.3	0.2	18.6	3.6	7.0	4.6
2014/15	12.4	1.9	23.7	0.2	16.6	3.8	7.2	4.7
2015/16	11.3	2.0	22.3	0.2	16.1	3.7	7.1	3.9
2016/17	11.7	2.6	30.4	0.1	22.6	3.9	7.4	4.4
2017/18	12.3	1.8	21.5	0.2	16.0	3.4	6.8	3.2
Canada								
2013/14	10.4	3.6	37.5	0.4	23.3	4.2	9.4	10.4
2014/15	9.5	3.1	29.4	0.5	24.2	4.0	9.1	7.1
2015/16	9.6	2.9	27.6	0.5	22.1	2.8	7.9	5.2
2016/17	8.9	3.6	31.7	0.5	20.2	5.4	10.4	6.8
2017/18	9.0	3.3	30.0	0.5	22.5	3.5	8.7	6.1
European Union								
2013/14	25.9	5.6	144.6	4.0	32.0	49.0	117.3	9.9
2014/15	26.7	5.9	156.9	6.0	35.5	55.0	124.7	12.7
2015/16	26.8	6.0	160.5	6.9	34.7	59.0	129.9	15.6
2016/17	27.3	5.3	145.2	5.3	27.3	56.0	128.0	10.8
2017/18	26.4	5.7	151.6	5.5	24.0	58.5	130.9	13.0
Kazakhstan								
2013/14	13.0	1.1	13.9	0.0	8.1	2.0	6.8	2.0
2014/15	11.9	1.1	13.0	0.6	5.5	2.0	6.8	3.3
2015/16	11.6	1.2	13.7	0.1	7.6	2.1	6.9	2.6
2016/17	12.4	1.2	15.0	0.1	7.4	2.1	6.9	3.4
2017/18	11.9	1.2	14.8	0.1	8.0	2.1	6.9	3.3
Russia								
2013/14	23.4	2.2	52.1	0.9	18.6	12.5	34.1	5.2
2014/15	23.6	2.5	59.1	0.3	22.8	13.0	35.5	6.3
2015/16	25.6	2.4	61.0	0.8	25.5	14.0	37.0	5.6
2016/17	27.0	2.7	72.5	0.5	27.8	17.0	40.0	10.8
2017/18	27.3	3.1	85.0	0.4	38.5	21.5	45.0	12.7

Wheat Supply and Disappearance: Selected Exporters (Continued)

Million Metric Tons/Hectares

Country Mktg Year	Area Harvested	Yield	Production	MY Imports	MY Exports	Feed and Residual	Total Consumption	Ending Stocks
Ukraine								
2013/14	6.6	3.4	22.3	0.1	9.8	3.4	11.5	3.7
2014/15	6.3	3.9	24.8	0.0	11.3	4.0	11.5	5.7
2015/16	7.1	3.8	27.3	0.0	17.4	5.1	12.2	3.3
2016/17	6.5	4.1	26.8	0.0	18.1	3.6	10.3	1.8
2017/18	6.6	4.1	27.0	0.0	17.2	3.5	9.9	1.7
Total Wheat Competitors								
2013/14	95.4	3.2	306.2	5.5	112.6	74.8	192.1	38.3
2014/15	95.4	3.4	320.8	7.7	121.1	82.1	201.1	44.5
2015/16	95.9	3.4	323.7	8.5	133.1	86.9	206.7	37.0
2016/17	99.3	3.4	340.0	6.6	137.3	88.1	208.1	38.2
2017/18	99.1	3.5	347.9	6.6	139.0	92.6	213.4	40.3

Corn Supply and Disappearance: Selected Exporters
Million Metric Tons/Hectares

Country Mktg Year	Area Harvested	Yield	Production	MY Imports	MY Exports	Feed and Residual	Total Consumption	Ending Stocks
Argentina								
2009/10	3.0	8.3	25.0	0.0	16.5	5.0	6.9	2.5
2010/11	3.8	6.7	25.2	0.0	16.3	5.3	7.3	4.0
2011/12	3.6	5.8	21.0	0.0	17.1	4.8	7.0	0.9
2012/13	4.0	6.8	27.0	0.0	18.7	5.3	7.9	1.3
2013/14	3.4	7.6	26.0	0.0	17.1	5.8	8.8	1.4
2014/15	3.5	8.5	29.8	0.0	19.0	6.0	9.3	2.9
2015/16	3.7	8.0	29.5	0.0	21.6	6.0	9.3	1.5
2016/17	4.9	8.4	41.0	0.0	26.0	7.5	11.2	5.3
2017/18	5.0	6.6	33.0	0.0	24.0	6.5	10.3	4.0
Brazil								
2009/10	12.9	4.3	56.1	0.4	11.6	41.5	48.5	6.5
2010/11	13.8	4.2	57.4	0.8	8.4	43.0	50.0	6.3
2011/12	15.2	4.8	73.0	0.8	24.3	44.0	51.5	4.2
2012/13	15.8	5.2	81.5	0.9	24.9	44.5	52.5	9.2
2013/14	15.8	5.1	80.0	0.8	21.0	46.0	55.0	14.0
2014/15	15.8	5.4	85.0	0.3	34.5	48.0	57.0	7.8
2015/16	16.0	4.2	67.0	3.4	14.0	49.0	57.5	6.8
2016/17	17.6	5.6	98.5	0.9	31.6	51.0	60.5	14.0
2017/18	17.1	5.4	92.0	0.4	33.0	53.0	62.5	10.9
China								
2009/10	31.2	5.3	164.0	1.3	0.2	118.0	165.0	51.3
2010/11	32.5	5.5	177.2	1.0	0.1	128.0	180.0	49.4
2011/12	33.5	5.7	192.8	5.2	0.1	131.0	188.0	59.3
2012/13	35.0	5.9	205.6	2.7	0.1	144.0	200.0	67.6
2013/14	36.3	6.0	218.5	3.3	0.0	150.0	208.0	81.3
2014/15	37.1	5.8	215.6	5.5	0.0	140.0	202.0	100.5
2015/16	38.1	5.9	224.6	3.2	0.0	153.5	217.5	110.8
2016/17	36.8	6.0	219.6	2.5	0.1	162.0	232.0	100.7
2017/18	35.4	6.1	215.9	4.0	0.1	167.0	241.0	79.6
South Africa								
2009/10	3.3	4.1	13.4	0.0	2.1	4.9	10.6	2.8
2010/11	2.9	3.8	10.9	0.4	2.4	5.0	10.7	1.0
2011/12	3.1	4.1	12.8	0.0	1.8	5.0	10.7	1.3
2012/13	3.2	3.8	12.4	0.1	2.1	5.1	11.0	0.7
2013/14	3.1	4.9	14.9	0.1	2.0	5.5	11.5	2.2
2014/15	3.0	3.5	10.6	2.0	0.7	6.2	11.7	2.4

Corn Supply and Disappearance: Selected Exporters (Continued)

Million Metric Tons/Hectares

Country Mktg Year	Area Harvested	Yield	Production	MY Imports	MY Exports	Feed and Residual	Total Consumption	Ending Stocks
2015/16	2.2	3.7	8.2	2.2	0.8	5.7	11.0	1.1
2016/17	3.0	5.9	17.6	0.0	2.2	7.1	13.1	3.3
2017/18	2.7	4.9	13.2	0.0	1.7	6.3	12.2	2.6
Total Corn Competitors								
2009/10	50.4	5.1	258.5	1.7	30.3	169.4	231.0	63.1
2010/11	52.9	5.1	270.8	2.2	27.3	181.3	248.0	60.8
2011/12	55.5	5.4	299.5	6.0	43.4	184.8	257.2	65.7
2012/13	58.1	5.6	326.5	3.7	45.8	198.9	271.4	78.7
2013/14	58.6	5.8	339.4	4.1	40.0	207.3	283.3	98.9
2014/15	59.4	5.7	341.0	7.8	54.1	200.2	280.0	113.7
2015/16	60.0	5.5	329.3	8.8	36.5	214.2	295.3	120.1
2016/17	62.3	6.0	376.6	3.3	59.9	227.6	316.8	123.3
2017/18	60.2	5.9	354.1	4.4	58.8	232.8	326.0	97.1

Barley Supply and Disappearance: Selected Exporters
Million Metric Tons/Hectares

Country Mktg Year	Area Harvested	Yield	Production	MY Imports	MY Exports	Feed and Residual	Total Consumption	Ending Stocks
Australia								
2009/10	4.4	1.8	7.9	0.0	3.9	3.3	4.5	1.9
2010/11	3.7	2.2	8.0	0.0	4.7	3.0	4.2	1.0
2011/12	3.7	2.2	8.2	0.0	5.4	2.1	3.3	0.5
2012/13	3.6	2.1	7.5	0.0	4.5	1.8	3.0	0.5
2013/14	3.8	2.4	9.2	0.0	6.2	1.5	2.8	0.7
2014/15	4.1	2.1	8.6	0.0	5.2	1.7	3.0	1.1
2015/16	4.1	2.2	9.0	0.0	5.7	2.0	3.3	1.1
2016/17	4.6	2.8	12.9	0.0	9.2	2.2	3.5	1.3
2017/18	3.9	2.1	8.0	0.0	5.8	1.5	2.8	0.7
Canada								
2009/10	2.9	3.3	9.5	0.0	1.3	7.5	8.7	2.5
2010/11	2.4	3.2	7.6	0.0	1.2	6.3	7.5	1.5
2011/12	2.4	3.3	7.9	0.0	1.3	5.7	6.9	1.2
2012/13	2.8	2.9	8.0	0.0	1.4	5.7	6.8	1.0
2013/14	2.7	3.9	10.2	0.0	1.6	6.5	7.7	2.0
2014/15	2.1	3.3	7.1	0.1	1.5	5.3	6.5	1.2
2015/16	2.4	3.5	8.2	0.2	1.2	5.8	7.0	1.4
2016/17	2.2	4.0	8.8	0.1	1.5	5.5	6.8	2.0
2017/18	2.1	3.8	7.9	0.1	1.5	5.8	7.0	1.5
European Union								
2009/10	14.0	4.5	62.4	0.1	1.1	41.7	56.8	15.6
2010/11	12.5	4.3	53.7	0.2	4.9	41.3	56.6	7.9
2011/12	11.9	4.3	51.9	0.5	3.0	35.8	51.2	6.1
2012/13	12.5	4.4	54.9	0.1	5.0	35.5	51.0	5.0
2013/14	12.4	4.8	59.7	0.0	5.7	38.0	53.4	5.6
2014/15	12.4	4.9	60.6	0.1	9.5	35.7	50.9	5.8
2015/16	12.2	5.1	62.1	0.3	10.8	36.5	51.4	6.1
2016/17	12.3	4.9	59.9	0.4	5.7	40.1	55.0	5.6
2017/18	12.3	4.8	58.7	0.5	6.2	38.6	53.5	5.2

Sorghum Supply and Disappearance: Selected Exporters

Million Metric Tons/Hectares

Country Mktg Year	Area Harvested	Yield	Production	MY Imports	MY Exports	Feed and Residual	Total Consumption	Ending Stocks
Argentina								
2009/10	0.8	4.8	3.6	0.0	1.8	1.7	1.9	0.2
2010/11	1.0	4.4	4.4	0.0	1.7	1.7	1.9	0.9
2011/12	1.0	4.2	4.2	0.0	3.1	1.7	1.9	0.2
2012/13	1.1	4.5	4.7	0.0	1.8	2.0	2.3	0.8
2013/14	1.0	4.4	4.4	0.0	1.3	2.3	2.7	1.2
2014/15	0.8	4.5	3.5	0.0	0.9	2.4	2.8	1.0
2015/16	0.8	4.5	3.4	0.0	0.5	2.5	2.9	1.0
2016/17	0.7	4.9	3.4	0.0	0.6	2.5	2.9	0.9
2017/18	0.8	3.9	3.0	0.0	0.5	2.3	2.7	0.7
Australia								
2009/10	0.5	3.0	1.5	0.0	0.3	1.2	1.2	0.7
2010/11	0.6	3.1	1.9	0.0	0.9	1.4	1.4	0.4
2011/12	0.7	3.4	2.2	0.0	1.3	1.1	1.1	0.2
2012/13	0.6	3.4	2.2	0.0	1.2	1.1	1.1	0.2
2013/14	0.5	2.4	1.3	0.0	0.4	0.9	0.9	0.2
2014/15	0.7	3.0	2.2	0.0	1.6	0.5	0.5	0.3
2015/16	0.5	3.4	1.8	0.0	0.9	0.9	0.9	0.2
2016/17	0.4	2.7	1.0	0.0	0.3	0.5	0.7	0.3
2017/18	0.5	2.6	1.3	0.0	0.5	0.6	0.8	0.3

U.S. Grains Supply and Distribution: Wheat, Corn, Sorghum, Barley, Oats, Rye, and Rice

Thousand Metric Tons/Hectares

	Area Harvested	Yield	Rough Production	Production	Imports	TY Imports	Exports	TY Exports	Feed Dom. Consumption	Domestic Consumption	Ending Stocks
Wheat											
2015/16	19,149	3	nr	56,117	3,068	3,054	21,168	21,811	4,065	31,942	26,552
2016/17	17,746	4	nr	62,833	3,215	3,297	28,716	29,488	4,259	31,753	32,131
2017/18	15,211	3	nr	47,371	4,218	4,200	25,174	24,500	1,905	29,584	28,962
Corn											
2015/16	32,680	11	nr	345,506	1,716	1,782	48,288	51,156	129,909	298,785	44,123
2016/17	35,106	11	nr	384,778	1,448	1,450	58,242	55,535	139,007	313,854	58,253
2017/18	33,469	11	nr	370,960	1,270	1,300	56,518	56,000	139,706	318,530	55,435
Sorghum											
2015/16	3,177	5	nr	15,158	117	98	8,626	7,871	2,707	6,187	930
2016/17	2,494	5	nr	12,199	44	44	6,111	6,090	3,302	6,212	850
2017/18	2,042	5	nr	9,242	51	50	6,223	6,300	2,032	3,176	744
Barley											
2015/16	1,278	4	nr	4,750	405	352	235	161	966	4,408	2,223
2016/17	1,038	4	nr	4,353	210	217	95	125	847	4,375	2,316
2017/18	791	4	nr	3,090	218	230	131	130	544	4,072	1,421
Oats											
2015/16	516	3	nr	1,300	1,475	1,532	29	36	1,591	2,702	824
2016/17	397	2	nr	940	1,556	1,539	50	44	1,434	2,539	731
2017/18	324	2	nr	717	1,500	1,500	29	30	1,471	2,604	315
Rye											
2015/16	148	2	nr	295	222	217	5	6	195	515	12
2016/17	168	2	nr	342	167	172	4	4	159	499	18
2017/18	116	2	nr	246	204	200	5	5	99	448	15
Rice, Milled											
2015/16	1,046	8	8,761	6,133	766	768	3,396	3,373	nr	3,580	1,475
2016/17	1,253	8	10,167	7,117	745	787	3,704	3,384	nr	4,171	1,462
2017/18	961	8	8,084	5,659	794	775	3,048	3,150	nr	3,811	1,056

Notes: Wheat Trade Year (TY) statistics are on July/June years. Barley, corn, sorghum, rye and oats Trade Year (TY) statistics are on Oct/Sept years. Rice Trade Year (TY) statistics are for the subsequent calendar year; 'Imports' and 'Exports' columns contain data on the local marketing year: wheat, barley, oats and rye are June/May; corn and sorghum are Sept/Aug; rice is Aug/July.

Total Wheat and Coarse Grains: Supply and Demand

Millions of Metric Tons/Hectares

	Area Harvested	Yield	Production	TY Exports	Feed Dom.	Domestic Consumption	Ending Stocks
Wheat and Coarse Grains							
1988/89	541.8	2.2	1,218.0	203.3	619.4	1,301.7	338.8
1989/90	548.0	2.4	1,327.1	208.9	644.3	1,345.9	320.0
1990/91	545.5	2.6	1,417.5	190.1	669.8	1,369.5	368.0
1991/92	543.2	2.5	1,355.5	207.5	653.4	1,365.9	357.6
1992/93	545.8	2.6	1,431.7	205.2	664.2	1,388.4	398.1
1993/94	535.9	2.5	1,356.4	188.2	657.1	1,389.1	365.4
1994/95	534.1	2.6	1,393.0	200.1	670.6	1,395.9	362.4
1995/96	527.2	2.5	1,338.9	187.5	641.8	1,381.8	319.5
1996/97	545.7	2.7	1,490.2	198.3	674.8	1,441.9	367.9
1997/98	535.1	2.8	1,490.8	190.4	685.8	1,443.5	415.1
1998/99	520.3	2.8	1,481.4	198.7	685.4	1,448.6	447.8
1999/00	506.1	2.9	1,465.5	214.0	690.3	1,469.9	442.9
2000/01	509.1	2.8	1,446.2	204.8	699.1	1,470.9	418.1
2001/02	511.5	2.9	1,479.8	208.3	713.4	1,495.4	402.5
2002/03	504.1	2.9	1,444.9	209.2	711.4	1,506.0	341.4
2003/04	511.1	2.9	1,473.3	205.8	718.0	1,535.7	279.0
2004/05	514.7	3.2	1,642.7	214.4	756.2	1,586.1	335.6
2005/06	520.4	3.1	1,598.4	222.5	757.9	1,616.1	318.0
2006/07	518.2	3.1	1,585.1	229.9	749.5	1,630.5	272.6
2007/08	535.0	3.2	1,694.9	244.7	764.2	1,678.4	289.1
2008/09	539.1	3.3	1,795.8	253.5	773.9	1,724.6	360.3
2009/10	531.7	3.4	1,802.5	254.1	783.9	1,766.5	396.3
2010/11	522.5	3.3	1,748.6	249.8	775.4	1,785.4	359.5
2011/12	536.4	3.5	1,854.3	287.0	809.3	1,852.8	361.0
2012/13	532.5	3.4	1,793.9	279.6	808.7	1,812.1	342.8
2013/14	545.5	3.7	1,998.5	327.8	864.7	1,934.4	406.9
2014/15	547.6	3.7	2,040.6	335.8	887.4	1,981.7	465.9
2015/16	546.1	3.7	1,994.4	356.9	903.5	1,966.0	494.2
2016/17	547.1	3.9	2,115.6	363.8	946.2	2,091.6	518.2
2017/18	538.7	3.9	2,074.8	372.8	959.8	2,096.9	496.1

Notes: Wheat and coarse grains trade data are on July/June years through 1975/76. From 1976/77 to the present, coarse grains data are on an Oct/Sept trade year.

World Wheat and Coarse Grains: Supply and Demand

Millions of Metric Tons/Hectares

	Area Harvested	Yield	Production	TY Exports	Feed Dom.	Domestic Consumpti	Ending Stocks
Wheat							
1995/96	216.7	2.5	537.5	99.2	96.9	545.6	155.8
1996/97	227.1	2.6	581.3	104.0	101.4	572.7	164.4
1997/98	226.4	2.7	610.2	104.5	106.2	576.7	197.9
1998/99	219.2	2.7	590.5	102.0	109.4	579.1	209.3
1999/00	212.6	2.8	587.5	111.9	104.6	587.7	209.1
2000/01	215.3	2.7	582.8	102.0	109.8	585.8	206.1
2001/02	214.2	2.7	583.9	107.9	111.9	586.6	203.3
2002/03	213.4	2.7	569.7	106.5	116.1	603.9	169.1
2003/04	207.9	2.7	555.7	103.5	101.7	588.9	135.9
2004/05	215.7	2.9	626.7	113.2	110.7	606.2	156.4
2005/06	217.5	2.8	618.8	114.1	117.7	622.0	153.3
2006/07	212.3	2.8	596.7	115.3	113.1	616.5	133.5
2007/08	216.9	2.8	611.9	116.0	105.0	617.2	128.2
2008/09	224.1	3.1	684.2	143.2	123.9	643.0	169.4
2009/10	225.6	3.0	687.3	135.3	122.2	652.9	203.8
2010/11	216.9	3.0	649.6	134.0	116.6	654.2	199.2
2011/12	221.0	3.2	697.3	153.6	148.6	697.3	199.2
2012/13	215.9	3.1	658.8	147.2	138.3	679.7	178.2
2013/14	219.7	3.3	715.1	162.5	126.7	698.1	195.3
2014/15	221.7	3.3	728.2	161.9	131.8	704.7	218.7
2015/16	223.7	3.3	735.2	172.0	136.5	711.2	242.7
2016/17	221.8	3.4	750.7	182.2	147.2	738.8	254.6
2017/18	219.7	3.5	759.8	184.3	145.7	743.1	271.2
Coarse Grains							
1995/96	310.5	2.6	801.4	88.3	544.9	836.2	163.7
1996/97	318.6	2.9	909.0	94.3	573.4	869.2	203.5
1997/98	308.8	2.9	880.6	85.8	579.6	866.9	217.2
1998/99	301.2	3.0	890.9	96.7	575.9	869.5	238.5
1999/00	293.4	3.0	878.0	102.1	585.7	882.2	233.8
2000/01	293.8	2.9	863.4	102.8	589.2	885.1	212.1
2001/02	297.3	3.0	895.9	100.4	601.4	908.8	199.2
2002/03	290.7	3.0	875.2	102.7	595.2	902.2	172.3
2003/04	303.2	3.0	917.7	102.3	616.3	946.8	143.1
2004/05	299.0	3.4	1,016.0	101.2	645.5	979.8	179.2
2005/06	302.9	3.2	979.6	108.4	640.2	994.1	164.7
2006/07	305.9	3.2	988.4	114.5	636.4	1,014.0	139.1
2007/08	318.1	3.4	1,083.0	128.7	659.2	1,061.3	160.9
2008/09	314.9	3.5	1,111.6	110.4	650.1	1,081.6	190.8
2009/10	306.1	3.6	1,115.2	118.8	661.8	1,113.6	192.5
2010/11	305.6	3.6	1,099.0	115.8	658.8	1,131.2	160.3
2011/12	315.4	3.7	1,157.0	133.3	660.7	1,155.5	161.8
2012/13	316.6	3.6	1,135.1	132.4	670.3	1,132.3	164.6
2013/14	325.9	3.9	1,283.4	165.3	738.0	1,236.3	211.6
2014/15	325.9	4.0	1,312.5	173.9	755.7	1,276.9	247.2
2015/16	322.5	3.9	1,259.2	184.9	767.0	1,254.9	251.5
2016/17	325.3	4.2	1,364.9	181.5	799.0	1,352.8	263.6
2017/18	319.0	4.1	1,315.0	188.5	814.1	1,353.8	224.9

Notes: Wheat and coarse grains trade data are on July/June years through 1975/76. From 1976/77 to the present, coarse grains data are on an Oct/Sept trade year.

World Corn and Barley: Supply and Demand

Millions of Metric Tons/Hectares

	Area Harvested	Yield	Production	TY Exports	Feed Dom.	Domestic Consumption	Ending Stocks
Corn							
1995/96	135.0	3.8	516.7	64.8	365.2	536.8	133.3
1996/97	141.5	4.2	592.9	66.6	387.8	559.9	166.3
1997/98	136.2	4.2	574.2	63.1	400.6	573.3	167.2
1998/99	138.9	4.4	605.8	68.7	404.3	581.7	191.4
1999/00	138.8	4.4	608.1	72.0	422.4	605.0	194.4
2000/01	137.0	4.3	591.5	75.9	427.3	610.8	175.1
2001/02	137.1	4.4	601.8	72.7	436.3	625.5	151.4
2002/03	137.7	4.4	604.1	76.8	433.3	628.6	126.9
2003/04	141.6	4.4	627.8	79.0	445.8	650.0	104.7
2004/05	145.3	4.9	716.9	76.0	476.0	690.6	131.1
2005/06	145.1	4.8	700.2	82.5	479.6	707.8	123.4
2006/07	149.6	4.8	715.6	91.3	480.0	730.2	108.8
2007/08	160.2	5.0	795.7	98.2	500.9	776.8	127.7
2008/09	158.0	5.1	800.2	83.6	482.8	784.7	143.2
2009/10	157.0	5.3	824.8	92.7	493.8	827.2	140.9
2010/11	164.0	5.1	836.3	91.7	506.1	854.6	122.6
2011/12	172.7	5.2	891.5	103.7	509.8	885.8	128.2
2012/13	179.6	4.9	874.3	100.7	521.3	869.5	132.9
2013/14	182.8	5.4	996.2	130.8	574.9	954.8	174.3
2014/15	182.2	5.6	1,023.4	128.4	587.3	987.9	209.7
2015/16	180.6	5.4	972.2	144.9	601.6	968.0	213.9
2016/17	185.9	5.8	1,075.5	141.6	632.1	1,058.5	230.9
2017/18	183.2	5.7	1,036.1	150.3	650.0	1,069.2	197.8
Barley							
1995/96	66.4	2.1	141.2	13.4	107.8	150.7	20.5
1996/97	64.2	2.4	153.1	17.9	106.3	149.5	24.1
1997/98	63.8	2.4	153.9	12.8	104.1	145.8	32.2
1998/99	56.7	2.4	136.0	17.8	99.5	139.2	29.0
1999/00	52.1	2.4	127.4	17.8	94.0	132.5	23.9
2000/01	53.0	2.5	133.0	16.3	94.6	134.3	22.6
2001/02	55.7	2.6	143.5	17.2	95.5	136.9	29.2
2002/03	54.7	2.5	134.2	16.3	94.7	135.8	27.6
2003/04	58.4	2.4	142.9	14.8	103.3	147.0	23.5
2004/05	57.4	2.7	152.3	17.0	100.2	142.7	33.1
2005/06	55.2	2.5	136.2	17.4	97.4	141.0	28.3
2006/07	56.3	2.4	136.7	14.6	98.4	143.5	21.5
2007/08	55.7	2.4	132.7	18.5	91.0	133.6	20.5
2008/09	55.0	2.8	154.9	18.2	99.7	143.1	32.3
2009/10	54.1	2.8	150.9	17.3	102.3	146.1	37.2
2010/11	47.1	2.6	123.0	15.2	91.0	135.8	24.3
2011/12	49.2	2.7	133.5	21.4	92.2	135.3	22.5
2012/13	50.2	2.6	129.0	22.2	87.6	129.9	21.6
2013/14	50.6	2.9	144.3	23.9	97.3	140.9	25.0
2014/15	49.7	2.9	141.7	30.1	98.3	142.3	24.4
2015/16	50.3	3.0	149.6	27.6	100.7	147.6	26.5
2016/17	48.5	3.0	146.0	29.6	104.1	150.1	22.3
2017/18	47.4	3.0	141.9	27.8	102.3	146.1	18.1

Notes: Coarse grains trade data are on July/June years through 1975/76. From 1976/77 to the present, coarse grains data are on an Oct/Sept trade year.

World Rice: Supply and Demand

Millions of Metric Tons/Hectares

	Area Harvested	Yield	Rough Production	Production	TY Exports	Domestic Consumption	Ending Stocks
Rice, Milled							
1988/89	146.6	3.3	490.8	332.1	14.0	325.7	111.6
1989/90	147.8	3.5	510.4	345.3	11.7	336.4	120.6
1990/91	147.0	3.5	519.5	351.4	12.3	345.4	126.6
1991/92	147.6	3.5	522.9	353.3	14.4	353.3	126.7
1992/93	146.4	3.6	524.0	353.9	14.9	357.4	123.1
1993/94	145.3	3.6	526.0	354.7	16.6	358.9	118.9
1994/95	147.3	3.7	539.9	364.1	20.8	365.5	117.6
1995/96	148.3	3.7	547.3	368.8	19.7	368.2	118.1
1996/97	150.2	3.8	563.8	380.4	18.9	378.2	120.3
1997/98	151.7	3.8	575.2	387.4	27.6	379.9	127.7
1998/99	153.3	3.8	586.9	394.9	24.8	388.6	134.0
1999/00	155.8	3.9	608.8	409.3	22.8	400.2	143.1
2000/01	152.8	3.9	594.0	399.2	24.3	395.6	146.7
2001/02	151.6	3.9	594.2	399.4	27.9	413.1	132.9
2002/03	147.6	3.8	562.9	378.1	27.5	408.0	103.0
2003/04	149.5	3.9	585.3	392.5	27.3	413.8	81.6
2004/05	151.4	3.9	596.4	400.8	28.9	408.5	74.0
2005/06	154.2	4.0	622.3	417.9	29.0	415.4	76.5
2006/07	154.6	4.0	625.1	420.1	31.8	421.2	75.4
2007/08	154.9	4.2	643.6	433.6	29.6	428.1	80.9
2008/09	158.5	4.2	669.5	449.9	29.4	437.6	93.2
2009/10	155.8	4.2	655.2	440.0	31.8	438.0	95.2
2010/11	158.3	4.2	671.8	450.2	36.5	445.5	99.9
2011/12	159.8	4.4	697.4	467.7	40.0	458.5	109.2
2012/13	159.6	4.4	706.5	473.8	39.5	464.1	118.8
2013/14	161.8	4.4	713.9	478.7	44.1	475.5	122.0
2014/15	161.0	4.4	715.0	479.5	42.6	473.7	127.9
2015/16	159.3	4.4	705.1	472.9	40.2	468.1	132.7
2016/17	160.8	4.5	725.5	486.2	48.0	481.8	137.1
2017/18	161.5	4.5	727.3	487.5	48.6	480.1	144.4

Notes: Stocks, exports and consumption are expressed on a milled basis in marketing years.

ENDNOTES TO GRAIN: WORLD MARKETS AND TRADE

REGIONAL TABLES

North America: Canada, Mexico, the United States.

Central America: Belize, Costa Rica, El Salvador, Guatemala, Honduras, Nicaragua, Panama.

Caribbean: Anguilla, Antigua and Barbuda, Aruba, Bahamas, Barbados, Bermuda, British Virgin Islands, Cayman Islands, Cuba, Dominica, Dominican Republic, French West Indies, Grenada, Guadeloupe, Haiti, Jamaica and Dep, Leeward-Windward Islands, Martinique, Montserrat, Netherlands Antilles, Puerto Rico, Kitts and Nevis, St. Lucia, St. Vincent and the Grenadines, Trinidad and Tobago, Turks and Caicos Islands, Virgin Islands of the U.S.

South America: Argentina, Bolivia, Brazil, Chile, Colombia, Ecuador, Falkland Islands (Islas Malvinas), French Guiana, Guyana, Paraguay, Peru, Suriname, Uruguay, Venezuela.

EU: Austria, Belgium/Luxembourg, Bulgaria, Croatia, Cyprus, Czech Republic, Denmark, Estonia, Finland, France, Germany, Greece, Hungary, Ireland, Italy, Latvia, Lithuania, Malta, Netherlands, Poland, Portugal, Romania, Slovakia, Slovenia, Spain, Sweden, United Kingdom.

Other Europe: Albania, Azores, Bosnia and Herzegovina, Former Yugoslavia, Gibraltar, Iceland, Macedonia, Montenegro, Norway, Serbia, Switzerland.

Former Soviet Union: Armenia, Azerbaijan, Belarus, Georgia, Kazakhstan, Kyrgyzstan, Moldova, Russia, Tajikistan, Turkmenistan, Ukraine, Uzbekistan.

Middle East: Bahrain, Iran, Iraq, Israel, Jordan, Kuwait, Lebanon, Oman, Qatar, Saudi Arabia, Syria, Turkey, United Arab Emirates, Yemen.

North Africa: Algeria, Egypt, Libya, Morocco, Tunisia.

Sub-Saharan Africa: all African countries except North Africa.

East Asia: China, Hong Kong, Japan, South Korea, North Korea, Macau, Mongolia, Taiwan.

South Asia: Afghanistan, Bangladesh, Bhutan, India, Nepal, Pakistan, Sri Lanka, Maldives.

Southeast Asia: Brunei, Burma, Cambodia, Indonesia, Laos, Malaysia, Philippines, Singapore, Thailand, Vietnam.

Oceania: Australia, Fiji, New Zealand, Papua New Guinea.

OTHER NOTES

Local Marketing Years (LMY): LMY refers to the 12-month period at the onset of the main harvest, when the crop is marketed (i.e., consumed, traded, or stored). The year first listed begins a country's LMY for that commodity (2016/17 starts in 2016); except for summer grains in certain Southern Hemisphere countries and for rice in selected countries, where the second year begins the LMY (2016/17 starts in 2017). Key exporter LMY's are:

Wheat	Corn	Barley	Sorghum
Argentina (Dec/Nov)	Argentina (Mar/Feb)	Australia (Nov/Oct)	Argentina (Mar/Feb)
Australia (Oct/Sep)	Brazil (Mar/Feb)	Canada (Aug/Jul)	Australia (Mar/Feb)
Canada (Aug/Jul)	China (Oct/Sep)	European Union (Jul/Jun)	United States (Sep/Aug)
China (Jul/Jun)	South Africa (May/Apr)	Russia (Jul/Jun)	
European Union (Jul/Jun)	United States (Sep/Aug)	Ukraine (Jul/Jun)	
India (Apr/Mar)		United States (Jun/May)	
Kazakhstan (Jul/Jun)			
Russia (Jul/Jun)			
Turkey (Jun/May)			
Ukraine (Jul/Jun)			
United States (Jun/May)			

For a complete list of local marketing years, please see the FAS website (<http://www.fas.usda.gov/psdonline/psdAvailability.aspx>).

Stocks: Unless otherwise stated, stock data are based on an aggregate of differing local marketing years and should not be construed as representing world stock levels at a fixed point in time.

Consumption: World totals for consumption reflect total utilization, including food, seed, industrial, feed, and waste; as well as differences in local marketing year imports and local marketing year exports. Consumption statistics for regions and individual countries, however, reflect food, seed, industrial, feed, and waste only.

Trade: All PSD tables are balanced on the different local marketing years. All trade tables contain Trade Year (TY) data which puts all countries on a uniform, 12-month period for analytical comparisons: wheat is July/June; coarse grains, corn, barley, sorghum, oats, and rye are Oct/Sept; and rice is calendar year.

EU Consolidation: The trade figures starting from 1999/00 represent the European Union (Croatia plus the former EU-27) and exclude all intra-trade. For the years 1960/61 through 1998/99, figures are the EU-15 and also exclude all intra-trade. EU-15 member states' data for grains are no longer maintained in the official USDA database. Data for the individual NMS-10, plus Bulgaria, Romania, and Croatia, exists only prior to 1999/00.

Statistics: (1) Wheat trade statistics include wheat, flour, and selected pasta products on a grain equivalent basis. (2) Rice trade statistics include rough, brown, milled, and broken on a milled equivalent basis. (3) Coarse grains statistics include corn, barley, sorghum, oats, rye, millet, and mixed grains but exclude trade in barley malt, millet, and mixed grains.

Unaccounted: This term includes grain in transit, reporting discrepancies in some countries, and trade to countries outside the USDA database.

The Global Commodity Analysis Division, Office of Global Analysis, Foreign Agricultural Service, USDA, Washington, DC 20250, prepared this circular. Information is gathered from official statistics of foreign governments and other foreign source materials, reports of U.S. agricultural attachés and Foreign Service officers, office research, and related information. Further information may be obtained by writing the Division or telephoning (202) 720-3448.

Note: The previous report in this series was [Grain: World Markets and Trade](#) March 2018. For further details on world grain production, please see [World Agricultural Production](#) April 2018.

This circular is available in its entirety on the Internet via the Foreign Agricultural Service Home Page. The address is: <http://www.fas.usda.gov>

Questions may be directed to the following staff:

Andrew Sowell	(202) 720-0262	Andrew.Sowell@fas.usda.gov	Wheat
Shelbi Knisley	(202) 690-2361	Shelbi.Knisley@fas.usda.gov	Wheat
Rachel Trego	(202) 720-1073	Rachel.Trego@fas.usda.gov	Rice/Wheat
Eric Mullis	(202) 690-0752	Eric.Mullis@fas.usda.gov	Rice
Yoonhee Macke	(202) 690-4199	Yoonhee.Macke@fas.usda.gov	Coarse Grains
Graham Soley	(202) 772-4235	Graham.Soley@fas.usda.gov	Coarse Grains
Olutayo Akingbe	(202) 690-1624	Olutayo.Akingbe@fas.usda.gov	Coarse Grains