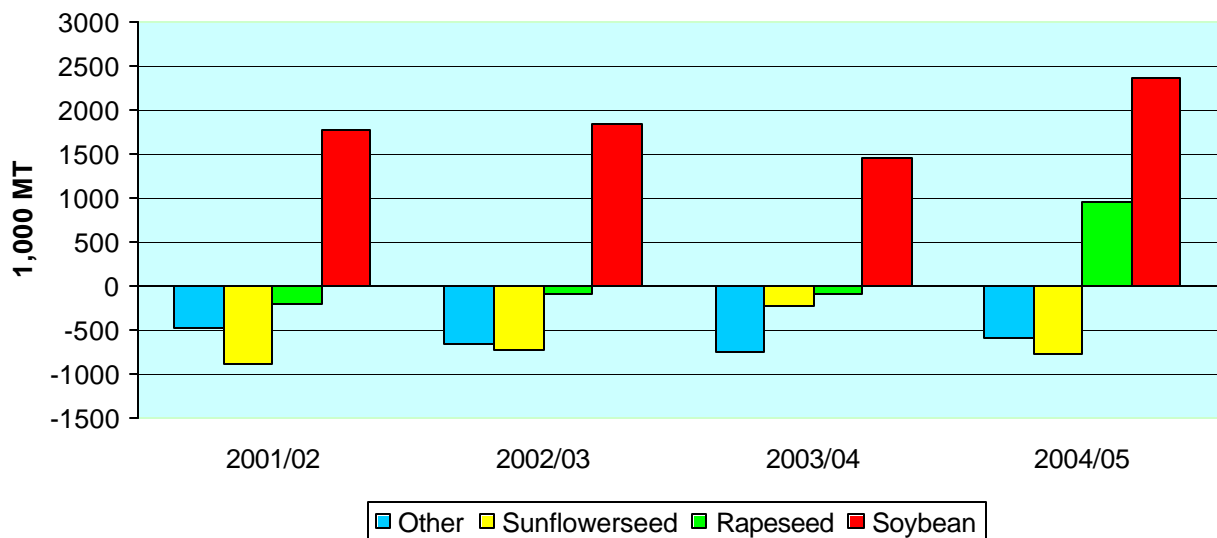




Oilseeds: World Markets and Trade

EU Soybean Meal and Rapeseed Meal Consumption Expands in 2004/05

Change in Meal Consumption from 2000/01



An upturn in the use of domestically produced rapeseed meal helped push the combined share of rapeseed and soybean meal consumption higher in 2004/05. The dramatic rise in rapeseed production in 2004 is expected to lead to a 17-percent increase in consumption compared to the previous 4-year average. Production rose following a drought in 2003, spurred on by an increasing interest in bio-diesel production. Soybean meal consumption is projected to be nearly 8-percent higher than in 2000/01. This growth in consumption is sourced from imported soybean meal as domestic soybean production declined 19 percent over the period, while soybean imports are down 10 percent to a projected 15.7 million tons in 2004/05. Since 2000/01, the combined share of rapeseed and soybean meal consumption has risen from 79 percent to a projected 82 percent in 2004/05.

Consumption of other protein meals has declined since 2000/01 with the largest declines noted for sunflowerseed and copra meal. Peanut meal consumption has fallen 75 percent for the period while reduced cottonseed meal and fishmeal consumption are also noted. The exception has been palm kernel meal which remains unchanged from 2000/01 levels.

List of Tables

	Key Oilseeds Forecast Changes from Last Month
Table 1:	Major Oilseeds: World Supply and Distribution
Table 2:	Major Protein Meals: World Supply and Distribution
Table 3:	Major Vegetable Oils: World Supply and Distribution
Table 4:	Major Oilseeds: Area, Yield, and Production by Main Producers
Table 5:	Soybeans: World Supply and Distribution
Table 6:	Soybean Meal: World Supply and Distribution
Table 7:	Soybean Oil: World Supply and Distribution
Table 8:	Soybeans and Products: World Trade
	Notes on World Supply/Demand Tables
Table 9:	Vegetable Oils Production, Consumption, and Imports For Selected Countries
Table 10:	United States: Oilseeds and Products Supply and Distribution Local Marketing Year
Table 11:	United States: Soybeans and Products Supply and Distribution Local Marketing Years
Table 12:	Brazil: Soybeans and Products Supply and Distribution Local Marketing Years
Table 13:	Argentina: Soybeans and Products Supply and Distribution Local Marketing Years
Table 14:	Argentina: Sunflowerseed and Products Supply and Distribution Local Marketing Years
Table 15:	European Union (25): Oilseeds and Products Supply and Distribution
Table 16:	Russia: Oilseeds and Products Supply and Distribution
Table 17:	China: Oilseeds and Products Supply and Distribution
Table 18:	India: Oilseeds and Products Supply and Distribution
Table 19:	Malaysia: Palm Oil Supply and Distribution
Table 20:	Oilseed Prices
Table 21:	Protein Meal Prices
Table 22:	Vegetable Oil Prices
Table 23:	GSM-102 Program Announcements and Sales Registrations
	Contact List

Key Oilseeds Forecast Changes From Last Month

(1000 MT)

	Year	Production	Imports	Exports	Consumption	Ending Stocks
Oilseed, Soybean						
Argentina	2004/05	0	0	0	-360	360
Brazil	2004/05	-1,500	0	0	-1,700	200
China, Peoples Republic	2004/05	0	500	0	500	0
EU-25	2004/05	2	-200	-21	-219	42
India	2004/05	-500		0	-498	-2
Japan	2004/05	0	-300		-268	-32
Mexico	2004/05	0	-300		-300	0
Uruguay	2004/05	-150		0	0	-150
World	2004/05	-2,143	-240	-21	-2,903	542
Meal, Soybean						
Argentina	2004/05	-363		-370	57	-50
Brazil	2004/05	-1,157	0	-1,156	0	-847
China, Peoples Republic	2004/05	390	0	0	390	0
EU-25	2004/05	-205	-2,250	92	-2,547	0
India	2004/05	-328		0	-328	0
Japan	2004/05	-175	0		-175	0
Mexico	2004/05	-307	0	0	-307	0
United States	2004/05	-182	0	0	-182	0
World	2004/05	-2,214	-2,211	-1,433	-2,941	-897
Oil, Soybean						
Brazil	2004/05	-277	0	-222	0	-55
World	2004/05	-438	46	-280	-22	-90
Oilseed, Rapeseed						
Canada	2004/05	0	0	-250	0	250
China, Peoples Republic	2004/05	0	-400	0	-400	
India	2004/05	500			464	36
World	2004/05	622	-400	-329	145	386
Oil, Rapeseed						
India	2004/05	160	0		165	-5
Meal, Rapeseed						
India	2004/05	245		0	245	
World	2004/05	143	20	1	162	-2
Oil, Sunflowerseed						
World	2004/05	-89	24	113	-177	-1
Oilseed, Peanut						
China, Peoples Republic	2004/05	-500	0	-100	-400	
Ghana	2004/05	215			215	
World	2004/05	-260	-1	-100	-161	0
Oil, Palm						
China, Peoples Republic	2004/05		200	0	200	
Malaysia	2004/05	500	0	400	100	0
World	2004/05	550	319	547	322	0
Oilseed, Cottonseed						
India	2004/05	340			340	0
World	2004/05	490	-45	113	375	-43

TABLE 1.
MAJOR OILSEEDS: WORLD SUPPLY AND DISTRIBUTION
(MILLION METRIC TONS)

	2000/01	2001/02	2002/03	PRELIM 2003/04	JANUARY 2004/05	FEBRUARY 2004/05
PRODUCTION						
SOYBEAN	175.93	185.12	197.12	189.81	230.77	228.63
COTTONSEED	33.51	36.61	32.87	35.56	43.58	44.07
PEANUT	31.41	33.88	30.54	32.45	34.74	34.48
SUNFLOWERSEED	23.18	21.38	23.95	26.50	25.40	25.35
RAPESEED	37.40	35.99	32.45	39.32	43.03	43.65
COPRA	5.76	5.20	5.11	5.33	5.51	5.48
PALM KERNEL	7.03	7.20	7.64	8.10	8.39	8.52
TOTAL	314.22	325.38	329.67	337.08	391.42	390.18
EXPORTS						
SOYBEAN	53.79	53.59	61.69	55.18	62.74	62.72
COTTONSEED	1.27	0.96	0.75	0.93	0.88	1.00
PEANUT	1.79	1.93	1.85	1.74	1.96	1.86
SUNFLOWERSEED	2.64	1.34	1.84	2.79	2.01	2.00
RAPESEED	7.18	4.73	4.12	5.41	6.24	5.91
COPRA	0.14	0.14	0.12	0.12	0.15	0.12
PALM KERNEL	0.05	0.08	0.07	0.06	0.06	0.06
TOTAL	66.86	62.76	70.43	66.23	74.04	73.66
IMPORTS						
SOYBEAN	53.04	54.41	62.67	54.03	62.22	61.98
COTTONSEED	1.25	1.21	0.83	0.83	0.91	0.86
PEANUT	1.61	1.76	1.58	1.42	1.57	1.57
SUNFLOWERSEED	2.24	1.22	1.71	2.63	1.74	1.64
RAPESEED	7.02	4.91	4.01	5.17	6.03	5.63
COPRA	0.16	0.11	0.08	0.09	0.10	0.10
PALM KERNEL	0.10	0.14	0.06	0.05	0.06	0.06
TOTAL	65.41	63.77	70.94	64.22	72.62	71.84
CRUSH						
SOYBEAN	146.85	158.13	164.89	164.28	178.72	176.03
COTTONSEED	24.46	26.66	24.60	26.28	31.87	31.97
PEANUT	14.36	16.09	14.20	15.54	16.23	16.08
SUNFLOWERSEED	20.81	18.47	20.13	22.75	21.89	21.70
RAPESEED	35.44	33.47	31.25	36.54	39.36	39.45
COPRA	5.74	5.12	5.02	5.22	5.42	5.41
PALM KERNEL	7.00	7.19	7.55	8.03	8.31	8.43
TOTAL	254.65	265.13	267.63	278.64	301.79	299.05
ENDING STOCKS						
SOYBEAN	31.86	33.19	40.65	38.86	60.81	61.35
COTTONSEED	0.55	0.59	0.41	0.55	0.68	0.63
PEANUT	0.83	1.00	0.56	0.69	0.76	0.76
SUNFLOWERSEED	0.83	0.75	1.29	1.47	1.18	1.30
RAPESEED	2.70	2.84	1.97	1.87	2.54	2.93
COPRA	0.03	0.03	0.04	0.08	0.08	0.08
PALM KERNEL	0.15	0.15	0.16	0.14	0.15	0.16
TOTAL	36.95	38.56	45.09	43.66	66.19	67.20

NOTE: TOTALS MAY NOT ADD DUE TO ROUNDING. FOR NOTES AND DESCRIPTION
OF AREAS DESIGNATED SEE PAGE FOLLOWING TABLE 8.

SOURCE: COUNSELOR AND ATTACHE REPORTS
OFFICIAL STATISTICS, USDA ESTIMATES
DATE: February 2005

FOREIGN AGRICULTURAL SERVICE
COTTON, OILSEEDS, TOBACCO
and SEEDS DIVISION

TABLE 2.
MAJOR PROTEIN MEALS: WORLD SUPPLY AND DISTRIBUTION
(MILLION METRIC TONS)

	2000/01	2001/02	2002/03	PRELIM 2003/04	JANUARY 2004/05	FEBRUARY 2004/05
PRODUCTION						
SOYBEAN	116.43	125.15	129.95	129.42	141.08	138.86
COTTONSEED	11.22	12.10	11.15	11.98	14.37	14.41
RAPESEED	21.15	20.02	18.72	21.90	23.45	23.59
SUNFLOWERSEED	9.58	8.40	8.98	10.16	9.66	9.60
FISH	5.93	5.78	4.87	5.40	5.19	5.19
PEANUT	5.40	6.06	5.33	5.85	6.10	6.05
COPRA	1.83	1.64	1.60	1.67	1.73	1.73
PALM KERNEL	3.67	3.75	3.96	4.19	4.35	4.41
TOTAL	175.21	182.90	184.55	190.57	205.91	203.84
EXPORTS						
SOYBEAN	35.50	40.46	42.24	44.67	48.33	46.90
COTTONSEED	0.63	0.58	0.40	0.46	0.58	0.60
RAPESEED	1.83	1.49	1.59	2.38	2.01	2.02
SUNFLOWERSEED	2.36	2.15	2.40	2.93	2.76	2.77
FISH	3.43	3.16	2.86	3.10	2.89	2.89
PEANUT	0.31	0.36	0.11	0.37	0.32	0.31
COPRA	1.16	0.79	0.84	0.86	0.86	0.87
PALM KERNEL	3.04	2.83	3.08	3.18	3.25	3.31
TOTAL	48.26	51.82	53.52	57.96	61.01	59.66
IMPORTS						
SOYBEAN	36.61	40.02	41.86	44.37	47.76	45.55
COTTONSEED	0.56	0.55	0.42	0.45	0.53	0.55
RAPESEED	1.72	1.41	1.54	2.19	1.81	1.83
SUNFLOWERSEED	2.41	2.03	2.29	2.78	2.58	2.50
FISH	3.41	3.18	2.85	3.20	2.91	2.91
PEANUT	0.25	0.29	0.10	0.27	0.23	0.18
COPRA	1.12	0.80	0.77	0.85	0.85	0.85
PALM KERNEL	3.09	3.02	3.12	3.20	3.23	3.24
TOTAL	49.16	51.28	52.95	57.31	59.89	57.60
CONSUMPTION						
SOYBEAN	117.92	124.32	129.95	129.37	140.12	137.18
COTTONSEED	11.14	12.04	11.21	11.94	14.33	14.38
RAPESEED	21.13	19.93	18.71	21.75	23.19	23.35
SUNFLOWERSEED	9.70	8.34	8.90	9.98	9.51	9.36
FISH	6.15	5.66	5.18	5.48	5.20	5.21
PEANUT	5.35	5.99	5.33	5.75	6.00	5.92
COPRA	1.82	1.64	1.57	1.70	1.72	1.71
PALM KERNEL	3.82	3.94	4.01	4.22	4.33	4.34
TOTAL	177.02	181.87	184.86	190.17	204.39	201.44
ENDING STOCKS						
SOYBEAN	3.77	4.15	3.76	3.51	4.74	3.85
COTTONSEED	0.09	0.11	0.07	0.10	0.08	0.08
RAPESEED	0.29	0.30	0.27	0.24	0.29	0.29
SUNFLOWERSEED	0.32	0.26	0.22	0.25	0.21	0.21
FISH	0.40	0.53	0.21	0.22	0.22	0.21
PEANUT	0.02	0.02	0.01	0.01	0.01	0.01
COPRA	0.16	0.16	0.12	0.09	0.09	0.09
PALM KERNEL	0.20	0.19	0.18	0.17	0.18	0.18
TOTAL	5.24	5.72	4.84	4.58	5.81	4.91

NOTE: TOTALS MAY NOT ADD DUE TO ROUNDING. FOR NOTES AND DESCRIPTION OF AREAS DESIGNATED SEE PAGE FOLLOWING TABLE 8.

SOURCE: COUNSELOR AND ATTACHE REPORTS
OFFICIAL STATISTICS, USDA ESTIMATES

DATE: February 2005

FOREIGN AGRICULTURAL SERVICE
COTTON, OILSEEDS, TOBACCO
and SEEDS DIVISION

TABLE 3.
MAJOR VEGETABLE OILS: WORLD SUPPLY AND DISTRIBUTION
(MILLION METRIC TONS)

	2000/01	2001/02	2002/03	PRELIM 2003/04	JANUARY 2004/05	FEBRUARY 2004/05
PRODUCTION						
SOYBEAN	26.70	28.83	30.30	30.01	32.65	32.21
PALM	24.28	25.44	27.28	29.13	30.46	31.01
SUNFLOWERSEED	8.46	7.49	8.17	9.18	8.84	8.75
RAPESEED	13.33	12.96	12.02	14.09	15.11	15.17
COTTONSEED	3.54	3.86	3.53	3.84	4.55	4.58
PEANUT	4.53	5.14	4.52	4.94	5.17	5.12
COCONUT	3.63	3.23	3.22	3.31	3.42	3.40
OLIVE	2.49	2.74	2.39	2.82	2.61	2.61
PALM KERNEL	3.06	3.12	3.30	3.50	3.62	3.68
TOTAL	90.01	92.80	94.73	100.82	106.43	106.52
EXPORTS						
SOYBEAN	7.15	8.42	9.19	8.89	9.75	9.47
PALM 1/	16.47	17.60	19.62	20.64	21.50	22.04
SUNFLOWERSEED	2.27	1.93	2.34	2.57	2.19	2.30
RAPESEED	1.14	1.05	0.91	1.32	1.39	1.39
COTTONSEED	0.16	0.16	0.12	0.13	0.14	0.13
PEANUT	0.25	0.30	0.19	0.31	0.27	0.28
COCONUT	1.72	1.87	1.82	1.72	1.77	1.77
OLIVE	0.51	0.42	0.47	0.50	0.48	0.48
PALM KERNEL	1.21	1.45	1.43	1.59	1.67	1.70
TOTAL	30.88	33.20	36.09	37.66	39.14	39.56
IMPORTS						
SOYBEAN	7.00	8.04	8.55	8.53	9.13	9.17
PALM 1/	16.12	16.86	19.48	20.31	21.22	21.54
SUNFLOWERSEED	2.04	1.87	2.14	2.01	2.05	2.07
RAPESEED	1.26	1.11	0.99	1.26	1.31	1.32
COTTONSEED	0.17	0.12	0.08	0.09	0.11	0.10
PEANUT	0.21	0.24	0.24	0.22	0.22	0.20
COCONUT	1.74	1.83	1.81	1.70	1.80	1.78
OLIVE	0.47	0.41	0.45	0.48	0.47	0.47
PALM KERNEL	1.11	1.32	1.51	1.45	1.53	1.52
TOTAL	30.11	31.79	35.26	36.06	37.82	38.17
CONSUMPTION						
SOYBEAN	26.42	28.60	30.36	29.98	31.83	31.81
PALM	23.95	24.95	27.54	28.52	29.88	30.20
SUNFLOWERSEED	8.32	7.59	7.99	8.59	8.75	8.57
RAPESEED	13.44	13.06	12.14	14.07	15.02	15.09
COTTONSEED	3.49	3.86	3.51	3.77	4.52	4.55
PEANUT	4.48	5.05	4.61	4.83	5.12	5.05
COCONUT	3.47	3.22	3.29	3.34	3.44	3.40
OLIVE	2.56	2.56	2.64	2.70	2.77	2.76
PALM KERNEL	2.76	3.03	3.38	3.41	3.49	3.51
TOTAL	88.89	91.92	95.46	99.21	104.81	104.95
ENDING STOCKS						
SOYBEAN	2.71	2.57	1.87	1.55	1.74	1.65
PALM	2.84	2.59	2.20	2.48	2.78	2.78
SUNFLOWERSEED	0.65	0.48	0.47	0.50	0.46	0.46
RAPESEED	0.70	0.66	0.61	0.56	0.57	0.56
COTTONSEED	0.14	0.09	0.06	0.10	0.10	0.10
PEANUT	0.16	0.18	0.14	0.16	0.16	0.16
COCONUT	0.38	0.35	0.27	0.22	0.22	0.23
OLIVE	0.71	0.89	0.62	0.73	0.57	0.57
PALM KERNEL	0.48	0.44	0.45	0.39	0.38	0.38
TOTAL	8.77	8.25	6.68	6.69	6.97	6.88

NOTE: TOTALS MAY NOT ADD DUE TO ROUNDING. FOR NOTES AND DESCRIPTION OF AREAS DESIGNATED SEE PAGE FOLLOWING TABLE 8.

1/ PALM OIL TRADE EXCLUDES TRANSSHIPMENTS THROUGH SINGAPORE.

SOURCE: COUNSELOR AND ATTACHE REPORTS
OFFICIAL STATISTICS, USDA ESTIMATES
DATE: February 2005

FOREIGN AGRICULTURAL SERVICE
COTTON, OILSEEDS, TOBACCO
and SEEDS DIVISION

TABLE 4.
MAJOR OILSEEDS: 1/
AREA, YIELD, AND PRODUCTION BY MAIN PRODUCERS

	AVERAGE 1998/99-2002/03			PRELIMINARY 2003/04			FORECAST 2004/05		
	AREA 2/	YIELD 3/	PROD 4/	AREA 2/	YIELD 3/	PROD 4/	AREA 2/	YIELD 3/	PROD 4/
SOYBEAN									
UNITED STATES	29.20	2.57	75.11	29.33	2.28	66.78	29.93	2.86	85.48
BRAZIL	15.05	2.67	40.20	21.48	2.45	52.60	23.00	2.74	63.00
CHINA	8.80	1.74	15.35	9.30	1.66	15.40	9.80	1.84	18.00
ARGENTINA	10.23	2.63	26.90	14.00	2.43	34.00	14.20	2.75	39.00
EUROPEAN UNION (25)	0.29	3.17	0.92	0.30	2.40	0.71	0.27	2.92	0.80
PARAGUAY	1.35	2.59	3.49	1.75	2.29	4.00	2.00	2.50	5.00
OTHER	11.21	1.23	13.80	12.19	1.34	16.32	13.83	1.25	17.34
TOTAL	76.12	2.31	175.78	88.34	2.15	189.81	93.03	2.46	228.63
COTTONSEED									
CHINA	4.25	1.95	8.27	5.11	1.71	8.74	5.70	1.99	11.37
UNITED STATES	5.13	1.12	5.77	4.86	1.24	6.05	5.28	1.44	7.63
FSU-12	2.47	1.18	2.90	2.45	1.16	2.83	2.58	1.29	3.33
INDIA	8.60	0.58	5.01	7.80	0.75	5.86	9.00	0.75	6.79
PAKISTAN	2.94	1.19	3.51	3.09	1.06	3.29	3.20	1.53	4.88
BRAZIL	0.75	1.61	1.22	1.07	2.03	2.18	1.07	2.04	2.18
OTHER	7.15	0.98	7.03	6.91	0.96	6.61	7.91	1.00	7.89
TOTAL	31.29	1.08	33.71	31.29	1.14	35.56	34.75	1.27	44.07
PEANUT									
INDIA	7.84	0.80	6.29	8.00	0.96	7.70	8.00	0.94	7.50
CHINA	4.61	2.96	13.64	5.06	2.65	13.42	5.30	2.89	15.30
UNITED STATES	0.56	3.01	1.69	0.53	3.54	1.88	0.56	3.43	1.93
SENEGAL	0.77	0.90	0.69	0.53	0.85	0.45	0.55	0.82	0.45
SUDAN	0.55	0.67	0.37	0.55	0.67	0.37	0.55	0.67	0.37
BRAZIL	0.10	1.87	0.18	0.10	2.26	0.22	0.11	2.23	0.25
ARGENTINA	0.24	2.11	0.50	0.16	1.99	0.32	0.19	2.11	0.40
SOUTH AFRICA	0.10	1.39	0.13	0.06	1.31	0.08	0.06	1.31	0.08
OTHER	7.18	1.05	7.52	7.68	1.04	8.01	7.81	1.05	8.20
TOTAL	21.95	1.41	31.02	22.66	1.43	32.45	23.14	1.49	34.48
SUNFLOWERSEED									
FSU-12	7.14	0.94	6.70	9.37	1.05	9.79	8.50	0.99	8.39
ARGENTINA	2.73	1.74	4.74	1.83	1.75	3.20	2.00	1.70	3.40
OTHER EUROPE	1.54	1.14	1.75	1.96	1.32	2.60	1.79	1.57	2.81
UNITED STATES	1.16	1.49	1.73	0.89	1.36	1.21	0.69	1.34	0.93
CHINA	1.08	1.59	1.72	1.17	1.49	1.74	1.20	1.54	1.85
EUROPEAN UNION (25)	1.89	1.66	3.15	2.43	1.61	3.92	2.17	1.70	3.70
OTHER	5.16	0.91	4.69	5.11	0.79	4.04	5.31	0.81	4.27
TOTAL	20.69	1.18	24.48	22.77	1.16	26.50	21.66	1.17	25.35
RAPSEED									
CHINA	7.03	1.47	10.34	7.22	1.58	11.42	7.80	1.54	12.00
EUROPEAN UNION (25)	3.45	2.83	9.74	4.15	2.67	11.09	4.43	3.31	14.63
CANADA	4.57	1.44	6.57	4.69	1.44	6.77	4.94	1.56	7.70
INDIA	5.46	0.80	4.37	6.75	1.01	6.80	6.90	0.93	6.40
OTHER EUROPE	0.09	1.57	0.14	0.04	1.75	0.08	0.10	1.70	0.17
OTHER	3.92	1.45	5.68	2.64	1.20	3.17	2.43	1.13	2.75
TOTAL	24.52	1.50	36.83	25.50	1.54	39.32	26.59	1.64	43.65
TOTAL OILSEEDS	174.57	1.73	301.81	190.56	1.70	323.64	199.16	1.89	376.17

1/ SPLIT YEAR INCLUDES NORTHERN HEMISPHERE CROPS HARVESTED IN THE LATE MONTHS OF THE FIRST YEAR SHOWN COMBINED WITH SOUTHERN HEMISPHERE AND CERTAIN NORTHERN HEMISPHERE CROPS HARVESTED IN THE EARLY MONTHS OF THE FOLLOWING YEAR.

2/ IN MILLION HECTARES. 3/ IN TONS PER HECTARE. 4/ IN MILLION METRIC TONS.

SOURCE: COUNSELOR AND ATTACHE REPORTS
OFFICIAL STATISTICS, USDA ESTIMATES
DATE: February 2005

FOREIGN AGRICULTURAL SERVICE
COTTON, OILSEEDS, TOBACCO
and SEEDS DIVISION

TABLE 5
SOYBEANS: WORLD SUPPLY AND DISTRIBUTION
(MILLION METRIC TONS)

	2000/01	2001/02	2002/03	PRELIM 2003/04	JANUARY 2004/05	FEBRUARY 2004/05
PRODUCTION						
UNITED STATES	75.06	78.67	75.01	66.78	85.48	85.48
BRAZIL	39.50	43.50	52.00	52.60	64.50	63.00
ARGENTINA	27.80	30.00	35.50	34.00	39.00	39.00
CHINA	15.40	15.41	16.51	15.40	18.00	18.00
INDIA	5.25	5.40	4.00	6.80	7.00	6.50
PARAGUAY	3.50	3.55	4.50	4.00	5.00	5.00
OTHER	9.42	8.60	9.60	10.23	11.78	11.64
TOTAL	175.93	185.12	197.12	189.81	230.77	228.63
EXPORTS						
UNITED STATES	27.10	28.95	28.42	24.09	27.49	27.49
BRAZIL	15.47	15.00	19.73	19.82	22.30	22.30
ARGENTINA	7.42	6.01	8.71	6.71	7.67	7.67
PARAGUAY	2.51	2.39	3.20	2.27	2.75	2.75
OTHER	1.30	1.25	1.62	2.29	2.53	2.51
TOTAL	53.79	53.59	61.69	55.18	62.74	62.72
IMPORTS						
EUROPEAN UNION (25)	17.45	18.54	16.87	14.63	15.86	15.66
OTHER EUROPE	0.60	0.72	0.67	0.59	0.70	0.70
FSU-12	0.09	0.14	0.09	0.01	0.06	0.06
ASIA	25.34	23.93	34.29	29.13	34.54	34.84
CHINA	13.25	10.39	21.42	16.93	22.00	22.50
JAPAN	4.77	5.02	5.09	4.69	5.00	4.70
KOREA, REP OF	1.39	1.43	1.52	1.37	1.55	1.55
TAIWAN	2.33	2.58	2.35	2.22	2.32	2.32
INDONESIA	1.13	1.41	1.24	1.32	1.38	1.38
MID-EAST/N AFR	2.19	2.50	2.54	2.84	3.50	3.50
LATIN AMERICA	6.82	7.48	7.30	6.04	7.06	6.72
MEXICO	4.38	4.51	4.23	3.80	4.40	4.10
BRAZIL	0.73	1.11	1.32	0.33	0.33	0.33
OTHER	0.56	1.09	0.92	0.79	0.51	0.51
TOTAL	53.04	54.41	62.67	54.03	62.22	61.98
CRUSH						
UNITED STATES	44.63	46.26	43.95	41.63	45.18	45.04
LATIN AMERICA	47.17	53.21	58.33	62.06	67.44	65.11
BRAZIL	22.74	24.69	27.17	29.33	32.44	30.74
ARGENTINA	17.30	20.86	23.53	25.04	26.20	25.84
MEXICO	4.45	4.61	4.34	3.89	4.49	4.19
EUROPEAN UNION (25)	16.60	17.63	16.29	14.20	15.10	14.90
FSU-12	0.47	0.56	0.62	0.54	0.67	0.67
OTHER EUROPE	0.82	1.00	1.02	0.98	1.15	1.16
ASIA	33.12	35.26	40.30	40.50	43.94	43.90
JAPAN	3.78	3.89	4.01	3.66	3.89	3.65
CHINA	18.90	20.25	26.54	25.44	28.25	28.75
TAIWAN	2.13	2.19	2.15	2.05	2.06	2.06
INDIA	4.53	4.63	3.42	5.53	5.94	5.53
OTHER	4.05	4.22	4.38	4.37	5.25	5.25
TOTAL	146.85	158.13	164.89	164.28	178.72	176.03
ENDING STOCKS						
UNITED STATES	6.74	5.66	4.85	3.06	11.84	11.98
BRAZIL	9.43	12.11	15.93	16.80	23.46	23.66
ARGENTINA	7.93	10.16	12.47	13.68	17.74	18.10
OTHER	7.76	5.26	7.40	5.32	7.77	7.61
TOTAL	31.86	33.19	40.65	38.86	60.81	61.35
U.S. SEASON AVG.PRICE (\$/bu)	4.54	4.38	5.53	7.34	4.75 -5.45	4.80 -5.40

NOTE: TOTALS MAY NOT ADD DUE TO ROUNDING. FOR NOTES AND DESCRIPTION OF PRICES AND AREAS DESIGNATED SEE PAGE FOLLOWING TABLE 8.

1/ BRAZIL AND ARGENTINA ESTIMATES HAVE BEEN ADJUSTED TO A CONSISTENT OCT-SEPT YEAR; ESTIMATES OF OTHER COUNTRIES (INCLUDING THE U.S.) ARE ON A LOCAL MARKETING YEAR.

TABLE 6
SOYBEAN MEAL: WORLD SUPPLY AND DISTRIBUTION
(MILLION METRIC TONS)

	2000/01	2001/02	2002/03	PRELIM 2003/04	JANUARY 2004/05	FEBRUARY 2004/05
PRODUCTION						
UNITED STATES	35.73	36.55	34.65	32.95	35.81	35.63
LATIN AMERICA	37.14	41.95	45.97	48.60	53.03	51.23
BRAZIL	17.86	19.41	21.35	22.78	25.29	24.13
ARGENTINA	13.65	16.50	18.59	19.76	20.75	20.39
MEXICO	3.53	3.66	3.44	3.09	3.64	3.34
EUROPEAN UNION (25)	13.07	13.89	12.83	11.18	11.93	11.73
OTHER EUROPE	0.64	0.78	0.79	0.78	0.89	0.90
FSU-12	0.37	0.43	0.48	0.41	0.51	0.51
ASIA	26.27	28.13	31.78	32.06	34.76	34.73
JAPAN	2.93	3.01	3.07	2.81	2.98	2.80
CHINA	15.05	16.30	21.00	20.19	22.40	22.79
TAIWAN	1.69	1.72	1.69	1.61	1.62	1.62
INDIA	3.61	3.70	2.73	4.42	4.75	4.42
OTHER	3.22	3.41	3.45	3.44	4.14	4.14
TOTAL	116.43	125.15	129.95	129.42	141.08	138.86
EXPORTS						
UNITED STATES	6.99	6.81	5.46	3.94	5.17	5.17
BRAZIL	10.68	11.98	13.75	14.76	17.01	15.85
ARGENTINA	13.60	16.07	18.46	19.34	20.31	19.94
EUROPEAN UNION (25)	0.26	0.33	0.34	0.39	0.31	0.40
INDIA	2.35	2.45	1.23	3.31	2.10	2.10
OTHER	1.63	2.83	3.01	2.93	3.44	3.44
TOTAL	35.50	40.46	42.24	44.67	48.33	46.90
IMPORTS						
EUROPEAN UNION (25)	18.33	19.67	20.33	21.86	24.50	22.25
OTHER EUROPE	0.61	0.58	0.65	0.64	0.71	0.71
FSU-12	0.21	0.37	0.36	0.44	0.49	0.49
ASIA & OCEANIA	7.91	9.25	9.61	9.55	9.48	9.63
CHINA	0.10	0.02	0.00	0.02	0.07	0.07
PHILLIPINES	1.11	1.55	1.43	1.30	1.33	1.33
MID-EAST/N AFR	4.39	4.42	4.70	5.22	5.85	5.70
EGYPT	1.06	1.06	1.02	0.82	1.10	1.05
LATIN AMERICA	3.64	3.97	4.46	4.78	5.00	5.04
OTHER	1.52	1.76	1.76	1.88	1.73	1.73
TOTAL	36.61	40.02	41.86	44.37	47.76	45.55
CONSUMPTION						
UNITED STATES	28.71	30.00	29.36	29.27	30.75	30.57
LATIN AMERICA	15.66	16.40	16.79	17.23	18.40	18.21
BRAZIL	7.55	7.74	8.02	8.12	8.36	8.36
ARGENTINA	0.22	0.23	0.23	0.37	0.29	0.35
MEXICO	3.78	4.05	4.09	3.80	4.40	4.09
EUROPEAN UNION (25)	31.21	32.98	32.99	32.67	36.12	33.57
FSU-12	0.62	0.77	0.82	0.86	0.99	0.99
OTHER EUROPE	1.15	1.17	1.28	1.28	1.44	1.45
ASIA & OCEANIA	31.78	33.80	39.43	38.09	41.38	41.51
JAPAN	3.56	4.06	4.13	4.18	4.26	4.09
CHINA	15.04	15.27	20.21	19.56	21.65	22.04
TAIWAN	1.72	1.69	1.71	1.72	1.67	1.69
KOREA, REP OF	2.28	2.41	2.46	2.33	2.39	2.40
MID-EAST/N AFR	5.81	6.09	6.21	7.00	7.89	7.74
OTHER	2.99	3.11	3.08	2.97	3.14	3.14
TOTAL	117.92	124.32	129.95	129.37	140.12	137.18
ENDING STOCKS						
UNITED STATES	0.35	0.22	0.20	0.19	0.23	0.23
BRAZIL	0.72	0.75	0.64	0.78	1.70	0.85
ARGENTINA	0.10	0.30	0.20	0.25	0.40	0.35
OTHER	2.60	2.88	2.72	2.29	2.42	2.42
TOTAL	3.77	4.15	3.76	3.51	4.74	3.85
U.S. SEASON AVG.PRICE (\$/s)	173.6	167.73	181.57	256.05	150 - 165	150 - 165

NOTE: TABLES MAY NOT ADD DUE TO ROUNDING. FOR NOTES AND DESCRIPTION OF PRICES AND AREAS DESIGNATED SEE PAGE FOLLOWING TABLE 8.

TABLE 7
SOYBEAN OIL: WORLD SUPPLY AND DISTRIBUTION
(MILLION METRIC TONS)

	2000/01	2001/02	2002/03	PRELIM 2003/04	JANUARY 2004/05	FEBRUARY 2004/05
PRODUCTION						
UNITED STATES	8.36	8.57	8.36	7.75	8.51	8.51
LATIN AMERICA	8.70	9.84	10.81	11.48	12.40	12.00
BRAZIL	4.27	4.64	5.11	5.64	6.03	5.75
ARGENTINA	3.19	3.88	4.38	4.51	4.84	4.78
MEXICO	0.76	0.79	0.74	0.66	0.78	0.72
EUROPEAN UNION (25)	2.96	3.14	2.90	2.53	2.69	2.65
FSU-12	0.07	0.08	0.09	0.08	0.10	0.10
OTHER EUROPE	0.15	0.18	0.18	0.18	0.20	0.20
ASIA	5.79	6.29	7.22	7.27	7.86	7.86
JAPAN	0.69	0.73	0.76	0.69	0.73	0.69
CHINA	3.24	3.58	4.73	4.54	5.04	5.12
TAIWAN	0.36	0.37	0.36	0.34	0.34	0.34
INDIA	0.82	0.86	0.63	1.02	1.10	1.02
OTHER	0.68	0.73	0.74	0.73	0.88	0.88
TOTAL	26.70	28.83	30.30	30.01	32.65	32.21
EXPORTS						
UNITED STATES	0.64	1.14	1.03	0.42	0.59	0.59
BRAZIL	1.53	1.78	2.27	2.72	2.96	2.73
ARGENTINA	3.21	3.73	4.34	4.41	4.64	4.66
EUROPEAN UNION (25)	0.89	0.89	0.71	0.53	0.69	0.63
OTHER	0.88	0.88	0.85	0.80	0.88	0.86
TOTAL	7.15	8.42	9.19	8.89	9.75	9.47
IMPORTS						
UNITED STATES	0.03	0.02	0.02	0.14	0.05	0.05
EUROPEAN UNION (25)	0.04	0.06	0.04	0.06	0.05	0.05
FSU-12	0.46	0.59	0.18	0.11	0.19	0.19
OTHER EUROPE	0.01	0.03	0.02	0.02	0.02	0.02
ASIA	3.10	3.35	4.12	4.45	4.55	4.55
CHINA	0.36	0.55	1.71	2.73	2.42	2.42
INDIA	1.40	1.55	1.26	0.76	1.05	1.05
PAKISTAN	0.18	0.09	0.16	0.05	0.08	0.08
MID-EAST/N AFR	1.73	2.05	2.14	1.76	2.06	2.03
IRAN	0.64	0.84	0.96	0.74	0.90	0.90
MOROCCO	0.31	0.30	0.37	0.34	0.34	0.34
TURKEY	0.12	0.23	0.14	0.08	0.13	0.13
TUNISIA	0.16	0.18	0.18	0.19	0.20	0.20
LATIN AMERICA	1.16	1.44	1.46	1.46	1.63	1.70
BRAZIL	0.07	0.15	0.07	0.03	0.05	0.05
MEXICO	0.08	0.16	0.19	0.09	0.20	0.15
CHILE	0.09	0.15	0.20	0.19	0.22	0.22
PERU	0.20	0.24	0.22	0.23	0.27	0.27
COLOMBIA	0.14	0.13	0.14	0.15	0.16	0.16
OTHER	0.48	0.49	0.57	0.54	0.58	0.58
TOTAL	7.00	8.04	8.55	8.53	9.13	9.17
CONSUMPTION						
UNITED STATES	7.40	7.64	7.75	7.65	7.85	7.85
LATIN AMERICA	5.20	5.45	5.47	5.43	5.83	5.86
BRAZIL	3.03	3.03	2.99	2.95	3.06	3.06
ARGENTINA	0.11	0.12	0.12	0.11	0.12	0.12
MEXICO	0.84	0.94	0.94	0.75	0.98	0.86
EUROPEAN UNION (25)	2.13	2.28	2.24	2.06	2.09	2.07
FSU-12	0.50	0.65	0.33	0.20	0.28	0.28
OTHER EUROPE	0.12	0.17	0.16	0.15	0.17	0.17
ASIA	8.41	9.41	11.17	11.58	12.28	12.27
JAPAN	0.70	0.73	0.77	0.74	0.77	0.72
CHINA	3.54	4.14	6.39	7.17	7.52	7.60
TAIWAN	0.38	0.41	0.43	0.43	0.43	0.43
KOREA, REP OF	0.36	0.40	0.37	0.41	0.44	0.44
INDIA	2.02	2.39	1.95	1.78	2.10	2.03
PAKISTAN	0.21	0.14	0.17	0.07	0.09	0.09
BANGLADESH	0.50	0.42	0.41	0.37	0.36	0.36
MID-EAST/N AFR	1.85	2.19	2.33	2.06	2.41	2.38
IRAN	0.57	0.76	0.93	0.77	0.94	0.94
MOROCCO	0.35	0.31	0.40	0.44	0.39	0.41
TURKEY	0.13	0.25	0.18	0.10	0.17	0.17
OTHER	0.80	0.82	0.92	0.85	0.92	0.92
TOTAL	26.42	28.60	30.36	29.98	31.83	31.81
ENDING STOCKS						
UNITED STATES	1.26	1.07	0.68	0.49	0.61	0.61
BRAZIL	0.19	0.18	0.10	0.10	0.15	0.10
ARGENTINA	0.10	0.13	0.05	0.04	0.13	0.04
OTHER	1.16	1.19	1.05	0.93	0.85	0.90
TOTAL	2.71	2.57	1.87	1.55	1.74	1.65
U.S. SEASON AVG.PRICE (c/l)	14.15	16.46	22.04	29.97	21.50 - 23.50	20.50 - 22.50

NOTE: TABLES MAY NOT ADD DUE TO ROUNDING. FOR NOTES AND DESCRIPTION OF PRICES AND AREAS DESIGNATED SEE PAGE FOLLOWING TABLE 8.

TABLE 8
SOYBEANS AND PRODUCTS: WORLD TRADE
(1000 METRIC TONS)

EXPORTERS	MARKETING YEAR	SOYBEANS			SOYBEAN MEAL			SOYBEAN OIL		
		2002/03	2003/04	2004/05	2002/03	2003/04	2004/05	2002/03	2003/04	2004/05
UNITED STATES 1/	(OCT-SEP)	28,423	24,089	27,488	5,461	3,941	5,171	1,027	424	590
BRAZIL	(OCT-SEP)	19,734	19,816	22,303	13,750	14,761	15,850	2,267	2,719	2,734
ARGENTINA	(OCT-SEP)	8,713	6,710	7,665	18,461	19,343	19,940	4,340	4,413	4,663
EUROPEAN UNION (25)	(OCT-SEP)	23	6	10	340	391	400	705	534	626
INDIA	(OCT-SEP)	0	240	10	1,225	3,310	2,100	5	15	10
PARAGUAY	(OCT-SEP)	3,200	2,265	2,750	833	900	1,070	157	176	200
OTHER	2/	1,597	2,049	2,489	2,174	2,028	2,366	686	605	650
WORLD TOTAL	2/	61,690	55,175	62,715	42,244	44,674	46,897	9,187	8,886	9,473
SELECTED IMPORTERS										
EUROPEAN UNION (25)	(OCT-SEP)	16,872	14,632	15,659	20,329	21,857	22,250	37	57	51
FSU-12	(OCT-SEP)	86	12	56	362	441	486	183	110	189
RUSSIA	(OCT-SEP)	15	1	25	280	353	365	181	98	182
UKRAINE	(OCT-SEP)	1	1	1	80	80	110	1	0	0
OTHER EUROPE	(OCT-SEP)	672	586	700	645	641	710	16	18	18
ASIA	2/	34,292	29,133	34,838	9,200	9,115	9,104	4,118	4,449	4,545
CHINA	(OCT-SEP)	21,417	16,933	22,500	0	19	70	1,712	2,729	2,420
JAPAN	(OCT-SEP)	5,087	4,688	4,700	1,073	1,195	1,250	12	24	35
TAIWAN	(OCT-SEP)	2,351	2,218	2,320	18	84	50	39	61	75
KOREA, REP OF	(NOV-OCT)	1,516	1,368	1,550	1,497	1,293	1,450	157	211	225
INDONESIA	(OCT-SEP)	1,235	1,316	1,375	1,500	1,542	1,525	16	19	18
THAILAND	(OCT-SEP)	1,708	1,407	1,300	1,900	1,646	1,450	3	0	1
MALAYSIA	(OCT-SEP)	544	550	575	445	566	625	126	78	80
PHILIPPINES	(JAN-DEC)	250	320	350	1,433	1,300	1,325	17	15	16
INDIA	(OCT-SEP)	0	0	0	0	0	0	1,255	759	1,050
PAKISTAN	(OCT-SEP)	87	79	50	70	150	140	162	50	80
MID-EAST/N AFR	2/	2,539	2,835	3,500	4,702	5,224	5,697	2,142	1,755	2,034
ISRAEL	(OCT-SEP)	500	494	600	46	94	90	20	10	10
IRAN	(OCT-SEP)	533	837	900	466	850	900	959	735	900
EGYPT	(OCT-SEP)	270	242	550	1,017	820	1,050	268	215	220
MOROCCO	(OCT-SEP)	380	450	475	110	135	42	367	335	335
TUNISIA	(OCT-SEP)	0	0	0	330	380	375	175	190	200
ALGERIA	(JAN-DEC)	0	0	0	440	470	510	62	40	60
TURKEY	(NOV-OCT)	756	612	800	435	430	585	137	78	130
OTHER AFRICA	2/	26	28	35	558	577	583	408	360	392
SOUTH AFRICA	(JUN-JUL)	19	25	30	527	540	540	137	127	137
LATIN AMERICA	2/	7,295	6,039	6,720	4,461	4,780	5,038	1,461	1,455	1,703
MEXICO	(SEP-AUG)	4,230	3,797	4,100	621	725	775	192	88	150
VENEZUELA	(OCT-SEP)	18	20	50	512	700	730	201	302	330
CANADA	(AUG-JUL)	700	612	325	1,050	1,057	1,000	110	130	130
OTHER	2/	192	151	146	557	675	680	74	193	109
WORLD TOTAL	2/	62,674	54,028	61,979	41,864	44,367	45,548	8,549	8,527	9,171

NOTE: SEE FOLLOWING PAGE FOR COUNTRIES INCLUDED IN REGIONAL AREAS.

1/ SEP-AUG FOR SOYBEANS.

2/ AN AGGREGATE OF INDIVIDUAL MARKETING YEARS.

SOURCE: COUNSELOR AND ATTACHE REPORTS, OFFICIAL STATISTICS, USDA ESTIMATES

DATE: February 2005

FOREIGN AGRICULTURAL SERVICE
COTTON, OILSEEDS, TOBACCO
and SEEDS DIVISION

Notes on World Supply/Demand Tables

- 1) Trade, crush, consumption, and stocks data are aggregated using individual marketing years with the exception of Argentina and Brazil. These two countries are converted to an October-September basis. Marketing years for countries in the Northern Hemisphere begin in the first year shown. Those in the Southern Hemisphere begin in the second year.
- 2) World imports and exports will not balance. This is due to differences in marketing years and time lags between exportation and importation.
- 3) Stocks data are not estimated for all countries.
- 4) Price averages are dollars per bushel for soybeans, dollars per short ton for soybean meal and cents per pound for soybean oil.

Regional area and county designations in the soybean, soybean meal, and soybean oil supply, distribution, and trade tables are as follows:

Asia	Africa, North	FSU-12	Latin America	Europe (EU)*
Bangladesh	Algeria	Armenia	Argentina	Austria
Burma	Egypt	Azerbaijan	Barbados	Belgium
China	Libya	Byelarus	Bolivia	Cyprus
Cambodia	Morocco	Georgia	Brazil	Czech Republic
Hong Kong	Tunisia	Kazakhstan	Chile	Denmark
India		Kyrgyzstan	Colombia	Estonia
Indonesia	Africa, Other	Moldova	Costa Rica	Finland
Japan	Angola	Russia	Cuba	France
Korea, North	Burkina (Upper Volta)	Tajikistan	Dominican Rep	Germany
Korea, Republic of	Ethiopia	Turkmenistan	Ecuador	Greece
Malaysia	Ivory Coast	Ukraine	El Salvador	Hungary
Pakistan	Kenya	Uzbekistan	Guatemala	Ireland
Philippines	Malagasy Republic		Guyana	Italy
Singapore	Mauritius	Europe, Other	Haiti	Latvia
Sri Lanka	Nigeria	Albania	Honduras	Lituania
Taiwan	Senegal	Azores	Jamaica	Luxemburg
Thailand	Somalia	Bulgaria	Mexico	Malta
Vietnam	South Africa	Bosnia and Hercegovina	Netherlands Antilles	Netherlands
	Tanzania	Croatia	Nicaragua	Poland
Middle East	Zambia	Iceland	Panama	Portugal
Iran	Zimbabwe	Macedonia	Paraguay	Slovakia
Iraq		Norway	Peru	Slovenia
Israel	Oceania	Romania	Suriname	Spain
Jordan	Australia	Serbia and Montenegro	Trinidad-Tobago	Sweden
Kuwait	New Zealand	Switzerland	Uruguay	United Kingdom
Lebanon		Yugoslavia	Venezuela	
Saudi Arabia				
Syria	United States	Canada		
Turkey				

TABLE 9
VEGETABLE OIL PRODUCTION, CONSUMPTION AND IMPORTS
FOR SELECTED COUNTRIES, 1,000 METRIC TONS

		IMPORT MARKETING YEAR	1999/00	2000/01	2001/02	2002/03	PRELIM 2003/04	FORECAST 2004/05
INDIA	TOTAL PRODUCTION	MY	5,376	5,210	5,891	4,749	6,832	6,921
	TOTAL CONSUMPTION	MY	10,089	11,131	11,024	10,545	11,238	11,785
	TOTAL IMPORTS	MY	4,894	6,018	5,131	5,488	4,488	5,095
	PALM OIL	(OCT-SEP)	3,300	4,000	3,400	3,950	3,550	3,850
	SOYBEAN OIL	(OCT-SEP)	790	1,400	1,550	1,255	759	1,050
	SUNFLOWERSEED OIL	(OCT-SEP)	570	455	50	101	87	70
FSU-12	TOTAL PRODUCTION	MY	2,718	2,791	2,535	3,229	3,593	3,535
	TOTAL CONSUMPTION	MY	2,852	3,062	3,364	2,984	3,234	3,418
	TOTAL IMPORTS	MY	857	1,072	1,215	850	804	875
	PALM OIL	(OCT-SEP)	125	228	332	347	400	410
	SUNFLOWERSEED OIL	(SEP-AUG)	357	336	263	308	287	264
	SOYBEAN OIL	(OCT-SEP)	227	461	594	183	110	189
PAKISTAN	TOTAL PRODUCTION	MY	634	588	569	578	612	731
	TOTAL CONSUMPTION	MY	1,882	2,049	1,906	2,063	1,858	2,008
	TOTAL IMPORTS	MY	1,284	1,500	1,347	1,534	1,300	1,340
	PALM OIL	(OCT-SEP)	1,039	1,295	1,252	1,370	1,250	1,250
	SOYBEAN OIL	(OCT-SEP)	225	175	85	162	50	80
EGYPT	TOTAL PRODUCTION	MY	96	93	128	107	86	148
	TOTAL CONSUMPTION	MY	973	1,055	981	1,298	1,156	1,248
	TOTAL IMPORTS	MY	877	952	853	1,191	1,070	1,100
	SUNFLOWERSEED OIL	(OCT-SEP)	133	79	90	83	170	170
	COTTONSEED OIL	(OCT-SEP)	11	8	7	1	10	10
	PALM OIL	(OCT-SEP)	455	499	415	839	675	700
	SOYBEAN OIL	(OCT-SEP)	278	366	341	268	215	220
IRAN	TOTAL PRODUCTION	MY	129	160	122	134	182	197
	TOTAL CONSUMPTION	MY	998	890	937	1,270	1,097	1,236
	TOTAL IMPORTS	MY	944	918	987	1,276	1,042	1,166
	PALM OIL	(OCT-SEP)	140	170	72	210	240	240
	SOYBEAN OIL	(OCT-SEP)	604	638	835	959	735	900
	SUNFLOWERSEED OIL	(OCT-SEP)	200	110	80	101	47	6
ALGERIA	TOTAL PRODUCTION	MY	35	30	25	15	40	30
	TOTAL CONSUMPTION	MY	279	289	505	453	422	405
	TOTAL IMPORTS	MY	239	250	474	438	387	375
	SUNFLOWERSEED OIL	(JAN-DEC)	172	163	190	215	205	175
	RAPESEED OIL	(JAN-DEC)	34	9	173	41	32	30
MOROCCO	TOTAL PRODUCTION	MY	112	88	116	113	204	191
	TOTAL CONSUMPTION	MY	404	412	409	490	571	544
	TOTAL IMPORTS	MY	285	325	331	395	348	358
	SOYBEAN OIL	(OCT-SEP)	262	311	303	367	335	335
	RAPESEED OIL	(OCT-SEP)	10	5	5	5	5	5
NIGERIA	TOTAL PRODUCTION	MY	1,170	1,142	1,182	1,200	1,227	1,248
	TOTAL CONSUMPTION	MY	1,306	1,358	1,385	1,395	1,323	1,418
	TOTAL IMPORTS	MY	181	251	223	225	127	201
	PALM OIL	(OCT-SEP)	180	250	174	167	126	200
VENEZUELA	TOTAL PRODUCTION	MY	93	108	98	92	97	101
	TOTAL CONSUMPTION	MY	332	344	321	336	514	506
	TOTAL IMPORTS	MY	257	235	239	246	422	410
	SUNFLOWERSEED OIL	(OCT-SEP)	23	28	11	12	39	30
	SOYBEAN OIL	(OCT-SEP)	227	197	214	201	302	330
CHINA	TOTAL PRODUCTION	MY	9,799	10,765	11,251	11,833	11,940	13,277
	TOTAL CONSUMPTION	MY	12,109	13,520	14,545	17,408	18,945	20,559
	TOTAL IMPORTS	MY	2,501	2,891	3,328	5,656	7,125	7,259
	PALM OIL	(OCT-SEP)	1,351	2,028	2,475	3,531	3,710	4,060
	SOYBEAN OIL	(OCT-SEP)	682	355	551	1,712	2,729	2,420
	RAPESEED OIL	(OCT-SEP)	350	200	61	127	368	415
BANGLADESH	TOTAL PRODUCTION	MY	191	181	152	154	127	149
	TOTAL CONSUMPTION	MY	851	1,014	989	989	1,056	1,069
	TOTAL IMPORTS	MY	675	848	829	817	871	928
	SOYBEAN OIL	(OCT-SEP)	481	503	406	396	332	365
	PALM OIL	(OCT-SEP)	172	327	399	398	528	550
TOTAL OF SELECTED IMPORTERS	TOTAL PRODUCTION	MY	20,353	21,156	22,069	22,204	24,940	26,528
	TOTAL CONSUMPTION	MY	32,075	35,124	36,366	39,231	41,414	44,196
	TOTAL IMPORTS	MY	12,994	15,260	14,957	18,116	17,984	19,107
	PALM OIL	MY	6,788	8,868	8,620	10,965	10,670	11,420
	RAPESEED OIL	MY	684	318	282	243	412	473
	SOYBEAN OIL	MY	3,791	4,424	4,904	5,568	5,608	5,950
	SUNFLOWERSEED OIL	MY	1,487	1,206	711	846	884	775

NOTE: PRODUCTION IS OIL PROCESSED FROM DOMESTIC AND/OR IMPORTED OILSEEDS, PLUS OIL FROM OTHER DOMESTIC SOURCES (E.G. PALM OIL, FISH OIL). ANIMAL FATS ARE NOT INCLUDED. CONSUMPTION DATA MAY INCLUDE YEAR-TO-YEAR ADJUSTMENTS IN CASES WHERE STOCKS DATA ARE NOT AVAILABLE OR ARE NOT RELIABLE. TOTALS ARE FOR ALL COUNTRIES CONTAINED IN THE TABLE.

SOURCE: COUNSELOR AND ATTACHE REPORTS, OFFICIAL STATISTICS
USDA ESTIMATES

FOREIGN AGRICULTURAL SERVICE
COTTON, OILSEEDS, TOBACCO
and SEEDS DIVISION

DATE: February 2005

TABLE 10
 UNITED STATES: OILSEEDS AND PRODUCTS SUPPLY AND DISTRIBUTION
 LOCAL MARKETING YEARS
 (1,000 METRIC TONS)

	AREA HA	YIELD MT/HA	PROD	IMPORTS	EXPORTS	CRUSH	DOMESTIC CONS	ENDING STOCKS
MAJOR OILSEEDS								
1995/96(95)	33,536	2.06	69,026	466	23,872	42,572	49,842	6,051
1996/97(96)	32,555	2.30	74,755	594	24,746	44,135	52,000	4,654
1997/98(97)	35,351	2.35	83,095	670	24,519	48,889	57,455	6,445
1998/99(98)	35,275	2.39	84,365	684	22,721	47,814	57,993	10,780
1999/00(99)	37,149	2.22	82,315	759	27,395	47,891	57,474	8,985
2000/01(00)	36,805	2.31	84,891	817	27,976	49,066	58,897	7,820
2001/02(01)	37,323	2.41	89,832	653	29,966	50,622	61,466	6,873
2002/03(02)	36,284	2.31	83,935	550	29,433	47,494	56,090	5,835
2003/04(03)	36,041	2.13	76,599	503	25,118	45,528	53,667	4,152
2004/05(04)	36,810	2.62	96,589	629	28,471	48,944	59,775	13,124
MAJOR PROTEIN MEALS								
1995/96(95)	-	-	32,294	1,048	5,687	-	27,665	252
1996/97(96)	-	-	33,772	1,025	6,598	-	28,222	229
1997/98(97)	-	-	37,422	1,355	8,700	-	30,007	299
1998/99(98)	-	-	36,799	1,206	6,716	-	31,255	333
1999/00(99)	-	-	36,698	1,224	6,878	-	31,080	297
2000/01(00)	-	-	38,216	1,166	7,258	-	32,025	396
2001/02(01)	-	-	38,891	1,059	7,061	-	32,998	287
2002/03(02)	-	-	36,608	1,188	5,657	-	32,182	244
2003/04(03)	-	-	35,142	1,843	4,162	-	32,794	273
2004/05(04)	-	-	37,738	1,426	5,372	-	33,771	294
MAJOR VEGETABLE AND MARINE OILS								
1995/96(95)	-	-	8,169	1,279	977	-	8,059	1,151
1996/97(96)	-	-	8,333	1,554	1,515	-	8,580	943
1997/98(97)	-	-	9,505	1,644	2,044	-	9,064	984
1998/99(98)	-	-	9,430	1,435	1,639	-	9,211	999
1999/00(99)	-	-	9,371	1,528	1,134	-	9,551	1,213
2000/01(00)	-	-	9,508	1,683	1,048	-	9,748	1,608
2001/02(01)	-	-	9,644	1,629	1,550	-	10,026	1,305
2002/03(02)	-	-	9,183	1,534	1,244	-	9,883	895
2003/04(03)	-	-	8,741	1,932	738	-	10,058	772
2004/05(04)	-	-	9,408	1,867	814	-	10,367	866

NOTE: MAJOR OILSEEDS INCLUDE COTTONSEED, PEANUTS, RAPESEED, SOYBEANS, AND SUNFLOWERSEED
 MAJOR PROTEIN MEALS INCLUDE COPRA, COTTONSEED, FISH, PEANUT, RAPESEED, SOYBEAN, AND SUNFLC
 MAJOR VEGETABLE AND FISH OILS INCLUDE COCONUT, COTTONSEED, FISH, OLIVE,
 PALM, PALM KERNEL, PEANUT, RAPESEED, SOYBEAN, AND SUNFLOWERSEED.

SOURCE: COUNSELOR AND ATTACHE REPORTS, FOREIGN AGRICULTURAL SERVICE
 OFFICIAL STATISTICS, USDA ESTIMATES COTTON, OILSEEDS, TOBACCO
 FEBRUARY

TABLE 11
 UNITED STATES: SOYBEANS AND PRODUCTS SUPPLY AND DISTRIBUTION
 LOCAL MARKETING YEARS
 (1000 METRIC TONS)

	AREA HA	YIELD MT/HA	PROD	IMPORTS	EXPORTS	CRUSH	DOMESTIC CONS	ENDING STOCKS
SOYBEAN (SEP-AUG)								
1995/96(95)	24,906	2.38	59,174	121	23,108	37,273	40,306	4,993
1996/97(96)	25,637	2.53	64,780	242	24,110	39,080	42,317	3,588
1997/98(97)	27,968	2.62	73,176	135	23,760	43,464	47,701	5,438
1998/99(98)	28,507	2.62	74,598	82	21,898	43,262	48,736	9,484
1999/00(99)	29,318	2.46	72,224	114	26,537	42,927	47,388	7,897
2000/01(00)	29,303	2.56	75,055	97	27,103	44,625	49,203	6,743
2001/02(01)	29,532	2.66	78,672	63	28,948	46,259	50,867	5,663
2002/03(02)	29,339	2.56	75,010	127	28,423	43,948	47,524	4,853
2003/04(03)	29,330	2.28	66,778	151	24,089	41,631	44,634	3,059
2004/05(04)	29,930	2.86	85,484	136	27,488	45,042	49,212	11,979
SOYBEAN MEAL (OCT-SEP)								
1995/96(95)	-	-	29,508	68	5,446	-	24,140	193
1996/97(96)	-	-	31,035	92	6,344	-	24,785	191
1997/98(97)	-	-	34,633	51	8,464	-	26,213	198
1998/99(98)	-	-	34,285	90	6,461	-	27,812	300
1999/00(99)	-	-	34,102	45	6,652	-	27,529	266
2000/01(00)	-	-	35,730	46	6,988	-	28,706	348
2001/02(01)	-	-	36,552	130	6,811	-	30,001	218
2002/03(02)	-	-	34,650	151	5,461	-	29,358	200
2003/04(03)	-	-	32,953	245	3,941	-	29,266	191
2004/05(04)	-	-	35,629	150	5,171	-	30,572	227
SOYBEAN OIL (OCT-SEP)								
1995/96(95)	-	-	6,913	43	450	-	6,108	914
1996/97(96)	-	-	7,145	24	922	-	6,471	690
1997/98(97)	-	-	8,229	27	1,397	-	6,922	627
1998/99(98)	-	-	8,202	37	1,076	-	7,101	689
1999/00(99)	-	-	8,085	37	624	-	7,283	904
2000/01(00)	-	-	8,355	33	636	-	7,401	1,255
2001/02(01)	-	-	8,572	21	1,143	-	7,635	1,070
2002/03(02)	-	-	8,360	21	1,027	-	7,748	676
2003/04(03)	-	-	7,748	139	424	-	7,651	488
2004/05(04)	-	-	8,514	48	590	-	7,847	613

SOURCE: COUNSELOR AND ATTACHE REPORTS,
 OFFICIAL STATISTICS, USDA ESTIMATES

FOREIGN AGRICULTURAL SERVICE
 COTTON, OILSEEDS, TOBACCO
 and SEEDS DIVISION

DATE: February 2005

TABLE 12
BRAZIL: SOYBEANS AND PRODUCTS SUPPLY AND DISTRIBUTION
LOCAL MARKETING YEARS
(1,000 METRIC TONS)

	AREA HA	YIELD MT/HA	PROD	IMPORTS	EXPORTS	CRUSH	DOMESTIC CONS	ENDING STOCKS
SOYBEANS (FEB-JAN)								
1996/97(95)	10,950	2.21	24,150	1,300	3,633	20,083	21,631	834
1997/98(96)	11,800	2.31	27,300	1,450	8,327	18,944	20,658	599
1998/99(97)	13,000	2.50	32,500	634	9,325	21,832	23,586	822
1999/2000(98)	12,900	2.43	31,300	616	8,912	21,645	23,423	403
2000/01(99)	13,600	2.55	34,700	794	11,779	21,578	23,502	616
2001/02(00)	13,934	2.83	39,500	854	15,521	22,773	24,992	457
2002/03(01)	16,350	2.66	43,500	1,100	16,074	25,843	28,302	681
2003/04(02)	18,448	2.82	52,000	1,124	19,987	27,796	30,689	3,129
2004/05(03)	21,475	2.45	52,600	350	19,750	29,050	32,200	4,129
2005/06(04)	23,000	2.74	63,000	222	24,286	33,609	37,367	5,698
SOYBEAN MEAL (FEB-JAN)								
1996/97(95)	-	-	15,841	100	10,900	-	5,300	381
1997/98(96)	-	-	14,863	300	9,800	-	5,400	344
1998/99(97)	-	-	17,235	138	10,850	-	6,535	332
1999/2000(98)	-	-	17,000	175	10,150	-	6,900	457
2000/01(99)	-	-	16,900	120	9,875	-	7,125	477
2001/02(00)	-	-	17,699	230	10,852	-	7,194	360
2002/03(01)	-	-	20,380	375	12,825	-	7,800	490
2003/04(02)	-	-	21,950	295	13,222	-	8,750	763
2004/05(03)	-	-	22,920	200	14,630	-	8,784	469
2005/06(04)	-	-	26,518	200	17,180	-	9,200	807
SOYBEAN OIL (FEB-JAN)								
1996/97(95)	-	-	3,778	175	1,320	-	2,659	198
1997/98(96)	-	-	3,427	200	1,075	-	2,582	168
1998/99(97)	-	-	3,951	200	1,418	-	2,682	219
1999/2000(98)	-	-	3,918	240	1,463	-	2,694	220
2000/01(99)	-	-	3,906	111	1,135	-	2,786	316
2001/02(00)	-	-	4,119	100	1,620	-	2,765	150
2002/03(01)	-	-	4,674	140	2,100	-	2,714	150
2003/04(02)	-	-	5,031	47	2,410	-	2,668	150
2004/05(03)	-	-	5,258	50	2,655	-	2,710	93
2005/06(04)	-	-	6,079	40	3,237	-	2,825	150

SOURCE: COUNSELOR AND ATTACHE REPORTS,
OFFICIAL STATISTICS, USDA ESTIMATES

DATE: February 2005

FOREIGN AGRICULTURAL SERVICE
COTTON, OILSEEDS, TOBACCO
and SEEDS DIVISION

TABLE 13
 ARGENTINA: SOYBEANS AND PRODUCTS SUPPLY AND DISTRIBUTION
 LOCAL MARKETING YEARS
 (1,000 METRIC TONS)

	AREA HA	YIELD MT/HA	PROD	IMPORTS	EXPORTS	CRUSH	DOMESTIC CONS	ENDING STOCKS
SOYBEANS (APR-MAR)								
1996/97(95)	5,980	2.08	12,430	10	2,014	9,927	10,515	276
1997/98(96)	6,200	1.81	11,200	650	725	10,423	10,993	408
1998/99(97)	6,954	2.80	19,500	1,250	3,231	16,750	17,362	565
1999/2000(98)	8,165	2.45	20,000	790	3,400	17,100	17,826	129
2000/01(99)	8,583	2.47	21,200	400	4,100	16,500	17,512	117
2001/02(00)	10,400	2.67	27,800	420	7,475	19,500	20,720	142
2002/03(01)	11,400	2.63	30,000	675	6,243	22,390	23,678	896
2003/04(02)	12,600	2.82	35,500	400	8,910	24,723	26,256	1,630
2004/05(03)	14,000	2.43	34,000	300	7,215	24,298	25,850	2,865
2005/06(04)	14,200	2.75	39,000	350	8,700	26,842	28,494	5,021
SOYBEAN MEAL (APR-MAR)								
1996/97(95)	-	-	7,950	0	7,781	-	195	489
1997/98(96)	-	-	8,350	0	8,350	-	200	289
1998/99(97)	-	-	13,400	0	12,950	-	205	534
1999/2000(98)	-	-	13,500	0	13,190	-	210	634
2000/01(99)	-	-	13,125	0	13,135	-	215	409
2001/02(00)	-	-	15,500	0	15,450	-	209	250
2002/03(01)	-	-	17,650	0	17,350	-	220	330
2003/04(02)	-	-	19,486	0	19,219	-	250	347
2004/05(03)	-	-	19,050	0	18,887	-	260	250
2005/06(04)	-	-	21,253	0	20,583	-	270	650
SOYBEAN OIL (APR-MAR)								
1996/97(95)	-	-	1,717	0	1,634	-	100	50
1997/98(96)	-	-	1,960	0	1,860	-	100	50
1998/99(97)	-	-	2,970	0	2,725	-	102	193
1999/2000(98)	-	-	3,150	0	3,060	-	103	180
2000/01(99)	-	-	3,030	0	2,935	-	104	171
2001/02(00)	-	-	3,625	0	3,595	-	121	80
2002/03(01)	-	-	4,125	0	3,975	-	125	105
2003/04(02)	-	-	4,554	0	4,430	-	130	99
2004/05(03)	-	-	4,435	0	4,330	-	130	74
2005/06(04)	-	-	4,947	0	4,676	-	145	200

SOURCE: COUNSELOR AND ATTACHE REPORTS,
 OFFICIAL STATISTICS, USDA ESTIMATES
 DATE: February 2005

FOREIGN AGRICULTURAL SERVICE
 COTTON, OILSEEDS, TOBACCO
 and SEEDS DIVISION

TABLE 14
 ARGENTINA: SUNFLOWERSEED AND PRODUCTS SUPPLY AND DISTRIBUTION
 LOCAL MARKETING YEARS
 (1,000 METRIC TONS)

	AREA HA	YIELD MT/HA	PROD	IMPORTS	EXPORTS	CRUSH	DOMESTIC CONS	ENDING STOCKS
SUNFLOWERSEED (MAR-FEB)								
1996/97(95)	3,200	1.75	5,600	0	550	5,000	5,060	111
1997/98(96)	2,900	1.86	5,400	0	100	5,175	5,235	176
1998/99(97)	3,331	1.65	5,500	0	453	4,975	5,035	188
1999/2000(98)	3,909	1.82	7,100	0	910	6,195	6,255	123
2000/01(99)	3,477	1.73	6,000	0	283	5,200	5,260	580
2001/02(00)	1,886	1.62	3,050	2	79	3,450	3,492	61
2002/03(01)	2,015	1.91	3,844	2	356	3,400	3,447	104
2003/04(02)	2,350	1.57	3,700	5	213	3,029	3,086	510
2004/05(03)	1,830	1.75	3,200	28	75	2,900	2,961	702
2005/06(04)	2,000	1.70	3,400	2	200	3,150	3,202	702
SUNFLOWERSEED MEAL (MAR-FEB)								
1996/97(95)	-	-	2,100	0	1,954	-	140	96
1997/98(96)	-	-	2,174	0	2,050	-	140	80
1998/99(97)	-	-	2,092	0	1,940	-	142	90
1999/2000(98)	-	-	2,573	0	2,420	-	150	93
2000/01(99)	-	-	2,160	0	1,950	-	175	128
2001/02(00)	-	-	1,435	0	1,280	-	189	94
2002/03(01)	-	-	1,427	0	1,160	-	272	89
2003/04(02)	-	-	1,274	0	1,123	-	145	95
2004/05(03)	-	-	1,220	0	995	-	230	90
2005/06(04)	-	-	1,325	0	1,065	-	255	95
SUNFLOWERSEED OIL (MAR-FEB)								
1996/97(95)	-	-	2,000	0	1,510	-	480	91
1997/98(96)	-	-	2,070	0	1,610	-	480	71
1998/99(97)	-	-	1,990	0	1,510	-	480	71
1999/2000(98)	-	-	2,450	0	1,835	-	561	125
2000/01(99)	-	-	2,140	0	1,634	-	560	71
2001/02(00)	-	-	1,440	0	913	-	543	55
2002/03(01)	-	-	1,450	0	1,157	-	298	50
2003/04(02)	-	-	1,294	0	897	-	402	45
2004/05(03)	-	-	1,235	0	930	-	310	40
2005/06(04)	-	-	1,335	0	950	-	385	40

SOURCE: COUNSELOR AND ATTACHE REPORTS,
 OFFICIAL STATISTICS, USDA ESTIMATES

DATE: February 2005

FOREIGN AGRICULTURAL SERVICE
 COTTON, OILSEEDS, TOBACCO
 and SEEDS DIVISION

TABLE 15
EUROPEAN UNION (25):
OILSEEDS AND PRODUCTS SUPPLY AND DISTRIBUTION
(1,000 METRIC TONS)

	2000/01	2001/02	2002/03	PRELIM 2003/04	FORECAST 2004/05
OILSEED PRODUCTION					
RAPESEED	11,288	11,483	11,652	11,085	14,631
SUNFLOWERSEED	3,980	3,836	3,713	3,924	3,697
SOYBEANS	1,188	1,309	888	711	799
OTHER	761	778	652	590	735
TOTAL	17,217	17,406	16,905	16,310	19,862
PROTEIN MEAL CONSUMPTION 1/					
SOYBEAN	31,212	32,984	32,994	32,666	33,568
SUNFLOWERSEED	4,827	3,935	4,100	4,595	4,055
RAPESEED	6,315	6,122	6,226	6,229	7,274
CORN GLUTEN FEED/MEAL 2/	4,527	4,476	3,655	3,764	3,850
OTHER	5,263	4,782	4,621	4,608	4,667
TOTAL 3/	47,617	47,823	47,941	48,098	49,564
TOTAL SME 4/	46,851	47,293	46,846	47,032	48,211
OIL CONSUMPTION 1/					
SOYBEAN	2,133	2,283	2,239	2,060	2,073
OLIVE	1,830	1,918	1,941	1,969	1,942
SUNFLOWERSEED	2,151	2,333	2,247	2,334	2,211
RAPESEED	3,950	3,901	4,009	4,129	4,698
OTHER	4,012	4,433	4,437	4,586	4,796
TOTAL	14,076	14,868	14,873	15,078	15,720
IMPORTS(EX.INTRA TRADE) 5/					
SOYBEANS	17,448	18,539	16,872	14,632	15,659
SOYBEAN MEAL	18,327	19,670	20,329	21,857	22,250
SUNFLOWERSEED	1,719	868	1,002	1,467	810
EXPORTS(EX.INTRA TRADE) 5/ 6/					
SOYBEAN MEAL	255	330	340	391	400
SOYBEAN OIL	889	889	705	534	626
RAPESEED OIL	213	273	257	232	344

1/ AN AGGREGATE OF DIFFERENT MARKETING YEARS

2/ BASED ON EC IMPORT DATA ONLY

3/ CORN GLUTEN FEED/MEAL NOT INCLUDED

4/ 44-PERCENT SOYBEAN MEAL EQUIVALENT, INCLUDING CORN GLUTEN FEED/MEAL.

5/ OCTOBER-SEPTEMBER YEARS

SOURCE: COUNSELOR AND ATTACHE REPORTS
OFFICIAL STATISTICS
USDA ESTIMATES

DATE: February 2005

FOREIGN AGRICULTURAL SERVICE
COTTON, OILSEEDS, TOBACCO
and SEEDS DIVISION

TABLE 16
RUSSIA:
OILSEEDS AND PRODUCTS SUPPLY AND DISTRIBUTION
(1,000 METRIC TONS)

	2000/01	2001/02	2002/03	PRELIM 2003/04	FORECAST 2004/05
OILSEED PRODUCTION					
RAPESEED	148	140	115	192	120
SOYBEANS	342	350	423	393	450
SUNFLOWERSEED	3,915	2,670	3,685	4,850	4,750
TOTAL	4,405	3,160	4,223	5,435	5,320
PROTEIN MEAL CONSUMPTION					
SOYBEAN	500	624	620	645	691
SUNFLOWERSEED	995	938	1,098	1,082	1,155
RAPESEED	50	48	53	65	60
FISH	262	201	184	150	145
TOTAL 1/ TOTAL SME 2/	1,807 1,854	1,811 1,834	1,955 1,960	1,942 1,930	2,051 2,034
OIL CONSUMPTION					
SOYBEAN	485	624	299	165	241
COTTONSEED	1	1	1	1	1
SUNFLOWERSEED	1,303	1,200	1,322	1,602	1,575
RAPESEED	80	59	45	50	50
OTHER	230	312	346	399	408
TOTAL 1/	2,099	2,196	2,013	2,217	2,275
IMPORTS 3/					
SOYBEANS	22	65	15	1	25
SOYBEAN MEAL	165	304	280	353	365
SUNFLOWERSEED OIL	236	175	192	178	160
EXPORTS 3/					
SUNFLOWERSEED	730	54	200	350	325
SOYBEANS	13	0	0	5	10
SUNFLOWERSEED OIL	193	30	180	136	170
FISHMEAL	5	4	1	0	0

1/ AN AGGREGATE OF DIFFERENT MARKETING YEARS

2/ 44-PERCENT SOYBEAN MEAL EQUIVALENT

3/ ASSORTED MARKETING YEARS

SOURCE: COUNSELOR AND ATTACHE REPORTS
OFFICIAL STATISTICS
USDA ESTIMATES

FOREIGN AGRICULTURAL SERVICE
COTTON, OILSEEDS, TOBACCO
and SEEDS DIVISION

DATE: February 2005

TABLE 17
CHINA:
OILSEEDS AND PRODUCTS SUPPLY AND DISTRIBUTION
(1,000 METRIC TONS)

	2000/01	2001/02	2002/03	PRELIM 2003/04	FORECAST 2004/05
OILSEED PRODUCTION					
COTTONSEED	7,960	9,560	8,850	8,740	11,365
PEANUTS	14,437	14,415	14,818	13,420	15,300
RAPESEED	11,381	11,331	10,552	11,420	12,000
SOYBEANS	15,400	15,410	16,510	15,400	18,000
SUNFLOWERSEED	1,954	1,478	1,946	1,743	1,850
TOTAL	51,132	52,194	52,676	50,723	58,515
PROTEIN MEAL CONSUMPTION					
SOYBEAN	15,037	15,269	20,205	19,562	22,040
COTTONSEED	2,604	3,182	2,947	2,989	3,578
RAPESEED	7,190	6,983	6,123	7,068	7,560
PEANUT	2,644	2,644	2,794	2,733	2,825
OTHER	1,918	1,811	1,681	1,965	1,698
TOTAL 1/	29,393	29,889	33,750	34,317	37,701
TOTAL SME 2/	27,747	28,227	32,278	32,702	35,720
OIL CONSUMPTION					
SOYBEAN	3,542	4,137	6,389	7,174	7,595
COTTONSEED	900	1,116	1,009	1,005	1,245
PALM	2,028	2,470	3,525	3,710	4,060
RAPESEED	4,307	4,213	3,658	4,363	4,760
PEANUT	2,116	2,149	2,242	2,100	2,247
SUNFLOWER	335	230	313	329	327
OTHER	292	230	272	264	325
TOTAL 1/	13,520	14,545	17,408	18,945	20,559
IMPORTS 3/					
SOYBEANS	13,245	10,385	21,417	16,933	22,500
RAPESEED	2,361	775	51	419	950
FISHMEAL	904	960	803	1,128	870
SOYMEAL	100	20	0	19	70
PALM OIL	2,028	2,475	3,531	3,710	4,060
SOYBEAN OIL	355	551	1,712	2,729	2,420
RAPESEED OIL	200	61	127	368	415
EXPORTS 3/					
SOYBEANS	208	300	265	319	250
PEANUTS	823	906	1,092	821	1,000
SOYBEAN MEAL	113	1,051	795	647	820
COTTONSEED MEAL	96	168	110	48	175
RAPESEED MEAL	610	207	216	157	240
RAPESEED OIL	68	28	7	5	5

1/ AN AGGREGATE OF DIFFERENT MARKETING YEARS

2/ 44-PERCENT SOYBEAN MEAL EQUIVALENT

3/ ASSORTED MARKETING YEARS

SOURCE: COUNSELOR AND ATTACHE REPORTS
OFFICIAL STATISTICS
USDA ESTIMATES

DATE: February 2005

FOREIGN AGRICULTURAL SERVICE
COTTON, OILSEEDS, TOBACCO
and SEEDS DIVISION

TABLE 18
INDIA:
OILSEEDS AND PRODUCTS SUPPLY AND DISTRIBUTION
(1,000 METRIC TONS)

	2000/01	2001/02	2002/03	PRELIM 2003/04	FORECAST 2004/05
OILSEED PRODUCTION					
COTTONSEED	4,900	5,100	4,400	5,859	6,790
PEANUTS	5,700	7,600	5,200	7,700	7,500
RAPESEED	3,725	4,500	3,600	6,800	6,400
SOYBEANS	5,250	5,400	4,000	6,800	6,500
SUNFLOWERSEED	1,250	1,450	1,625	1,700	1,750
TOTAL	20,825	24,050	18,825	28,859	28,940
PROTEIN MEAL CONSUMPTION					
SOYBEAN	1,224	1,248	1,502	1,122	2,300
COTTONSEED	1,740	1,798	1,599	1,980	2,299
RAPESEED	2,201	1,972	1,451	2,756	2,790
PEANUT	1,659	2,135	1,547	1,997	2,121
OTHER	707	778	846	866	892
TOTAL 1/	7,531	7,931	6,945	8,721	10,402
TOTAL SME 2/	6,608	7,118	6,242	7,622	9,243
OIL CONSUMPTION					
SOYBEAN	2,020	2,387	1,946	1,782	2,030
COTTONSEED	570	557	507	613	713
PALM	4,100	3,500	4,100	3,673	3,815
RAPESEED	1,530	1,556	1,330	2,165	2,145
PEANUT	1,414	1,861	1,369	1,745	1,803
OTHER	1,497	1,163	1,293	1,260	1,279
TOTAL 1/	11,131	11,024	10,545	11,238	11,785
IMPORTS 3/					
SOYBEANS	0	0	0	0	0
SUNFLOWERSEED OIL	455	50	101	87	70
PALM OIL	4,000	3,400	3,950	3,550	3,850
SOYBEAN OIL	1,400	1,550	1,255	759	1,050
RAPESEED OIL	50	5	50	0	10
EXPORTS 3/					
PEANUTS	121	106	75	200	105
PEANUT MEAL	20	112	2	219	120
SOYBEAN MEAL	2,350	2,450	1,225	3,310	2,100
RAPESEED MEAL	50	421	449	620	500

1/ AN AGGREGATE OF DIFFERENT MARKETING YEARS

2/ 44-PERCENT SOYBEAN MEAL EQUIVALENT

3/ ASSORTED MARKETING YEARS

SOURCE: COUNSELOR AND ATTACHE REPORTS
OFFICIAL STATISTICS
USDA ESTIMATES

DATE: February 2005

FOREIGN AGRICULTURAL SERVICE
COTTON, OILSEEDS, TOBACCO
and SEEDS DIVISION

TABLE 19
MALAYSIA: PALM OIL SUPPLY AND DISTRIBUTION
(1,000 METRIC TONS)

YEAR	BEGINNING STOCKS	PRODUCTION 1/	EXPORTS 6/	CONSUMPTION 2/	ENDING STOCKS
1988/89	684	5,636	4,670	763	887
1989/90	887	6,412	5,520	882	912
1990/91	912	6,033	5,436	915	817
1991/92	817	6,222	5,552	1,020	656
1992/93	656	7,125	5,740	1,274	1,026
1993/94	1,026	7,100	6,500	1,227	627
1994/95	627	7,771	6,634	1,170	646
1995/96	646	8,264	6,660	1,370	894
1996/97	894	9,005	7,544	1,458	907
1997/98	907	8,508	7,421	1,366	719
1998/99					
OCT-DEC		2,149	1,794		
JAN-MAR		1,771	1,561		
APR-JUN		2,865	2,105		
JUL-SEP		2,973	2,433		
TOTAL	719	9,758	8,100	1,459	1,208
1999/2000					
OCT-DEC		2,943	2,520		
JAN-MAR		2,225	2,030		
APR-JUN		2,415	1,875		
JUL-SEP		2,908	2,050		
TOTAL	1,208	10,491	8,845	1,566	1,368
2000/2001					
OCT-DEC		3,290	2,567		
JAN-MAR		2,836	2,562		
APR-JUN		2,832	2,557		
JUL-SEP		2,979	2,337		
TOTAL	1,368	11,937	10,475	1,675	1,216
2001/2002					
OCT-DEC		3,155	2,647		
JAN-MAR		2,603	2,238		
APR-JUN		2,732	2,651		
JUL-SEP		3,368	2,629		
TOTAL	1,216	11,857	10,500	1,775	1,149
2002/2003					
OCT-DEC		3,206	2,925		
JAN-MAR		2,614	2,450		
APR-JUN		3,482	3,068		
JUL-SEP		3,879	3,596		
TOTAL	1,149	13,180	11,650	2,074	975
2003/2004					
OCT-DEC		3,380	3,004		
JAN-MAR		2,678	2,637		
APR-JUN		3,278	2,785		
JUL-SEP		4,080	3,636		
TOTAL 4/	975	13,416	11,765	1,959	1,332
2004/2005					
OCT-DEC		3,936	3,410		
JAN-MAR		3,000	3,190		
APR-JUN					
JUL-SEP					
TOTAL 5/	1,332	14,500	12,600	2,252	1,480

1/TOTALS ARE BASED ON AN OCTOBER-SEPTEMBER BASIS.

2/ UTILIZATION INCLUDES EXPORTS OF FURTHER PROCESSED PRODUCTS AND REFINING LOSSES AND THEREFORE IS HIGHER THAN THE ACTUAL LEVEL.

3/ QUARTERLY EXPORT DATA MAY NOT ADD TO YEAR TOTAL BECAUSE QUARTERLY IMPORT DATA IS NOT AVAILABLE.

4/ PRELIMINARY

5/ FORECAST

6/ NET EXPORTS: EXCLUDING PALM AND FATTY ACID DISTILLATES.

SOURCE: COUNSELOR AND ATTACHE REPORTS,
OFFICIAL STATISTICS, USDA ESTIMATES.

FOREIGN AGRICULTURAL SERVICE
COTTON, OILSEEDS, TOBACCO
and SEEDS DIVISION

PRICES

TABLE 20.
OILSEED PRICES
(US DOLLARS PER METRIC TON)

YEAR BEG. OCT.1	SOYBEANS					PEANUT		SUNFLOWERSEEDRAPESEED			COPRA	LINSEED
	U.S. 1/	U.S. 2/	BRAZIL 3/	ARG 4/	ROTT 5/	U.S. 6/	ROTT 7/	U.S. 8/	ROTT 9/	HAMB 10/	ROTT 11/	ROTT 12/
OCT-SEP AVG. 93/94-02/03	210	215	224	219	248	559	913	235	269	258	372	259
1993/94	233	234	235	231	259	668	1088	284	317	284	388	232
1994/95	205	208	217	214	248	609	856	236	309	289	432	261
1995/96	263	273	284	277	304	635	986	254	312	298	487	288
1996/97	274	278	285	288	307	603	926	258	266	284	452	298
1997/98	230	233	240	231	259	578	1055	256	309	296	398	302
1998/99	176	177	184	179	225	563	847	223	257	227	468	235
1999/00	173	175	183	180	208	544	820	168	214	190	357	193
2000/01	167	169	180	175	200	582	888	167	219	202	208	217
2001/02	170	174	183	179	203	389	700	238	287	220	245	256
2002/03	209	232	217	238	267	415	963	265	286	285	287	309
2003/04												
OCT.	243	262	276	277	310	408	930	251	291	311	297	327
NOV	259	275	286	294	327	406	973	256	306	323	335	344
DEC	263	279	278	294	332	432	1000	256	324	331	400	332
JAN.	270	297	288	309	350	454	1000	267	341	341	388	343
FEB.	304	315	287	319	368	417	1000	282	366	349	415	350
MAR.	341	358	318	326	413	410	1000	300	347	343	450	359
APR.	353	359	322	326	358	437	970	298	349	359	500	393
MAY	351	346	295	298	316	454	970	302	340	366	498	376
JUN.	334	323	263	267	295	448	970	295	307	286	471	407
JUL.	311	291	243	246	279	384	970	293	298	277	445	355
AUG.	251	228	238	234	265	NA	968	300	291	256	440	330
SEP.	215	200	230	228	260	388	960	284	289	265	448	420
AVERAGE	291	294	277	285	323	422	976	282	321	317	424	361
2004/05												
OCT.	204	184	219	217	249	388	960	273	288	257	447	432
NOV	197	190	217	218	260	388	960	287	322	275	449	525
DEC	200	196	219	223	265	388	954	298	340	282	449	495
*JAN.	195	194	218	216	262	388	940	304	327	262	430	520
FEB.												
MAR.												
APR.												
MAY												
JUN.												
JUL.												
AUG.												
SEP.												
AVERAGE	199	191	218	219	259	388	954	291	319	269	444	493

1/ U.S. FARM PRICE; USDA. 2/ U.S. NO.1 YELLOW CASH CENTRAL ILLINOIS; WALL STREET JOURNAL.

3/ RIO GRANDE, BRAZIL FOB; SAFRAS AND MERCADO. OR FOB PARANAGUA REUTERS 4/ ARGENTINA FOB B.AIRES;

SAFRAS AND MERCADO. OR FOB UP RIVER; REUTERS 5/ ROTTERDAM CIF; VARIOUS SOURCES; OIL WORLD.

6/ U.S. FARM PRICE INSHELL USDA. 7/ ROTT CIF; US RUNNERS 40/50%, SHELLED BASIS, OIL WORLD.

8/ U.S. FARM PRICE; USDA. 9/ ROTTERDAM CIF; EC LOWER RHINE (BEGINNING SEP 93) U.S./CANADA PRIOR; OIL WORLD.

10/HAMBURG CIF; EUROPE "00" OIL; OIL WORLD. 11/ ROTTERDAM CIF; PHILIPPINES/INDONESIA; OIL WORLD

12/ ROTTERDAM CIF; CANADA NO.1; OIL WORLD.

DATE: FEBRUARY 2005

FOREIGN AGRICULTURAL SERVICE
COTTON, OILSEEDS, TOBACCO
and SEEDS DIVISION

PRICES

TABLE 21.
PROTEIN MEAL PRICES
(US DOLLARS PER METRIC TON)

YEAR BEG. OCT.1	SOYBEAN				COTTONSEED	SUNFLOWERSEED		PEANUT	FISH	RAPESEED	CORN
	U.S. 1/	BRAZIL 2/	ARG 3/	ROTT 4/	U.S. 5/	U.S. 6/	ROTT 7/	U.S. 8/	HAMB 9/	HAMB 10/	GLUTEN 11/
OCT-SEP AVG. 93/94-02/03	205	199	179	201	161	98	113	169	516	142	112
1993/94	213	182	174	202	181	104	127	215	364	152	127
1994/95	179	172	151	184	123	69	103	142	448	134	128
1995/96	260	256	233	256	210	136	151	223	587	180	159
1996/97	289	289	257	278	212	122	138	256	579	175	127
1997/98	204	201	174	197	159	93	103	231	686	139	99
1998/99	153	150	130	150	121	72	76	110	442	105	96
1999/00	185	182	159	180	141	83	102	122	407	124	91
2000/01	191	187	168	188	158	100	118	134	459	141	95
2001/02	180	174	157	174	146	95	110	122	592	129	92
2002/03	200	163	152	197	161	101	106	140	598	139	108
2003/04											
OCT.	248	219	191	265	180	114	162	162	624	187	142
NOV.	267	229	209	284	201	130	189	177	648	221	162
DEC.	255	219	195	277	204	124	173	180	656	209	158
JAN.	278	224	182	293	207	128	152	180	682	201	158
FEB.	284	206	186	292	213	127	137	186	685	185	155
MAR.	332	235	210	321	226	138	154	221	663	191	156
APR.	344	246	223	332	242	144	165	249	652	199	154
MAY	331	227	205	299	224	135	156	262	643	196	139
JUN.	315	218	186	254	204	120	134	225	645	158	124
JUL.	313	189	168	227	196	122	127	220	638	125	116
AUG.	226	159	146	217	172	96	121	158	624	133	118
SEP.	193	166	153	214	157	91	123	147	625	127	122
AVERAGE	282	211	188	273	202	122	149	197	649	178	142
2004/05											
OCT.	171	158	144	210	140	83	111	111	629	116	116
NOV	170	153	138	213	131	108	112	109	643	122	120
DEC	178	158	143	213	129	108	125	103	654	134	128
*JAN.	184	152	151	222	124	104	122	103	628	126	135
FEB.											
MAR.											
APR.											
MAY											
JUN.											
JUL.											
AUG.											
SEP.											
AVERAGE	176	155	144	215	131	101	118	107	639	125	125

1/ DECATUR, AVERAGE WHOLESALE 48% PROTEIN; USDA. 2/ RIO GRANDE, BRAZIL FOB; BULK RATE 45-46% PROTEIN; SAFRAS AND MERCADO; OR REUTERS. 3/ ARG. PELLETS, FOB B.AIRES; SAFRAS AND MERCADO; OR FOB ARGENTINA; REUTERS. 4/ HAMBURG FOB EXMILL; OIL WORLD. 5/ MEMPHIS FOB; 41% PROTEIN SOLVENT EXTRACTION; USDA. 6/ MINNEAPOLIS FOB; 32% PROTEIN; USDA. 7/ ROTTERDAM CIF; ARGENTINA-URUGUAY PELLET 37-38%; OIL WORLD. 8/ SOUTHEAST MILLS FOB. 9/HAMBURG CIF; ANY ORIGIN 64-65% PROTEIN; OIL WORLD. 10/ HAMBURG FOB; EX-MILL 34% PROTEIN; OIL WORLD. 11/ ROTTERDAM CIF; PELLETS 23-24% PROTEIN; OIL WORLD

DATE: FEBRUARY 2005

FOREIGN AGRICULTURAL SERVICE
COTTON, OILSEEDS, TOBACCO
and SEEDS DIVISION

PRICES

TABLE 22.
VEGETABLE OIL PRICES
(US DOLLARS PER METRIC TON)

YEAR BEGINNING.	SOYBEANS				COTTONSEED		SUNFLOWERSEED		PEANUT		PALM	RAPESEED	COCONUT	CORN
	U.S. 1/	BRAZIL 2/	ARG 3/	ROTT 4/	U.S. 5/	ROTT 6/	U.S. 7/	ROTT 8/	U.S. 9/	ROTT 10/	MALAY 11/	ROTT 12/	ROTT 13/	U.S. 14/
OCT.1														
OCT-SEP AVG. 93/94-02/03	475	476	478	509	575	620	536	579	903	886	453	521	573	518
1993/94	595	539	543	580	668	749	685	627	952	973	445	578	564	582
1994/95	606	608	623	642	644	671	619	691	977	1005	651	637	656	584
1995/96	545	537	533	575	585	613	560	617	888	928	523	566	746	556
1996/97	496	514	515	536	564	588	499	545	963	959	526	539	693	530
1997/98	569	608	614	633	636	693	595	730	1080	964	601	637	625	638
1998/99	438	452	453	483	602	632	444	560	876	801	486	482	748	558
1999/00	344	328	332	356	474	496	365	413	780	744	309	359	539	393
2000/01	311	295	295	336	352	428	350	428	768	685	235	372	323	299
2001/02	363	376	376	412	396	445	513	587	716	659	329	451	388	422
2002/03	486	489	491	534	832	883	731	592	1034	1139	421	588	449	621
2003/04														
OCT.	604	577	558	624	726	799	722	615	1358	1293	473	616	487	595
NOV	612	583	578	625	711	803	697	628	1394	1149	506	619	515	608
DEC	651	594	559	638	733	802	705	660	1422	1148	503	646	583	633
JAN.	669	597	516	658	722	781	718	689	1433	1162	483	674	584	645
FEB.	729	642	523	689	754	842	749	731	1360	1194	526	702	642	665
MAR.	764	632	644	691	770	852	770	712	1323	1236	544	685	685	674
APR.	754	604	606	671	760	820	767	696	1323	1237	533	708	736	669
MAY	720	561	561	632	718	763	768	684	1246	1209	500	741	716	669
JUN.	663	492	490	581	677	697	742	632	N/A	1150	429	670	658	625
JUL.	618	508	458	597	614	660	730	624	1235	1117	417	656	669	603
AUG.	573	514	514	610	558	616	729	632	1185	1111	421	669	627	565
SEP.	570	502	498	585	513	583	757	657	1213	1125	434	657	657	553
AVERAGE	661	567	542	633	688	752	738	663	1317	1178	481	670	630	625
2004/05														
OCT.	512	480	475	558	501	535	767	701	1213	1127	413	669	642	509
NOV	506	476	481	567	526	531	765	727	1213	1133	411	685	659	534
DEC	480	482	492	553	525	534	782	724	1227	1131	394	707	654	588
*JAN.	451	451	483	521	524	536	951	699	1235	1162	367	681	646	604
FEB.														
MAR.														
APR.														
MAY														
JUN.														
JUL.														
AUG.														
SEP.														
AVERAGE	487	472	483	550	519	534	816	713	1222	1138	396	686	650	559

1/ DECATUR; AVERAGE WHOLESALE TANK CRUDE; USDA. 2/ BRAZIL FOB; BULK RATE; SAFRAS AND MERCADO & REUTERS
3/ FOB, ARGENTINA; SAFRAS AND MERCADO & REUTERS 4/ DUTCH FOB; EX-MILL; OIL WORLD. 5/ VALLEY POINTS FOB.
TANK CARS CRUDE; USDA. 6/ ROTTERDAM CIF/FOB GULF SINCE 1994; US PBSY; OIL WORLD. 7/ MINNEAPOLIS FOB; USDA.
8/ EU FOB NW EURO PORTS; OIL WORLD. 9/ SOUTH EAST MILLS FOB; TANK CARS CRUDE; USDA. 10/ ROTTERDAM CIF; ANY ORIGIN; OIL WORLD.
11/ MALAYSIA FOB;RBD; PORLA & OILWORLD. 12/ ROTTERDAM, DUTCH, FOB EX-MILL; OIL WORLD. 13/ ROTTERDAM CIF; PHILIPPINES/INDONESIA;
OIL WORLD. 14/ ROTTERDAM; EX-TANK; OIL WORLD. 15/ DECATUR; CRUDE; AMS AND WALL STREET JOURNAL.

DATE: FEBRUARY 2005

FOREIGN AGRICULTURAL SERVICE
COTTON, OILSEEDS, TOBACCO
and SEEDS DIVISION

Table 23: GSM-102 Program Announcements and Sales Registrations 1/

Fiscal Year 2004 (Final)

(\$ Million)

Country (MAXIMUM CREDIT PERIOD)	Announced	Balance Available	Vegetable Oil	Protein Meal	Oilseeds
	FY 2004 Allocation	FY 2004 Allocation	Registered	Registered	Registered
Algeria (24 months)	100.0	74.9	0.0	14.4	0.0
Azerbaijan	15.0	15.0	0.0	0.0	0.0
Baltic Region (12 months)	15.0	15.0	0.0	0.0	0.0
Bulgaria (36 months)	12.0	12.0	0.0	0.0	0.0
Caribbean Region (36 months)	350.0	221.3	1.4	26.6	14.3
Central American Region (36 months)	300.0	26.0	0.5	49.2	14.6
Central Europe Region (36 months)	10.0	10.0	0.0	0.0	0.0
China/ Hong Kong Region (36 months)	300.0	231.8	0.0	0.0	61.1
East Africa (12 months)	5.0	5.0	0.0	0.0	0.0
Egypt (36 months)	100.0	100.0	0.0	0.0	0.0
India (36 months)	25.0	24.3	0.0	0.0	0.0
Indonesia (24 months)	200.0	50.4	0.0	70.1	0.0
Jordan (36 months)	40.0	31.6	0.0	0.0	0.0
Kazakhstan (12 months)	10.0	0.1	0.0	0.0	0.0
Korea (24 months)	615.0	169.2	0.0	0.0	133.7
Lebanon (36 months)	15.0	2.9	0.0	0.0	6.1
Mexico (24 months)	230.0	91.6	0.0	0.0	2.1
Morocco (36 months)	10.0	10.0	0.0	0.0	0.0
Pakistan (36 months)	95.0	95.0	0.0	0.0	0.0
Poland (36 months)	25.0	25.0	0.0	0.0	0.0
Romania (36 months)	25.0	20.6	0.0	0.0	3.7
Russia (24 months)	200.0	0.0	0.0	4.2	0.0
South American Region (36 months)	900.0	0.0	10.2	46.4	23.6
Southeast Asia Region (36 months)	300.0	148.3	0.0	52.1	51.4
Southeast Europe Region (24 months)	25.0	25.0	0.0	0.0	0.0
Southern Africa Region (36 months)	50.0	50.0	0.0	0.0	0.0
Sri Lanka	35.0	35.0	0.0	0.0	0.0
Tunisia (36 months)	30.0	30.0	0.0	0.0	0.0
Turkey (36 months)	400.0	0.7	35.5	29.3	49.9
Vietnam (12 months)	20.0	20.0	0.0	0.0	0.0
West Africa Region (12 months)	15.0	14.1	0.6	0.0	0.0
Yemen (24 months)	12.0	3.3	0.0	0.0	0.0
TOTAL FY 2004	4,484.0	1,558.0	48.2	277.9	360.5
TOTAL FY 2003			83.7	385.7	347.1
TOTAL FY 2002			124.8	360.9	621.8
TOTAL FY 2001			62.4	375.1	686.1
TOTAL FY 2000			94.6	207.1	744.1
TOTAL FY 1999			148.5	137.1	665.3
TOTAL FY 1998			144.0	186.0	625.7
TOTAL FY 1997			126.6	110.4	497.7

1/As of SEPTEMBER 30 2004

For Information Contact:
U.S. Department of Agriculture
Foreign Agricultural Service
Cotton, Oilseeds, Tobacco and Seeds Division

1400 Independence Ave. SW, Stop 1051,
Washington, D.C. 20250-1051
Telephone: (202) 720-7037
FAX: (202) 720-0965

J Lawrence Blum, Director
Patrick Packnett, Deputy Director: Analysis
Peter Burr: Group Leader

CIRCULAR PUBLICATION

Circular Coordinator	Thomas St. Clair	Area code (202)
Subscription Service	NTIS*	720-4549
		1-800-363-2068

GENERAL INFORMATION

Market Development Programs	Sharynne Nenon	720-2233
Oilseed Production	Paul Provance	720-0881
Trade Policy	Patrick Packnett	720-9519

COMMODITY SPECIFIC INFORMATION

Copra and Coconut Oil	Thomas St. Clair	720-4549
Cottonseed	Sigal Nissan	690-1203
Fishmeal	Matt King	690-0620
Olive Oil	William George	720-6234
Palm Oil and Palm Kernel	Thomas St. Clair	720-4549
Peanuts	William George	720-6234
Rapeseed	William George	720-6234
Soybeans	Matt King	690-0620
Sunflowerseed	Keith Scarse	720-0139

COUNTRY AND REGION SPECIFIC INFORMATION

Africa/Middle East	Sigal Nissan	690-1203
South/Southeast Asia	Thomas St. Clair	720-4549
Far East Asia	Yoonhee Macke	690-2581
Canada/Australia/Oceania	William George	720-6234
Eastern Europe	Keith Scarse	720-0139
EU/Western Europe	William George	720-6234
Latin America/Caribbean	Matt King	690-0620
Former Soviet Union-12	Keith Scarse	720-0139

*National Technical Information Service