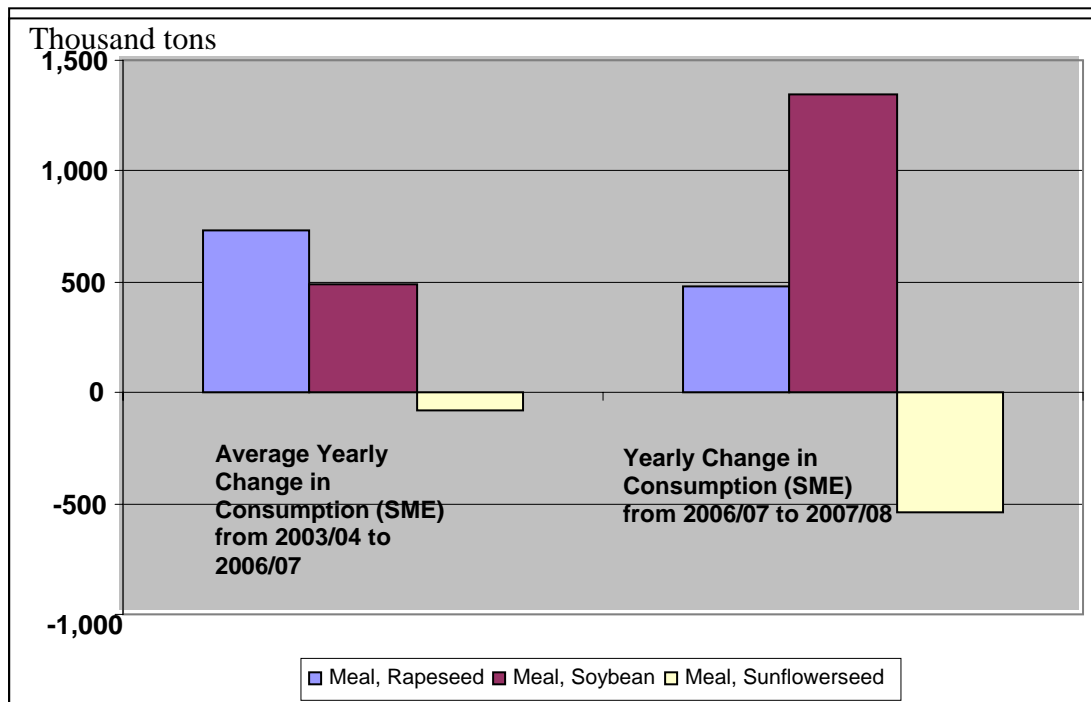




Oilseeds: World Markets and Trade

Growing EU Reliance on Soybean Meal to Meet Feed Protein Requirements



The EU is facing a protein deficit in feed rations with lower sunflowerseed and corn production, reduced feed wheat quality, and less rapeseed production than earlier forecast. To maintain protein levels in feed rations, the EU will need to raise its use of hi-pro soybean meal to offset lower sunflowerseed meal availability and greater use of lower protein feed grains. Additional EU supplies of rapeseed meal will be limited as will the availability of imported sunflowerseed and meal, due to lower production in Russia and Eastern Europe.

Expanded soybean imports have helped build stocks in anticipation of stronger demand in the coming year. Soybean meal imports are forecast to rise 1 million tons in 2007/08 to meet growing demand. Tight world soybean supplies are likely to be a limiting factor in EU imports.

Table 01: Major Oilseeds: World Supply and Distribution (Commodity View)
Million Metric Tons

	2003/04	2004/05	2005/06	2006/07	Jul 2007/08	Aug 2007/08
Production						
Oilseed, Copra	5.38	5.59	5.50	5.28	5.37	5.37
Oilseed, Cottonseed	35.77	45.36	43.17	44.70	44.10	43.90
Oilseed, Palm Kernel	8.43	9.51	9.98	10.27	10.95	10.95
Oilseed, Peanut	32.79	33.56	33.03	32.36	32.36	32.42
Oilseed, Rapeseed	39.43	46.16	48.73	46.23	51.05	49.65
Oilseed, Soybean	186.53	215.72	220.56	236.08	222.05	221.62
Oilseed, Sunflowerseed	26.89	25.42	30.10	30.09	29.84	27.44
Total	335.22	381.31	391.07	405.00	395.73	391.34
Imports						
Oilseed, Copra	0.07	0.13	0.08	0.09	0.10	0.10
Oilseed, Cottonseed	0.88	1.00	1.07	0.95	0.62	0.62
Oilseed, Palm Kernel	0.10	0.12	0.14	0.14	0.15	0.15
Oilseed, Peanut	1.76	1.87	1.97	1.90	1.93	1.93
Oilseed, Rapeseed	5.15	5.01	6.67	6.60	7.57	7.57
Oilseed, Soybean	54.06	63.52	64.14	68.89	75.31	74.09
Oilseed, Sunflowerseed	2.16	1.13	1.21	1.33	1.35	1.30
Total	64.18	72.78	75.27	79.90	87.02	85.75
Exports						
Oilseed, Copra	0.07	0.15	0.11	0.09	0.10	0.10
Oilseed, Cottonseed	0.89	0.99	1.09	0.96	0.62	0.61
Oilseed, Palm Kernel	0.07	0.10	0.14	0.13	0.14	0.14
Oilseed, Peanut	2.03	2.33	2.33	2.43	2.29	2.31
Oilseed, Rapeseed	5.48	4.87	6.97	6.74	7.68	7.78
Oilseed, Soybean	56.19	64.74	63.97	70.75	75.49	75.38
Oilseed, Sunflowerseed	2.27	1.22	1.55	1.71	1.61	1.47
Total	67.00	74.40	76.16	82.80	87.92	87.78
Crush						
Oilseed, Copra	5.31	5.54	5.49	5.25	5.30	5.30
Oilseed, Cottonseed	26.40	32.87	32.20	33.64	33.62	33.53
Oilseed, Palm Kernel	8.37	9.45	9.94	10.15	10.85	10.85
Oilseed, Peanut	15.62	15.68	15.29	15.04	15.00	15.04
Oilseed, Rapeseed	36.42	40.62	44.25	45.12	47.88	47.08
Oilseed, Soybean	163.67	175.62	185.11	193.57	203.44	202.80
Oilseed, Sunflowerseed	22.81	22.47	25.90	26.95	26.78	24.88
Total	278.60	302.26	318.18	329.72	342.87	339.48
Ending Stocks						
Oilseed, Copra	0.09	0.09	0.04	0.04	0.07	0.07
Oilseed, Cottonseed	0.58	0.90	1.18	1.06	0.76	0.77
Oilseed, Palm Kernel	0.17	0.18	0.13	0.16	0.18	0.18
Oilseed, Peanut	0.91	1.13	1.32	0.99	0.72	0.74
Oilseed, Rapeseed	1.85	4.53	6.02	4.03	3.88	3.58
Oilseed, Soybean	38.75	48.45	53.91	64.52	51.87	51.63
Oilseed, Sunflowerseed	2.03	1.61	1.93	1.49	0.96	0.75
Total	44.39	56.88	64.53	72.29	58.44	57.72

Totals may not add due to rounding

Table 02: Major Protein Meals: World Supply and Distribution (Commodity View)**Million Metric Tons**

	2003/04	2004/05	2005/06	2006/07	Jul 2007/08	Aug 2007/08
Production						
Meal, Copra	1.71	1.79	1.77	1.69	1.71	1.71
Meal, Cottonseed	12.04	15.01	14.64	15.32	15.24	15.26
Meal, Fish	5.29	5.66	4.83	5.59	5.65	5.65
Meal, Palm Kernel	4.40	4.96	5.22	5.32	5.69	5.69
Meal, Peanut	6.04	6.06	5.93	5.82	5.79	5.80
Meal, Rapeseed	21.76	24.15	26.21	27.03	28.43	28.12
Meal, Soybean	128.51	138.72	145.62	152.41	160.38	159.79
Meal, Sunflowerseed	10.27	9.96	11.38	11.85	11.77	10.95
Total	190.01	206.31	215.59	225.03	234.65	232.97
Exports						
Meal, Copra	0.73	0.74	0.78	0.72	0.72	0.72
Meal, Cottonseed	0.41	0.42	0.40	0.35	0.40	0.40
Meal, Fish	3.21	3.43	2.72	3.34	3.38	3.38
Meal, Palm Kernel	3.04	3.50	3.60	3.83	4.02	4.02
Meal, Peanut	0.32	0.18	0.26	0.18	0.24	0.24
Meal, Rapeseed	2.46	2.24	2.58	2.84	3.02	3.02
Meal, Soybean	45.56	46.61	51.42	53.39	56.11	56.03
Meal, Sunflowerseed	2.86	2.78	3.58	3.70	3.58	3.14
Total	58.58	59.89	65.35	68.34	71.47	70.95
Domestic Consumption						
Meal, Copra	1.65	1.76	1.66	1.53	1.63	1.63
Meal, Cottonseed	12.07	14.89	14.60	15.44	15.25	15.27
Meal, Fish	5.28	5.76	5.08	5.38	5.66	5.66
Meal, Palm Kernel	4.38	4.91	4.92	4.99	5.11	5.11
Meal, Peanut	5.96	6.03	5.87	5.83	5.77	5.78
Meal, Rapeseed	21.44	24.25	26.19	27.19	28.29	28.01
Meal, Soybean	128.43	137.11	145.68	151.55	159.41	159.12
Meal, Sunflowerseed	10.01	9.84	10.99	11.38	11.34	10.85
Total	189.21	204.56	214.98	223.31	232.46	231.43
Ending Stocks						
Meal, Copra	0.13	0.16	0.18	0.16	0.15	0.15
Meal, Cottonseed	0.09	0.20	0.25	0.19	0.19	0.19
Meal, Fish	0.20	0.29	0.22	0.19	0.20	0.20
Meal, Palm Kernel	0.24	0.27	0.35	0.27	0.32	0.32
Meal, Peanut	0.03	0.01	0.01	0.01	0.01	0.01
Meal, Rapeseed	0.64	0.59	0.58	0.42	0.44	0.44
Meal, Soybean	4.99	5.93	5.09	5.13	5.42	5.38
Meal, Sunflowerseed	0.25	0.21	0.23	0.26	0.23	0.18
Total	6.56	7.66	6.91	6.64	6.95	6.86

Totals may not add due to rounding

Table 03: Major Vegetable Oils: World Supply and Distribution (Commodity View)

Million Metric Tons

	2003/04	2004/05	2005/06	2006/07	Jul 2007/08	Aug 2007/08
Production						
Oil, Coconut	3.29	3.44	3.40	3.25	3.32	3.32
Oil, Cottonseed	3.85	4.76	4.65	4.86	4.84	4.84
Oil, Olive	3.06	2.97	2.59	2.99	3.02	3.02
Oil, Palm	29.59	33.88	35.81	36.38	39.00	39.00
Oil, Palm Kernel	3.67	4.13	4.38	4.48	4.81	4.79
Oil, Peanut	5.07	5.09	4.97	4.88	4.87	4.89
Oil, Rapeseed	14.17	15.76	17.14	17.76	18.74	18.54
Oil, Soybean	30.06	32.51	34.48	35.73	37.55	37.44
Oil, Sunflowerseed	9.17	9.04	10.42	10.86	10.74	10.01
Total	101.94	111.57	117.84	121.19	126.89	125.82
Imports						
Oil, Coconut	1.67	1.87	1.97	1.77	1.77	1.77
Oil, Cottonseed	0.13	0.10	0.09	0.11	0.11	0.11
Oil, Olive	0.60	0.57	0.57	0.63	0.61	0.61
Oil, Palm	21.42	24.14	25.73	27.05	27.83	27.88
Oil, Palm Kernel	1.49	1.58	1.73	1.86	1.80	1.80
Oil, Peanut	0.19	0.17	0.16	0.18	0.21	0.20
Oil, Rapeseed	1.36	1.17	1.48	2.09	2.16	2.16
Oil, Soybean	8.33	8.91	8.93	9.64	10.07	10.34
Oil, Sunflowerseed	1.92	2.14	3.12	3.52	3.43	3.08
Total	37.11	40.66	43.78	46.85	47.99	47.95
Exports						
Oil, Coconut	1.79	2.04	2.05	1.79	1.73	1.73
Oil, Cottonseed	0.14	0.12	0.11	0.15	0.15	0.15
Oil, Olive	0.66	0.64	0.59	0.65	0.65	0.65
Oil, Palm	21.67	24.60	26.21	27.16	28.15	28.15
Oil, Palm Kernel	1.61	1.92	1.98	2.17	2.13	2.13
Oil, Peanut	0.24	0.17	0.19	0.16	0.17	0.17
Oil, Rapeseed	1.31	1.29	1.72	1.98	2.05	2.05
Oil, Soybean	8.83	9.12	9.82	10.05	10.43	10.42
Oil, Sunflowerseed	2.67	2.55	3.83	3.77	3.63	3.24
Total	38.90	42.44	46.51	47.87	49.08	48.69
Domestic Consumption						
Oil, Coconut	3.24	3.31	3.41	3.30	3.36	3.36
Oil, Cottonseed	3.80	4.64	4.65	4.82	4.81	4.81
Oil, Olive	2.72	2.86	2.79	2.92	2.94	2.94
Oil, Palm	29.29	32.71	35.03	37.06	38.96	39.01
Oil, Palm Kernel	3.61	3.78	4.04	4.31	4.44	4.42
Oil, Peanut	5.02	5.11	5.02	4.95	4.93	4.93
Oil, Rapeseed	14.35	15.63	16.86	17.99	18.88	18.68
Oil, Soybean	30.01	31.67	33.55	35.41	37.60	37.78
Oil, Sunflowerseed	8.38	8.58	9.75	10.52	10.55	10.02
Total	100.41	108.28	115.09	121.28	126.47	125.95
Ending Stocks						
Oil, Coconut	0.42	0.38	0.30	0.24	0.23	0.23
Oil, Cottonseed	0.10	0.21	0.19	0.19	0.19	0.19
Oil, Olive	1.09	1.13	0.92	0.97	1.00	1.00
Oil, Palm	2.66	3.37	3.67	2.88	2.59	2.59
Oil, Palm Kernel	0.38	0.40	0.49	0.35	0.38	0.38
Oil, Peanut	0.20	0.18	0.10	0.05	0.04	0.04
Oil, Rapeseed	0.46	0.47	0.51	0.40	0.38	0.38
Oil, Soybean	2.26	2.89	2.93	2.85	2.34	2.42
Oil, Sunflowerseed	0.52	0.57	0.52	0.60	0.53	0.43
Total	8.10	9.60	9.63	8.52	7.68	7.66

Totals may not add due to rounding

Table 04: Major Oilseeds: World Supply and Distribution (Country View)

Million Metric Tons

	2003/04	2004/05	2005/06	2006/07	Jul 2007/08	Aug 2007/08
Production						
United States	76.60	95.94	95.53	96.62	80.22	80.19
Brazil	53.58	55.58	59.13	61.90	63.57	63.62
China, Peoples Republic	50.85	58.23	56.45	58.15	56.33	55.93
Argentina	36.84	43.43	45.03	51.56	51.94	51.94
India	29.68	29.39	30.60	29.92	32.61	32.61
Other	87.68	98.75	104.33	106.86	111.07	107.06
Total	335.22	381.31	391.07	405.00	395.73	391.34
Imports						
China, Peoples Republic	17.36	26.12	29.00	29.36	35.41	34.41
EU-27	16.90	16.00	15.93	17.81	17.10	17.05
Japan	7.27	6.83	6.54	6.60	6.62	6.62
Mexico	5.33	5.11	5.48	5.53	5.77	5.77
Taiwan	2.23	2.27	2.51	2.39	2.61	2.49
Thailand	1.45	1.56	1.54	1.74	1.64	1.84
Argentina	0.56	0.71	0.59	1.71	1.81	1.81
Indonesia	1.19	1.28	1.51	1.56	1.77	1.77
Turkey	1.34	1.52	1.53	1.61	1.65	1.65
Korea, Republic of	1.52	1.42	1.37	1.42	1.33	1.35
Other	9.05	9.98	9.28	10.18	11.33	11.00
Total	64.18	72.78	75.27	79.90	87.02	85.75
Exports						
Brazil	20.58	20.24	25.99	24.78	29.83	29.83
United States	25.16	30.71	26.61	31.23	28.55	28.57
Argentina	7.04	10.08	7.78	8.52	10.72	10.72
Canada	4.78	4.63	6.80	7.02	7.28	7.17
Paraguay	2.78	2.92	2.50	4.93	4.64	4.64
Ukraine	1.02	0.13	0.63	1.15	1.22	1.42
China, Peoples Republic	1.24	1.56	1.28	1.55	1.49	1.39
Other	4.41	4.14	4.57	3.63	4.21	4.06
Total	67.00	74.40	76.16	82.80	87.92	87.78
Crush						
China, Peoples Republic	51.31	60.14	64.98	66.98	70.07	68.57
United States	45.53	50.17	51.90	53.14	53.14	53.18
Argentina	28.30	31.43	35.93	37.40	42.90	42.90
EU-27	31.11	33.26	33.71	36.91	38.14	38.01
Brazil	31.29	31.24	30.01	31.96	31.41	31.46
India	23.45	23.55	25.05	25.02	26.37	26.37
Indonesia	4.63	5.15	5.58	5.76	6.12	6.12
Mexico	5.52	5.51	5.85	5.85	6.11	6.11
Russian Federation	4.41	5.15	6.51	6.99	7.11	6.11
Pakistan	3.99	5.41	5.08	5.15	5.47	5.47
Japan	5.82	5.42	5.12	5.18	5.20	5.20
Canada	4.92	4.61	4.89	4.93	5.33	5.03
Malaysia	4.05	4.65	4.72	4.68	5.02	5.02
Ukraine	3.32	3.31	4.98	5.43	4.95	4.55
Turkey	2.81	2.95	2.92	3.16	3.15	3.09
Other	28.16	30.30	30.94	31.19	32.40	32.32
Total	278.60	302.26	318.18	329.72	342.87	339.48
Ending Stocks						
Argentina	16.35	17.47	17.84	23.61	21.48	22.09
Brazil	15.52	16.77	16.75	18.64	17.66	17.66
United States	4.15	8.29	14.20	17.10	7.64	6.98
China, Peoples Republic	2.10	4.70	4.47	3.18	3.08	3.08
EU-27	1.76	3.19	3.75	4.21	3.35	2.56
Other	4.52	6.46	7.52	5.56	5.23	5.35
Total	44.39	56.88	64.53	72.29	58.44	57.72

Major Oilseeds includes Copra, Cottonseed, Palm Kernel, Peanut, Rapeseed, Soybeans and Sunflowerseeds.

Table 05: Major Protein Meals: World Supply and Distribution (Country View)
Million Metric Tons

	2003/04	2004/05	2005/06	2006/07	Jul 2007/08	Aug 2007/08
Production						
China, Peoples Republic	33.91	39.57	43.19	44.57	47.25	46.03
United States	35.21	39.27	39.95	41.07	41.26	41.28
Argentina	21.06	23.26	26.71	27.97	32.07	32.07
EU-27	21.14	22.38	22.49	24.54	25.26	25.31
Brazil	23.28	23.63	22.68	24.14	23.69	23.78
Other	55.41	58.21	60.58	62.74	65.11	64.51
Total	190.01	206.31	215.59	225.03	234.65	232.97
Imports						
EU-27	27.33	27.29	28.26	28.46	28.74	29.14
Korea, Republic of	2.45	2.70	2.95	3.06	3.33	3.33
Thailand	1.88	2.03	2.41	2.80	2.87	2.87
Indonesia	1.88	2.02	2.24	2.48	2.64	2.74
China, Peoples Republic	1.32	1.80	2.12	1.85	2.44	2.44
Mexico	1.00	1.53	1.98	2.10	2.19	2.19
Japan	1.63	1.96	2.05	2.15	2.10	2.18
Other	20.22	19.93	21.97	23.44	25.28	24.74
Total	57.71	59.25	63.98	66.34	69.59	69.63
Exports						
Argentina	20.18	21.79	25.27	26.78	30.54	30.54
Brazil	14.81	14.26	12.91	12.66	12.00	12.00
United States	4.94	6.96	7.61	8.06	7.91	7.78
India	4.20	2.45	4.49	4.35	4.39	4.39
Indonesia	1.44	1.84	1.99	2.04	2.14	2.14
Malaysia	1.79	1.93	1.81	1.99	2.09	2.09
Peru	1.76	1.79	1.35	1.78	1.79	1.79
Other	9.48	8.90	9.92	10.68	10.61	10.22
Total	58.58	59.89	65.35	68.34	71.47	70.95
Domestic Consumption						
EU-27	47.82	48.72	49.60	51.98	52.94	53.47
China, Peoples Republic	34.38	40.55	44.82	45.61	49.01	47.78
United States	32.08	33.90	33.85	34.75	35.12	35.29
Brazil	8.61	9.85	10.42	11.30	11.84	11.93
India	8.44	9.70	10.10	10.28	10.64	10.64
Mexico	4.90	5.38	6.01	6.17	6.42	6.42
Japan	6.20	6.01	5.89	6.00	5.95	6.03
Thailand	3.44	3.71	4.00	4.54	4.45	4.68
Korea, Republic of	3.40	3.52	3.69	3.96	4.11	4.13
Indonesia	2.49	2.61	2.90	3.13	3.31	3.41
Other	37.44	40.61	43.73	45.60	48.67	47.64
Total	189.21	204.56	214.98	223.31	232.46	231.43
SME						
EU-27	44.37	44.74	45.49	47.66	48.34	48.98
China, Peoples Republic	32.75	38.65	42.55	43.34	46.99	45.77
United States	31.43	33.23	33.15	34.05	34.38	34.55
Brazil	8.44	9.67	10.28	11.10	11.67	11.74
India	7.42	8.41	8.68	8.90	9.20	9.20
Mexico	4.65	5.11	5.68	5.87	6.08	6.08
Japan	6.13	5.92	5.80	5.92	5.87	5.95
Other	44.35	47.64	51.32	54.12	57.30	56.64
Total	179.54	193.37	202.95	210.96	219.82	218.90
Ending Stocks						
Brazil	1.81	1.58	1.13	1.55	1.63	1.63
Argentina	0.71	1.03	1.30	1.25	1.50	1.50
EU-27	1.13	1.09	1.09	1.10	1.11	1.05
India	0.43	1.25	0.75	0.40	0.37	0.37
United States	0.27	0.22	0.36	0.33	0.33	0.33
Other	2.21	2.50	2.27	2.00	2.02	1.97
Total	6.56	7.66	6.91	6.64	6.95	6.86

Major Protein Meals include Copra, Cottonseed, Fish, Palm Kernel, Peanut, Rapeseed, Soybean, and Sunflower Meal.

Table 06: Major Vegetable Oils: World Supply and Distribution (Country View)

Million Metric Tons

	2003/04	2004/05	2005/06	2006/07	Jul 2007/08	Aug 2007/08
Production						
Indonesia	13.77	16.49	18.09	18.67	20.04	20.04
Malaysia	15.12	17.15	17.50	17.34	18.77	18.75
China, Peoples Republic	11.96	13.79	14.75	15.04	15.45	15.19
EU-27	11.80	12.59	12.62	13.97	14.60	14.35
United States	8.77	9.76	10.39	10.37	10.39	10.40
Argentina	5.91	6.69	7.52	7.81	8.85	8.85
India	6.67	6.47	6.77	6.57	7.03	7.03
Other	27.94	28.65	30.21	31.42	31.77	31.22
Total	101.94	111.57	117.84	121.19	126.89	125.82
Imports						
EU-27	5.63	6.80	8.03	8.99	9.56	9.21
China, Peoples Republic	7.12	6.66	6.96	8.11	8.44	8.69
India	4.56	5.88	4.84	5.68	5.75	5.90
United States	1.91	1.83	2.39	2.41	2.59	2.48
Pakistan	1.31	1.62	1.81	1.82	1.85	1.85
Iran	1.12	1.16	1.07	1.35	1.28	1.33
Bangladesh	0.89	1.01	1.12	1.22	1.27	1.27
Egypt	0.82	0.98	1.23	1.22	1.27	1.27
Turkey	0.51	0.76	1.05	1.09	1.14	1.13
Malaysia	1.22	0.76	1.24	1.12	0.83	0.83
Other	12.02	13.20	14.03	13.86	14.03	14.01
Total	37.11	40.66	43.78	46.85	47.99	47.95
Exports						
Indonesia	9.12	11.40	12.85	13.37	14.44	14.44
Malaysia	12.46	13.63	13.75	14.41	14.09	14.09
Argentina	5.30	5.99	6.89	6.92	7.76	7.76
Brazil	2.79	2.55	2.55	2.45	2.27	2.27
Canada	1.00	0.98	1.12	1.23	1.28	1.28
Ukraine	0.98	0.65	1.54	1.55	1.30	1.14
United States	0.74	0.84	0.90	1.21	1.09	1.09
Other	6.51	6.40	6.90	6.74	6.86	6.63
Total	38.90	42.44	46.51	47.87	49.08	48.69
Domestic Consumption						
China, Peoples Republic	18.95	20.47	21.50	22.89	23.68	23.69
EU-27	16.05	17.95	19.89	22.03	23.21	22.74
India	11.17	11.78	12.08	12.23	12.80	12.95
United States	10.07	10.45	11.18	11.63	12.31	12.22
Indonesia	4.74	4.98	5.35	5.57	5.70	5.70
Malaysia	3.56	4.04	4.46	4.81	5.58	5.56
Brazil	3.43	3.59	3.66	3.95	4.12	4.14
Pakistan	2.02	2.42	2.66	2.77	2.86	2.86
Russian Federation	2.39	2.70	2.73	2.78	2.83	2.72
Japan	2.28	2.26	2.18	2.20	2.19	2.19
Mexico	1.85	1.85	1.98	1.98	2.09	2.09
Turkey	1.33	1.59	1.80	1.94	2.00	1.98
Nigeria	1.52	1.56	1.58	1.60	1.62	1.62
Egypt	1.09	1.17	1.40	1.50	1.53	1.54
Bangladesh	1.08	1.15	1.24	1.41	1.49	1.49
Other	18.91	20.32	21.38	21.99	22.47	22.48
Total	100.41	108.28	115.09	121.28	126.47	125.95
Ending Stocks						
EU-27	1.90	1.99	1.78	1.81	1.85	1.75
Malaysia	1.57	1.81	2.33	1.57	1.49	1.49
United States	0.79	1.09	1.80	1.74	1.26	1.31
Indonesia	0.93	1.08	1.00	0.78	0.72	0.72
Argentina	0.48	0.42	0.32	0.33	0.31	0.33
Other	2.42	3.21	2.40	2.29	2.05	2.05
Total	8.10	9.60	9.63	8.52	7.68	7.66

Major Vegetable Oils includes Coconut, Cottonseed, Olive, Palm, Palm Kernel, Peanut, Rapeseed, Soybean, and Sunflowerseed oil.

Table 07: Soybeans: World Supply and Distribution
Thousand Metric Tons

	2003/04	2004/05	2005/06	2006/07	Jul 2007/08	Aug 2007/08
Production						
United States	66,778	85,013	83,368	86,770	71,441	71,448
Brazil	51,000	53,000	57,000	59,000	61,000	61,000
Argentina	33,000	39,000	40,500	47,200	47,000	47,000
China, Peoples Republic	15,394	17,400	16,350	16,200	15,600	15,200
India	6,800	5,850	7,000	7,690	7,900	7,900
Paraguay	3,911	4,050	3,640	6,500	6,200	6,200
Canada	2,263	3,042	3,161	3,466	3,100	3,100
Other	7,385	8,366	9,537	9,249	9,813	9,773
Total	186,531	215,721	220,556	236,075	222,054	221,621
Imports						
China, Peoples Republic	16,933	25,802	28,317	28,750	34,500	33,500
EU-27	14,675	14,540	13,952	15,800	14,881	14,881
Japan	4,688	4,295	3,957	4,100	4,150	4,150
Mexico	3,797	3,640	3,667	3,925	3,950	3,950
Taiwan	2,217	2,256	2,498	2,375	2,600	2,475
Argentina	537	692	584	1,700	1,800	1,800
Thailand	1,407	1,517	1,501	1,700	1,600	1,800
Indonesia	1,059	1,112	1,280	1,400	1,600	1,600
Korea, Republic of	1,368	1,240	1,190	1,225	1,200	1,225
Egypt	243	762	776	1,100	1,200	1,200
Other	7,133	7,660	6,420	6,814	7,826	7,504
Total	54,057	63,516	64,142	68,889	75,307	74,085
Exports						
Brazil	20,417	20,137	25,911	24,600	29,688	29,688
United States	24,128	29,860	25,579	29,937	27,760	27,760
Argentina	6,741	9,568	7,249	8,000	10,200	10,200
Paraguay	2,776	2,888	2,465	4,900	4,600	4,600
Canada	897	1,093	1,326	1,570	1,480	1,470
Other	1,228	1,197	1,443	1,742	1,765	1,665
Total	56,187	64,743	63,973	70,749	75,493	75,383
Crush						
United States	41,632	46,160	47,324	48,852	48,988	48,988
Argentina	25,021	27,313	31,886	33,300	38,500	38,500
China, Peoples Republic	25,439	30,362	34,500	35,700	39,700	38,200
Brazil	29,323	29,252	28,285	29,700	29,300	29,300
EU-27	14,084	14,222	13,529	14,711	14,435	15,300
India	5,534	5,030	5,990	6,615	6,795	6,795
Mexico	3,889	3,729	3,823	3,970	4,010	4,010
Japan	3,536	3,149	2,820	2,925	2,925	2,925
Taiwan	2,046	2,013	2,190	2,100	2,350	2,225
Bolivia	1,676	1,815	1,843	1,680	1,850	1,850
Thailand	1,385	1,500	1,413	1,600	1,400	1,693
Canada	1,534	1,580	1,504	1,534	1,525	1,525
Paraguay	985	979	1,220	1,450	1,450	1,470
Egypt	245	721	800	1,100	1,200	1,200
Iran	938	1,066	1,154	860	1,100	1,000
Other	6,403	6,731	6,830	7,468	7,913	7,823
Total	163,670	175,622	185,111	193,565	203,441	202,804
Ending Stocks						
Argentina	15,584	16,960	17,452	23,545	21,455	22,070
Brazil	15,507	16,750	16,733	18,538	17,625	17,625
United States	3,059	6,960	12,229	15,660	6,665	5,992
China, Peoples Republic	2,100	4,700	4,473	3,183	3,083	3,083
EU-27	906	880	967	1,787	1,012	918
Other	1,598	2,203	2,057	1,810	2,025	1,945
Total	38,754	48,453	53,911	64,523	51,865	51,633

Most countries are on an October/September Marketing Year (MY). The United States, Mexico, and Thailand are on a September/August MY. Canada is on an August/July MY. Paraguay is on a March/February MY and Turkey is on an March/February MY.

