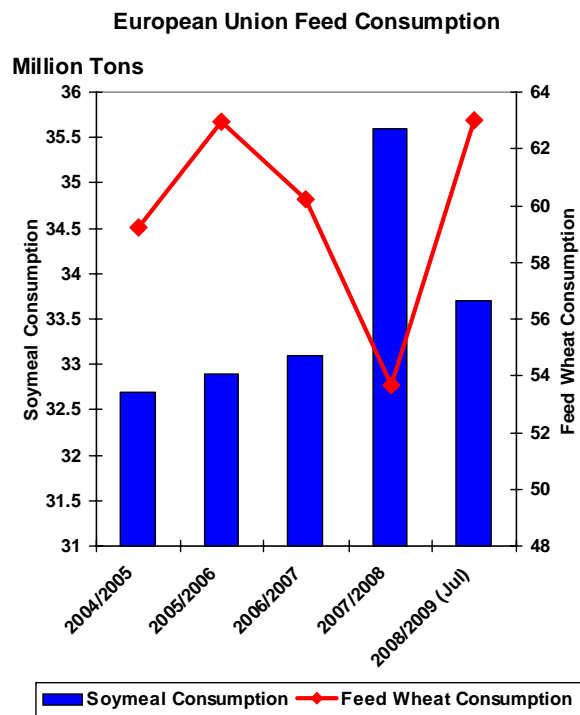
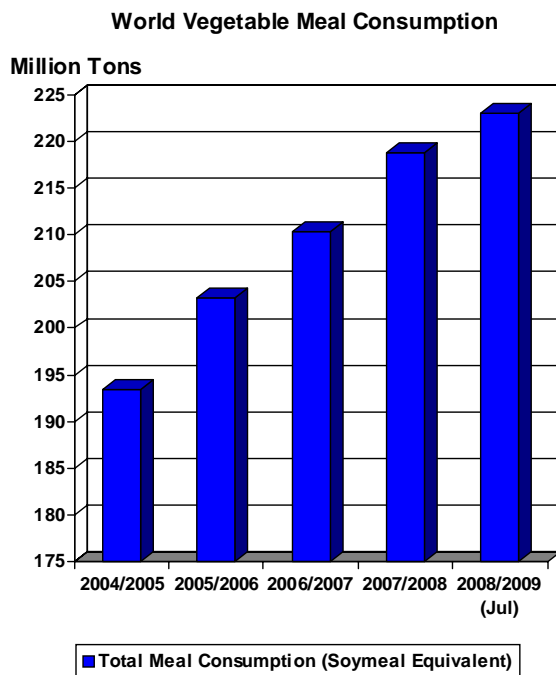




# Oilseeds: World Markets and Trade

## World Vegetable Meal Consumption Growth Slows As Feed Quality Wheat Use in the EU Rebounds



Growth in world vegetable meal consumption is forecast to slow to just 2% (in soymeal equivalent terms) in 2008/09 after 4 strong years of 4-5% annual growth. The slowing demand growth is primarily attributed to a forecast 6% drop in soymeal use in the European Union in response to rebounding feed quality wheat production. Soymeal consumption in the EU is forecast to return to the prevailing long-term trend in 08/09 after an incredibly strong year.

Strong demand growth in Brazil attributed to their expanding poultry industry, and in Asia particularly from vegetable meal importers Indonesia and Thailand is forecast to offset the drop in the EU.

In the face of slowing global demand growth, vegetable meal exportable supplies should be more than sufficient to meet demand next year as soybean, sunflowerseed, and rapeseed production are all forecast to rebound. Additionally, palm kernel meal production is forecast to grow as palm area continues to expand.

**Table 01: Major Oilseeds: World Supply and Distribution (Commodity View)**

Million Metric Tons

	2003/04	2004/05	2005/06	2006/07	2007/08	Jul 2008/09
<b>Production</b>						
Oilseed, Copra	5.37	5.59	5.59	5.26	5.70	5.94
Oilseed, Cottonseed	36.24	45.45	43.44	45.83	45.51	44.71
Oilseed, Palm Kernel	8.43	9.54	9.97	10.19	11.05	11.69
Oilseed, Peanut	32.82	33.61	33.07	30.53	32.27	33.41
Oilseed, Rapeseed	39.43	46.14	48.68	45.16	47.30	51.97
Oilseed, Soybean	186.62	215.76	220.53	236.56	218.80	237.80
Oilseed, Sunflowerseed	26.93	25.45	30.04	29.81	27.18	31.79
<b>Total</b>	<b>335.85</b>	<b>381.52</b>	<b>391.30</b>	<b>403.33</b>	<b>387.80</b>	<b>417.31</b>
<b>Imports</b>						
Oilseed, Copra	0.07	0.13	0.07	0.11	0.08	0.08
Oilseed, Cottonseed	0.88	1.00	1.07	0.97	0.92	0.75
Oilseed, Palm Kernel	0.10	0.12	0.14	0.14	0.14	0.13
Oilseed, Peanut	1.76	1.87	1.98	1.96	1.92	1.95
Oilseed, Rapeseed	5.15	5.02	6.71	6.97	7.76	8.50
Oilseed, Soybean	54.00	63.49	64.05	69.08	75.97	76.38
Oilseed, Sunflowerseed	2.17	1.14	1.29	1.65	0.92	1.58
<b>Total</b>	<b>64.13</b>	<b>72.76</b>	<b>75.30</b>	<b>80.89</b>	<b>87.71</b>	<b>89.35</b>
<b>Exports</b>						
Oilseed, Copra	0.07	0.15	0.11	0.12	0.10	0.11
Oilseed, Cottonseed	0.89	1.00	0.99	0.97	0.97	0.79
Oilseed, Palm Kernel	0.07	0.10	0.14	0.13	0.14	0.17
Oilseed, Peanut	2.03	2.33	2.37	2.51	2.48	2.56
Oilseed, Rapeseed	5.48	4.87	6.99	6.61	8.24	8.84
Oilseed, Soybean	56.20	64.77	63.58	71.27	76.20	76.28
Oilseed, Sunflowerseed	2.27	1.22	1.50	1.88	1.28	1.81
<b>Total</b>	<b>67.02</b>	<b>74.45</b>	<b>75.68</b>	<b>83.48</b>	<b>89.42</b>	<b>90.56</b>
<b>Crush</b>						
Oilseed, Copra	5.30	5.54	5.57	5.22	5.58	5.83
Oilseed, Cottonseed	26.97	33.25	32.04	34.01	34.15	34.41
Oilseed, Palm Kernel	8.37	9.48	9.93	10.07	10.82	11.43
Oilseed, Peanut	15.62	15.70	15.28	13.83	14.82	15.49
Oilseed, Rapeseed	36.41	40.60	44.58	43.75	46.09	48.18
Oilseed, Soybean	163.76	175.65	185.21	196.13	205.10	207.34
Oilseed, Sunflowerseed	22.66	22.46	25.92	26.04	24.06	28.00
<b>Total</b>	<b>279.09</b>	<b>302.68</b>	<b>318.54</b>	<b>329.04</b>	<b>340.62</b>	<b>350.68</b>
<b>Ending Stocks</b>						
Oilseed, Copra	0.09	0.09	0.04	0.04	0.11	0.17
Oilseed, Cottonseed	0.65	0.95	1.28	1.10	1.01	0.81
Oilseed, Palm Kernel	0.17	0.18	0.13	0.16	0.25	0.31
Oilseed, Peanut	1.16	1.36	1.53	1.11	0.87	0.90
Oilseed, Rapeseed	1.86	4.50	5.70	4.71	2.82	3.58
Oilseed, Soybean	37.83	47.54	53.35	62.46	48.84	48.87
Oilseed, Sunflowerseed	2.97	2.52	2.83	3.04	2.76	3.02
<b>Total</b>	<b>44.72</b>	<b>57.14</b>	<b>64.86</b>	<b>72.63</b>	<b>56.66</b>	<b>57.65</b>

Totals may not add due to rounding

**Table 02: Major Protein Meals: World Supply and Distribution (Commodity View)****Million Metric Tons**

	2003/04	2004/05	2005/06	2006/07	2007/08	Jul 2008/09
<b>Production</b>						
Meal, Copra	1.72	1.81	1.82	1.71	1.83	1.90
Meal, Cottonseed	12.28	15.12	14.56	15.48	15.58	15.71
Meal, Fish	5.33	5.70	4.94	5.06	5.10	5.15
Meal, Palm Kernel	4.41	5.00	5.24	5.32	5.73	6.04
Meal, Peanut	6.04	6.07	5.92	5.39	5.78	6.04
Meal, Rapeseed	21.85	24.24	26.47	26.03	27.19	28.48
Meal, Soybean	128.67	138.84	145.77	154.28	161.37	163.05
Meal, Sunflowerseed	10.22	10.02	11.48	11.51	10.54	12.35
<b>Total</b>	<b>190.52</b>	<b>206.80</b>	<b>216.20</b>	<b>224.77</b>	<b>233.11</b>	<b>238.71</b>
<b>Imports</b>						
Meal, Copra	0.68	0.73	0.68	0.62	0.78	0.77
Meal, Cottonseed	0.46	0.41	0.42	0.39	0.40	0.41
Meal, Fish	3.11	3.62	2.92	2.68	3.04	3.14
Meal, Palm Kernel	3.18	3.67	3.77	3.98	4.13	4.12
Meal, Peanut	0.26	0.12	0.20	0.15	0.21	0.16
Meal, Rapeseed	2.49	2.30	2.55	3.02	3.32	3.38
Meal, Soybean	45.01	46.03	50.92	52.32	56.44	56.23
Meal, Sunflowerseed	2.62	2.55	3.17	3.32	2.95	3.21
<b>Total</b>	<b>57.81</b>	<b>59.44</b>	<b>64.63</b>	<b>66.47</b>	<b>71.27</b>	<b>71.41</b>
<b>Exports</b>						
Meal, Copra	0.73	0.74	0.78	0.73	0.77	0.82
Meal, Cottonseed	0.44	0.42	0.40	0.35	0.40	0.36
Meal, Fish	3.21	3.65	2.73	2.59	2.71	2.72
Meal, Palm Kernel	3.04	3.50	3.60	3.89	4.14	4.20
Meal, Peanut	0.32	0.18	0.26	0.21	0.29	0.31
Meal, Rapeseed	2.46	2.51	2.78	2.90	3.51	3.57
Meal, Soybean	45.57	46.61	51.55	54.23	58.20	57.76
Meal, Sunflowerseed	2.86	2.77	3.50	3.44	3.35	3.96
<b>Total</b>	<b>58.62</b>	<b>60.39</b>	<b>65.61</b>	<b>68.34</b>	<b>73.37</b>	<b>73.70</b>
<b>Domestic Consumption</b>						
Meal, Copra	1.66	1.78	1.69	1.62	1.81	1.83
Meal, Cottonseed	12.28	15.01	14.53	15.56	15.65	15.75
Meal, Fish	5.36	5.70	5.13	5.07	5.41	5.55
Meal, Palm Kernel	4.48	5.13	5.30	5.59	5.76	5.90
Meal, Peanut	5.96	6.03	5.86	5.33	5.71	5.88
Meal, Rapeseed	21.52	24.19	26.07	26.39	27.05	28.27
Meal, Soybean	128.53	137.22	145.78	152.13	159.85	161.88
Meal, Sunflowerseed	9.96	9.81	11.06	11.41	10.23	11.60
<b>Total</b>	<b>189.74</b>	<b>204.86</b>	<b>215.42</b>	<b>223.09</b>	<b>231.47</b>	<b>236.65</b>
<b>Ending Stocks</b>						
Meal, Copra	0.13	0.16	0.18	0.16	0.18	0.20
Meal, Cottonseed	0.09	0.20	0.25	0.21	0.13	0.13
Meal, Fish	0.18	0.15	0.15	0.24	0.25	0.28
Meal, Palm Kernel	0.24	0.27	0.38	0.21	0.18	0.23
Meal, Peanut	0.03	0.01	0.01	0.01	0.01	0.01
Meal, Rapeseed	0.65	0.49	0.65	0.39	0.35	0.35
Meal, Soybean	5.45	6.50	5.85	6.10	5.85	5.50
Meal, Sunflowerseed	0.19	0.17	0.26	0.24	0.15	0.15
<b>Total</b>	<b>6.96</b>	<b>7.94</b>	<b>7.74</b>	<b>7.55</b>	<b>7.09</b>	<b>6.85</b>

Totals may not add due to rounding

**Table 03: Major Vegetable Oils: World Supply and Distribution (Commodity View)**

Million Metric Tons

	2003/04	2004/05	2005/06	2006/07	2007/08	Jul 2008/09
<b>Production</b>						
Oil, Coconut	3.27	3.45	3.48	3.32	3.50	3.62
Oil, Cottonseed	3.93	4.78	4.62	4.88	4.95	4.96
Oil, Olive	3.06	2.96	2.65	2.91	2.84	2.97
Oil, Palm	30.00	33.52	35.98	37.34	41.12	42.90
Oil, Palm Kernel	3.68	4.15	4.38	4.45	4.78	5.05
Oil, Peanut	5.03	5.05	4.93	4.46	4.78	5.00
Oil, Rapeseed	14.08	15.69	17.25	17.14	18.07	18.95
Oil, Soybean	30.18	32.59	34.60	36.43	38.34	38.63
Oil, Sunflowerseed	9.19	9.17	10.53	10.58	9.85	11.40
<b>Total</b>	<b>102.42</b>	<b>111.36</b>	<b>118.41</b>	<b>121.50</b>	<b>128.21</b>	<b>133.48</b>
<b>Imports</b>						
Oil, Coconut	1.68	1.87	1.99	1.85	1.92	1.96
Oil, Cottonseed	0.13	0.10	0.09	0.11	0.11	0.12
Oil, Olive	0.60	0.57	0.58	0.66	0.67	0.70
Oil, Palm	21.32	23.92	25.71	26.84	29.28	31.10
Oil, Palm Kernel	1.49	1.58	1.74	2.08	1.98	2.09
Oil, Peanut	0.19	0.17	0.16	0.18	0.17	0.17
Oil, Rapeseed	1.36	1.20	1.46	2.20	2.06	2.22
Oil, Soybean	8.33	8.91	9.02	9.70	10.52	10.72
Oil, Sunflowerseed	1.92	2.17	3.24	3.29	2.85	3.31
<b>Total</b>	<b>37.02</b>	<b>40.49</b>	<b>43.98</b>	<b>46.91</b>	<b>49.56</b>	<b>52.38</b>
<b>Exports</b>						
Oil, Coconut	1.79	2.04	1.99	1.73	1.93	2.01
Oil, Cottonseed	0.14	0.12	0.11	0.17	0.19	0.15
Oil, Olive	0.66	0.63	0.61	0.70	0.70	0.75
Oil, Palm	21.61	24.49	26.71	26.85	29.71	31.38
Oil, Palm Kernel	1.61	1.92	1.98	2.38	2.32	2.45
Oil, Peanut	0.24	0.17	0.19	0.18	0.18	0.21
Oil, Rapeseed	1.33	1.30	1.74	1.94	1.90	2.04
Oil, Soybean	8.83	9.13	9.83	10.70	11.25	10.87
Oil, Sunflowerseed	2.67	2.63	3.88	3.86	3.55	4.15
<b>Total</b>	<b>38.86</b>	<b>42.43</b>	<b>47.03</b>	<b>48.51</b>	<b>51.74</b>	<b>54.00</b>
<b>Domestic Consumption</b>						
Oil, Coconut	3.21	3.33	3.48	3.51	3.50	3.57
Oil, Cottonseed	3.88	4.66	4.62	4.81	4.92	4.95
Oil, Olive	2.70	2.78	2.71	2.83	2.89	2.92
Oil, Palm	29.21	32.49	35.12	37.30	40.48	42.72
Oil, Palm Kernel	3.61	3.80	4.04	4.31	4.38	4.68
Oil, Peanut	4.97	5.06	4.97	4.55	4.76	4.96
Oil, Rapeseed	14.28	15.52	16.87	17.52	18.29	19.09
Oil, Soybean	30.06	31.69	33.57	35.59	38.00	38.59
Oil, Sunflowerseed	8.37	8.53	9.83	10.31	9.31	10.44
<b>Total</b>	<b>100.29</b>	<b>107.85</b>	<b>115.20</b>	<b>120.73</b>	<b>126.52</b>	<b>131.92</b>
<b>Ending Stocks</b>						
Oil, Coconut	0.41	0.36	0.36	0.29	0.28	0.28
Oil, Cottonseed	0.10	0.21	0.19	0.20	0.15	0.12
Oil, Olive	1.11	1.23	1.15	1.18	1.10	1.10
Oil, Palm	3.11	3.57	3.42	3.45	3.66	3.56
Oil, Palm Kernel	0.38	0.40	0.50	0.34	0.40	0.41
Oil, Peanut	0.22	0.21	0.14	0.06	0.07	0.08
Oil, Rapeseed	0.40	0.46	0.56	0.44	0.38	0.40
Oil, Soybean	2.40	3.08	3.30	3.13	2.73	2.62
Oil, Sunflowerseed	0.57	0.75	0.81	0.52	0.36	0.47
<b>Total</b>	<b>8.70</b>	<b>10.27</b>	<b>10.43</b>	<b>9.60</b>	<b>9.12</b>	<b>9.04</b>

Totals may not add due to rounding

**Table 04: Major Oilseeds: World Supply and Distribution (Country View)**  
**Million Metric Tons**

	2003/04	2004/05	2005/06	2006/07	2007/08	Jul 2008/09
<b>Production</b>						
United States	76.60	95.94	95.53	96.61	80.00	90.13
Brazil	53.58	55.58	59.13	62.01	64.05	66.77
China, Peoples Republic	51.31	58.35	56.80	54.31	52.17	55.81
Argentina	36.84	43.43	45.03	53.16	52.49	53.67
India	29.69	29.40	30.70	29.92	33.88	34.55
Other	87.84	98.83	104.11	107.32	105.22	116.38
<b>Total</b>	<b>335.85</b>	<b>381.52</b>	<b>391.30</b>	<b>403.33</b>	<b>387.80</b>	<b>417.31</b>
<b>Imports</b>						
China, Peoples Republic	17.36	26.12	29.00	29.70	35.26	35.91
EU-27	16.90	16.00	15.92	17.19	16.97	17.33
Japan	7.27	6.83	6.54	6.55	6.57	6.64
Mexico	5.33	5.11	5.48	5.57	5.59	5.28
Argentina	0.57	0.71	0.61	2.01	2.47	2.67
Taiwan	2.23	2.27	2.51	2.44	2.26	2.41
Turkey	1.33	1.53	1.61	1.78	1.94	2.02
Thailand	1.45	1.56	1.52	1.58	1.64	1.69
Indonesia	1.19	1.28	1.42	1.51	1.57	1.63
Korea, Republic of	1.52	1.42	1.37	1.41	1.42	1.41
Other	9.00	9.95	9.33	11.14	12.03	12.38
<b>Total</b>	<b>64.13</b>	<b>72.76</b>	<b>75.30</b>	<b>80.89</b>	<b>87.71</b>	<b>89.35</b>
<b>Exports</b>						
Brazil	20.58	20.24	25.99	23.65	25.37	29.02
United States	25.16	30.71	26.61	31.68	32.68	28.40
Argentina	7.04	10.08	7.83	10.19	12.88	12.78
Canada	4.79	4.67	6.80	7.33	7.58	6.80
Paraguay	2.78	2.91	2.17	4.26	4.54	4.79
Ukraine	1.02	0.13	0.63	1.24	1.20	2.53
China, Peoples Republic	1.24	1.57	1.28	1.47	1.12	1.25
Other	4.41	4.15	4.37	3.66	4.04	5.00
<b>Total</b>	<b>67.02</b>	<b>74.45</b>	<b>75.68</b>	<b>83.48</b>	<b>89.42</b>	<b>90.56</b>
<b>Crush</b>						
China, Peoples Republic	51.89	60.54	64.97	64.73	66.82	69.83
United States	45.53	50.17	51.90	53.49	54.57	54.15
Argentina	28.18	31.41	35.93	36.95	40.89	42.22
EU-27	31.10	33.38	34.18	36.21	37.35	38.70
Brazil	31.29	31.24	30.01	33.47	34.95	34.79
India	23.46	23.57	25.10	24.62	27.50	27.90
Russian Federation	4.41	5.15	6.51	7.16	6.58	7.20
Indonesia	4.63	5.15	5.58	5.74	6.09	6.69
Canada	4.96	4.58	4.92	5.10	5.39	5.65
Mexico	5.52	5.51	5.85	5.89	5.90	5.61
Ukraine	3.32	3.34	4.98	5.39	4.67	5.56
Pakistan	3.99	5.41	5.08	5.51	4.74	5.52
Japan	5.82	5.42	5.12	5.17	5.13	5.18
Malaysia	4.05	4.65	4.73	4.41	4.90	4.89
Turkey	2.80	2.87	2.83	3.14	3.01	2.97
Other	28.16	30.30	30.86	32.07	32.15	33.84
<b>Total</b>	<b>279.09</b>	<b>302.68</b>	<b>318.54</b>	<b>329.04</b>	<b>340.62</b>	<b>350.68</b>
<b>Ending Stocks</b>						
Argentina	16.56	17.64	17.96	24.37	23.92	23.61
Brazil	15.52	16.77	16.75	18.41	18.93	18.65
United States	4.15	8.29	14.20	17.02	4.47	4.86
EU-27	1.83	3.14	3.24	3.46	2.83	3.15
China, Peoples Republic	2.10	4.70	4.57	2.66	1.78	1.86
Other	4.57	6.60	8.14	6.72	4.73	5.52
<b>Total</b>	<b>44.72</b>	<b>57.14</b>	<b>64.86</b>	<b>72.63</b>	<b>56.66</b>	<b>57.65</b>

Major Oilseeds includes Copra, Cottonseed, Palm Kernel, Peanut, Rapeseed, Soybeans and Sunflowerseeds.

**Table 05: Major Protein Meals: World Supply and Distribution (Country View)**  
**Million Metric Tons**

	2003/04	2004/05	2005/06	2006/07	2007/08	Jul 2008/09
<b>Production</b>						
China, Peoples Republic	34.16	39.69	43.18	43.18	44.96	47.19
United States	35.21	39.27	39.95	41.58	42.16	41.85
Argentina	21.08	23.35	26.75	27.51	30.18	31.13
Brazil	23.28	23.63	22.73	25.25	26.38	26.29
EU-27	21.14	22.48	22.82	24.22	24.94	25.43
Other	55.65	58.38	60.77	63.04	64.51	66.82
<b>Total</b>	<b>190.52</b>	<b>206.80</b>	<b>216.20</b>	<b>224.77</b>	<b>233.11</b>	<b>238.71</b>
<b>Imports</b>						
EU-27	27.34	27.29	28.27	26.96	29.11	28.44
Korea, Republic of	2.45	2.70	2.95	3.11	3.39	3.41
Thailand	1.88	2.09	2.44	2.73	2.71	2.93
Indonesia	1.88	2.02	2.24	2.41	2.60	2.66
Vietnam	1.15	1.34	1.92	2.54	2.79	2.61
Japan	1.63	1.95	2.06	2.19	2.24	2.24
Mexico	1.00	1.47	1.98	2.03	2.09	2.09
Other	20.48	20.59	22.76	24.51	26.35	27.04
<b>Total</b>	<b>57.81</b>	<b>59.44</b>	<b>64.63</b>	<b>66.47</b>	<b>71.27</b>	<b>71.41</b>
<b>Exports</b>						
Argentina	20.18	21.79	25.20	26.41	28.91	29.78
Brazil	14.81	14.26	12.91	12.72	13.60	13.33
United States	4.94	6.95	7.61	8.25	8.93	8.38
India	4.20	2.72	4.69	4.44	5.38	4.78
Indonesia	1.44	1.84	1.99	2.10	2.24	2.40
Malaysia	1.79	1.93	1.82	2.00	2.11	2.07
Canada	1.65	1.50	1.63	1.63	1.98	2.05
Other	9.61	9.41	9.77	10.79	10.22	10.93
<b>Total</b>	<b>58.62</b>	<b>60.39</b>	<b>65.61</b>	<b>68.34</b>	<b>73.37</b>	<b>73.70</b>
<b>Domestic Consumption</b>						
EU-27	47.83	48.83	49.93	50.34	53.23	52.95
China, Peoples Republic	34.60	40.67	44.81	43.58	45.90	48.40
United States	32.08	33.90	33.85	35.00	35.33	35.54
Brazil	8.61	9.85	10.12	12.26	12.88	13.43
India	8.45	9.55	9.86	10.19	10.47	11.08
Japan	6.20	6.00	5.90	6.02	6.05	6.04
Mexico	4.90	5.32	6.01	6.14	6.18	5.98
Thailand	3.48	3.79	4.06	4.34	4.34	4.66
Korea, Republic of	3.40	3.49	3.64	3.95	4.22	4.20
Indonesia	2.49	2.61	2.90	3.02	3.22	3.37
Other	37.69	40.86	44.35	48.24	49.65	51.00
<b>Total</b>	<b>189.74</b>	<b>204.86</b>	<b>215.42</b>	<b>223.09</b>	<b>231.47</b>	<b>236.65</b>
<b>SME</b>						
EU-27	44.37	44.85	45.75	46.27	48.89	48.30
China, Peoples Republic	32.93	38.75	42.56	41.40	44.03	46.57
United States	31.43	33.23	33.15	34.31	34.55	34.76
Brazil	8.44	9.67	9.98	12.05	12.66	13.22
India	7.43	8.29	8.53	8.78	9.15	9.70
Japan	6.13	5.91	5.82	5.93	5.96	5.94
Mexico	4.65	5.05	5.68	5.84	5.86	5.67
Other	44.59	47.74	51.72	55.74	57.43	59.08
<b>Total</b>	<b>179.97</b>	<b>193.49</b>	<b>203.19</b>	<b>210.32</b>	<b>218.54</b>	<b>223.26</b>
<b>Ending Stocks</b>						
Brazil	1.81	1.58	1.48	1.93	1.95	1.63
Argentina	1.06	1.47	1.80	1.62	1.56	1.53
EU-27	1.13	1.09	1.10	1.05	1.02	1.05
United States	0.27	0.22	0.36	0.39	0.33	0.33
India	0.43	1.15	0.74	0.27	0.26	0.25
Other	2.25	2.44	2.26	2.29	1.96	2.06
<b>Total</b>	<b>6.96</b>	<b>7.94</b>	<b>7.74</b>	<b>7.55</b>	<b>7.09</b>	<b>6.85</b>

Major Protein Meals include Copra, Cottonseed, Fish, Palm Kernel, Peanut, Rapeseed, Soybean, and Sunflower Meal.

**Table 06: Major Vegetable Oils: World Supply and Distribution (Country View)**

Million Metric Tons

	2003/04	2004/05	2005/06	2006/07	2007/08	Jul 2008/09
<b>Production</b>						
Indonesia	14.24	16.05	18.26	19.39	21.24	22.92
Malaysia	15.12	17.15	17.50	17.20	19.52	19.52
China, Peoples Republic	12.04	13.81	14.76	14.17	14.38	15.06
EU-27	11.79	12.61	12.78	13.62	14.04	14.91
United States	8.77	9.76	10.39	10.45	10.81	10.59
Argentina	6.01	6.81	7.63	7.71	8.86	9.16
India	6.66	6.47	6.78	6.49	7.00	7.13
Other	27.79	28.71	30.32	32.49	32.37	34.20
<b>Total</b>	<b>102.42</b>	<b>111.36</b>	<b>118.41</b>	<b>121.50</b>	<b>128.21</b>	<b>133.48</b>
<b>Imports</b>						
China, Peoples Republic	7.12	6.69	6.96	8.50	9.78	10.39
EU-27	5.64	6.80	8.21	8.59	7.90	8.21
India	4.56	5.67	4.91	5.53	5.36	5.81
United States	1.91	1.83	2.39	2.53	2.94	3.23
Pakistan	1.28	1.63	1.72	2.25	2.47	2.55
Egypt	0.82	0.99	1.23	1.21	1.38	1.55
Bangladesh	0.89	0.99	1.12	1.29	1.36	1.45
Iran	1.12	1.16	1.20	1.20	1.28	1.34
Turkey	0.52	0.75	1.21	0.59	0.99	1.01
Russian Federation	0.79	0.97	0.87	0.86	0.93	0.94
Other	12.38	13.00	14.18	14.37	15.20	15.92
<b>Total</b>	<b>37.02</b>	<b>40.49</b>	<b>43.98</b>	<b>46.91</b>	<b>49.56</b>	<b>52.38</b>
<b>Exports</b>						
Indonesia	9.12	11.40	13.35	13.39	15.54	16.95
Malaysia	12.46	13.63	13.75	14.10	14.73	14.88
Argentina	5.30	5.99	6.89	6.88	7.52	7.59
Brazil	2.79	2.55	2.55	2.53	2.53	2.36
Ukraine	0.98	0.74	1.61	1.90	1.24	1.57
United States	0.74	0.84	0.90	1.31	1.74	1.48
Canada	1.00	0.98	1.12	1.30	1.37	1.42
Other	6.46	6.30	6.86	7.09	7.08	7.76
<b>Total</b>	<b>38.86</b>	<b>42.43</b>	<b>47.03</b>	<b>48.51</b>	<b>51.74</b>	<b>54.00</b>
<b>Domestic Consumption</b>						
China, Peoples Republic	19.03	20.53	21.51	22.46	24.12	25.32
EU-27	16.05	17.92	20.15	21.24	21.23	22.06
India	11.16	11.57	12.09	12.01	12.45	12.83
United States	10.07	10.45	11.15	11.74	12.06	12.47
Indonesia	4.74	4.98	5.37	5.59	5.79	5.99
Malaysia	3.56	4.04	4.46	4.78	5.25	5.62
Brazil	3.43	3.59	3.67	4.20	4.59	4.74
Pakistan	2.01	2.44	2.58	3.33	3.50	3.69
Russian Federation	2.39	2.71	2.75	2.88	3.01	2.99
Japan	2.28	2.26	2.19	2.19	2.21	2.28
Mexico	1.83	1.91	1.99	2.04	2.08	2.09
Turkey	1.35	1.54	1.79	1.66	1.86	1.95
Egypt	1.09	1.18	1.39	1.51	1.65	1.78
Bangladesh	1.08	1.14	1.23	1.43	1.53	1.62
Argentina	0.67	0.77	0.80	0.99	1.40	1.56
Other	19.57	20.83	22.09	22.69	23.80	24.93
<b>Total</b>	<b>100.29</b>	<b>107.85</b>	<b>115.20</b>	<b>120.73</b>	<b>126.52</b>	<b>131.92</b>
<b>Ending Stocks</b>						
Malaysia	1.57	1.81	2.33	1.50	1.94	1.83
EU-27	1.88	2.03	1.91	1.86	1.55	1.60
United States	0.79	1.09	1.82	1.74	1.70	1.57
Indonesia	1.40	1.11	0.69	1.13	1.09	1.11
Argentina	0.59	0.64	0.58	0.42	0.36	0.37
Other	2.47	3.59	3.10	2.95	2.47	2.56
<b>Total</b>	<b>8.70</b>	<b>10.27</b>	<b>10.43</b>	<b>9.60</b>	<b>9.12</b>	<b>9.04</b>

Major Vegetable Oils includes Coconut, Cottonseed, Olive, Palm, Palm Kernel, Peanut, Rapeseed, Soybean, and Sunflowerseed oil.

**Table 07: Soybeans: World Supply and Distribution**  
**Thousand Metric Tons**

	2003/04	2004/05	2005/06	2006/07	2007/08	Jul 2008/09
<b>Production</b>						
United States	66,778	85,013	83,368	86,770	70,358	81,647
Brazil	51,000	53,000	57,000	59,000	61,000	64,000
Argentina	33,000	39,000	40,500	48,800	47,000	48,000
China, Peoples Republic	15,394	17,400	16,350	15,200	13,500	16,000
India	6,800	5,850	7,000	7,690	9,300	8,700
Paraguay	3,911	4,040	3,640	6,200	6,800	7,200
Canada	2,263	3,042	3,161	3,460	2,700	3,060
Other	7,473	8,413	9,512	9,441	8,138	9,190
<b>Total</b>	<b>186,619</b>	<b>215,758</b>	<b>220,531</b>	<b>236,561</b>	<b>218,796</b>	<b>237,797</b>
<b>Imports</b>						
China, Peoples Republic	16,933	25,802	28,317	28,726	34,400	35,500
EU-27	14,675	14,540	13,943	15,289	15,300	14,150
Japan	4,688	4,295	3,962	4,094	4,050	4,050
Mexico	3,797	3,640	3,667	3,940	3,850	3,640
Argentina	537	692	584	1,986	2,450	2,650
Taiwan	2,217	2,256	2,498	2,436	2,250	2,400
Thailand	1,407	1,517	1,473	1,532	1,600	1,650
Indonesia	1,059	1,112	1,187	1,309	1,400	1,450
Korea, Republic of	1,368	1,240	1,190	1,231	1,250	1,260
Turkey	603	858	986	1,172	1,200	1,200
Other	6,716	7,539	6,239	7,362	8,219	8,429
<b>Total</b>	<b>54,000</b>	<b>63,491</b>	<b>64,046</b>	<b>69,077</b>	<b>75,969</b>	<b>76,379</b>
<b>Exports</b>						
Brazil	20,417	20,137	25,911	23,485	25,200	28,850
United States	24,128	29,860	25,579	30,428	31,162	27,216
Argentina	6,741	9,568	7,249	9,559	12,200	12,200
Paraguay	2,776	2,888	2,115	4,200	4,360	4,575
Canada	914	1,124	1,318	1,746	1,720	1,620
Other	1,228	1,197	1,411	1,848	1,553	1,821
<b>Total</b>	<b>56,204</b>	<b>64,774</b>	<b>63,583</b>	<b>71,266</b>	<b>76,195</b>	<b>76,282</b>
<b>Crush</b>						
United States	41,632	46,160	47,324	49,198	50,077	49,805
China, Peoples Republic	25,439	30,362	34,500	35,477	38,400	40,800
Argentina	25,040	27,313	31,888	33,586	36,100	37,200
Brazil	29,323	29,252	28,285	31,110	32,500	32,500
EU-27	14,084	14,350	13,670	14,670	14,755	13,545
India	5,534	5,030	5,990	6,615	7,978	7,460
Mexico	3,889	3,729	3,823	3,985	3,900	3,705
Japan	3,536	3,149	2,820	2,925	2,855	2,840
Paraguay	985	979	1,220	2,055	2,325	2,475
Taiwan	2,046	2,013	2,190	2,161	2,000	2,125
Bolivia	1,676	1,815	1,843	1,745	1,180	1,600
Canada	1,565	1,545	1,497	1,524	1,410	1,500
Thailand	1,385	1,500	1,413	1,406	1,390	1,400
Iran	1,013	1,129	1,254	1,030	1,170	1,235
Egypt	245	721	800	1,190	1,200	1,133
Other	6,372	6,600	6,696	7,449	7,861	8,013
<b>Total</b>	<b>163,764</b>	<b>175,647</b>	<b>185,213</b>	<b>196,126</b>	<b>205,101</b>	<b>207,336</b>
<b>Ending Stocks</b>						
Argentina	14,615	15,976	16,473	22,606	22,240	21,952
Brazil	15,507	16,750	16,733	18,281	18,781	18,591
United States	3,059	6,960	12,229	15,617	3,411	3,804
China, Peoples Republic	2,100	4,700	4,573	2,656	1,781	1,856
EU-27	906	758	740	1,123	1,000	908
Other	1,638	2,395	2,603	2,179	1,629	1,756
<b>Total</b>	<b>37,825</b>	<b>47,539</b>	<b>53,351</b>	<b>62,462</b>	<b>48,842</b>	<b>48,867</b>

Most countries are on an October/September Marketing Year (MY). The United States, Mexico, and Thailand are on a September/August MY. Canada is on an August/July MY. Paraguay is on a March/February MY and Turkey is on an March/February MY.



**Table 08: Soybean Meal: World Supply and Distribution**  
**Thousand Metric Tons**

	2003/04	2004/05	2005/06	2006/07	2007/08	Jul 2008/09
<b>Production</b>						
United States	32,953	36,936	37,416	39,058	39,679	39,404
China, Peoples Republic	20,190	24,026	27,296	28,090	30,400	32,300
Argentina	19,761	21,601	25,012	26,061	28,144	29,000
Brazil	22,360	22,658	21,892	24,100	25,175	25,175
EU-27	11,084	11,300	10,760	11,550	11,620	10,670
India	4,422	4,005	4,772	5,268	6,354	5,955
Mexico	3,090	2,958	3,030	3,158	3,090	2,935
Other	14,812	15,360	15,591	16,997	16,906	17,614
<b>Total</b>	<b>128,672</b>	<b>138,844</b>	<b>145,769</b>	<b>154,282</b>	<b>161,368</b>	<b>163,053</b>
<b>Imports</b>						
EU-27	22,012	21,910	22,823	22,075	24,400	23,500
Indonesia	1,665	1,849	2,071	2,237	2,400	2,450
Thailand	1,662	1,779	2,052	2,253	2,200	2,400
Vietnam	963	1,152	1,722	2,190	2,400	2,200
Korea, Republic of	1,307	1,462	1,773	1,870	1,850	1,900
Mexico	792	1,251	1,728	1,780	1,850	1,850
Japan	1,196	1,503	1,601	1,737	1,750	1,740
Philippines	1,163	1,377	1,272	1,418	1,560	1,600
Canada	1,070	1,160	1,353	1,430	1,550	1,560
South Africa, Republic of	613	678	819	950	1,000	1,050
Other	12,568	11,911	13,704	14,379	15,475	15,978
<b>Total</b>	<b>45,011</b>	<b>46,032</b>	<b>50,918</b>	<b>52,319</b>	<b>56,435</b>	<b>56,228</b>
<b>Exports</b>						
Argentina	19,221	20,650	24,197	25,625	27,567	28,345
Brazil	14,792	14,256	12,895	12,715	13,600	13,325
United States	4,690	6,659	7,301	7,971	8,618	8,074
India	3,310	1,794	3,679	3,461	4,310	3,750
Paraguay	1,082	644	836	1,564	1,715	1,840
Other	2,473	2,609	2,643	2,889	2,391	2,426
<b>Total</b>	<b>45,568</b>	<b>46,612</b>	<b>51,551</b>	<b>54,225</b>	<b>58,201</b>	<b>57,760</b>
<b>Domestic Consumption</b>						
EU-27	32,729	32,680	32,875	33,092	35,562	33,720
China, Peoples Republic	19,547	23,437	27,776	27,255	30,050	32,100
United States	28,530	30,446	30,114	31,200	31,253	31,480
Brazil	7,696	8,878	9,300	11,108	11,670	12,300
Mexico	3,865	4,208	4,751	4,933	4,935	4,785
Japan	4,175	3,978	3,846	3,992	3,983	3,946
Thailand	2,766	2,985	3,196	3,330	3,301	3,563
Korea, Republic of	2,194	2,196	2,381	2,661	2,615	2,635
Canada	2,254	2,318	2,400	2,493	2,521	2,590
Indonesia	1,650	1,839	2,085	2,236	2,390	2,443
Vietnam	963	1,152	1,722	2,190	2,400	2,200
India	1,123	1,379	1,660	1,945	2,045	2,198
Iran	1,631	1,091	1,488	1,638	1,794	1,895
Taiwan	1,719	1,705	1,815	1,767	1,667	1,767
Philippines	1,376	1,407	1,434	1,528	1,675	1,708
Other	16,309	17,519	18,939	20,761	21,986	22,545
<b>Total</b>	<b>128,527</b>	<b>137,218</b>	<b>145,782</b>	<b>152,129</b>	<b>159,847</b>	<b>161,875</b>
<b>Ending Stocks</b>						
Brazil	1,801	1,577	1,469	1,913	1,943	1,623
Argentina	1,017	1,423	1,672	1,517	1,464	1,459
EU-27	858	859	866	852	860	860
United States	191	156	285	314	272	272
Japan	238	219	173	193	181	184
Other	1,347	2,264	1,387	1,310	1,134	1,102
<b>Total</b>	<b>5,452</b>	<b>6,498</b>	<b>5,852</b>	<b>6,099</b>	<b>5,854</b>	<b>5,500</b>

Most countries are on an October/September Marketing Year (MY). The Mexico and Thailand are on a September/August MY. Canada is on an August/July MY. Paraguay is on a March/February MY. Vietnam and the Philippines are on a January/December MY and Bolivia is on a March/February MY.

**Table 09: Soybean Oil: World Supply and Distribution**  
**Thousand Metric Tons**

	2003/04	2004/05	2005/06	2006/07	2007/08	Jul 2008/09
<b>Production</b>						
United States	7,748	8,782	9,248	9,294	9,682	9,462
China, Peoples Republic	4,535	5,421	6,149	6,340	6,860	7,300
Argentina	4,729	5,128	5,998	6,424	6,928	7,140
Brazil	5,588	5,615	5,430	5,950	6,225	6,225
EU-27	2,531	2,575	2,460	2,640	2,656	2,438
India	996	900	1,050	1,180	1,424	1,335
Mexico	663	635	657	685	670	645
Other	3,393	3,530	3,603	3,918	3,890	4,089
<b>Total</b>	<b>30,183</b>	<b>32,586</b>	<b>34,595</b>	<b>36,431</b>	<b>38,335</b>	<b>38,634</b>
<b>Imports</b>						
China, Peoples Republic	2,728	1,728	1,516	2,404	3,000	3,100
EU-27	57	181	717	969	1,000	950
India	906	2,026	1,727	1,403	900	850
Iran	735	741	600	606	660	670
Morocco	328	318	372	382	420	425
Venezuela	302	247	285	364	325	370
Bangladesh	332	228	262	327	347	367
Egypt	188	173	242	114	375	350
Algeria	20	299	293	271	340	325
South Africa, Republic of	220	235	235	235	300	325
Other	2,517	2,731	2,770	2,623	2,848	2,988
<b>Total</b>	<b>8,333</b>	<b>8,907</b>	<b>9,019</b>	<b>9,698</b>	<b>10,515</b>	<b>10,720</b>
<b>Exports</b>						
Argentina	4,238	4,757	5,597	5,970	6,000	6,000
Brazil	2,718	2,414	2,466	2,462	2,450	2,300
United States	425	600	523	857	1,429	1,202
Paraguay	251	112	207	383	400	425
EU-27	556	525	269	243	250	200
Bolivia	192	215	220	200	190	190
Malaysia	68	104	89	90	88	101
Other	379	402	455	497	447	452
<b>Total</b>	<b>8,827</b>	<b>9,129</b>	<b>9,826</b>	<b>10,702</b>	<b>11,254</b>	<b>10,870</b>
<b>Domestic Consumption</b>						
China, Peoples Republic	7,157	7,203	7,607	8,600	9,850	10,300
United States	7,650	7,911	8,147	8,420	8,346	8,392
Brazil	2,954	3,115	3,133	3,490	3,850	4,000
EU-27	2,107	2,210	2,915	3,360	3,411	3,235
India	1,885	2,627	2,918	2,598	2,434	2,180
Argentina	394	396	397	569	982	1,138
Mexico	747	781	779	820	848	845
Iran	813	801	800	706	790	812
Japan	720	639	573	577	565	588
Egypt	233	303	351	363	591	554
Morocco	422	429	449	458	497	513
Korea, Republic of	405	406	418	448	476	485
Bangladesh	366	275	276	336	371	393
Taiwan	437	405	396	404	374	379
Venezuela	306	249	295	368	330	375
Other	3,463	3,940	4,115	4,074	4,286	4,403
<b>Total</b>	<b>30,059</b>	<b>31,690</b>	<b>33,569</b>	<b>35,591</b>	<b>38,001</b>	<b>38,592</b>
<b>Ending Stocks</b>						
United States	488	771	1,365	1,399	1,329	1,220
Argentina	511	486	490	375	321	323
Brazil	365	454	313	315	310	305
China, Peoples Republic	341	247	200	250	210	260
EU-27	180	201	194	200	195	148
Other	518	918	734	593	362	363
<b>Total</b>	<b>2,403</b>	<b>3,077</b>	<b>3,296</b>	<b>3,132</b>	<b>2,727</b>	<b>2,619</b>

Most countries are on an October/September Marketing Year (MY). Mexico is on a September/August MY. Peru is on an January/December MY and Paraguay and Bolivia are on a March/February MY.

**Table 10: Soybeans and Products: World Trade**  
**Thousand Metric Tons**

Marketing Year	Meal, Soybean			Oil, Soybean			Oilseed, Soybean			
	2006/07	2007/08	2008/09	2006/07	2007/08	2008/09	2006/07	2007/08	2008/09	
<b>Exports</b>										
North America	8,115	8,764	8,230	882	1,454	1,227	32,175	32,882	28,836	
Canada	(Aug-Jul)	138	140	150	25	25	25	1,746	1,720	1,620
United States	(Sep-Aug)	7,971	8,618	8,074	857	1,429	1,202	30,428	31,162	27,216
South America	0	43,682	44,468	9,023	9,046	8,921	5	42,655	46,739	
Argentina	(Oct-Sep)	25,625	27,567	28,345	5,970	6,000	6,000	9,559	12,200	12,200
Brazil	(Oct-Sep)	12,715	13,600	13,325	2,462	2,450	2,300	23,485	25,200	28,850
Paraguay	(Mar-Feb)	1,564	1,715	1,840	383	400	425	4,200	4,360	4,575
South Asia	1	4,311	3,751	0	10	10	7	5	5	
India	(Oct-Sep)	3,461	4,310	3,750	10	10	10	7	5	5
Other	46,109	1,444	1,311	797	744	712	39,079	653	702	
<b>World Total</b>	54,225	58,201	57,760	10,702	11,254	10,870	71,266	76,195	76,282	
<b>Imports</b>										
European Union	0	24,400	23,500	0	1,000	950	0	15,300	14,150	
East Asia	132	4,085	4,135	352	3,480	3,615	7,761	42,010	43,270	
China, Peoples Republic of	(Oct-Sep)	32	300	300	2,404	3,000	3,100	28,726	34,400	35,500
Japan	(Oct-Sep)	1,737	1,750	1,740	50	40	55	4,094	4,050	4,050
Korea, Republic of	(Oct-Sep)	1,870	1,850	1,900	302	310	318	1,231	1,250	1,260
Taiwan	(Oct-Sep)	67	90	100	20	15	15	2,436	2,250	2,400
Southeast Asia	9,068	9,580	9,706	237	238	274	0	3,787	3,908	
Indonesia	(Oct-Sep)	2,237	2,400	2,450	18	16	17	1,309	1,400	1,450
Malaysia	(Oct-Sep)	950	1,000	1,035	114	100	125	444	550	550
Philippines	(Jan-Dec)	1,418	1,560	1,600	12	17	16	167	130	151
Thailand	(Sep-Aug)	2,253	2,200	2,400	0	0	0	1,532	1,600	1,650
Vietnam	(Jan-Dec)	2,190	2,400	2,200	59	70	80	73	85	85
North America	3,352	3,550	3,560	233	283	314	4,427	4,332	4,262	
Canada	(Aug-Jul)	1,430	1,550	1,560	79	80	91	241	210	350
Mexico	(Sep-Aug)	1,780	1,850	1,850	137	180	200	3,940	3,850	3,640
South America	1,612	4,165	4,294	976	1,021	1,087	203	3,530	3,745	
Brazil	(Oct-Sep)	167	125	130	4	70	70	53	150	160
Colombia	(Oct-Sep)	741	800	850	177	180	185	319	350	375
Central America	8	883	921	18	172	181	231	315	325	
Caribbean	95	825	850	25	290	300	185	199	205	
Middle East	205	2,755	2,961	41	800	797	3,524	3,724	3,780	
Iran	(Oct-Sep)	833	880	930	606	660	670	835	1,000	1,025
Israel	(Oct-Sep)	135	119	121	10	12	15	576	590	600
Syria	(Jan-Dec)	365	385	411	3	3	4	417	374	380
Turkey	(Nov-Oct)	339	364	414	66	65	45	1,172	1,200	1,200
North Africa	221	1,810	1,897	902	1,285	1,260	1,661	1,700	1,700	
Egypt	(Oct-Sep)	407	390	452	114	375	350	1,217	1,200	1,150
Other	37,626	4,382	4,404	6,914	1,946	1,942	51,085	1,072	1,034	
<b>World Total</b>	52,319	56,435	56,228	9,698	10,515	10,720	69,077	75,969	76,379	

**Table 11: Palm Oil: World Supply and Distribution**  
**Thousand Metric Tons**

	2003/04	2004/05	2005/06	2006/07	2007/08	Jul 2008/09
<b>Production</b>						
Indonesia	11,970	13,560	15,560	16,600	18,300	19,700
Malaysia	13,420	15,194	15,485	15,290	17,400	17,400
Thailand	840	820	784	1,170	1,050	1,400
Colombia	614	647	690	770	830	830
Nigeria	780	790	800	810	820	820
Other	2,377	2,509	2,662	2,697	2,722	2,752
<b>Total</b>	<b>30,001</b>	<b>33,520</b>	<b>35,981</b>	<b>37,337</b>	<b>41,122</b>	<b>42,902</b>
<b>Imports</b>						
China, Peoples Republic	3,710	4,363	4,975	5,139	5,800	6,200
India	3,486	3,525	2,899	3,800	4,300	4,700
EU-27	3,371	4,028	4,272	4,000	4,000	4,050
Pakistan	1,271	1,565	1,703	2,218	2,420	2,500
Bangladesh	528	757	847	950	1,000	1,070
United States	281	345	600	700	790	960
Egypt	459	616	754	780	750	925
Russian Federation	402	594	546	524	650	620
Vietnam	118	193	198	358	440	575
Iran	353	351	485	388	500	550
Other	7,339	7,583	8,426	7,983	8,633	8,946
<b>Total</b>	<b>21,318</b>	<b>23,920</b>	<b>25,705</b>	<b>26,840</b>	<b>29,283</b>	<b>31,096</b>
<b>Exports</b>						
Indonesia	7,856	9,621	11,696	11,450	13,600	14,800
Malaysia	11,602	12,634	12,780	12,900	13,650	13,840
Thailand	166	81	205	283	250	500
Papua New Guinea	293	327	330	360	380	405
Jordan	355	333	265	280	300	300
Other	1,341	1,497	1,436	1,578	1,533	1,530
<b>Total</b>	<b>21,613</b>	<b>24,493</b>	<b>26,712</b>	<b>26,851</b>	<b>29,713</b>	<b>31,375</b>
<b>Domestic Consumption</b>						
China, Peoples Republic	3,710	4,363	4,975	5,139	5,800	6,200
Indonesia	3,779	4,015	4,361	4,641	4,801	4,915
India	3,598	3,406	3,125	3,769	4,380	4,725
Malaysia	2,234	2,689	3,037	3,330	3,725	3,945
EU-27	3,306	3,916	4,171	3,869	3,860	3,910
Pakistan	1,291	1,560	1,708	2,218	2,420	2,500
Bangladesh	540	747	821	950	1,015	1,085
Nigeria	961	985	1,005	1,010	977	977
United States	234	322	567	692	779	965
Egypt	639	616	754	780	750	925
Thailand	727	776	615	765	855	910
Russian Federation	401	584	536	529	650	620
Vietnam	108	188	178	338	432	565
Iran	353	351	485	388	500	550
Japan	451	492	499	521	530	550
Colombia	449	437	492	483	540	540
Turkey	335	419	432	421	500	520
Burma, Union of	224	278	304	330	365	375
Mexico	306	307	351	357	362	362
South Africa, Republic of	266	273	283	296	323	348
Other	5,301	5,770	6,417	6,474	6,916	7,236
<b>Total</b>	<b>29,213</b>	<b>32,494</b>	<b>35,116</b>	<b>37,300</b>	<b>40,480</b>	<b>42,723</b>
<b>Ending Stocks</b>						
Malaysia	1,318	1,527	1,941	1,301	1,696	1,611
Indonesia	1,120	1,053	567	1,086	1,000	1,000
Thailand	95	105	84	221	181	186
EU-27	198	200	200	180	180	180
India	50	208	20	100	65	85
Other	331	472	611	561	539	499
<b>Total</b>	<b>3,112</b>	<b>3,565</b>	<b>3,423</b>	<b>3,449</b>	<b>3,661</b>	<b>3,561</b>

	<b>2003/04</b>	<b>2004/05</b>	<b>2005/06</b>	<b>2006/07</b>	<b>2007/08</b>	<b>Jul 2008/09</b>
--	----------------	----------------	----------------	----------------	----------------	------------------------

Most countries are based on a October/September Marketing Year (MY). EU-25, Philippines, and Thailand are on an January/December and Turkey is on a November/October MY.

**Table 12: Rapeseed and Products: World Supply and Distribution**  
**Thousand Metric Tons**

Marketing Year		Meal, Rapeseed			Oil, Rapeseed			Oilseed, Rapeseed			
		2006/07	2007/08	2008/09	2006/07	2007/08	2008/09	2006/07	2007/08	2008/09	
<b>Production</b>											
	China, Peoples Republic of	(Oct-Sep)	7,205	6,760	6,855	4,067	3,816	3,870	10,966	10,375	11,000
	India	(Oct-Sep)	3,410	3,150	3,150	2,135	1,968	1,968	5,800	5,450	5,800
	Canada	(Aug-Jul)	2,055	2,280	2,390	1,500	1,660	1,735	9,000	8,750	9,800
	Japan	(Oct-Sep)	1,255	1,271	1,305	890	902	925	1	1	1
	EU-27	(Jul-Jun)	8,970	10,280	11,050	6,465	7,413	7,960	16,087	18,320	19,008
	Other		3,130	3,452	3,727	2,086	2,308	2,495	3,303	4,401	6,365
	<b>World Total</b>		26,025	27,193	28,477	17,143	18,067	18,953	45,157	47,297	51,974
<b>Imports</b>											
	China, Peoples Republic of	(Oct-Sep)	328	120	150	330	400	500	961	850	400
	India	(Oct-Sep)	0	0	0	0	0	0	25	25	30
	Canada	(Aug-Jul)	2	3	3	136	60	60	203	200	200
	Japan	(Oct-Sep)	64	65	75	18	12	12	2,165	2,250	2,300
	EU-27	(Jul-Jun)	106	115	110	727	260	250	432	550	1,550
	Other		2,515	3,019	3,038	987	1,330	1,398	3,181	3,883	4,017
	<b>World Total</b>		3,015	3,322	3,376	2,198	2,062	2,220	6,967	7,758	8,497
<b>Exports</b>											
	China, Peoples Republic of	(Oct-Sep)	54	70	70	54	10	10	1	1	1
	India	(Oct-Sep)	910	900	850	2	1	1	5	4	4
	Canada	(Aug-Jul)	1,482	1,825	1,885	1,265	1,340	1,395	5,430	5,750	5,100
	Japan	(Oct-Sep)	0	0	0	0	0	0	0	0	0
	EU-27	(Jul-Jun)	64	170	150	51	80	125	75	375	225
	Other		393	544	619	571	472	513	1,100	2,112	3,513
	<b>World Total</b>		2,903	3,509	3,574	1,943	1,903	2,044	6,611	8,242	8,843
<b>Domestic Consumption</b>											
	China, Peoples Republic of	(Oct-Sep)	7,479	6,810	6,935	4,343	4,206	4,360	11,926	11,224	11,399
	India	(Oct-Sep)	2,830	2,260	2,315	2,133	1,967	1,967	6,449	5,866	5,876
	Canada	(Aug-Jul)	473	507	510	373	383	395	3,966	4,347	4,550
	Japan	(Oct-Sep)	1,330	1,339	1,366	918	921	937	2,215	2,243	2,305
	EU-27	(Jul-Jun)	9,023	10,209	11,000	7,144	7,612	8,055	16,513	18,772	20,119
	Other		5,257	5,926	6,146	2,612	3,196	3,372	5,439	6,251	6,617
	<b>World Total</b>		26,392	27,051	28,272	17,523	18,285	19,086	46,508	48,703	50,866
<b>Ending Stocks</b>											
	China, Peoples Republic of	(Oct-Sep)	0	0	0	0	0	0	0	0	0
	India	(Oct-Sep)	95	85	70	0	0	0	495	100	50
	Canada	(Aug-Jul)	116	67	65	47	44	49	1,892	745	1,095
	Japan	(Oct-Sep)	29	26	40	38	31	31	132	140	136
	EU-27	(Jul-Jun)	84	100	110	189	170	200	1,658	1,381	1,595
	Other		68	69	69	162	132	121	530	451	699
	<b>World Total</b>		392	347	354	436	377	401	4,707	2,817	3,575

7/11/2008 8:52:10 AM

**Table 13: Sunflowerseed and Products World Supply and Distribution**  
**Thousand Metric Tons**

		Oilseed, Sunflowerseed			Meal, Sunflowerseed			Oil, Sunflowerseed		
Marketing Year		2006/07	2007/08	2008/09	2006/07	2007/08	2008/09	2006/07	2007/08	2008/09
<b>Production</b>										
Argentina	(Mar-Feb)	3,500	4,630	4,772	1,285	1,891	1,970	1,202	1,855	1,930
Russian Federation	(Sep-Aug)	6,750	5,650	6,400	2,220	1,917	2,138	2,465	2,130	2,375
Turkey	(Sep-Aug)	850	700	850	471	424	519	515	465	570
Ukraine	(Sep-Aug)	5,300	4,200	5,200	2,025	1,700	2,020	2,050	1,725	2,050
EU-27	(Oct-Sep)	6,502	4,781	6,482	3,000	2,325	3,028	2,200	1,700	2,175
Other		6,910	7,220	8,081	2,512	2,279	2,677	2,151	1,972	2,296
<b>World Total</b>		<b>29,812</b>	<b>27,181</b>	<b>31,785</b>	<b>11,513</b>	<b>10,536</b>	<b>12,352</b>	<b>10,583</b>	<b>9,847</b>	<b>11,396</b>
<b>Imports</b>										
Argentina	(Mar-Feb)	26	20	20	0	0	0	2	0	0
Russian Federation	(Sep-Aug)	10	10	10	35	20	20	123	50	100
Turkey	(Sep-Aug)	408	380	500	323	320	370	113	410	430
Ukraine	(Sep-Aug)	6	5	5	0	0	0	0	0	0
EU-27	(Oct-Sep)	570	250	768	1,770	1,535	1,750	1,184	1,000	1,250
Other		634	257	273	1,188	1,076	1,070	1,866	1,389	1,529
<b>World Total</b>		<b>1,654</b>	<b>922</b>	<b>1,576</b>	<b>3,316</b>	<b>2,951</b>	<b>3,210</b>	<b>3,288</b>	<b>2,849</b>	<b>3,309</b>
<b>Exports</b>										
Argentina	(Mar-Feb)	59	100	67	766	1,325	1,415	870	1,480	1,540
Russian Federation	(Sep-Aug)	162	40	130	866	640	780	689	400	620
Turkey	(Sep-Aug)	2	3	3	0	0	0	9	78	78
Ukraine	(Sep-Aug)	336	75	300	1,483	1,145	1,445	1,875	1,213	1,528
EU-27	(Oct-Sep)	749	425	625	146	75	148	149	120	125
Other		573	637	684	181	165	171	268	259	260
<b>World Total</b>		<b>1,881</b>	<b>1,280</b>	<b>1,809</b>	<b>3,442</b>	<b>3,350</b>	<b>3,959</b>	<b>3,860</b>	<b>3,550</b>	<b>4,151</b>
<b>Domestic Consumption</b>										
Argentina	(Mar-Feb)	3,083	4,553	4,738	549	567	580	372	377	382
Russian Federation	(Sep-Aug)	6,530	5,648	6,275	1,370	1,337	1,368	1,884	1,825	1,825
Turkey	(Sep-Aug)	1,218	1,097	1,340	794	744	889	719	813	922
Ukraine	(Sep-Aug)	4,903	4,130	4,909	542	555	575	326	460	501
EU-27	(Oct-Sep)	6,355	4,838	6,428	4,644	3,839	4,614	3,278	2,734	3,245
Other		7,279	6,842	7,596	3,509	3,191	3,576	3,726	3,096	3,563
<b>World Total</b>		<b>29,368</b>	<b>27,108</b>	<b>31,286</b>	<b>11,408</b>	<b>10,233</b>	<b>11,602</b>	<b>10,305</b>	<b>9,305</b>	<b>10,438</b>
<b>Ending Stocks</b>										
Argentina	(Mar-Feb)	1,655	1,652	1,639	91	90	65	36	34	42
Russian Federation	(Sep-Aug)	314	286	291	44	4	14	110	65	95
Turkey	(Sep-Aug)	56	36	43	0	0	0	40	24	24
Ukraine	(Sep-Aug)	75	75	71	5	5	5	13	65	86
EU-27	(Oct-Sep)	630	398	595	85	31	47	240	86	141
Other		313	311	385	16	15	15	77	83	85
<b>World Total</b>		<b>3,043</b>	<b>2,758</b>	<b>3,024</b>	<b>241</b>	<b>145</b>	<b>146</b>	<b>516</b>	<b>357</b>	<b>473</b>

**Table 14: Minor Vegetable Oil Supply and Distribution**  
**Thousand Metric Tons**

Marketing Year		Oil, Peanut			Oil, Cottonseed			Oil, Olive		
		2006/07	2007/08	2008/09	2006/07	2007/08	2008/09	2006/07	2007/08	2008/09
<b>Production</b>										
China, Peoples Republic of	(Oct-Sep)	2,007	2,020	2,135	1,525	1,540	1,520	nr	nr	nr
India	(Oct-Sep)	1,315	1,625	1,695	942	1,088	1,159	nr	nr	nr
Turkey	(Nov-Oct)	4	4	4	230	201	152	175	170	175
United States	(Aug-Jul)	76	73	80	385	392	386	1	1	1
EU-27	(Oct-Sep)	16	16	16	56	60	48	2,210	2,170	2,250
Other		1,041	1,043	1,070	1,739	1,665	1,692	521	497	542
<b>World Total</b>		<b>4,459</b>	<b>4,781</b>	<b>5,000</b>	<b>4,877</b>	<b>4,946</b>	<b>4,957</b>	<b>2,907</b>	<b>2,838</b>	<b>2,968</b>
<b>Imports</b>										
China, Peoples Republic of	(Oct-Sep)	11	8	6	0	0	0	nr	nr	nr
India	(Oct-Sep)	0	0	0	0	0	0	nr	nr	nr
Turkey	(Nov-Oct)	0	0	0	2	4	4	0	0	0
United States	(Aug-Jul)	48	45	50	1	0	0	267	279	289
EU-27	(Oct-Sep)	103	92	96	8	5	5	221	225	235
Other		21	26	20	97	100	108	170	168	173
<b>World Total</b>		<b>183</b>	<b>171</b>	<b>172</b>	<b>108</b>	<b>109</b>	<b>117</b>	<b>658</b>	<b>672</b>	<b>697</b>
<b>Exports</b>										
China, Peoples Republic of	(Oct-Sep)	11	10	10	11	8	10	nr	nr	nr
India	(Oct-Sep)	0	30	40	0	0	0	nr	nr	nr
Turkey	(Nov-Oct)	0	0	0	6	1	1	36	80	85
United States	(Aug-Jul)	5	2	6	63	84	59	4	4	4
EU-27	(Oct-Sep)	3	2	2	1	1	1	408	410	412
Other		158	137	151	85	97	75	256	207	247
<b>World Total</b>		<b>177</b>	<b>181</b>	<b>209</b>	<b>166</b>	<b>191</b>	<b>146</b>	<b>704</b>	<b>701</b>	<b>748</b>
<b>Domestic Consumption</b>										
China, Peoples Republic of	(Oct-Sep)	2,007	2,018	2,131	1,514	1,532	1,510	nr	nr	nr
India	(Oct-Sep)	1,370	1,565	1,650	947	1,110	1,147	nr	nr	nr
Turkey	(Nov-Oct)	4	4	4	211	204	170	80	85	90
United States	(Aug-Jul)	120	115	124	324	297	344	264	276	286
EU-27	(Oct-Sep)	112	110	110	63	64	52	2,030	2,060	2,070
Other		936	944	939	1,750	1,709	1,730	458	467	475
<b>World Total</b>		<b>4,549</b>	<b>4,756</b>	<b>4,958</b>	<b>4,809</b>	<b>4,916</b>	<b>4,953</b>	<b>2,832</b>	<b>2,888</b>	<b>2,921</b>
<b>Ending Stocks</b>										
China, Peoples Republic of	(Oct-Sep)	0	0	0	0	0	0	nr	nr	nr
India	(Oct-Sep)	15	45	50	55	33	45	nr	nr	nr
Turkey	(Nov-Oct)	0	0	0	15	15	0	84	89	89
United States	(Aug-Jul)	10	11	11	45	56	39	0	0	0
EU-27	(Oct-Sep)	9	5	5	3	3	3	943	868	871
Other		21	9	9	83	42	37	155	146	139
<b>World Total</b>		<b>55</b>	<b>70</b>	<b>75</b>	<b>201</b>	<b>149</b>	<b>124</b>	<b>1,182</b>	<b>1,103</b>	<b>1,099</b>



**Oil, Peanut****Oil, Cottonseed****Oil, Olive**

<b>Marketing Year</b>	<b>2006/07</b>	<b>2007/08</b>	<b>2008/09</b>	<b>2006/07</b>	<b>2007/08</b>	<b>2008/09</b>	<b>2006/07</b>	<b>2007/08</b>	<b>2008/09</b>
-----------------------	----------------	----------------	----------------	----------------	----------------	----------------	----------------	----------------	----------------

Turkey's Cottonseed Oil Marketing Year (MY) is October/September. China and India are not included in the Olive Oil database. The EU-25's Olive Oil MY is November/October and the U.S. MY for Olive Oil is October/September.

**Table 15: World Oilseeds and Products Supply and Distribution**

Million Metric Tons

	Area Harvested	Beginning Stocks	Production	Imports	Total Supply	Exports	Food Use Dom. Cons.	Domestic Consumpti	Ending Stocks
<b>Major Oilseeds</b>									
1995/96	174.08	29.12	257.63	41.95	328.69	41.53	22.00	262.86	24.30
1996/97	169.96	24.30	261.36	45.12	330.79	46.06	22.32	263.64	21.09
1997/98	177.25	21.09	286.75	47.99	355.82	49.20	22.16	275.27	31.36
1998/99	184.76	31.36	294.57	51.87	377.80	51.08	24.43	292.02	34.71
1999/00	188.48	34.71	304.26	58.98	397.95	59.20	25.45	300.28	38.47
2000/01	188.60	38.47	313.94	65.47	417.88	66.82	26.75	311.03	40.02
2001/02	188.55	40.02	324.82	63.66	428.50	62.24	27.54	324.00	42.27
2002/03	186.78	42.27	331.39	71.05	444.71	69.62	27.63	326.55	48.54
2003/04	199.79	48.54	335.85	64.13	448.52	67.02	28.10	336.78	44.72
2004/05	210.17	44.72	381.52	72.76	499.01	74.45	29.45	367.42	57.14
2005/06	211.48	57.14	391.30	75.30	523.74	75.68	29.83	383.20	64.86
2006/07	211.28	64.86	403.33	80.89	549.08	83.48	30.19	392.97	72.63
2007/08	206.87	72.63	387.80	87.71	548.14	89.42	30.56	402.06	56.66
2008/09	216.75	56.66	417.31	89.35	563.31	90.56	31.06	415.11	57.65
<b>Major Protein Meals</b>									
1995/96	nr	8.24	146.28	42.06	196.59	43.91	0.30	144.77	7.91
1996/97	nr	7.91	146.97	43.55	198.42	44.22	0.33	147.29	6.91
1997/98	nr	6.91	153.23	45.47	205.61	44.32	0.35	153.40	7.90
1998/99	nr	7.90	163.40	46.89	218.18	47.23	0.40	162.45	8.51
1999/00	nr	8.48	167.85	47.28	223.61	46.67	0.43	169.04	7.90
2000/01	nr	7.90	174.73	48.26	230.89	48.48	0.41	175.25	7.16
2001/02	nr	7.16	182.63	51.49	241.29	52.79	0.42	180.94	7.55
2002/03	nr	7.55	186.03	53.61	247.19	53.70	0.42	186.50	6.99
2003/04	nr	6.99	190.52	57.81	255.31	58.62	0.49	189.74	6.96
2004/05	nr	6.96	206.80	59.44	273.19	60.39	0.56	204.86	7.94
2005/06	nr	7.94	216.20	64.63	288.77	65.61	0.68	215.42	7.74
2006/07	nr	7.74	224.77	66.47	298.98	68.34	0.68	223.09	7.55
2007/08	nr	7.55	233.11	71.27	311.93	73.37	0.70	231.47	7.09
2008/09	nr	7.09	238.71	71.41	317.21	73.70	0.72	236.65	6.85
<b>Major Vegetable Oils</b>									
1995/96	9.97	6.57	71.23	21.96	99.76	22.80	62.07	69.27	7.69
1996/97	10.36	7.69	73.79	24.63	106.11	26.00	65.25	72.90	7.22
1997/98	7.69	7.22	75.21	24.69	107.11	26.19	66.43	73.86	7.06
1998/99	7.95	7.06	80.37	26.89	114.33	27.75	70.79	78.64	7.94
1999/00	8.33	7.79	85.93	26.63	120.34	28.72	74.67	82.72	8.91
2000/01	10.23	8.91	89.71	30.28	128.90	30.92	79.00	88.60	9.37
2001/02	10.50	9.37	92.70	31.43	133.49	33.06	81.06	91.55	8.89
2002/03	4.55	8.89	95.92	34.90	139.70	35.76	83.60	95.56	8.39
2003/04	4.42	8.39	102.42	37.02	147.84	38.86	86.57	100.29	8.70
2004/05	8.12	8.70	111.36	40.49	160.55	42.43	91.33	107.85	10.27
2005/06	8.22	10.27	118.41	43.98	172.66	47.03	94.68	115.20	10.43
2006/07	8.29	10.43	121.50	46.91	178.84	48.51	97.29	120.73	9.60
2007/08	7.33	9.60	128.21	49.56	187.37	51.74	101.66	126.52	9.12
2008/09	7.33	9.10	133.48	52.38	194.96	54.00	105.49	131.92	9.04

Based on the aggregate of different marketing years

**Table 16: World: Soybeans and Products Supply and Distribution**

Million Metric Tons

	Area Harvested	Beginning Stocks	Production	Imports	Total Supply	Exports	Crush	Domestic Consumpti	Ending Stocks
<b>Oilseed, Soybean</b>									
1995/96	61.07	25.10	124.74	32.46	182.30	31.64	112.09	131.66	19.00
1996/97	62.44	19.00	131.95	35.63	186.58	36.76	113.67	133.87	15.94
1997/98	68.53	15.94	157.95	38.16	212.06	39.28	123.21	145.15	27.63
1998/99	71.30	27.63	159.83	38.55	226.00	37.93	134.66	158.83	29.25
1999/00	71.92	29.25	160.35	45.57	235.16	45.62	135.07	159.35	30.20
2000/01	75.44	30.20	175.76	53.05	259.01	53.76	146.59	171.56	33.70
2001/02	79.47	33.70	184.82	54.39	272.90	52.90	158.02	184.48	35.53
2002/03	82.31	35.53	196.86	62.92	295.30	60.98	165.64	191.46	42.86
2003/04	88.40	42.86	186.62	54.00	283.48	56.20	163.76	189.45	37.83
2004/05	93.18	37.83	215.76	63.49	317.07	64.77	175.65	204.76	47.54
2005/06	92.92	47.54	220.53	64.05	332.12	63.58	185.21	215.18	53.35
2006/07	94.11	53.35	236.56	69.08	358.99	71.27	196.13	225.26	62.46
2007/08	90.53	62.46	218.80	75.97	357.23	76.20	205.10	232.19	48.84
2008/09	97.00	48.84	237.80	76.38	363.02	76.28	207.34	237.87	48.87
<b>Meal, Soybean</b>									
1995/96	nr	6.21	88.83	29.35	124.39	30.57	112.14	88.41	5.41
1996/97	nr	5.41	90.12	30.64	126.16	30.25	113.71	91.07	4.84
1997/98	nr	4.84	98.00	34.02	136.86	32.63	123.35	98.43	5.80
1998/99	nr	5.80	106.40	35.67	147.86	35.39	134.70	105.92	6.55
1999/00	nr	6.55	107.15	34.92	148.62	34.12	135.11	108.60	5.90
2000/01	nr	5.90	116.15	36.08	158.13	36.25	146.63	116.19	5.70
2001/02	nr	5.70	125.07	40.51	171.27	41.69	158.12	123.73	5.85
2002/03	nr	5.85	130.65	42.54	179.05	42.71	165.65	130.47	5.86
2003/04	nr	5.86	128.67	45.01	179.55	45.57	163.77	128.53	5.45
2004/05	nr	5.45	138.84	46.03	190.33	46.61	175.65	137.22	6.50
2005/06	nr	6.50	145.77	50.92	203.19	51.55	185.22	145.78	5.85
2006/07	nr	5.85	154.28	52.32	212.45	54.23	196.13	152.13	6.10
2007/08	nr	6.10	161.37	56.44	223.90	58.20	205.10	159.85	5.85
2008/09	nr	5.85	163.05	56.23	225.14	57.76	207.38	161.88	5.50
<b>Oil, Soybean</b>									
1995/96	nr	2.82	20.28	4.74	27.84	4.90	112.09	19.62	3.32
1996/97	nr	3.32	20.43	5.21	28.95	5.71	113.68	20.61	2.64
1997/98	nr	2.64	22.41	6.23	31.28	6.41	123.22	22.16	2.71
1998/99	nr	2.71	24.43	7.24	34.38	7.50	134.69	24.41	2.47
1999/00	nr	2.47	24.49	6.08	33.04	6.22	135.11	23.96	2.87
2000/01	nr	2.87	26.73	6.95	36.55	7.05	146.62	26.37	3.13
2001/02	nr	3.13	28.90	7.74	39.77	8.34	158.12	28.31	3.12
2002/03	nr	3.12	30.58	8.27	41.97	9.03	165.64	30.17	2.77
2003/04	nr	2.77	30.18	8.33	41.29	8.83	163.76	30.06	2.40
2004/05	nr	2.40	32.59	8.91	43.90	9.13	175.65	31.69	3.08
2005/06	nr	3.08	34.60	9.02	46.69	9.83	185.21	33.57	3.30
2006/07	nr	3.30	36.43	9.70	49.43	10.70	196.13	35.59	3.13
2007/08	nr	3.13	38.34	10.52	51.98	11.25	205.10	38.00	2.73
2008/09	nr	2.73	38.63	10.72	52.08	10.87	207.39	38.59	2.62

Based on the aggregate of different marketing years, primarily October through September.

**Table 17: World: Rapeseed and Products Supply and Distribution**

Million Metric Tons

	Area Harvested	Beginning Stocks	Production	Imports	Total Supply	Exports	Food Use Dom. Cons.	Domestic Consumpti	Ending Stocks
<b>Oilseed, Rapeseed</b>									
1995/96	24.17	1.00	34.31	3.87	39.18	4.17	0.40	33.34	1.67
1996/97	21.91	1.67	31.46	3.84	36.97	3.60	0.35	31.34	2.04
1997/98	23.50	2.04	33.12	4.30	39.46	4.26	0.36	34.13	1.07
1998/99	25.41	1.07	35.76	7.04	43.87	6.84	0.28	34.80	2.23
1999/00	26.75	2.23	42.48	8.20	52.92	8.21	0.39	40.46	4.25
2000/01	24.69	4.25	37.33	6.99	48.57	7.18	0.38	38.70	2.69
2001/02	23.29	2.69	36.01	4.95	43.65	4.90	0.44	35.98	2.78
2002/03	21.73	2.78	32.91	4.03	39.73	4.13	0.38	33.77	1.83
2003/04	25.47	1.83	39.43	5.15	46.40	5.48	0.62	39.06	1.86
2004/05	26.75	1.86	46.14	5.02	53.01	4.87	0.63	43.64	4.50
2005/06	27.37	4.50	48.68	6.71	59.89	6.99	0.30	47.19	5.70
2006/07	26.53	5.70	45.16	6.97	57.83	6.61	0.53	46.51	4.71
2007/08	27.86	4.71	47.30	7.76	59.76	8.24	0.46	48.70	2.82
2008/09	29.50	2.81	51.97	8.50	63.28	8.84	0.46	50.87	3.58
<b>Meal, Rapeseed</b>									
1995/96	nr	0.47	18.40	2.69	21.56	2.96	0.00	18.02	0.58
1996/97	nr	0.58	17.53	2.66	20.77	2.91	0.00	17.35	0.51
1997/98	nr	0.51	18.82	2.82	22.15	2.86	0.00	18.85	0.44
1998/99	nr	0.44	19.21	2.12	21.77	2.04	0.00	19.36	0.37
1999/00	nr	0.34	22.07	2.26	24.66	2.32	0.00	21.96	0.38
2000/01	nr	0.38	21.13	1.92	23.43	1.83	0.00	21.31	0.29
2001/02	nr	0.29	19.94	1.54	21.77	1.51	0.00	19.95	0.30
2002/03	nr	0.30	18.80	1.73	20.83	1.62	0.00	18.94	0.28
2003/04	nr	0.28	21.85	2.49	24.62	2.46	0.00	21.52	0.65
2004/05	nr	0.65	24.24	2.30	27.19	2.51	0.00	24.19	0.49
2005/06	nr	0.49	26.47	2.55	29.50	2.78	0.00	26.07	0.65
2006/07	nr	0.65	26.03	3.02	29.69	2.90	0.00	26.39	0.39
2007/08	nr	0.39	27.19	3.32	30.91	3.51	0.00	27.05	0.35
2008/09	nr	0.35	28.48	3.38	32.20	3.57	0.00	28.27	0.35
<b>Oil, Rapeseed</b>									
1995/96	nr	0.33	11.08	1.76	13.16	1.69	10.01	11.02	0.45
1996/97	nr	0.45	10.52	1.61	12.58	1.71	9.46	10.48	0.39
1997/98	nr	0.39	11.41	2.02	13.81	2.00	10.37	11.36	0.46
1998/99	nr	0.46	11.81	1.64	13.90	1.81	10.72	11.60	0.49
1999/00	nr	0.45	13.96	1.73	16.15	1.73	13.02	13.73	0.69
2000/01	nr	0.69	13.31	1.34	15.34	1.20	12.23	13.36	0.77
2001/02	nr	0.77	13.06	1.12	14.95	1.03	12.07	13.25	0.67
2002/03	nr	0.67	12.25	0.89	13.81	0.91	11.00	12.34	0.56
2003/04	nr	0.56	14.08	1.36	16.00	1.33	12.40	14.28	0.40
2004/05	nr	0.40	15.69	1.20	17.29	1.30	12.83	15.52	0.46
2005/06	nr	0.46	17.25	1.46	19.17	1.74	13.01	16.87	0.56
2006/07	nr	0.56	17.14	2.20	19.90	1.94	12.61	17.52	0.44
2007/08	nr	0.44	18.07	2.06	20.57	1.90	13.34	18.29	0.38
2008/09	nr	0.36	18.95	2.22	21.53	2.04	13.44	19.09	0.40

Based on the aggregate of different marketing years.

**Table 18: World: Sunflower and Products Supply and Distribution**

Million Metric Tons

	Area Harvested	Beginning Stocks	Production	Imports	Exports	Domestic Consumpti	Ending Stocks
<b>Oilseed, Sunflowerseed</b>							
1995/96	20.45	1.32	25.75	3.40	3.10	25.36	2.01
1996/97	19.03	2.01	23.86	3.21	3.24	24.41	1.43
1997/98	19.15	1.43	23.30	3.16	3.00	24.09	0.81
1998/99	21.46	0.81	26.65	3.75	3.69	26.12	1.40
1999/00	23.06	1.40	27.18	2.07	2.04	26.37	2.23
2000/01	19.92	2.23	23.08	2.23	2.52	23.28	1.74
2001/02	18.83	1.74	21.41	1.11	1.19	21.36	1.71
2002/03	20.17	1.71	24.04	1.39	1.52	23.39	2.23
2003/04	23.27	2.23	26.93	2.17	2.27	26.09	2.97
2004/05	21.40	2.97	25.45	1.14	1.22	25.81	2.52
2005/06	23.12	2.52	30.04	1.29	1.50	29.52	2.83
2006/07	23.70	2.83	29.81	1.65	1.88	29.37	3.04
2007/08	21.92	3.04	27.18	0.92	1.28	27.11	2.76
2008/09	24.10	2.76	31.79	1.58	1.81	31.29	3.02
<b>Meal, Sunflowerseed</b>							
1995/96	nr	0.30	10.32	2.16	2.26	10.02	0.49
1996/97	nr	0.49	10.12	2.25	2.39	10.20	0.28
1997/98	nr	0.28	9.84	2.26	2.39	9.62	0.36
1998/99	nr	0.36	10.57	2.55	2.85	10.25	0.39
1999/00	nr	0.39	10.61	2.54	2.34	10.81	0.39
2000/01	nr	0.39	9.35	2.23	2.00	9.66	0.31
2001/02	nr	0.31	8.33	1.91	2.11	8.21	0.23
2002/03	nr	0.23	9.04	2.20	2.31	9.00	0.17
2003/04	nr	0.17	10.22	2.62	2.86	9.96	0.19
2004/05	nr	0.19	10.02	2.55	2.77	9.81	0.17
2005/06	nr	0.17	11.48	3.17	3.50	11.06	0.26
2006/07	nr	0.26	11.51	3.32	3.44	11.41	0.24
2007/08	nr	0.24	10.54	2.95	3.35	10.23	0.15
2008/09	nr	0.15	12.35	3.21	3.96	11.60	0.15
<b>Oil, Sunflowerseed</b>							
1995/96	nr	0.65	9.07	2.53	2.57	8.53	1.15
1996/97	nr	1.15	8.65	3.08	3.27	8.86	0.75
1997/98	nr	0.75	8.49	2.69	2.98	8.33	0.63
1998/99	nr	0.63	9.30	2.92	3.11	8.86	0.87
1999/00	nr	0.83	9.30	2.49	2.90	8.82	0.90
2000/01	nr	0.90	8.17	2.01	2.22	8.19	0.68
2001/02	nr	0.68	7.42	1.76	1.92	7.47	0.46
2002/03	nr	0.46	8.14	2.00	2.25	7.86	0.49
2003/04	nr	0.49	9.19	1.92	2.67	8.37	0.57
2004/05	nr	0.57	9.17	2.17	2.63	8.53	0.75
2005/06	nr	0.75	10.53	3.24	3.88	9.83	0.81
2006/07	nr	0.81	10.58	3.29	3.86	10.31	0.52
2007/08	nr	0.52	9.85	2.85	3.55	9.31	0.36
2008/09	nr	0.36	11.40	3.31	4.15	10.44	0.47

Based on the aggregate of different marketing years, primarily September through August.

**Table 19: World: Palm Oil, Coconut Oil, and Fish Meal Supply and Distribution**

Million Metric Tons

	Beginning Stocks	Production	Imports	Total Supply	Exports	Industrial Dom.	Food Use Dom.	Domestic Cons. Consumpti	Ending Stocks
<b>Oil, Palm</b>									
1995/96	1.36	16.21	10.03	27.59	10.52	2.68	12.46	15.35	1.72
1996/97	1.72	17.67	11.56	30.95	11.85	2.78	14.14	17.18	1.91
1997/98	1.91	16.94	10.36	29.22	10.79	2.69	13.88	16.78	1.65
1998/99	1.65	19.21	12.02	32.87	12.34	2.81	14.94	17.98	2.56
1999/00	2.52	21.78	13.13	37.42	14.02	2.80	17.43	20.51	2.89
2000/01	2.89	24.30	16.25	43.43	16.47	3.29	20.37	24.11	2.86
2001/02	2.86	25.32	16.93	45.11	17.63	3.74	20.57	24.89	2.60
2002/03	2.60	27.64	19.61	49.85	19.61	4.79	22.23	27.62	2.62
2003/04	2.62	30.00	21.32	53.94	21.61	5.80	22.82	29.21	3.11
2004/05	3.11	33.52	23.92	60.55	24.49	7.05	24.75	32.49	3.57
2005/06	3.57	35.98	25.71	65.25	26.71	7.89	26.52	35.12	3.42
2006/07	3.42	37.34	26.84	67.60	26.85	8.24	28.34	37.30	3.45
2007/08	3.45	41.12	29.28	73.85	29.71	8.74	30.98	40.48	3.66
2008/09	3.66	42.90	31.10	77.66	31.38	9.10	32.86	42.72	3.56
<b>Oil, Coconut</b>									
1995/96	0.31	3.09	1.32	4.73	1.49	0.91	2.00	3.06	0.18
1996/97	0.18	3.74	1.48	5.41	1.66	0.99	2.20	3.36	0.39
1997/98	0.39	3.37	1.73	5.49	2.06	1.07	1.88	3.12	0.31
1998/99	0.31	2.72	1.23	4.26	1.11	1.00	1.75	2.93	0.22
1999/00	0.19	3.37	1.48	5.04	1.96	1.09	1.69	2.91	0.17
2000/01	0.17	3.61	1.77	5.54	1.83	1.19	2.06	3.39	0.33
2001/02	0.33	3.17	1.83	5.32	1.79	1.24	1.81	3.19	0.34
2002/03	0.34	3.14	1.89	5.37	1.74	1.23	1.83	3.17	0.46
2003/04	0.46	3.27	1.68	5.40	1.79	1.24	1.84	3.21	0.41
2004/05	0.41	3.45	1.87	5.73	2.04	1.38	1.84	3.33	0.36
2005/06	0.36	3.48	1.99	5.83	1.99	1.49	1.88	3.48	0.36
2006/07	0.36	3.32	1.85	5.53	1.73	1.48	1.90	3.51	0.29
2007/08	0.29	3.50	1.92	5.71	1.93	1.49	1.92	3.50	0.28
2008/09	0.28	3.62	1.96	5.85	2.01	1.52	1.95	3.57	0.28
<b>Meal, Fish</b>									
1995/96	0.74	6.37	3.55	10.66	3.55	0.09	0.00	6.27	0.84
1996/97	0.84	6.64	3.49	10.97	4.06	0.09	0.00	6.26	0.65
1997/98	0.65	4.97	2.28	7.90	2.26	0.09	0.00	4.98	0.66
1998/99	0.66	5.81	2.78	9.24	3.09	0.08	0.00	5.49	0.67
1999/00	0.67	6.33	3.70	10.69	3.67	0.08	0.00	6.38	0.65
2000/01	0.65	5.93	3.48	10.05	3.47	0.08	0.00	6.18	0.40
2001/02	0.40	5.84	3.25	9.49	3.06	0.08	0.00	5.74	0.69
2002/03	0.69	4.84	2.84	8.37	2.87	0.08	0.00	5.19	0.31
2003/04	0.31	5.33	3.11	8.74	3.21	0.07	0.00	5.36	0.18
2004/05	0.18	5.70	3.62	9.50	3.65	0.05	0.00	5.70	0.15
2005/06	0.15	4.94	2.92	8.01	2.73	0.05	0.00	5.13	0.15
2006/07	0.15	5.06	2.68	7.90	2.59	0.05	0.00	5.07	0.24
2007/08	0.24	5.10	3.04	8.38	2.71	0.05	0.00	5.41	0.25
2008/09	0.25	5.15	3.14	8.55	2.72	0.05	0.00	5.55	0.28

Based on the aggregate of different marketing years.

**Table 20: United States Oilseeds and Products Supply and Distribution Local Marketing Year****Thousand Metric Tons**

	<b>Area Harvested</b>	<b>Beginning Stocks</b>	<b>Production</b>	<b>Imports</b>	<b>Total Supply</b>	<b>Exports</b>	<b>Crush</b>	<b>Domestic Consumpti</b>	<b>Ending Stocks</b>
<b>Major Oilseeds</b>									
1995/96	33,536	10,273	69,026	466	79,765	23,872	42,572	49,842	6,051
1996/97	32,555	6,051	74,755	594	81,400	24,746	44,135	52,000	4,654
1997/98	35,351	4,654	83,095	670	88,419	24,519	48,889	57,455	6,445
1998/99	35,275	6,445	84,365	684	91,494	22,721	47,814	57,993	10,780
1999/00	37,149	10,780	82,315	759	93,854	27,395	47,891	57,474	8,985
2000/01	36,805	8,985	84,891	817	94,693	27,976	49,066	58,897	7,820
2001/02	37,323	7,820	89,832	653	98,305	29,966	50,622	61,466	6,873
2002/03	36,284	6,873	83,935	550	91,358	29,433	47,495	56,090	5,835
2003/04	36,041	5,835	76,599	504	82,938	25,159	45,529	53,627	4,152
2004/05	36,808	4,152	95,938	681	100,771	30,708	50,167	61,774	8,289
2005/06	36,587	8,289	95,532	664	104,485	26,611	51,897	63,673	14,201
2006/07	36,961	14,201	96,611	1,031	111,843	31,683	53,487	63,138	17,022
2007/08	31,435	17,022	80,001	1,249	98,272	32,684	54,574	61,119	4,469
2008/09	34,272	4,469	90,130	1,116	95,715	28,399	54,147	62,454	4,862
<b>Major Protein Meals</b>									
1995/96	nr	262	32,294	1,048	33,604	5,765	42,572	27,587	252
1996/97	nr	252	33,772	1,025	35,049	6,705	44,135	28,115	229
1997/98	nr	229	37,422	1,355	39,006	8,958	48,889	29,749	299
1998/99	nr	299	36,799	1,206	38,304	7,234	47,814	30,737	333
1999/00	nr	333	36,700	1,224	38,257	7,138	47,891	30,822	297
2000/01	nr	297	38,219	1,166	39,682	7,605	49,066	31,681	396
2001/02	nr	396	38,892	1,059	40,347	7,521	50,622	32,540	286
2002/03	nr	286	36,608	1,194	38,088	5,924	47,495	31,918	246
2003/04	nr	246	35,214	1,835	37,295	4,944	45,529	32,077	274
2004/05	nr	274	39,265	1,529	41,068	6,954	50,167	33,899	215
2005/06	nr	215	39,950	1,653	41,818	7,608	51,897	33,849	361
2006/07	nr	361	41,580	1,699	43,640	8,248	53,487	35,004	388
2007/08	nr	388	42,160	2,045	44,593	8,928	54,574	35,332	333
2008/09	nr	333	41,849	2,070	44,252	8,376	54,147	35,543	333
<b>Major Vegetable Oils</b>									
1995/96	0	739	8,169	1,279	10,187	977	42,572	8,059	1,151
1996/97	0	1,151	8,333	1,553	11,037	1,515	44,135	8,579	943
1997/98	0	943	9,505	1,644	12,092	2,044	48,889	9,064	984
1998/99	0	984	9,430	1,436	11,850	1,634	47,814	9,217	999
1999/00	0	999	9,371	1,527	11,897	1,126	47,891	9,554	1,217
2000/01	0	1,217	9,509	1,683	12,409	1,047	49,066	9,722	1,640
2001/02	0	1,640	9,645	1,627	12,912	1,549	50,622	10,058	1,305
2002/03	0	1,305	9,184	1,536	12,025	1,237	47,495	9,867	921
2003/04	0	921	8,768	1,914	11,603	739	45,529	10,071	793
2004/05	0	793	9,757	1,833	12,383	842	50,167	10,448	1,093
2005/06	0	1,093	10,390	2,385	13,868	896	51,897	11,154	1,818
2006/07	0	1,818	10,453	2,525	14,796	1,311	53,487	11,744	1,741
2007/08	0	1,741	10,813	2,942	15,496	1,742	54,574	12,057	1,697
2008/09	0	1,697	10,590	3,229	15,516	1,481	54,147	12,469	1,566

Based on the aggregate of different marketing years

**Table 21: United States Soybeans and Products Supply and Distribution Local Marketing Years**

Thousand Metric Tons

	Area Harvested	Beginning Stocks	Production	Imports	Total Supply	Exports	Crush	Domestic Consumpti	Ending Stocks
<b>Oilseed, Soybean</b>									
1995/96	24,906	9,112	59,174	121	68,407	23,108	37,273	40,306	4,993
1996/97	25,637	4,993	64,780	242	70,015	24,110	39,080	42,317	3,588
1997/98	27,968	3,588	73,176	135	76,899	23,760	43,464	47,701	5,438
1998/99	28,507	5,438	74,598	82	80,118	21,898	43,262	48,736	9,484
1999/00	29,318	9,484	72,224	114	81,822	26,537	42,927	47,388	7,897
2000/01	29,303	7,897	75,055	97	83,049	27,103	44,625	49,203	6,743
2001/02	29,532	6,743	78,672	63	85,478	28,948	46,259	50,867	5,663
2002/03	29,339	5,663	75,010	127	80,800	28,423	43,948	47,524	4,853
2003/04	29,330	4,853	66,778	151	71,782	24,128	41,632	44,595	3,059
2004/05	29,930	3,059	85,013	152	88,224	29,860	46,160	51,404	6,960
2005/06	28,834	6,960	83,368	92	90,420	25,579	47,324	52,612	12,229
2006/07	30,190	12,229	86,770	246	99,245	30,428	49,198	53,200	15,617
2007/08	25,422	15,617	70,358	272	86,247	31,162	50,077	51,674	3,411
2008/09	29,186	3,411	81,647	272	85,330	27,216	49,805	54,310	3,804
<b>Meal, Soybean</b>									
1995/96	nr	203	29,508	68	29,779	5,524	37,273	24,062	193
1996/97	nr	193	31,035	92	31,320	6,451	39,080	24,678	191
1997/98	nr	191	34,633	51	34,875	8,722	43,464	25,955	198
1998/99	nr	198	34,285	90	34,573	6,979	43,262	27,294	300
1999/00	nr	300	34,102	45	34,447	6,912	42,927	27,269	266
2000/01	nr	266	35,730	46	36,042	7,335	44,625	28,359	348
2001/02	nr	348	36,552	130	37,030	7,271	46,259	29,541	218
2002/03	nr	218	34,649	157	35,024	5,728	43,948	29,096	200
2003/04	nr	200	32,953	258	33,411	4,690	41,632	28,530	191
2004/05	nr	191	36,936	134	37,261	6,659	46,160	30,446	156
2005/06	nr	156	37,416	128	37,700	7,301	47,324	30,114	285
2006/07	nr	285	39,058	142	39,485	7,971	49,198	31,200	314
2007/08	nr	314	39,679	150	40,143	8,618	50,077	31,253	272
2008/09	nr	272	39,404	150	39,826	8,074	49,805	31,480	272
<b>Oil, Soybean</b>									
1995/96	nr	516	6,913	43	7,472	450	37,273	6,108	914
1996/97	nr	914	7,145	24	8,083	922	39,080	6,471	690
1997/98	nr	690	8,229	27	8,946	1,397	43,464	6,922	627
1998/99	nr	627	8,202	37	8,866	1,076	43,262	7,101	689
1999/00	nr	689	8,085	37	8,811	624	42,927	7,283	904
2000/01	nr	904	8,355	33	9,292	636	44,625	7,401	1,255
2001/02	nr	1,255	8,572	21	9,848	1,143	46,259	7,635	1,070
2002/03	nr	1,070	8,360	21	9,451	1,027	43,948	7,748	676
2003/04	nr	676	7,748	139	8,563	425	41,632	7,650	488
2004/05	nr	488	8,782	12	9,282	600	46,160	7,911	771
2005/06	nr	771	9,248	16	10,035	523	47,324	8,147	1,365
2006/07	nr	1,365	9,294	17	10,676	857	49,198	8,420	1,399
2007/08	nr	1,399	9,682	23	11,104	1,429	50,077	8,346	1,329
2008/09	nr	1,329	9,462	23	10,814	1,202	49,805	8,392	1,220

Data based on Local Marketing Year (MY). Soybeans are on a September/August MY, and Soybean Meal and Oil are on an October/September MY.



**Table 22: Brazil Soybeans and Products Supply and Distribution Local Marketing Years**

Thousand Metric Tons

	Area Harvested	Beginning Stocks	Production	Imports	Total Supply	Exports	Crush	Domestic Consumpti	Ending Stocks
<b>Oilseed, Soybean (Local)</b>									
1995/96	10,950	648	24,150	1,300	26,098	3,633	20,083	21,631	834
1996/97	11,800	834	27,300	1,450	29,584	8,327	18,944	20,658	599
1997/98	13,000	599	32,500	634	33,733	9,325	21,832	23,586	822
1998/99	12,900	822	31,300	616	32,738	8,912	21,645	23,423	403
1999/00	13,600	403	34,700	794	35,897	11,779	21,578	23,502	616
2000/01	13,934	616	39,500	854	40,970	15,521	22,773	24,992	457
2001/02	16,350	457	43,500	1,100	45,057	16,074	25,843	28,302	681
2002/03	18,448	681	52,000	1,124	53,805	19,987	27,796	30,520	3,298
2003/04	21,476	3,298	51,000	364	54,662	19,257	28,914	31,807	3,598
2004/05	22,800	3,598	53,000	352	56,950	22,799	29,728	32,513	1,638
2005/06	22,229	1,638	57,000	40	58,678	24,770	28,756	31,656	2,252
2006/07	20,700	2,252	59,000	108	61,360	23,805	31,300	34,234	3,321
2007/08	21,300	3,321	61,000	150	64,471	25,860	32,500	35,475	3,136
2008/09	22,500	3,136	64,000	160	67,296	28,650	32,500	35,525	3,121
<b>Meal, Soybean (Local)</b>									
1995/96	nr	646	15,835	109	16,590	10,900	20,083	5,242	448
1996/97	nr	448	14,863	305	15,616	9,841	18,944	5,350	425
1997/98	nr	425	17,235	157	17,817	10,861	21,832	6,435	521
1998/99	nr	521	17,000	75	17,596	10,132	21,645	6,870	594
1999/00	nr	594	16,831	119	17,544	9,876	21,578	7,068	600
2000/01	nr	600	17,753	230	18,583	11,110	22,773	7,171	302
2001/02	nr	302	20,392	388	21,082	12,783	25,843	7,596	703
2002/03	nr	703	21,773	337	22,813	13,542	27,796	8,292	979
2003/04	nr	979	22,330	227	23,536	14,596	28,914	8,099	841
2004/05	nr	841	22,928	244	24,013	14,256	29,728	9,121	636
2005/06	nr	636	22,300	214	23,150	12,287	28,756	10,000	863
2006/07	nr	863	24,250	146	25,259	12,346	31,300	11,350	1,563
2007/08	nr	1,563	25,175	125	26,863	13,460	32,500	11,895	1,508
2008/09	nr	1,508	25,175	130	26,813	13,100	32,500	12,450	1,263
<b>Oil, Soybean (Local)</b>									
1995/96	nr	224	3,776	175	4,175	1,323	20,083	2,664	188
1996/97	nr	188	3,527	178	3,893	1,077	18,944	2,662	154
1997/98	nr	154	4,083	197	4,434	1,413	21,832	2,795	226
1998/99	nr	226	4,048	243	4,517	1,519	21,645	2,762	236
1999/00	nr	236	4,036	111	4,383	1,134	21,578	2,971	278
2000/01	nr	278	4,370	87	4,735	1,616	22,773	2,937	182
2001/02	nr	182	4,905	140	5,227	2,100	25,843	2,936	191
2002/03	nr	191	5,349	47	5,587	2,405	27,796	2,897	285
2003/04	nr	285	5,579	14	5,878	2,531	28,914	3,054	293
2004/05	nr	293	5,708	3	6,004	2,697	29,728	3,059	248
2005/06	nr	248	5,521	18	5,787	2,315	28,756	3,172	300
2006/07	nr	300	6,000	62	6,362	2,521	31,300	3,500	341
2007/08	nr	341	6,225	70	6,636	2,355	32,500	3,925	356
2008/09	nr	356	6,225	70	6,651	2,250	32,500	4,075	326

Data based on Brazil's local February/January Marketing Year (MY).  
Where February 2006 - January 2007 is the 2005/06 MY.

**Table 23: Argentina Soybeans and Products Supply and Distribution Local Marketing Years**

Thousand Metric Tons

	Area Harvested	Beginning Stocks	Production	Imports	Total Supply	Exports	Crush	Domestic Consumpti	Ending Stocks
<b>Oilseed, Soybean (Local)</b>									
1995/96	5,980	931	12,480	101	13,512	2,013	9,945	10,535	964
1996/97	6,200	964	11,200	997	13,161	489	10,423	11,055	1,617
1997/98	6,954	1,617	19,500	289	21,406	2,855	16,742	17,499	1,052
1998/99	8,165	1,052	20,000	251	21,303	3,097	17,108	17,933	273
1999/00	8,583	273	21,200	301	21,774	4,109	16,514	17,449	216
2000/01	10,401	216	27,800	291	28,307	7,377	19,507	20,587	343
2001/02	11,400	343	30,000	297	30,640	6,221	22,397	23,597	822
2002/03	12,600	822	35,500	377	36,699	8,809	24,815	26,140	1,750
2003/04	14,000	1,750	33,000	719	35,469	6,799	25,072	26,509	2,161
2004/05	14,400	2,161	39,000	709	41,870	10,686	29,560	31,010	174
2005/06	15,200	174	40,500	1,013	41,687	7,130	32,748	34,223	334
2006/07	16,300	334	48,800	2,336	51,470	12,132	35,962	37,462	1,876
2007/08	16,800	1,876	47,000	2,600	51,476	12,000	37,186	38,721	755
2008/09	17,100	755	48,000	2,725	51,480	12,300	37,200	38,750	430
<b>Meal, Soybean (Local)</b>									
1995/96	nr	2,015	7,955	0	9,970	7,772	9,945	328	1,870
1996/97	nr	1,870	8,390	0	10,260	8,033	10,423	337	1,890
1997/98	nr	1,890	13,440	0	15,330	12,689	16,742	343	2,298
1998/99	nr	2,298	13,438	0	15,736	12,761	17,108	342	2,633
1999/00	nr	2,633	13,113	0	15,746	12,854	16,514	350	2,542
2000/01	nr	2,542	15,492	0	18,034	15,979	19,507	374	1,681
2001/02	nr	1,681	17,762	0	19,443	17,572	22,397	423	1,448
2002/03	nr	1,448	19,667	0	21,115	19,162	24,815	500	1,453
2003/04	nr	1,453	19,741	2	21,196	19,078	25,072	530	1,588
2004/05	nr	1,588	23,350	1	24,939	22,703	29,560	550	1,686
2005/06	nr	1,686	25,582	0	27,268	24,691	32,748	574	2,003
2006/07	nr	2,003	27,864	0	29,867	28,098	35,962	617	1,152
2007/08	nr	1,152	28,990	0	30,142	28,031	37,186	645	1,466
2008/09	nr	1,466	29,000	0	30,466	28,330	37,200	675	1,461
<b>Oil, Soybean (Local)</b>									
1995/96	nr	689	1,758	0	2,447	1,694	9,945	189	564
1996/97	nr	564	1,859	0	2,423	1,770	10,423	208	445
1997/98	nr	445	2,953	0	3,398	2,544	16,742	217	637
1998/99	nr	637	3,118	0	3,755	3,085	17,108	230	440
1999/00	nr	440	3,017	0	3,457	2,837	16,514	242	378
2000/01	nr	378	3,630	0	4,008	3,510	19,507	287	211
2001/02	nr	211	4,165	0	4,376	3,639	22,397	357	380
2002/03	nr	380	4,672	0	5,052	4,245	24,815	389	418
2003/04	nr	418	4,724	0	5,142	4,446	25,072	392	304
2004/05	nr	304	5,558	0	5,862	5,082	29,560	395	385
2005/06	nr	385	6,169	0	6,554	5,665	32,748	402	487
2006/07	nr	487	6,917	0	7,404	6,514	35,962	580	310
2007/08	nr	310	7,136	0	7,446	6,000	37,186	1,085	361
2008/09	nr	361	7,140	0	7,501	6,000	37,200	1,160	341

Data based on Argentina's Local April/March Marketing Year (MY).  
Where April 2006 - March 2007 is the 2005/06 MY.

**Table 24: South East Asia: Oilseeds and Products Supply and Distribution**  
**Thousand Metric Tons**

	2003/04	2004/05	2005/06	2006/07	2007/08	Jul 2008/09
<b>Production</b>						
Oilseed, Copra	4,011	4,200	4,189	3,988	4,347	4,546
Oilseed, Palm Kernel	7,042	8,067	8,456	8,639	9,487	10,121
Oilseed, Soybean	1,410	1,453	1,540	1,510	1,576	1,566
Other	3,060	3,220	3,096	3,210	3,159	3,258
<b>Total</b>	<b>15,523</b>	<b>16,940</b>	<b>17,281</b>	<b>17,347</b>	<b>18,569</b>	<b>19,491</b>
<b>Imports</b>						
Meal, Fish	143	157	158	112	123	128
Meal, Rapeseed	221	214	272	380	414	425
Meal, Soybean	6,051	6,850	7,915	9,068	9,580	9,706
Other	365	357	395	590	647	680
<b>Total</b>	<b>6,780</b>	<b>7,578</b>	<b>8,740</b>	<b>10,150</b>	<b>10,764</b>	<b>10,939</b>
<b>Imports</b>						
Oil, Palm	1,648	1,383	1,795	1,368	1,600	1,690
Oil, Rapeseed	0	0	0	0	0	0
Oil, Soybean	150	151	221	237	238	274
Oil, Sunflowerseed	0	0	0	0	0	0
Other	420	408	485	518	503	513
<b>Total</b>	<b>2,218</b>	<b>1,942</b>	<b>2,501</b>	<b>2,123</b>	<b>2,341</b>	<b>2,477</b>
<b>Domestic Consumption</b>						
Meal, Fish	554	572	554	524	541	551
Meal, Rapeseed	221	214	272	380	414	425
Meal, Soybean	7,651	8,435	9,579	10,498	11,052	11,259
Other	2,035	2,214	2,266	2,534	2,612	2,791
<b>Total</b>	<b>10,461</b>	<b>11,435</b>	<b>12,671</b>	<b>13,936</b>	<b>14,619</b>	<b>15,026</b>
<b>Domestic Consumption</b>						
Oil, Palm	7,304	8,300	8,861	9,636	10,443	10,995
Oil, Rapeseed	0	0	0	0	0	0
Oil, Soybean	393	409	459	461	468	501
Oil, Sunflowerseed	74	80	78	78	78	78
Other	3,005	3,148	3,287	3,336	3,445	3,693
<b>Total</b>	<b>10,776</b>	<b>11,937</b>	<b>12,685</b>	<b>13,511</b>	<b>14,434</b>	<b>15,267</b>
<b>Industrial Dom. Cons.</b>						
Oil, Palm	2,184	2,583	2,883	3,270	3,660	3,845
Oil, Rapeseed	0	0	0	0	0	0
Oil, Soybean	73	68	71	69	70	71
Oil, Sunflowerseed	0	0	0	0	0	0
Other	1,924	2,082	2,255	2,232	2,342	2,538
<b>Total</b>	<b>4,181</b>	<b>4,733</b>	<b>5,209</b>	<b>5,571</b>	<b>6,072</b>	<b>6,454</b>
<b>Food Use Dom. Cons.</b>						
Oil, Palm	4,855	5,365	5,593	5,966	6,363	6,725
Oil, Rapeseed	0	0	0	0	0	0
Oil, Soybean	320	341	388	392	398	430
Oil, Sunflowerseed	74	80	78	78	78	78
Other	1,069	1,048	1,018	1,089	1,088	1,140
<b>Total</b>	<b>6,318</b>	<b>6,834</b>	<b>7,077</b>	<b>7,525</b>	<b>7,927</b>	<b>8,373</b>
<b>SME</b>						
Meal, Fish	801	827	801	757	782	796
Meal, Rapeseed	157	152	194	270	295	302
Meal, Soybean	7,651	8,435	9,579	10,498	11,052	11,259
Other	1,130	1,175	1,174	1,288	1,329	1,394
<b>Total</b>	<b>9,738</b>	<b>10,589</b>	<b>11,747</b>	<b>12,813</b>	<b>13,457</b>	<b>13,752</b>

Southeast Asia includes Brunei, Burma, Cambodia, Indonesia, Laos, Malaysia, Philippines, Singapore, Thailand, and Vietnam.  
SME - 44 Percent Protein Soybean Meal Equivalent

**Table 25: Middle East Oilseeds and Products Supply and Distribution**  
**Thousand Metric Tons**

	2003/04	2004/05	2005/06	2006/07	2007/08	Jul 2008/09
<b>Production</b>						
Oilseed, Cottonseed	2,054	2,147	2,012	1,877	1,818	1,517
Oilseed, Rapeseed	0	0	0	0	0	0
Oilseed, Soybean	239	227	239	269	265	284
Oilseed, Sunflowerseed	697	750	853	954	804	955
Other	85	80	85	77	80	90
<b>Total</b>	<b>3,075</b>	<b>3,204</b>	<b>3,189</b>	<b>3,177</b>	<b>2,967</b>	<b>2,846</b>
<b>Imports</b>						
Meal, Fish	66	47	43	47	50	52
Meal, Rapeseed	0	18	9	19	22	20
Meal, Soybean	3,130	2,415	2,148	2,552	2,755	2,961
Other	476	474	563	624	636	701
<b>Total</b>	<b>3,672</b>	<b>2,954</b>	<b>2,763</b>	<b>3,242</b>	<b>3,463</b>	<b>3,734</b>
<b>Imports</b>						
Oil, Palm	2,153	2,186	2,410	2,253	2,575	2,717
Oil, Rapeseed	5	9	9	5	3	3
Oil, Soybean	878	962	933	741	800	797
Oil, Sunflowerseed	120	241	738	450	675	695
Other	59	71	45	64	71	73
<b>Total</b>	<b>3,215</b>	<b>3,469</b>	<b>4,135</b>	<b>3,513</b>	<b>4,124</b>	<b>4,285</b>
<b>Domestic Consumption</b>						
Meal, Fish	71	52	48	52	55	57
Meal, Rapeseed	0	20	75	91	178	176
Meal, Soybean	4,756	4,292	4,371	4,852	5,187	5,463
Other	1,765	1,787	1,823	1,932	1,844	1,872
<b>Total</b>	<b>6,592</b>	<b>6,151</b>	<b>6,317</b>	<b>6,927</b>	<b>7,264</b>	<b>7,568</b>
<b>Domestic Consumption</b>						
Oil, Palm	1,552	1,659	1,926	1,781	2,039	2,181
Oil, Rapeseed	5	7	56	49	108	111
Oil, Soybean	1,144	1,195	1,326	1,146	1,214	1,222
Oil, Sunflowerseed	647	729	1,015	1,077	1,097	1,207
Other	553	590	566	581	583	556
<b>Total</b>	<b>3,901</b>	<b>4,180</b>	<b>4,889</b>	<b>4,634</b>	<b>5,041</b>	<b>5,277</b>
<b>Industrial Dom. Cons.</b>						
Oil, Palm	32	123	165	179	169	169
Oil, Rapeseed	0	0	48	31	25	25
Oil, Soybean	72	119	236	93	97	99
Oil, Sunflowerseed	11	17	21	22	22	22
Other	37	39	53	61	59	55
<b>Total</b>	<b>152</b>	<b>298</b>	<b>523</b>	<b>386</b>	<b>372</b>	<b>370</b>
<b>Food Use Dom. Cons.</b>						
Oil, Palm	1,520	1,536	1,761	1,602	1,870	2,012
Oil, Rapeseed	5	7	8	18	83	86
Oil, Soybean	1,049	1,050	1,067	1,030	1,095	1,101
Oil, Sunflowerseed	621	696	974	1,035	1,053	1,163
Other	516	551	513	520	524	501
<b>Total</b>	<b>3,711</b>	<b>3,840</b>	<b>4,323</b>	<b>4,205</b>	<b>4,625</b>	<b>4,863</b>
<b>SME</b>						
Meal, Fish	103	75	69	75	79	82
Meal, Rapeseed	0	14	53	65	127	125
Meal, Soybean	4,756	4,292	4,371	4,852	5,187	5,463
Other	1,555	1,568	1,608	1,710	1,634	1,679
<b>Total</b>	<b>6,414</b>	<b>5,949</b>	<b>6,102</b>	<b>6,702</b>	<b>7,027</b>	<b>7,349</b>

Middle East includes Bahrain, Gaza Strip, Iran, Iraq, Israel, Jordan, Kuwait, Lebanon, Oman, Qatar, Saudi Arabia, Syria, Turkey, United Arab Emirates, West Banks, and Yemen.

SME - 44 Percent Protein Soybean Meal Equivalent

**Table 26: European Union (27): Oilseeds and Products Supply and Distribution**  
**Thousand Metric Tons**

	2003/04	2004/05	2005/06	2006/07	2007/08	Jul 2008/09
<b>Production</b>						
Oilseed, Rapeseed	11,185	15,432	15,523	16,087	18,320	19,008
Oilseed, Soybean	825	1,086	1,174	1,228	723	768
Oilseed, Sunflowerseed	6,155	6,463	5,958	6,502	4,781	6,482
Other	628	739	803	519	486	405
<b>Total</b>	<b>18,793</b>	<b>23,720</b>	<b>23,458</b>	<b>24,336</b>	<b>24,310</b>	<b>26,663</b>
<b>Imports</b>						
Meal, Fish	596	648	570	527	575	550
Meal, Rapeseed	107	109	84	106	115	110
Meal, Soybean	22,012	21,910	22,823	22,075	24,400	23,500
Other	4,621	4,623	4,797	4,253	4,015	4,280
<b>Total</b>	<b>27,336</b>	<b>27,290</b>	<b>28,274</b>	<b>26,961</b>	<b>29,105</b>	<b>28,440</b>
<b>Imports</b>						
Oil, Palm	3,371	4,028	4,272	4,000	4,000	4,050
Oil, Rapeseed	33	34	316	727	260	250
Oil, Soybean	57	181	717	969	1,000	950
Oil, Sunflowerseed	517	862	1,235	1,184	1,000	1,250
Other	1,657	1,696	1,665	1,706	1,637	1,709
<b>Total</b>	<b>5,635</b>	<b>6,801</b>	<b>8,205</b>	<b>8,586</b>	<b>7,897</b>	<b>8,209</b>
<b>Domestic Consumption</b>						
Meal, Fish	926	893	867	885	932	913
Meal, Rapeseed	6,104	7,493	8,461	9,023	10,209	11,000
Meal, Soybean	32,729	32,680	32,875	33,092	35,562	33,720
Other	8,066	7,762	7,729	7,336	6,528	7,320
<b>Total</b>	<b>47,825</b>	<b>48,828</b>	<b>49,932</b>	<b>50,336</b>	<b>53,231</b>	<b>52,953</b>
<b>Domestic Consumption</b>						
Oil, Palm	3,306	3,916	4,171	3,869	3,860	3,910
Oil, Rapeseed	4,406	5,247	6,328	7,144	7,612	8,055
Oil, Soybean	2,107	2,210	2,915	3,360	3,411	3,235
Oil, Sunflowerseed	2,647	2,900	3,194	3,278	2,734	3,245
Other	3,585	3,651	3,541	3,589	3,612	3,610
<b>Total</b>	<b>16,051</b>	<b>17,924</b>	<b>20,149</b>	<b>21,240</b>	<b>21,229</b>	<b>22,055</b>
<b>Industrial Dom. Cons.</b>						
Oil, Palm	671	1,035	1,265	975	900	925
Oil, Rapeseed	1,783	2,588	3,709	4,768	4,800	5,495
Oil, Soybean	336	410	1,122	1,555	1,585	1,500
Oil, Sunflowerseed	102	114	114	115	109	118
Other	405	407	411	418	417	420
<b>Total</b>	<b>3,297</b>	<b>4,554</b>	<b>6,621</b>	<b>7,831</b>	<b>7,811</b>	<b>8,458</b>
<b>Food Use Dom. Cons.</b>						
Oil, Palm	2,375	2,620	2,646	2,634	2,690	2,715
Oil, Rapeseed	2,616	2,653	2,614	2,371	2,807	2,555
Oil, Soybean	1,651	1,670	1,663	1,675	1,696	1,605
Oil, Sunflowerseed	2,542	2,783	3,078	3,160	2,623	3,125
Other	3,144	3,208	3,093	3,135	3,169	3,164
<b>Total</b>	<b>12,328</b>	<b>12,934</b>	<b>13,094</b>	<b>12,975</b>	<b>12,985</b>	<b>13,164</b>
<b>SME</b>						
Meal, Fish	1,338	1,290	1,253	1,279	1,347	1,319
Meal, Rapeseed	4,343	5,331	6,020	6,420	7,264	7,827
Meal, Soybean	32,729	32,680	32,875	33,092	35,562	33,720
Other	5,963	5,545	5,602	5,480	4,713	5,436
<b>Total</b>	<b>44,373</b>	<b>44,846</b>	<b>45,750</b>	<b>46,271</b>	<b>48,886</b>	<b>48,302</b>

EU-25 includes Austria, Belgium, Bulgaria, Cyprus, Czech Republic, Denmark, Estonia, Finland, France, Germany, Hungary, Ireland, Italy, Latvia, Lithuania, Luxembourg, Malta, Netherlands, Poland, Portugal, Romania, Slovakia, Slovenia, Spain, Sweden, and United Kingdom  
SME - 44 Percent Protein Soybean Meal Equivalent

**Table 28: India Oilseeds and Products Supply and Distribution**  
**Thousand Metric Tons**

	2003/04	2004/05	2005/06	2006/07	2007/08	Jul 2008/09
<b>Production</b>						
Oilseed, Cottonseed	5,944	8,067	8,088	9,128	10,600	11,000
Oilseed, Peanut	7,700	7,000	6,300	5,385	6,600	6,900
Oilseed, Rapeseed	6,800	6,500	7,000	5,800	5,450	5,800
Oilseed, Soybean	6,800	5,850	7,000	7,690	9,300	8,700
Oilseed, Sunflowerseed	1,700	1,224	1,550	1,280	1,216	1,400
Other	748	763	763	633	713	749
<b>Total</b>	<b>29,692</b>	<b>29,404</b>	<b>30,701</b>	<b>29,916</b>	<b>33,879</b>	<b>34,549</b>
<b>Imports</b>						
Oil, Cottonseed	0	0	0	0	0	0
Oil, Palm	3,486	3,525	2,899	3,800	4,300	4,700
Oil, Peanut	0	0	0	0	0	0
Oil, Rapeseed	0	0	0	0	0	0
Oil, Soybean	906	2,026	1,727	1,403	900	850
Oil, Sunflowerseed	79	3	113	152	25	110
Other	89	119	166	175	130	145
<b>Total</b>	<b>4,560</b>	<b>5,673</b>	<b>4,905</b>	<b>5,530</b>	<b>5,355</b>	<b>5,805</b>
<b>Domestic Consumption</b>						
Meal, Cottonseed	2,031	2,771	2,800	3,090	3,568	3,797
Meal, Peanut	1,964	1,961	1,686	1,477	1,750	1,822
Meal, Rapeseed	2,350	2,577	2,717	2,830	2,260	2,315
Meal, Soybean	1,123	1,379	1,660	1,945	2,045	2,198
Meal, Sunflowerseed	681	494	664	558	528	618
Other	305	369	335	294	322	332
<b>Total</b>	<b>8,454</b>	<b>9,551</b>	<b>9,862</b>	<b>10,194</b>	<b>10,473</b>	<b>11,082</b>
<b>Domestic Consumption</b>						
Oil, Cottonseed	613	775	895	947	1,110	1,147
Oil, Palm	3,598	3,406	3,125	3,769	4,380	4,725
Oil, Peanut	1,769	1,726	1,592	1,370	1,565	1,650
Oil, Rapeseed	2,132	2,067	2,296	2,133	1,967	1,967
Oil, Soybean	1,885	2,627	2,918	2,598	2,434	2,180
Oil, Sunflowerseed	625	400	625	569	413	563
Other	536	573	635	626	581	601
<b>Total</b>	<b>11,158</b>	<b>11,574</b>	<b>12,086</b>	<b>12,012</b>	<b>12,450</b>	<b>12,833</b>
<b>Food Use Dom. Cons.</b>						
Oil, Cottonseed	592	750	865	915	1,077	1,109
Oil, Palm	3,428	3,196	3,015	3,599	4,200	4,525
Oil, Peanut	1,744	1,700	1,577	1,357	1,550	1,635
Oil, Rapeseed	2,132	2,067	2,296	2,133	1,967	1,967
Oil, Soybean	1,885	2,627	2,918	2,598	2,434	2,180
Oil, Sunflowerseed	625	400	625	569	413	563
Other	249	264	279	276	276	276
<b>Total</b>	<b>10,655</b>	<b>11,004</b>	<b>11,575</b>	<b>11,447</b>	<b>11,917</b>	<b>12,255</b>
<b>SME</b>						
Meal, Cottonseed	1,646	2,245	2,269	2,504	2,891	3,077
Meal, Peanut	2,208	2,204	1,895	1,660	1,967	2,048
Meal, Rapeseed	1,672	1,834	1,933	2,014	1,608	1,647
Meal, Soybean	1,123	1,379	1,660	1,945	2,045	2,198
Meal, Sunflowerseed	643	466	627	527	499	584
Other	137	166	150	132	145	149
<b>Total</b>	<b>7,428</b>	<b>8,294</b>	<b>8,534</b>	<b>8,781</b>	<b>9,154</b>	<b>9,703</b>

SME - 44 Percent Protein Soybean Meal Equivalent

**Table 29: Oilseed Prices**  
**U.S. Dollars per Metric Ton**

Year Beg Oct 1	Soybean					Peanut		Sunseed		apeseed	Copra
	U.S. 1/	U.S. 2/	Brz 3/	Arg 4/	Rott 5/	U.S. 6/	Rott 7/	U.S. 8/	Rott 9/	Hamb 10/	Rott 11/
<b>Oct - Sep Average</b>											
96/97-05/06	211	215	221	219	253	488	895	244	276	258	366
1996/97	274	278	285	288	307	603	926	258	266	284	452
1997/98	230	233	240	231	259	578	1,055	256	309	296	398
1998/99	176	177	184	179	225	563	847	223	257	227	468
1999/00	173	175	183	180	208	544	820	168	214	190	357
2000/01	167	169	180	175	200	582	888	167	219	202	208
2001/02	170	174	183	179	203	389	700	238	287	220	245
2002/03	209	232	217	221	267	415	963	265	286	285	287
2003/04	291	294	277	285	323	425	976	282	321	317	424
2004/05	217	214	232	228	277	402	915	316	313	262	431
2005/06	205	202	228	227	261	383	857	261	291	292	387
<b>2006/07</b>											
Oct	203	208	238	242	273	379	980	267	295	337	411
Nov	223	234	252	266	300	379	1,092	276	325	351	434
Dec	227	235	256	268	297	388	1,085	300	340	366	486
Jan	234	245	263	275	306	392	1,069	304	338	356	484
Feb	252	266	283	297	325	392	1,044	328	339	349	503
Mar	255	263	276	276	322	392	1,041	344	347	341	509
Apr	253	257	267	262	320	403	1,045	351	369	344	553
May	262	269	255	246	334	395	1,096	366	395	358	592
Jun	276	287	290	281	361	399	1,123	375	417	371	653
Jul	278	291	299	286	376	403	1,203	406	462	405	613
Aug	284	287	319	304	385	397	1,322	403	542	439	595
Sep	301	327	355	349	426	410	1,438	390	645	485	614
<b>Average</b>	254	264	279	279	335	394	1,128	343	401	375	537
<b>2007/08</b>											
Oct	307	340	385	372	450	472	1,415	392	693	521	658
Nov	346	374	411	403	489	478	1,628	406	712	562	748
Dec	367	407	421	437	515	470	1,700	423	711	597	765
Jan	366	440	465	471	541	481	1,700	419	772	643	848
Feb	430	488	494	512	572	463	1,563	534	826	693	921
Mar	423	473	473	514	575	456	1,795	578	922	754	972
Apr	441	465	468	459	558	441	1,795	551	928	704	963
May	445	476	473	461	575	450	1,795	606	749	719	1014
*Jun	496	550	550	528	622	443	1,823	633	767	725	1063
Jul											
Aug											
Sep											
<b>Average</b>	402	446	460	462	544	462	1,690	505	787	658	884

1/ U.S. Farm Price; USDA. 2/ U.S. NO.1 Yellow Cash Central Illinois; Wall Street Journal.  
3/ Rio Grande, Brazil FOB; Safras & Mercado or FOB Paranagua Reuters 4/ Argentina FOB B.Aires;  
Safras & Mercado. or FOB Up River; Reuters 5/ Rotterdam CIF; U.S.; Oil World.  
6/ U.S. Farm Price Inshell USDA. 7/ Rotterdam CIF; US Runners 40/50%, Shelled Basis, Oil World.  
8/ U.S. Farm Price; USDA. 9/ Rotterdam CIF; EC Lower Rhine (Beginning Sep 93) U.S./Canada Prior;  
Oil World. 10/Hamburg CIF; Europe "00" Oil; Oil World.  
11/ Rotterdam CIF; Phillipines/Indonesia; Oil World  
\* Preliminary

7/11/2008 8:57:29 AM

**Table 30: Protein Meal Prices**  
**U.S. Dollars per Metric Ton**

Year Beg Oct 1	Soybean				Cottonseed U.S. 5/	Sunseed		Peanut U.S. 8/	Fish Hamb 9/	Rapeseed Hamb 10/	Corn Gluten 11/
	U.S. 1/	Brz 2/	Arg 3/	Hamb 4/		U.S. 6/	Rott 7/				
<b>Oct - Sep Average</b>											
96/97-05/06	208	191	170	208	160	97	114	156	614	139	110
1996/97	289	289	257	278	212	122	138	256	579	175	127
1997/98	204	201	174	197	159	93	103	231	686	139	99
1998/99	153	150	130	150	121	72	76	110	442	105	96
1999/00	185	182	159	180	141	83	102	122	407	124	91
2000/01	191	187	168	188	158	100	118	134	459	141	95
2001/02	180	174	157	174	146	95	110	122	592	129	92
2002/03	200	163	152	197	161	101	106	140	598	139	108
2003/04	282	211	188	273	202	122	149	197	649	178	142
2004/05	202	172	157	231	137	94	120	127	665	131	122
2005/06	192	176	158	215	159	85	122	118	1060	129	128
<b>2006/07</b>											
Oct	196	185	176	230	146	96	153	109	1,229	147	154
Nov	210	194	174	246	145	109	150	109	1,247	152	166
Dec	199	180	175	245	168	120	145	108	1,256	161	174
Jan	210	187	176	257	177	126	145	109	1,234	172	189
Feb	230	213	178	272	193	168	161	109	1,252	198	195
Mar	226	198	179	278	204	146	163	NA	1,268	195	205
Apr	209	187	171	263	163	131	169	NA	1,289	178	201
May	219	173	153	268	151	110	179	NA	1,264	164	207
Jun	253	200	182	281	145	94	181	NA	1,227	162	201
Jul	245	207	184	294	152	92	189	NA	1,202	191	206
Aug	240	216	193	310	160	82	236	NA	1,087	223	NA
Sep	280	246	226	366	185	114	262	NA	1,079	269	NA
<b>Average</b>	226	199	181	276	166	116	178	109	1,220	184	190
<b>2007/08</b>											
Oct	287	280	250	400	202	153	289	NA	1,068	272	N/A
Nov	309	286	255	414	194	147	280	NA	1,069	260	184
Dec	347	302	277	443	217	175	283	NA	1,088	272	201
Jan	365	349	291	454	302	234	314	NA	1,103	308	212
Feb	381	354	304	469	322	249	326	NA	1,114	345	N/A
Mar	365	338	294	489	270	222	330	NA	1,161	359	N/A
Apr	364	334	302	541	254	180	317	NA	1,168	327	N/A
May	359	339	302	512	265	170	308	NA	1,187	354	N/A
*Jun	461	406	346	520	323	177	325	NA	1,201	332	N/A
Jul											
Aug											
Sep											
<b>Average</b>	360	332	291	471	261	190	308	NA	1,129	314	199

1/ Decatur, Average Wholesale 48% Protein; USDA. 2/ Rio Grande, Brazil FOB; Bulk Rate 45-46% Protein; Safra & Mercado or Reuters. 3/ Argentina Pellets, FOB B.Aires; Safra & Mercado or FOB Argentina Reuters. 4/ Hamburg FOB Ex-Mill; Oil World. 5/ Memphis FOB; 41% Protein Solvent Extraction; USDA. 6/ Minneapolis FOB; 32% Protein; USDA. 7/ Rotterdam CIF; Argentina-Uruguay Pellet 37-38%; Oil World. 8/ Southeast Mills FOB. 9/ Bremen (Hamburg prior to Mar 2006) 64-65% Protein; Oil World. 10/ Hamburg FOB; Ex-Mill 34% Protein; Oil World. 11/ Rotterdam CIF; Pellets 23-24% Protein; Oil World.  
\* Preliminary  
7/11/2008 8:57:29 AM



**Table 31: Vegetable Oil Prices**  
**U.S. Dollars per Metric Ton**

Year Begin Oct 1	Soybean				Cottonseed		Sunseed		Peanut		Palm	Canola	Coconut	Corn
	U.S. 1/	Brz 2/	Arg 3/	Rott 4/	U.S. 5/	Rott 6/	U.S. 7/	Rott 8/	U.S. 9/	Rott 10/	Malay 11/	Rott 12/	Rott 13/	U.S. 14/
<b>Oct - Sep Average</b>														
96/97-05/06	469	457	456	504	580	623	609	586	969	916	420	553	561	526
1996/97	496	514	515	536	564	588	499	545	963	959	526	539	693	530
1997/98	569	608	614	633	636	693	595	730	1,080	964	601	637	625	638
1998/99	438	452	453	483	602	632	444	560	876	801	486	482	748	558
1999/00	344	328	332	356	474	496	365	413	780	744	309	359	539	393
2000/01	311	295	295	336	352	428	350	428	768	685	235	372	323	299
2001/02	363	376	376	412	396	445	513	587	716	659	329	451	388	422
2002/03	486	489	491	534	832	883	731	592	1,034	1,139	421	588	449	621
2003/04	661	567	542	633	688	752	738	663	1,317	1,178	481	670	630	625
2004/05	507	466	471	545	609	649	962	703	1,171	1,102	392	660	636	614
2005/06	516	474	467	573	649	669	896	635	981	931	416	770	583	555
<b>2006/07</b>														
Oct	547	544	517	615	605	628	1,167	666	1,161	1,068	450	781	626	545
Nov	609	629	609	675	666	690	1,235	722	1,157	1,120	511	814	656	584
Dec	610	629	645	699	677	697	1,242	730	1,102	1,174	559	856	732	618
Jan	617	620	655	697	683	708	1,225	719	1,086	1,180	569	818	731	618
Feb	638	605	607	714	721	738	1,202	709	1,020	1,173	573	781	763	632
Mar	656	605	606	718	728	748	1,174	713	1,063	1,157	593	765	769	641
Apr	685	645	623	761	758	NA	1,162	755	1,160	1,202	684	799	828	660
May	725	637	611	788	832	NA	1,178	831	1,226	1,159	770	825	894	696
Jun	750	745	743	833	882	NA	1,263	916	1,379	1,209	781	860	979	765
Jul	788	780	768	885	936	NA	1,433	999	1,535	1,342	789	921	929	821
Aug	769	810	881	908	929	NA	1,517	1,114	1,543	1,404	782	955	910	873
Sep	813	829	738	959	1,026	NA	1,554	1,279	1,609	1,445	798	1,051	930	961
<b>Average</b>	684	673	667	771	787	702	1,279	846	1,253	1,219	655	852	812	701
<b>2007/08</b>														
Oct	840	896	832	1,012	1,151	NA	1,620	1,358	1,692	1,463	848	1,195	1,010	1,157
Nov	941	1,020	1,080	1,138	1,402	NA	1,870	1,401	2,055	1,691	935	1,273	1,131	1,242
Dec	996	1,045	1,105	1,164	1,469	NA	1,907	1,469	2,172	1,777	948	1,386	1,153	1,311
Jan	1,097	1,177	1,160	1,276	1,580	NA	1,984	1,709	2,146	1,861	1,053	1,428	1,285	1,404
Feb	1,250	1,354	1,496	1,400	1,733	NA	2,116	1,839	2,183	1,958	1,192	1,434	1,382	1,651
Mar	1,263	1,346	1,401	1,476	1,740	NA	2,133	1,863	2,205	2,203	1,291	1,519	1,471	1,842
Apr	1,247	1,320	1,388	1,425	1,758	NA	2,050	1,838	2,301	2,200	1,247	1,469	1,443	1,920
May	1,285	1,322	1,240	1,436	1,824	NA	2,147	1,962	2,310	2,318	1,250	1,510	1,502	1,924
*Jun	1,376	1,382	1,243	1,537	1,931	NA	2,197	2,045	2,333	N/A	1,199	1,577	1,551	1,815
Jul														
Aug														
Sep														
<b>Average</b>	1144	1207	1216	1318	1621	NA	2,003	1,720	2,155	1,719	1,107	1,421	1,325	1,585

1/ Decatur; Average Wholesale Tank Crude; USDA. 2/ Brazil FOB; Bulk Rate; Safras & Mercado and Reuters

3/ Argentina FOB; Safras & Mercado and Reuters 4/ Dutch FOB; Ex-Mill; Oil World.

5/ Valley Points FOB. Tank Cars Crude; USDA. 6/ Rotterdam CIF/FOB Gulf since 1994; US PBSY; Oil World

7/ Minneapolis FOB; USDA. 8/ EU FOB NW Euro Ports; Oil World. 9/ South East Mills FOB; Tank Cars Crude; USDA.

10/ Rotterdam CIF; Any Origin; Oil World. 11/ Malaysia FOB;RBD; Porla & Oil World

12/ Rotterdam, Dutch, FOB Ex-Mill; Oilworld. 13/ Rotterdam CIF; Philippines/Indonesia; Oil World

14/ Decatur; Crude; AMS and Wall Street Journal.

\* Preliminary

7/11/2008 8:57:29 AM