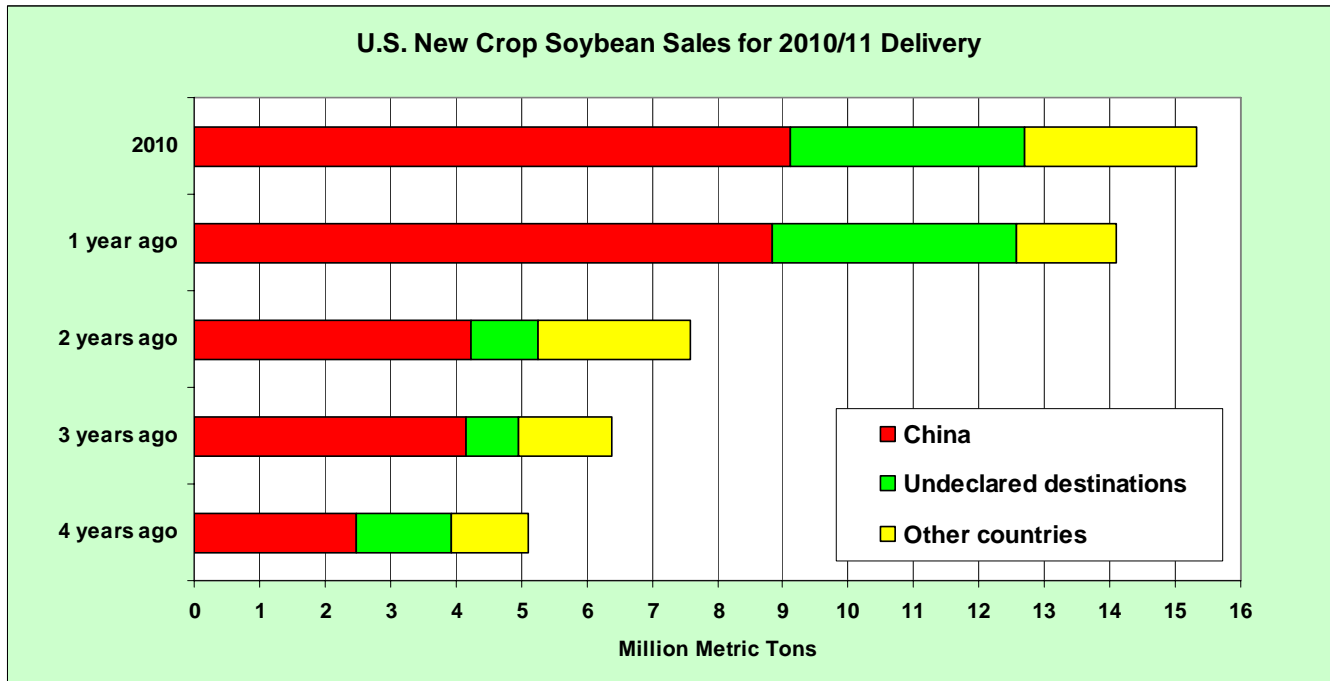




Oilseeds: World Markets and Trade

Record Early-Season Soybean Sales Brighten U.S. Export Outlook



The August 26 *Export Sales Report* shows new crop soybean sales at 15.3 million tons. While continued strong sales to China reflect robust crush activity stimulated by rising demand for vegetable oil and protein feeds, larger sales to other countries are also strong. In particular, bean sales to Egypt have dramatically grown as its crushing sector develops and demand for soybean meal expands. Smaller global feed grain supplies may have also triggered the rush for soybean purchases to secure adequate supplies, even though U.S. soybean prices continue to strengthen.

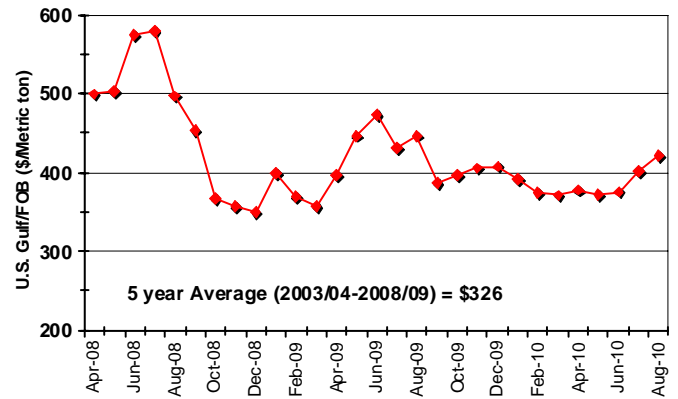
However, the record pace of U.S. sales is not currently expected to translate to record export volumes in the coming year, given projected large crops in South America. The early-season sales however do bode well for another good year of U.S. exports.

PRICES

U.S. soybean export bids, FOB Gulf, in August averaged \$421 per ton, up \$19 per ton from last month. Continued strong demand for export combined with rising prices for other feed grains have boosted soybean bids higher.

As of the week-ending August 26, U.S. soybean sales commitments (outstanding sales plus accumulated exports) to China totaled 23.2 million tons, compared to 19.8 million a year ago. Total commitments to the world amounted to a record 41.3 million tons compared to 36.1 million for the same period last year.

U.S. Gulf Soybean Export Bids



TRADE CHANGES IN 2010/11

- U.S. soybean exports are up 1.4 million tons to 40.4 million on a larger crop and stronger early-season sales.
- Argentina's and Brazil's soybean exports are up 1.0 million tons each to 13.5 million and 30.4 million, respectively, in response to strong demand from China.
- Canada's rapeseed exports are boosted 0.7 million tons to 6.0 million on a larger crop and improving demand in Asian countries.
- China's soybean imports are boosted 3.0 million tons to a record 55.0 million in response to continued strong crush demand for meal and oil.
- EU-27 soybean imports are up 0.4 million tons to 13.0 million on improved crush demand.
- Indonesia's palm oil exports are cut 0.9 million tons to 18.1 million due to reduced supplies.
- India's palm oil imports are cut 0.5 million tons to 7.0 million tons in response to smaller exportable supplies in Indonesia.

Table 01: Major Oilseeds: World Supply and Distribution (Commodity View)

Million Metric Tons

	2006/07	2007/08	2008/09	2009/10	Aug 2010/11	Sep 2010/11
Production						
Oilseed, Copra	5.27	5.72	5.88	5.88	5.96	5.96
Oilseed, Cottonseed	46.01	45.89	41.11	39.19	43.78	43.79
Oilseed, Palm Kernel	10.18	11.10	11.81	12.14	13.29	12.85
Oilseed, Peanut	31.03	32.59	34.47	32.97	34.67	34.49
Oilseed, Rapeseed	45.09	48.51	57.92	59.93	56.74	57.14
Oilseed, Soybean	237.13	221.01	211.96	259.89	253.69	254.89
Oilseed, Sunflowerseed	29.74	27.20	33.28	30.38	31.61	31.51
Total	404.45	392.01	396.44	440.38	439.74	440.62
Imports						
Oilseed, Copra	0.09	0.11	0.10	0.10	0.10	0.10
Oilseed, Cottonseed	0.84	0.75	0.55	0.69	0.66	0.66
Oilseed, Palm Kernel	0.13	0.14	0.07	0.04	0.04	0.04
Oilseed, Peanut	1.95	2.04	1.87	1.84	1.85	1.85
Oilseed, Rapeseed	7.01	7.56	12.13	10.29	9.13	9.48
Oilseed, Soybean	69.07	78.12	77.17	87.13	89.54	92.94
Oilseed, Sunflowerseed	1.76	1.25	1.79	1.73	1.30	1.30
Total	80.84	89.96	93.67	101.82	102.61	106.36
Exports						
Oilseed, Copra	0.13	0.13	0.12	0.14	0.15	0.15
Oilseed, Cottonseed	0.84	0.84	0.54	0.59	0.82	0.81
Oilseed, Palm Kernel	0.09	0.05	0.05	0.06	0.06	0.06
Oilseed, Peanut	2.39	2.45	2.34	2.20	2.32	2.32
Oilseed, Rapeseed	6.62	8.12	12.02	10.68	8.98	9.39
Oilseed, Soybean	71.32	79.59	77.25	90.84	91.11	94.52
Oilseed, Sunflowerseed	1.90	1.48	2.15	1.79	1.48	1.43
Total	83.28	92.67	94.48	106.29	104.92	108.68
Crush						
Oilseed, Copra	5.16	5.66	5.65	5.81	5.90	5.90
Oilseed, Cottonseed	33.70	34.35	31.85	30.72	32.67	32.81
Oilseed, Palm Kernel	10.04	11.01	11.56	12.04	13.07	12.65
Oilseed, Peanut	14.13	15.10	15.42	14.35	15.53	15.43
Oilseed, Rapeseed	43.62	46.65	52.06	56.66	55.77	55.86
Oilseed, Soybean	195.48	202.05	192.71	207.92	219.75	221.19
Oilseed, Sunflowerseed	26.05	24.27	29.00	28.04	28.29	28.31
Total	328.17	339.09	338.25	355.55	371.00	372.17
Ending Stocks						
Oilseed, Copra	0.10	0.11	0.29	0.29	0.28	0.28
Oilseed, Cottonseed	1.33	1.22	0.82	0.71	1.06	1.09
Oilseed, Palm Kernel	0.18	0.20	0.36	0.31	0.38	0.36
Oilseed, Peanut	1.21	1.07	1.50	1.34	1.18	1.27
Oilseed, Rapeseed	4.66	3.55	6.76	6.63	4.90	5.20
Oilseed, Soybean	63.16	52.89	43.97	62.85	64.73	63.61
Oilseed, Sunflowerseed	2.81	2.63	2.79	1.67	1.31	1.32
Total	73.45	61.66	56.48	73.80	73.83	73.12

Totals may not add due to rounding

Table 02: Major Protein Meals: World Supply and Distribution (Commodity View)

Million Metric Tons

	2006/07	2007/08	2008/09	2009/10	Aug 2010/11	Sep 2010/11
Production						
Meal, Copra	1.71	1.87	1.87	1.92	1.95	1.95
Meal, Cottonseed	15.33	15.59	14.35	13.98	14.86	14.93
Meal, Fish	5.07	5.24	5.10	4.50	4.76	4.99
Meal, Palm Kernel	5.33	5.86	6.15	6.40	6.94	6.72
Meal, Peanut	5.48	5.94	6.07	5.64	6.10	6.06
Meal, Rapeseed	25.91	27.64	30.80	33.60	33.06	33.10
Meal, Soybean	153.77	158.54	151.43	163.76	173.13	174.29
Meal, Sunflowerseed	11.48	10.60	12.78	12.35	12.47	12.48
Total	224.07	231.28	228.55	242.14	253.27	254.51
Imports						
Meal, Copra	0.57	0.70	0.59	0.77	0.75	0.75
Meal, Cottonseed	0.44	0.42	0.34	0.34	0.35	0.35
Meal, Fish	2.69	3.01	3.11	2.82	2.81	3.15
Meal, Palm Kernel	3.80	4.23	4.06	4.21	4.26	4.36
Meal, Peanut	0.15	0.13	0.05	0.06	0.04	0.04
Meal, Rapeseed	3.05	3.56	3.53	3.53	3.65	3.73
Meal, Soybean	52.55	54.07	51.18	53.21	55.38	55.63
Meal, Sunflowerseed	3.35	2.78	3.91	4.06	4.08	4.08
Total	66.60	68.89	66.78	69.00	71.33	72.10
Exports						
Meal, Copra	0.70	0.85	0.53	0.91	0.80	0.80
Meal, Cottonseed	0.41	0.42	0.39	0.35	0.38	0.39
Meal, Fish	2.59	2.85	2.95	2.49	2.59	2.93
Meal, Palm Kernel	3.94	4.40	4.64	4.87	5.07	5.07
Meal, Peanut	0.20	0.18	0.09	0.12	0.11	0.11
Meal, Rapeseed	2.96	3.69	3.55	3.51	3.82	3.77
Meal, Soybean	54.62	56.16	52.82	55.28	57.74	57.66
Meal, Sunflowerseed	3.49	3.28	4.30	4.23	4.33	4.33
Total	68.91	71.83	69.27	71.76	74.83	75.06
Domestic Consumption						
Meal, Copra	1.56	1.66	1.78	1.95	1.92	1.92
Meal, Cottonseed	15.42	15.65	14.35	13.92	14.83	14.90
Meal, Fish	5.00	5.37	5.34	4.90	5.00	5.25
Meal, Palm Kernel	5.24	5.72	5.65	5.78	6.02	5.98
Meal, Peanut	5.47	5.90	6.00	5.60	6.04	6.00
Meal, Rapeseed	26.35	27.51	30.80	33.60	32.91	33.07
Meal, Soybean	151.28	156.47	151.94	161.04	170.56	171.94
Meal, Sunflowerseed	11.39	10.03	12.09	12.38	12.21	12.22
Total	221.71	228.29	227.95	239.17	249.48	251.27
Ending Stocks						
Meal, Copra	0.10	0.17	0.31	0.14	0.12	0.12
Meal, Cottonseed	0.22	0.15	0.11	0.16	0.16	0.16
Meal, Fish	0.31	0.34	0.25	0.18	0.14	0.14
Meal, Palm Kernel	0.27	0.24	0.16	0.12	0.32	0.16
Meal, Peanut	0.02	0.02	0.05	0.03	0.02	0.02
Meal, Rapeseed	0.25	0.25	0.24	0.25	0.23	0.23
Meal, Soybean	6.38	6.36	4.23	4.87	5.09	5.19
Meal, Sunflowerseed	0.21	0.28	0.58	0.37	0.37	0.38
Total	7.76	7.81	5.92	6.13	6.46	6.41

Totals may not add due to rounding

Table 03: Major Vegetable Oils: World Supply and Distribution (Commodity View)

Million Metric Tons

	2006/07	2007/08	2008/09	2009/10	Aug 2010/11	Sep 2010/11
Production						
Oil, Coconut	3.22	3.53	3.52	3.62	3.68	3.68
Oil, Cottonseed	5.13	5.22	4.82	4.67	4.96	4.99
Oil, Olive	2.91	2.84	2.95	2.91	2.94	2.94
Oil, Palm	37.25	40.95	43.86	45.00	49.34	47.84
Oil, Palm Kernel	4.48	4.90	5.19	5.40	5.85	5.68
Oil, Peanut	4.53	4.91	5.00	4.66	5.05	5.02
Oil, Rapeseed	17.12	18.39	20.45	22.31	21.95	21.97
Oil, Soybean	36.33	37.57	35.70	38.44	40.82	41.10
Oil, Sunflowerseed	10.60	9.92	11.87	11.47	11.55	11.56
Total	121.55	128.22	133.36	138.47	146.14	144.76
Imports						
Oil, Coconut	1.87	1.95	1.65	2.02	1.99	2.02
Oil, Cottonseed	0.08	0.09	0.08	0.06	0.06	0.06
Oil, Olive	0.66	0.59	0.57	0.57	0.65	0.61
Oil, Palm	26.74	30.78	34.06	34.72	37.30	37.03
Oil, Palm Kernel	2.07	2.10	2.33	2.44	2.50	2.50
Oil, Peanut	0.18	0.15	0.14	0.18	0.16	0.16
Oil, Rapeseed	2.20	2.02	2.44	2.76	2.75	2.75
Oil, Soybean	9.92	10.50	8.96	8.70	8.84	8.86
Oil, Sunflowerseed	3.33	2.73	3.97	3.90	3.99	3.96
Total	47.04	50.90	54.20	55.35	58.24	57.94
Exports						
Oil, Coconut	1.74	1.92	1.49	2.11	1.96	1.96
Oil, Cottonseed	0.16	0.17	0.17	0.11	0.15	0.15
Oil, Olive	0.72	0.65	0.64	0.63	0.63	0.64
Oil, Palm	27.54	32.19	34.58	35.48	38.06	37.51
Oil, Palm Kernel	2.13	2.29	2.60	3.08	3.22	3.22
Oil, Peanut	0.17	0.16	0.19	0.16	0.15	0.15
Oil, Rapeseed	2.03	1.91	2.42	2.57	2.60	2.56
Oil, Soybean	10.56	10.89	9.12	8.99	8.99	9.06
Oil, Sunflowerseed	4.04	3.48	4.59	4.59	4.42	4.38
Total	49.08	53.67	55.81	57.72	60.18	59.63
Domestic Consumption						
Oil, Coconut	3.28	3.45	3.36	3.78	3.75	3.77
Oil, Cottonseed	5.04	5.11	4.78	4.63	4.88	4.91
Oil, Olive	2.89	2.94	2.99	3.01	3.00	3.01
Oil, Palm	35.88	39.75	42.43	45.00	47.95	47.60
Oil, Palm Kernel	4.41	4.59	4.88	4.94	5.16	5.03
Oil, Peanut	4.69	4.84	4.86	4.83	4.97	4.93
Oil, Rapeseed	17.52	18.47	20.13	22.13	22.24	22.30
Oil, Soybean	35.39	37.76	35.91	38.09	40.97	41.31
Oil, Sunflowerseed	10.19	8.97	10.67	11.34	11.28	11.27
Total	119.30	125.87	130.02	137.75	144.19	144.13
Ending Stocks						
Oil, Coconut	0.29	0.40	0.72	0.47	0.42	0.42
Oil, Cottonseed	0.22	0.24	0.18	0.17	0.16	0.17
Oil, Olive	1.09	0.93	0.82	0.65	0.75	0.56
Oil, Palm	4.73	4.51	5.43	4.68	5.26	4.43
Oil, Palm Kernel	0.49	0.61	0.65	0.46	0.45	0.39
Oil, Peanut	0.08	0.14	0.23	0.08	0.17	0.17
Oil, Rapeseed	0.45	0.47	0.83	1.19	1.05	1.05
Oil, Soybean	3.70	3.11	2.73	2.79	2.45	2.38
Oil, Sunflowerseed	0.66	0.86	1.45	0.88	0.76	0.75
Total	11.71	11.28	13.02	11.37	11.46	10.31

Totals may not add due to rounding

Table 04: Major Oilseeds: World Supply and Distribution (Country View)

Million Metric Tons

	2006/07	2007/08	2008/09	2009/10	Aug 2010/11	Sep 2010/11
Production						
United States	96.84	82.45	89.20	98.90	103.34	104.81
Brazil	62.01	64.23	60.28	71.46	68.00	68.00
China	55.23	53.35	58.12	57.27	56.81	56.22
Argentina	53.36	51.89	35.51	57.94	54.52	54.52
India	29.92	33.95	33.40	31.42	34.65	34.65
Other	107.09	106.13	119.93	123.39	122.42	122.43
Total	404.45	392.01	396.44	440.38	439.74	440.62
Imports						
China	29.70	38.64	44.14	52.12	53.26	56.51
EU-27	17.16	17.02	18.00	16.17	15.66	16.16
Japan	6.54	6.51	5.74	6.14	6.00	6.10
Mexico	5.42	5.29	4.77	5.10	5.14	5.14
Taiwan	2.44	2.16	2.22	2.51	2.51	2.51
Turkey	1.94	2.14	1.68	2.41	2.17	2.07
Thailand	1.58	1.82	1.57	1.64	1.88	1.88
Indonesia	1.52	1.40	1.63	1.70	1.80	1.80
Egypt	1.34	1.08	1.60	1.67	1.70	1.70
Russia	0.18	0.61	0.97	1.20	1.28	1.38
Other	13.02	13.30	11.37	11.17	11.23	11.13
Total	80.84	89.96	93.67	101.82	102.61	106.36
Exports						
United States	31.65	33.05	35.70	41.61	40.31	41.57
Brazil	23.54	25.44	30.13	28.56	29.51	30.51
Argentina	10.23	14.40	6.31	12.13	13.18	14.18
Canada	7.26	7.64	10.00	9.34	7.66	8.41
Paraguay	4.39	5.55	2.67	5.43	4.89	4.89
Ukraine	1.24	1.17	3.68	2.36	2.20	2.03
Australia	0.26	0.50	1.16	1.24	1.71	1.71
Other	4.72	4.93	4.83	5.63	5.46	5.39
Total	83.28	92.67	94.48	106.29	104.92	108.68
Crush						
China	65.28	68.47	73.12	80.99	88.11	88.82
United States	53.48	53.50	49.34	51.41	49.28	49.44
Argentina	36.98	39.31	35.00	36.39	43.24	43.48
EU-27	36.32	38.05	39.51	41.62	40.62	40.82
Brazil	33.47	34.68	34.06	35.47	35.37	35.37
India	24.49	27.79	26.14	25.20	27.80	28.00
Russia	7.16	6.71	8.30	8.69	8.63	8.56
Indonesia	5.74	6.20	6.70	7.17	7.96	7.62
Ukraine	5.39	4.69	6.96	7.00	6.74	6.72
Canada	5.10	5.53	5.57	6.06	6.60	6.60
Mexico	5.70	5.64	5.19	5.43	5.48	5.48
Malaysia	4.40	4.97	4.91	5.11	5.28	5.28
Pakistan	5.16	4.65	4.84	5.21	5.09	5.09
Japan	5.17	5.17	4.73	4.85	4.74	4.82
Turkey	3.08	2.99	2.58	2.80	2.81	2.81
Other	31.25	30.76	31.31	32.16	33.29	33.31
Total	328.17	339.09	338.25	355.55	371.00	372.17
Ending Stocks						
Argentina	24.04	23.59	17.46	25.28	22.10	20.48
China	2.70	4.25	10.44	16.38	14.91	17.06
Brazil	18.33	19.11	12.16	16.65	16.59	15.49
United States	17.02	6.91	5.62	5.50	11.32	11.02
EU-27	3.22	2.06	3.26	2.67	1.77	2.02
Other	8.14	5.75	7.53	7.31	7.15	7.06
Total	73.45	61.66	56.48	73.80	73.83	73.12

Major Oilseeds includes Copra, Cottonseed, Palm Kernel, Peanut, Rapeseed, Soybeans and Sunflowerseeds.

