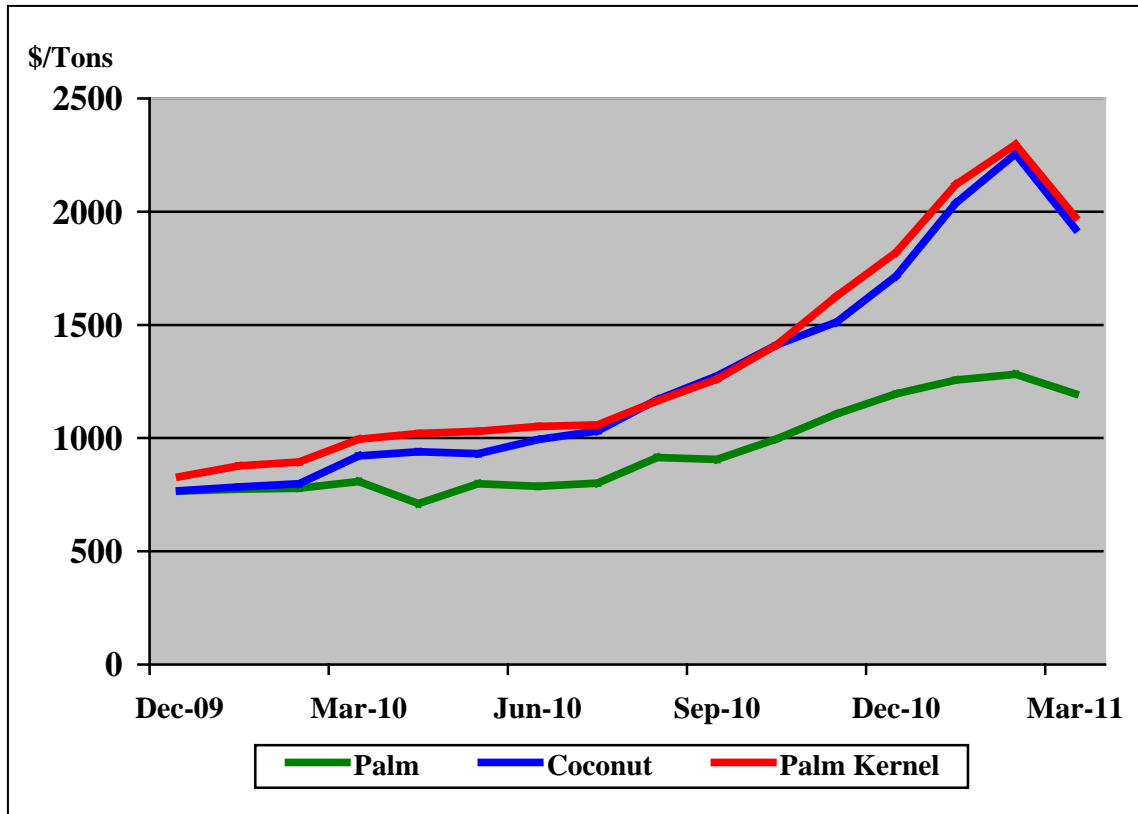


Oilseeds: World Markets and Trade

Lauric Oil Prices Descend from Near Record Levels with Prospects of Larger Supplies



Lauric oil prices declined in March as buyers reduced purchases in response to record prices and expected larger supplies over the next few months. Malaysia's monthly production of palm and palm kernel oil is expected to rebound as above normal rainfall ensures a normal seasonal increase in production. While this should ease the very tight supply situation prevailing for all vegetable oils, and in particular palm kernel and coconut oil, it is unlikely to cause a serious dent in the overall price of the past few months. Underlying supply and demand factors influencing vegetable oil prices still remain unchanged.

While monthly production of palm and palm kernel oil should improve, it is unlikely to reach levels attained last year. Demand for vegetable oils, particularly palm kernel oil, grew significantly in 2010 and is expected to remain strong. Rising petroleum prices continue to support higher vegetable oil prices.

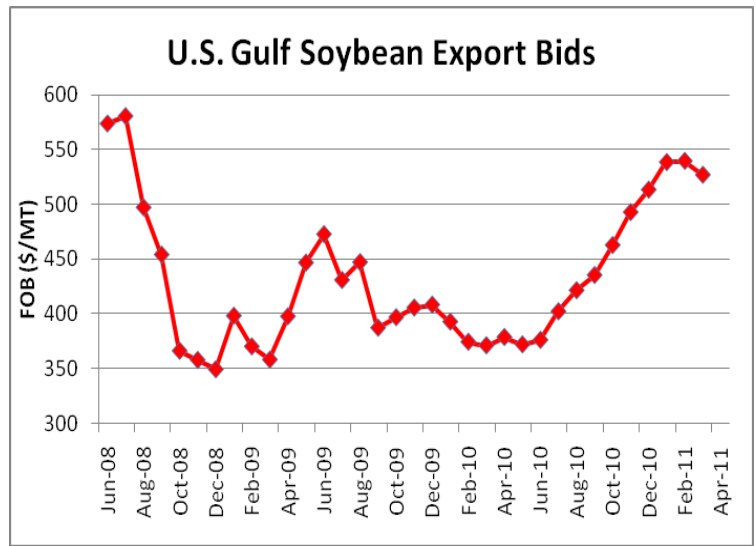
OVERVIEW

U.S. soybean exports are marginally reduced to reflect a slowing pace in shipments. Export prices, FOB Gulf, have declined, pressured by expected bumper crops in Brazil and Paraguay.

SOYBEAN PRICES

U.S. export bids, FOB Gulf, in March averaged \$527 per ton, a \$12 decrease from last month. Advancing harvests of expected record crops in Brazil and Paraguay, and a slow pace in shipments contributed to the price decline.

As of the week-ending March 31, U.S. soybean sales commitments (outstanding sales plus accumulated exports) to China totaled 25.2 million tons, compared to 21.7 million a year ago. Total commitments for the 2010/11 to the world are 40.4 million tons compared to 36.5 million for the same period last year.



TRADE CHANGES IN 2010/11

- U.S. soybean exports are cut 0.3 million tons to 43.0 million due to a slowdown in the pace of shipments.
- Brazil's soybean exports are up 0.3 million tons to 32.8 million on a record crop.
- Paraguay's soybean exports are up 0.4 million tons to 6.0 million on a record crop.
- Mexico's, Pakistan's, and United Arab Emirates' rapeseed imports are raised 0.2 million tons each in response to strong crush demand.
- Malaysia's palm oil exports are cut 0.2 million tons to 15.9 million due to reduced availability.

Table 01: Major Oilseeds: World Supply and Distribution (Commodity View)

Million Metric Tons

	2006/07	2007/08	2008/09	2009/10	Mar 2010/11	Apr 2010/11
Production						
Oilseed, Copra	5.27	5.72	5.88	5.88	5.96	5.89
Oilseed, Cottonseed	46.03	45.89	41.08	39.22	43.33	43.19
Oilseed, Palm Kernel	10.08	11.03	11.74	12.22	12.73	12.73
Oilseed, Peanut	31.03	32.59	34.47	32.99	34.71	34.71
Oilseed, Rapeseed	45.12	48.56	57.91	60.62	58.39	58.56
Oilseed, Soybean	236.23	220.40	211.95	260.22	258.40	260.97
Oilseed, Sunflowerseed	29.74	27.20	33.27	30.45	30.65	30.93
Total	403.51	391.39	396.31	441.60	444.17	446.97
Imports						
Oilseed, Copra	0.09	0.11	0.11	0.10	0.10	0.10
Oilseed, Cottonseed	0.85	0.75	0.53	0.57	0.68	0.68
Oilseed, Palm Kernel	0.13	0.14	0.07	0.04	0.04	0.04
Oilseed, Peanut	1.95	2.03	1.88	1.95	1.84	1.96
Oilseed, Rapeseed	6.99	7.54	12.12	10.73	10.15	10.83
Oilseed, Soybean	69.06	78.11	77.38	86.72	95.79	95.37
Oilseed, Sunflowerseed	1.76	1.25	1.82	1.48	1.35	1.28
Total	80.82	89.93	93.90	101.57	109.94	110.25
Exports						
Oilseed, Copra	0.13	0.13	0.13	0.12	0.12	0.12
Oilseed, Cottonseed	0.81	0.81	0.56	0.59	0.65	0.71
Oilseed, Palm Kernel	0.11	0.04	0.02	0.02	0.02	0.02
Oilseed, Peanut	2.39	2.44	2.42	2.39	2.27	2.49
Oilseed, Rapeseed	6.62	8.15	12.05	10.82	10.28	10.53
Oilseed, Soybean	70.86	78.78	76.84	92.66	98.26	98.51
Oilseed, Sunflowerseed	1.90	1.48	2.14	1.56	1.53	1.48
Total	82.80	91.83	94.16	108.16	113.12	113.86
Crush						
Oilseed, Copra	5.16	5.66	5.64	5.81	5.91	5.91
Oilseed, Cottonseed	33.72	34.36	31.72	30.64	32.62	32.48
Oilseed, Palm Kernel	9.94	10.97	11.52	12.29	12.63	12.63
Oilseed, Peanut	14.00	15.10	15.42	14.23	15.32	15.22
Oilseed, Rapeseed	43.64	46.70	52.12	57.03	57.55	58.43
Oilseed, Soybean	196.09	202.81	193.22	209.24	226.48	225.28
Oilseed, Sunflowerseed	26.05	24.27	29.01	28.09	27.35	27.19
Total	328.57	339.86	338.66	357.33	377.86	377.14
Ending Stocks						
Oilseed, Copra	0.10	0.11	0.29	0.31	0.31	0.24
Oilseed, Cottonseed	1.34	1.21	0.80	0.67	1.35	1.26
Oilseed, Palm Kernel	0.17	0.19	0.36	0.19	0.20	0.20
Oilseed, Peanut	1.24	1.10	1.51	1.29	1.15	1.18
Oilseed, Rapeseed	4.65	3.49	6.60	7.43	5.50	5.04
Oilseed, Soybean	62.24	51.42	42.57	58.88	58.33	60.94
Oilseed, Sunflowerseed	2.81	2.63	2.84	1.51	1.25	1.71
Total	72.55	60.15	54.97	70.29	68.08	70.58

Totals may not add due to rounding

Table 02: Major Protein Meals: World Supply and Distribution (Commodity View)

Million Metric Tons

	2006/07	2007/08	2008/09	2009/10	Mar 2010/11	Apr 2010/11
Production						
Meal, Copra	1.71	1.87	1.87	1.92	1.95	1.95
Meal, Cottonseed	15.34	15.60	14.29	13.92	14.89	14.84
Meal, Fish	5.07	5.24	5.10	4.31	4.97	4.97
Meal, Palm Kernel	5.27	5.83	6.12	6.53	6.70	6.70
Meal, Peanut	5.43	5.89	6.01	5.52	6.03	5.93
Meal, Rapeseed	25.92	27.67	30.83	33.81	34.12	34.63
Meal, Soybean	154.25	159.18	151.86	165.03	178.64	177.82
Meal, Sunflowerseed	11.48	10.60	12.79	12.51	12.21	12.14
Total	224.45	231.87	228.88	243.55	259.50	258.96
Imports						
Meal, Copra	0.66	0.72	0.64	0.80	0.77	0.77
Meal, Cottonseed	0.44	0.43	0.37	0.33	0.36	0.36
Meal, Fish	2.67	3.03	3.11	2.62	3.02	3.02
Meal, Palm Kernel	3.77	4.21	4.10	4.16	4.46	4.46
Meal, Peanut	0.16	0.14	0.06	0.11	0.05	0.05
Meal, Rapeseed	3.07	3.56	3.59	3.70	4.03	3.97
Meal, Soybean	52.55	54.19	51.06	52.46	57.65	57.12
Meal, Sunflowerseed	3.32	2.79	3.88	3.51	3.78	3.80
Total	66.63	69.05	66.81	67.69	74.13	73.56
Exports						
Meal, Copra	0.70	0.85	0.52	1.07	0.81	0.81
Meal, Cottonseed	0.42	0.43	0.40	0.36	0.32	0.36
Meal, Fish	2.60	2.84	2.95	2.26	2.87	2.87
Meal, Palm Kernel	3.94	4.40	4.66	4.88	5.03	5.03
Meal, Peanut	0.20	0.18	0.09	0.12	0.10	0.11
Meal, Rapeseed	2.94	3.68	3.55	3.48	4.22	4.41
Meal, Soybean	55.32	56.60	52.80	55.72	60.32	59.92
Meal, Sunflowerseed	3.49	3.28	4.30	4.16	4.15	4.19
Total	69.62	72.27	69.27	72.04	77.81	77.69
Domestic Consumption						
Meal, Copra	1.61	1.68	1.84	1.94	1.91	1.91
Meal, Cottonseed	15.42	15.65	14.31	13.84	14.94	14.87
Meal, Fish	4.97	5.40	5.36	4.71	5.16	5.16
Meal, Palm Kernel	5.15	5.67	5.66	5.78	6.14	6.14
Meal, Peanut	5.43	5.86	5.95	5.50	5.98	5.88
Meal, Rapeseed	26.39	27.54	30.89	34.00	33.87	34.22
Meal, Soybean	151.23	156.59	151.94	160.39	175.46	174.74
Meal, Sunflowerseed	11.36	10.04	12.04	11.99	11.87	11.82
Total	221.56	228.43	227.99	238.13	255.32	254.74
Ending Stocks						
Meal, Copra	0.14	0.19	0.33	0.05	0.05	0.05
Meal, Cottonseed	0.22	0.15	0.11	0.16	0.16	0.13
Meal, Fish	0.31	0.34	0.23	0.20	0.17	0.17
Meal, Palm Kernel	0.27	0.24	0.16	0.19	0.18	0.18
Meal, Peanut	0.02	0.02	0.05	0.05	0.03	0.04
Meal, Rapeseed	0.25	0.25	0.23	0.27	0.28	0.23
Meal, Soybean	6.07	6.24	4.41	5.80	6.42	6.07
Meal, Sunflowerseed	0.21	0.28	0.61	0.48	0.47	0.42
Total	7.48	7.71	6.13	7.20	7.75	7.28

Totals may not add due to rounding

Table 03: Major Vegetable Oils: World Supply and Distribution (Commodity View)

Million Metric Tons

	2006/07	2007/08	2008/09	2009/10	Mar 2010/11	Apr 2010/11
Production						
Oil, Coconut	3.22	3.53	3.53	3.62	3.68	3.68
Oil, Cottonseed	5.13	5.22	4.78	4.65	4.98	4.96
Oil, Olive	2.83	2.78	2.78	3.05	3.01	3.01
Oil, Palm	37.33	41.08	43.99	45.86	47.97	47.47
Oil, Palm Kernel	4.44	4.88	5.17	5.50	5.65	5.65
Oil, Peanut	4.49	4.86	4.95	4.55	4.98	4.89
Oil, Rapeseed	17.13	18.43	20.49	22.45	22.65	23.02
Oil, Soybean	36.50	37.78	35.84	38.77	42.13	42.00
Oil, Sunflowerseed	10.70	10.03	11.99	11.63	11.33	11.28
Total	121.75	128.58	133.53	140.08	146.37	145.96
Imports						
Oil, Coconut	1.87	1.90	1.65	2.24	2.02	2.02
Oil, Cottonseed	0.09	0.08	0.07	0.07	0.06	0.06
Oil, Olive	0.65	0.58	0.57	0.53	0.55	0.55
Oil, Palm	26.43	30.28	33.66	34.69	36.70	36.76
Oil, Palm Kernel	2.07	2.10	2.33	2.34	2.58	2.58
Oil, Peanut	0.18	0.15	0.14	0.19	0.16	0.17
Oil, Rapeseed	2.20	2.02	2.43	2.91	2.93	3.12
Oil, Soybean	9.93	10.42	9.08	8.70	9.34	9.44
Oil, Sunflowerseed	3.33	2.74	3.98	3.84	3.86	3.83
Total	46.74	50.27	53.91	55.51	58.20	58.53
Exports						
Oil, Coconut	1.74	1.93	1.48	2.17	1.88	1.88
Oil, Cottonseed	0.15	0.17	0.17	0.11	0.16	0.17
Oil, Olive	0.75	0.68	0.65	0.70	0.65	0.65
Oil, Palm	27.60	32.31	34.80	35.63	37.30	37.53
Oil, Palm Kernel	2.13	2.32	2.60	2.92	3.27	3.27
Oil, Peanut	0.18	0.16	0.20	0.18	0.16	0.17
Oil, Rapeseed	1.99	1.90	2.43	2.72	2.97	3.15
Oil, Soybean	10.64	10.99	9.18	9.24	9.81	9.99
Oil, Sunflowerseed	4.04	3.49	4.56	4.67	4.33	4.36
Total	49.20	53.95	56.05	58.34	60.53	61.19
Domestic Consumption						
Oil, Coconut	3.32	3.43	3.39	3.88	3.89	3.89
Oil, Cottonseed	5.03	5.12	4.76	4.65	4.83	4.81
Oil, Olive	2.85	2.88	2.95	2.99	3.03	3.03
Oil, Palm	35.98	39.31	41.97	45.16	48.71	48.09
Oil, Palm Kernel	4.38	4.54	4.92	4.93	5.18	5.17
Oil, Peanut	4.64	4.78	4.81	4.72	4.93	4.86
Oil, Rapeseed	17.53	18.28	20.16	22.28	23.16	23.55
Oil, Soybean	35.43	37.67	36.04	38.29	42.06	41.98
Oil, Sunflowerseed	10.23	9.04	10.72	11.14	11.13	11.06
Total	119.38	125.04	129.71	138.04	146.92	146.43
Ending Stocks						
Oil, Coconut	0.36	0.44	0.75	0.55	0.48	0.48
Oil, Cottonseed	0.26	0.28	0.20	0.16	0.20	0.19
Oil, Olive	1.07	0.88	0.63	0.53	0.41	0.41
Oil, Palm	4.38	4.14	5.03	4.79	3.33	3.40
Oil, Palm Kernel	0.51	0.63	0.62	0.61	0.40	0.40
Oil, Peanut	0.08	0.14	0.24	0.07	0.11	0.11
Oil, Rapeseed	0.48	0.76	1.09	1.46	0.90	0.89
Oil, Soybean	3.86	3.39	3.10	3.04	2.65	2.50
Oil, Sunflowerseed	0.75	0.98	1.67	1.32	1.04	1.01
Total	11.76	11.63	13.31	12.52	9.51	9.39

Totals may not add due to rounding

Table 04: Major Oilseeds: World Supply and Distribution (Country View)

Million Metric Tons

	2006/07	2007/08	2008/09	2009/10	Mar 2010/11	Apr 2010/11
Production						
United States	96.84	82.45	89.20	98.90	100.47	100.47
Brazil	62.03	64.25	60.31	71.49	73.50	75.56
China	54.34	52.75	58.12	57.84	56.56	56.56
Argentina	53.36	51.89	35.51	57.94	53.59	54.09
India	29.92	33.95	33.40	31.67	34.65	34.45
Other	107.02	106.09	119.78	123.75	125.41	125.85
Total	403.51	391.39	396.31	441.60	444.17	446.97
Imports						
China	29.70	38.64	44.14	52.54	58.94	58.79
EU-27	17.16	17.02	18.03	15.52	17.36	17.39
Japan	6.55	6.52	5.74	5.91	5.89	5.96
Mexico	5.43	5.32	4.73	5.20	5.14	5.46
Taiwan	2.44	2.16	2.22	2.47	2.51	2.56
Thailand	1.58	1.82	1.56	1.73	1.88	1.89
Indonesia	1.52	1.40	1.63	1.89	1.84	1.89
Turkey	1.94	2.14	1.68	2.80	1.90	1.85
Egypt	1.34	1.08	1.60	1.68	1.80	1.80
Korea, South	1.41	1.38	1.30	1.35	1.40	1.40
Other	11.77	12.48	11.27	10.48	11.30	11.28
Total	80.82	89.93	93.90	101.57	109.94	110.25
Exports						
United States	31.65	33.05	35.69	41.77	44.25	43.98
Brazil	23.54	25.44	30.14	28.65	32.58	32.83
Argentina	10.23	14.40	6.31	13.82	11.71	11.72
Canada	7.26	7.67	10.00	9.47	9.67	9.92
Paraguay	3.94	4.73	2.28	5.40	5.69	6.03
Ukraine	1.24	1.17	3.68	2.42	2.53	2.53
Australia	0.26	0.50	1.21	1.37	1.68	1.76
Other	4.69	4.87	4.84	5.27	5.01	5.10
Total	82.80	91.83	94.16	108.16	113.12	113.86
Crush						
China	65.28	68.47	73.12	81.41	89.84	89.29
United States	53.48	53.50	49.34	51.45	49.46	49.35
EU-27	36.32	38.05	39.51	41.66	42.38	42.38
Argentina	36.98	39.31	35.01	37.28	42.42	41.66
Brazil	33.49	34.70	34.09	35.93	38.13	38.38
India	24.49	27.79	26.13	25.24	28.64	28.34
Russia	7.16	6.71	8.30	8.69	7.75	7.91
Indonesia	5.74	6.20	6.70	7.57	7.82	7.82
Canada	5.10	5.53	5.57	6.06	7.20	7.30
Ukraine	5.39	4.69	6.96	6.86	7.19	7.19
Mexico	5.70	5.67	5.14	5.54	5.48	5.80
Pakistan	5.16	4.65	4.84	5.23	5.23	5.37
Malaysia	4.40	4.97	4.91	4.97	5.05	5.05
Japan	5.17	5.17	4.73	4.79	4.70	4.75
Turkey	3.08	2.99	2.58	2.79	3.01	2.97
Other	31.63	31.48	31.74	31.87	33.61	33.62
Total	328.57	339.86	338.66	357.33	377.86	377.14
Ending Stocks						
Argentina	24.04	23.59	17.47	22.67	20.50	21.76
China	1.81	2.75	8.95	15.37	17.87	18.27
Brazil	18.33	19.11	12.16	16.12	15.59	17.05
United States	17.02	6.91	5.62	5.55	5.23	5.18
EU-27	3.22	2.06	3.22	2.54	2.03	1.91
Other	8.13	5.73	7.56	8.05	6.86	6.42
Total	72.55	60.15	54.97	70.29	68.08	70.58

Major Oilseeds includes Copra, Cottonseed, Palm Kernel, Peanut, Rapeseed, Soybeans and Sunflowerseeds.

Table 05: Major Protein Meals: World Supply and Distribution (Country View)

Million Metric Tons

	2006/07	2007/08	2008/09	2009/10	Mar 2010/11	Apr 2010/11
Production						
China	43.55	46.09	49.13	55.67	62.60	62.19
United States	41.45	40.87	37.72	40.05	38.41	38.42
Argentina	27.53	29.06	25.97	28.01	31.69	31.11
Brazil	25.27	26.15	25.78	27.19	28.74	28.91
EU-27	24.29	25.35	25.75	26.92	27.54	27.54
Other	62.37	64.34	64.53	65.70	70.53	70.79
Total	224.45	231.87	228.88	243.55	259.50	258.96
Imports						
EU-27	27.00	28.57	26.73	25.29	28.27	28.29
Korea, South	3.15	3.32	3.18	3.32	3.45	3.45
Vietnam	2.60	2.53	2.85	3.06	3.20	3.20
Thailand	2.65	2.29	2.59	2.93	3.06	3.01
Indonesia	2.41	2.63	2.56	2.66	2.83	2.88
Japan	2.17	2.11	2.23	2.51	2.55	2.44
China	1.38	1.96	1.81	2.16	2.16	2.26
Other	25.27	25.64	24.87	25.76	28.61	28.03
Total	66.63	69.05	66.81	67.69	74.13	73.56
Exports						
Argentina	26.42	27.90	24.75	25.55	29.95	29.56
Brazil	12.72	12.15	13.11	12.99	13.85	14.00
United States	8.26	8.71	7.94	10.32	8.52	8.56
India	5.22	6.60	4.63	3.98	5.28	5.29
Indonesia	2.10	2.44	2.68	2.87	3.06	3.06
Canada	1.63	1.99	1.95	2.06	2.72	2.79
Ukraine	1.51	1.30	2.27	2.52	2.60	2.61
Other	11.78	11.19	11.94	11.75	11.84	11.83
Total	69.62	72.27	69.27	72.04	77.81	77.69
Domestic Consumption						
China	43.95	47.26	49.56	56.43	63.39	63.45
EU-27	50.42	52.92	52.22	51.52	54.52	54.52
United States	34.86	34.20	31.67	30.98	31.81	31.74
Brazil	12.27	13.51	13.50	13.93	14.92	14.95
India	9.09	9.49	10.31	10.63	11.52	11.42
Japan	5.92	5.91	5.83	5.96	6.02	6.00
Mexico	6.04	5.60	5.37	5.47	5.69	5.73
Thailand	4.26	4.13	4.26	4.64	4.87	4.84
Korea, South	3.99	4.03	3.93	4.09	4.13	4.13
Russia	3.11	3.24	3.38	3.72	3.94	4.03
Other	47.65	48.13	47.97	50.76	54.51	53.94
Total	221.56	228.43	227.99	238.13	255.32	254.74
SME						
China	41.78	45.36	47.31	53.61	60.83	60.88
EU-27	46.39	48.54	47.25	46.54	49.40	49.40
United States	34.19	33.43	30.97	30.45	31.03	30.98
Brazil	12.06	13.29	13.30	13.73	14.66	14.69
India	7.73	8.31	8.98	9.16	10.05	9.93
Japan	5.82	5.80	5.69	5.83	5.88	5.87
Mexico	5.74	5.26	5.05	5.10	5.33	5.37
Other	55.36	55.52	55.60	58.61	62.91	62.31
Total	209.08	215.51	214.16	223.02	240.09	239.41
Ending Stocks						
Brazil	1.93	2.60	1.86	2.21	2.27	2.27
Argentina	1.56	1.31	1.08	2.06	2.22	2.03
EU-27	1.08	1.26	0.57	0.29	0.63	0.63
United States	0.39	0.33	0.25	0.34	0.33	0.33
Japan	0.35	0.34	0.22	0.29	0.32	0.23
Other	2.18	1.87	2.17	2.01	1.98	1.79
Total	7.48	7.71	6.13	7.20	7.75	7.28

Major Protein Meals include Copra, Cottonseed, Fish, Palm Kernel, Peanut, Rapeseed, Soybean, and Sunflower Meal.

Table 06: Major Vegetable Oils: World Supply and Distribution (Country View)

Million Metric Tons

	2006/07	2007/08	2008/09	2009/10	Mar 2010/11	Apr 2010/11
Production						
Indonesia	19.37	20.98	23.69	25.59	27.30	27.30
Malaysia	17.20	19.73	19.43	19.94	20.21	19.71
China	14.27	14.69	16.10	17.85	19.44	19.32
EU-27	13.68	14.45	15.44	16.69	16.62	16.62
United States	10.46	10.55	9.67	10.05	9.89	9.89
Argentina	7.71	8.49	7.37	7.69	8.73	8.59
Brazil	6.60	6.85	6.77	7.13	7.55	7.61
Other	32.47	32.85	35.06	35.14	36.62	36.92
Total	121.75	128.58	133.53	140.08	146.37	145.96
Imports						
China	8.50	8.76	9.77	9.00	9.91	9.98
India	5.44	5.91	8.79	9.07	9.17	9.16
EU-27	9.02	9.03	9.24	8.82	9.03	9.03
United States	2.53	3.11	3.23	3.34	3.27	3.33
Pakistan	1.65	2.02	2.00	2.07	2.34	2.24
Malaysia	0.96	1.33	1.61	1.98	2.05	2.10
Egypt	1.21	1.25	1.75	1.90	1.60	1.98
Bangladesh	1.23	1.13	0.96	1.31	1.31	1.40
Iran	1.17	1.28	1.17	1.14	1.23	1.15
Russia	0.85	1.20	0.72	0.74	0.88	0.91
Other	14.20	15.27	14.67	16.16	17.41	17.28
Total	46.74	50.27	53.91	55.51	58.20	58.53
Exports						
Indonesia	13.39	16.07	18.09	18.72	20.37	20.37
Malaysia	13.79	15.57	16.53	16.91	17.52	17.29
Argentina	6.87	7.05	5.64	5.18	6.10	6.09
Ukraine	1.89	1.35	2.16	2.69	2.55	2.55
Canada	1.30	1.36	1.57	1.86	2.08	2.14
United States	1.33	1.68	1.46	1.95	1.84	1.93
Brazil	2.50	2.44	1.97	1.49	1.70	1.74
Other	8.14	8.43	8.62	9.55	8.39	9.09
Total	49.20	53.95	56.05	58.34	60.53	61.19
Domestic Consumption						
China	22.56	23.34	24.74	26.91	29.43	29.40
EU-27	21.70	22.26	23.22	24.23	25.09	25.08
India	11.81	12.97	14.56	15.79	16.91	16.84
United States	11.71	12.25	11.17	11.22	11.80	11.76
Indonesia	5.32	5.51	5.86	6.62	7.05	7.06
Brazil	4.20	4.84	5.25	6.04	6.33	6.38
Malaysia	4.73	4.99	5.00	5.20	5.39	5.30
Pakistan	2.88	2.97	3.15	3.23	3.52	3.51
Russia	2.83	3.12	3.04	3.07	3.10	3.15
Argentina	0.89	1.43	1.85	2.36	2.73	2.72
Japan	2.19	2.22	2.15	2.16	2.15	2.15
Mexico	2.01	2.02	1.94	2.11	2.08	2.14
Egypt	1.29	1.43	1.72	1.97	1.89	2.05
Thailand	1.02	1.27	1.60	1.71	1.93	1.94
Nigeria	1.73	1.76	1.78	1.81	1.82	1.82
Other	22.50	22.67	22.69	23.62	25.71	25.14
Total	119.38	125.04	129.71	138.04	146.92	146.43
Ending Stocks						
EU-27	1.99	2.05	2.28	2.25	1.61	1.55
United States	1.74	1.46	1.74	1.95	1.48	1.49
Malaysia	2.04	2.54	2.05	1.87	1.11	1.10
China	0.25	0.23	1.26	1.10	0.93	0.93
Indonesia	1.20	0.63	0.40	0.73	0.68	0.68
Other	4.53	4.70	5.59	4.62	3.69	3.65
Total	11.76	11.63	13.31	12.52	9.51	9.39

Major Vegetable Oils includes Coconut, Cottonseed, Olive, Palm, Palm Kernel, Peanut, Rapeseed, Soybean, and Sunflowerseed oil.

Table 07: Soybeans: World Supply and Distribution

Thousand Metric Tons

	2006/07	2007/08	2008/09	2009/10	Mar 2010/11	Apr 2010/11
Production						
United States	87,001	72,859	80,749	91,417	90,610	90,610
Brazil	59,000	61,000	57,800	69,000	70,000	72,000
Argentina	48,800	46,200	32,000	54,500	49,500	49,500
China	15,074	13,400	15,540	14,980	15,200	15,200
India	7,690	9,470	9,100	9,000	9,600	9,600
Paraguay	5,856	6,900	4,000	7,200	7,500	8,100
Canada	3,466	2,696	3,336	3,507	4,345	4,345
Other	9,346	7,875	9,427	10,618	11,647	11,617
Total	236,233	220,400	211,952	260,222	258,402	260,972
Imports						
China	28,726	37,816	41,098	50,338	57,000	57,000
EU-27	15,291	15,123	13,213	12,301	14,000	14,000
Mexico	3,844	3,614	3,327	3,523	3,600	3,700
Japan	4,094	4,014	3,396	3,401	3,450	3,450
Taiwan	2,436	2,148	2,216	2,469	2,500	2,550
Thailand	1,532	1,753	1,510	1,660	1,830	1,830
Egypt	1,328	1,061	1,575	1,638	1,750	1,750
Indonesia	1,309	1,147	1,393	1,620	1,635	1,635
Korea, South	1,231	1,232	1,167	1,197	1,260	1,260
Russia	34	442	837	1,037	1,150	1,150
Other	9,238	9,761	7,644	7,531	7,614	7,045
Total	69,063	78,111	77,376	86,715	95,789	95,370
Exports						
United States	30,386	31,538	34,817	40,852	43,273	43,001
Brazil	23,485	25,364	29,987	28,578	32,500	32,750
Argentina	9,560	13,839	5,590	13,088	11,000	11,000
Paraguay	3,907	4,585	2,234	5,350	5,635	5,985
Canada	1,683	1,753	2,017	2,247	2,825	2,825
Other	1,840	1,696	2,197	2,548	3,025	2,949
Total	70,861	78,775	76,842	92,663	98,258	98,510
Crush						
China	35,970	39,518	41,035	48,830	57,800	57,400
United States	49,198	49,081	45,230	47,669	45,042	44,906
Argentina	33,586	34,607	31,243	34,127	39,000	38,240
Brazil	31,110	32,117	31,868	33,670	35,300	35,500
EU-27	14,670	14,870	12,860	12,510	13,600	13,600
India	6,485	8,400	7,200	7,090	8,900	8,900
Mexico	3,900	3,650	3,465	3,583	3,670	3,770
Japan	2,925	2,890	2,497	2,505	2,472	2,472
Taiwan	2,161	1,965	1,917	2,150	2,225	2,275
Russia	805	1,051	1,497	1,950	2,200	2,250
Paraguay	1,950	2,100	1,700	1,700	1,700	1,850
Egypt	1,250	1,129	1,545	1,635	1,744	1,744
Thailand	1,406	1,514	1,390	1,520	1,600	1,625
Bolivia	1,670	1,160	1,435	1,480	1,390	1,450
Canada	1,524	1,383	1,286	1,292	1,425	1,425
Other	7,475	7,377	7,054	7,524	8,413	7,868
Total	196,085	202,812	193,222	209,235	226,481	225,275
Ending Stocks						
Argentina	22,606	21,760	16,588	22,277	20,127	20,912
Brazil	18,189	18,898	12,037	16,063	15,438	16,888
China	1,807	2,752	7,555	13,259	16,309	16,709
United States	15,617	5,580	3,761	4,106	3,820	3,810
EU-27	1,118	814	558	277	550	502
Other	2,898	1,619	2,073	2,900	2,082	2,121
Total	62,235	51,423	42,572	58,882	58,326	60,942

Most countries are on an October/September Marketing Year (MY). The United States, Mexico, and Thailand are on a September/August MY. Canada is on an August/July MY. Paraguay is on a March/February MY and Turkey is on an March/February MY.

Table 08: Soybean Meal: World Supply and Distribution

Thousand Metric Tons

	2006/07	2007/08	2008/09	2009/10	Mar 2010/11	Apr 2010/11
Production						
China	28,465	31,280	32,475	38,644	45,778	45,461
United States	39,037	38,359	35,473	37,830	35,910	35,910
Argentina	26,061	27,071	24,363	26,621	30,175	29,600
Brazil	24,110	24,890	24,700	26,090	27,360	27,510
EU-27	11,550	11,715	10,131	9,880	10,714	10,714
India	5,176	6,705	5,746	5,660	7,100	7,100
Mexico	3,075	2,875	2,730	2,825	2,890	2,975
Other	16,774	16,288	16,238	17,480	18,713	18,546
Total	154,248	159,183	151,856	165,030	178,640	177,816
Imports						
EU-27	22,213	24,074	20,980	20,730	23,250	23,250
Vietnam	2,291	2,296	2,521	2,768	2,878	2,878
Indonesia	2,237	2,429	2,339	2,507	2,600	2,700
Thailand	2,275	1,935	2,160	2,513	2,600	2,600
Japan	1,737	1,747	1,812	2,106	2,100	2,050
Korea, South	1,870	1,760	1,813	1,737	1,850	1,850
Iran	817	900	1,046	1,525	1,800	1,800
Mexico	1,780	1,401	1,518	1,209	1,470	1,400
Malaysia	899	922	940	1,072	1,170	1,170
Canada	1,415	1,511	1,251	1,106	1,150	1,150
Other	15,013	15,211	14,680	15,187	16,781	16,267
Total	52,547	54,186	51,060	52,460	57,649	57,115
Exports						
Argentina	25,625	26,816	24,025	24,914	29,285	28,900
Brazil	12,715	12,138	13,109	12,985	13,850	14,000
United States	7,987	8,384	7,708	10,137	8,392	8,392
India	4,143	5,285	3,808	3,147	4,310	4,310
Paraguay	1,500	1,557	1,076	1,250	1,250	1,370
Other	3,351	2,421	3,075	3,285	3,231	2,946
Total	55,321	56,601	52,801	55,718	60,318	59,918
Domestic Consumption						
China	27,630	30,849	31,673	37,546	44,828	44,861
EU-27	33,228	35,169	31,579	30,138	33,256	33,256
United States	31,166	30,148	27,898	27,777	27,669	27,669
Brazil	11,118	12,257	12,418	12,835	13,545	13,545
Mexico	4,871	4,300	4,220	4,085	4,350	4,350
Japan	3,921	3,945	3,846	3,975	4,004	4,004
Thailand	3,348	3,250	3,200	3,663	3,848	3,866
Vietnam	2,291	2,296	2,478	2,768	2,956	2,956
India	1,020	1,450	1,950	2,490	2,795	2,795
Iran	1,566	1,836	1,796	2,509	2,818	2,779
Indonesia	2,236	2,370	2,383	2,527	2,600	2,700
Korea, South	2,661	2,506	2,452	2,413	2,470	2,470
Russia	1,442	1,560	1,646	1,874	2,187	2,221
Canada	2,476	2,485	2,185	2,000	2,084	2,084
Egypt	1,397	1,060	1,450	1,685	1,810	1,850
Other	20,862	21,113	20,766	22,106	24,235	23,334
Total	151,233	156,594	151,940	160,391	175,455	174,740
Ending Stocks						
Brazil	1,913	2,588	1,844	2,200	2,255	2,255
Argentina	1,504	1,137	845	1,866	2,046	1,856
EU-27	859	1,065	130	130	388	388
United States	311	266	213	274	272	272
Japan	292	312	195	256	287	207
Other	1,186	871	1,187	1,069	1,176	1,090
Total	6,065	6,239	4,414	5,795	6,424	6,068

Most countries are on an October/September Marketing Year (MY). The Mexico and Thailand are on a September/August MY. Canada is on an August/July MY. Paraguay is on a March/February MY. Vietnam and the Philippines are on a January/December MY and Bolivia is on a March/February MY.

Table 09: Soybean Oil: World Supply and Distribution

Thousand Metric Tons

	2006/07	2007/08	2008/09	2009/10	Mar 2010/11	Apr 2010/11
Production						
China	6,410	7,045	7,314	8,703	10,317	10,246
United States	9,294	9,335	8,503	8,897	8,634	8,630
Argentina	6,424	6,627	5,914	6,475	7,430	7,291
Brazil	5,970	6,160	6,120	6,460	6,770	6,810
EU-27	2,640	2,667	2,314	2,252	2,448	2,448
India	1,157	1,499	1,287	1,265	1,590	1,590
Mexico	695	650	620	640	645	673
Other	3,912	3,792	3,771	4,078	4,298	4,311
Total	36,502	37,775	35,843	38,770	42,132	41,999
Imports						
China	2,404	2,727	2,494	1,514	2,000	2,000
India	1,447	733	1,060	1,598	1,000	1,000
EU-27	991	1,040	793	543	950	950
Algeria	295	383	365	402	400	400
Morocco	360	421	350	379	400	400
Iran	606	545	376	275	375	375
Peru	300	292	272	352	350	370
Bangladesh	327	401	254	349	340	340
Venezuela	351	363	325	299	335	335
Korea, South	302	296	266	318	315	315
Other	2,545	3,215	2,521	2,675	2,871	2,951
Total	9,928	10,416	9,076	8,704	9,336	9,436
Exports						
Argentina	5,970	5,789	4,704	4,430	5,100	5,080
Brazil	2,462	2,388	1,909	1,449	1,640	1,680
United States	851	1,320	995	1,523	1,360	1,406
EU-27	243	333	399	380	337	400
Paraguay	338	399	229	250	272	280
Bolivia	231	141	248	255	210	245
United Arab Emirates	19	14	5	122	102	140
Other	529	607	688	833	789	763
Total	10,643	10,991	9,177	9,242	9,810	9,994
Domestic Consumption						
China	8,670	9,693	9,486	10,435	12,198	12,148
United States	8,426	8,317	7,378	7,195	7,757	7,756
Brazil	3,395	3,955	4,295	4,970	5,190	5,190
EU-27	3,368	3,377	2,779	2,400	2,916	2,916
India	2,500	2,330	2,300	2,810	2,700	2,700
Argentina	459	1,026	1,425	1,925	2,267	2,267
Mexico	820	839	800	855	845	860
Iran	775	725	580	550	625	608
Egypt	331	621	563	490	607	544
Japan	577	573	536	485	485	480
Korea, South	436	444	447	445	468	468
Morocco	445	450	426	425	465	430
Taiwan	415	412	385	400	384	415
Algeria	295	355	364	403	401	401
Peru	302	295	273	352	350	370
Other	4,219	4,257	4,001	4,151	4,405	4,424
Total	35,433	37,669	36,038	38,291	42,063	41,977
Ending Stocks						
United States	1,399	1,127	1,298	1,523	1,092	1,070
Brazil	510	394	316	394	350	350
EU-27	214	211	140	155	300	237
China	250	227	466	171	220	219
Argentina	485	297	82	202	265	146
Other	1,002	1,135	793	591	419	478
Total	3,860	3,391	3,095	3,036	2,646	2,500

Most countries are on an October/September Marketing Year (MY). Mexico is on a September/August MY. Peru is on an January/December MY and Paraguay and Bolivia are on a March/February MY.

Table 10: Soybeans and Products: World Trade
Thousand Metric Tons

Marketing Year	Meal, Soybean			Oil, Soybean			Oilseed, Soybean			
	2008/09	2009/10	2010/11	2008/09	2009/10	2010/11	2008/09	2009/10	2010/11	
Exports										
North America	7,790	10,269	8,579	1,034	1,574	1,465	36,834	43,099	45,826	
Canada	(Aug-Jul)	82	126	180	38	47	55	2,017	2,247	2,825
United States	(Sep-Aug)	7,708	10,137	8,392	995	1,523	1,406	34,817	40,852	43,001
South America		37,134	40,249	45,340	4,704	6,399	7,300	36,705	1,770	51,378
Argentina	(Oct-Sep)	24,025	24,914	28,900	4,704	4,430	5,080	5,590	13,088	11,000
Brazil	(Oct-Sep)	13,109	12,985	14,000	1,909	1,449	1,680	29,987	28,578	32,750
Paraguay	(Mar-Feb)	1,076	1,250	1,370	229	250	280	2,234	5,350	5,985
South Asia		3,811	3,155	4,320	2	2	2	0	0	15
India	(Oct-Sep)	3,808	3,147	4,310	2	2	2	55	15	15
Other		4,066	2,045	1,679	3,437	1,267	1,227	3,303	47,794	1,291
World Total		52,801	55,718	59,918	9,177	9,242	9,994	76,842	92,663	98,510
Imports										
European Union		0	0	23,250	0	0	950	0	0	14,000
East Asia		3,963	3,958	4,190	2,904	1,953	2,433	5,612	57,429	64,285
China	(Oct-Sep)	215	83	250	2,494	1,514	2,000	41,098	50,338	57,000
Japan	(Oct-Sep)	1,812	2,106	2,050	39	29	25	3,396	3,401	3,450
Korea, South	(Oct-Sep)	1,813	1,737	1,850	266	318	315	1,167	1,197	1,260
Taiwan	(Oct-Sep)	113	25	30	11	0	0	2,216	2,469	2,550
Southeast Asia		4,702	9,955	10,520	40	305	327	1,748	0	4,605
Indonesia	(Oct-Sep)	2,339	2,507	2,700	13	19	18	1,393	1,620	1,635
Malaysia	(Oct-Sep)	940	1,072	1,170	102	109	110	530	583	610
Philippines	(Jan-Dec)	1,295	1,073	1,150	2	8	8	35	111	110
Thailand	(Sep-Aug)	2,160	2,513	2,600	0	0	0	1,510	1,660	1,830
Vietnam	(Jan-Dec)	2,521	2,768	2,878	87	135	156	184	220	400
North America		1,331	2,460	2,699	245	283	324	748	4,295	4,458
Canada	(Aug-Jul)	1,251	1,106	1,150	45	43	40	387	375	350
Mexico	(Sep-Aug)	1,518	1,209	1,400	159	194	205	3,327	3,523	3,700
South America		619	4,288	4,569	4	1,019	1,102	1,312	0	835
Brazil	(Oct-Sep)	83	86	90	6	37	16	44	174	175
Colombia	(Oct-Sep)	825	885	950	164	184	235	290	348	350
Central America		271	865	910	162	170	186	0	0	239
Caribbean		480	820	877	139	308	337	0	0	120
Middle East		30	35	4,085	12	453	593	1,007	3,792	3,046
Iran	(Oct-Sep)	1,046	1,525	1,800	376	275	375	783	1,070	1,070
Israel	(Oct-Sep)	85	81	80	10	9	9	325	321	325
Syria	(Jan-Dec)	706	469	560	5	4	4	560	540	550
Turkey	(Nov-Oct)	399	413	300	10	9	10	1,007	1,860	1,100
North Africa		1,018	2,019	2,165	1,165	1,149	1,220	1,575	1,825	1,975
Egypt	(Oct-Sep)	291	400	450	320	243	300	1,575	1,638	1,750
Other		38,646	28,060	3,850	4,405	3,064	1,964	65,374	19,374	1,807
World Total		51,060	52,460	57,115	9,076	8,704	9,436	77,376	86,715	95,370

Table 11: Palm Oil: World Supply and Distribution

Thousand Metric Tons

	2006/07	2007/08	2008/09	2009/10	Mar 2010/11	Apr 2010/11
Production						
Indonesia	16,600	18,000	20,500	22,000	23,600	23,600
Malaysia	15,290	17,567	17,259	17,763	18,000	17,500
Thailand	1,170	1,050	1,540	1,345	1,500	1,500
Nigeria	810	820	850	850	850	850
Colombia	755	780	795	770	820	820
Other	2,704	2,867	3,048	3,134	3,202	3,202
Total	37,329	41,084	43,992	45,862	47,972	47,472
Imports						
India	3,650	5,013	6,867	6,603	7,200	7,200
China	5,139	5,223	6,118	5,760	6,250	6,250
EU-27	4,332	4,960	5,504	5,396	5,200	5,200
Pakistan	1,619	1,958	1,957	2,041	2,300	2,200
Malaysia	403	669	1,047	1,283	1,250	1,350
Egypt	768	553	1,024	1,174	850	1,225
Bangladesh	898	724	700	951	965	1,050
United States	702	952	1,036	994	953	907
Iran	419	610	504	548	620	620
Russia	524	739	517	527	600	600
Other	7,978	8,883	8,390	9,413	10,508	10,154
Total	26,432	30,284	33,664	34,690	36,696	36,756
Exports						
Indonesia	11,419	13,969	15,964	16,573	17,850	17,850
Malaysia	12,900	14,644	15,485	15,530	16,100	15,900
Papua New Guinea	383	451	496	490	500	496
Benin	273	358	348	450	480	485
United Arab Emirates	334	336	232	344	265	430
Other	2,293	2,549	2,270	2,242	2,102	2,371
Total	27,602	32,307	34,795	35,629	37,297	37,532
Domestic Consumption						
India	3,671	5,063	6,275	6,753	7,750	7,750
China	5,138	5,222	5,618	5,930	6,277	6,277
Indonesia	4,520	4,704	4,855	5,424	5,745	5,745
EU-27	4,218	4,717	5,039	5,347	5,188	5,185
Malaysia	3,109	3,170	3,229	3,527	3,700	3,630
Pakistan	1,662	1,816	1,953	1,971	2,250	2,150
Thailand	702	943	1,229	1,290	1,520	1,520
Nigeria	1,155	1,190	1,208	1,232	1,240	1,240
Bangladesh	880	797	700	911	960	1,045
Egypt	602	540	740	985	815	1,030
United States	663	948	959	956	974	910
Colombia	490	515	615	777	815	845
Iran	384	519	551	552	600	586
Japan	521	551	531	581	580	580
Russia	528	705	584	527	560	560
Other	7,739	7,906	7,886	8,394	9,738	9,037
Total	35,982	39,306	41,972	45,157	48,712	48,090
Ending Stocks						
Malaysia	1,615	2,037	1,629	1,618	950	938
EU-27	208	313	643	552	417	417
Indonesia	1,154	488	190	242	302	302
China	0	0	499	328	300	300
Thailand	243	20	218	153	163	163
Other	1,164	1,281	1,849	1,901	1,201	1,280
Total	4,384	4,139	5,028	4,794	3,333	3,400

Table 12: Rapeseed and Products: World Supply and Distribution
Thousand Metric Tons

Marketing Year	Meal, Rapeseed			Oil, Rapeseed			Oilseed, Rapeseed			
	2008/09	2009/10	2010/11	2008/09	2009/10	2010/11	2008/09	2009/10	2010/11	
Production										
China	(Oct-Sep)	8,325	9,156	9,148	4,700	5,170	5,165	12,100	13,657	12,800
India	(Oct-Sep)	3,260	3,525	3,588	2,058	2,230	2,265	6,700	6,400	7,000
Canada	(Aug-Jul)	2,490	2,775	3,420	1,780	1,980	2,440	12,643	12,417	11,866
Japan	(Oct-Sep)	1,249	1,277	1,275	884	904	901	1	1	1
EU-27	(Jul-Jun)	11,744	12,982	12,827	8,472	9,370	9,258	19,000	21,566	20,300
Other		3,766	4,097	4,370	2,593	2,799	2,987	7,464	6,583	6,590
World Total		30,834	33,812	34,628	20,487	22,453	23,016	57,908	60,624	58,557
Imports										
China	(Oct-Sep)	260	993	700	453	785	750	3,034	2,177	1,750
India	(Oct-Sep)	0	0	0	42	18	0	0	0	0
Canada	(Aug-Jul)	5	0	10	111	196	250	121	121	270
Japan	(Oct-Sep)	114	58	65	20	9	10	2,123	2,275	2,250
EU-27	(Jul-Jun)	171	134	170	454	441	500	3,355	2,106	2,200
Other		3,044	2,514	3,022	1,351	1,463	1,609	3,485	4,049	4,359
World Total		3,594	3,699	3,967	2,431	2,912	3,119	12,118	10,728	10,829
Exports										
China	(Oct-Sep)	268	127	60	9	5	5	0	0	0
India	(Oct-Sep)	774	786	925	1	1	0	1	0	0
Canada	(Aug-Jul)	1,861	1,927	2,600	1,527	1,805	2,080	7,898	7,172	7,050
Japan	(Oct-Sep)	5	0	0	0	0	0	0	0	0
EU-27	(Jul-Jun)	162	214	225	142	111	150	97	157	220
Other		483	426	603	747	793	918	4,049	3,492	3,260
World Total		3,553	3,480	4,413	2,426	2,715	3,153	12,045	10,821	10,530
Domestic Consumption										
China	(Oct-Sep)	8,317	10,022	9,788	4,853	5,641	6,100	13,740	15,114	15,100
India	(Oct-Sep)	2,475	2,700	2,715	2,099	2,247	2,265	6,143	6,666	6,800
Canada	(Aug-Jul)	630	808	830	405	410	570	4,636	4,912	6,220
Japan	(Oct-Sep)	1,354	1,336	1,339	919	920	918	2,205	2,255	2,246
EU-27	(Jul-Jun)	11,759	12,922	12,745	8,679	9,615	10,025	21,374	23,534	23,150
Other		6,359	6,208	6,800	3,202	3,450	3,674	6,769	7,217	7,732
World Total		30,894	33,996	34,217	20,157	22,283	23,552	54,867	59,698	61,248
Ending Stocks										
China	(Oct-Sep)	0	0	0	291	600	410	1,394	2,114	1,564
India	(Oct-Sep)	21	60	8	0	0	0	610	344	544
Canada	(Aug-Jul)	20	60	60	68	29	69	1,659	2,113	979
Japan	(Oct-Sep)	16	15	16	26	19	12	59	80	85
EU-27	(Jul-Jun)	95	75	102	474	559	142	1,843	1,824	954
Other		81	58	47	232	251	255	1,035	958	915
World Total		233	268	233	1,091	1,458	888	6,600	7,433	5,041

4/8/2011 7:19:37 AM

Table 13: Sunflowerseed and Products World Supply and Distribution
Thousand Metric Tons

Marketing Year	Oilseed, Sunflowerseed			Meal, Sunflowerseed			Oil, Sunflowerseed			
	2008/09	2009/10	2010/11	2008/09	2009/10	2010/11	2008/09	2009/10	2010/11	
Production										
Argentina	(Mar-Feb)	2,440	2,300	3,300	1,391	1,185	1,250	1,345	1,115	1,180
Russia	(Sep-Aug)	7,350	6,425	5,350	2,306	2,253	1,874	2,565	2,505	2,082
Turkey	(Sep-Aug)	830	800	1,000	460	559	540	515	626	607
Ukraine	(Sep-Aug)	7,000	6,350	6,750	2,600	2,550	2,675	2,632	2,545	2,667
EU-27	(Oct-Sep)	7,130	6,940	6,950	3,210	3,373	3,300	2,460	2,591	2,536
Other		8,524	7,638	7,578	2,824	2,590	2,496	2,472	2,246	2,203
World Total		33,274	30,453	30,928	12,791	12,510	12,135	11,989	11,628	11,275
Imports										
Argentina	(Mar-Feb)	128	30	70	0	0	0	0	0	0
Russia	(Sep-Aug)	12	23	40	0	2	1	37	55	130
Turkey	(Sep-Aug)	446	733	430	312	432	450	432	184	250
Ukraine	(Sep-Aug)	6	7	5	0	0	0	0	1	0
EU-27	(Oct-Sep)	635	269	300	2,496	2,007	2,050	1,030	936	900
Other		591	413	439	1,067	1,069	1,303	2,479	2,660	2,553
World Total		1,818	1,475	1,284	3,875	3,510	3,804	3,978	3,836	3,833
Exports										
Argentina	(Mar-Feb)	74	67	50	719	600	650	850	690	950
Russia	(Sep-Aug)	160	20	10	965	660	550	802	504	150
Turkey	(Sep-Aug)	13	20	10	6	5	5	131	68	80
Ukraine	(Sep-Aug)	767	354	400	2,209	2,516	2,600	2,098	2,645	2,500
EU-27	(Oct-Sep)	449	543	450	80	92	90	120	150	130
Other		681	559	562	322	287	292	559	610	552
World Total		2,144	1,563	1,482	4,301	4,160	4,187	4,560	4,667	4,362
Domestic Consumption										
Argentina	(Mar-Feb)	3,367	2,750	2,880	621	620	620	384	387	392
Russia	(Sep-Aug)	6,917	6,720	5,535	1,329	1,407	1,459	1,918	2,016	2,031
Turkey	(Sep-Aug)	1,216	1,477	1,427	766	986	985	794	810	790
Ukraine	(Sep-Aug)	6,285	6,031	6,350	386	44	65	375	156	159
EU-27	(Oct-Sep)	6,775	7,050	6,790	5,386	5,527	5,198	3,245	3,402	3,375
Other		8,182	7,662	7,551	3,551	3,401	3,493	4,001	4,372	4,308
World Total		32,742	31,690	30,533	12,039	11,985	11,820	10,717	11,143	11,055
Ending Stocks										
Argentina	(Mar-Feb)	812	325	765	215	180	160	324	362	200
Russia	(Sep-Aug)	575	283	128	16	204	70	59	99	130
Turkey	(Sep-Aug)	94	130	123	0	0	0	108	40	27
Ukraine	(Sep-Aug)	29	1	6	10	0	10	268	13	21
EU-27	(Oct-Sep)	780	396	406	309	70	132	437	412	343
Other		546	376	280	58	29	43	472	396	292
World Total		2,836	1,511	1,708	608	483	415	1,668	1,322	1,013

Table 14: Minor Vegetable Oil Supply and Distribution
Thousand Metric Tons

Marketing Year	Oil, Peanut			Oil, Cottonseed			Oil, Olive			
	2008/09	2009/10	2010/11	2008/09	2009/10	2010/11	2008/09	2009/10	2010/11	
Production										
China	(Oct-Sep)	2,174	2,189	2,250	1,600	1,466	1,352	nr	nr	nr
India	(Oct-Sep)	1,545	1,165	1,435	1,030	1,045	1,150	nr	nr	nr
Turkey	(Nov-Oct)	4	4	4	116	98	108	140	157	175
United States	(Aug-Jul)	65	63	74	303	280	370	2	3	4
EU-27	(Oct-Sep)	16	16	16	47	55	59	2,110	2,390	2,290
Other		1,148	1,113	1,113	1,684	1,704	1,925	532	498	544
World Total		4,952	4,550	4,892	4,780	4,648	4,964	2,784	3,048	3,013
Imports										
China	(Oct-Sep)	20	47	45	0	0	0	nr	nr	nr
India	(Oct-Sep)	0	0	0	5	9	0	nr	nr	nr
Turkey	(Nov-Oct)	0	0	0	7	5	5	0	0	0
United States	(Aug-Jul)	24	33	32	0	0	0	276	268	290
EU-27	(Oct-Sep)	76	79	75	3	2	3	103	79	75
Other		24	26	22	54	56	51	187	186	189
World Total		144	185	174	69	72	59	566	533	554
Exports										
China	(Oct-Sep)	10	9	10	5	4	3	nr	nr	nr
India	(Oct-Sep)	0	0	0	0	0	0	nr	nr	nr
Turkey	(Nov-Oct)	0	0	0	2	2	1	29	25	25
United States	(Aug-Jul)	4	5	5	87	43	79	3	3	3
EU-27	(Oct-Sep)	3	4	2	2	0	1	418	495	410
Other		180	163	156	69	63	88	201	173	213
World Total		197	181	173	165	112	172	651	696	651
Domestic Consumption										
China	(Oct-Sep)	2,184	2,227	2,285	1,595	1,462	1,349	nr	nr	nr
India	(Oct-Sep)	1,455	1,320	1,395	1,038	1,060	1,141	nr	nr	nr
Turkey	(Nov-Oct)	4	4	4	140	101	112	115	125	140
United States	(Aug-Jul)	88	91	100	227	254	284	275	268	291
EU-27	(Oct-Sep)	89	91	89	47	59	61	2,070	2,070	2,070
Other		985	986	984	1,716	1,716	1,867	487	525	531
World Total		4,805	4,719	4,857	4,763	4,652	4,814	2,947	2,988	3,032
Ending Stocks										
China	(Oct-Sep)	0	0	0	0	0	0	nr	nr	nr
India	(Oct-Sep)	165	10	50	60	54	63	nr	nr	nr
Turkey	(Nov-Oct)	0	0	0	0	0	0	11	18	28
United States	(Aug-Jul)	8	8	9	55	38	45	0	0	0
EU-27	(Oct-Sep)	5	5	5	3	1	1	515	419	304
Other		57	47	42	81	62	83	102	88	77
World Total		235	70	106	199	155	192	628	525	409

Table 15: World Oilseeds and Products Supply and Distribution

Million Metric Tons

	Area Harvested	Beginning Stocks	Production	Imports	Total Supply	Exports	Food Use Dom.	Domestic Consumpti	Ending Stocks
Major Oilseeds									
1997/98	177.25	20.98	286.75	48.00	355.72	49.26	22.21	275.17	31.30
1998/99	184.76	31.30	294.57	51.88	377.75	51.09	24.48	292.00	34.66
1999/00	188.48	34.66	304.27	59.20	398.13	59.43	25.51	300.13	38.57
2000/01	188.58	38.57	313.87	65.59	418.04	66.84	26.80	310.94	40.25
2001/02	188.58	40.25	324.75	63.67	428.68	62.30	27.52	323.89	42.48
2002/03	186.32	42.48	331.54	71.03	445.05	69.96	27.69	326.03	49.06
2003/04	199.70	49.06	335.77	64.07	448.90	66.79	27.86	337.10	45.01
2004/05	209.56	45.01	381.30	72.64	498.95	74.42	29.22	366.73	57.81
2005/06	211.11	57.81	391.29	75.39	524.48	75.39	29.91	384.57	64.53
2006/07	211.03	64.53	403.51	80.82	548.85	82.80	30.51	393.50	72.55
2007/08	206.13	72.55	391.39	89.93	553.87	91.83	30.59	401.89	60.15
2008/09	215.14	60.15	396.31	93.90	550.36	94.16	31.85	401.23	54.97
2009/10	215.58	54.97	441.60	101.57	598.14	108.16	32.92	419.70	70.29
2010/11	215.47	70.29	446.97	110.25	627.51	113.86	33.69	443.07	70.58
Major Protein Meals									
1997/98	nr	6.86	153.19	45.53	205.59	44.33	0.35	153.46	7.81
1998/99	nr	7.81	163.33	47.05	218.18	47.21	0.40	162.58	8.39
1999/00	nr	8.36	167.69	47.28	223.33	46.73	0.39	168.85	7.75
2000/01	nr	7.75	174.68	48.07	230.50	48.45	0.41	175.01	7.04
2001/02	nr	7.04	182.61	51.39	241.05	52.88	0.42	180.76	7.41
2002/03	nr	7.41	185.63	53.61	246.64	54.07	0.43	186.12	6.45
2003/04	nr	6.45	190.86	57.77	255.08	59.11	0.45	189.08	6.88
2004/05	nr	6.88	206.50	59.40	272.77	61.26	0.48	204.43	7.08
2005/06	nr	7.08	217.11	65.19	289.38	66.56	0.50	215.24	7.58
2006/07	nr	7.58	224.45	66.63	298.66	69.62	0.50	221.56	7.48
2007/08	nr	7.48	231.87	69.05	308.40	72.27	0.54	228.43	7.71
2008/09	nr	7.71	228.88	66.81	303.39	69.27	0.58	227.99	6.13
2009/10	nr	6.13	243.55	67.69	317.37	72.04	0.63	238.13	7.20
2010/11	nr	7.20	258.96	73.56	339.71	77.69	0.68	254.74	7.28
Major Vegetable Oils									
1997/98	7.69	7.28	75.22	24.68	107.19	26.18	66.33	73.76	7.25
1998/99	7.95	7.25	80.37	26.89	114.50	27.67	70.70	78.54	8.30
1999/00	8.33	8.15	86.04	26.58	120.77	28.69	74.35	82.84	9.24
2000/01	10.21	9.24	89.81	30.25	129.29	30.78	78.63	88.77	9.75
2001/02	10.54	9.75	92.76	30.79	133.29	32.99	80.22	91.11	9.19
2002/03	4.56	9.19	96.09	34.89	140.16	36.04	82.95	95.15	8.98
2003/04	4.54	8.98	102.89	37.67	149.54	39.30	86.92	100.71	9.53
2004/05	8.25	9.53	111.69	40.87	162.08	42.88	91.46	108.14	11.06
2005/06	8.36	11.06	118.90	44.37	174.33	47.80	94.14	114.69	11.84
2006/07	8.45	11.84	121.75	46.74	180.34	49.20	95.63	119.38	11.76
2007/08	8.69	11.76	128.58	50.27	190.61	53.95	98.42	125.04	11.63
2008/09	8.82	11.63	133.53	53.91	199.06	56.05	101.28	129.71	13.31
2009/10	8.92	13.31	140.08	55.51	208.89	58.34	106.80	138.04	12.52
2010/11	8.74	12.52	145.96	58.53	217.01	61.19	111.85	146.43	9.39

Based on the aggregate of different marketing years

Table 16: World: Soybeans and Products Supply and Distribution

Million Metric Tons

	Area Harvested	Beginning Stocks	Production	Imports	Total Supply	Exports	Crush	Domestic Consumpti	Ending Stocks
Oilseed, Soybean									
1997/98	68.53	15.83	157.95	38.16	211.94	39.31	123.21	145.06	27.57
1998/99	71.30	27.57	159.83	38.55	225.95	37.93	134.64	158.77	29.25
1999/00	71.91	29.25	160.35	45.57	235.17	45.63	135.00	159.22	30.32
2000/01	75.44	30.32	175.76	53.05	259.13	53.66	146.55	171.53	33.94
2001/02	79.47	33.94	184.82	54.39	273.14	52.90	158.01	184.47	35.77
2002/03	81.48	35.77	196.87	62.91	295.55	61.24	165.19	191.10	43.21
2003/04	88.41	43.21	186.64	54.00	283.85	56.04	164.21	189.70	38.11
2004/05	93.18	38.11	215.78	63.47	317.36	64.82	175.26	204.39	48.15
2005/06	92.92	48.15	220.67	64.13	332.94	63.43	186.14	216.14	53.38
2006/07	94.28	53.38	236.23	69.06	358.67	70.86	196.09	225.58	62.24
2007/08	90.65	62.24	220.40	78.11	360.75	78.78	202.81	230.55	51.42
2008/09	96.37	51.42	211.95	77.38	340.75	76.84	193.22	221.34	42.57
2009/10	102.22	42.57	260.22	86.72	389.51	92.66	209.24	237.96	58.88
2010/11	103.50	58.88	260.97	95.37	415.22	98.51	225.28	255.77	60.94
Meal, Soybean									
1997/98	nr	4.79	97.96	34.03	136.78	32.63	123.35	98.44	5.71
1998/99	nr	5.71	106.35	35.78	147.83	35.38	134.69	106.02	6.43
1999/00	nr	6.43	106.99	34.92	148.34	34.19	135.03	108.41	5.74
2000/01	nr	5.74	116.08	35.94	157.76	36.26	146.58	115.93	5.57
2001/02	nr	5.57	125.03	40.41	171.01	41.81	158.12	123.51	5.69
2002/03	nr	5.69	130.27	42.47	178.43	43.07	165.19	130.05	5.31
2003/04	nr	5.31	129.03	44.89	179.24	46.09	164.22	127.55	5.60
2004/05	nr	5.60	138.57	45.92	190.08	47.70	175.27	136.54	5.84
2005/06	nr	5.84	146.56	51.17	203.56	52.52	186.16	145.22	5.82
2006/07	nr	5.82	154.25	52.55	212.62	55.32	196.14	151.23	6.07
2007/08	nr	6.07	159.18	54.19	219.43	56.60	202.85	156.59	6.24
2008/09	nr	6.24	151.86	51.06	209.16	52.80	193.41	151.94	4.41
2009/10	nr	4.41	165.03	52.46	221.90	55.72	209.57	160.39	5.80
2010/11	nr	5.80	177.82	57.12	240.73	59.92	225.71	174.74	6.07
Oil, Soybean									
1997/98	nr	2.65	22.41	6.22	31.28	6.32	123.22	22.23	2.73
1998/99	nr	2.73	24.43	7.22	34.39	7.33	134.67	24.43	2.63
1999/00	nr	2.63	24.49	6.06	33.18	6.15	135.04	24.11	2.91
2000/01	nr	2.91	26.75	6.90	36.56	6.85	146.58	26.57	3.14
2001/02	nr	3.14	28.92	7.56	39.63	8.23	158.11	28.19	3.21
2002/03	nr	3.21	30.51	8.19	41.90	8.80	165.19	30.19	2.91
2003/04	nr	2.91	30.30	8.39	41.60	8.70	164.21	30.26	2.64
2004/05	nr	2.64	32.55	8.88	44.08	9.10	175.26	31.82	3.16
2005/06	nr	3.16	34.83	9.11	47.11	9.83	186.14	33.77	3.51
2006/07	nr	3.51	36.50	9.93	49.94	10.64	196.12	35.43	3.86
2007/08	nr	3.86	37.78	10.42	52.05	10.99	202.83	37.67	3.39
2008/09	nr	3.39	35.84	9.08	48.31	9.18	193.39	36.04	3.10
2009/10	nr	3.10	38.77	8.70	50.57	9.24	209.55	38.29	3.04
2010/11	nr	3.04	42.00	9.44	54.47	9.99	225.69	41.98	2.50

Based on the aggregate of different marketing years, primarily October through September.

Table 17: World: Rapeseed and Products Supply and Distribution

Million Metric Tons

	Area Harvested	Beginning Stocks	Production	Imports	Total Supply	Exports	Food Use Dom.	Domestic Consumpti	Ending Stocks
Oilseed, Rapeseed									
1997/98	23.50	2.04	33.12	4.30	39.46	4.26	0.36	34.13	1.07
1998/99	25.41	1.07	35.76	7.04	43.86	6.84	0.28	34.79	2.23
1999/00	26.75	2.23	42.48	8.20	52.92	8.21	0.39	40.46	4.25
2000/01	24.69	4.25	37.33	6.99	48.58	7.18	0.38	38.71	2.69
2001/02	23.29	2.69	36.01	4.95	43.65	4.90	0.44	35.98	2.78
2002/03	22.10	2.78	33.26	4.02	40.06	4.13	0.38	33.77	2.15
2003/04	25.47	2.15	39.44	5.14	46.73	5.53	0.62	39.12	2.09
2004/05	26.68	2.09	46.11	5.00	53.20	4.90	0.63	43.53	4.77
2005/06	27.27	4.77	48.54	6.66	59.96	6.98	0.30	47.48	5.50
2006/07	26.48	5.50	45.12	6.99	57.61	6.62	0.53	46.35	4.65
2007/08	28.29	4.65	48.56	7.54	60.75	8.15	0.46	49.11	3.49
2008/09	31.11	3.49	57.91	12.12	73.51	12.05	0.48	54.87	6.60
2009/10	31.11	6.60	60.62	10.73	77.95	10.82	0.53	59.70	7.43
2010/11	32.58	7.43	58.56	10.83	76.82	10.53	0.55	61.25	5.04
Meal, Rapeseed									
1997/98	nr	0.51	18.85	2.82	22.19	2.86	0.00	18.88	0.44
1998/99	nr	0.44	19.23	2.12	21.79	2.04	0.00	19.38	0.37
1999/00	nr	0.34	22.08	2.26	24.68	2.32	0.00	21.98	0.38
2000/01	nr	0.38	21.17	1.92	23.47	1.83	0.00	21.35	0.29
2001/02	nr	0.29	19.94	1.54	21.76	1.51	0.00	19.95	0.30
2002/03	nr	0.30	18.80	1.73	20.83	1.62	0.00	18.94	0.28
2003/04	nr	0.28	21.78	2.49	24.55	2.48	0.00	21.62	0.45
2004/05	nr	0.45	24.24	2.31	26.99	2.23	0.00	24.42	0.35
2005/06	nr	0.35	26.56	2.59	29.50	2.47	0.00	26.45	0.59
2006/07	nr	0.59	25.92	3.07	29.57	2.94	0.00	26.39	0.25
2007/08	nr	0.25	27.67	3.56	31.47	3.68	0.00	27.54	0.25
2008/09	nr	0.25	30.83	3.59	34.68	3.55	0.00	30.89	0.23
2009/10	nr	0.23	33.81	3.70	37.74	3.48	0.00	34.00	0.27
2010/11	nr	0.27	34.63	3.97	38.86	4.41	0.00	34.22	0.23
Oil, Rapeseed									
1997/98	nr	0.39	11.46	2.02	13.86	2.00	10.42	11.41	0.46
1998/99	nr	0.46	11.85	1.64	13.94	1.81	10.75	11.64	0.49
1999/00	nr	0.45	14.00	1.73	16.18	1.73	12.74	13.77	0.69
2000/01	nr	0.69	13.37	1.34	15.39	1.20	12.26	13.42	0.77
2001/02	nr	0.77	13.08	1.12	14.97	1.03	12.09	13.27	0.67
2002/03	nr	0.67	12.27	0.89	13.83	0.91	11.02	12.36	0.56
2003/04	nr	0.56	14.11	1.36	16.03	1.33	12.42	14.30	0.40
2004/05	nr	0.40	15.74	1.20	17.34	1.29	12.87	15.56	0.49
2005/06	nr	0.49	17.36	1.47	19.31	1.65	13.14	16.99	0.68
2006/07	nr	0.68	17.13	2.20	20.00	1.99	12.62	17.53	0.48
2007/08	nr	0.48	18.43	2.02	20.93	1.90	13.20	18.28	0.76
2008/09	nr	0.76	20.49	2.43	23.67	2.43	14.06	20.16	1.09
2009/10	nr	1.09	22.45	2.91	26.46	2.72	15.30	22.28	1.46
2010/11	nr	1.46	23.02	3.12	27.59	3.15	15.85	23.55	0.89

Based on the aggregate of different marketing years.

Table 18: World: Sunflower and Products Supply and Distribution

Million Metric Tons

	Area Harvested	Beginning Stocks	Production	Imports	Exports	Domestic Consumpti	Ending Stocks
Oilseed, Sunflowerseed							
1997/98	19.15	1.43	23.30	3.17	3.02	24.08	0.81
1998/99	21.46	0.81	26.65	3.76	3.69	26.17	1.35
1999/00	23.06	1.35	27.18	2.07	2.16	26.35	2.08
2000/01	19.92	2.08	23.08	2.23	2.52	23.31	1.56
2001/02	18.83	1.56	21.41	1.11	1.19	21.38	1.51
2002/03	20.21	1.51	23.91	1.37	1.52	23.28	1.99
2003/04	22.98	1.99	26.88	2.19	2.27	26.08	2.71
2004/05	20.87	2.71	25.28	1.13	1.23	25.66	2.24
2005/06	22.76	2.24	29.93	1.38	1.52	29.53	2.52
2006/07	23.36	2.52	29.74	1.76	1.90	29.30	2.81
2007/08	21.11	2.81	27.20	1.25	1.48	27.16	2.63
2008/09	23.68	2.63	33.27	1.82	2.14	32.74	2.84
2009/10	22.09	2.84	30.45	1.48	1.56	31.69	1.51
2010/11	22.35	1.51	30.93	1.28	1.48	30.53	1.71
Meal, Sunflowerseed							
1997/98	nr	0.28	9.81	2.32	2.40	9.64	0.36
1998/99	nr	0.36	10.54	2.57	2.85	10.23	0.39
1999/00	nr	0.39	10.57	2.54	2.34	10.75	0.40
2000/01	nr	0.40	9.32	2.23	2.00	9.63	0.32
2001/02	nr	0.32	8.34	1.91	2.11	8.22	0.24
2002/03	nr	0.24	8.99	2.20	2.32	8.95	0.17
2003/04	nr	0.17	10.22	2.66	2.86	9.97	0.21
2004/05	nr	0.21	9.96	2.55	2.77	9.77	0.18
2005/06	nr	0.18	11.49	3.30	3.55	11.15	0.26
2006/07	nr	0.26	11.48	3.32	3.49	11.36	0.21
2007/08	nr	0.21	10.60	2.79	3.28	10.04	0.28
2008/09	nr	0.28	12.79	3.88	4.30	12.04	0.61
2009/10	nr	0.61	12.51	3.51	4.16	11.99	0.48
2010/11	nr	0.48	12.14	3.80	4.19	11.82	0.42
Oil, Sunflowerseed							
1997/98	nr	0.76	8.48	2.68	3.06	8.21	0.64
1998/99	nr	0.64	9.27	2.95	3.14	8.83	0.89
1999/00	nr	0.85	9.28	2.46	2.90	8.76	0.93
2000/01	nr	0.93	8.18	2.01	2.24	8.18	0.70
2001/02	nr	0.70	7.44	1.76	1.92	7.50	0.48
2002/03	nr	0.48	8.12	2.00	2.28	7.82	0.50
2003/04	nr	0.50	9.19	1.95	2.68	8.39	0.58
2004/05	nr	0.58	9.14	2.16	2.57	8.50	0.80
2005/06	nr	0.80	10.64	3.30	3.91	9.86	0.99
2006/07	nr	0.99	10.70	3.33	4.04	10.23	0.75
2007/08	nr	0.75	10.03	2.74	3.49	9.04	0.98
2008/09	nr	0.98	11.99	3.98	4.56	10.72	1.67
2009/10	nr	1.67	11.63	3.84	4.67	11.14	1.32
2010/11	nr	1.32	11.28	3.83	4.36	11.06	1.01

Based on the aggregate of different marketing years, primarily September through August.

Table 19: World: Palm Oil, Coconut Oil, and Fish Meal Supply and Distribution

Million Metric Tons

	Beginning Stocks	Production	Imports	Total Supply	Exports	Industrial Dom.	Food Use Dom.	Domestic Consumpti	Ending Stocks
Oil, Palm									
1997/98	1.96	16.92	10.37	29.24	10.79	2.69	13.77	16.67	1.78
1998/99	1.78	19.20	12.01	32.99	12.38	2.81	14.84	17.87	2.74
1999/00	2.70	21.80	13.13	37.63	14.04	2.80	17.35	20.45	3.15
2000/01	3.15	24.31	16.28	43.73	16.51	3.49	20.03	24.02	3.20
2001/02	3.20	25.31	16.48	44.99	17.69	3.87	20.07	24.51	2.79
2002/03	2.79	27.68	19.67	50.15	20.04	4.73	21.79	27.12	2.99
2003/04	2.99	30.05	21.89	54.93	22.17	5.51	23.08	29.18	3.58
2004/05	3.58	33.50	24.27	61.34	25.12	6.79	24.89	32.34	3.89
2005/06	3.89	35.78	25.96	65.63	27.58	7.80	25.39	33.84	4.21
2006/07	4.21	37.33	26.43	67.97	27.60	8.50	26.79	35.98	4.38
2007/08	4.38	41.08	30.28	75.75	32.31	9.50	29.07	39.31	4.14
2008/09	4.14	43.99	33.66	81.80	34.80	10.35	30.80	41.97	5.03
2009/10	5.03	45.86	34.69	85.58	35.63	11.26	33.04	45.16	4.79
2010/11	4.79	47.47	36.76	89.02	37.53	12.19	34.98	48.09	3.40
Oil, Coconut									
1997/98	0.39	3.37	1.73	5.49	2.06	1.07	1.88	3.12	0.31
1998/99	0.31	2.72	1.21	4.24	1.11	1.00	1.75	2.91	0.22
1999/00	0.19	3.37	1.48	5.03	1.96	1.09	1.69	2.90	0.17
2000/01	0.17	3.59	1.77	5.53	1.83	1.19	2.05	3.38	0.33
2001/02	0.33	3.17	1.83	5.33	1.79	1.24	1.81	3.20	0.34
2002/03	0.34	3.14	1.89	5.37	1.73	1.23	1.83	3.18	0.46
2003/04	0.46	3.29	1.68	5.43	1.80	1.27	1.83	3.23	0.40
2004/05	0.40	3.46	1.91	5.76	2.08	1.37	1.79	3.25	0.43
2005/06	0.43	3.46	2.03	5.91	2.05	1.47	1.92	3.53	0.33
2006/07	0.33	3.22	1.87	5.42	1.74	1.47	1.77	3.32	0.36
2007/08	0.36	3.53	1.90	5.79	1.93	1.52	1.80	3.43	0.44
2008/09	0.44	3.53	1.65	5.62	1.48	1.59	1.76	3.39	0.75
2009/10	0.75	3.62	2.24	6.60	2.17	1.65	2.15	3.88	0.55
2010/11	0.55	3.68	2.02	6.24	1.88	1.72	2.12	3.89	0.48
Meal, Fish									
1997/98	0.65	4.97	2.27	7.89	2.26	0.09	0.00	4.97	0.66
1998/99	0.66	5.81	2.78	9.25	3.07	0.08	0.00	5.51	0.67
1999/00	0.67	6.33	3.70	10.69	3.66	0.08	0.00	6.39	0.65
2000/01	0.65	5.92	3.47	10.04	3.47	0.08	0.00	6.17	0.40
2001/02	0.40	5.83	3.25	9.48	3.06	0.08	0.00	5.73	0.69
2002/03	0.69	4.84	2.84	8.38	2.86	0.08	0.00	5.21	0.31
2003/04	0.31	5.34	3.12	8.77	3.21	0.07	0.00	5.38	0.18
2004/05	0.18	5.71	3.61	9.50	3.66	0.05	0.00	5.69	0.15
2005/06	0.15	4.96	2.95	8.06	2.73	0.05	0.00	5.18	0.15
2006/07	0.15	5.07	2.67	7.89	2.60	0.05	0.00	4.97	0.31
2007/08	0.31	5.24	3.03	8.58	2.84	0.05	0.00	5.40	0.34
2008/09	0.34	5.10	3.11	8.54	2.95	0.05	0.00	5.36	0.23
2009/10	0.23	4.31	2.62	7.17	2.26	0.05	0.00	4.71	0.20
2010/11	0.20	4.97	3.02	8.20	2.87	0.05	0.00	5.16	0.17

Based on the aggregate of different marketing years.

Table 20: United States Oilseeds and Products Supply and Distribution Local Marketing Year

Thousand Metric Tons

	Area Harvested	Beginning Stocks	Production	Imports	Total Supply	Exports	Crush	Domestic Consumpti	Ending Stocks
Major Oilseeds									
1997/98	35,351	4,654	83,095	672	88,421	24,555	48,887	57,421	6,445
1998/99	35,275	6,445	84,364	698	91,507	22,722	47,813	58,005	10,780
1999/00	37,149	10,780	82,315	759	93,854	27,395	47,905	57,474	8,985
2000/01	36,805	8,985	84,891	817	94,693	27,976	49,189	58,897	7,820
2001/02	37,323	7,820	89,832	653	98,305	29,966	50,631	61,466	6,873
2002/03	36,284	6,873	83,935	550	91,358	29,433	47,505	56,090	5,835
2003/04	36,041	5,835	76,604	503	82,942	25,158	45,539	53,632	4,152
2004/05	36,808	4,152	95,944	681	100,777	30,708	50,167	61,780	8,289
2005/06	36,587	8,289	95,670	664	104,623	26,611	51,897	63,811	14,201
2006/07	36,962	14,201	96,843	1,033	112,077	31,647	53,483	63,407	17,023
2007/08	31,970	17,023	82,453	1,265	100,741	33,045	53,495	60,787	6,909
2008/09	35,265	6,909	89,201	1,295	97,405	35,694	49,343	56,092	5,619
2009/10	35,512	5,619	98,902	1,066	105,587	41,770	51,453	58,272	5,545
2010/11	37,185	5,545	100,466	950	106,961	43,975	49,349	57,810	5,176
Major Protien Meals									
1997/98	nr	229	37,455	1,355	39,039	8,957	48,887	29,783	299
1998/99	nr	299	36,764	1,221	38,284	7,223	47,813	30,728	333
1999/00	nr	333	36,713	1,242	38,288	7,131	47,905	30,860	297
2000/01	nr	297	38,238	1,162	39,697	7,607	49,189	31,693	397
2001/02	nr	397	38,890	1,060	40,347	7,524	50,631	32,537	286
2002/03	nr	286	36,585	1,194	38,065	5,924	47,505	31,895	246
2003/04	nr	246	35,200	1,836	37,282	4,945	45,539	32,064	273
2004/05	nr	273	39,246	1,529	41,048	6,954	50,167	33,879	215
2005/06	nr	215	39,910	1,653	41,778	7,608	51,897	33,809	361
2006/07	nr	361	41,449	1,699	43,509	8,264	53,483	34,860	385
2007/08	nr	385	40,873	1,980	43,238	8,706	53,495	34,199	333
2008/09	nr	333	37,717	1,809	39,859	7,940	49,343	31,673	246
2009/10	nr	246	40,050	1,344	41,640	10,317	51,453	30,983	340
2010/11	nr	340	38,420	1,868	40,628	8,559	49,349	31,739	330
Major Vegetable Oils									
1997/98	0	942	9,558	1,644	12,144	2,043	48,887	9,118	983
1998/99	0	983	9,431	1,410	11,824	1,635	47,813	9,191	998
1999/00	0	998	9,413	1,522	11,933	1,126	47,905	9,592	1,215
2000/01	0	1,215	9,554	1,683	12,452	1,047	49,189	9,766	1,639
2001/02	0	1,639	9,681	1,627	12,947	1,549	50,631	10,093	1,305
2002/03	0	1,305	9,197	1,543	12,045	1,238	47,505	9,885	922
2003/04	0	922	8,779	1,911	11,612	740	45,539	10,077	795
2004/05	0	795	9,769	1,841	12,405	838	50,167	10,443	1,124
2005/06	0	1,124	10,423	2,379	13,926	899	51,897	11,230	1,797
2006/07	0	1,797	10,455	2,527	14,779	1,333	53,483	11,705	1,741
2007/08	0	1,741	10,545	3,109	15,395	1,679	53,495	12,252	1,464
2008/09	0	1,464	9,667	3,230	14,361	1,457	49,343	11,167	1,737
2009/10	0	1,737	10,051	3,337	15,125	1,949	51,453	11,222	1,954
2010/11	0	1,954	9,893	3,326	15,173	1,927	49,349	11,761	1,485

Based on the aggregate of different marketing years

Table 21: United States Soybeans and Products Supply and Distribution Local Marketing Years

Thousand Metric Tons

	Area Harvested	Beginning Stocks	Production	Imports	Total Supply	Exports	Crush	Domestic Consumpti	Ending Stocks
Oilseed, Soybean									
1997/98	27,968	3,588	73,176	136	76,900	23,796	43,464	47,666	5,438
1998/99	28,507	5,438	74,598	96	80,132	21,899	43,262	48,749	9,484
1999/00	29,318	9,484	72,224	114	81,822	26,537	42,927	47,388	7,897
2000/01	29,303	7,897	75,055	97	83,049	27,103	44,625	49,203	6,743
2001/02	29,532	6,743	78,672	63	85,478	28,948	46,259	50,867	5,663
2002/03	29,339	5,663	75,010	127	80,800	28,423	43,948	47,524	4,853
2003/04	29,330	4,853	66,783	151	71,787	24,128	41,632	44,600	3,059
2004/05	29,930	3,059	85,019	152	88,230	29,860	46,160	51,410	6,960
2005/06	28,834	6,960	83,507	92	90,559	25,579	47,324	52,751	12,229
2006/07	30,190	12,229	87,001	246	99,476	30,386	49,198	53,473	15,617
2007/08	25,959	15,617	72,859	269	88,745	31,538	49,081	51,627	5,580
2008/09	30,222	5,580	80,749	361	86,690	34,817	45,230	48,112	3,761
2009/10	30,907	3,761	91,417	397	95,575	40,852	47,669	50,617	4,106
2010/11	31,006	4,106	90,610	408	95,124	43,001	44,906	48,313	3,810
Meal, Soybean									
1997/98	nr	191	34,633	60	34,884	8,722	43,464	25,964	198
1998/99	nr	198	34,285	101	34,584	6,979	43,262	27,305	300
1999/00	nr	300	34,102	65	34,467	6,912	42,927	27,289	266
2000/01	nr	266	35,730	50	36,046	7,335	44,625	28,363	348
2001/02	nr	348	36,552	134	37,034	7,271	46,259	29,545	218
2002/03	nr	218	34,649	157	35,024	5,728	43,948	29,096	200
2003/04	nr	200	32,953	259	33,412	4,690	41,632	28,531	191
2004/05	nr	191	36,936	134	37,261	6,659	46,160	30,446	156
2005/06	nr	156	37,416	128	37,700	7,301	47,324	30,114	285
2006/07	nr	285	39,037	142	39,464	7,987	49,198	31,166	311
2007/08	nr	311	38,359	128	38,798	8,384	49,081	30,148	266
2008/09	nr	266	35,473	80	35,819	7,708	45,230	27,898	213
2009/10	nr	213	37,830	145	38,188	10,137	47,669	27,777	274
2010/11	nr	274	35,910	149	36,333	8,392	44,906	27,669	272
Oil, Soybean									
1997/98	nr	690	8,229	27	8,946	1,397	43,464	6,922	627
1998/99	nr	627	8,202	38	8,867	1,076	43,262	7,101	690
1999/00	nr	690	8,085	37	8,812	624	42,927	7,284	904
2000/01	nr	904	8,355	33	9,292	636	44,625	7,401	1,255
2001/02	nr	1,255	8,572	21	9,848	1,143	46,259	7,635	1,070
2002/03	nr	1,070	8,360	21	9,451	1,027	43,948	7,748	676
2003/04	nr	676	7,748	139	8,563	425	41,632	7,650	488
2004/05	nr	488	8,782	12	9,282	600	46,160	7,911	771
2005/06	nr	771	9,248	16	10,035	523	47,324	8,147	1,365
2006/07	nr	1,365	9,294	17	10,676	851	49,198	8,426	1,399
2007/08	nr	1,399	9,335	30	10,764	1,320	49,081	8,317	1,127
2008/09	nr	1,127	8,503	41	9,671	995	45,230	7,378	1,298
2009/10	nr	1,298	8,897	46	10,241	1,523	47,669	7,195	1,523
2010/11	nr	1,523	8,630	79	10,232	1,406	44,906	7,756	1,070

Data based on Local Marketing Year (MY). Soybeans are on a September/August MY, and Soybean Meal and Oil are on an October/September MY.

Table 22: Brazil Soybeans and Products Supply and Distribution Local Marketing Years

Thousand Metric Tons

	Area Harvested	Beginning Stocks	Production	Imports	Total Supply	Exports	Crush	Domestic Consumpti	Ending Stocks
Oilseed, Soybean (Local)									
1997/98	13,000	599	32,500	634	33,733	9,325	21,832	23,586	822
1998/99	12,900	822	31,300	616	32,738	8,912	21,645	23,423	403
1999/00	13,600	403	34,700	794	35,897	11,779	21,578	23,502	616
2000/01	13,934	616	39,500	854	40,970	15,521	22,773	24,992	457
2001/02	16,350	457	43,500	1,100	45,057	16,074	25,843	28,302	681
2002/03	18,448	681	52,000	1,124	53,805	19,987	27,796	30,520	3,298
2003/04	21,520	3,298	51,000	364	54,662	19,257	28,914	31,807	3,598
2004/05	22,917	3,598	53,000	352	56,950	22,799	29,730	32,515	1,636
2005/06	22,229	1,636	57,000	40	58,676	24,770	28,754	31,654	2,252
2006/07	20,700	2,252	59,000	108	61,360	23,805	31,511	34,445	3,110
2007/08	21,300	3,110	61,000	83	64,193	24,515	31,895	34,860	4,818
2008/09	21,700	4,818	57,800	124	62,742	28,041	30,778	33,545	1,156
2009/10	23,500	1,156	69,000	150	70,306	29,190	35,500	38,450	2,666
2010/11	24,250	2,666	72,000	175	74,841	33,100	35,450	38,650	3,091
Meal, Soybean (Local)									
1997/98	nr	425	17,235	157	17,817	10,861	21,832	6,435	521
1998/99	nr	521	17,000	75	17,596	10,132	21,645	6,870	594
1999/00	nr	594	16,831	119	17,544	9,876	21,578	7,068	600
2000/01	nr	600	17,753	230	18,583	11,110	22,773	7,171	302
2001/02	nr	302	20,392	388	21,082	12,783	25,843	7,596	703
2002/03	nr	703	21,773	337	22,813	13,542	27,796	8,292	979
2003/04	nr	979	22,330	227	23,536	14,596	28,914	8,099	841
2004/05	nr	841	23,040	244	24,125	14,256	29,730	9,133	736
2005/06	nr	736	22,280	214	23,230	12,287	28,754	10,080	863
2006/07	nr	863	24,420	146	25,429	12,346	31,511	11,520	1,563
2007/08	nr	1,563	24,720	143	26,426	12,709	31,895	12,000	1,717
2008/09	nr	1,717	23,850	86	25,653	12,153	30,778	12,200	1,300
2009/10	nr	1,300	27,510	85	28,895	14,140	35,500	12,950	1,805
2010/11	nr	1,805	27,470	90	29,365	13,450	35,450	13,695	2,220
Oil, Soybean (Local)									
1997/98	nr	154	4,083	197	4,434	1,413	21,832	2,795	226
1998/99	nr	226	4,048	243	4,517	1,519	21,645	2,762	236
1999/00	nr	236	4,036	111	4,383	1,134	21,578	2,971	278
2000/01	nr	278	4,370	87	4,735	1,616	22,773	2,937	182
2001/02	nr	182	4,905	140	5,227	2,100	25,843	2,936	191
2002/03	nr	191	5,349	47	5,587	2,405	27,796	2,897	285
2003/04	nr	285	5,579	14	5,878	2,531	28,914	2,969	378
2004/05	nr	378	5,710	3	6,091	2,697	29,730	3,099	295
2005/06	nr	295	5,520	18	5,833	2,315	28,754	3,211	307
2006/07	nr	307	6,050	62	6,419	2,521	31,511	3,505	393
2007/08	nr	393	6,120	9	6,522	2,198	31,895	4,005	319
2008/09	nr	319	5,910	41	6,270	1,496	30,778	4,370	404
2009/10	nr	404	6,810	2	7,216	1,632	35,500	5,075	509
2010/11	nr	509	6,800	16	7,325	1,675	35,450	5,300	350

Data based on Brazil's local February/January Marketing Year (MY).
Where February 2006 - January 2007 is the 2005/06 MY.

Table 23: Argentina Soybeans and Products Supply and Distribution Local Marketing Years

Thousand Metric Tons

	Area Harvested	Beginning Stocks	Production	Imports	Total Supply	Exports	Crush	Domestic Consumpti	Ending Stocks
Oilseed, Soybean (Local)									
1997/98	6,954	1,617	19,500	289	21,406	2,855	16,742	17,499	1,052
1998/99	8,165	1,052	20,000	251	21,303	3,097	17,108	17,933	273
1999/00	8,583	273	21,200	301	21,774	4,109	16,514	17,449	216
2000/01	10,400	216	27,800	291	28,307	7,377	19,507	20,587	343
2001/02	11,400	343	30,000	297	30,640	6,221	22,397	23,597	822
2002/03	12,600	822	35,500	377	36,699	8,809	24,815	26,140	1,750
2003/04	14,000	1,750	33,000	719	35,469	6,799	25,072	26,509	2,161
2004/05	14,400	2,161	39,000	709	41,870	10,686	29,560	31,010	174
2005/06	15,200	174	40,500	1,013	41,687	7,130	32,748	34,223	334
2006/07	16,300	334	48,800	2,336	51,470	12,133	35,963	37,463	1,874
2007/08	16,371	1,874	46,200	2,947	51,021	11,803	31,883	33,454	5,764
2008/09	16,000	5,764	32,000	157	37,921	3,486	28,555	30,140	4,295
2009/10	18,600	4,295	54,500	0	58,795	13,640	37,243	38,840	6,315
2010/11	18,600	6,315	49,500	0	55,815	11,775	38,230	39,855	4,185
Meal, Soybean (Local)									
1997/98	nr	1,890	13,440	0	15,330	12,689	16,742	343	2,298
1998/99	nr	2,298	13,438	0	15,736	12,761	17,108	342	2,633
1999/00	nr	2,633	13,113	0	15,746	12,854	16,514	350	2,542
2000/01	nr	2,542	15,492	0	18,034	15,979	19,507	374	1,681
2001/02	nr	1,681	17,762	0	19,443	17,572	22,397	423	1,448
2002/03	nr	1,448	19,667	0	21,115	19,162	24,815	500	1,453
2003/04	nr	1,453	19,741	2	21,196	19,078	25,072	530	1,588
2004/05	nr	1,588	23,350	1	24,939	22,703	29,560	550	1,686
2005/06	nr	1,686	25,582	0	27,268	24,723	32,748	574	1,971
2006/07	nr	1,971	27,857	2	29,830	28,108	35,963	625	1,097
2007/08	nr	1,097	24,839	3	25,939	24,389	31,883	632	918
2008/09	nr	918	22,519	4	23,441	21,303	28,555	652	1,486
2009/10	nr	1,486	28,912	0	30,398	27,670	37,243	698	2,030
2010/11	nr	2,030	29,533	0	31,563	28,900	38,230	717	1,946
Oil, Soybean (Local)									
1997/98	nr	445	2,953	0	3,398	2,544	16,742	217	637
1998/99	nr	637	3,118	0	3,755	3,085	17,108	230	440
1999/00	nr	440	3,017	0	3,457	2,837	16,514	242	378
2000/01	nr	378	3,630	0	4,008	3,510	19,507	287	211
2001/02	nr	211	4,165	0	4,376	3,639	22,397	357	380
2002/03	nr	380	4,672	0	5,052	4,245	24,815	389	418
2003/04	nr	418	4,724	0	5,142	4,446	25,072	392	304
2004/05	nr	304	5,558	0	5,862	5,082	29,560	395	385
2005/06	nr	385	6,169	0	6,554	5,667	32,748	402	485
2006/07	nr	485	6,917	0	7,402	6,515	35,963	675	212
2007/08	nr	212	6,037	0	6,249	4,987	31,883	1,125	137
2008/09	nr	137	5,448	0	5,585	3,707	28,555	1,721	157
2009/10	nr	157	7,073	0	7,230	4,960	37,243	2,127	143
2010/11	nr	143	7,266	0	7,409	4,920	38,230	2,285	204

Data based on Argentina's Local April/March Marketing Year (MY).
Where April 2006 - March 2007 is the 2005/06 MY.

Table 24: South East Asia: Oilseeds and Products Supply and Distribution

Thousand Metric Tons

	2006/07	2007/08	2008/09	2009/10	Mar 2010/11	Apr 2010/11
Production						
Oilseed, Copra	3,988	4,347	4,466	4,465	4,545	4,480
Oilseed, Palm Kernel	8,639	9,544	10,241	10,685	11,191	11,191
Oilseed, Soybean	1,470	1,457	1,440	1,361	1,411	1,391
Other	3,386	3,375	3,503	3,520	3,519	3,519
Total	17,483	18,723	19,650	20,031	20,666	20,581
Imports						
Meal, Fish	112	117	129	103	132	132
Meal, Rapeseed	380	428	488	383	460	385
Meal, Soybean	9,078	8,817	9,276	9,955	10,495	10,520
Other	467	334	476	421	475	447
Total	10,037	9,696	10,369	10,862	11,562	11,484
Imports						
Oil, Palm	1,432	1,813	2,275	2,569	2,933	2,975
Oil, Rapeseed	0	1	1	1	0	1
Oil, Soybean	249	270	242	305	372	327
Oil, Sunflowerseed	0	0	0	0	0	0
Other	486	596	520	658	696	696
Total	2,167	2,680	3,038	3,533	4,001	3,999
Domestic Consumption						
Meal, Fish	522	541	609	526	558	558
Meal, Rapeseed	380	428	488	383	460	385
Meal, Soybean	10,501	10,422	10,628	11,487	12,157	12,226
Other	2,163	2,128	2,421	2,387	2,612	2,529
Total	13,566	13,519	14,146	14,783	15,787	15,698
Domestic Consumption						
Oil, Palm	9,256	9,793	10,328	11,291	12,423	12,307
Oil, Rapeseed	0	1	1	1	0	1
Oil, Soybean	441	466	465	529	564	579
Oil, Sunflowerseed	78	78	78	78	78	78
Other	3,366	3,593	3,868	3,951	4,165	4,114
Total	13,141	13,931	14,740	15,850	17,230	17,079
Industrial Dom. Cons.						
Oil, Palm	3,025	3,446	3,954	4,407	4,995	4,970
Oil, Rapeseed	0	0	0	0	0	0
Oil, Soybean	71	73	74	75	77	77
Oil, Sunflowerseed	0	0	0	0	0	0
Other	2,366	2,573	2,784	2,777	2,892	2,892
Total	5,462	6,092	6,812	7,259	7,964	7,939
Food Use Dom. Cons.						
Oil, Palm	5,824	5,907	5,905	6,395	6,838	6,807
Oil, Rapeseed	0	1	1	1	0	1
Oil, Soybean	370	393	391	454	487	502
Oil, Sunflowerseed	78	78	78	78	78	78
Other	995	1,014	1,076	1,164	1,261	1,210
Total	7,267	7,393	7,451	8,092	8,664	8,598
SME						
Meal, Fish	754	782	880	760	806	806
Meal, Rapeseed	270	305	347	273	327	274
Meal, Soybean	10,501	10,422	10,628	11,487	12,157	12,226
Other	1,142	1,093	1,215	1,189	1,352	1,261
Total	12,667	12,601	13,071	13,709	14,643	14,567

Southeast Asia includes Brunei, Burma, Cambodia, Indonesia, Laos, Malaysia, Philippines, Singapore, Thailand, and Vietnam.

SME - 44 Percent Protein Soybean Meal Equivalent

Table 25: Middle East Oilseeds and Products Supply and Distribution

Thousand Metric Tons

	2006/07	2007/08	2008/09	2009/10	Mar 2010/11	Apr 2010/11
Production						
Oilseed, Cottonseed	1,877	1,684	1,277	1,143	1,304	1,224
Oilseed, Rapeseed	0	0	0	0	0	0
Oilseed, Soybean	213	206	229	249	332	272
Oilseed, Sunflowerseed	910	758	888	861	936	1,061
Other	77	85	85	90	85	85
Total	3,077	2,733	2,479	2,343	2,657	2,642
Imports						
Meal, Fish	54	62	53	53	56	56
Meal, Rapeseed	21	54	58	24	45	31
Meal, Soybean	2,623	2,928	3,578	3,687	4,350	4,085
Other	787	528	709	844	884	917
Total	3,485	3,572	4,398	4,608	5,335	5,089
Imports						
Oil, Palm	1,883	2,335	2,025	2,259	2,390	2,545
Oil, Rapeseed	4	13	4	4	6	4
Oil, Soybean	791	697	529	453	536	593
Oil, Sunflowerseed	365	554	917	582	600	515
Other	36	44	58	63	51	51
Total	3,079	3,643	3,533	3,361	3,583	3,708
Domestic Consumption						
Meal, Fish	59	65	56	54	59	59
Meal, Rapeseed	139	321	302	282	303	326
Meal, Soybean	4,605	5,078	5,383	5,867	6,877	6,280
Other	2,066	1,698	1,694	1,872	1,955	1,958
Total	6,869	7,162	7,435	8,075	9,194	8,623
Domestic Consumption						
Oil, Palm	1,592	1,789	1,828	1,905	2,061	2,036
Oil, Rapeseed	65	130	127	118	106	126
Oil, Soybean	1,272	1,095	935	921	1,046	976
Oil, Sunflowerseed	995	1,003	1,223	1,174	1,157	1,107
Other	534	492	507	502	534	520
Total	4,458	4,509	4,620	4,620	4,904	4,765
Industrial Dom. Cons.						
Oil, Palm	160	146	145	155	168	168
Oil, Rapeseed	28	35	33	33	35	35
Oil, Soybean	137	66	60	63	66	56
Oil, Sunflowerseed	22	22	22	22	22	22
Other	58	50	42	54	46	46
Total	405	319	302	327	337	327
Food Use Dom. Cons.						
Oil, Palm	1,432	1,643	1,683	1,750	1,893	1,868
Oil, Rapeseed	37	95	94	85	71	91
Oil, Soybean	1,113	1,009	855	837	958	898
Oil, Sunflowerseed	953	959	1,179	1,131	1,115	1,065
Other	476	442	465	448	488	474
Total	4,011	4,148	4,276	4,251	4,525	4,396
SME						
Meal, Fish	85	94	81	78	85	85
Meal, Rapeseed	99	228	215	201	216	232
Meal, Soybean	4,605	5,078	5,383	5,867	6,877	6,280
Other	1,830	1,499	1,517	1,694	1,763	1,770
Total	6,619	6,899	7,195	7,839	8,941	8,368

Middle East includes Bahrain, Gaza Strip, Iran, Iraq, Israel, Jordan, Kuwait, Lebanon, Oman, Qatar, Saudi Arabia, Syria, Turkey, United Arab Emirates, West Banks, and Yemen.

SME - 44 Percent Protein Soybean Meal Equivalent

Table 26: European Union (27): Oilseeds and Products Supply and Distribution

Thousand Metric Tons

	2006/07	2007/08	2008/09	2009/10	Mar 2010/11	Apr 2010/11
Production						
Oilseed, Rapeseed	16,092	18,358	19,000	21,566	20,300	20,300
Oilseed, Soybean	1,228	723	639	835	1,025	1,025
Oilseed, Sunflowerseed	6,502	4,799	7,130	6,940	6,950	6,950
Other	678	643	475	462	470	470
Total	24,500	24,523	27,244	29,803	28,745	28,745
Imports						
Meal, Fish	517	506	564	427	500	500
Meal, Rapeseed	106	109	171	134	170	170
Meal, Soybean	22,213	24,074	20,980	20,730	23,250	23,250
Other	4,167	3,880	5,010	4,003	4,352	4,371
Total	27,003	28,569	26,725	25,294	28,272	28,291
Imports						
Oil, Palm	4,332	4,960	5,504	5,396	5,200	5,200
Oil, Rapeseed	727	296	454	441	500	500
Oil, Soybean	991	1,040	793	543	950	950
Oil, Sunflowerseed	1,205	1,184	1,030	936	900	900
Other	1,765	1,551	1,460	1,503	1,483	1,483
Total	9,020	9,031	9,241	8,819	9,033	9,033
Domestic Consumption						
Meal, Fish	858	845	820	755	800	800
Meal, Rapeseed	9,100	10,413	11,759	12,922	12,770	12,745
Meal, Soybean	33,228	35,169	31,579	30,138	33,256	33,256
Other	7,233	6,495	8,065	7,709	7,698	7,717
Total	50,419	52,922	52,223	51,524	54,524	54,518
Domestic Consumption						
Oil, Palm	4,218	4,717	5,039	5,347	5,188	5,185
Oil, Rapeseed	7,198	7,574	8,679	9,615	10,025	10,025
Oil, Soybean	3,368	3,377	2,779	2,400	2,916	2,916
Oil, Sunflowerseed	3,323	2,976	3,245	3,402	3,375	3,375
Other	3,595	3,619	3,475	3,467	3,581	3,581
Total	21,702	22,263	23,217	24,231	25,085	25,082
Industrial Dom. Cons.						
Oil, Palm	1,362	1,777	1,811	1,970	1,900	2,000
Oil, Rapeseed	4,768	4,919	5,931	6,810	7,370	7,370
Oil, Soybean	1,563	1,592	1,085	1,010	1,400	1,400
Oil, Sunflowerseed	170	270	350	350	350	350
Other	517	552	460	444	503	503
Total	8,380	9,110	9,637	10,584	11,523	11,623
Food Use Dom. Cons.						
Oil, Palm	2,656	2,720	2,968	3,100	2,988	2,885
Oil, Rapeseed	2,425	2,650	2,743	2,800	2,650	2,650
Oil, Soybean	1,675	1,655	1,564	1,260	1,386	1,386
Oil, Sunflowerseed	3,150	2,704	2,893	3,050	3,022	3,022
Other	3,042	3,041	2,989	2,997	3,052	3,052
Total	12,948	12,770	13,157	13,207	13,098	12,995
SME						
Meal, Fish	1,240	1,221	1,185	1,091	1,156	1,156
Meal, Rapeseed	6,475	7,409	8,367	9,194	9,086	9,068
Meal, Soybean	33,228	35,169	31,579	30,138	33,256	33,256
Other	5,447	4,745	6,124	6,114	5,901	5,923
Total	46,390	48,544	47,255	46,537	49,399	49,403

EU-27 includes Austria, Belgium, Bulgaria, Cyprus, Czech Republic, Denmark, Estonia, Finland, France, Germany, Greece, Hungary, Ireland, Italy, Latvia, Lithuania, Luxembourg, Malta, Netherlands, Poland, Portugal, Romania, Slovakia, Slovenia, Spain, Sweden, and United Kingdom.

Table 27: China Oilseeds and Products Supply and Distribution

Thousand Metric Tons

	2006/07	2007/08	2008/09	2009/10	Mar 2010/11	Apr 2010/11
Production						
Oilseed, Peanut	12,887	13,027	14,286	14,708	15,100	15,100
Oilseed, Rapeseed	10,966	10,573	12,100	13,657	12,800	12,800
Oilseed, Soybean	15,074	13,400	15,540	14,980	15,200	15,200
Oilseed, Sunflowerseed	1,500	1,250	1,790	1,956	1,900	1,900
Other	13,910	14,500	14,400	12,540	11,560	11,560
Total	54,337	52,750	58,116	57,841	56,560	56,560
Imports						
Meal, Fish	970	1,351	1,311	1,042	1,300	1,300
Meal, Rapeseed	328	302	260	993	600	700
Meal, Soybean	32	203	215	83	250	250
Other	51	101	24	40	13	13
Total	1,381	1,957	1,810	2,158	2,163	2,263
Imports						
Oil, Palm	5,139	5,223	6,118	5,760	6,250	6,250
Oil, Peanut	11	6	20	47	30	45
Oil, Rapeseed	330	277	453	785	700	750
Oil, Soybean	2,404	2,727	2,494	1,514	2,000	2,000
Oil, Sunflowerseed	94	2	125	169	130	130
Other	524	523	563	726	800	800
Total	8,502	8,758	9,773	9,001	9,910	9,975
Domestic Consumption						
Meal, Fish	1,258	1,646	1,618	1,258	1,515	1,515
Meal, Rapeseed	7,479	7,069	8,317	10,022	9,762	9,788
Meal, Soybean	27,630	30,849	31,673	37,546	44,828	44,861
Other	7,584	7,694	7,952	7,606	7,283	7,283
Total	43,951	47,258	49,560	56,432	63,388	63,447
Domestic Consumption						
Oil, Palm	5,138	5,222	5,618	5,930	6,277	6,277
Oil, Peanut	2,007	2,016	2,184	2,227	2,270	2,285
Oil, Rapeseed	4,343	4,139	4,853	5,641	6,100	6,100
Oil, Soybean	8,670	9,693	9,486	10,435	12,198	12,148
Oil, Sunflowerseed	329	129	439	493	436	436
Other	2,072	2,144	2,158	2,188	2,149	2,149
Total	22,559	23,343	24,738	26,914	29,430	29,395
Food Use Dom. Cons.						
Oil, Palm	3,188	3,222	3,568	3,880	4,117	4,117
Oil, Peanut	2,007	2,016	2,184	2,227	2,270	2,285
Oil, Rapeseed	4,343	4,139	4,853	5,641	6,100	6,100
Oil, Soybean	8,670	9,693	9,486	10,435	12,198	12,148
Oil, Sunflowerseed	329	129	439	493	436	436
Other	1,681	1,775	1,707	1,750	1,649	1,649
Total	20,218	20,974	22,237	24,426	26,770	26,735
SME						
Meal, Fish	1,818	2,378	2,338	1,818	2,189	2,189
Meal, Rapeseed	5,321	5,030	5,918	7,131	6,946	6,964
Meal, Soybean	27,630	30,849	31,673	37,546	44,828	44,861
Other	7,007	7,100	7,382	7,115	6,863	6,863
Total	41,776	45,357	47,310	53,610	60,826	60,877

SME - 44 Percent Protein Soybean Meal Equivalent

Table 28: India Oilseeds and Products Supply and Distribution

Thousand Metric Tons

	2006/07	2007/08	2008/09	2009/10	Mar 2010/11	Apr 2010/11
Production						
Oilseed, Cottonseed	9,128	10,400	9,600	9,800	10,600	10,600
Oilseed, Peanut	5,385	6,800	6,250	4,900	6,000	6,000
Oilseed, Rapeseed	5,800	5,450	6,700	6,400	7,000	7,000
Oilseed, Soybean	7,690	9,470	9,100	9,000	9,600	9,600
Oilseed, Sunflowerseed	1,280	1,120	1,000	820	700	500
Other	633	713	749	749	749	749
Total	29,916	33,953	33,399	31,669	34,649	34,449
Imports						
Oil, Cottonseed	0	0	5	9	0	0
Oil, Palm	3,650	5,013	6,867	6,603	7,200	7,200
Oil, Peanut	0	0	0	0	0	0
Oil, Rapeseed	0	0	42	18	10	0
Oil, Soybean	1,447	733	1,060	1,598	1,000	1,000
Oil, Sunflowerseed	203	18	583	611	720	720
Other	140	143	231	232	240	240
Total	5,440	5,907	8,788	9,071	9,170	9,160
Domestic Consumption						
Meal, Cottonseed	3,084	3,473	3,373	3,424	3,745	3,745
Meal, Peanut	1,468	1,843	1,777	1,326	1,695	1,640
Meal, Rapeseed	2,700	1,970	2,475	2,700	2,665	2,715
Meal, Soybean	1,020	1,450	1,950	2,490	2,795	2,795
Meal, Sunflowerseed	558	481	424	349	284	190
Other	257	274	310	339	332	332
Total	9,087	9,491	10,309	10,628	11,516	11,417
Domestic Consumption						
Oil, Cottonseed	947	1,054	1,038	1,060	1,141	1,141
Oil, Palm	3,671	5,063	6,275	6,753	7,750	7,750
Oil, Peanut	1,433	1,582	1,455	1,320	1,427	1,395
Oil, Rapeseed	2,133	1,967	2,099	2,247	2,274	2,265
Oil, Soybean	2,500	2,330	2,300	2,810	2,700	2,700
Oil, Sunflowerseed	600	398	731	910	930	900
Other	523	574	665	688	690	690
Total	11,807	12,968	14,563	15,788	16,912	16,841
Food Use Dom. Cons.						
Oil, Cottonseed	915	1,021	1,000	1,021	1,100	1,100
Oil, Palm	3,275	4,583	5,750	6,170	7,125	7,125
Oil, Peanut	1,420	1,567	1,440	1,305	1,412	1,380
Oil, Rapeseed	2,133	1,967	2,099	2,247	2,274	2,265
Oil, Soybean	2,500	2,330	2,300	2,810	2,700	2,700
Oil, Sunflowerseed	600	398	731	910	930	900
Other	214	248	335	346	340	340
Total	11,057	12,114	13,655	14,809	15,881	15,810
SME						
Meal, Cottonseed	2,499	2,814	2,733	2,774	3,035	3,035
Meal, Peanut	1,650	2,072	1,997	1,490	1,905	1,843
Meal, Rapeseed	1,921	1,402	1,761	1,921	1,896	1,932
Meal, Soybean	1,020	1,450	1,950	2,490	2,795	2,795
Meal, Sunflowerseed	527	454	400	330	268	179
Other	115	123	139	151	147	147
Total	7,732	8,315	8,981	9,156	10,046	9,931

SME - 44 Percent Protein Soybean Meal Equivalent

Table 29: Oilseed Prices
U.S. Dollars per Metric Ton

Year Beg Oct 1	Soybean					Peanut		Sunseed		Rapeseed	Copra
	U.S. 1/	U.S. 2/	Brz 3/	Arg 4/	Rott 5/	U.S. 6/	Rott 7/	U.S. 8/	Rott 9/	Hamb 10/	Rott 11/
Oct - Sep Average											
99/00-08/09	247	254	265	263	304	451	1014	303	344	318	423
1999/00	173	175	183	180	208	544	820	168	214	190	357
2000/01	167	169	180	175	200	582	888	167	219	202	208
2001/02	170	174	183	179	203	389	700	238	287	220	245
2002/03	209	232	217	221	267	415	963	265	286	285	287
2003/04	291	294	277	285	323	425	976	282	321	317	424
2004/05	217	214	232	228	277	402	915	316	313	262	431
2005/06	205	202	228	227	261	383	857	261	291	292	387
2006/07	254	264	279	279	335	394	1,128	343	401	375	537
2007/08	414	452	472	469	550	458	1,688	532	745	644	867
2008/09	368	365	403	392	421	517	1,204	461	364	393	487
2009/10											
Oct	347	348	418	422	427	525	1,160	357	373	390	470
Nov	350	364	391	439	440	481	1,160	311	406	402	493
Dec	360	373	399	446	450	474	1,196	324	448	415	509
Jan	360	351	379	391	437	454	1,213	346	434	408	524
Feb	346	338	359	347	406	463	1,250	370	444	398	538
Mar	345	341	357	353	408	454	1,240	348	463	407	608
Apr	348	351	366	364	411	448	1,180	353	479	418	628
May	346	342	359	359	407	454	1,214	328	485	378	624
Jun	347	347	368	365	408	476	1,225	331	423	388	651
Jul	360	370	406	399	429	474	1,225	340	443	443	689
Aug	371	383	426	423	457	456	1,225	315	491	479	772
Sep	367	381	456	436	470	441	1,225	381	534	505	847
Average	354	357	390	395	429	467	1,209	342	452	419	613
2010/11											
Oct	375	411	471	468	493	472	1,395	459	634	540	947
Nov	408	452	486	492	526	492	1,495	421	693	583	1,013
Dec	426	472	501	513	547	529	1,520	454	689	656	1,154
Jan	426	499	529	544	572	505	1,580	483	716	693	1,354
Feb	467	499	526	532	570	507	1,580	604	714	666	1,503
*Mar	445	488	506	512	553	516	1,646	622	684	663	1,280
Apr											
May											
Jun											
Jul											
Aug											
Sep											
Average	425	470	503	510	544	504	1,536	507	688	634	1,209

1/ U.S. Farm Price; USDA. 2/ U.S. NO.1 Yellow Cash Central Illinois; Wall Street Journal.
3/ Rio Grande, Brazil FOB; Safras & Mercado or FOB Paranagua Reuters 4/ Argentina FOB
Up River; Reuters 5/ Rotterdam CIF; U.S.; Oil World. 6/ US Farm Price, Inshell, USDA.
7/ Rotterdam CIF; US Runners 40/50%, Shelled Basis, Oilworld. 8/ US Farm Price; USDA
9/ Rotterdam CIF; EC Lower Rhine; Oil World 10/Hamburg CIF; Europe "00"; Oil World.
11/ Phil/Indo CIF NW Europe; Oil World
* Preliminary

4/8/2011 7:33:59 AM

Table 30: Protein Meal Prices
U.S. Dollars per Metric Ton

Year Beg Oct 1	Soybean				Cottonseed	Sunseed		Fish	Rapeseed
	U.S. 1/	Brz 2/	Arg 3/	Hamb 4/	U.S. 5/	U.S. 6/	Rott 7/	Hamb 8/	Hamb 9/
Oct - Sep Average									
99/00-08/09	239	213	191	260	183	116	148	790	165
1999/00	185	182	159	180	141	83	102	407	124
2000/01	191	187	168	188	158	100	118	459	141
2001/02	180	174	157	174	146	95	110	592	129
2002/03	200	163	152	197	161	101	106	598	139
2003/04	282	211	188	273	202	122	149	649	178
2004/05	202	172	157	231	137	94	120	665	131
2005/06	192	176	158	215	159	85	122	1060	129
2006/07	226	199	181	276	166	116	178	1220	184
2007/08	370	337	299	469	280	191	298	1146	298
2008/09	365	333	290	401	281	168	178	1,103	195
2009/10									
Oct	359	354	320	430	276	167	201	1,427	188
Nov	362	354	320	425	287	209	207	1,526	197
Dec	368	350	312	425	313	218	214	1,651	217
Jan	346	334	304	407	316	200	216	1,681	240
Feb	326	309	277	393	280	183	243	1,627	231
Mar	306	268	239	389	235	152	241	1,672	200
Apr	321	295	294	376	193	146	230	1,874	203
May	317	300	300	353	189	133	227	1,821	228
Jun	337	308	306	342	194	121	211	1,747	196
Jul	359	336	333	361	203	132	228	1,715	227
Aug	366	358	356	389	218	156	NA	1,629	247
Sep	350	363	365	406	220	182	NA	1,645	277
Average	343	327	311	391	244	167	222	1,668	221
2010/11									
Oct	355	380	382	417	248	210	295	1,710	284
Nov	377	404	405	428	259	233	275	1,609	289
Dec	388	403	407	436	265	240	271	1,520	289
Jan	406	401	417	454	271	227	275	1,631	310
Feb	395	408	410	447	285	231	278	1,793	290
*Mar	381	384	384	423	283	231	270	1,796	266
Apr									
May									
Jun									
Jul									
Aug									
Sep									
Average	384	397	401	434	269	229	277	1,677	288

1/ Decatur, Average Wholesale 48% Protein; USDA. 2/ Rio Grande, Brazil FOB; Bulk Rate 45-46% Protein; Reuters. 3/ Argentina Pellets, FOB Up River; Reuters
4/ Hanburg FOB Ex-Mill; Oil World. 5/ Memphis FOB; 41% Protein Solvent Extraction; USDA
6/ Minneapolis FOB; 32% Protein; USDA. 7/ Rotterdam CIF; Argentina Pellet 37-38%; Oil World. 8/ Bremen (Hamburg prior to Mar 2006) 64-65% Protein; Oil World.
9/ Hamburg FOB; Ex-Mill 34% Protein; Oil World.

* Preliminary

4/8/2011 7:33:59 AM

Table 31: Vegetable Oil Prices
U.S. Dollars per Metric Ton

Year Begin Oct 1	Soybean				Cottonseed U.S. 5/	Sunseed		Peanut		Palm Malay 10/	Canola Rott 11/	Coconut Rott 12/	Corn U.S. 13/
	U.S. 1/	Brz 2/	Arg 3/	Rott 4/		U.S. 6/	Rott 7/	U.S. 8/	Rott 9/				
Oct - Sep Average													
99/00-08/09	573	560	557	631	723	895	734	1,178	1,101	493	700	640	648
1999/00	344	328	332	356	474	365	413	780	744	309	359	539	393
2000/01	311	295	295	336	352	350	428	768	685	235	372	323	299
2001/02	363	376	376	412	396	513	587	716	659	329	451	388	422
2002/03	486	489	491	534	832	731	592	1,034	1,139	421	588	449	621
2003/04	661	567	542	633	688	738	663	1,317	1,178	481	670	630	625
2004/05	507	466	471	545	609	962	703	1,171	1,102	392	660	636	614
2005/06	516	474	467	573	649	896	635	981	931	416	770	583	555
2006/07	684	673	667	771	787	1,279	846	1,253	1,219	655	852	812	701
2007/08	1,147	1,190	1,191	1,327	1,622	2,010	1,639	2,225	2,018	1,058	1,410	1,306	1,529
2008/09	709	740	741	826	820	1,108	837	1,539	1,339	633	868	735	722
2009/10													
Oct	731	802	825	897	836	1,151	846	1,129	1,148	663	896	706	829
Nov	807	853	831	931	897	1,168	921	1,146	1,116	703	928	729	840
Dec	812	857	816	935	913	1,146	986	1,151	1,192	766	944	768	882
Jan	769	845	852	923	860	1,146	969	1,301	1,316	774	916	784	889
Feb	765	840	790	914	863	1,146	948	1,312	1,380	778	893	798	828
Mar	802	820	793	915	879	1,130	949	1,295	1,380	809	897	921	846
Apr	818	817	809	903	854	1,138	924	1,402	1,360	811	909	940	849
May	781	820	790	865	824	1,157	910	1,491	1,353	798	864	932	849
Jun	760	808	773	859	882	1,229	889	1,494	1,342	787	880	993	858
Jul	773	856	827	907	936	1,182	937	1,495	1,300	801	946	1,031	866
Aug	828	915	899	1,002	963	1,185	1,074	1,508	1,334	915	1,013	1,170	914
Sep	864	940	941	1,042	948	1,190	1,114	1,517	1,270	906	1,037	1,275	945
Average	793	848	829	924	888	1,164	956	1,353	1,291	793	927	921	866
2010/11													
Oct	970	1,040	1,039	1,157	1,041	1,235	1,284	1,574	1,331	997	1,156	1,412	1,047
Nov	1,050	1,130	1,141	1,247	1,119	1,389	1,441	1,656	1,728	1,107	1,249	1,512	1,046
Dec	1,136	1,208	1,215	1,322	1,190	1,387	1,454	1,717	1,753	1,196	1,396	1,715	1,206
Jan	1,187	1,269	1,273	1,374	1,233	1,634	1,492	1,765	1,788	1,256	1,447	2,038	1,277
Feb	1,195	1,280	1,277	1,365	1,251	1,888	1,456	1,756	1,730	1,282	1,402	2,256	1,398
*Mar	1,192	1,232	1,218	1,307	1,224	2,133	1,389	1,709	1,650	1,196	1,414	1,925	1,493
Apr													
May													
Jun													
Jul													
Aug													
Sep													
Average	1122	1193	1194	1295	1176	1,611	1,419	1,696	1,663	1,172	1,344	1,810	1,245

1/ Decatur; Average Wholesale Tank Crude; USDA. 2/ Brazil FOB; Bulk Rate; Reuters. 3/ Argentina FOB;

Oilworld or Reuters 4/ Dutch FOB; Ex-Mill; Oil World. 5/ Valley Points FOB. Tank Cars Crude; USDA.

6/ Minneapolis FOB; USDA. 7/ EU FOB NW Euro; Oil World. 8/ South East Mills FOB; Tank Cars Crude; USDA.

9/ Rotterdam CIF; Any Origin; Oil World. 10/ Malaysia FOB; RBD; Oil World. 11/ Rotterdam, Dutch FOB

Ex-Mill; Oilworld. 12/ Rotterdam CIF; Phil/Indo; Oil World. 14/ Decatur; Crude; AMS

* Preliminary

4/8/2011 7:33:59 AM